



New Jersey Pinelands Commission

PRESS RELEASE

May 25, 2021

Contact: Paul Leakan, NJ Pinelands Commission

E-mail: info@pinelands.nj.gov

For Immediate Release:

New Jersey Pinelands Commission opens new round of funding to permanently preserve land in the Pinelands

Agency to focus on grassland habitats, mitigating climate change impacts

NEW LISBON, N.J. – The Pinelands Commission will focus on protecting grassland habitats and mitigating the impacts of climate change in its new round of funding for land acquisitions in the Pinelands Area.

The Commission has allocated \$1 million from its [Pinelands Conservation Fund](#) for the latest round of land acquisitions, and it is now accepting applications for funding.

“The Commission has provided \$9.4 million toward the permanent preservation of nearly 9,000 acres thus far, and we’re excited about the priorities for this next round of funding,” said Nancy Wittenberg, the Commission’s Executive Director. “Permanent land protection is among our most effective tools to preserve the Pinelands, and this new round of funding will address critical issues such as the protection of special habitats and the mitigation of climate change impacts.”

The Commission launched the new round of land acquisition funding after receiving a financial offset as part of an [amended agreement with the South Jersey Transportation Authority](#). The new round of funding is available to all counties, municipalities, and non-profit organizations working in the Pinelands Area, and **the deadline for application submissions is July 30, 2021.**

In the new round, the Commission will consider the following factors in evaluating applications for funding:

- Location, including a focus on properties that are near the Atlantic City International Airport in Egg Harbor Township, while also placing a priority on land in the Preservation Area District, Forest Area, Special Agricultural Production Area or Agricultural Production Area;
- The presence of habitat for threatened and endangered species, with a focus on

(MORE)

Pinelands Press Release

Page 2 ...

grassland birds. Greater priority is given to grassland habitat with known, recent sightings of grassland birds;

- Parcel size, with greater priority given for properties that are larger than 500 acres;
- Contiguity with preserved land, with greater priority given for land that is closer to other permanently preserved properties;
- Long-term maintenance capability, with priority given for entities with established monitoring and maintenance programs;
- Climate change impacts or mitigation, with greater priority given for carbon sequestration or storage and for large tracts of cedar swamp;
- Partner contribution level, with the funding recipient providing a minimum of 2/3rds of the acquisition costs, and the Pinelands Conservation Fund providing the remaining 1/3rd of the costs; and
- Purpose, with the highest priority given for properties with habitat for threatened or endangered species or properties associated with climate change factors of carbon sequestration, wildfire and floodplains, followed by open space and historic preservation.

Focus area maps are enclosed. The application form, supporting documentation and a description of the Pinelands Conservation Fund are available on the Commission's website under the Pinelands Conservation Fund page, which can be accessed at <https://www.nj.gov/pinelands/landuse/perm/pcf/index.shtml>.

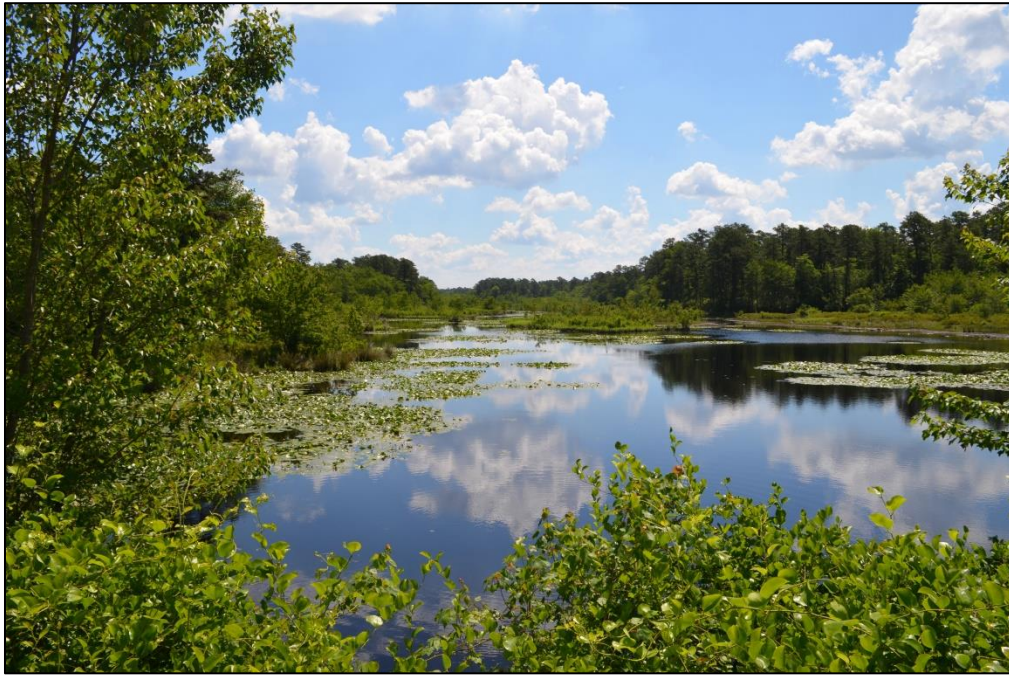
To request additional information regarding the PCF Land Acquisition Program's project criteria, scope and eligibility, please contact Gina Berg of the New Jersey Pinelands Commission at Gina.Berg@pinelands.nj.gov or (609) 894-7300.

***** ATTENTION REPORTERS/EDITORS:** High-resolution digital photos of land that has been permanently preserved through the Pinelands Conservation Fund can be obtained by contacting Paul Leakan at Info@pinelands.nj.gov. Examples are shown on the following page. **Please inquire about any photos that pertain to your coverage area.** Click [here](#) for a video that highlights the Pinelands Conservation Fund.

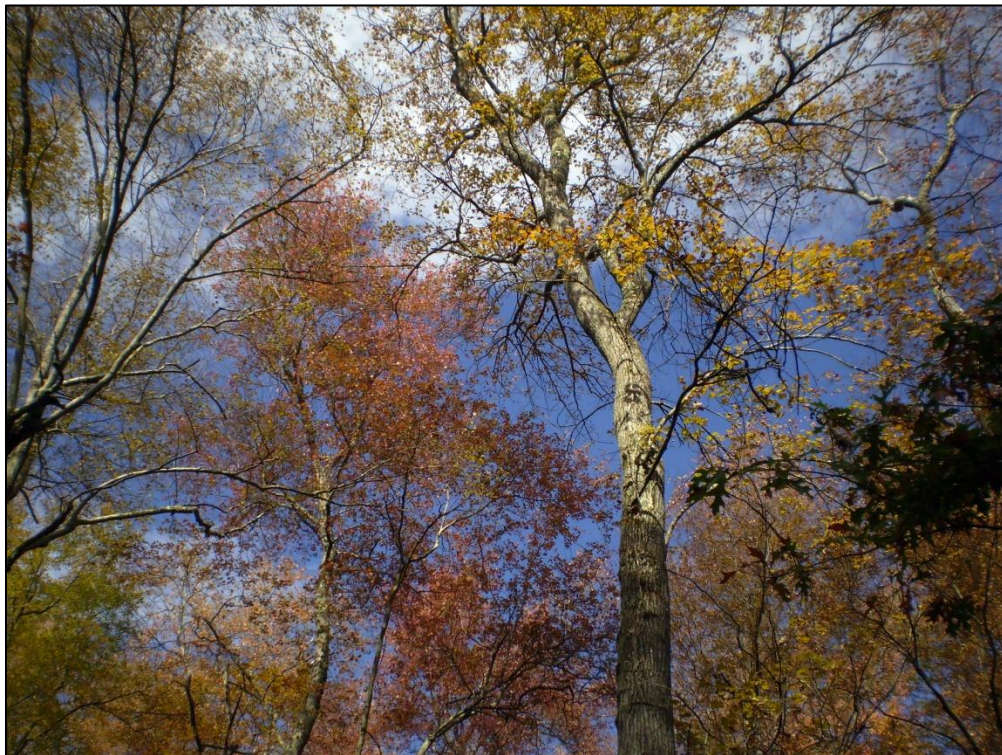
(MORE)

Pinelands Press Release

Page 3 ...



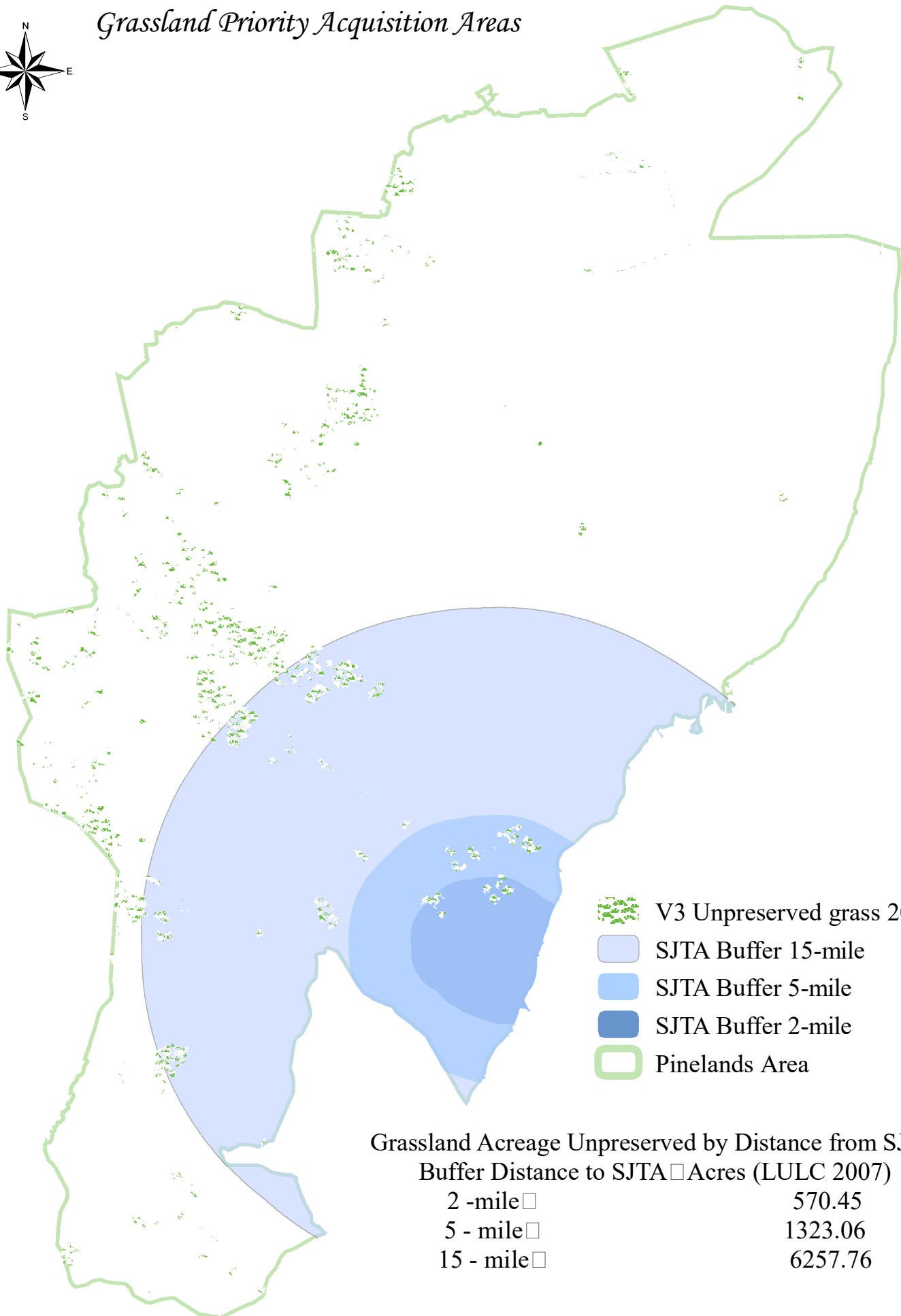
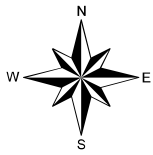
Above: This 457-acre property in Southampton and Woodland townships was permanently preserved through the Pinelands Commission's Pinelands Conservation Fund.



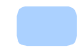




Above: This 414-acre property in Tabernacle and Southampton townships was permanently preserved through the Pinelands Commission's Pinelands Conservation Fund.

####

Grassland Priority Acquisition Areas



-  V3 Unpreserved grass 2020
-  SJTA Buffer 15-mile
-  SJTA Buffer 5-mile
-  SJTA Buffer 2-mile
-  Pinelands Area

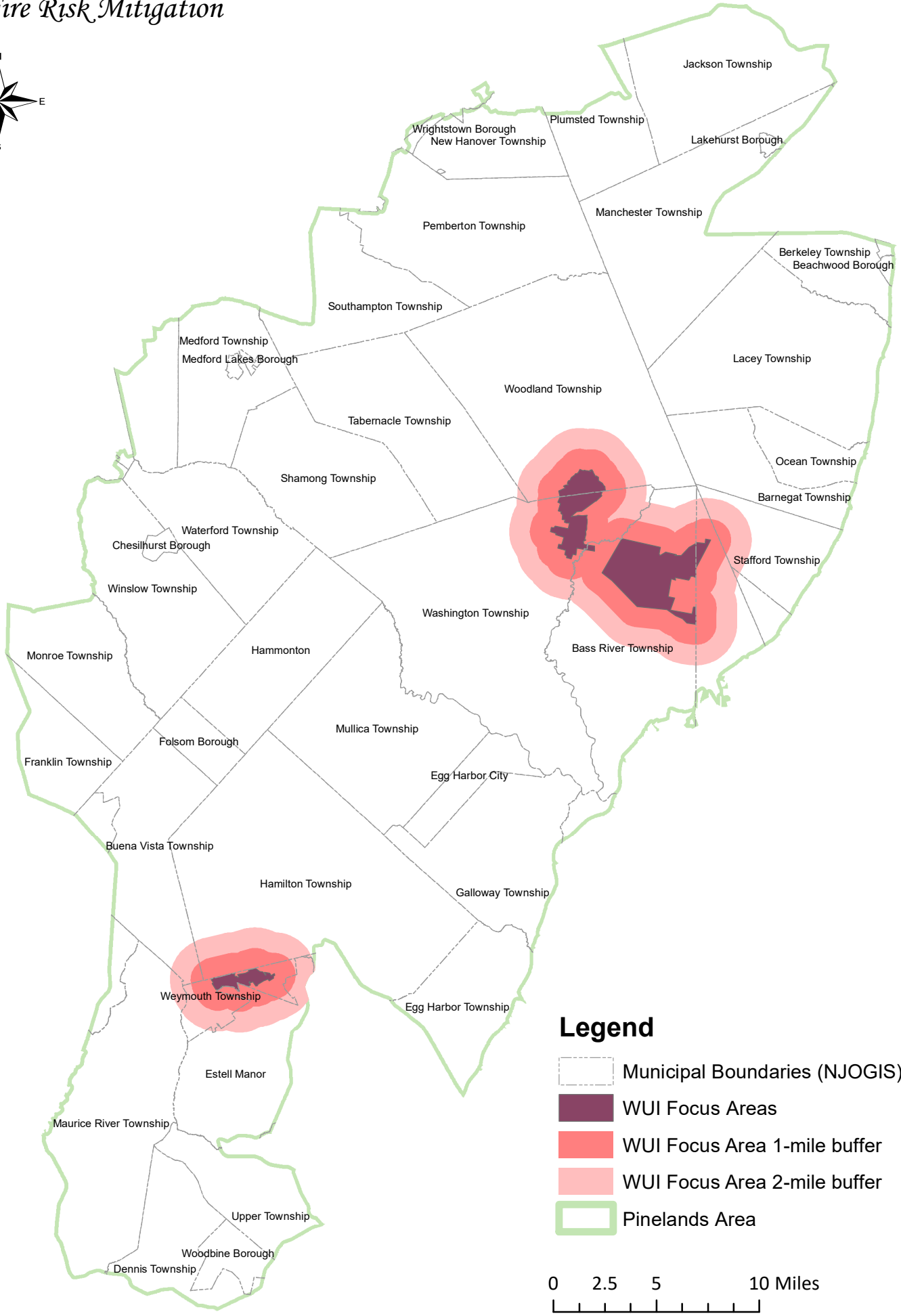
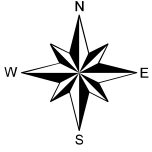
Grassland Acreage Unpreserved by Distance from SJTA

Buffer Distance to SJTA □ Acres (LULC 2007)

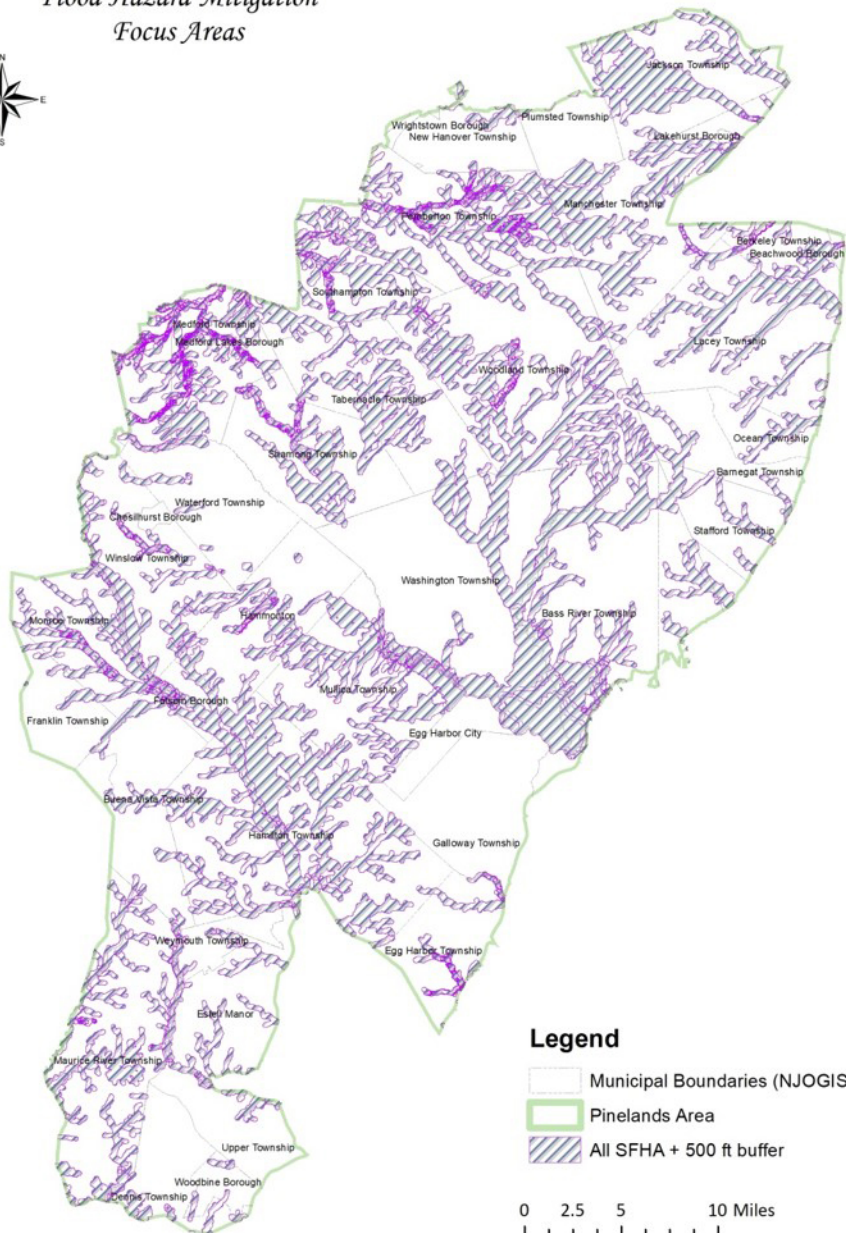
2 - mile □	570.45
5 - mile □	1323.06
15 - mile □	6257.76



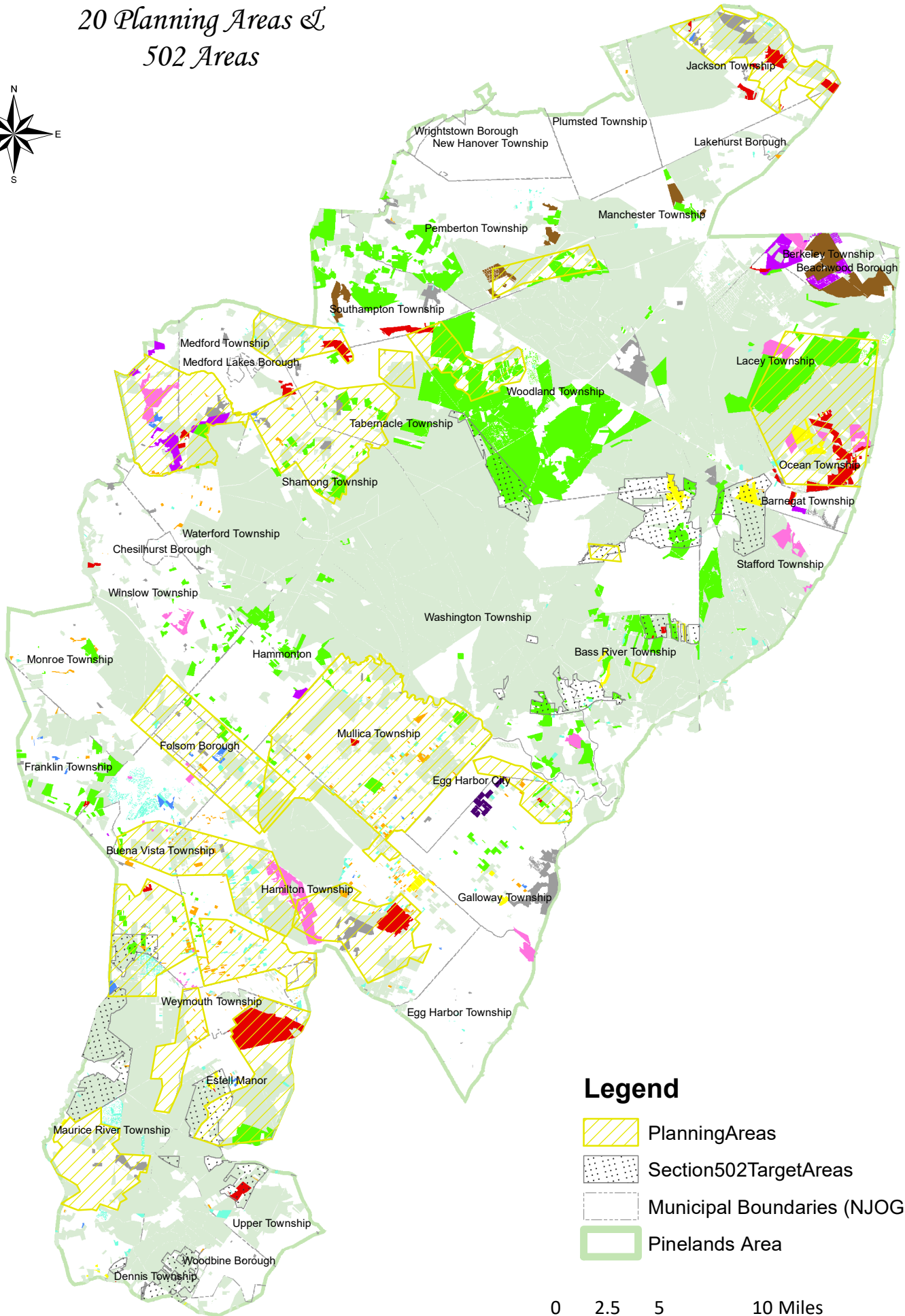
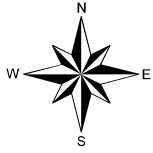
Fire Risk Mitigation




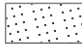

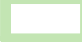
Flood Hazard Mitigation Focus Areas



20 Planning Areas & 502 Areas



Legend

-  Planning Areas
-  Section 502 Target Areas
-  Municipal Boundaries (NJOGIS)
-  Pinelands Area

