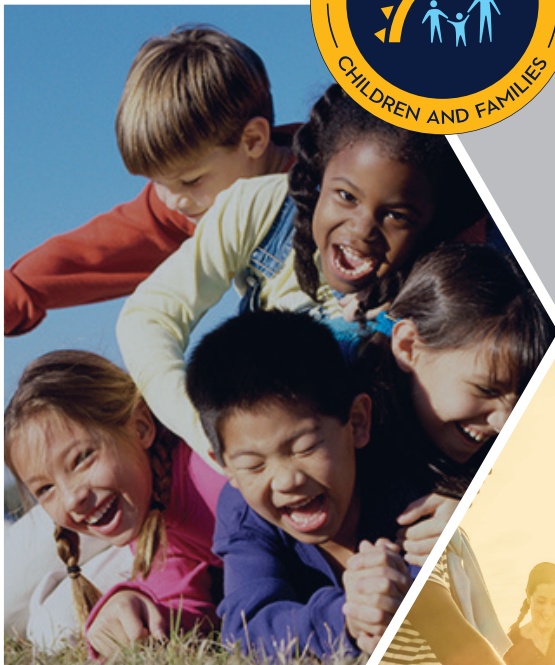




2022 DCF Statewide Profile

NEW JERSEY

Christine Norbut Beyer, MSW
DCF Commissioner



Phil Murphy
Governor
Sheila Oliver
Lt. Governor



ABOUT DCF

The New Jersey Department of Children and Families is the state's Cabinet-level agency devoted exclusively to serving and supporting children and families. DCF is comprised of approximately 6,600 staff who are focused on and committed to assisting and empowering residents to be **safe, healthy and connected**.

This is done with an array of evidence-based, family-centered programs and services that are provided through a robust network of community providers using work-practices that incorporate racial equity, are healing centered and utilize a protective factors framework.

Collectively, the DCF and its partners are working to: increase kinship placements and family connections; prevent maltreatment and promote strong families; advance race equity among staff and families served; integrate consumer voice in all programs and services; cultivate a culture of accountability; maximize federal revenue; provide an integrated and inclusive system of care to support youth mental health and children and youth with developmental disabilities; safeguard staff and promote professional satisfaction.

DCF is comprised of the following divisions and offices:

- CENTRAL OFFICE OF ADMINISTRATION**
- DIVISION OF CHILD PROTECTION AND PERMANENCY**
- DIVISION OF CHILDREN'S SYSTEM OF CARE**
- DIVISION OF FAMILY AND COMMUNITY PARTNERSHIPS**
- DIVISION ON WOMEN**
- OFFICE OF DIVERSITY, EQUITY AND BELONGING**
- OFFICE OF EDUCATION**
- OFFICE OF FAMILY VOICE**
- OFFICE OF HOUSING**
- OFFICE OF LICENSING**
- OFFICE OF MONITORING**
- OFFICE OF RESILIENCE**
- OFFICE OF STAFF HEALTH AND WELLNESS**
- OFFICE OF TRAINING AND PROFESSIONAL DEVELOPMENT**
- THE INSTITUTIONAL ABUSE INVESTIGATION UNIT**



Division of Family and Community Partnerships (FCP) and Division on Women (DOW)

Residents Served by DCF in New Jersey for Calendar Year 2022

Services focus on preventing violence and strengthening families across the lifespan by:

- Improving parenting knowledge and skills
- Building relationships and reducing social isolation
- Promoting children’s social and emotional development
- Increasing individual resilience
- Providing access to supports for every-day needs
- Creating a more equitable environment for women and men



37,227 families & individuals served

Early Childhood Services

These programs serve pregnant women and families with infants and young children, ages 0 to 8 years. They also provide training and services to parents, providers, and community members.



118,693 individuals served*

School-Based Youth Services

These programs serve school-aged youth and their families, operating in 90 NJ schools.



56,763 families served

Family Support Services

These programs provide services to parents, children, young adults, and seniors to strengthen families and enrich their communities.

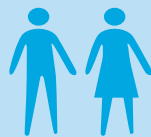
*Total number served is a duplicated number



6,767 individuals served

Sexual Violence Services

These services include programs for survivors of sexual violence and primary prevention programs. Services are open to all genders and ages, with special focus on young adults. The sexual violence hotline received 16,429 calls in CY 2022.



53,842 individuals served

Domestic Violence Services

These programs serve all individuals affected by domestic violence, including women, men, and children. Domestic violence hotlines received 76,171 calls in CY 2022.



8,474 individuals served

Employment and Training Services

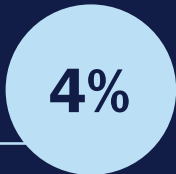
These programs assist NJ residents to achieve economic self-sufficiency through employment readiness, focusing on displaced individuals who have lost their primary source of income and Hispanic women by enhancing their workforce development and readiness skills.



Division of Children's System of Care (CSOC)

Residents Served by DCF in New Jersey for Calendar Year 2022

CSOC Youth In-Home and Out-of-Home*



- Youth Served In-Community
- Youth Served in Out-of-Home Treatment Settings

Mobile Response Stabilization**



- Successfully stabilized youth in home
- Unable to stabilize youth in home

*Quarterly Data - Point in Time from December 2022 - Youth Open (Less DD Eligible only youth)

**Data from Mobile Response Stabilization Services - Dispatch



66,640[†]

Youth and their families received help through CSOC.



146,251[†]

Calls CSOC received from families for support, assistance, and services.



33,349^{}**

Mobile Response Services dispatched to families with requests for urgent assistance with a youth's behavior.



27,613^{*}

Youth active with CSOC.



14,440[†]

Active CSOC youth eligible for supports and services for an identified developmental disability.

[†]Data from Perform Care population report

*Quarterly Data - Point in Time from December 2022 - Youth Open (Less DD Eligible only youth)

**Data from Mobile Response Stabilization Services - Dispatch



1,962^{††}

Active CSOC youth with an identified substance use issue.

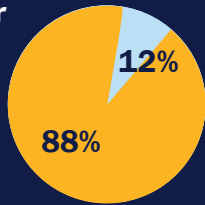
^{††}Substance Use Involvement - Point in Time from December 2022 CIACC Report



Division of Child Protection and Permanency (CP&P)

Residents Served by DCF in New Jersey for Calendar Year 2022

The State Central Registry (SCR) received **152,642** calls in 2022. Among those calls, there were **57,827** reports generated to investigate the need for child protection services (CPS) and **7,843** referrals for child welfare services (CWS).



■ CPS ■ CWS



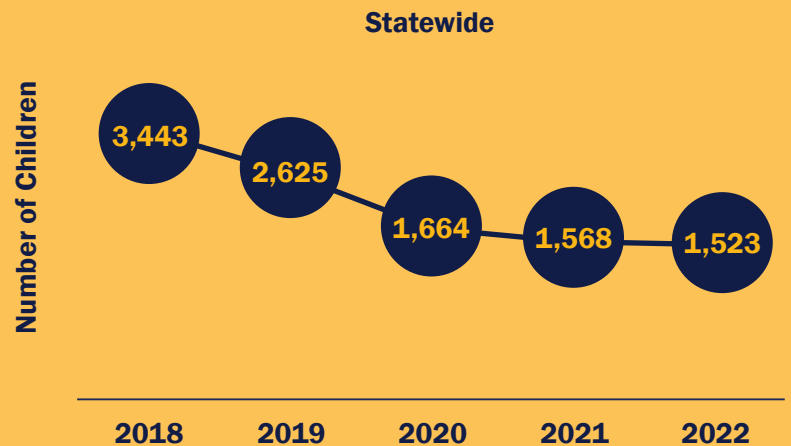
135,668 children received investigation, case management, prevention services, or adoption support by CP&P in 2022.

Most children are served safely in their own homes.



■ In Home ■ Foster Care

The number of children entering foster care decreased by **52%** in the last five years (2018 - 2022).



752 children were reunified with their biological parents in 2022.



On December 31, 2022, there were **2,946** children in out of home placement, **45%** of which lived with Kin.

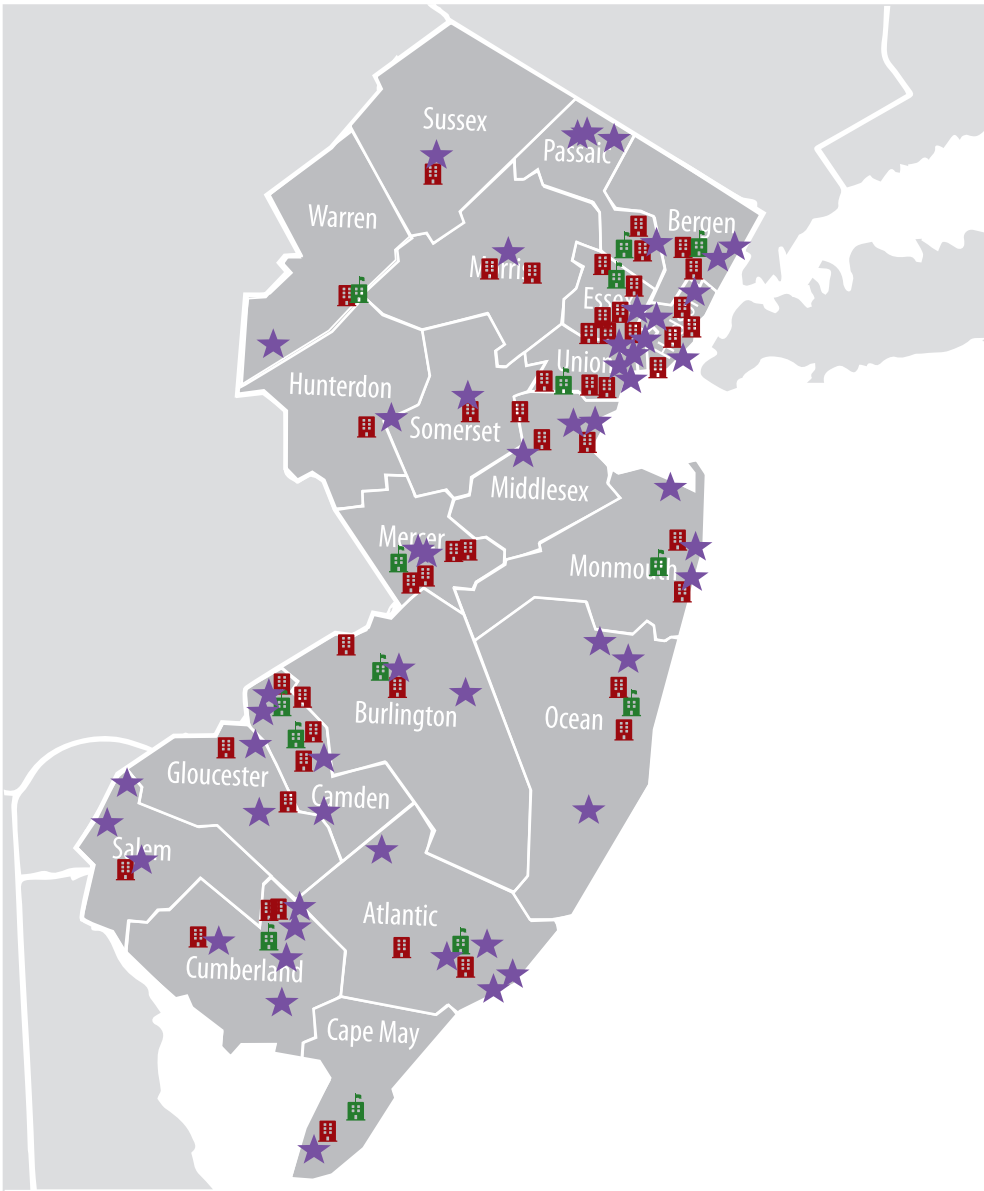


13,594 children currently receive adoption or kinship legal guardianship subsidies as of December 31, 2022.



DCF Footprint in New Jersey

Residents Served by DCF in New Jersey for Calendar Year 2022



DCF Offices



There are **60** DCF offices serving children and families in New Jersey.

- 46 Local Offices
- 9 Area Offices
- 5 IAIU Offices

DCF Regional Schools



There are **14** DCF regional schools serving children in New Jersey

Family Success Centers (FSC)



There are **57** Family Success Centers serving families in New Jersey

DCF Staff



There are **6,285** DCF employees currently working in New Jersey.

Resource Homes



2,644 Licensed resource homes serving children.

Childcare Centers



4,057 Licensed childcare centers serving children.

Keeping Families Together



646 Families receiving supportive housing thru DCF.