

**New Jersey Department of Health and Senior Services**  
**Communicable Disease Service**  
**Influenza Activity Summary**  
**Week Ending December 23, 2006 (MMWR Week 51)**

**Influenza activity level:**    **SPORADIC**

No Activity- At least 2 of 3 parameters at or below state baseline **AND** no lab confirmed cases

Sporadic – At least 2 of 3 parameters above state baseline **AND** confirmed laboratory cases anywhere in the state  
**OR** at least one laboratory confirmed outbreak in an institution anywhere in the state

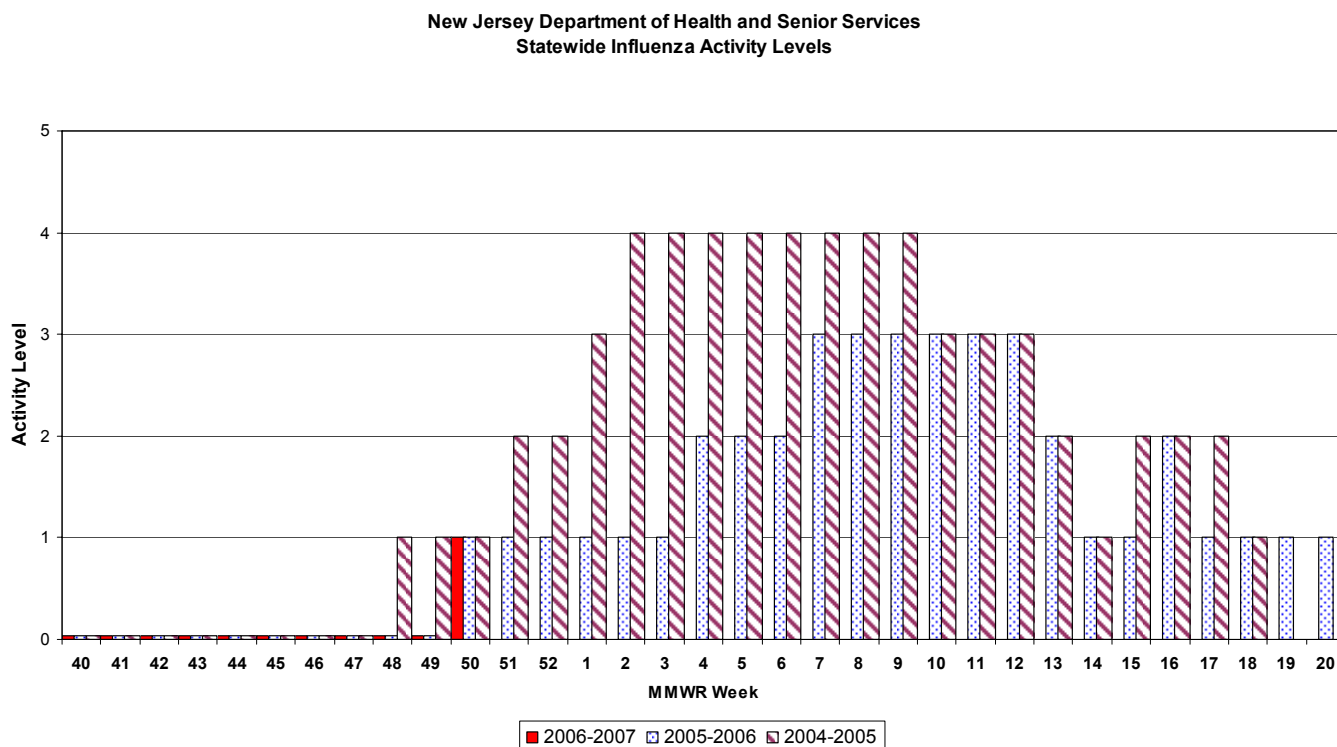
Local – At least 2 of 3 parameters above state baseline in a single county **AND** confirmed laboratory cases from that same county within the previous 3 weeks (other counties may be above baseline without lab confirmed cases) **OR** confirmed outbreaks in 2 or more institutions in a single county

Regional – At least 2 of 3 parameters above state baseline in  $\geq 2$  but  $\leq 10$  counties **AND** laboratory confirmed cases from these same counties in past 3 weeks **OR** confirmed outbreaks institutions in  $\geq 2$  but  $\leq 10$  counties

Widespread – At least 2 of 3 parameters above state baseline in  $> 10$  counties **OR** institutional outbreaks in  $> 10$  counties **AND** lab confirmed influenza cases in previous 3 weeks.

Parameter = School, emergency department, or long term care weekly surveillance data

Baseline is calculated by taking the average of statewide percentages of ILI for a 3 year (2004, 2005, 2006) period during months when influenza is less likely to be circulating (May-August). Weeks in which less than 4 counties reported were not included in the calculation.



## **Regional Data    NO ACTIVITY IN ANY PUBLIC HEALTH REGION**

**NOTE:** One specimen from the NE public health region tested positive for influenza A by viral isolation. However, only one of the three parameters for that region was above the state baseline. Therefore, this region is still listed as no activity.

### Public Health Regions

NW Region (Morris, Passaic, Sussex, Warren)

NE Region (Bergen, Essex, Hudson)

CW Region (Hunterdon, Mercer, Somerset)

CE Region (Middlesex, Monmouth, Ocean, Union)

South Region (Atlantic, Burlington, Camden, Cape May, Cumberland, Gloucester, Salem)

No Activity - At least 2 of 3 parameters at or below state baseline **AND** no lab confirmed cases in the public health region

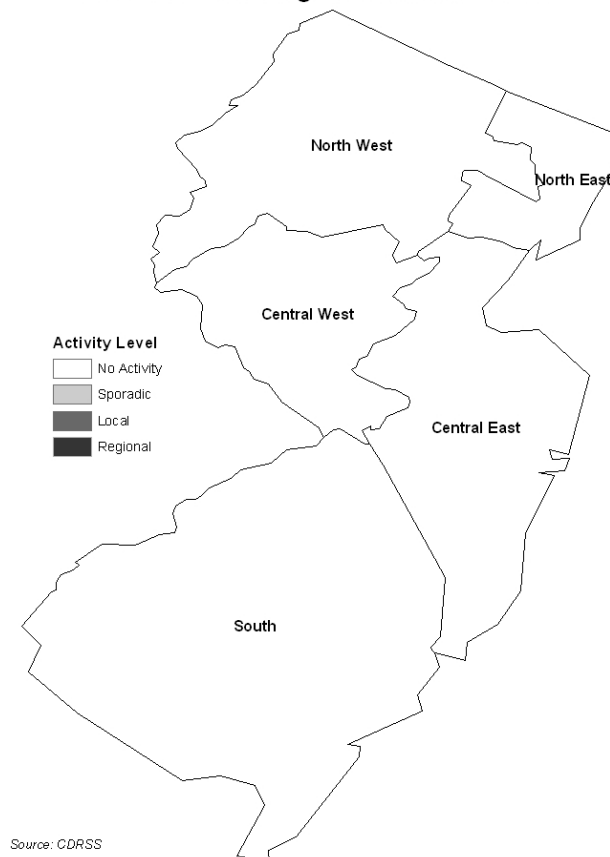
Sporadic - At least 2 of 3 parameters above state baseline **AND** confirmed laboratory cases anywhere in the public health region **OR** at least one laboratory confirmed outbreak in an institution anywhere in the public health region

Local - At least 2 of 3 parameters above state baseline in a single county of a public health region **AND** confirmed laboratory cases from that same county within the previous 3 weeks (other counties may be above baseline without lab confirmed cases) **OR** confirmed outbreaks in 2 or more institutions in a single county of a public health region

Regional - At least 2 of 3 parameters above state baseline in at least half of counties of public health region **AND** laboratory confirmed cases from these same counties in past 3 weeks **OR** confirmed outbreaks institutions in at least half of counties of public health region counties

Widespread - Not used for public health region data

### **Public Health Region Influenza Data**



## **Laboratory Surveillance**

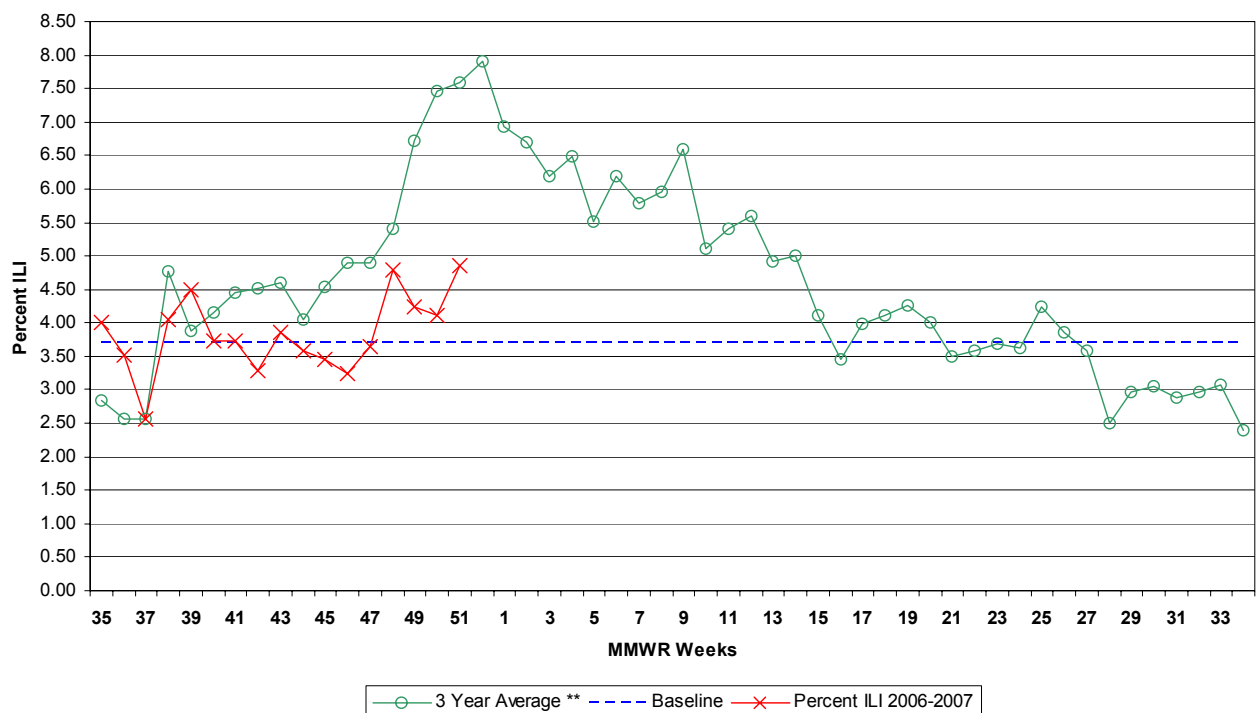
As of week 51, Hackensack University Medical Center and NJDHSS PHEL have tested 279 samples for influenza. One sample was positive for influenza A by viral isolation.

## **Influenza-like Illness (ILI) Surveillance\***

### **Emergency Departments**

During week 51, 4.85% ILI was reported statewide from emergency departments. This is an increase over the previous week (4.12%). The percent ILI for each county ranged from 1.33% to 19.41%. The percent ILI for this same week last year was 4.08% in emergency departments. The percent ILI for the northeast (5.50%), central west (8.98%) and the central east (6.29%) public health regions were above state baseline (3.71%).

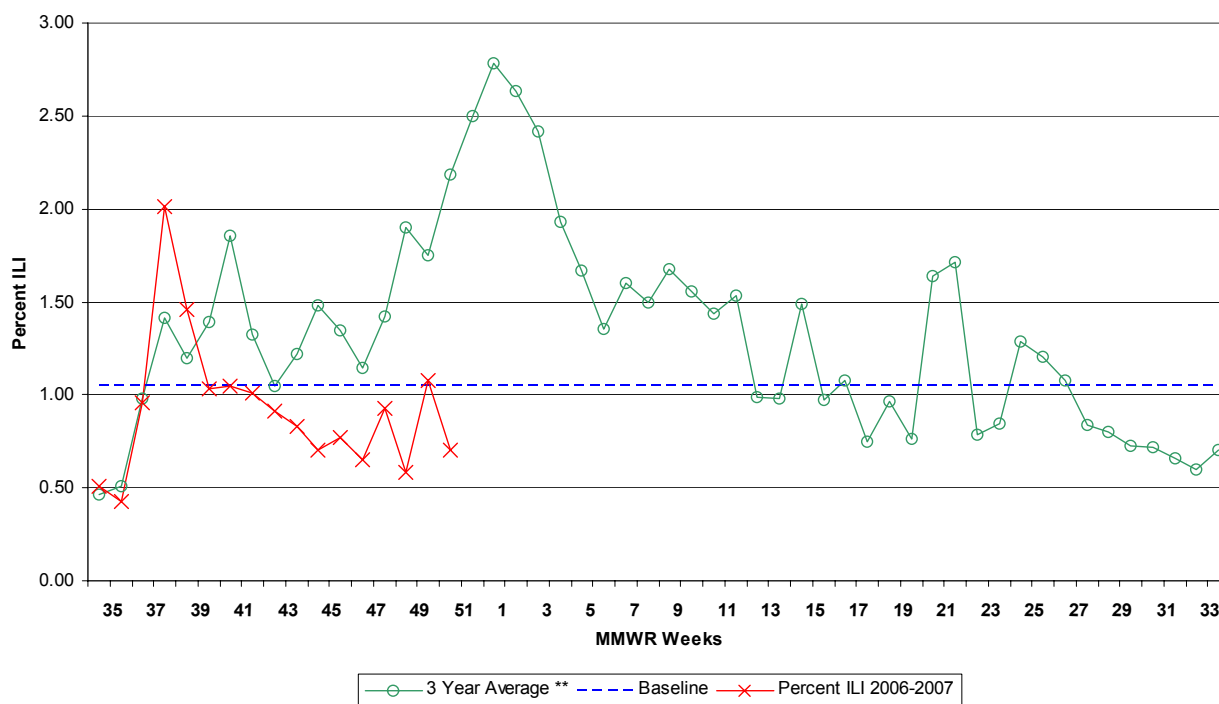
**New Jersey Department of Health and Senior Services  
Influenza-like Activity - Emergency Departments**



## Long-term Care Facilities

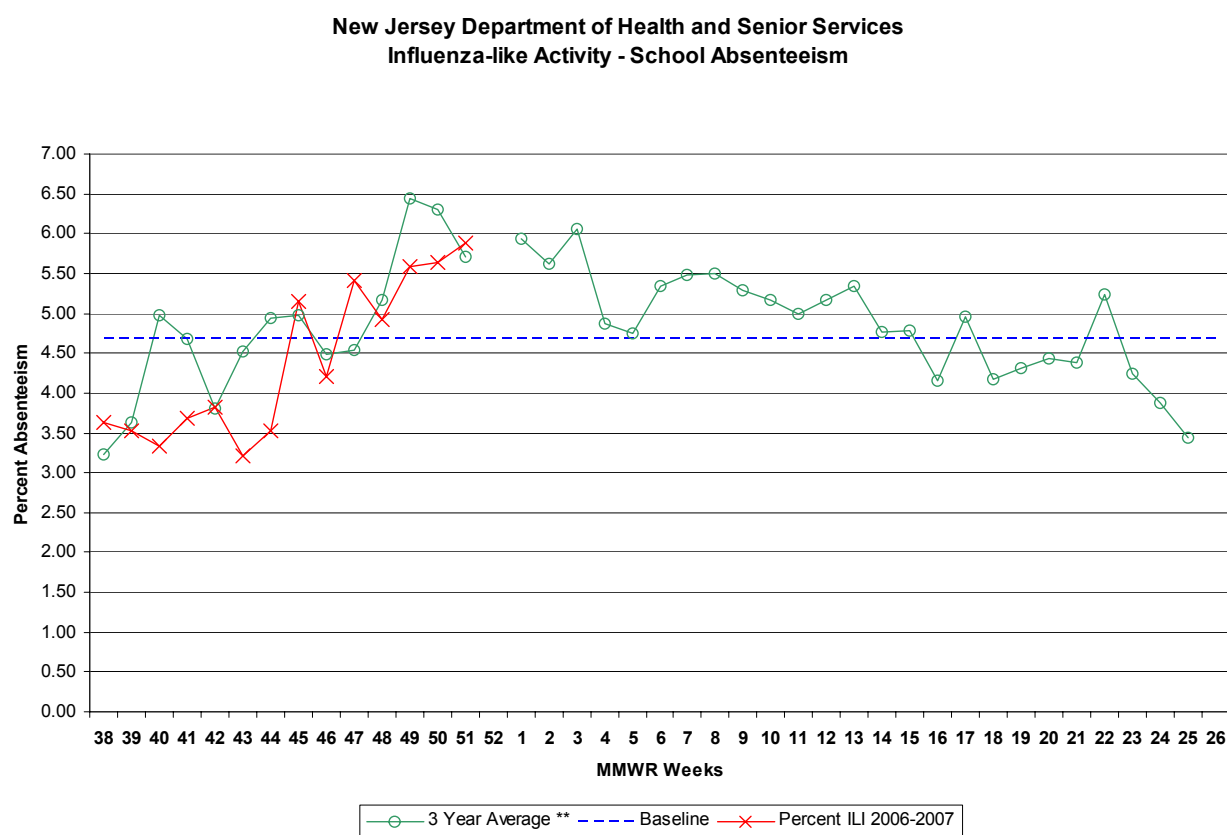
During week 51, 0.70% ILI was reported statewide from long term care facilities. This is a decrease over the previous week (1.08%). The percent ILI for each county ranged from 0.00% to 4.17%. No reports regarding ILI/respiratory outbreaks in communal living facilities were received. The percent ILI for this same week last year was 1.47% in long-term care facilities. No public health regions public health regions were above state baseline (1.05%).

### New Jersey Department of Health and Senior Services Influenza-like Activity - Long Term Care Facilities



## School Absenteeism

During week 51, schools reported 5.89% absenteeism. This is an increase over the previous week (5.64%). The percent ILI for each county ranged from 2.90% to 9.09%. The percent absent for this same week last year was 5.40%. The percent ILI for the northwest (7.23%), the central east (6.18%) and the south (5.69%) public health regions were above state baseline (4.68%).



## **Sentinel Provider Surveillance**

During week 51, 5.04% of sentinel provider patient visits were due to ILI. These data reflect reports from twelve (29%) of the enrolled sentinel providers.

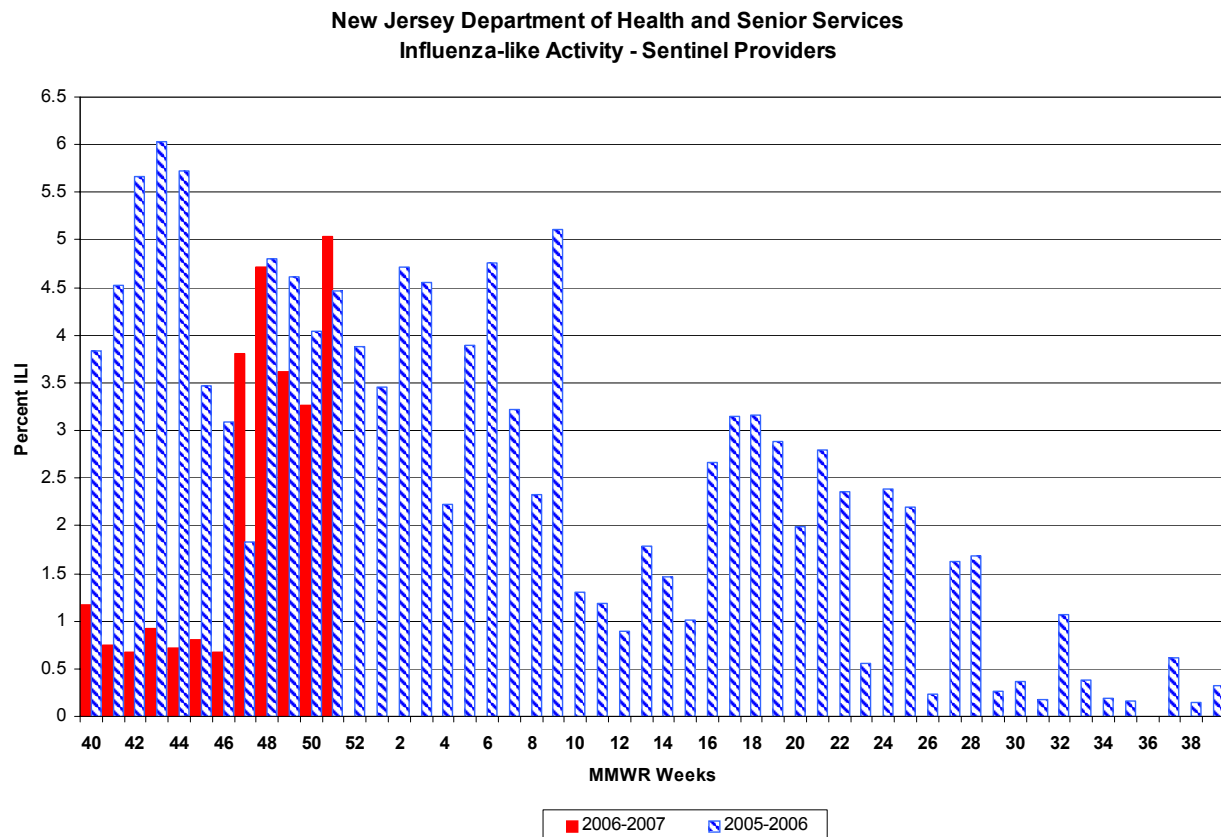
### **UPDATE**

During week 50, 3.26% of sentinel provider patient visits were due to ILI. These data reflect reports from thirteen (17%) of the enrolled sentinel providers.

During week 49, 3.61% of sentinel provider patient visits were due to ILI. These data reflect reports from fifteen (24%) of the enrolled sentinel providers.

During week 48, 4.71% of sentinel provider patient visits were due to ILI. These data reflect reports from eighteen (36%) of the enrolled sentinel providers.

During week 47, 3.81% of sentinel provider patient visits were due to ILI. These data reflect reports from nineteen (40%) of the enrolled sentinel providers.



## **Pediatric Influenza Surveillance**

To date, NJDHSS has received 17 reports of pediatric illness. No reports of pediatric illness or death associated with influenza have met the case definition.

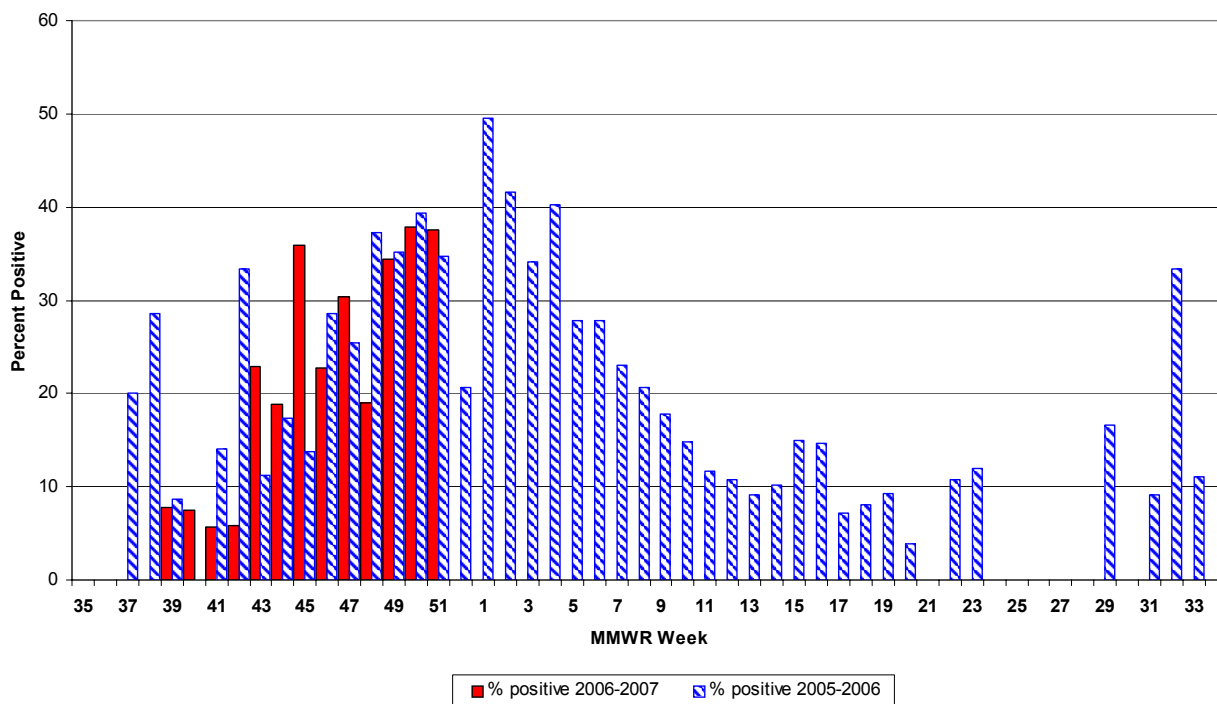
## **122 City Mortality Report**

During week 51, 3.37% of all deaths reported by the vital statistics offices in 6 New Jersey cities (i.e., Camden, Elizabeth, Jersey City, Newark, Paterson, Trenton) were due to pneumonia or influenza. This was a decrease over the previous week (3.57%). The percentage of death due to pneumonia or influenza for this same week last year was 6.99%.

## **RSV Reports**

During week 51, 37.58% of all RSV samples tested were positive. This was an increase over the previous week 37.89%. The percent of samples positive RSV for this same week last year was 34.68%.

**New Jersey Department of Health and Senior Services  
Respiratory Syncytial Virus (RSV) Surveillance by Week**



## **Additional Information**

For additional information regarding influenza surveillance please visit the following websites.

<http://nj.gov/health/flu/surveillance.shtml>

<http://www.cdc.gov/flu/>

\* Baseline is calculated by taking the average of statewide percentages of ILI for a 3 year (2004, 2005, 2006) period during months when influenza is less likely to be circulating (May-August). Weeks in which less than 4 counties reported were not included in the calculation.

\*\*Three year average is an average of the 2003-2004, 2004-2005, and 2005-2006 influenza seasons.



	Long Term Care			Schools			Hospital Emergency Department			RSV Tests	
County	# Enrolled	# Reports Rec'd	% ILI	# Enrolled	# Reports Rec'd	% Absent	# Enrolled	# Reports Rec'd	% ILI	# Positive	Total Tests Performed
ATLANTIC	5	2	0.54	16	15	7.21	4	4	1.33	15	28
BERGEN	3	0	0.00	11	0	0.00	6	0	0.00	0	0
BURLINGTON	6	6	0.00	99	66	5.81	3	2	0.83	12	34
CAMDEN	7	5	0.87	17	6	3.20	7	6	3.32	0	0
CAPE MAY	4	3	2.64	11	8	5.55	1	1	10.99	2	10
CUMBERLAND	4	2	0.71	17	9	8.39	3	3	4.56	9	20
ESSEX	14	5	0.86	31	8	3.40	11	9	4.89	51	146
GLOUCESTER	2	1	0.00	4	4	4.98	2	2	0.93	5	5
HUDSON	10	3	1.29	75	1	4.15	7	2	8.99	6	27
HUNTERDON	4	4	0.00	8	8	4.38	1	1	1.43	3	5
MERCER	10	3	1.61	12	10	4.00	5	3	3.05	14	45
MIDDLESEX	2	1	4.17	3	1	2.90	5	1	12.43	31	78
MONMOUTH	5	3	0.97	24	15	8.86	5	5	2.13	6	15
MORRIS	11	5	0.00	14	14	3.86	4	4	1.76	11	22
OCEAN	8	0	0.00	12	12	6.72	4	3	10.75	0	0
PASSAIC	8	3	0.66	22	6	4.89	6	2	3.60	0	0
SALEM	4	3	0.70	5	0	0.00	1	1	0.00	0	0
SOMERSET	5	4	0.67	52	23	4.59	2	2	19.41	0	0
SUSSEX	5	5	0.36	18	18	8.68	2	2	4.39	6	14
UNION	4	1	0.30	78	34	5.01	5	2	3.88	5	13
UNKNOWN	0	0	0.00	2	0	0.00	0	0	0.00	0	0
WARREN	7	7	1.57	21	18	9.09	2	2	10.85	1	9
<b>NW Region</b>	31	20	0.55	75	56	7.23	14	10	3.70	18	45
<b>NE Region</b>	27	8	1.03	117	9	3.50	24	11	5.50	57	173
<b>CW Region</b>	19	11	0.66	72	41	4.40	8	6	8.98	17	50
<b>CE Region</b>	19	5	0.88	117	62	6.18	19	11	6.29	42	106
<b>South Region</b>	32	22	0.66	169	108	5.96	21	19	2.59	43	97
<b>State Total</b>	<b>128</b>	<b>66</b>	<b>0.70</b>	<b>550</b>	<b>276</b>	<b>5.89</b>	<b>86</b>	<b>57</b>	<b>4.85</b>	<b>177</b>	<b>471</b>