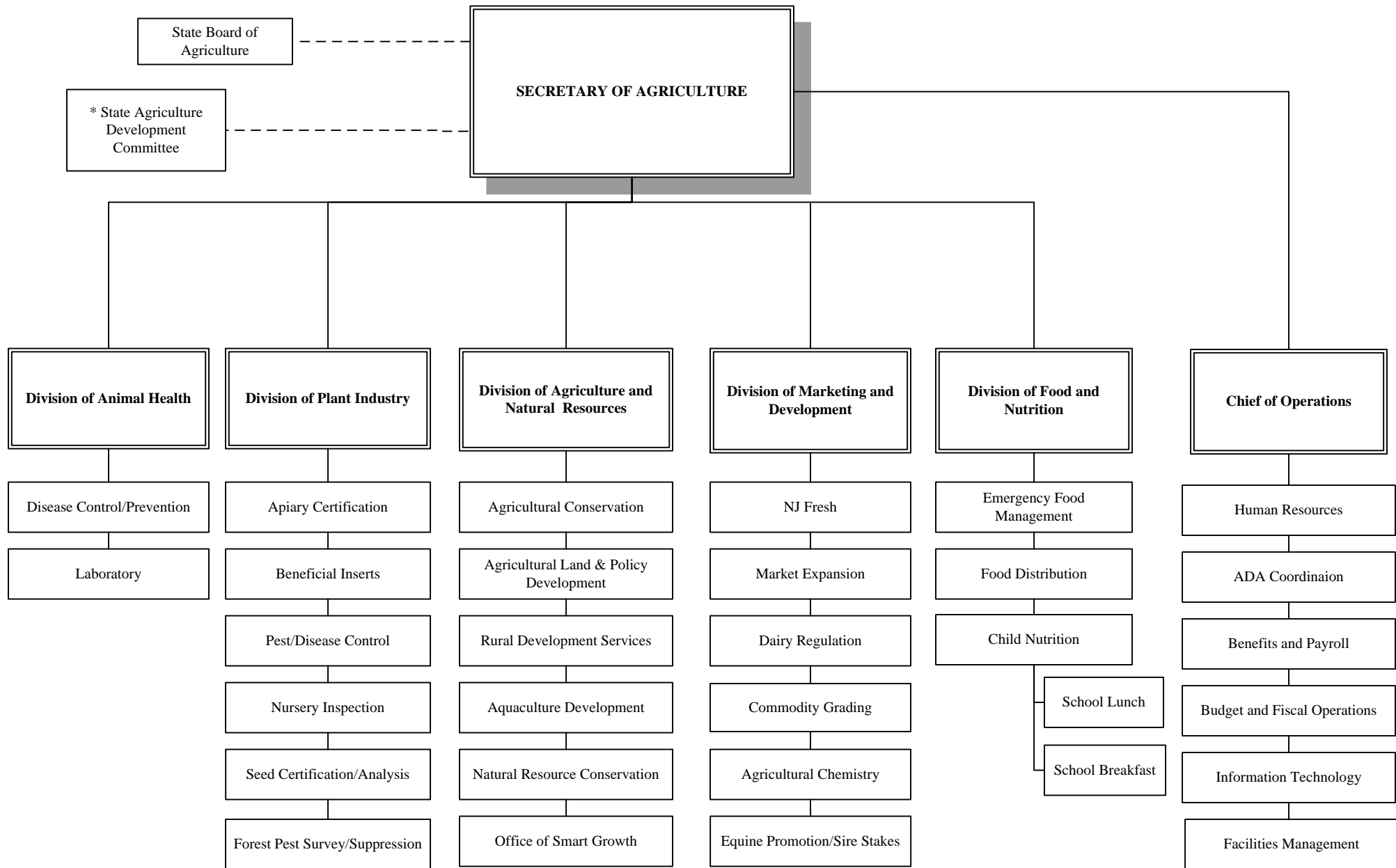


AGRICULTURE**



* In but not of the Department of Agriculture

** In fiscal 09, the functions of the Department of Agriculture are recommended for consolidation into other existing State agencies.

DEPARTMENT OF AGRICULTURE OVERVIEW

Mission and Goals

The mission of the Department of Agriculture is to promote and provide high-quality, nutritious, abundant, safe, and affordable food and other agricultural products; improve the economic viability of the agricultural industry; foster opportunities for farm profitability; preserve and protect agricultural and natural resources; and provide leadership and excellence in services to New Jersey agriculture and to the general public.

The Department's goals are to preserve farms; protect producers and consumers by ensuring safe, high-quality agricultural products and services; support and expand profitable, innovative agricultural and food industry development; protect and conserve natural and agricultural resources; provide access to fresh and nutritious foods for children, the needy, and other New Jersey citizens; promote agricultural education awareness and involvement; and guarantee the delivery of quality services. Additionally, the State Agriculture Development Committee (SADC), which is organizationally situated in but not of the Department, administers farmland preservation programs.

FY 2009 Budget Highlights

The Fiscal 2009 Budget for the Department of Agriculture totals \$22.9 million, a decrease of \$3.8 million or 14.2% under the fiscal 2008 adjusted appropriation of \$26.7 million. Direct state services decrease by \$1.8 million, composed of \$.5 million from the consolidation of the Department, \$.5 million from reducing funded vacancies, \$.4 million from halving the recommended appropriation for the Jersey Fresh program, \$.2 million from the elimination of the Asian Longhorned Beetle Monitoring program, and the remaining \$.2 million from several smaller reductions. Grants in aid decrease \$.9 million, composed of \$.6 million from the elimination of the Conservation Assistance Program and \$.3 million from eliminating the Soil and Water Conservation Grant program. State aid decreases by \$.9 million, composed solely of a reduction in the recommended appropriation for the school breakfast program that corrects historic overfunding.

Department Accomplishments

The Farmland Preservation program, administered by SADC, reported a total of 164 farms covering 10,209 acres newly preserved in 2007 as of November 30, including 37 farms covering 2,133 acres in the Highlands and 2 farms covering 626 acres in the Pinelands. By November 30, a grand total of 1,635 farms covering 161,877 acres had been preserved statewide since the inception of the program, including 316 farms covering 27,599 acres in the Highlands and 59 farms covering 8,833 acres in the Pinelands. In fiscal 2009, the State's farmland preservation efforts will continue with funding from a \$200 million bond issue approved by voters in November 2007.

The Division of Food and Nutrition increased the amount of food delivered to the state's more than 600 community feeding operations in fiscal 2007. An additional \$3 million was appropriated for food

purchases through the Governor's Fighting Hunger Initiative in fiscal 2007, which was further increased an additional \$1 million to \$4 million in fiscal 2008. The additional funds were targeted toward a local-first, regional-second, national-third purchasing hierarchy that sought to increase the amount of locally produced, nutrient-dense foods used in community feeding programs. In fiscal 2007, each dollar spent returned 1.25 lbs of food distributed for a total of 3.9 million pounds. Nearly 47% of this amount was provided as fruits and vegetables. For fiscal 2008, a pilot project increased availability of fresh, locally grown fruits and vegetables. This purchasing approach helped to ensure that the money was spent to supply feeding operations benefiting New Jersey's agricultural and food-processing businesses first. The Department is now making \$100,000 from the program available to gleaning operations in the state to cover a variety of costs. These operations work with farmers to donate surplus produce to feeding operations. In addition, the Governor's Fighting Hunger Initiative included a one-time appropriation of \$1 million in fiscal 2007 to help community feeding operators upgrade their facilities. This has helped to enhance food storage and preparation capabilities.

In 2007, all New Jersey public schools successfully implemented the Department's Model School Nutrition Policy. The policy replaces unhealthy foods with more nutritious options in an effort to promote healthier eating habits and combat obesity and childhood diseases. The new nutritional standards, which cover a la carte lines, vending machines, school stores, and fundraisers held during school hours on school grounds, were made law in February of 2007.

The Department pursued, through a Produce Safety Task Force formed in December of 2006, the training of more than 700 farmers in food safety basics and preparing for third-party audits of their farms. The Department advocated for national standards for produce safety and continued to examine the best ways to ensure that New Jersey producers meet new, higher food-safety standards that might come from government action or from within the produce industry.

New Jersey became the 17th state in the nation to gain accreditation by the United States Department of Agriculture to offer in-state certification services to farmers and processors who want to enter the organic market in the Garden State. The Department's certification program allows the state to assist organic growers with marketing Jersey Organic products, similar to the Jersey Fresh brand for general produce. The Department was directed to establish an organic certification program through legislation signed into law in September of 2003. The law required the establishment of certification procedures for "certified organic" and "transitional sustainable" and the designing of a label to be affixed to agricultural products that receive certification. The Department had to endure a rigorous process to receive its accreditation, which allows the Department to certify crops, wild crops, livestock and handling operations to the National Organic Standards.

DEPARTMENT OF AGRICULTURE
SUMMARY OF APPROPRIATIONS BY FUND
(thousands of dollars)

Year Ending June 30, 2007					Year Ending June 30, 2009			
Orig. & (S)Supple- mental	Reapp. & (R)Recpts.	Transfers & (E)Emer- gencies	Total Available	Expended	2008 Adjusted Approp.	Requested	Recom- mended	
					GENERAL FUND			
8,994	3,244	302	12,540	11,376	Direct State Services	9,721	7,930	7,930
5,025	412	730	6,167	5,751	Grants-In-Aid	4,975	4,075	4,075
11,727	2,593	-7	14,313	11,150	State Aid	11,727	10,873	10,873
---	1,799	---	1,799	---	Capital Construction	250	---	---
25,746	8,048	1,025	34,819	28,277	Total General Fund	26,673	22,878	22,878
25,746	8,048	1,025	34,819	28,277	Total Appropriation, Department of Agriculture	26,673	22,878	22,878

SUMMARY OF APPROPRIATIONS BY PROGRAM
(thousands of dollars)

Year Ending June 30, 2007					Year Ending June 30, 2009			
Orig. & (S)Supple- mental	Reapp. & (R)Recpts.	Transfers & (E)Emer- gencies	Total Available	Expended	2008 Adjusted Approp.	Requested	Recom- mended	
					DIRECT STATE SERVICES - GENERAL FUND			
					Agricultural Resources, Planning, and Regulation			
1,315	397	-15	1,697	1,349	Animal Disease Control	1,355	1,255	1,255
2,090	857	-208	2,739	2,499	Plant Pest and Disease Control	2,139	1,864	1,864
792	276	85	1,153	787	Agriculture and Natural Resources	1,176	1,101	1,101
338	---	---	338	338	Food and Nutrition Services	343	343	343
2,261	1,001	-207	3,055	2,862	Marketing and Development Services	2,274	1,624	1,624
1,740	670	---	2,410	2,410	Farmland Preservation	1,771	1,771	1,771
458	43	647	1,148	1,131	Administration and Support Services	663	497	497
8,994	3,244	302	12,540	11,376	Subtotal	9,721	8,455	8,455
---	---	---	---	---	Less: Department Consolidation Savings	---	(525)	(525)
8,994	3,244	302	12,540	11,376	Total Direct State Services - General Fund	9,721	7,930	7,930
8,994	3,244	302	12,540	11,376	TOTAL DIRECT STATE SERVICES	9,721	7,930	7,930
					GRANTS-IN-AID - GENERAL FUND			
					Agricultural Resources, Planning, and Regulation			
950	412	640	2,002	1,586	Agriculture and Natural Resources	600	---	---
4,000	---	---	4,000	4,000	Food and Nutrition Services	4,000	4,000	4,000
75	---	90	165	165	Marketing and Development Services	75	75	75
---	---	---	---	---	Farmland Preservation	300	---	---
5,025	412	730	6,167	5,751	Subtotal	4,975	4,075	4,075
5,025	412	730	6,167	5,751	Total Grants-In-Aid - General Fund	4,975	4,075	4,075
5,025	412	730	6,167	5,751	TOTAL GRANTS-IN-AID	4,975	4,075	4,075

carefully regulated chemical and/or biological control programs. Where beneficial insects or other parasites are known, the Department, through its beneficial insect rearing laboratory, mass produces and releases them into the agricultural or forest environment for pest control.

In cooperation with the USDA, the Department controls the movement of plant materials. All nurseries producing plant materials are inspected for pests and disease and must be free of both to qualify for certification.

Samples of agricultural and garden seed are randomly selected and tested for variety content, germination, and other labeled guarantees. Products which do not conform to label claims are removed from sale and violators are subject to penalty action and prosecution.

03. **Agriculture and Natural Resources.** This program is designed to maintain, conserve, and enhance New Jersey's rural and agricultural resources and to control erosion, sedimentation, and nonpoint sources of water pollution and storm water damage. The primary objective of this program is to improve agricultural productivity and New Jersey's agricultural business climate while maintaining environmental quality.

Soil and water resource management standards and regulations are promulgated and plans for soil erosion and sediment control are certified for land disturbance activities. Technical assistance is provided to landowners and public agencies through the State Soil Conservation Committee and local soil conservation districts. Cost sharing is provided to eligible farmland owners who install conservation systems.

The Division coordinates the implementation of the State's Aquaculture Development Act and coordinates the agricultural education and Future Farmers of America youth programs.

05. **Food and Nutrition Services.** This division, which consolidated the former Bureaus of Commodity Distribution and Child Nutrition Services, was created to more accurately reflect the mission of the organizational unit.

The Child Nutrition program consists of six components in public and non-public schools, residential and non-residential childcare institutions, day care centers, recreation centers, and other agencies that qualify for this aid. Program responsibilities include developing, disseminating, evaluating, and approving all pertinent program documents required for participation; providing technical assistance in the areas of implementation, facilities improvement, and food service methods; on-site monitoring of programs for compliance with State and federal regulations; and providing financial assistance.

State and federal reimbursements are paid to school districts for part of the cost of school lunches and federal funds are paid to offset part of the cost of school breakfasts. In addition, non-school programs receive federal foods, especially for disadvantaged children.

The Commodity Distribution program requisitions, receives, handles, stores, and distributes federal surplus food made available by the United States Department of Agriculture to State, county and municipal institutions, schools, charitable and welfare organizations, and needy individuals. It also processes some of the federally-donated basic food commodities. Inspections are made in all organizations and institutions for compliance.

The Temporary Emergency Food Assistance Program (TEFAP) distributes federally-donated food commodities to

needy citizens through a network of food centers, food banks, and food pantries.

06. **Marketing and Development Services.** This division, formerly the Division of Markets, was renamed to accurately reflect its intent. The program conducts advertising, market development, and promotional activities to create a positive image of New Jersey's agricultural products and to increase consumer awareness and sales.

This "Jersey Fresh" Program, aimed at domestic and foreign consumers, assists New Jersey farmers in expanding their market share. Individual product promotions are also conducted by eight agricultural commodity councils.

Programs for the promotion of the New Jersey horse industry are conducted with funds derived from a small percentage of the pari-mutuel handle at both the thoroughbred and standard bred racetracks. Growth of the horse breeding industry is encouraged through monies awarded in the form of stakes purses and breeders awards. The continued growth and expansion of the Horse Park of New Jersey is supported.

This program also contains the Agricultural Chemistry Program, which determines compliance with the stated contents of animal feeds, fertilizers, and liming materials offered for sale for farm and non-farm use. Random inspections and analyses of raw material commodities and animal feeds are conducted to determine the presence of natural and anthropogenic contaminants and adulterants.

Through on-site inspections at agribusiness plants, consumers are assured a supply of the highest quality fresh fruits and vegetables, fish, shell eggs, egg, and poultry products. Official inspection and grading services are provided to farmers, packers, processors, and wholesale and retail markets under formal agreements with the United States Departments of Agriculture and Commerce.

The Dairy program is responsible for fostering a stable and competitive dairy industry, including the regulation and enforcement of the production, processing, distribution, and sales of fluid dairy products. In addition, this program licenses dealers who purchase milk from New Jersey farmers or who sell fluid dairy products to other dealers and to retail outlets. In order to be licensed, the dealers must post a bond with the Secretary of Agriculture conditioned upon the payment of all amount due and owing to New Jersey farmers.

08. **Farmland Preservation.** The State Agriculture Development Committee (SADC) administers New Jersey's Farmland Preservation Program.

The Farmland Preservation Program compensates farm owners for their development rights if they deed-restrict their farms against future development. The terms of these deed restrictions can be permanent or for as short a period as eight years. Future owners of permanently preserved farms must comply with all deed restrictions.

The SADC also coordinates a variety of programs with participating counties and farmland owners to protect important farmland in sufficient quantity and quality to foster long-term agricultural viability. It is also charged with specific right-to-farm responsibilities relating to agriculture.

99. **Administration and Support Services.** The State Board of Agriculture consists of eight farmers, elected at the annual Agricultural Convention. The Board is empowered to establish programs, regulations, and policies that it deems essential. The Secretary of Agriculture serves as Secretary to the Board and Chief Executive of the Department, and is a member of the Governor's Cabinet. The Secretary is

AGRICULTURE

responsible for implementing State laws, regulations, and policies established by the Board of Agriculture.

The Secretary's office provides overall planning, coordination, and priority guidance for Department programs, policy and plan development, general hearing services, agricultural

information services, and executive and legislative liaison. Department-wide general administrative services are provided, including services related to personnel and employee relations, fiscal control, management systems, and other administrative functions.

EVALUATION DATA

	Actual FY 2006	Actual FY 2007	Revised FY 2008	Budget Estimate FY 2009
PROGRAM DATA				
Animal Disease and Plant Pest and Disease Control				
Animal Disease Control:				
Regulatory licenses	645	645	645	645
General, special, and other laboratory exams	48,000	48,000	48,000	48,000
Plant Pest and Disease Control:				
Nurseries and dealers certified free of plant pests	1,739	1,739	1,800	1,800
Nursery acreage certified free of plant pests	18,877	20,000	20,000	20,000
Bee colonies found disease free	98%	97%	95%	98%
Seed meeting truth in labeling requirements	95%	95%	95%	95%
Pesticide not applied (lbs.)	1,280,000	1,280,000	1,280,000	1,280,000
Forest and crop acreage stabilized biologically	992,000	992,000	992,000	992,000
Forested acres protected from gypsy moth infestations	656	40,000	80,000	80,000
Major exotic insect and plant disease field surveys	9	9	9	9
Agriculture and Natural Resources				
Aquaculture production (lbs.)	44,000,000	44,000,000	44,000,000	44,000,000
Soil and Water Conservation Programs:				
Land protected from soil erosion and sedimentation (acres)	28,647	31,500	30,000	30,000
Farmland subject to nonpoint source pollution control (acres)	455,000	455,000	455,000	455,000
Food and Nutrition Services				
Temporary emergency food assistance delivered (lbs.)	8,500,000	8,250,000	8,300,000	8,350,000
State Food Purchase Program (lbs.)	---	3,900,000	5,200,000	5,200,000
School lunch delivered (lbs.)	26,074,105	30,464,143	29,500,000	29,500,000
Marketing and Development Services				
Agricultural inputs satisfying label guarantees:				
Fertilizer	88%	93%	88%	85%
Lime	70%	100%	90%	90%
Feed	95%	96%	95%	95%
Milk license financial disputes settled	216	268	275	275
Producers licensed to pack Jersey Fresh logo	265	278	325	360
Agricultural commodities inspected and graded (lbs.)	793,552,887	805,517,445	825,000,000	895,000,000
Individual store outlets featuring NJ agricultural products	3,500	3,500	3,500	3,500
Racing mares bred	1,540	1,050	900	800
Farmland Preservation				
Cumulative acres permanently preserved	147,925	158,721	170,000	182,000
Cumulative farms permanently preserved	1,408	1,579	1,760	1,930
Eight year program - acres preserved	24,366	14,923	14,000	14,000
County/Municipal financial participation	\$36,846,606	\$63,128,883	\$60,000,000	\$60,000,000
PERSONNEL DATA				
Affirmative Action Data				
Male Minority	19	18	19	22
Male Minority %	7.0	7.1	7.8	9.6
Female Minority	41	35	38	46
Female Minority %	15.2	13.7	15.5	20.2
Total Minority	60	53	57	68
Total Minority %	22.2	20.8	23.3	29.8

AGRICULTURE

	Actual FY 2006	Actual FY 2007	Revised FY 2008	Budget Estimate FY 2009
Position Data				
Filled Positions by Funding Source				
State Supported	132	114	113	96
Federal	61	63	58	58
All Other	77	78	74	74
Total Positions	270	255	245	228
Filled Positions by Program Class				
Animal Disease Control	24	22	26	26
Plant Pest and Disease Control	44	42	34	34
Agriculture and Natural Resources	26	24	23	24
Food and Nutrition Services	58	57	55	55
Marketing and Development Services	62	58	56	55
Administration and Support Services	24	22	21	4
Farmland Preservation	32	30	30	30
Total Positions	270	255	245	228

Notes:

Actual payroll counts are reported for fiscal years 2006 and 2007 as of December and revised fiscal year 2008 as of January. The Budget Estimate for fiscal year 2009 reflects the number of positions funded, including a reduction for the savings and efficiencies from the consolidation of the Department. All Other includes positions supported by fees or other dedicated resources previously reported as State Supported.

APPROPRIATIONS DATA (thousands of dollars)

Year Ending June 30, 2007					Year Ending June 30, 2009				
Orig. & (S)Supple- mental	Reapp. & (R)Recpts.	Transfers & (E)Emer- gencies	Total Available	Total Expended		2008 Prog. Class.	Adjusted Approp.	Requested	Recom- mended
<u>DIRECT STATE SERVICES</u>									
Distribution by Fund and Program									
1,315	397	-15	1,697	1,349	Animal Disease Control	01	1,355	1,255	1,255
2,090	857	-208	2,739	2,499	Plant Pest and Disease Control	02	2,139	1,864	1,864
792	276	85	1,153	787	Agriculture and Natural Resources	03	1,176	1,101	1,101
338	---	---	338	338	Food and Nutrition Services	05	343	343	343
2,261	1,001	-207	3,055	2,862	Marketing and Development Services	06	2,274	1,624	1,624
1,740	670	---	2,410	2,410	Farmland Preservation	08	1,771	1,771	1,771
458	43	647	1,148	1,131	Administration and Support Services	99	663	497	497
8,994	3,244	302	12,540	11,376	Total Direct State Services		9,721 ^(a)	8,455	8,455
Less:									
---	---	---	---	---	Department Consolidation Savings ^(b)		---	(525)	(525)
---	---	---	---	---	Total Deductions		---	(525)	(525)
8,994	3,244	302	12,540	11,376	Total State Appropriation		9,721	7,930	7,930
Distribution by Fund and Object									
Personal Services:									
5,225	47 935 ^R	-45	6,162	6,078	Salaries and Wages		6,106	5,406	5,406
5,225	982	-45	6,162	6,078	Total Personal Services		6,106	5,406	5,406
167	77	-34	210	183	Materials and Supplies		128	128	128
211	18	231	460	428	Services Other Than Personal		159	159	159
195	1	-34	162	160	Maintenance and Fixed Charges		195	195	195
Special Purpose:									
---	307 90 ^R	-49	348	---	Animal Disease Control	01	---	---	---

AGRICULTURE

Year Ending June 30, 2007					Year Ending June 30, 2009				
Orig. & (S)Supplemental	Reapp. & (R)Recpts.	Transfers & (E)Emergencies	Total Available	Expended	Prog. Class.	2008 Adjusted Approp.	Requested	Recommended	
<u>DIRECT STATE SERVICES</u>									
---	169 35 ^R	151	355	304	Plant Pest and Disease Control	02	---	---	---
200	---	---	200	200	Asian Longhorned Beetle Monitoring	02	150	---	---
---	87 118 ^R	---	205	149	Beneficial Insect Laboratory	02	---	---	---
---	272 4 ^R	---	276	14	Environmental Services	03	---	---	---
338	---	---	338	338	Temporary Emergency Food Assistance Program	05	343	343	343
826	193	---	1,019	827	Promotion/Market Development	06	800	400	400
---	---	134	134	134	Nutrition- State Match	06	---	---	---
---	144 ^R	-144	---	---	Marketing and Development Services	06	---	---	---
90	---	---	90	90	Agricultural Right-to-Farm Program	08	90	90	90
1,650	670 ^R	---	2,320	2,320	Open Space Administrative Costs	08	1,681	1,681	1,681
18	---	---	18	17	Expenses of State Board of Agriculture	99	18	18	18
28	---	---	28	28	Affirmative Action and Equal Employment Opportunity	99	28	28	28
46	77	92	215	106	Additions, Improvements and Equipment		23	7	7
---	---	---	---	---	<i>Less: Deductions</i>		---	(525)	(525)
<u>GRANTS-IN-AID</u>									
Distribution by Fund and Program									
950	412	640	2,002	1,586	Agriculture and Natural Resources	03	600	---	---
4,000	---	---	4,000	4,000	Food and Nutrition Services	05	4,000	4,000	4,000
75	---	90	165	165	Marketing and Development Services	06	75	75	75
---	---	---	---	---	Farmland Preservation	08	300	---	---
5,025	412	730	6,167	5,751	Total Grants-in-Aid		4,975	4,075	4,075
Distribution by Fund and Object									
Grants:									
950	244	250	1,444	1,215	Conservation Assistance Program	03	600	---	---
---	168	390	558	371	Conservation Cost Share Program	03	---	---	---
3,000	---	---	3,000	3,000	Hunger Initiative/Food Assistance Program	05	4,000	4,000	4,000
1,000	---	---	1,000	1,000	Capital Improvements for Storing Food for Food Banks	05	---	---	---
75	---	---	75	75	Promotion/Market Development	06	75	75	75
---	---	90	90	90	New Jersey Museum of Agriculture	06	---	---	---
---	---	---	---	---	Soil and Water Conservation Grants	08	300	---	---
<u>STATE AID</u>									
Distribution by Fund and Program									
11,677	2,593	---	14,270	11,107	Food and Nutrition Services	05	11,677	10,823	10,823
50	---	-7	43	43	Farmland Preservation	08	50	50	50
11,727	2,593	-7	14,313	11,150	Total State Aid		11,727	10,873	10,873

AGRICULTURE

Year Ending June 30, 2007					Year Ending June 30, 2009				
Orig. & (S)Supple- mental	Reapp. & (R)Recpts.	Transfers & (E)Emer- gencies	Total Available	Expended	Prog. Class.	2008 Adjusted Approp.	Requested	Recom- mended	
STATE AID									
Distribution by Fund and Object									
State Aid:									
3,854	1,879	---	5,733	2,925	School Breakfast - State Aid Grants	05	3,854	3,000	3,000
439	---	---	439	428	Non-Public Nutrition Aid - State Aid Grants	05	439	439	439
7,384	714	---	8,098	7,754	School Lunch Aid - State Aid Grants	05	7,384	7,384	7,384
50	---	-7	43	43	Payments in Lieu of Taxes	08	50	50	50
CAPITAL CONSTRUCTION									
Distribution by Fund and Program									
---	7	---	7	---	Plant Pest and Disease Control	02	250	---	---
---	991	---	991	---	Agriculture and Natural Resources	03	---	---	---
---	801	---	801	---	Farmland Preservation	08	---	---	---
---	1,799	---	1,799	---	Total Capital Construction		250	---	---
Distribution by Fund and Object									
Division of Plant Industry									
---	---	---	---	---	Chromatographic Diagnostic Equipment	02	250	---	---
---	7	---	7	---	Renovations to Phillip Alampi Beneficial Insect Laboratory	02	---	---	---
State Agriculture Development Committee									
---	991	---	991	---	Direct Easement	03	---	---	---
---	801	---	801	---	Open Space - Local Match	08	---	---	---
25,746	8,048	1,025	34,819	28,277	Grand Total State Appropriation		26,673	22,878	22,878
OTHER RELATED APPROPRIATIONS									
Federal Funds									
789	---	---	---	---					
430 ^S	504	195	1,918	1,069	Animal Disease Control	01	661	1,004	1,004
4,656	1,454	---	6,110	2,425	Plant Pest and Disease Control	02	4,935	4,865	4,865
480	119	---	599	374	Agriculture and Natural Resources	03	480	480	480
306,390	4,887	---	311,277	257,089	Food and Nutrition Services	05	317,290	342,095	342,095
446	---	---	---	---					
25 ^S	1,134	---	1,605	1,390	Marketing and Development Services	06	499	501	501
---	125	---	125	125	Commodity Distribution	07	---	---	---
9,429	8,399	---	17,828	8,807	Farmland Preservation	08	4,525	4,525	4,525
---	16	---	16	16	Administration and Support Services	99	---	---	---
322,645	16,638	195	339,478	271,295	Total Federal Funds		328,390	353,470	353,470
All Other Funds									
---	25 ^R	---	25	22	Animal Disease Control	01	100	80	80
---	2	---	---	---					
---	14 ^R	---	16	8	Plant Pest and Disease Control	02	305	300	300
---	48	---	---	---					
---	278 ^R	---	326	281	Agriculture and Natural Resources	03	499	372	372
---	1,321	---	---	---					
---	1,579 ^R	---	2,900	1,533	Food and Nutrition Services	05	1,516	1,516	1,516
---	2,841	---	---	---					
---	7,300 ^R	91	10,232	7,357	Marketing and Development Services	06	7,566	7,064	7,064
---	2	---	---	---					
---	1 ^R	---	3	---	Commodity Distribution	07	---	---	---

Language Recommendations -- Grants-In-Aid - General Fund

The expenditure of funds for the Conservation Cost Share program shall be based upon an expenditure plan subject to the approval of the Director of the Division of Budget and Accounting.

Notwithstanding the provisions of any law or regulation to the contrary, \$540,000 shall be transferred from the Department of Environmental Protection's Water Resources Monitoring and Planning - Constitutional Dedication special purpose account and is appropriated to support the Conservation Cost Share program in the Department of Agriculture or any entity succeeding to the duties and functions of the Department of Agriculture, pursuant to separate legislation, on or before September 1, 2008. Further additional sums may be transferred pursuant to a Memorandum of Understanding between the Department of Environmental Protection and the Department of Agriculture or any entity succeeding to the duties and functions of the Department of Agriculture, pursuant to separate legislation, from the Department of Environmental Protection's Water Resources Monitoring and Planning - Constitutional Dedication account to support non-point source pollution control programs in the Department of Agriculture or any entity succeeding to the duties and functions of the Department of Agriculture, pursuant to separate legislation, subject to the approval of the Director of the Division of Budget and Accounting. The unexpended balance of this program at the end of the preceding fiscal year is appropriated for the same purpose, subject to the approval of the Director of the Division of Budget and Accounting.

The unexpended balances at the end of the preceding fiscal year in the Conservation Assistance Program are appropriated for the same purpose.

Notwithstanding the provisions of any law or regulation to the contrary, \$250,000 shall be transferred from the Department of Environmental Protection's Water Resources Monitoring and Planning - Constitutional Dedication special purpose account and is appropriated for the Animal Waste Management portion of the Conservation Assistance Program in the Division of Agricultural and Natural Resources in the Department of Agriculture or any entity succeeding to the duties and functions of the Department of Agriculture, pursuant to separate legislation.

The unexpended balances at the end of the preceding fiscal year in the Capital Improvements for Storing Food for Food Banks account are appropriated for the same purpose.

Language Recommendations -- State Aid - General Fund

The unexpended balances at the end of the preceding fiscal year in the School Breakfast - State Aid Grants account are appropriated for the same purpose.

Of the amounts hereinabove appropriated for the Department of Agriculture or any entity succeeding to the duties and functions of the Department of Agriculture, pursuant to separate legislation, such sums as the Director of the Division of Budget and Accounting shall determine from the amount listed under School Nutrition in the Department of Agriculture schedule included in the Governor's Budget Message and Recommendations shall first be charged to the State Lottery Fund.

The unexpended balances at the end of the preceding fiscal year in the School Lunch and Non-Public Nutrition Aid - State Aid Grants accounts are appropriated for the same purpose.