

2012 FFA Landscape Design Career Development Event
Supplemental Information

1. Type of House: This is a brick ranch which has not yet been built but the homeowners want to get ideas for their landscaping. The floor plan is shown on page 3 of this document.
2. Lot: The property is a bit irregular – refer to the plan view and dimension drawings for the exact dimensions. The road is about 5 feet lower than the house so there is a gentle slope from the front of the house down to the road. The back property is mostly level.
3. Family: The homeowner, Marlene Case, is a geologist who works for a Gas Drilling Company. Ms. Case often needs to travel for her job and needs a low maintenance landscape. When she is home she does love to entertain and frequently has friends and family over for cook outs whenever the weather permits. There is a sliding door which provides access from the kitchen and Family room out to the backyard. This sliding door was a plan modification which Ms. Case made in the house design. When completed, the front of the home will face north.
4. Scope of the work:
 - A. Outdoor entertaining space is needed, low maintenance landscaping, and also, the client is very environmentally conscious and wants to conserve water, use native plants, avoid the use of invasive species and create as natural a landscape that will still allow her to enjoy her property.
 - B. The soil is mostly a clay loam.
 - C. Topsoil is about 8 inches deep with a pH of 5.
 - D. The entire lot should be considered when preparing this design, including the front yard, side yards, backyard, and perimeter of the property.

5. Project Requirements:

Finished projects may be hand rendered or developed using a CAD program but all projects must meet the following criteria:

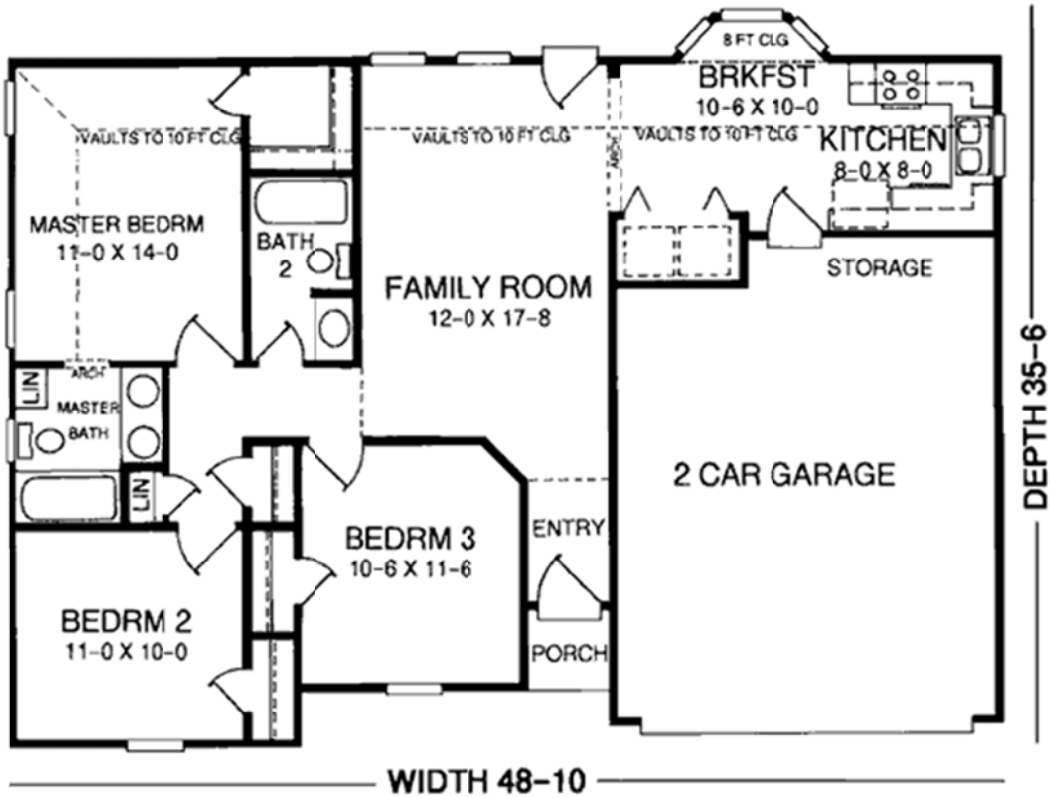
- A. All drawings should be submitted on 18" by 24" sheets and a copy of the original drawing is preferred. Originals will be accepted if a student is unable to get copies made. A plan view drawing of the finished project is required. Color, Imaging, or Elevation drawings will not be judged.
- B. The finished scale should be 1" equals 10'.
- C. All students are required to submit a list of wholesale costs (see instructions).
- D. Students are required to use standard, commonly recognized symbols for plants. Symbols used should be representative of accepted professional drawing practices.
 - Plant symbols should be drawn representing plants in scale at reasonable mature sizes. It is recommended that a reference such as The Manual of Woody Plants, Michael Dirr be used in determining plant spread (width). Nursery wholesale price books may also contain helpful size information. For example, in the Manual of Woody Plants, Cornus kousa is shown at a spread equal to its height of 20 – 30 feet. A reasonable mature size to represent this tree would be 10 to 15 feet or approximately one-half to two-thirds the spread listed. A shrub which grows quickly would be more accurately represented at 2/3 of its mature spread, while a slow growing tree or shrub could be represented at ½ it's mature spread. It is recognized that site conditions will affect the size plants ultimately achieve.

Artist's rendering of proposed home – the plants are shown for artistic purposes only and should not be considered in the development of student designs.



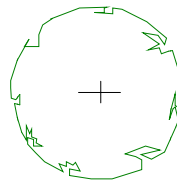
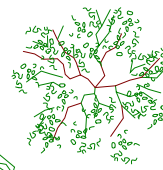
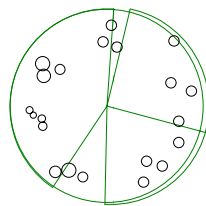
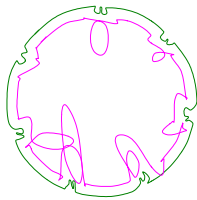
All dimensions for the location of the house on the lot should be taken from the Plan view of the house provided. The lot dimensions are on the FFA_2012_Dimensions.pdf. Note that, due to variations in printers, there may be slight differences in measurements taken from these documents and no penalties will be assessed for those slight measuring discrepancies.

Floor plan view of House showing room layout – note that all measurements should be taken from the plan provided as the measurements shown below may have changed. Also note that the homeowner changed some windows to a sliding door which is shown on the Lot plans.

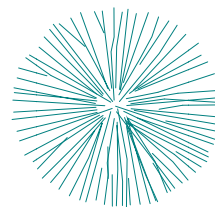
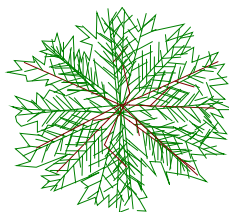
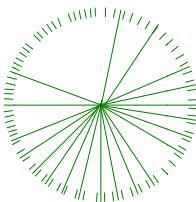


2012 LANDSCAPE DESIGN PROJECT SAMPLES

SAMPLE SYMBOLS ARE SUGGESTED STYLES AND ARE NOT SHOWN TO SCALE



DECIDUOUS
EVERGREEN



2012 LANDSCAPE DESIGN SUPPLEMENTAL INFORMATION
SAMPLE PLANT LIST

KEY	BOTANICAL NAME	COMMON NAME	QUAN
AR	Acer rubrum	Red Maple	5
CF	Cornus florida	Flowering Dogwood	2

SAMPLE TITLE BLOCK

CLIENT	DATE
SCALE OF DRAWING	
DESIGNER/CHAPTER	

Student must locate title block in lower right hand corner of the final drawing. The location of the plant materials list should be chosen to make it easy to read while viewing the design.

2012 LANDSCAPE DESIGN SUPPLEMENTAL INFORMATION
LANDSCAPE COSTS FORMAT

NOTE: The student must include an estimate of wholesale costs with their landscape design. The Estimate of Wholesale Costs will be worth 10 points as part of the design review component on the Landscape Design CDE. Students must include the unit costs and total costs for all plant material. Lawn areas may be priced out on the basis of square feet, hardscape areas such as patios and walkways should be priced out in square feet AND total cost. No labor, equipment or overhead costs are to be included. The source for all costs must be provided. The table below shows the preferred format for the wholesale cost estimate.

ITEM	UNIT	Qty	UNIT PRICE	TOTAL	Source
Acer rubrum 2" CAL	each	3	\$90.00	\$270.00	Northern Nurseries

Additional Resources:

The pdf file may be printed out on a large format printer or at a local print shop or office supply store and will print out at a scale of 1" = 10' feet. For any FFA Chapters who have difficulty getting copies made, full size (18 x 24) copy may be requested from the CDE Coordinator, Jan-Marie Traynor by email at jtraynor@ccm.edu. Please be sure to include your chapter name, teacher name and mailing address in your email request.