



Please submit public comments to sadc@ag.nj.gov

**MJC Properties
Block 102 Lot 3
Upper Deerfield,
Cumberland County**



Slide 2



Slide 3





Slide 5

Slide 6

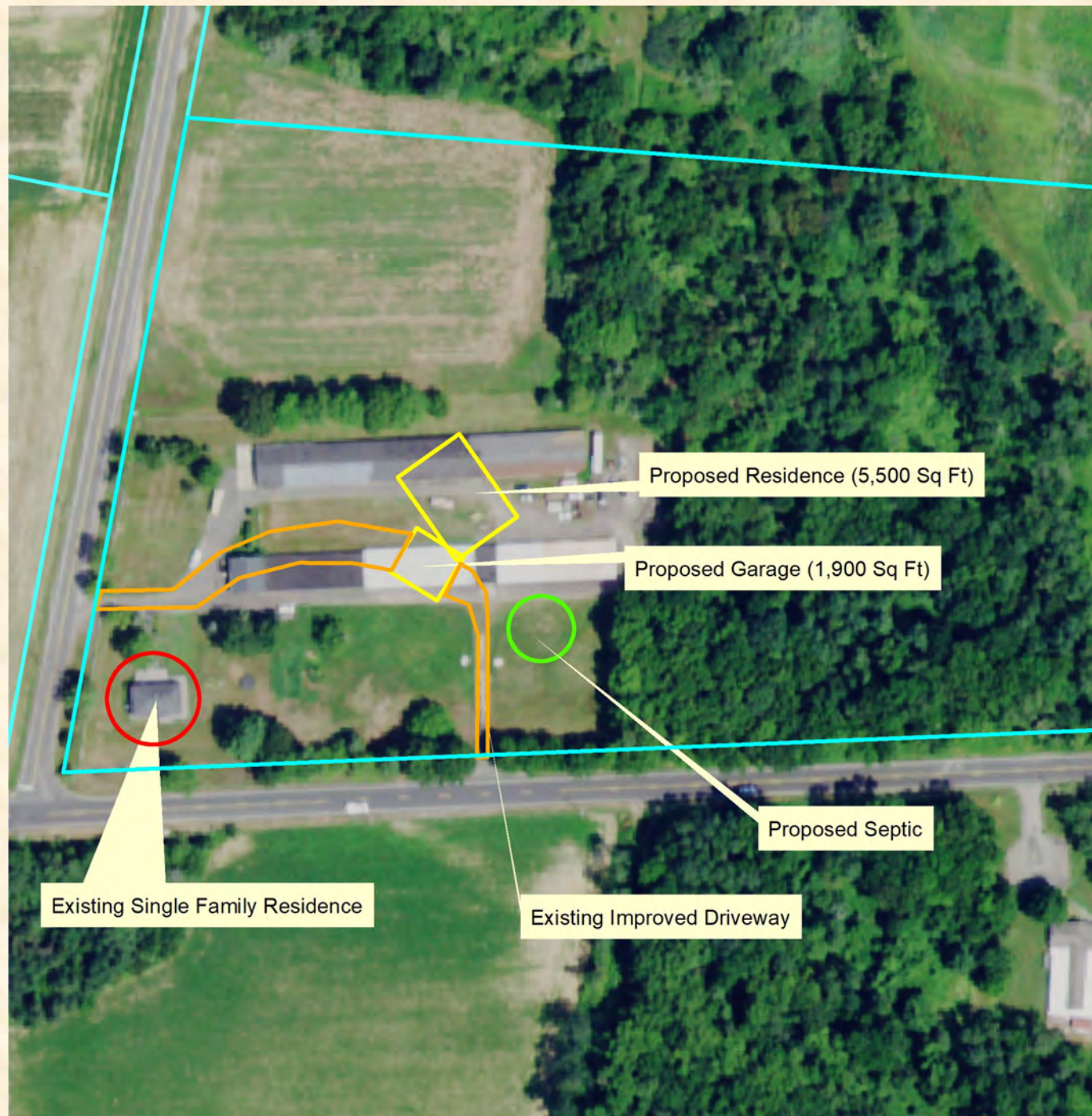


Slide 7

Virag - Non Farm
Freehold Twp.
Monmouth County



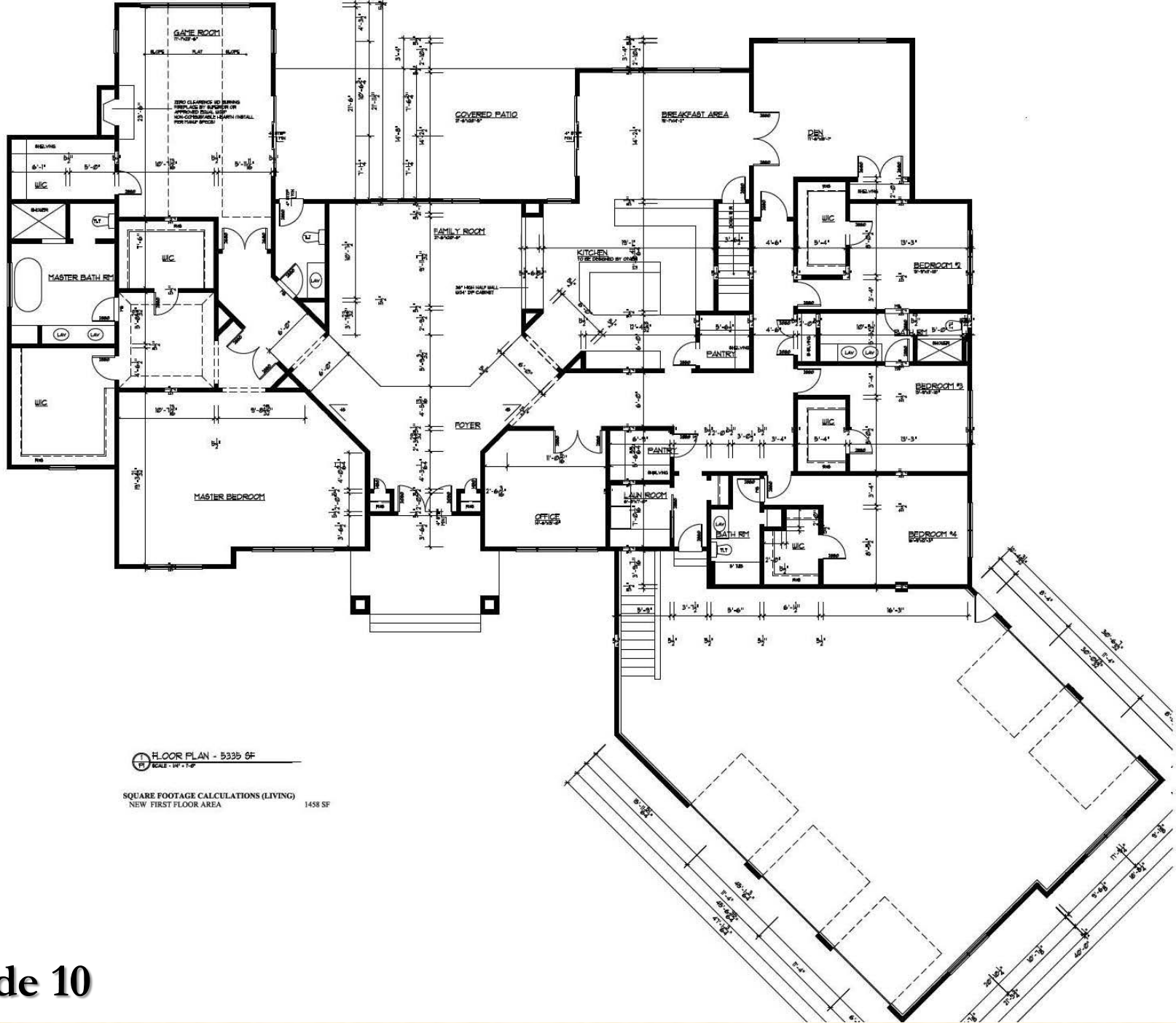
**Virag-Non, C &
Non, Diosdado
Block 87.01
Lots 9 & 9.01
Freehold Twp.
Monmouth County**



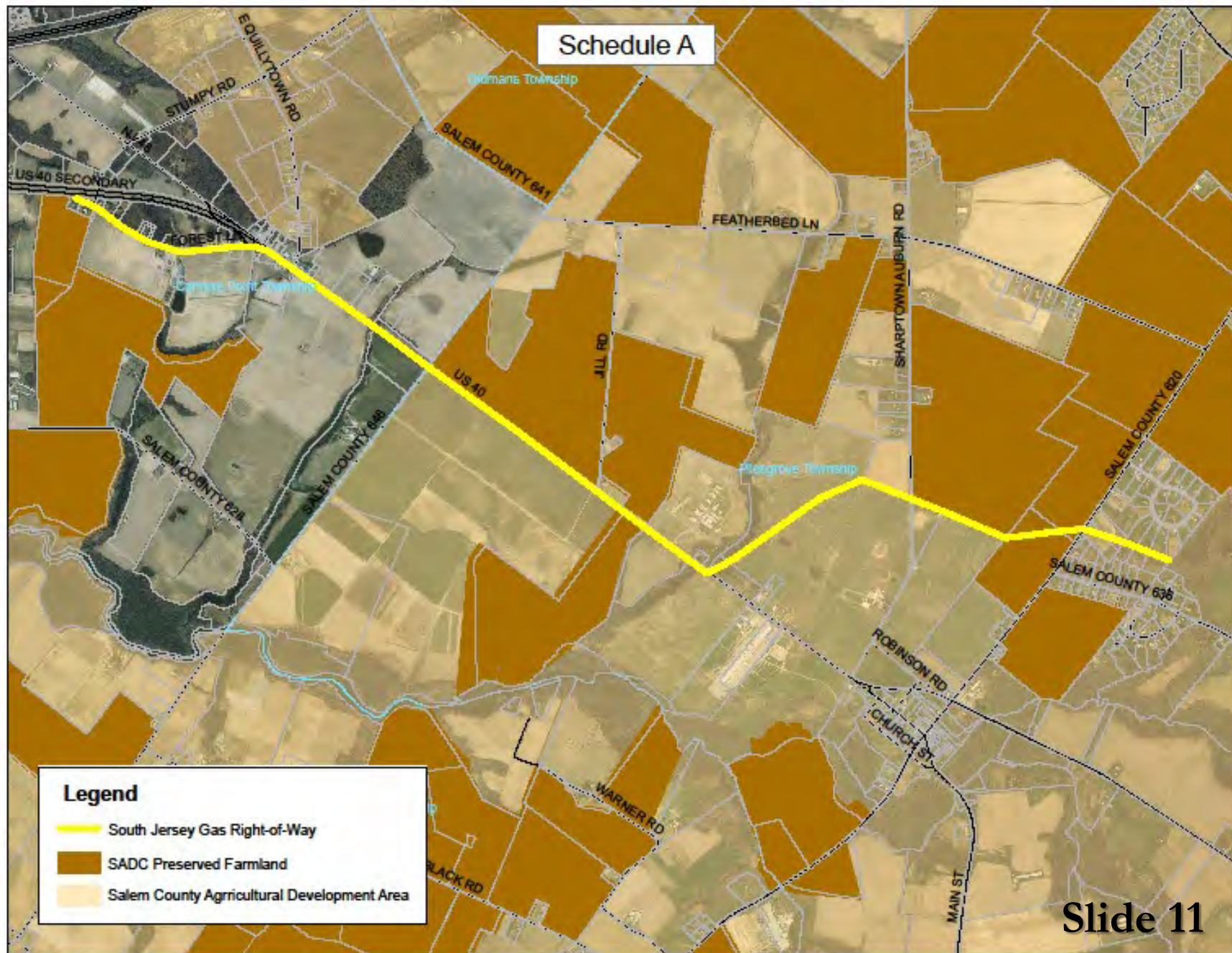
Slide 8

Slide 9



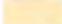




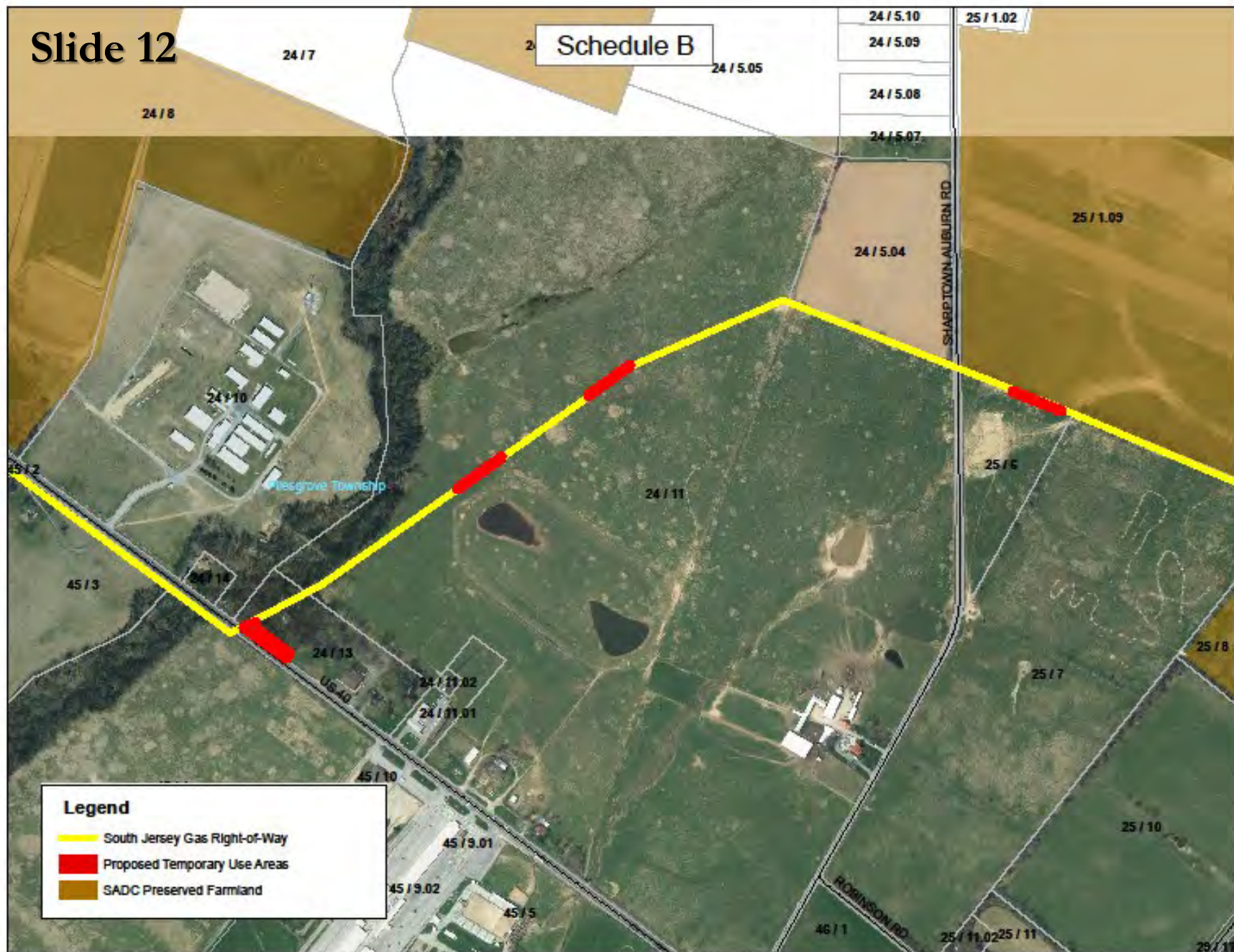
Schedule A



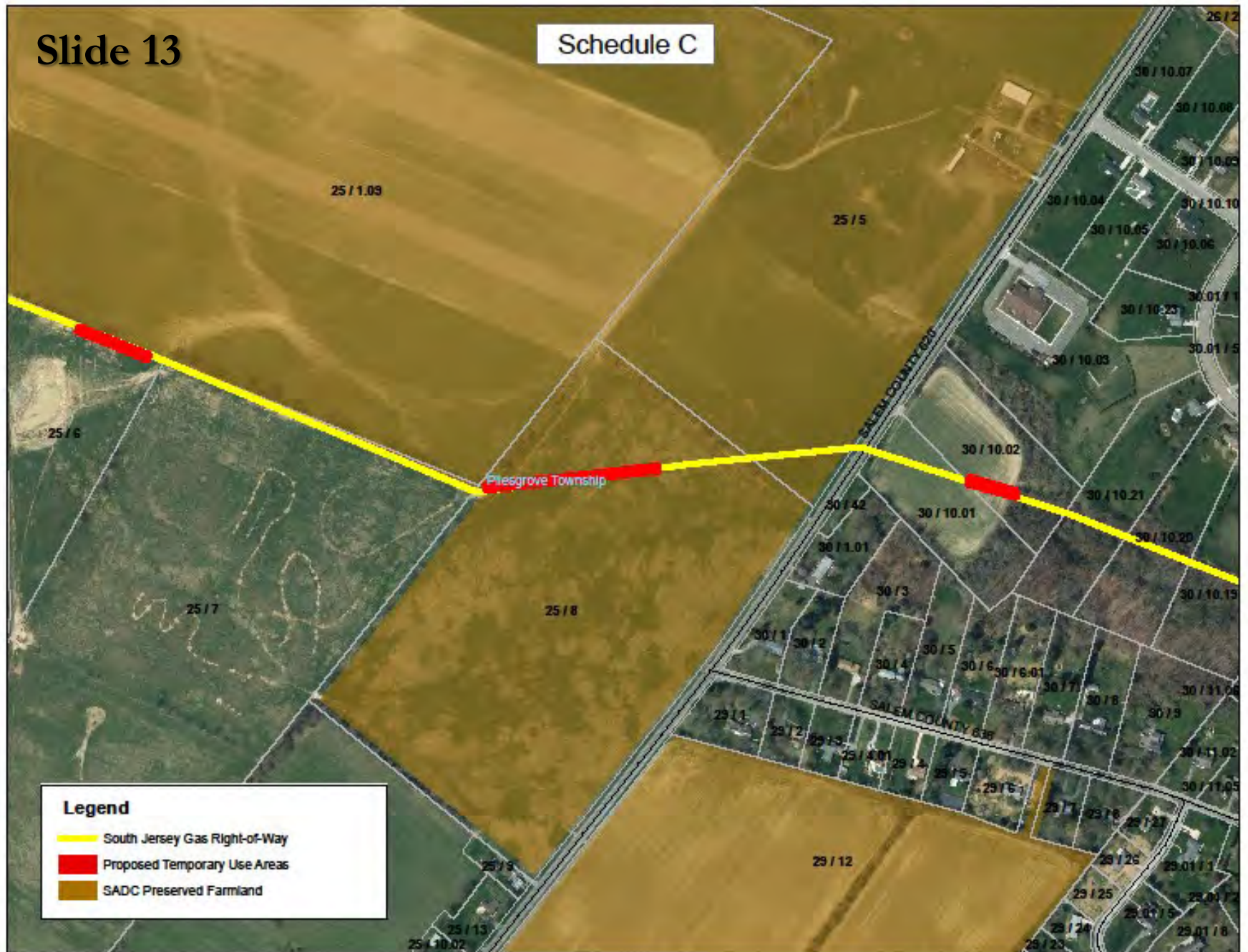
Legend

-  South Jersey Gas Right-of-Way
-  SADC Preserved Farmland
-  Salem County Agricultural Development Area

Slide 12



Schedule C








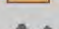




Acquisition Final Approvals



Slide 14

George W. & Terri Hitchner
134 Easement Acres
Hopewell Twp
Cumberland County
19 ac severable exception
91% in corn & hay



-  Property In Question
-  Exceptions
-  Preserved Easements
-  Transfer Development Rights (TDR)
-  Preserved: Highlands, Pinelands and Municipal
-  Active Applications
-  County Boundaries
-  Municipal Boundaries
-  Pinelands (or Highlands) Development Credits
-  Municipal, County and Non-Profit Preserved Open Space, State Owned Conservation Easements, & State Owned O/S & Recreation Easements

George W. Terri Hitchner
134 Easement Acres
Hopewell Twp
Cumberland County
19 ac severable exception
91% in corn & hay

Final approval is conditioned
upon a stream maintenance &
irrigation easement, for mutual
use and benefit, being recorded
prior to closing subject to the
review and approval of SADC
counsel



Kerr Ridge Associates (Lot 15 – 141.6 acres) & Kerr Ridge Farm LLC (Lot 3 – 263.23 acres)
+/- 405 Acres Hopewell Twp, Mercer Cty

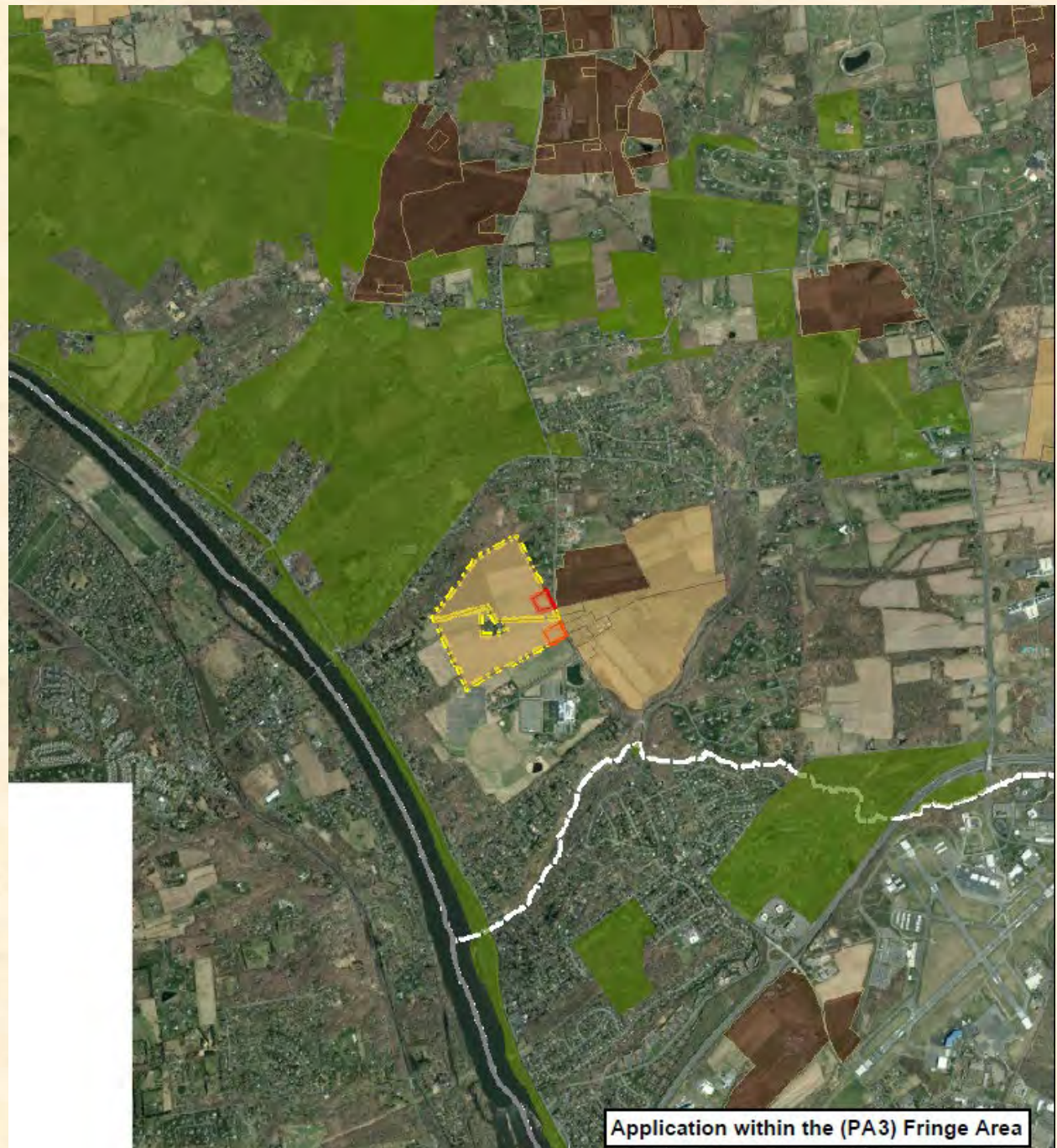


Kerr Ridge Associates (Lot 15 – 141.6 acres) & Kerr Ridge Farm LLC (Lot 3 – 263.23 acres)
+/- 405 Acres Hopewell Twp, Mercer Cty



Kerr Ridge Associates (Lot 15)
141.67 Acres
Hopewell Twp, Mercer County
Lot 15 N (to be 15.01) 66.985 ac
Lot 15 S (to be 15.02) 69.46 ac

Final approval is conditioned upon the landowners completing the subdivision of Lot 3 prior to closing and the simultaneous preservation of both lots.



Kerr Ridge Associates (Lot 15.02-S)
66.453 Easement Acres
Hopewell Twp, Mercer County
3.007 ac nonseverable exception
- Shall be limited to one single family residence which shall not exceed 4,000 square feet of livable area and ancillary structures will not be permitted to exceed 1,500 square feet of space

92% in hay and soybean

 Property In Question

 EN - (Non-Severable) Exception

 Other Parcels

 Wetlands Boundaries

 Existing Access lane

 Primary - Limited Access

 Federal or State Hwys

 County Roads

 Municipal/Local Roads

 Highlands (or Pinelands) Development Credits

 Municipal, County and Non-Profit Preserved Open Space, State Owned Conservation Easements, & State Owned O/S & Recreation Easements



Application within the (PA3) Fringe Area

Kerr Ridge Associates (Lot 15.01 - N)
66.985 Easement Acres
Hopewell Twp, Mercer County
3.032 ac nonseverable exception
- Shall be limited to one single family residence which shall not exceed 4,000 square feet of livable area and ancillary structures will not be permitted to exceed 1,500 square feet of space

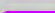


47% in hay and soybean



Kerr Ridge Associates (Lot 3)
263.5 Acres
Hopewell Twp, Mercer County
Lot 3 N (to be 3.02) 99.342 ac
Lot 3 S (to be 3.04) 152.604 ac

Final approval is conditioned upon the landowners completing the subdivision of Lot 3 prior to closing and the simultaneous preservation of both lots.

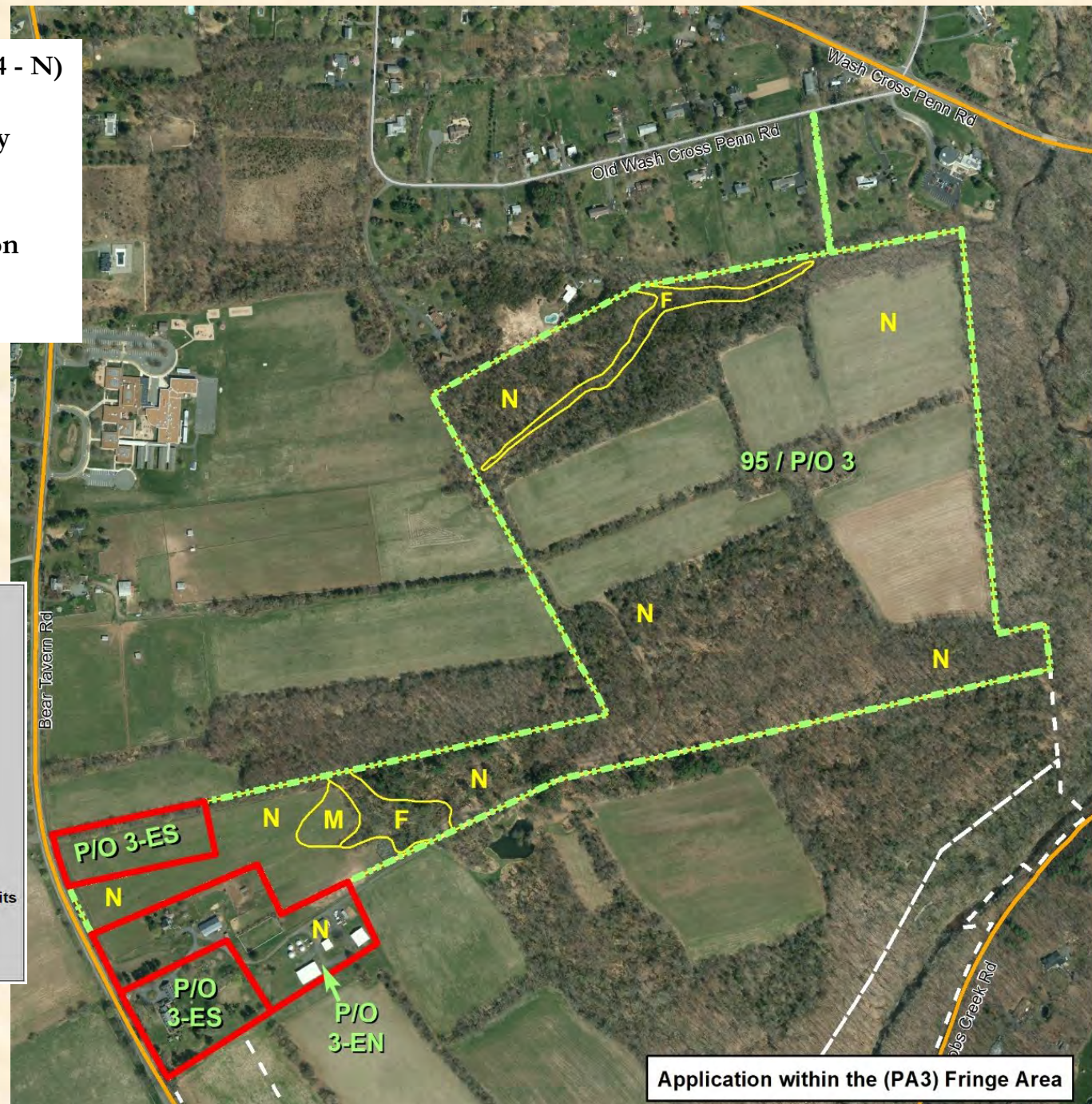


-  Property In Question
-  EN - (Non-Severable) Exception
-  Other Parcels
-  Wetlands Boundaries
-  Primary - Limited Access
-  Federal or State Hwys
-  County Roads
-  Municipal/Local Roads
-  Highlands (or Pinelands) Development Credits
-  Municipal, County and Non-Profit Preserved Open Space, State Owned Conservation Easements, & State Owned O/S & Recreation Easements

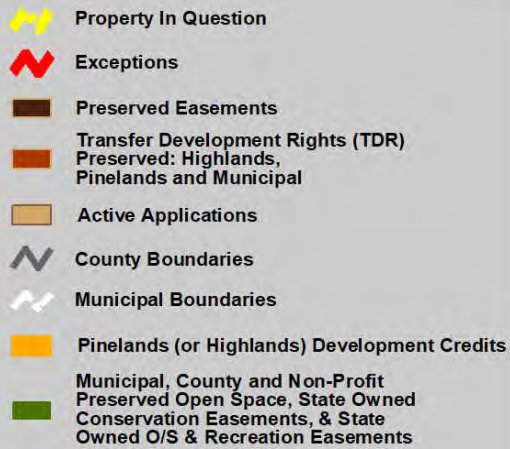


Kerr Ridge Associates (Lot 3.04 - N)
91.829 Easement Acres
Hopewell Twp, Mercer County
3.001 ac severable exception
4.054 ac severable exception
7.513 ac nonseverable exception
57% in corn and soybean

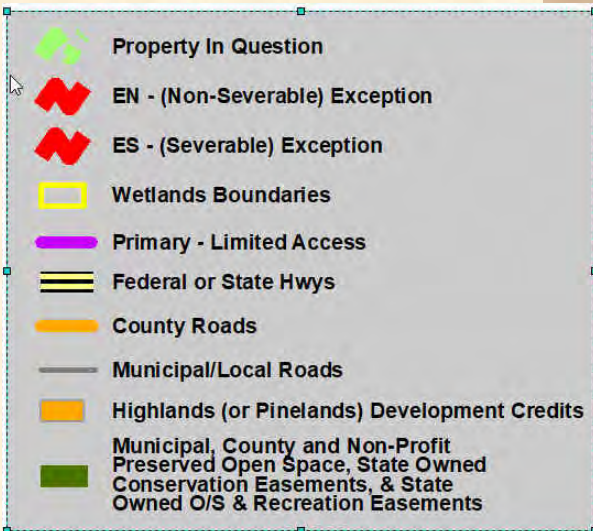
-  Property In Question
-  EN - (Non-Severable) Exception
-  ES - (Severable) Exception
-  Wetlands Boundaries
-  Other Parcels
-  Primary - Limited Access
-  Federal or State Hwys
-  County Roads
-  Municipal/Local Roads
-  Highlands (or Pinelands) Development Credits
-  Municipal, County and Non-Profit Preserved Open Space, State Owned Conservation Easements, & State Owned O/S & Recreation Easements



Richard D. Gardner
97.1 Easement Acres
Franklin Twp, Warren County
2 ac nonseverable exception
6 ac severable exception
85% in corn, hay, and livestock

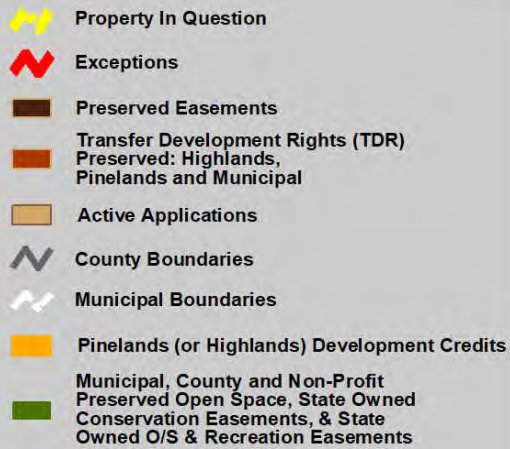


Richard D. Gardner
 97.1 Easement Acres
 Franklin Twp, Warren County
 2 ac nonseverable exception
 6 ac severable exception
 85% in corn, hay, and livestock



Application in both the Highlands Planning Area
 (Non-Conforming)
 and in the (PA4b) Rural Env Sens Area

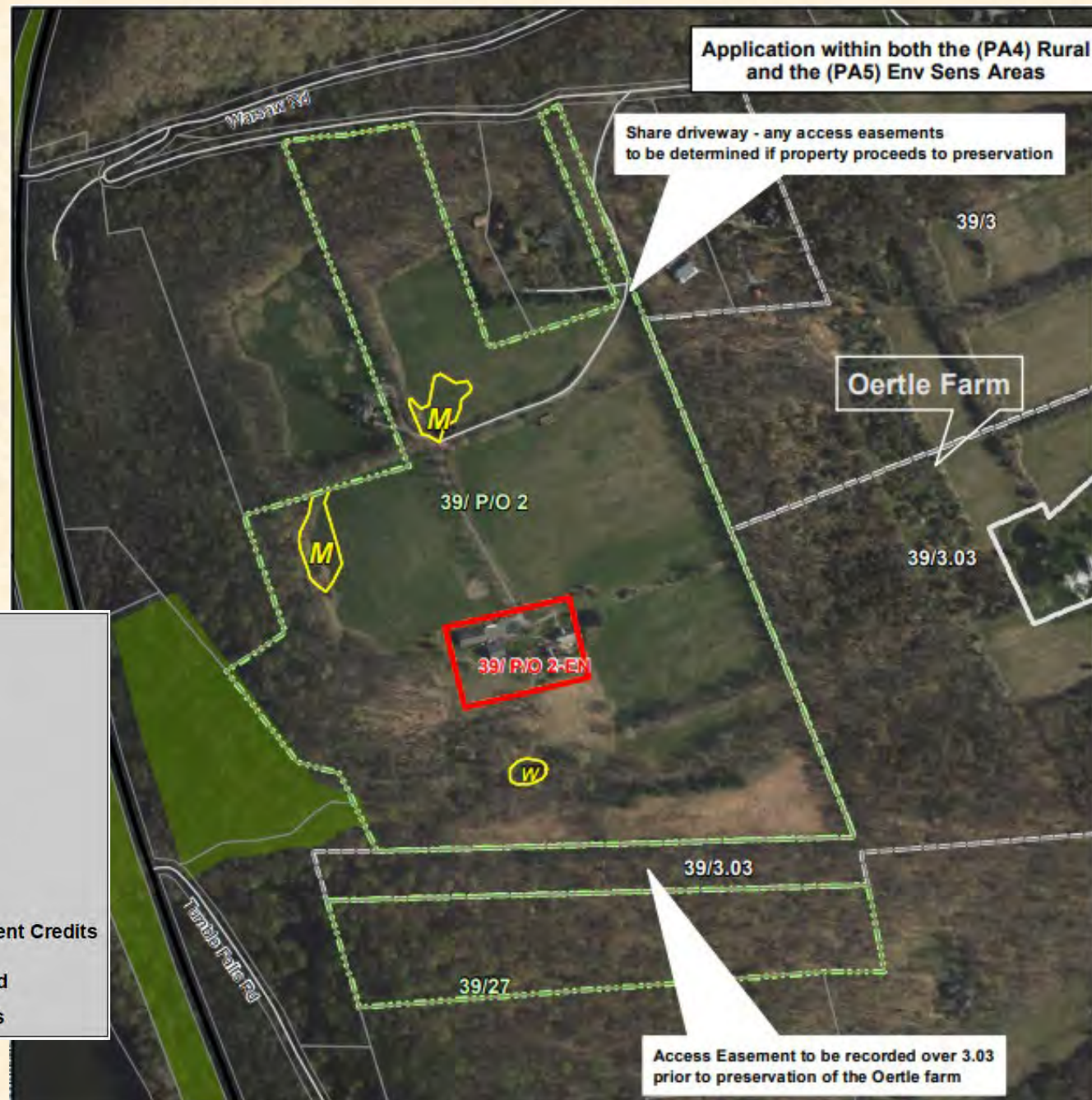
Paul & Vouletti Mitchell
72.8 Easement Acres
Kingwood Twp, Hunterdon Cty
2.5 ac nonseverable exception
48% in hay



Slide 27

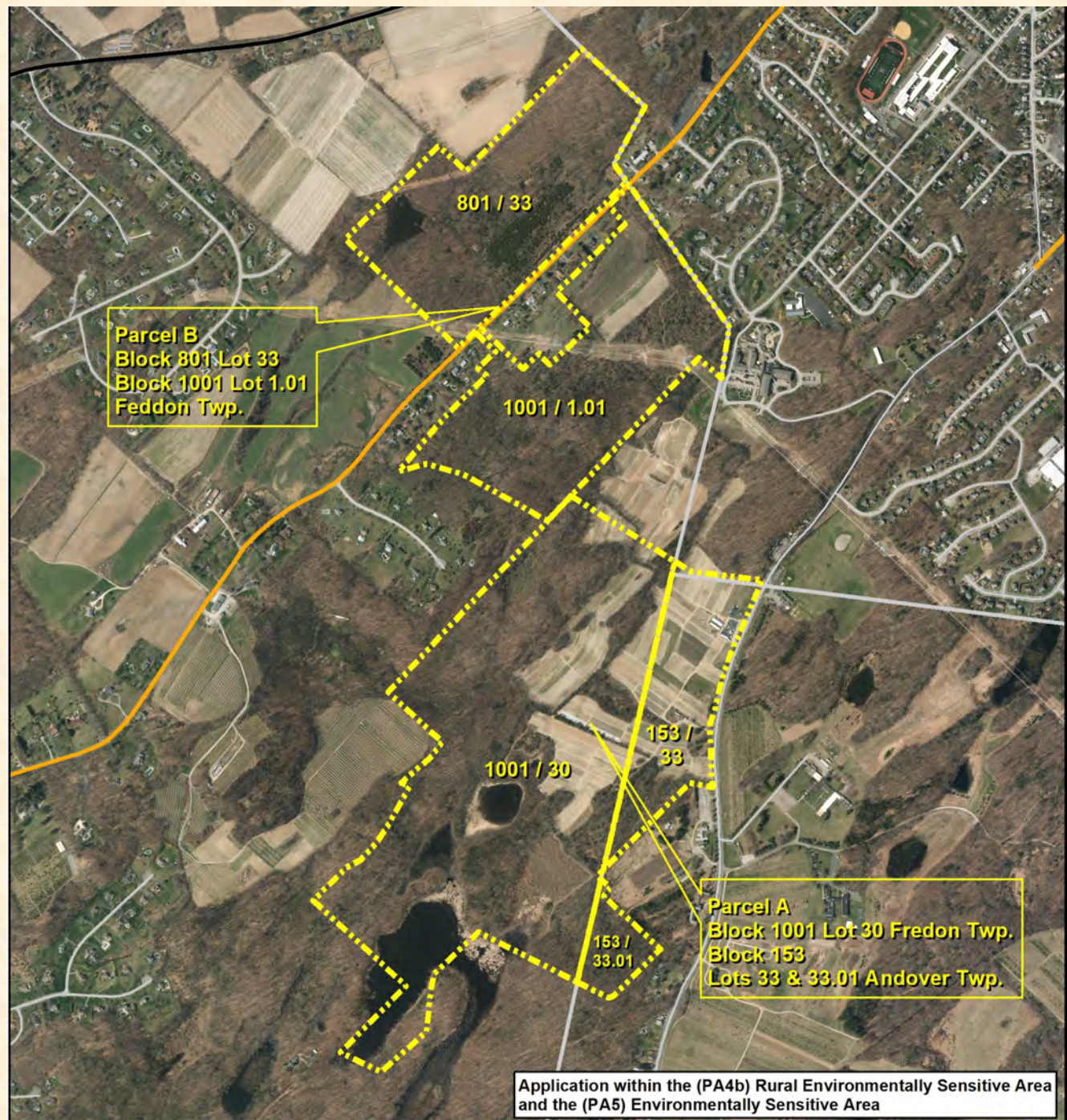


Paul & Vouletti Mitchell
 72.8 Easement Acres
 Kingwood Twp, Hunterdon Cty
 2.5 ac nonseverable exception
 48% in hay



- Property In Question
- EN - (Non-Severable) Exception
- Wetlands Boundaries
- Primary - Limited Access
- Federal or State Hwys
- County Roads
- Municipal/Local Roads
- Highlands (or Pinelands) Development Credits
- Municipal, County and Non-Profit Preserved Open Space, State Owned Conservation Easements, & State Owned O/S & Recreation Easements

Muckshaw Preserve







Slide 31



Slide 32



Slide 33

Slide 34



Slide 35





Slide 36

Slide 37





Please submit public comments to sadc@ag.nj.gov