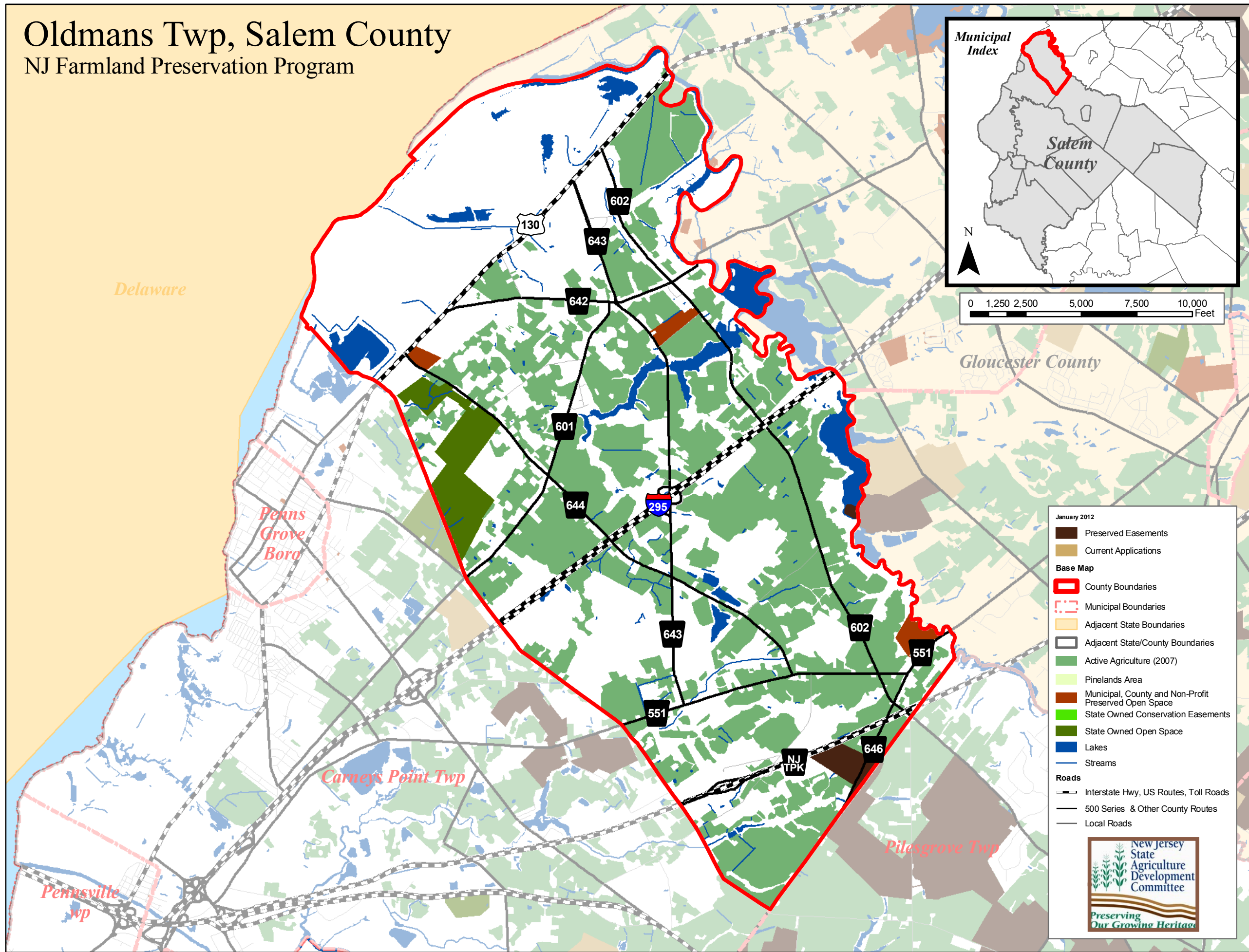


# Oldmans Twp, Salem County

## NJ Farmland Preservation Program



**Municipal Index**

Salem County

N

0 1,250 2,500 5,000 7,500 10,000 Feet

January 2012

- Preserved Easements
- Current Applications

**Base Map**

- County Boundaries
- Municipal Boundaries
- Adjacent State Boundaries
- Adjacent State/County Boundaries
- Active Agriculture (2007)
- Pinelands Area
- Municipal, County and Non-Profit Preserved Open Space
- State Owned Conservation Easements
- State Owned Open Space
- Lakes
- Streams

**Roads**

- Interstate Hwy, US Routes, Toll Roads
- 500 Series & Other County Routes
- Local Roads

New Jersey State Agriculture Development Committee

Preserving Our Growing Heritage