

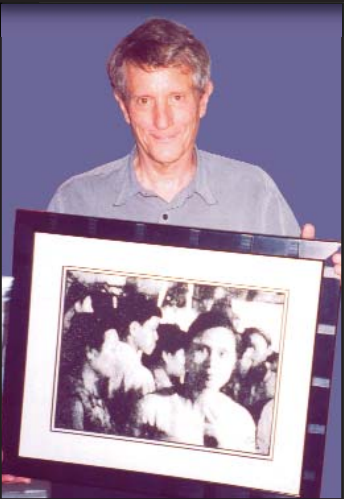


## Mercer County Senior Art Show

Mercer County Office on Aging is partnering with the Division of Culture and Heritage to present the Mercer County Senior Art Show from August 17 through August 27 at the Robbinsville Senior Center at 1117 Route 130 in Robbinsville.

Any Mercer County resident age 60 or older may submit artwork to the show for possible inclusion in the New Jersey Senior Citizen Art Show. All submissions must be the original work of the applicant, created within the last three years, and not previously entered in the Mercer County Senior Art Show. Applicants may submit one piece of art in any of the following categories: acrylic, computer-generated images, drawing, mixed media, oil, pastel, photography (including digital), prints, and watercolor. One winner in each category will move on to the state show at Meadow Lakes in October. There must be three entries per category before judging can take place.

For more information, please call (609) 989-6661 or visit [www.mercercounty.org](http://www.mercercounty.org).



### Senior Art Show Committee

Doris Hodges • Monica Maldonado • Lisa Tramo

### Directions to Robbinsville Senior Center at 1117 Route 130

**From West:** Take Rt. 33 East. Stay right at fork just past Town Center on Rt. 526. Take Rt. 526 across Rt. 130. Library is on the left, 400 feet from the intersection.

**From North:** Take Rt. 130 South past Hightstown; past Robbinsville Township Fire House (on the left). After Suburban Propane Gas Company (on the right), turn left at the second traffic light onto Rt. 526. Library is on left the 400 feet from the intersection.

**From South:** Take Rt. 130 North past I-195 overpass. Turn right at second light onto Rt. 526. Library is on left 400 feet from the intersection.

**From I-195:** Take Exit 5 N. Rt. 130 North.

**From the NJ Turnpike:** Take Exit 7A. Take I-195 W. to Exit 5. Take Rt. 130 North.



### Brian M. Hughes

Mercer County Executive

### Board of Chosen Freeholders

Anthony P. Carabelli, Freeholder Chair  
Daniel Benson • Ann M. Cannon • John A. Cimino  
Pasquale "Pat" Colavita, Jr.  
Keith V. Hamilton • Lucylle R.S. Walter

### Mercer County Department of Human Services

Marygrace Billek, *Director*

### Mercer County Office on Aging

Eileen Doremus, *Executive Director*

### Mercer County Division of Culture and Heritage

Idamis Pérez Margicin, *Chief*

### County of Mercer

McDade Administration Building  
640 South Broad Street, PO Box 8068  
Trenton, NJ 08650  
[www.mercercounty.org](http://www.mercercounty.org)



# Mercer County Senior Art Show



**August 17-27**

Hosted by  
**Robbinsville Senior Center**



### Eligibility Guidelines

Any visual artist, age 60 or over, currently residing in Mercer County, may submit one entry completed within the past three years. Artwork must be the original work of the applicant and must not have been previously entered in the Mercer County Art Show. Entries winning first place automatically advance to the State competition. Only one professional and one non-professional first-place winner is accepted in the state show in each of the following categories: acrylic, digital imagery, drawing, mixed media, oil, pastel, photography, print, and watercolor. Judging will be based on not less than three entries per category.

### Categories

- Acrylic.
- Computer-generated imagery created using a pixel-based painting or graphics program, such as Photoshop, Illustrator or Corel Painter. Excludes digitally altered photos and images made using a scanner.
- Drawing: pencil, pen, ink, graphite, markers.
- Mixed Media: combines two or more media, no one of which clearly predominates; includes collage and assemblage.
- Oil.
- Pastel, chalk, charcoal, oil pastel.
- Photography created using a film-based digital or pinhole camera, scanner, including color, black & white or tinted or digitally manipulated photos, photograms.
- Print: etching, engraving, lithograph, woodcut, monoprint, monotype, silkscreen.
- Watercolor, gouache.

### Artist Classification

**Professional:** Person who meets at least two of the following criteria:

- sold artwork through commercial channels;
- exhibited in a professional gallery;
- held professional membership in a guild or association.

**Non-Professional:** Person who does not meet the above professional criteria.

### Display Guidelines

- Outside finished dimension of artwork including frame must be no greater than 36" and no less than 11" in any dimension.
- All work must be the original creation of the artist. No giclée prints or other reproductions of original art work, kits or copies of other artists' artwork.
- Artwork must be delivered ready for hanging—matted, mounted, framed and with screw eyes (no saw-tooth hangers), properly labeled on the back. Artwork should be protected where necessary with glass, plexiglas, mylar or other acetate.
- Plexiglas is suggested for pieces over 24" in any dimension to avoid possible damage.
- Artwork valued more than \$400.00 must have private insurance.
- If work is incorrectly categorized, it will be moved to the correct category.

### Registration & Drop Off

Completed registration form must be received in Mercer County Office on Aging by August 10. Artwork should be delivered to the Robinsville Senior Center on August 17 between 1:30 and 3:30 p.m. ready to hang. For more information, please call (609) 989-6661.

### Mercer County Senior Art Show Label Part 1

*Please securely affix to back of artwork.*

Artist's Name \_\_\_\_\_ Age \_\_\_\_\_

Address \_\_\_\_\_

City \_\_\_\_\_ Zip \_\_\_\_\_

Title of Work \_\_\_\_\_

Medium \_\_\_\_\_ Year completed \_\_\_\_\_

Size \_\_\_\_\_  Professional

H \_\_\_\_\_ W \_\_\_\_\_  NonProfessional

Value \$ \_\_\_\_\_  Available for Sale

\_\_\_\_\_  Not for Sale

Insurance Company for art valued over \$400. \_\_\_\_\_

### Mercer County Senior Art Show Label Part 2

*Retain for your records*

Title of Work \_\_\_\_\_

Medium \_\_\_\_\_ Year completed \_\_\_\_\_

Size \_\_\_\_\_  Professional

H \_\_\_\_\_ W \_\_\_\_\_  NonProfessional

Value \$ \_\_\_\_\_  Available for Sale

\_\_\_\_\_  Not for Sale

Insurance Company for art valued over \$400. \_\_\_\_\_

### Mercer County Senior Art Show Registration Form

Must be received by August 10: Mercer County Office on Aging, 640 South Broad Street, PO Box 8068, Trenton, NJ 08650.

Artist's Name \_\_\_\_\_ Age \_\_\_\_\_

Address \_\_\_\_\_

City \_\_\_\_\_ Zip \_\_\_\_\_

Phone \_\_\_\_\_ Cell \_\_\_\_\_

Email \_\_\_\_\_

Title of Work \_\_\_\_\_

Medium \_\_\_\_\_ Year completed \_\_\_\_\_

Size \_\_\_\_\_  Professional

H \_\_\_\_\_ W \_\_\_\_\_  NonProfessional

Value \$ \_\_\_\_\_  Available for Sale

\_\_\_\_\_  Not for Sale

Insurance Company for art valued over \$400. \_\_\_\_\_

### Waiver

While every attempt will be made to secure and protect each entry submitted, the sponsoring organizations will not assume responsibility for loss or damage incurred. Entry in the show signifies compliance with this waiver. No artwork may be removed prior to the closing reception. Only County Coordinator may remove artwork at that time. Artwork not included in the State show must be retrieved after reception on August 27.