



CORPORATE/EDUCATIONAL/HEALTH CARE CAMPUS REQUIREMENTS

Mercer County Wastewater Management Plan

1st Working Meeting

April 30, 2009



Opening Remarks:

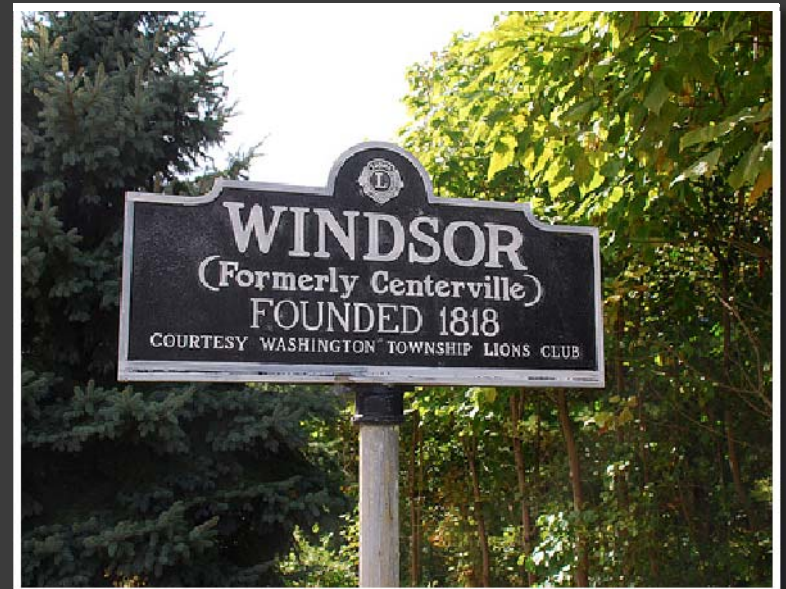
Donna M. Lewis, PP, AICP, Planning Director

Marisa Wieczorek, PP, AICP, Senior Planner

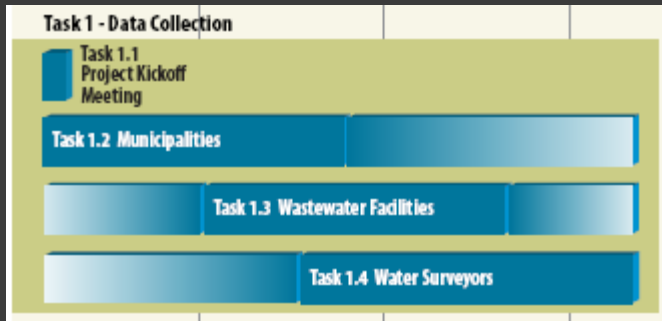
Status of Data Submittals

- Letter distributed to municipalities
April 13th
- Anticipate follow-up meetings with
GDP holders to be set up for data
exchange and clarification

Short time frame requires an aggressive
schedule.



Schedule



Project Kickoff Meeting

Feb 16th

Data Collection

Mid-June 2009

GIS Analysis

Begin July 2009

WMP Draft

Mid Sept 2009

WMP Final

Mid Nov 2009

Present Draft to Freeholders

Mid Oct 2009

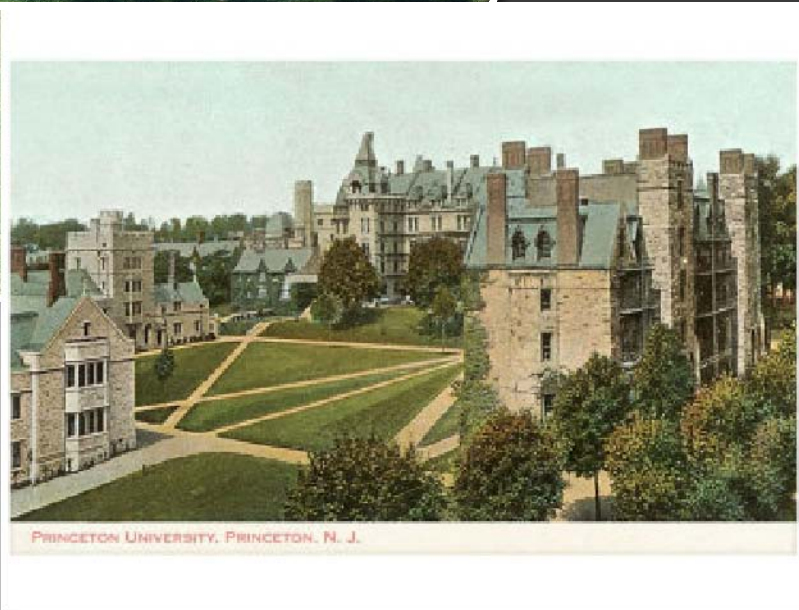
Final WMP Delivered to Mercer County

End Nov 2009

County has obligation as responsible agency for WMP's

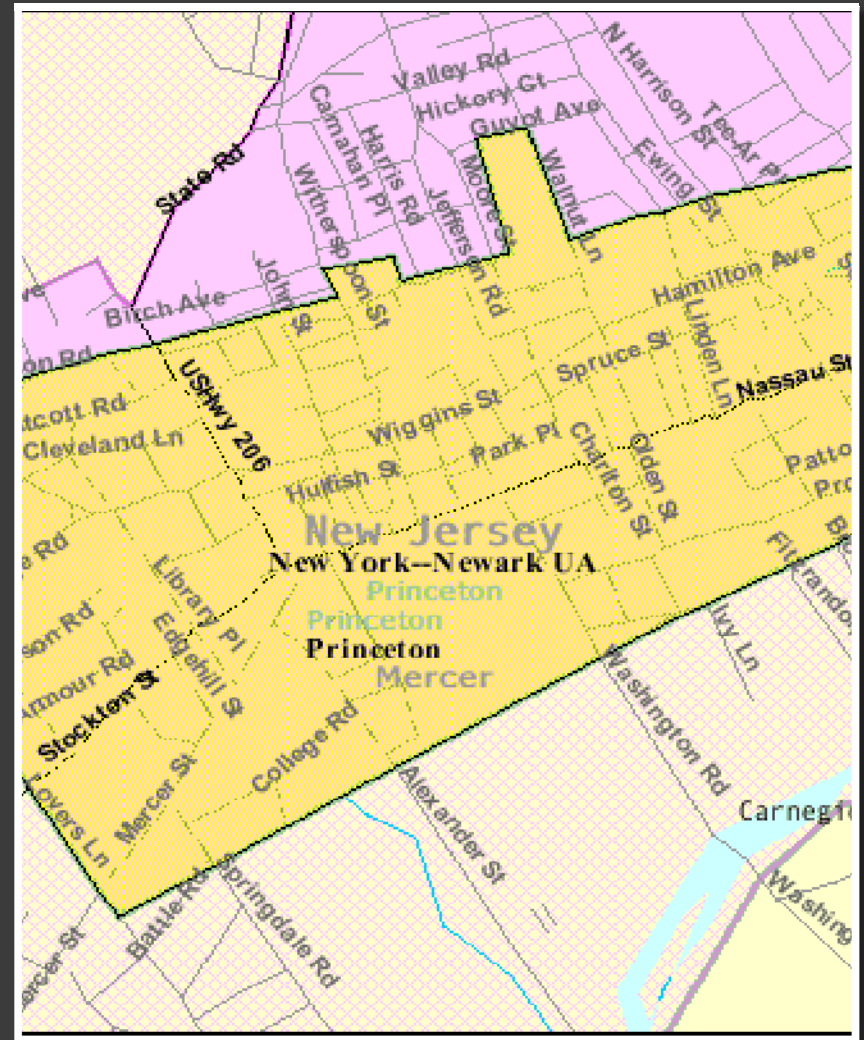
County understands:

- a. Campuses may expand
- b. Develop more densely
- c. Change master plans in the future
- d. General development plans (GDP's) are not specified in the rules



Relevant Information #1

Any agreements or Planning Board Approvals allowing additional flow to existing sewers



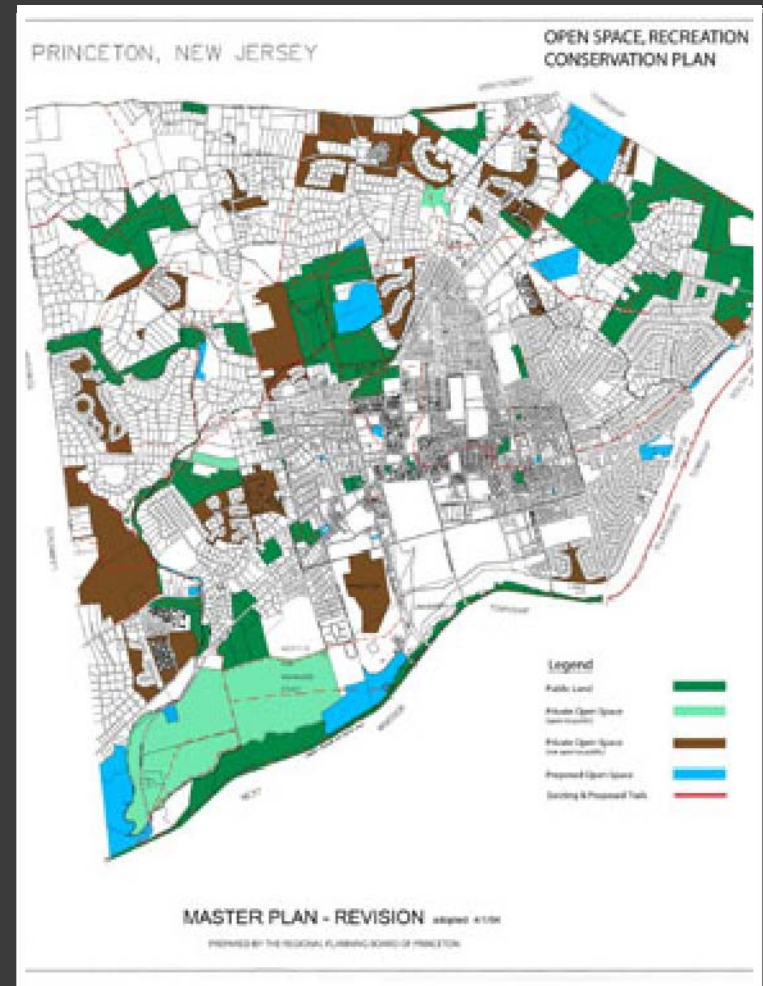


Relevant Information #2

Maps showing existing conditions of a GD area including connections to the sewer collection system and water supply system.

Relevant Information #3

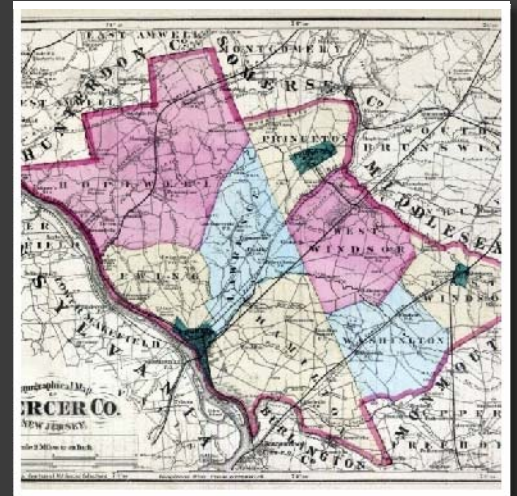
Maps showing possible future conditions of a GD area including possible connections to the sewer collection system and water supply system.





Relevant Information #4

Documents that explain plans for expansion (or downsizing) of a GD area.



MUNICIPAL DATA REQUIREMENTS



Water Quality Management Rules require: #1

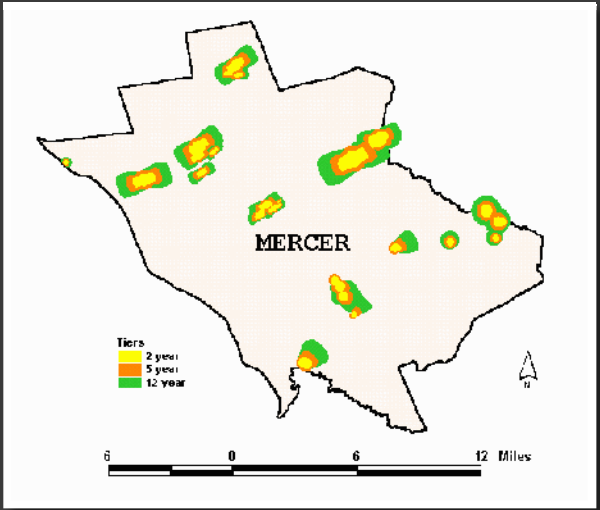
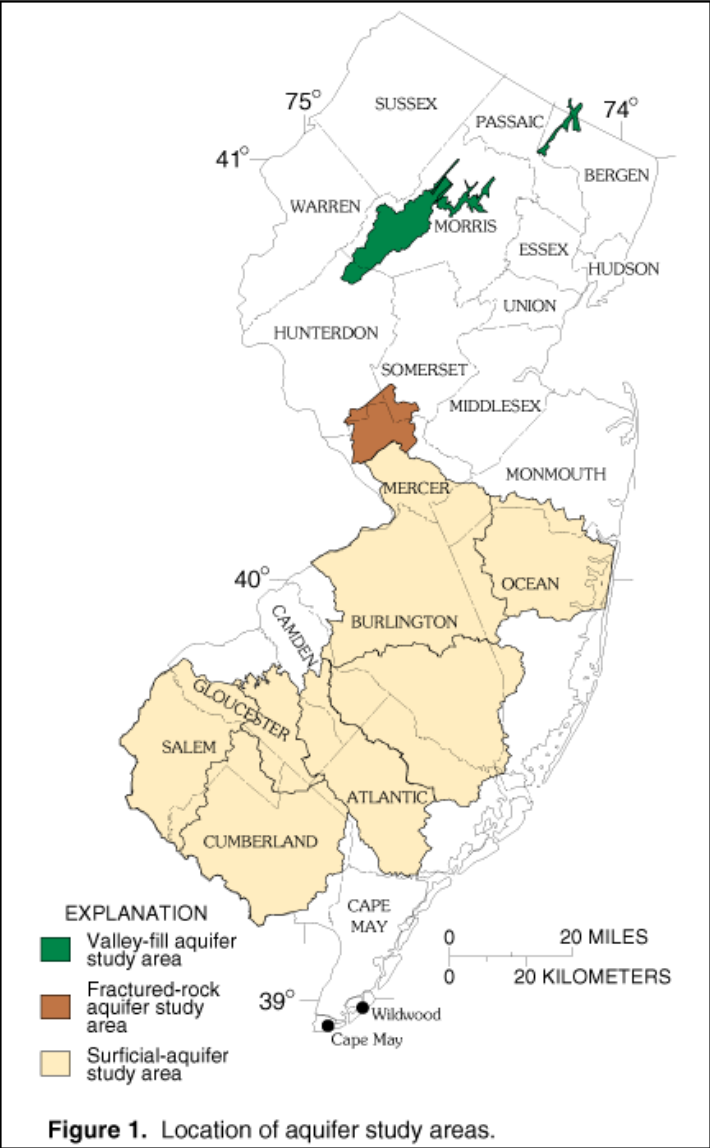
Ordinances to demonstrate compliance with
N.J.A.C. 7:15-5.25(f)2iii:

- a. Ground Water Recharge Maintenance
- b. Riparian Zone Protection
- c. Steep Slope Protection
- d. Municipal Stormwater Ordinances

Having Ordinances in place helps demonstrate
compliance with the environmental objectives of
the constraints analysis

Water Quality Management Rules require: #2

Map identifying public water supply service areas



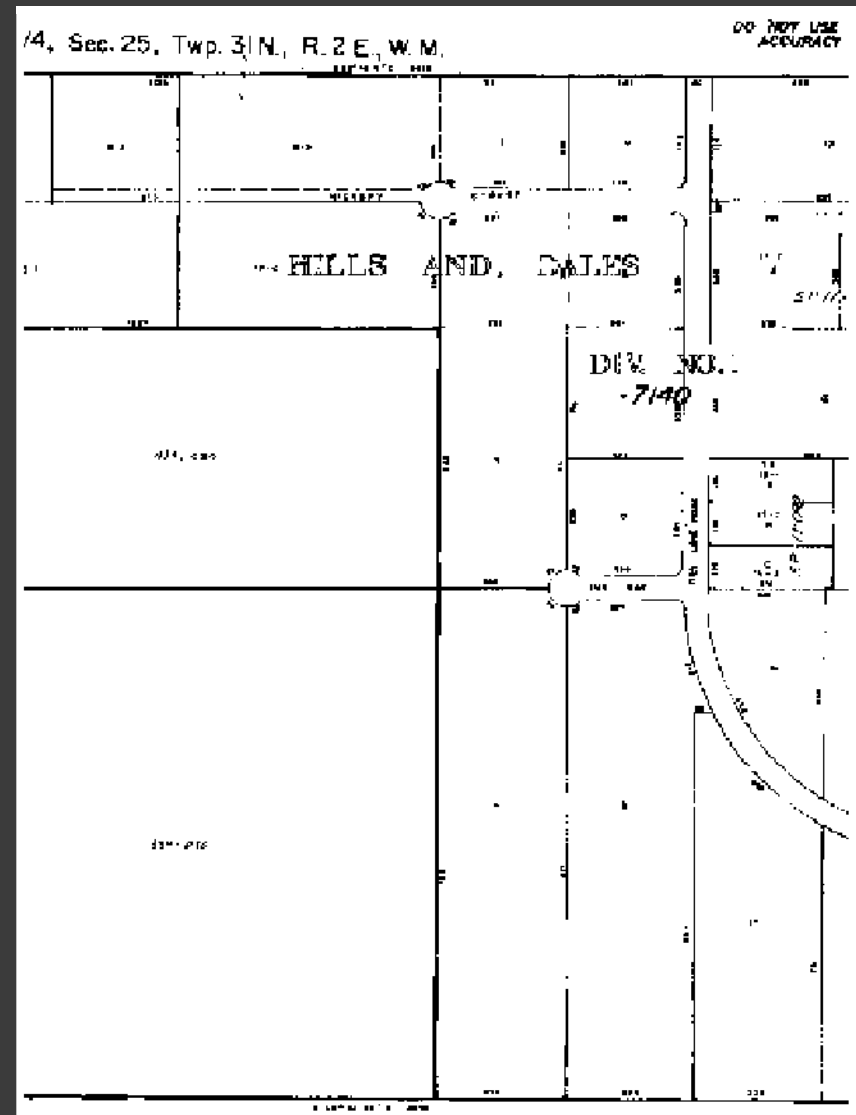
Well Head Protection Zones

Water Quality Management Rules require:

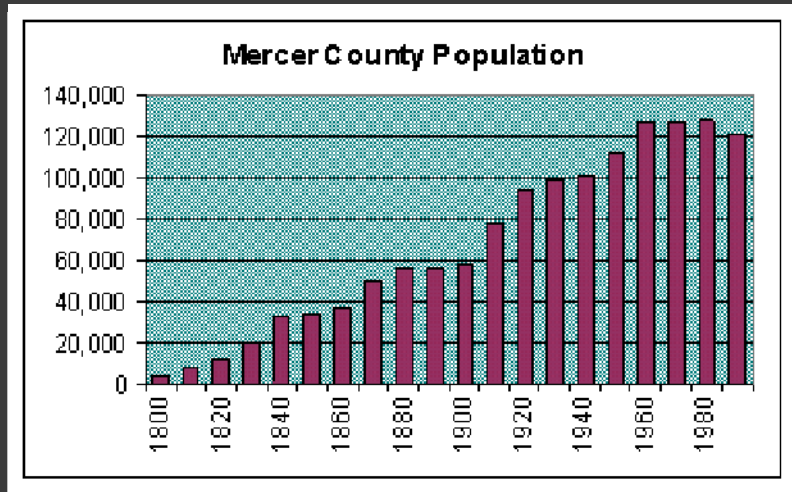
#3

Where applicable, a septic management plan that may include the following ordinances:

- a. Septic System Maintenance
- b. Septic System Development in Sewer Service Areas
- c. Dry Conveyances in Sewer Service Areas



Water Quality Management Rules require: #4



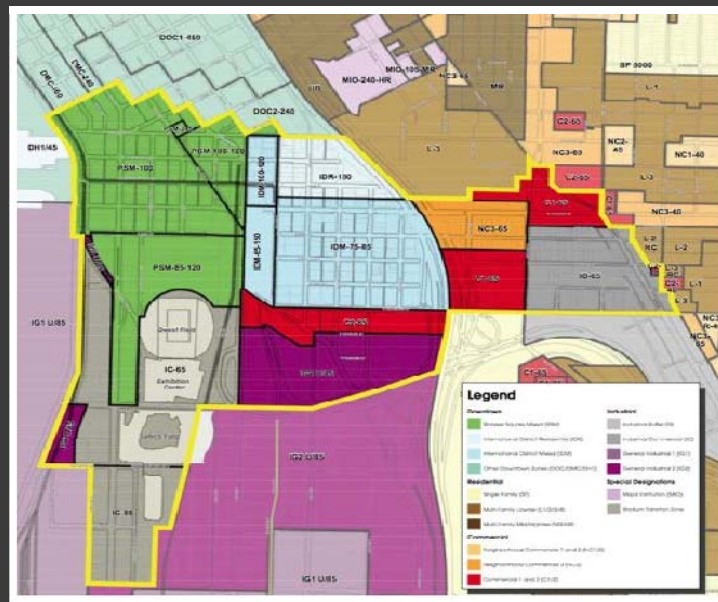
Urbanized municipalities must provide:

- a. Population projections (20 year forecast)
- b. Employment projections

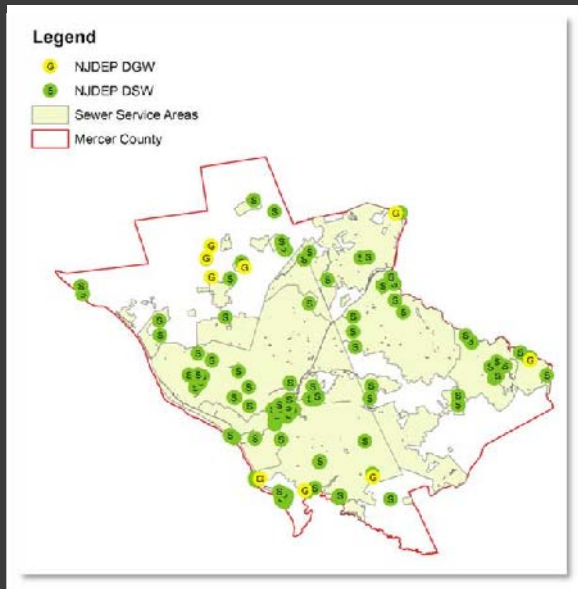
Water Quality Management Rules require: #5

Municipalities not subject to or defined as urban (#4) must provide:

- Current zoning map and associated ordinances
- Modified zoning map and associated ordinances as revised to demonstrate compliance with N.J.A.C. 7:15-5.25, as applicable



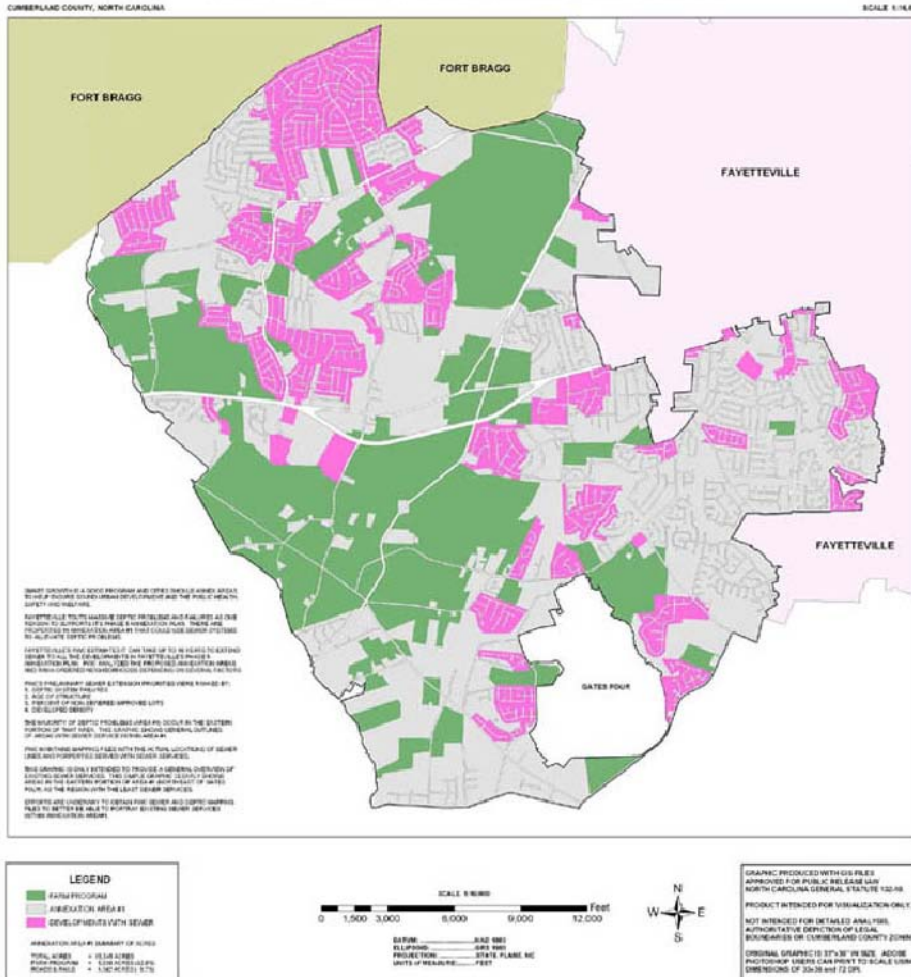
Water Quality Management Rules also require:



Sewer-related information:

1. Identify committed flow not presently connected to each Domestic Treatment Works (DTW) for each municipality within the sewer service area.
2. Maps showing the facility name, NJPDES discharge permit number and existing collection and conveyance systems.
3. Maps showing location of various treatment works and surface or ground water discharges.

ANNEXATION AREA #1 SEWER SERVICES



Geographic Information System (GIS)

Most of the WMP analysis will be done on GIS. Ideally, municipal submittals would be on ESRI Shape files or AutoCAD.dwg files.

Please complete the questionnaire that was included with the letter you received.

Countywide Parcel Base Data



Undertaking update of county-wide parcel base map.

Complete the questionnaire that was included with the April 13th letter.

Why?

- Critical base layer
- Used for a variety of applications
- Broad user population
- Spatial and attribute aspects need to be accurate



QUESTIONS?