



# SEWERAGE AUTHORITY DATA REQUIREMENTS

Mercer County Wastewater Management Plan

1<sup>st</sup> Working Meeting

April 30, 2009

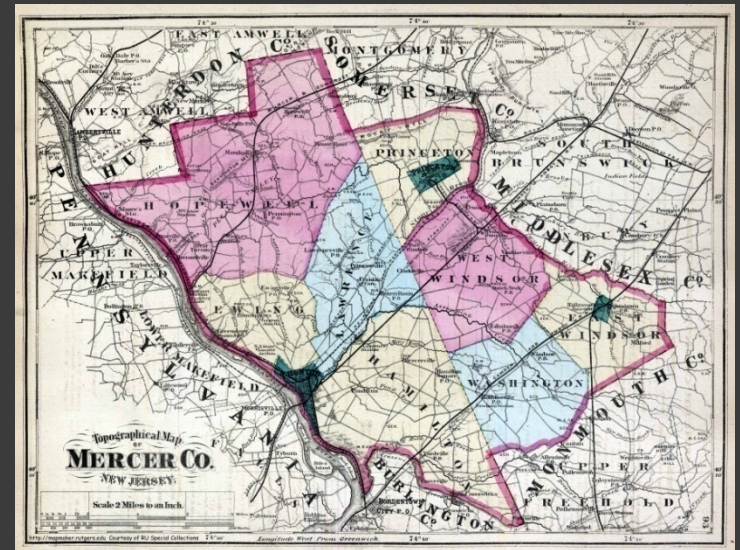
# AGENDA

Introductions and Meeting Purpose

Review WMP Data Requirements and Needs

Review Countywide Parcel Base Data Activity

Questions?





# Opening Remarks:

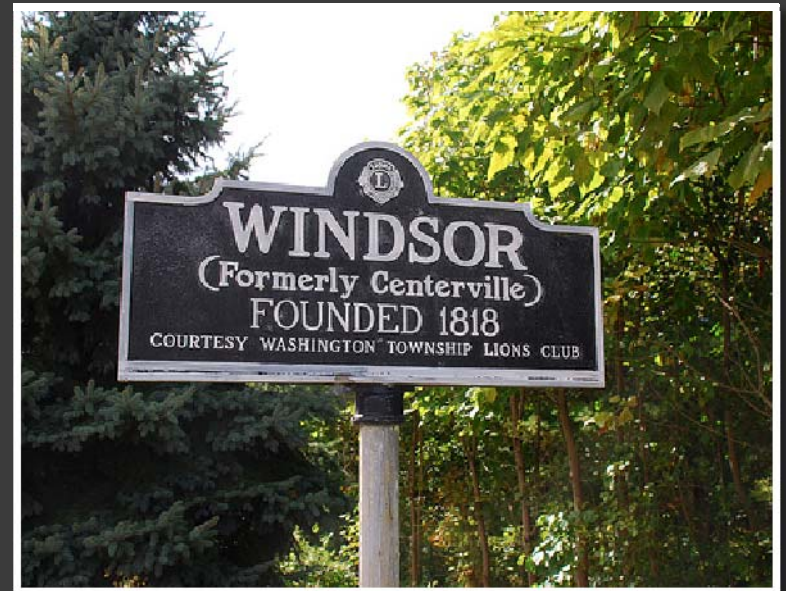
Donna M. Lewis, PP, AICP, Planning Director

Marisa Wieczorek, PP, AICP, Senior Planner

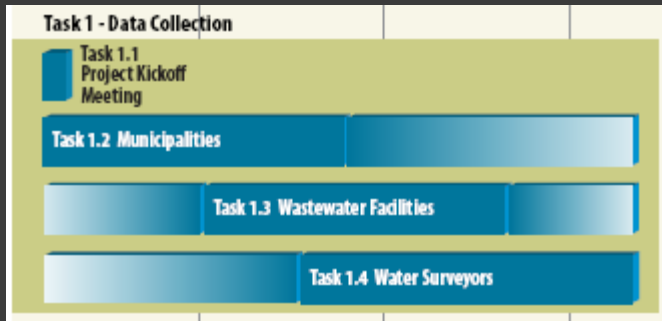
# Status of Data Submittals

- Letter distributed to municipalities  
April 13<sup>th</sup>
- Anticipate follow-up meetings for each treatment plant to be set up for data exchange and clarification

Short time frame requires an aggressive schedule.



# Schedule



Project Kickoff Meeting

Feb 16th

Data Collection

Mid-June 2009

GIS Analysis

Begin July 2009

WMP Draft

Mid Sept 2009

WMP Final

Mid Nov 2009

Present Draft to Freeholders

Mid Oct 2009

Final WMP Delivered to Mercer County

End Nov 2009

# Water Quality Management Rules require: #1



Sewerage Authorities and Sewerage Municipalities are to provide sewer-related information:

The name and NJPDES discharge permit number of any Domestic Treatment Works (DTW) owned or operated by an entity located in at least part of the County.



## Water Quality Management Rules require: #2

The existing permitted flow of  
each named DTW.

# Water Quality Management Rules require: #3

Actual Wastewater flow, by municipality, for each municipality in the sewer service area of each named DTW.

Include:

1. Average daily flow for the time period Jan/2008 – Dec/2008. Break out flow by residential, commercial, industrial and I&I by municipality.
2. Provide DMR's for the same period.



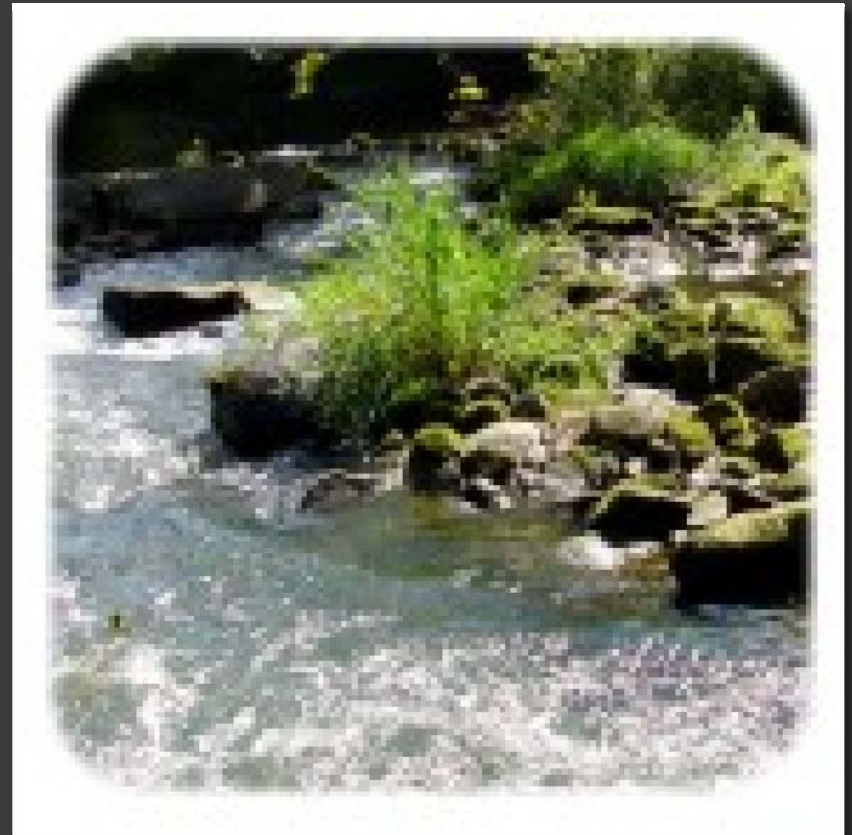


## Water Quality Management Rules require: #4

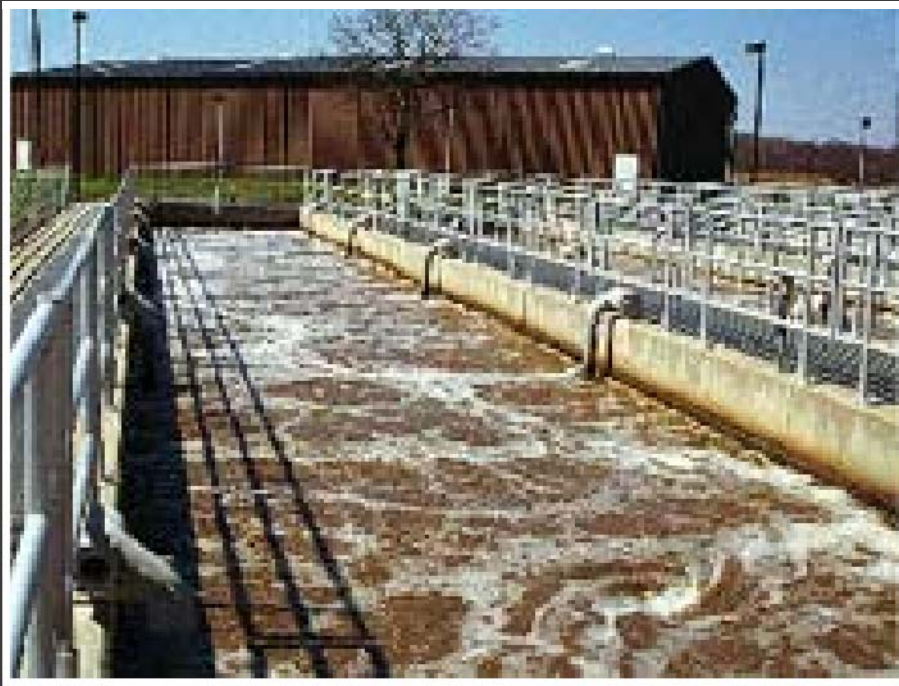
Capacity allocation of each  
municipality within the sewer  
service area of each named  
DTW

# Water Quality Management Rules require: #5

Description of the legal or financial arrangement concerning the capacity allocation.



# Water Quality Management Rules require: #6



Identify committed flow not presently connected to each named DTW for each municipality within the sewer service area. Committed flow is calculated for each municipality by adding:

Flow of Approved TWA's +  
average wastewater flow



Water Quality  
Management  
Rules require:  
#7

Any relevant information on a future DTW  
expansion

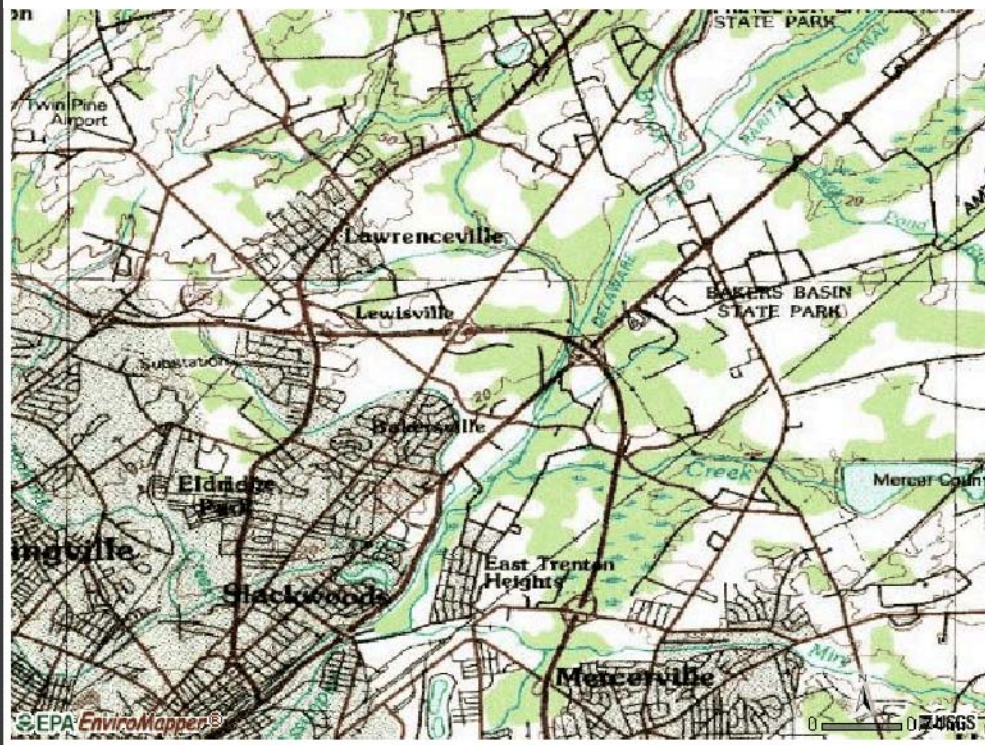
# Water Quality Management Rules require: #8



Identify any wasteload allocation  
including:

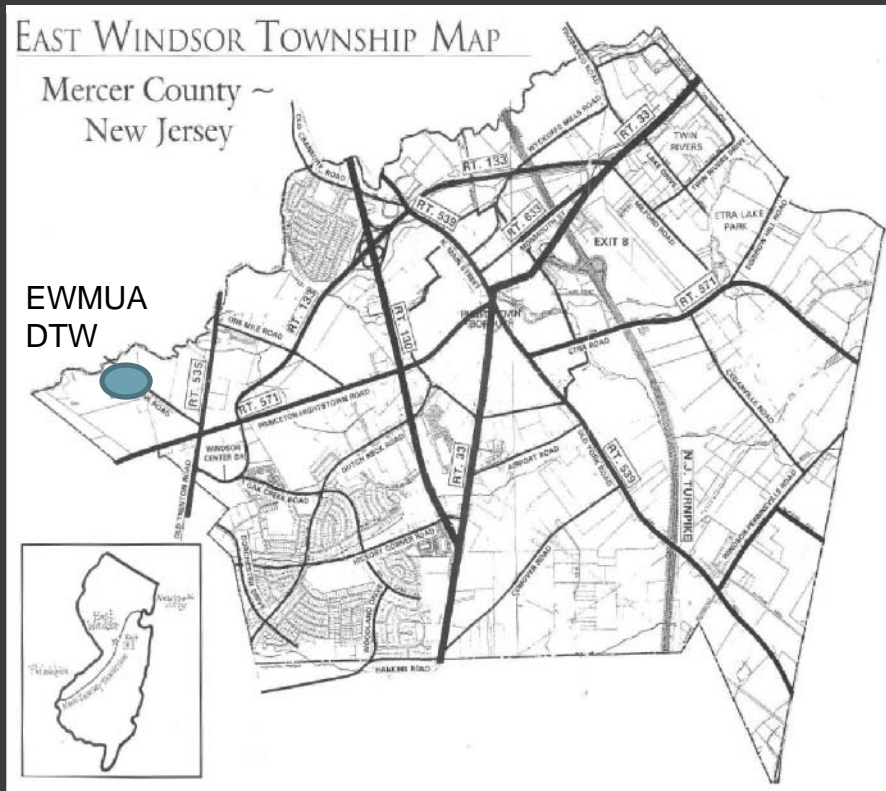
- Total maximum daily load (TMDL)
- Assigned to a named DTW
- Proposed schedule to meet any non-compliance

# Water Quality Management Rules require: #9



- Maps of any named DTW showing:
- Name
  - NJPDES permit number
  - Existing collection and conveyance systems

# Water Quality Management Rules require: #10

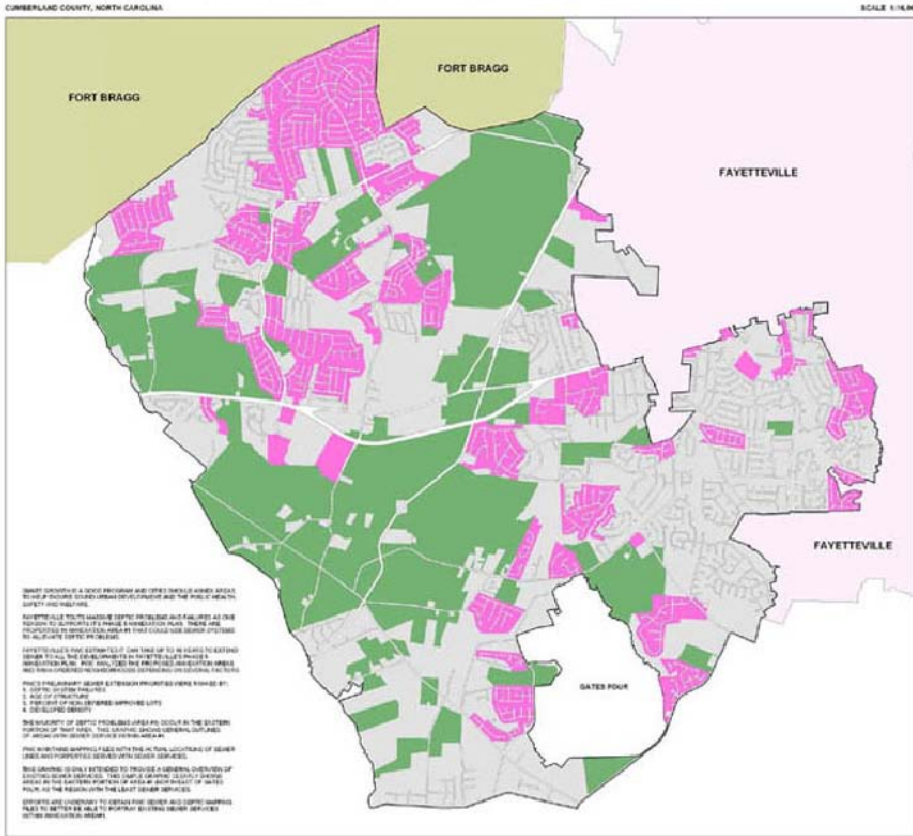


Submit information in accordance with N.J.A.C. 7:15-5.16 to assist County in creating maps showing:

- Various treatment works
- Surface or groundwater discharges

# ANNEXATION AREA #1 SEWER SERVICES

SCALE 1"=10,000'



WATER SERVICE IS A SEWER PROGRAM AND OTHER SPECIAL AREAS ARE NOT INCLUDED IN THIS SEWER SERVICE AREA. THE PUBLIC HEALTH DEPARTMENT HAS BEEN ADVISED OF THIS PROGRAM AND THE PUBLIC HEALTH DEPARTMENT HAS BEEN ADVISED OF THIS PROGRAM AND THE PUBLIC HEALTH DEPARTMENT HAS BEEN ADVISED OF THIS PROGRAM.

CONSTRUCTION OF SEWER SERVICE IS SUBJECT TO THE FOLLOWING CONDITIONS:

1. THE SEWER SERVICE IS SUBJECT TO THE FOLLOWING CONDITIONS:
2. THE SEWER SERVICE IS SUBJECT TO THE FOLLOWING CONDITIONS:
3. THE SEWER SERVICE IS SUBJECT TO THE FOLLOWING CONDITIONS:
4. THE SEWER SERVICE IS SUBJECT TO THE FOLLOWING CONDITIONS:

THE SEWER SERVICE IS SUBJECT TO THE FOLLOWING CONDITIONS:

1. THE SEWER SERVICE IS SUBJECT TO THE FOLLOWING CONDITIONS:
2. THE SEWER SERVICE IS SUBJECT TO THE FOLLOWING CONDITIONS:
3. THE SEWER SERVICE IS SUBJECT TO THE FOLLOWING CONDITIONS:
4. THE SEWER SERVICE IS SUBJECT TO THE FOLLOWING CONDITIONS:

**LEGEND**

- WATER PROGRAM
- ANNEXATION AREA #1
- DEVELOPMENT WITH SEWER

ANNEXATION AREA #1 BOUNDARY OF WATERS

- WATER MAINS
- SEWER MAINS
- SEWER SERVICE AREA
- SEWER SERVICE AREA
- SEWER SERVICE AREA



GRAPHIC PRODUCED WITH GIS FILES APPROVED FOR PUBLIC RELEASE BY NORTH CAROLINA GENERAL STATUTE 132-108

PRODUCT INTENDED FOR SIMULATION ONLY. NOT INTENDED FOR DETAILED ANALYSIS. AUTHORITY: NORTH CAROLINA GENERAL STATUTE 132-108. BOUNDARIES OF CURRAN COUNTY ZONES.

ORIGINAL GRAPHIC: 17" x 22" IN SIZE. ASCII PHOTOGRAPHY: 17" x 22" IN SIZE. ASCII PHOTOGRAPHY: 17" x 22" IN SIZE. ASCII PHOTOGRAPHY: 17" x 22" IN SIZE.

# Geographic Information System (GIS)

Most of the WMP analysis will be done on GIS. Ideally, sewerage authority submittals would be on ESRI Shape files or AutoCAD.dwg files.

QUESTIONS?