

APPENDIX C

Coastal Zone Management

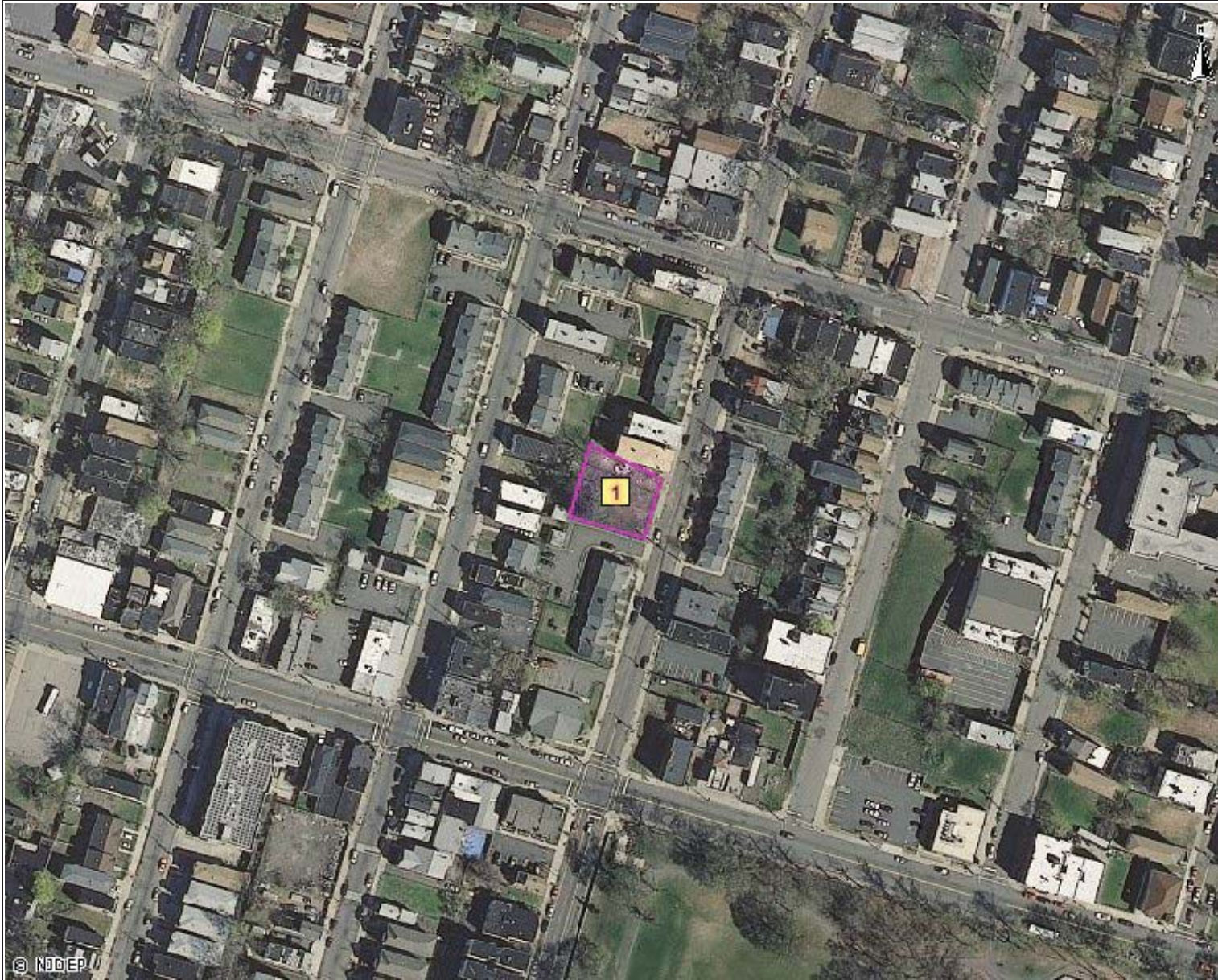
0714_335_15_CoastalZoneManagementAct

The screenshot shows the ArcGIS Explorer Online interface. The main map displays an aerial view of a residential area with a red square highlighting a specific parcel. On the left, the 'Map Legend' is open, showing three categories: 'Hackensack Meadowlands' (green), 'CAFRA Zone' (light blue), and 'Upland Waterfront Development Zone' (orange). On the right, the 'Query Results' window is open, displaying a table with one row of data for the highlighted parcel.

Field Name	Value
0714_335_15	1 of 1
WQ_V	WU
NFIP	Yes
FLD_WAY	No
SOURCE	N/A
WETLANDS	No
HMDC	No
CAFRA	No
UWB_BUF	No
UWDZ	No
TE_ANIM	No
HAZ_SITE	Yes
LAKEH_RUN	No
CONF_FLU	200_4500600

At the bottom of the browser window, the status bar shows 'Done' on the left and 'Internet | Protected Mode: On' on the right, along with a 100% zoom level.

NEP0011_EA_CoastalZoneManagementMap



Legend
Environmental Data
CAFRA
Natural2012

© NDDP

Map Printed On {2014-01-02 14:58}

0 ————— 0.031 mi

Selections

1 Municipal Code: 0714, Block: 335, Lot: 15, Qualifier:

