

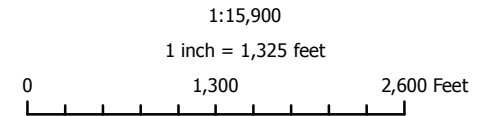
NJDEP HUD Environmental Review Tool

New Jersey Dept of Environmental Protection - HUD Environmental Review Tool
Overview Map Municipality: Carlstadt Boro



Service Layer Credits: Source: Esri, DigitalGlobe, GeoEye, i-cubed, Earthstar Geographics, CNES/Airbus DS, USDA, USGS, AEX, Getmapping, Aerogrid, IGN, IGP, swisstopo, and the GIS User Community
Esri, HERE, DeLorme, MapmyIndia, © OpenStreetMap contributors
National Geographic, Esri, DeLorme, HERE, UNEP-WCMC, USGS, NASA, ESA, METI, NRCAN, GEBCO, NOAA, increment P Corp.
Esri, HERE, DeLorme, TomTom, MapmyIndia, © OpenStreetMap contributors, and the GIS user community

- Proposed Action Site
- HUD Review Parcels
- All areas are prime farmland
- Farmland of statewide importance
- Farmland of unique importance



NJDEP HUD Environmental Review Tool

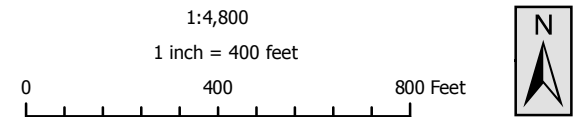
New Jersey Dept of Environmental Protection - HUD Environmental Review Tool
Prime Farmland Soils

Application ID#: NCR40029a
PAMS PIN:
Address: Kero Road
Municipality: Carlstadt Boro



Source: Esri, DigitalGlobe, GeoEye, i-cubed, Earthstar Geographics, CNES/Airbus DS, USDA, USGS, AEX, Getmapping, Aerogrid, IGN, IGP, swisstopo, and the GIS User Community, Esri, HERE, DeLorme, MapmyIndia, © OpenStreetMap contributors, Esri, HERE, DeLorme, TomTom, MapmyIndia, © OpenStreetMap contributors, and the GIS user community

- Proposed Action Site
- HUD Review Parcels
- All areas are prime farmland
- Farmland of statewide importance
- Farmland of unique importance



NJDEP HUD Environmental Review Tool

New Jersey Dept of Environmental Protection - HUD Environmental Review Tool
 Prime Farmland Soils

Application ID#:

NCR40029b

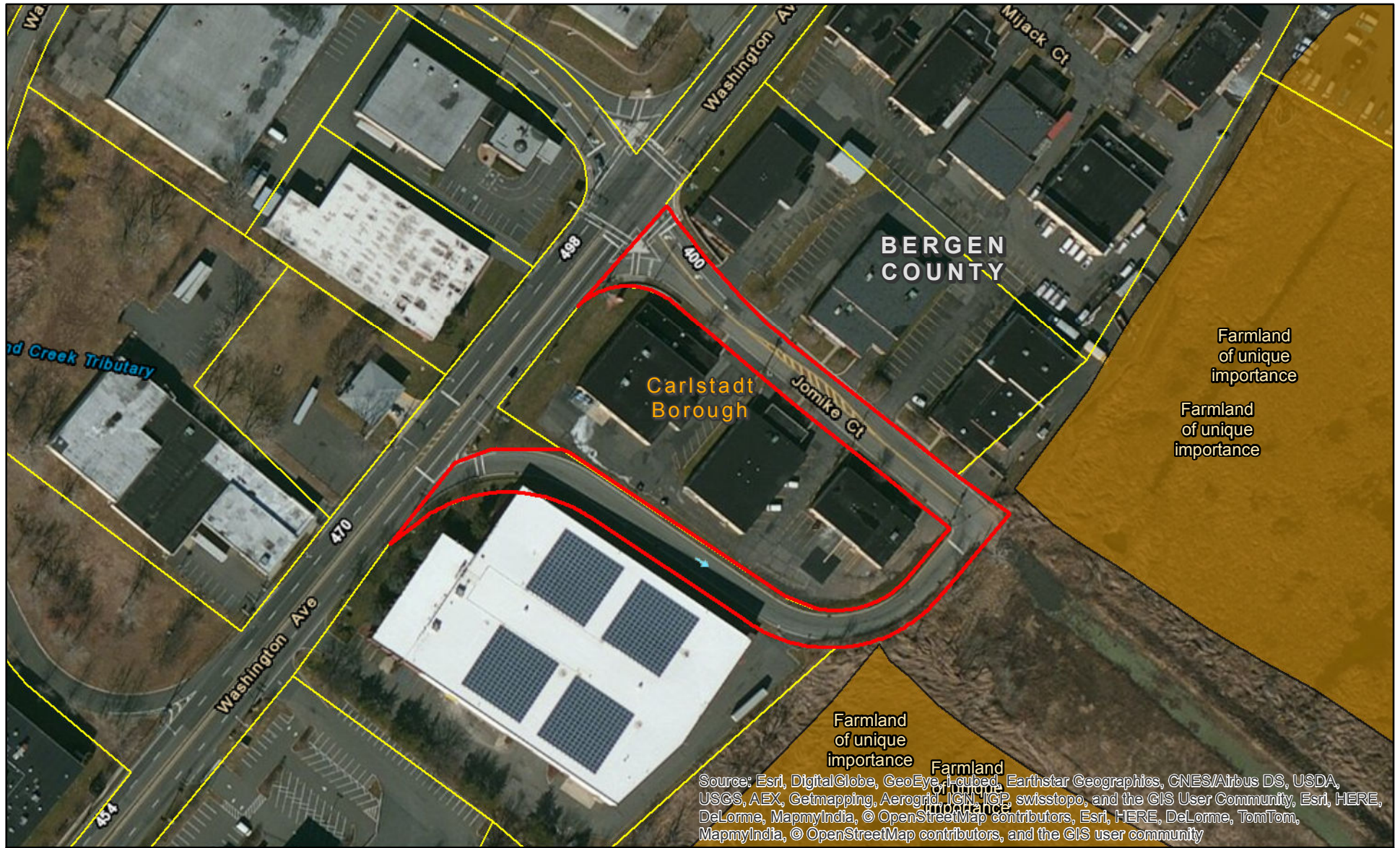
PAMS PIN:

Address:

Jomike Court

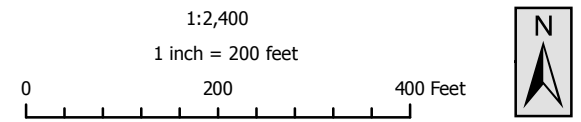
Municipality:

Carlstadt Boro



Source: Esri, DigitalGlobe, GeoEye, Earthstar Geographics, CNES/Airbus DS, USDA, USGS, AEX, Getmapping, Aerogrid, IGN, IGP, swisstopo, and the GIS User Community, Esri, HERE, DeLorme, MapmyIndia, © OpenStreetMap contributors, Esri, HERE, DeLorme, TomTom, MapmyIndia, © OpenStreetMap contributors, and the GIS user community

- Proposed Action Site
- HUD Review Parcels
- All areas are prime farmland
- Farmland of statewide importance
- Farmland of unique importance



NJDEP HUD Environmental Review Tool

New Jersey Dept of Environmental Protection - HUD Environmental Review Tool
Prime Farmland Soils

Application ID#:

NCR40029c

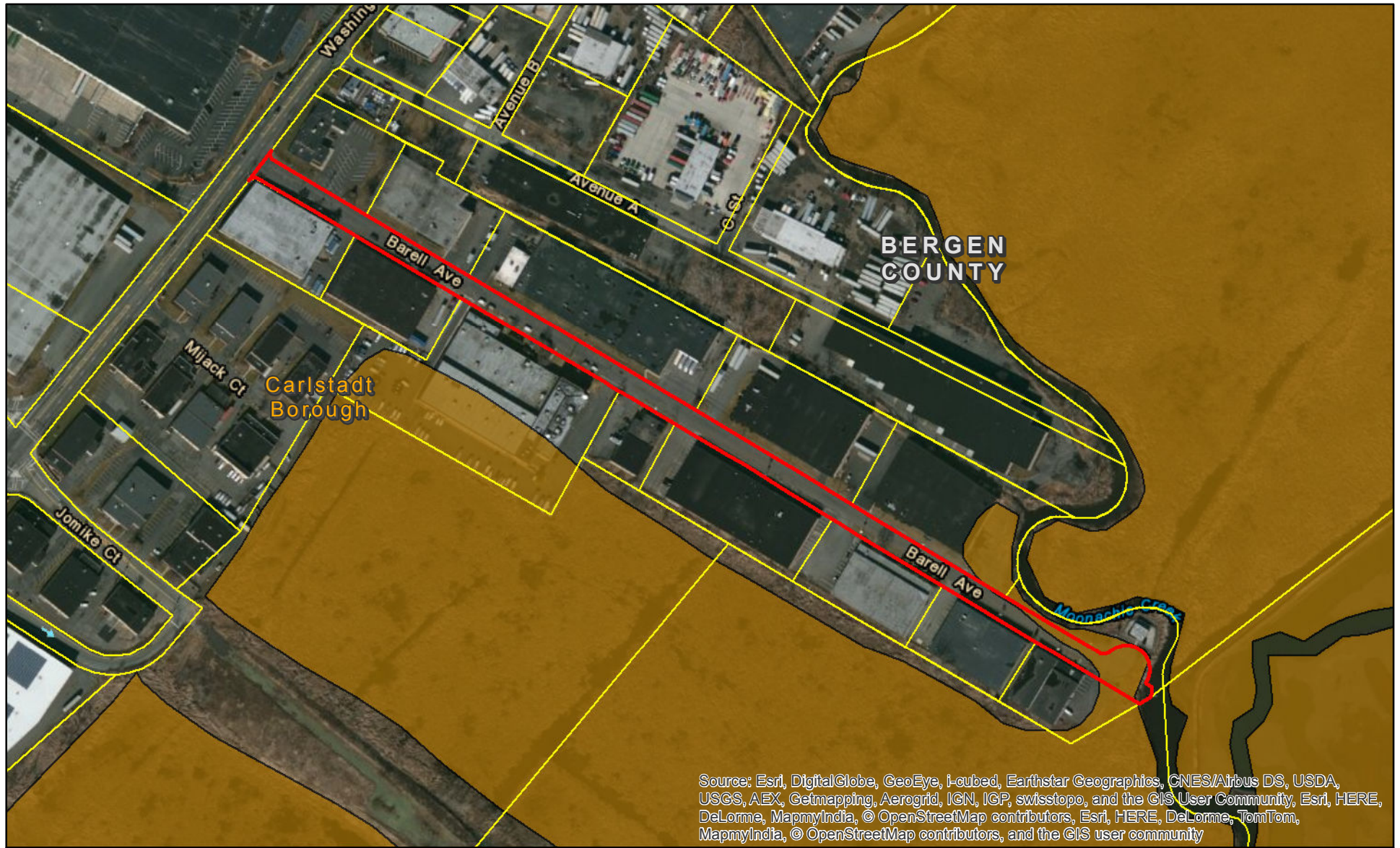
PAMS PIN:

Address:

Barell Avenue

Municipality:

Carlstadt Boro



Source: Esri, DigitalGlobe, GeoEye, i-cubed, Earthstar Geographics, CNES/Airbus DS, USDA, USGS, AEX, Getmapping, Aerogrid, IGN, IGP, swisstopo, and the GIS User Community, Esri, HERE, DeLorme, MapmyIndia, © OpenStreetMap contributors, Esri, HERE, DeLorme, TomTom, MapmyIndia, © OpenStreetMap contributors, and the GIS user community

Proposed Action Site

HUD Review Parcels

All areas are prime farmland

Farmland of statewide importance

Farmland of unique importance

1:4,800

1 inch = 400 feet

0 400 800 Feet



NJDEP HUD Environmental Review Tool

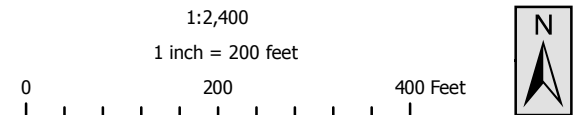
New Jersey Dept of Environmental Protection - HUD Environmental Review Tool
Prime Farmland Soils

Application ID#: NCR40029d
PAMS PIN:
Address: Eastern Way
Municipality: Carlstadt Boro



Source: Esri, DigitalGlobe, GeoEye, I-cubed, Earthstar Geographics, CNES/Airbus DS, USDA, USGS, AEX, Getmapping, Aerogrid, IGN, IGP, swisstopo, and the GIS User Community, Esri, HERE, DeLorme, MapmyIndia, © OpenStreetMap contributors, Esri, HERE, DeLorme, TomTom, MapmyIndia, © OpenStreetMap contributors, and the GIS user community

- Proposed Action Site
- HUD Review Parcels
- All areas are prime farmland
- Farmland of statewide importance
- Farmland of unique importance



NJDEP HUD Environmental Review Tool

New Jersey Dept of Environmental Protection - HUD Environmental Review Tool
Prime Farmland Soils

Application ID#: NCR40029e
PAMS PIN:
Address: Starke Road
Municipality: Carlstadt Boro



Proposed Action Site	All areas are prime farmland
HUD Review Parcels	Farmland of statewide importance
	Farmland of unique importance

1:9,600
1 inch = 800 feet

0 750 1,500 Feet

NJDEP HUD Environmental Review Tool

New Jersey Dept of Environmental Protection - HUD Environmental Review Tool
Prime Farmland Soils

Application ID#:

NCR40029f

PAMS PIN:

Address:

455 16th Street


Municipality:


Carlstadt Boro




 Proposed Action Site

 HUD Review Parcels

 All areas are prime farmland

 Farmland of statewide importance

 Farmland of unique importance

1:4,800

1 inch = 400 feet

0 400 800 Feet

