

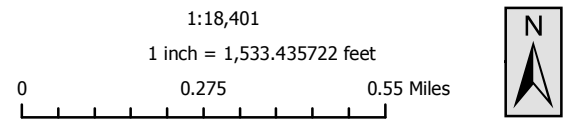
# NJDEP HUD Environmental Review Tool

New Jersey Dept of Environmental Protection - HUD Environmental Review Tool  
Hazardous Sites of Concern

Application ID#: NCR40029a  
PAMS PIN:  
Address: Kero Road  
Municipality: Carlstadt Boro



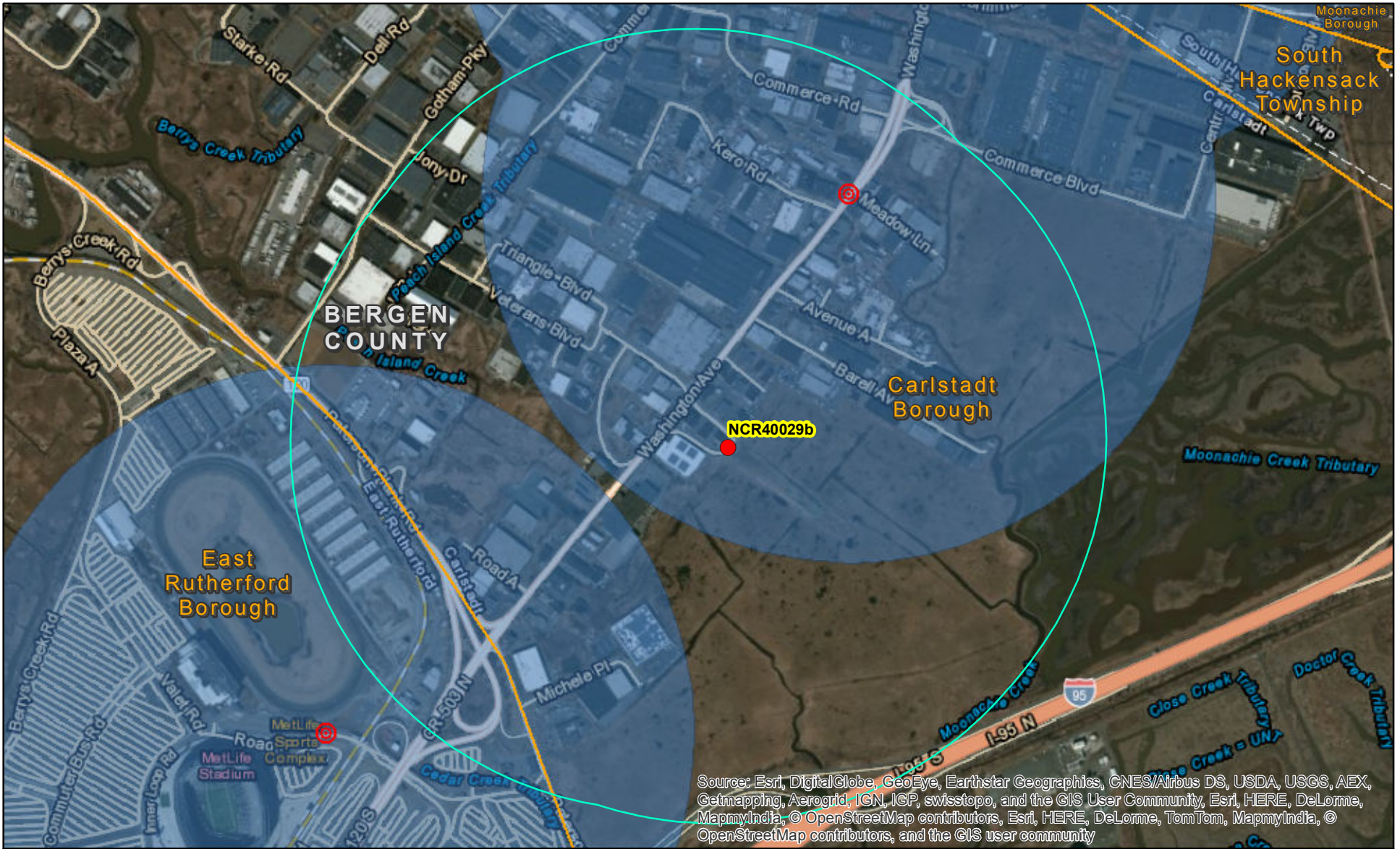
- Proposed Action Site
- Hazardous Sites Buffer Zone (3000 ft)
- Proposed Action Site 3000 ft Buffer
- ⊙ Hazardous Site of Concern



# NJDEP HUD Environmental Review Tool

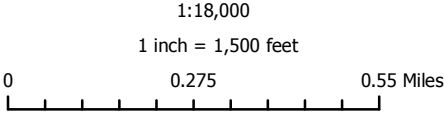
New Jersey Dept of Environmental Protection - HUD Environmental Review Tool  
Hazardous Sites of Concern

Application ID#: NCR40029b  
PAMS PIN:  
Address: Jomike Court  
Municipality: Carlstadt Boro



Source: Esri, DigitalGlobe, GeoEye, Earthstar Geographics, CNES/Airbus DS, USDA, USGS, AEX, Getmapping, Aerogrid, IGN, IGP, swisstopo, and the GIS User Community, Esri, HERE, DeLorme, MapmyIndia, © OpenStreetMap contributors, Esri, HERE, DeLorme, TomTom, MapmyIndia, © OpenStreetMap contributors, and the GIS user community

- Proposed Action Site
- Hazardous Sites Buffer Zone (3000 ft)
- Proposed Action Site 3000 ft Buffer
- ⊙ Hazardous Site of Concern



# NJDEP HUD Environmental Review Tool

New Jersey Dept of Environmental Protection - HUD Environmental Review Tool  
Hazardous Sites of Concern

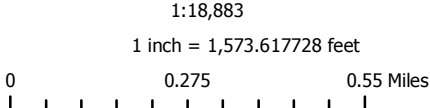
Application ID#: NCR40029c  
PAMS PIN:  
Address: Barell Avenue  
Municipality: Carlstadt Boro



Source: Esri, DigitalGlobe, GeoEye, Earthstar Geographics, CNES/Airbus DS, USDA, USGS, AEX, Getmapping, Aerogrid, IGN, IGP, swisstopo, and the GIS User Community, Esri, HERE, DeLorme, MapmyIndia, © OpenStreetMap contributors, Esri, HERE, DeLorme, TomTom, MapmyIndia, © OpenStreetMap contributors, and the GIS user community

- Proposed Action Site
- Proposed Action Site 3000 ft Buffer
- ⊙ Hazardous Site of Concern

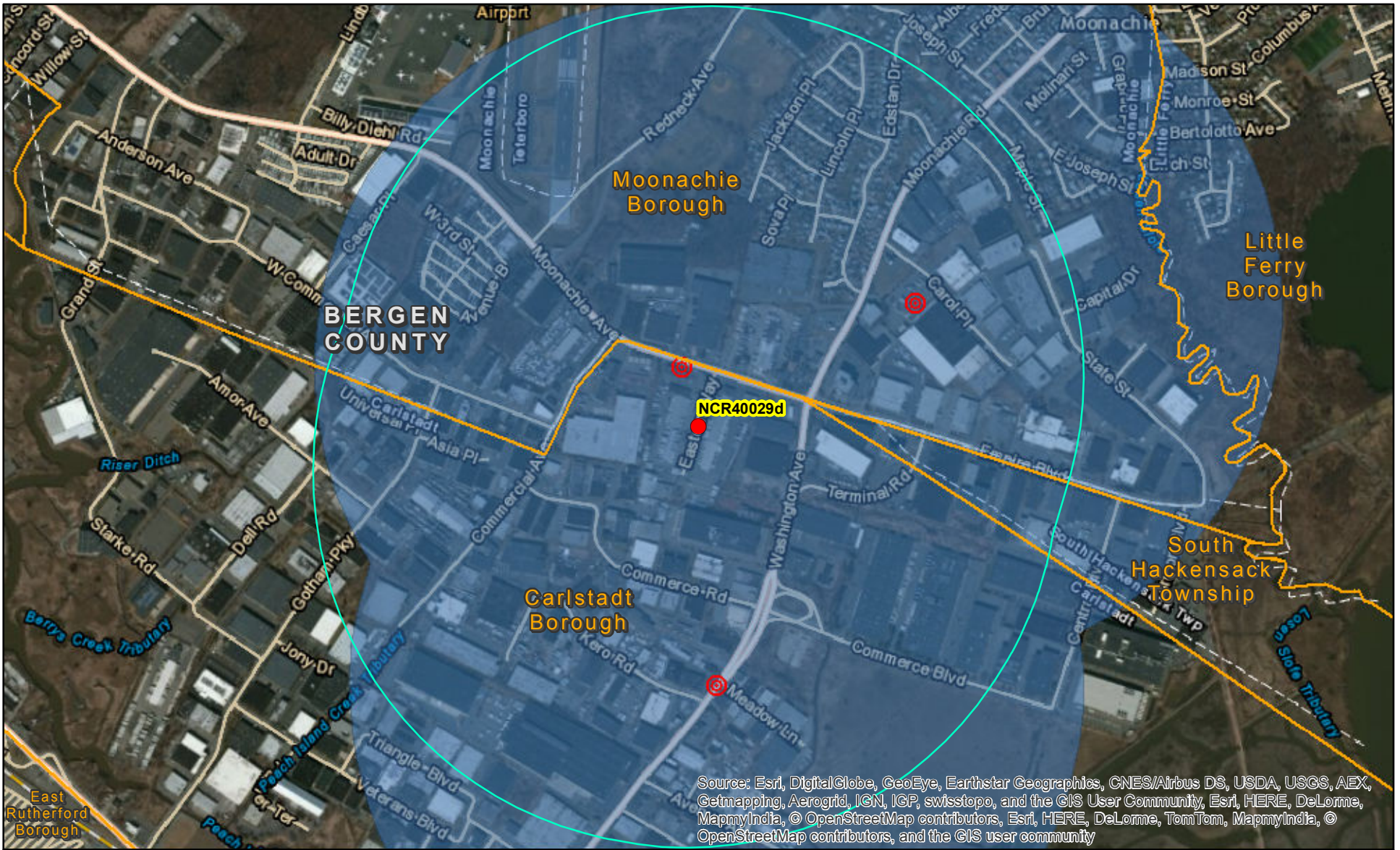
■ Hazardous Sites Buffer Zone (3000 ft)



# NJDEP HUD Environmental Review Tool

New Jersey Dept of Environmental Protection - HUD Environmental Review Tool  
Hazardous Sites of Concern

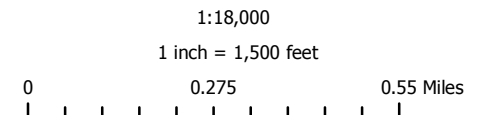
Application ID#: NCR40029d  
PAMS PIN:  
Address: Eastern Way  
Municipality: Carlstadt Boro



Source: Esri, DigitalGlobe, GeoEye, Earthstar Geographics, CNES/Airbus DS, USDA, USGS, AEX, Getmapping, Aerogrid, IGN, IGP, swisstopo, and the GIS User Community, Esri, HERE, DeLorme, MapmyIndia, © OpenStreetMap contributors, Esri, HERE, DeLorme, TomTom, MapmyIndia, © OpenStreetMap contributors, and the GIS user community

- Proposed Action Site
- Proposed Action Site 3000 ft Buffer
- ⊙ Hazardous Site of Concern

■ Hazardous Sites Buffer Zone (3000 ft)



# NJDEP HUD Environmental Review Tool

New Jersey Dept of Environmental Protection - HUD Environmental Review Tool  
Hazardous Sites of Concern

Application ID#:

NCR40029e

PAMS PIN:

Address:

Starke Road

Municipality:

Carlstadt Boro



Source: Esri, DigitalGlobe, GeoEye, Earthstar Geographics, CNES/Airbus DS, USDA, USGS, AEX, Getmapping, Aerogrid, IGN, IGP, swisstopo, and the GIS User Community, Esri, HERE, DeLorme, MapmyIndia, © OpenStreetMap contributors, Esri, HERE, DeLorme, TomTom, MapmyIndia, © OpenStreetMap contributors, and the GIS user community

- Proposed Action Site
- Proposed Action Site 3000 ft Buffer
- ⊙ Hazardous Site of Concern

■ Hazardous Sites Buffer Zone (3000 ft)

1:23,927

1 inch = 1,993.953911 feet

0 0.35 0.7 Miles



# NJDEP HUD Environmental Review Tool

New Jersey Dept of Environmental Protection - HUD Environmental Review Tool  
Hazardous Sites of Concern

Application ID#:

NCR40029f

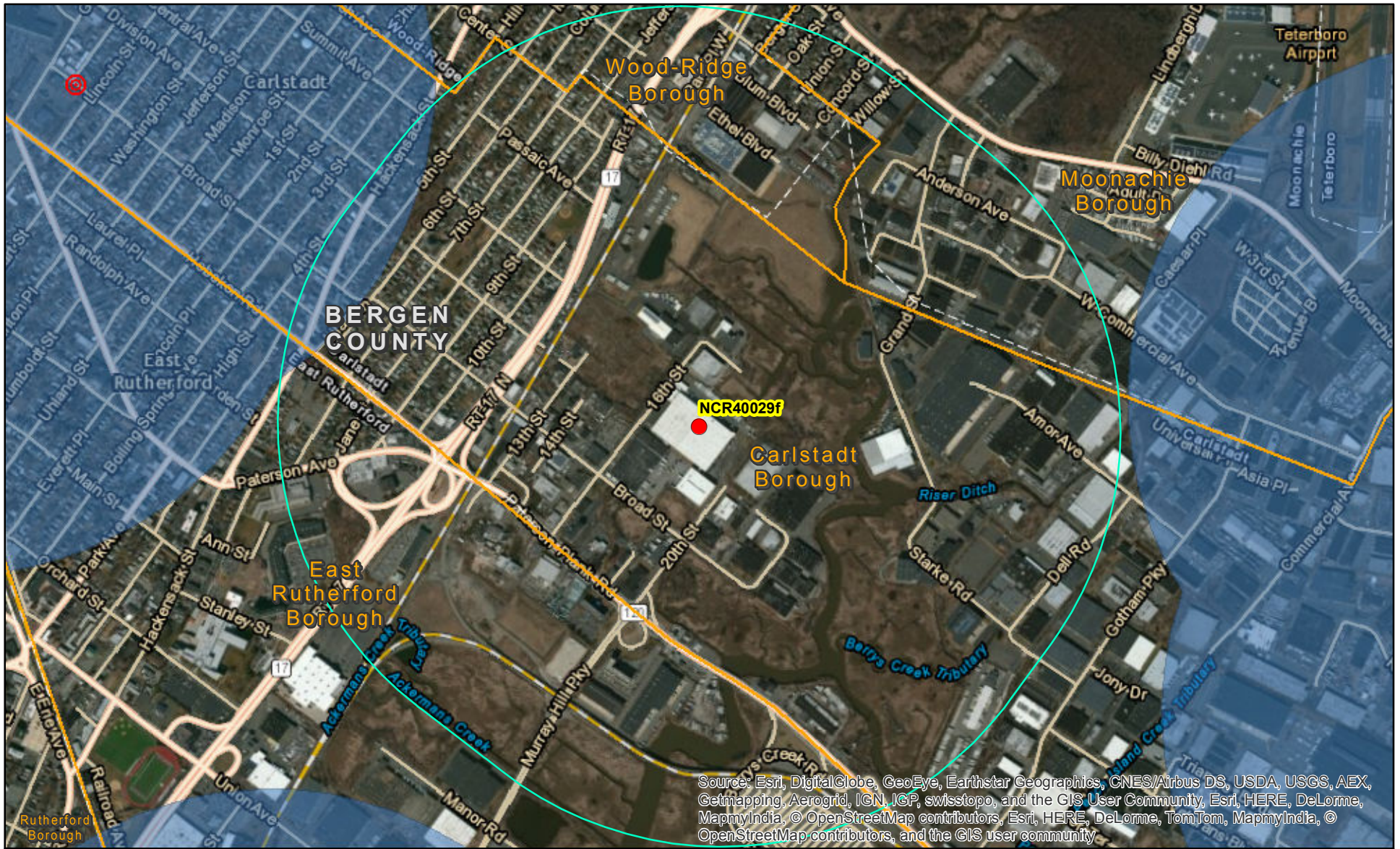
PAMS PIN:

Address:

455 16th Street

Municipality:

Carlstadt Boro



Source: Esri, DigitalGlobe, GeoEye, Earthstar Geographics, CNES/Airbus DS, USDA, USGS, AEX, Getmapping, Aerogrid, IGN, IGP, swisstopo, and the GIS User Community, Esri, HERE, DeLorme, MapmyIndia, © OpenStreetMap contributors, Esri, HERE, DeLorme, TomTom, MapmyIndia, © OpenStreetMap contributors, and the GIS user community

- Proposed Action Site
- Proposed Action Site 3000 ft Buffer
- ⊙ Hazardous Site of Concern

■ Hazardous Sites Buffer Zone (3000 ft)

1:18,398

1 inch = 1,533.180835 feet

0 0.275 0.55 Miles

