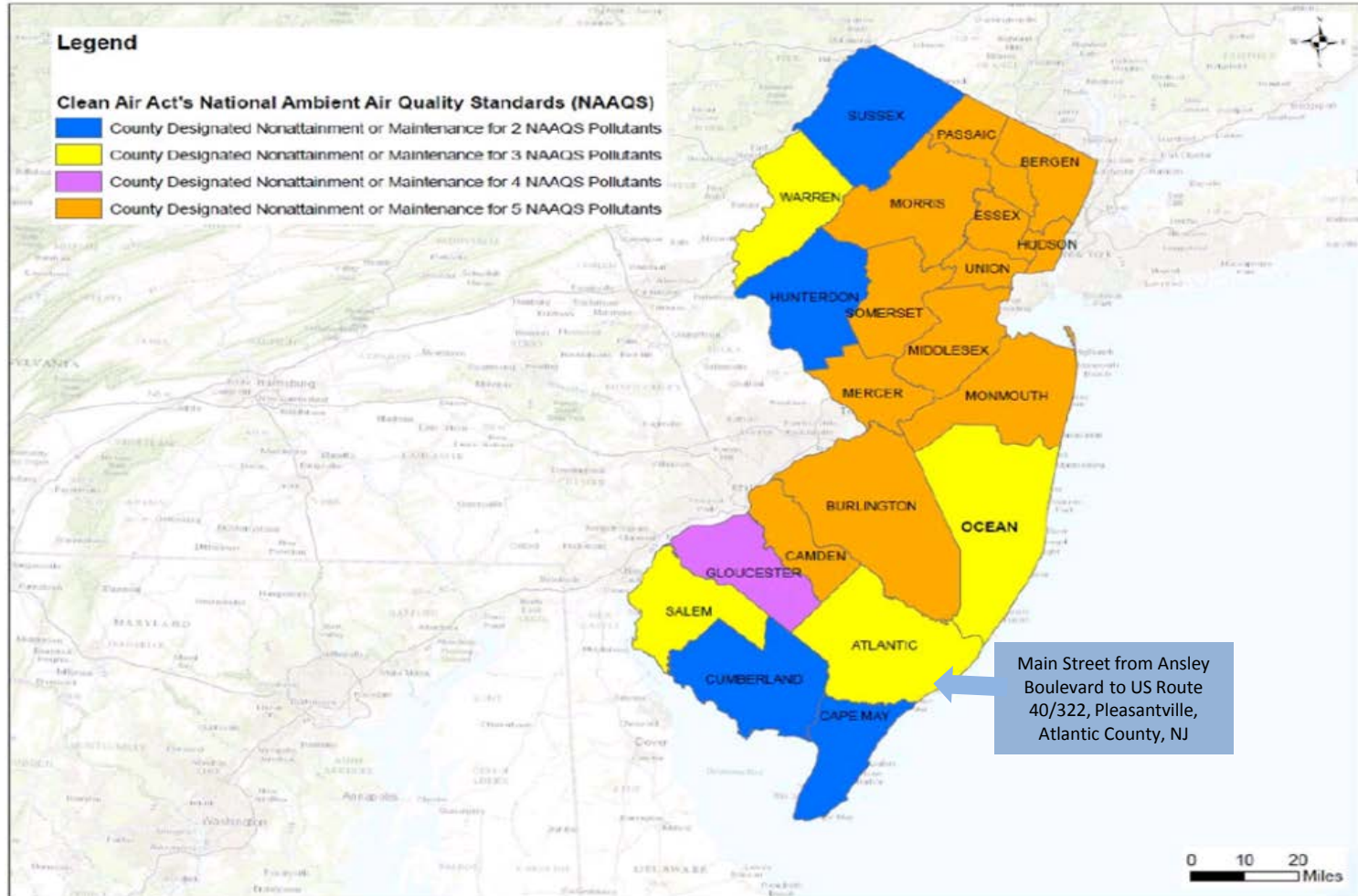
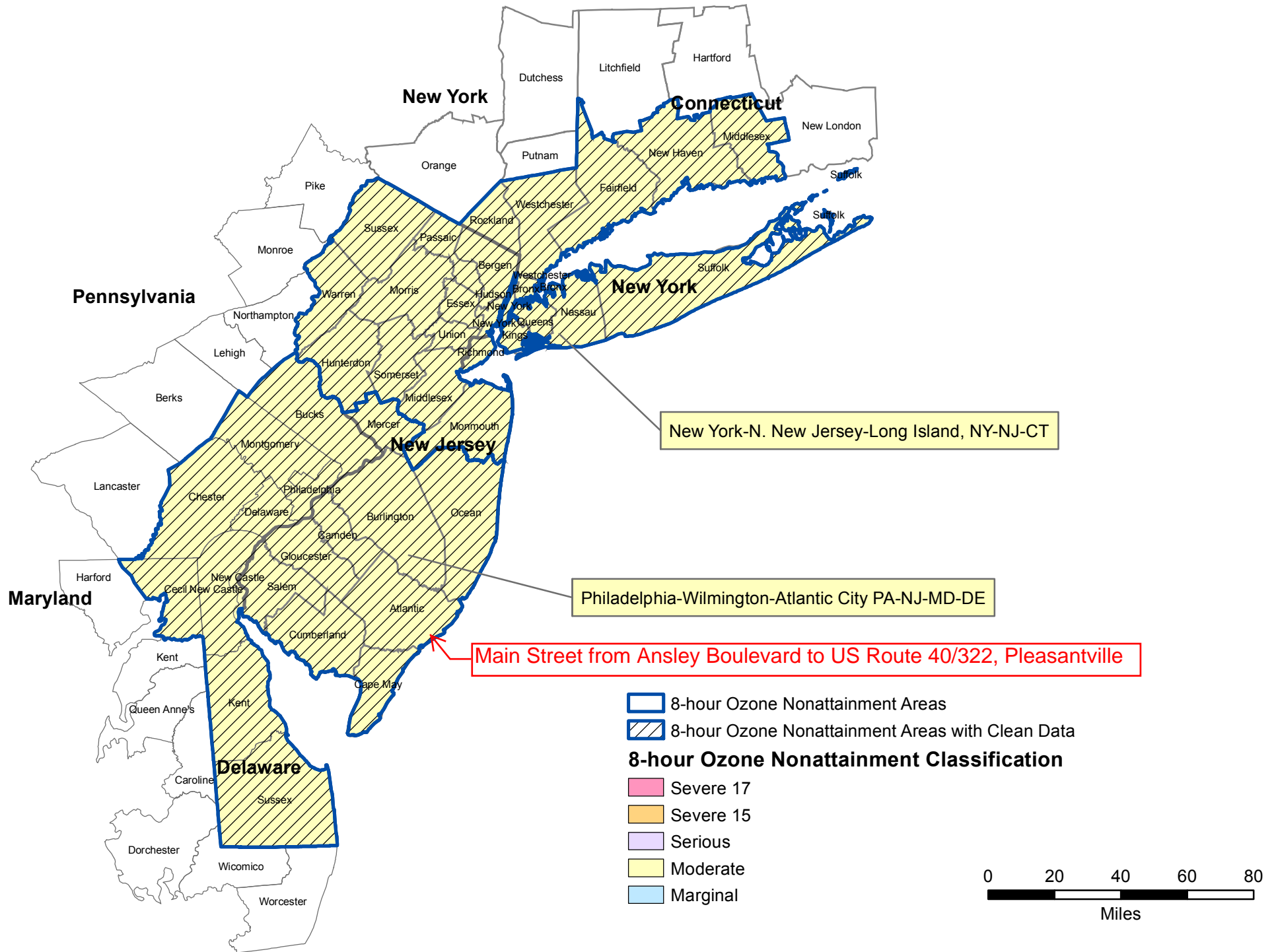


## Counties Designated “Nonattainment” or “Maintenance” for Clean Air Act’s National Ambient Air Quality Standards (NAAQS)



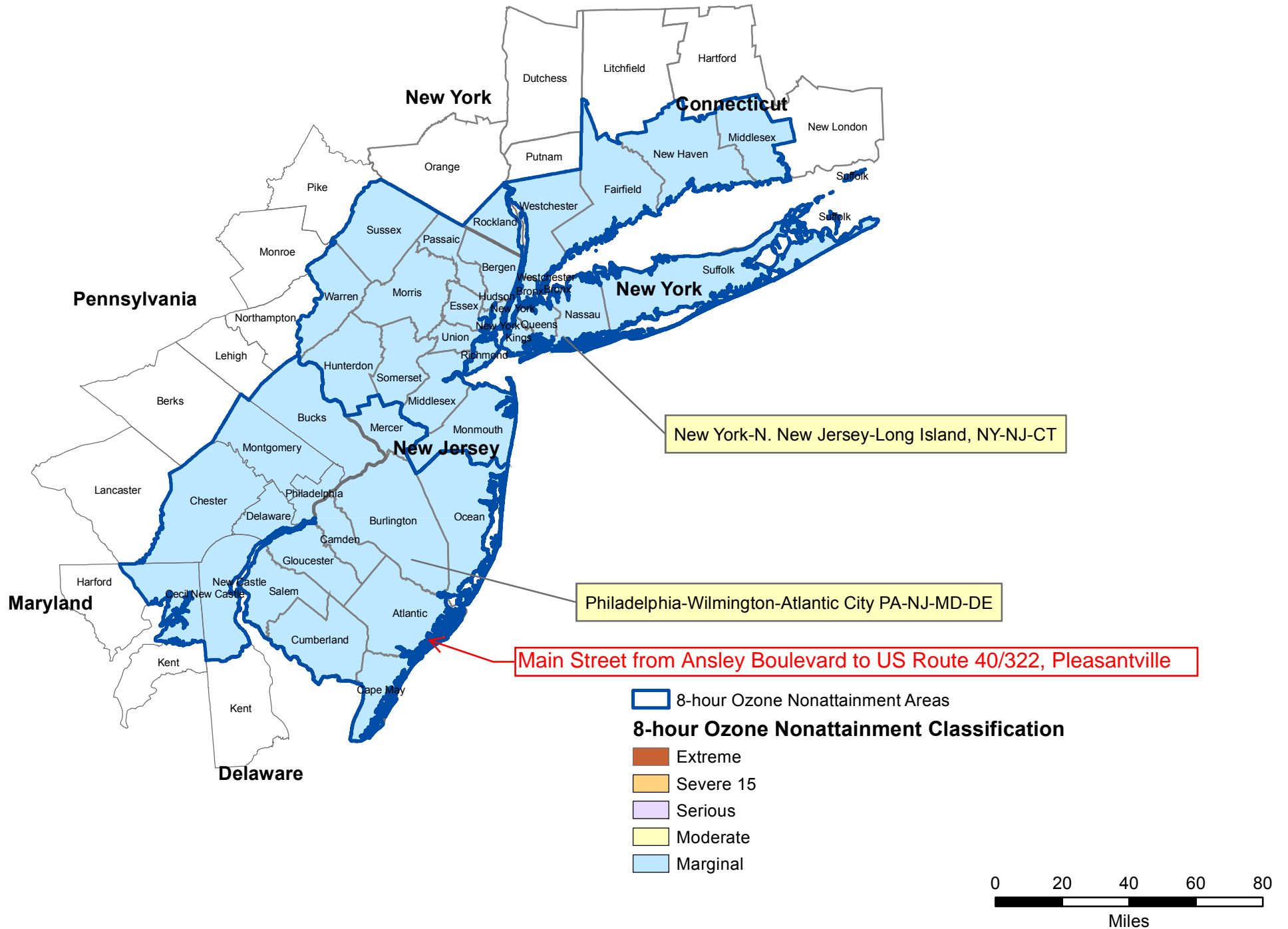
# New Jersey 8-hour Ozone Nonattainment Areas (1997 Standard)

7/02/2014



# New Jersey 8-hour Ozone Nonattainment Areas (2008 Standard)

7/02/2014





## Green Book

You are here: [EPA Home](#) [Green Book](#) Carbon Monoxide (1971) Maintenance  
State/Area/County Report (Redesignated from Nonattainment)

# Carbon Monoxide (1971) Maintenance State/Area/County Report (Redesignated from Nonattainment)

---

As of July 02, 2014

---

### **ALASKA (Region X)**

Anchorage, AK (Serious)  
Anchorage Municipality (P)  
*Portion of Anchorage urban area*

Fairbanks, AK (Serious)  
Fairbanks North Star Borough (P)  
*Portion of Fairbanks urban area*

### **ARIZONA (Region IX)**

Phoenix, AZ (Serious)  
Maricopa Co (P)

Tucson, AZ (Not Classified)  
Pima Co (P)  
*Portion of Tucson urban area*

### **CALIFORNIA (Region IX)**

Bakersfield, CA (Not Classified)  
Kern Co (P)

Chico, CA (Moderate  $\leq$  12.7ppm)  
Butte Co (P)

Fresno, CA (Moderate  $>$  12.7ppm)  
Fresno Co (P)  
*Fresno Urbanized Area (11/20/85, 50 FR 47735)*

Lake Tahoe North Shore, CA (Not Classified)  
Placer Co (P)

Lake Tahoe South Shore, CA (Moderate  $\leq$  12.7ppm)  
El Dorado Co (P)

Los Angeles-South Coast Air Basin, CA (Serious)  
Los Angeles Co (P)  
Orange Co  
Riverside Co (P)  
San Bernardino Co (P)

Modesto, CA (Moderate  $\leq$  12.7ppm)  
Stanislaus Co (P)

Sacramento, CA (Moderate <= 12.7ppm)  
Placer Co (P)  
Sacramento Co (P)  
Yolo Co (P)

San Diego, CA (Moderate <= 12.7ppm)  
San Diego Co (P)

San Francisco-Oakland-San Jose, CA (Moderate <= 12.7ppm)  
Alameda Co (P)  
Contra Costa Co (P)  
Marin Co (P)  
Napa Co (P)  
San Francisco Co  
San Mateo Co (P)  
Santa Clara Co (P)  
Solano Co (P)  
Sonoma Co (P)

Stockton, CA (Moderate <= 12.7ppm)  
San Joaquin Co (P)

**COLORADO (Region VIII)**

Colorado Springs, CO (Moderate <= 12.7ppm)  
El Paso Co (P)  
Teller Co (P)

Denver-Boulder, CO (Serious)

Adams Co (P)  
*Denver Metro Area*  
Arapahoe Co (P)  
*Denver Metro Area*  
Boulder Co (P)  
*Denver Metro Area*  
Broomfield Co  
Denver Co  
Douglas Co (P)  
*Denver Metro Area*  
Jefferson Co (P)  
*Denver Metro Area*

Fort Collins, CO (Moderate <= 12.7ppm)  
Larimer Co (P)

Greeley, CO (Not Classified)  
Weld Co (P)

Longmont, CO (Moderate <= 12.7ppm)  
Boulder Co (P)  
*Portion of Longmont*  
Weld Co (P)  
*Portion of Longmont*

**CONNECTICUT (Region I)**

Hartford-New Britain-Middletown, CT (Moderate <= 12.7ppm)

Hartford Co (P)  
Litchfield Co (P)  
*Plymouth Town*  
Middlesex Co (P)  
Tolland Co (P)

New Haven-Meriden-Waterbury, CT (Not Classified)  
Fairfield Co (P)  
*Shelton City*  
Litchfield Co (P)  
*Bethlehem Town, Thomaston Town, Watertown, Woodbury Town.*  
New Haven Co

New York-N. New Jersey-Long Island, NY-NJ-CT (Moderate > 12.7ppm)  
Fairfield Co (P)  
*All cities and townships except Shelton city*  
Litchfield Co (P)  
*Bridgewater town, New Milford town*

**DISTRICT OF COLUMBIA (Region III)**

Washington, DC-MD-VA (Moderate <= 12.7ppm)  
Entire District

**IDAHO (Region X)**

Boise-Northern Ada County, ID (Not Classified)  
Ada Co (P)  
*Northern half of Ada Co*

**INDIANA (Region V)**

East Chicago, IN (Not Classified)  
Lake Co (P)

Indianapolis, IN (Not Classified)  
Marion Co (P)

**MARYLAND (Region III)**

Baltimore, MD (Moderate <= 12.7ppm)  
Baltimore (City) (P)

Washington, DC-MD-VA (Moderate <= 12.7ppm)  
Montgomery Co (P)  
*Election Districts 4, 7, 13*  
Prince George's Co (P)  
*Election Districts 2, 6, 12, 16, 17, 18*

**MASSACHUSETTS (Region I)**

Boston, MA (Moderate <= 12.7ppm)  
Middlesex Co (P)  
*Cities of: Cambridge, Everett, Malden, Medford, and Somerville.*  
Norfolk Co (P)  
*Quincy City*

Suffolk Co (P)  
*Cities of: Boston, Chelsea, and Revere*

Lowell, MA (Not Classified)  
Middlesex Co (P)

*Lowell City*

Springfield, MA (Not Classified)  
Hampden Co (P)  
*Springfield City*

Waltham, MA (Not Classified)  
Middlesex Co (P)  
*Waltham City*

Worcester, MA (Not Classified)  
Worcester Co (P)  
*City of Worcester*

**MICHIGAN (Region V)**

Detroit, MI (Not Classified)  
Macomb Co (P)  
*A portion of Detroit*  
Oakland Co (P)  
*A portion of Detroit*  
Wayne Co (P)  
*A portion of Detroit*

**MINNESOTA (Region V)**

Duluth, MN (Moderate  $\leq$  12.7ppm)  
St Louis Co (P)  
*City of Duluth*

Minneapolis-St. Paul, MN (Moderate  $\leq$  12.7ppm)  
Anoka Co  
Carver Co (P)  
Dakota Co (P)  
Hennepin Co  
Ramsey Co  
Scott Co (P)  
Washington Co (P)  
*All cities and townships except Denmark Township.*  
Wright Co (P)

**MISSOURI (Region VII)**

St. Louis, MO (Not Classified)  
St Louis  
St Louis Co (P)  
*The area encompassed by the I-270 and the Mississippi River.*

**MONTANA (Region VIII)**

Billings, MT (Not Classified)  
Yellowstone Co (P)  
*Certain ranges and townships*

Great Falls, MT (Not Classified)  
Cascade Co (P)

Missoula, MT (Moderate  $\leq$  12.7ppm)  
Missoula Co (P)

**NEVADA (Region IX)**

Lake Tahoe, NV (Not Classified)

Carson City (P)

*Hydrographic Area 90*

Douglas Co (P)

*Hydrographic Area 90*

Washoe Co (P)

*Hydrographic Area 90*

Las Vegas, NV (Serious)

Clark Co (P)

*Las Vegas Valley Hydrographic Area 212*

Reno, NV (Moderate  $\leq$  12.7ppm)

Washoe Co (P)

*Truckee Meadows Hydrographic Area 87*

**NEW HAMPSHIRE (Region I)**

Manchester, NH (Not Classified)

Hillsborough Co (P)

*City of Manchester*

Nashua, NH (Not Classified)

Hillsborough Co (P)

*City of Nashua*

**NEW JERSEY (Region II)**

Atlantic City, NJ (Not Classified)

**Atlantic Co (P)**

*The City of Atlantic City*

Burlington, NJ (Not Classified)

Burlington Co (P)

*City of Burlington*

Freehold, NJ (Not Classified)

Monmouth Co (P)

*Borough of Freehold*

Morristown, NJ (Not Classified)

Morris Co (P)

*City of Morristown*

New York-N. New Jersey-Long Island, NY-NJ-CT (Moderate  $>$  12.7ppm)

Bergen Co

Essex Co

Hudson Co

Passaic Co (P)

*City of Clifton, City of Patterson, City of Passaic*

Union Co

Penns Grove, NJ (Not Classified)

Salem Co (P)

Perth Amboy, NJ (Not Classified)

Middlesex Co (P)



*City of Perth Amboy*

Philadelphia-Camden Co, PA-NJ (Moderate  $\leq$  12.7ppm)

Camden Co

Somerville, NJ (Not Classified)

Somerset Co (P)

*Borough of Somerville*

Toms River, NJ (Not Classified)

Ocean Co (P)

*City of Toms River*

Trenton, NJ (Not Classified)

Mercer Co (P)

*City of Trenton*

**NEW MEXICO (Region VI)**

Albuquerque, NM (Moderate  $\leq$  12.7ppm)

Bernalillo Co

**NEW YORK (Region II)**

New York-N. New Jersey-Long Island, NY-NJ-CT (Moderate  $>$  12.7ppm)

Bronx Co

Kings Co

Nassau Co

New York Co

Queens Co

Richmond Co

Westchester Co

Syracuse, NY (Moderate  $\leq$  12.7ppm)

Onondaga Co

**NORTH CAROLINA (Region IV)**

Charlotte, NC (Not Classified)

Mecklenburg Co

Raleigh-Durham, NC (Moderate  $\leq$  12.7ppm)

Durham Co

Wake Co

Winston-Salem, NC (Moderate  $\leq$  12.7ppm)

Forsyth Co

**OHIO (Region V)**

Cleveland, OH (Moderate  $\leq$  12.7ppm)

Cuyahoga Co

**OREGON (Region X)**

Eugene-Springfield, OR (Not Classified)

Lane Co (P)

*Air Quality Maintenance Area*

Grants Pass, OR (Moderate  $\leq$  12.7ppm)

Josephine Co (P)

*Central Business District*

Klamath Falls, OR (Moderate <= 12.7ppm)  
Klamath Co (P)  
*Urban Growth Boundary*

Medford, OR (Moderate <= 12.7ppm)  
Jackson Co (P)  
*Medford-Ashland Urban Growth Boundary*

Portland, OR (Moderate <= 12.7ppm)  
Clackamas Co (P)  
*Portland Metro Service District Boundary*  
Multnomah Co (P)  
*Portland Metro Service District Boundary*  
Washington Co (P)  
*Portland Metro Service District Boundary*

Salem, OR (Not Classified)  
Marion Co (P)  
*City of Salem*  
Polk Co (P)  
*City of Salem*

**PENNSYLVANIA (Region III)**

Philadelphia-Camden Co, PA-NJ (Moderate <= 12.7ppm)  
Philadelphia Co (P)

Pittsburgh, PA (Not Classified)  
Allegheny Co (P)

**TENNESSEE (Region IV)**

Memphis, TN (Moderate <= 12.7ppm)  
Shelby Co

**TEXAS (Region VI)**

El Paso, TX (Moderate <= 12.7ppm)  
El Paso Co (P)  
*Portion of the City Limits of El Paso*

**UTAH (Region VIII)**

Ogden, UT (Moderate <= 12.7ppm)  
Weber Co (P)  
*City of Ogden*

Provo, UT (Moderate > 12.7ppm)  
Utah Co (P)  
*City of Provo*

Salt Lake City, UT (Not Classified)  
Salt Lake Co (P)  
*Salt Lake City*

**VIRGINIA (Region III)**

Washington, DC-MD-VA (Moderate <= 12.7ppm)  
Alexandria

Arlington Co

**WASHINGTON (Region X)**

Seattle-Tacoma, WA (Moderate > 12.7ppm)

King Co (P)

Pierce Co (P)

Snohomish Co (P)

Spokane, WA (Serious)

Spokane Co (P)

Vancouver, WA (Moderate <= 12.7ppm)

Clark Co (P)

Yakima, WA (Not Classified)

Yakima Co (P)

*Portion of the Central Business District*

[Go Top](#)