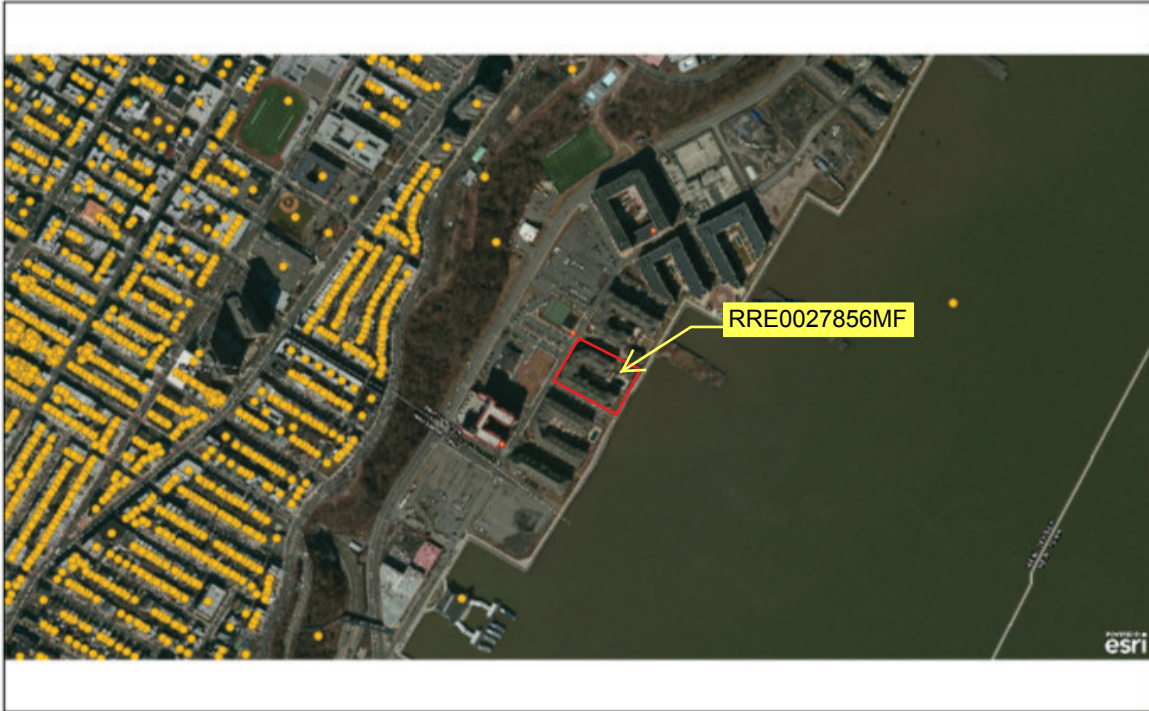


**NJDEP HUD Environmental Review Tool 2.1**

Hurricane Sandy Relief Environmental Review Tool developed by the New Jersey Department of Environmental Protection (NJDEP) to support the Tier 2 Document Review screening required by the US Dept. of Housing and Urban Development (HUD).



Source: Esri, DigitalGlobe, GeoEye, Earthstar Geographics, CNES/Airbus DS, USDA, USGS, AEX, Getmapping, Aerogrid, IGN, IGP, swisstopo, and the GIS User Community

**Map Legend:**



**HUD Review Parcel – Centroids**



**Parcel Boundaries of the Proposed Action Site**