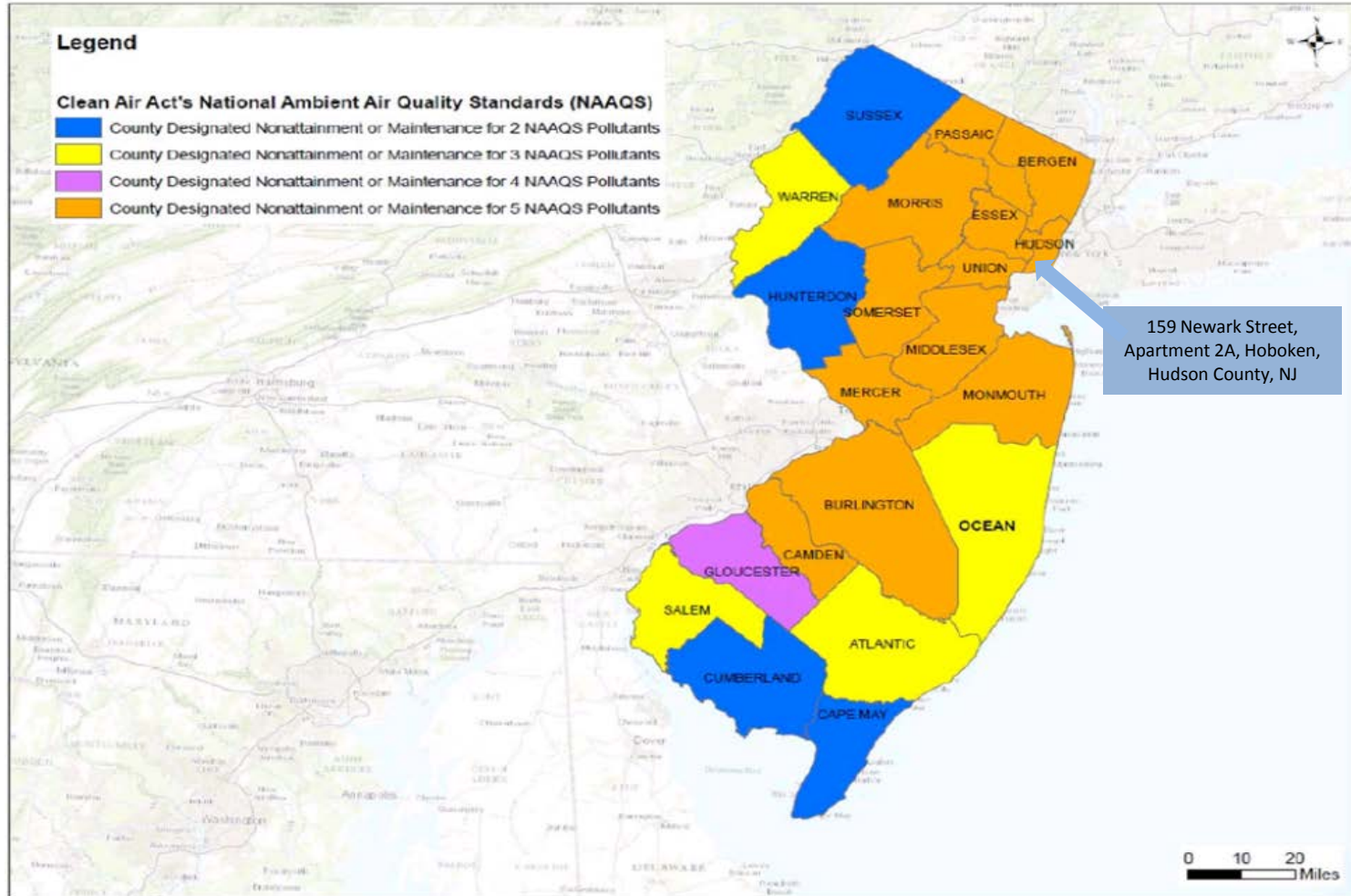
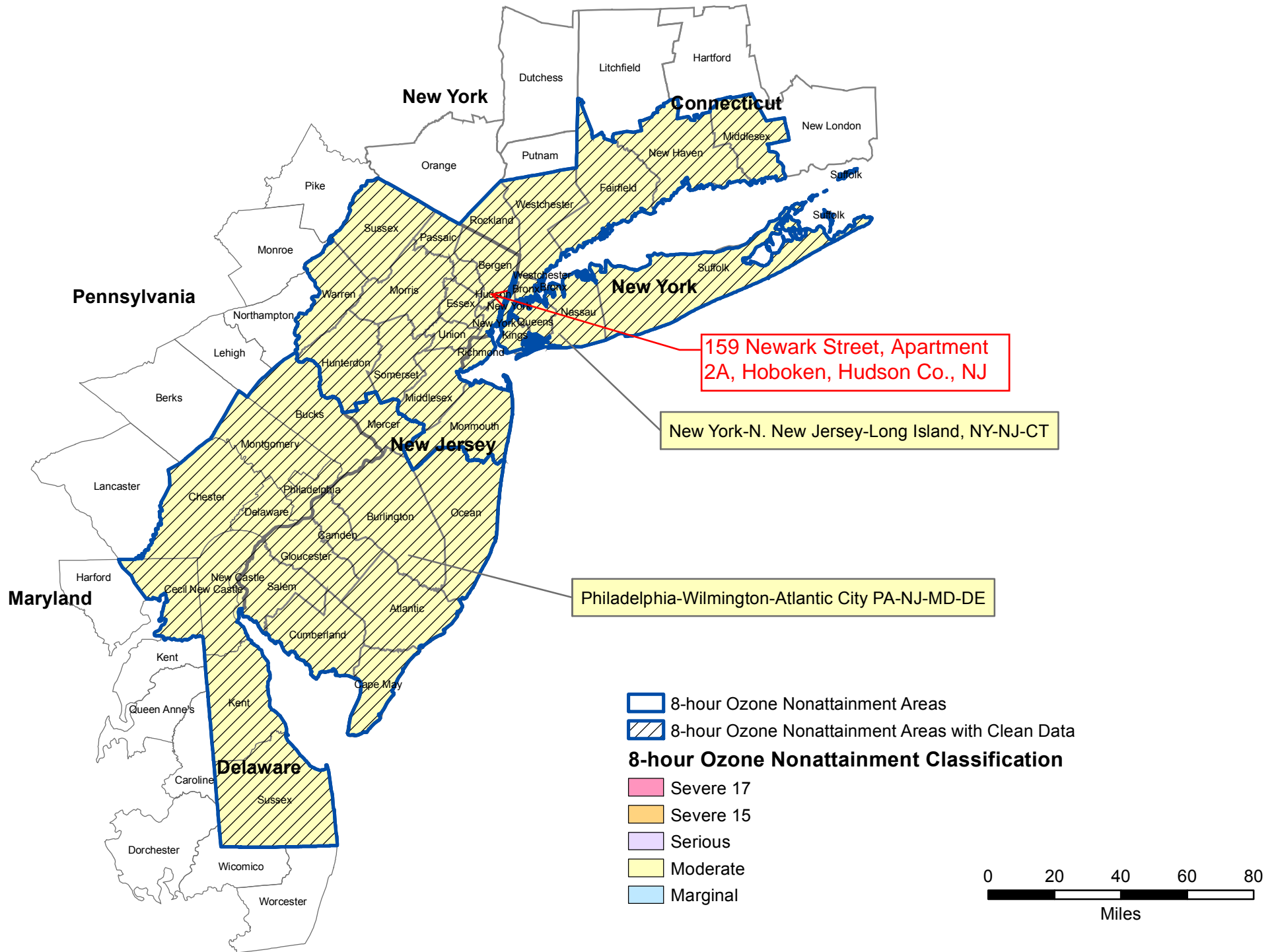


Counties Designated “Nonattainment” or “Maintenance” for Clean Air Act’s National Ambient Air Quality Standards (NAAQS)



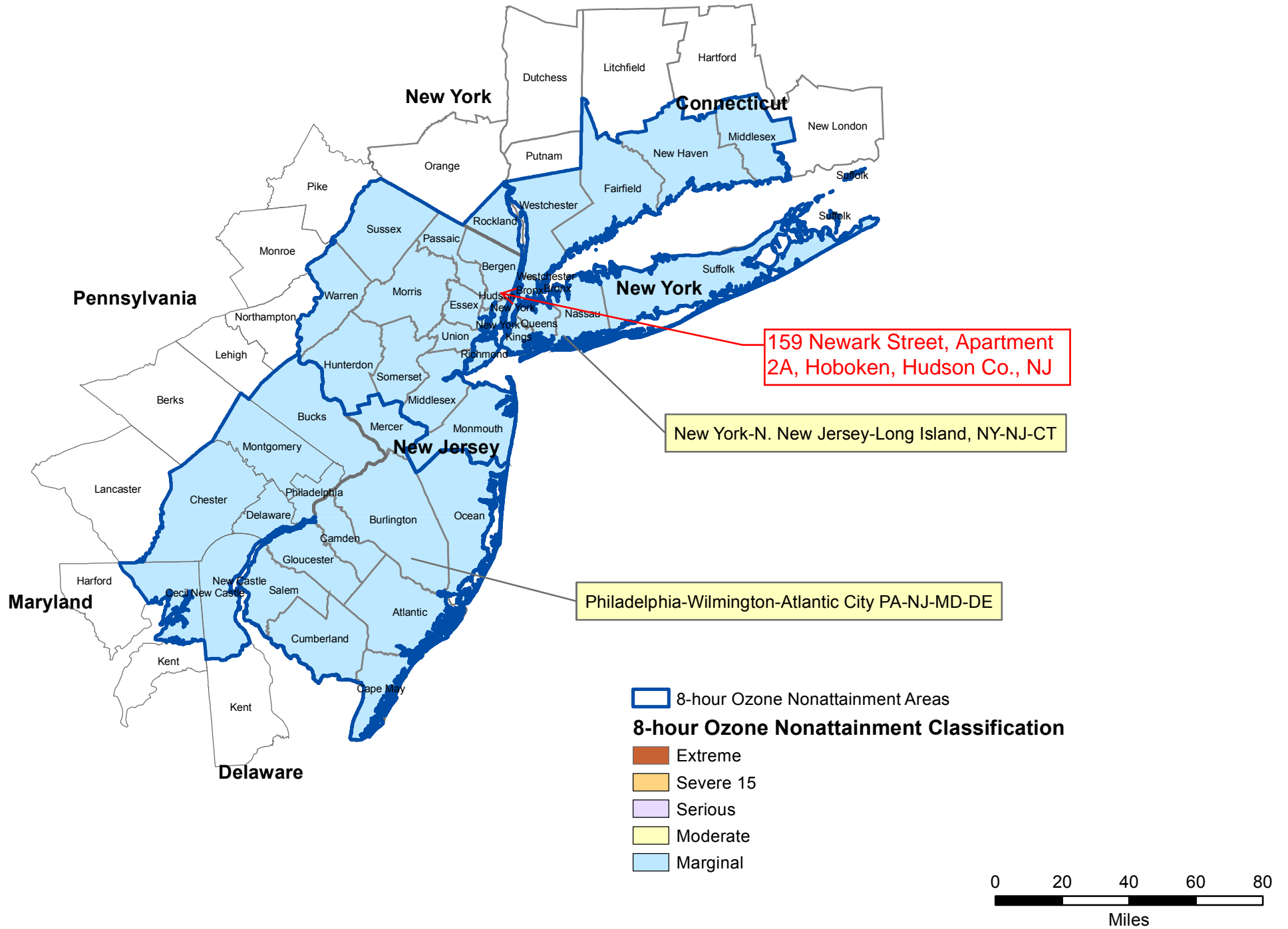
New Jersey 8-hour Ozone Nonattainment Areas (1997 Standard)

7/02/2014



New Jersey 8-hour Ozone Nonattainment Areas (2008 Standard)

7/02/2014





Green Book

You are here: [EPA Home](#) [Green Book](#) Carbon Monoxide (1971) Maintenance
State/Area/County Report (Redesignated from Nonattainment)

Carbon Monoxide (1971) Maintenance State/Area/County Report (Redesignated from Nonattainment)

As of July 02, 2014

ALASKA (Region X)

[Anchorage, AK](#) (Serious)
Anchorage Municipality (P)
Portion of Anchorage urban area

[Fairbanks, AK](#) (Serious)
Fairbanks North Star Borough (P)
Portion of Fairbanks urban area

ARIZONA (Region IX)

[Phoenix, AZ](#) (Serious)
Maricopa Co (P)

[Tucson, AZ](#) (Not Classified)
Pima Co (P)
Portion of Tucson urban area

CALIFORNIA (Region IX)

[Bakersfield, CA](#) (Not Classified)
Kern Co (P)

[Chico, CA](#) (Moderate \leq 12.7ppm)
Butte Co (P)

[Fresno, CA](#) (Moderate $>$ 12.7ppm)
Fresno Co (P)
Fresno Urbanized Area (11/20/85, 50 FR 47735)

[Lake Tahoe North Shore, CA](#) (Not Classified)
Placer Co (P)

[Lake Tahoe South Shore, CA](#) (Moderate \leq 12.7ppm)
El Dorado Co (P)

[Los Angeles-South Coast Air Basin, CA](#) (Serious)
Los Angeles Co (P)
Orange Co
Riverside Co (P)
San Bernardino Co (P)

[Modesto, CA](#) (Moderate \leq 12.7ppm)
Stanislaus Co (P)

Sacramento, CA (Moderate <= 12.7ppm)
Placer Co (P)
Sacramento Co (P)
Yolo Co (P)

San Diego, CA (Moderate <= 12.7ppm)
San Diego Co (P)

San Francisco-Oakland-San Jose, CA (Moderate <= 12.7ppm)
Alameda Co (P)
Contra Costa Co (P)
Marin Co (P)
Napa Co (P)
San Francisco Co
San Mateo Co (P)
Santa Clara Co (P)
Solano Co (P)
Sonoma Co (P)

Stockton, CA (Moderate <= 12.7ppm)
San Joaquin Co (P)

COLORADO (Region VIII)

Colorado Springs, CO (Moderate <= 12.7ppm)
El Paso Co (P)
Teller Co (P)

Denver-Boulder, CO (Serious)

Adams Co (P)
Denver Metro Area
Arapahoe Co (P)
Denver Metro Area
Boulder Co (P)
Denver Metro Area
Broomfield Co
Denver Co
Douglas Co (P)
Denver Metro Area
Jefferson Co (P)
Denver Metro Area

Fort Collins, CO (Moderate <= 12.7ppm)
Larimer Co (P)

Greeley, CO (Not Classified)
Weld Co (P)

Longmont, CO (Moderate <= 12.7ppm)
Boulder Co (P)
Portion of Longmont
Weld Co (P)
Portion of Longmont

CONNECTICUT (Region I)

Hartford-New Britain-Middletown, CT (Moderate <= 12.7ppm)

Hartford Co (P)
Litchfield Co (P)
Plymouth Town
Middlesex Co (P)
Tolland Co (P)

New Haven-Meriden-Waterbury, CT (Not Classified)
Fairfield Co (P)
Shelton City
Litchfield Co (P)
Bethlehem Town, Thomaston Town, Watertown, Woodbury Town.
New Haven Co

New York-N. New Jersey-Long Island, NY-NJ-CT (Moderate > 12.7ppm)
Fairfield Co (P)
All cities and townships except Shelton city
Litchfield Co (P)
Bridgewater town, New Milford town

DISTRICT OF COLUMBIA (Region III)

Washington, DC-MD-VA (Moderate <= 12.7ppm)
Entire District

IDAHO (Region X)

Boise-Northern Ada County, ID (Not Classified)
Ada Co (P)
Northern half of Ada Co

INDIANA (Region V)

East Chicago, IN (Not Classified)
Lake Co (P)

Indianapolis, IN (Not Classified)
Marion Co (P)

MARYLAND (Region III)

Baltimore, MD (Moderate <= 12.7ppm)
Baltimore (City) (P)

Washington, DC-MD-VA (Moderate <= 12.7ppm)
Montgomery Co (P)
Election Districts 4, 7, 13
Prince George's Co (P)
Election Districts 2, 6, 12, 16, 17, 18

MASSACHUSETTS (Region I)

Boston, MA (Moderate <= 12.7ppm)
Middlesex Co (P)
Cities of: Cambridge, Everett, Malden, Medford, and Somerville.
Norfolk Co (P)
Quincy City

Suffolk Co (P)
Cities of: Boston, Chelsea, and Revere

Lowell, MA (Not Classified)
Middlesex Co (P)

Lowell City

Springfield, MA (Not Classified)
Hampden Co (P)
Springfield City

Waltham, MA (Not Classified)
Middlesex Co (P)
Waltham City

Worcester, MA (Not Classified)
Worcester Co (P)
City of Worcester

MICHIGAN (Region V)

Detroit, MI (Not Classified)
Macomb Co (P)
A portion of Detroit
Oakland Co (P)
A portion of Detroit
Wayne Co (P)
A portion of Detroit

MINNESOTA (Region V)

Duluth, MN (Moderate \leq 12.7ppm)
St Louis Co (P)
City of Duluth

Minneapolis-St. Paul, MN (Moderate \leq 12.7ppm)
Anoka Co
Carver Co (P)
Dakota Co (P)
Hennepin Co
Ramsey Co
Scott Co (P)
Washington Co (P)
All cities and townships except Denmark Township.
Wright Co (P)

MISSOURI (Region VII)

St. Louis, MO (Not Classified)
St Louis
St Louis Co (P)
The area encompassed by the I-270 and the Mississippi River.

MONTANA (Region VIII)

Billings, MT (Not Classified)
Yellowstone Co (P)
Certain ranges and townships

Great Falls, MT (Not Classified)
Cascade Co (P)

Missoula, MT (Moderate \leq 12.7ppm)
Missoula Co (P)

NEVADA (Region IX)

Lake Tahoe, NV (Not Classified)

Carson City (P)

Hydrographic Area 90

Douglas Co (P)

Hydrographic Area 90

Washoe Co (P)

Hydrographic Area 90

Las Vegas, NV (Serious)

Clark Co (P)

Las Vegas Valley Hydrographic Area 212

Reno, NV (Moderate \leq 12.7ppm)

Washoe Co (P)

Truckee Meadows Hydrographic Area 87

NEW HAMPSHIRE (Region I)

Manchester, NH (Not Classified)

Hillsborough Co (P)

City of Manchester

Nashua, NH (Not Classified)

Hillsborough Co (P)

City of Nashua

NEW JERSEY (Region II)

Atlantic City, NJ (Not Classified)

Atlantic Co (P)

The City of Atlantic City

Burlington, NJ (Not Classified)

Burlington Co (P)

City of Burlington

Freehold, NJ (Not Classified)

Monmouth Co (P)

Borough of Freehold

Morristown, NJ (Not Classified)

Morris Co (P)

City of Morristown

New York-N. New Jersey-Long Island, NY-NJ-CT (Moderate $>$ 12.7ppm)

Bergen Co

Essex Co

Hudson Co

Passaic Co (P)

City of Clifton, City of Patterson, City of Passaic

Union Co

Penns Grove, NJ (Not Classified)

Salem Co (P)

Perth Amboy, NJ (Not Classified)

Middlesex Co (P)

City of Perth Amboy

Philadelphia-Camden Co, PA-NJ (Moderate \leq 12.7ppm)

Camden Co

Somerville, NJ (Not Classified)

Somerset Co (P)

Borough of Somerville

Toms River, NJ (Not Classified)

Ocean Co (P)

City of Toms River

Trenton, NJ (Not Classified)

Mercer Co (P)

City of Trenton

NEW MEXICO (Region VI)

Albuquerque, NM (Moderate \leq 12.7ppm)

Bernalillo Co

NEW YORK (Region II)

New York-N. New Jersey-Long Island, NY-NJ-CT (Moderate $>$ 12.7ppm)

Bronx Co

Kings Co

Nassau Co

New York Co

Queens Co

Richmond Co

Westchester Co

Syracuse, NY (Moderate \leq 12.7ppm)

Onondaga Co

NORTH CAROLINA (Region IV)

Charlotte, NC (Not Classified)

Mecklenburg Co

Raleigh-Durham, NC (Moderate \leq 12.7ppm)

Durham Co

Wake Co

Winston-Salem, NC (Moderate \leq 12.7ppm)

Forsyth Co

OHIO (Region V)

Cleveland, OH (Moderate \leq 12.7ppm)

Cuyahoga Co

OREGON (Region X)

Eugene-Springfield, OR (Not Classified)

Lane Co (P)

Air Quality Maintenance Area

Grants Pass, OR (Moderate \leq 12.7ppm)

Josephine Co (P)

Central Business District

Klamath Falls, OR (Moderate <= 12.7ppm)
Klamath Co (P)
Urban Growth Boundary

Medford, OR (Moderate <= 12.7ppm)
Jackson Co (P)
Medford-Ashland Urban Growth Boundary

Portland, OR (Moderate <= 12.7ppm)
Clackamas Co (P)
Portland Metro Service District Boundary
Multnomah Co (P)
Portland Metro Service District Boundary
Washington Co (P)
Portland Metro Service District Boundary

Salem, OR (Not Classified)
Marion Co (P)
City of Salem
Polk Co (P)
City of Salem

PENNSYLVANIA (Region III)

Philadelphia-Camden Co, PA-NJ (Moderate <= 12.7ppm)
Philadelphia Co (P)

Pittsburgh, PA (Not Classified)
Allegheny Co (P)

TENNESSEE (Region IV)

Memphis, TN (Moderate <= 12.7ppm)
Shelby Co

TEXAS (Region VI)

El Paso, TX (Moderate <= 12.7ppm)
El Paso Co (P)
Portion of the City Limits of El Paso

UTAH (Region VIII)

Ogden, UT (Moderate <= 12.7ppm)
Weber Co (P)
City of Ogden

Provo, UT (Moderate > 12.7ppm)
Utah Co (P)
City of Provo

Salt Lake City, UT (Not Classified)
Salt Lake Co (P)
Salt Lake City

VIRGINIA (Region III)

Washington, DC-MD-VA (Moderate <= 12.7ppm)
Alexandria

Arlington Co

WASHINGTON (Region X)

Seattle-Tacoma, WA (Moderate > 12.7ppm)

King Co (P)

Pierce Co (P)

Snohomish Co (P)

Spokane, WA (Serious)

Spokane Co (P)

Vancouver, WA (Moderate <= 12.7ppm)

Clark Co (P)

Yakima, WA (Not Classified)

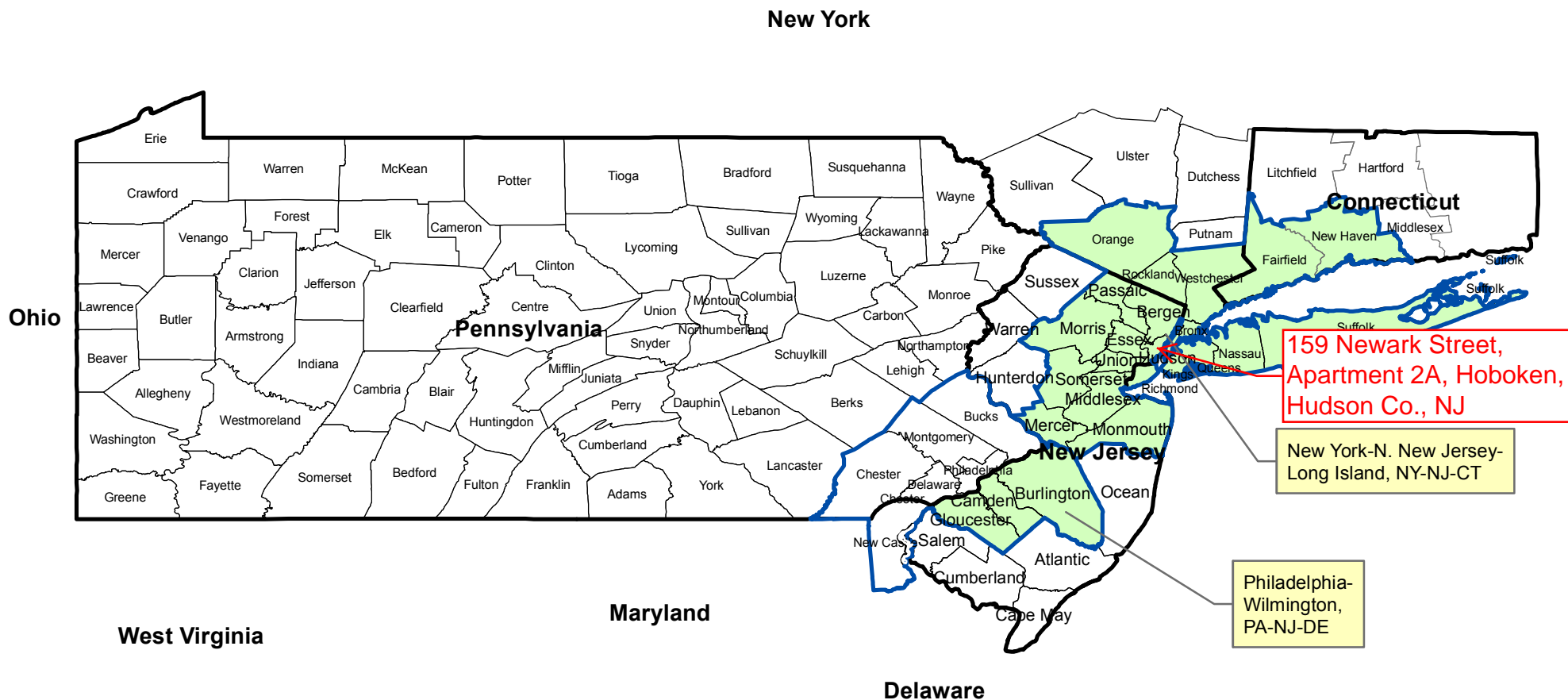
Yakima Co (P)

Portion of the Central Business District

[Go Top](#)

Pennsylvania, New York, New Jersey, Connecticut, Delaware PM-2.5 Maintenance Areas (2006 Standard)

7/02/2014



159 Newark Street,
Apartment 2A, Hoboken,
Hudson Co., NJ

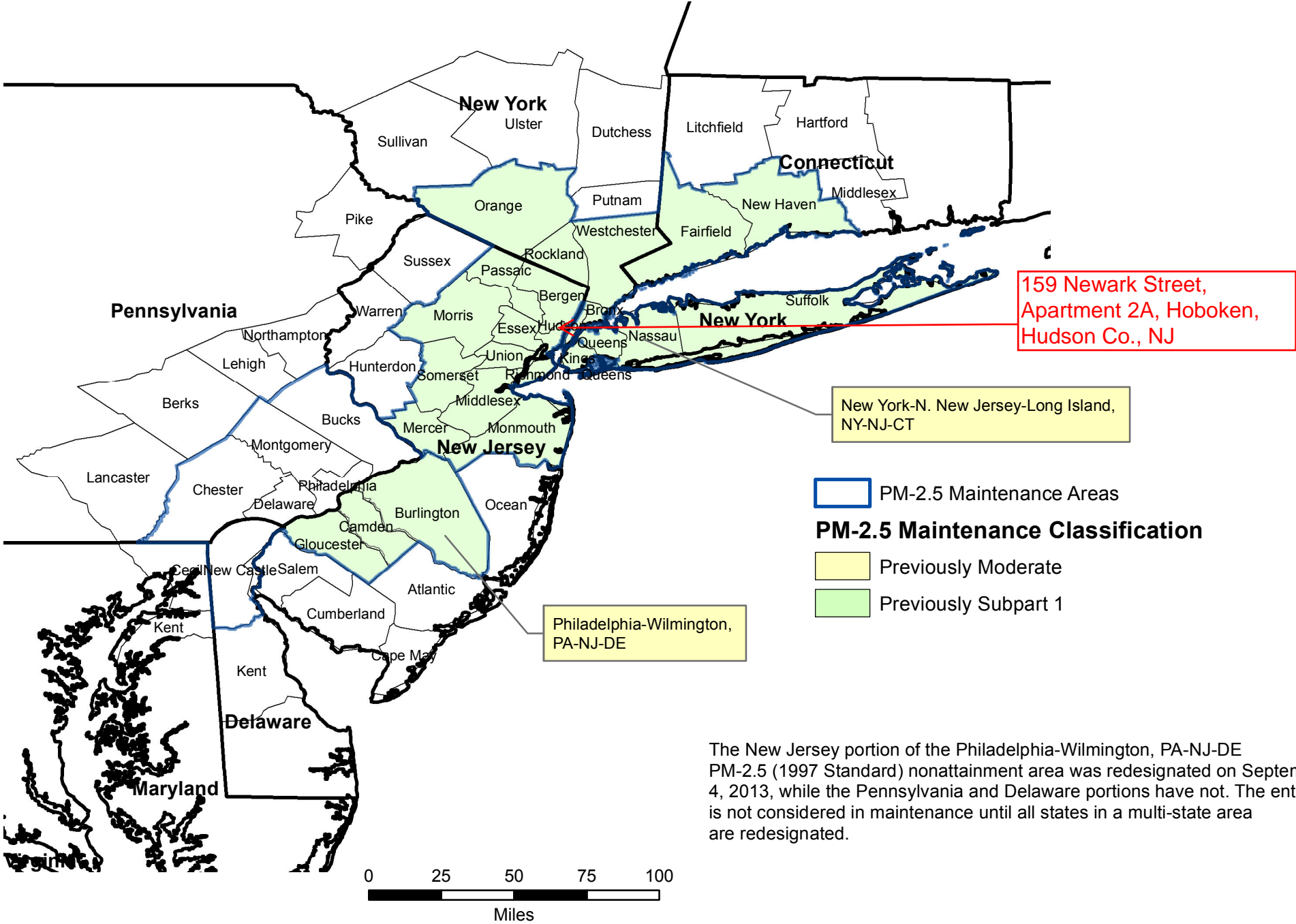
New York-N. New Jersey-
Long Island, NY-NJ-CT

Philadelphia-
Wilmington,
PA-NJ-DE

- PM-2.5 Maintenance Areas
- PM-2.5 Maintenance Classification**
- Previously Moderate
- Previously Subpart 1

The New Jersey portion of the Philadelphia-Wilmington, PA-NJ-DE PM-2.5 (2006 Standard) nonattainment area was redesignated on September 4, 2013, while the Pennsylvania and Delaware portions have not. The entire area is not considered in maintenance until all states in a multi-state area are redesignated.





The New Jersey portion of the Philadelphia-Wilmington, PA-NJ-DE PM-2.5 (1997 Standard) nonattainment area was redesignated on September 4, 2013, while the Pennsylvania and Delaware portions have not. The entire area is not considered in maintenance until all states in a multi-state area are redesignated.