

# NJDEP HUD Environmental Review Tool

New Jersey Dept of Environmental Protection - HUD Environmental Review Tool  
Prime Farmland Soils

Application ID#:

RRE0037228MF

PAMS PIN:

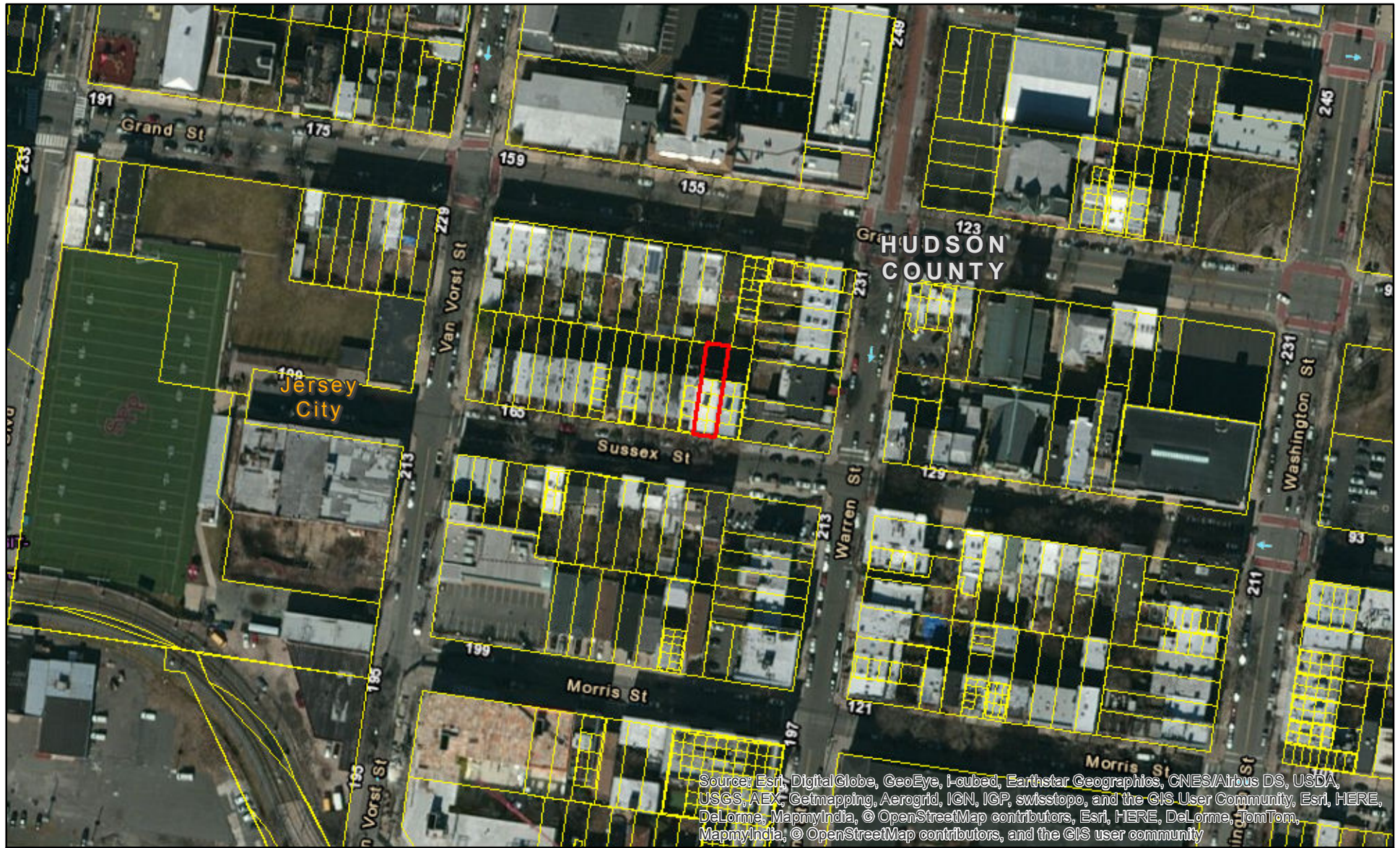
0906\_133\_76

Address:

130 Sussex Street Apt 1C

Municipality:

Jersey City



- Proposed Action Site
- HUD Review Parcels

- All areas are prime farmland
- Farmland of statewide importance
- Farmland of unique importance

1:2,400

1 inch = 200 feet

