

NJDEP HUD Environmental Review Tool

New Jersey Dept of Environmental Protection - HUD Environmental Review Tool
Sole Source Aquifers

Application ID#:

RRE0037228MF

PAMS PIN:

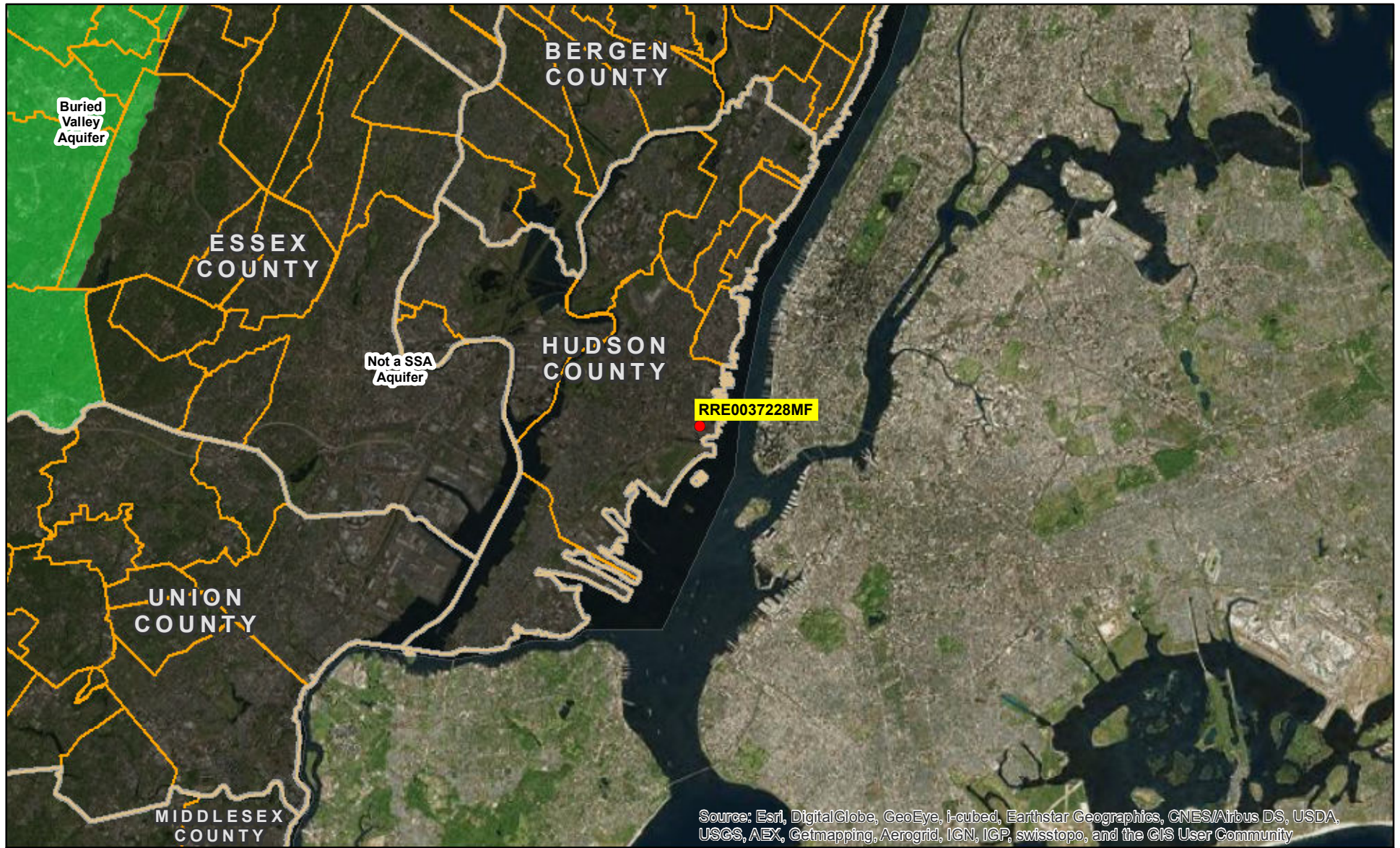
0906_133_76

Address:

130 Sussex Street Apt 1C

Municipality:

Jersey City



Source: Esri, DigitalGlobe, GeoEye, i-cubed, Earthstar Geographics, CNES/Airbus DS, USDA, USGS, AEX, Getmapping, Aerogrid, IGN, IGP, swisstopo, and the GIS User Community

- | | | |
|------------------------|-----------------|-----------------------------|
| ● Proposed Action Site | ■ Buried Valley | ■ Not a Sole-Source Aquifer |
| ■ Coastal Plain | ■ Ramapo | ■ Ridgewood |
| ■ Highlands | ■ Rockaway | |
| ■ Northwest New Jersey | | |

