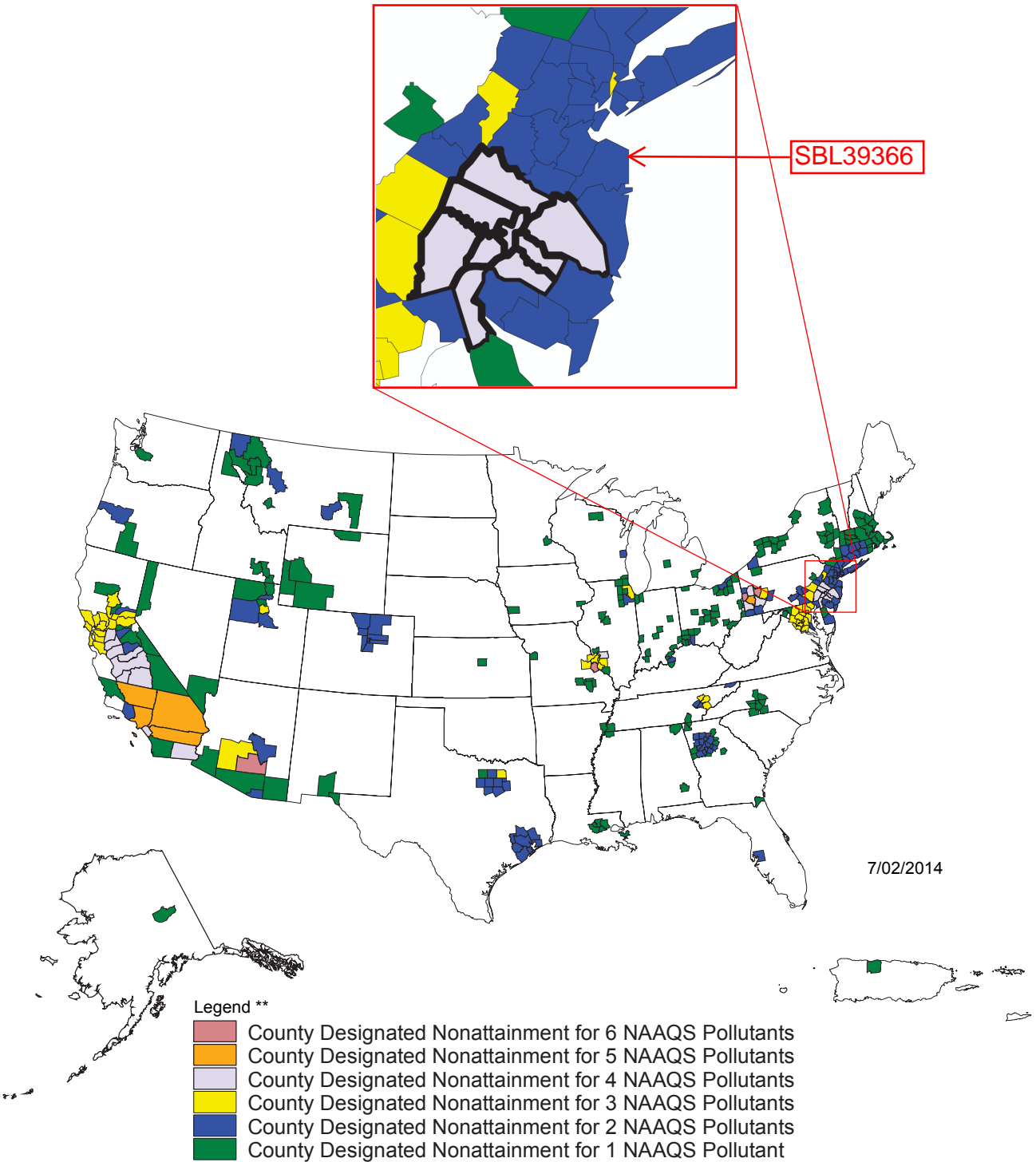


Counties Designated "Nonattainment"

for Clean Air Act's National Ambient Air Quality Standards (NAAQS) *



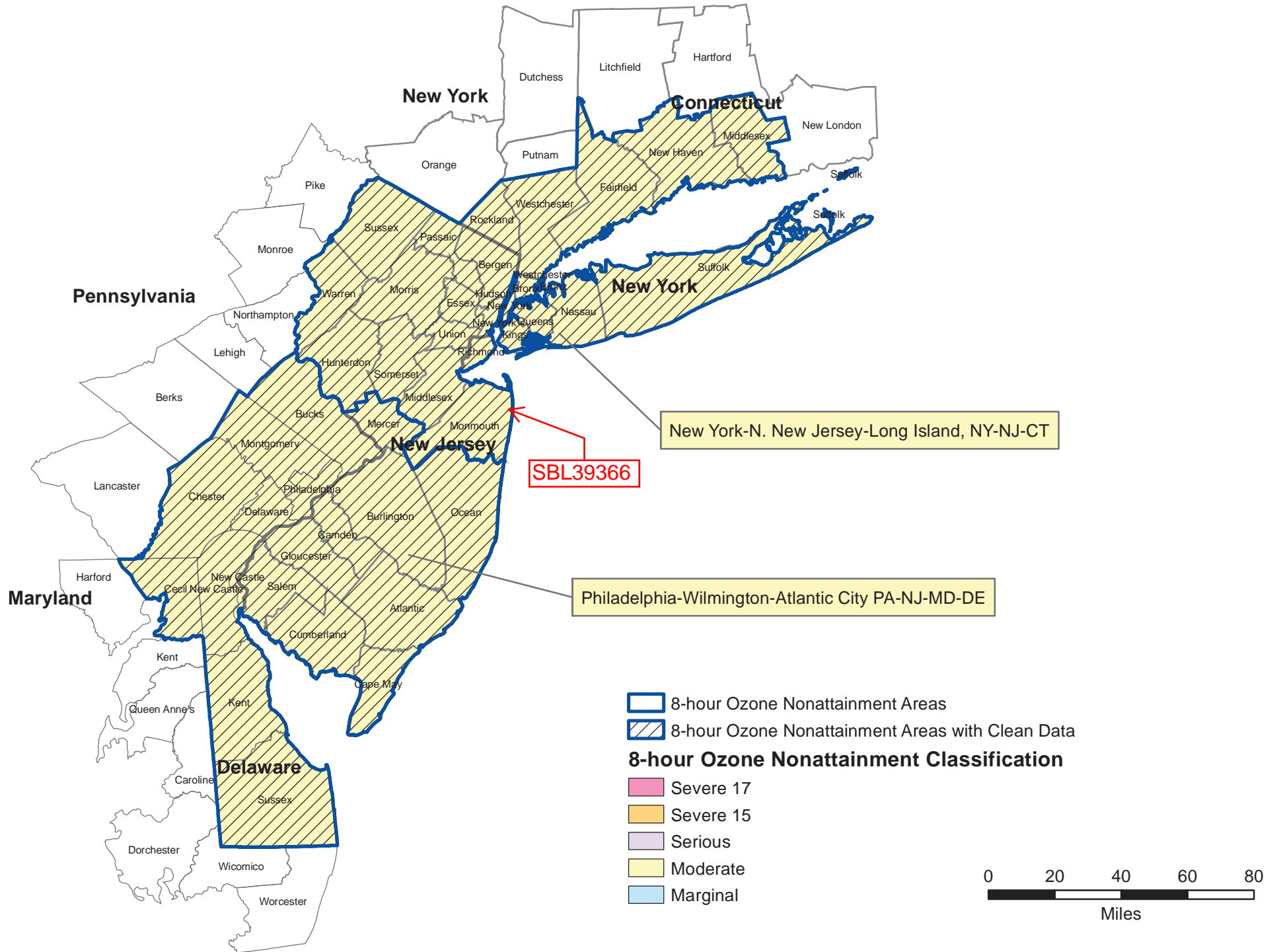
Guam - Piti and Tanguisson Counties are designated nonattainment for the SO₂ NAAQS

* The National Ambient Air Quality Standards (NAAQS) are health standards for Carbon Monoxide, Lead (1978 and 2008), Nitrogen Dioxide, 8-hour Ozone (1997 and 2008), Particulate Matter (PM-10 and PM-2.5 (1997 and 2006)), and Sulfur Dioxide.(1971 and 2010)

** Included in the counts are counties designated for NAAQS and revised NAAQS pollutants. 1-hour Ozone is excluded. Partial counties, those with part of the county designated nonattainment and part attainment, are shown as full counties on the map.

New Jersey 8-hour Ozone Nonattainment Areas (1997 Standard)

7/02/2014



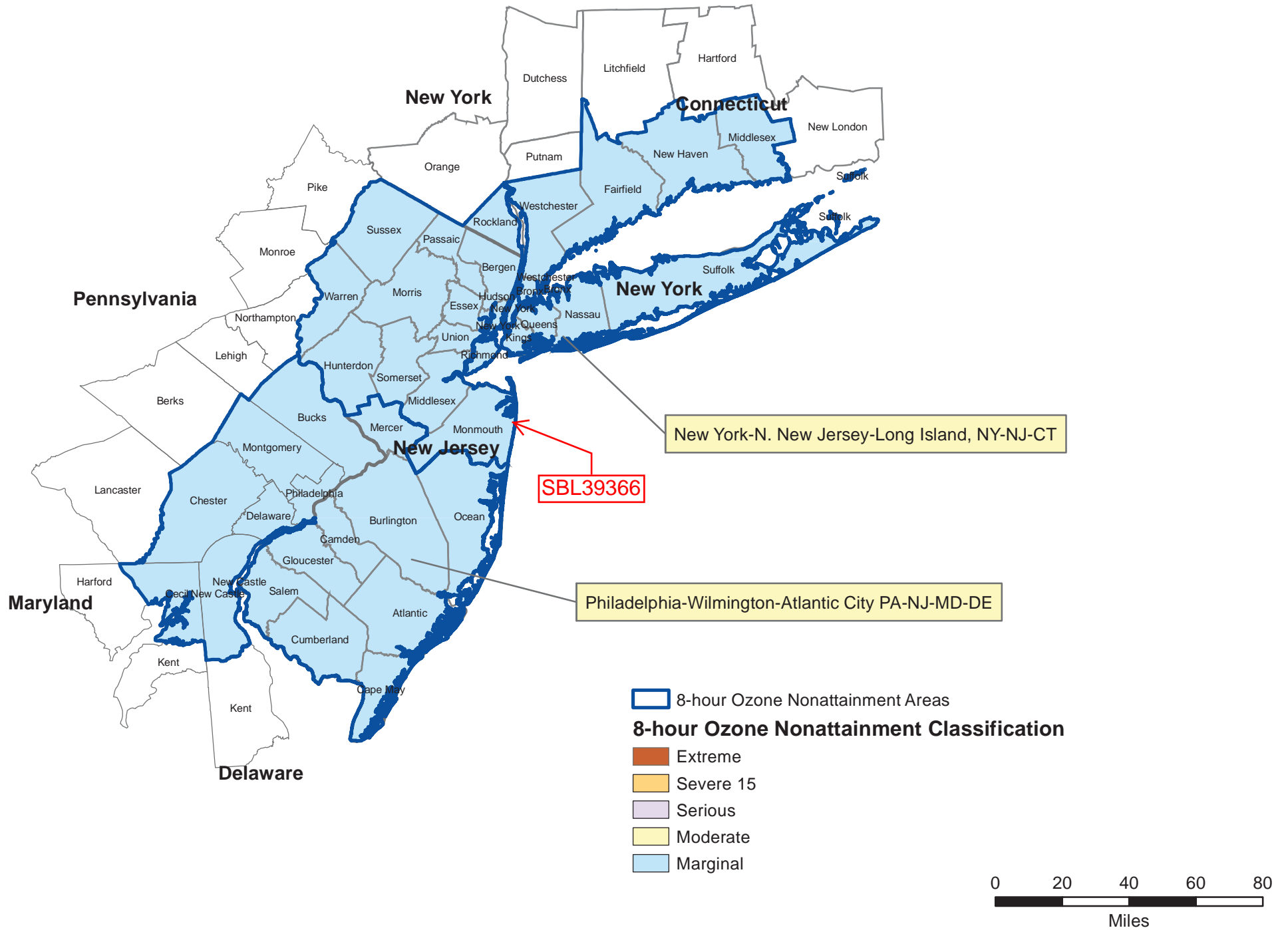
SBL39366

New York-N. New Jersey-Long Island, NY-NJ-CT

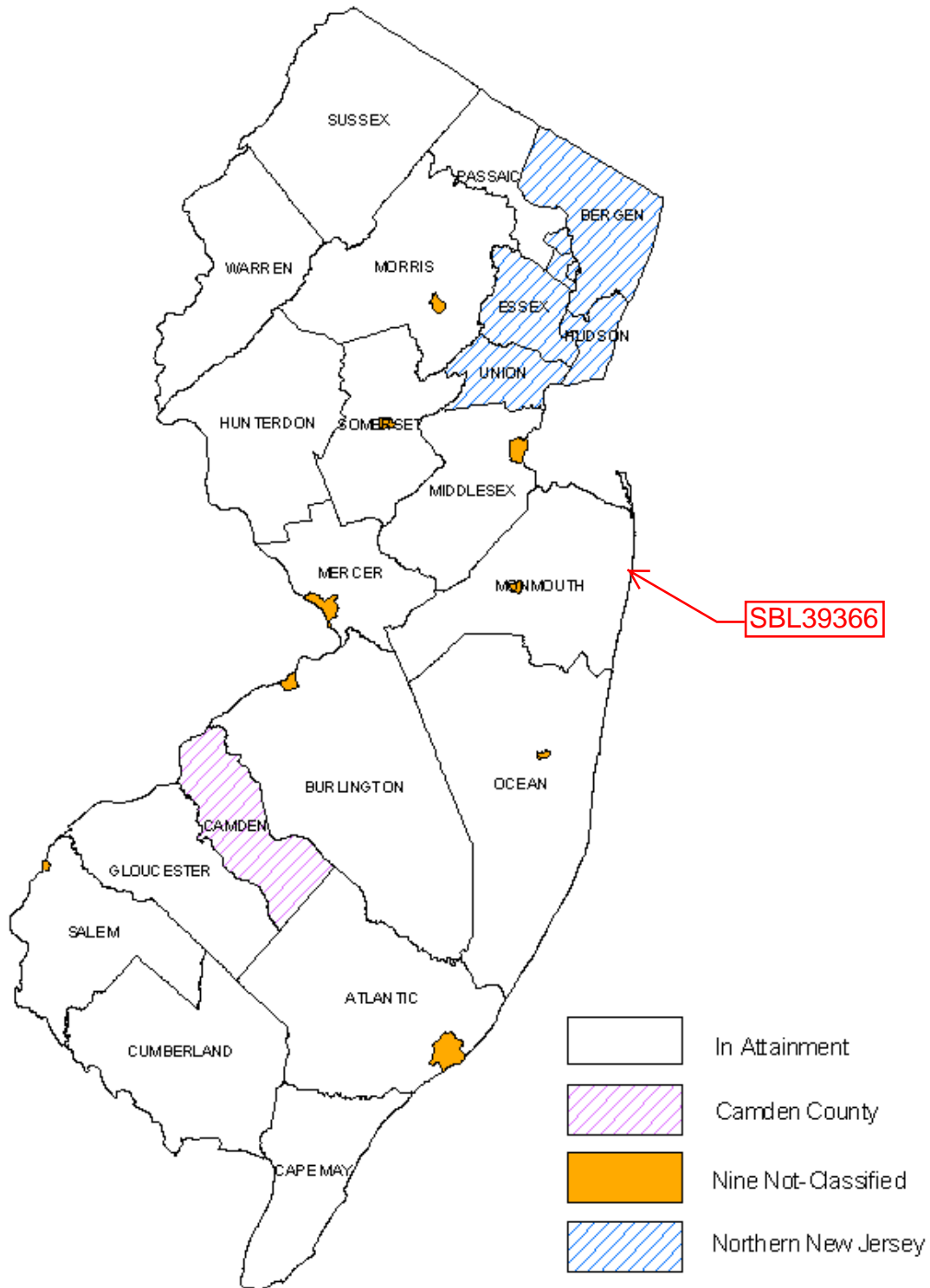
Philadelphia-Wilmington-Atlantic City PA-NJ-MD-DE

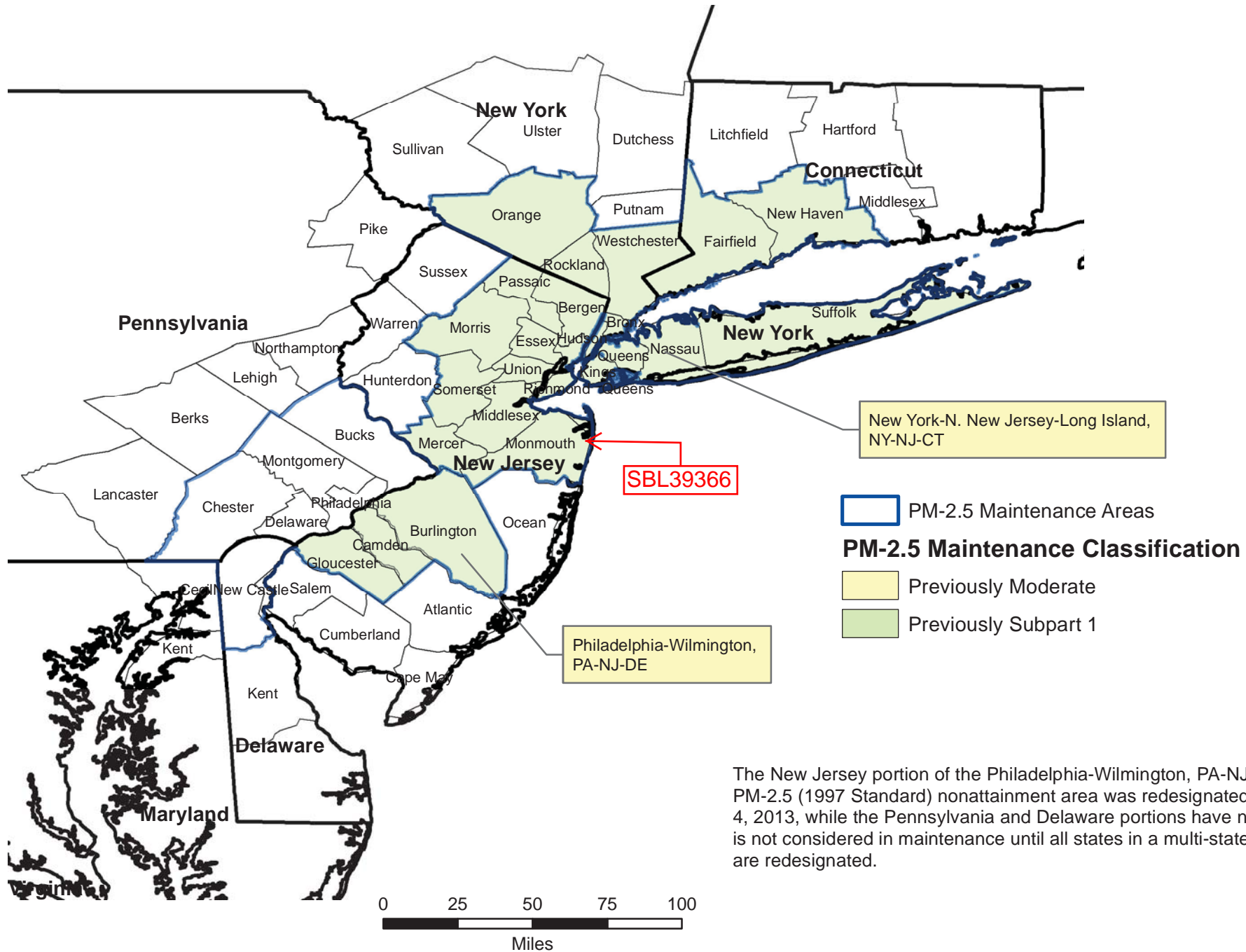
New Jersey 8-hour Ozone Nonattainment Areas (2008 Standard)

7/02/2014



New Jersey Carbon Monoxide (CO) Maintenance Areas

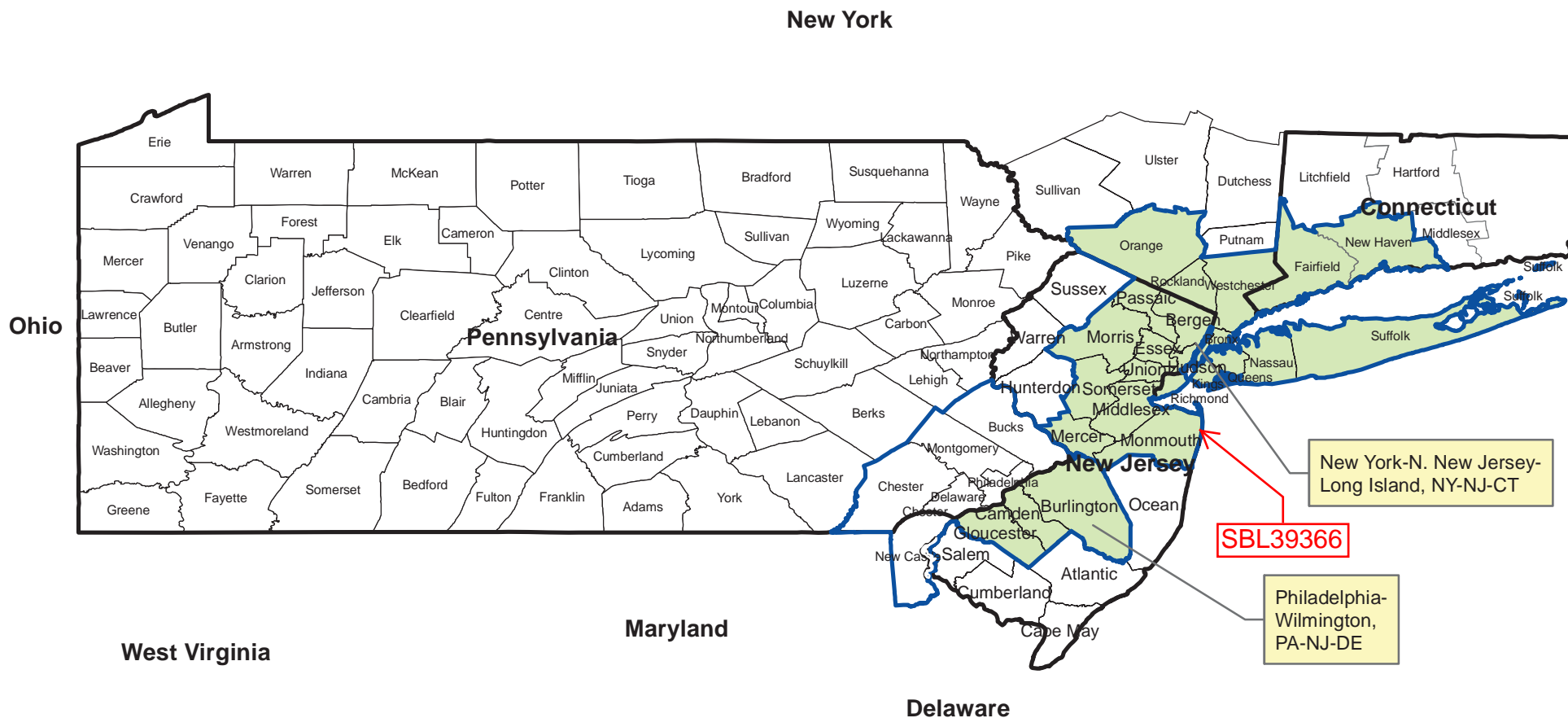




The New Jersey portion of the Philadelphia-Wilmington, PA-NJ-DE PM-2.5 (1997 Standard) nonattainment area was redesignated on September 4, 2013, while the Pennsylvania and Delaware portions have not. The entire area is not considered in maintenance until all states in a multi-state area are redesignated.

Pennsylvania, New York, New Jersey, Connecticut, Delaware PM-2.5 Maintenance Areas (2006 Standard)

7/02/2014



The New Jersey portion of the Philadelphia-Wilmington, PA-NJ-DE PM-2.5 (2006 Standard) nonattainment area was redesignated on September 4, 2013, while the Pennsylvania and Delaware portions have not. The entire area is not considered in maintenance until all states in a multi-state area are redesignated.



- PM-2.5 Maintenance Areas
- PM-2.5 Maintenance Classification**
- Previously Moderate
- Previously Subpart 1