



Demographic and Income Profile

Monmouth County, NJ
 Monmouth County, NJ (34025)
 Geography: County

Summary	Census 2010	2013	2018
Population	630,380	633,415	636,512
Households	233,983	233,642	235,392
Families	163,389	162,753	163,440
Average Household Size	2.66	2.68	2.67
Owner Occupied Housing Units	175,157	170,165	173,674
Renter Occupied Housing Units	58,826	63,477	61,718
Median Age	41.3	42.1	42.8

Trends: 2013 - 2018 Annual Rate	Area	State	National
Population	0.10%	0.32%	0.71%
Households	0.15%	0.33%	0.74%
Families	0.08%	0.26%	0.63%
Owner HHs	0.41%	0.60%	0.94%
Median Household Income	2.65%	3.25%	3.03%

Households by Income	2013		2018	
	Number	Percent	Number	Percent
<\$15,000	16,584	7.1%	15,474	6.6%
\$15,000 - \$24,999	14,477	6.2%	11,438	4.9%
\$25,000 - \$34,999	16,968	7.3%	11,749	5.0%
\$35,000 - \$49,999	25,211	10.8%	21,726	9.2%
\$50,000 - \$74,999	33,094	14.2%	29,819	12.7%
\$75,000 - \$99,999	27,216	11.6%	33,064	14.0%
\$100,000 - \$149,999	46,810	20.0%	48,960	20.8%
\$150,000 - \$199,999	25,121	10.8%	30,604	13.0%
\$200,000+	28,157	12.1%	32,554	13.8%

Median Household Income	\$83,120	\$94,740
Average Household Income	\$109,436	\$129,627
Per Capita Income	\$40,624	\$48,194

Population by Age	Census 2010		2013		2018	
	Number	Percent	Number	Percent	Number	Percent
0 - 4	34,755	5.5%	33,110	5.2%	33,104	5.2%
5 - 9	41,128	6.5%	39,246	6.2%	37,954	6.0%
10 - 14	45,551	7.2%	44,994	7.1%	43,720	6.9%
15 - 19	44,044	7.0%	42,817	6.8%	40,892	6.4%
20 - 24	34,185	5.4%	35,857	5.7%	32,437	5.1%
25 - 34	64,860	10.3%	67,921	10.7%	70,601	11.1%
35 - 44	86,499	13.7%	78,635	12.4%	76,368	12.0%
45 - 54	110,979	17.6%	105,630	16.7%	94,413	14.8%
55 - 64	81,688	13.0%	89,918	14.2%	96,741	15.2%
65 - 74	44,342	7.0%	51,319	8.1%	62,576	9.8%
75 - 84	28,598	4.5%	29,050	4.6%	32,035	5.0%
85+	13,751	2.2%	14,918	2.4%	15,671	2.5%

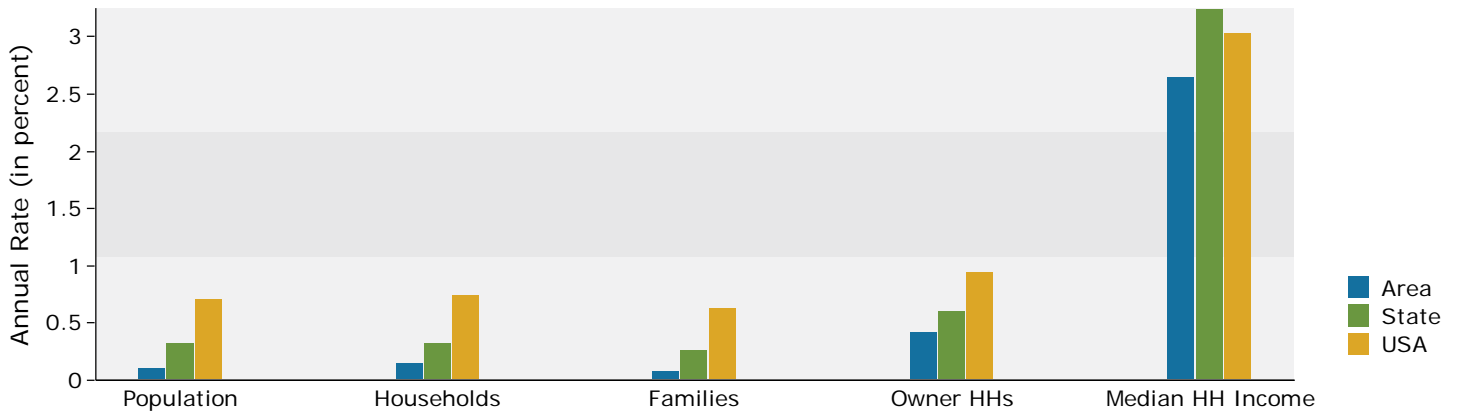
Race and Ethnicity	Census 2010		2013		2018	
	Number	Percent	Number	Percent	Number	Percent
White Alone	520,716	82.6%	518,519	81.9%	513,372	80.7%
Black Alone	46,443	7.4%	46,876	7.4%	46,808	7.4%
American Indian Alone	1,211	0.2%	1,347	0.2%	1,587	0.2%
Asian Alone	31,258	5.0%	32,849	5.2%	35,494	5.6%
Pacific Islander Alone	211	0.0%	234	0.0%	260	0.0%
Some Other Race Alone	18,187	2.9%	20,303	3.2%	24,290	3.8%
Two or More Races	12,354	2.0%	13,287	2.1%	14,701	2.3%
Hispanic Origin (Any Race)	60,939	9.7%	67,640	10.7%	79,757	12.5%

Data Note: Income is expressed in current dollars.

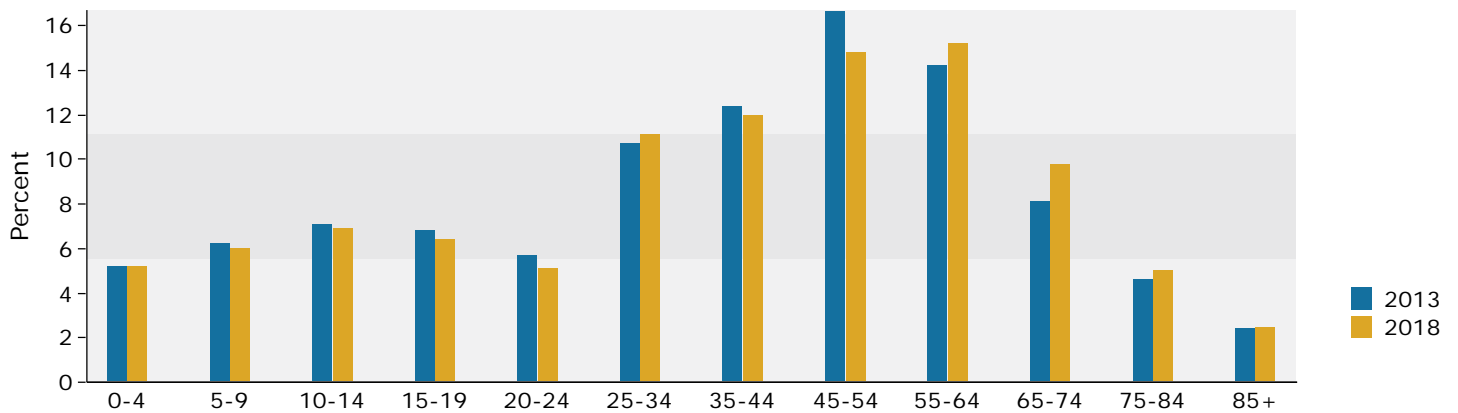
Source: U.S. Census Bureau, Census 2010 Summary File 1. Esri forecasts for 2013 and 2018.

Monmouth County, NJ
 Monmouth County, NJ (34025)
 Geography: County

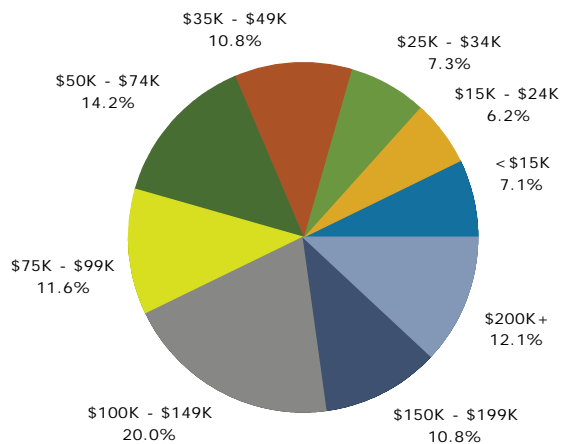
Trends 2013-2018



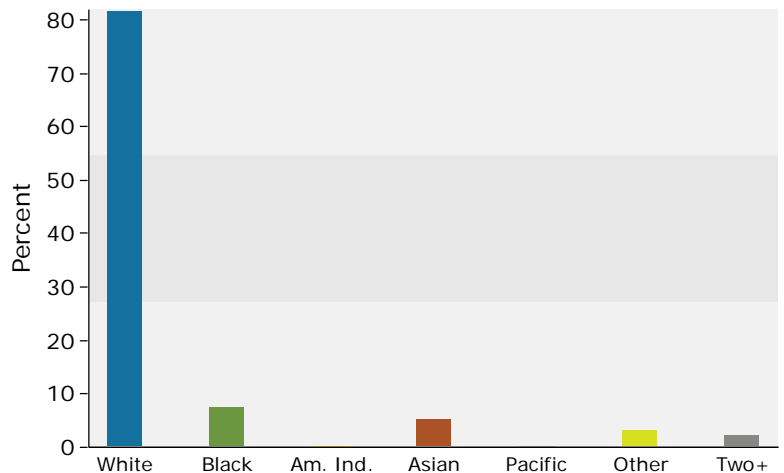
Population by Age



2013 Household Income



2013 Population by Race



2013 Percent Hispanic Origin: 10.7%

Source: U.S. Census Bureau, Census 2010 Summary File 1. Esri forecasts for 2013 and 2018.

20.6%

3.4%

