

NJDEP HUD Environmental Review Tool

New Jersey Dept of Environmental Protection - HUD Environmental Review Tool
 Floodplain Management - FEMA Preliminary FIRM

Application ID#:

SRP0043851

PAMS PIN:

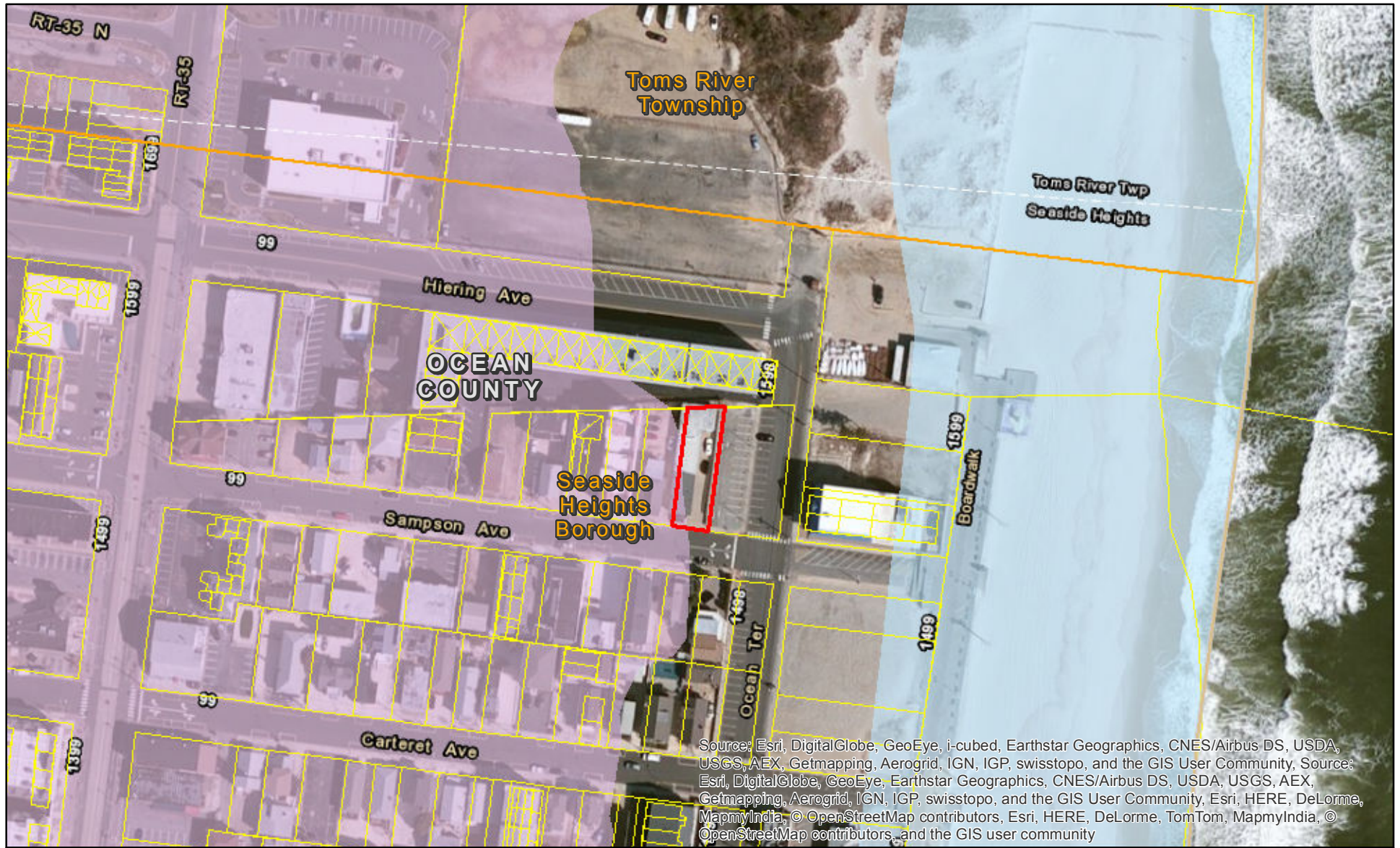
1527_35_7

Address:

20 Sampson Ave

Municipality:

Seaside Heights Boro



Source: Esri, DigitalGlobe, GeoEye, i-cubed, Earthstar Geographics, CNES/Airbus DS, USDA, USGS, AEX, Getmapping, Aerogrid, IGN, IGP, swisstopo, and the GIS User Community, Source: Esri, DigitalGlobe, GeoEye, Earthstar Geographics, CNES/Airbus DS, USDA, USGS, AEX, Getmapping, Aerogrid, IGN, IGP, swisstopo, and the GIS User Community, Esri, HERE, DeLorme, MapmyIndia, © OpenStreetMap contributors, Esri, HERE, DeLorme, TomTom, MapmyIndia, © OpenStreetMap contributors, and the GIS user community

- Proposed Action Site
- HUD Review Parcels
- Floodways

- FEMA Preliminary FIRMs**
- A
 - V

1:2,400

1 inch = 200 feet

