



Child Protection and Permanency

Monthly Screening and Investigation Report October 2015

Allison Blake, Ph.D., L.S.W.
Commissioner

November 13, 2015



Table of Contents

Table 1: NJ State Central Registry Activity: Monthly Child Abuse and Neglect Hotline Calls, Intakes and Assignments to Child Protection & Permanency (CP&P) Offices

Chart 1: CP&P Annual Trends in Child Protection Services (CPS) Reports and Child Welfare Services (CWS) Referrals

Table 2: Assignments to CP&P Offices: CPS Reports and CWS Referrals

Table 3: Source of CPS Reports and CWS Referrals

Table 4: Monthly Count of CPS Reports and CWS Referrals Assigned to Counties

Table 5: Monthly Count of CPS Reports and CWS Referrals Assigned to CP&P Local Offices

Table 1: NJ State Central Registry Activity: Monthly Child Abuse and Neglect Hotline Calls, Intakes and Assignments to CP&P Offices^{1,2,7}

2014 - 2015	Hotline Call Activity				Intakes Recorded in NJ SPIRIT ^{6,8}												Assignments to CP&P Offices				
	Total Calls to SCR ³	Abandon Calls ⁴	Average Time to Answer (seconds)	Resulting NJS Intakes ⁵	CPS Reports		CWS Referrals		No Action Required (NAR)		Related Information (RI)		Information & Referral (I&R)		Information Only (IO)		CPS Reports		CWS Referrals		Total
					n	%	n	%	n	%	n	%	n	%	n	%	n	%	n	%	
October 2014	15,268	435	26	16,868	5,510	32.7%	1,584	9.4%	555	3.3%	4,259	25.2%	1,946	11.5%	3,014	17.9%	5,509	77.6%	1,586	22.4%	7,095
November 2014	12,649	391	28	13,938	4,254	30.5%	1,416	10.2%	297	2.1%	3,895	27.9%	1,473	10.6%	2,603	18.7%	4,254	75.0%	1,416	25.0%	5,670
December 2014	13,289	468	29	14,588	4,511	30.9%	1,449	9.9%	303	2.1%	3,888	26.7%	1,620	11.1%	2,817	19.3%	4,509	75.7%	1,447	24.3%	5,956
January 2015	13,991	761	34	15,030	4,549	30.3%	1,390	9.2%	387	2.6%	3,939	26.2%	1,591	10.6%	3,174	21.1%	4,549	76.6%	1,391	23.4%	5,940
February 2015	12,881	537	35	14,010	4,573	32.6%	1,342	9.6%	418	3.0%	3,494	24.9%	1,516	10.8%	2,667	19.0%	4,574	77.3%	1,345	22.7%	5,919
March 2015	14,805	486	30	16,174	5,187	32.1%	1,580	9.8%	363	2.2%	4,021	24.9%	1,811	11.2%	3,212	19.9%	5,187	76.7%	1,580	23.3%	6,767
April 2015	13,698	409	26	15,107	4,967	32.9%	1,381	9.1%	366	2.4%	3,900	25.8%	1,615	10.7%	2,878	19.1%	4,967	78.2%	1,384	21.8%	6,351
May 2015	15,466	583	39	16,769	5,457	32.5%	1,560	9.3%	340	2.0%	4,437	26.5%	1,874	11.2%	3,101	18.5%	5,457	77.8%	1,561	22.2%	7,018
June 2015	13,760	405	29	15,189	4,887	32.2%	1,436	9.5%	373	2.5%	3,981	26.2%	1,659	10.9%	2,853	18.8%	4,887	77.3%	1,436	22.7%	6,323
July 2015	12,132	380	20	13,624	4,140	30.4%	1,273	9.3%	442	3.2%	3,569	26.2%	1,416	10.4%	2,784	20.4%	4,140	76.5%	1,273	23.5%	5,413
August 2015	12,553	652	26	13,691	3,978	29.1%	1,257	9.2%	401	2.9%	3,713	27.1%	1,384	10.1%	2,958	21.6%	3,978	76.0%	1,256	24.0%	5,234
September 2015	13,335	351	24	14,955	4,776	31.9%	1,494	10.0%	467	3.1%	3,908	26.1%	1,601	10.7%	2,709	18.1%	4,776	76.2%	1,495	23.8%	6,271
October 2015	14,304	315	18	15,821	5,139	32.5%	1,620	10.2%	332	2.1%	4,073	25.7%	1,834	11.6%	2,823	17.8%	5,139	76.0%	1,619	24.0%	6,758
Monthly Average	13,702	475	28	15,059	4,764	31.6%	1,445	9.6%	388	2.6%	3,929	26.1%	1,642	10.9%	2,892	19.2%	4,764	76.7%	1,445	23.3%	6,209
Overall Total	178,131	6,173		195,764	61,928		18,782		5,044		51,077		21,340		37,593		61,926	76.7%	18,789	23.3%	80,715

¹ Comes from three distinct sources: (1) the Automatic Call Distribution (ACD) phone system; which keeps a count of the number of calls and call routing; (2) Monthly NJSpirit Intakes; which record decision making on calls received by hotline screeners, and (3) NJSpirit extracts of assigned CWS Referrals and CPS Reports.

² The number of Intakes, CPS Reports, and CWS Referrals are based on an extract from NJSpirit. Data extracted by the Office of Research, Evaluation, and Reporting on **November 9, 2015** includes all Intakes, CPS Reports, and CWS Referrals received from **October 1, 2015 through October 31, 2015**.

³ The number calls received through the ACD System that were directed to a screener from any call-in phone number.

⁴ The number of calls received through the ACD System that are abandoned either while waiting in queue or while ringing.

⁵ The number of Intakes entered in NJSpirit from the number of calls received.

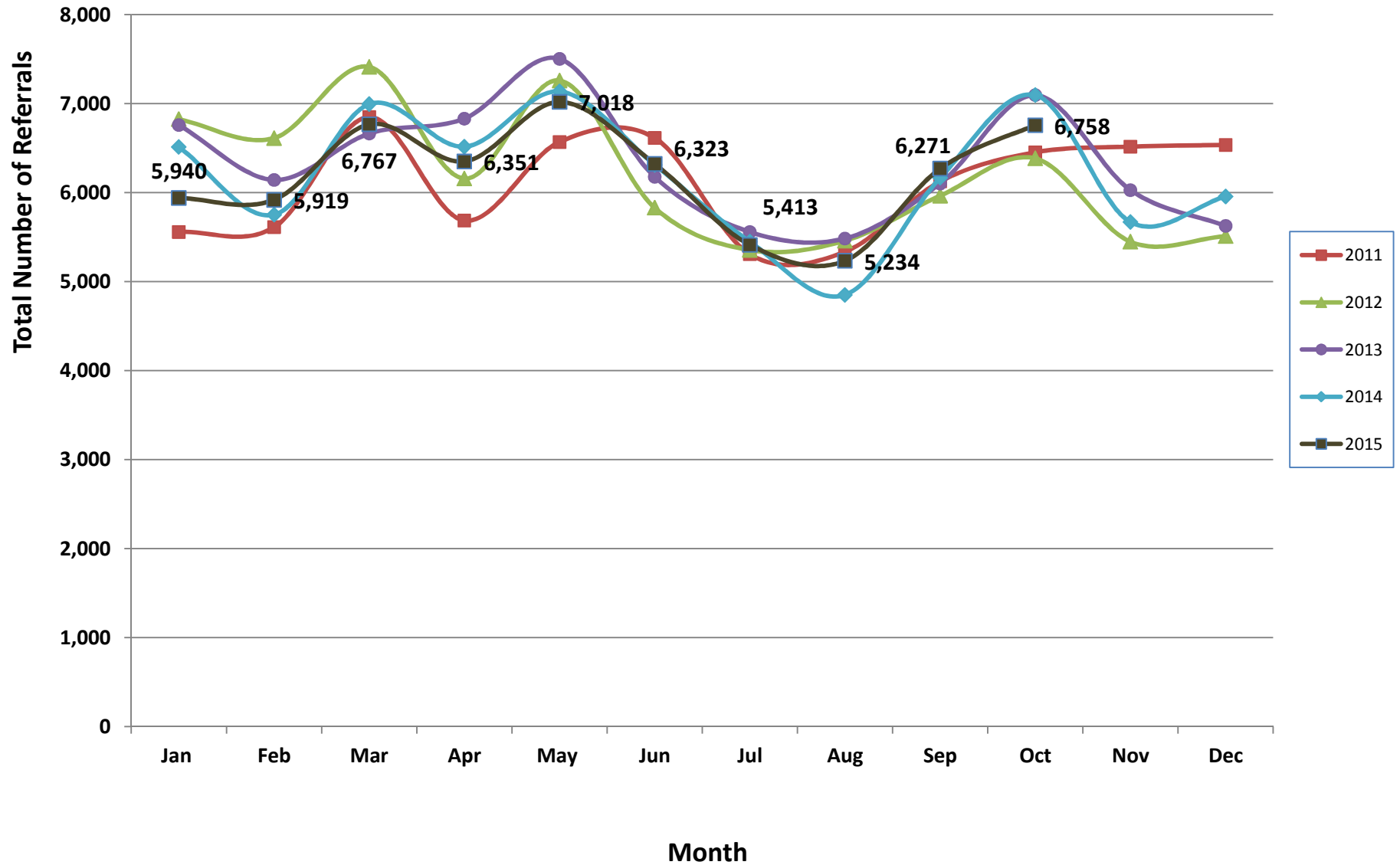
⁶ The number of Intakes recorded in NJSpirit, by type of Intake. There is not a one-to-one relationship between an ACD call and an Intake; multiple calls to State Central Registry (SCR) may result in a single Intake, or one call may result in multiple Intakes.

⁷ Intake: The process of documenting: a report of alleged abuse or neglect of a child (CPS); a request for services on behalf of a child, or a referral of a child for services (CWS); a call in which the caller provides additional or clarifying information about a current service case or active investigation (RI); informing a caller of, or referring a caller to, services available from other private or public sources (I&R); a call that requires no action by CP&P (NAR); or a response to a simple inquiry (IO).

⁸ NJ SPIRIT: NJ Statewide Protection Investigation and Reporting Information Tool case management system



CP&P Annual Trends in CPS Reports and CWS Referrals



The data contained in this report is considered preliminary and as a result, these figures might be different than the final reported figures. The data is produced for continuous quality improvement.

Table 2: Assignments to CP&P Offices: CPS Reports and CWS Referrals¹

Intake Date ³		CPS Reports ²	CWS Referrals ²	Total Assignments ²
2010	Jan 2010	5,154	963	6,117
	Feb 2010	4,446	804	5,250
	Mar 2010	6,314	1,147	7,461
	Apr 2010	5,465	1,040	6,505
	May 2010	5,797	1,177	6,974
	Jun 2010	5,734	1,157	6,891
	Jul 2010	4,270	1,017	5,287
	Aug 2010	4,110	1,028	5,138
	Sep 2010	4,922	1,012	5,934
	Oct 2010	5,105	1,136	6,241
	Nov 2010	4,842	1,028	5,870
	Dec 2010	4,472	909	5,381
	Total	60,631	12,418	73,049
2011	Jan 2011	4,616	942	5,558
	Feb 2011	4,672	939	5,611
	Mar 2011	5,701	1,148	6,849
	Apr 2011	4,682	1,005	5,687
	May 2011	5,362	1,207	6,569
	Jun 2011	5,299	1,315	6,614
	Jul 2011	4,200	1,108	5,308
	Aug 2011	4,170	1,166	5,336
	Sep 2011	4,872	1,253	6,125
	Oct 2011	5,322	1,132	6,454
	Nov 2011	5,220	1,296	6,516
	Dec 2011	5,363	1,173	6,536
	Total	59,479	13,684	73,163
2012	Jan 2012	5,530	1,294	6,824
	Feb 2012	5,358	1,255	6,613
	Mar 2012	5,985	1,428	7,413
	Apr 2012	4,899	1,259	6,158
	May 2012	5,874	1,385	7,259
	Jun 2012	4,640	1,190	5,830
	Jul 2012	4,254	1,101	5,355
	Aug 2012	4,325	1,135	5,460
	Sep 2012	4,769	1,196	5,965
	Oct 2012	5,178	1,207	6,385
	Nov 2012	4,310	1,138	5,448
	Dec 2012	4,394	1,116	5,510
	Total	59,516	14,704	74,220
2013	Jan 2013	5,464	1,296	6,760
	Feb 2013	4,966	1,177	6,143
	Mar 2013	5,355	1,309	6,664
	Apr 2013	5,430	1,402	6,832
	May 2013	5,993	1,510	7,503
	Jun 2013	4,947	1,230	6,177
	Jul 2013	4,330	1,228	5,558
	Aug 2013	4,330	1,155	5,485
	Sep 2013	4,851	1,251	6,102
	Oct 2013	5,614	1,481	7,095
	Nov 2013	4,694	1,334	6,028
	Dec 2013	4,397	1,229	5,626
	Total	60,371	15,602	75,973

Table 2: Assignments to CP&P Offices: CPS Reports and CWS Referrals¹

Intake Date ³		CPS Reports ²	CWS Referrals ²	Total Assignments ²
2014	Jan 2014	5,097	1,416	6,513
	Feb 2014	4,457	1,295	5,752
	Mar 2014	5,408	1,586	6,994
	Apr 2014	5,049	1,467	6,516
	May 2014	5,501	1,635	7,136
	Jun 2014	4,796	1,517	6,313
	Jul 2014	4,202	1,247	5,449
	Aug 2014	3,629	1,222	4,851
	Sep 2014	4,668	1,498	6,166
	Oct 2014	5,509	1,586	7,095
	Nov 2014	4,254	1,416	5,670
	Dec 2014	4,509	1,447	5,956
	Total	57,079	17,332	74,411
2015	Jan 2015	4,549	1,391	5,940
	Feb 2015	4,574	1,345	5,919
	Mar 2015	5,187	1,580	6,767
	Apr 2015	4,967	1,384	6,351
	May 2015	5,457	1,561	7,018
	Jun 2015	4,887	1,436	6,323
	Jul 2015	4,140	1,273	5,413
	August 2015	3,978	1,256	5,234
	September 2015	4,776	1,495	6,271
	October 2015	5,139	1,619	6,758
	Total	47,654	14,340	61,994
Grand Total		344,730	88,080	432,810

¹Source of Data: NJ SPIRIT

²A CPS Report or a CWS Referral may include multiple children in a family, with one or more allegation or request for services. In these cases, each CPS Report or CWS Referral is counted once - the CPS Report or the CWS Referral is the unit of analysis rather than the child.

³Prior to January 2014, the number of CPS Reports and CWS Referrals was based on the type of assignment of the CPS Report or CWS Referral. Beginning in January 2014, the number of CPS Reports and CWS Referrals is based on the number of CPS Reports and CWS Referrals received.

Table 3: Source of CPS Reports and CWS Referrals

	Source	Oct 2014	Nov 2014	Dec 2014	Jan 2015	Feb 2015	Mar 2015	Apr 2015	May 2015	Jun 2015	Jul 2015	Aug 2015	Sep 2015	October 2015	13 Month Total		
CPS Reports and CWS Referrals	School Staff	1,935	1,395	1,481	1,504	1,629	1,894	1,487	1,868	1,166	183	75	1,123	1,763	26%	17,503	22%
	Healthcare Provider	824	735	774	701	720	825	861	812	808	816	832	780	825	12%	10,313	13%
	Law Enforcement	898	835	820	870	783	933	925	1056	1093	1082	1,010	1,040	1,003	15%	12,348	15%
	Government Agency	474	350	402	362	377	465	445	370	422	495	449	437	426	6%	5,474	7%
	Parent	603	517	520	510	506	539	493	578	581	594	592	589	518	8%	7,140	9%
	Relative/Friend/Neighbor	568	418	406	468	393	491	484	540	546	604	595	592	526	8%	6,631	8%
	Anonymous	772	614	659	612	607	687	641	802	725	611	622	739	710	11%	8,801	11%
	CP&P	113	94	113	109	120	110	117	103	125	119	110	123	137	2%	1,493	2%
	Court/Legal	129	78	114	118	95	108	116	128	148	155	113	115	119	2%	1,536	2%
	Community Group/Individual	270	209	211	233	263	260	295	266	232	280	297	243	306	5%	3,365	4%
	Facility Staff (incl Correctional Facility)	92	82	89	107	79	71	106	76	89	92	105	78	83	1%	1,149	1%
	Child (Self)	47	42	46	40	35	39	37	49	41	44	67	47	34	1%	568	1%
	Other	354	293	308	291	298	328	332	353	330	327	344	348	288	4%	4,194	5%
	Daycare/Babysitter	16	8	13	15	14	17	12	17	17	11	23	17	20	0%	200	0%
	Total	7,095	5,670	5,956	5,940	5,919	6,767	6,351	7,018	6,323	5,413	5,234	6,271	6,758		80,715	

Table 4: Monthly Count of CPS Reports and CWS Referrals Assigned to Counties

County														Average # of Assignments the Last 13 Months	Sep 15 to Oct 15 Numerical Difference
	Oct 2014	Nov 2014	Dec 2014	Jan 2015	Feb 2015	Mar 2015	Apr 2015	May 2015	Jun 2015	Jul 2015	Aug 2015	Sep 2015	October 2015		
Atlantic	292	234	245	233	210	269	277	275	239	218	227	295	267	252	-28
Bergen	392	328	323	323	324	386	335	382	296	284	257	345	411	337	66
Burlington	335	238	277	269	305	285	319	322	274	263	284	307	303	291	-4
Camden	594	502	464	487	505	534	506	551	552	449	438	516	609	516	93
Cape May	87	59	71	82	68	93	85	80	69	78	86	92	112	82	20
Cumberland	224	189	207	213	201	253	217	249	217	173	152	231	215	211	-16
Essex	725	579	622	617	597	769	699	779	642	583	565	635	675	653	40
Gloucester	300	228	232	238	223	276	288	244	259	258	255	247	300	258	53
Hudson	532	349	398	414	396	442	382	546	471	352	325	399	451	420	52
Hunterdon	47	33	65	30	52	45	50	51	47	48	38	58	52	47	-6
Mercer	294	246	230	244	209	264	244	249	262	198	226	263	324	250	61
Middlesex	458	341	418	424	464	479	418	471	423	335	317	400	466	416	66
Monmouth	413	346	354	325	373	440	374	378	346	301	301	364	361	360	-3
Morris	237	227	183	237	190	224	208	246	233	186	175	250	239	218	-11
Ocean	456	387	381	374	364	398	402	418	388	376	369	376	383	390	7
Passaic	427	382	417	361	387	443	389	534	412	317	345	422	461	407	39
Salem	96	50	66	87	60	71	96	105	81	68	53	102	72	77	-30
Somerset	152	134	132	126	131	153	154	178	163	158	128	155	153	147	-2
Sussex	84	96	91	86	85	109	104	97	112	103	84	89	104	96	15
Union	354	311	288	322	278	360	307	299	305	228	215	276	304	296	28
Warren	113	87	102	97	119	92	101	117	102	89	94	101	107	102	6
County Subtotals	6,612	5,346	5,566	5,589	5,541	6,385	5,955	6,571	5,893	5,065	4,934	5,923	6,369	5,827	446
Central Region IAIU	70	54	61	48	50	50	51	54	54	24	41	53	52	51	-1
Metro Region IAIU	70	45	49	53	58	67	54	70	66	56	30	36	50	54	14
Northern Region IAIU	80	47	67	62	61	73	70	80	65	61	43	45	66	63	21
Southern Region IAIU	85	59	89	60	68	68	78	97	88	63	59	60	83	74	23
IAIU Subtotals	305	205	266	223	237	258	253	301	273	204	173	194	251	242	57
Unable to Determine¹	174	117	123	127	138	118	141	144	153	142	124	153	136	138	-17
Other Offices	4	2	1	1	3	6	2	2	4	2	3	1	2	3	1
Grand Total	7,095	5,670	5,956	5,940	5,919	6,767	6,351	7,018	6,323	5,413	5,234	6,271	6,758	6,209	487

¹CPS Reports or CWS Referrals not assigned to an office through the Assignment Designee, but were assigned to an office for an assessment or investigation.



Table 5: Monthly Count of CPS Reports and CWS Referrals Assigned to CP&P Local Offices

County	Local Office	Type of Referral														Total
			Oct 2014	Nov 2014	Dec 2014	Jan 2015	Feb 2015	Mar 2015	Apr 2015	May 2015	Jun 2015	Jul 2015	Aug 2015	Sep 2015	Oct 2015	
ATLANTIC	Atlantic East	CPS	125	100	120	106	77	116	134	121	115	100	107	134	115	1,470
		CWS	35	36	24	29	26	32	32	38	24	30	26	35	30	397
		Total	160	136	144	135	103	148	166	159	139	130	133	169	145	1,867
	Atlantic West	CPS	103	75	77	76	85	101	86	96	81	72	77	94	101	1,124
		CWS	29	23	24	22	22	20	25	20	19	16	17	32	21	290
		Total	132	98	101	98	107	121	111	116	100	88	94	126	122	1,414
	County Totals	CPS	228	175	197	182	162	217	220	217	196	172	184	228	216	2,594
		CWS	64	59	48	51	48	52	57	58	43	46	43	67	51	687
		Total	292	234	245	233	210	269	277	275	239	218	227	295	267	3,281
BERGEN	Bergen Central	CPS	111	109	94	97	94	103	110	123	102	83	72	98	117	1,313
		CWS	51	49	39	39	32	37	36	34	32	29	29	36	50	493
		Total	162	158	133	136	126	140	146	157	134	112	101	134	167	1,806
	Bergen South	CPS	181	124	136	144	144	183	133	175	120	127	106	157	177	1,907
		CWS	49	46	54	43	54	63	56	50	42	45	50	54	67	673
		Total	230	170	190	187	198	246	189	225	162	172	156	211	244	2,580
	County Totals	CPS	292	233	230	241	238	286	243	298	222	210	178	255	294	3,220
		CWS	100	95	93	82	86	100	92	84	74	74	79	90	117	1,166
		Total	392	328	323	323	324	386	335	382	296	284	257	345	411	4,386
BURLINGTON	Burlington East	CPS	115	107	110	110	116	105	138	125	99	97	110	110	121	1,463
		CWS	38	25	30	25	33	29	28	37	26	38	36	36	31	412
		Total	153	132	140	135	149	134	166	162	125	135	146	146	152	1,875
	Burlington West	CPS	145	80	100	104	121	119	117	122	115	96	97	120	119	1,455
		CWS	37	26	37	30	35	32	36	38	34	32	41	41	32	451
		Total	182	106	137	134	156	151	153	160	149	128	138	161	151	1,906
	County Totals	CPS	260	187	210	214	237	224	255	247	214	193	207	230	240	2,918
		CWS	75	51	67	55	68	61	64	75	60	70	77	77	63	863
		Total	335	238	277	269	305	285	319	322	274	263	284	307	303	3,781
CAMDEN	Camden Central	CPS	151	100	103	123	123	127	115	122	121	105	93	116	148	1,547
		CWS	26	28	23	35	28	23	38	29	27	29	25	36	38	385
		Total	177	128	126	158	151	150	153	151	148	134	118	152	186	1,932
	Camden East	CPS	116	91	93	74	93	89	102	119	125	81	105	109	123	1,320
		CWS	37	39	24	31	19	30	31	30	30	30	28	21	21	371
		Total	153	130	117	105	112	119	133	149	155	111	133	130	144	1,691
	Camden North	CPS	122	105	73	89	85	106	89	101	116	82	77	95	120	1,260
		CWS	23	28	33	31	29	33	31	33	36	26	24	33	40	400
		Total	145	133	106	120	114	139	120	134	152	108	101	128	160	1,660
	Camden South	CPS	92	88	84	78	96	97	88	92	73	76	66	83	88	1,101
		CWS	27	23	31	26	32	29	12	25	24	20	20	23	31	323
		Total	119	111	115	104	128	126	100	117	97	96	86	106	119	1,424
	County Totals	CPS	481	384	353	364	397	419	394	434	435	344	341	403	479	5,228
		CWS	113	118	111	123	108	115	112	117	117	105	97	113	130	1,479
		Total	594	502	464	487	505	534	506	551	552	449	438	516	609	6,707
CAPE MAY	Cape May	CPS	73	47	54	63	54	78	63	66	57	63	69	72	87	846
		CWS	14	12	17	19	14	15	22	14	12	15	17	20	25	216
		Total	87	59	71	82	68	93	85	80	69	78	86	92	112	1,062
	County Totals	CPS	73	47	54	63	54	78	63	66	57	63	69	72	87	846
		CWS	14	12	17	19	14	15	22	14	12	15	17	20	25	216
		Total	87	59	71	82	68	93	85	80	69	78	86	92	112	1,062
CUMBERLAND	Cumberland East	CPS	69	56	43	51	52	63	50	70	66	33	36	61	42	692
		CWS	17	14	22	16	16	15	12	25	19	6	9	18	26	215
		Total	86	70	65	67	68	78	62	95	85	39	45	79	68	907
	Cumberland West	CPS	102	91	107	121	105	143	117	123	99	108	81	123	116	1,436
		CWS	36	28	35	25	28	32	38	31	33	26	26	29	31	398
		Total	138	119	142	146	133	175	155	154	132	134	107	152	147	1,834
	County Totals	CPS	171	147	150	172	157	206	167	193	165	141	117	184	158	2,128
		CWS	53	42	57	41	44	47	50	56	52	32	35	47	57	613
		Total	224	189	207	213	201	253	217	249	217	173	152	231	215	2,741

Data in this report is preliminary and may differ from any final report. This report is produced to ensure continuous quality improvement throughout DCF.

Table 5: Monthly Count of CPS Reports and CWS Referrals Assigned to CP&P Local Offices

County	Local Office	Type of Referral														Total
			Oct 2014	Nov 2014	Dec 2014	Jan 2015	Feb 2015	Mar 2015	Apr 2015	May 2015	Jun 2015	Jul 2015	Aug 2015	Sep 2015	Oct 2015	
ESSEX	Essex Central	CPS	104	73	77	97	68	92	105	118	81	76	85	80	105	1,161
		CWS	42	36	36	34	31	25	32	36	27	39	41	26	42	447
		Total	146	109	113	131	99	117	137	154	108	115	126	106	147	1,608
	Essex North	CPS	65	61	59	50	48	63	78	75	67	42	40	53	53	754
		CWS	25	20	16	14	23	26	20	20	23	18	17	22	23	267
		Total	90	81	75	64	71	89	98	95	90	60	57	75	76	1,021
	Essex South	CPS	61	48	61	70	70	95	75	71	51	49	49	66	57	823
		CWS	22	30	29	24	26	22	17	16	20	19	16	25	23	289
		Total	83	78	90	94	96	117	92	87	71	68	65	91	80	1,112
	Newark Center City	CPS	90	68	91	75	74	110	90	106	72	61	64	89	83	1,073
		CWS	40	28	24	19	21	33	15	40	27	23	29	29	35	363
		Total	130	96	115	94	95	143	105	146	99	84	93	118	118	1,436
	Newark Northeast	CPS	97	80	68	74	101	107	106	94	108	81	69	101	83	1,169
		CWS	28	25	40	36	27	45	27	34	28	31	26	25	37	409
		Total	125	105	108	110	128	152	133	128	136	112	95	126	120	1,578
	Newark South	CPS	124	80	88	94	81	120	97	127	102	113	94	88	100	1,308
		CWS	27	30	33	30	26	31	37	42	36	31	35	31	34	423
		Total	151	110	121	124	107	151	134	169	138	144	129	119	134	1,731
	County Totals	CPS	541	410	444	460	442	587	551	591	481	422	401	477	481	6,288
		CWS	184	169	178	157	154	182	148	188	161	161	164	158	194	2,198
		Total	725	579	622	617	596	769	699	779	642	583	565	635	675	8,486
GLOUCESTER	Gloucester East	CPS	101	85	85	95	96	110	114	88	85	85	98	98	109	1,249
		CWS	37	39	28	18	20	29	34	18	25	36	34	24	26	368
		Total	138	124	113	113	116	139	148	106	110	121	132	122	135	1,617
	Gloucester West	CPS	126	74	96	96	80	113	115	114	121	118	93	94	133	1,373
		CWS	36	30	23	29	27	24	25	24	28	19	30	31	32	358
		Total	162	104	119	125	107	137	140	138	149	137	123	125	165	1,731
	County Totals	CPS	227	159	181	191	176	223	229	202	206	203	191	192	242	2,622
		CWS	73	69	51	47	47	53	59	42	53	55	64	55	58	726
		Total	300	228	232	238	223	276	288	244	259	258	255	247	300	3,348
HUDSON	Hudson Central	CPS	94	49	56	73	84	90	89	112	88	71	60	62	72	1,000
		CWS	33	31	29	27	25	30	30	22	30	24	30	25	26	362
		Total	127	80	85	100	109	120	119	134	118	95	90	87	98	1,362
	Hudson North	CPS	99	53	74	69	70	73	65	107	96	60	54	91	86	997
		CWS	33	23	26	30	22	29	19	28	27	18	16	22	31	324
		Total	132	76	100	99	92	102	84	135	123	78	70	113	117	1,321
	Hudson South	CPS	95	59	88	77	80	87	70	103	93	79	71	66	93	1,061
		CWS	36	30	17	23	32	31	23	46	29	23	19	31	28	368
		Total	131	89	105	100	112	118	93	149	122	102	90	97	121	1,429
	Hudson West	CPS	113	85	81	86	65	77	71	103	77	57	55	77	82	1,029
		CWS	29	19	27	29	18	25	15	25	31	20	20	25	33	316
		Total	142	104	108	115	83	102	86	128	108	77	75	102	115	1,345
	County Totals	CPS	401	246	299	305	299	327	295	425	354	267	240	296	333	4,087
		CWS	131	103	99	109	97	115	87	121	117	85	85	103	118	1,370
		Total	532	349	398	414	396	442	382	546	471	352	325	399	451	5,457
HUNTERDON	Hunterdon	CPS	38	23	46	19	39	28	33	32	35	27	41	40	433	
		CWS	9	10	19	11	13	17	17	19	15	13	11	17	183	
		Total	47	33	65	30	52	45	50	51	47	48	38	58	616	
	County Totals	CPS	38	23	46	19	39	28	33	32	32	35	27	41	40	433
		CWS	9	10	19	11	13	17	17	19	15	13	11	17	12	183
Total	47	33	65	30	52	45	50	51	47	48	38	58	52	616		
MERCER	Mercer North	CPS	123	96	81	97	78	82	98	94	92	70	82	87	115	1,195
		CWS	28	42	30	30	29	43	23	27	25	29	18	33	40	397
		Total	151	138	111	127	107	125	121	121	117	99	100	120	155	1,592
	Mercer South	CPS	117	88	96	87	75	110	94	96	103	76	107	107	125	1,281
		CWS	26	20	23	30	27	29	29	32	42	23	19	36	44	380
		Total	143	108	119	117	102	139	123	128	145	99	126	143	169	1,661
	County Totals	CPS	240	184	177	184	153	192	192	190	195	146	189	194	240	2,476
CWS		54	62	53	60	56	72	52	59	67	52	37	69	84	777	
Total		294	246	230	244	209	264	244	249	262	198	226	263	324	3,253	



Table 5: Monthly Count of CPS Reports and CWS Referrals Assigned to CP&P Local Offices

County	Local Office	Type of Referral													Total	
			Oct 2014	Nov 2014	Dec 2014	Jan 2015	Feb 2015	Mar 2015	Apr 2015	May 2015	Jun 2015	Jul 2015	Aug 2015	Sep 2015		Oct 2015
MIDDLESEX	Middlesex Central	CPS	90	54	64	77	75	83	85	89	65	52	56	86	86	962
		CWS	24	14	24	27	16	20	21	27	17	25	18	28	27	288
		Total	114	68	88	104	91	103	106	116	82	77	74	114	113	1,250
	Middlesex Coastal	CPS	137	105	121	131	135	154	122	151	128	101	105	110	132	1,632
		CWS	38	36	37	32	46	49	34	37	44	43	24	33	35	488
		Total	175	141	158	163	181	203	156	188	172	144	129	143	167	2,120
	Middlesex West	CPS	134	86	124	129	155	139	122	138	132	94	84	105	132	1,574
		CWS	35	46	48	28	37	34	34	29	37	20	30	38	54	470
		Total	169	132	172	157	192	173	156	167	169	114	114	143	186	2,044
	County Totals	CPS	361	245	309	337	365	376	329	378	325	247	245	301	350	4,168
CWS		97	96	109	87	99	103	89	93	98	88	72	99	116	1,246	
Total		458	341	418	424	464	479	418	471	423	335	317	400	466	5,414	
MONMOUTH	Monmouth North	CPS	169	141	142	153	158	181	156	164	152	129	119	159	160	1,983
		CWS	49	32	50	30	50	47	40	43	39	37	33	58	51	559
		Total	218	173	192	183	208	228	196	207	191	166	152	217	211	2,542
	Monmouth South	CPS	153	129	118	109	122	171	146	128	125	108	111	118	118	1,656
		CWS	42	44	44	33	43	41	32	43	30	27	38	29	32	478
		Total	195	173	162	142	165	212	178	171	155	135	149	147	150	2,134
	County Totals	CPS	322	270	260	262	280	352	302	292	277	237	230	277	278	3,639
		CWS	91	76	94	63	93	88	72	86	69	64	71	87	83	1,037
		Total	413	346	354	325	373	440	374	378	346	301	301	364	361	4,676
	MORRIS	Morris East	CPS	80	69	62	70	70	80	84	74	74	61	59	85	95
CWS			24	28	25	30	21	28	21	23	22	27	20	29	26	324
Total			104	97	87	100	91	108	105	97	96	88	79	114	121	1,287
Morris West		CPS	108	91	67	101	83	84	70	102	92	69	74	100	87	1,128
		CWS	25	39	29	36	16	32	33	47	45	29	22	36	31	420
		Total	133	130	96	137	99	116	103	149	137	98	96	136	118	1,548
County Totals		CPS	188	160	129	171	153	164	154	176	166	130	133	185	182	2,091
		CWS	49	67	54	66	37	60	54	70	67	56	42	65	57	744
		Total	237	227	183	237	190	224	208	246	233	186	175	250	239	2,835
OCEAN		Ocean North	CPS	132	147	126	113	144	132	149	144	145	120	119	118	145
	CWS		46	42	39	32	36	54	45	52	38	34	39	43	32	532
	Total		178	189	165	145	180	186	194	196	183	154	158	161	177	2,266
	Ocean South	CPS	226	161	168	178	144	171	161	172	167	178	171	170	162	2,229
		CWS	52	37	48	51	40	41	47	50	38	44	40	45	44	577
		Total	278	198	216	229	184	212	208	222	205	222	211	215	206	2,806
	County Totals	CPS	358	308	294	291	288	303	310	316	312	298	290	288	307	3,963
		CWS	98	79	87	83	76	95	92	102	76	78	79	88	76	1,109
		Total	456	387	381	374	364	398	402	418	388	376	369	376	383	5,072
	PASSAIC	Passaic Central	CPS	182	161	179	132	149	161	143	221	152	118	133	159	161
CWS			53	53	59	44	45	77	63	67	58	52	55	55	91	772
Total			235	214	238	176	194	238	206	288	210	170	188	214	252	2,823
Passaic North		CPS	141	119	140	128	148	138	137	190	151	116	123	142	153	1,826
		CWS	51	49	39	57	45	67	46	56	51	31	34	66	56	648
		Total	192	168	179	185	193	205	183	246	202	147	157	208	209	2,474
County Totals		CPS	323	280	319	260	297	299	280	411	303	234	256	301	314	3,877
		CWS	104	102	98	101	90	144	109	123	109	83	89	121	147	1,420
		Total	427	382	417	361	387	443	389	534	412	317	345	422	461	5,297
SALEM		Salem	CPS	80	41	52	64	47	52	84	78	66	51	35	77	47
	CWS		16	9	14	23	13	19	12	27	15	17	18	25	25	233
	Total		96	50	66	87	60	71	96	105	81	68	53	102	72	1,007
	County Totals	CPS	80	41	52	64	47	52	84	78	66	51	35	77	47	774
		CWS	16	9	14	23	13	19	12	27	15	17	18	25	25	233
		Total	96	50	66	87	60	71	96	105	81	68	53	102	72	1,007
SOMERSET	Somerset	CPS	116	95	98	100	101	111	117	131	122	126	88	120	121	1,446
		CWS	36	39	34	26	30	42	37	47	41	32	40	35	32	471
		Total	152	134	132	126	131	153	154	178	163	158	128	155	153	1,917
	County Totals	CPS	116	95	98	100	101	111	117	131	122	126	88	120	121	1,446
		CWS	36	39	34	26	30	42	37	47	41	32	40	35	32	471
		Total	152	134	132	126	131	153	154	178	163	158	128	155	153	1,917

Data in this report is preliminary and may differ from any final report. This report is produced to ensure continuous quality improvement throughout DCF.



Table 5: Monthly Count of CPS Reports and CWS Referrals Assigned to CP&P Local Offices

County	Local Office	Type of Referral														Total	
			Oct 2014	Nov 2014	Dec 2014	Jan 2015	Feb 2015	Mar 2015	Apr 2015	May 2015	Jun 2015	Jul 2015	Aug 2015	Sep 2015	Oct 2015		
SUSSEX	Sussex	CPS	60	71	70	66	64	80	84	74	77	86	71	73	83	959	
		CWS	24	25	21	20	21	29	20	23	35	17	13	16	21	285	
		Total	84	96	91	86	85	109	104	97	112	103	84	89	104	1,244	
	County Totals	CPS	60	71	70	66	64	80	84	74	77	86	71	73	83	959	
		CWS	24	25	21	20	21	29	20	23	35	17	13	16	21	285	
		Total	84	96	91	86	85	109	104	97	112	103	84	89	104	1,244	
UNION	Union Central	CPS	94	81	67	91	75	86	81	85	83	56	52	65	67	983	
		CWS	37	17	15	21	19	30	21	19	20	25	26	24	24	298	
		Total	131	98	82	112	94	116	102	104	103	81	78	89	91	1,281	
	Union East	CPS	94	83	82	72	73	92	85	69	80	51	49	67	74	971	
		CWS	26	28	27	34	24	43	27	33	32	8	23	27	35	367	
		Total	120	111	109	106	97	135	112	102	112	59	72	94	109	1,338	
	Union West	CPS	78	80	69	75	66	81	64	71	62	59	50	70	77	902	
		CWS	25	22	28	29	21	28	29	22	28	29	15	23	27	326	
		Total	103	102	97	104	87	109	93	93	90	88	65	93	104	1,228	
	County Totals	CPS	266	244	218	238	214	259	230	225	225	166	151	202	218	2,856	
		CWS	88	67	70	84	64	101	77	74	80	62	64	74	86	991	
		Total	354	311	288	322	278	360	307	299	305	228	215	276	304	3,847	
	WARREN	Warren	CPS	96	64	74	68	87	66	82	84	78	71	81	87	1,009	
			CWS	17	23	28	29	32	26	19	33	24	18	23	20	20	312
			Total	113	87	102	97	119	92	101	117	102	89	94	101	107	1,321
County Totals		CPS	96	64	74	68	87	66	82	84	78	71	81	87	1,009		
		CWS	17	23	28	29	32	26	19	33	24	18	23	20	20	312	
		Total	113	87	102	97	119	92	101	117	102	89	94	101	107	1,321	
County CPS Referral Total		CPS	5,122	3,973	4,164	4,252	4,250	4,849	4,614	5,060	4,508	3,842	3,714	4,477	4,797	57,622	
County CWS Referral Total		CWS	1,490	1,373	1,402	1,337	1,290	1,536	1,341	1,511	1,385	1,223	1,220	1,446	1,572	18,126	
County Referral Total		Total	6,612	5,346	5,566	5,589	5,540	6,385	5,955	6,571	5,893	5,065	4,934	5,923	6,369	75,748	
Central Region IAIU	CPS	70	54	61	48	50	50	51	54	54	63	41	53	52	701		
	CWS	0	0	0	0	0	0	0	0	0	0	0	0	0	0		
	Total	70	54	61	48	50	50	51	54	54	63	41	53	52	701		
Metro Region IAIU	CPS	70	45	49	53	59	67	54	70	66	24	30	36	50	673		
	CWS	1	0	0	0	0	0	0	0	0	0	0	0	0	1		
	Total	71	45	49	53	59	67	54	70	66	24	30	36	50	674		
Northern Region IAIU	CPS	80	47	67	62	61	73	70	80	65	56	43	45	66	815		
	CWS	0	0	0	0	0	0	0	0	0	0	0	0	0	0		
	Total	80	47	67	62	61	73	70	80	65	56	43	45	66	815		
Southern Region IAIU	CPS	85	59	89	60	68	68	78	97	88	61	59	60	83	955		
	CWS	0	0	0	0	0	0	0	0	0	0	0	0	0	0		
	Total	85	59	89	60	68	68	78	97	88	61	59	60	83	955		
IAIU CPS Subtotal		CPS	305	205	266	223	238	258	253	301	273	204	173	194	251	3,144	
IAIU CWS Subtotal		CWS	0	0	0	0	0	0	0	0	0	0	0	1	1		
IAIU Subtotal		Total	305	205	266	223	238	258	253	301	273	204	173	194	252	3,145	
County and IAIU CPS Subtotal		CPS	5,427	4,178	4,430	4,475	4,488	5,107	4,867	5,361	4,781	4,046	3,887	4,671	5,048	60,766	
County and IAIU CWS Subtotal		CWS	1,490	1,373	1,402	1,337	1,290	1,536	1,341	1,511	1,385	1,223	1,220	1,446	1,573	18,127	
Unable to Determine⁽¹⁾		Total	174	117	123	127	138	118	141	144	153	142	124	153	136	1,790	
Other Offices		Total	4	2	1	1	3	6	2	2	4	2	3	1	1	32	
Grand Total		Total	7,095	5,670	5,956	5,940	5,919	6,767	6,351	7,018	6,323	5,413	5,234	6,271	6,758	80,715	

⁽¹⁾CPS Reports or CWS Referrals not assigned to an office through the Assignment Designee, but were assigned to an office for an assessment or investigation.