



## **Child Protection and Permanency**

# **Monthly Screening and Investigation Report December 2015**

Allison Blake, Ph.D., L.S.W.  
Commissioner

January 15, 2016



## Table of Contents

Table 1: NJ State Central Registry Activity: Monthly Child Abuse and Neglect Hotline Calls, Intakes and Assignments to Child Protection & Permanency (CP&P) Offices

---

Chart 1: CP&P Annual Trends in Child Protection Services (CPS) Reports and Child Welfare Services (CWS) Referrals

---

Table 2: Assignments to CP&P Offices: CPS Reports and CWS Referrals

---

Table 3: Source of CPS Reports and CWS Referrals

---

Table 4: Monthly Count of CPS Reports and CWS Referrals Assigned to Counties

---

Table 5: Monthly Count of CPS Reports and CWS Referrals Assigned to CP&P Local Offices

---

**Table 1: NJ State Central Registry Activity: Monthly Child Abuse and Neglect Hotline Calls, Intakes and Assignments to CP&P Offices<sup>1,2,7</sup>**

2014 - 2015	Hotline Call Activity				Intakes Recorded in NJ SPIRIT <sup>6,8</sup>												Assignments to CP&P Offices				
	Total Calls to SCR <sup>3</sup>	Abandon Calls <sup>4</sup>	Average Time to Answer (seconds)	Resulting NJS Intakes <sup>5</sup>	CPS Reports		CWS Referrals		No Action Required (NAR)		Related Information (RI)		Information & Referral (I&R)		Information Only (IO)		CPS Reports		CWS Referrals		Total
					n	%	n	%	n	%	n	%	n	%	n	%	n	%	n	%	
December 2014	13,289	468	29	14,588	4,511	30.9%	1,449	9.9%	303	2.1%	3,888	26.7%	1,620	11.1%	2,817	19.3%	4,509	75.7%	1,447	24.3%	5,956
January 2015	13,991	761	34	15,030	4,549	30.3%	1,390	9.2%	387	2.6%	3,939	26.2%	1,591	10.6%	3,174	21.1%	4,549	76.6%	1,391	23.4%	5,940
February 2015	12,881	537	35	14,010	4,573	32.6%	1,342	9.6%	418	3.0%	3,494	24.9%	1,516	10.8%	2,667	19.0%	4,574	77.3%	1,345	22.7%	5,919
March 2015	14,805	486	30	16,174	5,187	32.1%	1,580	9.8%	363	2.2%	4,021	24.9%	1,811	11.2%	3,212	19.9%	5,187	76.7%	1,580	23.3%	6,767
April 2015	13,698	409	26	15,107	4,967	32.9%	1,381	9.1%	366	2.4%	3,900	25.8%	1,615	10.7%	2,878	19.1%	4,967	78.2%	1,384	21.8%	6,351
May 2015	15,466	583	39	16,769	5,457	32.5%	1,560	9.3%	340	2.0%	4,437	26.5%	1,874	11.2%	3,101	18.5%	5,457	77.8%	1,561	22.2%	7,018
June 2015	13,760	405	29	15,189	4,887	32.2%	1,436	9.5%	373	2.5%	3,981	26.2%	1,659	10.9%	2,853	18.8%	4,887	77.3%	1,436	22.7%	6,323
July 2015	12,132	380	20	13,624	4,140	30.4%	1,273	9.3%	442	3.2%	3,569	26.2%	1,416	10.4%	2,784	20.4%	4,140	76.5%	1,273	23.5%	5,413
August 2015	12,553	652	24	13,691	3,978	29.1%	1,257	9.2%	401	2.9%	3,713	27.1%	1,384	10.1%	2,958	21.6%	3,978	76.0%	1,256	24.0%	5,234
September 2015	13,335	351	24	14,955	4,776	31.9%	1,494	10.0%	467	3.1%	3,908	26.1%	1,601	10.7%	2,709	18.1%	4,776	76.2%	1,495	23.8%	6,271
October 2015	14,304	315	18	15,821	5,139	32.5%	1,620	10.2%	332	2.1%	4,073	25.7%	1,834	11.6%	2,823	17.8%	5,139	76.0%	1,619	24.0%	6,758
November 2015	13,321	445	20	14,527	4,417	30.4%	1,475	10.2%	347	2.4%	3,942	27.1%	1,513	10.4%	2,833	19.5%	4,417	74.9%	1,477	25.1%	5,894
<b>December 2015</b>	<b>13,186</b>	<b>603</b>	<b>28</b>	<b>14,236</b>	<b>4,530</b>	<b>31.8%</b>	<b>1,544</b>	<b>10.8%</b>	<b>370</b>	<b>2.6%</b>	<b>3,709</b>	<b>26.1%</b>	<b>1,567</b>	<b>11.0%</b>	<b>2,516</b>	<b>17.7%</b>	<b>4,530</b>	<b>74.6%</b>	<b>1,544</b>	<b>25.4%</b>	<b>6,074</b>
<b>Monthly Average</b>	<b>13,594</b>	<b>492</b>	<b>27</b>	<b>14,902</b>	<b>4,701</b>	<b>31.5%</b>	<b>1,446</b>	<b>9.7%</b>	<b>378</b>	<b>2.5%</b>	<b>3,890</b>	<b>26.1%</b>	<b>1,615</b>	<b>10.8%</b>	<b>2,871</b>	<b>19.3%</b>	<b>4,701</b>	<b>76.5%</b>	<b>1,447</b>	<b>23.5%</b>	<b>6,148</b>
<b>Overall Total</b>	<b>176,721</b>	<b>6,395</b>		<b>193,721</b>	<b>61,111</b>		<b>18,801</b>		<b>4,909</b>		<b>50,574</b>		<b>21,001</b>		<b>37,325</b>		<b>61,110</b>	<b>76.5%</b>	<b>18,808</b>	<b>23.5%</b>	<b>79,918</b>

<sup>1</sup>Comes from three distinct sources: (1) the Automatic Call Distribution (ACD) phone system; which keeps a count of the number of calls and call routing; (2) Monthly NJSpirit Intakes; which record decision making on calls received by hotline screeners, and (3) NJSpirit extracts of assigned CWS Referrals and CPS Reports.

<sup>2</sup>The number of Intakes, CPS Reports, and CWS Referrals are based on an extract from NJSpirit. Data extracted by the Office of Research, Evaluation, and Reporting on **January 13, 2016** includes all Intakes, CPS Reports, and CWS Referrals received from **December 1, 2015 through December 31, 2015**.

<sup>3</sup>The number calls received through the ACD System that were directed to a screener from any call-in phone number.

<sup>4</sup>The number of calls received through the ACD System that are abandoned either while waiting in queue or while ringing.

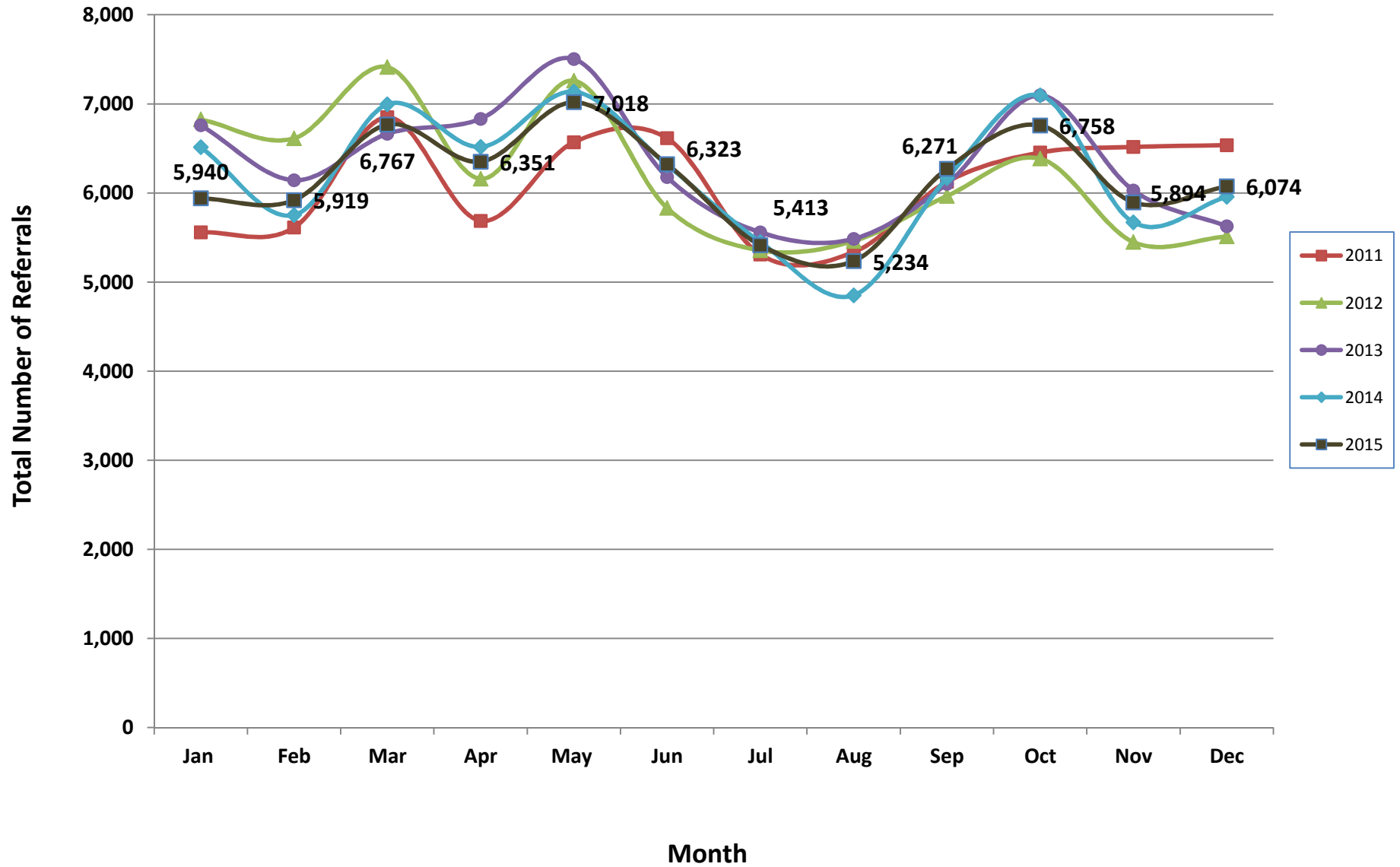
<sup>5</sup>The number of Intakes entered in NJSpirit from the number of calls received.

<sup>6</sup>The number of Intakes recorded in NJSpirit, by type of Intake. There is not a one-to-one relationship between an ACD call and an Intake; multiple calls to State Central Registry (SCR) may result in a single Intake, or one call may result in multiple Intakes.

<sup>7</sup>Intake: The process of documenting: a report of alleged abuse or neglect of a child (CPS); a request for services on behalf of a child, or a referral of a child for services (CWS); a call in which the caller provides additional or clarifying information about a current service case or active investigation (RI); informing a caller of, or referring a caller to, services available from other private or public sources (I&R); a call that requires no action by CP&P (NAR); or a response to a simple inquiry (IO).

<sup>8</sup>NJ SPIRIT: NJ Statewide Protection Investigation and Reporting Information Tool case management system

### CP&P Annual Trends in CPS Reports and CWS Referrals



**Table 2: Assignments to CP&P Offices: CPS Reports and CWS Referrals<sup>1</sup>**

Intake Date <sup>3</sup>		CPS Reports <sup>2</sup>	CWS Referrals <sup>2</sup>	Total Assignments <sup>2</sup>
2010	Jan 2010	5,154	963	6,117
	Feb 2010	4,446	804	5,250
	Mar 2010	6,314	1,147	7,461
	Apr 2010	5,465	1,040	6,505
	May 2010	5,797	1,177	6,974
	Jun 2010	5,734	1,157	6,891
	Jul 2010	4,270	1,017	5,287
	Aug 2010	4,110	1,028	5,138
	Sep 2010	4,922	1,012	5,934
	Oct 2010	5,105	1,136	6,241
	Nov 2010	4,842	1,028	5,870
	Dec 2010	4,472	909	5,381
	<b>Total</b>	<b>60,631</b>	<b>12,418</b>	<b>73,049</b>
2011	Jan 2011	4,616	942	5,558
	Feb 2011	4,672	939	5,611
	Mar 2011	5,701	1,148	6,849
	Apr 2011	4,682	1,005	5,687
	May 2011	5,362	1,207	6,569
	Jun 2011	5,299	1,315	6,614
	Jul 2011	4,200	1,108	5,308
	Aug 2011	4,170	1,166	5,336
	Sep 2011	4,872	1,253	6,125
	Oct 2011	5,322	1,132	6,454
	Nov 2011	5,220	1,296	6,516
	Dec 2011	5,363	1,173	6,536
	<b>Total</b>	<b>59,479</b>	<b>13,684</b>	<b>73,163</b>
2012	Jan 2012	5,530	1,294	6,824
	Feb 2012	5,358	1,255	6,613
	Mar 2012	5,985	1,428	7,413
	Apr 2012	4,899	1,259	6,158
	May 2012	5,874	1,385	7,259
	Jun 2012	4,640	1,190	5,830
	Jul 2012	4,254	1,101	5,355
	Aug 2012	4,325	1,135	5,460
	Sep 2012	4,769	1,196	5,965
	Oct 2012	5,178	1,207	6,385
	Nov 2012	4,310	1,138	5,448
	Dec 2012	4,394	1,116	5,510
	<b>Total</b>	<b>59,516</b>	<b>14,704</b>	<b>74,220</b>
2013	Jan 2013	5,464	1,296	6,760
	Feb 2013	4,966	1,177	6,143
	Mar 2013	5,355	1,309	6,664
	Apr 2013	5,430	1,402	6,832
	May 2013	5,993	1,510	7,503
	Jun 2013	4,947	1,230	6,177
	Jul 2013	4,330	1,228	5,558
	Aug 2013	4,330	1,155	5,485
	Sep 2013	4,851	1,251	6,102
	Oct 2013	5,614	1,481	7,095
	Nov 2013	4,694	1,334	6,028
	Dec 2013	4,397	1,229	5,626
	<b>Total</b>	<b>60,371</b>	<b>15,602</b>	<b>75,973</b>

**Table 2: Assignments to CP&P Offices: CPS Reports and CWS Referrals<sup>1</sup>**

Intake Date <sup>3</sup>		CPS Reports <sup>2</sup>	CWS Referrals <sup>2</sup>	Total Assignments <sup>2</sup>
<b>2014</b>	Jan 2014	5,097	1,416	6,513
	Feb 2014	4,457	1,295	5,752
	Mar 2014	5,408	1,586	6,994
	Apr 2014	5,049	1,467	6,516
	May 2014	5,501	1,635	7,136
	Jun 2014	4,796	1,517	6,313
	Jul 2014	4,202	1,247	5,449
	Aug 2014	3,629	1,222	4,851
	Sep 2014	4,668	1,498	6,166
	Oct 2014	5,509	1,586	7,095
	Nov 2014	4,254	1,416	5,670
	Dec 2014	4,509	1,447	5,956
	<b>Total</b>	<b>57,079</b>	<b>17,332</b>	<b>74,411</b>
<b>2015</b>	Jan 2015	4,549	1,391	5,940
	Feb 2015	4,574	1,345	5,919
	Mar 2015	5,187	1,580	6,767
	Apr 2015	4,967	1,384	6,351
	May 2015	5,457	1,561	7,018
	Jun 2015	4,887	1,436	6,323
	Jul 2015	4,140	1,273	5,413
	August 2015	3,978	1,256	5,234
	September 2015	4,776	1,495	6,271
	October 2015	5,139	1,619	6,758
	November 2015	4,417	1,477	5,894
	<b>December 2015</b>	<b>4,530</b>	<b>1,544</b>	<b>6,074</b>
	<b>Total</b>	<b>56,601</b>	<b>17,361</b>	<b>73,962</b>
<b>Grand Total</b>		<b>353,677</b>	<b>91,101</b>	<b>444,778</b>

<sup>1</sup>Source of Data: NJ SPIRIT

<sup>2</sup>A CPS Report or a CWS Referral may include multiple children in a family, with one or more allegation or request for services. In these cases, each CPS Report or CWS Referral is counted once - the CPS Report or the CWS Referral is the unit of analysis rather than the child.

<sup>3</sup>Prior to January 2014, the number of CPS Reports and CWS Referrals was based on the type of assignment of the CPS Report or CWS Referral. Beginning in January 2014, the number of CPS Reports and CWS Referrals is based on the number of CPS Reports and CWS Referrals received.

**Table 3: Source of CPS Reports and CWS Referrals**

CPS Reports and CWS Referrals	Source	Dec 2014	Jan 2015	Feb 2015	Mar 2015	Apr 2015	May 2015	Jun 2015	Jul 2015	Aug 2015	Sep 2015	Oct 2015	Nov 2015	December 2015		13 Month Total	
	School Staff	1,481	1,504	1,629	1,894	1,487	1,868	1,166	183	75	1,123	1,763	1,454	<b>1,596</b>	<b>26%</b>	17,223	22%
	Healthcare Provider	774	701	720	825	861	812	808	816	832	780	825	766	<b>780</b>	<b>13%</b>	10,300	13%
	Law Enforcement	820	870	783	933	925	1056	1093	1082	1,010	1,040	1,003	909	<b>910</b>	<b>15%</b>	12,434	16%
	Government Agency	402	362	377	465	445	370	422	495	449	437	426	376	<b>389</b>	<b>6%</b>	5,415	7%
	Parent	520	510	506	539	493	578	581	594	592	589	518	451	<b>495</b>	<b>8%</b>	6,966	9%
	Relative/Friend/Neighbor	406	468	393	491	484	540	546	604	595	592	526	466	<b>455</b>	<b>7%</b>	6,566	8%
	Anonymous	659	612	607	687	641	802	725	611	622	739	710	609	<b>587</b>	<b>10%</b>	8,611	11%
	CP&P	113	109	120	110	117	103	125	119	110	123	137	121	<b>112</b>	<b>2%</b>	1,519	2%
	Court/Legal	114	118	95	108	116	128	148	155	113	115	119	108	<b>108</b>	<b>2%</b>	1,545	2%
	Community Group/Individual	211	233	263	260	295	266	232	280	297	243	306	240	<b>255</b>	<b>4%</b>	3,381	4%
	Facility Staff (incl Correctional Facility)	89	107	79	71	106	76	89	92	105	78	83	83	<b>81</b>	<b>1%</b>	1,139	1%
	Child (Self)	46	40	35	39	37	49	41	44	67	47	34	31	<b>21</b>	<b>0%</b>	531	1%
	Other	308	291	298	328	332	353	330	327	344	348	288	265	<b>274</b>	<b>5%</b>	4,086	5%
Daycare/Babysitter	13	15	14	17	12	17	17	11	23	17	20	15	<b>11</b>	<b>0%</b>	202	0%	
<b>Total</b>	<b>5,956</b>	<b>5,940</b>	<b>5,919</b>	<b>6,767</b>	<b>6,351</b>	<b>7,018</b>	<b>6,323</b>	<b>5,413</b>	<b>5,234</b>	<b>6,271</b>	<b>6,758</b>	<b>5,894</b>	<b>6,074</b>		<b>79,918</b>		

**Table 4: Monthly Count of CPS Reports and CWS Referrals Assigned to Counties**

County														Average # of Assignments the Last 13 Months	Dec 14 to Dec 15 Numerical Difference
	Dec 2014	Jan 2015	Feb 2015	Mar 2015	Apr 2015	May 2015	Jun 2015	Jul 2015	Aug 2015	Sep 2015	Oct 2015	Nov 2015	December 2015		
Atlantic	245	233	210	269	277	275	239	218	227	295	267	227	255	249	10
Bergen	323	323	324	386	335	382	296	284	257	345	411	336	394	338	71
Burlington	277	269	305	285	319	322	274	263	284	307	303	258	268	287	-9
Camden	464	487	505	534	506	551	552	449	438	516	609	461	498	505	34
Cape May	71	82	68	93	85	80	69	78	86	92	112	75	89	83	18
Cumberland	207	213	201	253	217	249	217	173	152	231	215	177	174	206	-33
Essex	622	617	597	769	699	779	642	583	565	635	675	660	625	651	3
Gloucester	232	238	223	276	288	244	259	258	255	247	300	245	261	256	29
Hudson	398	414	396	442	382	546	471	352	325	399	451	342	431	411	33
Hunterdon	65	30	52	45	50	51	47	48	38	58	52	37	39	47	-26
Mercer	230	244	209	264	244	249	262	198	226	263	324	254	252	248	22
Middlesex	418	424	464	479	418	471	423	335	317	400	466	387	435	418	17
Monmouth	354	325	373	440	374	378	346	301	301	364	361	343	308	351	-46
Morris	183	237	190	224	208	246	233	186	175	250	239	216	215	216	32
Ocean	381	374	364	398	402	418	388	376	369	376	383	401	336	382	-45
Passaic	417	361	387	443	389	534	412	317	345	422	461	422	449	412	32
Salem	66	87	60	71	96	105	81	68	53	102	72	89	81	79	15
Somerset	132	126	131	153	154	178	163	158	128	155	153	157	143	149	11
Sussex	91	86	85	109	104	97	112	103	84	89	104	103	95	97	4
Union	288	322	278	360	307	299	305	228	215	276	304	257	318	289	30
Warren	102	97	119	92	101	117	102	89	94	101	107	81	78	98	-24
<b>County Subtotals</b>	<b>5,566</b>	<b>5,589</b>	<b>5,541</b>	<b>6,385</b>	<b>5,955</b>	<b>6,571</b>	<b>5,893</b>	<b>5,065</b>	<b>4,934</b>	<b>5,923</b>	<b>6,369</b>	<b>5,528</b>	<b>5,744</b>	<b>5,774</b>	<b>178</b>
Central Region IAIU	61	48	50	50	51	54	54	24	41	53	52	56	62	50	1
Metro Region IAIU	49	53	58	67	54	70	66	56	30	36	50	48	46	53	-3
Northern Region IAIU	67	62	61	73	70	80	65	61	43	45	66	58	44	61	-23
Southern Region IAIU	89	60	68	68	78	97	88	63	59	60	83	72	61	73	-28
<b>IAIU Subtotals</b>	<b>266</b>	<b>223</b>	<b>237</b>	<b>258</b>	<b>253</b>	<b>301</b>	<b>273</b>	<b>204</b>	<b>173</b>	<b>194</b>	<b>251</b>	<b>234</b>	<b>213</b>	<b>237</b>	<b>-53</b>
<b>Unable to Determine<sup>1</sup></b>	<b>123</b>	<b>127</b>	<b>138</b>	<b>118</b>	<b>141</b>	<b>144</b>	<b>153</b>	<b>142</b>	<b>124</b>	<b>153</b>	<b>136</b>	<b>131</b>	<b>114</b>	<b>134</b>	<b>-9</b>
<b>Other Offices</b>	<b>1</b>	<b>1</b>	<b>3</b>	<b>6</b>	<b>2</b>	<b>2</b>	<b>4</b>	<b>2</b>	<b>3</b>	<b>1</b>	<b>2</b>	<b>1</b>	<b>3</b>	<b>2</b>	<b>2</b>
<b>Grand Total</b>	<b>5,956</b>	<b>5,940</b>	<b>5,919</b>	<b>6,767</b>	<b>6,351</b>	<b>7,018</b>	<b>6,323</b>	<b>5,413</b>	<b>5,234</b>	<b>6,271</b>	<b>6,758</b>	<b>5,894</b>	<b>6,074</b>	<b>6,148</b>	<b>118</b>

<sup>1</sup>CPS Reports or CWS Referrals not assigned to an office through the Assignment Designee, but were assigned to an office for an assessment or investigation.



**Table 5: Monthly Count of CPS Reports and CWS Referrals Assigned to CP&P Local Offices**

County	Local Office	Type of Referral													Total	
			Dec 2014	Jan 2015	Feb 2015	Mar 2015	Apr 2015	May 2015	Jun 2015	Jul 2015	Aug 2015	Sep 2015	Oct 2015	Nov 2015		Dec 2015
ATLANTIC	Atlantic East	CPS	120	106	77	116	134	121	115	100	107	134	115	107	113	1,465
		CWS	24	29	26	32	32	38	24	30	26	35	30	32	36	394
		<b>Total</b>	<b>144</b>	<b>135</b>	<b>103</b>	<b>148</b>	<b>166</b>	<b>159</b>	<b>139</b>	<b>130</b>	<b>133</b>	<b>169</b>	<b>145</b>	<b>139</b>	<b>149</b>	<b>1,859</b>
	Atlantic West	CPS	77	76	85	101	86	96	81	72	77	94	101	70	82	1,098
		CWS	24	22	22	20	25	20	19	16	17	32	21	18	24	280
		<b>Total</b>	<b>101</b>	<b>98</b>	<b>107</b>	<b>121</b>	<b>111</b>	<b>116</b>	<b>100</b>	<b>88</b>	<b>94</b>	<b>126</b>	<b>122</b>	<b>88</b>	<b>106</b>	<b>1,378</b>
	County Totals	CPS	197	182	162	217	220	217	196	172	184	228	216	177	195	2,563
		CWS	48	51	48	52	57	58	43	46	43	67	51	50	60	674
		<b>Total</b>	<b>245</b>	<b>233</b>	<b>210</b>	<b>269</b>	<b>277</b>	<b>275</b>	<b>239</b>	<b>218</b>	<b>227</b>	<b>295</b>	<b>267</b>	<b>227</b>	<b>255</b>	<b>3,237</b>
BERGEN	Bergen Central	CPS	94	97	94	103	110	123	102	83	72	98	117	98	119	1,310
		CWS	39	39	32	37	36	34	32	29	29	36	50	37	41	471
		<b>Total</b>	<b>133</b>	<b>136</b>	<b>126</b>	<b>140</b>	<b>146</b>	<b>157</b>	<b>134</b>	<b>112</b>	<b>101</b>	<b>134</b>	<b>167</b>	<b>135</b>	<b>160</b>	<b>1,781</b>
	Bergen South	CPS	136	144	144	183	133	175	120	127	106	157	177	144	164	1,910
		CWS	54	43	54	63	56	50	42	45	50	54	67	57	70	705
		<b>Total</b>	<b>190</b>	<b>187</b>	<b>198</b>	<b>246</b>	<b>189</b>	<b>225</b>	<b>162</b>	<b>172</b>	<b>156</b>	<b>211</b>	<b>244</b>	<b>201</b>	<b>234</b>	<b>2,615</b>
	County Totals	CPS	230	241	238	286	243	298	222	210	178	255	294	242	283	3,220
		CWS	93	82	86	100	92	84	74	74	79	90	117	94	111	1,176
		<b>Total</b>	<b>323</b>	<b>323</b>	<b>324</b>	<b>386</b>	<b>335</b>	<b>382</b>	<b>296</b>	<b>284</b>	<b>257</b>	<b>345</b>	<b>411</b>	<b>336</b>	<b>394</b>	<b>4,396</b>
BURLINGTON	Burlington East	CPS	110	110	116	105	138	125	99	97	110	110	121	93	118	1,452
		CWS	30	25	33	29	28	37	26	38	36	36	31	28	20	397
		<b>Total</b>	<b>140</b>	<b>135</b>	<b>149</b>	<b>134</b>	<b>166</b>	<b>162</b>	<b>125</b>	<b>135</b>	<b>146</b>	<b>146</b>	<b>152</b>	<b>121</b>	<b>138</b>	<b>1,849</b>
	Burlington West	CPS	100	104	121	119	117	122	115	96	97	120	119	107	101	1,438
		CWS	37	30	35	32	36	38	34	32	41	41	32	30	29	447
		<b>Total</b>	<b>137</b>	<b>134</b>	<b>156</b>	<b>151</b>	<b>153</b>	<b>160</b>	<b>149</b>	<b>128</b>	<b>138</b>	<b>161</b>	<b>151</b>	<b>137</b>	<b>130</b>	<b>1,885</b>
	County Totals	CPS	210	214	237	224	255	247	214	193	207	230	240	200	219	2,890
		CWS	67	55	68	61	64	75	60	70	77	77	63	58	49	844
		<b>Total</b>	<b>277</b>	<b>269</b>	<b>305</b>	<b>285</b>	<b>319</b>	<b>322</b>	<b>274</b>	<b>263</b>	<b>284</b>	<b>307</b>	<b>303</b>	<b>258</b>	<b>268</b>	<b>3,734</b>
CAMDEN	Camden Central	CPS	103	123	123	127	115	122	121	105	93	116	148	101	104	1,501
		CWS	23	35	28	23	38	29	27	29	25	36	38	34	24	389
		<b>Total</b>	<b>126</b>	<b>158</b>	<b>151</b>	<b>150</b>	<b>153</b>	<b>151</b>	<b>148</b>	<b>134</b>	<b>118</b>	<b>152</b>	<b>186</b>	<b>135</b>	<b>128</b>	<b>1,890</b>
	Camden East	CPS	93	74	93	89	102	119	125	81	105	109	123	100	106	1,319
		CWS	24	31	19	30	31	30	30	30	28	21	21	32	27	354
		<b>Total</b>	<b>117</b>	<b>105</b>	<b>112</b>	<b>119</b>	<b>133</b>	<b>149</b>	<b>155</b>	<b>111</b>	<b>133</b>	<b>130</b>	<b>144</b>	<b>132</b>	<b>133</b>	<b>1,673</b>
	Camden North	CPS	73	89	85	106	89	101	116	82	77	95	120	83	108	1,224
		CWS	33	31	29	33	31	33	36	26	24	33	40	17	34	400
		<b>Total</b>	<b>106</b>	<b>120</b>	<b>114</b>	<b>139</b>	<b>120</b>	<b>134</b>	<b>152</b>	<b>108</b>	<b>101</b>	<b>128</b>	<b>160</b>	<b>100</b>	<b>142</b>	<b>1,624</b>
	Camden South	CPS	84	78	96	97	88	92	73	76	66	83	88	77	75	1,073
		CWS	31	26	32	29	12	25	24	20	20	23	31	17	20	310
		<b>Total</b>	<b>115</b>	<b>104</b>	<b>128</b>	<b>126</b>	<b>100</b>	<b>117</b>	<b>97</b>	<b>96</b>	<b>86</b>	<b>106</b>	<b>119</b>	<b>94</b>	<b>95</b>	<b>1,383</b>
	County Totals	CPS	353	364	397	419	394	434	435	344	341	403	479	361	393	5,117
		CWS	111	123	108	115	112	117	117	105	97	113	130	100	105	1,453
		<b>Total</b>	<b>464</b>	<b>487</b>	<b>505</b>	<b>534</b>	<b>506</b>	<b>551</b>	<b>552</b>	<b>449</b>	<b>438</b>	<b>516</b>	<b>609</b>	<b>461</b>	<b>498</b>	<b>6,570</b>
CAPE MAY	Cape May	CPS	54	63	54	78	63	66	57	63	69	72	87	51	64	841
		CWS	17	19	14	15	22	14	12	15	17	20	25	24	25	239
		<b>Total</b>	<b>71</b>	<b>82</b>	<b>68</b>	<b>93</b>	<b>85</b>	<b>80</b>	<b>69</b>	<b>78</b>	<b>86</b>	<b>92</b>	<b>112</b>	<b>75</b>	<b>89</b>	<b>1,080</b>
	County Totals	CPS	54	63	54	78	63	66	57	63	69	72	87	51	64	841
		CWS	17	19	14	15	22	14	12	15	17	20	25	24	25	239
		<b>Total</b>	<b>71</b>	<b>82</b>	<b>68</b>	<b>93</b>	<b>85</b>	<b>80</b>	<b>69</b>	<b>78</b>	<b>86</b>	<b>92</b>	<b>112</b>	<b>75</b>	<b>89</b>	<b>1,080</b>
CUMBERLAND	Cumberland East	CPS	43	51	52	63	50	70	66	33	36	61	42	39	46	652
		CWS	22	16	16	15	12	25	19	6	9	18	26	18	14	216
		<b>Total</b>	<b>65</b>	<b>67</b>	<b>68</b>	<b>78</b>	<b>62</b>	<b>95</b>	<b>85</b>	<b>39</b>	<b>45</b>	<b>79</b>	<b>68</b>	<b>57</b>	<b>60</b>	<b>868</b>
	Cumberland West	CPS	107	121	105	143	117	123	99	108	81	123	116	88	83	1,414
		CWS	35	25	28	32	38	31	33	26	26	29	31	32	31	397
		<b>Total</b>	<b>142</b>	<b>146</b>	<b>133</b>	<b>175</b>	<b>155</b>	<b>154</b>	<b>132</b>	<b>134</b>	<b>107</b>	<b>152</b>	<b>147</b>	<b>120</b>	<b>114</b>	<b>1,811</b>
	County Totals	CPS	150	172	157	206	167	193	165	141	117	184	158	127	129	2,066
		CWS	57	41	44	47	50	56	52	32	35	47	57	50	45	613
		<b>Total</b>	<b>207</b>	<b>213</b>	<b>201</b>	<b>253</b>	<b>217</b>	<b>249</b>	<b>217</b>	<b>173</b>	<b>152</b>	<b>231</b>	<b>215</b>	<b>177</b>	<b>174</b>	<b>2,679</b>

**Table 5: Monthly Count of CPS Reports and CWS Referrals Assigned to CP&P Local Offices**

County	Local Office	Type of Referral													Total	
			Dec 2014	Jan 2015	Feb 2015	Mar 2015	Apr 2015	May 2015	Jun 2015	Jul 2015	Aug 2015	Sep 2015	Oct 2015	Nov 2015		Dec 2015
ESSEX	Essex Central	CPS	77	97	68	92	105	118	81	76	85	80	105	87	72	1,143
		CWS	36	34	31	25	32	36	27	39	41	26	42	37	39	445
		<b>Total</b>	<b>113</b>	<b>131</b>	<b>99</b>	<b>117</b>	<b>137</b>	<b>154</b>	<b>108</b>	<b>115</b>	<b>126</b>	<b>106</b>	<b>147</b>	<b>124</b>	<b>111</b>	<b>1,588</b>
	Essex North	CPS	59	50	48	63	78	75	67	42	40	53	53	54	66	748
		CWS	16	14	23	26	20	20	23	18	17	22	23	21	30	273
		<b>Total</b>	<b>75</b>	<b>64</b>	<b>71</b>	<b>89</b>	<b>98</b>	<b>95</b>	<b>90</b>	<b>60</b>	<b>57</b>	<b>75</b>	<b>76</b>	<b>75</b>	<b>96</b>	<b>1,021</b>
	Essex South	CPS	61	70	70	95	75	71	51	49	49	66	57	58	56	828
		CWS	29	24	26	22	17	16	20	19	16	25	23	16	17	270
		<b>Total</b>	<b>90</b>	<b>94</b>	<b>96</b>	<b>117</b>	<b>92</b>	<b>87</b>	<b>71</b>	<b>68</b>	<b>65</b>	<b>91</b>	<b>80</b>	<b>74</b>	<b>73</b>	<b>1,098</b>
	Newark Center City	CPS	91	75	74	110	90	106	72	61	64	89	83	82	78	1,075
		CWS	24	19	21	33	15	40	27	23	29	29	35	36	39	370
		<b>Total</b>	<b>115</b>	<b>94</b>	<b>95</b>	<b>143</b>	<b>105</b>	<b>146</b>	<b>99</b>	<b>84</b>	<b>93</b>	<b>118</b>	<b>118</b>	<b>118</b>	<b>117</b>	<b>1,445</b>
	Newark Northeast	CPS	68	74	101	107	106	94	108	81	69	101	83	81	65	1,138
		CWS	40	36	27	45	27	34	28	31	26	25	37	34	33	423
		<b>Total</b>	<b>108</b>	<b>110</b>	<b>128</b>	<b>152</b>	<b>133</b>	<b>128</b>	<b>136</b>	<b>112</b>	<b>95</b>	<b>126</b>	<b>120</b>	<b>115</b>	<b>98</b>	<b>1,561</b>
	Newark South	CPS	88	94	81	120	97	127	102	113	94	88	100	106	92	1,302
		CWS	33	30	26	31	37	42	36	31	35	31	34	48	38	452
		<b>Total</b>	<b>121</b>	<b>124</b>	<b>107</b>	<b>151</b>	<b>134</b>	<b>169</b>	<b>138</b>	<b>144</b>	<b>129</b>	<b>119</b>	<b>134</b>	<b>154</b>	<b>130</b>	<b>1,754</b>
County Totals	CPS	444	460	442	587	551	591	481	422	401	477	481	468	429	6,234	
	CWS	178	157	154	182	148	188	161	161	164	158	194	192	196	2,233	
	<b>Total</b>	<b>622</b>	<b>617</b>	<b>596</b>	<b>769</b>	<b>699</b>	<b>779</b>	<b>642</b>	<b>583</b>	<b>565</b>	<b>635</b>	<b>675</b>	<b>660</b>	<b>625</b>	<b>8,467</b>	
GLOUCESTER	Gloucester East	CPS	85	95	96	110	114	88	85	85	98	98	109	91	101	1,255
		CWS	28	18	20	29	34	18	25	36	34	24	26	17	25	334
		<b>Total</b>	<b>113</b>	<b>113</b>	<b>116</b>	<b>139</b>	<b>148</b>	<b>106</b>	<b>110</b>	<b>121</b>	<b>132</b>	<b>122</b>	<b>135</b>	<b>108</b>	<b>126</b>	<b>1,589</b>
	Gloucester West	CPS	96	96	80	113	115	114	121	118	93	94	133	103	109	1,385
		CWS	23	29	27	24	25	24	28	19	30	31	32	34	26	352
		<b>Total</b>	<b>119</b>	<b>125</b>	<b>107</b>	<b>137</b>	<b>140</b>	<b>138</b>	<b>149</b>	<b>137</b>	<b>123</b>	<b>125</b>	<b>165</b>	<b>137</b>	<b>135</b>	<b>1,737</b>
	County Totals	CPS	181	191	176	223	229	202	206	203	191	192	242	194	210	2,640
		<b>Total</b>	<b>232</b>	<b>238</b>	<b>223</b>	<b>276</b>	<b>288</b>	<b>244</b>	<b>259</b>	<b>258</b>	<b>255</b>	<b>247</b>	<b>300</b>	<b>245</b>	<b>261</b>	<b>3,326</b>
HUDSON	Hudson Central	CPS	56	73	84	90	89	112	88	71	60	62	72	59	79	995
		CWS	29	27	25	30	30	22	30	24	30	25	26	16	25	339
		<b>Total</b>	<b>85</b>	<b>100</b>	<b>109</b>	<b>120</b>	<b>119</b>	<b>134</b>	<b>118</b>	<b>95</b>	<b>90</b>	<b>87</b>	<b>98</b>	<b>75</b>	<b>104</b>	<b>1,334</b>
	Hudson North	CPS	74	69	70	73	65	107	96	60	54	91	86	74	87	1,006
		CWS	26	30	22	29	19	28	27	18	16	22	31	29	30	327
		<b>Total</b>	<b>100</b>	<b>99</b>	<b>92</b>	<b>102</b>	<b>84</b>	<b>135</b>	<b>123</b>	<b>78</b>	<b>70</b>	<b>113</b>	<b>117</b>	<b>103</b>	<b>117</b>	<b>1,333</b>
	Hudson South	CPS	88	77	80	87	70	103	93	79	71	66	93	61	93	1,061
		CWS	17	23	32	31	23	46	29	23	19	31	28	22	28	352
		<b>Total</b>	<b>105</b>	<b>100</b>	<b>112</b>	<b>118</b>	<b>93</b>	<b>149</b>	<b>122</b>	<b>102</b>	<b>90</b>	<b>97</b>	<b>121</b>	<b>83</b>	<b>121</b>	<b>1,413</b>
	Hudson West	CPS	81	86	65	77	71	103	77	57	55	77	82	60	74	965
		CWS	27	29	18	25	15	25	31	20	20	25	33	21	15	304
		<b>Total</b>	<b>108</b>	<b>115</b>	<b>83</b>	<b>102</b>	<b>86</b>	<b>128</b>	<b>108</b>	<b>77</b>	<b>75</b>	<b>102</b>	<b>115</b>	<b>81</b>	<b>89</b>	<b>1,269</b>
County Totals	CPS	299	305	299	327	295	425	354	267	240	296	333	254	333	4,027	
	CWS	99	109	97	115	87	121	117	85	85	103	118	88	98	1,322	
	<b>Total</b>	<b>398</b>	<b>414</b>	<b>396</b>	<b>442</b>	<b>382</b>	<b>546</b>	<b>471</b>	<b>352</b>	<b>325</b>	<b>399</b>	<b>451</b>	<b>342</b>	<b>431</b>	<b>5,349</b>	
HUNTERDON	Hunterdon	CPS	46	19	39	28	33	32	32	35	27	41	40	27	27	426
		CWS	19	11	13	17	17	19	15	13	11	17	12	10	12	186
		<b>Total</b>	<b>65</b>	<b>30</b>	<b>52</b>	<b>45</b>	<b>50</b>	<b>51</b>	<b>47</b>	<b>48</b>	<b>38</b>	<b>58</b>	<b>52</b>	<b>37</b>	<b>39</b>	<b>612</b>
	County Totals	CPS	46	19	39	28	33	32	32	35	27	41	40	27	27	426
		<b>Total</b>	<b>65</b>	<b>30</b>	<b>52</b>	<b>45</b>	<b>50</b>	<b>51</b>	<b>47</b>	<b>48</b>	<b>38</b>	<b>58</b>	<b>52</b>	<b>37</b>	<b>39</b>	<b>612</b>
MERCER	Mercer North	CPS	81	97	78	82	98	94	92	70	82	87	115	79	89	1,144
		CWS	30	30	29	43	23	27	25	29	18	33	40	46	33	406
		<b>Total</b>	<b>111</b>	<b>127</b>	<b>107</b>	<b>125</b>	<b>121</b>	<b>121</b>	<b>117</b>	<b>99</b>	<b>100</b>	<b>120</b>	<b>155</b>	<b>125</b>	<b>122</b>	<b>1,550</b>
	Mercer South	CPS	96	87	75	110	94	96	103	76	107	107	125	98	100	1,274
		CWS	23	30	27	29	29	32	42	23	19	36	44	31	30	395
		<b>Total</b>	<b>119</b>	<b>117</b>	<b>102</b>	<b>139</b>	<b>123</b>	<b>128</b>	<b>145</b>	<b>99</b>	<b>126</b>	<b>143</b>	<b>169</b>	<b>129</b>	<b>130</b>	<b>1,669</b>
	County Totals	CPS	177	184	153	192	192	190	195	146	189	194	240	177	189	2,418
<b>Total</b>		<b>230</b>	<b>244</b>	<b>209</b>	<b>264</b>	<b>244</b>	<b>249</b>	<b>262</b>	<b>198</b>	<b>226</b>	<b>263</b>	<b>324</b>	<b>254</b>	<b>252</b>	<b>3,219</b>	

**Table 5: Monthly Count of CPS Reports and CWS Referrals Assigned to CP&P Local Offices**

County	Local Office	Type of Referral													Total	
			Dec 2014	Jan 2015	Feb 2015	Mar 2015	Apr 2015	May 2015	Jun 2015	Jul 2015	Aug 2015	Sep 2015	Oct 2015	Nov 2015		Dec 2015
MIDDLESEX	Middlesex Central	CPS	64	77	75	83	85	89	65	52	56	86	86	66	91	975
		CWS	24	27	16	20	21	27	17	25	18	28	27	20	27	297
		<b>Total</b>	<b>88</b>	<b>104</b>	<b>91</b>	<b>103</b>	<b>106</b>	<b>116</b>	<b>82</b>	<b>77</b>	<b>74</b>	<b>114</b>	<b>113</b>	<b>86</b>	<b>118</b>	<b>1,272</b>
	Middlesex Coastal	CPS	121	131	135	154	122	151	128	101	105	110	132	110	119	1,619
		CWS	37	32	46	49	34	37	44	43	24	33	35	38	33	485
		<b>Total</b>	<b>158</b>	<b>163</b>	<b>181</b>	<b>203</b>	<b>156</b>	<b>188</b>	<b>172</b>	<b>144</b>	<b>129</b>	<b>143</b>	<b>167</b>	<b>148</b>	<b>152</b>	<b>2,104</b>
	Middlesex West	CPS	124	129	155	139	122	138	132	94	84	105	132	118	114	1,586
		CWS	48	28	37	34	34	29	37	20	30	38	54	35	51	475
		<b>Total</b>	<b>172</b>	<b>157</b>	<b>192</b>	<b>173</b>	<b>156</b>	<b>167</b>	<b>169</b>	<b>114</b>	<b>114</b>	<b>143</b>	<b>186</b>	<b>153</b>	<b>165</b>	<b>2,061</b>
	County Totals	CPS	309	337	365	376	329	378	325	247	245	301	350	294	324	4,180
CWS		109	87	99	103	89	93	98	88	72	99	116	93	111	1,257	
<b>Total</b>		<b>418</b>	<b>424</b>	<b>464</b>	<b>479</b>	<b>418</b>	<b>471</b>	<b>423</b>	<b>335</b>	<b>317</b>	<b>400</b>	<b>466</b>	<b>387</b>	<b>435</b>	<b>5,437</b>	
MONMOUTH	Monmouth North	CPS	142	153	158	181	156	164	152	129	119	159	160	134	135	1,942
		CWS	50	30	50	47	40	43	39	37	33	58	51	50	47	575
		<b>Total</b>	<b>192</b>	<b>183</b>	<b>208</b>	<b>228</b>	<b>196</b>	<b>207</b>	<b>191</b>	<b>166</b>	<b>152</b>	<b>217</b>	<b>211</b>	<b>184</b>	<b>182</b>	<b>2,517</b>
	Monmouth South	CPS	118	109	122	171	146	128	125	108	111	118	118	118	95	1,587
		CWS	44	33	43	41	32	43	30	27	38	29	32	41	31	464
		<b>Total</b>	<b>162</b>	<b>142</b>	<b>165</b>	<b>212</b>	<b>178</b>	<b>171</b>	<b>155</b>	<b>135</b>	<b>149</b>	<b>147</b>	<b>150</b>	<b>159</b>	<b>126</b>	<b>2,051</b>
	County Totals	CPS	260	262	280	352	302	292	277	237	230	277	278	252	230	3,529
		CWS	94	63	93	88	72	86	69	64	71	87	83	91	78	1,039
		<b>Total</b>	<b>354</b>	<b>325</b>	<b>373</b>	<b>440</b>	<b>374</b>	<b>378</b>	<b>346</b>	<b>301</b>	<b>301</b>	<b>364</b>	<b>361</b>	<b>343</b>	<b>308</b>	<b>4,568</b>
	MORRIS	Morris East	CPS	62	70	70	80	84	74	74	61	59	85	95	68	47
CWS			25	30	21	28	21	23	22	27	20	29	26	27	27	326
<b>Total</b>			<b>87</b>	<b>100</b>	<b>91</b>	<b>108</b>	<b>105</b>	<b>97</b>	<b>96</b>	<b>88</b>	<b>79</b>	<b>114</b>	<b>121</b>	<b>95</b>	<b>74</b>	<b>1,255</b>
Morris West		CPS	67	101	83	84	70	102	92	69	74	100	87	90	98	1,117
		CWS	29	36	16	32	33	47	45	29	22	36	31	31	43	430
		<b>Total</b>	<b>96</b>	<b>137</b>	<b>99</b>	<b>116</b>	<b>103</b>	<b>149</b>	<b>137</b>	<b>98</b>	<b>96</b>	<b>136</b>	<b>118</b>	<b>121</b>	<b>141</b>	<b>1,547</b>
County Totals		CPS	129	171	153	164	154	176	166	130	133	185	182	158	145	2,046
		CWS	54	66	37	60	54	70	67	56	42	65	57	58	70	756
		<b>Total</b>	<b>183</b>	<b>237</b>	<b>190</b>	<b>224</b>	<b>208</b>	<b>246</b>	<b>233</b>	<b>186</b>	<b>175</b>	<b>250</b>	<b>239</b>	<b>216</b>	<b>215</b>	<b>2,802</b>
OCEAN		Ocean North	CPS	126	113	144	132	149	144	145	120	119	118	145	161	125
	CWS		39	32	36	54	45	52	38	34	39	43	32	57	43	544
	<b>Total</b>		<b>165</b>	<b>145</b>	<b>180</b>	<b>186</b>	<b>194</b>	<b>196</b>	<b>183</b>	<b>154</b>	<b>158</b>	<b>161</b>	<b>177</b>	<b>218</b>	<b>168</b>	<b>2,285</b>
	Ocean South	CPS	168	178	144	171	161	172	167	178	171	170	162	135	130	2,107
		CWS	48	51	40	41	47	50	38	44	40	45	44	48	38	574
		<b>Total</b>	<b>216</b>	<b>229</b>	<b>184</b>	<b>212</b>	<b>208</b>	<b>222</b>	<b>205</b>	<b>222</b>	<b>211</b>	<b>215</b>	<b>206</b>	<b>183</b>	<b>168</b>	<b>2,681</b>
	County Totals	CPS	294	291	288	303	310	316	312	298	290	288	307	296	255	3,848
		CWS	87	83	76	95	92	102	76	78	79	88	76	105	81	1,118
		<b>Total</b>	<b>381</b>	<b>374</b>	<b>364</b>	<b>398</b>	<b>402</b>	<b>418</b>	<b>388</b>	<b>376</b>	<b>369</b>	<b>376</b>	<b>383</b>	<b>401</b>	<b>336</b>	<b>4,966</b>
	PASSAIC	Passaic Central	CPS	179	132	149	161	143	221	152	118	133	159	161	163	178
CWS			59	44	45	77	63	67	58	52	55	55	91	66	68	800
<b>Total</b>			<b>238</b>	<b>176</b>	<b>194</b>	<b>238</b>	<b>206</b>	<b>288</b>	<b>210</b>	<b>170</b>	<b>188</b>	<b>214</b>	<b>252</b>	<b>229</b>	<b>246</b>	<b>2,849</b>
Passaic North		CPS	140	128	148	138	137	190	151	116	123	142	153	141	137	1,844
		CWS	39	57	45	67	46	56	51	31	34	66	56	52	66	666
		<b>Total</b>	<b>179</b>	<b>185</b>	<b>193</b>	<b>205</b>	<b>183</b>	<b>246</b>	<b>202</b>	<b>147</b>	<b>157</b>	<b>208</b>	<b>209</b>	<b>193</b>	<b>203</b>	<b>2,510</b>
County Totals		CPS	319	260	297	299	280	411	303	234	256	301	314	304	315	3,893
		CWS	98	101	90	144	109	123	109	83	89	121	147	118	134	1,466
		<b>Total</b>	<b>417</b>	<b>361</b>	<b>387</b>	<b>443</b>	<b>389</b>	<b>534</b>	<b>412</b>	<b>317</b>	<b>345</b>	<b>422</b>	<b>461</b>	<b>422</b>	<b>449</b>	<b>5,359</b>
SALEM		Salem	CPS	52	64	47	52	84	78	66	51	35	77	47	75	58
	CWS		14	23	13	19	12	27	15	17	18	25	25	14	23	245
	<b>Total</b>		<b>66</b>	<b>87</b>	<b>60</b>	<b>71</b>	<b>96</b>	<b>105</b>	<b>81</b>	<b>68</b>	<b>53</b>	<b>102</b>	<b>72</b>	<b>89</b>	<b>81</b>	<b>1,031</b>
	County Totals	CPS	52	64	47	52	84	78	66	51	35	77	47	75	58	786
		CWS	14	23	13	19	12	27	15	17	18	25	25	14	23	245
		<b>Total</b>	<b>66</b>	<b>87</b>	<b>60</b>	<b>71</b>	<b>96</b>	<b>105</b>	<b>81</b>	<b>68</b>	<b>53</b>	<b>102</b>	<b>72</b>	<b>89</b>	<b>81</b>	<b>1,031</b>
SOMERSET	Somerset	CPS	98	100	101	111	117	131	122	126	88	120	121	121	104	1,460
		CWS	34	26	30	42	37	47	41	32	40	35	32	36	39	471
		<b>Total</b>	<b>132</b>	<b>126</b>	<b>131</b>	<b>153</b>	<b>154</b>	<b>178</b>	<b>163</b>	<b>158</b>	<b>128</b>	<b>155</b>	<b>153</b>	<b>157</b>	<b>143</b>	<b>1,931</b>
	County Totals	CPS	98	100	101	111	117	131	122	126	88	120	121	121	104	1,460
		<b>Total</b>	<b>132</b>	<b>126</b>	<b>131</b>	<b>153</b>	<b>154</b>	<b>178</b>	<b>163</b>	<b>158</b>	<b>128</b>	<b>155</b>	<b>153</b>	<b>157</b>	<b>143</b>	<b>1,931</b>

**Table 5: Monthly Count of CPS Reports and CWS Referrals Assigned to CP&P Local Offices**

County	Local Office	Type of Referral													Total	
			Dec 2014	Jan 2015	Feb 2015	Mar 2015	Apr 2015	May 2015	Jun 2015	Jul 2015	Aug 2015	Sep 2015	Oct 2015	Nov 2015		Dec 2015
SUSSEX	Sussex	CPS	70	66	64	80	84	74	77	86	71	73	83	72	68	968
		CWS	21	20	21	29	20	23	35	17	13	16	21	31	27	294
		<b>Total</b>	<b>91</b>	<b>86</b>	<b>85</b>	<b>109</b>	<b>104</b>	<b>97</b>	<b>112</b>	<b>103</b>	<b>84</b>	<b>89</b>	<b>104</b>	<b>103</b>	<b>95</b>	<b>1,262</b>
	County Totals	CPS	70	66	64	80	84	74	77	86	71	73	83	72	68	968
		CWS	21	20	21	29	20	23	35	17	13	16	21	31	27	294
		<b>Total</b>	<b>91</b>	<b>86</b>	<b>85</b>	<b>109</b>	<b>104</b>	<b>97</b>	<b>112</b>	<b>103</b>	<b>84</b>	<b>89</b>	<b>104</b>	<b>103</b>	<b>95</b>	<b>1,262</b>
UNION	Union Central	CPS	67	91	75	86	81	85	83	56	52	65	67	64	71	943
		CWS	15	21	19	30	21	19	20	25	26	24	24	14	27	285
		<b>Total</b>	<b>82</b>	<b>112</b>	<b>94</b>	<b>116</b>	<b>102</b>	<b>104</b>	<b>103</b>	<b>81</b>	<b>78</b>	<b>89</b>	<b>91</b>	<b>78</b>	<b>98</b>	<b>1,228</b>
	Union East	CPS	82	72	73	92	85	69	80	51	49	67	74	68	91	953
		CWS	27	34	24	43	27	33	32	8	23	27	35	26	34	373
		<b>Total</b>	<b>109</b>	<b>106</b>	<b>97</b>	<b>135</b>	<b>112</b>	<b>102</b>	<b>112</b>	<b>59</b>	<b>72</b>	<b>94</b>	<b>109</b>	<b>94</b>	<b>125</b>	<b>1,326</b>
	Union West	CPS	69	75	66	81	64	71	62	59	50	70	77	58	65	867
		CWS	28	29	21	28	29	22	28	29	15	23	27	27	30	336
		<b>Total</b>	<b>97</b>	<b>104</b>	<b>87</b>	<b>109</b>	<b>93</b>	<b>93</b>	<b>90</b>	<b>88</b>	<b>65</b>	<b>93</b>	<b>104</b>	<b>85</b>	<b>95</b>	<b>1,203</b>
	County Totals	CPS	218	238	214	259	230	225	225	166	151	202	218	190	227	2,763
		CWS	70	84	64	101	77	74	80	62	64	74	86	67	91	994
		<b>Total</b>	<b>288</b>	<b>322</b>	<b>278</b>	<b>360</b>	<b>307</b>	<b>299</b>	<b>305</b>	<b>228</b>	<b>215</b>	<b>276</b>	<b>304</b>	<b>257</b>	<b>318</b>	<b>3,757</b>
WARREN	Warren	CPS	74	68	87	66	82	84	78	71	71	81	87	58	55	962
		CWS	28	29	32	26	19	33	24	18	23	20	20	23	23	318
		<b>Total</b>	<b>102</b>	<b>97</b>	<b>119</b>	<b>92</b>	<b>101</b>	<b>117</b>	<b>102</b>	<b>89</b>	<b>94</b>	<b>101</b>	<b>107</b>	<b>81</b>	<b>78</b>	<b>1,280</b>
	County Totals	CPS	74	68	87	66	82	84	78	71	71	81	87	58	55	962
		CWS	28	29	32	26	19	33	24	18	23	20	20	23	23	318
		<b>Total</b>	<b>102</b>	<b>97</b>	<b>119</b>	<b>92</b>	<b>101</b>	<b>117</b>	<b>102</b>	<b>89</b>	<b>94</b>	<b>101</b>	<b>107</b>	<b>81</b>	<b>78</b>	<b>1,280</b>
<b>County CPS Referral Total</b>	CPS	<b>4,164</b>	<b>4,252</b>	<b>4,250</b>	<b>4,849</b>	<b>4,614</b>	<b>5,060</b>	<b>4,508</b>	<b>3,842</b>	<b>3,714</b>	<b>4,477</b>	<b>4,797</b>	<b>4,098</b>	<b>4,252</b>	<b>56,877</b>	
<b>County CWS Referral Total</b>	CWS	<b>1,402</b>	<b>1,337</b>	<b>1,290</b>	<b>1,536</b>	<b>1,341</b>	<b>1,511</b>	<b>1,385</b>	<b>1,223</b>	<b>1,220</b>	<b>1,446</b>	<b>1,572</b>	<b>1,430</b>	<b>1,492</b>	<b>18,185</b>	
<b>County Referral Total</b>	<b>Total</b>	<b>5,566</b>	<b>5,589</b>	<b>5,540</b>	<b>6,385</b>	<b>5,955</b>	<b>6,571</b>	<b>5,893</b>	<b>5,065</b>	<b>4,934</b>	<b>5,923</b>	<b>6,369</b>	<b>5,528</b>	<b>5,744</b>	<b>75,062</b>	
Central Region IAIU	CPS	61	48	50	50	51	54	54	63	41	53	52	56	62	695	
	CWS	0	0	0	0	0	0	0	0	0	0	0	0	0	0	
	<b>Total</b>	<b>61</b>	<b>48</b>	<b>50</b>	<b>50</b>	<b>51</b>	<b>54</b>	<b>54</b>	<b>63</b>	<b>41</b>	<b>53</b>	<b>52</b>	<b>56</b>	<b>62</b>	<b>695</b>	
Metro Region IAIU	CPS	49	53	59	67	54	70	66	24	30	36	50	48	46	652	
	CWS	0	0	0	0	0	0	0	0	0	0	0	0	0	0	
	<b>Total</b>	<b>49</b>	<b>53</b>	<b>59</b>	<b>67</b>	<b>54</b>	<b>70</b>	<b>66</b>	<b>24</b>	<b>30</b>	<b>36</b>	<b>50</b>	<b>48</b>	<b>46</b>	<b>652</b>	
Northern Region IAIU	CPS	67	62	61	73	70	80	65	56	43	45	66	58	44	790	
	CWS	0	0	0	0	0	0	0	0	0	0	0	0	0	0	
	<b>Total</b>	<b>67</b>	<b>62</b>	<b>61</b>	<b>73</b>	<b>70</b>	<b>80</b>	<b>65</b>	<b>56</b>	<b>43</b>	<b>45</b>	<b>66</b>	<b>58</b>	<b>44</b>	<b>790</b>	
Southern Region IAIU	CPS	89	60	68	68	78	97	88	61	59	60	83	72	61	944	
	CWS	0	0	0	0	0	0	0	0	0	0	0	0	0	0	
	<b>Total</b>	<b>89</b>	<b>60</b>	<b>68</b>	<b>68</b>	<b>78</b>	<b>97</b>	<b>88</b>	<b>61</b>	<b>59</b>	<b>60</b>	<b>83</b>	<b>72</b>	<b>61</b>	<b>944</b>	
<b>IAIU CPS Subtotal</b>	CPS	<b>266</b>	<b>223</b>	<b>238</b>	<b>258</b>	<b>253</b>	<b>301</b>	<b>273</b>	<b>204</b>	<b>173</b>	<b>194</b>	<b>251</b>	<b>234</b>	<b>213</b>	<b>3,081</b>	
<b>IAIU CWS Subtotal</b>	CWS	<b>0</b>	<b>0</b>	<b>0</b>	<b>0</b>	<b>0</b>	<b>0</b>	<b>0</b>	<b>0</b>	<b>0</b>	<b>0</b>	<b>1</b>	<b>0</b>	<b>0</b>	<b>1</b>	
<b>IAIU Subtotal</b>	<b>Total</b>	<b>266</b>	<b>223</b>	<b>238</b>	<b>258</b>	<b>253</b>	<b>301</b>	<b>273</b>	<b>204</b>	<b>173</b>	<b>194</b>	<b>252</b>	<b>234</b>	<b>213</b>	<b>3,082</b>	
<b>County and IAIU CPS Subtotal</b>	CPS	<b>4,430</b>	<b>4,475</b>	<b>4,488</b>	<b>5,107</b>	<b>4,867</b>	<b>5,361</b>	<b>4,781</b>	<b>4,046</b>	<b>3,887</b>	<b>4,671</b>	<b>5,048</b>	<b>4,332</b>	<b>4,465</b>	<b>59,958</b>	
<b>County and IAIU CWS Subtotal</b>	CWS	<b>1,402</b>	<b>1,337</b>	<b>1,290</b>	<b>1,536</b>	<b>1,341</b>	<b>1,511</b>	<b>1,385</b>	<b>1,223</b>	<b>1,220</b>	<b>1,446</b>	<b>1,573</b>	<b>1,430</b>	<b>1,492</b>	<b>18,186</b>	
<b>Unable to Determine<sup>(1)</sup></b>	<b>Total</b>	<b>123</b>	<b>127</b>	<b>138</b>	<b>118</b>	<b>141</b>	<b>144</b>	<b>153</b>	<b>142</b>	<b>124</b>	<b>153</b>	<b>136</b>	<b>131</b>	<b>114</b>	<b>1,744</b>	
<b>Other Offices</b>	<b>Total</b>	<b>1</b>	<b>1</b>	<b>3</b>	<b>6</b>	<b>2</b>	<b>2</b>	<b>4</b>	<b>2</b>	<b>3</b>	<b>1</b>	<b>1</b>	<b>1</b>	<b>3</b>	<b>30</b>	
<b>Grand Total</b>	<b>Total</b>	<b>5,956</b>	<b>5,940</b>	<b>5,919</b>	<b>6,767</b>	<b>6,351</b>	<b>7,018</b>	<b>6,323</b>	<b>5,413</b>	<b>5,234</b>	<b>6,271</b>	<b>6,758</b>	<b>5,894</b>	<b>6,074</b>	<b>79,918</b>	

<sup>(1)</sup>CPS Reports or CWS Referrals not assigned to an office through the Assignment Designee, but were assigned to an office for an assessment or investigation.