



## **Child Protection and Permanency**

# **Monthly Screening and Investigation Report October 2014**

Allison Blake, Ph.D., L.S.W.  
Commissioner

November 20, 2014



NEW JERSEY DEPARTMENT OF  
CHILDREN AND FAMILIES

## Table of Contents

Table 1: NJ State Central Registry Activity: Monthly Child Abuse and Neglect Hotline Calls, Intakes and Assignments to Child Protection & Permanency (CP&P) Offices

---

Chart 1: CP&P Annual Trends in Child Protection Services (CPS) Reports and Child Welfare Services (CWS) Referrals

---

Table 2: Assignments to CP&P Offices: CPS Reports and CWS Referrals

---

Table 3: Source of CPS Reports and CWS Referrals

---

Table 4: Monthly Count of CPS Reports and CWS Referrals Assigned to Counties

---

Table 5: Monthly Count of CPS Reports and CWS Referrals Assigned to CP&P Local Offices

---

**Table 1: NJ State Central Registry Activity: Monthly Child Abuse and Neglect Hotline Calls, Intakes and Assignments to CP&P Offices<sup>1,2,6</sup>**

2013 - 2014	Hotline Call Activity		Intakes Recorded in NJ SPIRIT <sup>5,7</sup>												Assignments to CP&P Offices				
	Total Calls <sup>3</sup>	Resulting Intakes <sup>4</sup>	CPS Reports		CWS Referrals		No Action Required (NAR)		Related Information (RI)		Information & Referral (I&R)		Information Only (IO)		CPS Reports		CWS Referrals		Total Assignments
			n	%	n	%	n	%	n	%	n	%	n	%	n	%	n	%	
October 2013	15,671	17,315	5,563	32.1%	1,530	8.8%	483	2.8%	4,308	24.9%	1,999	11.5%	3,432	19.8%	5,563	78.4%	1,532	21.6%	7,095
November 2013	13,950	15,260	4,687	30.7%	1,343	8.8%	261	1.7%	4,277	28.0%	1,586	10.4%	3,106	20.4%	4,686	77.7%	1,342	22.3%	6,028
December 2013	12,568	13,962	4,365	31.3%	1,260	9.0%	391	2.8%	3,445	24.7%	1,554	11.1%	2,947	21.1%	4,365	77.6%	1,261	22.4%	5,626
January 2014	15,091	16,412	5,097	31.1%	1,416	8.6%	346	2.1%	4,233	25.8%	1,728	10.5%	3,592	21.9%	5,097	78.3%	1,416	21.7%	6,513
February 2014	13,092	14,377	4,458	31.0%	1,293	9.0%	306	2.1%	3,838	26.7%	1,395	9.7%	3,087	21.5%	4,457	77.5%	1,295	22.5%	5,752
March 2014	15,236	16,707	5,408	32.4%	1,585	9.5%	363	2.2%	4,257	25.5%	1,774	10.6%	3,320	19.9%	5,408	77.3%	1,586	22.7%	6,994
April 2014	14,056	15,642	5,052	32.3%	1,467	9.4%	400	2.6%	3,846	24.6%	1,676	10.7%	3,201	20.5%	5,049	77.5%	1,467	22.5%	6,516
May 2014	15,690	17,101	5,501	32.2%	1,635	9.6%	396	2.3%	4,444	26.0%	1,816	10.6%	3,309	19.3%	5,501	77.1%	1,635	22.9%	7,136
June 2014	13,809	15,171	4,796	31.6%	1,516	10.0%	402	2.6%	4,028	26.6%	1,625	10.7%	2,804	18.5%	4,796	76.0%	1,517	24.0%	6,313
July 2014	12,308	13,784	4,202	30.5%	1,247	9.0%	384	2.8%	3,758	27.3%	1,487	10.8%	2,706	19.6%	4,202	77.1%	1,247	22.9%	5,449
August 2014	11,306	12,610	3,629	28.8%	1,222	9.7%	331	2.6%	3,314	26.3%	1,321	10.5%	2,793	22.1%	3,629	74.8%	1,222	25.2%	4,851
September 2014	13,664	15,190	4,668	30.7%	1,496	9.8%	393	2.6%	3,949	26.0%	1,792	11.8%	2,892	19.0%	4,668	75.7%	1,498	24.3%	6,166
<b>October 2014</b>	<b>15,268</b>	<b>16,868</b>	<b>5,510</b>	<b>32.7%</b>	<b>1,584</b>	<b>9.4%</b>	<b>555</b>	<b>3.3%</b>	<b>4,259</b>	<b>25.2%</b>	<b>1,946</b>	<b>11.5%</b>	<b>3,014</b>	<b>17.9%</b>	<b>5,509</b>	<b>77.6%</b>	<b>1,586</b>	<b>22.4%</b>	<b>7,095</b>
<b>Monthly Average</b>	<b>13,978</b>	<b>15,415</b>	<b>4,841</b>	<b>31.4%</b>	<b>1,430</b>	<b>9.3%</b>	<b>385</b>	<b>2.5%</b>	<b>3,997</b>	<b>25.9%</b>	<b>1,669</b>	<b>10.8%</b>	<b>3,093</b>	<b>20.1%</b>	<b>4,841</b>	<b>77.2%</b>	<b>1,431</b>	<b>22.8%</b>	<b>6,272</b>
<b>Overall Total</b>	<b>181,709</b>		<b>62,936</b>		<b>18,594</b>		<b>5,011</b>		<b>51,956</b>		<b>21,699</b>		<b>40,203</b>		<b>62,930</b>	<b>77.2%</b>	<b>18,604</b>	<b>22.8%</b>	<b>81,534</b>

<sup>1</sup>Comes from three distinct sources: (1) the Automatic Call Distribution (ACD) phone system; which keeps a count of the number of calls and call routing; (2) Monthly NJSpirit Intakes; which record decision making on calls received by hotline screeners, and (3) NJSpirit extracts of assigned CWS Referrals and CPS Reports.

<sup>2</sup>The number of Intakes, CPS Reports, and CWS Referrals are based on an extract from NJSpirit. Data extracted by the Office of Research, Evaluation, and Reporting on **November 10, 2014** includes all Intakes, CPS Reports, and CWS Referrals received from October 1, 2014 through October 31, 2014.

<sup>3</sup>The number calls received through the ACD System that were directed to a screener from any call-in phone number.

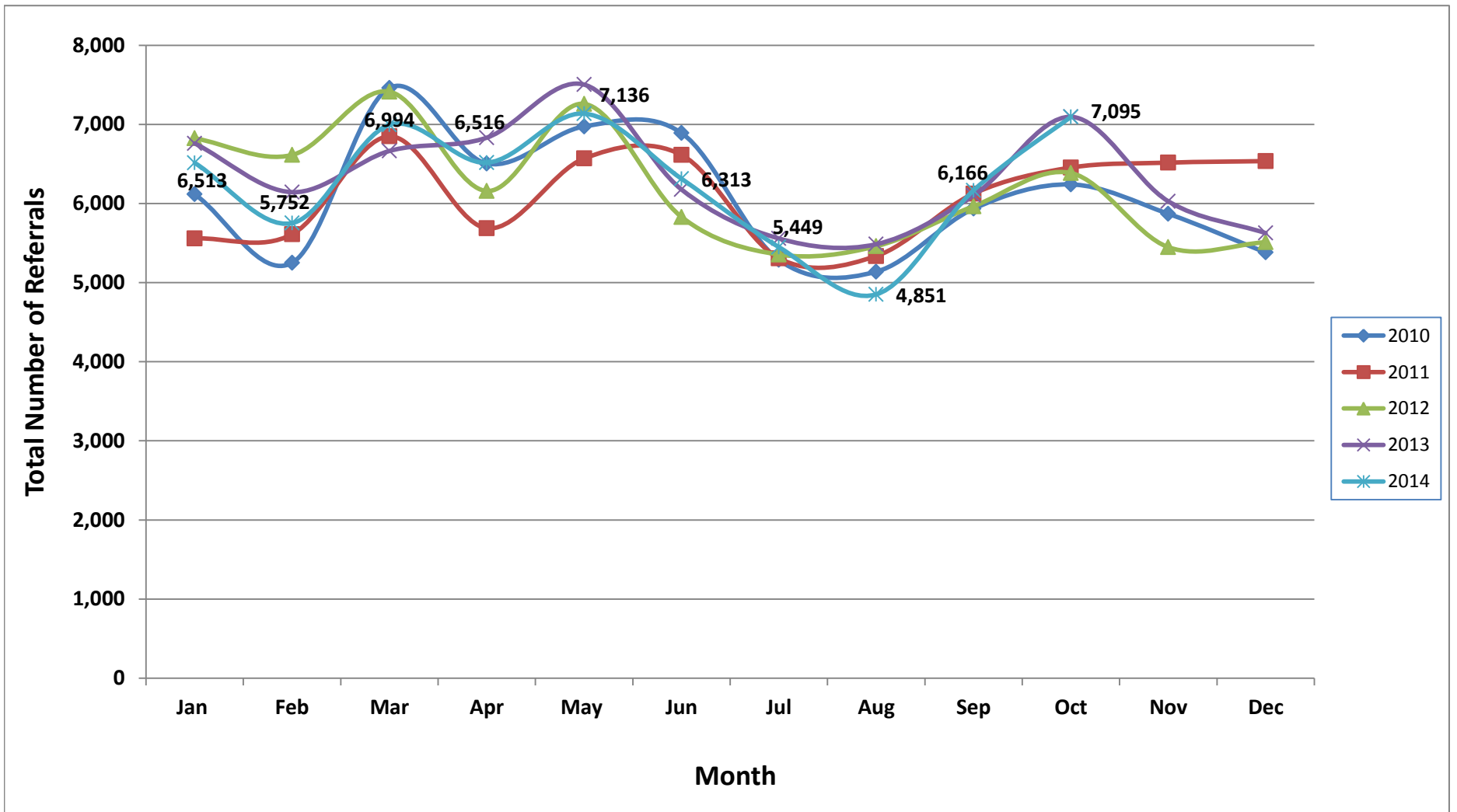
<sup>4</sup>The number of Intakes entered in NJSpirit from the number of calls received.

<sup>5</sup>The number of Intakes recorded in NJSpirit, by type of Intake. There is not a one-to-one relationship between an ACD call and an Intake; multiple calls to State Central Registry (SCR) may result in a single Intake, or one call may result in multiple Intakes.

<sup>6</sup>Intake: The process of documenting: a report of alleged abuse or neglect of a child (CPS); a request for services on behalf of a child, or a referral of a child for services (CWS); a call in which the caller provides additional or clarifying information about a current service case or active investigation (RI); informing a caller of, or referring a caller to, services available from other private or public sources (I&R); a call that requires no action by CP&P (NAR); or a response to a simple inquiry (IO).

<sup>7</sup>NJ SPIRIT: NJ Statewide Protection Investigation and Reporting Information Tool case management system

### CP&P Annual Trends in CPS Reports and CWS Referrals



**Table 2: Assignments to CP&P Offices: CPS Reports and CWS Referrals<sup>1</sup>**

Intake Date		CPS Reports <sup>2,3</sup>	CWS Referrals <sup>2,3</sup>	Total Assignments <sup>2,3</sup>
2010	Jan 2010	5,154	963	6,117
	Feb 2010	4,446	804	5,250
	Mar 2010	6,314	1,147	7,461
	Apr 2010	5,465	1,040	6,505
	May 2010	5,797	1,177	6,974
	Jun 2010	5,734	1,157	6,891
	Jul 2010	4,270	1,017	5,287
	Aug 2010	4,110	1,028	5,138
	Sep 2010	4,922	1,012	5,934
	Oct 2010	5,105	1,136	6,241
	Nov 2010	4,842	1,028	5,870
	Dec 2010	4,472	909	5,381
	<b>Total</b>	<b>60,631</b>	<b>12,418</b>	<b>73,049</b>
2011	Jan 2011	4,616	942	5,558
	Feb 2011	4,672	939	5,611
	Mar 2011	5,701	1,148	6,849
	Apr 2011	4,682	1,005	5,687
	May 2011	5,362	1,207	6,569
	Jun 2011	5,299	1,315	6,614
	Jul 2011	4,200	1,108	5,308
	Aug 2011	4,170	1,166	5,336
	Sep 2011	4,872	1,253	6,125
	Oct 2011	5,322	1,132	6,454
	Nov 2011	5,220	1,296	6,516
	Dec 2011	5,363	1,173	6,536
	<b>Total</b>	<b>59,479</b>	<b>13,684</b>	<b>73,163</b>
2012	Jan 2012	5,530	1,294	6,824
	Feb 2012	5,358	1,255	6,613
	Mar 2012	5,985	1,428	7,413
	Apr 2012	4,899	1,259	6,158
	May 2012	5,874	1,385	7,259
	June 2012	4,640	1,190	5,830
	July 2012	4,254	1,101	5,355
	Aug 2012	4,325	1,135	5,460
	Sep 2012	4,769	1,196	5,965
	Oct 2012	5,178	1,207	6,385
	Nov 2012	4,310	1,138	5,448
	Dec 2012	4,394	1,116	5,510
	<b>Total</b>	<b>59,516</b>	<b>14,704</b>	<b>74,220</b>

**Table 2: Assignments to CP&P Offices: CPS Reports and CWS Referrals<sup>1</sup>**

Intake Date		CPS Reports <sup>2,3</sup>	CWS Referrals <sup>2,3</sup>	Total Assignments <sup>2,3</sup>
2013	Jan 2013	5,464	1,296	6,760
	Feb 2013	4,966	1,177	6,143
	Mar 2013	5,355	1,309	6,664
	Apr 2013	5,430	1,402	6,832
	May 2013	5,993	1,510	7,503
	June 2013	4,947	1,230	6,177
	July 2013	4,330	1,228	5,558
	Aug 2013	4,330	1,155	5,485
	Sep 2013	4,851	1,251	6,102
	Oct 2013	5,614	1,481	7,095
	Nov 2013	4,694	1,334	6,028
	Dec 2013	4,397	1,229	5,626
	<b>Total</b>	<b>60,371</b>	<b>15,602</b>	<b>75,973</b>
2014	Jan 2014	5,138	1,375	6,513
	Feb 2014	4,499	1,253	5,752
	Mar 2014	5,438	1,556	6,994
	Apr 2014	5,105	1,411	6,516
	May 2014	5,541	1,595	7,136
	June 2014	4,842	1,471	6,313
	July 2014	4,228	1,221	5,449
	Aug 2014	3,652	1,199	4,851
	Sep 2014	4,705	1,461	6,166
	Oct 2014	5,552	1,543	7,095
	<b>Total</b>	<b>48,700</b>	<b>14,085</b>	<b>62,785</b>
<b>Grand Total</b>		<b>288,697</b>	<b>70,493</b>	<b>359,190</b>

<sup>1</sup>Source of Data: NJ SPIRIT

<sup>2</sup>A CPS Report or a CWS Referral may include multiple children in a family, with one or more allegation or request for services. In these cases, each CPS Report or CWS Referral is counted once - the CPS Report or the CWS Referral is the unit of analysis rather than the child.

<sup>3</sup>Includes CPS Reports and CWS Referrals with an assignment to an office via the Assignment Designee process.

**Table 3: Source of CPS Reports and CWS Referrals**

	Source	Oct 2013	Nov 2013	Dec 2013	Jan 2014	Feb 2014	Mar 2014	Apr 2014	May 2014	Jun 2014	Jul 2014	Aug 2014	Sep 2014	Oct 2014	13 Month Total			
<b>CPS Reports and CWS Referrals</b>	School Staff	1,854	1,455	1,222	1,672	1,488	2,000	1,523	1,861	1,216	200	90	1,200	<b>1,935</b>	<b>27%</b>	17,716	22%	
	Healthcare Provider	863	751	696	850	699	855	878	818	806	860	704	774	<b>824</b>	<b>12%</b>	10,378	13%	
	Law Enforcement	840	855	756	845	760	900	853	994	955	961	934	922	<b>898</b>	<b>13%</b>	11,473	14%	
	Government Agency	520	445	417	437	402	451	475	504	472	480	429	470	<b>474</b>	<b>7%</b>	5,976	7%	
	Parent	561	523	561	561	477	526	525	666	666	554	593	549	591	<b>603</b>	<b>8%</b>	7,290	9%
	Relative/Friend/Neighbor	548	424	446	494	415	460	533	577	577	596	688	586	553	<b>568</b>	<b>8%</b>	6,888	8%
	Anonymous	903	742	683	776	661	803	740	741	741	723	609	640	661	<b>772</b>	<b>11%</b>	9,454	12%
	CP&P	116	91	93	109	100	126	111	128	128	148	139	111	119	<b>113</b>	<b>2%</b>	1,504	2%
	Court/Legal	148	84	108	102	110	145	142	116	116	120	138	122	111	<b>129</b>	<b>2%</b>	1,575	2%
	Community Group/Individual	238	218	188	249	224	248	275	269	269	241	274	241	271	<b>270</b>	<b>4%</b>	3,206	4%
	Facility Staff (incl Correctional Facility)	95	81	72	79	91	96	74	69	69	96	94	88	72	<b>92</b>	<b>1%</b>	1,099	1%
	Child (Self)	52	49	45	46	38	41	55	44	44	56	52	38	63	<b>47</b>	<b>1%</b>	626	1%
	Other	336	294	321	283	279	327	317	334	334	318	350	312	342	<b>354</b>	<b>5%</b>	4,167	5%
	Daycare/Babysitter	21	16	18	10	8	16	15	15	15	12	11	7	17	<b>16</b>	<b>0%</b>	182	0%
	<b>Total</b>	<b>7,095</b>	<b>6,028</b>	<b>5,626</b>	<b>6,513</b>	<b>5,752</b>	<b>6,994</b>	<b>6,516</b>	<b>7,136</b>	<b>6,313</b>	<b>5,449</b>	<b>4,851</b>	<b>6,166</b>	<b>7,095</b>		<b>81,534</b>		

**Table 4: Monthly Count of CPS Reports and CWS Referrals Assigned to Counties**

County														Average # of Assignments the Last 12 Months	Sep 14 to Oct 14 Numerical Difference	Oct 13 to Oct 14 Numerical Difference
	Oct 2013	Nov 2013	Dec 2013	Jan 2014	Feb 2014	Mar 2014	Apr 2014	May 2014	Jun 2014	Jul 2014	Aug 2014	Sep 2014	Oct 2014			
Atlantic	280	223	218	256	233	267	242	288	234	229	221	233	292	245	59	12
Bergen	385	344	314	359	307	342	334	378	295	228	235	337	392	322	55	7
Burlington	362	256	233	318	278	342	312	351	279	242	248	251	335	287	84	-27
Camden	553	485	494	483	464	495	547	567	528	490	400	537	594	507	57	41
Cape May	94	61	82	89	84	74	87	112	64	96	92	95	87	85	-8	-7
Cumberland	262	210	183	197	214	208	222	247	210	218	147	214	224	208	10	-38
Essex	712	653	574	651	563	762	664	753	632	536	516	630	725	638	95	13
Gloucester	261	248	213	259	258	266	234	297	295	254	206	261	300	258	39	39
Hudson	506	441	429	493	399	537	437	509	466	338	275	446	532	442	86	26
Hunterdon	64	44	43	65	51	68	50	59	41	57	39	50	47	51	-3	-17
Mercer	253	237	215	251	228	296	279	299	279	246	203	261	294	257	33	41
Middlesex	503	395	366	454	366	499	438	475	400	336	284	413	458	407	45	-45
Monmouth	386	354	337	373	357	429	379	400	388	293	334	375	413	369	38	27
Morris	231	206	206	242	209	224	237	250	214	198	195	223	237	220	14	6
Ocean	448	385	340	432	350	429	369	411	416	372	316	384	456	388	72	8
Passaic	467	381	388	394	328	471	472	478	402	340	299	384	427	397	43	-40
Salem	97	74	72	85	76	77	79	85	75	76	82	101	96	82	-5	-1
Somerset	190	148	132	174	159	196	171	159	180	125	119	139	152	155	13	-38
Sussex	102	110	73	115	86	88	106	116	92	96	75	87	84	94	-3	-18
Union	360	295	302	329	303	337	347	306	303	245	204	286	354	301	68	-6
Warren	105	85	96	95	106	111	103	99	99	77	73	93	113	96	20	8
<b>County Subtotals</b>	<b>6,621</b>	<b>5,635</b>	<b>5,310</b>	<b>6,114</b>	<b>5,419</b>	<b>6,518</b>	<b>6,109</b>	<b>6,639</b>	<b>5,892</b>	<b>5,092</b>	<b>4,563</b>	<b>5,800</b>	<b>6,612</b>	<b>5,809</b>	<b>812</b>	<b>-9</b>
Central Region IAIU	80	61	35	63	54	60	60	75	60	54	40	55	70	57	15	-10
Metro Region IAIU	59	49	47	42	44	91	63	57	69	43	26	47	70	54	23	11
Northern Region IAIU	83	67	63	77	66	88	60	85	59	50	41	58	80	66	22	-3
Southern Region IAIU	108	70	54	69	50	78	79	106	74	61	52	64	85	70	21	-23
<b>IAIU Subtotals</b>	<b>330</b>	<b>247</b>	<b>199</b>	<b>251</b>	<b>214</b>	<b>317</b>	<b>262</b>	<b>323</b>	<b>262</b>	<b>208</b>	<b>159</b>	<b>224</b>	<b>305</b>	<b>248</b>	<b>81</b>	<b>-25</b>
<b>Unable to Determine<sup>1</sup></b>	<b>142</b>	<b>144</b>	<b>115</b>	<b>146</b>	<b>119</b>	<b>155</b>	<b>143</b>	<b>171</b>	<b>156</b>	<b>149</b>	<b>129</b>	<b>141</b>	<b>174</b>	<b>145</b>	<b>33</b>	<b>32</b>
<b>Other Offices</b>	<b>2</b>	<b>2</b>	<b>2</b>	<b>2</b>	<b>0</b>	<b>4</b>	<b>2</b>	<b>3</b>	<b>3</b>	<b>0</b>	<b>0</b>	<b>1</b>	<b>4</b>	<b>2</b>		<b>2</b>
<b>Grand Total</b>	<b>7,095</b>	<b>6,028</b>	<b>5,626</b>	<b>6,513</b>	<b>5,752</b>	<b>6,994</b>	<b>6,516</b>	<b>7,136</b>	<b>6,313</b>	<b>5,449</b>	<b>4,851</b>	<b>6,166</b>	<b>7,095</b>	<b>6,203</b>	<b>929</b>	<b>0</b>

<sup>1</sup>CPS Reports or CWS Referrals not assigned to an office through the Assignment Designee, but were assigned to an office for an assessment or investigation.

Greatest One Month County Decrease (Numeric)



Greatest One Month County Increase (Numeric)





**Table 5: Monthly Count of CPS Reports and CWS Referrals Assigned to CP&P Local Offices**

County	Local Office	Type of Referral	Referral Month												Total	
			Oct 2013	Nov 2013	Dec 2013	Jan 2014	Feb 2014	Mar 2014	Apr 2014	May 2014	Jun 2014	Jul 2014	Aug 2014	Sep 2014		Oct 2014
ATLANTIC	Atlantic East	CPS	142	107	94	118	93	116	117	124	94	104	98	108	125	1,440
		CWS	32	30	25	31	36	36	28	32	27	23	32	23	35	390
		<b>Total</b>	<b>174</b>	<b>137</b>	<b>119</b>	<b>149</b>	<b>129</b>	<b>152</b>	<b>145</b>	<b>156</b>	<b>121</b>	<b>127</b>	<b>130</b>	<b>131</b>	<b>160</b>	<b>1,830</b>
	Atlantic West	CPS	82	75	76	80	84	94	75	107	89	75	71	82	103	1,093
		CWS	24	11	23	27	20	21	22	25	24	27	20	20	29	293
		<b>Total</b>	<b>106</b>	<b>86</b>	<b>99</b>	<b>107</b>	<b>104</b>	<b>115</b>	<b>97</b>	<b>132</b>	<b>113</b>	<b>102</b>	<b>91</b>	<b>102</b>	<b>132</b>	<b>1,386</b>
	County Totals	CPS	224	182	170	198	177	210	192	231	183	179	169	190	228	2,533
		CWS	56	41	48	58	56	57	50	57	51	50	52	43	64	683
		<b>Total</b>	<b>280</b>	<b>223</b>	<b>218</b>	<b>256</b>	<b>233</b>	<b>267</b>	<b>242</b>	<b>288</b>	<b>234</b>	<b>229</b>	<b>221</b>	<b>233</b>	<b>292</b>	<b>3,216</b>
BERGEN	Bergen Central	CPS	127	115	90	114	97	127	115	121	97	68	67	107	111	1,356
		CWS	55	33	29	39	25	35	39	45	31	23	24	38	51	467
		<b>Total</b>	<b>182</b>	<b>148</b>	<b>119</b>	<b>153</b>	<b>122</b>	<b>162</b>	<b>154</b>	<b>166</b>	<b>128</b>	<b>91</b>	<b>91</b>	<b>145</b>	<b>162</b>	<b>1,823</b>
	Bergen South	CPS	158	149	149	162	137	145	136	163	129	99	102	142	181	1,852
		CWS	45	47	46	44	48	35	44	49	38	38	42	50	49	575
		<b>Total</b>	<b>203</b>	<b>196</b>	<b>195</b>	<b>206</b>	<b>185</b>	<b>180</b>	<b>180</b>	<b>212</b>	<b>167</b>	<b>137</b>	<b>144</b>	<b>192</b>	<b>230</b>	<b>2,427</b>
	County Totals	CPS	285	264	239	276	234	272	251	284	226	167	169	249	292	3,208
		CWS	100	80	75	83	73	70	83	94	69	61	66	88	100	1,042
		<b>Total</b>	<b>385</b>	<b>344</b>	<b>314</b>	<b>359</b>	<b>307</b>	<b>342</b>	<b>334</b>	<b>378</b>	<b>295</b>	<b>228</b>	<b>235</b>	<b>337</b>	<b>392</b>	<b>4,250</b>
BURLINGTON	Burlington East	CPS	150	99	89	120	104	128	119	132	103	98	89	88	115	1,434
		CWS	38	21	31	29	27	40	23	37	32	27	35	32	38	410
		<b>Total</b>	<b>188</b>	<b>120</b>	<b>120</b>	<b>149</b>	<b>131</b>	<b>168</b>	<b>142</b>	<b>169</b>	<b>135</b>	<b>125</b>	<b>124</b>	<b>120</b>	<b>153</b>	<b>1,844</b>
	Burlington West	CPS	142	113	83	139	108	139	133	141	111	94	90	89	145	1,527
		CWS	32	23	30	30	39	35	37	41	33	23	34	42	37	436
		<b>Total</b>	<b>174</b>	<b>136</b>	<b>113</b>	<b>169</b>	<b>147</b>	<b>174</b>	<b>170</b>	<b>182</b>	<b>144</b>	<b>117</b>	<b>124</b>	<b>131</b>	<b>182</b>	<b>1,963</b>
	County Totals	CPS	292	212	172	259	212	267	252	273	214	192	179	177	260	2,961
		CWS	70	44	61	59	66	75	60	78	65	50	69	74	75	846
		<b>Total</b>	<b>362</b>	<b>256</b>	<b>233</b>	<b>318</b>	<b>278</b>	<b>342</b>	<b>312</b>	<b>351</b>	<b>279</b>	<b>242</b>	<b>248</b>	<b>251</b>	<b>335</b>	<b>3,807</b>
CAMDEN	Camden Central	CPS	112	99	107	119	115	100	127	110	127	111	97	109	151	1,484
		CWS	29	38	31	28	23	23	37	48	39	34	30	35	26	421
		<b>Total</b>	<b>141</b>	<b>137</b>	<b>138</b>	<b>147</b>	<b>138</b>	<b>123</b>	<b>164</b>	<b>158</b>	<b>166</b>	<b>145</b>	<b>127</b>	<b>144</b>	<b>177</b>	<b>1,905</b>
	Camden East	CPS	109	101	100	96	85	97	112	118	101	94	82	92	116	1,303
		CWS	28	29	36	25	29	45	34	21	38	27	18	46	37	413
		<b>Total</b>	<b>137</b>	<b>130</b>	<b>136</b>	<b>121</b>	<b>114</b>	<b>142</b>	<b>146</b>	<b>139</b>	<b>139</b>	<b>121</b>	<b>100</b>	<b>138</b>	<b>153</b>	<b>1,716</b>
	Camden North	CPS	107	86	93	94	95	94	107	96	104	91	71	95	122	1,255
		CWS	35	26	28	22	30	27	39	41	31	27	15	25	23	369
		<b>Total</b>	<b>142</b>	<b>112</b>	<b>121</b>	<b>116</b>	<b>125</b>	<b>121</b>	<b>146</b>	<b>137</b>	<b>135</b>	<b>118</b>	<b>86</b>	<b>120</b>	<b>145</b>	<b>1,624</b>
	Camden South	CPS	100	84	80	82	63	77	75	101	62	82	64	94	92	1,056
		CWS	33	22	19	17	24	32	16	32	26	24	23	41	27	336
		<b>Total</b>	<b>133</b>	<b>106</b>	<b>99</b>	<b>99</b>	<b>87</b>	<b>109</b>	<b>91</b>	<b>133</b>	<b>88</b>	<b>106</b>	<b>87</b>	<b>135</b>	<b>119</b>	<b>1,392</b>
	County Totals	CPS	428	370	380	391	358	368	421	425	394	378	314	390	481	5,098
		CWS	125	115	114	92	106	127	126	142	134	112	86	147	113	1,539
		<b>Total</b>	<b>553</b>	<b>485</b>	<b>494</b>	<b>483</b>	<b>464</b>	<b>495</b>	<b>547</b>	<b>567</b>	<b>528</b>	<b>490</b>	<b>400</b>	<b>537</b>	<b>594</b>	<b>6,637</b>
CAPE MAY	Cape May	CPS	73	46	61	67	61	57	69	92	45	70	76	74	73	864
		CWS	21	15	21	22	23	17	18	20	19	26	16	21	14	253
		<b>Total</b>	<b>94</b>	<b>61</b>	<b>82</b>	<b>89</b>	<b>84</b>	<b>74</b>	<b>87</b>	<b>112</b>	<b>64</b>	<b>96</b>	<b>92</b>	<b>95</b>	<b>87</b>	<b>1,117</b>
	County Totals	CPS	73	46	61	67	61	57	69	92	45	70	76	74	73	864
		<b>Total</b>	<b>94</b>	<b>61</b>	<b>82</b>	<b>89</b>	<b>84</b>	<b>74</b>	<b>87</b>	<b>112</b>	<b>64</b>	<b>96</b>	<b>92</b>	<b>95</b>	<b>87</b>	<b>1,117</b>
CUMBERLAND	Cumberland East	CPS	61	49	59	45	60	48	51	64	57	67	30	55	69	715
		CWS	22	16	9	16	12	13	21	18	22	5	18	18	17	207
		<b>Total</b>	<b>83</b>	<b>65</b>	<b>68</b>	<b>61</b>	<b>72</b>	<b>61</b>	<b>72</b>	<b>82</b>	<b>79</b>	<b>72</b>	<b>48</b>	<b>73</b>	<b>86</b>	<b>922</b>
	Cumberland West	CPS	146	107	93	107	109	112	120	132	109	121	70	116	102	1,444
		CWS	33	38	22	29	33	35	30	33	22	25	29	25	36	390
		<b>Total</b>	<b>179</b>	<b>145</b>	<b>115</b>	<b>136</b>	<b>142</b>	<b>147</b>	<b>150</b>	<b>165</b>	<b>131</b>	<b>146</b>	<b>99</b>	<b>141</b>	<b>138</b>	<b>1,834</b>
	County Totals	CPS	207	156	152	152	169	160	171	196	166	188	100	171	171	2,159
		CWS	55	54	31	45	45	48	51	51	44	30	47	43	53	597
		<b>Total</b>	<b>262</b>	<b>210</b>	<b>183</b>	<b>197</b>	<b>214</b>	<b>208</b>	<b>222</b>	<b>247</b>	<b>210</b>	<b>218</b>	<b>147</b>	<b>214</b>	<b>224</b>	<b>2,756</b>

**Table 5: Monthly Count of CPS Reports and CWS Referrals Assigned to CP&P Local Offices**

County	Local Office	Type of Referral	Referral Month												Total	
			Oct 2013	Nov 2013	Dec 2013	Jan 2014	Feb 2014	Mar 2014	Apr 2014	May 2014	Jun 2014	Jul 2014	Aug 2014	Sep 2014		Oct 2014
ESSEX	Essex Central	CPS	111	76	93	89	85	101	93	95	98	76	67	84	104	1,172
		CWS	36	40	30	41	27	36	26	36	28	28	20	30	42	420
		<b>Total</b>	<b>147</b>	<b>116</b>	<b>123</b>	<b>130</b>	<b>112</b>	<b>137</b>	<b>119</b>	<b>131</b>	<b>126</b>	<b>104</b>	<b>87</b>	<b>114</b>	<b>146</b>	<b>1,592</b>
	Essex North	CPS	85	68	54	68	50	88	68	78	56	37	43	68	65	828
		CWS	28	20	14	19	14	16	18	29	26	13	14	21	25	257
		<b>Total</b>	<b>113</b>	<b>88</b>	<b>68</b>	<b>87</b>	<b>64</b>	<b>104</b>	<b>86</b>	<b>107</b>	<b>82</b>	<b>50</b>	<b>57</b>	<b>89</b>	<b>90</b>	<b>1,085</b>
	Essex South	CPS	79	68	48	64	63	80	64	63	66	42	55	50	61	803
		CWS	16	41	22	23	14	32	28	25	16	23	25	31	22	318
		<b>Total</b>	<b>95</b>	<b>109</b>	<b>70</b>	<b>87</b>	<b>77</b>	<b>112</b>	<b>92</b>	<b>88</b>	<b>82</b>	<b>65</b>	<b>80</b>	<b>81</b>	<b>83</b>	<b>1,121</b>
	Newark Center City	CPS	84	93	68	81	83	104	79	85	80	73	62	83	90	1,065
		CWS	29	26	22	18	23	28	26	46	28	19	30	33	40	368
		<b>Total</b>	<b>113</b>	<b>119</b>	<b>90</b>	<b>99</b>	<b>106</b>	<b>132</b>	<b>105</b>	<b>131</b>	<b>108</b>	<b>92</b>	<b>92</b>	<b>116</b>	<b>130</b>	<b>1,433</b>
	Newark Northeast	CPS	96	84	81	101	63	90	77	103	74	83	70	78	97	1,097
		CWS	22	28	14	27	23	29	34	39	41	22	25	27	28	359
		<b>Total</b>	<b>118</b>	<b>112</b>	<b>95</b>	<b>128</b>	<b>86</b>	<b>119</b>	<b>111</b>	<b>142</b>	<b>115</b>	<b>105</b>	<b>95</b>	<b>105</b>	<b>125</b>	<b>1,456</b>
	Newark South	CPS	102	68	97	93	88	99	114	112	88	91	69	93	124	1,238
		CWS	19	40	28	26	30	59	36	42	31	29	36	32	27	435
		<b>Total</b>	<b>121</b>	<b>108</b>	<b>125</b>	<b>119</b>	<b>118</b>	<b>158</b>	<b>150</b>	<b>154</b>	<b>119</b>	<b>120</b>	<b>105</b>	<b>125</b>	<b>151</b>	<b>1,673</b>
	Newark Adoption Office	CPS	4	0	0	1	0	0	1	0	0	0	0	0	0	6
		CWS	1	1	3	0	0	0	0	0	0	0	0	0	0	5
		<b>Total</b>	<b>5</b>	<b>1</b>	<b>3</b>	<b>1</b>	<b>0</b>	<b>0</b>	<b>1</b>	<b>0</b>	<b>0</b>	<b>0</b>	<b>0</b>	<b>0</b>	<b>0</b>	<b>11</b>
County Totals	CPS	561	457	441	497	432	562	496	536	462	402	366	456	541	6,209	
	CWS	151	196	133	154	131	200	168	217	170	134	150	174	184	2,162	
	<b>Total</b>	<b>712</b>	<b>653</b>	<b>574</b>	<b>651</b>	<b>563</b>	<b>762</b>	<b>664</b>	<b>753</b>	<b>632</b>	<b>536</b>	<b>516</b>	<b>630</b>	<b>725</b>	<b>8,371</b>	
GLOUCESTER	Gloucester East	CPS	98	90	74	95	95	97	82	114	112	94	73	90	101	1,215
		CWS	27	18	26	31	19	32	27	31	22	21	25	28	37	344
		<b>Total</b>	<b>125</b>	<b>108</b>	<b>100</b>	<b>126</b>	<b>114</b>	<b>129</b>	<b>109</b>	<b>145</b>	<b>134</b>	<b>115</b>	<b>98</b>	<b>118</b>	<b>138</b>	<b>1,559</b>
	Gloucester West	CPS	109	109	92	108	110	112	107	116	125	103	82	119	126	1,418
		CWS	27	31	21	25	34	25	18	36	36	36	26	24	36	375
		<b>Total</b>	<b>136</b>	<b>140</b>	<b>113</b>	<b>133</b>	<b>144</b>	<b>137</b>	<b>125</b>	<b>152</b>	<b>161</b>	<b>139</b>	<b>108</b>	<b>143</b>	<b>162</b>	<b>1,793</b>
	County Totals	CPS	207	199	166	203	205	209	189	230	237	197	155	209	227	2,633
CWS		54	49	47	56	53	57	45	67	58	57	51	52	73	719	
<b>Total</b>		<b>261</b>	<b>248</b>	<b>213</b>	<b>259</b>	<b>258</b>	<b>266</b>	<b>234</b>	<b>297</b>	<b>295</b>	<b>254</b>	<b>206</b>	<b>261</b>	<b>300</b>	<b>3,352</b>	
HUDSON	Hudson Central	CPS	80	76	59	85	75	79	80	96	84	74	58	76	94	1,016
		CWS	29	30	23	18	23	21	22	32	19	28	28	34	33	340
		<b>Total</b>	<b>109</b>	<b>106</b>	<b>82</b>	<b>103</b>	<b>98</b>	<b>100</b>	<b>102</b>	<b>128</b>	<b>103</b>	<b>102</b>	<b>86</b>	<b>110</b>	<b>127</b>	<b>1,356</b>
	Hudson North	CPS	96	89	103	109	85	105	86	93	98	48	34	90	99	1,135
		CWS	38	19	20	33	18	25	19	25	32	19	17	25	33	323
		<b>Total</b>	<b>134</b>	<b>108</b>	<b>123</b>	<b>142</b>	<b>103</b>	<b>130</b>	<b>105</b>	<b>118</b>	<b>130</b>	<b>67</b>	<b>51</b>	<b>115</b>	<b>132</b>	<b>1,458</b>
	Hudson South	CPS	112	76	89	104	80	112	83	93	88	66	43	88	95	1,129
		CWS	24	33	17	28	25	44	33	41	29	19	31	21	36	381
		<b>Total</b>	<b>136</b>	<b>109</b>	<b>106</b>	<b>132</b>	<b>105</b>	<b>156</b>	<b>116</b>	<b>134</b>	<b>117</b>	<b>85</b>	<b>74</b>	<b>109</b>	<b>131</b>	<b>1,510</b>
	Hudson West	CPS	102	97	79	85	67	113	90	102	92	63	43	87	113	1,133
		CWS	25	21	39	31	26	38	24	27	24	21	21	25	29	351
<b>Total</b>		<b>127</b>	<b>118</b>	<b>118</b>	<b>116</b>	<b>93</b>	<b>151</b>	<b>114</b>	<b>129</b>	<b>116</b>	<b>84</b>	<b>64</b>	<b>112</b>	<b>142</b>	<b>1,484</b>	
County Totals	CPS	390	338	330	383	307	409	339	384	362	251	178	341	401	4,413	
	CWS	116	103	99	110	92	128	98	125	104	87	97	105	131	1,395	
	<b>Total</b>	<b>506</b>	<b>441</b>	<b>429</b>	<b>493</b>	<b>399</b>	<b>537</b>	<b>437</b>	<b>509</b>	<b>466</b>	<b>338</b>	<b>275</b>	<b>446</b>	<b>532</b>	<b>5,808</b>	
HUNTERDON	Hunterdon	CPS	51	31	35	47	38	55	39	40	33	44	32	34	38	517
		CWS	13	13	8	18	13	13	11	19	8	13	7	16	9	161
		<b>Total</b>	<b>64</b>	<b>44</b>	<b>43</b>	<b>65</b>	<b>51</b>	<b>68</b>	<b>50</b>	<b>59</b>	<b>41</b>	<b>57</b>	<b>39</b>	<b>50</b>	<b>47</b>	<b>678</b>
	County Totals	CPS	51	31	35	47	38	55	39	40	33	44	32	34	38	517
		CWS	13	13	8	18	13	13	11	19	8	13	7	16	9	161
<b>Total</b>	<b>64</b>	<b>44</b>	<b>43</b>	<b>65</b>	<b>51</b>	<b>68</b>	<b>50</b>	<b>59</b>	<b>41</b>	<b>57</b>	<b>39</b>	<b>50</b>	<b>47</b>	<b>678</b>		
MERCER	Mercer North	CPS	106	84	80	97	101	109	93	105	102	87	79	89	123	1,255
		CWS	18	33	28	27	25	23	28	43	38	25	27	35	28	378
		<b>Total</b>	<b>124</b>	<b>117</b>	<b>108</b>	<b>124</b>	<b>126</b>	<b>132</b>	<b>121</b>	<b>148</b>	<b>140</b>	<b>112</b>	<b>106</b>	<b>124</b>	<b>151</b>	<b>1,633</b>
	Mercer South	CPS	110	91	90	107	83	127	123	128	109	106	74	112	117	1,377
		CWS	19	29	17	20	19	37	35	23	30	28	23	25	26	331
		<b>Total</b>	<b>129</b>	<b>120</b>	<b>107</b>	<b>127</b>	<b>102</b>	<b>164</b>	<b>158</b>	<b>151</b>	<b>139</b>	<b>134</b>	<b>97</b>	<b>137</b>	<b>143</b>	<b>1,708</b>
	County Totals	CPS	216	175	170	204	184	236	216	233	211	193	153	201	240	2,632
CWS		37	62	45	47	44	60	63	66	68	53	50	60	54	709	
<b>Total</b>		<b>253</b>	<b>237</b>	<b>215</b>	<b>251</b>	<b>228</b>	<b>296</b>	<b>279</b>	<b>299</b>	<b>279</b>	<b>246</b>	<b>203</b>	<b>261</b>	<b>294</b>	<b>3,341</b>	

**Table 5: Monthly Count of CPS Reports and CWS Referrals Assigned to CP&P Local Offices**

County	Local Office	Type of Referral	Referral Month												Total	
			Oct 2013	Nov 2013	Dec 2013	Jan 2014	Feb 2014	Mar 2014	Apr 2014	May 2014	Jun 2014	Jul 2014	Aug 2014	Sep 2014		Oct 2014
MIDDLESEX	Middlesex Central	CPS	100	74	73	82	71	87	78	87	79	65	51	81	90	1,018
		CWS	28	22	13	22	19	21	22	20	19	19	22	22	24	273
		<b>Total</b>	<b>128</b>	<b>96</b>	<b>86</b>	<b>104</b>	<b>90</b>	<b>108</b>	<b>100</b>	<b>107</b>	<b>98</b>	<b>84</b>	<b>73</b>	<b>103</b>	<b>114</b>	<b>1,291</b>
	Middlesex Coastal	CPS	145	112	96	131	97	171	135	149	122	118	92	103	137	1,608
		CWS	42	22	35	32	21	37	34	28	34	20	17	47	38	407
		<b>Total</b>	<b>187</b>	<b>134</b>	<b>131</b>	<b>163</b>	<b>118</b>	<b>208</b>	<b>169</b>	<b>177</b>	<b>156</b>	<b>138</b>	<b>109</b>	<b>150</b>	<b>175</b>	<b>2,015</b>
	Middlesex West	CPS	150	127	107	153	124	143	136	162	109	87	81	119	134	1,632
		CWS	38	38	42	34	34	40	33	29	37	27	21	41	35	449
		<b>Total</b>	<b>188</b>	<b>165</b>	<b>149</b>	<b>187</b>	<b>158</b>	<b>183</b>	<b>169</b>	<b>191</b>	<b>146</b>	<b>114</b>	<b>102</b>	<b>160</b>	<b>169</b>	<b>2,081</b>
	County Totals	CPS	395	313	276	366	292	401	349	398	310	270	224	303	361	4,258
CWS		108	82	90	88	74	98	89	77	90	66	60	110	97	1,129	
<b>Total</b>		<b>503</b>	<b>395</b>	<b>366</b>	<b>454</b>	<b>366</b>	<b>499</b>	<b>438</b>	<b>475</b>	<b>400</b>	<b>336</b>	<b>284</b>	<b>413</b>	<b>458</b>	<b>5,387</b>	
MONMOUTH	Monmouth North	CPS	179	167	151	147	147	183	166	183	139	125	142	156	169	2,054
		CWS	32	41	50	36	40	51	57	35	52	39	41	45	49	568
		<b>Total</b>	<b>211</b>	<b>208</b>	<b>201</b>	<b>183</b>	<b>187</b>	<b>234</b>	<b>223</b>	<b>218</b>	<b>191</b>	<b>164</b>	<b>183</b>	<b>201</b>	<b>218</b>	<b>2,622</b>
	Monmouth South	CPS	138	112	104	144	136	150	117	131	153	111	119	134	153	1,702
		CWS	37	34	32	46	34	45	39	51	44	18	32	40	42	494
		<b>Total</b>	<b>175</b>	<b>146</b>	<b>136</b>	<b>190</b>	<b>170</b>	<b>195</b>	<b>156</b>	<b>182</b>	<b>197</b>	<b>129</b>	<b>151</b>	<b>174</b>	<b>195</b>	<b>2,196</b>
	County Totals	CPS	317	279	255	291	283	333	283	314	292	236	261	290	322	3,756
		CWS	69	75	82	82	74	96	96	86	96	57	73	85	91	1,062
		<b>Total</b>	<b>386</b>	<b>354</b>	<b>337</b>	<b>373</b>	<b>357</b>	<b>429</b>	<b>379</b>	<b>400</b>	<b>388</b>	<b>293</b>	<b>334</b>	<b>375</b>	<b>413</b>	<b>4,818</b>
	MORRIS	Morris West	CPS	103	101	94	110	108	97	102	97	87	80	87	85	108
CWS			31	23	29	26	26	26	33	32	32	26	30	32	25	371
<b>Total</b>			<b>134</b>	<b>124</b>	<b>123</b>	<b>136</b>	<b>134</b>	<b>123</b>	<b>135</b>	<b>129</b>	<b>119</b>	<b>106</b>	<b>117</b>	<b>117</b>	<b>133</b>	<b>1,630</b>
Morris East		CPS	81	62	64	76	49	77	85	82	66	70	53	87	80	932
		CWS	16	20	19	30	26	24	17	39	29	22	25	19	24	310
		<b>Total</b>	<b>97</b>	<b>82</b>	<b>83</b>	<b>106</b>	<b>75</b>	<b>101</b>	<b>102</b>	<b>121</b>	<b>95</b>	<b>92</b>	<b>78</b>	<b>106</b>	<b>104</b>	<b>1,242</b>
County Totals		CPS	184	163	158	186	157	174	187	179	153	150	140	172	188	2,191
		CWS	47	43	48	56	52	50	50	71	61	48	55	51	49	681
		<b>Total</b>	<b>231</b>	<b>206</b>	<b>206</b>	<b>242</b>	<b>209</b>	<b>224</b>	<b>237</b>	<b>250</b>	<b>214</b>	<b>198</b>	<b>195</b>	<b>223</b>	<b>237</b>	<b>2,872</b>
OCEAN		Ocean North	CPS	179	149	127	146	134	128	149	161	148	132	110	139	132
	CWS		56	34	29	45	31	44	30	38	36	33	35	36	46	493
	<b>Total</b>		<b>235</b>	<b>183</b>	<b>156</b>	<b>191</b>	<b>165</b>	<b>172</b>	<b>179</b>	<b>199</b>	<b>184</b>	<b>165</b>	<b>145</b>	<b>175</b>	<b>178</b>	<b>2,327</b>
	Ocean South	CPS	176	159	150	198	145	207	155	156	188	156	141	160	226	2,217
		CWS	37	43	34	43	40	50	35	56	44	51	30	49	52	564
		<b>Total</b>	<b>213</b>	<b>202</b>	<b>184</b>	<b>241</b>	<b>185</b>	<b>257</b>	<b>190</b>	<b>212</b>	<b>232</b>	<b>207</b>	<b>171</b>	<b>209</b>	<b>278</b>	<b>2,781</b>
	County Totals	CPS	355	308	277	344	279	335	304	317	336	288	251	299	358	4,051
		CWS	93	77	63	88	71	94	65	94	80	84	65	85	98	1,057
		<b>Total</b>	<b>448</b>	<b>385</b>	<b>340</b>	<b>432</b>	<b>350</b>	<b>429</b>	<b>369</b>	<b>411</b>	<b>416</b>	<b>372</b>	<b>316</b>	<b>384</b>	<b>456</b>	<b>5,108</b>
	PASSAIC	Passaic Central	CPS	194	161	139	165	152	200	184	203	159	128	112	140	182
CWS			57	37	47	41	44	71	50	55	60	49	34	53	53	651
<b>Total</b>			<b>251</b>	<b>198</b>	<b>186</b>	<b>206</b>	<b>196</b>	<b>271</b>	<b>234</b>	<b>258</b>	<b>219</b>	<b>177</b>	<b>146</b>	<b>193</b>	<b>235</b>	<b>2,770</b>
Passaic North		CPS	160	137	162	136	104	159	176	176	131	122	113	153	141	1,870
		CWS	56	46	40	52	28	41	62	44	52	41	40	38	51	591
		<b>Total</b>	<b>216</b>	<b>183</b>	<b>202</b>	<b>188</b>	<b>132</b>	<b>200</b>	<b>238</b>	<b>220</b>	<b>183</b>	<b>163</b>	<b>153</b>	<b>191</b>	<b>192</b>	<b>2,461</b>
County Totals		CPS	354	298	301	301	256	359	360	379	290	250	225	293	323	3,989
		CWS	113	83	87	93	72	112	112	99	112	90	74	91	104	1,242
		<b>Total</b>	<b>467</b>	<b>381</b>	<b>388</b>	<b>394</b>	<b>328</b>	<b>471</b>	<b>472</b>	<b>478</b>	<b>402</b>	<b>340</b>	<b>299</b>	<b>384</b>	<b>427</b>	<b>5,231</b>
SALEM		Salem	CPS	80	52	58	66	59	56	67	66	54	57	69	82	80
	CWS		17	22	14	19	17	21	12	19	21	19	13	19	16	229
	<b>Total</b>		<b>97</b>	<b>74</b>	<b>72</b>	<b>85</b>	<b>76</b>	<b>77</b>	<b>79</b>	<b>85</b>	<b>75</b>	<b>76</b>	<b>82</b>	<b>101</b>	<b>96</b>	<b>1,075</b>
	County Totals	CPS	80	52	58	66	59	56	67	66	54	57	69	82	80	846
		CWS	17	22	14	19	17	21	12	19	21	19	13	19	16	229
		<b>Total</b>	<b>97</b>	<b>74</b>	<b>72</b>	<b>85</b>	<b>76</b>	<b>77</b>	<b>79</b>	<b>85</b>	<b>75</b>	<b>76</b>	<b>82</b>	<b>101</b>	<b>96</b>	<b>1,075</b>
SOMERSET	Somerset	CPS	140	122	103	142	125	161	133	120	137	102	93	110	116	1,604
		CWS	50	26	29	32	34	35	38	39	43	23	26	29	36	440
		<b>Total</b>	<b>190</b>	<b>148</b>	<b>132</b>	<b>174</b>	<b>159</b>	<b>196</b>	<b>171</b>	<b>159</b>	<b>180</b>	<b>125</b>	<b>119</b>	<b>139</b>	<b>152</b>	<b>2,044</b>
	County Totals	CPS	140	122	103	142	125	161	133	120	137	102	93	110	116	1,604
		CWS	50	26	29	32	34	35	38	39	43	23	26	29	36	440
		<b>Total</b>	<b>190</b>	<b>148</b>	<b>132</b>	<b>174</b>	<b>159</b>	<b>196</b>	<b>171</b>	<b>159</b>	<b>180</b>	<b>125</b>	<b>119</b>	<b>139</b>	<b>152</b>	<b>2,044</b>

**Table 5: Monthly Count of CPS Reports and CWS Referrals Assigned to CP&P Local Offices**

County	Local Office	Type of Referral	Referral Month												Total	
			Oct 2013	Nov 2013	Dec 2013	Jan 2014	Feb 2014	Mar 2014	Apr 2014	May 2014	Jun 2014	Jul 2014	Aug 2014	Sep 2014		Oct 2014
SUSSEX	Sussex	CPS	80	82	58	86	71	69	87	88	71	73	55	59	60	939
		CWS	22	28	15	29	15	19	19	28	21	23	20	28	24	291
		<b>Total</b>	<b>102</b>	<b>110</b>	<b>73</b>	<b>115</b>	<b>86</b>	<b>88</b>	<b>106</b>	<b>116</b>	<b>92</b>	<b>96</b>	<b>75</b>	<b>87</b>	<b>84</b>	<b>1,230</b>
	County Totals	CPS	80	82	58	86	71	69	87	88	71	73	55	59	60	939
		CWS	22	28	15	29	15	19	19	28	21	23	20	28	24	291
		<b>Total</b>	<b>102</b>	<b>110</b>	<b>73</b>	<b>115</b>	<b>86</b>	<b>88</b>	<b>106</b>	<b>116</b>	<b>92</b>	<b>96</b>	<b>75</b>	<b>87</b>	<b>84</b>	<b>1,230</b>
UNION	Union Central	CPS	91	76	75	69	73	79	93	69	73	59	36	63	94	950
		CWS	27	20	20	18	27	34	19	20	21	24	20	21	37	308
		<b>Total</b>	<b>118</b>	<b>96</b>	<b>95</b>	<b>87</b>	<b>100</b>	<b>113</b>	<b>112</b>	<b>89</b>	<b>94</b>	<b>83</b>	<b>56</b>	<b>84</b>	<b>131</b>	<b>1,258</b>
	Union East	CPS	100	87	96	109	77	103	110	79	92	63	49	69	94	1,128
		CWS	28	29	24	30	20	29	34	25	38	26	26	28	26	363
		<b>Total</b>	<b>128</b>	<b>116</b>	<b>120</b>	<b>139</b>	<b>97</b>	<b>132</b>	<b>144</b>	<b>104</b>	<b>130</b>	<b>89</b>	<b>75</b>	<b>97</b>	<b>120</b>	<b>1,491</b>
	Union West	CPS	88	67	70	80	77	59	67	88	59	47	58	83	78	921
		CWS	26	16	17	23	29	33	24	25	20	26	15	22	25	301
		<b>Total</b>	<b>114</b>	<b>83</b>	<b>87</b>	<b>103</b>	<b>106</b>	<b>92</b>	<b>91</b>	<b>113</b>	<b>79</b>	<b>73</b>	<b>73</b>	<b>105</b>	<b>103</b>	<b>1,222</b>
	County Totals	CPS	279	230	241	258	227	241	270	236	224	169	143	215	266	2,999
		CWS	81	65	61	71	76	96	77	70	79	76	61	71	88	972
		<b>Total</b>	<b>360</b>	<b>295</b>	<b>302</b>	<b>329</b>	<b>303</b>	<b>337</b>	<b>347</b>	<b>306</b>	<b>303</b>	<b>245</b>	<b>204</b>	<b>286</b>	<b>354</b>	<b>3,971</b>
WARREN	Warren	CPS	78	70	77	70	82	81	76	76	72	66	54	72	96	970
		CWS	27	15	19	25	24	30	27	23	27	11	19	21	17	285
		<b>Total</b>	<b>105</b>	<b>85</b>	<b>96</b>	<b>95</b>	<b>106</b>	<b>111</b>	<b>103</b>	<b>99</b>	<b>99</b>	<b>77</b>	<b>73</b>	<b>93</b>	<b>113</b>	<b>1,255</b>
	County Totals	CPS	78	70	77	70	82	81	76	76	72	66	54	72	96	970
		CWS	27	15	19	25	24	30	27	23	27	11	19	21	17	285
		<b>Total</b>	<b>105</b>	<b>85</b>	<b>96</b>	<b>95</b>	<b>106</b>	<b>111</b>	<b>103</b>	<b>99</b>	<b>99</b>	<b>77</b>	<b>73</b>	<b>93</b>	<b>113</b>	<b>1,255</b>
<b>County CPS Referral Total</b>		<b>CPS</b>	<b>5,196</b>	<b>4,347</b>	<b>4,120</b>	<b>4,787</b>	<b>4,208</b>	<b>5,015</b>	<b>4,751</b>	<b>5,097</b>	<b>4,472</b>	<b>3,922</b>	<b>3,406</b>	<b>4,387</b>	<b>5,122</b>	<b>58,830</b>
<b>County CWS Referral Total</b>		<b>CWS</b>	<b>1,425</b>	<b>1,288</b>	<b>1,190</b>	<b>1,327</b>	<b>1,211</b>	<b>1,503</b>	<b>1,358</b>	<b>1,542</b>	<b>1,420</b>	<b>1,170</b>	<b>1,157</b>	<b>1,413</b>	<b>1,490</b>	<b>17,494</b>
<b>County Referral Total</b>		<b>Total</b>	<b>6,621</b>	<b>5,635</b>	<b>5,310</b>	<b>6,114</b>	<b>5,419</b>	<b>6,518</b>	<b>6,109</b>	<b>6,639</b>	<b>5,892</b>	<b>5,092</b>	<b>4,563</b>	<b>5,800</b>	<b>6,612</b>	<b>76,324</b>
Central Region IAIU		CPS	80	61	35	63	54	60	60	75	60	54	40	55	70	767
		CWS	0	0	0	0	0	0	0	0	0	0	0	0	0	0
		<b>Total</b>	<b>80</b>	<b>61</b>	<b>35</b>	<b>63</b>	<b>54</b>	<b>60</b>	<b>60</b>	<b>75</b>	<b>60</b>	<b>54</b>	<b>40</b>	<b>55</b>	<b>70</b>	<b>767</b>
Metro Region IAIU		CPS	59	49	47	42	44	91	63	57	69	43	25	47	70	706
		CWS	0	0	0	0	0	0	0	0	0	0	1	0	1	2
		<b>Total</b>	<b>59</b>	<b>49</b>	<b>47</b>	<b>42</b>	<b>44</b>	<b>91</b>	<b>63</b>	<b>57</b>	<b>69</b>	<b>43</b>	<b>26</b>	<b>47</b>	<b>71</b>	<b>708</b>
Northern Region IAIU		CPS	83	65	63	77	66	88	60	85	59	50	41	58	80	875
		CWS	0	2	0	0	0	0	0	0	0	0	0	0	0	2
		<b>Total</b>	<b>83</b>	<b>67</b>	<b>63</b>	<b>77</b>	<b>66</b>	<b>88</b>	<b>60</b>	<b>85</b>	<b>59</b>	<b>50</b>	<b>41</b>	<b>58</b>	<b>80</b>	<b>877</b>
Southern Region IAIU		CPS	108	70	54	69	50	78	79	106	74	61	52	64	85	950
		CWS	0	0	0	0	0	0	0	0	0	0	0	0	0	0
		<b>Total</b>	<b>108</b>	<b>70</b>	<b>54</b>	<b>69</b>	<b>50</b>	<b>78</b>	<b>79</b>	<b>106</b>	<b>74</b>	<b>61</b>	<b>52</b>	<b>64</b>	<b>85</b>	<b>950</b>
<b>IAIU CPS Subtotal</b>		<b>CPS</b>	<b>330</b>	<b>245</b>	<b>199</b>	<b>251</b>	<b>214</b>	<b>317</b>	<b>262</b>	<b>323</b>	<b>262</b>	<b>208</b>	<b>158</b>	<b>224</b>	<b>305</b>	<b>3,298</b>
<b>IAIU CWS Subtotal</b>		<b>CWS</b>	<b>0</b>	<b>2</b>	<b>0</b>	<b>0</b>	<b>0</b>	<b>0</b>	<b>0</b>	<b>0</b>	<b>0</b>	<b>1</b>	<b>1</b>	<b>0</b>	<b>4</b>	
<b>IAIU Subtotal</b>		<b>Total</b>	<b>330</b>	<b>247</b>	<b>199</b>	<b>251</b>	<b>214</b>	<b>317</b>	<b>262</b>	<b>323</b>	<b>262</b>	<b>208</b>	<b>159</b>	<b>225</b>	<b>305</b>	<b>3,302</b>
<b>County and IAIU CPS Subtotal</b>		<b>CPS</b>	<b>5,526</b>	<b>4,592</b>	<b>4,319</b>	<b>5,038</b>	<b>4,422</b>	<b>5,332</b>	<b>5,013</b>	<b>5,420</b>	<b>4,734</b>	<b>4,130</b>	<b>3,564</b>	<b>4,611</b>	<b>5,427</b>	<b>62,128</b>
<b>County and IAIU CWS Subtotal</b>		<b>CWS</b>	<b>1,425</b>	<b>1,290</b>	<b>1,190</b>	<b>1,327</b>	<b>1,211</b>	<b>1,503</b>	<b>1,358</b>	<b>1,542</b>	<b>1,420</b>	<b>1,170</b>	<b>1,158</b>	<b>1,414</b>	<b>1,490</b>	<b>17,498</b>
<b>Unable to Determine<sup>(1)</sup></b>		<b>Total</b>	<b>142</b>	<b>144</b>	<b>115</b>	<b>146</b>	<b>119</b>	<b>155</b>	<b>143</b>	<b>171</b>	<b>156</b>	<b>149</b>	<b>129</b>	<b>141</b>	<b>174</b>	<b>1,884</b>
<b>Other Offices</b>		<b>Total</b>	<b>2</b>	<b>2</b>	<b>2</b>	<b>2</b>	<b>0</b>	<b>4</b>	<b>2</b>	<b>3</b>	<b>3</b>	<b>0</b>	<b>0</b>	<b>0</b>	<b>4</b>	<b>24</b>
<b>Grand Total</b>		<b>Total</b>	<b>7,095</b>	<b>6,028</b>	<b>5,626</b>	<b>6,513</b>	<b>5,752</b>	<b>6,994</b>	<b>6,516</b>	<b>7,136</b>	<b>6,313</b>	<b>5,449</b>	<b>4,851</b>	<b>6,166</b>	<b>7,095</b>	<b>81,534</b>

<sup>(1)</sup>CPS Reports or CWS Referrals not assigned to an office through the Assignment Designee, but were assigned to an office for an assessment or investigation.