



## **Child Protection and Permanency**

# **Monthly Screening and Investigation Report November 2014**

Allison Blake, Ph.D., L.S.W.  
Commissioner

December 19, 2014



NEW JERSEY DEPARTMENT OF  
CHILDREN AND FAMILIES

## Table of Contents

Table 1: NJ State Central Registry Activity: Monthly Child Abuse and Neglect Hotline Calls, Intakes and Assignments to Child Protection & Permanency (CP&P) Offices

---

Chart 1: CP&P Annual Trends in Child Protection Services (CPS) Reports and Child Welfare Services (CWS) Referrals

---

Table 2: Assignments to CP&P Offices: CPS Reports and CWS Referrals

---

Table 3: Source of CPS Reports and CWS Referrals

---

Table 4: Monthly Count of CPS Reports and CWS Referrals Assigned to Counties

---

Table 5: Monthly Count of CPS Reports and CWS Referrals Assigned to CP&P Local Offices

---

**Table 1: NJ State Central Registry Activity: Monthly Child Abuse and Neglect Hotline Calls, Intakes and Assignments to CP&P Offices<sup>1,2,6</sup>**

2013 - 2014	Hotline Call Activity		Intakes Recorded in NJ SPIRIT <sup>5,7</sup>												Assignments to CP&P Offices				
	Total Calls <sup>3</sup>	Resulting Intakes <sup>4</sup>	CPS Reports		CWS Referrals		No Action Required (NAR)		Related Information (RI)		Information & Referral (I&R)		Information Only (IO)		CPS Reports		CWS Referrals		Total Assignments
			n	%	n	%	n	%	n	%	n	%	n	%	n	%	n	%	
November 2013	13,950	15,260	4,687	30.7%	1,343	8.8%	261	1.7%	4,277	28.0%	1,586	10.4%	3,106	20.4%	4,686	77.7%	1,342	22.3%	6,028
December 2013	12,568	13,962	4,365	31.3%	1,260	9.0%	391	2.8%	3,445	24.7%	1,554	11.1%	2,947	21.1%	4,365	77.6%	1,261	22.4%	5,626
January 2014	15,091	16,412	5,097	31.1%	1,416	8.6%	346	2.1%	4,233	25.8%	1,728	10.5%	3,592	21.9%	5,097	78.3%	1,416	21.7%	6,513
February 2014	13,092	14,377	4,458	31.0%	1,293	9.0%	306	2.1%	3,838	26.7%	1,395	9.7%	3,087	21.5%	4,457	77.5%	1,295	22.5%	5,752
March 2014	15,236	16,707	5,408	32.4%	1,585	9.5%	363	2.2%	4,257	25.5%	1,774	10.6%	3,320	19.9%	5,408	77.3%	1,586	22.7%	6,994
April 2014	14,056	15,642	5,052	32.3%	1,467	9.4%	400	2.6%	3,846	24.6%	1,676	10.7%	3,201	20.5%	5,049	77.5%	1,467	22.5%	6,516
May 2014	15,690	17,101	5,501	32.2%	1,635	9.6%	396	2.3%	4,444	26.0%	1,816	10.6%	3,309	19.3%	5,501	77.1%	1,635	22.9%	7,136
June 2014	13,809	15,171	4,796	31.6%	1,516	10.0%	402	2.6%	4,028	26.6%	1,625	10.7%	2,804	18.5%	4,796	76.0%	1,517	24.0%	6,313
July 2014	12,308	13,784	4,202	30.5%	1,247	9.0%	384	2.8%	3,758	27.3%	1,487	10.8%	2,706	19.6%	4,202	77.1%	1,247	22.9%	5,449
August 2014	11,306	12,610	3,629	28.8%	1,222	9.7%	331	2.6%	3,314	26.3%	1,321	10.5%	2,793	22.1%	3,629	74.8%	1,222	25.2%	4,851
September 2014	13,664	15,190	4,668	30.7%	1,496	9.8%	393	2.6%	3,949	26.0%	1,792	11.8%	2,892	19.0%	4,668	75.7%	1,498	24.3%	6,166
October 2014	15,268	16,868	5,510	32.7%	1,584	9.4%	555	3.3%	4,259	25.2%	1,946	11.5%	3,014	17.9%	5,509	77.6%	1,586	22.4%	7,095
<b>November 2014</b>	<b>12,649</b>	<b>13,938</b>	<b>4,254</b>	<b>30.5%</b>	<b>1,416</b>	<b>10.2%</b>	<b>297</b>	<b>2.1%</b>	<b>3,895</b>	<b>27.9%</b>	<b>1,473</b>	<b>10.6%</b>	<b>2,603</b>	<b>18.7%</b>	<b>4,254</b>	<b>75.0%</b>	<b>1,416</b>	<b>25.0%</b>	<b>5,670</b>
<b>Monthly Average</b>	<b>13,745</b>	<b>15,156</b>	<b>4,741</b>	<b>31.3%</b>	<b>1,422</b>	<b>9.4%</b>	<b>371</b>	<b>2.4%</b>	<b>3,965</b>	<b>26.2%</b>	<b>1,629</b>	<b>10.7%</b>	<b>3,029</b>	<b>20.0%</b>	<b>4,740</b>	<b>76.9%</b>	<b>1,422</b>	<b>23.1%</b>	<b>6,162</b>
<b>Overall Total</b>	<b>178,687</b>		<b>61,627</b>		<b>18,480</b>		<b>4,825</b>		<b>51,543</b>		<b>21,173</b>		<b>39,374</b>		<b>61,621</b>	<b>76.9%</b>	<b>18,488</b>	<b>23.1%</b>	<b>80,109</b>

<sup>1</sup>Comes from three distinct sources: (1) the Automatic Call Distribution (ACD) phone system; which keeps a count of the number of calls and call routing; (2) Monthly NJSpirit Intakes; which record decision making on calls received by hotline screeners, and (3) NJSpirit extracts of assigned CWS Referrals and CPS Reports.

<sup>2</sup>The number of Intakes, CPS Reports, and CWS Referrals are based on an extract from NJSpirit. Data extracted by the Office of Research, Evaluation, and Reporting on **December 15, 2014** includes all Intakes, CPS Reports, and CWS Referrals received from November 1, 2014 through November 30, 2014.

<sup>3</sup>The number calls received through the ACD System that were directed to a screener from any call-in phone number.

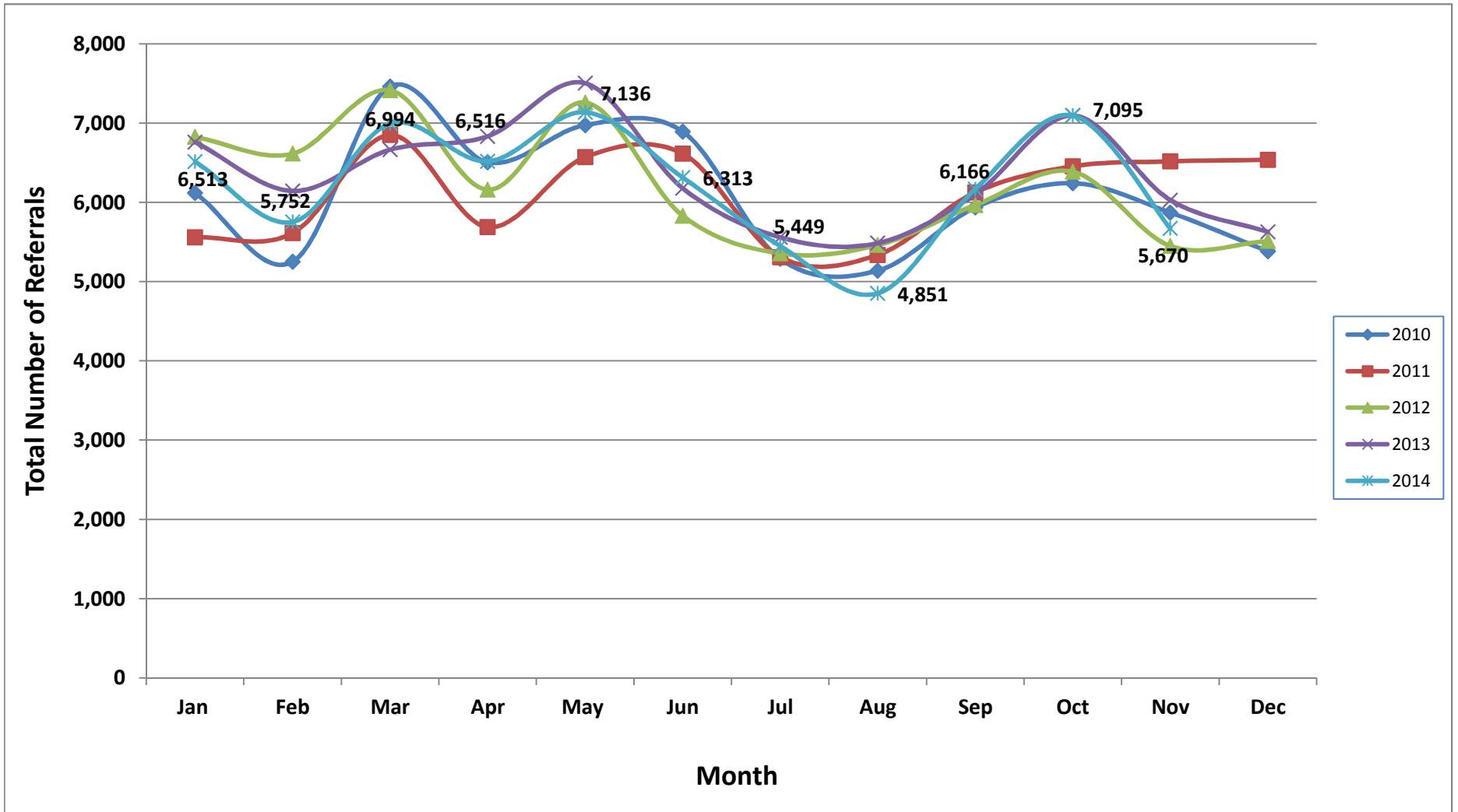
<sup>4</sup>The number of Intakes entered in NJSpirit from the number of calls received.

<sup>5</sup>The number of Intakes recorded in NJSpirit, by type of Intake. There is not a one-to-one relationship between an ACD call and an Intake; multiple calls to State Central Registry (SCR) may result in a single Intake, or one call may result in multiple Intakes.

<sup>6</sup>Intake: The process of documenting: a report of alleged abuse or neglect of a child (CPS); a request for services on behalf of a child, or a referral of a child for services (CWS); a call in which the caller provides additional or clarifying information about a current service case or active investigation (RI); informing a caller of, or referring a caller to, services available from other private or public sources (I&R); a call that requires no action by CP&P (NAR); or a response to a simple inquiry (IO).

<sup>7</sup>NJ SPIRIT: NJ Statewide Protection Investigation and Reporting Information Tool case management system

### CP&P Annual Trends in CPS Reports and CWS Referrals



**Table 2: Assignments to CP&P Offices: CPS Reports and CWS Referrals<sup>1</sup>**

Intake Date		CPS Reports <sup>2,3</sup>	CWS Referrals <sup>2,3</sup>	Total Assignments <sup>2,3</sup>
2010	Jan 2010	5,154	963	6,117
	Feb 2010	4,446	804	5,250
	Mar 2010	6,314	1,147	7,461
	Apr 2010	5,465	1,040	6,505
	May 2010	5,797	1,177	6,974
	Jun 2010	5,734	1,157	6,891
	Jul 2010	4,270	1,017	5,287
	Aug 2010	4,110	1,028	5,138
	Sep 2010	4,922	1,012	5,934
	Oct 2010	5,105	1,136	6,241
	Nov 2010	4,842	1,028	5,870
	Dec 2010	4,472	909	5,381
	<b>Total</b>	<b>60,631</b>	<b>12,418</b>	<b>73,049</b>
2011	Jan 2011	4,616	942	5,558
	Feb 2011	4,672	939	5,611
	Mar 2011	5,701	1,148	6,849
	Apr 2011	4,682	1,005	5,687
	May 2011	5,362	1,207	6,569
	Jun 2011	5,299	1,315	6,614
	Jul 2011	4,200	1,108	5,308
	Aug 2011	4,170	1,166	5,336
	Sep 2011	4,872	1,253	6,125
	Oct 2011	5,322	1,132	6,454
	Nov 2011	5,220	1,296	6,516
	Dec 2011	5,363	1,173	6,536
	<b>Total</b>	<b>59,479</b>	<b>13,684</b>	<b>73,163</b>
2012	Jan 2012	5,530	1,294	6,824
	Feb 2012	5,358	1,255	6,613
	Mar 2012	5,985	1,428	7,413
	Apr 2012	4,899	1,259	6,158
	May 2012	5,874	1,385	7,259
	June 2012	4,640	1,190	5,830
	July 2012	4,254	1,101	5,355
	Aug 2012	4,325	1,135	5,460
	Sep 2012	4,769	1,196	5,965
	Oct 2012	5,178	1,207	6,385
	Nov 2012	4,310	1,138	5,448
	Dec 2012	4,394	1,116	5,510
	<b>Total</b>	<b>59,516</b>	<b>14,704</b>	<b>74,220</b>

**Table 2: Assignments to CP&P Offices: CPS Reports and CWS Referrals<sup>1</sup>**

Intake Date		CPS Reports <sup>2,3</sup>	CWS Referrals <sup>2,3</sup>	Total Assignments <sup>2,3</sup>
2013	Jan 2013	5,464	1,296	6,760
	Feb 2013	4,966	1,177	6,143
	Mar 2013	5,355	1,309	6,664
	Apr 2013	5,430	1,402	6,832
	May 2013	5,993	1,510	7,503
	June 2013	4,947	1,230	6,177
	July 2013	4,330	1,228	5,558
	Aug 2013	4,330	1,155	5,485
	Sep 2013	4,851	1,251	6,102
	Oct 2013	5,614	1,481	7,095
	Nov 2013	4,694	1,334	6,028
	Dec 2013	4,397	1,229	5,626
	<b>Total</b>	<b>60,371</b>	<b>15,602</b>	<b>75,973</b>
2014	Jan 2014	5,138	1,375	6,513
	Feb 2014	4,499	1,253	5,752
	Mar 2014	5,438	1,556	6,994
	Apr 2014	5,105	1,411	6,516
	May 2014	5,541	1,595	7,136
	June 2014	4,842	1,471	6,313
	July 2014	4,228	1,221	5,449
	Aug 2014	3,652	1,199	4,851
	Sep 2014	4,705	1,461	6,166
	<b>Oct 2014</b>	<b>5,552</b>	<b>1,543</b>	<b>7,095</b>
	<b>Nov 2014</b>	<b>4,294</b>	<b>1,376</b>	<b>5,670</b>
	<b>Total</b>	<b>52,994</b>	<b>15,461</b>	<b>68,455</b>
<b>Grand Total</b>		<b>292,991</b>	<b>71,869</b>	<b>364,860</b>

<sup>1</sup>Source of Data: NJ SPIRIT

<sup>2</sup>A CPS Report or a CWS Referral may include multiple children in a family, with one or more allegation or request for services. In these cases, each CPS Report or CWS Referral is counted once - the CPS Report or the CWS Referral is the unit of analysis rather than the child.

<sup>3</sup>Includes CPS Reports and CWS Referrals with an assignment to an office via the Assignment Designee process.

**Table 3: Source of CPS Reports and CWS Referrals**

	Source	Nov	Dec	Jan	Feb	Mar	Apr	May	Jun	Jul	Aug	Sep	Oct	Nov 2014		13 Month Total	
		2013	2013	2014	2014	2014	2014	2014	2014	2014	2014	2014	2014	2014			
CPS Reports and CWS Referrals	School Staff	1,455	1,222	1,672	1,488	2,000	1,523	1,861	1,216	200	90	1,200	1,935	1395	20%	17,257	22%
	Healthcare Provider	751	696	850	699	855	878	818	806	860	704	774	824	735	10%	10,250	13%
	Law Enforcement	855	756	845	760	900	853	994	955	961	934	922	898	835	12%	11,468	14%
	Government Agency	445	417	437	402	451	475	504	472	480	429	470	474	350	5%	5,806	7%
	Parent	523	561	561	477	526	525	666	554	593	549	591	603	517	7%	7,246	9%
	Relative/Friend/Neighbor	424	446	494	415	460	533	577	596	688	586	553	568	418	6%	6,758	8%
	Anonymous	742	683	776	661	803	740	741	723	609	640	661	772	614	9%	9,165	11%
	CP&P	91	93	109	100	126	111	128	148	139	111	119	113	94	1%	1,482	2%
	Court/Legal	84	108	102	110	145	142	116	120	138	122	111	129	78	1%	1,505	2%
	Community Group/Individual	218	188	249	224	248	275	269	241	274	241	271	270	209	3%	3,177	4%
	Facility Staff (incl Correctional Facility)	81	72	79	91	96	74	69	96	94	88	72	92	82	1%	1,086	1%
	Child (Self)	49	45	46	38	41	55	44	56	52	38	63	47	42	1%	616	1%
	Other	294	321	283	279	327	317	334	318	350	312	342	354	293	4%	4,124	5%
	Daycare/Babysitter	16	18	10	8	16	15	15	12	11	7	17	16	8	0%	169	0%
<b>Total</b>		<b>6,028</b>	<b>5,626</b>	<b>6,513</b>	<b>5,752</b>	<b>6,994</b>	<b>6,516</b>	<b>7,136</b>	<b>6,313</b>	<b>5,449</b>	<b>4,851</b>	<b>6,166</b>	<b>7,095</b>	<b>5,670</b>		<b>80,109</b>	

**Table 4: Monthly Count of CPS Reports and CWS Referrals Assigned to Counties**

County														Average # of Assignments the Last 12 Months	Oct 14 to Nov 14 Numerical Difference	Nov 14 to Nov 13 Numerical Difference
	Nov 2013	Dec 2013	Jan 2014	Feb 2014	Mar 2014	Apr 2014	May 2014	Jun 2014	Jul 2014	Aug 2014	Sep 2014	Oct 2014	Nov 2014			
Atlantic	223	218	256	233	267	242	288	234	229	221	233	292	234	246	-58	11
Bergen	344	314	359	307	342	334	378	295	228	235	337	392	328	321	-64	-16
Burlington	256	233	318	278	342	312	351	279	242	248	251	335	238	286	-97	-18
Camden	485	494	483	464	495	547	567	528	490	400	537	594	502	508	-92	17
Cape May	61	82	89	84	74	87	112	64	96	92	95	87	59	85	-28	-2
Cumberland	210	183	197	214	208	222	247	210	218	147	214	224	189	206	-35	-21
Essex	653	574	651	563	762	664	753	632	536	516	630	725	579	632	-146	-74
Gloucester	248	213	259	258	266	234	297	295	254	206	261	300	228	256	-72	-20
Hudson	441	429	493	399	537	437	509	466	338	275	446	532	349	434	-183	-92
Hunterdon	44	43	65	51	68	50	59	41	57	39	50	47	33	50	-14	-11
Mercer	237	215	251	228	296	279	299	279	246	203	261	294	246	258	-48	9
Middlesex	395	366	454	366	499	438	475	400	336	284	413	458	341	403	-117	-54
Monmouth	354	337	373	357	429	379	400	388	293	334	375	413	346	369	-67	-8
Morris	206	206	242	209	224	237	250	214	198	195	223	237	227	222	-10	21
Ocean	385	340	432	350	429	369	411	416	372	316	384	456	387	389	-69	2
Passaic	381	388	394	328	471	472	478	402	340	299	384	427	382	397	-45	1
Salem	74	72	85	76	77	79	85	75	76	82	101	96	50	80	-46	-24
Somerset	148	132	174	159	196	171	159	180	125	119	139	152	134	153	-18	-14
Sussex	110	73	115	86	88	106	116	92	96	75	87	84	96	93	12	-14
Union	295	302	329	303	337	347	306	303	245	204	286	354	311	302	-43	16
Warren	85	96	95	106	111	103	99	99	77	73	93	113	87	96	-26	2
<b>County Subtotals</b>	<b>5,635</b>	<b>5,310</b>	<b>6,114</b>	<b>5,419</b>	<b>6,518</b>	<b>6,109</b>	<b>6,639</b>	<b>5,892</b>	<b>5,092</b>	<b>4,563</b>	<b>5,800</b>	<b>6,612</b>	<b>5,346</b>	<b>5,785</b>	<b>-1,266</b>	<b>-289</b>
Central Region IAIU	61	35	63	54	60	60	75	60	54	40	55	70	54	57	-16	-7
Metro Region IAIU	49	47	42	44	91	63	57	69	43	26	47	70	45	54	-25	-4
Northern Region IAIU	67	63	77	66	88	60	85	59	50	41	58	80	47	65	-33	-20
Southern Region IAIU	70	54	69	50	78	79	106	74	61	52	64	85	59	69	-26	-11
<b>IAIU Subtotals</b>	<b>247</b>	<b>199</b>	<b>251</b>	<b>214</b>	<b>317</b>	<b>262</b>	<b>323</b>	<b>262</b>	<b>208</b>	<b>159</b>	<b>224</b>	<b>305</b>	<b>205</b>	<b>244</b>	<b>-100</b>	<b>-42</b>
<b>Unable to Determine<sup>1</sup></b>	<b>144</b>	<b>115</b>	<b>146</b>	<b>119</b>	<b>155</b>	<b>143</b>	<b>171</b>	<b>156</b>	<b>149</b>	<b>129</b>	<b>141</b>	<b>174</b>	<b>117</b>	<b>143</b>	<b>-57</b>	<b>-27</b>
<b>Other Offices</b>	<b>2</b>	<b>2</b>	<b>2</b>	<b>0</b>	<b>4</b>	<b>2</b>	<b>3</b>	<b>3</b>	<b>0</b>	<b>0</b>	<b>1</b>	<b>4</b>	<b>2</b>	<b>2</b>	<b>-2</b>	<b>0</b>
<b>Grand Total</b>	<b>6,028</b>	<b>5,626</b>	<b>6,513</b>	<b>5,752</b>	<b>6,994</b>	<b>6,516</b>	<b>7,136</b>	<b>6,313</b>	<b>5,449</b>	<b>4,851</b>	<b>6,166</b>	<b>7,095</b>	<b>5,670</b>	<b>6,173</b>	<b>-1,425</b>	<b>-358</b>

<sup>1</sup>CPS Reports or CWS Referrals not assigned to an office through the Assignment Designee, but were assigned to an office for an assessment or investigation.



**Table 5: Monthly Count of CPS Reports and CWS Referrals Assigned to CP&P Local Offices**

County	Local Office	Type of Referral														Total
			Nov 2013	Dec 2013	Jan 2014	Feb 2014	Mar 2014	Apr 2014	May 2014	Jun 2014	Jul 2014	Aug 2014	Sep 2014	Oct 2014	Nov 2014	
ATLANTIC	Atlantic East	CPS	107	94	118	93	116	117	124	94	104	98	108	125	100	1,398
		CWS	30	25	31	36	36	28	32	27	23	32	23	35	36	394
		<b>Total</b>	<b>137</b>	<b>119</b>	<b>149</b>	<b>129</b>	<b>152</b>	<b>145</b>	<b>156</b>	<b>121</b>	<b>127</b>	<b>130</b>	<b>131</b>	<b>160</b>	<b>136</b>	<b>1,792</b>
	Atlantic West	CPS	75	76	80	84	94	75	107	89	75	71	82	103	75	1,086
		CWS	11	23	27	20	21	22	25	24	27	20	20	29	23	292
		<b>Total</b>	<b>86</b>	<b>99</b>	<b>107</b>	<b>104</b>	<b>115</b>	<b>97</b>	<b>132</b>	<b>113</b>	<b>102</b>	<b>91</b>	<b>102</b>	<b>132</b>	<b>98</b>	<b>1,378</b>
	County Totals	CPS	182	170	198	177	210	192	231	183	179	169	190	228	175	2,484
		CWS	41	48	58	56	57	50	57	51	50	52	43	64	59	686
		<b>Total</b>	<b>223</b>	<b>218</b>	<b>256</b>	<b>233</b>	<b>267</b>	<b>242</b>	<b>288</b>	<b>234</b>	<b>229</b>	<b>221</b>	<b>233</b>	<b>292</b>	<b>234</b>	<b>3,170</b>
BERGEN	Bergen Central	CPS	115	90	114	97	127	115	121	97	68	67	107	111	109	1,338
		CWS	33	29	39	25	35	39	45	31	23	24	38	51	49	461
		<b>Total</b>	<b>148</b>	<b>119</b>	<b>153</b>	<b>122</b>	<b>162</b>	<b>154</b>	<b>166</b>	<b>128</b>	<b>91</b>	<b>91</b>	<b>145</b>	<b>162</b>	<b>158</b>	<b>1,799</b>
	Bergen South	CPS	149	149	162	137	145	136	163	129	99	102	142	181	124	1,818
		CWS	47	46	44	48	35	44	49	38	38	42	50	49	46	576
		<b>Total</b>	<b>196</b>	<b>195</b>	<b>206</b>	<b>185</b>	<b>180</b>	<b>180</b>	<b>212</b>	<b>167</b>	<b>137</b>	<b>144</b>	<b>192</b>	<b>230</b>	<b>170</b>	<b>2,394</b>
	County Totals	CPS	264	239	276	234	272	251	284	226	167	169	249	292	233	3,156
		CWS	80	75	83	73	70	83	94	69	61	66	88	100	95	1,037
		<b>Total</b>	<b>344</b>	<b>314</b>	<b>359</b>	<b>307</b>	<b>342</b>	<b>334</b>	<b>378</b>	<b>295</b>	<b>228</b>	<b>235</b>	<b>337</b>	<b>392</b>	<b>328</b>	<b>4,193</b>
BURLINGTON	Burlington East	CPS	99	89	120	104	128	119	132	103	98	89	88	115	107	1,391
		CWS	21	31	29	27	40	23	37	32	27	35	32	38	25	397
		<b>Total</b>	<b>120</b>	<b>120</b>	<b>149</b>	<b>131</b>	<b>168</b>	<b>142</b>	<b>169</b>	<b>135</b>	<b>125</b>	<b>124</b>	<b>120</b>	<b>153</b>	<b>132</b>	<b>1,788</b>
	Burlington West	CPS	113	83	139	108	139	133	141	111	94	90	89	145	80	1,465
		CWS	23	30	30	39	35	37	41	33	23	34	42	37	26	430
		<b>Total</b>	<b>136</b>	<b>113</b>	<b>169</b>	<b>147</b>	<b>174</b>	<b>170</b>	<b>182</b>	<b>144</b>	<b>117</b>	<b>124</b>	<b>131</b>	<b>182</b>	<b>106</b>	<b>1,895</b>
	County Totals	CPS	212	172	259	212	267	252	273	214	192	179	177	260	187	2,856
		CWS	44	61	59	66	75	60	78	65	50	69	74	75	51	827
		<b>Total</b>	<b>256</b>	<b>233</b>	<b>318</b>	<b>278</b>	<b>342</b>	<b>312</b>	<b>351</b>	<b>279</b>	<b>242</b>	<b>248</b>	<b>251</b>	<b>335</b>	<b>238</b>	<b>3,683</b>
CAMDEN	Camden Central	CPS	99	107	119	115	100	127	110	127	111	97	109	151	100	1,472
		CWS	38	31	28	23	23	37	48	39	34	30	35	26	28	420
		<b>Total</b>	<b>137</b>	<b>138</b>	<b>147</b>	<b>138</b>	<b>123</b>	<b>164</b>	<b>158</b>	<b>166</b>	<b>145</b>	<b>127</b>	<b>144</b>	<b>177</b>	<b>128</b>	<b>1,892</b>
	Camden East	CPS	101	100	96	85	97	112	118	101	94	82	92	116	91	1,285
		CWS	29	36	25	29	45	34	21	38	27	18	46	37	39	424
		<b>Total</b>	<b>130</b>	<b>136</b>	<b>121</b>	<b>114</b>	<b>142</b>	<b>146</b>	<b>139</b>	<b>139</b>	<b>121</b>	<b>100</b>	<b>138</b>	<b>153</b>	<b>130</b>	<b>1,709</b>
	Camden North	CPS	86	93	94	95	94	107	96	104	91	71	95	122	105	1,253
		CWS	26	28	22	30	27	39	41	31	27	15	25	23	28	362
		<b>Total</b>	<b>112</b>	<b>121</b>	<b>116</b>	<b>125</b>	<b>121</b>	<b>146</b>	<b>137</b>	<b>135</b>	<b>118</b>	<b>86</b>	<b>120</b>	<b>145</b>	<b>133</b>	<b>1,615</b>
	Camden South	CPS	84	80	82	63	77	75	101	62	82	64	94	92	88	1,044
		CWS	22	19	17	24	32	16	32	26	24	23	41	27	23	326
		<b>Total</b>	<b>106</b>	<b>99</b>	<b>99</b>	<b>87</b>	<b>109</b>	<b>91</b>	<b>133</b>	<b>88</b>	<b>106</b>	<b>87</b>	<b>135</b>	<b>119</b>	<b>111</b>	<b>1,370</b>
	County Totals	CPS	370	380	391	358	368	421	425	394	378	314	390	481	384	5,054
		CWS	115	114	92	106	127	126	142	134	112	86	147	113	118	1,532
		<b>Total</b>	<b>485</b>	<b>494</b>	<b>483</b>	<b>464</b>	<b>495</b>	<b>547</b>	<b>567</b>	<b>528</b>	<b>490</b>	<b>400</b>	<b>537</b>	<b>594</b>	<b>502</b>	<b>6,586</b>
CAPE MAY	Cape May	CPS	46	61	67	61	57	69	92	45	70	76	74	73	47	838
		CWS	15	21	22	23	17	18	20	19	26	16	21	14	12	244
		<b>Total</b>	<b>61</b>	<b>82</b>	<b>89</b>	<b>84</b>	<b>74</b>	<b>87</b>	<b>112</b>	<b>64</b>	<b>96</b>	<b>92</b>	<b>95</b>	<b>87</b>	<b>59</b>	<b>1,082</b>
	County Totals	CPS	46	61	67	61	57	69	92	45	70	76	74	73	47	838
		CWS	15	21	22	23	17	18	20	19	26	16	21	14	12	244
<b>Total</b>	<b>61</b>	<b>82</b>	<b>89</b>	<b>84</b>	<b>74</b>	<b>87</b>	<b>112</b>	<b>64</b>	<b>96</b>	<b>92</b>	<b>95</b>	<b>87</b>	<b>59</b>	<b>1,082</b>		
CUMBERLAND	Cumberland East	CPS	49	59	45	60	48	51	64	57	67	30	55	69	56	710
		CWS	16	9	16	12	13	21	18	22	5	18	18	17	14	199
		<b>Total</b>	<b>65</b>	<b>68</b>	<b>61</b>	<b>72</b>	<b>61</b>	<b>72</b>	<b>82</b>	<b>79</b>	<b>72</b>	<b>48</b>	<b>73</b>	<b>86</b>	<b>70</b>	<b>909</b>
	Cumberland West	CPS	107	93	107	109	112	120	132	109	121	70	116	102	91	1,389
		CWS	38	22	29	33	35	30	33	22	25	29	25	36	28	385
		<b>Total</b>	<b>145</b>	<b>115</b>	<b>136</b>	<b>142</b>	<b>147</b>	<b>150</b>	<b>165</b>	<b>131</b>	<b>146</b>	<b>99</b>	<b>141</b>	<b>138</b>	<b>119</b>	<b>1,774</b>
	County Totals	CPS	156	152	152	169	160	171	196	166	188	100	171	171	147	2,099
		CWS	54	31	45	45	48	51	51	44	30	47	43	53	42	584
<b>Total</b>	<b>210</b>	<b>183</b>	<b>197</b>	<b>214</b>	<b>208</b>	<b>222</b>	<b>247</b>	<b>210</b>	<b>218</b>	<b>147</b>	<b>214</b>	<b>224</b>	<b>189</b>	<b>2,683</b>		



**Table 5: Monthly Count of CPS Reports and CWS Referrals Assigned to CP&P Local Offices**

County	Local Office	Type of Referral														Total	
			Nov 2013	Dec 2013	Jan 2014	Feb 2014	Mar 2014	Apr 2014	May 2014	Jun 2014	Jul 2014	Aug 2014	Sep 2014	Oct 2014	Nov 2014		
MIDDLESEX	Middlesex Central	CPS	74	73	82	71	87	78	87	79	65	51	81	90	54	972	
		CWS	22	13	22	19	21	22	20	19	19	22	22	24	14	259	
		<b>Total</b>	<b>96</b>	<b>86</b>	<b>104</b>	<b>90</b>	<b>108</b>	<b>100</b>	<b>107</b>	<b>98</b>	<b>84</b>	<b>73</b>	<b>103</b>	<b>114</b>	<b>68</b>	<b>1,231</b>	
	Middlesex Coastal	CPS	112	96	131	97	171	135	149	122	118	92	103	137	105	1,568	
		CWS	22	35	32	21	37	34	28	34	20	17	47	38	36	401	
		<b>Total</b>	<b>134</b>	<b>131</b>	<b>163</b>	<b>118</b>	<b>208</b>	<b>169</b>	<b>177</b>	<b>156</b>	<b>138</b>	<b>109</b>	<b>150</b>	<b>175</b>	<b>141</b>	<b>1,969</b>	
	Middlesex West	CPS	127	107	153	124	143	136	162	109	87	81	119	134	86	1,568	
		CWS	38	42	34	34	40	33	29	37	27	21	41	35	46	457	
		<b>Total</b>	<b>165</b>	<b>149</b>	<b>187</b>	<b>158</b>	<b>183</b>	<b>169</b>	<b>191</b>	<b>146</b>	<b>114</b>	<b>102</b>	<b>160</b>	<b>169</b>	<b>132</b>	<b>2,025</b>	
	County Totals	CPS	313	276	366	292	401	349	398	310	270	224	303	361	245	4,108	
		CWS	82	90	88	74	98	89	77	90	66	60	110	97	96	1,117	
		<b>Total</b>	<b>395</b>	<b>366</b>	<b>454</b>	<b>366</b>	<b>499</b>	<b>438</b>	<b>475</b>	<b>400</b>	<b>336</b>	<b>284</b>	<b>413</b>	<b>458</b>	<b>341</b>	<b>5,225</b>	
MONMOUTH	Monmouth North	CPS	167	151	147	147	183	166	183	139	125	142	156	169	141	2,016	
		CWS	41	50	36	40	51	57	35	52	39	41	45	49	32	568	
		<b>Total</b>	<b>208</b>	<b>201</b>	<b>183</b>	<b>187</b>	<b>234</b>	<b>223</b>	<b>218</b>	<b>191</b>	<b>164</b>	<b>183</b>	<b>201</b>	<b>218</b>	<b>173</b>	<b>2,584</b>	
	Monmouth South	CPS	112	104	144	136	150	117	131	153	111	119	134	153	129	1,693	
		CWS	34	32	46	34	45	39	51	44	18	32	40	42	44	501	
		<b>Total</b>	<b>146</b>	<b>136</b>	<b>190</b>	<b>170</b>	<b>195</b>	<b>156</b>	<b>182</b>	<b>197</b>	<b>129</b>	<b>151</b>	<b>174</b>	<b>195</b>	<b>173</b>	<b>2,194</b>	
	County Totals	CPS	279	255	291	283	333	283	314	292	236	261	290	322	270	3,709	
		CWS	75	82	82	74	96	96	86	96	57	73	85	91	76	1,069	
		<b>Total</b>	<b>354</b>	<b>337</b>	<b>373</b>	<b>357</b>	<b>429</b>	<b>379</b>	<b>400</b>	<b>388</b>	<b>293</b>	<b>334</b>	<b>375</b>	<b>413</b>	<b>346</b>	<b>4,778</b>	
	MORRIS	Morris West	CPS	101	94	110	108	97	102	97	87	80	87	85	108	91	1,247
			CWS	23	29	26	26	26	33	32	32	26	30	32	25	39	379
			<b>Total</b>	<b>124</b>	<b>123</b>	<b>136</b>	<b>134</b>	<b>123</b>	<b>135</b>	<b>129</b>	<b>119</b>	<b>106</b>	<b>117</b>	<b>117</b>	<b>133</b>	<b>130</b>	<b>1,626</b>
Morris East		CPS	62	64	76	49	77	85	82	66	70	53	87	80	69	920	
		CWS	20	19	30	26	24	17	39	29	22	25	19	24	28	322	
		<b>Total</b>	<b>82</b>	<b>83</b>	<b>106</b>	<b>75</b>	<b>101</b>	<b>102</b>	<b>121</b>	<b>95</b>	<b>92</b>	<b>78</b>	<b>106</b>	<b>104</b>	<b>97</b>	<b>1,242</b>	
County Totals		CPS	163	158	186	157	174	187	179	153	150	140	172	188	160	2,167	
		CWS	43	48	56	52	50	50	71	61	48	55	51	49	67	701	
		<b>Total</b>	<b>206</b>	<b>206</b>	<b>242</b>	<b>209</b>	<b>224</b>	<b>237</b>	<b>250</b>	<b>214</b>	<b>198</b>	<b>195</b>	<b>223</b>	<b>237</b>	<b>227</b>	<b>2,868</b>	
OCEAN		Ocean North	CPS	149	127	146	134	128	149	161	148	132	110	139	132	147	1,802
			CWS	34	29	45	31	44	30	38	36	33	35	36	46	42	479
			<b>Total</b>	<b>183</b>	<b>156</b>	<b>191</b>	<b>165</b>	<b>172</b>	<b>179</b>	<b>199</b>	<b>184</b>	<b>165</b>	<b>145</b>	<b>175</b>	<b>178</b>	<b>189</b>	<b>2,281</b>
	Ocean South	CPS	159	150	198	145	207	155	156	188	156	141	160	226	161	2,202	
		CWS	43	34	43	40	50	35	56	44	51	30	49	52	37	564	
		<b>Total</b>	<b>202</b>	<b>184</b>	<b>241</b>	<b>185</b>	<b>257</b>	<b>190</b>	<b>212</b>	<b>232</b>	<b>207</b>	<b>171</b>	<b>209</b>	<b>278</b>	<b>198</b>	<b>2,766</b>	
	County Totals	CPS	308	277	344	279	335	304	317	336	288	251	299	358	308	4,004	
		CWS	77	63	88	71	94	65	94	80	84	65	85	98	79	1,043	
		<b>Total</b>	<b>385</b>	<b>340</b>	<b>432</b>	<b>350</b>	<b>429</b>	<b>369</b>	<b>411</b>	<b>416</b>	<b>372</b>	<b>316</b>	<b>384</b>	<b>456</b>	<b>387</b>	<b>5,047</b>	
	PASSAIC	Passaic Central	CPS	161	139	165	152	200	184	203	159	128	112	140	182	161	2,086
			CWS	37	47	41	44	71	50	55	60	49	34	53	53	53	647
			<b>Total</b>	<b>198</b>	<b>186</b>	<b>206</b>	<b>196</b>	<b>271</b>	<b>234</b>	<b>258</b>	<b>219</b>	<b>177</b>	<b>146</b>	<b>193</b>	<b>235</b>	<b>214</b>	<b>2,733</b>
Passaic North		CPS	137	162	136	104	159	176	176	131	122	113	153	141	119	1,829	
		CWS	46	40	52	28	41	62	44	52	41	40	38	51	49	584	
		<b>Total</b>	<b>183</b>	<b>202</b>	<b>188</b>	<b>132</b>	<b>200</b>	<b>238</b>	<b>220</b>	<b>183</b>	<b>163</b>	<b>153</b>	<b>191</b>	<b>192</b>	<b>168</b>	<b>2,413</b>	
County Totals		CPS	298	301	301	256	359	360	379	290	250	225	293	323	280	3,915	
		CWS	83	87	93	72	112	112	99	112	90	74	91	104	102	1,231	
		<b>Total</b>	<b>381</b>	<b>388</b>	<b>394</b>	<b>328</b>	<b>471</b>	<b>472</b>	<b>478</b>	<b>402</b>	<b>340</b>	<b>299</b>	<b>384</b>	<b>427</b>	<b>382</b>	<b>5,146</b>	
SALEM		Salem	CPS	52	58	66	59	56	67	66	54	57	69	82	80	41	807
			CWS	22	14	19	17	21	12	19	21	19	13	19	16	9	221
			<b>Total</b>	<b>74</b>	<b>72</b>	<b>85</b>	<b>76</b>	<b>77</b>	<b>79</b>	<b>85</b>	<b>75</b>	<b>76</b>	<b>82</b>	<b>101</b>	<b>96</b>	<b>50</b>	<b>1,028</b>
	County Totals	CPS	52	58	66	59	56	67	66	54	57	69	82	80	41	807	
		CWS	22	14	19	17	21	12	19	21	19	13	19	16	9	221	
		<b>Total</b>	<b>74</b>	<b>72</b>	<b>85</b>	<b>76</b>	<b>77</b>	<b>79</b>	<b>85</b>	<b>75</b>	<b>76</b>	<b>82</b>	<b>101</b>	<b>96</b>	<b>50</b>	<b>1,028</b>	
SOMERSET	Somerset	CPS	122	103	142	125	161	133	120	137	102	93	110	116	95	1,559	
		CWS	26	29	32	34	35	38	39	43	23	26	29	36	39	429	
		<b>Total</b>	<b>148</b>	<b>132</b>	<b>174</b>	<b>159</b>	<b>196</b>	<b>171</b>	<b>159</b>	<b>180</b>	<b>125</b>	<b>119</b>	<b>139</b>	<b>152</b>	<b>134</b>	<b>1,988</b>	
	County Totals	CPS	122	103	142	125	161	133	120	137	102	93	110	116	95	1,559	
		CWS	26	29	32	34	35	38	39	43	23	26	29	36	39	429	
		<b>Total</b>	<b>148</b>	<b>132</b>	<b>174</b>	<b>159</b>	<b>196</b>	<b>171</b>	<b>159</b>	<b>180</b>	<b>125</b>	<b>119</b>	<b>139</b>	<b>152</b>	<b>134</b>	<b>1,988</b>	

**Table 5: Monthly Count of CPS Reports and CWS Referrals Assigned to CP&P Local Offices**

County	Local Office	Type of Referral														Total
			Nov 2013	Dec 2013	Jan 2014	Feb 2014	Mar 2014	Apr 2014	May 2014	Jun 2014	Jul 2014	Aug 2014	Sep 2014	Oct 2014	Nov 2014	
SUSSEX	Sussex	CPS	82	58	86	71	69	87	88	71	73	55	59	60	71	930
		CWS	28	15	29	15	19	19	28	21	23	20	28	24	25	294
		<b>Total</b>	<b>110</b>	<b>73</b>	<b>115</b>	<b>86</b>	<b>88</b>	<b>106</b>	<b>116</b>	<b>92</b>	<b>96</b>	<b>75</b>	<b>87</b>	<b>84</b>	<b>96</b>	<b>1,224</b>
	County Totals	CPS	82	58	86	71	69	87	88	71	73	55	59	60	71	930
		CWS	28	15	29	15	19	19	28	21	23	20	28	24	25	294
		<b>Total</b>	<b>110</b>	<b>73</b>	<b>115</b>	<b>86</b>	<b>88</b>	<b>106</b>	<b>116</b>	<b>92</b>	<b>96</b>	<b>75</b>	<b>87</b>	<b>84</b>	<b>96</b>	<b>1,224</b>
UNION	Union Central	CPS	76	75	69	73	79	93	69	73	59	36	63	94	81	940
		CWS	20	20	18	27	34	19	20	21	24	20	21	37	17	298
		<b>Total</b>	<b>96</b>	<b>95</b>	<b>87</b>	<b>100</b>	<b>113</b>	<b>112</b>	<b>89</b>	<b>94</b>	<b>83</b>	<b>56</b>	<b>84</b>	<b>131</b>	<b>98</b>	<b>1,238</b>
	Union East	CPS	87	96	109	77	103	110	79	92	63	49	69	94	83	1,111
		CWS	29	24	30	20	29	34	25	38	26	26	28	26	28	363
		<b>Total</b>	<b>116</b>	<b>120</b>	<b>139</b>	<b>97</b>	<b>132</b>	<b>144</b>	<b>104</b>	<b>130</b>	<b>89</b>	<b>75</b>	<b>97</b>	<b>120</b>	<b>111</b>	<b>1,474</b>
	Union West	CPS	67	70	80	77	59	67	88	59	47	58	83	78	80	913
		CWS	16	17	23	29	33	24	25	20	26	15	22	25	22	297
		<b>Total</b>	<b>83</b>	<b>87</b>	<b>103</b>	<b>106</b>	<b>92</b>	<b>91</b>	<b>113</b>	<b>79</b>	<b>73</b>	<b>73</b>	<b>105</b>	<b>103</b>	<b>102</b>	<b>1,210</b>
	County Totals	CPS	230	241	258	227	241	270	236	224	169	143	215	266	244	2,964
		CWS	65	61	71	76	96	77	70	79	76	61	71	88	67	958
		<b>Total</b>	<b>295</b>	<b>302</b>	<b>329</b>	<b>303</b>	<b>337</b>	<b>347</b>	<b>306</b>	<b>303</b>	<b>245</b>	<b>204</b>	<b>286</b>	<b>354</b>	<b>311</b>	<b>3,922</b>
WARREN	Warren	CPS	70	77	70	82	81	76	76	72	66	54	72	96	64	956
		CWS	15	19	25	24	30	27	23	27	11	19	21	17	23	281
		<b>Total</b>	<b>85</b>	<b>96</b>	<b>95</b>	<b>106</b>	<b>111</b>	<b>103</b>	<b>99</b>	<b>99</b>	<b>77</b>	<b>73</b>	<b>93</b>	<b>113</b>	<b>87</b>	<b>1,237</b>
	County Totals	CPS	70	77	70	82	81	76	76	72	66	54	72	96	64	956
		CWS	15	19	25	24	30	27	23	27	11	19	21	17	23	281
		<b>Total</b>	<b>85</b>	<b>96</b>	<b>95</b>	<b>106</b>	<b>111</b>	<b>103</b>	<b>99</b>	<b>99</b>	<b>77</b>	<b>73</b>	<b>93</b>	<b>113</b>	<b>87</b>	<b>1,237</b>
County CPS Referral Total		CPS	4,347	4,120	4,787	4,208	5,015	4,751	5,097	4,472	3,922	3,406	4,387	5,122	3,973	57,607
County CWS Referral Total		CWS	1,288	1,190	1,327	1,211	1,503	1,358	1,542	1,420	1,170	1,157	1,413	1,490	1,373	17,442
County Referral Total		<b>Total</b>	<b>5,635</b>	<b>5,310</b>	<b>6,114</b>	<b>5,419</b>	<b>6,518</b>	<b>6,109</b>	<b>6,639</b>	<b>5,892</b>	<b>5,092</b>	<b>4,563</b>	<b>5,800</b>	<b>6,612</b>	<b>5,346</b>	<b>75,049</b>
Central Region IAIU		CPS	61	35	63	54	60	60	75	60	54	40	55	70	54	741
		CWS	0	0	0	0	0	0	0	0	0	0	0	0	0	0
		<b>Total</b>	<b>61</b>	<b>35</b>	<b>63</b>	<b>54</b>	<b>60</b>	<b>60</b>	<b>75</b>	<b>60</b>	<b>54</b>	<b>40</b>	<b>55</b>	<b>70</b>	<b>54</b>	<b>741</b>
Metro Region IAIU		CPS	49	47	42	44	91	63	57	69	43	25	47	70	45	692
		CWS	0	0	0	0	0	0	0	0	0	1	0	1	0	2
		<b>Total</b>	<b>49</b>	<b>47</b>	<b>42</b>	<b>44</b>	<b>91</b>	<b>63</b>	<b>57</b>	<b>69</b>	<b>43</b>	<b>26</b>	<b>47</b>	<b>71</b>	<b>45</b>	<b>694</b>
Northern Region IAIU		CPS	65	63	77	66	88	60	85	59	50	41	58	80	47	839
		CWS	2	0	0	0	0	0	0	0	0	0	0	0	0	2
		<b>Total</b>	<b>67</b>	<b>63</b>	<b>77</b>	<b>66</b>	<b>88</b>	<b>60</b>	<b>85</b>	<b>59</b>	<b>50</b>	<b>41</b>	<b>58</b>	<b>80</b>	<b>47</b>	<b>841</b>
Southern Region IAIU		CPS	70	54	69	50	78	79	106	74	61	52	64	85	59	901
		CWS	0	0	0	0	0	0	0	0	0	0	0	0	0	0
		<b>Total</b>	<b>70</b>	<b>54</b>	<b>69</b>	<b>50</b>	<b>78</b>	<b>79</b>	<b>106</b>	<b>74</b>	<b>61</b>	<b>52</b>	<b>64</b>	<b>85</b>	<b>59</b>	<b>901</b>
IAIU CPS Subtotal		CPS	245	199	251	214	317	262	323	262	208	158	224	305	205	3,173
IAIU CWS Subtotal		CWS	2	0	0	0	0	0	0	0	0	1	1	0	0	4
IAIU Subtotal		<b>Total</b>	<b>247</b>	<b>199</b>	<b>251</b>	<b>214</b>	<b>317</b>	<b>262</b>	<b>323</b>	<b>262</b>	<b>208</b>	<b>159</b>	<b>225</b>	<b>305</b>	<b>205</b>	<b>3,177</b>
County and IAIU CPS Subtotal		CPS	4,592	4,319	5,038	4,422	5,332	5,013	5,420	4,734	4,130	3,564	4,611	5,427	4,178	60,780
County and IAIU CWS Subtotal		CWS	1,290	1,190	1,327	1,211	1,503	1,358	1,542	1,420	1,170	1,158	1,414	1,490	1,373	17,446
Unable to Determine <sup>(1)</sup>		<b>Total</b>	<b>144</b>	<b>115</b>	<b>146</b>	<b>119</b>	<b>155</b>	<b>143</b>	<b>171</b>	<b>156</b>	<b>149</b>	<b>129</b>	<b>141</b>	<b>174</b>	<b>117</b>	<b>1,859</b>
Other Offices		<b>Total</b>	<b>2</b>	<b>2</b>	<b>2</b>	<b>0</b>	<b>4</b>	<b>2</b>	<b>3</b>	<b>3</b>	<b>0</b>	<b>0</b>	<b>4</b>	<b>2</b>	<b>24</b>	
Grand Total		<b>Total</b>	<b>6,028</b>	<b>5,626</b>	<b>6,513</b>	<b>5,752</b>	<b>6,994</b>	<b>6,516</b>	<b>7,136</b>	<b>6,313</b>	<b>5,449</b>	<b>4,851</b>	<b>6,166</b>	<b>7,095</b>	<b>5,670</b>	<b>80,109</b>

<sup>(1)</sup>CPS Reports or CWS Referrals not assigned to an office through the Assignment Designee, but were assigned to an office for an assessment or investigation.