



# Monthly Screening and Investigation Report April 2014

Allison Blake, Ph.D., L.S.W  
Commissioner

May 20, 2014

## Table of Contents

<b>Table 1: Monthly State Central Registry Automatic Call Distribution System (ACD) and NJ SPIRIT Statistics</b>	<b>2</b>
<b>Table 2: Type of CPS Reports and CWS Referrals Assigned to All Field Offices by Date Received</b>	<b>3</b>
<b>Chart 1: CPS &amp; CWS Referrals Assigned to All CP&amp;P Offices</b>	<b>6</b>
<b>Table 3: Source of CPS Reports and CWS Referrals</b>	<b>7</b>
<b>Table 4: Monthly Count of CPS Reports and CWS Referrals Assigned to Local Offices</b>	<b>9</b>
<b>Table 5: Monthly Count of CPS Reports and CWS Referrals Assigned to Counties</b>	<b>11</b>
<b>Table 6: Monthly Count of CPS Reports and CWS Referrals Assigned to Counties</b>	<b>12</b>

*The data contained in this report is considered preliminary and as a result, these figures might be different than the final reported figures. The data is produced for continuous quality improvement across DCF.*

**Table 1: Monthly State Central Registry Automatic Call Distribution System (ACD) and NJ SPIRIT Statistics**

**April 2014**

2013 - 2014	Automatic Call Distribution System (ACD) Activity						SCR Calls Recorded in New Jersey Spirit <sup>(3)</sup>												SCR Reports Assigned to Offices Thru Assignment Designee				SCR Reports Assigned to Offices Not Thru Assignment Designee <sup>(4)(5)</sup>				NJS Data Total
	SCR Total Offered Calls from ACD System <sup>(1)</sup>	Resulting Number of Intakes in NJS <sup>(6)</sup>	Intakes Not Linked to NJS Case/Child <sup>(7)</sup>		Intakes Linked to NJS Case/Child <sup>(8)</sup>		CPS Reports		CWS Referrals		No Action Required (NAR)		Related Information (RI)		Information & Referral (I&R)		Information Only (IO)		CPS Reports		CWS Referrals		CPS Reports <sup>(4)</sup>		CWS Referrals <sup>(5)</sup>		
			Number	Percent	Number	Percent	Number	Percent	Number	Percent	Number	Percent	Number	Percent	Number	Percent	Number	Percent	Number	Percent	Number	Percent	Number	Percent	Number	Percent	
April 2013	14,925	16,414	4,357	26.5%	12,057	73.5%	5,389	32.8%	1,444	8.8%	415	2.5%	3,991	24.3%	1,830	11.1%	3,345	20.4%	5,292	77.5%	1,399	20.5%	96	1.4%	45	0.7%	6,832
May 2013	16,376	18,133	4,790	26.4%	13,343	73.6%	5,948	32.8%	1,556	8.6%	402	2.2%	4,625	25.5%	1,946	10.7%	3,656	20.2%	5,833	77.7%	1,490	19.9%	114	1.5%	66	0.9%	7,503
June 2013	14,230	15,609	4,241	27.2%	11,368	72.8%	4,915	31.5%	1,263	8.1%	348	2.2%	4,133	26.5%	1,681	10.8%	3,269	20.9%	4,809	77.9%	1,212	19.6%	105	1.7%	51	0.8%	6,177
July 2013	12,870	14,377	4,077	28.4%	10,300	71.6%	4,302	29.9%	1,255	8.7%	375	2.6%	3,703	25.8%	1,591	11.1%	3,151	21.9%	4,217	75.9%	1,198	21.6%	84	1.5%	59	1.1%	5,558
August 2013	12,375	14,994	4,664	31.1%	10,330	68.9%	4,288	28.6%	1,198	8.0%	377	2.5%	3,934	26.2%	2,133	14.2%	3,064	20.4%	4,180	76.2%	1,144	20.9%	107	2.0%	54	1.0%	5,485
September 2013	14,201	15,762	4,445	28.2%	11,317	71.8%	4,814	30.5%	1,291	8.2%	395	2.5%	4,059	25.8%	1,957	12.4%	3,246	20.6%	4,686	76.8%	1,233	20.2%	127	2.1%	56	0.9%	6,102
October 2013	15,671	17,315	4,608	26.6%	12,707	73.4%	5,563	32.1%	1,530	8.8%	483	2.8%	4,308	24.9%	1,999	11.5%	3,432	19.8%	5,477	77.2%	1,476	20.8%	86	1.2%	56	0.8%	7,095
November 2013	13,950	15,260	4,006	26.3%	11,254	73.7%	4,687	30.7%	1,343	8.8%	261	1.7%	4,277	28.0%	1,586	10.4%	3,106	20.4%	4,586	76.1%	1,298	21.5%	100	1.7%	44	0.7%	6,028
December 2013	12,568	13,962	3,837	27.5%	10,125	72.5%	4,365	31.3%	1,260	9.0%	391	2.8%	3,445	24.7%	1,554	11.1%	2,947	21.1%	4,289	76.2%	1,222	21.7%	76	1.4%	39	0.7%	5,626
January 2014	15,091	16,412	4,577	27.9%	11,835	72.1%	5,097	31.1%	1,416	8.6%	346	2.1%	4,233	25.8%	1,728	10.5%	3,592	21.9%	4,999	76.8%	1,368	21.0%	98	1.5%	48	0.7%	6,513
February 2014	13,092	14,377	3,907	27.2%	10,470	72.8%	4,458	31.0%	1,293	9.0%	306	2.1%	3,838	26.7%	1,395	9.7%	3,087	21.5%	4,380	76.1%	1,253	21.8%	77	1.3%	42	0.7%	5,752
March 2014	15,236	16,707	4,323	25.9%	12,384	74.1%	5,408	32.4%	1,585	9.5%	363	2.2%	4,257	25.5%	1,774	10.6%	3,320	19.9%	5,306	75.9%	1,533	21.9%	102	1.5%	53	0.8%	6,994
<b>April 2014</b>	<b>14,056</b>	<b>15,642</b>	<b>4,161</b>	<b>26.6%</b>	<b>11,481</b>	<b>73.4%</b>	<b>5,052</b>	<b>32.3%</b>	<b>1,467</b>	<b>9.4%</b>	<b>400</b>	<b>2.6%</b>	<b>3,846</b>	<b>24.6%</b>	<b>1,676</b>	<b>10.7%</b>	<b>3,201</b>	<b>20.5%</b>	<b>4,959</b>	<b>76.1%</b>	<b>1,414</b>	<b>21.7%</b>	<b>90</b>	<b>1.4%</b>	<b>53</b>	<b>0.8%</b>	<b>6,516</b>
<i>Monthly Average</i>	<i>14,203</i>	<i>15,766</i>	<i>4,307</i>	<i>27.3%</i>	<i>11,459</i>	<i>72.7%</i>	<i>4,945</i>	<i>31.4%</i>	<i>1,377</i>	<i>8.7%</i>	<i>374</i>	<i>2.4%</i>	<i>4,050</i>	<i>25.7%</i>	<i>1,758</i>	<i>11.1%</i>	<i>3,263</i>	<i>20.7%</i>	<i>4,847</i>	<i>76.7%</i>	<i>1,326</i>	<i>21.0%</i>	<i>97</i>	<i>1.5%</i>	<i>51</i>	<i>0.8%</i>	<i>6,322</i>
<b>Overall Total</b>	<b>184,641</b>		<b>55,993</b>		<b>148,971</b>		<b>64,286</b>		<b>17,901</b>		<b>4,862</b>		<b>52,649</b>		<b>22,850</b>		<b>42,416</b>		<b>63,013</b>	<b>76.7%</b>	<b>17,240</b>	<b>21.0%</b>	<b>1,262</b>	<b>1.5%</b>	<b>666</b>	<b>0.8%</b>	<b>82,181</b>

Notes: The data in this table comes from three distinct sources: (1) the ACD phone system which keeps a count of the number of calls and call routing; (2) Monthly NJSpirit Intakes which record decision making on calls received by SCR screeners, and (3) NJSpirit extracts of assigned CWS Referrals and CPS Reports.

The number of Intakes, CPS Reports, and CWS Referrals are based on an extract of NJSpirit. Data was extracted by the Office of Information Technology and Reporting on **May 9, 2014** for all Intakes, CPS Reports, and CWS Referrals received from April 1, 2014 through April 30, 2014.

(1) The number calls SCR received through the Automatic Call Distribution (ACD) System that were directed to a screener from any call-in phone number.

(2) Non-Child-Directed ACD Calls are those that are answered by screeners in SCR, but not registered in NJSpirit. These may be administrative calls, or calls related to an existing NJSpirit report in which the additional information is added to an existing electronic document, rather than being entered on a new document. Where this occurs, the results of a call cannot be counted.

(3) The statewide total number of Intakes recorded in NJSpirit, by type of Intake. There is not a one-to-one relationship between an ACD call and an Intake; multiple calls to SCR may result in a single Intake, or one call may result in multiple Intakes. NAR, RI, I&R, and IO Intakes have been entered in NJSpirit since 11/29/05.

(4) Prior to January 2009, the number of CPS Reports only included the CPS Reports assigned to an office via the Assignment Designee process. This number represents the CPS Reports that were not assigned to an office via the Assignment Designee process.

(5) Prior to January 2009, the number of CWS Referrals only included the CWS Referrals assigned to an office via the Assignment Designee process. This number represents the CWS Referrals that were not assigned to an office via the Assignment Designee process.

(6) As of January 2011, this number represents the total number of Intakes entered in NJSpirit from the number of calls received by SCR. There is not a one-to-one relationship between a call received by SCR and an Intake entered in NJSpirit; multiple calls to SCR may result in a single Intake, or one call may result in multiple Intakes.

(7) As of January 2011, the Intakes Not Linked to NJS Case/Child represents the number of calls not linked to a new or existing case in NJSpirit.

(8) As of January 2011, the Intakes Linked to NJS Case/Child represents the number of calls linked to a new or existing case in NJSpirit.

**Table 2: Type of CPS Reports and CWS Referrals Assigned to All Field Offices by Date Received**

REFERRAL DATE		Type of Assignment				Total	
		CPS Reports Assigned to Offices <sup>(1,2)</sup>	CPS Report Calls to SCR Recorded in NJ Spirit	CWS Referrals Assigned to Offices <sup>(1,2)</sup>	CWS Referral Calls to SCR Recorded in NJ Spirit	All Reports and Referrals Assigned to Offices <sup>(1,2)</sup>	CPS Report and CWS Referral Calls Recorded in NJ Spirit
2004	Jan 2004	2,405				1,588	
	Feb 2004	2,592	1,747		4,339		
	Mar 2004	3,009	2,131		5,140		
	Apr 2004	2,608	1,824		4,432		
	May 2004	3,230	1,683		4,913		
	Jun 2004	2,860	1,432		4,292		
	Jul 2004	2,549	1,253		3,802		
	Aug 2004	1,987	1,511		3,498		
	Sept 2004	2,193	1,630		3,823		
	Oct 2004	2,244	1,681		3,925		
	Nov 2004	1,851	1,510		3,361		
	Dec 2004	2,197	1,603		3,800		
	<b>Total</b>	<b>29,725</b>	<b>19,593</b>		<b>49,318</b>		
2005	Jan 2005	2,367		1,848		4,215	
	Feb 2005	2,673		1,383		4,056	
	Mar 2005	3,371	3,528	1,523	1,473	4,894	5,001
	Apr 2005	3,534	3,835	1,467	1,528	5,001	5,363
	May 2005	3,662	3,808	1,483	1,433	5,145	5,241
	Jun 2005	3,448	3,662	1,179	1,194	4,627	4,856
	Jul 2005	2,555	2,700	864	822	3,419	3,522
	Aug 2005	3,593	3,772	1,029	1,109	4,622	4,881
	Sept 2005	4,790	4,645	831	879	5,621	5,524
	Oct 2005	4,900	5,191	780	886	5,680	6,077
	Nov 2005	4,328	4,494	768	873	5,096	5,367
	Dec 2005	3,781	3,924	762	771	4,543	4,695
	<b>Total</b>	<b>43,002</b>	<b>39,559</b>	<b>13,917</b>	<b>10,968</b>	<b>56,919</b>	<b>50,527</b>
2006	Jan 2006	5,318	5,483	1,187	1,229	6,505	6,712
	Feb 2006	4,928	5,118	1,285	1,329	6,213	6,447
	Mar 2006	5,422	5,630	1,412	1,456	6,834	7,086
	Apr 2006	4,460	4,644	1,145	1,192	5,605	5,836
	May 2006	5,198	5,423	1,267	1,317	6,465	6,740
	Jun 2006	4,378	4,607	1,128	1,185	5,506	5,792
	Jul 2006	3,286	3,454	918	949	4,204	4,403
	Aug 2006	3,719	3,928	784	818	4,503	4,746
	Sep 2006	4,161	4,347	714	742	4,875	5,089
	Oct 2006	4,930	5,132	790	825	5,720	5,957
	Nov 2006	4,206	4,251	722	744	4,928	4,995
	Dec 2006	3,918	3,998	713	721	4,631	4,719
	<b>Total</b>	<b>53,924</b>	<b>56,015</b>	<b>12,065</b>	<b>12,507</b>	<b>65,989</b>	<b>68,522</b>
2007	Jan 2007	4,766	5,275	930	956	5,696	6,231
	Feb 2007	3,931	4,348	874	888	4,805	5,236
	Mar 2007	5,063	5,600	981	968	6,044	6,568
	Apr 2007	4,242	4,755	1,002	1,019	5,244	5,774
	May 2007	5,375	5,971	1,054	1,093	6,429	7,064
	Jun 2007	4,474	5,042	987	1,028	5,461	6,070
	Jul 2007	3,769	4,386	989	1,049	4,758	5,435
	Aug 2007 <sup>(3)</sup>	<i>TRANSITION</i>	4,395	<i>TRANSITION</i>	1,028	<i>TRANSITION</i>	5,423
	Sep 2007	4,017	4,846	1,187	1,096	5,204	5,942
	Oct 2007	5,088	6,125	1,084	1,234	6,172	7,359
	Nov 2007	4,021	4,911	891	1,045	4,912	5,956
	Dec 2007	3,614	4,325	846	924	4,460	5,249
	<b>Total</b>	<b>48,360</b>	<b>59,979</b>	<b>10,825</b>	<b>12,328</b>	<b>59,185</b>	<b>72,307</b>
2008	Jan 2008	4,396	5,231	887	1,046	5,283	6,277
	Feb 2008	3,889	4,664	867	994	4,756	5,658
	Mar 2008	4,121	4,891	997	1,164	5,118	6,055
	Apr 2008	4,263	5,088	1,004	1,138	5,267	6,226
	May 2008	4,213	5,083	969	1,172	5,182	6,255
	Jun 2008	4,109	4,708	871	1,044	4,980	5,752
	Jul 2008	3,557	4,113	862	1,014	4,419	5,127
	Aug 2008	3,381	3,863	924	1,054	4,305	4,917
	Sep 2008	4,370	4,986	983	1,155	5,353	6,141
	Oct 2008	4,803	5,468	961	1,140	5,764	6,608
	Nov 2008	3,785	4,340	887	1,029	4,672	5,369
	Dec 2008	4,168	4,701	958	1,133	5,126	5,834
	<b>Total</b>	<b>49,055</b>	<b>57,136</b>	<b>11,170</b>	<b>13,083</b>	<b>60,225</b>	<b>70,219</b>

The data contained in this report is considered preliminary and as a result, these figures might be different than the final reported figures. The data is produced for continuous quality improvement across DCF.

**Table 2: Type of CPS Reports and CWS Referrals Assigned to All Field Offices by Date Received**

REFERRAL DATE		Type of Assignment				Total		Reports NOT Assigned through Assignment Designee <sup>(4)(5)</sup>		
		CPS Reports Assigned to Offices <sup>(1,2)</sup>	CPS Report Calls to SCR Recorded in NJSpirit	CWS Referrals Assigned to Offices <sup>(1,2)</sup>	CWS Referral Calls to SCR Recorded in NJSpirit	All Reports and Referrals Assigned to Offices(1,2)	CPS Report and CWS Referral Calls Recorded in NJ Spirit			
2009	Jan 2009	4,548	4,740	974	1,087	5,522	5,827	181	123	5,826
	Feb 2009	4,508	4,748	874	1,017	5,382	5,765	260	127	5,769
	Mar 2009	5,456	5,679	1,007	1,166	6,463	6,845	256	131	6,850
	Apr 2009	4,858	5,021	1,012	1,134	5,870	6,155	181	109	6,160
	May 2009	5,152	5,322	990	1,139	6,142	6,461	198	123	6,463
	Jun 2009	4,693	4,823	967	1,107	5,660	5,930	161	112	5,933
	Jul 2009	3,867	4,037	812	916	4,679	4,953	189	89	4,957
	Aug 2009	3,866	4,001	839	970	4,705	4,971	165	102	4,972
	Sep 2009	4,536	4,709	924	1,049	5,460	5,758	201	98	5,759
	Oct 2009	5,112	5,279	883	980	5,995	6,259	186	80	6,261
	Nov 2009	4,382	4,546	740	826	5,122	5,372	178	76	5,376
	Dec 2009	4,435	4,560	843	922	5,278	5,482	128	78	5,484
	<b>Total</b>	<b>55,413</b>	<b>57,465</b>	<b>10,865</b>	<b>12,313</b>	<b>66,278</b>	<b>69,778</b>	<b>2,284</b>	<b>1,248</b>	<b>69,810</b>
2010	Jan 2010	5,000	5,133	882	981	5,882	6,114	154	81	6,117
	Feb 2010	4,298	4,546	713	826	5,011	5,372	148	91	5,250
	Mar 2010	6,148	6,291	1,051	1,164	7,199	7,455	166	96	7,461
	Apr 2010	5,316	5,430	961	1,073	6,277	6,503	149	79	6,505
	May 2010	5,603	5,755	1,088	1,215	6,691	6,970	194	89	6,974
	Jun 2010	5,541	5,688	1,050	1,197	6,591	6,885	193	107	6,891
	Jul 2010	4,095	4,239	929	1,043	5,024	5,282	175	88	5,287
	Aug 2010	3,966	4,094	935	1,041	4,901	5,135	144	93	5,138
	Sep 2010	4,755	4,898	924	1,032	5,679	5,930	167	88	5,934
	Oct 2010	4,916	5,080	1,038	1,161	5,954	6,241	189	98	6,241
	Nov 2010	4,683	4,822	943	1,046	5,626	5,868	159	85	5,870
	Dec 2010	4,337	4,426	825	950	5,162	5,376	135	84	5,381
	<b>Total</b>	<b>58,658</b>	<b>60,402</b>	<b>11,339</b>	<b>12,729</b>	<b>69,997</b>	<b>73,131</b>	<b>1,973</b>	<b>1,079</b>	<b>73,049</b>
2011	Jan 2011	4,474	4,594	857	968	5,331	5,562	142	85	5,558
	Feb 2011	4,532	4,634	855	977	5,387	5,611	140	84	5,611
	Mar 2011	5,568	5,661	1,039	1,188	6,607	6,849	133	109	6,849
	Apr 2011	4,523	4,634	915	1,053	5,438	5,687	159	90	5,687
	May 2011	5,203	5,328	1,095	1,248	6,298	6,576	159	112	6,569
	Jun 2011	5,109	5,268	1,200	1,350	6,309	6,618	190	115	6,614
	Jul 2011	4,029	4,159	1,011	1,157	5,040	5,316	171	97	5,308
	Aug 2011	4,023	4,120	1,070	1,222	5,093	5,342	147	96	5,336
	Sep 2011	4,706	4,833	1,142	1,296	5,848	6,129	166	111	6,125
	Oct 2011	5,170	5,283	1,035	1,174	6,205	6,457	152	97	6,454
	Nov 2011	5,081	5,198	1,192	1,322	6,273	6,520	139	104	6,516
	Dec 2011	5,234	5,325	1,072	1,212	6,306	6,537	129	101	6,536
	<b>Total</b>	<b>57,652</b>	<b>59,037</b>	<b>12,483</b>	<b>14,167</b>	<b>70,135</b>	<b>73,204</b>	<b>1,827</b>	<b>1,201</b>	<b>73,163</b>
2012	Jan 2012	5,411	5,514	1,193	1,314	6,604	6,828	119	101	6,824
	Feb 2012	5,254	5,336	1,164	1,278	6,418	6,614	104	91	6,613
	Mar 2012	5,836	5,995	1,335	1,462	7,171	7,457	149	93	7,413
	Apr 2012	4,767	4,868	1,182	1,293	5,949	6,161	132	77	6,158
	May 2012	5,736	5,829	1,306	1,429	7,042	7,258	138	79	7,259
	June 2012	4,499	4,606	1,127	1,225	5,626	5,831	141	63	5,830
	July 2012	4,144	4,226	1,036	1,129	5,180	5,355	110	65	5,355
	Aug 2012	4,212	4,285	1,078	1,175	5,290	5,460	113	57	5,460
	Sep 2012	4,646	4,729	1,157	1,237	5,803	5,966	123	39	5,965
	Oct 2012	5,042	5,132	1,148	1,253	6,190	6,385	136	59	6,385
	Nov 2012	4,213	4,299	1,075	1,150	5,288	5,449	97	63	5,448
	Dec 2012	4,305	4,358	1,069	1,152	5,374	5,510	89	47	5,510
	<b>Total</b>	<b>58,065</b>	<b>59,177</b>	<b>13,870</b>	<b>15,097</b>	<b>71,935</b>	<b>74,274</b>	<b>1,451</b>	<b>834</b>	<b>74,220</b>

The data contained in this report is considered preliminary and as a result, these figures might be different than the final reported figures. The data is produced for continuous quality improvement across DCF.

**Table 2: Type of CPS Reports and CWS Referrals Assigned to All Field Offices by Date Received**

REFERRAL DATE		Type of Assignment				Total		Reports NOT Assigned through Assignment Designee <sup>(4)(5)</sup>		
		CPS Reports Assigned to Offices <sup>(1,2)</sup>	CPS Report Calls to SCR Recorded in NJSpirit	CWS Referrals Assigned to Offices <sup>(1,2)</sup>	CWS Referral Calls to SCR Recorded in NJSpirit	All Reports and Referrals Assigned to Offices(1,2)	CPS Report and CWS Referral Calls Recorded in NJ Spirit			
2013	Jan 2013	5,379	5,444	1,240	1,319	6,619	6,763	85	56	6,760
	Feb 2013	4,863	4,938	1,139	1,207	6,002	6,145	103	38	6,143
	Mar 2013	5,236	5,319	1,244	1,345	6,480	6,664	119	65	6,664
	Apr 2013	5,334	5,389	1,357	1,444	6,691	6,833	96	45	6,832
	May 2013	5,879	5,948	1,444	1,556	7,323	7,504	114	66	7,503
	June 2013	4,842	4,915	1,179	1,263	6,021	6,178	105	51	6,177
	July 2013	4,246	4,302	1,169	1,255	5,415	5,557	84	59	5,558
	Aug 2013	4,223	4,288	1,101	1,198	5,324	5,486	107	54	5,485
	Sep 2013	4,724	4,814	1,195	1,291	5,919	6,105	127	56	6,102
	Oct 2013	5,528	5,563	1,425	1,530	6,953	7,093	86	56	7,095
	Nov 2013	4,594	4,687	1,290	1,343	5,884	6,030	100	44	6,028
	Dec 2013	4,321	4,365	1,190	1,260	5,511	5,625	76	39	5,626
	<b>Total</b>	<b>59,169</b>	<b>59,972</b>	<b>14,973</b>	<b>16,011</b>	<b>74,142</b>	<b>75,983</b>	<b>1,202</b>	<b>629</b>	<b>75,973</b>
2014	Jan 2014	5,040	5,097	1,327	1,416	6,367	6,513	98	48	6,513
	Feb 2014	4,422	4,458	1,211	1,293	5,633	5,751	77	42	5,752
	Mar 2014	5,336	5,408	1,503	1,585	6,839	6,993	102	53	6,994
	Apr 2014	5,015	5,052	1,358	1,467	6,373	6,519	90	53	6,516
	<b>Total</b>	<b>19,813</b>	<b>20,015</b>	<b>5,399</b>	<b>5,761</b>	<b>25,212</b>	<b>25,776</b>	<b>367</b>	<b>196</b>	<b>25,775</b>
<b>Grand Total</b>		<b>532,836</b>	<b>528,757</b>	<b>136,499</b>	<b>124,964</b>	<b>669,335</b>	<b>653,721</b>	<b>9,104</b>	<b>5,187</b>	<b>391,990</b>

**Source of Data:** SIS 9-7 & K8 Records and NJSpirit CPS Reports and CWS Referrals. Data for NJSpirit CPS Reports and CWS Referrals available in March 2005. NJSpirit data extracts available in September 2007.

**NOTE:** The number of CPS Reports and CWS Referrals recorded in NJSpirit may be higher than those recorded in SIS because SIS figures may exclude reports that did not cross the "virtual bridge" from NJSpirit to SIS. Additionally, 9-7's erroneously entered into SIS were corrected or deleted in SIS, but CPS Reports and CWS Referrals entered into NJSpirit cannot be corrected or deleted.

(1) A CPS Report or a CWS Referral may include multiple children in a family, with one or more allegation or request for services. In these cases, each CPS Report or CWS Referral is counted once - the CPS Report or the CWS Referral is the unit of analysis rather than the child.

(2) Includes CPS Reports and CWS Referrals with an assignment to an office via the Assignment Designee process.

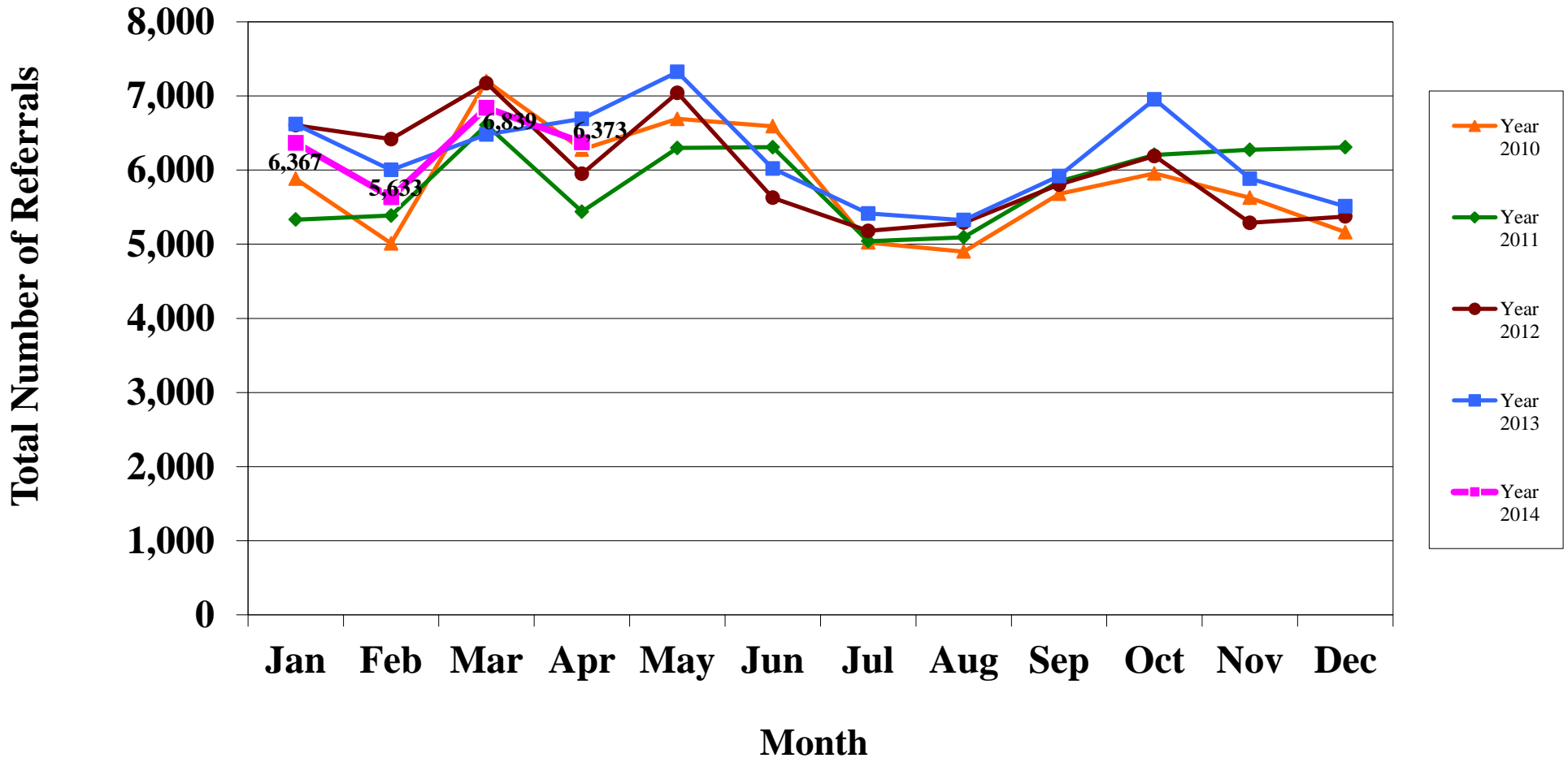
(3) NJSpirit replaced SIS during August 2007. Due to the transition between these systems, ITR could not rely on the accuracy of the August 2007 data, and it is not included in this report.

(4) Prior to January 2009, the number of CPS Reports only included the CPS Reports assigned to an office via the Assignment Designee process. This number represents the CPS Reports that were not assigned to an office via the Assignment Designee process. This data is not available prior to January 2009.

(5) Prior to January 2009, the number of CWS Referrals only included the CWS Referrals assigned to an office via the Assignment Designee process. This number represents the CWS Referrals that were not assigned to an office via the Assignment Designee process. This data is not available prior to January 2009.

The data contained in this report is considered preliminary and as a result, these figures might be different than the final reported figures. The data is produced for continuous quality improvement across DCF.

### Chart 1: CPS & CWS Referrals Assigned to All CP&P Offices



The data contained in this report is considered preliminary and as a result, these figures might be different than the final reported figures. The data is produced for continuous quality improvement across DCF.

**Table 3: Source of CPS Reports and CWS Referrals**

	<b>SOURCE</b>	<b>Apr 2013</b>	<b>May 2013</b>	<b>June 2013</b>	<b>July 2013</b>	<b>Aug 2013</b>	<b>Sep 2013</b>	<b>Oct 2013</b>	<b>Nov 2013</b>	<b>Dec 2013</b>	<b>Jan 2014</b>	<b>Feb 2014</b>	<b>Mar 2014</b>	<b>Apr 2014</b>	<b>13 Month Total</b>
<b>CWS Referrals</b>	Anonymous	115	98	91	96	67	97	98	81	101	76	77	113	<b>89</b>	1,199
		8.2%	6.6%	7.5%	8.0%	5.9%	7.9%	6.6%	6.2%	8.3%	5.6%	6.1%	7.4%	<b>6.3%</b>	7.0%
	Community Group/Individual	30	48	47	60	42	33	37	40	34	38	30	43	<b>46</b>	528
		2.1%	3.2%	3.9%	5.0%	3.7%	2.7%	2.5%	3.1%	2.8%	2.8%	2.4%	2.8%	<b>3.3%</b>	3.1%
	Correctional Facility	1	1	3	4	1	0	0	1	1	0	4	2	<b>1</b>	19
		0.1%	0.1%	0.2%	0.3%	0.1%	0.0%	0.0%	0.1%	0.1%	0.0%	0.3%	0.1%	<b>0.1%</b>	0.1%
	Court	40	33	27	32	46	38	50	24	25	30	31	39	<b>43</b>	458
		2.9%	2.2%	2.2%	2.7%	4.0%	3.1%	3.4%	1.8%	2.0%	2.2%	2.5%	2.5%	<b>3.0%</b>	2.7%
	CWA	4	2	8	8	2	1	10	5	3	8	5	5	<b>6</b>	67
		0.3%	0.1%	0.7%	0.7%	0.2%	0.1%	0.7%	0.4%	0.2%	0.6%	0.4%	0.3%	<b>0.4%</b>	0.4%
	DCP&P	101	116	86	99	85	68	77	66	66	79	79	93	<b>74</b>	1089
		7.2%	7.8%	7.1%	8.3%	7.4%	5.5%	5.2%	5.1%	5.4%	5.8%	6.3%	6.1%	<b>5.2%</b>	6.3%
	Facility Admin	1	0	0	2	6	0	4	2	1	2	2	1	<b>1</b>	22
		0.1%	0.0%	0.0%	0.2%	0.5%	0.0%	0.3%	0.2%	0.1%	0.1%	0.2%	0.1%	<b>0.1%</b>	0.1%
	Facility Staff	31	32	40	33	29	17	24	33	30	25	27	38	<b>26</b>	385
		2.2%	2.1%	3.3%	2.8%	2.5%	1.4%	1.6%	2.5%	2.5%	1.8%	2.2%	2.5%	<b>1.8%</b>	2.2%
	Friend/Neighbor	51	42	34	47	58	38	42	28	34	35	38	40	<b>38</b>	525
		3.6%	2.8%	2.8%	3.9%	5.1%	3.1%	2.8%	2.2%	2.8%	2.6%	3.0%	2.6%	<b>2.7%</b>	3.0%
	Health	208	212	154	195	191	218	209	194	164	185	175	213	<b>216</b>	2,534
		14.9%	14.2%	12.7%	16.3%	16.7%	17.7%	14.2%	14.9%	13.4%	13.5%	14.0%	13.9%	<b>15.3%</b>	14.7%
	Legal	8	5	7	18	10	12	17	10	5	3	9	16	<b>8</b>	128
		0.6%	0.3%	0.6%	1.5%	0.9%	1.0%	1.2%	0.8%	0.4%	0.2%	0.7%	1.0%	<b>0.6%</b>	0.7%
	Other Agency	118	142	144	177	163	123	176	164	137	152	146	145	<b>181</b>	1,968
		8.4%	9.5%	11.9%	14.8%	14.2%	10.0%	11.9%	12.6%	11.2%	11.1%	11.7%	9.5%	<b>12.8%</b>	11.4%
	Parent	136	146	141	157	154	157	151	133	147	139	111	134	<b>138</b>	1,844
		9.7%	9.8%	11.6%	13.1%	13.5%	12.7%	10.2%	10.2%	12.0%	10.2%	8.9%	8.7%	<b>9.8%</b>	10.7%
	Police	172	173	150	160	179	166	134	150	136	172	146	173	<b>182</b>	2,093
		12.3%	11.6%	12.4%	13.4%	15.6%	13.5%	9.1%	11.6%	11.1%	12.6%	11.7%	11.3%	<b>12.9%</b>	12.1%
Relative	51	52	62	55	65	57	64	52	66	78	50	71	<b>44</b>	767	
	3.6%	3.5%	5.1%	4.6%	5.7%	4.6%	4.3%	4.0%	5.4%	5.7%	4.0%	4.6%	<b>3.1%</b>	4.4%	
School	310	368	187	29	19	183	359	291	250	316	299	386	<b>299</b>	3,296	
	22.2%	24.7%	15.4%	2.4%	1.7%	14.8%	24.3%	22.4%	20.5%	23.1%	23.9%	25.2%	<b>21.1%</b>	19.1%	
Self	22	20	31	26	27	25	24	24	22	30	24	21	<b>22</b>	318	
	1.6%	1.3%	2.6%	2.2%	2.4%	2.0%	1.6%	1.8%	1.8%	2.2%	1.9%	1.4%	<b>1.6%</b>	1.8%	
<b>CWS Total</b>	<b>1,399</b>	<b>1,490</b>	<b>1,212</b>	<b>1,198</b>	<b>1,144</b>	<b>1,233</b>	<b>1,476</b>	<b>1,298</b>	<b>1,222</b>	<b>1,368</b>	<b>1,253</b>	<b>1,533</b>	<b>1,414</b>	<b>17,240</b>	
	<b>20.91%</b>	<b>20.35%</b>	<b>20.13%</b>	<b>22.12%</b>	<b>21.49%</b>	<b>20.83%</b>	<b>21.25%</b>	<b>22.07%</b>	<b>22.17%</b>	<b>21.49%</b>	<b>22.24%</b>	<b>22.42%</b>	<b>22.19%</b>		

The data contained in this report is considered preliminary and as a result, these figures might be different than the final reported figures. The data is produced for continuous quality improvement across DCF.



**Table 3: Source of CPS Reports and CWS Referrals**

	<b>SOURCE</b>	<b>Apr 2013</b>	<b>May 2013</b>	<b>June 2013</b>	<b>July 2013</b>	<b>Aug 2013</b>	<b>Sep 2013</b>	<b>Oct 2013</b>	<b>Nov 2013</b>	<b>Dec 2013</b>	<b>Jan 2014</b>	<b>Feb 2014</b>	<b>Mar 2014</b>	<b>Apr 2014</b>	<b>13 Month Total</b>
<b>CPS Reports</b>	Alleged Perpetrator	0	0	0	0	0	0	0	2	5	3	2	2	4	18
		0.0%	0.0%	0.0%	0.0%	0.0%	0.0%	0.0%	0.7%	1.8%	1.1%	0.8%	0.7%	1.4%	0.5%
	Anonymous	750	844	702	671	678	731	774	626	557	681	562	658	627	8,861
		14.2%	14.5%	14.6%	15.9%	16.2%	15.6%	14.2%	13.7%	13.0%	13.6%	12.8%	12.4%	12.6%	14.1%
	Clergy	3	1	2	2	5	2	5	5	1	2	0	4	0	32
		0.1%	0.0%	0.0%	0.0%	0.1%	0.0%	0.1%	0.1%	0.0%	0.0%	0.0%	0.1%	0.0%	0.1%
	Community Agency Staff	216	222	183	209	195	169	193	170	147	202	190	198	222	2,516
		4.1%	3.8%	3.8%	5.0%	4.7%	3.6%	3.5%	3.7%	3.4%	4.0%	4.3%	3.7%	4.5%	4.0%
	Correctional Fac	2	1	4	4	4	1	6	4	3	3	5	2	3	42
		0.0%	0.0%	0.1%	0.1%	0.1%	0.0%	0.1%	0.1%	0.1%	0.1%	0.1%	0.0%	0.1%	0.1%
	Court Personnel	68	59	82	75	78	66	81	49	78	69	69	89	90	953
		1.1%	1.1%	1.1%	1.1%	1.1%	1.1%	1.1%	1.1%	1.1%	1.1%	1.1%	1.1%	1.1%	1.5%
	Daycare/Babysitter	18	16	21	20	20	10	20	16	18	10	8	16	14	207
		0.3%	0.3%	0.4%	0.5%	0.5%	0.2%	0.4%	0.3%	0.4%	0.2%	0.2%	0.3%	0.3%	0.3%
	Facility Staff	64	54	63	62	50	48	61	39	36	48	53	52	43	673
		1.2%	0.9%	1.3%	1.5%	1.2%	1.0%	1.1%	0.9%	0.8%	1.0%	1.2%	1.0%	0.9%	1.1%
	Friend/Neighbor	187	228	226	229	239	217	196	139	123	179	130	161	218	2,472
		3.5%	3.9%	4.7%	5.4%	5.7%	4.6%	3.6%	3.0%	2.9%	3.6%	3.0%	3.0%	4.4%	3.9%
	Law Enforcement	710	788	771	769	774	731	691	686	611	650	602	713	662	9,158
		13.4%	13.5%	16.0%	18.2%	18.5%	15.6%	12.6%	15.0%	14.2%	13.0%	13.7%	13.4%	13.3%	14.5%
	Medical/Health Staff	373	397	379	397	391	337	381	352	334	387	320	382	415	4,845
		7.0%	6.8%	7.9%	9.4%	9.4%	7.2%	7.0%	7.7%	7.8%	7.7%	7.3%	7.2%	8.4%	7.7%
	Mental Health Staff	274	306	225	228	229	208	267	197	189	263	195	248	232	3,061
		5.2%	5.2%	4.7%	5.4%	5.5%	4.4%	4.9%	4.3%	4.4%	5.3%	4.5%	4.7%	4.7%	4.9%
	Other	277	300	303	376	358	320	316	275	302	267	263	312	299	3,968
		5.2%	5.1%	6.3%	8.9%	8.6%	6.8%	5.8%	6.0%	7.0%	5.3%	6.0%	5.9%	6.0%	6.3%
	Parent	433	466	451	459	506	429	405	385	410	415	359	382	381	5,481
		8.2%	8.0%	9.4%	10.9%	12.1%	9.2%	7.4%	8.4%	9.6%	8.3%	8.2%	7.2%	7.7%	8.7%
Relative	217	237	227	252	254	248	236	190	211	190	184	173	219	2,838	
	4.1%	4.1%	4.7%	6.0%	6.1%	5.3%	4.3%	4.1%	4.9%	3.8%	4.2%	3.3%	4.4%	4.5%	
Resource Home Provider	0	0	0	0	0	0	8	3	7	3	2	1	5	29	
	0.0%	0.0%	0.0%	0.0%	0.0%	0.0%	2.5%	1.1%	2.6%	1.1%	0.8%	0.3%	1.7%	0.8%	
School Staff	1,367	1,561	865	122	49	874	1,484	1,152	964	1,342	1,176	1,600	1,212	13,768	
	25.8%	26.8%	18.0%	2.9%	1.2%	18.7%	27.1%	25.1%	22.5%	26.8%	26.8%	30.2%	24.4%	21.9%	
Self	22	15	24	22	23	26	27	25	22	16	14	19	25	280	
	0.4%	0.3%	0.5%	0.5%	0.6%	0.6%	0.5%	0.5%	0.5%	0.3%	0.3%	0.4%	0.5%	0.4%	
State Agency	311	338	281	320	327	269	326	271	271	269	246	294	288	3,811	
	5.9%	5.8%	5.8%	7.6%	7.8%	5.7%	6.0%	5.9%	6.3%	5.4%	5.6%	5.5%	5.8%	6.1%	
	<b>CPS Total</b>	<b>5,292</b>	<b>5,833</b>	<b>4,809</b>	<b>4,217</b>	<b>4,180</b>	<b>4,686</b>	<b>5,469</b>	<b>4,584</b>	<b>4,289</b>	<b>4,999</b>	<b>4,380</b>	<b>5,306</b>	<b>4,959</b>	<b>62,966</b>
		<b>79.09%</b>	<b>79.65%</b>	<b>79.87%</b>	<b>77.88%</b>	<b>78.51%</b>	<b>79.17%</b>	<b>78.75%</b>	<b>77.93%</b>	<b>77.83%</b>	<b>78.51%</b>	<b>77.76%</b>	<b>77.58%</b>	<b>77.81%</b>	
<b>Total of CWS and CPS<sup>(1)</sup></b>		<b>6,691</b>	<b>7,323</b>	<b>6,021</b>	<b>5,415</b>	<b>5,324</b>	<b>5,919</b>	<b>6,945</b>	<b>5,882</b>	<b>5,511</b>	<b>6,367</b>	<b>5,633</b>	<b>6,839</b>	<b>6,373</b>	<b>80,206</b>

<sup>(1)</sup> Source data is reflected as a count and percentage of the total number of reports received during each month.

The data contained in this report is considered preliminary and as a result, these figures might be different than the final reported figures. The data is produced for continuous quality improvement across DCF.

**Table 4: Monthly Count of CPS Reports and CWS Referrals Assigned to Local Offices**  
**-- NJSpirit Data --**

Assigned Local Office	Referral Month												Total for the Last 12 Months	Median # of Referrals Past 12 Months	Average # of Assignments the Last 12 Months	Mar 14 to Apr 14 Numerical Difference	Mar 14 to Apr 14 Percent Difference	
	Apr 2013	May 2013	Jun 2013	Jul 2013	Aug 2013	Sep 2013	Oct 2013	Nov 2013	Dec 2013	Jan 2014	Feb 2014	Mar 2014						Apr 2014
Atlantic East	157	157	136	129	119	137	174	137	119	149	129	152	145	1,683	137	140	-7	-4.6%
Atlantic West	127	118	99	102	80	127	106	86	99	107	104	115	97	1,240	103	103	-18	-15.7%
Bergen Central	143	168	159	89	111	126	182	148	119	153	122	162	154	1,693	151	141	-8	-4.9%
Bergen South	220	219	225	151	164	170	203	196	195	206	185	180	180	2,274	190	190	0	0.0%
Burlington East	166	172	147	135	121	145	188	120	120	149	131	168	142	1,738	144	145	-26	-15.5%
Burlington West	157	186	130	156	148	136	174	136	113	169	147	174	170	1,839	152	153	-4	-2.3%
Camden Central	163	190	131	121	147	157	141	137	138	147	138	123	164	1,734	140	145	41	33.3%
Camden East	147	181	139	115	163	130	137	130	136	121	114	142	146	1,654	137	138	4	2.8%
Camden North	125	139	108	129	123	117	142	112	121	116	125	121	146	1,499	122	125	25	20.7%
Camden South	118	129	99	91	109	118	133	106	99	99	87	109	91	1,270	103	106	-18	-16.5%
Cape May	112	88	85	109	99	93	94	61	82	89	84	74	87	1,045	88	87	13	17.6%
Cumberland East	78	101	66	68	78	78	83	65	68	61	72	61	72	873	70	73	11	18.0%
Cumberland West	137	194	135	130	120	127	179	145	115	136	142	147	150	1,720	139	143	3	2.0%
Essex Central	134	131	124	126	99	110	147	116	123	130	112	137	119	1,474	124	123	-18	-13.1%
Essex North	79	100	90	67	75	78	113	88	68	87	64	104	86	1,020	87	85	-18	-17.3%
Essex South	114	116	85	84	78	96	95	109	70	87	77	112	92	1,101	90	92	-20	-17.9%
Newark Center City	119	140	122	103	112	115	113	119	90	99	106	132	105	1,356	113	113	-27	-20.5%
Newark Northeast	153	147	99	102	117	130	118	112	95	128	86	119	111	1,364	115	114	-8	-6.7%
Newark South	135	140	128	114	123	127	121	108	125	119	118	158	150	1,531	124	128	-8	-5.1%
Newark Adoption Office	1	3	3	0	3	1	5	1	3	1	0	0	1	21	1	2	1	0.0%
Gloucester East	146	134	121	112	120	141	125	108	100	126	114	129	109	1,439	121	120	-20	-15.5%
Gloucester West	132	163	120	119	146	155	136	140	113	133	144	137	125	1,631	137	136	-12	-8.8%
Hudson Central	118	104	96	94	90	108	109	106	82	103	98	100	102	1,192	101	99	2	2.0%
Hudson North	121	130	114	81	86	90	134	108	123	142	103	130	105	1,346	111	112	-25	-19.2%
Hudson South	124	139	125	127	119	105	136	109	106	132	105	156	116	1,475	122	123	-40	-25.6%
Hudson West	103	130	105	84	89	104	127	118	118	116	93	151	114	1,349	115	112	-37	-24.5%
Hunterdon	67	66	53	50	32	36	64	44	43	65	51	68	50	622	51	52	-18	-26.5%
Mercer North	130	142	109	113	94	111	124	117	108	124	126	132	121	1,421	119	118	-11	-8.3%
Mercer South	131	159	123	94	131	124	129	120	107	127	102	164	158	1,538	126	128	-6	-3.7%
Middlesex Central	119	131	104	63	79	97	128	96	86	104	90	108	100	1,186	99	99	-8	-7.4%
Middlesex Coastal	170	190	151	136	136	175	187	134	131	163	118	208	169	1,898	157	158	-39	-18.8%
Middlesex West	196	181	161	103	104	148	188	165	149	187	158	183	169	1,896	163	158	-14	-7.7%
Monmouth North	223	235	197	161	161	174	211	208	201	183	187	234	223	2,375	199	198	-11	-4.7%
Monmouth South	161	191	166	160	136	155	175	146	136	190	170	195	156	1,976	163	165	-39	-20.0%
Morris West	142	139	130	104	106	123	134	124	123	136	134	123	135	1,511	127	126	12	9.8%
Morris East	105	110	85	84	63	84	97	82	83	106	75	101	102	1,072	85	89	1	1.0%
Ocean North	184	242	190	162	145	177	235	183	156	191	165	172	179	2,197	178	183	7	4.1%
Ocean South	242	238	236	223	194	203	213	202	184	241	185	257	190	2,566	208	214	-67	-26.1%
Passaic Central	195	233	192	173	155	170	251	198	186	206	196	271	234	2,465	197	205	-37	-13.7%
Passaic North	220	237	198	181	165	193	216	183	202	188	132	200	238	2,333	196	194	38	19.0%
Salem	80	97	83	82	84	84	97	74	72	85	76	77	79	990	83	83	2	2.6%
Somerset	153	195	140	137	106	160	190	148	132	174	159	196	171	1,908	160	159	-25	-12.8%
Sussex	120	128	102	120	78	88	102	110	73	115	86	88	106	1,196	102	100	18	20.5%
Union Central	96	118	76	70	63	74	118	96	95	87	100	113	112	1,122	96	94	-1	-0.9%
Union East	118	128	102	82	79	103	128	116	120	139	97	132	144	1,370	118	114	12	9.1%
Union West	113	114	89	50	64	81	114	83	87	103	106	92	91	1,074	90	90	-1	-1.1%
Warren	101	106	93	89	96	94	105	85	96	95	106	111	103	1,179	96	98	-8	-7.2%
<b>Local Office Total</b>	<b>6,395</b>	<b>6,999</b>	<b>5,771</b>	<b>5,175</b>	<b>5,110</b>	<b>5,675</b>	<b>6,621</b>	<b>5,635</b>	<b>5,310</b>	<b>6,114</b>	<b>5,419</b>	<b>6,518</b>	<b>6,109</b>	<b>70,456</b>	<b>5723</b>	<b>5,871</b>	<b>-409</b>	<b>-6.3%</b>
<b>Monthly Percentage Difference</b>	<b>N/A</b>	<b>9.4%</b>	<b>-17.5%</b>	<b>-10.3%</b>	<b>-1.3%</b>	<b>11.1%</b>	<b>16.7%</b>	<b>-14.9%</b>	<b>-5.8%</b>	<b>15.1%</b>	<b>-11.4%</b>	<b>20.3%</b>	<b>-6.3%</b>					

The data contained in this report is considered preliminary and as a result, these figures might be different than the final reported figures. The data is produced for continuous quality improvement across DCF.

**Table 4: Monthly Count of CPS Reports and CWS Referrals Assigned to Local Offices  
-- NJSpirit Data --**

Assigned Local Office	Referral Month													Total for the Last 12 Months	Median # of Referrals Past 12 Months	Average # of Assignments the Last 12 Months	Mar 14 to Apr 14 Numerical Difference	Mar 14 to Apr 14 Percent Difference
	Apr 2013	May 2013	Jun 2013	Jul 2013	Aug 2013	Sep 2013	Oct 2013	Nov 2013	Dec 2013	Jan 2014	Feb 2014	Mar 2014	Apr 2014					
Central Region IAIU	68	74	55	66	61	57	80	61	35	63	54	60	60	726	61	61	0	0.0%
Metro Region IAIU	67	59	59	37	38	50	59	49	47	42	44	91	63	638	50	53	-28	-30.8%
Northern Region IAIU	66	87	61	61	46	68	83	67	63	77	66	88	60	827	67	69	-28	-31.8%
Southern Region IAIU	87	103	75	74	69	65	108	70	54	69	50	78	79	894	72	75	1	1.3%
<b>IAIU Subtotals</b>	<b>288</b>	<b>323</b>	<b>250</b>	<b>238</b>	<b>214</b>	<b>240</b>	<b>330</b>	<b>247</b>	<b>199</b>	<b>251</b>	<b>214</b>	<b>317</b>	<b>262</b>	<b>3,085</b>	<b>249</b>	<b>257</b>	<b>-55</b>	<b>-17.4%</b>
Unable to Determine <sup>(1)</sup>	141	180	156	143	161	183	142	144	115	146	119	155	143	1,787	145	149	-12	-7.7%
Other Offices	8	1	0	2	0	4	2	2	2	2	0	4	2	21	2	2	-2	
<b>Grand Total</b>	<b>6,832</b>	<b>7,503</b>	<b>6,177</b>	<b>5,558</b>	<b>5,485</b>	<b>6,102</b>	<b>7,095</b>	<b>6,028</b>	<b>5,626</b>	<b>6,513</b>	<b>5,752</b>	<b>6,994</b>	<b>6,516</b>	<b>75,349</b>	<b>6,140</b>	<b>6,279</b>	<b>-478</b>	
<i>Monthly Percentage Difference</i>	N/A	9.8%	-17.7%	-10.0%	-1.3%	11.2%	16.3%	-15.0%	-6.7%	15.8%	-11.7%	21.6%	-6.8%					

<sup>(1)</sup>CPS Reports or CWS Referrals not assigned to an office through the Assignment Designee, but were assigned to an office for an assessment or investigation.

**Table 5: Monthly Count of CPS Reports and CWS Referrals Assigned to Counties**  
**-- NJSpirit Data --**

County														Average # of Assignments the Last 12 Months	Mar 14 to Apr 14 Numerical Difference	Mar 14 to Apr 14 Percent Difference
	Apr 2013	May 2013	June 2013	July 2013	Aug 2013	Sep 2013	Oct 2013	Nov 2013	Dec 2013	Jan 2014	Feb 2014	Mar 2014	Apr 2014			
Atlantic	284	275	235	231	199	264	280	223	218	256	233	267	242	244	-25	-9.4%
Bergen	363	387	384	240	275	296	385	344	314	359	307	342	334	331	-8	-2.3%
Burlington	323	358	277	291	269	281	362	256	233	318	278	342	312	298	-30	-8.8%
Camden	553	639	477	456	542	522	553	485	494	483	464	495	547	513	52	10.5%
Cape May	112	88	85	109	99	93	94	61	82	89	84	74	87	87	13	17.6%
Cumberland	215	295	201	198	198	205	262	210	183	197	214	208	222	216	14	6.7%
Essex	735	777	651	596	607	657	712	653	574	651	563	762	664	656	-98	-12.9%
Gloucester	278	297	241	231	266	296	261	248	213	259	258	266	234	256	-32	-12.0%
Hudson	466	503	440	386	384	407	506	441	429	493	399	537	437	447	-100	-18.6%
Hunterdon	67	66	53	50	32	36	64	44	43	65	51	68	50	52	-18	-26.5%
Mercer	261	301	232	207	225	235	253	237	215	251	228	296	279	247	-17	-5.7%
Middlesex	485	502	416	302	319	420	503	395	366	454	366	499	438	415	-61	-12.2%
Monmouth	384	426	363	321	297	329	386	354	337	373	357	429	379	363	-50	-11.7%
Morris	247	249	215	188	169	207	231	206	206	242	209	224	237	215	13	5.8%
Ocean	426	480	426	385	339	380	448	385	340	432	350	429	369	397	-60	-14.0%
Passaic	415	470	390	354	320	363	467	381	388	394	328	471	472	400	1	0.2%
Salem	80	97	83	82	84	84	97	74	72	85	76	77	79	83	2	2.6%
Somerset	153	195	140	137	106	160	190	148	132	174	159	196	171	159	-25	-12.8%
Sussex	120	128	102	120	78	88	102	110	73	115	86	88	106	100	18	20.5%
Union	327	360	267	202	206	258	360	295	302	329	303	337	347	297	10	3.0%
Warren	101	106	93	89	96	94	105	85	96	95	106	111	103	98	-8	-7.2%
<b>County Subtotals</b>	<b>6,395</b>	<b>6,999</b>	<b>5,771</b>	<b>5,175</b>	<b>5,110</b>	<b>5,675</b>	<b>6,621</b>	<b>5,635</b>	<b>5,310</b>	<b>6,114</b>	<b>5,419</b>	<b>6,518</b>	<b>6,109</b>	<b>5,871</b>	<b>-409</b>	<b>-6.3%</b>
<b>Monthly Percentage Difference</b>	<b>N/A</b>	<b>9.4%</b>	<b>-17.5%</b>	<b>-10.3%</b>	<b>-1.3%</b>	<b>11.1%</b>	<b>16.7%</b>	<b>-14.9%</b>	<b>-5.8%</b>	<b>15.1%</b>	<b>-11.4%</b>	<b>20.3%</b>	<b>-6.3%</b>			
Central Region IAIU	68	74	55	66	61	57	80	61	35	63	54	60	60	61	0	0.0%
Metro Region IAIU	67	59	59	37	38	50	59	49	47	42	44	91	63	53	-28	-30.8%
Northern Region IAIU	66	87	61	61	46	68	83	67	63	77	66	88	60	69	-28	-31.8%
Southern Region IAIU	87	103	75	74	69	65	108	70	54	69	50	78	79	75	1	1.3%
<b>IAIU Subtotals</b>	<b>288</b>	<b>323</b>	<b>250</b>	<b>238</b>	<b>214</b>	<b>240</b>	<b>330</b>	<b>247</b>	<b>199</b>	<b>251</b>	<b>214</b>	<b>317</b>	<b>262</b>	<b>257</b>	<b>-55</b>	<b>-17.4%</b>
<b>Unable to Determine<sup>(1)</sup></b>	<b>141</b>	<b>180</b>	<b>156</b>	<b>143</b>	<b>161</b>	<b>183</b>	<b>142</b>	<b>144</b>	<b>115</b>	<b>146</b>	<b>119</b>	<b>155</b>	<b>143</b>	<b>149</b>	<b>-12</b>	<b>-7.7%</b>
<b>Other Offices</b>	<b>8</b>	<b>1</b>	<b>0</b>	<b>2</b>	<b>0</b>	<b>4</b>	<b>2</b>	<b>2</b>	<b>2</b>	<b>2</b>	<b>0</b>	<b>4</b>	<b>2</b>	<b>2</b>		
<b>Grand Total</b>	<b>6,832</b>	<b>7,503</b>	<b>6,177</b>	<b>5,558</b>	<b>5,485</b>	<b>6,102</b>	<b>7,095</b>	<b>6,028</b>	<b>5,626</b>	<b>6,513</b>	<b>5,752</b>	<b>6,994</b>	<b>6,516</b>	<b>6,279</b>	<b>-478</b>	<b>-6.8%</b>
<b>Monthly Percentage Difference</b>	<b>N/A</b>	<b>9.8%</b>	<b>-9.6%</b>	<b>-25.9%</b>	<b>-11.2%</b>	<b>9.8%</b>	<b>29.4%</b>	<b>-1.2%</b>	<b>-20.7%</b>	<b>8.0%</b>	<b>2.2%</b>	<b>7.4%</b>	<b>13.3%</b>			

<sup>(1)</sup>CPS Reports or CWS Referrals not assigned to an office through the Assignment Designee, but were assigned to an office for an assessment or investigation.

**Greatest One Month County Decrease (Numeric and/or Percent)**

**Greatest One Month County Increase (Numeric and/or Percent)**

The data contained in this report is considered preliminary and as a result, these figures might be different than the final reported figures. The data is produced for continuous quality improvement across DCF.

Table 6: Monthly Count of CPS Reports and CWS Referrals Assigned to Counties  
-- NJSpirit Data --

County	Local Office	Type of Referral	Referral Month												Total	
			Apr 2013	May 2013	Jun 2013	Jul 2013	Aug 2013	Sep 2013	Oct 2013	Nov 2013	Dec 2013	Jan 2014	Feb 2014	Mar 2014		Apr 2014
ATLANTIC	Atlantic East	CPS	128	135	113	91	106	112	142	107	94	118	93	116	117	1,472
		CWS	29	22	23	38	13	25	32	30	25	31	36	36	28	368
		<b>Total</b>	<b>157</b>	<b>157</b>	<b>136</b>	<b>129</b>	<b>119</b>	<b>137</b>	<b>174</b>	<b>137</b>	<b>119</b>	<b>149</b>	<b>129</b>	<b>152</b>	<b>145</b>	<b>1,840</b>
	Atlantic West	CPS	91	89	73	81	65	112	82	75	76	80	84	94	75	1,077
		CWS	36	29	26	21	15	15	24	11	23	27	20	21	22	290
		<b>Total</b>	<b>127</b>	<b>118</b>	<b>99</b>	<b>102</b>	<b>80</b>	<b>127</b>	<b>106</b>	<b>86</b>	<b>99</b>	<b>107</b>	<b>104</b>	<b>115</b>	<b>97</b>	<b>1,367</b>
	County Total	CPS	219	224	186	172	171	224	224	182	170	198	177	210	192	2,549
		<b>Total</b>	<b>284</b>	<b>275</b>	<b>235</b>	<b>231</b>	<b>199</b>	<b>264</b>	<b>280</b>	<b>223</b>	<b>218</b>	<b>256</b>	<b>233</b>	<b>267</b>	<b>242</b>	<b>3,207</b>
	BERGEN	Bergen Central	CPS	111	136	112	72	79	104	127	115	90	114	97	127	115
CWS			32	32	47	17	32	22	55	33	29	39	25	35	39	437
<b>Total</b>			<b>143</b>	<b>168</b>	<b>159</b>	<b>89</b>	<b>111</b>	<b>126</b>	<b>182</b>	<b>148</b>	<b>119</b>	<b>153</b>	<b>122</b>	<b>162</b>	<b>154</b>	<b>1,836</b>
Bergen South		CPS	164	179	183	117	126	125	158	149	149	162	137	145	136	1,930
		CWS	56	40	42	34	38	45	45	47	46	44	48	35	44	564
		<b>Total</b>	<b>220</b>	<b>219</b>	<b>225</b>	<b>151</b>	<b>164</b>	<b>170</b>	<b>203</b>	<b>196</b>	<b>195</b>	<b>206</b>	<b>185</b>	<b>180</b>	<b>180</b>	<b>2,494</b>
County Total		CPS	275	315	295	189	205	229	285	264	239	276	234	272	251	3,329
		<b>Total</b>	<b>363</b>	<b>387</b>	<b>384</b>	<b>240</b>	<b>275</b>	<b>296</b>	<b>385</b>	<b>344</b>	<b>314</b>	<b>359</b>	<b>307</b>	<b>342</b>	<b>334</b>	<b>4,330</b>
BURLINGTON		Burlington East	CPS	126	138	120	105	93	115	150	99	89	120	104	128	119
	CWS		40	34	27	30	28	30	38	21	31	29	27	40	23	398
	<b>Total</b>		<b>166</b>	<b>172</b>	<b>147</b>	<b>135</b>	<b>121</b>	<b>145</b>	<b>188</b>	<b>120</b>	<b>120</b>	<b>149</b>	<b>131</b>	<b>168</b>	<b>142</b>	<b>1,904</b>
	Burlington West	CPS	130	153	116	124	113	98	142	113	83	139	108	139	133	1,591
		CWS	27	33	14	32	35	38	32	23	30	30	39	35	37	405
		<b>Total</b>	<b>157</b>	<b>186</b>	<b>130</b>	<b>156</b>	<b>148</b>	<b>136</b>	<b>174</b>	<b>136</b>	<b>113</b>	<b>169</b>	<b>147</b>	<b>174</b>	<b>170</b>	<b>1,996</b>
	County Total	CPS	256	291	236	229	206	213	292	212	172	259	212	267	252	3,097
		<b>Total</b>	<b>323</b>	<b>358</b>	<b>277</b>	<b>291</b>	<b>269</b>	<b>281</b>	<b>362</b>	<b>256</b>	<b>233</b>	<b>318</b>	<b>278</b>	<b>342</b>	<b>312</b>	<b>3,900</b>
	CAMDEN	Camden Central	CPS	138	163	101	99	108	128	112	99	107	119	115	100	127
CWS			25	27	30	22	39	29	29	38	31	28	23	23	37	381
<b>Total</b>			<b>163</b>	<b>190</b>	<b>131</b>	<b>121</b>	<b>147</b>	<b>157</b>	<b>141</b>	<b>137</b>	<b>138</b>	<b>147</b>	<b>138</b>	<b>123</b>	<b>164</b>	<b>1,897</b>
Camden East		CPS	110	143	110	89	133	96	109	101	100	96	85	97	112	1,381
		CWS	37	38	29	26	30	34	28	29	36	25	29	45	34	420
		<b>Total</b>	<b>147</b>	<b>181</b>	<b>139</b>	<b>115</b>	<b>163</b>	<b>130</b>	<b>137</b>	<b>130</b>	<b>136</b>	<b>121</b>	<b>114</b>	<b>142</b>	<b>146</b>	<b>1,801</b>
Camden North		CPS	99	99	82	104	91	91	107	86	93	94	95	94	107	1,242
		CWS	26	40	26	25	32	26	35	26	28	22	30	27	39	382
		<b>Total</b>	<b>125</b>	<b>139</b>	<b>108</b>	<b>129</b>	<b>123</b>	<b>117</b>	<b>142</b>	<b>112</b>	<b>121</b>	<b>116</b>	<b>125</b>	<b>121</b>	<b>146</b>	<b>1,624</b>
Camden South		CPS	97	104	86	73	93	101	100	84	80	82	63	77	75	1,115
		CWS	21	25	13	18	16	17	33	22	19	17	24	32	16	273
		<b>Total</b>	<b>118</b>	<b>129</b>	<b>99</b>	<b>91</b>	<b>109</b>	<b>118</b>	<b>133</b>	<b>106</b>	<b>99</b>	<b>99</b>	<b>87</b>	<b>109</b>	<b>91</b>	<b>1,388</b>
County Total	CPS	444	509	379	365	425	416	428	370	380	391	358	368	421	5,254	
	<b>Total</b>	<b>553</b>	<b>639</b>	<b>477</b>	<b>456</b>	<b>542</b>	<b>522</b>	<b>553</b>	<b>485</b>	<b>494</b>	<b>483</b>	<b>464</b>	<b>495</b>	<b>547</b>	<b>6,710</b>	
CAPE MAY	Cape May	CPS	99	70	60	82	79	77	73	46	61	67	61	57	69	901
		CWS	13	18	25	27	20	16	21	15	21	22	23	17	18	256
		<b>Total</b>	<b>112</b>	<b>88</b>	<b>85</b>	<b>109</b>	<b>99</b>	<b>93</b>	<b>94</b>	<b>61</b>	<b>82</b>	<b>89</b>	<b>84</b>	<b>74</b>	<b>87</b>	<b>1,157</b>
	County Total	CPS	99	70	60	82	79	77	73	46	61	67	61	57	69	901
		<b>Total</b>	<b>112</b>	<b>88</b>	<b>85</b>	<b>109</b>	<b>99</b>	<b>93</b>	<b>94</b>	<b>61</b>	<b>82</b>	<b>89</b>	<b>84</b>	<b>74</b>	<b>87</b>	<b>1,157</b>
CUMBERLAND	Cumberland East	CPS	69	88	54	57	63	55	61	49	59	45	60	48	51	759
		CWS	9	13	12	11	15	23	22	16	9	16	12	13	21	192
		<b>Total</b>	<b>78</b>	<b>101</b>	<b>66</b>	<b>68</b>	<b>78</b>	<b>78</b>	<b>83</b>	<b>65</b>	<b>68</b>	<b>61</b>	<b>72</b>	<b>61</b>	<b>72</b>	<b>951</b>
	Cumberland West	CPS	115	151	109	107	98	96	146	107	93	107	109	112	120	1,470
		CWS	22	43	26	23	22	31	33	38	22	29	33	35	30	387
		<b>Total</b>	<b>137</b>	<b>194</b>	<b>135</b>	<b>130</b>	<b>120</b>	<b>127</b>	<b>179</b>	<b>145</b>	<b>115</b>	<b>136</b>	<b>142</b>	<b>147</b>	<b>150</b>	<b>1,857</b>
	County Total	CPS	184	239	163	164	161	151	207	156	152	152	169	160	171	2,229
<b>Total</b>		<b>215</b>	<b>295</b>	<b>201</b>	<b>198</b>	<b>198</b>	<b>205</b>	<b>262</b>	<b>210</b>	<b>183</b>	<b>197</b>	<b>214</b>	<b>208</b>	<b>222</b>	<b>2,808</b>	

The data contained in this report is considered preliminary and as a result, these figures might be different than the final reported figures. The data is produced for continuous quality improvement across DCF.

Table 6: Monthly Count of CPS Reports and CWS Referrals Assigned to Counties  
 -- NJSpirit Data --

County	Local Office	Type of Referral	Referral Month												Total	
			Apr 2013	May 2013	Jun 2013	Jul 2013	Aug 2013	Sep 2013	Oct 2013	Nov 2013	Dec 2013	Jan 2014	Feb 2014	Mar 2014		Apr 2014
ESSEX	Essex Central	CPS	98	98	94	93	76	78	111	76	93	89	85	101	93	1,185
		CWS	36	33	30	33	23	32	36	40	30	41	27	36	26	423
		<b>Total</b>	<b>134</b>	<b>131</b>	<b>124</b>	<b>126</b>	<b>99</b>	<b>110</b>	<b>147</b>	<b>116</b>	<b>123</b>	<b>130</b>	<b>112</b>	<b>137</b>	<b>119</b>	<b>1,608</b>
	Essex North	CPS	59	83	78	51	61	61	85	68	54	68	50	88	68	874
		CWS	20	17	12	16	14	17	28	20	14	19	14	16	18	225
		<b>Total</b>	<b>79</b>	<b>100</b>	<b>90</b>	<b>67</b>	<b>75</b>	<b>78</b>	<b>113</b>	<b>88</b>	<b>68</b>	<b>87</b>	<b>64</b>	<b>104</b>	<b>86</b>	<b>1,099</b>
	Essex South	CPS	81	91	67	58	51	66	79	68	48	64	63	80	64	880
		CWS	33	25	18	26	27	30	16	41	22	23	14	32	28	335
		<b>Total</b>	<b>114</b>	<b>116</b>	<b>85</b>	<b>84</b>	<b>78</b>	<b>96</b>	<b>95</b>	<b>109</b>	<b>70</b>	<b>87</b>	<b>77</b>	<b>112</b>	<b>92</b>	<b>1,215</b>
	Newark Center City	CPS	100	97	82	79	91	88	84	93	68	81	83	104	79	1,129
		CWS	19	43	40	24	21	27	29	26	22	18	23	28	26	346
		<b>Total</b>	<b>119</b>	<b>140</b>	<b>122</b>	<b>103</b>	<b>112</b>	<b>115</b>	<b>113</b>	<b>119</b>	<b>90</b>	<b>99</b>	<b>106</b>	<b>132</b>	<b>105</b>	<b>1,475</b>
	Newark Northeast	CPS	117	108	75	77	91	103	96	84	81	101	63	90	77	1,163
		CWS	36	39	24	25	26	27	22	28	14	27	23	29	34	354
		<b>Total</b>	<b>153</b>	<b>147</b>	<b>99</b>	<b>102</b>	<b>117</b>	<b>130</b>	<b>118</b>	<b>112</b>	<b>95</b>	<b>128</b>	<b>86</b>	<b>119</b>	<b>111</b>	<b>1,517</b>
	Newark South	CPS	91	105	100	90	102	102	102	68	97	93	88	99	114	1,251
		CWS	44	35	28	24	21	25	19	40	28	26	30	59	36	415
		<b>Total</b>	<b>135</b>	<b>140</b>	<b>128</b>	<b>114</b>	<b>123</b>	<b>127</b>	<b>121</b>	<b>108</b>	<b>125</b>	<b>119</b>	<b>118</b>	<b>158</b>	<b>150</b>	<b>1,666</b>
	Newark Adoption Office	CPS	0	0	1	0	0	0	4	0	0	1	0	0	1	7
CWS		1	3	2	0	3	1	1	1	3	0	0	0	0	15	
<b>Total</b>		<b>1</b>	<b>3</b>	<b>3</b>	<b>0</b>	<b>3</b>	<b>1</b>	<b>5</b>	<b>1</b>	<b>3</b>	<b>1</b>	<b>0</b>	<b>0</b>	<b>1</b>	<b>22</b>	
County Total	CPS	546	582	497	448	472	498	561	457	441	497	432	562	496	6,489	
	CWS	189	195	154	148	135	159	151	196	133	154	131	200	168	2,113	
	<b>Total</b>	<b>735</b>	<b>777</b>	<b>651</b>	<b>596</b>	<b>607</b>	<b>657</b>	<b>712</b>	<b>653</b>	<b>574</b>	<b>651</b>	<b>563</b>	<b>762</b>	<b>664</b>	<b>8,602</b>	
GLOUCESTER	Gloucester East	CPS	120	114	97	90	93	113	98	90	74	95	95	97	82	1,258
		CWS	26	20	24	22	27	28	27	18	26	31	19	32	27	327
		<b>Total</b>	<b>146</b>	<b>134</b>	<b>121</b>	<b>112</b>	<b>120</b>	<b>141</b>	<b>125</b>	<b>108</b>	<b>100</b>	<b>126</b>	<b>114</b>	<b>129</b>	<b>109</b>	<b>1,585</b>
	Gloucester West	CPS	104	129	105	97	119	111	109	109	92	108	110	112	107	1,412
		CWS	28	34	15	22	27	44	27	31	21	25	34	25	18	351
		<b>Total</b>	<b>132</b>	<b>163</b>	<b>120</b>	<b>119</b>	<b>146</b>	<b>155</b>	<b>136</b>	<b>140</b>	<b>113</b>	<b>133</b>	<b>144</b>	<b>137</b>	<b>125</b>	<b>1,763</b>
	County Total	CPS	224	243	202	187	212	224	207	199	166	203	205	209	189	2,670
CWS		54	54	39	44	54	72	54	49	47	56	53	57	45	678	
<b>Total</b>		<b>278</b>	<b>297</b>	<b>241</b>	<b>231</b>	<b>266</b>	<b>296</b>	<b>261</b>	<b>248</b>	<b>213</b>	<b>259</b>	<b>258</b>	<b>266</b>	<b>234</b>	<b>3,348</b>	
HUDSON	Hudson Central	CPS	79	80	71	63	60	80	80	76	59	85	75	79	80	967
		CWS	39	24	25	31	30	28	29	30	23	18	23	21	22	343
		<b>Total</b>	<b>118</b>	<b>104</b>	<b>96</b>	<b>94</b>	<b>90</b>	<b>108</b>	<b>109</b>	<b>106</b>	<b>82</b>	<b>103</b>	<b>98</b>	<b>100</b>	<b>102</b>	<b>1,310</b>
	Hudson North	CPS	96	104	92	63	59	74	96	89	103	109	85	105	86	1,161
		CWS	25	26	22	18	27	16	38	19	20	33	18	25	19	306
		<b>Total</b>	<b>121</b>	<b>130</b>	<b>114</b>	<b>81</b>	<b>86</b>	<b>90</b>	<b>134</b>	<b>108</b>	<b>123</b>	<b>142</b>	<b>103</b>	<b>130</b>	<b>105</b>	<b>1,467</b>
	Hudson South	CPS	91	115	86	88	93	85	112	76	89	104	80	112	83	1,214
		CWS	33	24	39	39	26	20	24	33	17	28	25	44	33	385
		<b>Total</b>	<b>124</b>	<b>139</b>	<b>125</b>	<b>127</b>	<b>119</b>	<b>105</b>	<b>136</b>	<b>109</b>	<b>106</b>	<b>132</b>	<b>105</b>	<b>156</b>	<b>116</b>	<b>1,599</b>
	Hudson West	CPS	77	110	88	71	67	74	102	97	79	85	67	113	90	1,120
		CWS	26	20	17	13	22	30	25	21	39	31	26	38	24	332
<b>Total</b>		<b>103</b>	<b>130</b>	<b>105</b>	<b>84</b>	<b>89</b>	<b>104</b>	<b>127</b>	<b>118</b>	<b>118</b>	<b>116</b>	<b>93</b>	<b>151</b>	<b>114</b>	<b>1,452</b>	
County Total	CPS	343	409	337	285	279	313	390	338	330	383	307	409	339	4,462	
	CWS	123	94	103	101	105	94	116	103	99	110	92	128	98	1,366	
	<b>Total</b>	<b>466</b>	<b>503</b>	<b>440</b>	<b>386</b>	<b>384</b>	<b>407</b>	<b>506</b>	<b>441</b>	<b>429</b>	<b>493</b>	<b>399</b>	<b>537</b>	<b>437</b>	<b>5,828</b>	
HUNTERDON	Hunterdon	CPS	51	52	40	43	20	21	51	31	35	47	38	55	39	523
		CWS	16	14	13	7	12	15	13	13	8	18	13	13	11	166
		<b>Total</b>	<b>67</b>	<b>66</b>	<b>53</b>	<b>50</b>	<b>32</b>	<b>36</b>	<b>64</b>	<b>44</b>	<b>43</b>	<b>65</b>	<b>51</b>	<b>68</b>	<b>50</b>	<b>689</b>
	County Total	CPS	51	52	40	43	20	21	51	31	35	47	38	55	39	523
		CWS	16	14	13	7	12	15	13	13	8	18	13	13	11	166
<b>Total</b>	<b>67</b>	<b>66</b>	<b>53</b>	<b>50</b>	<b>32</b>	<b>36</b>	<b>64</b>	<b>44</b>	<b>43</b>	<b>65</b>	<b>51</b>	<b>68</b>	<b>50</b>	<b>689</b>		
MERCER	Mercer North	CPS	99	117	81	85	69	94	106	84	80	97	101	109	93	1,215
		CWS	31	25	28	28	25	17	18	33	28	27	25	23	28	336
		<b>Total</b>	<b>130</b>	<b>142</b>	<b>109</b>	<b>113</b>	<b>94</b>	<b>111</b>	<b>124</b>	<b>117</b>	<b>108</b>	<b>124</b>	<b>126</b>	<b>132</b>	<b>121</b>	<b>1,551</b>
	Mercer South	CPS	109	121	98	75	108	99	110	91	90	107	83	127	123	1,341
		CWS	22	38	25	19	23	25	19	29	17	20	19	37	35	328
		<b>Total</b>	<b>131</b>	<b>159</b>	<b>123</b>	<b>94</b>	<b>131</b>	<b>124</b>	<b>129</b>	<b>120</b>	<b>107</b>	<b>127</b>	<b>102</b>	<b>164</b>	<b>158</b>	<b>1,669</b>
	County Total	CPS	208	238	179	160	177	193	216	175	170	204	184	236	216	2,556
CWS		53	63	53	47	48	42	37	62	45	47	44	60	63	664	
<b>Total</b>		<b>261</b>	<b>301</b>	<b>232</b>	<b>207</b>	<b>225</b>	<b>235</b>	<b>253</b>	<b>237</b>	<b>215</b>	<b>251</b>	<b>228</b>	<b>296</b>	<b>279</b>	<b>3,220</b>	

The data contained in this report is considered preliminary and as a result, these figures might be different than the final reported figures. The data is produced for continuous quality improvement across DCF.

Table 6: Monthly Count of CPS Reports and CWS Referrals Assigned to Counties  
 -- NJSpirit Data --

County	Local Office	Type of Referral	Referral Month												Total	
			Apr 2013	May 2013	Jun 2013	Jul 2013	Aug 2013	Sep 2013	Oct 2013	Nov 2013	Dec 2013	Jan 2014	Feb 2014	Mar 2014		Apr 2014
MIDDLESEX	Middlesex Central	CPS	94	107	86	38	64	80	100	74	73	82	71	87	78	1,034
		CWS	25	24	18	25	15	17	28	22	13	22	19	21	22	271
		<b>Total</b>	<b>119</b>	<b>131</b>	<b>104</b>	<b>63</b>	<b>79</b>	<b>97</b>	<b>128</b>	<b>96</b>	<b>86</b>	<b>104</b>	<b>90</b>	<b>108</b>	<b>100</b>	<b>1,305</b>
	Middlesex Coastal	CPS	141	147	126	103	107	149	145	112	96	131	97	171	135	1,660
		CWS	29	43	25	33	29	26	42	22	35	32	21	37	34	408
		<b>Total</b>	<b>170</b>	<b>190</b>	<b>151</b>	<b>136</b>	<b>136</b>	<b>175</b>	<b>187</b>	<b>134</b>	<b>131</b>	<b>163</b>	<b>118</b>	<b>208</b>	<b>169</b>	<b>2,068</b>
	Middlesex West	CPS	166	143	131	86	82	120	150	127	107	153	124	143	136	1,668
		CWS	30	38	30	17	22	28	38	38	42	34	34	40	33	424
		<b>Total</b>	<b>196</b>	<b>181</b>	<b>161</b>	<b>103</b>	<b>104</b>	<b>148</b>	<b>188</b>	<b>165</b>	<b>149</b>	<b>187</b>	<b>158</b>	<b>183</b>	<b>169</b>	<b>2,092</b>
	County Total	CPS	401	397	343	227	253	349	395	313	276	366	292	401	349	4,362
CWS		84	105	73	75	66	71	108	82	90	88	74	98	89	1,103	
<b>Total</b>		<b>485</b>	<b>502</b>	<b>416</b>	<b>302</b>	<b>319</b>	<b>420</b>	<b>503</b>	<b>395</b>	<b>366</b>	<b>454</b>	<b>366</b>	<b>499</b>	<b>438</b>	<b>5,465</b>	
MONMOUTH	Monmouth North	CPS	193	180	157	128	132	141	179	167	151	147	147	183	166	2,071
		CWS	30	55	40	33	29	33	32	41	50	36	40	51	57	527
		<b>Total</b>	<b>223</b>	<b>235</b>	<b>197</b>	<b>161</b>	<b>161</b>	<b>174</b>	<b>211</b>	<b>208</b>	<b>201</b>	<b>183</b>	<b>187</b>	<b>234</b>	<b>223</b>	<b>2,598</b>
	Monmouth South	CPS	122	160	131	128	103	129	138	112	104	144	136	150	117	1,674
		CWS	39	31	35	32	33	26	37	34	32	46	34	45	39	463
		<b>Total</b>	<b>161</b>	<b>191</b>	<b>166</b>	<b>160</b>	<b>136</b>	<b>155</b>	<b>175</b>	<b>146</b>	<b>136</b>	<b>190</b>	<b>170</b>	<b>195</b>	<b>156</b>	<b>2,137</b>
	County Total	CPS	315	340	288	256	235	270	317	279	255	291	283	333	283	3,745
		CWS	69	86	75	65	62	59	69	75	82	82	74	96	96	990
		<b>Total</b>	<b>384</b>	<b>426</b>	<b>363</b>	<b>321</b>	<b>297</b>	<b>329</b>	<b>386</b>	<b>354</b>	<b>337</b>	<b>373</b>	<b>357</b>	<b>429</b>	<b>379</b>	<b>4,735</b>
	MORRIS	Morris West	CPS	110	110	97	76	73	88	103	101	94	110	108	97	102
CWS			32	29	33	28	33	35	31	23	29	26	26	26	33	384
<b>Total</b>			<b>142</b>	<b>139</b>	<b>130</b>	<b>104</b>	<b>106</b>	<b>123</b>	<b>134</b>	<b>124</b>	<b>123</b>	<b>136</b>	<b>134</b>	<b>123</b>	<b>135</b>	<b>1,653</b>
Morris East		CPS	86	84	60	63	52	65	81	62	64	76	49	77	85	904
		CWS	19	26	25	21	11	19	16	20	19	30	26	24	17	273
		<b>Total</b>	<b>105</b>	<b>110</b>	<b>85</b>	<b>84</b>	<b>63</b>	<b>84</b>	<b>97</b>	<b>82</b>	<b>83</b>	<b>106</b>	<b>75</b>	<b>101</b>	<b>102</b>	<b>1,177</b>
County Total		CPS	196	194	157	139	125	153	184	163	158	186	157	174	187	2,173
		CWS	51	55	58	49	44	54	47	43	48	56	52	50	50	657
		<b>Total</b>	<b>247</b>	<b>249</b>	<b>215</b>	<b>188</b>	<b>169</b>	<b>207</b>	<b>231</b>	<b>206</b>	<b>206</b>	<b>242</b>	<b>209</b>	<b>224</b>	<b>237</b>	<b>2,830</b>
OCEAN		Ocean North	CPS	149	193	151	131	123	147	179	149	127	146	134	128	149
	CWS		35	49	39	31	22	30	56	34	29	45	31	44	30	475
	<b>Total</b>		<b>184</b>	<b>242</b>	<b>190</b>	<b>162</b>	<b>145</b>	<b>177</b>	<b>235</b>	<b>183</b>	<b>156</b>	<b>191</b>	<b>165</b>	<b>172</b>	<b>179</b>	<b>2,381</b>
	Ocean South	CPS	201	180	203	160	154	173	176	159	150	198	145	207	155	2,261
		CWS	41	58	33	63	40	30	37	43	34	43	40	50	35	547
		<b>Total</b>	<b>242</b>	<b>238</b>	<b>236</b>	<b>223</b>	<b>194</b>	<b>203</b>	<b>213</b>	<b>202</b>	<b>184</b>	<b>241</b>	<b>185</b>	<b>257</b>	<b>190</b>	<b>2,808</b>
	County Total	CPS	350	373	354	291	277	320	355	308	277	344	279	335	304	4,167
		CWS	76	107	72	94	62	60	93	77	63	88	71	94	65	1,022
		<b>Total</b>	<b>426</b>	<b>480</b>	<b>426</b>	<b>385</b>	<b>339</b>	<b>380</b>	<b>448</b>	<b>385</b>	<b>340</b>	<b>432</b>	<b>350</b>	<b>429</b>	<b>369</b>	<b>5,189</b>
	PASSAIC	Passaic Central	CPS	152	181	158	144	128	131	194	161	139	165	152	200	184
CWS			43	52	34	29	27	39	57	37	47	41	44	71	50	571
<b>Total</b>			<b>195</b>	<b>233</b>	<b>192</b>	<b>173</b>	<b>155</b>	<b>170</b>	<b>251</b>	<b>198</b>	<b>186</b>	<b>206</b>	<b>196</b>	<b>271</b>	<b>234</b>	<b>2,660</b>
Passaic North		CPS	167	185	160	136	130	151	160	137	162	136	104	159	176	1,963
		CWS	53	52	38	45	35	42	56	46	40	52	28	41	62	590
		<b>Total</b>	<b>220</b>	<b>237</b>	<b>198</b>	<b>181</b>	<b>165</b>	<b>193</b>	<b>216</b>	<b>183</b>	<b>202</b>	<b>188</b>	<b>132</b>	<b>200</b>	<b>238</b>	<b>2,553</b>
County Total		CPS	319	366	318	280	258	282	354	298	301	301	256	359	360	4,052
		CWS	96	104	72	74	62	81	113	83	87	93	72	112	112	1,161
		<b>Total</b>	<b>415</b>	<b>470</b>	<b>390</b>	<b>354</b>	<b>320</b>	<b>363</b>	<b>467</b>	<b>381</b>	<b>388</b>	<b>394</b>	<b>328</b>	<b>471</b>	<b>472</b>	<b>5,213</b>
SALEM		Salem	CPS	60	78	67	63	65	67	80	52	58	66	59	56	67
	CWS		20	19	16	19	19	17	17	22	14	19	17	21	12	232
	<b>Total</b>		<b>80</b>	<b>97</b>	<b>83</b>	<b>82</b>	<b>84</b>	<b>84</b>	<b>97</b>	<b>74</b>	<b>72</b>	<b>85</b>	<b>76</b>	<b>77</b>	<b>79</b>	<b>1,070</b>
	County Total	CPS	60	78	67	63	65	67	80	52	58	66	59	56	67	838
		CWS	20	19	16	19	19	17	17	22	14	19	17	21	12	232
		<b>Total</b>	<b>80</b>	<b>97</b>	<b>83</b>	<b>82</b>	<b>84</b>	<b>84</b>	<b>97</b>	<b>74</b>	<b>72</b>	<b>85</b>	<b>76</b>	<b>77</b>	<b>79</b>	<b>1,070</b>
SOMERSET	Somerset	CPS	124	165	113	114	86	133	140	122	103	142	125	161	133	1,661
		CWS	29	30	27	23	20	27	50	26	29	32	34	35	38	400
		<b>Total</b>	<b>153</b>	<b>195</b>	<b>140</b>	<b>137</b>	<b>106</b>	<b>160</b>	<b>190</b>	<b>148</b>	<b>132</b>	<b>174</b>	<b>159</b>	<b>196</b>	<b>171</b>	<b>2,061</b>
	County Total	CPS	124	165	113	114	86	133	140	122	103	142	125	161	133	1,661
		CWS	29	30	27	23	20	27	50	26	29	32	34	35	38	400
		<b>Total</b>	<b>153</b>	<b>195</b>	<b>140</b>	<b>137</b>	<b>106</b>	<b>160</b>	<b>190</b>	<b>148</b>	<b>132</b>	<b>174</b>	<b>159</b>	<b>196</b>	<b>171</b>	<b>2,061</b>
SUSSEX	Sussex	CPS	88	113	79	89	62	73	80	82	58	86	71	69	87	1,037
		CWS	32	15	23	31	16	15	22	28	15	29	15	19	19	279
		<b>Total</b>	<b>120</b>	<b>128</b>	<b>102</b>	<b>120</b>	<b>78</b>	<b>88</b>	<b>102</b>	<b>110</b>	<b>73</b>	<b>115</b>	<b>86</b>	<b>88</b>	<b>106</b>	<b>1,316</b>
	County Total	CPS	88	113	79	89	62	73	80	82	58	86	71	69	87	1,037
		CWS	32	15	23	31	16	15	22	28	15	29	15	19	19	279
		<b>Total</b>	<b>120</b>	<b>128</b>	<b>102</b>	<b>120</b>	<b>78</b>	<b>88</b>	<b>102</b>	<b>110</b>	<b>73</b>	<b>115</b>	<b>86</b>	<b>88</b>	<b>106</b>	<b>1,316</b>

The data contained in this report is considered preliminary and as a result, these figures might be different than the final reported figures. The data is produced for continuous quality improvement across DCF.

Table 6: Monthly Count of CPS Reports and CWS Referrals Assigned to Counties  
 -- NJSpirit Data --

County	Local Office	Type of Referral	Referral Month												Total	
			Apr 2013	May 2013	Jun 2013	Jul 2013	Aug 2013	Sep 2013	Oct 2013	Nov 2013	Dec 2013	Jan 2014	Feb 2014	Mar 2014		Apr 2014
UNION	Union Central	CPS	73	84	59	53	46	56	91	76	75	69	73	79	93	927
		CWS	23	34	17	17	17	18	27	20	20	18	27	34	19	291
		<b>Total</b>	<b>96</b>	<b>118</b>	<b>76</b>	<b>70</b>	<b>63</b>	<b>74</b>	<b>118</b>	<b>96</b>	<b>95</b>	<b>87</b>	<b>100</b>	<b>113</b>	<b>112</b>	<b>1,218</b>
	Union East	CPS	98	100	87	69	64	82	100	87	96	109	77	103	110	1,182
		CWS	20	28	15	13	15	21	28	29	24	30	20	29	34	306
		<b>Total</b>	<b>118</b>	<b>128</b>	<b>102</b>	<b>82</b>	<b>79</b>	<b>103</b>	<b>128</b>	<b>116</b>	<b>120</b>	<b>139</b>	<b>97</b>	<b>132</b>	<b>144</b>	<b>1,488</b>
	Union West	CPS	89	91	73	32	54	65	88	67	70	80	77	59	67	912
		CWS	24	23	16	18	10	16	26	16	17	23	29	33	24	275
		<b>Total</b>	<b>113</b>	<b>114</b>	<b>89</b>	<b>50</b>	<b>64</b>	<b>81</b>	<b>114</b>	<b>83</b>	<b>87</b>	<b>103</b>	<b>106</b>	<b>92</b>	<b>91</b>	<b>1,187</b>
	County Total	CPS	260	275	219	154	164	203	279	230	241	258	227	241	270	3,021
CWS		67	85	48	48	42	55	81	65	61	71	76	96	77	872	
<b>Total</b>		<b>327</b>	<b>360</b>	<b>267</b>	<b>202</b>	<b>206</b>	<b>258</b>	<b>360</b>	<b>295</b>	<b>302</b>	<b>329</b>	<b>303</b>	<b>337</b>	<b>347</b>	<b>3,893</b>	
WARREN	Warren	CPS	76	82	80	69	77	71	78	70	77	70	82	81	76	989
		CWS	25	24	13	20	19	23	27	15	19	25	24	30	27	291
		<b>Total</b>	<b>101</b>	<b>106</b>	<b>93</b>	<b>89</b>	<b>96</b>	<b>94</b>	<b>105</b>	<b>85</b>	<b>96</b>	<b>95</b>	<b>106</b>	<b>111</b>	<b>103</b>	<b>1,280</b>
	County Total	CPS	76	82	80	69	77	71	78	70	77	70	82	81	76	989
		<b>Total</b>	<b>101</b>	<b>106</b>	<b>93</b>	<b>89</b>	<b>96</b>	<b>94</b>	<b>105</b>	<b>85</b>	<b>96</b>	<b>95</b>	<b>106</b>	<b>111</b>	<b>103</b>	<b>1,280</b>
<b>County CPS Referral Total</b>		<b>CPS</b>	<b>5,038</b>	<b>5,555</b>	<b>4,592</b>	<b>4,006</b>	<b>4,009</b>	<b>4,480</b>	<b>5,196</b>	<b>4,347</b>	<b>4,120</b>	<b>4,787</b>	<b>4,208</b>	<b>5,015</b>	<b>4,751</b>	<b>60,104</b>
<b>County CWS Referral Total</b>		<b>CWS</b>	<b>1,357</b>	<b>1,444</b>	<b>1,179</b>	<b>1,169</b>	<b>1,101</b>	<b>1,195</b>	<b>1,425</b>	<b>1,288</b>	<b>1,190</b>	<b>1,327</b>	<b>1,211</b>	<b>1,503</b>	<b>1,358</b>	<b>16,747</b>
<b>County Referral Total</b>		<b>Total</b>	<b>6,395</b>	<b>6,999</b>	<b>5,771</b>	<b>5,175</b>	<b>5,110</b>	<b>5,675</b>	<b>6,621</b>	<b>5,635</b>	<b>5,310</b>	<b>6,114</b>	<b>5,419</b>	<b>6,518</b>	<b>6,109</b>	<b>76,851</b>
Central Region IAIU		CPS	68	74	55	66	61	57	80	61	35	63	54	60	60	794
		CWS	0	0	0	0	0	0	0	0	0	0	0	0	0	0
		<b>Total</b>	<b>68</b>	<b>74</b>	<b>55</b>	<b>66</b>	<b>61</b>	<b>57</b>	<b>80</b>	<b>61</b>	<b>35</b>	<b>63</b>	<b>54</b>	<b>60</b>	<b>60</b>	<b>794</b>
Metro Region IAIU		CPS	67	59	59	37	38	50	59	49	47	42	44	91	63	705
		CWS	0	0	0	0	0	0	0	0	0	0	0	0	0	0
		<b>Total</b>	<b>67</b>	<b>59</b>	<b>59</b>	<b>37</b>	<b>38</b>	<b>50</b>	<b>59</b>	<b>49</b>	<b>47</b>	<b>42</b>	<b>44</b>	<b>91</b>	<b>63</b>	<b>705</b>
Northern Region IAIU		CPS	66	87	61	61	46	68	83	65	63	77	66	88	60	891
		CWS	0	0	0	0	0	0	0	2	0	0	0	0	0	2
		<b>Total</b>	<b>66</b>	<b>87</b>	<b>61</b>	<b>61</b>	<b>46</b>	<b>68</b>	<b>83</b>	<b>67</b>	<b>63</b>	<b>77</b>	<b>66</b>	<b>88</b>	<b>60</b>	<b>893</b>
Southern Region IAIU		CPS	87	103	75	74	69	65	108	70	54	69	50	78	79	981
		CWS	0	0	0	0	0	0	0	0	0	0	0	0	0	0
		<b>Total</b>	<b>87</b>	<b>103</b>	<b>75</b>	<b>74</b>	<b>69</b>	<b>65</b>	<b>108</b>	<b>70</b>	<b>54</b>	<b>69</b>	<b>50</b>	<b>78</b>	<b>79</b>	<b>981</b>
<b>IAIU CPS Subtotal</b>		<b>CPS</b>	<b>288</b>	<b>323</b>	<b>250</b>	<b>238</b>	<b>214</b>	<b>240</b>	<b>330</b>	<b>245</b>	<b>199</b>	<b>251</b>	<b>214</b>	<b>317</b>	<b>262</b>	<b>3,371</b>
<b>IAIU CWS Subtotal</b>		<b>CWS</b>	<b>0</b>	<b>0</b>	<b>0</b>	<b>0</b>	<b>0</b>	<b>0</b>	<b>0</b>	<b>2</b>	<b>0</b>	<b>0</b>	<b>0</b>	<b>0</b>	<b>2</b>	
<b>IAIU Subtotal</b>		<b>Total</b>	<b>288</b>	<b>323</b>	<b>250</b>	<b>238</b>	<b>214</b>	<b>240</b>	<b>330</b>	<b>247</b>	<b>199</b>	<b>251</b>	<b>214</b>	<b>317</b>	<b>262</b>	<b>3,373</b>
<b>County and IAIU CPS Subtotal</b>		<b>CPS</b>	<b>5,326</b>	<b>5,878</b>	<b>4,842</b>	<b>4,244</b>	<b>4,223</b>	<b>4,720</b>	<b>5,526</b>	<b>4,592</b>	<b>4,319</b>	<b>5,038</b>	<b>4,422</b>	<b>5,332</b>	<b>5,013</b>	<b>63,475</b>
<b>County and IAIU CWS Subtotal</b>		<b>CWS</b>	<b>1,357</b>	<b>1,444</b>	<b>1,179</b>	<b>1,169</b>	<b>1,101</b>	<b>1,195</b>	<b>1,425</b>	<b>1,290</b>	<b>1,190</b>	<b>1,327</b>	<b>1,211</b>	<b>1,503</b>	<b>1,358</b>	<b>16,749</b>
<b>Unable to Determine<sup>(1)</sup></b>		<b>Total</b>	<b>141</b>	<b>180</b>	<b>156</b>	<b>143</b>	<b>161</b>	<b>183</b>	<b>142</b>	<b>144</b>	<b>115</b>	<b>146</b>	<b>119</b>	<b>155</b>	<b>143</b>	<b>1,928</b>
<b>Other Offices</b>		<b>Total</b>	<b>8</b>	<b>1</b>	<b>0</b>	<b>2</b>	<b>0</b>	<b>4</b>	<b>2</b>	<b>2</b>	<b>2</b>	<b>0</b>	<b>4</b>	<b>2</b>	<b>29</b>	
<b>Grand Total</b>		<b>Total</b>	<b>6,832</b>	<b>7,503</b>	<b>6,177</b>	<b>5,558</b>	<b>5,485</b>	<b>6,102</b>	<b>7,095</b>	<b>6,028</b>	<b>5,626</b>	<b>6,513</b>	<b>5,752</b>	<b>6,994</b>	<b>6,516</b>	<b>82,181</b>

<sup>(1)</sup>CPS Reports or CWS Referrals not assigned to an office through the Assignment Designee, but were assigned to an office for an assessment or investigation.