



## **Monthly Screening and Investigation Report May 2014**

Allison Blake, Ph.D., L.S.W.  
Commissioner

June 20, 2014



## Table of Contents

Table 1: NJ State Central Registry Activity: Monthly Child Abuse and Neglect Hotline Calls, Intakes and Assignments to CP&P Offices

---

Table 2: Assignments to CP&P Offices: CPS Reports and CWS Referrals

---

Chart 1: CP&P Annual Trends in CPS Reports and CWS Referrals

---

Table 3: Source of CPS Reports and CWS Referrals

---

Table 4: Monthly Count of CPS Reports and CWS Referrals Assigned to Counties

---

Table 5: Monthly Count of CPS Reports and CWS Referrals Assigned to CP&P Local Offices

---

**Table 1: NJ State Central Registry Activity: Monthly Child Abuse and Neglect Hotline Calls, Intakes and Assignments to CP&P Offices<sup>1,2,6</sup>**

2013 - 2014	Hotline Call Activity		Intakes Recorded in NJ SPIRIT <sup>5,7</sup>												Assignments to CP&P Offices				
	Total Calls <sup>3</sup>	Resulting Intakes <sup>4</sup>	CPS Reports		CWS Referrals		No Action Required (NAR)		Related Information (RI)		Information & Referral (I&R)		Information Only (IO)		CPS Reports		CWS Referrals		Total Assignments
			n	%	n	%	n	%	n	%	n	%	n	%	n	%	n	%	
May 2013	16,376	18,133	5,948	32.8%	1,556	8.6%	402	2.2%	4,625	25.5%	1,946	10.7%	3,656	20.2%	5,947	79.3%	1,556	20.7%	7,503
June 2013	14,230	15,609	4,915	31.5%	1,263	8.1%	348	2.2%	4,133	26.5%	1,681	10.8%	3,269	20.9%	4,914	79.6%	1,263	20.4%	6,177
July 2013	12,870	14,377	4,302	29.9%	1,255	8.7%	375	2.6%	3,703	25.8%	1,591	11.1%	3,151	21.9%	4,301	77.4%	1,257	22.6%	5,558
August 2013	12,375	14,994	4,288	28.6%	1,198	8.0%	377	2.5%	3,934	26.2%	2,133	14.2%	3,064	20.4%	4,287	78.2%	1,198	21.8%	5,485
September 2013	14,201	15,762	4,814	30.5%	1,291	8.2%	395	2.5%	4,059	25.8%	1,957	12.4%	3,246	20.6%	4,813	78.9%	1,289	21.1%	6,102
October 2013	15,671	17,315	5,563	32.1%	1,530	8.8%	483	2.8%	4,308	24.9%	1,999	11.5%	3,432	19.8%	5,563	78.4%	1,532	21.6%	7,095
November 2013	13,950	15,260	4,687	30.7%	1,343	8.8%	261	1.7%	4,277	28.0%	1,586	10.4%	3,106	20.4%	4,686	77.7%	1,342	22.3%	6,028
December 2013	12,568	13,962	4,365	31.3%	1,260	9.0%	391	2.8%	3,445	24.7%	1,554	11.1%	2,947	21.1%	4,365	77.6%	1,261	22.4%	5,626
January 2014	15,091	16,412	5,097	31.1%	1,416	8.6%	346	2.1%	4,233	25.8%	1,728	10.5%	3,592	21.9%	5,097	78.3%	1,416	21.7%	6,513
February 2014	13,092	14,377	4,458	31.0%	1,293	9.0%	306	2.1%	3,838	26.7%	1,395	9.7%	3,087	21.5%	4,457	77.5%	1,295	22.5%	5,752
March 2014	15,236	16,707	5,408	32.4%	1,585	9.5%	363	2.2%	4,257	25.5%	1,774	10.6%	3,320	19.9%	5,408	77.3%	1,586	22.7%	6,994
April 2014	14,056	15,642	5,052	32.3%	1,467	9.4%	400	2.6%	3,846	24.6%	1,676	10.7%	3,201	20.5%	5,049	77.5%	1,467	22.5%	6,516
<b>May 2014</b>	<b>15,690</b>	<b>17,101</b>	<b>5,501</b>	<b>32.2%</b>	<b>1,635</b>	<b>9.6%</b>	<b>396</b>	<b>2.3%</b>	<b>4,444</b>	<b>26.0%</b>	<b>1,816</b>	<b>10.6%</b>	<b>3,309</b>	<b>19.3%</b>	<b>5,501</b>	<b>77.1%</b>	<b>1,635</b>	<b>22.9%</b>	<b>7,136</b>
<i>Monthly Average</i>	<i>14,262</i>	<i>15,819</i>	<i>4,954</i>	<i>31.3%</i>	<i>1,392</i>	<i>8.8%</i>	<i>373</i>	<i>2.4%</i>	<i>4,085</i>	<i>25.8%</i>	<i>1,757</i>	<i>11.1%</i>	<i>3,260</i>	<i>20.6%</i>	<i>4,953</i>	<i>78.1%</i>	<i>1,392</i>	<i>21.9%</i>	<i>6,345</i>
<b>Overall Total</b>	<b>185,406</b>		<b>64,398</b>		<b>18,092</b>		<b>4,843</b>		<b>53,102</b>		<b>22,836</b>		<b>42,380</b>		<b>64,388</b>	<b>78.1%</b>	<b>18,097</b>	<b>21.9%</b>	<b>82,485</b>

<sup>1</sup>The data in this table comes from three distinct sources: (1) the ACD phone system which keeps a count of the number of calls and call routing; (2) Monthly NJ Spirit Intakes which record decision making on calls received by hotline screeners, and (3) NJ Spirit extracts of assigned CWS Referrals and CPS Reports.

<sup>2</sup>The number of Intakes, CPS Reports, and CWS Referrals are based on an extract from NJ Spirit. The data extracted by the Office of Research, Evaluation, and Reporting on **June 9, 2014** includes all Intakes, CPS Reports, and CWS Referrals received from May 1, 2014 through May 31, 2014.

<sup>3</sup>The number calls received through the Automatic Call Distribution (ACD) System that were directed to a screener from any call-in phone number.

<sup>4</sup>The number of Intakes entered in NJ Spirit from the number of calls received.

<sup>5</sup>The number of Intakes recorded in NJ Spirit, by type of Intake. There is not a one-to-one relationship between an ACD call and an Intake; multiple calls to SCR may result in a single Intake, or one call may result in multiple Intakes.

<sup>6</sup>Intake: The process of documenting: a report of alleged abuse or neglect of a child (CPS); a request for services on behalf of a child, or a referral of a child for services (CWS); a call in which the caller provides additional or clarifying information about a current service case or active investigation (RI); informing a caller of, or referring a caller to, services available from other private or public sources (I&R); a call that requires no action by CP&P (NAR); or a response to a simple inquiry (IO).

<sup>7</sup>NJ SPIRIT: NJ Statewide Protection Investigation and Reporting Information Tool case management system

**Table 2: Assignments to CP&P Offices: CPS Reports and CWS Referrals<sup>1</sup>**

Intake Date		CPS Reports <sup>2,3</sup>	CWS Referrals <sup>2,3</sup>	Total Assignments <sup>2,3</sup>
2010	Jan 2010	5,154	963	6,117
	Feb 2010	4,446	804	5,250
	Mar 2010	6,314	1,147	7,461
	Apr 2010	5,465	1,040	6,505
	May 2010	5,797	1,177	6,974
	Jun 2010	5,734	1,157	6,891
	Jul 2010	4,270	1,017	5,287
	Aug 2010	4,110	1,028	5,138
	Sep 2010	4,922	1,012	5,934
	Oct 2010	5,105	1,136	6,241
	Nov 2010	4,842	1,028	5,870
	Dec 2010	4,472	909	5,381
	<b>Total</b>	<b>60,631</b>	<b>12,418</b>	<b>73,049</b>
2011	Jan 2011	4,616	942	5,558
	Feb 2011	4,672	939	5,611
	Mar 2011	5,701	1,148	6,849
	Apr 2011	4,682	1,005	5,687
	May 2011	5,362	1,207	6,569
	Jun 2011	5,299	1,315	6,614
	Jul 2011	4,200	1,108	5,308
	Aug 2011	4,170	1,166	5,336
	Sep 2011	4,872	1,253	6,125
	Oct 2011	5,322	1,132	6,454
	Nov 2011	5,220	1,296	6,516
	Dec 2011	5,363	1,173	6,536
	<b>Total</b>	<b>59,479</b>	<b>13,684</b>	<b>73,163</b>
2012	Jan 2012	5,530	1,294	6,824
	Feb 2012	5,358	1,255	6,613
	Mar 2012	5,985	1,428	7,413
	Apr 2012	4,899	1,259	6,158
	May 2012	5,874	1,385	7,259
	June 2012	4,640	1,190	5,830
	July 2012	4,254	1,101	5,355
	Aug 2012	4,325	1,135	5,460
	Sep 2012	4,769	1,196	5,965
	Oct 2012	5,178	1,207	6,385
	Nov 2012	4,310	1,138	5,448
	Dec 2012	4,394	1,116	5,510
	<b>Total</b>	<b>59,516</b>	<b>14,704</b>	<b>74,220</b>

**Table 2: Assignments to CP&P Offices: CPS Reports and CWS Referrals<sup>1</sup>**

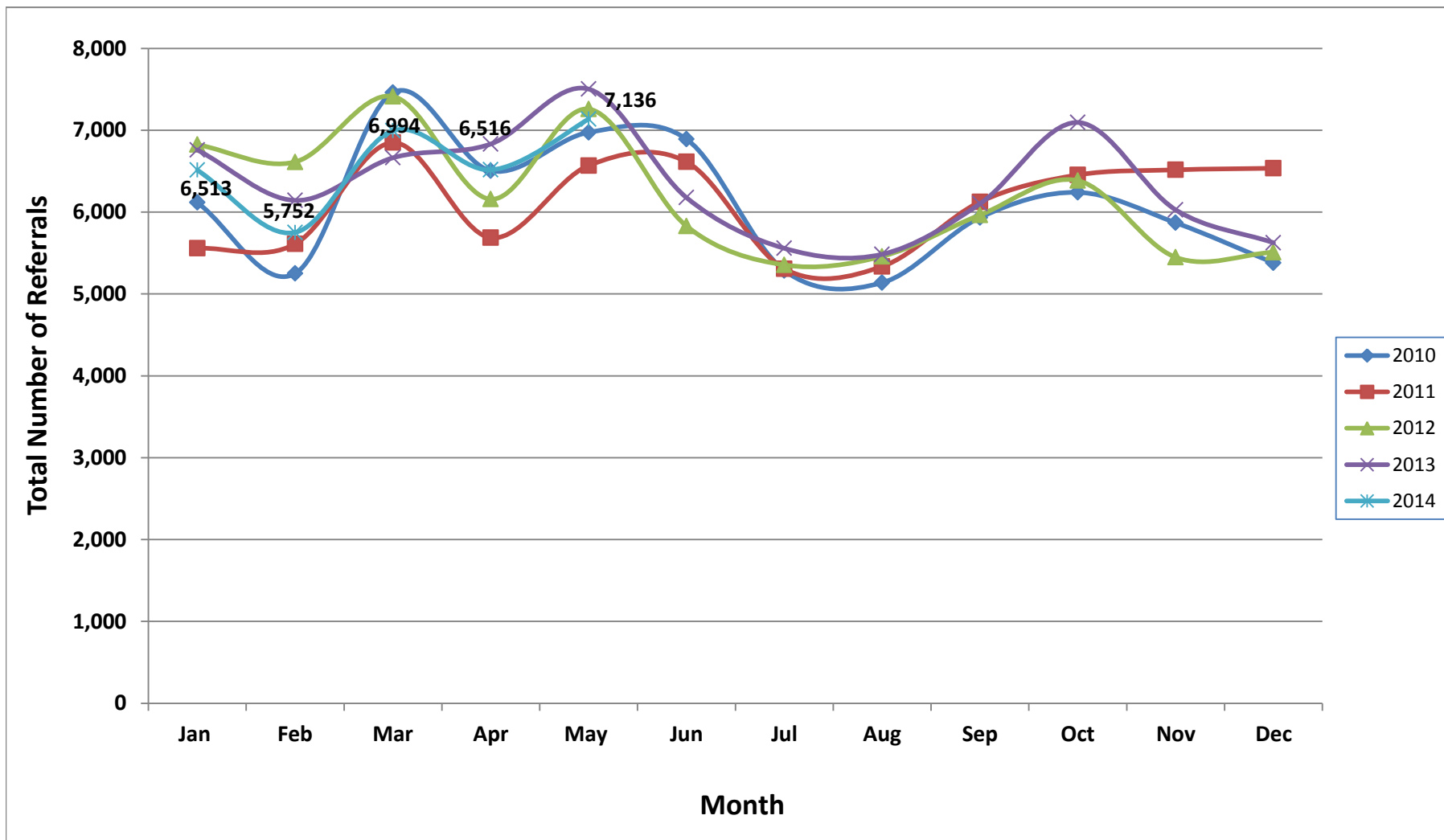
Intake Date		CPS Reports <sup>2,3</sup>	CWS Referrals <sup>2,3</sup>	Total Assignments <sup>2,3</sup>
2013	Jan 2013	5,464	1,296	6,760
	Feb 2013	4,966	1,177	6,143
	Mar 2013	5,355	1,309	6,664
	Apr 2013	5,430	1,402	6,832
	May 2013	5,993	1,510	7,503
	June 2013	4,947	1,230	6,177
	July 2013	4,330	1,228	5,558
	Aug 2013	4,330	1,155	5,485
	Sep 2013	4,851	1,251	6,102
	Oct 2013	5,614	1,481	7,095
	Nov 2013	4,694	1,334	6,028
	Dec 2013	4,397	1,229	5,626
	<b>Total</b>	<b>60,371</b>	<b>15,602</b>	<b>75,973</b>
2014	Jan 2014	5,138	1,375	6,513
	Feb 2014	4,499	1,253	5,752
	Mar 2014	5,438	1,556	6,994
	Apr 2014	5,105	1,411	6,516
	May 2014	5,541	1,595	7,136
	<b>Total</b>	<b>25,721</b>	<b>7,190</b>	<b>32,911</b>
<b>Grand Total</b>		<b>265,718</b>	<b>63,598</b>	<b>329,316</b>

<sup>1</sup>Source of Data: NJ SPIRIT

<sup>2</sup>A CPS Report or a CWS Referral may include multiple children in a family, with one or more allegation or request for services. In these cases, each CPS Report or CWS Referral is counted once - the CPS Report or the CWS Referral is the unit of analysis rather than the child.

<sup>3</sup>Includes CPS Reports and CWS Referrals with an assignment to an office via the Assignment Designee process.

### CP&P Annual Trends in CPS Reports and CWS Referrals



The data contained in this report is considered preliminary and as a result, these figures might be different than the final reported figures. The data is produced for continuous quality improvement.

**Table 3: Source of CPS Reports and CWS Referrals**

	Source	May 2013	June 2013	July 2013	Aug 2013	Sep 2013	Oct 2013	Nov 2013	Dec 2013	Jan 2014	Feb 2014	Mar 2014	Apr 2014	May 2014		13 Month Total	
CWS Referrals	School Staff	368	187	29	19	183	359	291	250	316	299	386	299	388	25%	3374	19%
	Healthcare Provider	212	154	195	191	218	209	194	164	185	175	213	216	223	14%	2549	15%
	Law Enforcement	173	150	160	179	166	134	150	136	172	146	173	182	189	12%	2110	12%
	Government Agency	144	152	185	165	124	186	169	140	160	151	150	187	173	11%	2086	12%
	Parent	146	141	157	154	157	151	133	147	139	111	134	138	179	11%	1887	11%
	Relative/Friend/Neighbor	94	96	102	123	95	106	80	100	113	88	111	82	98	6%	1288	7%
	Anonymous	98	91	96	67	97	98	81	101	76	77	113	89	96	6%	1180	7%
	CP&P	116	86	99	85	68	77	66	66	79	79	93	74	95	6%	1083	6%
	Court/Legal	38	34	50	56	50	67	34	30	33	40	55	51	40	3%	578	3%
	Community Group/Individual	48	47	60	42	33	37	40	34	38	30	43	46	50	3%	548	3%
	Facility Staff	33	43	39	36	17	28	36	32	27	33	41	28	28	2%	421	2%
	Child (Self)	20	31	26	27	25	24	24	22	30	24	21	22	23	1%	319	2%
	<b>CWS Total</b>	<b>1,490</b>	<b>1,212</b>	<b>1,198</b>	<b>1,144</b>	<b>1,233</b>	<b>1,476</b>	<b>1,298</b>	<b>1,222</b>	<b>1,368</b>	<b>1,253</b>	<b>1,533</b>	<b>1,414</b>	<b>1,582</b>	<b>100%</b>	<b>17,423</b>	
CPS Reports	School Staff	1,561	865	122	49	874	1,484	1,152	964	1,342	1,176	1,600	1,212	1,460	27%	13,861	22%
	Law Enforcement	788	771	769	774	731	691	686	611	650	602	713	662	791	15%	9,239	15%
	Anonymous	844	702	671	678	731	774	626	557	681	562	658	627	609	11%	8,720	14%
	Healthcare Provider	703	604	625	620	545	648	549	523	650	515	630	647	582	11%	7,841	12%
	Parent	466	451	459	506	429	405	385	410	415	359	382	381	477	9%	5,525	9%
	Relative/Friend/Neighbor	465	453	481	493	465	432	329	334	369	314	334	437	452	8%	5,358	8%
	Other	300	303	376	358	320	324	280	314	273	267	315	308	320	6%	4,058	6%
	State Agency	338	281	320	327	269	326	271	271	269	246	294	288	325	6%	3,825	6%
	Community Group/Individual	223	185	211	200	171	198	175	148	204	190	202	222	218	4%	2,547	4%
	Court/Legal	59	82	75	78	66	81	49	78	69	69	89	90	74	1%	959	2%
	Facility Staff (incl Correctional Facility)	55	67	66	54	49	67	43	39	51	58	54	46	40	1%	689	1%
	Child (Self)	15	24	22	23	26	27	25	22	16	14	19	25	20	0%	278	0.4%
	Daycare/Babysitter	16	21	20	20	10	20	16	18	10	8	16	14	15	0%	204	0.3%
		<b>CPS Total</b>	<b>5,833</b>	<b>4,809</b>	<b>4,217</b>	<b>4,180</b>	<b>4,686</b>	<b>5,477</b>	<b>4,586</b>	<b>4,289</b>	<b>4,999</b>	<b>4,380</b>	<b>5,306</b>	<b>4,959</b>	<b>5,383</b>	<b>100%</b>	<b>63,104</b>
	<b>Unable to Determine</b>	<b>180</b>	<b>156</b>	<b>143</b>	<b>161</b>	<b>183</b>	<b>142</b>	<b>144</b>	<b>115</b>	<b>146</b>	<b>119</b>	<b>155</b>	<b>143</b>	<b>171</b>		<b>1,958</b>	
	<b>Grand Total</b>	<b>7,503</b>	<b>6,177</b>	<b>5,558</b>	<b>5,485</b>	<b>6,102</b>	<b>7,095</b>	<b>6,028</b>	<b>5,626</b>	<b>6,513</b>	<b>5,752</b>	<b>6,994</b>	<b>6,516</b>	<b>7,136</b>		<b>82,485</b>	

The data contained in this report is considered preliminary and as a result, these figures might be different than the final reported figures. The data is produced for continuous quality improvement across DCF.

**Table 4: Monthly Count of CPS Reports and CWS Referrals Assigned to Counties**

County														Average # of Assignments the Last 12 Months	Apr 14 to May 14 Numerical Difference	May 13 to May 14 Numerical Difference
	May 2013	June 2013	July 2013	Aug 2013	Sep 2013	Oct 2013	Nov 2013	Dec 2013	Jan 2014	Feb 2014	Mar 2014	Apr 2014	May 2014			
Atlantic	275	235	231	199	264	280	223	218	256	233	267	242	288	245	46	13
Bergen	387	384	240	275	296	385	344	314	359	307	342	334	378	330	44	-9
Burlington	358	277	291	269	281	362	256	233	318	278	342	312	351	298	39	-7
Camden	639	477	456	542	522	553	485	494	483	464	495	547	567	507	20	-72
Cape May	88	85	109	99	93	94	61	82	89	84	74	87	112	89	25	24
Cumberland	295	201	198	198	205	262	210	183	197	214	208	222	247	212	25	-48
Essex	777	651	596	607	657	712	653	574	651	563	762	664	753	654	89	-24
Gloucester	297	241	231	266	296	261	248	213	259	258	266	234	297	256	63	0
Hudson	503	440	386	384	407	506	441	429	493	399	537	437	509	447	72	6
Hunterdon	66	53	50	32	36	64	44	43	65	51	68	50	59	51	9	-7
Mercer	301	232	207	225	235	253	237	215	251	228	296	279	299	246	20	-2
Middlesex	502	416	302	319	420	503	395	366	454	366	499	438	475	413	37	-27
Monmouth	426	363	321	297	329	386	354	337	373	357	429	379	400	360	21	-26
Morris	249	215	188	169	207	231	206	206	242	209	224	237	250	215	13	1
Ocean	480	426	385	339	380	448	385	340	432	350	429	369	411	391	42	-69
Passaic	470	390	354	320	363	467	381	388	394	328	471	472	478	401	6	8
Salem	97	83	82	84	84	97	74	72	85	76	77	79	85	82	6	-12
Somerset	195	140	137	106	160	190	148	132	174	159	196	171	159	156	-12	-36
Sussex	128	102	120	78	88	102	110	73	115	86	88	106	116	99	10	-12
Union	360	267	202	206	258	360	295	302	329	303	337	347	306	293	-41	-54
Warren	106	93	89	96	94	105	85	96	95	106	111	103	99	98	-4	-7
<b>County Subtotals</b>	<b>6,999</b>	<b>5,771</b>	<b>5,175</b>	<b>5,110</b>	<b>5,675</b>	<b>6,621</b>	<b>5,635</b>	<b>5,310</b>	<b>6,114</b>	<b>5,419</b>	<b>6,518</b>	<b>6,109</b>	<b>6,639</b>	<b>5,841</b>	<b>530</b>	<b>-360</b>
Central Region IAIU	74	55	66	61	57	80	61	35	63	54	60	60	75	61	15	1
Metro Region IAIU	59	59	37	38	50	59	49	47	42	44	91	63	57	53	-6	-2
Northern Region IAIU	87	61	61	46	68	83	67	63	77	66	88	60	85	69	25	-2
Southern Region IAIU	103	75	74	69	65	108	70	54	69	50	78	79	106	75	27	3
<b>IAIU Subtotals</b>	<b>323</b>	<b>250</b>	<b>238</b>	<b>214</b>	<b>240</b>	<b>330</b>	<b>247</b>	<b>199</b>	<b>251</b>	<b>214</b>	<b>317</b>	<b>262</b>	<b>323</b>	<b>257</b>	<b>61</b>	<b>0</b>
<b>Unable to Determine<sup>1</sup></b>	<b>180</b>	<b>156</b>	<b>143</b>	<b>161</b>	<b>183</b>	<b>142</b>	<b>144</b>	<b>115</b>	<b>146</b>	<b>119</b>	<b>155</b>	<b>143</b>	<b>171</b>	<b>148</b>	<b>28</b>	<b>-9</b>
<b>Other Offices</b>	<b>1</b>	<b>0</b>	<b>2</b>	<b>0</b>	<b>4</b>	<b>2</b>	<b>2</b>	<b>2</b>	<b>2</b>	<b>0</b>	<b>4</b>	<b>2</b>	<b>3</b>	<b>2</b>		<b>2</b>
<b>Grand Total</b>	<b>7,503</b>	<b>6,177</b>	<b>5,558</b>	<b>5,485</b>	<b>6,102</b>	<b>7,095</b>	<b>6,028</b>	<b>5,626</b>	<b>6,513</b>	<b>5,752</b>	<b>6,994</b>	<b>6,516</b>	<b>7,136</b>	<b>6,249</b>	<b>620</b>	<b>-367</b>

<sup>1</sup>CPS Reports or CWS Referrals not assigned to an office through the Assignment Designee, but were assigned to an office for an assessment or investigation.

**Greatest One Month County Decrease (Numeric and/or Percent)**

**Greatest One Month County Increase (Numeric and/or Percent)**


The data contained in this report is considered preliminary and as a result, these figures might be different than the final reported figures. The data is produced for continuous quality improvement across DCF.



**Table 5: Monthly Count of CPS Reports and CWS Referrals Assigned to CP&P Local Offices**

County	Local Office	Type of Referral	Referral Month												Total	
			May 2013	Jun 2013	Jul 2013	Aug 2013	Sep 2013	Oct 2013	Nov 2013	Dec 2013	Jan 2014	Feb 2014	Mar 2014	Apr 2014		May 2014
ATLANTIC	Atlantic East	CPS	135	113	91	106	112	142	107	94	118	93	116	117	124	1,468
		CWS	22	23	38	13	25	32	30	25	31	36	36	28	32	371
		<b>Total</b>	<b>157</b>	<b>136</b>	<b>129</b>	<b>119</b>	<b>137</b>	<b>174</b>	<b>137</b>	<b>119</b>	<b>149</b>	<b>129</b>	<b>152</b>	<b>145</b>	<b>156</b>	<b>1,839</b>
	Atlantic West	CPS	89	73	81	65	112	82	75	76	80	84	94	75	107	1,093
		CWS	29	26	21	15	15	24	11	23	27	20	21	22	25	279
		<b>Total</b>	<b>118</b>	<b>99</b>	<b>102</b>	<b>80</b>	<b>127</b>	<b>106</b>	<b>86</b>	<b>99</b>	<b>107</b>	<b>104</b>	<b>115</b>	<b>97</b>	<b>132</b>	<b>1,372</b>
County Total	CPS	224	186	172	171	224	224	182	170	198	177	210	192	231	2,561	
	<b>Total</b>	<b>275</b>	<b>235</b>	<b>231</b>	<b>199</b>	<b>264</b>	<b>280</b>	<b>223</b>	<b>218</b>	<b>256</b>	<b>233</b>	<b>267</b>	<b>242</b>	<b>288</b>	<b>3,211</b>	
BERGEN	Bergen Central	CPS	136	112	72	79	104	127	115	90	114	97	127	115	121	1,409
		CWS	32	47	17	32	22	55	33	29	39	25	35	39	45	450
		<b>Total</b>	<b>168</b>	<b>159</b>	<b>89</b>	<b>111</b>	<b>126</b>	<b>182</b>	<b>148</b>	<b>119</b>	<b>153</b>	<b>122</b>	<b>162</b>	<b>154</b>	<b>166</b>	<b>1,859</b>
	Bergen South	CPS	179	183	117	126	125	158	149	149	162	137	145	136	163	1,929
		CWS	40	42	34	38	45	45	47	46	44	48	35	44	49	557
		<b>Total</b>	<b>219</b>	<b>225</b>	<b>151</b>	<b>164</b>	<b>170</b>	<b>203</b>	<b>196</b>	<b>195</b>	<b>206</b>	<b>185</b>	<b>180</b>	<b>180</b>	<b>212</b>	<b>2,486</b>
County Total	CPS	315	295	189	205	229	285	264	239	276	234	272	251	284	3,338	
	<b>Total</b>	<b>387</b>	<b>384</b>	<b>240</b>	<b>275</b>	<b>296</b>	<b>385</b>	<b>344</b>	<b>314</b>	<b>359</b>	<b>307</b>	<b>342</b>	<b>334</b>	<b>378</b>	<b>4,345</b>	
BURLINGTON	Burlington East	CPS	138	120	105	93	115	150	99	89	120	104	128	119	132	1,512
		CWS	34	27	30	28	30	38	21	31	29	27	40	23	37	395
		<b>Total</b>	<b>172</b>	<b>147</b>	<b>135</b>	<b>121</b>	<b>145</b>	<b>188</b>	<b>120</b>	<b>120</b>	<b>149</b>	<b>131</b>	<b>168</b>	<b>142</b>	<b>169</b>	<b>1,907</b>
	Burlington West	CPS	153	116	124	113	98	142	113	83	139	108	139	133	141	1,602
		CWS	33	14	32	35	38	32	23	30	30	39	35	37	41	419
		<b>Total</b>	<b>186</b>	<b>130</b>	<b>156</b>	<b>148</b>	<b>136</b>	<b>174</b>	<b>136</b>	<b>113</b>	<b>169</b>	<b>147</b>	<b>174</b>	<b>170</b>	<b>182</b>	<b>2,021</b>
County Total	CPS	291	236	229	206	213	292	212	172	259	212	267	252	273	3,114	
	<b>Total</b>	<b>358</b>	<b>277</b>	<b>291</b>	<b>269</b>	<b>281</b>	<b>362</b>	<b>256</b>	<b>233</b>	<b>318</b>	<b>278</b>	<b>342</b>	<b>312</b>	<b>351</b>	<b>3,928</b>	
CAMDEN	Camden Central	CPS	163	101	99	108	128	112	99	107	119	115	100	127	110	1,488
		CWS	27	30	22	39	29	29	38	31	28	23	23	37	48	404
		<b>Total</b>	<b>190</b>	<b>131</b>	<b>121</b>	<b>147</b>	<b>157</b>	<b>141</b>	<b>137</b>	<b>138</b>	<b>147</b>	<b>138</b>	<b>123</b>	<b>164</b>	<b>158</b>	<b>1,892</b>
	Camden East	CPS	143	110	89	133	96	109	101	100	96	85	97	112	118	1,389
		CWS	38	29	26	30	34	28	29	36	25	29	45	34	21	404
		<b>Total</b>	<b>181</b>	<b>139</b>	<b>115</b>	<b>163</b>	<b>130</b>	<b>137</b>	<b>130</b>	<b>136</b>	<b>121</b>	<b>114</b>	<b>142</b>	<b>146</b>	<b>139</b>	<b>1,793</b>
	Camden North	CPS	99	82	104	91	91	107	86	93	94	95	94	107	96	1,239
		CWS	40	26	25	32	26	35	26	28	22	30	27	39	41	397
		<b>Total</b>	<b>139</b>	<b>108</b>	<b>129</b>	<b>123</b>	<b>117</b>	<b>142</b>	<b>112</b>	<b>121</b>	<b>116</b>	<b>125</b>	<b>121</b>	<b>146</b>	<b>137</b>	<b>1,636</b>
	Camden South	CPS	104	86	73	93	101	100	84	80	82	63	77	75	101	1,119
CWS		25	13	18	16	17	33	22	19	17	24	32	16	32	284	
<b>Total</b>		<b>129</b>	<b>99</b>	<b>91</b>	<b>109</b>	<b>118</b>	<b>133</b>	<b>106</b>	<b>99</b>	<b>99</b>	<b>87</b>	<b>109</b>	<b>91</b>	<b>133</b>	<b>1,403</b>	
County Total	CPS	509	379	365	425	416	428	370	380	391	358	368	421	425	5,235	
	<b>Total</b>	<b>639</b>	<b>477</b>	<b>456</b>	<b>542</b>	<b>522</b>	<b>553</b>	<b>485</b>	<b>494</b>	<b>483</b>	<b>464</b>	<b>495</b>	<b>547</b>	<b>567</b>	<b>6,724</b>	
CAPE MAY	Cape May	CPS	70	60	82	79	77	73	46	61	67	61	57	69	92	894
		CWS	18	25	27	20	16	21	15	21	22	23	17	18	20	263
		<b>Total</b>	<b>88</b>	<b>85</b>	<b>109</b>	<b>99</b>	<b>93</b>	<b>94</b>	<b>61</b>	<b>82</b>	<b>89</b>	<b>84</b>	<b>74</b>	<b>87</b>	<b>112</b>	<b>1,157</b>
	County Total	CPS	70	60	82	79	77	73	46	61	67	61	57	69	92	894
CUMBERLAND	Cumberland East	CPS	88	54	57	63	55	61	49	59	45	60	48	51	64	754
		CWS	13	12	11	15	23	22	16	9	16	12	13	21	18	201
		<b>Total</b>	<b>101</b>	<b>66</b>	<b>68</b>	<b>78</b>	<b>78</b>	<b>83</b>	<b>65</b>	<b>68</b>	<b>61</b>	<b>72</b>	<b>61</b>	<b>72</b>	<b>82</b>	<b>955</b>
	Cumberland West	CPS	151	109	107	98	96	146	107	93	107	109	112	120	132	1,487
		CWS	43	26	23	22	31	33	38	22	29	33	35	30	33	398
		<b>Total</b>	<b>194</b>	<b>135</b>	<b>130</b>	<b>120</b>	<b>127</b>	<b>179</b>	<b>145</b>	<b>115</b>	<b>136</b>	<b>142</b>	<b>147</b>	<b>150</b>	<b>165</b>	<b>1,885</b>
County Total	CPS	239	163	164	161	151	207	156	152	152	169	160	171	196	2,241	
	<b>Total</b>	<b>295</b>	<b>201</b>	<b>198</b>	<b>198</b>	<b>205</b>	<b>262</b>	<b>210</b>	<b>183</b>	<b>197</b>	<b>214</b>	<b>208</b>	<b>222</b>	<b>247</b>	<b>2,840</b>	

The data contained in this report is considered preliminary and as a result, these figures might be different than the final reported figures. The data is produced for continuous quality improvement across DCF.

**Table 5: Monthly Count of CPS Reports and CWS Referrals Assigned to CP&P Local Offices**

County	Local Office	Type of Referral	Referral Month													Total
			May 2013	Jun 2013	Jul 2013	Aug 2013	Sep 2013	Oct 2013	Nov 2013	Dec 2013	Jan 2014	Feb 2014	Mar 2014	Apr 2014	May 2014	
ESSEX	Essex Central	CPS	98	94	93	76	78	111	76	93	89	85	101	93	95	1,182
		CWS	33	30	33	23	32	36	40	30	41	27	36	26	36	423
		<b>Total</b>	<b>131</b>	<b>124</b>	<b>126</b>	<b>99</b>	<b>110</b>	<b>147</b>	<b>116</b>	<b>123</b>	<b>130</b>	<b>112</b>	<b>137</b>	<b>119</b>	<b>131</b>	<b>1,605</b>
	Essex North	CPS	83	78	51	61	61	85	68	54	68	50	88	68	78	893
		CWS	17	12	16	14	17	28	20	14	19	14	16	18	29	234
		<b>Total</b>	<b>100</b>	<b>90</b>	<b>67</b>	<b>75</b>	<b>78</b>	<b>113</b>	<b>88</b>	<b>68</b>	<b>87</b>	<b>64</b>	<b>104</b>	<b>86</b>	<b>107</b>	<b>1,127</b>
	Essex South	CPS	91	67	58	51	66	79	68	48	64	63	80	64	63	862
		CWS	25	18	26	27	30	16	41	22	23	14	32	28	25	327
		<b>Total</b>	<b>116</b>	<b>85</b>	<b>84</b>	<b>78</b>	<b>96</b>	<b>95</b>	<b>109</b>	<b>70</b>	<b>87</b>	<b>77</b>	<b>112</b>	<b>92</b>	<b>88</b>	<b>1,189</b>
	Newark Center City	CPS	97	82	79	91	88	84	93	68	81	83	104	79	85	1,114
		CWS	43	40	24	21	27	29	26	22	18	23	28	26	46	373
		<b>Total</b>	<b>140</b>	<b>122</b>	<b>103</b>	<b>112</b>	<b>115</b>	<b>113</b>	<b>119</b>	<b>90</b>	<b>99</b>	<b>106</b>	<b>132</b>	<b>105</b>	<b>131</b>	<b>1,487</b>
	Newark Northeast	CPS	108	75	77	91	103	96	84	81	101	63	90	77	103	1,149
		CWS	39	24	25	26	27	22	28	14	27	23	29	34	39	357
		<b>Total</b>	<b>147</b>	<b>99</b>	<b>102</b>	<b>117</b>	<b>130</b>	<b>118</b>	<b>112</b>	<b>95</b>	<b>128</b>	<b>86</b>	<b>119</b>	<b>111</b>	<b>142</b>	<b>1,506</b>
	Newark South	CPS	105	100	90	102	102	102	68	97	93	88	99	114	112	1,272
		CWS	35	28	24	21	25	19	40	28	26	30	59	36	42	413
		<b>Total</b>	<b>140</b>	<b>128</b>	<b>114</b>	<b>123</b>	<b>127</b>	<b>121</b>	<b>108</b>	<b>125</b>	<b>119</b>	<b>118</b>	<b>158</b>	<b>150</b>	<b>154</b>	<b>1,685</b>
	Newark Adoption Office	CPS	0	1	0	0	0	4	0	0	1	0	0	1	0	7
		CWS	3	2	0	3	1	1	1	3	0	0	0	0	0	14
<b>Total</b>		<b>3</b>	<b>3</b>	<b>0</b>	<b>3</b>	<b>1</b>	<b>5</b>	<b>1</b>	<b>3</b>	<b>1</b>	<b>0</b>	<b>0</b>	<b>1</b>	<b>0</b>	<b>21</b>	
County Total	CPS	582	497	448	472	498	561	457	441	497	432	562	496	536	6,479	
	CWS	195	154	148	135	159	151	196	133	154	131	200	168	217	2,141	
	<b>Total</b>	<b>777</b>	<b>651</b>	<b>596</b>	<b>607</b>	<b>657</b>	<b>712</b>	<b>653</b>	<b>574</b>	<b>651</b>	<b>563</b>	<b>762</b>	<b>664</b>	<b>753</b>	<b>8,620</b>	
GLOUCESTER	Gloucester East	CPS	114	97	90	93	113	98	90	74	95	95	97	82	114	1,252
		CWS	20	24	22	27	28	27	18	26	31	19	32	27	31	332
		<b>Total</b>	<b>134</b>	<b>121</b>	<b>112</b>	<b>120</b>	<b>141</b>	<b>125</b>	<b>108</b>	<b>100</b>	<b>126</b>	<b>114</b>	<b>129</b>	<b>109</b>	<b>145</b>	<b>1,584</b>
	Gloucester West	CPS	129	105	97	119	111	109	109	92	108	110	112	107	116	1,424
		CWS	34	15	22	27	44	27	31	21	25	34	25	18	36	359
		<b>Total</b>	<b>163</b>	<b>120</b>	<b>119</b>	<b>146</b>	<b>155</b>	<b>136</b>	<b>140</b>	<b>113</b>	<b>133</b>	<b>144</b>	<b>137</b>	<b>125</b>	<b>152</b>	<b>1,783</b>
	County Total	CPS	243	202	187	212	224	207	199	166	203	205	209	189	230	2,676
<b>Total</b>		<b>297</b>	<b>241</b>	<b>231</b>	<b>266</b>	<b>296</b>	<b>261</b>	<b>248</b>	<b>213</b>	<b>259</b>	<b>258</b>	<b>266</b>	<b>234</b>	<b>297</b>	<b>3,367</b>	
HUDSON	Hudson Central	CPS	80	71	63	60	80	80	76	59	85	75	79	80	96	984
		CWS	24	25	31	30	28	29	30	23	18	23	21	22	32	336
		<b>Total</b>	<b>104</b>	<b>96</b>	<b>94</b>	<b>90</b>	<b>108</b>	<b>109</b>	<b>106</b>	<b>82</b>	<b>103</b>	<b>98</b>	<b>100</b>	<b>102</b>	<b>128</b>	<b>1,320</b>
	Hudson North	CPS	104	92	63	59	74	96	89	103	109	85	105	86	93	1,158
		CWS	26	22	18	27	16	38	19	20	33	18	25	19	25	306
		<b>Total</b>	<b>130</b>	<b>114</b>	<b>81</b>	<b>86</b>	<b>90</b>	<b>134</b>	<b>108</b>	<b>123</b>	<b>142</b>	<b>103</b>	<b>130</b>	<b>105</b>	<b>118</b>	<b>1,464</b>
	Hudson South	CPS	115	86	88	93	85	112	76	89	104	80	112	83	93	1,216
		CWS	24	39	39	26	20	24	33	17	28	25	44	33	41	393
		<b>Total</b>	<b>139</b>	<b>125</b>	<b>127</b>	<b>119</b>	<b>105</b>	<b>136</b>	<b>109</b>	<b>106</b>	<b>132</b>	<b>105</b>	<b>156</b>	<b>116</b>	<b>134</b>	<b>1,609</b>
	Hudson West	CPS	110	88	71	67	74	102	97	79	85	67	113	90	102	1,145
		CWS	20	17	13	22	30	25	21	39	31	26	38	24	27	333
		<b>Total</b>	<b>130</b>	<b>105</b>	<b>84</b>	<b>89</b>	<b>104</b>	<b>127</b>	<b>118</b>	<b>118</b>	<b>116</b>	<b>93</b>	<b>151</b>	<b>114</b>	<b>129</b>	<b>1,478</b>
	County Total	CPS	409	337	285	279	313	390	338	330	383	307	409	339	384	4,503
<b>Total</b>		<b>503</b>	<b>440</b>	<b>386</b>	<b>384</b>	<b>407</b>	<b>506</b>	<b>441</b>	<b>429</b>	<b>493</b>	<b>399</b>	<b>537</b>	<b>437</b>	<b>509</b>	<b>5,871</b>	
HUNTERDON	Hunterdon	CPS	52	40	43	20	21	51	31	35	47	38	55	39	40	512
		CWS	14	13	7	12	15	13	13	8	18	13	13	11	19	169
		<b>Total</b>	<b>66</b>	<b>53</b>	<b>50</b>	<b>32</b>	<b>36</b>	<b>64</b>	<b>44</b>	<b>43</b>	<b>65</b>	<b>51</b>	<b>68</b>	<b>50</b>	<b>59</b>	<b>681</b>
	County Total	CPS	52	40	43	20	21	51	31	35	47	38	55	39	40	512
		<b>Total</b>	<b>66</b>	<b>53</b>	<b>50</b>	<b>32</b>	<b>36</b>	<b>64</b>	<b>44</b>	<b>43</b>	<b>65</b>	<b>51</b>	<b>68</b>	<b>50</b>	<b>59</b>	<b>681</b>
MERCER	Mercer North	CPS	117	81	85	69	94	106	84	80	97	101	109	93	105	1,221
		CWS	25	28	28	25	17	18	33	28	27	25	23	28	43	348
		<b>Total</b>	<b>142</b>	<b>109</b>	<b>113</b>	<b>94</b>	<b>111</b>	<b>124</b>	<b>117</b>	<b>108</b>	<b>124</b>	<b>126</b>	<b>132</b>	<b>121</b>	<b>148</b>	<b>1,569</b>
	Mercer South	CPS	121	98	75	108	99	110	91	90	107	83	127	123	128	1,360
		CWS	38	25	19	23	25	19	29	17	20	19	37	35	23	329
		<b>Total</b>	<b>159</b>	<b>123</b>	<b>94</b>	<b>131</b>	<b>124</b>	<b>129</b>	<b>120</b>	<b>107</b>	<b>127</b>	<b>102</b>	<b>164</b>	<b>158</b>	<b>151</b>	<b>1,689</b>
	County Total	CPS	238	179	160	177	193	216	175	170	204	184	236	216	233	2,581
<b>Total</b>		<b>301</b>	<b>232</b>	<b>207</b>	<b>225</b>	<b>235</b>	<b>253</b>	<b>237</b>	<b>215</b>	<b>251</b>	<b>228</b>	<b>296</b>	<b>279</b>	<b>299</b>	<b>3,258</b>	

The data contained in this report is considered preliminary and as a result, these figures might be different than the final reported figures. The data is produced for continuous quality improvement across DCF.

**Table 5: Monthly Count of CPS Reports and CWS Referrals Assigned to CP&P Local Offices**

County	Local Office	Type of Referral	Referral Month												Total	
			May 2013	Jun 2013	Jul 2013	Aug 2013	Sep 2013	Oct 2013	Nov 2013	Dec 2013	Jan 2014	Feb 2014	Mar 2014	Apr 2014		May 2014
MIDDLESEX	Middlesex Central	CPS	107	86	38	64	80	100	74	73	82	71	87	78	87	1,027
		CWS	24	18	25	15	17	28	22	13	22	19	21	22	20	266
		<b>Total</b>	<b>131</b>	<b>104</b>	<b>63</b>	<b>79</b>	<b>97</b>	<b>128</b>	<b>96</b>	<b>86</b>	<b>104</b>	<b>90</b>	<b>108</b>	<b>100</b>	<b>107</b>	<b>1,293</b>
	Middlesex Coastal	CPS	147	126	103	107	149	145	112	96	131	97	171	135	149	1,668
		CWS	43	25	33	29	26	42	22	35	32	21	37	34	28	407
		<b>Total</b>	<b>190</b>	<b>151</b>	<b>136</b>	<b>136</b>	<b>175</b>	<b>187</b>	<b>134</b>	<b>131</b>	<b>163</b>	<b>118</b>	<b>208</b>	<b>169</b>	<b>177</b>	<b>2,075</b>
	Middlesex West	CPS	143	131	86	82	120	150	127	107	153	124	143	136	162	1,664
		CWS	38	30	17	22	28	38	38	42	34	34	40	33	29	423
		<b>Total</b>	<b>181</b>	<b>161</b>	<b>103</b>	<b>104</b>	<b>148</b>	<b>188</b>	<b>165</b>	<b>149</b>	<b>187</b>	<b>158</b>	<b>183</b>	<b>169</b>	<b>191</b>	<b>2,087</b>
	County Total	CPS	397	343	227	253	349	395	313	276	366	292	401	349	398	4,359
CWS		105	73	75	66	71	108	82	90	88	74	98	89	77	1,096	
	<b>Total</b>	<b>502</b>	<b>416</b>	<b>302</b>	<b>319</b>	<b>420</b>	<b>503</b>	<b>395</b>	<b>366</b>	<b>454</b>	<b>366</b>	<b>499</b>	<b>438</b>	<b>475</b>	<b>5,455</b>	
MONMOUTH	Monmouth North	CPS	180	157	128	132	141	179	167	151	147	147	183	166	183	2,061
		CWS	55	40	33	29	33	32	41	50	36	40	51	57	35	532
		<b>Total</b>	<b>235</b>	<b>197</b>	<b>161</b>	<b>161</b>	<b>174</b>	<b>211</b>	<b>208</b>	<b>201</b>	<b>183</b>	<b>187</b>	<b>234</b>	<b>223</b>	<b>218</b>	<b>2,593</b>
	Monmouth South	CPS	160	131	128	103	129	138	112	104	144	136	150	117	131	1,683
		CWS	31	35	32	33	26	37	34	32	46	34	45	39	51	475
		<b>Total</b>	<b>191</b>	<b>166</b>	<b>160</b>	<b>136</b>	<b>155</b>	<b>175</b>	<b>146</b>	<b>136</b>	<b>190</b>	<b>170</b>	<b>195</b>	<b>156</b>	<b>182</b>	<b>2,158</b>
	County Total	CPS	340	288	256	235	270	317	279	255	291	283	333	283	314	3,744
		CWS	86	75	65	62	59	69	75	82	82	74	96	96	86	1,007
		<b>Total</b>	<b>426</b>	<b>363</b>	<b>321</b>	<b>297</b>	<b>329</b>	<b>386</b>	<b>354</b>	<b>337</b>	<b>373</b>	<b>357</b>	<b>429</b>	<b>379</b>	<b>400</b>	<b>4,751</b>
	MORRIS	Morris West	CPS	110	97	76	73	88	103	101	94	110	108	97	102	97
CWS			29	33	28	33	35	31	23	29	26	26	26	33	32	384
<b>Total</b>			<b>139</b>	<b>130</b>	<b>104</b>	<b>106</b>	<b>123</b>	<b>134</b>	<b>124</b>	<b>123</b>	<b>136</b>	<b>134</b>	<b>123</b>	<b>135</b>	<b>129</b>	<b>1,640</b>
Morris East		CPS	84	60	63	52	65	81	62	64	76	49	77	85	82	900
		CWS	26	25	21	11	19	16	20	19	30	26	24	17	39	293
		<b>Total</b>	<b>110</b>	<b>85</b>	<b>84</b>	<b>63</b>	<b>84</b>	<b>97</b>	<b>82</b>	<b>83</b>	<b>106</b>	<b>75</b>	<b>101</b>	<b>102</b>	<b>121</b>	<b>1,193</b>
County Total		CPS	194	157	139	125	153	184	163	158	186	157	174	187	179	2,156
		CWS	55	58	49	44	54	47	43	48	56	52	50	50	71	677
		<b>Total</b>	<b>249</b>	<b>215</b>	<b>188</b>	<b>169</b>	<b>207</b>	<b>231</b>	<b>206</b>	<b>206</b>	<b>242</b>	<b>209</b>	<b>224</b>	<b>237</b>	<b>250</b>	<b>2,833</b>
OCEAN		Ocean North	CPS	193	151	131	123	147	179	149	127	146	134	128	149	161
	CWS		49	39	31	22	30	56	34	29	45	31	44	30	38	478
	<b>Total</b>		<b>242</b>	<b>190</b>	<b>162</b>	<b>145</b>	<b>177</b>	<b>235</b>	<b>183</b>	<b>156</b>	<b>191</b>	<b>165</b>	<b>172</b>	<b>179</b>	<b>199</b>	<b>2,396</b>
	Ocean South	CPS	180	203	160	154	173	176	159	150	198	145	207	155	156	2,216
		CWS	58	33	63	40	30	37	43	34	43	40	50	35	56	562
		<b>Total</b>	<b>238</b>	<b>236</b>	<b>223</b>	<b>194</b>	<b>203</b>	<b>213</b>	<b>202</b>	<b>184</b>	<b>241</b>	<b>185</b>	<b>257</b>	<b>190</b>	<b>212</b>	<b>2,778</b>
	County Total	CPS	373	354	291	277	320	355	308	277	344	279	335	304	317	4,134
		CWS	107	72	94	62	60	93	77	63	88	71	94	65	94	1,040
		<b>Total</b>	<b>480</b>	<b>426</b>	<b>385</b>	<b>339</b>	<b>380</b>	<b>448</b>	<b>385</b>	<b>340</b>	<b>432</b>	<b>350</b>	<b>429</b>	<b>369</b>	<b>411</b>	<b>5,174</b>
	PASSAIC	Passaic Central	CPS	181	158	144	128	131	194	161	139	165	152	200	184	203
CWS			52	34	29	27	39	57	37	47	41	44	71	50	55	583
<b>Total</b>			<b>233</b>	<b>192</b>	<b>173</b>	<b>155</b>	<b>170</b>	<b>251</b>	<b>198</b>	<b>186</b>	<b>206</b>	<b>196</b>	<b>271</b>	<b>234</b>	<b>258</b>	<b>2,723</b>
Passaic North		CPS	185	160	136	130	151	160	137	162	136	104	159	176	176	1,972
		CWS	52	38	45	35	42	56	46	40	52	28	41	62	44	581
		<b>Total</b>	<b>237</b>	<b>198</b>	<b>181</b>	<b>165</b>	<b>193</b>	<b>216</b>	<b>183</b>	<b>202</b>	<b>188</b>	<b>132</b>	<b>200</b>	<b>238</b>	<b>220</b>	<b>2,553</b>
County Total		CPS	366	318	280	258	282	354	298	301	301	256	359	360	379	4,112
		CWS	104	72	74	62	81	113	83	87	93	72	112	112	99	1,164
		<b>Total</b>	<b>470</b>	<b>390</b>	<b>354</b>	<b>320</b>	<b>363</b>	<b>467</b>	<b>381</b>	<b>388</b>	<b>394</b>	<b>328</b>	<b>471</b>	<b>472</b>	<b>478</b>	<b>5,276</b>
SALEM		Salem	CPS	78	67	63	65	67	80	52	58	66	59	56	67	66
	CWS		19	16	19	19	17	17	22	14	19	17	21	12	19	231
	<b>Total</b>		<b>97</b>	<b>83</b>	<b>82</b>	<b>84</b>	<b>84</b>	<b>97</b>	<b>74</b>	<b>72</b>	<b>85</b>	<b>76</b>	<b>77</b>	<b>79</b>	<b>85</b>	<b>1,075</b>
	County Total	CPS	78	67	63	65	67	80	52	58	66	59	56	67	66	844
		CWS	19	16	19	19	17	17	22	14	19	17	21	12	19	231
		<b>Total</b>	<b>97</b>	<b>83</b>	<b>82</b>	<b>84</b>	<b>84</b>	<b>97</b>	<b>74</b>	<b>72</b>	<b>85</b>	<b>76</b>	<b>77</b>	<b>79</b>	<b>85</b>	<b>1,075</b>
SOMERSET	Somerset	CPS	165	113	114	86	133	140	122	103	142	125	161	133	120	1,657
		CWS	30	27	23	20	27	50	26	29	32	34	35	38	39	410
		<b>Total</b>	<b>195</b>	<b>140</b>	<b>137</b>	<b>106</b>	<b>160</b>	<b>190</b>	<b>148</b>	<b>132</b>	<b>174</b>	<b>159</b>	<b>196</b>	<b>171</b>	<b>159</b>	<b>2,067</b>
	County Total	CPS	165	113	114	86	133	140	122	103	142	125	161	133	120	1,657
		CWS	30	27	23	20	27	50	26	29	32	34	35	38	39	410
		<b>Total</b>	<b>195</b>	<b>140</b>	<b>137</b>	<b>106</b>	<b>160</b>	<b>190</b>	<b>148</b>	<b>132</b>	<b>174</b>	<b>159</b>	<b>196</b>	<b>171</b>	<b>159</b>	<b>2,067</b>
SUSSEX	Sussex	CPS	113	79	89	62	73	80	82	58	86	71	69	87	88	1,037
		CWS	15	23	31	16	15	22	28	15	29	15	19	19	28	275
		<b>Total</b>	<b>128</b>	<b>102</b>	<b>120</b>	<b>78</b>	<b>88</b>	<b>102</b>	<b>110</b>	<b>73</b>	<b>115</b>	<b>86</b>	<b>88</b>	<b>106</b>	<b>116</b>	<b>1,312</b>
	County Total	CPS	113	79	89	62	73	80	82	58	86	71	69	87	88	1,037
		CWS	15	23	31	16	15	22	28	15	29	15	19	19	28	275
		<b>Total</b>	<b>128</b>	<b>102</b>	<b>120</b>	<b>78</b>	<b>88</b>	<b>102</b>	<b>110</b>	<b>73</b>	<b>115</b>	<b>86</b>	<b>88</b>	<b>106</b>	<b>116</b>	<b>1,312</b>

The data contained in this report is considered preliminary and as a result, these figures might be different than the final reported figures. The data is produced for continuous quality improvement across DCF.

**Table 5: Monthly Count of CPS Reports and CWS Referrals Assigned to CP&P Local Offices**

County	Local Office	Type of Referral	Referral Month												Total	
			May 2013	Jun 2013	Jul 2013	Aug 2013	Sep 2013	Oct 2013	Nov 2013	Dec 2013	Jan 2014	Feb 2014	Mar 2014	Apr 2014		May 2014
UNION	Union Central	CPS	84	59	53	46	56	91	76	75	69	73	79	93	69	923
		CWS	34	17	17	17	18	27	20	20	18	27	34	19	20	288
		<b>Total</b>	<b>118</b>	<b>76</b>	<b>70</b>	<b>63</b>	<b>74</b>	<b>118</b>	<b>96</b>	<b>95</b>	<b>87</b>	<b>100</b>	<b>113</b>	<b>112</b>	<b>89</b>	<b>1,211</b>
	Union East	CPS	100	87	69	64	82	100	87	96	109	77	103	110	79	1,163
		CWS	28	15	13	15	21	28	29	24	30	20	29	34	25	311
		<b>Total</b>	<b>128</b>	<b>102</b>	<b>82</b>	<b>79</b>	<b>103</b>	<b>128</b>	<b>116</b>	<b>120</b>	<b>139</b>	<b>97</b>	<b>132</b>	<b>144</b>	<b>104</b>	<b>1,474</b>
	Union West	CPS	91	73	32	54	65	88	67	70	80	77	59	67	88	911
		CWS	23	16	18	10	16	26	16	17	23	29	33	24	25	276
		<b>Total</b>	<b>114</b>	<b>89</b>	<b>50</b>	<b>64</b>	<b>81</b>	<b>114</b>	<b>83</b>	<b>87</b>	<b>103</b>	<b>106</b>	<b>92</b>	<b>91</b>	<b>113</b>	<b>1,187</b>
	County Total	CPS	275	219	154	164	203	279	230	241	258	227	241	270	236	2,997
CWS		85	48	48	42	55	81	65	61	71	76	96	77	70	875	
<b>Total</b>		<b>360</b>	<b>267</b>	<b>202</b>	<b>206</b>	<b>258</b>	<b>360</b>	<b>295</b>	<b>302</b>	<b>329</b>	<b>303</b>	<b>337</b>	<b>347</b>	<b>306</b>	<b>3,872</b>	
WARREN	Warren	CPS	82	80	69	77	71	78	70	77	70	82	81	76	76	989
		CWS	24	13	20	19	23	27	15	19	25	24	30	27	23	289
		<b>Total</b>	<b>106</b>	<b>93</b>	<b>89</b>	<b>96</b>	<b>94</b>	<b>105</b>	<b>85</b>	<b>96</b>	<b>95</b>	<b>106</b>	<b>111</b>	<b>103</b>	<b>99</b>	<b>1,278</b>
	County Total	CPS	82	80	69	77	71	78	70	77	70	82	81	76	76	989
		CWS	24	13	20	19	23	27	15	19	25	24	30	27	23	289
<b>Total</b>	<b>Total</b>	<b>106</b>	<b>93</b>	<b>89</b>	<b>96</b>	<b>94</b>	<b>105</b>	<b>85</b>	<b>96</b>	<b>95</b>	<b>106</b>	<b>111</b>	<b>103</b>	<b>99</b>	<b>1,278</b>	
<b>County CPS Referral Total</b>		<b>CPS</b>	<b>5,555</b>	<b>4,592</b>	<b>4,006</b>	<b>4,009</b>	<b>4,480</b>	<b>5,196</b>	<b>4,347</b>	<b>4,120</b>	<b>4,787</b>	<b>4,208</b>	<b>5,015</b>	<b>4,751</b>	<b>5,097</b>	<b>60,163</b>
<b>County CWS Referral Total</b>		<b>CWS</b>	<b>1,444</b>	<b>1,179</b>	<b>1,169</b>	<b>1,101</b>	<b>1,195</b>	<b>1,425</b>	<b>1,288</b>	<b>1,190</b>	<b>1,327</b>	<b>1,211</b>	<b>1,503</b>	<b>1,358</b>	<b>1,542</b>	<b>16,932</b>
<b>County Referral Total</b>		<b>Total</b>	<b>6,999</b>	<b>5,771</b>	<b>5,175</b>	<b>5,110</b>	<b>5,675</b>	<b>6,621</b>	<b>5,635</b>	<b>5,310</b>	<b>6,114</b>	<b>5,419</b>	<b>6,518</b>	<b>6,109</b>	<b>6,639</b>	<b>77,095</b>
Central Region IAIU		CPS	74	55	66	61	57	80	61	35	63	54	60	60	75	801
		CWS	0	0	0	0	0	0	0	0	0	0	0	0	0	0
		<b>Total</b>	<b>74</b>	<b>55</b>	<b>66</b>	<b>61</b>	<b>57</b>	<b>80</b>	<b>61</b>	<b>35</b>	<b>63</b>	<b>54</b>	<b>60</b>	<b>60</b>	<b>75</b>	<b>801</b>
Metro Region IAIU		CPS	59	59	37	38	50	59	49	47	42	44	91	63	57	695
		CWS	0	0	0	0	0	0	0	0	0	0	0	0	0	0
		<b>Total</b>	<b>59</b>	<b>59</b>	<b>37</b>	<b>38</b>	<b>50</b>	<b>59</b>	<b>49</b>	<b>47</b>	<b>42</b>	<b>44</b>	<b>91</b>	<b>63</b>	<b>57</b>	<b>695</b>
Northern Region IAIU		CPS	87	61	61	46	68	83	65	63	77	66	88	60	85	910
		CWS	0	0	0	0	0	0	2	0	0	0	0	0	0	2
		<b>Total</b>	<b>87</b>	<b>61</b>	<b>61</b>	<b>46</b>	<b>68</b>	<b>83</b>	<b>67</b>	<b>63</b>	<b>77</b>	<b>66</b>	<b>88</b>	<b>60</b>	<b>85</b>	<b>912</b>
Southern Region IAIU		CPS	103	75	74	69	65	108	70	54	69	50	78	79	106	1,000
		CWS	0	0	0	0	0	0	0	0	0	0	0	0	0	0
		<b>Total</b>	<b>103</b>	<b>75</b>	<b>74</b>	<b>69</b>	<b>65</b>	<b>108</b>	<b>70</b>	<b>54</b>	<b>69</b>	<b>50</b>	<b>78</b>	<b>79</b>	<b>106</b>	<b>1,000</b>
<b>IAIU CPS Subtotal</b>		<b>CPS</b>	<b>323</b>	<b>250</b>	<b>238</b>	<b>214</b>	<b>240</b>	<b>330</b>	<b>245</b>	<b>199</b>	<b>251</b>	<b>214</b>	<b>317</b>	<b>262</b>	<b>323</b>	<b>3,406</b>
<b>IAIU CWS Subtotal</b>		<b>CWS</b>	<b>0</b>	<b>0</b>	<b>0</b>	<b>0</b>	<b>0</b>	<b>0</b>	<b>2</b>	<b>0</b>	<b>0</b>	<b>0</b>	<b>0</b>	<b>0</b>	<b>2</b>	
<b>IAIU Subtotal</b>		<b>Total</b>	<b>323</b>	<b>250</b>	<b>238</b>	<b>214</b>	<b>240</b>	<b>330</b>	<b>247</b>	<b>199</b>	<b>251</b>	<b>214</b>	<b>317</b>	<b>262</b>	<b>323</b>	<b>3,408</b>
<b>County and IAIU CPS Subtotal</b>		<b>CPS</b>	<b>5,878</b>	<b>4,842</b>	<b>4,244</b>	<b>4,223</b>	<b>4,720</b>	<b>5,526</b>	<b>4,592</b>	<b>4,319</b>	<b>5,038</b>	<b>4,422</b>	<b>5,332</b>	<b>5,013</b>	<b>5,420</b>	<b>63,569</b>
<b>County and IAIU CWS Subtotal</b>		<b>CWS</b>	<b>1,444</b>	<b>1,179</b>	<b>1,169</b>	<b>1,101</b>	<b>1,195</b>	<b>1,425</b>	<b>1,290</b>	<b>1,190</b>	<b>1,327</b>	<b>1,211</b>	<b>1,503</b>	<b>1,358</b>	<b>1,542</b>	<b>16,934</b>
<b>Unable to Determine<sup>(1)</sup></b>		<b>Total</b>	<b>180</b>	<b>156</b>	<b>143</b>	<b>161</b>	<b>183</b>	<b>142</b>	<b>144</b>	<b>115</b>	<b>146</b>	<b>119</b>	<b>155</b>	<b>143</b>	<b>171</b>	<b>1,958</b>
<b>Other Offices</b>		<b>Total</b>	<b>1</b>	<b>0</b>	<b>2</b>	<b>0</b>	<b>4</b>	<b>2</b>	<b>2</b>	<b>2</b>	<b>2</b>	<b>0</b>	<b>4</b>	<b>2</b>	<b>3</b>	<b>24</b>
<b>Grand Total</b>		<b>Total</b>	<b>7,503</b>	<b>6,177</b>	<b>5,558</b>	<b>5,485</b>	<b>6,102</b>	<b>7,095</b>	<b>6,028</b>	<b>5,626</b>	<b>6,513</b>	<b>5,752</b>	<b>6,994</b>	<b>6,516</b>	<b>7,136</b>	<b>82,485</b>

<sup>(1)</sup>CPS Reports or CWS Referrals not assigned to an office through the Assignment Designee, but were assigned to an office for an assessment or investigation.