



## **Child Protection and Permanency**

### **Monthly Screening and Investigation Report June 2015**

Allison Blake, Ph.D., L.S.W.  
Commissioner

July 20, 2015



NEW JERSEY DEPARTMENT OF  
CHILDREN AND FAMILIES

## Table of Contents

Table 1: NJ State Central Registry Activity: Monthly Child Abuse and Neglect Hotline Calls, Intakes and Assignments to Child Protection & Permanency (CP&P) Offices

---

Chart 1: CP&P Annual Trends in Child Protection Services (CPS) Reports and Child Welfare Services (CWS) Referrals

---

Table 2: Assignments to CP&P Offices: CPS Reports and CWS Referrals

---

Table 3: Source of CPS Reports and CWS Referrals

---

Table 4: Monthly Count of CPS Reports and CWS Referrals Assigned to Counties

---

Table 5: Monthly Count of CPS Reports and CWS Referrals Assigned to CP&P Local Offices

---

Table 1: NJ State Central Registry Activity: Monthly Child Abuse and Neglect Hotline Calls, Intakes and Assignments to CP&P Offices<sup>1,2,7</sup>

2014 - 2015	Hotline Call Activity				Intakes Recorded in NJ SPIRIT <sup>6,8</sup>												Assignments to CP&P Offices				
	Total Calls to SCR <sup>3</sup>	Abandon Calls <sup>4</sup>	Average Time to Answer (seconds)	Resulting NJS Intakes <sup>5</sup>	CPS Reports		CWS Referrals		No Action Required (NAR)		Related Information (RI)		Information & Referral (I&R)		Information Only (IO)		CPS Reports		CWS Referrals		Total
					n	%	n	%	n	%	n	%	n	%	n	%	n	%	n	%	
June 2014	13,809	465	27	15,171	4,796	31.6%	1,516	10.0%	402	2.6%	4,028	26.6%	1,625	10.7%	2,804	18.5%	4,796	76.0%	1,517	24.0%	6,313
July 2014	12,308	344	21	13,784	4,202	30.5%	1,247	9.0%	384	2.8%	3,758	27.3%	1,487	10.8%	2,706	19.6%	4,202	77.1%	1,247	22.9%	5,449
August 2014	11,306	277	17	12,610	3,629	28.8%	1,222	9.7%	331	2.6%	3,314	26.3%	1,321	10.5%	2,793	22.1%	3,629	74.8%	1,222	25.2%	4,851
September 2014	13,664	359	22	15,190	4,668	30.7%	1,496	9.8%	393	2.6%	3,949	26.0%	1,792	11.8%	2,892	19.0%	4,668	75.7%	1,498	24.3%	6,166
October 2014	15,268	435	26	16,868	5,510	32.7%	1,584	9.4%	555	3.3%	4,259	25.2%	1,946	11.5%	3,014	17.9%	5,509	77.6%	1,586	22.4%	7,095
November 2014	12,649	391	28	13,938	4,254	30.5%	1,416	10.2%	297	2.1%	3,895	27.9%	1,473	10.6%	2,603	18.7%	4,254	75.0%	1,416	25.0%	5,670
December 2014	13,289	468	29	14,588	4,511	30.9%	1,449	9.9%	303	2.1%	3,888	26.7%	1,620	11.1%	2,817	19.3%	4,509	75.7%	1,447	24.3%	5,956
January 2015	13,991	761	34	15,030	4,549	30.3%	1,390	9.2%	387	2.6%	3,939	26.2%	1,591	10.6%	3,174	21.1%	4,549	76.6%	1,391	23.4%	5,940
February 2015	12,881	537	35	14,010	4,573	32.6%	1,342	9.6%	418	3.0%	3,494	24.9%	1,516	10.8%	2,667	19.0%	4,574	77.3%	1,345	22.7%	5,919
March 2015	14,805	486	30	16,174	5,187	32.1%	1,580	9.8%	363	2.2%	4,021	24.9%	1,811	11.2%	3,212	19.9%	5,187	76.7%	1,580	23.3%	6,767
April 2015	13,698	409	26	15,107	4,967	32.9%	1,381	9.1%	366	2.4%	3,900	25.8%	1,615	10.7%	2,878	19.1%	4,967	78.2%	1,384	21.8%	6,351
May 2015	15,466	583	39	16,769	5,457	32.5%	1,560	9.3%	340	2.0%	4,437	26.5%	1,874	11.2%	3,101	18.5%	5,457	77.8%	1,561	22.2%	7,018
<b>June 2015</b>	<b>13,760</b>	<b>405</b>	<b>29</b>	<b>15,188</b>	<b>4,887</b>	<b>32.2%</b>	<b>1,436</b>	<b>9.5%</b>	<b>373</b>	<b>2.5%</b>	<b>3,981</b>	<b>26.2%</b>	<b>1,659</b>	<b>10.9%</b>	<b>2,853</b>	<b>18.8%</b>	<b>4,887</b>	<b>77.3%</b>	<b>1,436</b>	<b>22.7%</b>	<b>6,323</b>
<b>Monthly Average</b>	<b>13,607</b>	<b>455</b>	<b>28</b>	<b>14,956</b>	<b>4,707</b>	<b>31.5%</b>	<b>1,432</b>	<b>9.6%</b>	<b>378</b>	<b>2.5%</b>	<b>3,913</b>	<b>26.2%</b>	<b>1,641</b>	<b>11.0%</b>	<b>2,886</b>	<b>19.3%</b>	<b>4,707</b>	<b>76.7%</b>	<b>1,433</b>	<b>23.3%</b>	<b>6,140</b>
<b>Overall Total</b>	<b>176,894</b>	<b>5,920</b>		<b>194,427</b>	<b>61,190</b>		<b>18,619</b>		<b>4,912</b>		<b>50,863</b>		<b>21,330</b>		<b>37,514</b>		<b>61,188</b>	<b>76.7%</b>	<b>18,630</b>	<b>23.3%</b>	<b>79,818</b>

<sup>1</sup>Comes from three distinct sources: (1) the Automatic Call Distribution (ACD) phone system; which keeps a count of the number of calls and call routing; (2) Monthly NJSpirit Intakes; which record decision making on calls received by hotline screeners, and (3) NJSpirit extracts of assigned CWS Referrals and CPS Reports.

<sup>2</sup>The number of Intakes, CPS Reports, and CWS Referrals are based on an extract from NJSpirit. Data extracted by the Office of Research, Evaluation, and Reporting on **July 14, 2015** includes all Intakes, CPS Reports, and CWS Referrals received from **June 1, 2015 through June 30, 2015**.

<sup>3</sup>The number calls received through the ACD System that were directed to a screener from any call-in phone number.

<sup>4</sup>The number of calls received through the ACD System that are abandoned either while waiting in queue or while ringing.

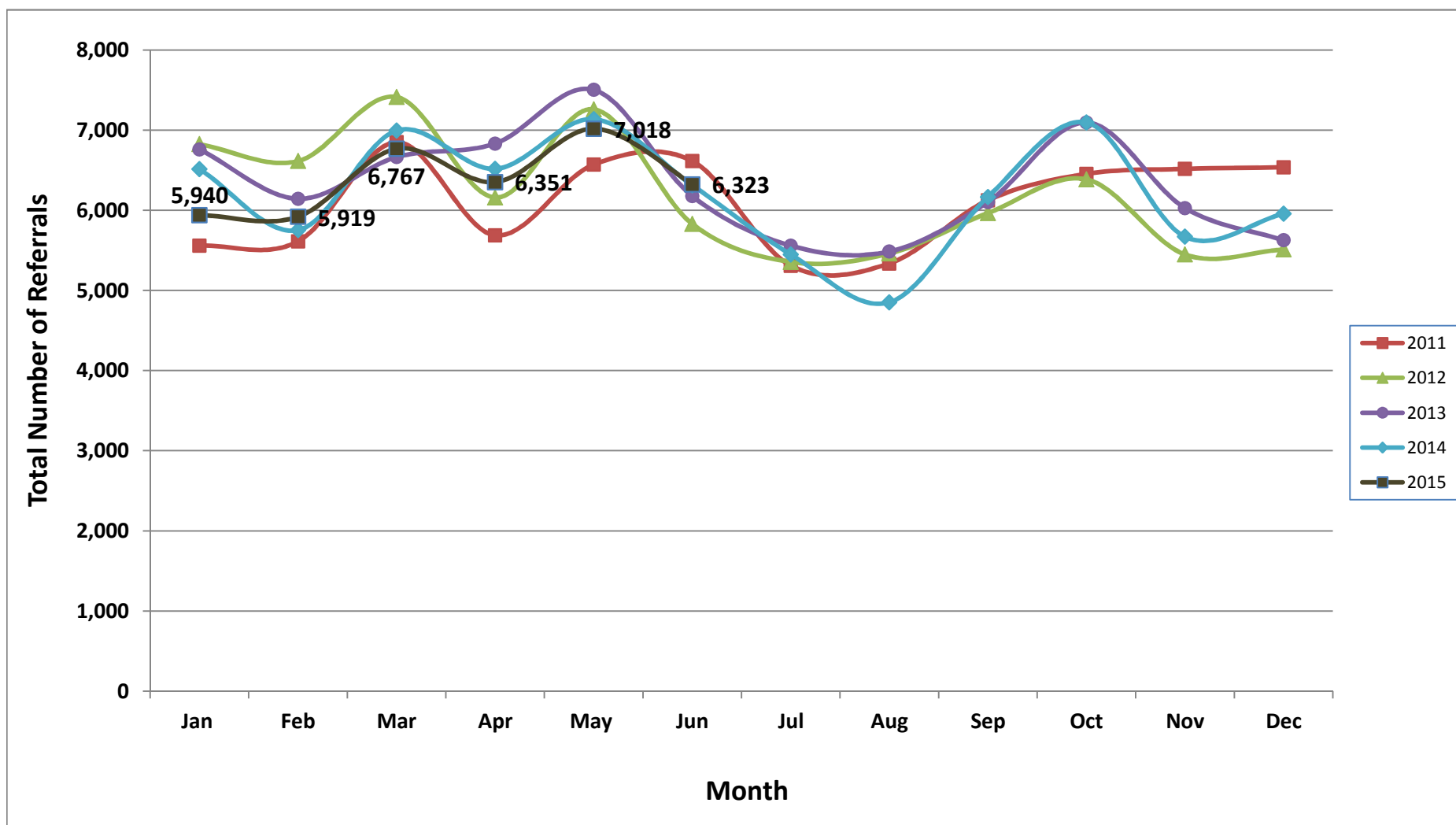
<sup>5</sup>The number of Intakes entered in NJSpirit from the number of calls received.

<sup>6</sup>The number of Intakes recorded in NJSpirit, by type of Intake. There is not a one-to-one relationship between an ACD call and an Intake; multiple calls to State Central Registry (SCR) may result in a single Intake, or one call may result in multiple Intakes.

<sup>7</sup>Intake: The process of documenting: a report of alleged abuse or neglect of a child (CPS); a request for services on behalf of a child, or a referral of a child for services (CWS); a call in which the caller provides additional or clarifying information about a current service case or active investigation (RI); informing a caller of, or referring a caller to, services available from other private or public sources (I&R); a call that requires no action by CP&P (NAR); or a response to a simple inquiry (IO).

<sup>8</sup>NJ SPIRIT: NJ Statewide Protection Investigation and Reporting Information Tool case management system

### CP&P Annual Trends in CPS Reports and CWS Referrals



**Table 2: Assignments to CP&P Offices: CPS Reports and CWS Referrals<sup>1</sup>**

Intake Date <sup>3</sup>		CPS Reports <sup>2</sup>	CWS Referrals <sup>2</sup>	Total Assignments <sup>2</sup>
2010	Jan 2010	5,154	963	6,117
	Feb 2010	4,446	804	5,250
	Mar 2010	6,314	1,147	7,461
	Apr 2010	5,465	1,040	6,505
	May 2010	5,797	1,177	6,974
	Jun 2010	5,734	1,157	6,891
	Jul 2010	4,270	1,017	5,287
	Aug 2010	4,110	1,028	5,138
	Sep 2010	4,922	1,012	5,934
	Oct 2010	5,105	1,136	6,241
	Nov 2010	4,842	1,028	5,870
	Dec 2010	4,472	909	5,381
	<b>Total</b>	<b>60,631</b>	<b>12,418</b>	<b>73,049</b>
2011	Jan 2011	4,616	942	5,558
	Feb 2011	4,672	939	5,611
	Mar 2011	5,701	1,148	6,849
	Apr 2011	4,682	1,005	5,687
	May 2011	5,362	1,207	6,569
	Jun 2011	5,299	1,315	6,614
	Jul 2011	4,200	1,108	5,308
	Aug 2011	4,170	1,166	5,336
	Sep 2011	4,872	1,253	6,125
	Oct 2011	5,322	1,132	6,454
	Nov 2011	5,220	1,296	6,516
	Dec 2011	5,363	1,173	6,536
	<b>Total</b>	<b>59,479</b>	<b>13,684</b>	<b>73,163</b>
2012	Jan 2012	5,530	1,294	6,824
	Feb 2012	5,358	1,255	6,613
	Mar 2012	5,985	1,428	7,413
	Apr 2012	4,899	1,259	6,158
	May 2012	5,874	1,385	7,259
	Jun 2012	4,640	1,190	5,830
	Jul 2012	4,254	1,101	5,355
	Aug 2012	4,325	1,135	5,460
	Sep 2012	4,769	1,196	5,965
	Oct 2012	5,178	1,207	6,385
	Nov 2012	4,310	1,138	5,448
	Dec 2012	4,394	1,116	5,510
	<b>Total</b>	<b>59,516</b>	<b>14,704</b>	<b>74,220</b>

**Table 2: Assignments to CP&P Offices: CPS Reports and CWS Referrals<sup>1</sup>**

Intake Date <sup>3</sup>		CPS Reports <sup>2</sup>	CWS Referrals <sup>2</sup>	Total Assignments <sup>2</sup>
2013	Jan 2013	5,464	1,296	6,760
	Feb 2013	4,966	1,177	6,143
	Mar 2013	5,355	1,309	6,664
	Apr 2013	5,430	1,402	6,832
	May 2013	5,993	1,510	7,503
	Jun 2013	4,947	1,230	6,177
	Jul 2013	4,330	1,228	5,558
	Aug 2013	4,330	1,155	5,485
	Sep 2013	4,851	1,251	6,102
	Oct 2013	5,614	1,481	7,095
	Nov 2013	4,694	1,334	6,028
	Dec 2013	4,397	1,229	5,626
	<b>Total</b>	<b>60,371</b>	<b>15,602</b>	<b>75,973</b>
2014	Jan 2014	5,097	1,416	6,513
	Feb 2014	4,457	1,295	5,752
	Mar 2014	5,408	1,586	6,994
	Apr 2014	5,049	1,467	6,516
	May 2014	5,501	1,635	7,136
	Jun 2014	4,796	1,517	6,313
	Jul 2014	4,202	1,247	5,449
	Aug 2014	3,629	1,222	4,851
	Sep 2014	4,668	1,498	6,166
	Oct 2014	5,509	1,586	7,095
	Nov 2014	4,254	1,416	5,670
	Dec 2014	4,509	1,447	5,956
	<b>Total</b>	<b>57,079</b>	<b>17,332</b>	<b>74,411</b>
2015	Jan 2015	4,549	1,391	5,940
	Feb 2015	4,574	1,345	5,919
	Mar 2015	5,187	1,580	6,767
	Apr 2015	4,967	1,384	6,351
	May 2015	5,457	1,561	7,018
	June 2015	4,887	1,436	6,323
	<b>Total</b>	<b>29,621</b>	<b>8,697</b>	<b>31,995</b>
<b>Grand Total</b>		<b>326,697</b>	<b>82,437</b>	<b>402,811</b>

<sup>1</sup>Source of Data: NJ SPIRIT

<sup>2</sup>A CPS Report or a CWS Referral may include multiple children in a family, with one or more allegation or request for services. In these cases, each CPS Report or CWS Referral is counted once - the CPS Report or the CWS Referral is the unit of analysis rather than the child.

<sup>3</sup>Prior to January 2014, the number of CPS Reports and CWS Referrals was based on the type of assignment of the CPS Report or CWS Referral. Beginning in January 2014, the number of CPS Reports and CWS Referrals is based on the number of CPS Reports and CWS Referrals received.

**Table 3: Source of CPS Reports and CWS Referrals**

	Source	May 2014	Jun 2014	Jul 2014	Aug 2014	Sep 2014	Oct 2014	Nov 2014	Dec 2014	Jan 2015	Feb 2015	Mar 2015	Apr 2015	May 2015	Jun 2015		13 Month Total	
CPS Reports and CWS Referrals	School Staff	1,861	1,216	200	90	1,200	1,935	1,395	1,481	1,504	1,629	1,894	1,487	1,868	1,166	18%	18,926	22%
	Healthcare Provider	818	806	860	704	774	824	735	774	701	720	825	861	812	808	13%	11,022	13%
	Law Enforcement	994	955	961	934	922	898	835	820	870	783	933	925	1056	1,093	17%	12,979	15%
	Government Agency	504	472	480	429	470	474	350	402	362	377	465	445	370	422	7%	6,022	7%
	Parent	666	554	593	549	591	603	517	520	510	506	539	493	578	581	9%	7,800	9%
	Relative/Friend/Neighbor	577	596	688	586	553	568	418	406	468	393	491	484	540	546	9%	7,314	8%
	Anonymous	741	723	609	640	661	772	614	659	612	607	687	641	802	725	11%	9,493	11%
	CP&P	128	148	139	111	119	113	94	113	109	120	110	117	103	125	2%	1,649	2%
	Court/Legal	116	120	138	122	111	129	78	114	118	95	108	116	128	148	2%	1,641	2%
	Community Group/Individual	269	241	274	241	271	270	209	211	233	263	260	295	266	232	4%	3,535	4%
	Facility Staff (incl Correctional Facility)	69	96	94	88	72	92	82	89	107	79	71	106	76	89	1%	1,210	1%
	Child (Self)	44	56	52	38	63	47	42	46	40	35	39	37	49	41	1%	629	1%
	Other	334	318	350	312	342	354	293	308	291	298	328	332	353	330	5%	4,543	5%
	Daycare/Babysitter	15	12	11	7	17	16	8	13	15	14	17	12	17	17	0%	191	0%
	<b>Total</b>		<b>7,136</b>	<b>6,313</b>	<b>5,449</b>	<b>4,851</b>	<b>6,166</b>	<b>7,095</b>	<b>5,670</b>	<b>5,956</b>	<b>5,940</b>	<b>5,919</b>	<b>6,767</b>	<b>6,351</b>	<b>7,018</b>	<b>6,323</b>		<b>86,954</b>

**Table 4: Monthly Count of CPS Reports and CWS Referrals Assigned to Counties**

County														Average # of Assignments the Last 12 Months	May 15 to Jun 15 Numerical Difference
	Jun 2014	Jul 2014	Aug 2014	Sep 2014	Oct 2014	Nov 2014	Dec 2014	Jan 2015	Feb 2015	Mar 2015	Apr 2015	May 2015	Jun 2015		
Atlantic	234	229	221	233	292	234	245	233	210	269	277	275	239	246	-36
Bergen	295	228	235	337	392	328	323	323	324	386	335	382	296	324	-86
Burlington	279	242	248	251	335	238	277	269	305	285	319	322	274	280	-48
Camden	528	490	400	537	594	502	464	487	505	534	506	551	552	510	1
Cape May	64	96	92	95	87	59	71	82	68	93	85	80	69	81	-11
Cumberland	210	218	147	214	224	189	207	213	201	253	217	249	217	212	-32
Essex	632	536	516	630	725	579	622	617	597	769	699	779	642	643	-137
Gloucester	295	254	206	261	300	228	232	238	223	276	288	244	259	251	15
Hudson	466	338	275	446	532	349	398	414	396	442	382	546	471	416	-75
Hunterdon	41	57	39	50	47	33	65	30	52	45	50	51	47	47	-4
209	279	246	203	261	294	246	230	244	209	264	244	249	262	246	13
Middlesex	400	336	284	413	458	341	418	424	464	479	418	471	423	411	-48
Monmouth	388	293	334	375	413	346	354	325	373	440	374	378	346	363	-32
Morris	214	198	195	223	237	227	183	237	190	224	208	246	233	217	-13
Ocean	416	372	316	384	456	387	381	374	364	398	402	418	388	387	-30
Passaic	402	340	299	384	427	382	417	361	387	443	389	534	412	398	-122
Salem	75	76	82	101	96	50	66	87	60	71	96	105	81	81	-24
Somerset	180	125	119	139	152	134	132	126	131	153	154	178	163	142	-15
Sussex	92	96	75	87	84	96	91	86	85	109	104	97	112	94	15
Union	303	245	204	286	354	311	288	322	278	360	307	299	305	297	6
Warren	99	77	73	93	113	87	102	97	119	92	101	117	102	98	-15
<b>County Subtotals</b>	<b>5,892</b>	<b>5,092</b>	<b>4,563</b>	<b>5,800</b>	<b>6,612</b>	<b>5,346</b>	<b>5,566</b>	<b>5,589</b>	<b>5,541</b>	<b>6,385</b>	<b>5,955</b>	<b>6,571</b>	<b>5,893</b>	<b>5,743</b>	<b>-678</b>
Central Region IAIU	60	54	40	55	70	54	61	48	50	50	51	54	54	53	0
Metro Region IAIU	69	43	26	47	70	45	49	53	58	67	54	70	66	54	-4
Northern Region IAIU	59	50	41	58	80	47	67	62	61	73	70	80	65	63	-15
Southern Region IAIU	74	61	52	64	85	59	89	60	68	68	78	97	88	72	-9
<b>IAIU Subtotals</b>	<b>262</b>	<b>208</b>	<b>159</b>	<b>224</b>	<b>305</b>	<b>205</b>	<b>266</b>	<b>223</b>	<b>237</b>	<b>258</b>	<b>253</b>	<b>301</b>	<b>273</b>	<b>243</b>	<b>-28</b>
<b>Unable to Determine<sup>1</sup></b>	<b>156</b>	<b>149</b>	<b>129</b>	<b>141</b>	<b>174</b>	<b>117</b>	<b>123</b>	<b>127</b>	<b>138</b>	<b>118</b>	<b>141</b>	<b>144</b>	<b>153</b>	<b>138</b>	<b>9</b>
<b>Other Offices</b>	<b>3</b>	<b>0</b>	<b>0</b>	<b>1</b>	<b>4</b>	<b>2</b>	<b>1</b>	<b>1</b>	<b>3</b>	<b>6</b>	<b>2</b>	<b>2</b>	<b>4</b>	<b>2</b>	<b>2</b>
<b>Grand Total</b>	<b>6,313</b>	<b>5,449</b>	<b>4,851</b>	<b>6,166</b>	<b>7,095</b>	<b>5,670</b>	<b>5,956</b>	<b>5,940</b>	<b>5,919</b>	<b>6,767</b>	<b>6,351</b>	<b>7,018</b>	<b>6,323</b>	<b>6,125</b>	<b>-695</b>

<sup>1</sup>CPS Reports or CWS Referrals not assigned to an office through the Assignment Designee, but were assigned to an office for an assessment or investigation.





**Table 5: Monthly Count of CPS Reports and CWS Referrals Assigned to CP&P Local Offices**

County	Local Office	Type of Referral														Total
			Jun 2014	Jul 2014	Aug 2014	Sep 2014	Oct 2014	Nov 2014	Dec 2014	Jan 2015	Feb 2015	Mar 2015	Apr 2015	May 2015	Jun 2015	
<b>ATLANTIC</b>	Atlantic East	CPS	94	104	98	108	125	100	120	106	77	116	134	121	115	1,418
		CWS	27	23	32	23	35	36	24	29	26	32	32	38	24	381
		<b>Total</b>	<b>121</b>	<b>127</b>	<b>130</b>	<b>131</b>	<b>160</b>	<b>136</b>	<b>144</b>	<b>135</b>	<b>103</b>	<b>148</b>	<b>166</b>	<b>159</b>	<b>139</b>	<b>1,799</b>
	Atlantic West	CPS	89	75	71	82	103	75	77	76	85	101	86	96	81	1,097
		CWS	24	27	20	20	29	23	24	22	22	20	25	20	19	295
		<b>Total</b>	<b>113</b>	<b>102</b>	<b>91</b>	<b>102</b>	<b>132</b>	<b>98</b>	<b>101</b>	<b>98</b>	<b>107</b>	<b>121</b>	<b>111</b>	<b>116</b>	<b>100</b>	<b>1,392</b>
	County Totals	CPS	183	179	169	190	228	175	197	182	162	217	220	217	196	2,515
		CWS	51	50	52	43	64	59	48	51	48	52	57	58	43	676
		<b>Total</b>	<b>234</b>	<b>229</b>	<b>221</b>	<b>233</b>	<b>292</b>	<b>234</b>	<b>245</b>	<b>233</b>	<b>210</b>	<b>269</b>	<b>277</b>	<b>275</b>	<b>239</b>	<b>3,191</b>
<b>BERGEN</b>	Bergen Central	CPS	97	68	67	107	111	109	94	97	94	103	110	123	102	1,282
		CWS	31	23	24	38	51	49	39	39	32	37	36	34	32	465
		<b>Total</b>	<b>128</b>	<b>91</b>	<b>91</b>	<b>145</b>	<b>162</b>	<b>158</b>	<b>133</b>	<b>136</b>	<b>126</b>	<b>140</b>	<b>146</b>	<b>157</b>	<b>134</b>	<b>1,747</b>
	Bergen South	CPS	129	99	102	142	181	124	136	144	144	183	133	175	120	1,812
		CWS	38	38	42	50	49	46	54	43	54	63	56	50	42	625
		<b>Total</b>	<b>167</b>	<b>137</b>	<b>144</b>	<b>192</b>	<b>230</b>	<b>170</b>	<b>190</b>	<b>187</b>	<b>198</b>	<b>246</b>	<b>189</b>	<b>225</b>	<b>162</b>	<b>2,437</b>
	County Totals	CPS	226	167	169	249	292	233	230	241	238	286	243	298	222	3,094
		CWS	69	61	66	88	100	95	93	82	86	100	92	84	74	1,090
		<b>Total</b>	<b>295</b>	<b>228</b>	<b>235</b>	<b>337</b>	<b>392</b>	<b>328</b>	<b>323</b>	<b>323</b>	<b>324</b>	<b>386</b>	<b>335</b>	<b>382</b>	<b>296</b>	<b>4,184</b>
<b>BURLINGTON</b>	Burlington East	CPS	103	98	89	88	115	107	110	110	116	105	138	125	99	1,403
		CWS	32	27	35	32	38	25	30	25	33	29	28	37	26	397
		<b>Total</b>	<b>135</b>	<b>125</b>	<b>124</b>	<b>120</b>	<b>153</b>	<b>132</b>	<b>140</b>	<b>135</b>	<b>149</b>	<b>134</b>	<b>166</b>	<b>162</b>	<b>125</b>	<b>1,800</b>
	Burlington West	CPS	111	94	90	89	145	80	100	104	121	119	117	122	115	1,407
		CWS	33	23	34	42	37	26	37	30	35	32	36	38	34	437
		<b>Total</b>	<b>144</b>	<b>117</b>	<b>124</b>	<b>131</b>	<b>182</b>	<b>106</b>	<b>137</b>	<b>134</b>	<b>156</b>	<b>151</b>	<b>153</b>	<b>160</b>	<b>149</b>	<b>1,844</b>
	County Totals	CPS	214	192	179	177	260	187	210	214	237	224	255	247	214	2,810
		CWS	65	50	69	74	75	51	67	55	68	61	64	75	60	834
		<b>Total</b>	<b>279</b>	<b>242</b>	<b>248</b>	<b>251</b>	<b>335</b>	<b>238</b>	<b>277</b>	<b>269</b>	<b>305</b>	<b>285</b>	<b>319</b>	<b>322</b>	<b>274</b>	<b>3,644</b>
<b>CAMDEN</b>	Camden Central	CPS	127	111	97	109	151	100	103	123	123	127	115	122	121	1,529
		CWS	39	34	30	35	26	28	23	35	28	23	38	29	27	395
		<b>Total</b>	<b>166</b>	<b>145</b>	<b>127</b>	<b>144</b>	<b>177</b>	<b>128</b>	<b>126</b>	<b>158</b>	<b>151</b>	<b>150</b>	<b>153</b>	<b>151</b>	<b>148</b>	<b>1,924</b>
	Camden East	CPS	101	94	82	92	116	91	93	74	93	89	102	119	125	1,271
		CWS	38	27	18	46	37	39	24	31	19	30	31	30	30	400
		<b>Total</b>	<b>139</b>	<b>121</b>	<b>100</b>	<b>138</b>	<b>153</b>	<b>130</b>	<b>117</b>	<b>105</b>	<b>112</b>	<b>119</b>	<b>133</b>	<b>149</b>	<b>155</b>	<b>1,671</b>
	Camden North	CPS	104	91	71	95	122	105	73	89	85	106	89	101	116	1,247
		CWS	31	27	15	25	23	28	33	31	29	33	31	33	36	375
		<b>Total</b>	<b>135</b>	<b>118</b>	<b>86</b>	<b>120</b>	<b>145</b>	<b>133</b>	<b>106</b>	<b>120</b>	<b>114</b>	<b>139</b>	<b>120</b>	<b>134</b>	<b>152</b>	<b>1,622</b>
	Camden South	CPS	62	82	64	94	92	88	84	78	96	97	88	92	73	1,090
		CWS	26	24	23	41	27	23	31	26	32	29	12	25	24	343
		<b>Total</b>	<b>88</b>	<b>106</b>	<b>87</b>	<b>135</b>	<b>119</b>	<b>111</b>	<b>115</b>	<b>104</b>	<b>128</b>	<b>126</b>	<b>100</b>	<b>117</b>	<b>97</b>	<b>1,433</b>
	County Totals	CPS	394	378	314	390	481	384	353	364	397	419	394	434	435	5,137
		CWS	134	112	86	147	113	118	111	123	108	115	112	117	117	1,513
		<b>Total</b>	<b>528</b>	<b>490</b>	<b>400</b>	<b>537</b>	<b>594</b>	<b>502</b>	<b>464</b>	<b>487</b>	<b>505</b>	<b>534</b>	<b>506</b>	<b>551</b>	<b>552</b>	<b>6,650</b>
	<b>CAPE MAY</b>	Cape May	CPS	45	70	76	74	73	47	54	63	54	78	63	66	57
CWS			19	26	16	21	14	12	17	19	14	15	22	14	12	221
<b>Total</b>			<b>64</b>	<b>96</b>	<b>92</b>	<b>95</b>	<b>87</b>	<b>59</b>	<b>71</b>	<b>82</b>	<b>68</b>	<b>69</b>	<b>85</b>	<b>80</b>	<b>69</b>	<b>1,041</b>
County Totals		CPS	45	70	76	74	73	47	54	63	54	78	63	66	57	763
		CWS	19	26	16	21	14	12	17	19	14	15	22	14	12	209
		<b>Total</b>	<b>64</b>	<b>96</b>	<b>92</b>	<b>95</b>	<b>87</b>	<b>59</b>	<b>71</b>	<b>82</b>	<b>68</b>	<b>68</b>	<b>93</b>	<b>85</b>	<b>80</b>	<b>972</b>
<b>CUMBERLAND</b>	Cumberland East	CPS	57	67	30	55	69	56	43	51	52	63	50	70	66	729
		CWS	22	5	18	18	17	14	22	16	16	15	12	25	19	219
		<b>Total</b>	<b>79</b>	<b>72</b>	<b>48</b>	<b>73</b>	<b>86</b>	<b>70</b>	<b>65</b>	<b>67</b>	<b>68</b>	<b>78</b>	<b>62</b>	<b>95</b>	<b>85</b>	<b>948</b>
	Cumberland West	CPS	109	121	70	116	102	91	107	121	105	143	117	123	99	1,424
		CWS	22	25	29	25	36	28	35	25	28	32	38	31	33	387
		<b>Total</b>	<b>131</b>	<b>146</b>	<b>99</b>	<b>141</b>	<b>138</b>	<b>119</b>	<b>142</b>	<b>146</b>	<b>133</b>	<b>175</b>	<b>155</b>	<b>154</b>	<b>132</b>	<b>1,811</b>
	County Totals	CPS	166	188	100	171	171	147	150	172	157	206	167	193	165	2,153
		CWS	44	30	47	43	53	42	57	41	44	47	50	56	52	606
		<b>Total</b>	<b>210</b>	<b>218</b>	<b>147</b>	<b>214</b>	<b>224</b>	<b>189</b>	<b>207</b>	<b>213</b>	<b>201</b>	<b>253</b>	<b>217</b>	<b>249</b>	<b>217</b>	<b>2,759</b>

Data in this report is preliminary and may differ from any final report. This report is produced to ensure continuous quality improvement throughout DCF.



**Table 5: Monthly Count of CPS Reports and CWS Referrals Assigned to CP&P Local Offices**

County	Local Office	Type of Referral														Total
			Jun 2014	Jul 2014	Aug 2014	Sep 2014	Oct 2014	Nov 2014	Dec 2014	Jan 2015	Feb 2015	Mar 2015	Apr 2015	May 2015	Jun 2015	
ESSEX	Essex Central	CPS	98	76	67	84	104	73	77	97	68	92	105	118	81	1,140
		CWS	28	28	20	30	42	36	36	34	31	25	32	36	27	405
		Total	126	104	87	114	146	109	113	131	99	117	137	154	108	1,545
	Essex North	CPS	56	37	43	68	65	61	59	50	48	63	78	75	67	770
		CWS	26	13	14	21	25	20	16	14	23	26	20	20	23	261
		Total	82	50	57	89	90	81	75	64	71	89	98	95	90	1,031
	Essex South	CPS	66	42	55	50	61	48	61	70	70	95	75	71	51	815
		CWS	16	23	25	31	22	30	29	24	26	22	17	16	20	301
		Total	82	65	80	81	83	78	90	94	96	117	92	87	71	1,116
	Newark Center City	CPS	80	73	62	83	90	68	91	75	74	110	90	106	72	1,074
		CWS	28	19	30	33	40	28	24	19	21	33	15	40	27	357
		Total	108	92	92	116	130	96	115	94	95	143	105	146	99	1,431
	Newark Northeast	CPS	74	83	70	78	97	80	68	74	101	107	106	94	108	1,140
		CWS	41	22	25	27	28	25	40	36	27	45	27	34	28	405
		Total	115	105	95	105	125	105	108	110	128	152	133	128	136	1,545
Newark South	CPS	88	91	69	93	124	80	88	94	81	120	97	127	102	1,254	
	CWS	31	29	36	32	27	30	33	30	26	31	37	42	36	420	
	Total	119	120	105	125	151	110	121	124	107	151	134	169	138	1,674	
County Totals	CPS	462	402	366	456	541	410	444	460	442	587	551	591	481	6,193	
	CWS	170	134	150	174	184	169	178	157	154	182	148	188	161	2,149	
	Total	632	536	516	630	725	579	622	617	596	769	699	779	642	8,342	
GLOUCESTER	Gloucester East	CPS	112	94	73	90	101	85	85	95	96	110	114	88	85	1,228
		CWS	22	21	25	28	37	39	28	18	20	29	34	18	25	344
		Total	134	115	98	118	138	124	113	113	116	139	148	106	110	1,572
	Gloucester West	CPS	125	103	82	119	126	74	96	96	80	113	115	114	121	1,364
		CWS	36	36	26	24	36	30	23	29	27	24	25	24	28	368
		Total	161	139	108	143	162	104	119	125	107	137	140	138	149	1,732
	County Totals	CPS	237	197	155	209	227	159	181	191	176	223	229	202	206	2,592
		CWS	58	57	51	52	73	69	51	47	47	53	59	42	53	712
Total	295	254	206	261	300	228	232	238	223	276	288	244	259	3,304		
HUDSON	Hudson Central	CPS	84	74	58	76	94	49	56	73	84	90	89	112	88	1,027
		CWS	19	28	28	34	33	31	29	27	25	30	30	22	30	366
		Total	103	102	86	110	127	80	85	100	109	120	119	134	118	1,393
	Hudson North	CPS	98	48	34	90	99	53	74	69	70	73	65	107	96	976
		CWS	32	19	17	25	33	23	26	30	22	29	19	28	27	330
		Total	130	67	51	115	132	76	100	99	92	102	84	135	123	1,306
	Hudson South	CPS	88	66	43	88	95	59	88	77	80	87	70	103	93	1,037
		CWS	29	19	31	21	36	30	17	23	32	31	23	46	29	367
		Total	117	85	74	109	131	89	105	100	112	118	93	149	122	1,404
	Hudson West	CPS	92	63	43	87	113	85	81	86	65	77	71	103	77	1,043
CWS		24	21	21	25	29	19	27	29	18	25	15	25	31	309	
Total		116	84	64	112	142	104	108	115	83	102	86	128	108	1,352	
County Totals	CPS	362	251	178	341	401	246	299	305	299	327	295	425	354	4,083	
	CWS	104	87	97	105	131	103	99	109	97	115	87	121	117	1,372	
Total	466	338	275	446	532	349	398	414	396	442	382	546	471	5,455		
HUNTERDON	Hunterdon	CPS	33	44	32	34	38	23	46	19	39	28	33	32	32	433
		CWS	8	13	7	16	9	10	19	11	13	17	17	19	15	174
		Total	41	57	39	50	47	33	65	30	52	45	50	51	47	607
	County Totals	CPS	33	44	32	34	38	23	46	19	39	28	33	32	32	433
		CWS	8	13	7	16	9	10	19	11	13	17	17	19	15	174
Total	41	57	39	50	47	33	65	30	52	45	50	51	47	607		
MERCER	Mercer North	CPS	102	87	79	89	123	96	81	97	78	82	98	94	92	1,198
		CWS	38	25	27	35	28	42	30	30	29	43	23	27	25	402
		Total	140	112	106	124	151	138	111	127	107	125	121	121	117	1,600
	Mercer South	CPS	109	106	74	112	117	88	96	87	75	110	94	96	103	1,267
		CWS	30	28	23	25	26	20	23	30	27	29	29	32	42	364
		Total	139	134	97	137	143	108	119	117	102	139	123	128	145	1,631
	County Totals	CPS	211	193	153	201	240	184	177	184	153	192	192	190	195	2,465
CWS		68	53	50	60	54	62	53	60	56	72	52	59	67	766	
Total	279	246	203	261	294	246	230	244	209	264	244	249	262	3,231		

Data in this report is preliminary and may differ from any final report. This report is produced to ensure continuous quality improvement throughout DCF.





**Table 5: Monthly Count of CPS Reports and CWS Referrals Assigned to CP&P Local Offices**

County	Local Office	Type of Referral													Total		
			Jun 2014	Jul 2014	Aug 2014	Sep 2014	Oct 2014	Nov 2014	Dec 2014	Jan 2015	Feb 2015	Mar 2015	Apr 2015	May 2015		Jun 2015	
SUSSEX	Sussex	CPS	71	73	55	59	60	71	70	66	64	80	84	74	77	904	
		CWS	21	23	20	28	24	25	21	20	21	29	20	23	35	310	
		<b>Total</b>	<b>92</b>	<b>96</b>	<b>75</b>	<b>87</b>	<b>84</b>	<b>96</b>	<b>91</b>	<b>86</b>	<b>85</b>	<b>109</b>	<b>104</b>	<b>97</b>	<b>112</b>	<b>1,214</b>	
	County Totals	CPS	71	73	55	59	60	71	70	66	64	80	84	74	77	904	
		CWS	21	23	20	28	24	25	21	20	21	29	20	23	35	310	
		<b>Total</b>	<b>92</b>	<b>96</b>	<b>75</b>	<b>87</b>	<b>84</b>	<b>96</b>	<b>91</b>	<b>86</b>	<b>85</b>	<b>109</b>	<b>104</b>	<b>97</b>	<b>112</b>	<b>1,214</b>	
UNION	Union Central	CPS	73	59	36	63	94	81	67	91	75	86	81	85	83	974	
		CWS	21	24	20	21	37	17	15	21	19	30	21	19	20	285	
		<b>Total</b>	<b>94</b>	<b>83</b>	<b>56</b>	<b>84</b>	<b>131</b>	<b>98</b>	<b>82</b>	<b>112</b>	<b>94</b>	<b>116</b>	<b>102</b>	<b>104</b>	<b>103</b>	<b>1,259</b>	
	Union East	CPS	92	63	49	69	94	83	82	72	73	92	85	69	80	1,003	
		CWS	38	26	26	28	26	28	27	34	24	43	27	33	32	392	
		<b>Total</b>	<b>130</b>	<b>89</b>	<b>75</b>	<b>97</b>	<b>120</b>	<b>111</b>	<b>109</b>	<b>106</b>	<b>97</b>	<b>135</b>	<b>112</b>	<b>102</b>	<b>112</b>	<b>1,395</b>	
	Union West	CPS	59	47	58	83	78	80	69	75	66	81	64	71	62	893	
		CWS	20	26	15	22	25	22	28	29	21	28	29	22	28	315	
		<b>Total</b>	<b>79</b>	<b>73</b>	<b>73</b>	<b>105</b>	<b>103</b>	<b>102</b>	<b>97</b>	<b>104</b>	<b>87</b>	<b>109</b>	<b>93</b>	<b>93</b>	<b>90</b>	<b>1,208</b>	
	County Totals	CPS	224	169	143	215	266	244	218	238	214	259	230	225	225	2,870	
		CWS	79	76	61	71	88	67	70	84	64	101	77	74	80	992	
		<b>Total</b>	<b>303</b>	<b>245</b>	<b>204</b>	<b>286</b>	<b>354</b>	<b>311</b>	<b>288</b>	<b>322</b>	<b>278</b>	<b>360</b>	<b>307</b>	<b>299</b>	<b>305</b>	<b>3,862</b>	
	WARREN	Warren	CPS	72	66	54	72	96	64	74	68	87	66	82	84	78	963
			CWS	27	11	19	21	17	23	28	29	32	26	19	33	24	309
			<b>Total</b>	<b>99</b>	<b>77</b>	<b>73</b>	<b>93</b>	<b>113</b>	<b>87</b>	<b>102</b>	<b>97</b>	<b>119</b>	<b>92</b>	<b>101</b>	<b>117</b>	<b>102</b>	<b>1,272</b>
County Totals		CPS	72	66	54	72	96	64	74	68	87	66	82	84	78	963	
		CWS	27	11	19	21	17	23	28	29	32	26	19	33	24	309	
		<b>Total</b>	<b>99</b>	<b>77</b>	<b>73</b>	<b>93</b>	<b>113</b>	<b>87</b>	<b>102</b>	<b>97</b>	<b>119</b>	<b>92</b>	<b>101</b>	<b>117</b>	<b>102</b>	<b>1,272</b>	
<b>County CPS Referral Total</b>	<b>CPS</b>	<b>4,472</b>	<b>3,922</b>	<b>3,406</b>	<b>4,387</b>	<b>5,122</b>	<b>3,973</b>	<b>4,164</b>	<b>4,252</b>	<b>4,250</b>	<b>4,849</b>	<b>4,614</b>	<b>5,060</b>	<b>4,508</b>	<b>56,979</b>		
<b>County CWS Referral Total</b>	<b>CWS</b>	<b>1,420</b>	<b>1,170</b>	<b>1,157</b>	<b>1,413</b>	<b>1,490</b>	<b>1,373</b>	<b>1,402</b>	<b>1,337</b>	<b>1,290</b>	<b>1,536</b>	<b>1,341</b>	<b>1,511</b>	<b>1,385</b>	<b>17,825</b>		
<b>County Referral Total</b>	<b>Total</b>	<b>5,892</b>	<b>5,092</b>	<b>4,563</b>	<b>5,800</b>	<b>6,612</b>	<b>5,346</b>	<b>5,566</b>	<b>5,589</b>	<b>5,540</b>	<b>6,385</b>	<b>5,955</b>	<b>6,571</b>	<b>5,893</b>	<b>74,804</b>		
Central Region IAIU	CPS	60	54	40	55	70	54	61	48	50	50	51	54	54	701		
	CWS	0	0	0	0	0	0	0	0	0	0	0	0	0	0		
	<b>Total</b>	<b>60</b>	<b>54</b>	<b>40</b>	<b>55</b>	<b>70</b>	<b>54</b>	<b>61</b>	<b>48</b>	<b>50</b>	<b>50</b>	<b>51</b>	<b>54</b>	<b>54</b>	<b>701</b>		
Metro Region IAIU	CPS	69	43	25	47	70	45	49	53	59	67	54	70	66	717		
	CWS	0	0	1	0	1	0	0	0	0	0	0	0	0	2		
	<b>Total</b>	<b>69</b>	<b>43</b>	<b>26</b>	<b>47</b>	<b>71</b>	<b>45</b>	<b>49</b>	<b>53</b>	<b>59</b>	<b>67</b>	<b>54</b>	<b>70</b>	<b>66</b>	<b>719</b>		
Northern Region IAIU	CPS	59	50	41	58	80	47	67	62	61	73	70	80	65	813		
	CWS	0	0	0	0	0	0	0	0	0	0	0	0	0	0		
	<b>Total</b>	<b>59</b>	<b>50</b>	<b>41</b>	<b>58</b>	<b>80</b>	<b>47</b>	<b>67</b>	<b>62</b>	<b>61</b>	<b>73</b>	<b>70</b>	<b>80</b>	<b>65</b>	<b>813</b>		
Southern Region IAIU	CPS	74	61	52	64	85	59	89	60	68	68	78	97	88	943		
	CWS	0	0	0	0	0	0	0	0	0	0	0	0	0	0		
	<b>Total</b>	<b>74</b>	<b>61</b>	<b>52</b>	<b>64</b>	<b>85</b>	<b>59</b>	<b>89</b>	<b>60</b>	<b>68</b>	<b>68</b>	<b>78</b>	<b>97</b>	<b>88</b>	<b>943</b>		
<b>IAIU CPS Subtotal</b>	<b>CPS</b>	<b>262</b>	<b>208</b>	<b>158</b>	<b>224</b>	<b>305</b>	<b>205</b>	<b>266</b>	<b>223</b>	<b>238</b>	<b>258</b>	<b>253</b>	<b>301</b>	<b>273</b>	<b>3,174</b>		
<b>IAIU CWS Subtotal</b>	<b>CWS</b>	<b>0</b>	<b>0</b>	<b>1</b>	<b>1</b>	<b>0</b>	<b>0</b>	<b>0</b>	<b>0</b>	<b>0</b>	<b>0</b>	<b>0</b>	<b>0</b>	<b>0</b>	<b>2</b>		
<b>IAIU Subtotal</b>	<b>Total</b>	<b>262</b>	<b>208</b>	<b>159</b>	<b>225</b>	<b>305</b>	<b>205</b>	<b>266</b>	<b>223</b>	<b>238</b>	<b>258</b>	<b>253</b>	<b>301</b>	<b>273</b>	<b>3,176</b>		
<b>County and IAIU CPS Subtotal</b>	<b>CPS</b>	<b>4,734</b>	<b>4,130</b>	<b>3,564</b>	<b>4,611</b>	<b>5,427</b>	<b>4,178</b>	<b>4,430</b>	<b>4,475</b>	<b>4,488</b>	<b>5,107</b>	<b>4,867</b>	<b>5,361</b>	<b>4,781</b>	<b>60,153</b>		
<b>County and IAIU CWS Subtotal</b>	<b>CWS</b>	<b>1,420</b>	<b>1,170</b>	<b>1,158</b>	<b>1,414</b>	<b>1,490</b>	<b>1,373</b>	<b>1,402</b>	<b>1,337</b>	<b>1,290</b>	<b>1,536</b>	<b>1,341</b>	<b>1,511</b>	<b>1,385</b>	<b>17,827</b>		
<b>Unable to Determine<sup>(1)</sup></b>	<b>Total</b>	<b>156</b>	<b>149</b>	<b>129</b>	<b>141</b>	<b>174</b>	<b>117</b>	<b>123</b>	<b>127</b>	<b>138</b>	<b>118</b>	<b>141</b>	<b>144</b>	<b>153</b>	<b>1,810</b>		
<b>Other Offices</b>	<b>Total</b>	<b>3</b>	<b>0</b>	<b>0</b>	<b>0</b>	<b>4</b>	<b>2</b>	<b>1</b>	<b>1</b>	<b>3</b>	<b>6</b>	<b>2</b>	<b>2</b>	<b>4</b>	<b>28</b>		
<b>Grand Total</b>	<b>Total</b>	<b>6,313</b>	<b>5,449</b>	<b>4,851</b>	<b>6,166</b>	<b>7,095</b>	<b>5,670</b>	<b>5,956</b>	<b>5,940</b>	<b>5,919</b>	<b>6,767</b>	<b>6,351</b>	<b>7,018</b>	<b>6,323</b>	<b>79,818</b>		

<sup>(1)</sup>CPS Reports or CWS Referrals not assigned to an office through the Assignment Designee, but were assigned to an office for an assessment or investigation.