



Monthly Screening and Investigation Report July 2014

Allison Blake, Ph.D., L.S.W.
Commissioner

August 20, 2014



NEW JERSEY DEPARTMENT OF
CHILDREN AND FAMILIES

Table of Contents

Table 1: NJ State Central Registry Activity: Monthly Child Abuse and Neglect Hotline Calls, Intakes and Assignments to CP&P Offices

Chart 1: CP&P Annual Trends in CPS Reports and CWS Referrals

Table 2: Assignments to CP&P Offices: CPS Reports and CWS Referrals

Table 3: Source of CPS Reports and CWS Referrals

Table 4: Monthly Count of CPS Reports and CWS Referrals Assigned to Counties

Table 5: Monthly Count of CPS Reports and CWS Referrals Assigned to CP&P Local Offices

Table 1: NJ State Central Registry Activity: Monthly Child Abuse and Neglect Hotline Calls, Intakes and Assignments to CP&P Offices^{1,2,6}

2013 - 2014	Hotline Call Activity		Intakes Recorded in NJ SPIRIT ^{5,7}												Assignments to CP&P Offices				
	Total Calls ³	Resulting Intakes ⁴	CPS Reports		CWS Referrals		No Action Required (NAR)		Related Information (RI)		Information & Referral (I&R)		Information Only (IO)		CPS Reports		CWS Referrals		Total Assignments
			n	%	n	%	n	%	n	%	n	%	n	%	n	%	n	%	
July 2013	12,870	14,377	4,302	29.9%	1,255	8.7%	375	2.6%	3,703	25.8%	1,591	11.1%	3,151	21.9%	4,301	77.4%	1,257	22.6%	5,558
August 2013	12,375	14,994	4,288	28.6%	1,198	8.0%	377	2.5%	3,934	26.2%	2,133	14.2%	3,064	20.4%	4,287	78.2%	1,198	21.8%	5,485
September 2013	14,201	15,762	4,814	30.5%	1,291	8.2%	395	2.5%	4,059	25.8%	1,957	12.4%	3,246	20.6%	4,813	78.9%	1,289	21.1%	6,102
October 2013	15,671	17,315	5,563	32.1%	1,530	8.8%	483	2.8%	4,308	24.9%	1,999	11.5%	3,432	19.8%	5,563	78.4%	1,532	21.6%	7,095
November 2013	13,950	15,260	4,687	30.7%	1,343	8.8%	261	1.7%	4,277	28.0%	1,586	10.4%	3,106	20.4%	4,686	77.7%	1,342	22.3%	6,028
December 2013	12,568	13,962	4,365	31.3%	1,260	9.0%	391	2.8%	3,445	24.7%	1,554	11.1%	2,947	21.1%	4,365	77.6%	1,261	22.4%	5,626
January 2014	15,091	16,412	5,097	31.1%	1,416	8.6%	346	2.1%	4,233	25.8%	1,728	10.5%	3,592	21.9%	5,097	78.3%	1,416	21.7%	6,513
February 2014	13,092	14,377	4,458	31.0%	1,293	9.0%	306	2.1%	3,838	26.7%	1,395	9.7%	3,087	21.5%	4,457	77.5%	1,295	22.5%	5,752
March 2014	15,236	16,707	5,408	32.4%	1,585	9.5%	363	2.2%	4,257	25.5%	1,774	10.6%	3,320	19.9%	5,408	77.3%	1,586	22.7%	6,994
April 2014	14,056	15,642	5,052	32.3%	1,467	9.4%	400	2.6%	3,846	24.6%	1,676	10.7%	3,201	20.5%	5,049	77.5%	1,467	22.5%	6,516
May 2014	15,690	17,101	5,501	32.2%	1,635	9.6%	396	2.3%	4,444	26.0%	1,816	10.6%	3,309	19.3%	5,501	77.1%	1,635	22.9%	7,136
June 2014	13,809	15,171	4,796	31.6%	1,516	10.0%	402	2.6%	4,028	26.6%	1,625	10.7%	2,804	18.5%	4,796	76.0%	1,517	24.0%	6,313
July 2014	12,308	13,784	4,202	30.5%	1,247	9.0%	384	2.8%	3,758	27.3%	1,487	10.8%	2,706	19.6%	4,202	77.1%	1,247	22.9%	5,449
<i>Monthly Average</i>	<i>13,917</i>	<i>15,451</i>	<i>4,810</i>	<i>31.1%</i>	<i>1,387</i>	<i>9.0%</i>	<i>375</i>	<i>2.4%</i>	<i>4,010</i>	<i>26.0%</i>	<i>1,717</i>	<i>11.1%</i>	<i>3,151</i>	<i>20.4%</i>	<i>4,810</i>	<i>77.6%</i>	<i>1,388</i>	<i>22.4%</i>	<i>6,197</i>
Overall Total	180,917		62,533		18,036		4,879		52,130		22,321		40,965		62,525	77.6%	18,042	22.4%	80,567

¹The data in this table comes from three distinct sources: (1) the ACD phone system which keeps a count of the number of calls and call routing; (2) Monthly NJSpirit Intakes which record decision making on calls received by hotline screeners, and (3) NJSpirit extracts of assigned CWS Referrals and CPS Reports.

²The number of Intakes, CPS Reports, and CWS Referrals are based on an extract from NJSpirit. The data extracted by the Office of Research, Evaluation, and Reporting on **August 11, 2014** includes all Intakes, CPS Reports, and CWS Referrals received from July 1, 2014 through July 31, 2014.

³The number calls received through the Automatic Call Distribution (ACD) System that were directed to a screener from any call-in phone number.

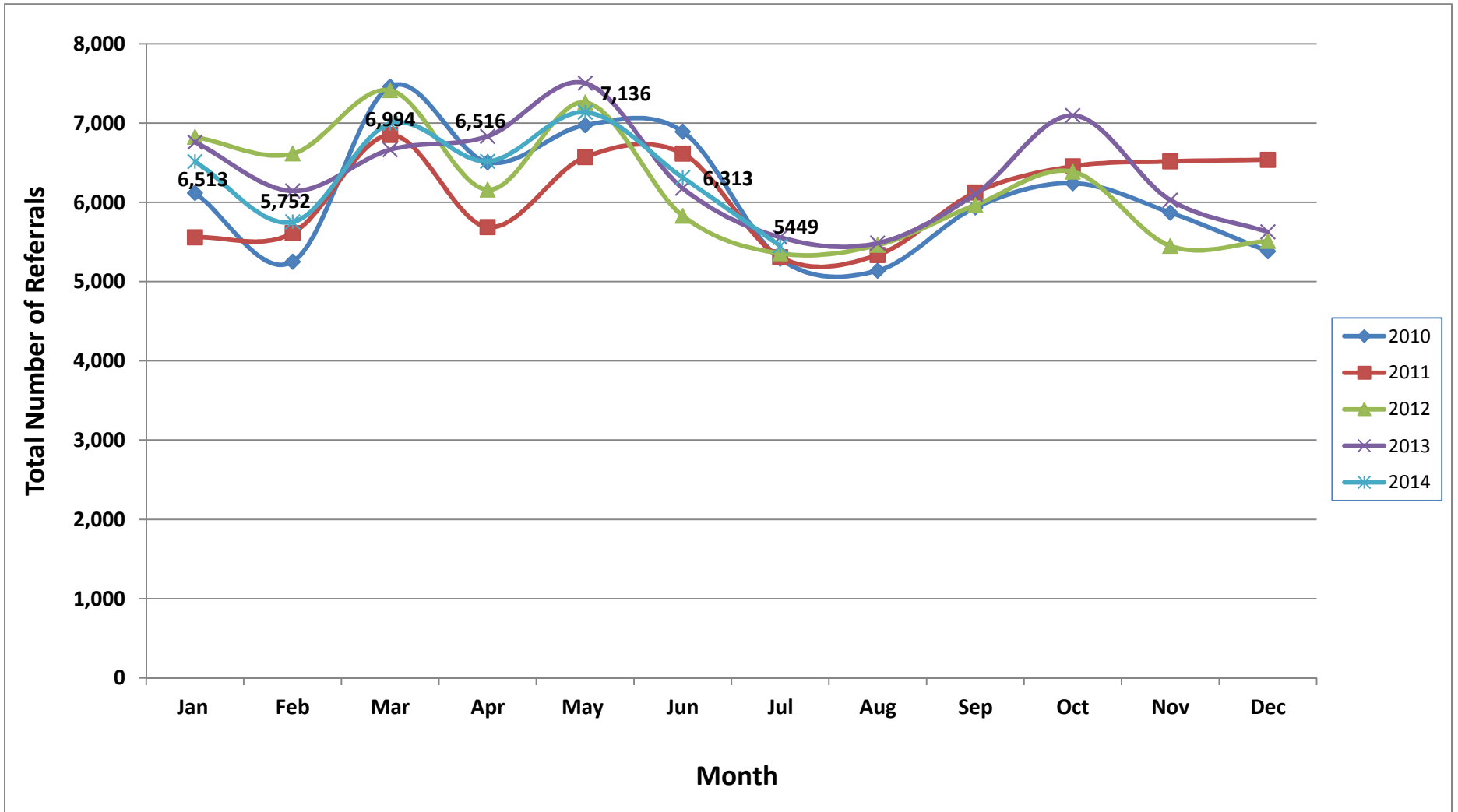
⁴The number of Intakes entered in NJSpirit from the number of calls received.

⁵The number of Intakes recorded in NJSpirit, by type of Intake. There is not a one-to-one relationship between an ACD call and an Intake; multiple calls to SCR may result in a single Intake, or one call may result in multiple Intakes.

⁶Intake: The process of documenting: a report of alleged abuse or neglect of a child (CPS); a request for services on behalf of a child, or a referral of a child for services (CWS); a call in which the caller provides additional or clarifying information about a current service case or active investigation (RI); informing a caller of, or referring a caller to, services available from other private or public sources (I&R); a call that requires no action by CP&P (NAR); or a response to a simple inquiry (IO).

⁷NJ SPIRIT: NJ Statewide Protection Investigation and Reporting Information Tool case management system

CP&P Annual Trends in CPS Reports and CWS Referrals



The data contained in this report is considered preliminary and as a result, these figures might be different than the final reported figures. The data is produced for continuous quality improvement.

Table 2: Assignments to CP&P Offices: CPS Reports and CWS Referrals¹

Intake Date		CPS Reports ^{2,3}	CWS Referrals ^{2,3}	Total Assignments ^{2,3}
2010	Jan 2010	5,154	963	6,117
	Feb 2010	4,446	804	5,250
	Mar 2010	6,314	1,147	7,461
	Apr 2010	5,465	1,040	6,505
	May 2010	5,797	1,177	6,974
	Jun 2010	5,734	1,157	6,891
	Jul 2010	4,270	1,017	5,287
	Aug 2010	4,110	1,028	5,138
	Sep 2010	4,922	1,012	5,934
	Oct 2010	5,105	1,136	6,241
	Nov 2010	4,842	1,028	5,870
	Dec 2010	4,472	909	5,381
	Total	60,631	12,418	73,049
2011	Jan 2011	4,616	942	5,558
	Feb 2011	4,672	939	5,611
	Mar 2011	5,701	1,148	6,849
	Apr 2011	4,682	1,005	5,687
	May 2011	5,362	1,207	6,569
	Jun 2011	5,299	1,315	6,614
	Jul 2011	4,200	1,108	5,308
	Aug 2011	4,170	1,166	5,336
	Sep 2011	4,872	1,253	6,125
	Oct 2011	5,322	1,132	6,454
	Nov 2011	5,220	1,296	6,516
	Dec 2011	5,363	1,173	6,536
	Total	59,479	13,684	73,163
2012	Jan 2012	5,530	1,294	6,824
	Feb 2012	5,358	1,255	6,613
	Mar 2012	5,985	1,428	7,413
	Apr 2012	4,899	1,259	6,158
	May 2012	5,874	1,385	7,259
	June 2012	4,640	1,190	5,830
	July 2012	4,254	1,101	5,355
	Aug 2012	4,325	1,135	5,460
	Sep 2012	4,769	1,196	5,965
	Oct 2012	5,178	1,207	6,385
	Nov 2012	4,310	1,138	5,448
	Dec 2012	4,394	1,116	5,510
	Total	59,516	14,704	74,220

Table 2: Assignments to CP&P Offices: CPS Reports and CWS Referrals¹

Intake Date		CPS Reports ^{2,3}	CWS Referrals ^{2,3}	Total Assignments ^{2,3}
2013	Jan 2013	5,464	1,296	6,760
	Feb 2013	4,966	1,177	6,143
	Mar 2013	5,355	1,309	6,664
	Apr 2013	5,430	1,402	6,832
	May 2013	5,993	1,510	7,503
	June 2013	4,947	1,230	6,177
	July 2013	4,330	1,228	5,558
	Aug 2013	4,330	1,155	5,485
	Sep 2013	4,851	1,251	6,102
	Oct 2013	5,614	1,481	7,095
	Nov 2013	4,694	1,334	6,028
	Dec 2013	4,397	1,229	5,626
	Total	60,371	15,602	75,973
2014	Jan 2014	5,138	1,375	6,513
	Feb 2014	4,499	1,253	5,752
	Mar 2014	5,438	1,556	6,994
	Apr 2014	5,105	1,411	6,516
	May 2014	5,541	1,595	7,136
	June 2014	4,842	1,471	6,313
	July 2014	4,228	1,221	5,449
	Total	34,791	9,882	44,673
Grand Total		274,788	66,290	341,078

¹Source of Data: NJ SPIRIT

²A CPS Report or a CWS Referral may include multiple children in a family, with one or more allegation or request for services. In these cases, each CPS Report or CWS Referral is counted once - the CPS Report or the CWS Referral is the unit of analysis rather than the child.

³Includes CPS Reports and CWS Referrals with an assignment to an office via the Assignment Designee process.

Table 3: Source of CPS Reports and CWS Referrals

	Source	July 2013	Aug 2013	Sep 2013	Oct 2013	Nov 2013	Dec 2013	Jan 2014	Feb 2014	Mar 2014	Apr 2014	May 2014	Jun 2014	July 2014		13 Month Total	
CPS Reports and CWS Referrals	School Staff	151	68	1,071	1,854	1,455	1,222	1,672	1,488	2,000	1,523	1,861	1,216	200	4%	15,781	20%
	Healthcare Provider	827	818	777	863	751	696	850	699	855	878	818	806	860	16%	10,498	13%
	Law Enforcement	947	978	913	840	855	756	845	760	900	853	994	955	961	18%	11,557	14%
	Government Agency	511	503	399	520	445	417	437	402	451	475	504	472	480	9%	6,016	7%
	Parent	624	666	591	561	523	561	561	477	526	525	666	554	593	11%	7,428	9%
	Relative/Friend/Neighbor	607	629	581	548	424	446	494	415	460	533	577	596	688	13%	6,998	9%
	Anonymous	795	786	879	903	742	683	776	661	803	740	741	723	609	11%	9,841	12%
	CP&P	136	119	106	116	91	93	109	100	126	111	128	148	139	3%	1,522	2%
	Court/Legal	128	135	118	148	84	108	102	110	145	142	116	120	138	3%	1,594	2%
	Community Group/Individual	273	247	208	238	218	188	249	224	248	275	269	241	274	5%	3,152	4%
	Facility Staff (incl Correctional Facility)	106	94	66	95	81	72	79	91	96	74	69	96	94	2%	1,113	1%
	Child (Self)	49	51	51	52	49	45	46	38	41	55	44	56	52	1%	629	1%
	Other	384	371	332	336	294	321	283	279	327	317	334	318	350	6%	4,246	5%
	Daycare/Babysitter	20	20	10	21	16	18	10	8	16	15	15	12	11	0%	192	0%
	Total	5,558	5,485	6,102	7,095	6,028	5,626	6,513	5,752	6,994	6,516	7,136	6,313	5,449		80,567	

Table 4: Monthly Count of CPS Reports and CWS Referrals Assigned to Counties

County														Average # of Assignments the Last 12 Months	Jun 14 to Jul 14 Numerical Difference	Jul 13 to Jul 14 Numerical Difference
	Jul 2013	Aug 2013	Sep 2013	Oct 2013	Nov 2013	Dec 2013	Jan 2014	Feb 2014	Mar 2014	Apr 2014	May 2014	Jun 2014	Jul 2014			
Atlantic	231	199	264	280	223	218	256	233	267	242	288	234	229	244	-5	-2
Bergen	240	275	296	385	344	314	359	307	342	334	378	295	228	321	-67	-12
Burlington	291	269	281	362	256	233	318	278	342	312	351	279	242	294	-37	-49
Camden	456	542	522	553	485	494	483	464	495	547	567	528	490	514	-38	34
Cape May	109	99	93	94	61	82	89	84	74	87	112	64	96	86	32	-13
Cumberland	198	198	205	262	210	183	197	214	208	222	247	210	218	215	8	20
Essex	596	607	657	712	653	574	651	563	762	664	753	632	536	647	-96	-60
Gloucester	231	266	296	261	248	213	259	258	266	234	297	295	254	262	-41	23
Hudson	386	384	407	506	441	429	493	399	537	437	509	466	338	446	-128	-48
Hunterdon	50	32	36	64	44	43	65	51	68	50	59	41	57	51	16	7
Mercer	207	225	235	253	237	215	251	228	296	279	299	279	246	254	-33	39
Middlesex	302	319	420	503	395	366	454	366	499	438	475	400	336	414	-64	34
Monmouth	321	297	329	386	354	337	373	357	429	379	400	388	293	360	-95	-28
Morris	188	169	207	231	206	206	242	209	224	237	250	214	198	216	-16	10
Ocean	385	339	380	448	385	340	432	350	429	369	411	416	372	389	-44	-13
Passaic	354	320	363	467	381	388	394	328	471	472	478	402	340	400	-62	-14
Salem	82	84	84	97	74	72	85	76	77	79	85	75	76	80	1	-6
Somerset	137	106	160	190	148	132	174	159	196	171	159	180	125	158	-55	-12
Sussex	120	78	88	102	110	73	115	86	88	106	116	92	96	96	4	-24
Union	202	206	258	360	295	302	329	303	337	347	306	303	245	299	-58	43
Warren	89	96	94	105	85	96	95	106	111	103	99	99	77	97	-22	-12
County Subtotals	5,175	5,110	5,675	6,621	5,635	5,310	6,114	5,419	6,518	6,109	6,639	5,892	5,092	5,845	-800	-83
Central Region IAIU	66	61	57	80	61	35	63	54	60	60	75	60	54	60	-6	-12
Metro Region IAIU	37	38	50	59	49	47	42	44	91	63	57	69	43	54	-26	6
Northern Region IAIU	61	46	68	83	67	63	77	66	88	60	85	59	50	68	-9	-11
Southern Region IAIU	74	69	65	108	70	54	69	50	78	79	106	74	61	74	-13	-13
IAIU Subtotals	238	214	240	330	247	199	251	214	317	262	323	262	208	256	-54	-30
Unable to Determine¹	143	161	183	142	144	115	146	119	155	143	171	156	149	149	-7	6
Other Offices	2	0	4	2	2	2	2	0	4	2	3	3	0	2		-2
Grand Total	5,558	5,485	6,102	7,095	6,028	5,626	6,513	5,752	6,994	6,516	7,136	6,313	5,449	6,251	-864	-109

¹CPS Reports or CWS Referrals not assigned to an office through the Assignment Designee, but were assigned to an office for an assessment or investigation.

Greatest One Month County Decrease (Numeric)

Greatest One Month County Increase (Numeric)


The data contained in this report is considered preliminary and as a result, these figures might be different than the final reported figures. The data is produced for continuous quality improvement across DCF.

Table 5: Monthly Count of CPS Reports and CWS Referrals Assigned to CP&P Local Offices

County	Local Office	Type of Referral	Referral Month													Total
			Jul 2013	Aug 2013	Sep 2013	Oct 2013	Nov 2013	Dec 2013	Jan 2014	Feb 2014	Mar 2014	Apr 2014	May 2014	Jun 2014	Jul 2014	
ATLANTIC	Atlantic East	CPS	91	106	112	142	107	94	118	93	116	117	124	94	104	1,418
		CWS	38	13	25	32	30	25	31	36	36	28	32	27	23	376
		Total	129	119	137	174	137	119	149	129	152	145	156	121	127	1,794
	Atlantic West	CPS	81	65	112	82	75	76	80	84	94	75	107	89	75	1,095
		CWS	21	15	15	24	11	23	27	20	21	22	25	24	27	275
		Total	102	80	127	106	86	99	107	104	115	97	132	113	102	1,370
	County Total	CPS	172	171	224	224	182	170	198	177	210	192	231	183	179	2,513
CWS		59	28	40	56	41	48	58	56	57	50	57	51	50	651	
Total		231	199	264	280	223	218	256	233	267	242	288	234	229	3,164	
BERGEN	Bergen Central	CPS	72	79	104	127	115	90	114	97	127	115	121	97	68	1,326
		CWS	17	32	22	55	33	29	39	25	35	39	45	31	23	425
		Total	89	111	126	182	148	119	153	122	162	154	166	128	91	1,751
	Bergen South	CPS	117	126	125	158	149	149	162	137	145	136	163	129	99	1,795
		CWS	34	38	45	45	47	46	44	48	35	44	49	38	38	551
		Total	151	164	170	203	196	195	206	185	180	180	212	167	137	2,346
	County Total	CPS	189	205	229	285	264	239	276	234	272	251	284	226	167	3,121
CWS		51	70	67	100	80	75	83	73	70	83	94	69	61	976	
Total		240	275	296	385	344	314	359	307	342	334	378	295	228	4,097	
BURLINGTON	Burlington East	CPS	105	93	115	150	99	89	120	104	128	119	132	103	98	1,455
		CWS	30	28	30	38	21	31	29	27	40	23	37	32	27	393
		Total	135	121	145	188	120	120	149	131	168	142	169	135	125	1,848
	Burlington West	CPS	124	113	98	142	113	83	139	108	139	133	141	111	94	1,538
		CWS	32	35	38	32	23	30	30	39	35	37	41	33	23	428
		Total	156	148	136	174	136	113	169	147	174	170	182	144	117	1,966
	County Total	CPS	229	206	213	292	212	172	259	212	267	252	273	214	192	2,993
CWS		62	63	68	70	44	61	59	66	75	60	78	65	50	821	
Total		291	269	281	362	256	233	318	278	342	312	351	279	242	3,814	
CAMDEN	Camden Central	CPS	99	108	128	112	99	107	119	115	100	127	110	127	111	1,462
		CWS	22	39	29	29	38	31	28	23	23	37	48	39	34	420
		Total	121	147	157	141	137	138	147	138	123	164	158	166	145	1,882
	Camden East	CPS	89	133	96	109	101	100	96	85	97	112	118	101	94	1,331
		CWS	26	30	34	28	29	36	25	29	45	34	21	38	27	402
		Total	115	163	130	137	130	136	121	114	142	146	139	139	121	1,733
	Camden North	CPS	104	91	91	107	86	93	94	95	94	107	96	104	91	1,253
		CWS	25	32	26	35	26	28	22	30	27	39	41	31	27	389
		Total	129	123	117	142	112	121	116	125	121	146	137	135	118	1,642
	Camden South	CPS	73	93	101	100	84	80	82	63	77	75	101	62	82	1,073
		CWS	18	16	17	33	22	19	17	24	32	16	32	26	24	296
		Total	91	109	118	133	106	99	99	87	109	91	133	88	106	1,369
	County Total	CPS	365	425	416	428	370	380	391	358	368	421	425	394	378	5,119
CWS		91	117	106	125	115	114	92	106	127	126	142	134	112	1,507	
Total		456	542	522	553	485	494	483	464	495	547	567	528	490	6,626	
CAPE MAY	Cape May	CPS	82	79	77	73	46	61	67	61	57	69	92	45	70	879
		CWS	27	20	16	21	15	21	22	23	17	18	20	19	26	265
		Total	109	99	93	94	61	82	89	84	74	87	112	64	96	1,144
	County Total	CPS	82	79	77	73	46	61	67	61	57	69	92	45	70	879
		CWS	27	20	16	21	15	21	22	23	17	18	20	19	26	265
Total	109	99	93	94	61	82	89	84	74	87	112	64	96	1,144		
CUMBERLAND	Cumberland East	CPS	57	63	55	61	49	59	45	60	48	51	64	57	67	736
		CWS	11	15	23	22	16	9	16	12	13	21	18	22	5	203
		Total	68	78	78	83	65	68	61	72	61	72	82	79	72	939
	Cumberland West	CPS	107	98	96	146	107	93	107	109	112	120	132	109	121	1,457
		CWS	23	22	31	33	38	22	29	33	35	30	33	22	25	376
		Total	130	120	127	179	145	115	136	142	147	150	165	131	146	1,833
	County Total	CPS	164	161	151	207	156	152	152	169	160	171	196	166	188	2,193
CWS		34	37	54	55	54	31	45	45	48	51	51	44	30	579	
Total	198	198	205	262	210	183	197	214	208	222	247	210	218	2,772		

Table 5: Monthly Count of CPS Reports and CWS Referrals Assigned to CP&P Local Offices

County	Local Office	Type of Referral	Referral Month												Total	
			Jul 2013	Aug 2013	Sep 2013	Oct 2013	Nov 2013	Dec 2013	Jan 2014	Feb 2014	Mar 2014	Apr 2014	May 2014	Jun 2014		Jul 2014
ESSEX	Essex Central	CPS	93	76	78	111	76	93	89	85	101	93	95	98	76	1,164
		CWS	33	23	32	36	40	30	41	27	36	26	36	28	28	416
		Total	126	99	110	147	116	123	130	112	137	119	131	126	104	1,580
	Essex North	CPS	51	61	61	85	68	54	68	50	88	68	78	56	37	825
		CWS	16	14	17	28	20	14	19	14	16	18	29	26	13	244
		Total	67	75	78	113	88	68	87	64	104	86	107	82	50	1,069
	Essex South	CPS	58	51	66	79	68	48	64	63	80	64	63	66	42	812
		CWS	26	27	30	16	41	22	23	14	32	28	25	16	23	323
		Total	84	78	96	95	109	70	87	77	112	92	88	82	65	1,135
	Newark Center City	CPS	79	91	88	84	93	68	81	83	104	79	85	80	73	1,088
		CWS	24	21	27	29	26	22	18	23	28	26	46	28	19	337
		Total	103	112	115	113	119	90	99	106	132	105	131	108	92	1,425
	Newark Northeast	CPS	77	91	103	96	84	81	101	63	90	77	103	74	83	1,123
		CWS	25	26	27	22	28	14	27	23	29	34	39	41	22	357
		Total	102	117	130	118	112	95	128	86	119	111	142	115	105	1,480
	Newark South	CPS	90	102	102	102	68	97	93	88	99	114	112	88	91	1,246
		CWS	24	21	25	19	40	28	26	30	59	36	42	31	29	410
Total		114	123	127	121	108	125	119	118	158	150	154	119	120	1,656	
Newark Adoption Office	CPS	0	0	0	4	0	0	1	0	0	1	0	0	0	6	
	CWS	0	3	1	1	1	3	0	0	0	0	0	0	0	9	
	Total	0	3	1	5	1	3	1	0	0	1	0	0	0	15	
County Total	CPS	448	472	498	561	457	441	497	432	562	496	536	462	402	6,264	
	CWS	148	135	159	151	196	133	154	131	200	168	217	170	134	2,096	
	Total	596	607	657	712	653	574	651	563	762	664	753	632	536	8,360	
GLOUCESTER	Gloucester East	CPS	90	93	113	98	90	74	95	95	97	82	114	112	94	1,247
		CWS	22	27	28	27	18	26	31	19	32	27	31	22	21	331
		Total	112	120	141	125	108	100	126	114	129	109	145	134	115	1,578
	Gloucester West	CPS	97	119	111	109	109	92	108	110	112	107	116	125	103	1,418
		CWS	22	27	44	27	31	21	25	34	25	18	36	36	36	382
		Total	119	146	155	136	140	113	133	144	137	125	152	161	139	1,800
	County Total	CPS	187	212	224	207	199	166	203	205	209	189	230	237	197	2,665
CWS		44	54	72	54	49	47	56	53	57	45	67	58	57	713	
Total		231	266	296	261	248	213	259	258	266	234	297	295	254	3,378	
HUDSON	Hudson Central	CPS	63	60	80	80	76	59	85	75	79	80	96	84	74	991
		CWS	31	30	28	29	30	23	18	23	21	22	32	19	28	334
		Total	94	90	108	109	106	82	103	98	100	102	128	103	102	1,325
	Hudson North	CPS	63	59	74	96	89	103	109	85	105	86	93	98	48	1,108
		CWS	18	27	16	38	19	20	33	18	25	19	25	32	19	309
		Total	81	86	90	134	108	123	142	103	130	105	118	130	67	1,417
	Hudson South	CPS	88	93	85	112	76	89	104	80	112	83	93	88	66	1,169
		CWS	39	26	20	24	33	17	28	25	44	33	41	29	19	378
		Total	127	119	105	136	109	106	132	105	156	116	134	117	85	1,547
	Hudson West	CPS	71	67	74	102	97	79	85	67	113	90	102	92	63	1,102
		CWS	13	22	30	25	21	39	31	26	38	24	27	24	21	341
		Total	84	89	104	127	118	118	116	93	151	114	129	116	84	1,443
	County Total	CPS	285	279	313	390	338	330	383	307	409	339	384	362	251	4,370
CWS		101	105	94	116	103	99	110	92	128	98	125	104	87	1,362	
Total		386	384	407	506	441	429	493	399	537	437	509	466	338	5,732	
HUNTERDON	Hunterdon	CPS	43	20	21	51	31	35	47	38	55	39	40	33	44	497
		CWS	7	12	15	13	13	8	18	13	13	11	19	8	13	163
		Total	50	32	36	64	44	43	65	51	68	50	59	41	57	660
	County Total	CPS	43	20	21	51	31	35	47	38	55	39	40	33	44	497
		CWS	7	12	15	13	13	8	18	13	13	11	19	8	13	163
MERCER	Mercer North	CPS	85	69	94	106	84	80	97	101	109	93	105	102	87	1,212
		CWS	28	25	17	18	33	28	27	25	23	28	43	38	25	358
		Total	113	94	111	124	117	108	124	126	132	121	148	140	112	1,570
	Mercer South	CPS	75	108	99	110	91	90	107	83	127	123	128	109	106	1,356
		CWS	19	23	25	19	29	17	20	19	37	35	23	30	28	324
		Total	94	131	124	129	120	107	127	102	164	158	151	139	134	1,680
	County Total	CPS	160	177	193	216	175	170	204	184	236	216	233	211	193	2,568
CWS		47	48	42	37	62	45	47	44	60	63	66	68	53	682	
Total		207	225	235	253	237	215	251	228	296	279	299	279	246	3,250	

The data contained in this report is considered preliminary and as a result, these figures might be different than the final reported figures. The data is produced for continuous quality improvement across DCF.

Table 5: Monthly Count of CPS Reports and CWS Referrals Assigned to CP&P Local Offices

County	Local Office	Type of Referral	Referral Month													Total
			Jul 2013	Aug 2013	Sep 2013	Oct 2013	Nov 2013	Dec 2013	Jan 2014	Feb 2014	Mar 2014	Apr 2014	May 2014	Jun 2014	Jul 2014	
MIDDLESEX	Middlesex Central	CPS	38	64	80	100	74	73	82	71	87	78	87	79	65	978
		CWS	25	15	17	28	22	13	22	19	21	22	20	19	19	262
		Total	63	79	97	128	96	86	104	90	108	100	107	98	84	1,240
	Middlesex Coastal	CPS	103	107	149	145	112	96	131	97	171	135	149	122	118	1,635
		CWS	33	29	26	42	22	35	32	21	37	34	28	34	20	393
		Total	136	136	175	187	134	131	163	118	208	169	177	156	138	2,028
	Middlesex West	CPS	86	82	120	150	127	107	153	124	143	136	162	109	87	1,586
		CWS	17	22	28	38	38	42	34	34	40	33	29	37	27	419
		Total	103	104	148	188	165	149	187	158	183	169	191	146	114	2,005
	County Total	CPS	227	253	349	395	313	276	366	292	401	349	398	310	270	4,199
CWS		75	66	71	108	82	90	88	74	98	89	77	90	66	1,074	
Total		302	319	420	503	395	366	454	366	499	438	475	400	336	5,273	
MONMOUTH	Monmouth North	CPS	128	132	141	179	167	151	147	147	183	166	183	139	125	1,988
		CWS	33	29	33	32	41	50	36	40	51	57	35	52	39	528
		Total	161	161	174	211	208	201	183	187	234	223	218	191	164	2,516
	Monmouth South	CPS	128	103	129	138	112	104	144	136	150	117	131	153	111	1,656
		CWS	32	33	26	37	34	32	46	34	45	39	51	44	18	471
		Total	160	136	155	175	146	136	190	170	195	156	182	197	129	2,127
	County Total	CPS	256	235	270	317	279	255	291	283	333	283	314	292	236	3,644
		CWS	65	62	59	69	75	82	82	74	96	96	86	96	57	999
		Total	321	297	329	386	354	337	373	357	429	379	400	388	293	4,643
	MORRIS	Morris West	CPS	76	73	88	103	101	94	110	108	97	102	97	87	80
CWS			28	33	35	31	23	29	26	26	26	33	32	32	26	380
Total			104	106	123	134	124	123	136	134	123	135	129	119	106	1,596
Morris East		CPS	63	52	65	81	62	64	76	49	77	85	82	66	70	892
		CWS	21	11	19	16	20	19	30	26	24	17	39	29	22	293
		Total	84	63	84	97	82	83	106	75	101	102	121	95	92	1,185
County Total		CPS	139	125	153	184	163	158	186	157	174	187	179	153	150	2,108
		CWS	49	44	54	47	43	48	56	52	50	50	71	61	48	673
		Total	188	169	207	231	206	206	242	209	224	237	250	214	198	2,781
OCEAN		Ocean North	CPS	131	123	147	179	149	127	146	134	128	149	161	148	132
	CWS		31	22	30	56	34	29	45	31	44	30	38	36	33	459
	Total		162	145	177	235	183	156	191	165	172	179	199	184	165	2,313
	Ocean South	CPS	160	154	173	176	159	150	198	145	207	155	156	188	156	2,177
		CWS	63	40	30	37	43	34	43	40	50	35	56	44	51	566
		Total	223	194	203	213	202	184	241	185	257	190	212	232	207	2,743
	County Total	CPS	291	277	320	355	308	277	344	279	335	304	317	336	288	4,031
		CWS	94	62	60	93	77	63	88	71	94	65	94	80	84	1,025
		Total	385	339	380	448	385	340	432	350	429	369	411	416	372	5,056
	PASSAIC	Passaic Central	CPS	144	128	131	194	161	139	165	152	200	184	203	159	128
CWS			29	27	39	57	37	47	41	44	71	50	55	60	49	606
Total			173	155	170	251	198	186	206	196	271	234	258	219	177	2,694
Passaic North		CPS	136	130	151	160	137	162	136	104	159	176	176	131	122	1,880
		CWS	45	35	42	56	46	40	52	28	41	62	44	52	41	584
		Total	181	165	193	216	183	202	188	132	200	238	220	183	163	2,464
County Total		CPS	280	258	282	354	298	301	301	256	359	360	379	290	250	3,968
		CWS	74	62	81	113	83	87	93	72	112	112	99	112	90	1,190
		Total	354	320	363	467	381	388	394	328	471	472	478	402	340	5,158
SALEM		Salem	CPS	63	65	67	80	52	58	66	59	56	67	66	54	57
	CWS		19	19	17	17	22	14	19	17	21	12	19	21	19	236
	Total		82	84	84	97	74	72	85	76	77	79	85	75	76	1,046
	County Total	CPS	63	65	67	80	52	58	66	59	56	67	66	54	57	810
		CWS	19	19	17	17	22	14	19	17	21	12	19	21	19	236
		Total	82	84	84	97	74	72	85	76	77	79	85	75	76	1,046
SOMERSET	Somerset	CPS	114	86	133	140	122	103	142	125	161	133	120	137	102	1,618
		CWS	23	20	27	50	26	29	32	34	35	38	39	43	23	419
		Total	137	106	160	190	148	132	174	159	196	171	159	180	125	2,037
	County Total	CPS	114	86	133	140	122	103	142	125	161	133	120	137	102	1,618
		CWS	23	20	27	50	26	29	32	34	35	38	39	43	23	419
		Total	137	106	160	190	148	132	174	159	196	171	159	180	125	2,037

The data contained in this report is considered preliminary and as a result, these figures might be different than the final reported figures. The data is produced for continuous quality improvement across DCF.

Table 5: Monthly Count of CPS Reports and CWS Referrals Assigned to CP&P Local Offices

County	Local Office	Type of Referral	Referral Month													Total	
			Jul 2013	Aug 2013	Sep 2013	Oct 2013	Nov 2013	Dec 2013	Jan 2014	Feb 2014	Mar 2014	Apr 2014	May 2014	Jun 2014	Jul 2014		
SUSSEX	Sussex	CPS	89	62	73	80	82	58	86	71	69	87	88	71	73	989	
		CWS	31	16	15	22	28	15	29	15	19	19	28	21	23	281	
		Total	120	78	88	102	110	73	115	86	88	106	116	92	96	1,270	
	County Total	CPS	89	62	73	80	82	58	86	71	69	87	88	71	73	989	
		CWS	31	16	15	22	28	15	29	15	19	19	28	21	23	281	
UNION	Union Central	CPS	53	46	56	91	76	75	69	73	79	93	69	73	59	912	
		CWS	17	17	18	27	20	20	18	27	34	19	20	21	24	282	
		Total	70	63	74	118	96	95	87	100	113	112	89	94	83	1,194	
	Union East	CPS	69	64	82	100	87	96	109	77	103	110	79	92	63	1,131	
		CWS	13	15	21	28	29	24	30	20	29	34	25	38	26	332	
		Total	82	79	103	128	116	120	139	97	132	144	104	130	89	1,463	
	Union West	CPS	32	54	65	88	67	70	80	77	59	67	88	59	47	853	
		CWS	18	10	16	26	16	17	23	29	33	24	25	20	26	283	
		Total	50	64	81	114	83	87	103	106	92	91	113	79	73	1,136	
	County Total	CPS	154	164	203	279	230	241	258	227	241	270	236	224	169	2,896	
		CWS	48	42	55	81	65	61	71	76	96	77	70	79	76	897	
		Total	202	206	258	360	295	302	329	303	337	347	306	303	245	3,793	
	WARREN	Warren	CPS	69	77	71	78	70	77	70	82	81	76	76	72	66	965
CWS			20	19	23	27	15	19	25	24	30	27	23	27	11	290	
Total			89	96	94	105	85	96	95	106	111	103	99	99	77	1,255	
County Total		CPS	69	77	71	78	70	77	70	82	81	76	76	72	66	965	
		CWS	20	19	23	27	15	19	25	24	30	27	23	27	11	290	
Total	89	96	94	105	85	96	95	106	111	103	99	99	77	1,255			
County CPS Referral Total		CPS	4,006	4,009	4,480	5,196	4,347	4,120	4,787	4,208	5,015	4,751	5,097	4,472	3,922	58,410	
County CWS Referral Total		CWS	1,169	1,101	1,195	1,425	1,288	1,190	1,327	1,211	1,503	1,358	1,542	1,420	1,170	16,899	
County Referral Total		Total	5,175	5,110	5,675	6,621	5,635	5,310	6,114	5,419	6,518	6,109	6,639	5,892	5,092	75,309	
Central Region IAIU		CPS	66	61	57	80	61	35	63	54	60	60	75	60	54	786	
		CWS	0	0	0	0	0	0	0	0	0	0	0	0	0	0	0
		Total	66	61	57	80	61	35	63	54	60	60	75	60	54	786	
Metro Region IAIU		CPS	37	38	50	59	49	47	42	44	91	63	57	69	43	689	
		CWS	0	0	0	0	0	0	0	0	0	0	0	0	0	0	0
		Total	37	38	50	59	49	47	42	44	91	63	57	69	43	689	
Northern Region IAIU		CPS	61	46	68	83	65	63	77	66	88	60	85	59	50	871	
		CWS	0	0	0	0	2	0	0	0	0	0	0	0	0	2	2
		Total	61	46	68	83	67	63	77	66	88	60	85	59	50	873	
Southern Region IAIU		CPS	74	69	65	108	70	54	69	50	78	79	106	74	61	957	
		CWS	0	0	0	0	0	0	0	0	0	0	0	0	0	0	0
		Total	74	69	65	108	70	54	69	50	78	79	106	74	61	957	
IAIU CPS Subtotal		CPS	238	214	240	330	245	199	251	214	317	262	323	262	208	3,303	
IAIU CWS Subtotal		CWS	0	0	0	0	2	0	0	0	0	0	0	0	2	2	
IAIU Subtotal		Total	238	214	240	330	247	199	251	214	317	262	323	262	208	3,305	
County and IAIU CPS Subtotal		CPS	4,244	4,223	4,720	5,526	4,592	4,319	5,038	4,422	5,332	5,013	5,420	4,734	4,130	61,713	
County and IAIU CWS Subtotal		CWS	1,169	1,101	1,195	1,425	1,290	1,190	1,327	1,211	1,503	1,358	1,542	1,420	1,170	16,901	
Unable to Determine⁽¹⁾		Total	143	161	183	142	144	115	146	119	155	143	171	156	149	1,927	
Other Offices		Total	2	0	4	2	2	2	2	0	4	2	3	3	0	26	
Grand Total		Total	5,558	5,485	6,102	7,095	6,028	5,626	6,513	5,752	6,994	6,516	7,136	6,313	5,449	80,567	

⁽¹⁾CPS Reports or CWS Referrals not assigned to an office through the Assignment Designee, but were assigned to an office for an assessment or investigation.