



## **Child Protection and Permanency**

# **Monthly Screening and Investigation Report September 2015**

Allison Blake, Ph.D., L.S.W.  
Commissioner

October 16, 2015



## Table of Contents

Table 1: NJ State Central Registry Activity: Monthly Child Abuse and Neglect Hotline Calls, Intakes and Assignments to Child Protection & Permanency (CP&P) Offices

---

Chart 1: CP&P Annual Trends in Child Protection Services (CPS) Reports and Child Welfare Services (CWS) Referrals

---

Table 2: Assignments to CP&P Offices: CPS Reports and CWS Referrals

---

Table 3: Source of CPS Reports and CWS Referrals

---

Table 4: Monthly Count of CPS Reports and CWS Referrals Assigned to Counties

---

Table 5: Monthly Count of CPS Reports and CWS Referrals Assigned to CP&P Local Offices

---

**Table 1: NJ State Central Registry Activity: Monthly Child Abuse and Neglect Hotline Calls, Intakes and Assignments to CP&P Offices<sup>1,2,7</sup>**

2014 - 2015	Hotline Call Activity				Intakes Recorded in NJ SPIRIT <sup>6,8</sup>												Assignments to CP&P Offices				
	Total Calls to SCR <sup>3</sup>	Abandon Calls <sup>4</sup>	Average Time to Answer (seconds)	Resulting NJS Intakes <sup>5</sup>	CPS Reports		CWS Referrals		No Action Required (NAR)		Related Information (RI)		Information & Referral (I&R)		Information Only (IO)		CPS Reports		CWS Referrals		Total
					n	%	n	%	n	%	n	%	n	%	n	%	n	%	n	%	
September 2014	13,664	359	22	15,190	4,668	30.7%	1,496	9.8%	393	2.6%	3,949	26.0%	1,792	11.8%	2,892	19.0%	4,668	75.7%	1,498	24.3%	6,166
October 2014	15,268	435	26	16,868	5,510	32.7%	1,584	9.4%	555	3.3%	4,259	25.2%	1,946	11.5%	3,014	17.9%	5,509	77.6%	1,586	22.4%	7,095
November 2014	12,649	391	28	13,938	4,254	30.5%	1,416	10.2%	297	2.1%	3,895	27.9%	1,473	10.6%	2,603	18.7%	4,254	75.0%	1,416	25.0%	5,670
December 2014	13,289	468	29	14,588	4,511	30.9%	1,449	9.9%	303	2.1%	3,888	26.7%	1,620	11.1%	2,817	19.3%	4,509	75.7%	1,447	24.3%	5,956
January 2015	13,991	761	34	15,030	4,549	30.3%	1,390	9.2%	387	2.6%	3,939	26.2%	1,591	10.6%	3,174	21.1%	4,549	76.6%	1,391	23.4%	5,940
February 2015	12,881	537	35	14,010	4,573	32.6%	1,342	9.6%	418	3.0%	3,494	24.9%	1,516	10.8%	2,667	19.0%	4,574	77.3%	1,345	22.7%	5,919
March 2015	14,805	486	30	16,174	5,187	32.1%	1,580	9.8%	363	2.2%	4,021	24.9%	1,811	11.2%	3,212	19.9%	5,187	76.7%	1,580	23.3%	6,767
April 2015	13,698	409	26	15,107	4,967	32.9%	1,381	9.1%	366	2.4%	3,900	25.8%	1,615	10.7%	2,878	19.1%	4,967	78.2%	1,384	21.8%	6,351
May 2015	15,466	583	39	16,769	5,457	32.5%	1,560	9.3%	340	2.0%	4,437	26.5%	1,874	11.2%	3,101	18.5%	5,457	77.8%	1,561	22.2%	7,018
June 2015	13,760	405	29	15,189	4,887	32.2%	1,436	9.5%	373	2.5%	3,981	26.2%	1,659	10.9%	2,853	18.8%	4,887	77.3%	1,436	22.7%	6,323
July 2015	12,132	380	20	13,624	4,140	30.4%	1,273	9.3%	442	3.2%	3,569	26.2%	1,416	10.4%	2,784	20.4%	4,140	76.5%	1,273	23.5%	5,413
August 2015	12,553	652	26	13,691	3,978	29.1%	1,257	9.2%	401	2.9%	3,713	27.1%	1,384	10.1%	2,958	21.6%	3,978	76.0%	1,256	24.0%	5,234
<b>September 2015</b>	<b>13,335</b>	<b>351</b>	<b>24</b>	<b>14,955</b>	<b>4,776</b>	<b>31.9%</b>	<b>1,494</b>	<b>10.0%</b>	<b>467</b>	<b>3.1%</b>	<b>3,908</b>	<b>26.1%</b>	<b>1,601</b>	<b>10.7%</b>	<b>2,709</b>	<b>18.1%</b>	<b>4,776</b>	<b>76.2%</b>	<b>1,495</b>	<b>23.8%</b>	<b>6,271</b>
<b>Monthly Average</b>	<b>13,653</b>	<b>478</b>	<b>28</b>	<b>15,010</b>	<b>4,727</b>	<b>31.5%</b>	<b>1,435</b>	<b>9.6%</b>	<b>393</b>	<b>2.6%</b>	<b>3,919</b>	<b>26.1%</b>	<b>1,638</b>	<b>10.9%</b>	<b>2,897</b>	<b>19.3%</b>	<b>4,727</b>	<b>76.7%</b>	<b>1,436</b>	<b>23.3%</b>	<b>6,163</b>
<b>Overall Total</b>	<b>177,491</b>	<b>6,217</b>		<b>195,133</b>	<b>61,457</b>		<b>18,658</b>		<b>5,105</b>		<b>50,953</b>		<b>21,298</b>		<b>37,662</b>		<b>61,455</b>	<b>76.7%</b>	<b>18,668</b>	<b>23.3%</b>	<b>80,123</b>

<sup>1</sup> Comes from three distinct sources: (1) the Automatic Call Distribution (ACD) phone system; which keeps a count of the number of calls and call routing; (2) Monthly NJSpirit Intakes; which record decision making on calls received by hotline screeners, and (3) NJSpirit extracts of assigned CWS Referrals and CPS Reports.

<sup>2</sup> The number of Intakes, CPS Reports, and CWS Referrals are based on an extract from NJSpirit. Data extracted by the Office of Research, Evaluation, and Reporting on **October 14, 2015** includes all Intakes, CPS Reports, and CWS Referrals received from **September 1, 2015 through September 30, 2015**.

<sup>3</sup> The number calls received through the ACD System that were directed to a screener from any call-in phone number.

<sup>4</sup> The number of calls received through the ACD System that are abandoned either while waiting in queue or while ringing.

<sup>5</sup> The number of Intakes entered in NJSpirit from the number of calls received.

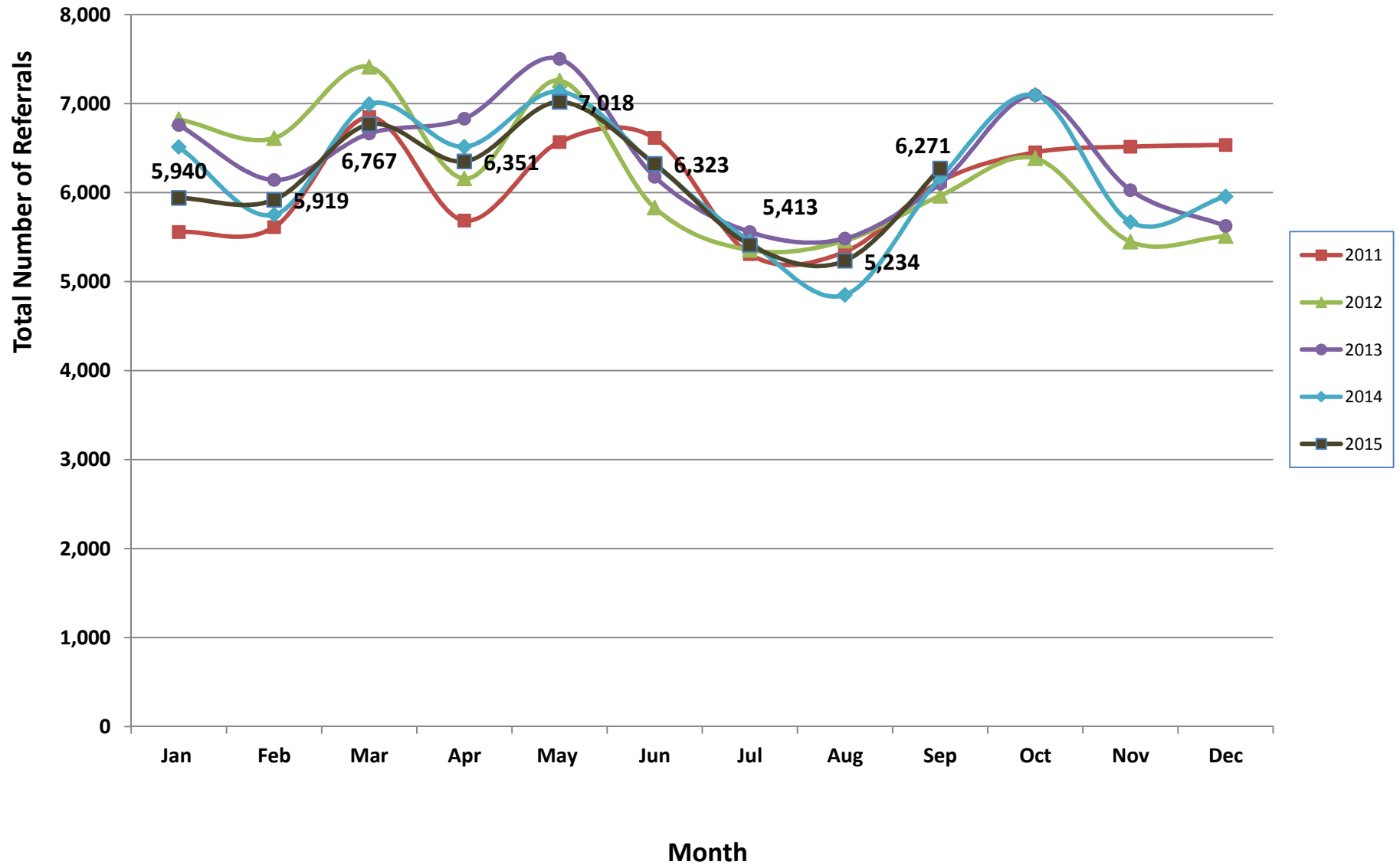
<sup>6</sup> The number of Intakes recorded in NJSpirit, by type of Intake. There is not a one-to-one relationship between an ACD call and an Intake; multiple calls to State Central Registry (SCR) may result in a single Intake, or one call may result in multiple Intakes.

<sup>7</sup> Intake: The process of documenting: a report of alleged abuse or neglect of a child (CPS); a request for services on behalf of a child, or a referral of a child for services (CWS); a call in which the caller provides additional or clarifying information about a current service case or active investigation (RI); informing a caller of, or referring a caller to, services available from other private or public sources (I&R); a call that requires no action by CP&P (NAR); or a response to a simple inquiry (IO).

<sup>8</sup> NJ SPIRIT: NJ Statewide Protection Investigation and Reporting Information Tool case management system



### CP&P Annual Trends in CPS Reports and CWS Referrals



The data contained in this report is considered preliminary and as a result, these figures might be different than the final reported figures. The data is produced for continuous quality improvement.

**Table 2: Assignments to CP&P Offices: CPS Reports and CWS Referrals<sup>1</sup>**

Intake Date <sup>3</sup>		CPS Reports <sup>2</sup>	CWS Referrals <sup>2</sup>	Total Assignments <sup>2</sup>
2010	Jan 2010	5,154	963	6,117
	Feb 2010	4,446	804	5,250
	Mar 2010	6,314	1,147	7,461
	Apr 2010	5,465	1,040	6,505
	May 2010	5,797	1,177	6,974
	Jun 2010	5,734	1,157	6,891
	Jul 2010	4,270	1,017	5,287
	Aug 2010	4,110	1,028	5,138
	Sep 2010	4,922	1,012	5,934
	Oct 2010	5,105	1,136	6,241
	Nov 2010	4,842	1,028	5,870
	Dec 2010	4,472	909	5,381
	<b>Total</b>	<b>60,631</b>	<b>12,418</b>	<b>73,049</b>
2011	Jan 2011	4,616	942	5,558
	Feb 2011	4,672	939	5,611
	Mar 2011	5,701	1,148	6,849
	Apr 2011	4,682	1,005	5,687
	May 2011	5,362	1,207	6,569
	Jun 2011	5,299	1,315	6,614
	Jul 2011	4,200	1,108	5,308
	Aug 2011	4,170	1,166	5,336
	Sep 2011	4,872	1,253	6,125
	Oct 2011	5,322	1,132	6,454
	Nov 2011	5,220	1,296	6,516
	Dec 2011	5,363	1,173	6,536
	<b>Total</b>	<b>59,479</b>	<b>13,684</b>	<b>73,163</b>
2012	Jan 2012	5,530	1,294	6,824
	Feb 2012	5,358	1,255	6,613
	Mar 2012	5,985	1,428	7,413
	Apr 2012	4,899	1,259	6,158
	May 2012	5,874	1,385	7,259
	Jun 2012	4,640	1,190	5,830
	Jul 2012	4,254	1,101	5,355
	Aug 2012	4,325	1,135	5,460
	Sep 2012	4,769	1,196	5,965
	Oct 2012	5,178	1,207	6,385
	Nov 2012	4,310	1,138	5,448
	Dec 2012	4,394	1,116	5,510
	<b>Total</b>	<b>59,516</b>	<b>14,704</b>	<b>74,220</b>
2013	Jan 2013	5,464	1,296	6,760
	Feb 2013	4,966	1,177	6,143
	Mar 2013	5,355	1,309	6,664
	Apr 2013	5,430	1,402	6,832
	May 2013	5,993	1,510	7,503
	Jun 2013	4,947	1,230	6,177
	Jul 2013	4,330	1,228	5,558
	Aug 2013	4,330	1,155	5,485
	Sep 2013	4,851	1,251	6,102
	Oct 2013	5,614	1,481	7,095
	Nov 2013	4,694	1,334	6,028
	Dec 2013	4,397	1,229	5,626
	<b>Total</b>	<b>60,371</b>	<b>15,602</b>	<b>75,973</b>

**Table 2: Assignments to CP&P Offices: CPS Reports and CWS Referrals<sup>1</sup>**

Intake Date <sup>3</sup>		CPS Reports <sup>2</sup>	CWS Referrals <sup>2</sup>	Total Assignments <sup>2</sup>
<b>2014</b>	Jan 2014	5,097	1,416	6,513
	Feb 2014	4,457	1,295	5,752
	Mar 2014	5,408	1,586	6,994
	Apr 2014	5,049	1,467	6,516
	May 2014	5,501	1,635	7,136
	Jun 2014	4,796	1,517	6,313
	Jul 2014	4,202	1,247	5,449
	Aug 2014	3,629	1,222	4,851
	Sep 2014	4,668	1,498	6,166
	Oct 2014	5,509	1,586	7,095
	Nov 2014	4,254	1,416	5,670
	Dec 2014	4,509	1,447	5,956
	<b>Total</b>	<b>57,079</b>	<b>17,332</b>	<b>74,411</b>
<b>2015</b>	Jan 2015	4,549	1,391	5,940
	Feb 2015	4,574	1,345	5,919
	Mar 2015	5,187	1,580	6,767
	Apr 2015	4,967	1,384	6,351
	May 2015	5,457	1,561	7,018
	Jun 2015	4,887	1,436	6,323
	Jul 2015	4,140	1,273	5,413
	August 2015	3,978	1,256	5,234
	<b>September 2015</b>	<b>4,776</b>	<b>1,495</b>	<b>6,271</b>
	<b>Total</b>	<b>42,515</b>	<b>12,721</b>	<b>55,236</b>
<b>Grand Total</b>		<b>339,591</b>	<b>86,461</b>	<b>426,052</b>

<sup>1</sup>Source of Data: NJ SPIRIT

<sup>2</sup>A CPS Report or a CWS Referral may include multiple children in a family, with one or more allegation or request for services. In these cases, each CPS Report or CWS Referral is counted once - the CPS Report or the CWS Referral is the unit of analysis rather than the child.

<sup>3</sup>Prior to January 2014, the number of CPS Reports and CWS Referrals was based on the type of assignment of the CPS Report or CWS Referral. Beginning in January 2014, the number of CPS Reports and CWS Referrals is based on the number of CPS Reports and CWS Referrals received.

**Table 3: Source of CPS Reports and CWS Referrals**

	Source	Sep	Oct	Nov	Dec	Jan	Feb	Mar	Apr	May	Jun	Jul	Aug	September		13 Month Total	
		2014	2014	2014	2014	2015	2015	2015	2015	2015	2015	2015	2015	2015	2015	2015	
CPS Reports and CWS Referrals	School Staff	1,200	1,935	1,395	1,481	1,504	1,629	1,894	1,487	1,868	1,166	183	75	1,123	18%	16,940	21%
	Healthcare Provider	774	824	735	774	701	720	825	861	812	808	816	832	780	12%	10,262	13%
	Law Enforcement	922	898	835	820	870	783	933	925	1056	1093	1082	1,010	1,040	17%	12,267	15%
	Government Agency	470	474	350	402	362	377	465	445	370	422	495	449	437	7%	5,518	7%
	Parent	591	603	517	520	510	506	539	493	578	581	594	592	589	9%	7,213	9%
	Relative/Friend/Neighbor	553	568	418	406	468	393	491	484	540	546	604	595	592	9%	6,658	8%
	Anonymous	661	772	614	659	612	607	687	641	802	725	611	622	739	12%	8,752	11%
	CP&P	119	113	94	113	109	120	110	117	103	125	119	110	123	2%	1,475	2%
	Court/Legal	111	129	78	114	118	95	108	116	128	148	155	113	115	2%	1,528	2%
	Community Group/Individual	271	270	209	211	233	263	260	295	266	232	280	297	243	4%	3,330	4%
	Facility Staff (incl Correctional Facility)	72	92	82	89	107	79	71	106	76	89	92	105	78	1%	1,138	1%
	Child (Self)	63	47	42	46	40	35	39	37	49	41	44	67	47	1%	597	1%
	Other	342	354	293	308	291	298	328	332	353	330	327	344	348	6%	4,248	5%
	Daycare/Babysitter	17	16	8	13	15	14	17	12	17	17	11	23	17	0%	197	0%
<b>Total</b>		<b>6,166</b>	<b>7,095</b>	<b>5,670</b>	<b>5,956</b>	<b>5,940</b>	<b>5,919</b>	<b>6,767</b>	<b>6,351</b>	<b>7,018</b>	<b>6,323</b>	<b>5,413</b>	<b>5,234</b>	<b>6,271</b>		<b>80,123</b>	

**Table 4: Monthly Count of CPS Reports and CWS Referrals Assigned to Counties**

County														Average # of Assignments the Last 13 Months	Aug 15 to Sep 15 Numerical Difference
	Sep 2014	Oct 2014	Nov 2014	Dec 2014	Jan 2015	Feb 2015	Mar 2015	Apr 2015	May 2015	Jun 2015	Jul 2015	Aug 2015	September 2015		
Atlantic	233	292	234	245	233	210	269	277	275	239	218	227	295	250	68
Bergen	337	392	328	323	323	324	386	335	382	296	284	257	345	332	88
Burlington	251	335	238	277	269	305	285	319	322	274	263	284	307	287	23
Camden	537	594	502	464	487	505	534	506	551	552	449	438	516	510	78
Cape May	95	87	59	71	82	68	93	85	80	69	78	86	92	80	6
Cumberland	214	224	189	207	213	201	253	217	249	217	173	152	231	211	79
Essex	630	725	579	622	617	597	769	699	779	642	583	565	635	649	70
Gloucester	261	300	228	232	238	223	276	288	244	259	258	255	247	255	-8
Hudson	446	532	349	398	414	396	442	382	546	471	352	325	399	419	74
Hunterdon	50	47	33	65	30	52	45	50	51	47	48	38	58	47	20
Mercer	261	294	246	230	244	209	264	244	249	262	198	226	263	245	37
Middlesex	413	458	341	418	424	464	479	418	471	423	335	317	400	412	83
Monmouth	375	413	346	354	325	373	440	374	378	346	301	301	364	361	63
Morris	223	237	227	183	237	190	224	208	246	233	186	175	250	217	75
Ocean	384	456	387	381	374	364	398	402	418	388	376	369	376	390	7
Passaic	384	427	382	417	361	387	443	389	534	412	317	345	422	402	77
Salem	101	96	50	66	87	60	71	96	105	81	68	53	102	80	49
Somerset	139	152	134	132	126	131	153	154	178	163	158	128	155	146	27
Sussex	87	84	96	91	86	85	109	104	97	112	103	84	89	94	5
Union	286	354	311	288	322	278	360	307	299	305	228	215	276	295	61
Warren	93	113	87	102	97	119	92	101	117	102	89	94	101	101	7
<b>County Subtotals</b>	<b>5,800</b>	<b>6,612</b>	<b>5,346</b>	<b>5,566</b>	<b>5,589</b>	<b>5,541</b>	<b>6,385</b>	<b>5,955</b>	<b>6,571</b>	<b>5,893</b>	<b>5,065</b>	<b>4,934</b>	<b>5,923</b>	<b>5,783</b>	<b>989</b>
Central Region IAIU	55	70	54	61	48	50	50	51	54	54	24	41	53	51	12
Metro Region IAIU	47	70	45	49	53	58	67	54	70	66	56	30	36	54	6
Northern Region IAIU	58	80	47	67	62	61	73	70	80	65	61	43	45	62	2
Southern Region IAIU	64	85	59	89	60	68	68	78	97	88	63	59	60	72	1
<b>IAIU Subtotals</b>	<b>224</b>	<b>305</b>	<b>205</b>	<b>266</b>	<b>223</b>	<b>237</b>	<b>258</b>	<b>253</b>	<b>301</b>	<b>273</b>	<b>204</b>	<b>173</b>	<b>194</b>	<b>240</b>	<b>21</b>
<b>Unable to Determine<sup>1</sup></b>	<b>141</b>	<b>174</b>	<b>117</b>	<b>123</b>	<b>127</b>	<b>138</b>	<b>118</b>	<b>141</b>	<b>144</b>	<b>153</b>	<b>142</b>	<b>124</b>	<b>153</b>	<b>138</b>	<b>29</b>
<b>Other Offices</b>	<b>1</b>	<b>4</b>	<b>2</b>	<b>1</b>	<b>1</b>	<b>3</b>	<b>6</b>	<b>2</b>	<b>2</b>	<b>4</b>	<b>2</b>	<b>3</b>	<b>1</b>	<b>2</b>	<b>-2</b>
<b>Grand Total</b>	<b>6,166</b>	<b>7,095</b>	<b>5,670</b>	<b>5,956</b>	<b>5,940</b>	<b>5,919</b>	<b>6,767</b>	<b>6,351</b>	<b>7,018</b>	<b>6,323</b>	<b>5,413</b>	<b>5,234</b>	<b>6,271</b>	<b>6,163</b>	<b>1037</b>

<sup>1</sup>CPS Reports or CWS Referrals not assigned to an office through the Assignment Designee, but were assigned to an office for an assessment or investigation.





**Table 5: Monthly Count of CPS Reports and CWS Referrals Assigned to CP&P Local Offices**

County	Local Office	Type of Referral														Total
			Sep 2014	Oct 2014	Nov 2014	Dec 2014	Jan 2015	Feb 2015	Mar 2015	Apr 2015	May 2015	Jun 2015	Jul 2015	Aug 2015	Sep 2015	
ATLANTIC	Atlantic East	CPS	108	125	100	120	106	77	116	134	121	115	100	107	134	1,463
		CWS	23	35	36	24	29	26	32	32	38	24	30	26	35	390
		<b>Total</b>	<b>131</b>	<b>160</b>	<b>136</b>	<b>144</b>	<b>135</b>	<b>103</b>	<b>148</b>	<b>166</b>	<b>159</b>	<b>139</b>	<b>130</b>	<b>133</b>	<b>169</b>	<b>1,853</b>
	Atlantic West	CPS	82	103	75	77	76	85	101	86	96	81	72	77	94	1,105
		CWS	20	29	23	24	22	22	20	25	20	19	16	17	32	289
		<b>Total</b>	<b>102</b>	<b>132</b>	<b>98</b>	<b>101</b>	<b>98</b>	<b>107</b>	<b>121</b>	<b>111</b>	<b>116</b>	<b>100</b>	<b>88</b>	<b>94</b>	<b>126</b>	<b>1,394</b>
	County Totals	CPS	190	228	175	197	182	162	217	220	217	196	172	184	228	2,568
		CWS	43	64	59	48	51	48	52	57	58	43	46	43	67	679
		<b>Total</b>	<b>233</b>	<b>292</b>	<b>234</b>	<b>245</b>	<b>233</b>	<b>210</b>	<b>269</b>	<b>277</b>	<b>275</b>	<b>239</b>	<b>218</b>	<b>227</b>	<b>295</b>	<b>3,247</b>
BERGEN	Bergen Central	CPS	107	111	109	94	97	94	103	110	123	102	83	72	98	1,303
		CWS	38	51	49	39	39	32	37	36	34	32	29	29	36	481
		<b>Total</b>	<b>145</b>	<b>162</b>	<b>158</b>	<b>133</b>	<b>136</b>	<b>126</b>	<b>140</b>	<b>146</b>	<b>157</b>	<b>134</b>	<b>112</b>	<b>101</b>	<b>134</b>	<b>1,784</b>
	Bergen South	CPS	142	181	124	136	144	144	183	133	175	120	127	106	157	1,872
		CWS	50	49	46	54	43	54	63	56	50	42	45	50	54	656
		<b>Total</b>	<b>192</b>	<b>230</b>	<b>170</b>	<b>190</b>	<b>187</b>	<b>198</b>	<b>246</b>	<b>189</b>	<b>225</b>	<b>162</b>	<b>172</b>	<b>156</b>	<b>211</b>	<b>2,528</b>
	County Totals	CPS	249	292	233	230	241	238	286	243	298	222	210	178	255	3,175
		CWS	88	100	95	93	82	86	100	92	84	74	74	79	90	1,137
		<b>Total</b>	<b>337</b>	<b>392</b>	<b>328</b>	<b>323</b>	<b>323</b>	<b>324</b>	<b>386</b>	<b>335</b>	<b>382</b>	<b>296</b>	<b>284</b>	<b>257</b>	<b>345</b>	<b>4,312</b>
BURLINGTON	Burlington East	CPS	88	115	107	110	110	116	105	138	125	99	97	110	110	1,430
		CWS	32	38	25	30	25	33	29	28	37	26	38	36	36	413
		<b>Total</b>	<b>120</b>	<b>153</b>	<b>132</b>	<b>140</b>	<b>135</b>	<b>149</b>	<b>134</b>	<b>166</b>	<b>162</b>	<b>125</b>	<b>135</b>	<b>146</b>	<b>146</b>	<b>1,843</b>
	Burlington West	CPS	89	145	80	100	104	121	119	117	122	115	96	97	120	1,425
		CWS	42	37	26	37	30	35	32	36	38	34	32	41	41	461
		<b>Total</b>	<b>131</b>	<b>182</b>	<b>106</b>	<b>137</b>	<b>134</b>	<b>156</b>	<b>151</b>	<b>153</b>	<b>160</b>	<b>149</b>	<b>128</b>	<b>138</b>	<b>161</b>	<b>1,886</b>
	County Totals	CPS	177	260	187	210	214	237	224	255	247	214	193	207	230	2,855
		CWS	74	75	51	67	55	68	61	64	75	60	70	77	77	874
		<b>Total</b>	<b>251</b>	<b>335</b>	<b>238</b>	<b>277</b>	<b>269</b>	<b>305</b>	<b>285</b>	<b>319</b>	<b>322</b>	<b>274</b>	<b>263</b>	<b>284</b>	<b>307</b>	<b>3,729</b>
CAMDEN	Camden Central	CPS	109	151	100	103	123	123	127	115	122	121	105	93	116	1,508
		CWS	35	26	28	23	35	28	23	38	29	27	29	25	36	382
		<b>Total</b>	<b>144</b>	<b>177</b>	<b>128</b>	<b>126</b>	<b>158</b>	<b>151</b>	<b>150</b>	<b>163</b>	<b>151</b>	<b>148</b>	<b>134</b>	<b>118</b>	<b>152</b>	<b>1,890</b>
	Camden East	CPS	92	116	91	93	74	93	89	102	119	125	81	105	109	1,289
		CWS	46	37	39	24	31	19	30	31	30	30	30	28	21	396
		<b>Total</b>	<b>138</b>	<b>153</b>	<b>130</b>	<b>117</b>	<b>105</b>	<b>112</b>	<b>119</b>	<b>133</b>	<b>149</b>	<b>155</b>	<b>111</b>	<b>133</b>	<b>130</b>	<b>1,685</b>
	Camden North	CPS	95	122	105	73	89	85	106	89	101	116	82	77	95	1,235
		CWS	25	23	28	33	31	29	33	31	33	36	26	24	33	385
		<b>Total</b>	<b>120</b>	<b>145</b>	<b>133</b>	<b>106</b>	<b>120</b>	<b>114</b>	<b>139</b>	<b>120</b>	<b>134</b>	<b>152</b>	<b>108</b>	<b>101</b>	<b>128</b>	<b>1,620</b>
	Camden South	CPS	94	92	88	84	78	96	97	88	92	73	76	66	83	1,107
		CWS	41	27	23	31	26	32	29	12	25	24	20	20	23	333
		<b>Total</b>	<b>135</b>	<b>119</b>	<b>111</b>	<b>115</b>	<b>104</b>	<b>128</b>	<b>126</b>	<b>100</b>	<b>117</b>	<b>97</b>	<b>96</b>	<b>86</b>	<b>106</b>	<b>1,440</b>
	County Totals	CPS	390	481	384	353	364	397	419	394	434	435	344	341	403	5,139
		CWS	147	113	118	111	123	108	115	112	117	117	105	97	113	1,496
		<b>Total</b>	<b>537</b>	<b>594</b>	<b>502</b>	<b>464</b>	<b>487</b>	<b>505</b>	<b>534</b>	<b>506</b>	<b>551</b>	<b>552</b>	<b>449</b>	<b>438</b>	<b>516</b>	<b>6,635</b>
CAPE MAY	Cape May	CPS	74	73	47	54	63	54	78	63	66	57	63	69	72	833
		CWS	21	14	12	17	19	14	15	22	14	12	15	17	20	212
		<b>Total</b>	<b>95</b>	<b>87</b>	<b>59</b>	<b>71</b>	<b>82</b>	<b>68</b>	<b>93</b>	<b>85</b>	<b>80</b>	<b>69</b>	<b>78</b>	<b>86</b>	<b>92</b>	<b>1,045</b>
	County Totals	CPS	74	73	47	54	63	54	78	63	66	57	63	69	72	833
		CWS	21	14	12	17	19	14	15	22	14	12	15	17	20	212
		<b>Total</b>	<b>95</b>	<b>87</b>	<b>59</b>	<b>71</b>	<b>82</b>	<b>68</b>	<b>93</b>	<b>85</b>	<b>80</b>	<b>69</b>	<b>78</b>	<b>86</b>	<b>92</b>	<b>1,045</b>
CUMBERLAND	Cumberland East	CPS	55	69	56	43	51	52	63	50	70	66	33	36	61	705
		CWS	18	17	14	22	16	16	15	12	25	19	6	9	18	207
		<b>Total</b>	<b>73</b>	<b>86</b>	<b>70</b>	<b>65</b>	<b>67</b>	<b>68</b>	<b>78</b>	<b>62</b>	<b>95</b>	<b>85</b>	<b>39</b>	<b>45</b>	<b>79</b>	<b>912</b>
	Cumberland West	CPS	116	102	91	107	121	105	143	117	123	99	108	81	123	1,436
		CWS	25	36	28	35	25	28	32	38	31	33	26	26	29	392
		<b>Total</b>	<b>141</b>	<b>138</b>	<b>119</b>	<b>142</b>	<b>146</b>	<b>133</b>	<b>175</b>	<b>155</b>	<b>154</b>	<b>132</b>	<b>134</b>	<b>107</b>	<b>152</b>	<b>1,828</b>
	County Totals	CPS	171	171	147	150	172	157	206	167	193	165	141	117	184	2,141
		CWS	43	53	42	57	41	44	47	50	56	52	32	35	47	599
		<b>Total</b>	<b>214</b>	<b>224</b>	<b>189</b>	<b>207</b>	<b>213</b>	<b>201</b>	<b>253</b>	<b>217</b>	<b>249</b>	<b>217</b>	<b>173</b>	<b>152</b>	<b>231</b>	<b>2,740</b>

Data in this report is preliminary and may differ from any final report. This report is produced to ensure continuous quality improvement throughout DCF.



**Table 5: Monthly Count of CPS Reports and CWS Referrals Assigned to CP&P Local Offices**

County	Local Office	Type of Referral														Total
			Sep 2014	Oct 2014	Nov 2014	Dec 2014	Jan 2015	Feb 2015	Mar 2015	Apr 2015	May 2015	Jun 2015	Jul 2015	Aug 2015	Sep 2015	
ESSEX	Essex Central	CPS	84	104	73	77	97	68	92	105	118	81	76	85	80	1,140
		CWS	30	42	36	36	34	31	25	32	36	27	39	41	26	435
		<b>Total</b>	<b>114</b>	<b>146</b>	<b>109</b>	<b>113</b>	<b>131</b>	<b>99</b>	<b>117</b>	<b>137</b>	<b>154</b>	<b>108</b>	<b>115</b>	<b>126</b>	<b>106</b>	<b>1,575</b>
	Essex North	CPS	68	65	61	59	50	48	63	78	75	67	42	40	53	769
		CWS	21	25	20	16	14	23	26	20	20	23	18	17	22	265
		<b>Total</b>	<b>89</b>	<b>90</b>	<b>81</b>	<b>75</b>	<b>64</b>	<b>71</b>	<b>89</b>	<b>98</b>	<b>95</b>	<b>90</b>	<b>60</b>	<b>57</b>	<b>75</b>	<b>1,034</b>
	Essex South	CPS	50	61	48	61	70	70	95	75	71	51	49	49	66	816
		CWS	31	22	30	29	24	26	22	17	16	20	19	16	25	297
		<b>Total</b>	<b>81</b>	<b>83</b>	<b>78</b>	<b>90</b>	<b>94</b>	<b>96</b>	<b>117</b>	<b>92</b>	<b>87</b>	<b>71</b>	<b>68</b>	<b>65</b>	<b>91</b>	<b>1,113</b>
	Newark Center City	CPS	83	90	68	91	75	74	110	90	106	72	61	64	89	1,073
		CWS	33	40	28	24	19	21	33	15	40	27	23	29	29	361
		<b>Total</b>	<b>116</b>	<b>130</b>	<b>96</b>	<b>115</b>	<b>94</b>	<b>95</b>	<b>143</b>	<b>105</b>	<b>146</b>	<b>99</b>	<b>84</b>	<b>93</b>	<b>118</b>	<b>1,434</b>
	Newark Northeast	CPS	78	97	80	68	74	101	107	106	94	108	81	69	101	1,164
		CWS	27	28	25	40	36	27	45	27	34	28	31	26	25	399
		<b>Total</b>	<b>105</b>	<b>125</b>	<b>105</b>	<b>108</b>	<b>110</b>	<b>128</b>	<b>152</b>	<b>133</b>	<b>128</b>	<b>136</b>	<b>112</b>	<b>95</b>	<b>126</b>	<b>1,563</b>
	Newark South	CPS	93	124	80	88	94	81	120	97	127	102	113	94	88	1,301
		CWS	32	27	30	33	30	26	31	37	42	36	31	35	31	421
		<b>Total</b>	<b>125</b>	<b>151</b>	<b>110</b>	<b>121</b>	<b>124</b>	<b>107</b>	<b>151</b>	<b>134</b>	<b>169</b>	<b>138</b>	<b>144</b>	<b>129</b>	<b>119</b>	<b>1,722</b>
	County Totals	CPS	456	541	410	444	460	442	587	551	591	481	422	401	477	6,263
		CWS	174	184	169	178	157	154	182	148	188	161	161	164	158	2,178
		<b>Total</b>	<b>630</b>	<b>725</b>	<b>579</b>	<b>622</b>	<b>617</b>	<b>596</b>	<b>769</b>	<b>699</b>	<b>779</b>	<b>642</b>	<b>583</b>	<b>565</b>	<b>635</b>	<b>8,441</b>
GLOUCESTER	Gloucester East	CPS	90	101	85	85	95	96	110	114	88	85	85	98	98	1,230
		CWS	28	37	39	28	18	20	29	34	18	25	36	34	24	370
		<b>Total</b>	<b>118</b>	<b>138</b>	<b>124</b>	<b>113</b>	<b>113</b>	<b>116</b>	<b>139</b>	<b>148</b>	<b>106</b>	<b>110</b>	<b>121</b>	<b>132</b>	<b>122</b>	<b>1,600</b>
	Gloucester West	CPS	119	126	74	96	96	80	113	115	114	121	118	93	94	1,359
		CWS	24	36	30	23	29	27	24	25	24	28	19	30	31	350
		<b>Total</b>	<b>143</b>	<b>162</b>	<b>104</b>	<b>119</b>	<b>125</b>	<b>107</b>	<b>137</b>	<b>140</b>	<b>138</b>	<b>149</b>	<b>137</b>	<b>123</b>	<b>125</b>	<b>1,709</b>
	County Totals	CPS	209	227	159	181	191	176	223	229	202	206	203	191	192	2,589
		CWS	52	73	69	51	47	47	53	59	42	53	55	64	55	720
		<b>Total</b>	<b>261</b>	<b>300</b>	<b>228</b>	<b>232</b>	<b>238</b>	<b>223</b>	<b>276</b>	<b>288</b>	<b>244</b>	<b>259</b>	<b>258</b>	<b>255</b>	<b>247</b>	<b>3,309</b>
HUDSON	Hudson Central	CPS	76	94	49	56	73	84	90	89	112	88	71	60	62	1,004
		CWS	34	33	31	29	27	25	30	30	22	30	24	30	25	370
		<b>Total</b>	<b>110</b>	<b>127</b>	<b>80</b>	<b>85</b>	<b>100</b>	<b>109</b>	<b>120</b>	<b>119</b>	<b>134</b>	<b>118</b>	<b>95</b>	<b>90</b>	<b>87</b>	<b>1,374</b>
	Hudson North	CPS	90	99	53	74	69	70	73	65	107	96	60	54	91	1,001
		CWS	25	33	23	26	30	22	29	19	28	27	18	16	22	318
		<b>Total</b>	<b>115</b>	<b>132</b>	<b>76</b>	<b>100</b>	<b>99</b>	<b>92</b>	<b>102</b>	<b>84</b>	<b>135</b>	<b>123</b>	<b>78</b>	<b>70</b>	<b>113</b>	<b>1,319</b>
	Hudson South	CPS	88	95	59	88	77	80	87	70	103	93	79	71	66	1,056
		CWS	21	36	30	17	23	32	31	23	46	29	23	19	31	361
		<b>Total</b>	<b>109</b>	<b>131</b>	<b>89</b>	<b>105</b>	<b>100</b>	<b>112</b>	<b>118</b>	<b>93</b>	<b>149</b>	<b>122</b>	<b>102</b>	<b>90</b>	<b>97</b>	<b>1,417</b>
	Hudson West	CPS	87	113	85	81	86	65	77	71	103	77	57	55	77	1,034
		CWS	25	29	19	27	29	18	25	15	25	31	20	20	25	308
		<b>Total</b>	<b>112</b>	<b>142</b>	<b>104</b>	<b>108</b>	<b>115</b>	<b>83</b>	<b>102</b>	<b>86</b>	<b>128</b>	<b>108</b>	<b>77</b>	<b>75</b>	<b>102</b>	<b>1,342</b>
	County Totals	CPS	341	401	246	299	305	299	327	295	425	354	267	240	296	4,095
		CWS	105	131	103	99	109	97	115	87	121	117	85	85	103	1,357
		<b>Total</b>	<b>446</b>	<b>532</b>	<b>349</b>	<b>398</b>	<b>414</b>	<b>396</b>	<b>442</b>	<b>382</b>	<b>546</b>	<b>471</b>	<b>352</b>	<b>325</b>	<b>399</b>	<b>5,452</b>
HUNTERDON	Hunterdon	CPS	34	38	23	46	19	39	28	33	32	35	27	41	427	
		CWS	16	9	10	19	11	13	17	17	19	15	13	11	17	187
		<b>Total</b>	<b>50</b>	<b>47</b>	<b>33</b>	<b>65</b>	<b>30</b>	<b>52</b>	<b>45</b>	<b>50</b>	<b>51</b>	<b>47</b>	<b>48</b>	<b>38</b>	<b>58</b>	<b>614</b>
	County Totals	CPS	34	38	23	46	19	39	28	33	32	35	27	41	427	
		CWS	16	9	10	19	11	13	17	17	19	15	13	11	17	187
<b>Total</b>	<b>50</b>	<b>47</b>	<b>33</b>	<b>65</b>	<b>30</b>	<b>52</b>	<b>45</b>	<b>50</b>	<b>51</b>	<b>47</b>	<b>48</b>	<b>38</b>	<b>58</b>	<b>614</b>		
MERCER	Mercer North	CPS	89	123	96	81	97	78	82	98	94	92	70	82	87	1,169
		CWS	35	28	42	30	30	29	43	23	27	25	29	18	33	392
		<b>Total</b>	<b>124</b>	<b>151</b>	<b>138</b>	<b>111</b>	<b>127</b>	<b>107</b>	<b>125</b>	<b>121</b>	<b>121</b>	<b>117</b>	<b>99</b>	<b>100</b>	<b>120</b>	<b>1,561</b>
	Mercer South	CPS	112	117	88	96	87	75	110	94	96	103	76	107	107	1,268
		CWS	25	26	20	23	30	27	29	29	32	42	23	19	36	361
		<b>Total</b>	<b>137</b>	<b>143</b>	<b>108</b>	<b>119</b>	<b>117</b>	<b>102</b>	<b>139</b>	<b>123</b>	<b>128</b>	<b>145</b>	<b>99</b>	<b>126</b>	<b>143</b>	<b>1,629</b>
	County Totals	CPS	201	240	184	177	184	153	192	192	190	195	146	189	194	2,437
		CWS	60	54	62	53	60	56	72	52	59	67	52	37	69	753
<b>Total</b>		<b>261</b>	<b>294</b>	<b>246</b>	<b>230</b>	<b>244</b>	<b>209</b>	<b>264</b>	<b>244</b>	<b>249</b>	<b>262</b>	<b>198</b>	<b>226</b>	<b>263</b>	<b>3,190</b>	

Data in this report is preliminary and may differ from any final report. This report is produced to ensure continuous quality improvement throughout DCF.



**Table 5: Monthly Count of CPS Reports and CWS Referrals Assigned to CP&P Local Offices**

County	Local Office	Type of Referral														Total
			Sep 2014	Oct 2014	Nov 2014	Dec 2014	Jan 2015	Feb 2015	Mar 2015	Apr 2015	May 2015	Jun 2015	Jul 2015	Aug 2015	Sep 2015	
MIDDLESEX	Middlesex Central	CPS	81	90	54	64	77	75	83	85	89	65	52	56	86	957
		CWS	22	24	14	24	27	16	20	21	27	17	25	18	28	283
		<b>Total</b>	<b>103</b>	<b>114</b>	<b>68</b>	<b>88</b>	<b>104</b>	<b>91</b>	<b>103</b>	<b>106</b>	<b>116</b>	<b>82</b>	<b>77</b>	<b>74</b>	<b>114</b>	<b>1,240</b>
	Middlesex Coastal	CPS	103	137	105	121	131	135	154	122	151	128	101	105	110	1,603
		CWS	47	38	36	37	32	46	49	34	37	44	43	24	33	500
		<b>Total</b>	<b>150</b>	<b>175</b>	<b>141</b>	<b>158</b>	<b>163</b>	<b>181</b>	<b>203</b>	<b>156</b>	<b>188</b>	<b>172</b>	<b>144</b>	<b>129</b>	<b>143</b>	<b>2,103</b>
	Middlesex West	CPS	119	134	86	124	129	155	139	122	138	132	94	84	105	1,561
		CWS	41	35	46	48	28	37	34	34	29	37	20	30	38	457
		<b>Total</b>	<b>160</b>	<b>169</b>	<b>132</b>	<b>172</b>	<b>157</b>	<b>192</b>	<b>173</b>	<b>156</b>	<b>167</b>	<b>169</b>	<b>114</b>	<b>114</b>	<b>143</b>	<b>2,018</b>
	County Totals	CPS	303	361	245	309	337	365	376	329	378	325	247	245	301	4,121
CWS		110	97	96	109	87	99	103	89	93	98	88	72	99	1,240	
<b>Total</b>		<b>413</b>	<b>458</b>	<b>341</b>	<b>418</b>	<b>424</b>	<b>464</b>	<b>479</b>	<b>418</b>	<b>471</b>	<b>423</b>	<b>335</b>	<b>317</b>	<b>400</b>	<b>5,361</b>	
MONMOUTH	Monmouth North	CPS	156	169	141	142	153	158	181	156	164	152	129	119	159	1,979
		CWS	45	49	32	50	30	50	47	40	43	39	37	33	58	553
		<b>Total</b>	<b>201</b>	<b>218</b>	<b>173</b>	<b>192</b>	<b>183</b>	<b>208</b>	<b>228</b>	<b>196</b>	<b>207</b>	<b>191</b>	<b>166</b>	<b>152</b>	<b>217</b>	<b>2,532</b>
	Monmouth South	CPS	134	153	129	118	109	122	171	146	128	125	108	111	118	1,672
		CWS	40	42	44	44	33	43	41	32	43	30	27	38	29	486
		<b>Total</b>	<b>174</b>	<b>195</b>	<b>173</b>	<b>162</b>	<b>142</b>	<b>165</b>	<b>212</b>	<b>178</b>	<b>171</b>	<b>155</b>	<b>135</b>	<b>149</b>	<b>147</b>	<b>2,158</b>
	County Totals	CPS	290	322	270	260	262	280	352	302	292	277	237	230	277	3,651
		CWS	85	91	76	94	63	93	88	72	86	69	64	71	87	1,039
		<b>Total</b>	<b>375</b>	<b>413</b>	<b>346</b>	<b>354</b>	<b>325</b>	<b>373</b>	<b>440</b>	<b>374</b>	<b>378</b>	<b>346</b>	<b>301</b>	<b>301</b>	<b>364</b>	<b>4,690</b>
	MORRIS	Morris East	CPS	87	80	69	62	70	70	80	84	74	74	61	59	85
CWS			19	24	28	25	30	21	28	21	23	22	27	20	29	317
<b>Total</b>			<b>106</b>	<b>104</b>	<b>97</b>	<b>87</b>	<b>100</b>	<b>91</b>	<b>108</b>	<b>105</b>	<b>97</b>	<b>96</b>	<b>88</b>	<b>79</b>	<b>114</b>	<b>1,272</b>
Morris West		CPS	85	108	91	67	101	83	84	70	102	92	69	74	100	1,126
		CWS	32	25	39	29	36	16	32	33	47	45	29	22	36	421
		<b>Total</b>	<b>117</b>	<b>133</b>	<b>130</b>	<b>96</b>	<b>137</b>	<b>99</b>	<b>116</b>	<b>103</b>	<b>149</b>	<b>137</b>	<b>98</b>	<b>96</b>	<b>136</b>	<b>1,547</b>
County Totals		CPS	172	188	160	129	171	153	164	154	176	166	130	133	185	2,081
		CWS	51	49	67	54	66	37	60	54	70	67	56	42	65	738
		<b>Total</b>	<b>223</b>	<b>237</b>	<b>227</b>	<b>183</b>	<b>237</b>	<b>190</b>	<b>224</b>	<b>208</b>	<b>246</b>	<b>233</b>	<b>186</b>	<b>175</b>	<b>250</b>	<b>2,819</b>
OCEAN		Ocean North	CPS	139	132	147	126	113	144	132	149	144	145	120	119	118
	CWS		36	46	42	39	32	36	54	45	52	38	34	39	43	536
	<b>Total</b>		<b>175</b>	<b>178</b>	<b>189</b>	<b>165</b>	<b>145</b>	<b>180</b>	<b>186</b>	<b>194</b>	<b>196</b>	<b>183</b>	<b>154</b>	<b>158</b>	<b>161</b>	<b>2,264</b>
	Ocean South	CPS	160	226	161	168	178	144	171	161	172	167	178	171	170	2,227
		CWS	49	52	37	48	51	40	41	47	50	38	44	40	45	582
		<b>Total</b>	<b>209</b>	<b>278</b>	<b>198</b>	<b>216</b>	<b>229</b>	<b>184</b>	<b>212</b>	<b>208</b>	<b>222</b>	<b>205</b>	<b>222</b>	<b>211</b>	<b>215</b>	<b>2,809</b>
	County Totals	CPS	299	358	308	294	291	288	303	310	316	312	298	290	288	3,955
		CWS	85	98	79	87	83	76	95	92	102	76	78	79	88	1,118
		<b>Total</b>	<b>384</b>	<b>456</b>	<b>387</b>	<b>381</b>	<b>374</b>	<b>364</b>	<b>398</b>	<b>402</b>	<b>418</b>	<b>388</b>	<b>376</b>	<b>369</b>	<b>376</b>	<b>5,073</b>
	PASSAIC	Passaic Central	CPS	140	182	161	179	132	149	161	143	221	152	118	133	159
CWS			53	53	53	59	44	45	77	63	67	58	52	55	55	734
<b>Total</b>			<b>193</b>	<b>235</b>	<b>214</b>	<b>238</b>	<b>176</b>	<b>194</b>	<b>238</b>	<b>206</b>	<b>288</b>	<b>210</b>	<b>170</b>	<b>188</b>	<b>214</b>	<b>2,764</b>
Passaic North		CPS	153	141	119	140	128	148	138	137	190	151	116	123	142	1,826
		CWS	38	51	49	39	57	45	67	46	56	51	31	34	66	630
		<b>Total</b>	<b>191</b>	<b>192</b>	<b>168</b>	<b>179</b>	<b>185</b>	<b>193</b>	<b>205</b>	<b>183</b>	<b>246</b>	<b>202</b>	<b>147</b>	<b>157</b>	<b>208</b>	<b>2,456</b>
County Totals		CPS	293	323	280	319	260	297	299	280	411	303	234	256	301	3,856
		CWS	91	104	102	98	101	90	144	109	123	109	83	89	121	1,364
		<b>Total</b>	<b>384</b>	<b>427</b>	<b>382</b>	<b>417</b>	<b>361</b>	<b>387</b>	<b>443</b>	<b>389</b>	<b>534</b>	<b>412</b>	<b>317</b>	<b>345</b>	<b>422</b>	<b>5,220</b>
SALEM		Salem	CPS	82	80	41	52	64	47	52	84	78	66	51	35	77
	CWS		19	16	9	14	23	13	19	12	27	15	17	18	25	227
	<b>Total</b>		<b>101</b>	<b>96</b>	<b>50</b>	<b>66</b>	<b>87</b>	<b>60</b>	<b>71</b>	<b>96</b>	<b>105</b>	<b>81</b>	<b>68</b>	<b>53</b>	<b>102</b>	<b>1,036</b>
	County Totals	CPS	82	80	41	52	64	47	52	84	78	66	51	35	77	809
		CWS	19	16	9	14	23	13	19	12	27	15	17	18	25	227
		<b>Total</b>	<b>101</b>	<b>96</b>	<b>50</b>	<b>66</b>	<b>87</b>	<b>60</b>	<b>71</b>	<b>96</b>	<b>105</b>	<b>81</b>	<b>68</b>	<b>53</b>	<b>102</b>	<b>1,036</b>
SOMERSET	Somerset	CPS	110	116	95	98	100	101	111	117	131	122	126	88	120	1,435
		CWS	29	36	39	34	26	30	42	37	47	41	32	40	35	468
		<b>Total</b>	<b>139</b>	<b>152</b>	<b>134</b>	<b>132</b>	<b>126</b>	<b>131</b>	<b>153</b>	<b>154</b>	<b>178</b>	<b>163</b>	<b>158</b>	<b>128</b>	<b>155</b>	<b>1,903</b>
	County Totals	CPS	110	116	95	98	100	101	111	117	131	122	126	88	120	1,435
		CWS	29	36	39	34	26	30	42	37	47	41	32	40	35	468
		<b>Total</b>	<b>139</b>	<b>152</b>	<b>134</b>	<b>132</b>	<b>126</b>	<b>131</b>	<b>153</b>	<b>154</b>	<b>178</b>	<b>163</b>	<b>158</b>	<b>128</b>	<b>155</b>	<b>1,903</b>

Data in this report is preliminary and may differ from any final report. This report is produced to ensure continuous quality improvement throughout DCF.

**Table 5: Monthly Count of CPS Reports and CWS Referrals Assigned to CP&P Local Offices**

County	Local Office	Type of Referral														Total	
			Sep 2014	Oct 2014	Nov 2014	Dec 2014	Jan 2015	Feb 2015	Mar 2015	Apr 2015	May 2015	Jun 2015	Jul 2015	Aug 2015	Sep 2015		
SUSSEX	Sussex	CPS	59	60	71	70	66	64	80	84	74	77	86	71	73	935	
		CWS	28	24	25	21	20	21	29	20	23	35	17	13	16	292	
		<b>Total</b>	<b>87</b>	<b>84</b>	<b>96</b>	<b>91</b>	<b>86</b>	<b>85</b>	<b>109</b>	<b>104</b>	<b>97</b>	<b>112</b>	<b>103</b>	<b>84</b>	<b>89</b>	<b>1,227</b>	
	County Totals	CPS	59	60	71	70	66	64	80	84	74	77	86	71	73	935	
		CWS	28	24	25	21	20	21	29	20	23	35	17	13	16	292	
		<b>Total</b>	<b>87</b>	<b>84</b>	<b>96</b>	<b>91</b>	<b>86</b>	<b>85</b>	<b>109</b>	<b>104</b>	<b>97</b>	<b>112</b>	<b>103</b>	<b>84</b>	<b>89</b>	<b>1,227</b>	
UNION	Union Central	CPS	63	94	81	67	91	75	86	81	85	83	56	52	65	979	
		CWS	21	37	17	15	21	19	30	21	19	20	25	26	24	295	
		<b>Total</b>	<b>84</b>	<b>131</b>	<b>98</b>	<b>82</b>	<b>112</b>	<b>94</b>	<b>116</b>	<b>102</b>	<b>104</b>	<b>103</b>	<b>81</b>	<b>78</b>	<b>89</b>	<b>1,274</b>	
	Union East	CPS	69	94	83	82	72	73	92	85	69	80	51	49	67	966	
		CWS	28	26	28	27	34	24	43	27	33	32	8	23	27	360	
		<b>Total</b>	<b>97</b>	<b>120</b>	<b>111</b>	<b>109</b>	<b>106</b>	<b>97</b>	<b>135</b>	<b>112</b>	<b>102</b>	<b>112</b>	<b>59</b>	<b>72</b>	<b>94</b>	<b>1,326</b>	
	Union West	CPS	83	78	80	69	75	66	81	64	71	62	59	50	70	908	
		CWS	22	25	22	28	29	21	28	29	22	28	29	15	23	321	
		<b>Total</b>	<b>105</b>	<b>103</b>	<b>102</b>	<b>97</b>	<b>104</b>	<b>87</b>	<b>109</b>	<b>93</b>	<b>93</b>	<b>90</b>	<b>88</b>	<b>65</b>	<b>93</b>	<b>1,229</b>	
	County Totals	CPS	215	266	244	218	238	214	259	230	225	225	166	151	202	2,853	
		CWS	71	88	67	70	84	64	101	77	74	80	62	64	74	976	
		<b>Total</b>	<b>286</b>	<b>354</b>	<b>311</b>	<b>288</b>	<b>322</b>	<b>278</b>	<b>360</b>	<b>307</b>	<b>299</b>	<b>305</b>	<b>228</b>	<b>215</b>	<b>276</b>	<b>3,829</b>	
	WARREN	Warren	CPS	72	96	64	74	68	87	66	82	84	78	71	81	994	
			CWS	21	17	23	28	29	32	26	19	33	24	18	23	20	313
			<b>Total</b>	<b>93</b>	<b>113</b>	<b>87</b>	<b>102</b>	<b>97</b>	<b>119</b>	<b>92</b>	<b>101</b>	<b>117</b>	<b>102</b>	<b>89</b>	<b>94</b>	<b>101</b>	<b>1,307</b>
County Totals		CPS	72	96	64	74	68	87	66	82	84	78	71	71	81	994	
		CWS	21	17	23	28	29	32	26	19	33	24	18	23	20	313	
		<b>Total</b>	<b>93</b>	<b>113</b>	<b>87</b>	<b>102</b>	<b>97</b>	<b>119</b>	<b>92</b>	<b>101</b>	<b>117</b>	<b>102</b>	<b>89</b>	<b>94</b>	<b>101</b>	<b>1,307</b>	
<b>County CPS Referral Total</b>	CPS	<b>4,387</b>	<b>5,122</b>	<b>3,973</b>	<b>4,164</b>	<b>4,252</b>	<b>4,250</b>	<b>4,849</b>	<b>4,614</b>	<b>5,060</b>	<b>4,508</b>	<b>3,842</b>	<b>3,714</b>	<b>4,477</b>	<b>57,212</b>		
<b>County CWS Referral Total</b>	CWS	<b>1,413</b>	<b>1,490</b>	<b>1,373</b>	<b>1,402</b>	<b>1,337</b>	<b>1,290</b>	<b>1,536</b>	<b>1,341</b>	<b>1,511</b>	<b>1,385</b>	<b>1,223</b>	<b>1,220</b>	<b>1,446</b>	<b>17,967</b>		
<b>County Referral Total</b>	<b>Total</b>	<b>5,800</b>	<b>6,612</b>	<b>5,346</b>	<b>5,566</b>	<b>5,589</b>	<b>5,540</b>	<b>6,385</b>	<b>5,955</b>	<b>6,571</b>	<b>5,893</b>	<b>5,065</b>	<b>4,934</b>	<b>5,923</b>	<b>75,179</b>		
Central Region IAIU	CPS	55	70	54	61	48	50	50	51	54	54	63	41	53	704		
	CWS	0	0	0	0	0	0	0	0	0	0	0	0	0	0		
	<b>Total</b>	<b>55</b>	<b>70</b>	<b>54</b>	<b>61</b>	<b>48</b>	<b>50</b>	<b>50</b>	<b>51</b>	<b>54</b>	<b>54</b>	<b>63</b>	<b>41</b>	<b>53</b>	<b>704</b>		
Metro Region IAIU	CPS	47	70	45	49	53	59	67	54	70	66	24	30	36	670		
	CWS	0	1	0	0	0	0	0	0	0	0	0	0	0	1		
	<b>Total</b>	<b>47</b>	<b>71</b>	<b>45</b>	<b>49</b>	<b>53</b>	<b>59</b>	<b>67</b>	<b>54</b>	<b>70</b>	<b>66</b>	<b>24</b>	<b>30</b>	<b>36</b>	<b>671</b>		
Northern Region IAIU	CPS	58	80	47	67	62	61	73	70	80	65	56	43	45	807		
	CWS	0	0	0	0	0	0	0	0	0	0	0	0	0	0		
	<b>Total</b>	<b>58</b>	<b>80</b>	<b>47</b>	<b>67</b>	<b>62</b>	<b>61</b>	<b>73</b>	<b>70</b>	<b>80</b>	<b>65</b>	<b>56</b>	<b>43</b>	<b>45</b>	<b>807</b>		
Southern Region IAIU	CPS	64	85	59	89	60	68	68	78	97	88	61	59	60	936		
	CWS	0	0	0	0	0	0	0	0	0	0	0	0	0	0		
	<b>Total</b>	<b>64</b>	<b>85</b>	<b>59</b>	<b>89</b>	<b>60</b>	<b>68</b>	<b>68</b>	<b>78</b>	<b>97</b>	<b>88</b>	<b>61</b>	<b>59</b>	<b>60</b>	<b>936</b>		
<b>IAIU CPS Subtotal</b>	CPS	<b>224</b>	<b>305</b>	<b>205</b>	<b>266</b>	<b>223</b>	<b>238</b>	<b>258</b>	<b>253</b>	<b>301</b>	<b>273</b>	<b>204</b>	<b>173</b>	<b>194</b>	<b>3,117</b>		
<b>IAIU CWS Subtotal</b>	CWS	<b>1</b>	<b>0</b>	<b>0</b>	<b>0</b>	<b>0</b>	<b>0</b>	<b>0</b>	<b>0</b>	<b>0</b>	<b>0</b>	<b>0</b>	<b>0</b>	<b>0</b>	<b>1</b>		
<b>IAIU Subtotal</b>	<b>Total</b>	<b>225</b>	<b>305</b>	<b>205</b>	<b>266</b>	<b>223</b>	<b>238</b>	<b>258</b>	<b>253</b>	<b>301</b>	<b>273</b>	<b>204</b>	<b>173</b>	<b>194</b>	<b>3,118</b>		
<b>County and IAIU CPS Subtotal</b>	CPS	<b>4,611</b>	<b>5,427</b>	<b>4,178</b>	<b>4,430</b>	<b>4,475</b>	<b>4,488</b>	<b>5,107</b>	<b>4,867</b>	<b>5,361</b>	<b>4,781</b>	<b>4,046</b>	<b>3,887</b>	<b>4,671</b>	<b>60,329</b>		
<b>County and IAIU CWS Subtotal</b>	CWS	<b>1,414</b>	<b>1,490</b>	<b>1,373</b>	<b>1,402</b>	<b>1,337</b>	<b>1,290</b>	<b>1,536</b>	<b>1,341</b>	<b>1,511</b>	<b>1,385</b>	<b>1,223</b>	<b>1,220</b>	<b>1,446</b>	<b>17,968</b>		
<b>Unable to Determine<sup>(1)</sup></b>	<b>Total</b>	<b>141</b>	<b>174</b>	<b>117</b>	<b>123</b>	<b>127</b>	<b>138</b>	<b>118</b>	<b>141</b>	<b>144</b>	<b>153</b>	<b>142</b>	<b>124</b>	<b>153</b>	<b>1,795</b>		
<b>Other Offices</b>	<b>Total</b>	<b>0</b>	<b>4</b>	<b>2</b>	<b>1</b>	<b>1</b>	<b>3</b>	<b>6</b>	<b>2</b>	<b>2</b>	<b>4</b>	<b>2</b>	<b>3</b>	<b>1</b>	<b>31</b>		
<b>Grand Total</b>	<b>Total</b>	<b>6,166</b>	<b>7,095</b>	<b>5,670</b>	<b>5,956</b>	<b>5,940</b>	<b>5,919</b>	<b>6,767</b>	<b>6,351</b>	<b>7,018</b>	<b>6,323</b>	<b>5,413</b>	<b>5,234</b>	<b>6,271</b>	<b>80,123</b>		

<sup>(1)</sup>CPS Reports or CWS Referrals not assigned to an office through the Assignment Designee, but were assigned to an office for an assessment<sup>5234</sup>