



Child Protection and Permanency

Monthly Screening and Investigation Report July 2015

Allison Blake, Ph.D., L.S.W.
Commissioner

August 20, 2015



Table of Contents

Table 1: NJ State Central Registry Activity: Monthly Child Abuse and Neglect Hotline Calls, Intakes and Assignments to Child Protection & Permanency (CP&P) Offices

Chart 1: CP&P Annual Trends in Child Protection Services (CPS) Reports and Child Welfare Services (CWS) Referrals

Table 2: Assignments to CP&P Offices: CPS Reports and CWS Referrals

Table 3: Source of CPS Reports and CWS Referrals

Table 4: Monthly Count of CPS Reports and CWS Referrals Assigned to Counties

Table 5: Monthly Count of CPS Reports and CWS Referrals Assigned to CP&P Local Offices

Table 1: NJ State Central Registry Activity: Monthly Child Abuse and Neglect Hotline Calls, Intakes and Assignments to CP&P Offices^{1,2,7}

2014 - 2015	Hotline Call Activity				Intakes Recorded in NJ SPIRIT ^{6,8}												Assignments to CP&P Offices				
	Total Calls to SCR ³	Abandon Calls ⁴	Average Time to Answer (seconds)	Resulting NJS Intakes ⁵	CPS Reports		CWS Referrals		No Action Required (NAR)		Related Information (RI)		Information & Referral (I&R)		Information Only (IO)		CPS Reports		CWS Referrals		Total
					n	%	n	%	n	%	n	%	n	%	n	%	n	%	n	%	
July 2014	12,308	344	21	13,784	4,202	30.5%	1,247	9.0%	384	2.8%	3,758	27.3%	1,487	10.8%	2,706	19.6%	4,202	77.1%	1,247	22.9%	5,449
August 2014	11,306	277	17	12,610	3,629	28.8%	1,222	9.7%	331	2.6%	3,314	26.3%	1,321	10.5%	2,793	22.1%	3,629	74.8%	1,222	25.2%	4,851
September 2014	13,664	359	22	15,190	4,668	30.7%	1,496	9.8%	393	2.6%	3,949	26.0%	1,792	11.8%	2,892	19.0%	4,668	75.7%	1,498	24.3%	6,166
October 2014	15,268	435	26	16,868	5,510	32.7%	1,584	9.4%	555	3.3%	4,259	25.2%	1,946	11.5%	3,014	17.9%	5,509	77.6%	1,586	22.4%	7,095
November 2014	12,649	391	28	13,938	4,254	30.5%	1,416	10.2%	297	2.1%	3,895	27.9%	1,473	10.6%	2,603	18.7%	4,254	75.0%	1,416	25.0%	5,670
December 2014	13,289	468	29	14,588	4,511	30.9%	1,449	9.9%	303	2.1%	3,888	26.7%	1,620	11.1%	2,817	19.3%	4,509	75.7%	1,447	24.3%	5,956
January 2015	13,991	761	34	15,030	4,549	30.3%	1,390	9.2%	387	2.6%	3,939	26.2%	1,591	10.6%	3,174	21.1%	4,549	76.6%	1,391	23.4%	5,940
February 2015	12,881	537	35	14,010	4,573	32.6%	1,342	9.6%	418	3.0%	3,494	24.9%	1,516	10.8%	2,667	19.0%	4,574	77.3%	1,345	22.7%	5,919
March 2015	14,805	486	30	16,174	5,187	32.1%	1,580	9.8%	363	2.2%	4,021	24.9%	1,811	11.2%	3,212	19.9%	5,187	76.7%	1,580	23.3%	6,767
April 2015	13,698	409	26	15,107	4,967	32.9%	1,381	9.1%	366	2.4%	3,900	25.8%	1,615	10.7%	2,878	19.1%	4,967	78.2%	1,384	21.8%	6,351
May 2015	15,466	583	39	16,769	5,457	32.5%	1,560	9.3%	340	2.0%	4,437	26.5%	1,874	11.2%	3,101	18.5%	5,457	77.8%	1,561	22.2%	7,018
June 2015	13,760	405	29	15,189	4,887	32.2%	1,436	9.5%	373	2.5%	3,981	26.2%	1,659	10.9%	2,853	18.8%	4,887	77.3%	1,436	22.7%	6,323
July 2015	12,132	380	20	13,624	4,140	30.4%	1,273	9.3%	442	3.2%	3,569	26.2%	1,416	10.4%	2,784	20.4%	4,140	76.5%	1,273	23.5%	5,413
Monthly Average	13,478	449	27	14,837	4,656	31.4%	1,414	9.5%	381	2.6%	3,877	26.1%	1,625	11.0%	2,884	19.4%	4,656	76.7%	1,414	23.3%	6,071
Overall Total	175,217	5,835		192,881	60,534		18,376		4,952		50,404		21,121		37,494		60,532	76.7%	18,386	23.3%	78,918

¹Comes from three distinct sources: (1) the Automatic Call Distribution (ACD) phone system; which keeps a count of the number of calls and call routing; (2) Monthly NJSpirit Intakes; which record decision making on calls received by hotline screeners, and (3) NJSpirit extracts of assigned CWS Referrals and CPS Reports.

²The number of Intakes, CPS Reports, and CWS Referrals are based on an extract from NJSpirit. Data extracted by the Office of Research, Evaluation, and Reporting on **August 10, 2015** includes all Intakes, CPS Reports, and CWS Referrals received from **July 1, 2015 through July 31, 2015**.

³The number calls received through the ACD System that were directed to a screener from any call-in phone number.

⁴The number of calls received through the ACD System that are abandoned either while waiting in queue or while ringing.

⁵The number of Intakes entered in NJSpirit from the number of calls received.

⁶The number of Intakes recorded in NJSpirit, by type of Intake. There is not a one-to-one relationship between an ACD call and an Intake; multiple calls to State Central Registry (SCR) may result in a single Intake, or one call may result in multiple Intakes.

⁷Intake: The process of documenting: a report of alleged abuse or neglect of a child (CPS); a request for services on behalf of a child, or a referral of a child for services (CWS); a call in which the caller provides additional or clarifying information about a current service case or active investigation (RI); informing a caller of, or referring a caller to, services available from other private or public sources (I&R); a call that requires no action by CP&P (NAR); or a response to a simple inquiry (IO).

⁸NJ SPIRIT: NJ Statewide Protection Investigation and Reporting Information Tool case management system

CP&P Annual Trends in CPS Reports and CWS Referrals

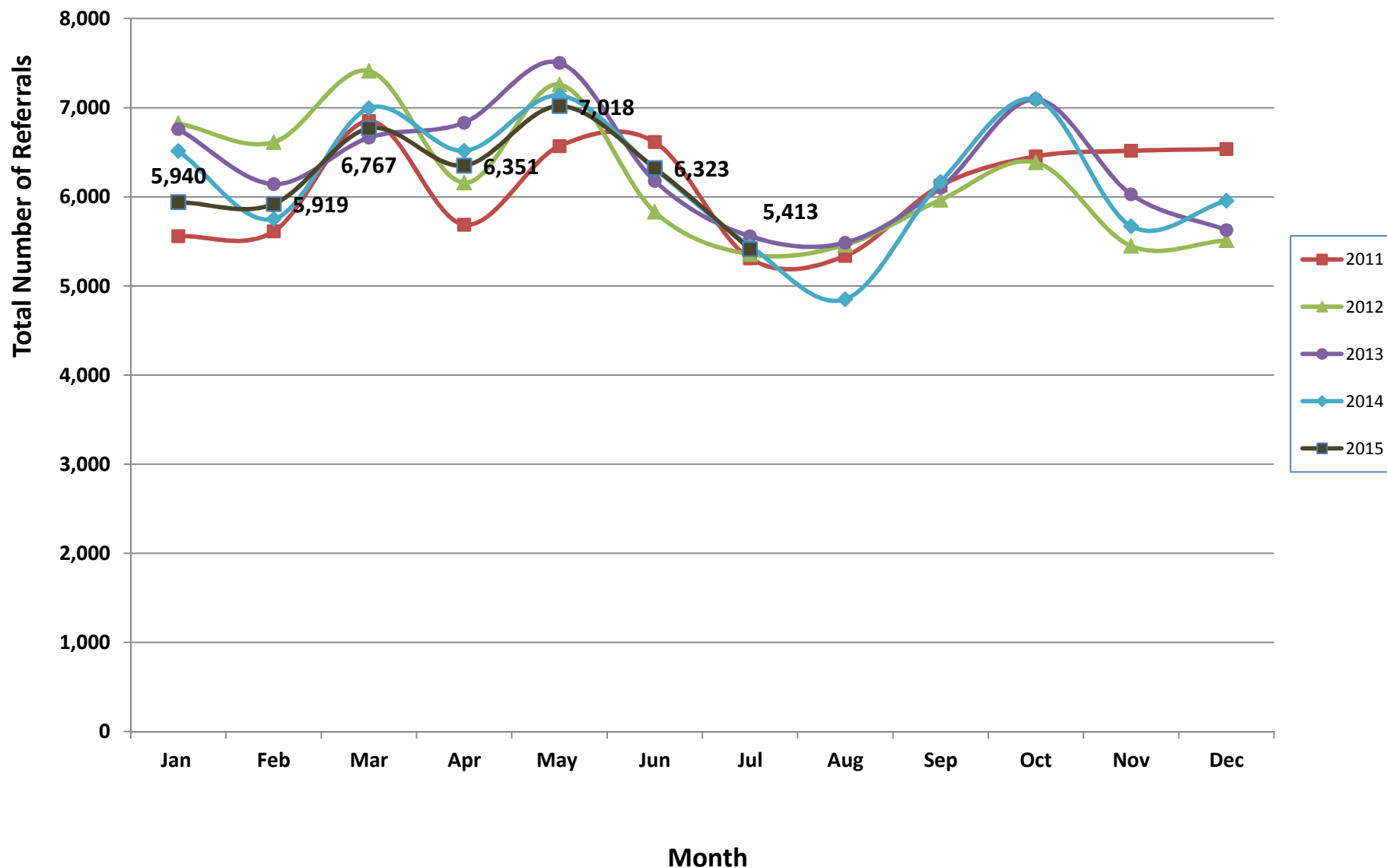


Table 2: Assignments to CP&P Offices: CPS Reports and CWS Referrals¹

Intake Date ³		CPS Reports ²	CWS Referrals ²	Total Assignments ²
2010	Jan 2010	5,154	963	6,117
	Feb 2010	4,446	804	5,250
	Mar 2010	6,314	1,147	7,461
	Apr 2010	5,465	1,040	6,505
	May 2010	5,797	1,177	6,974
	Jun 2010	5,734	1,157	6,891
	Jul 2010	4,270	1,017	5,287
	Aug 2010	4,110	1,028	5,138
	Sep 2010	4,922	1,012	5,934
	Oct 2010	5,105	1,136	6,241
	Nov 2010	4,842	1,028	5,870
	Dec 2010	4,472	909	5,381
	Total	60,631	12,418	73,049
2011	Jan 2011	4,616	942	5,558
	Feb 2011	4,672	939	5,611
	Mar 2011	5,701	1,148	6,849
	Apr 2011	4,682	1,005	5,687
	May 2011	5,362	1,207	6,569
	Jun 2011	5,299	1,315	6,614
	Jul 2011	4,200	1,108	5,308
	Aug 2011	4,170	1,166	5,336
	Sep 2011	4,872	1,253	6,125
	Oct 2011	5,322	1,132	6,454
	Nov 2011	5,220	1,296	6,516
	Dec 2011	5,363	1,173	6,536
	Total	59,479	13,684	73,163
2012	Jan 2012	5,530	1,294	6,824
	Feb 2012	5,358	1,255	6,613
	Mar 2012	5,985	1,428	7,413
	Apr 2012	4,899	1,259	6,158
	May 2012	5,874	1,385	7,259
	Jun 2012	4,640	1,190	5,830
	Jul 2012	4,254	1,101	5,355
	Aug 2012	4,325	1,135	5,460
	Sep 2012	4,769	1,196	5,965
	Oct 2012	5,178	1,207	6,385
	Nov 2012	4,310	1,138	5,448
	Dec 2012	4,394	1,116	5,510
	Total	59,516	14,704	74,220

Table 2: Assignments to CP&P Offices: CPS Reports and CWS Referrals¹

Intake Date ³		CPS Reports ²	CWS Referrals ²	Total Assignments ²
2013	Jan 2013	5,464	1,296	6,760
	Feb 2013	4,966	1,177	6,143
	Mar 2013	5,355	1,309	6,664
	Apr 2013	5,430	1,402	6,832
	May 2013	5,993	1,510	7,503
	Jun 2013	4,947	1,230	6,177
	Jul 2013	4,330	1,228	5,558
	Aug 2013	4,330	1,155	5,485
	Sep 2013	4,851	1,251	6,102
	Oct 2013	5,614	1,481	7,095
	Nov 2013	4,694	1,334	6,028
	Dec 2013	4,397	1,229	5,626
	Total	60,371	15,602	75,973
2014	Jan 2014	5,097	1,416	6,513
	Feb 2014	4,457	1,295	5,752
	Mar 2014	5,408	1,586	6,994
	Apr 2014	5,049	1,467	6,516
	May 2014	5,501	1,635	7,136
	Jun 2014	4,796	1,517	6,313
	Jul 2014	4,202	1,247	5,449
	Aug 2014	3,629	1,222	4,851
	Sep 2014	4,668	1,498	6,166
	Oct 2014	5,509	1,586	7,095
	Nov 2014	4,254	1,416	5,670
	Dec 2014	4,509	1,447	5,956
	Total	57,079	17,332	74,411
2015	Jan 2015	4,549	1,391	5,940
	Feb 2015	4,574	1,345	5,919
	Mar 2015	5,187	1,580	6,767
	Apr 2015	4,967	1,384	6,351
	May 2015	5,457	1,561	7,018
	Jun 2015	4,887	1,436	6,323
	July 2015	4,140	1,273	5,413
Total	33,761	9,970	31,995	
Grand Total	330,837	83,710	402,811	

¹Source of Data: NJ SPIRIT

²A CPS Report or a CWS Referral may include multiple children in a family, with one or more allegation or request for services. In these cases, each CPS Report or CWS Referral is counted once - the CPS Report or the CWS Referral is the unit of analysis rather than the child.

³Prior to January 2014, the number of CPS Reports and CWS Referrals was based on the type of assignment of the CPS Report or CWS Referral. Beginning in January 2014, the number of CPS Reports and CWS Referrals is based on the number of CPS Reports and CWS Referrals received.

Table 3: Source of CPS Reports and CWS Referrals

	Source	Jul 2014	Aug 2014	Sep 2014	Oct 2014	Nov 2014	Dec 2014	Jan 2015	Feb 2015	Mar 2015	Apr 2015	May 2015	Jun 2015	July 2015	13 Month Total			
CPS Reports and CWS Referrals	School Staff	200	90	1,200	1,935	1,395	1,481	1,504	1,629	1,894	1,487	1,868	1,166	183	3%	16,032	20%	
	Healthcare Provider	860	704	774	824	735	774	701	720	825	861	812	808	816	15%	10,214	13%	
	Law Enforcement	961	934	922	898	835	820	870	783	933	925	1056	1093	1,082	20%	12,112	15%	
	Government Agency	480	429	470	474	350	402	362	377	465	445	370	422	495	9%	5,541	7%	
	Parent	593	549	591	603	517	520	510	506	539	493	493	578	581	594	11%	7,174	9%
	Relative/Friend/Neighbor	688	586	553	568	418	406	468	393	491	484	540	546	546	604	11%	6,745	9%
	Anonymous	609	640	661	772	614	659	612	607	687	641	802	725	725	611	11%	8,640	11%
	CP&P	139	111	119	113	94	113	109	120	110	117	103	125	125	119	2%	1,492	2%
	Court/Legal	138	122	111	129	78	114	118	95	108	116	128	148	148	155	3%	1,560	2%
	Community Group/Individual	274	241	271	270	209	211	233	263	260	295	266	232	232	280	5%	3,305	4%
	Facility Staff (incl Correctional Facility)	94	88	72	92	82	89	107	79	71	106	76	89	89	92	2%	1,137	1%
	Child (Self)	52	38	63	47	42	46	40	35	39	37	49	41	41	44	1%	573	1%
	Other	350	312	342	354	293	308	291	298	328	332	353	330	330	327	6%	4,218	5%
	Daycare/Babysitter	11	7	17	16	8	13	15	14	17	12	17	17	17	11	0%	175	0%
Total		5,449	4,851	6,166	7,095	5,670	5,956	5,940	5,919	6,767	6,351	7,018	6,323	5,413		78,918		

Table 4: Monthly Count of CPS Reports and CWS Referrals Assigned to Counties

County														Average # of Assignments the Last 12 Months	Jun 15 to Jul 15 Numerical Difference
	Jul 2014	Aug 2014	Sep 2014	Oct 2014	Nov 2014	Dec 2014	Jan 2015	Feb 2015	Mar 2015	Apr 2015	May 2015	Jun 2015	July 2015		
Atlantic	229	221	233	292	234	245	233	210	269	277	275	239	218	246	-21
Bergen	228	235	337	392	328	323	323	324	386	335	382	296	284	329	-12
Burlington	242	248	251	335	238	277	269	305	285	319	322	274	263	282	-11
Camden	490	400	537	594	502	464	487	505	534	506	551	552	449	507	-103
Cape May	96	92	95	87	59	71	82	68	93	85	80	69	78	80	9
Cumberland	218	147	214	224	189	207	213	201	253	217	249	217	173	209	-44
Essex	536	516	630	725	579	622	617	597	769	699	779	642	583	647	-59
Gloucester	254	206	261	300	228	232	238	223	276	288	244	259	258	251	-1
Hudson	338	275	446	532	349	398	414	396	442	382	546	471	352	417	-119
Hunterdon	57	39	50	47	33	65	30	52	45	50	51	47	48	46	1
Mercer	246	203	261	294	246	230	244	209	264	244	249	262	198	242	-64
Middlesex	336	284	413	458	341	418	424	464	479	418	471	423	335	411	-88
Monmouth	293	334	375	413	346	354	325	373	440	374	378	346	301	363	-45
Morris	198	195	223	237	227	183	237	190	224	208	246	233	186	216	-47
Ocean	372	316	384	456	387	381	374	364	398	402	418	388	376	387	-12
Passaic	340	299	384	427	382	417	361	387	443	389	534	412	317	396	-95
Salem	76	82	101	96	50	66	87	60	71	96	105	81	68	80	-13
Somerset	125	119	139	152	134	132	126	131	153	154	178	163	158	145	-5
Sussex	96	75	87	84	96	91	86	85	109	104	97	112	103	94	-9
Union	245	204	286	354	311	288	322	278	360	307	299	305	228	295	-77
Warren	77	73	93	113	87	102	97	119	92	101	117	102	89	99	-13
County Subtotals	5,092	4,563	5,800	6,612	5,346	5,566	5,589	5,541	6,385	5,955	6,571	5,893	5,065	5,741	-828
Central Region IAIU	54	40	55	70	54	61	48	50	50	51	54	54	24	51	-30
Metro Region IAIU	43	26	47	70	45	49	53	58	67	54	70	66	56	55	-10
Northern Region IAIU	50	41	58	80	47	67	62	61	73	70	80	65	61	64	-4
Southern Region IAIU	61	52	64	85	59	89	60	68	68	78	97	88	63	73	-25
IAIU Subtotals	208	159	224	305	205	266	223	237	258	253	301	273	204	242	-69
Unable to Determine¹	149	129	141	174	117	123	127	138	118	141	144	153	142	137	-11
Other Offices	0	0	1	4	2	1	1	3	6	2	2	4	2	2	-2
Grand Total	5,449	4,851	6,166	7,095	5,670	5,956	5,940	5,919	6,767	6,351	7,018	6,323	5,413	6,122	-910

¹CPS Reports or CWS Referrals not assigned to an office through the Assignment Designee, but were assigned to an office for an assessment or investigation.



Table 5: Monthly Count of CPS Reports and CWS Referrals Assigned to CP&P Local Offices

County	Local Office	Type of Referral														Total
			Jul 2014	Aug 2014	Sep 2014	Oct 2014	Nov 2014	Dec 2014	Jan 2015	Feb 2015	Mar 2015	Apr 2015	May 2015	Jun 2015	July 2015	
ATLANTIC	Atlantic East	CPS	104	98	108	125	100	120	106	77	116	134	121	115	100	1,424
		CWS	23	32	23	35	36	24	29	26	32	32	38	24	30	384
		Total	127	130	131	160	136	144	135	103	148	166	159	139	130	1,808
	Atlantic West	CPS	75	71	82	103	75	77	76	85	101	86	96	81	72	1,080
		CWS	27	20	20	29	23	24	22	22	20	25	20	19	16	287
		Total	102	91	102	132	98	101	98	107	121	111	116	100	88	1,367
	County Totals	CPS	179	169	190	228	175	197	182	162	217	220	217	196	172	2,504
		CWS	50	52	43	64	59	48	51	48	52	57	58	43	46	671
		Total	229	221	233	292	234	245	233	210	269	277	275	239	218	3,175
BERGEN	Bergen Central	CPS	68	67	107	111	109	94	97	94	103	110	123	102	83	1,268
		CWS	23	24	38	51	49	39	39	32	37	36	34	32	29	463
		Total	91	91	145	162	158	133	136	126	140	146	157	134	112	1,731
	Bergen South	CPS	99	102	142	181	124	136	144	144	183	133	175	120	127	1,810
		CWS	38	42	50	49	46	54	43	54	63	56	50	42	45	632
		Total	137	144	192	230	170	190	187	198	246	189	225	162	172	2,442
	County Totals	CPS	167	169	249	292	233	230	241	238	286	243	298	222	210	3,078
		CWS	61	66	88	100	95	93	82	86	100	92	84	74	74	1,095
		Total	228	235	337	392	328	323	323	324	386	335	382	296	284	4,173
BURLINGTON	Burlington East	CPS	98	89	88	115	107	110	110	116	105	138	125	99	97	1,397
		CWS	27	35	32	38	25	30	25	33	29	28	37	26	38	403
		Total	125	124	120	153	132	140	135	149	134	166	162	125	135	1,800
	Burlington West	CPS	94	90	89	145	80	100	104	121	119	117	122	115	96	1,392
		CWS	23	34	42	37	26	37	30	35	32	36	38	34	32	436
		Total	117	124	131	182	106	137	134	156	151	153	160	149	128	1,828
	County Totals	CPS	192	179	177	260	187	210	214	237	224	255	247	214	193	2,789
		CWS	50	69	74	75	51	67	55	68	61	64	75	60	70	839
		Total	242	248	251	335	238	277	269	305	285	319	322	274	263	3,628
CAMDEN	Camden Central	CPS	111	97	109	151	100	103	123	123	127	115	122	121	105	1,507
		CWS	34	30	35	26	28	23	35	28	23	38	29	27	29	385
		Total	145	127	144	177	128	126	158	151	150	153	151	148	134	1,892
	Camden East	CPS	94	82	92	116	91	93	74	93	89	102	119	125	81	1,251
		CWS	27	18	46	37	39	24	31	19	30	31	30	30	30	392
		Total	121	100	138	153	130	117	105	112	119	133	149	155	111	1,643
	Camden North	CPS	91	71	95	122	105	73	89	85	106	89	101	116	82	1,225
		CWS	27	15	25	23	28	33	31	29	33	31	33	36	26	370
		Total	118	86	120	145	133	106	120	114	139	120	134	152	108	1,595
	Camden South	CPS	82	64	94	92	88	84	78	96	97	88	92	73	76	1,104
		CWS	24	23	41	27	23	31	26	32	29	12	25	24	20	337
		Total	106	87	135	119	111	115	104	128	126	100	117	97	96	1,441
	County Totals	CPS	378	314	390	481	384	353	364	397	419	394	434	435	344	5,087
		CWS	112	86	147	113	118	111	123	108	115	112	117	117	105	1,484
		Total	490	400	537	594	502	464	487	505	534	506	551	552	449	6,571
CAPE MAY	Cape May	CPS	70	76	74	73	47	54	63	54	78	63	66	57	63	838
		CWS	26	16	21	14	12	17	19	14	15	22	14	12	15	217
		Total	96	92	95	87	59	71	82	68	93	85	80	69	78	1,055
	County Totals	CPS	70	76	74	73	47	54	63	54	78	63	66	57	63	838
		CWS	26	16	21	14	12	17	19	14	15	22	14	12	15	217
		Total	96	92	95	87	59	71	82	68	93	85	80	69	78	1,055
CUMBERLAND	Cumberland East	CPS	67	30	55	69	56	43	51	52	63	50	70	66	33	705
		CWS	5	18	18	17	14	22	16	16	15	12	25	19	6	203
		Total	72	48	73	86	70	65	67	68	78	62	95	85	39	908
	Cumberland West	CPS	121	70	116	102	91	107	121	105	143	117	123	99	108	1,423
		CWS	25	29	25	36	28	35	25	28	32	38	31	33	26	391
		Total	146	99	141	138	119	142	146	133	175	155	154	132	134	1,814
	County Totals	CPS	188	100	171	171	147	150	172	157	206	167	193	165	141	2,128
		CWS	30	47	43	53	42	57	41	44	47	50	56	52	32	594
		Total	218	147	214	224	189	207	213	201	253	217	249	217	173	2,722

Data in this report is preliminary and may differ from any final report. This report is produced to ensure continuous quality improvement throughout DCF.



Table 5: Monthly Count of CPS Reports and CWS Referrals Assigned to CP&P Local Offices

County	Local Office	Type of Referral													Total	
			Jul 2014	Aug 2014	Sep 2014	Oct 2014	Nov 2014	Dec 2014	Jan 2015	Feb 2015	Mar 2015	Apr 2015	May 2015	Jun 2015		July 2015
ESSEX	Essex Central	CPS	76	67	84	104	73	77	97	68	92	105	118	81	76	1,118
		CWS	28	20	30	42	36	36	34	31	25	32	36	27	39	416
		Total	104	87	114	146	109	113	131	99	117	137	154	108	115	1,534
	Essex North	CPS	37	43	68	65	61	59	50	48	63	78	75	67	42	756
		CWS	13	14	21	25	20	16	14	23	26	20	20	23	18	253
		Total	50	57	89	90	81	75	64	71	89	98	95	90	60	1,009
	Essex South	CPS	42	55	50	61	48	61	70	70	95	75	71	51	49	798
		CWS	23	25	31	22	30	29	24	26	22	17	16	20	19	304
		Total	65	80	81	83	78	90	94	96	117	92	87	71	68	1,102
	Newark Center City	CPS	73	62	83	90	68	91	75	74	110	90	106	72	61	1,055
		CWS	19	30	33	40	28	24	19	21	33	15	40	27	23	352
		Total	92	92	116	130	96	115	94	95	143	105	146	99	84	1,407
	Newark Northeast	CPS	83	70	78	97	80	68	74	101	107	106	94	108	81	1,147
		CWS	22	25	27	28	25	40	36	27	45	27	34	28	31	395
		Total	105	95	105	125	105	108	110	128	152	133	128	136	112	1,542
	Newark South	CPS	91	69	93	124	80	88	94	81	120	97	127	102	113	1,279
		CWS	29	36	32	27	30	33	30	26	31	37	42	36	31	420
		Total	120	105	125	151	110	121	124	107	151	134	169	138	144	1,699
County Totals	CPS	402	366	456	541	410	444	460	442	587	551	591	481	422	6,153	
	CWS	134	150	174	184	169	178	157	154	182	148	188	161	161	2,140	
	Total	536	516	630	725	579	622	617	596	769	699	779	642	583	8,293	
GLOUCESTER	Gloucester East	CPS	94	73	90	101	85	85	95	96	110	114	88	85	85	1,201
		CWS	21	25	28	37	39	28	18	20	29	34	18	25	36	358
		Total	115	98	118	138	124	113	113	116	139	148	106	110	121	1,559
	Gloucester West	CPS	103	82	119	126	74	96	96	80	113	115	114	121	118	1,357
		CWS	36	26	24	36	30	23	29	27	24	25	24	28	19	351
		Total	139	108	143	162	104	119	125	107	137	140	138	149	137	1,708
	County Totals	CPS	197	155	209	227	159	181	191	176	223	229	202	206	203	2,558
		CWS	57	51	52	73	69	51	47	47	53	59	42	53	55	709
Total		254	206	261	300	228	232	238	223	276	288	244	259	258	3,267	
HUDSON	Hudson Central	CPS	74	58	76	94	49	56	73	84	90	89	112	88	71	1,014
		CWS	28	28	34	33	31	29	27	25	30	30	22	30	24	371
		Total	102	86	110	127	80	85	100	109	120	119	134	118	95	1,385
	Hudson North	CPS	48	34	90	99	53	74	69	70	73	65	107	96	60	938
		CWS	19	17	25	33	23	26	30	22	29	19	28	27	18	316
		Total	67	51	115	132	76	100	99	92	102	84	135	123	78	1,254
	Hudson South	CPS	66	43	88	95	59	88	77	80	87	70	103	93	79	1,028
		CWS	19	31	21	36	30	17	23	32	31	23	46	29	23	361
		Total	85	74	109	131	89	105	100	112	118	93	149	122	102	1,389
	Hudson West	CPS	63	43	87	113	85	81	86	65	77	71	103	77	57	1,008
		CWS	21	21	25	29	19	27	29	18	25	15	25	31	20	305
		Total	84	64	112	142	104	108	115	83	102	86	128	108	77	1,313
County Totals	CPS	251	178	341	401	246	299	305	299	327	295	425	354	267	3,988	
	CWS	87	97	105	131	103	99	109	97	115	87	121	117	85	1,353	
	Total	338	275	446	532	349	398	414	396	442	382	546	471	352	5,341	
HUNTERDON	Hunterdon	CPS	44	32	34	38	23	46	19	39	28	33	32	32	35	435
		CWS	13	7	16	9	10	19	11	13	17	17	19	15	13	179
		Total	57	39	50	47	33	65	30	52	45	50	51	47	48	614
	County Totals	CPS	44	32	34	38	23	46	19	39	28	33	32	32	35	435
CWS		13	7	16	9	10	19	11	13	17	17	19	15	13	179	
Total		57	39	50	47	33	65	30	52	45	50	51	47	48	614	
MERCER	Mercer North	CPS	87	79	89	123	96	81	97	78	82	98	94	92	70	1,166
		CWS	25	27	35	28	42	30	30	29	43	23	27	25	29	393
		Total	112	106	124	151	138	111	127	107	125	121	121	117	99	1,559
	Mercer South	CPS	106	74	112	117	88	96	87	75	110	94	96	103	76	1,234
		CWS	28	23	25	26	20	23	30	27	29	29	32	42	23	357
		Total	134	97	137	143	108	119	117	102	139	123	128	145	99	1,591
	County Totals	CPS	193	153	201	240	184	177	184	153	192	192	190	195	146	2,400
CWS		53	50	60	54	62	53	60	56	72	52	59	67	52	750	
Total		246	203	261	294	246	230	244	209	264	244	249	262	198	3,150	

Data in this report is preliminary and may differ from any final report. This report is produced to ensure continuous quality improvement throughout DCF.



Table 5: Monthly Count of CPS Reports and CWS Referrals Assigned to CP&P Local Offices

County	Local Office	Type of Referral													Total	
			Jul 2014	Aug 2014	Sep 2014	Oct 2014	Nov 2014	Dec 2014	Jan 2015	Feb 2015	Mar 2015	Apr 2015	May 2015	Jun 2015		July 2015
MIDDLESEX	Middlesex Central	CPS	65	51	81	90	54	64	77	75	83	85	89	65	52	931
		CWS	19	22	22	24	14	24	27	16	20	21	27	17	25	278
		Total	84	73	103	114	68	88	104	91	103	106	116	82	77	1,209
	Middlesex Coastal	CPS	118	92	103	137	105	121	131	135	154	122	151	128	101	1,598
		CWS	20	17	47	38	36	37	32	46	49	34	37	44	43	480
		Total	138	109	150	175	141	158	163	181	203	156	188	172	144	2,078
	Middlesex West	CPS	87	81	119	134	86	124	129	155	139	122	138	132	94	1,540
		CWS	27	21	41	35	46	48	28	37	34	34	29	37	20	437
		Total	114	102	160	169	132	172	157	192	173	156	167	169	114	1,977
	County Totals	CPS	270	224	303	361	245	309	337	365	376	329	378	325	247	4,069
		CWS	66	60	110	97	96	109	87	99	103	89	93	98	88	1,195
		Total	336	284	413	458	341	418	424	464	479	418	471	423	335	5,264
	MONMOUTH	Monmouth North	CPS	125	142	156	169	141	142	153	158	181	156	164	152	129
CWS			39	41	45	49	32	50	30	50	47	40	43	39	37	542
Total			164	183	201	218	173	192	183	208	228	196	207	191	166	2,510
Monmouth South		CPS	111	119	134	153	129	118	109	122	171	146	128	125	108	1,673
		CWS	18	32	40	42	44	44	33	43	41	32	43	30	27	469
		Total	129	151	174	195	173	162	142	165	212	178	171	155	135	2,142
County Totals		CPS	236	261	290	322	270	260	262	280	352	302	292	277	237	3,641
		CWS	57	73	85	91	76	94	63	93	88	72	86	69	64	1,011
		Total	293	334	375	413	346	354	325	373	440	374	378	346	301	4,652
MORRIS		Morris East	CPS	70	53	87	80	69	62	70	70	80	84	74	74	61
	CWS		22	25	19	24	28	25	30	21	28	21	23	22	27	315
	Total		92	78	106	104	97	87	100	91	108	105	97	96	88	1,249
	Morris West	CPS	80	87	85	108	91	67	101	83	84	70	102	92	69	1,119
		CWS	26	30	32	25	39	29	36	16	32	33	47	45	29	419
		Total	106	117	117	133	130	96	137	99	116	103	149	137	98	1,538
	County Totals	CPS	150	140	172	188	160	129	171	153	164	154	176	166	130	2,053
		CWS	48	55	51	49	67	54	66	37	60	54	70	67	56	734
		Total	198	195	223	237	227	183	237	190	224	208	246	233	186	2,787
	OCEAN	Ocean North	CPS	132	110	139	132	147	126	113	144	132	149	144	145	120
CWS			33	35	36	46	42	39	32	36	54	45	52	38	34	522
Total			165	145	175	178	189	165	145	180	186	194	196	183	154	2,255
Ocean South		CPS	156	141	160	226	161	168	178	144	171	161	172	167	178	2,183
		CWS	51	30	49	52	37	48	51	40	41	47	50	38	44	578
		Total	207	171	209	278	198	216	229	184	212	208	222	205	222	2,761
County Totals		CPS	288	251	299	358	308	294	291	288	303	310	316	312	298	3,916
		CWS	84	65	85	98	79	87	83	76	95	92	102	76	78	1,100
		Total	372	316	384	456	387	381	374	364	398	402	418	388	376	5,016
PASSAIC		Passaic Central	CPS	128	112	140	182	161	179	132	149	161	143	221	152	118
	CWS		49	34	53	53	53	59	44	45	77	63	67	58	52	707
	Total		177	146	193	235	214	238	176	194	238	206	288	210	170	2,685
	Passaic North	CPS	122	113	153	141	119	140	128	148	138	137	190	151	116	1,796
		CWS	41	40	38	51	49	39	57	45	67	46	56	51	31	611
		Total	163	153	191	192	168	179	185	193	205	183	246	202	147	2,407
	County Totals	CPS	250	225	293	323	280	319	260	297	299	280	411	303	234	3,774
		CWS	90	74	91	104	102	98	101	90	144	109	123	109	83	1,318
		Total	340	299	384	427	382	417	361	387	443	389	534	412	317	5,092
	SALEM	Salem	CPS	57	69	82	80	41	52	64	47	52	84	78	66	51
CWS			19	13	19	16	9	14	23	13	19	12	27	15	17	216
Total			76	82	101	96	50	66	87	60	71	96	105	81	68	1,039
County Totals		CPS	57	69	82	80	41	52	64	47	52	84	78	66	51	823
		CWS	19	13	19	16	9	14	23	13	19	12	27	15	17	216
		Total	76	82	101	96	50	66	87	60	71	96	105	81	68	1,039
SOMERSET	Somerset	CPS	102	93	110	116	95	98	100	101	111	117	131	122	126	1,422
		CWS	23	26	29	36	39	34	26	30	42	37	47	41	32	442
		Total	125	119	139	152	134	132	126	131	153	154	178	163	158	1,864
	County Totals	CPS	102	93	110	116	95	98	100	101	111	117	131	122	126	1,422
		CWS	23	26	29	36	39	34	26	30	42	37	47	41	32	442
		Total	125	119	139	152	134	132	126	131	153	154	178	163	158	1,864

Data in this report is preliminary and may differ from any final report. This report is produced to ensure continuous quality improvement throughout DCF.



Table 5: Monthly Count of CPS Reports and CWS Referrals Assigned to CP&P Local Offices

County	Local Office	Type of Referral														Total
			Jul 2014	Aug 2014	Sep 2014	Oct 2014	Nov 2014	Dec 2014	Jan 2015	Feb 2015	Mar 2015	Apr 2015	May 2015	Jun 2015	July 2015	
SUSSEX	Sussex	CPS	73	55	59	60	71	70	66	64	80	84	74	77	86	919
		CWS	23	20	28	24	25	21	20	21	29	20	23	35	17	306
		Total	96	75	87	84	96	91	86	85	109	104	97	112	103	1,225
	County Totals	CPS	73	55	59	60	71	70	66	64	80	84	74	77	86	919
		CWS	23	20	28	24	25	21	20	21	29	20	23	35	17	306
		Total	96	75	87	84	96	91	86	85	109	104	97	112	103	1,225
UNION	Union Central	CPS	59	36	63	94	81	67	91	75	86	81	85	83	56	957
		CWS	24	20	21	37	17	15	21	19	30	21	19	20	25	289
		Total	83	56	84	131	98	82	112	94	116	102	104	103	81	1,246
	Union East	CPS	63	49	69	94	83	82	72	73	92	85	69	80	51	962
		CWS	26	26	28	26	28	27	34	24	43	27	33	32	8	362
		Total	89	75	97	120	111	109	106	97	135	112	102	112	59	1,324
	Union West	CPS	47	58	83	78	80	69	75	66	81	64	71	62	59	893
		CWS	26	15	22	25	22	28	29	21	28	29	22	28	29	324
		Total	73	73	105	103	102	97	104	87	109	93	93	90	88	1,217
	County Totals	CPS	169	143	215	266	244	218	238	214	259	230	225	225	166	2,812
		CWS	76	61	71	88	67	70	84	64	101	77	74	80	62	975
		Total	245	204	286	354	311	288	322	278	360	307	299	305	228	3,787
WARREN	Warren	CPS	66	54	72	96	64	74	68	87	66	82	84	78	71	962
		CWS	11	19	21	17	23	28	29	32	26	19	33	24	18	300
		Total	77	73	93	113	87	102	97	119	92	101	117	102	89	1,262
	County Totals	CPS	66	54	72	96	64	74	68	87	66	82	84	78	71	962
		CWS	11	19	21	17	23	28	29	32	26	19	33	24	18	300
		Total	77	73	93	113	87	102	97	119	92	101	117	102	89	1,262
County CPS Referral Total	CPS	3,922	3,406	4,387	5,122	3,973	4,164	4,252	4,250	4,849	4,614	5,060	4,508	3,842	56,349	
County CWS Referral Total	CWS	1,170	1,157	1,413	1,490	1,373	1,402	1,337	1,290	1,536	1,341	1,511	1,385	1,223	17,628	
County Referral Total	Total	5,092	4,563	5,800	6,612	5,346	5,566	5,589	5,540	6,385	5,955	6,571	5,893	5,065	73,977	
Central Region IAIU	CPS	54	40	55	70	54	61	48	50	50	51	54	54	63	704	
	CWS	0	0	0	0	0	0	0	0	0	0	0	0	0	0	
	Total	54	40	55	70	54	61	48	50	50	51	54	54	63	704	
Metro Region IAIU	CPS	43	25	47	70	45	49	53	59	67	54	70	66	24	672	
	CWS	0	1	0	1	0	0	0	0	0	0	0	0	0	2	
	Total	43	26	47	71	45	49	53	59	67	54	70	66	24	674	
Northern Region IAIU	CPS	50	41	58	80	47	67	62	61	73	70	80	65	56	810	
	CWS	0	0	0	0	0	0	0	0	0	0	0	0	0	0	
	Total	50	41	58	80	47	67	62	61	73	70	80	65	56	810	
Southern Region IAIU	CPS	61	52	64	85	59	89	60	68	68	78	97	88	61	930	
	CWS	0	0	0	0	0	0	0	0	0	0	0	0	0	0	
	Total	61	52	64	85	59	89	60	68	68	78	97	88	61	930	
IAIU CPS Subtotal	CPS	208	158	224	305	205	266	223	238	258	253	301	273	204	3,116	
IAIU CWS Subtotal	CWS	0	1	1	0	0	0	0	0	0	0	0	0	0	2	
IAIU Subtotal	Total	208	159	225	305	205	266	223	238	258	253	301	273	204	3,118	
County and IAIU CPS Subtotal	CPS	4,130	3,564	4,611	5,427	4,178	4,430	4,475	4,488	5,107	4,867	5,361	4,781	4,046	59,465	
County and IAIU CWS Subtotal	CWS	1,170	1,158	1,414	1,490	1,373	1,402	1,337	1,290	1,536	1,341	1,511	1,385	1,223	17,630	
Unable to Determine⁽¹⁾	Total	149	129	141	174	117	123	127	138	118	141	144	153	142	1,796	
Other Offices	Total	0	0	0	4	2	1	1	3	6	2	2	4	2	27	
Grand Total	Total	5,449	4,851	6,166	7,095	5,670	5,956	5,940	5,919	6,767	6,351	7,018	6,323	5,413	78,918	

⁽¹⁾CPS Reports or CWS Referrals not assigned to an office through the Assignment Designee, but were assigned to an office for an assessment or investigation.