



## **Child Protection and Permanency**

# **Monthly Screening and Investigation Report February 2016**

Allison Blake, Ph.D., L.S.W.  
Commissioner

March 15, 2016



## Table of Contents

Table 1: NJ State Central Registry Activity: Monthly Child Abuse and Neglect Hotline Calls, Intakes and Assignments to Child Protection & Permanency (CP&P) Offices

---

Chart 1: CP&P Annual Trends in Child Protection Services (CPS) Reports and Child Welfare Services (CWS) Referrals

---

Table 2: Assignments to CP&P Offices: CPS Reports and CWS Referrals

---

Table 3: Source of CPS Reports and CWS Referrals

---

Table 4: Monthly Count of CPS Reports and CWS Referrals Assigned to Counties

---

Table 5: Monthly Count of CPS Reports and CWS Referrals Assigned to CP&P Local Offices

---

**Table 1: NJ State Central Registry Activity: Monthly Child Abuse and Neglect Hotline Calls, Intakes and Assignments to CP&P Offices<sup>1,2,7</sup>**

2015 - 2016	Hotline Call Activity				Intakes Recorded in NJ SPIRIT <sup>6,8</sup>												Assignments to CP&P Offices				
	Total Calls to SCR <sup>3</sup>	Abandon Calls <sup>4</sup>	Average Time to Answer (seconds)	Resulting NJS Intakes <sup>5</sup>	CPS Reports		CWS Referrals		No Action Required (NAR)		Related Information (RI)		Information & Referral (I&R)		Information Only (IO)		CPS Reports		CWS Referrals		Total
					n	%	n	%	n	%	n	%	n	%	n	%	n	%	n	%	
February 2015	12,881	537	35	14,010	4,573	32.6%	1,342	9.6%	418	3.0%	3,494	24.9%	1,516	10.8%	2,667	19.0%	4,574	77.3%	1,345	22.7%	5,919
March 2015	14,805	486	30	16,174	5,187	32.1%	1,580	9.8%	363	2.2%	4,021	24.9%	1,811	11.2%	3,212	19.9%	5,187	76.7%	1,580	23.3%	6,767
April 2015	13,698	409	26	15,107	4,967	32.9%	1,381	9.1%	366	2.4%	3,900	25.8%	1,615	10.7%	2,878	19.1%	4,967	78.2%	1,384	21.8%	6,351
May 2015	15,466	583	39	16,769	5,457	32.5%	1,560	9.3%	340	2.0%	4,437	26.5%	1,874	11.2%	3,101	18.5%	5,457	77.8%	1,561	22.2%	7,018
June 2015	13,760	405	29	15,189	4,887	32.2%	1,436	9.5%	373	2.5%	3,981	26.2%	1,659	10.9%	2,853	18.8%	4,887	77.3%	1,436	22.7%	6,323
July 2015	12,132	380	20	13,624	4,140	30.4%	1,273	9.3%	442	3.2%	3,569	26.2%	1,416	10.4%	2,784	20.4%	4,140	76.5%	1,273	23.5%	5,413
August 2015	12,553	652	24	13,691	3,978	29.1%	1,257	9.2%	401	2.9%	3,713	27.1%	1,384	10.1%	2,958	21.6%	3,978	76.0%	1,256	24.0%	5,234
September 2015	13,335	351	24	14,955	4,776	31.9%	1,494	10.0%	467	3.1%	3,908	26.1%	1,601	10.7%	2,709	18.1%	4,776	76.2%	1,495	23.8%	6,271
October 2015	14,304	315	18	15,821	5,139	32.5%	1,620	10.2%	332	2.1%	4,073	25.7%	1,834	11.6%	2,823	17.8%	5,139	76.0%	1,619	24.0%	6,758
November 2015	13,321	445	20	14,527	4,417	30.4%	1,475	10.2%	347	2.4%	3,942	27.1%	1,513	10.4%	2,833	19.5%	4,417	74.9%	1,477	25.1%	5,894
December 2015	13,186	603	28	14,236	4,530	31.8%	1,544	10.8%	370	2.6%	3,709	26.1%	1,567	11.0%	2,516	17.7%	4,530	74.6%	1,544	25.4%	6,074
January 2016	13,499	551	40	14,655	4,686	32.0%	1,573	10.7%	282	1.9%	4,020	27.4%	1,482	10.1%	2,612	17.8%	4,686	74.9%	1,571	25.1%	6,257
<b>February 2016</b>	<b>13,927</b>	<b>590</b>	<b>40</b>	<b>15,143</b>	<b>4,974</b>	<b>32.8%</b>	<b>1,620</b>	<b>10.7%</b>	<b>419</b>	<b>2.8%</b>	<b>3,836</b>	<b>25.3%</b>	<b>1,627</b>	<b>10.7%</b>	<b>2,667</b>	<b>17.6%</b>	<b>4,974</b>	<b>75.4%</b>	<b>1,622</b>	<b>24.6%</b>	<b>6,596</b>
<b>Monthly Average</b>	<b>13,605</b>	<b>485</b>	<b>29</b>	<b>14,915</b>	<b>4,747</b>	<b>31.8%</b>	<b>1,473</b>	<b>9.9%</b>	<b>378</b>	<b>2.5%</b>	<b>3,893</b>	<b>26.1%</b>	<b>1,608</b>	<b>10.8%</b>	<b>2,816</b>	<b>18.9%</b>	<b>4,747</b>	<b>76.3%</b>	<b>1,474</b>	<b>23.7%</b>	<b>6,221</b>
<b>Overall Total</b>	<b>176,867</b>	<b>6,307</b>		<b>193,901</b>	<b>61,711</b>		<b>19,155</b>		<b>4,920</b>		<b>50,603</b>		<b>20,899</b>		<b>36,613</b>		<b>61,712</b>	<b>76.3%</b>	<b>19,163</b>	<b>23.7%</b>	<b>80,875</b>

<sup>1</sup> Comes from three distinct sources: (1) the Automatic Call Distribution (ACD) phone system; which keeps a count of the number of calls and call routing; (2) Monthly NJSpirit Intakes; which record decision making on calls received by hotline screeners, and (3) NJSpirit extracts of assigned CWS Referrals and CPS Reports.

<sup>2</sup> The number of Intakes, CPS Reports, and CWS Referrals are based on an extract from NJSpirit. Data extracted by the Office of Research, Evaluation, and Reporting on **March 15, 2016** includes all Intakes, CPS Reports, and CWS Referrals received from **February 1, 2016 through February 29, 2016**.

<sup>3</sup> The number calls received through the ACD System that were directed to a screener from any call-in phone number.

<sup>4</sup> The number of calls received through the ACD System that are abandoned either while waiting in queue or while ringing.

<sup>5</sup> The number of Intakes entered in NJSpirit from the number of calls received.

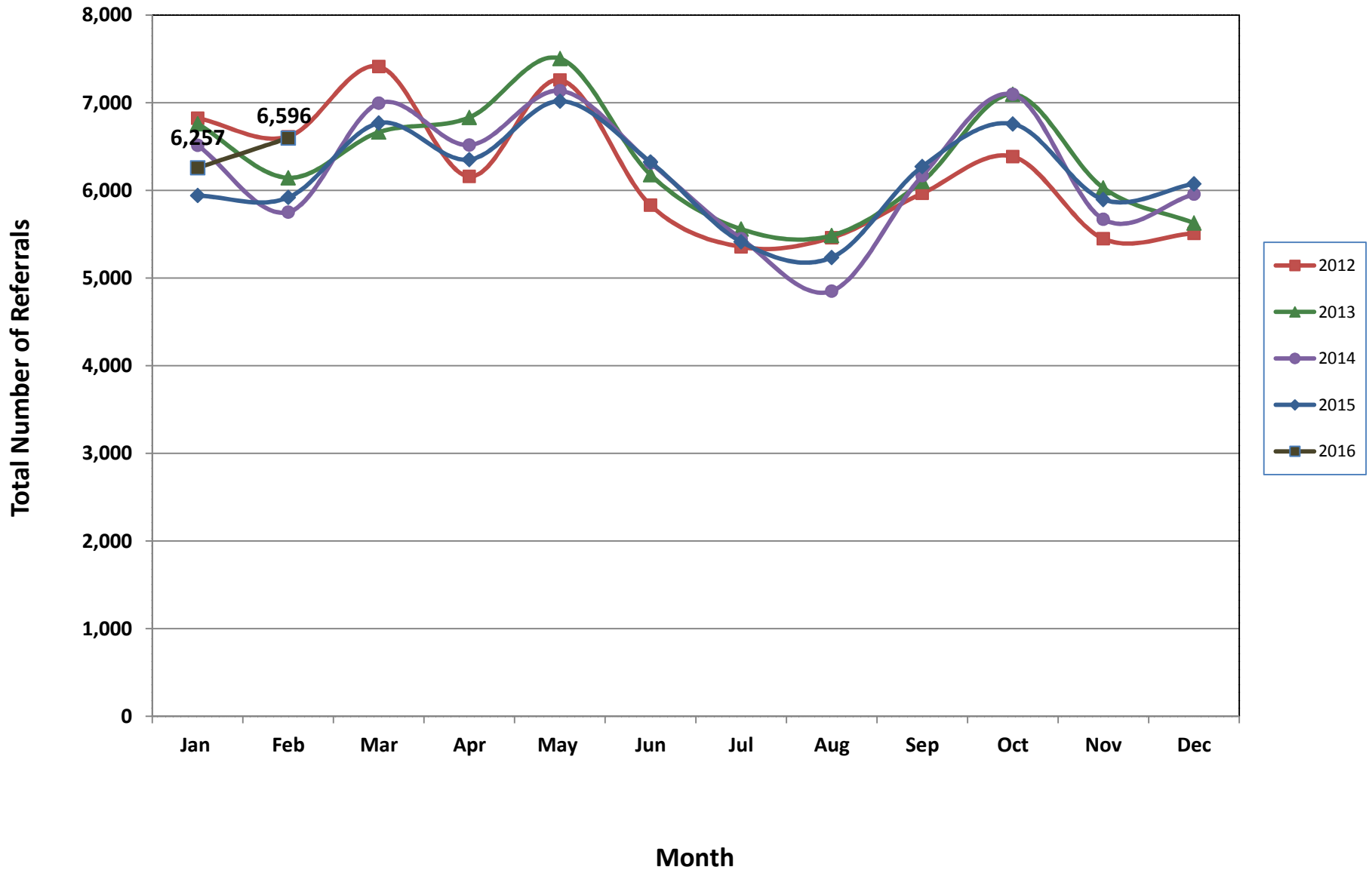
<sup>6</sup> The number of Intakes recorded in NJSpirit, by type of Intake. There is not a one-to-one relationship between an ACD call and an Intake; multiple calls to State Central Registry (SCR) may result in a single Intake, or one call may result in multiple Intakes.

<sup>7</sup> Intake: The process of documenting: a report of alleged abuse or neglect of a child (CPS); a request for services on behalf of a child, or a referral of a child for services (CWS); a call in which the caller provides additional or clarifying information about a current service case or active investigation (RI); informing a caller of, or referring a caller to, services available from other private or public sources (I&R); a call that requires no action by CP&P (NAR); or a response to a simple inquiry (IO).

<sup>8</sup> NJ SPIRIT: NJ Statewide Protection Investigation and Reporting Information Tool case management system



### CP&P Annual Trends in CPS Reports and CWS Referrals



The data contained in this report is considered preliminary and as a result, these figures might be different than the final reported figures. The data is produced for continuous quality improvement.

**Table 2: Assignments to CP&P Offices: CPS Reports and CWS Referrals<sup>1</sup>**

Intake Date <sup>3</sup>		CPS Reports <sup>2</sup>	CWS Referrals <sup>2</sup>	Total Assignments <sup>2</sup>
2012	Jan 2012	5,530	1,294	6,824
	Feb 2012	5,358	1,255	6,613
	Mar 2012	5,985	1,428	7,413
	Apr 2012	4,899	1,259	6,158
	May 2012	5,874	1,385	7,259
	Jun 2012	4,640	1,190	5,830
	Jul 2012	4,254	1,101	5,355
	Aug 2012	4,325	1,135	5,460
	Sep 2012	4,769	1,196	5,965
	Oct 2012	5,178	1,207	6,385
	Nov 2012	4,310	1,138	5,448
	Dec 2012	4,394	1,116	5,510
	<b>Total</b>	<b>59,516</b>	<b>14,704</b>	<b>74,220</b>
2013	Jan 2013	5,464	1,296	6,760
	Feb 2013	4,966	1,177	6,143
	Mar 2013	5,355	1,309	6,664
	Apr 2013	5,430	1,402	6,832
	May 2013	5,993	1,510	7,503
	Jun 2013	4,947	1,230	6,177
	Jul 2013	4,330	1,228	5,558
	Aug 2013	4,330	1,155	5,485
	Sep 2013	4,851	1,251	6,102
	Oct 2013	5,614	1,481	7,095
	Nov 2013	4,694	1,334	6,028
	Dec 2013	4,397	1,229	5,626
	<b>Total</b>	<b>60,371</b>	<b>15,602</b>	<b>75,973</b>
2014	Jan 2014	5,097	1,416	6,513
	Feb 2014	4,457	1,295	5,752
	Mar 2014	5,408	1,586	6,994
	Apr 2014	5,049	1,467	6,516
	May 2014	5,501	1,635	7,136
	Jun 2014	4,796	1,517	6,313
	Jul 2014	4,202	1,247	5,449
	Aug 2014	3,629	1,222	4,851
	Sep 2014	4,668	1,498	6,166
	Oct 2014	5,509	1,586	7,095
	Nov 2014	4,254	1,416	5,670
	Dec 2014	4,509	1,447	5,956
	<b>Total</b>	<b>57,079</b>	<b>17,332</b>	<b>74,411</b>

**Table 2: Assignments to CP&P Offices: CPS Reports and CWS Referrals<sup>1</sup>**

Intake Date <sup>3</sup>		CPS Reports <sup>2</sup>	CWS Referrals <sup>2</sup>	Total Assignments <sup>2</sup>
<b>2015</b>	Jan 2015	4,549	1,391	5,940
	Feb 2015	4,574	1,345	5,919
	Mar 2015	5,187	1,580	6,767
	Apr 2015	4,967	1,384	6,351
	May 2015	5,457	1,561	7,018
	Jun 2015	4,887	1,436	6,323
	Jul 2015	4,140	1,273	5,413
	Aug 2015	3,978	1,256	5,234
	Sep 2015	4,776	1,495	6,271
	Oct 2015	5,139	1,619	6,758
	Nov 2015	4,417	1,477	5,894
	Dec 2015	4,530	1,544	6,074
	<b>Total</b>	<b>56,601</b>	<b>17,361</b>	<b>73,962</b>
<b>2016</b>	Jan 2016	4,686	1,571	6,257
	<b>February 2016</b>	<b>4,974</b>	<b>1,622</b>	<b>6,596</b>
	<b>Total</b>	<b>9,660</b>	<b>3,193</b>	<b>12,853</b>
<b>Grand Total</b>		<b>243,227</b>	<b>68,192</b>	<b>311,419</b>

<sup>1</sup>Source of Data: NJ SPIRIT

<sup>2</sup>A CPS Report or a CWS Referral may include multiple children in a family, with one or more allegation or request for services. In these cases, each CPS Report or CWS Referral is counted once - the CPS Report or the CWS Referral is the unit of analysis rather than the child.

<sup>3</sup>Prior to January 2014, the number of CPS Reports and CWS Referrals was based on the type of assignment of the CPS Report or CWS Referral. Beginning in January 2014, the number of CPS Reports and CWS Referrals is based on the number of CPS Reports and CWS Referrals received.

**Table 3: Source of CPS Reports and CWS Referrals**

CPS Reports and CWS Referrals	Source	Feb 2015	Mar 2015	Apr 2015	May 2015	Jun 2015	Jul 2015	Aug 2015	Sep 2015	Oct 2015	Nov 2015	Dec 2015	Jan 2016	Feb 2016		13 Month Total	
	School Staff	1,629	1,894	1,487	1,868	1,166	183	75	1,123	1,763	1,454	1,596	1,569	1,900	29%	17,707	22%
	Healthcare Provider	720	825	861	812	808	816	832	780	825	766	780	830	852	13%	10,507	13%
	Law Enforcement	783	933	925	1056	1093	1082	1,010	1,040	1,003	909	910	910	953	14%	12,607	16%
	Government Agency	377	465	445	370	422	495	449	437	426	376	389	412	394	6%	5,457	7%
	Parent	506	539	493	578	581	594	592	589	518	451	495	529	504	8%	6,969	9%
	Relative/Friend/Neighbor	393	491	484	540	546	604	595	592	526	466	455	446	454	7%	6,592	8%
	Anonymous	607	687	641	802	725	611	622	739	710	609	587	628	612	9%	8,580	11%
	CP&P	120	110	117	103	125	119	110	123	137	121	112	113	133	2%	1,543	2%
	Court/Legal	95	108	116	128	148	155	113	115	119	108	108	119	132	2%	1,564	2%
	Community Group/Individual	263	260	295	266	232	280	297	243	306	240	255	294	274	4%	3,505	4%
	Facility Staff (incl Correctional Facility)	79	71	106	76	89	92	105	78	83	83	81	91	80	1%	1,114	1%
	Child (Self)	35	39	37	49	41	44	67	47	34	31	21	41	37	1%	523	1%
	Other	298	328	332	353	330	327	344	348	288	265	274	259	253	4%	3,999	5%
Daycare/Babysitter	14	17	12	17	17	11	23	17	20	15	11	16	18	0%	208	0%	
<b>Total</b>	<b>5,919</b>	<b>6,767</b>	<b>6,351</b>	<b>7,018</b>	<b>6,323</b>	<b>5,413</b>	<b>5,234</b>	<b>6,271</b>	<b>6,758</b>	<b>5,894</b>	<b>6,074</b>	<b>6,257</b>	<b>6,596</b>		<b>80,875</b>		

**Table 4: Monthly Count of CPS Reports and CWS Referrals Assigned to Counties**

County														Average # of Assignments the Last 13 Months	Jan 16 to Feb 16 Numerical Difference
	Feb 2015	Mar 2015	Apr 2015	May 2015	Jun 2015	Jul 2015	Aug 2015	Sep 2015	Oct 2015	Nov 2015	Dec 2015	Jan 2016	February 2016		
Atlantic	210	269	277	275	239	218	227	295	267	227	255	251	284	253	33
Bergen	324	386	335	382	296	284	257	345	411	336	394	333	392	344	59
Burlington	305	285	319	322	274	263	284	307	303	258	268	275	315	291	40
Camden	505	534	506	551	552	449	438	516	609	461	498	558	551	518	-7
Cape May	68	93	85	80	69	78	86	92	112	75	89	83	65	83	-18
Cumberland	201	253	217	249	217	173	152	231	215	177	174	195	179	203	-16
Essex	597	769	699	779	642	583	565	635	675	660	625	685	701	663	16
Gloucester	223	276	288	244	259	258	255	247	300	245	261	251	252	258	1
Hudson	396	442	382	546	471	352	325	399	451	342	431	424	450	416	26
Hunterdon	52	45	50	51	47	48	38	58	52	37	39	53	58	48	5
Mercer	209	264	244	249	262	198	226	263	324	254	252	265	263	252	-2
Middlesex	464	479	418	471	423	335	317	400	466	387	435	419	439	419	20
Monmouth	373	440	374	378	346	301	301	364	361	343	308	328	413	356	85
Morris	190	224	208	246	233	186	175	250	239	216	215	238	228	219	-10
Ocean	364	398	402	418	388	376	369	376	383	401	336	403	378	384	-25
Passaic	387	443	389	534	412	317	345	422	461	422	449	421	504	424	83
Salem	60	71	96	105	81	68	53	102	72	89	81	94	67	80	-27
Somerset	131	153	154	178	163	158	128	155	153	157	143	141	160	152	19
Sussex	85	109	104	97	112	103	84	89	104	103	95	95	113	99	18
Union	278	360	307	299	305	228	215	276	304	257	318	299	331	291	32
Warren	119	92	101	117	102	89	94	101	107	81	78	93	87	97	-6
<b>County Subtotals</b>	<b>5,541</b>	<b>6,385</b>	<b>5,955</b>	<b>6,571</b>	<b>5,893</b>	<b>5,065</b>	<b>4,934</b>	<b>5,923</b>	<b>6,369</b>	<b>5,528</b>	<b>5,744</b>	<b>5,904</b>	<b>6,230</b>	<b>5,849</b>	<b>326</b>
Central Region IAIU	50	50	51	54	54	24	41	53	52	56	62	44	53	50	9
Metro Region IAIU	58	67	54	70	66	56	30	36	50	48	46	43	60	53	17
Northern Region IAIU	61	73	70	80	65	61	43	45	66	58	44	58	58	60	0
Southern Region IAIU	68	68	78	97	88	63	59	60	83	72	61	79	64	72	-15
<b>IAIU Subtotals</b>	<b>237</b>	<b>258</b>	<b>253</b>	<b>301</b>	<b>273</b>	<b>204</b>	<b>173</b>	<b>194</b>	<b>251</b>	<b>234</b>	<b>213</b>	<b>224</b>	<b>235</b>	<b>235</b>	<b>11</b>
<b>Unable to Determine<sup>1</sup></b>	<b>138</b>	<b>118</b>	<b>141</b>	<b>144</b>	<b>153</b>	<b>142</b>	<b>124</b>	<b>153</b>	<b>136</b>	<b>131</b>	<b>114</b>	<b>128</b>	<b>126</b>	<b>134</b>	<b>-2</b>
<b>Other Offices</b>	<b>3</b>	<b>6</b>	<b>2</b>	<b>2</b>	<b>4</b>	<b>2</b>	<b>3</b>	<b>1</b>	<b>2</b>	<b>1</b>	<b>3</b>	<b>1</b>	<b>5</b>	<b>3</b>	<b>4</b>
<b>Grand Total</b>	<b>5,919</b>	<b>6,767</b>	<b>6,351</b>	<b>7,018</b>	<b>6,323</b>	<b>5,413</b>	<b>5,234</b>	<b>6,271</b>	<b>6,758</b>	<b>5,894</b>	<b>6,074</b>	<b>6,257</b>	<b>6,596</b>	<b>6,221</b>	<b>339</b>

<sup>1</sup>CPS Reports or CWS Referrals not assigned to an office through the Assignment Designee, but were assigned to an office for an assessment or investigation.  
Data in this report is preliminary and may differ from any final report. This report is produced to ensure continuous quality improvement throughout DCF.



**Table 5: Monthly Count of CPS Reports and CWS Referrals Assigned to CP&P Local Offices**

County	Local Office	Type of Referral														Total
			Feb 2015	Mar 2015	Apr 2015	May 2015	Jun 2015	Jul 2015	Aug 2015	Sep 2015	Oct 2015	Nov 2015	Dec 2015	Jan 2016	Feb 2016	
ATLANTIC	Atlantic East	CPS	77	116	134	121	115	100	107	134	115	107	113	110	133	1,482
		CWS	26	32	32	38	24	30	26	35	30	32	36	43	34	418
		<b>Total</b>	<b>103</b>	<b>148</b>	<b>166</b>	<b>159</b>	<b>139</b>	<b>130</b>	<b>133</b>	<b>169</b>	<b>145</b>	<b>139</b>	<b>149</b>	<b>153</b>	<b>167</b>	<b>1,900</b>
	Atlantic West	CPS	85	101	86	96	81	72	77	94	101	70	82	70	88	1,103
		CWS	22	20	25	20	19	16	17	32	21	18	24	28	29	291
		<b>Total</b>	<b>107</b>	<b>121</b>	<b>111</b>	<b>116</b>	<b>100</b>	<b>88</b>	<b>94</b>	<b>126</b>	<b>122</b>	<b>88</b>	<b>106</b>	<b>98</b>	<b>117</b>	<b>1,394</b>
	County Totals	CPS	162	217	220	217	196	172	184	228	216	177	195	180	221	2,585
		CWS	48	52	57	58	43	46	43	67	51	50	60	71	63	709
		<b>Total</b>	<b>210</b>	<b>269</b>	<b>277</b>	<b>275</b>	<b>239</b>	<b>218</b>	<b>227</b>	<b>295</b>	<b>267</b>	<b>227</b>	<b>255</b>	<b>251</b>	<b>284</b>	<b>3,294</b>
BERGEN	Bergen Central	CPS	94	103	110	123	102	83	72	98	117	98	119	128	107	1,354
		CWS	32	37	36	34	32	29	29	36	50	37	41	39	51	483
		<b>Total</b>	<b>126</b>	<b>140</b>	<b>146</b>	<b>157</b>	<b>134</b>	<b>112</b>	<b>101</b>	<b>134</b>	<b>167</b>	<b>135</b>	<b>160</b>	<b>167</b>	<b>158</b>	<b>1,837</b>
	Bergen South	CPS	144	183	133	175	120	127	106	157	177	144	164	121	174	1,925
		CWS	54	63	56	50	42	45	50	54	67	57	70	45	60	713
		<b>Total</b>	<b>198</b>	<b>246</b>	<b>189</b>	<b>225</b>	<b>162</b>	<b>172</b>	<b>156</b>	<b>211</b>	<b>244</b>	<b>201</b>	<b>234</b>	<b>166</b>	<b>234</b>	<b>2,638</b>
	County Totals	CPS	238	286	243	298	222	210	178	255	294	242	283	249	281	3,279
		CWS	86	100	92	84	74	74	79	90	117	94	111	84	111	1,196
		<b>Total</b>	<b>324</b>	<b>386</b>	<b>335</b>	<b>382</b>	<b>296</b>	<b>284</b>	<b>257</b>	<b>345</b>	<b>411</b>	<b>336</b>	<b>394</b>	<b>333</b>	<b>392</b>	<b>4,475</b>
BURLINGTON	Burlington East	CPS	116	105	138	125	99	97	110	110	121	93	118	117	127	1,476
		CWS	33	29	28	37	26	38	36	36	31	28	20	32	39	413
		<b>Total</b>	<b>149</b>	<b>134</b>	<b>166</b>	<b>162</b>	<b>125</b>	<b>135</b>	<b>146</b>	<b>146</b>	<b>152</b>	<b>121</b>	<b>138</b>	<b>149</b>	<b>166</b>	<b>1,889</b>
	Burlington West	CPS	121	119	117	122	115	96	97	120	119	107	101	92	109	1,435
		CWS	35	32	36	38	34	32	41	41	32	30	29	34	40	454
		<b>Total</b>	<b>156</b>	<b>151</b>	<b>153</b>	<b>160</b>	<b>149</b>	<b>128</b>	<b>138</b>	<b>161</b>	<b>151</b>	<b>137</b>	<b>130</b>	<b>126</b>	<b>149</b>	<b>1,889</b>
	County Totals	CPS	237	224	255	247	214	193	207	230	240	200	219	209	236	2,911
		CWS	68	61	64	75	60	70	77	77	63	58	49	66	79	867
		<b>Total</b>	<b>305</b>	<b>285</b>	<b>319</b>	<b>322</b>	<b>274</b>	<b>263</b>	<b>284</b>	<b>307</b>	<b>303</b>	<b>258</b>	<b>268</b>	<b>275</b>	<b>315</b>	<b>3,778</b>
CAMDEN	Camden Central	CPS	123	127	115	122	121	105	93	116	148	101	104	127	119	1,521
		CWS	28	23	38	29	27	29	25	36	38	34	24	34	34	399
		<b>Total</b>	<b>151</b>	<b>150</b>	<b>153</b>	<b>151</b>	<b>148</b>	<b>134</b>	<b>118</b>	<b>152</b>	<b>186</b>	<b>135</b>	<b>128</b>	<b>161</b>	<b>153</b>	<b>1,920</b>
	Camden East	CPS	93	89	102	119	125	81	105	109	123	100	106	108	106	1,366
		CWS	19	30	31	30	30	30	28	21	21	32	27	28	27	354
		<b>Total</b>	<b>112</b>	<b>119</b>	<b>133</b>	<b>149</b>	<b>155</b>	<b>111</b>	<b>133</b>	<b>130</b>	<b>144</b>	<b>132</b>	<b>133</b>	<b>136</b>	<b>133</b>	<b>1,720</b>
	Camden North	CPS	85	106	89	101	116	82	77	95	120	83	108	104	105	1,271
		CWS	29	33	31	33	36	26	24	33	40	17	34	40	45	421
		<b>Total</b>	<b>114</b>	<b>139</b>	<b>120</b>	<b>134</b>	<b>152</b>	<b>108</b>	<b>101</b>	<b>128</b>	<b>160</b>	<b>100</b>	<b>142</b>	<b>144</b>	<b>150</b>	<b>1,692</b>
	Camden South	CPS	96	97	88	92	73	76	66	83	88	77	75	85	86	1,082
		CWS	32	29	12	25	24	20	20	23	31	17	20	32	29	314
		<b>Total</b>	<b>128</b>	<b>126</b>	<b>100</b>	<b>117</b>	<b>97</b>	<b>96</b>	<b>86</b>	<b>106</b>	<b>119</b>	<b>94</b>	<b>95</b>	<b>117</b>	<b>115</b>	<b>1,396</b>
	County Totals	CPS	397	419	394	434	435	344	341	403	479	361	393	424	416	5,240
		CWS	108	115	112	117	117	105	97	113	130	100	105	134	135	1,488
		<b>Total</b>	<b>505</b>	<b>534</b>	<b>506</b>	<b>551</b>	<b>552</b>	<b>449</b>	<b>438</b>	<b>516</b>	<b>609</b>	<b>461</b>	<b>498</b>	<b>558</b>	<b>551</b>	<b>6,728</b>
CAPE MAY	Cape May	CPS	54	78	63	66	57	63	69	72	87	51	64	61	51	836
		CWS	14	15	22	14	12	15	17	20	25	24	25	22	14	239
		<b>Total</b>	<b>68</b>	<b>93</b>	<b>85</b>	<b>80</b>	<b>69</b>	<b>78</b>	<b>86</b>	<b>92</b>	<b>112</b>	<b>75</b>	<b>89</b>	<b>83</b>	<b>65</b>	<b>1,075</b>
	County Totals	CPS	54	78	63	66	57	63	69	72	87	51	64	61	51	836
		CWS	14	15	22	14	12	15	17	20	25	24	25	22	14	239
		<b>Total</b>	<b>68</b>	<b>93</b>	<b>85</b>	<b>80</b>	<b>69</b>	<b>78</b>	<b>86</b>	<b>92</b>	<b>112</b>	<b>75</b>	<b>89</b>	<b>83</b>	<b>65</b>	<b>1,075</b>
CUMBERLAND	Cumberland East	CPS	52	63	50	70	66	33	36	61	42	39	46	59	52	669
		CWS	16	15	12	25	19	6	9	18	26	18	14	12	13	203
		<b>Total</b>	<b>68</b>	<b>78</b>	<b>62</b>	<b>95</b>	<b>85</b>	<b>39</b>	<b>45</b>	<b>79</b>	<b>68</b>	<b>57</b>	<b>60</b>	<b>71</b>	<b>65</b>	<b>872</b>
	Cumberland West	CPS	105	143	117	123	99	108	81	123	116	88	83	99	96	1,381
		CWS	28	32	38	31	33	26	26	29	31	32	31	25	18	380
		<b>Total</b>	<b>133</b>	<b>175</b>	<b>155</b>	<b>154</b>	<b>132</b>	<b>134</b>	<b>107</b>	<b>152</b>	<b>147</b>	<b>120</b>	<b>114</b>	<b>124</b>	<b>114</b>	<b>1,761</b>
	County Totals	CPS	157	206	167	193	165	141	117	184	158	127	129	158	148	2,050
		CWS	44	47	50	56	52	32	35	47	57	50	45	37	31	583
		<b>Total</b>	<b>201</b>	<b>253</b>	<b>217</b>	<b>249</b>	<b>217</b>	<b>173</b>	<b>152</b>	<b>231</b>	<b>215</b>	<b>177</b>	<b>174</b>	<b>195</b>	<b>179</b>	<b>2,633</b>

Table 5: Monthly Count of CPS Reports and CWS Referrals Assigned to CP&P Local Offices

County	Local Office	Type of Referral														Total
			Feb 2015	Mar 2015	Apr 2015	May 2015	Jun 2015	Jul 2015	Aug 2015	Sep 2015	Oct 2015	Nov 2015	Dec 2015	Jan 2016	Feb 2016	
ESSEX	Essex Central	CPS	68	92	105	118	81	76	85	80	105	87	72	82	85	1,136
		CWS	31	25	32	36	27	39	41	26	42	37	39	43	37	455
		<b>Total</b>	<b>99</b>	<b>117</b>	<b>137</b>	<b>154</b>	<b>108</b>	<b>115</b>	<b>126</b>	<b>106</b>	<b>147</b>	<b>124</b>	<b>111</b>	<b>125</b>	<b>122</b>	<b>1,591</b>
	Essex North	CPS	48	63	78	75	67	42	40	53	53	54	66	53	73	765
		CWS	23	26	20	20	23	18	17	22	23	21	30	29	25	297
		<b>Total</b>	<b>71</b>	<b>89</b>	<b>98</b>	<b>95</b>	<b>90</b>	<b>60</b>	<b>57</b>	<b>75</b>	<b>76</b>	<b>75</b>	<b>96</b>	<b>82</b>	<b>98</b>	<b>1,062</b>
	Essex South	CPS	70	95	75	71	51	49	49	66	57	58	56	63	79	839
		CWS	26	22	17	16	20	19	16	25	23	16	17	27	22	266
		<b>Total</b>	<b>96</b>	<b>117</b>	<b>92</b>	<b>87</b>	<b>71</b>	<b>68</b>	<b>65</b>	<b>91</b>	<b>80</b>	<b>74</b>	<b>73</b>	<b>90</b>	<b>101</b>	<b>1,105</b>
	Newark Center City	CPS	74	110	90	106	72	61	64	89	83	82	78	91	95	1,095
		CWS	21	33	15	40	27	23	29	29	35	36	39	26	30	383
		<b>Total</b>	<b>95</b>	<b>143</b>	<b>105</b>	<b>146</b>	<b>99</b>	<b>84</b>	<b>93</b>	<b>118</b>	<b>118</b>	<b>118</b>	<b>117</b>	<b>117</b>	<b>125</b>	<b>1,478</b>
	Newark Northeast	CPS	101	107	106	94	108	81	69	101	83	81	65	92	89	1,177
		CWS	27	45	27	34	28	31	26	25	37	34	33	39	30	416
		<b>Total</b>	<b>128</b>	<b>152</b>	<b>133</b>	<b>128</b>	<b>136</b>	<b>112</b>	<b>95</b>	<b>126</b>	<b>120</b>	<b>115</b>	<b>98</b>	<b>131</b>	<b>119</b>	<b>1,593</b>
	Newark South	CPS	81	120	97	127	102	113	94	88	100	106	92	107	96	1,323
		CWS	26	31	37	42	36	31	35	31	34	48	38	33	40	462
		<b>Total</b>	<b>107</b>	<b>151</b>	<b>134</b>	<b>169</b>	<b>138</b>	<b>144</b>	<b>129</b>	<b>119</b>	<b>134</b>	<b>154</b>	<b>130</b>	<b>140</b>	<b>136</b>	<b>1,785</b>
	County Totals	CPS	442	587	551	591	481	422	401	477	481	468	429	488	517	6,335
		CWS	154	182	148	188	161	161	164	158	194	192	196	197	184	2,279
<b>Total</b>		<b>596</b>	<b>769</b>	<b>699</b>	<b>779</b>	<b>642</b>	<b>583</b>	<b>565</b>	<b>635</b>	<b>675</b>	<b>660</b>	<b>625</b>	<b>685</b>	<b>701</b>	<b>8,614</b>	
GLOUCESTER	Gloucester East	CPS	96	110	114	88	85	85	98	98	109	91	101	97	93	1,265
		CWS	20	29	34	18	25	36	34	24	26	17	25	35	24	347
		<b>Total</b>	<b>116</b>	<b>139</b>	<b>148</b>	<b>106</b>	<b>110</b>	<b>121</b>	<b>132</b>	<b>122</b>	<b>135</b>	<b>108</b>	<b>126</b>	<b>132</b>	<b>117</b>	<b>1,612</b>
	Gloucester West	CPS	80	113	115	114	121	118	93	94	133	103	109	91	102	1,386
		CWS	27	24	25	24	28	19	30	31	32	34	26	28	33	361
		<b>Total</b>	<b>107</b>	<b>137</b>	<b>140</b>	<b>138</b>	<b>149</b>	<b>137</b>	<b>123</b>	<b>125</b>	<b>165</b>	<b>137</b>	<b>135</b>	<b>119</b>	<b>135</b>	<b>1,747</b>
	County Totals	CPS	176	223	229	202	206	203	191	192	242	194	210	188	195	2,651
		CWS	47	53	59	42	53	55	64	55	58	51	51	63	57	708
<b>Total</b>		<b>223</b>	<b>276</b>	<b>288</b>	<b>244</b>	<b>259</b>	<b>258</b>	<b>255</b>	<b>247</b>	<b>300</b>	<b>245</b>	<b>261</b>	<b>251</b>	<b>252</b>	<b>3,359</b>	
HUDSON	Hudson Central	CPS	84	90	89	112	88	71	60	62	72	59	79	75	89	1,030
		CWS	25	30	30	22	30	24	30	25	26	16	25	23	28	334
		<b>Total</b>	<b>109</b>	<b>120</b>	<b>119</b>	<b>134</b>	<b>118</b>	<b>95</b>	<b>90</b>	<b>87</b>	<b>98</b>	<b>75</b>	<b>104</b>	<b>98</b>	<b>117</b>	<b>1,364</b>
	Hudson North	CPS	70	73	65	107	96	60	54	91	86	74	87	95	77	1,035
		CWS	22	29	19	28	27	18	16	22	31	29	30	37	35	343
		<b>Total</b>	<b>92</b>	<b>102</b>	<b>84</b>	<b>135</b>	<b>123</b>	<b>78</b>	<b>70</b>	<b>113</b>	<b>117</b>	<b>103</b>	<b>117</b>	<b>132</b>	<b>112</b>	<b>1,378</b>
	Hudson South	CPS	80	87	70	103	93	79	71	66	93	61	93	60	81	1,037
		CWS	32	31	23	46	29	23	19	31	28	22	28	20	25	357
		<b>Total</b>	<b>112</b>	<b>118</b>	<b>93</b>	<b>149</b>	<b>122</b>	<b>102</b>	<b>90</b>	<b>97</b>	<b>121</b>	<b>83</b>	<b>121</b>	<b>80</b>	<b>106</b>	<b>1,394</b>
	Hudson West	CPS	65	77	71	103	77	57	55	77	82	60	74	87	90	975
		CWS	18	25	15	25	31	20	20	25	33	21	15	27	25	300
<b>Total</b>		<b>83</b>	<b>102</b>	<b>86</b>	<b>128</b>	<b>108</b>	<b>77</b>	<b>75</b>	<b>102</b>	<b>115</b>	<b>81</b>	<b>89</b>	<b>114</b>	<b>115</b>	<b>1,275</b>	
County Totals	CPS	299	327	295	425	354	267	240	296	333	254	333	317	337	4,077	
	CWS	97	115	87	121	117	85	85	103	118	88	98	107	113	1,334	
	<b>Total</b>	<b>396</b>	<b>442</b>	<b>382</b>	<b>546</b>	<b>471</b>	<b>352</b>	<b>325</b>	<b>399</b>	<b>451</b>	<b>342</b>	<b>431</b>	<b>424</b>	<b>450</b>	<b>5,411</b>	
HUNTERDON	Hunterdon	CPS	39	28	33	32	32	35	27	41	40	27	27	35	41	437
		CWS	13	17	17	19	15	13	11	17	12	10	12	18	17	191
		<b>Total</b>	<b>52</b>	<b>45</b>	<b>50</b>	<b>51</b>	<b>47</b>	<b>48</b>	<b>38</b>	<b>58</b>	<b>52</b>	<b>37</b>	<b>39</b>	<b>53</b>	<b>58</b>	<b>628</b>
	County Totals	CPS	39	28	33	32	32	35	27	41	40	27	27	35	41	437
		CWS	13	17	17	19	15	13	11	17	12	10	12	18	17	191
<b>Total</b>		<b>52</b>	<b>45</b>	<b>50</b>	<b>51</b>	<b>47</b>	<b>48</b>	<b>38</b>	<b>58</b>	<b>52</b>	<b>37</b>	<b>39</b>	<b>53</b>	<b>58</b>	<b>628</b>	
MERCER	Mercer North	CPS	78	82	98	94	92	70	82	87	115	79	89	91	98	1,155
		CWS	29	43	23	27	25	29	18	33	40	46	33	37	29	412
		<b>Total</b>	<b>107</b>	<b>125</b>	<b>121</b>	<b>121</b>	<b>117</b>	<b>99</b>	<b>100</b>	<b>120</b>	<b>155</b>	<b>125</b>	<b>122</b>	<b>128</b>	<b>127</b>	<b>1,567</b>
	Mercer South	CPS	75	110	94	96	103	76	107	107	125	98	100	102	108	1,301
		CWS	27	29	29	32	42	23	19	36	44	31	30	35	28	405
		<b>Total</b>	<b>102</b>	<b>139</b>	<b>123</b>	<b>128</b>	<b>145</b>	<b>99</b>	<b>126</b>	<b>143</b>	<b>169</b>	<b>129</b>	<b>130</b>	<b>137</b>	<b>136</b>	<b>1,706</b>
	County Totals	CPS	153	192	192	190	195	146	189	194	240	177	189	193	206	2,456
CWS		56	72	52	59	67	52	37	69	84	77	63	72	57	817	
<b>Total</b>		<b>209</b>	<b>264</b>	<b>244</b>	<b>249</b>	<b>262</b>	<b>198</b>	<b>226</b>	<b>263</b>	<b>324</b>	<b>254</b>	<b>252</b>	<b>265</b>	<b>263</b>	<b>3,273</b>	

Data in this report is preliminary and may differ from any final report. This report is produced to ensure continuous quality improvement throughout DCF.

**Table 5: Monthly Count of CPS Reports and CWS Referrals Assigned to CP&P Local Offices**

County	Local Office	Type of Referral													Total	
			Feb 2015	Mar 2015	Apr 2015	May 2015	Jun 2015	Jul 2015	Aug 2015	Sep 2015	Oct 2015	Nov 2015	Dec 2015	Jan 2016		Feb 2016
<b>MIDDLESEX</b>	<b>Middlesex Central</b>	CPS	75	83	85	89	65	52	56	86	86	66	91	70	78	982
		CWS	16	20	21	27	17	25	18	28	27	20	27	25	23	294
		<b>Total</b>	<b>91</b>	<b>103</b>	<b>106</b>	<b>116</b>	<b>82</b>	<b>77</b>	<b>74</b>	<b>114</b>	<b>113</b>	<b>86</b>	<b>118</b>	<b>95</b>	<b>101</b>	<b>1,276</b>
	<b>Middlesex Coastal</b>	CPS	135	154	122	151	128	101	105	110	132	110	119	104	129	1,600
		CWS	46	49	34	37	44	43	24	33	35	38	33	41	46	503
		<b>Total</b>	<b>181</b>	<b>203</b>	<b>156</b>	<b>188</b>	<b>172</b>	<b>144</b>	<b>129</b>	<b>143</b>	<b>167</b>	<b>148</b>	<b>152</b>	<b>145</b>	<b>175</b>	<b>2,103</b>
	<b>Middlesex West</b>	CPS	155	139	122	138	132	94	84	105	132	118	114	132	131	1,596
		CWS	37	34	34	29	37	20	30	38	54	35	51	47	32	478
		<b>Total</b>	<b>192</b>	<b>173</b>	<b>156</b>	<b>167</b>	<b>169</b>	<b>114</b>	<b>114</b>	<b>143</b>	<b>186</b>	<b>153</b>	<b>165</b>	<b>179</b>	<b>163</b>	<b>2,074</b>
	<b>County Totals</b>	CPS	365	376	329	378	325	247	245	301	350	294	324	306	338	4,178
CWS		99	103	89	93	98	88	72	99	116	93	111	113	101	1,275	
<b>Total</b>		<b>464</b>	<b>479</b>	<b>418</b>	<b>471</b>	<b>423</b>	<b>335</b>	<b>317</b>	<b>400</b>	<b>466</b>	<b>387</b>	<b>435</b>	<b>419</b>	<b>439</b>	<b>5,453</b>	
<b>MONMOUTH</b>	<b>Monmouth North</b>	CPS	158	181	156	164	152	129	119	159	160	134	135	135	184	1,966
		CWS	50	47	40	43	39	37	33	58	51	50	47	35	44	574
		<b>Total</b>	<b>208</b>	<b>228</b>	<b>196</b>	<b>207</b>	<b>191</b>	<b>166</b>	<b>152</b>	<b>217</b>	<b>211</b>	<b>184</b>	<b>182</b>	<b>170</b>	<b>228</b>	<b>2,540</b>
	<b>Monmouth South</b>	CPS	122	171	146	128	125	108	111	118	118	118	95	115	130	1,605
		CWS	43	41	32	43	30	27	38	29	32	41	31	43	55	485
		<b>Total</b>	<b>165</b>	<b>212</b>	<b>178</b>	<b>171</b>	<b>155</b>	<b>135</b>	<b>149</b>	<b>147</b>	<b>150</b>	<b>159</b>	<b>126</b>	<b>158</b>	<b>185</b>	<b>2,090</b>
	<b>County Totals</b>	CPS	280	352	302	292	277	237	230	277	278	252	230	250	314	3,571
		CWS	93	88	72	86	69	64	71	87	83	91	78	78	99	1,059
		<b>Total</b>	<b>373</b>	<b>440</b>	<b>374</b>	<b>378</b>	<b>346</b>	<b>301</b>	<b>301</b>	<b>364</b>	<b>361</b>	<b>343</b>	<b>308</b>	<b>328</b>	<b>413</b>	<b>4,630</b>
	<b>MORRIS</b>	<b>Morris East</b>	CPS	70	80	84	74	74	61	59	85	95	68	47	73	77
CWS			21	28	21	23	22	27	20	29	26	27	27	24	34	329
<b>Total</b>			<b>91</b>	<b>108</b>	<b>105</b>	<b>97</b>	<b>96</b>	<b>88</b>	<b>79</b>	<b>114</b>	<b>121</b>	<b>95</b>	<b>74</b>	<b>97</b>	<b>111</b>	<b>1,276</b>
<b>Morris West</b>		CPS	83	84	70	102	92	69	74	100	87	90	98	114	83	1,146
		CWS	16	32	33	47	45	29	22	36	31	31	43	27	34	426
		<b>Total</b>	<b>99</b>	<b>116</b>	<b>103</b>	<b>149</b>	<b>137</b>	<b>98</b>	<b>96</b>	<b>136</b>	<b>118</b>	<b>121</b>	<b>141</b>	<b>141</b>	<b>117</b>	<b>1,572</b>
<b>County Totals</b>		CPS	153	164	154	176	166	130	133	185	182	158	145	187	160	2,093
		CWS	37	60	54	70	67	56	42	65	57	58	70	51	68	755
		<b>Total</b>	<b>190</b>	<b>224</b>	<b>208</b>	<b>246</b>	<b>233</b>	<b>186</b>	<b>175</b>	<b>250</b>	<b>239</b>	<b>216</b>	<b>215</b>	<b>238</b>	<b>228</b>	<b>2,848</b>
<b>OCEAN</b>		<b>Ocean North</b>	CPS	144	132	149	144	145	120	119	118	145	161	125	142	146
	CWS		36	54	45	52	38	34	39	43	32	57	43	63	50	586
	<b>Total</b>		<b>180</b>	<b>186</b>	<b>194</b>	<b>196</b>	<b>183</b>	<b>154</b>	<b>158</b>	<b>161</b>	<b>177</b>	<b>218</b>	<b>168</b>	<b>205</b>	<b>196</b>	<b>2,376</b>
	<b>Ocean South</b>	CPS	144	171	161	172	167	178	171	170	162	135	130	151	137	2,049
		CWS	40	41	47	50	38	44	40	45	44	48	38	47	45	567
		<b>Total</b>	<b>184</b>	<b>212</b>	<b>208</b>	<b>222</b>	<b>205</b>	<b>222</b>	<b>211</b>	<b>215</b>	<b>206</b>	<b>183</b>	<b>168</b>	<b>198</b>	<b>182</b>	<b>2,616</b>
	<b>County Totals</b>	CPS	288	303	310	316	312	298	290	288	307	296	255	293	283	3,839
		CWS	76	95	92	102	76	78	79	88	76	105	81	110	95	1,153
		<b>Total</b>	<b>364</b>	<b>398</b>	<b>402</b>	<b>418</b>	<b>388</b>	<b>376</b>	<b>369</b>	<b>376</b>	<b>383</b>	<b>401</b>	<b>336</b>	<b>403</b>	<b>378</b>	<b>4,992</b>
	<b>PASSAIC</b>	<b>Passaic Central</b>	CPS	149	161	143	221	152	118	133	159	161	163	178	144	202
CWS			45	77	63	67	58	52	55	55	91	66	68	68	89	854
<b>Total</b>			<b>194</b>	<b>238</b>	<b>206</b>	<b>288</b>	<b>210</b>	<b>170</b>	<b>188</b>	<b>214</b>	<b>252</b>	<b>229</b>	<b>246</b>	<b>212</b>	<b>291</b>	<b>2,938</b>
<b>Passaic North</b>		CPS	148	138	137	190	151	116	123	142	153	141	137	152	159	1,887
		CWS	45	67	46	56	51	31	34	66	56	52	66	57	54	681
		<b>Total</b>	<b>193</b>	<b>205</b>	<b>183</b>	<b>246</b>	<b>202</b>	<b>147</b>	<b>157</b>	<b>208</b>	<b>209</b>	<b>193</b>	<b>203</b>	<b>209</b>	<b>213</b>	<b>2,568</b>
<b>County Totals</b>		CPS	297	299	280	411	303	234	256	301	314	304	315	296	361	3,971
		CWS	90	144	109	123	109	83	89	121	147	118	134	125	143	1,535
		<b>Total</b>	<b>387</b>	<b>443</b>	<b>389</b>	<b>534</b>	<b>412</b>	<b>317</b>	<b>345</b>	<b>422</b>	<b>461</b>	<b>422</b>	<b>449</b>	<b>421</b>	<b>504</b>	<b>5,506</b>
<b>SALEM</b>		<b>Salem</b>	CPS	47	52	84	78	66	51	35	77	47	75	58	72	43
	CWS		13	19	12	27	15	17	18	25	25	14	23	22	24	254
	<b>Total</b>		<b>60</b>	<b>71</b>	<b>96</b>	<b>105</b>	<b>81</b>	<b>68</b>	<b>53</b>	<b>102</b>	<b>72</b>	<b>89</b>	<b>81</b>	<b>94</b>	<b>67</b>	<b>1,039</b>
	<b>County Totals</b>	CPS	47	52	84	78	66	51	35	77	47	75	58	72	43	785
		CWS	13	19	12	27	15	17	18	25	25	14	23	22	24	254
		<b>Total</b>	<b>60</b>	<b>71</b>	<b>96</b>	<b>105</b>	<b>81</b>	<b>68</b>	<b>53</b>	<b>102</b>	<b>72</b>	<b>89</b>	<b>81</b>	<b>94</b>	<b>67</b>	<b>1,039</b>
<b>SOMERSET</b>	<b>Somerset</b>	CPS	101	111	117	131	122	126	88	120	121	121	104	104	120	1,486
		CWS	30	42	37	47	41	32	40	35	32	36	39	37	40	488
		<b>Total</b>	<b>131</b>	<b>153</b>	<b>154</b>	<b>178</b>	<b>163</b>	<b>158</b>	<b>128</b>	<b>155</b>	<b>153</b>	<b>157</b>	<b>143</b>	<b>141</b>	<b>160</b>	<b>1,974</b>
	<b>County Totals</b>	CPS	101	111	117	131	122	126	88	120	121	121	104	104	120	1,486
		CWS	30	42	37	47	41	32	40	35	32	36	39	37	40	488
		<b>Total</b>	<b>131</b>	<b>153</b>	<b>154</b>	<b>178</b>	<b>163</b>	<b>158</b>	<b>128</b>	<b>155</b>	<b>153</b>	<b>157</b>	<b>143</b>	<b>141</b>	<b>160</b>	<b>1,974</b>

Data in this report is preliminary and may differ from any final report. This report is produced to ensure continuous quality improvement throughout DCF.

**Table 5: Monthly Count of CPS Reports and CWS Referrals Assigned to CP&P Local Offices**

County	Local Office	Type of Referral														Total
			Feb 2015	Mar 2015	Apr 2015	May 2015	Jun 2015	Jul 2015	Aug 2015	Sep 2015	Oct 2015	Nov 2015	Dec 2015	Jan 2016	Feb 2016	
SUSSEX	Sussex	CPS	64	80	84	74	77	86	71	73	83	72	68	82	83	997
		CWS	21	29	20	23	35	17	13	16	21	31	27	13	30	296
		<b>Total</b>	<b>85</b>	<b>109</b>	<b>104</b>	<b>97</b>	<b>112</b>	<b>103</b>	<b>84</b>	<b>89</b>	<b>104</b>	<b>103</b>	<b>95</b>	<b>95</b>	<b>113</b>	<b>1,293</b>
	County Totals	CPS	64	80	84	74	77	86	71	73	83	72	68	82	83	997
		CWS	21	29	20	23	35	17	13	16	21	31	27	13	30	296
		<b>Total</b>	<b>85</b>	<b>109</b>	<b>104</b>	<b>97</b>	<b>112</b>	<b>103</b>	<b>84</b>	<b>89</b>	<b>104</b>	<b>103</b>	<b>95</b>	<b>95</b>	<b>113</b>	<b>1,293</b>
UNION	Union Central	CPS	75	86	81	85	83	56	52	65	67	64	71	74	85	944
		CWS	19	30	21	19	20	25	26	24	24	14	27	32	29	310
		<b>Total</b>	<b>94</b>	<b>116</b>	<b>102</b>	<b>104</b>	<b>103</b>	<b>81</b>	<b>78</b>	<b>89</b>	<b>91</b>	<b>78</b>	<b>98</b>	<b>106</b>	<b>114</b>	<b>1,254</b>
	Union East	CPS	73	92	85	69	80	51	49	67	74	68	91	75	78	952
		CWS	24	43	27	33	32	8	23	27	35	26	34	25	30	367
		<b>Total</b>	<b>97</b>	<b>135</b>	<b>112</b>	<b>102</b>	<b>112</b>	<b>59</b>	<b>72</b>	<b>94</b>	<b>109</b>	<b>94</b>	<b>125</b>	<b>100</b>	<b>108</b>	<b>1,319</b>
	Union West	CPS	66	81	64	71	62	59	50	70	77	58	65	65	79	867
		CWS	21	28	29	22	28	29	15	23	27	27	30	28	30	337
		<b>Total</b>	<b>87</b>	<b>109</b>	<b>93</b>	<b>93</b>	<b>90</b>	<b>88</b>	<b>65</b>	<b>93</b>	<b>104</b>	<b>85</b>	<b>95</b>	<b>93</b>	<b>109</b>	<b>1,204</b>
	County Totals	CPS	214	259	230	225	225	166	151	202	218	190	227	214	242	2,763
		CWS	64	101	77	74	80	62	64	74	86	67	91	85	89	1,014
		<b>Total</b>	<b>278</b>	<b>360</b>	<b>307</b>	<b>299</b>	<b>305</b>	<b>228</b>	<b>215</b>	<b>276</b>	<b>304</b>	<b>257</b>	<b>318</b>	<b>299</b>	<b>331</b>	<b>3,777</b>
WARREN	Warren	CPS	87	66	82	84	78	71	71	81	87	58	55	72	64	956
		CWS	32	26	19	33	24	18	23	20	20	23	23	21	23	305
		<b>Total</b>	<b>119</b>	<b>92</b>	<b>101</b>	<b>117</b>	<b>102</b>	<b>89</b>	<b>94</b>	<b>101</b>	<b>107</b>	<b>81</b>	<b>78</b>	<b>93</b>	<b>87</b>	<b>1,261</b>
	County Totals	CPS	87	66	82	84	78	71	71	81	87	58	55	72	64	956
		CWS	32	26	19	33	24	18	23	20	20	23	23	21	23	305
		<b>Total</b>	<b>119</b>	<b>92</b>	<b>101</b>	<b>117</b>	<b>102</b>	<b>89</b>	<b>94</b>	<b>101</b>	<b>107</b>	<b>81</b>	<b>78</b>	<b>93</b>	<b>87</b>	<b>1,261</b>
<b>County CPS Referral Total</b>	CPS	<b>4,250</b>	<b>4,849</b>	<b>4,614</b>	<b>5,060</b>	<b>4,508</b>	<b>3,842</b>	<b>3,714</b>	<b>4,477</b>	<b>4,797</b>	<b>4,098</b>	<b>4,252</b>	<b>4,378</b>	<b>4,657</b>	<b>57,496</b>	
<b>County CWS Referral Total</b>	CWS	<b>1,290</b>	<b>1,536</b>	<b>1,341</b>	<b>1,511</b>	<b>1,385</b>	<b>1,223</b>	<b>1,220</b>	<b>1,446</b>	<b>1,572</b>	<b>1,430</b>	<b>1,492</b>	<b>1,526</b>	<b>1,573</b>	<b>18,545</b>	
<b>County Referral Total</b>	<b>Total</b>	<b>5,540</b>	<b>6,385</b>	<b>5,955</b>	<b>6,571</b>	<b>5,893</b>	<b>5,065</b>	<b>4,934</b>	<b>5,923</b>	<b>6,369</b>	<b>5,528</b>	<b>5,744</b>	<b>5,904</b>	<b>6,230</b>	<b>76,041</b>	
Central Region IAIU	CPS	50	50	51	54	54	63	41	53	52	56	62	44	53	683	
	CWS	0	0	0	0	0	0	0	0	0	0	0	0	0	0	
	<b>Total</b>	<b>50</b>	<b>50</b>	<b>51</b>	<b>54</b>	<b>54</b>	<b>63</b>	<b>41</b>	<b>53</b>	<b>52</b>	<b>56</b>	<b>62</b>	<b>44</b>	<b>53</b>	<b>683</b>	
Metro Region IAIU	CPS	59	67	54	70	66	24	30	36	50	48	46	43	60	653	
	CWS	0	0	0	0	0	0	0	0	0	0	0	0	0	0	
	<b>Total</b>	<b>59</b>	<b>67</b>	<b>54</b>	<b>70</b>	<b>66</b>	<b>24</b>	<b>30</b>	<b>36</b>	<b>50</b>	<b>48</b>	<b>46</b>	<b>43</b>	<b>60</b>	<b>653</b>	
Northern Region IAIU	CPS	61	73	70	80	65	56	43	45	66	58	44	58	58	777	
	CWS	0	0	0	0	0	0	0	0	0	0	0	0	0	0	
	<b>Total</b>	<b>61</b>	<b>73</b>	<b>70</b>	<b>80</b>	<b>65</b>	<b>56</b>	<b>43</b>	<b>45</b>	<b>66</b>	<b>58</b>	<b>44</b>	<b>58</b>	<b>58</b>	<b>777</b>	
Southern Region IAIU	CPS	68	68	78	97	88	61	59	60	83	72	61	79	64	938	
	CWS	0	0	0	0	0	0	0	0	0	0	0	0	0	0	
	<b>Total</b>	<b>68</b>	<b>68</b>	<b>78</b>	<b>97</b>	<b>88</b>	<b>61</b>	<b>59</b>	<b>60</b>	<b>83</b>	<b>72</b>	<b>61</b>	<b>79</b>	<b>64</b>	<b>938</b>	
<b>IAIU CPS Subtotal</b>	CPS	<b>238</b>	<b>258</b>	<b>253</b>	<b>301</b>	<b>273</b>	<b>204</b>	<b>173</b>	<b>194</b>	<b>251</b>	<b>234</b>	<b>213</b>	<b>224</b>	<b>235</b>	<b>3,051</b>	
<b>IAIU CWS Subtotal</b>	CWS	<b>0</b>	<b>0</b>	<b>0</b>	<b>0</b>	<b>0</b>	<b>0</b>	<b>0</b>	<b>0</b>	<b>0</b>	<b>0</b>	<b>0</b>	<b>0</b>	<b>0</b>	<b>0</b>	
<b>IAIU Subtotal</b>	<b>Total</b>	<b>238</b>	<b>258</b>	<b>253</b>	<b>301</b>	<b>273</b>	<b>204</b>	<b>173</b>	<b>194</b>	<b>251</b>	<b>234</b>	<b>213</b>	<b>224</b>	<b>235</b>	<b>3,051</b>	
<b>County and IAIU CPS Subtotal</b>	CPS	<b>4,488</b>	<b>5,107</b>	<b>4,867</b>	<b>5,361</b>	<b>4,781</b>	<b>4,046</b>	<b>3,887</b>	<b>4,671</b>	<b>5,048</b>	<b>4,332</b>	<b>4,465</b>	<b>4,602</b>	<b>4,892</b>	<b>60,547</b>	
<b>County and IAIU CWS Subtotal</b>	CWS	<b>1,290</b>	<b>1,536</b>	<b>1,341</b>	<b>1,511</b>	<b>1,385</b>	<b>1,223</b>	<b>1,220</b>	<b>1,446</b>	<b>1,573</b>	<b>1,430</b>	<b>1,492</b>	<b>1,526</b>	<b>1,573</b>	<b>18,546</b>	
<b>Unable to Determine<sup>(1)</sup></b>	<b>Total</b>	<b>138</b>	<b>118</b>	<b>141</b>	<b>144</b>	<b>153</b>	<b>142</b>	<b>124</b>	<b>153</b>	<b>136</b>	<b>131</b>	<b>114</b>	<b>128</b>	<b>126</b>	<b>1,748</b>	
<b>Other Offices</b>	<b>Total</b>	<b>3</b>	<b>6</b>	<b>2</b>	<b>2</b>	<b>4</b>	<b>2</b>	<b>3</b>	<b>1</b>	<b>1</b>	<b>1</b>	<b>3</b>	<b>1</b>	<b>5</b>	<b>34</b>	
<b>Grand Total</b>	<b>Total</b>	<b>5,919</b>	<b>6,767</b>	<b>6,351</b>	<b>7,018</b>	<b>6,323</b>	<b>5,413</b>	<b>5,234</b>	<b>6,271</b>	<b>6,758</b>	<b>5,894</b>	<b>6,074</b>	<b>6,257</b>	<b>6,596</b>	<b>80,875</b>	

<sup>(1)</sup>CPS Reports or CWS Referrals not assigned to an office through the Assignment Designee, but were assigned to an office for an assessment or investigation.