



Child Protection and Permanency

Monthly Screening and Investigation Report February 2017

Allison Blake, Ph.D., L.S.W.
Commissioner

March 31, 2017



Table of Contents

Table 1: NJ State Central Registry Activity: Monthly Child Abuse and Neglect Hotline Calls, Intakes and Assignments to Child Protection & Permanency (CP&P) Offices

Chart 1: CP&P Annual Trends in Child Protection Services (CPS) Reports and Child Welfare Services (CWS) Referrals

Table 2: Assignments to CP&P Offices: CPS Reports and CWS Referrals

Table 3: Source of CPS Reports and CWS Referrals

Table 4: Monthly Count of CPS Reports and CWS Referrals Assigned to Counties

Table 5: Monthly Count of CPS Reports and CWS Referrals Assigned to CP&P Local Offices

Table 1: NJ State Central Registry Activity: Monthly Child Abuse and Neglect Hotline Calls, Intakes and Assignments to CP&P Offices^{1,2,7}

2016 - 2017	Hotline Call Activity				Intakes Recorded in NJ SPIRIT ^{6,8}												Assignments to CP&P Offices				
	Total Calls to SCR ³	Abandon Calls ⁴	Average Time to Answer (seconds)	Resulting NJS Intakes ⁵	CPS Reports		CWS Referrals		No Action Required (NAR)		Related Information (RI)		Information & Referral (I&R)		Information Only (IO)		CPS Reports		CWS Referrals		Total
					n	%	n	%	n	%	n	%	n	%	n	%	n	%	n	%	
February 2016	13,927	590	40	15,143	4,974	32.8%	1,620	10.7%	419	2.8%	3,836	25.3%	1,627	10.7%	2,667	17.6%	4,974	75.4%	1,622	24.6%	6,596
March 2016	14,064	446	32	15,619	5,000	32.0%	1,671	10.7%	428	2.7%	3,912	25.0%	1,812	11.6%	2,796	17.9%	5,000	75.0%	1,669	25.0%	6,669
April 2016	13,995	448	29	15,326	5,065	33.0%	1,541	10.1%	348	2.3%	3,774	24.6%	1,742	11.4%	2,856	18.6%	5,065	76.7%	1,542	23.3%	6,607
May 2016	14,389	413	26	15,806	5,238	33.1%	1,634	10.3%	393	2.5%	3,902	24.7%	1,852	11.7%	2,787	17.6%	5,238	76.2%	1,633	23.8%	6,871
June 2016	13,304	396	26	14,592	4,602	31.5%	1,460	10.0%	336	2.3%	3,687	25.3%	1,808	12.4%	2,699	18.5%	4,602	75.9%	1,461	24.1%	6,063
July 2016	11,304	338	25	12,531	3,663	29.2%	1,186	9.5%	295	2.4%	3,477	27.7%	1,376	11.0%	2,534	20.2%	3,663	75.5%	1,187	24.5%	4,850
August 2016	11,766	270	18	13,169	3,941	29.9%	1,308	9.9%	491	3.7%	3,311	25.1%	1,471	11.2%	2,647	20.1%	3,941	75.1%	1,307	24.9%	5,248
September 2016	13,277	383	25	14,637	4,654	31.8%	1,557	10.6%	305	2.1%	3,868	26.4%	1,699	11.6%	2,554	17.4%	4,654	74.9%	1,559	25.1%	6,213
October 2016	13,924	387	24	15,418	4,935	32.0%	1,623	10.5%	368	2.4%	4,100	26.6%	1,767	11.5%	2,625	17.0%	4,935	75.3%	1,622	24.7%	6,557
November 2016	13,310	441	30	14,666	4,677	31.9%	1,551	10.6%	300	2.0%	3,969	27.1%	1,667	11.4%	2,502	17.1%	4,677	75.1%	1,552	24.9%	6,229
December 2016	13,294	424	32	14,626	4,762	32.6%	1,579	10.8%	352	2.4%	3,916	26.8%	1,598	10.9%	2,419	16.5%	4,762	75.1%	1,580	24.9%	6,342
January 2017	14,182	603	45	15,375	5,111	33.2%	1,708	11.1%	321	2.1%	4,221	27.5%	1,670	10.9%	2,344	15.2%	5,111	75.0%	1,708	25.0%	6,819
February 2017	13,261	524	39	14,478	4,716	32.6%	1,503	10.4%	258	1.8%	3,882	26.8%	1,645	11.4%	2,474	17.1%	4,716	75.8%	1,504	24.2%	6,220
	13,384	436	30	14,722	4,718	32.0%	1,534	10.4%	355	2.4%	3,835	26.0%	1,672	11.4%	2,608	17.7%	4,718	75.5%	1,534	24.5%	6,253
Overall Total	173,997	5,663		191,386	61,338		19,941		4,614		49,855		21,734		33,904		61,338	75.5%	19,946	24.5%	81,284

¹ Comes from three distinct sources: (1) the Automatic Call Distribution (ACD) phone system; which keeps a count of the number of calls and call routing; (2) Monthly NJSpirit Intakes; which record decision making on calls received by hotline screeners, and (3) NJSpirit extracts of assigned CWS Referrals and CPS Reports.

² The number of Intakes, CPS Reports, and CWS Referrals are based on an extract from NJSpirit. Data extracted by the Office of Research, Evaluation, and Reporting on **March 31, 2017** includes all Intakes, CPS Reports, and CWS Referrals received from **February 1, 2017 through February 28, 2017**.

³ The number calls received through the ACD System that were directed to a screener from any call-in phone number.

⁴ The number of calls received through the ACD System that are abandoned either while waiting in queue or while ringing.

⁵ The number of Intakes entered in NJSpirit from the number of calls received.

⁶ The number of Intakes recorded in NJSpirit, by type of Intake. There is not a one-to-one relationship between an ACD call and an Intake; multiple calls to State Central Registry (SCR) may result in a single Intake, or one call may result in multiple Intakes.

⁷ Intake: The process of documenting: a report of alleged abuse or neglect of a child (CPS); a request for services on behalf of a child, or a referral of a child for services (CWS); a call in which the caller provides additional or clarifying information about a current service case or active investigation (RI); informing a caller of, or referring a caller to, services available from other private or public sources (I&R); a call that requires no action by CP&P (NAR); or a response to a simple inquiry (IO).

⁸ NJ SPIRIT: NJ Statewide Protection Investigation and Reporting Information Tool case management system

CP&P Annual Trends in CPS Reports and CWS Referrals

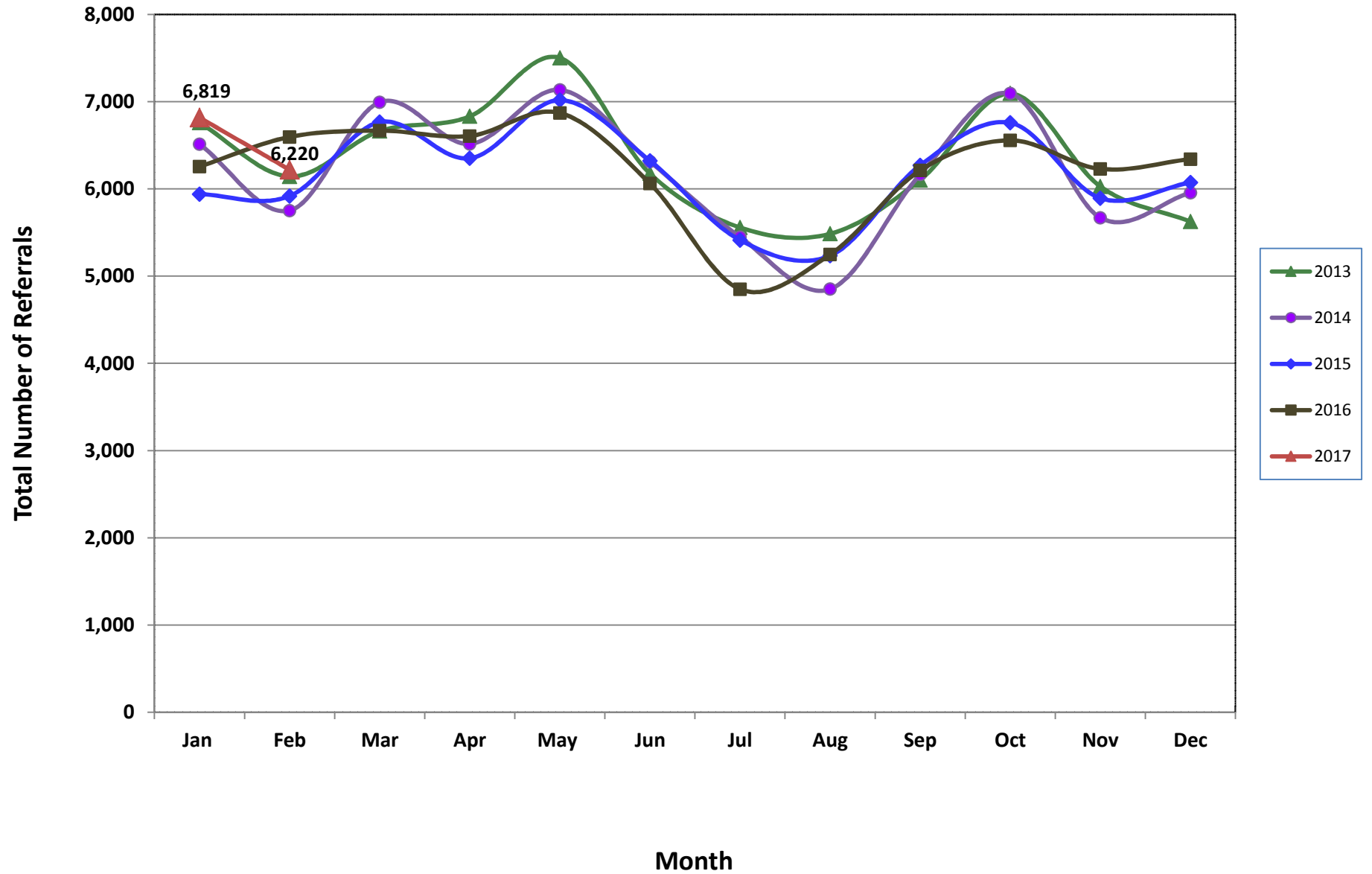


Table 2: Assignments to CP&P Offices: CPS Reports and CWS Referrals¹

Intake Date ³		CPS Reports ²	CWS Referrals ²	Total Assignments ²
2013	Jan 2013	5,464	1,296	6,760
	Feb 2013	4,966	1,177	6,143
	Mar 2013	5,355	1,309	6,664
	Apr 2013	5,430	1,402	6,832
	May 2013	5,993	1,510	7,503
	Jun 2013	4,947	1,230	6,177
	Jul 2013	4,330	1,228	5,558
	Aug 2013	4,330	1,155	5,485
	Sep 2013	4,851	1,251	6,102
	Oct 2013	5,614	1,481	7,095
	Nov 2013	4,694	1,334	6,028
	Dec 2013	4,397	1,229	5,626
	Total	60,371	15,602	75,973
2014	Jan 2014	5,097	1,416	6,513
	Feb 2014	4,457	1,295	5,752
	Mar 2014	5,408	1,586	6,994
	Apr 2014	5,049	1,467	6,516
	May 2014	5,501	1,635	7,136
	Jun 2014	4,796	1,517	6,313
	Jul 2014	4,202	1,247	5,449
	Aug 2014	3,629	1,222	4,851
	Sep 2014	4,668	1,498	6,166
	Oct 2014	5,509	1,586	7,095
	Nov 2014	4,254	1,416	5,670
	Dec 2014	4,509	1,447	5,956
	Total	57,079	17,332	74,411
2015	Jan 2015	4,549	1,391	5,940
	Feb 2015	4,574	1,345	5,919
	Mar 2015	5,187	1,580	6,767
	Apr 2015	4,967	1,384	6,351
	May 2015	5,457	1,561	7,018
	Jun 2015	4,887	1,436	6,323
	Jul 2015	4,140	1,273	5,413
	Aug 2015	3,978	1,256	5,234
	Sep 2015	4,776	1,495	6,271
	Oct 2015	5,139	1,619	6,758
	Nov 2015	4,417	1,477	5,894
	Dec 2015	4,530	1,544	6,074
	Total	56,601	17,361	73,962

Table 2: Assignments to CP&P Offices: CPS Reports and CWS Referrals¹

Intake Date ³		CPS Reports ²	CWS Referrals ²	Total Assignments ²
2016	Jan 2016	4,686	1,571	6,257
	Feb 2016	4,974	1,622	6,596
	Mar 2016	5,000	1,669	6,669
	Apr 2016	5,065	1,542	6,607
	May 2016	5,238	1,633	6,871
	Jun 2016	4,602	1,461	6,063
	Jul 2016	3,663	1,187	4,850
	Aug 2016	3,941	1,307	5,248
	Sep 2016	4,654	1,559	6,213
	Oct 2016	4,935	1,622	6,557
	Nov 2016	4,677	1,552	6,229
	Dec 2016	4,762	1,580	6,342
	Total	56,197	18,305	74,502
2017	Jan 2017	5,111	1,708	6,819
	Feb 2017	4,716	1,504	6,220
	Total	9,827	3,212	13,039
Grand Total		240,075	71,812	311,887

¹Source of Data: NJ SPIRIT

²A CPS Report or a CWS Referral may include multiple children in a family, with one or more allegation or request for services. In these cases, each CPS Report or CWS Referral is counted once - the CPS Report or the CWS Referral is the unit of analysis rather than the child.

³Prior to January 2014, the number of CPS Reports and CWS Referrals was based on the type of assignment of the CPS Report or CWS Referral. Beginning in January 2014, the number of CPS Reports and CWS Referrals is based on the number of CPS Reports and CWS Referrals received.

Table 3: Source of CPS Reports and CWS Referrals

	Source	Feb 2016	Mar 2016	Apr 2016	May 2016	Jun 2016	Jul 2016	Aug 2016	Sep 2016	Oct 2016	Nov 2016	Dec 2016	Jan 2017	Feb 2017		13 Month Total	
CPS Reports and CWS Referrals	School Staff	1,900	1,690	1,646	1,765	982	143	87	1,150	1,639	1,628	1,614	1,952	1,723	28%	17,919	22%
	Healthcare Provider	852	892	895	823	814	771	811	775	837	799	846	873	837	13%	10,825	13%
	Law Enforcement	953	1,052	1,030	1,056	1,152	1,048	1,093	1,013	1,049	989	936	992	881	14%	13,244	16%
	Government Agency	394	448	410	419	439	407	509	445	446	399	384	453	432	7%	5,585	7%
	Parent	504	503	566	597	546	521	591	555	517	507	569	544	476	8%	6,996	9%
	Relative/Friend/Neighbor	454	424	473	553	540	472	544	594	506	431	443	444	379	6%	6,257	8%
	Anonymous	612	676	662	777	697	560	611	710	642	605	666	654	645	10%	8,517	10%
	CP&P	133	155	104	133	120	112	132	125	123	117	99	122	105	2%	1,580	2%
	Court/Legal	132	154	137	141	124	143	130	135	124	98	142	126	152	2%	1,738	2%
	Community Group/Individual	274	262	269	236	238	262	286	272	257	260	251	280	229	4%	3,376	4%
	Facility Staff (incl Correctional Facility)	80	76	88	64	68	70	94	95	97	85	85	98	76	1%	1,076	1%
	Child (Self)	37	36	46	37	38	46	50	37	41	41	41	34	34	1%	518	1%
	Other	253	286	257	252	285	274	297	287	266	252	255	232	240	4%	3,436	4%
	Daycare/Babysitter	18	15	24	18	20	21	13	20	13	18	11	15	11	0%	217	0%
	Total		6,596	6,669	6,607	6,871	6,063	4,850	5,248	6,213	6,557	6,229	6,342	6,819	6,220		81,284

Table 4: Monthly Count of CPS Reports and CWS Referrals Assigned to Counties

County														Average Number of Assignments Last 13 Months	Jan 17 to Feb 17 Numerical Difference
	Feb 2016	Mar 2016	April 2016	May 2016	Jun 2016	Jul 2016	Aug 2016	Sep 2016	Oct 2016	Nov 2016	Dec 2016	Jan 2017	Feb 2017		
Atlantic	284	265	250	291	221	184	234	252	285	243	239	241	221	247	-22
Bergen	392	369	321	385	354	251	264	340	370	352	384	423	375	352	23
Burlington	315	309	321	321	260	238	262	309	293	325	259	333	289	295	-36
Camden	551	527	573	608	532	391	465	534	537	536	557	539	520	528	-16
Cape May	65	79	94	82	67	71	78	73	78	68	63	68	81	74	13
Cumberland	179	206	219	245	202	184	183	209	201	230	229	277	213	214	-17
Essex	701	752	743	717	644	534	573	626	713	659	709	722	627	671	-32
Gloucester	252	285	267	233	234	212	223	244	266	224	282	272	291	253	67
Hudson	450	412	403	481	400	304	279	403	450	389	433	449	413	405	24
Hunterdon	58	46	62	38	42	36	38	44	36	46	54	46	49	46	3
Mercer	263	276	278	282	255	227	234	272	230	280	224	288	236	257	-44
Middlesex	439	479	492	470	387	325	331	426	449	379	441	468	476	428	97
Monmouth	413	361	373	366	353	272	327	347	382	332	348	391	374	357	42
Morris	228	217	222	247	228	146	153	225	245	214	227	218	219	215	5
Ocean	378	366	365	415	354	316	344	353	408	364	384	416	378	372	14
Passaic	504	510	455	456	401	299	331	397	471	439	431	518	413	433	-26
Salem	67	94	89	82	80	63	67	89	78	66	60	93	73	77	7
Somerset	160	165	152	169	160	139	112	149	158	184	164	147	146	154	-38
Sussex	113	105	94	88	91	90	87	101	80	96	104	101	84	95	-12
Union	331	350	336	373	295	255	244	323	316	312	306	341	303	314	-9
Warren	87	77	99	106	88	62	78	97	97	84	79	108	96	89	12
County Subtotals	6,230	6,250	6,208	6,455	5,648	4,599	4,907	5,813	6,143	5,822	5,977	6,459	5,877	5,876	55
Central Region IAIU	53	46	59	55	53	33	54	52	63	57	59	41	58	53	1
Metro Region IAIU	60	64	60	68	61	36	32	46	65	48	45	61	54	54	6
Northern Region IAIU	58	66	71	70	66	27	45	62	76	70	52	65	58	60	-12
Southern Region IAIU	64	76	90	73	92	44	72	66	68	89	79	76	71	74	-18
IAIU Subtotals	235	252	280	266	272	140	203	226	272	264	235	243	241	241	-23
Unable to Determine¹	126	165	115	149	140	110	137	168	140	143	129	113	100	133	-43
Other Offices	5	2	4	1	3	1	1	6	2	0	1	4	2	2	2
Grand Total	6,596	6,669	6,607	6,871	6,063	4,850	5,248	6,213	6,557	6,229	6,342	6,819	6,220	6,253	-9

¹CPS Reports or CWS Referrals not assigned to an office through the Assignment Designee, but were assigned to an office for an assessment or investigation.



Table 5: Monthly Count of CPS Reports and CWS Referrals Assigned to CP&P Local Offices

County	Local Office	Type of Referral	Month														Total
			Feb 2016	Mar 2016	Apr 2016	May 2016	Jun 2016	Jul 2016	Aug 2016	Sep 2016	Oct 2016	Nov 2016	Dec 2016	Jan 2017	Feb 2017		
ATLANTIC	Atlantic East	CPS	133	144	97	129	108	90	102	109	127	116	118	107	102	1,482	
		CWS	34	27	35	41	34	25	44	38	34	42	33	27	21	435	
		Total	167	171	132	170	142	115	146	147	161	158	151	134	123	1,917	
	Atlantic West	CPS	88	71	95	94	66	51	72	82	101	60	75	73	69	997	
		CWS	29	23	23	27	13	18	16	23	23	25	13	34	29	296	
		Total	117	94	118	121	79	69	88	105	124	85	88	107	98	1,293	
	County Totals	CPS	221	215	192	223	174	141	174	191	228	176	193	180	171	2,479	
		CWS	63	50	58	68	47	43	60	61	57	67	46	61	50	731	
		Total	284	265	250	291	221	184	234	252	285	243	239	241	221	3,210	
BERGEN	Bergen Central	CPS	107	121	101	134	121	63	73	90	104	104	125	127	118	1,388	
		CWS	51	48	32	40	39	37	29	28	34	40	44	52	42	516	
		Total	158	169	133	174	160	100	102	118	138	144	169	179	160	1,904	
	Bergen South	CPS	174	150	136	162	143	109	115	157	160	161	153	174	152	1,946	
		CWS	60	50	52	49	51	42	47	65	72	47	62	70	63	730	
		Total	234	200	188	211	194	151	162	222	232	208	215	244	215	2,676	
	County Totals	CPS	281	271	237	296	264	172	188	247	264	265	278	301	270	3,334	
		CWS	111	98	84	89	90	79	76	93	106	87	106	122	105	1,246	
		Total	392	369	321	385	354	251	264	340	370	352	384	423	375	4,580	
BURLINGTON	Burlington East	CPS	127	105	131	128	84	94	94	92	105	126	104	118	98	1,406	
		CWS	39	38	32	39	34	34	33	49	41	33	30	45	40	487	
		Total	166	143	163	167	118	128	127	141	146	159	134	163	138	1,893	
	Burlington West	CPS	109	124	130	117	109	87	101	121	106	118	92	125	111	1,450	
		CWS	40	42	28	37	33	23	34	47	41	48	33	45	40	491	
		Total	149	166	158	154	142	110	135	168	147	166	125	170	151	1,941	
	County Totals	CPS	236	229	261	245	193	181	195	213	211	244	196	243	209	2,856	
		CWS	79	80	60	76	67	57	67	96	82	81	63	90	80	978	
		Total	315	309	321	321	260	238	262	309	293	325	259	333	289	3,834	
CAMDEN	Camden Central	CPS	119	104	136	123	122	92	97	115	146	121	114	106	113	1,508	
		CWS	34	44	36	38	53	36	41	40	26	39	37	38	34	496	
		Total	153	148	172	161	175	128	138	155	172	160	151	144	147	2,004	
	Camden East	CPS	106	104	114	123	94	86	102	104	107	98	114	126	88	1,366	
		CWS	27	16	27	33	28	31	21	34	32	34	43	43	30	399	
		Total	133	120	141	156	122	117	123	138	139	132	157	169	118	1,765	
	Camden North	CPS	105	102	132	115	95	56	79	97	101	95	102	102	107	1,288	
		CWS	45	46	27	47	34	18	39	42	28	34	36	32	32	460	
		Total	150	148	159	162	129	74	118	139	129	129	138	134	139	1,748	
	Camden South	CPS	86	77	79	97	80	56	67	86	67	89	78	73	89	1,024	
		CWS	29	34	22	32	26	16	19	16	30	26	33	19	27	329	
		Total	115	111	101	129	106	72	86	102	97	115	111	92	116	1,353	
	County Totals	CPS	416	387	461	458	391	290	345	402	421	403	408	407	397	5,186	
		CWS	135	140	112	150	141	101	120	132	116	133	149	132	123	1,684	
		Total	551	527	573	608	532	391	465	534	537	536	557	539	520	6,870	
CAPE MAY	Cape May	CPS	51	57	72	68	51	51	65	62	62	48	53	52	65	757	
		CWS	14	22	22	14	16	20	13	11	16	20	10	16	16	210	
		Total	65	79	94	82	67	71	78	73	78	68	63	68	81	967	
	County Totals	CPS	51	57	72	68	51	51	65	62	62	48	53	52	65	757	
		CWS	14	22	22	14	16	20	13	11	16	20	10	16	16	210	
		Total	65	79	94	82	67	71	78	73	78	68	63	68	81	967	
CUMBERLAND	Cumberland East	CPS	52	48	64	81	61	46	40	48	40	58	70	70	59	737	
		CWS	13	16	18	14	16	18	20	17	16	18	10	26	26	228	
		Total	65	64	82	95	77	64	60	65	56	76	80	96	85	965	
	Cumberland West	CPS	96	116	102	115	101	96	102	113	109	126	111	143	93	1,423	
		CWS	18	26	35	35	24	24	21	31	36	28	38	38	35	389	
		Total	114	142	137	150	125	120	123	144	145	154	149	181	128	1,812	
	County Totals	CPS	148	164	166	196	162	142	142	161	149	184	181	213	152	2,160	
		CWS	31	42	53	49	40	42	41	48	52	46	48	64	61	617	
		Total	179	206	219	245	202	184	183	209	201	230	229	277	213	2,777	

Data in this report is preliminary and may differ from any final report. This report is produced to ensure continuous quality improvement throughout DCF.



Table 5: Monthly Count of CPS Reports and CWS Referrals Assigned to CP&P Local Offices

County	Local Office	Type of Referral	Month												Total	
			Feb 2016	Mar 2016	Apr 2016	May 2016	Jun 2016	Jul 2016	Aug 2016	Sep 2016	Oct 2016	Nov 2016	Dec 2016	Jan 2017		Feb 2017
ESSEX	Essex Central	CPS	85	108	101	108	112	75	77	91	105	94	108	111	81	1,256
		CWS	37	42	38	41	23	27	27	24	39	43	40	31	33	445
		Total	122	150	139	149	135	102	104	115	144	137	148	142	114	1,701
	Essex North	CPS	73	75	48	59	54	58	57	59	61	77	83	68	49	821
		CWS	25	35	21	19	24	29	14	27	26	27	25	27	24	323
		Total	98	110	69	78	78	87	71	86	87	104	108	95	73	1,144
	Essex South	CPS	79	66	56	60	62	47	46	55	67	58	55	71	69	791
		CWS	22	26	26	24	34	19	21	25	26	25	20	24	16	308
		Total	101	92	82	84	96	66	67	80	93	83	75	95	85	1099
	Newark Center City	CPS	95	87	110	97	95	64	69	86	91	79	95	95	81	1144
		CWS	30	42	45	34	25	24	25	28	33	36	40	22	25	409
		Total	125	129	155	131	120	88	94	114	124	115	135	117	106	1553
	Newark Northeast	CPS	89	99	115	93	72	56	94	90	86	64	74	95	89	1116
		CWS	30	36	27	47	24	22	29	28	44	23	34	38	25	407
		Total	119	135	142	140	96	78	123	118	130	87	108	133	114	1523
Newark South	CPS	96	104	121	87	80	80	84	79	95	94	109	102	101	1232	
	CWS	40	32	35	48	39	33	30	34	40	39	26	38	34	468	
	Total	136	136	156	135	119	113	114	113	135	133	135	140	135	1700	
County Totals	CPS	517	539	551	504	475	380	427	460	505	466	524	542	470	6360	
	CWS	184	213	192	213	169	154	146	166	208	193	185	180	157	2360	
	Total	701	752	743	717	644	534	573	626	713	659	709	722	627	8720	
GLOUCESTER	Gloucester East	CPS	93	112	99	84	89	75	84	84	93	94	101	96	112	1216
		CWS	24	38	31	26	26	28	26	23	30	24	26	28	28	358
		Total	117	150	130	110	115	103	110	107	123	118	127	124	140	1574
	Gloucester West	CPS	102	106	115	87	85	90	79	110	123	84	131	106	119	1337
		CWS	33	29	22	36	34	19	34	27	20	22	24	42	32	374
		Total	135	135	137	123	119	109	113	137	143	106	155	148	151	1711
	County Totals	CPS	195	218	214	171	174	165	163	194	216	178	232	202	231	2553
CWS		57	67	53	62	60	47	60	50	50	46	50	70	60	732	
Total		252	285	267	233	234	212	223	244	266	224	282	272	291	3285	
HUDSON	Hudson Central	CPS	89	74	67	83	52	61	56	72	82	65	80	80	69	930
		CWS	28	25	31	23	34	21	10	32	33	22	36	39	34	368
		Total	117	99	98	106	86	82	66	104	115	87	116	119	103	1298
	Hudson North	CPS	77	96	88	101	77	62	52	81	99	79	72	85	78	1047
		CWS	35	34	27	31	30	23	18	30	29	29	30	30	36	382
		Total	112	130	115	132	107	85	70	111	128	108	102	115	114	1429
	Hudson South	CPS	81	60	68	86	71	52	56	71	68	81	71	86	91	942
		CWS	25	23	21	45	30	28	30	24	34	41	36	36	30	403
		Total	106	83	89	131	101	80	86	95	102	122	107	122	121	1345
	Hudson West	CPS	90	71	79	87	84	49	41	67	78	52	84	63	53	898
		CWS	25	29	22	25	22	8	16	26	27	20	24	30	22	296
		Total	115	100	101	112	106	57	57	93	105	72	108	93	75	1194
County Totals	CPS	337	301	302	357	284	224	205	291	327	277	307	314	291	3817	
	CWS	113	111	101	124	116	80	74	112	123	112	126	135	122	1449	
	Total	450	412	403	481	400	304	279	403	450	389	433	449	413	5266	
HUNTERDON	Hunterdon	CPS	41	33	49	29	33	28	25	33	25	28	41	32	36	433
		CWS	17	13	13	9	9	8	13	11	11	18	13	14	13	162
		Total	58	46	62	38	42	36	38	44	36	46	54	46	49	595
	County Totals	CPS	41	33	49	29	33	28	25	33	25	28	41	32	36	433
	CWS	17	13	13	9	9	8	13	11	11	18	13	14	13	162	
	Total	58	46	62	38	42	36	38	44	36	46	54	46	49	595	
MERCER	Mercer North	CPS	98	100	95	93	103	92	89	105	91	122	77	107	91	1263
		CWS	29	33	23	27	32	21	27	48	24	27	25	37	31	384
		Total	127	133	118	120	135	113	116	153	115	149	102	144	122	1647
	Mercer South	CPS	108	102	121	124	91	81	91	74	83	98	87	109	89	1258
		CWS	28	41	39	38	29	33	27	45	32	33	35	35	25	440
		Total	136	143	160	162	120	114	118	119	115	131	122	144	114	1698
County Totals	CPS	206	202	216	217	194	173	180	179	174	220	164	216	180	2521	
	CWS	57	74	62	65	61	54	54	93	56	60	60	72	56	824	
	Total	263	276	278	282	255	227	234	272	230	280	224	288	236	3345	

Data in this report is preliminary and may differ from any final report. This report is produced to ensure continuous quality improvement throughout DCF.



Table 5: Monthly Count of CPS Reports and CWS Referrals Assigned to CP&P Local Offices

County	Local Office	Type of Referral	Feb 2016	Mar 2016	Apr 2016	May 2016	Jun 2016	Jul 2016	Aug 2016	Sep 2016	Oct 2016	Nov 2016	Dec 2016	Jan 2017	Feb 2017	Total	
MIDDLESEX	Middlesex Central	CPS	78	77	72	97	80	57	56	103	93	73	70	91	78	1025	
		CWS	23	25	32	31	26	19	16	15	24	14	25	27	24	301	
		Total	101	102	104	128	106	76	72	118	117	87	95	118	102	1326	
	Middlesex Coastal	CPS	129	152	141	136	101	107	89	111	128	106	131	121	150	1602	
		CWS	46	39	39	29	35	26	36	35	40	33	39	46	42	485	
		Total	175	191	180	165	136	133	125	146	168	139	170	167	192	2087	
	Middlesex West	CPS	131	133	151	135	117	90	95	123	130	114	134	154	149	1656	
		CWS	32	53	57	42	28	26	39	39	34	39	42	29	33	493	
		Total	163	186	208	177	145	116	134	162	164	153	176	183	182	2149	
	County Totals	CPS	338	362	364	368	298	254	240	337	351	293	335	366	377	4283	
		CWS	101	117	128	102	89	71	91	89	98	86	106	102	99	1279	
		Total	439	479	492	470	387	325	331	426	449	379	441	468	476	5562	
MONMOUTH	Monmouth North	CPS	184	145	150	165	154	105	128	137	156	142	134	160	159	1919	
		CWS	44	38	47	40	36	29	49	43	56	42	29	49	41	543	
		Total	228	183	197	205	190	134	177	180	212	184	163	209	200	2462	
	Monmouth South	CPS	130	137	124	121	127	102	118	134	127	112	147	130	120	1629	
		CWS	55	41	52	40	36	36	32	33	43	36	38	52	54	548	
		Total	185	178	176	161	163	138	150	167	170	148	185	182	174	2177	
	County Totals	CPS	314	282	274	286	281	207	246	271	283	254	281	290	279	3548	
		CWS	99	79	99	80	72	65	81	76	99	78	67	101	95	1091	
		Total	413	361	373	366	353	272	327	347	382	332	348	391	374	4639	
	MORRIS	Morris East	CPS	77	81	63	74	75	48	37	73	88	79	72	72	68	907
			CWS	34	27	23	35	22	22	11	22	29	31	24	27	23	330
			Total	111	108	86	109	97	70	48	95	117	110	96	99	91	1237
Morris West		CPS	83	73	98	102	86	56	77	90	92	74	87	78	97	1093	
		CWS	34	36	38	36	45	20	28	40	36	30	44	41	31	459	
		Total	117	109	136	138	131	76	105	130	128	104	131	119	128	1552	
County Totals		CPS	160	154	161	176	161	104	114	163	180	153	159	150	165	2000	
		CWS	68	63	61	71	67	42	39	62	65	61	68	68	54	789	
		Total	228	217	222	247	228	146	153	225	245	214	227	218	219	2789	
OCEAN		Ocean North	CPS	146	150	157	180	152	142	142	130	165	151	154	163	136	1968
			CWS	50	43	42	46	44	29	39	43	49	41	51	47	40	564
			Total	196	193	199	226	196	171	181	173	214	192	205	210	176	2532
	Ocean South	CPS	137	130	127	145	120	115	117	138	138	133	131	159	163	1753	
		CWS	45	43	39	44	38	30	46	42	56	39	48	47	39	556	
		Total	182	173	166	189	158	145	163	180	194	172	179	206	202	2309	
	County Totals	CPS	283	280	284	325	272	257	259	268	303	284	285	322	299	3721	
		CWS	95	86	81	90	82	59	85	85	105	80	99	94	79	1120	
		Total	378	366	365	415	354	316	344	353	408	364	384	416	378	4841	
	PASSAIC	Passaic Central	CPS	202	169	166	175	183	122	121	152	171	176	152	184	175	2148
			CWS	89	89	66	82	55	41	42	53	71	82	68	85	73	896
			Total	291	258	232	257	238	163	163	205	242	258	220	269	248	3044
Passaic North		CPS	159	170	162	151	120	96	121	129	150	129	146	178	120	1831	
		CWS	54	82	61	48	43	40	47	63	79	52	65	71	45	750	
		Total	213	252	223	199	163	136	168	192	229	181	211	249	165	2581	
County Totals		CPS	361	339	328	326	303	218	242	281	321	305	298	362	295	3979	
		CWS	143	171	127	130	98	81	89	116	150	134	133	156	118	1646	
		Total	504	510	455	456	401	299	331	397	471	439	431	518	413	5625	
SALEM		Salem	CPS	43	78	61	64	57	52	48	63	59	51	45	80	57	758
			CWS	24	16	28	18	23	11	19	26	19	15	15	13	16	243
			Total	67	94	89	82	80	63	67	89	78	66	60	93	73	1001
	County Totals	CPS	43	78	61	64	57	52	48	63	59	51	45	80	57	758	
		CWS	24	16	28	18	23	11	19	26	19	15	15	13	16	243	
		Total	67	94	89	82	80	63	67	89	78	66	60	93	73	1001	
SOMERSET	Somerset	CPS	120	124	115	136	129	107	88	115	119	136	122	111	109	1531	
		CWS	40	41	37	33	31	32	24	34	39	48	42	36	37	474	
		Total	160	165	152	169	160	139	112	149	158	184	164	147	146	2005	
	County Totals	CPS	120	124	115	136	129	107	88	115	119	136	122	111	109	1531	
		CWS	40	41	37	33	31	32	24	34	39	48	42	36	37	474	
Total	160	165	152	169	160	139	112	149	158	184	164	147	146	2005			

Data in this report is preliminary and may differ from any final report. This report is produced to ensure continuous quality improvement throughout DCF.



Table 5: Monthly Count of CPS Reports and CWS Referrals Assigned to CP&P Local Offices

County	Local Office	Type of Referral	Month												Total	
			Feb 2016	Mar 2016	Apr 2016	May 2016	Jun 2016	Jul 2016	Aug 2016	Sep 2016	Oct 2016	Nov 2016	Dec 2016	Jan 2017		Feb 2017
SUSSEX	Sussex	CPS	83	76	77	71	68	74	69	79	55	70	71	71	68	932
		CWS	30	29	17	17	23	16	18	22	25	26	33	30	16	302
		Total	113	105	94	88	91	90	87	101	80	96	104	101	84	1234
	County Totals	CPS	83	76	77	71	68	74	69	79	55	70	71	71	68	932
		CWS	30	29	17	17	23	16	18	22	25	26	33	30	16	302
		Total	113	105	94	88	91	90	87	101	80	96	104	101	84	1234
UNION	Union Central	CPS	85	78	89	105	67	60	55	78	84	82	83	86	75	1027
		CWS	29	30	24	23	29	24	27	26	22	28	25	38	20	345
		Total	114	108	113	128	96	84	82	104	106	110	108	124	95	1372
	Union East	CPS	78	99	99	100	79	67	66	74	77	78	73	98	82	1070
		CWS	30	25	28	25	28	26	23	28	35	33	31	29	25	366
		Total	108	124	127	125	107	93	89	102	112	111	104	127	107	1436
	Union West	CPS	79	84	73	87	60	57	49	90	78	65	62	68	67	919
		CWS	30	34	23	33	32	21	24	27	20	26	32	22	34	358
		Total	109	118	96	120	92	78	73	117	98	91	94	90	101	1277
	County Totals	CPS	242	261	261	292	206	184	170	242	239	225	218	252	224	3016
		CWS	89	89	75	81	89	71	74	81	77	87	88	89	79	1069
		Total	331	350	336	373	295	255	244	323	316	312	306	341	303	4085
WARREN	Warren	CPS	64	60	68	74	67	49	68	76	79	68	57	88	68	886
		CWS	23	17	31	32	21	13	10	21	18	16	22	20	28	272
		Total	87	77	99	106	88	62	78	97	97	84	79	108	96	1158
	County Totals	CPS	64	60	68	74	67	49	68	76	79	68	57	88	68	886
		CWS	23	17	31	32	21	13	10	21	18	16	22	20	28	272
		Total	87	77	99	106	88	62	78	97	97	84	79	108	96	1158
County CPS Referral Total		CPS	4,657	4,632	4,714	4,882	4,237	3,453	3,653	4,328	4,571	4,328	4,448	4,794	4,413	57,110
County CWS Referral Total		CWS	1,573	1,618	1,494	1,573	1,411	1,146	1,254	1,485	1,572	1,494	1,529	1,665	1,464	19,278
County Referral Total		Total	6,230	6,250	6,208	6,455	5,648	4,599	4,907	5,813	6,143	5,822	5,977	6,459	5,877	76,388
Central Region IAIU	CPS	53	46	59	55	53	33	54	52	63	57	59	41	58	683	
	CWS	0	0	0	0	0	0	0	0	0	0	0	0	0	0	
	Total	53	46	59	55	53	33	54	52	63	57	59	41	58	683	
Metro Region IAIU	CPS	60	64	60	68	61	36	32	46	65	48	45	61	54	700	
	CWS	0	0	0	0	0	0	0	0	0	0	0	0	0	0	
	Total	60	64	60	68	61	36	32	46	65	48	45	61	54	700	
Northern Region IAIU	CPS	58	66	71	70	66	27	45	62	76	70	52	65	58	786	
	CWS	0	0	0	0	0	0	0	0	0	0	0	0	0	0	
	Total	58	66	71	70	66	27	45	62	76	70	52	65	58	786	
Southern Region IAIU	CPS	64	76	90	73	92	44	72	66	68	88	79	76	71	959	
	CWS	0	0	0	0	0	0	0	0	0	1	0	0	0	1	
	Total	64	76	90	73	92	44	72	66	68	89	79	76	71	960	
IAIU CPS Subtotal		CPS	235	252	280	266	272	140	203	226	272	263	235	243	3,128	
IAIU CWS Subtotal		CWS	0	0	0	0	0	0	0	0	1	0	0	0	1	
IAIU Subtotal		Total	235	252	280	266	272	140	203	226	272	264	235	243	3,129	
County and IAIU CPS Subtotal		CPS	4,892	4,884	4,994	5,148	4,509	3,593	3,856	4,554	4,843	4,591	4,683	5,037	4,654	60,238
County and IAIU CWS Subtotal		CWS	1,573	1,618	1,494	1,573	1,411	1,146	1,254	1,485	1,572	1,495	1,529	1,665	1,464	19,279
Unable to Determine⁽¹⁾		Total	126	165	115	149	140	110	137	168	140	143	129	113	1,735	
Other Offices		Total	5	2	4	1	3	1	1	6	2	0	1	4	32	
Grand Total		Total	6,596	6,669	6,607	6,871	6,063	4,850	5,248	6,213	6,557	6,229	6,342	6,819	6,220	81,284

⁽¹⁾CPS Reports or CWS Referrals not assigned to an office through the Assignment Designee, but were assigned to an office for an assessment or investigation.