



Child Protection and Permanency

Monthly Screening and Investigation Report March 2016

Allison Blake, Ph.D., L.S.W.
Commissioner

April 14, 2016



Table of Contents

Table 1: NJ State Central Registry Activity: Monthly Child Abuse and Neglect Hotline Calls, Intakes and Assignments to Child Protection & Permanency (CP&P) Offices

Chart 1: CP&P Annual Trends in Child Protection Services (CPS) Reports and Child Welfare Services (CWS) Referrals

Table 2: Assignments to CP&P Offices: CPS Reports and CWS Referrals

Table 3: Source of CPS Reports and CWS Referrals

Table 4: Monthly Count of CPS Reports and CWS Referrals Assigned to Counties

Table 5: Monthly Count of CPS Reports and CWS Referrals Assigned to CP&P Local Offices

Table 1: NJ State Central Registry Activity: Monthly Child Abuse and Neglect Hotline Calls, Intakes and Assignments to CP&P Offices^{1,2,7}

2015 - 2016	Hotline Call Activity				Intakes Recorded in NJ SPIRIT ^{6,8}												Assignments to CP&P Offices				
	Total Calls to SCR ³	Abandon Calls ⁴	Average Time to Answer (seconds)	Resulting NJS Intakes ⁵	CPS Reports		CWS Referrals		No Action Required (NAR)		Related Information (RI)		Information & Referral (I&R)		Information Only (IO)		CPS Reports		CWS Referrals		Total
					n	%	n	%	n	%	n	%	n	%	n	%	n	%	n	%	
March 2015	14,805	486	30	16,174	5,187	32.1%	1,580	9.8%	363	2.2%	4,021	24.9%	1,811	11.2%	3,212	19.9%	5,187	76.7%	1,580	23.3%	6,767
April 2015	13,698	409	26	15,107	4,967	32.9%	1,381	9.1%	366	2.4%	3,900	25.8%	1,615	10.7%	2,878	19.1%	4,967	78.2%	1,384	21.8%	6,351
May 2015	15,466	583	39	16,769	5,457	32.5%	1,560	9.3%	340	2.0%	4,437	26.5%	1,874	11.2%	3,101	18.5%	5,457	77.8%	1,561	22.2%	7,018
June 2015	13,760	405	29	15,189	4,887	32.2%	1,436	9.5%	373	2.5%	3,981	26.2%	1,659	10.9%	2,853	18.8%	4,887	77.3%	1,436	22.7%	6,323
July 2015	12,132	380	20	13,624	4,140	30.4%	1,273	9.3%	442	3.2%	3,569	26.2%	1,416	10.4%	2,784	20.4%	4,140	76.5%	1,273	23.5%	5,413
August 2015	12,553	652	24	13,691	3,978	29.1%	1,257	9.2%	401	2.9%	3,713	27.1%	1,384	10.1%	2,958	21.6%	3,978	76.0%	1,256	24.0%	5,234
September 2015	13,335	351	24	14,955	4,776	31.9%	1,494	10.0%	467	3.1%	3,908	26.1%	1,601	10.7%	2,709	18.1%	4,776	76.2%	1,495	23.8%	6,271
October 2015	14,304	315	18	15,821	5,139	32.5%	1,620	10.2%	332	2.1%	4,073	25.7%	1,834	11.6%	2,823	17.8%	5,139	76.0%	1,619	24.0%	6,758
November 2015	13,321	445	20	14,527	4,417	30.4%	1,475	10.2%	347	2.4%	3,942	27.1%	1,513	10.4%	2,833	19.5%	4,417	74.9%	1,477	25.1%	5,894
December 2015	13,186	603	28	14,236	4,530	31.8%	1,544	10.8%	370	2.6%	3,709	26.1%	1,567	11.0%	2,516	17.7%	4,530	74.6%	1,544	25.4%	6,074
January 2016	13,499	551	40	14,655	4,686	32.0%	1,573	10.7%	282	1.9%	4,020	27.4%	1,482	10.1%	2,612	17.8%	4,686	74.9%	1,571	25.1%	6,257
February 2016	13,927	590	40	15,143	4,974	32.8%	1,620	10.7%	419	2.8%	3,836	25.3%	1,627	10.7%	2,667	17.6%	4,974	75.4%	1,622	24.6%	6,596
March 2016	14,064	446	32	15,619	5,000	32.0%	1,671	10.7%	428	2.7%	3,912	25.0%	1,812	11.6%	2,796	17.9%	5,000	75.0%	1,669	25.0%	6,669
Monthly Average	13,696	478	28	15,039	4,780	31.8%	1,499	10.0%	379	2.5%	3,925	26.1%	1,630	10.8%	2,826	18.8%	4,780	76.1%	1,499	23.9%	6,279
Overall Total	178,050	6,216		195,510	62,138		19,484		4,930		51,021		21,195		36,742		62,138	76.1%	19,487	23.9%	81,625

¹ Comes from three distinct sources: (1) the Automatic Call Distribution (ACD) phone system; which keeps a count of the number of calls and call routing; (2) Monthly NJSpirit Intakes; which record decision making on calls received by hotline screeners, and (3) NJSpirit extracts of assigned CWS Referrals and CPS Reports.

² The number of Intakes, CPS Reports, and CWS Referrals are based on an extract from NJSpirit. Data extracted by the Office of Research, Evaluation, and Reporting on **April 12, 2016** includes all Intakes, CPS Reports, and CWS Referrals received from **March 1, 2016 through March 31, 2016**.

³ The number calls received through the ACD System that were directed to a screener from any call-in phone number.

⁴ The number of calls received through the ACD System that are abandoned either while waiting in queue or while ringing.

⁵ The number of Intakes entered in NJSpirit from the number of calls received.

⁶ The number of Intakes recorded in NJSpirit, by type of Intake. There is not a one-to-one relationship between an ACD call and an Intake; multiple calls to State Central Registry (SCR) may result in a single Intake, or one call may result in multiple Intakes.

⁷ Intake: The process of documenting: a report of alleged abuse or neglect of a child (CPS); a request for services on behalf of a child, or a referral of a child for services (CWS); a call in which the caller provides additional or clarifying information about a current service case or active investigation (RI); informing a caller of, or referring a caller to, services available from other private or public sources (I&R); a call that requires no action by CP&P (NAR); or a response to a simple inquiry (IO).

⁸ NJ SPIRIT: NJ Statewide Protection Investigation and Reporting Information Tool case management system

CP&P Annual Trends in CPS Reports and CWS Referrals

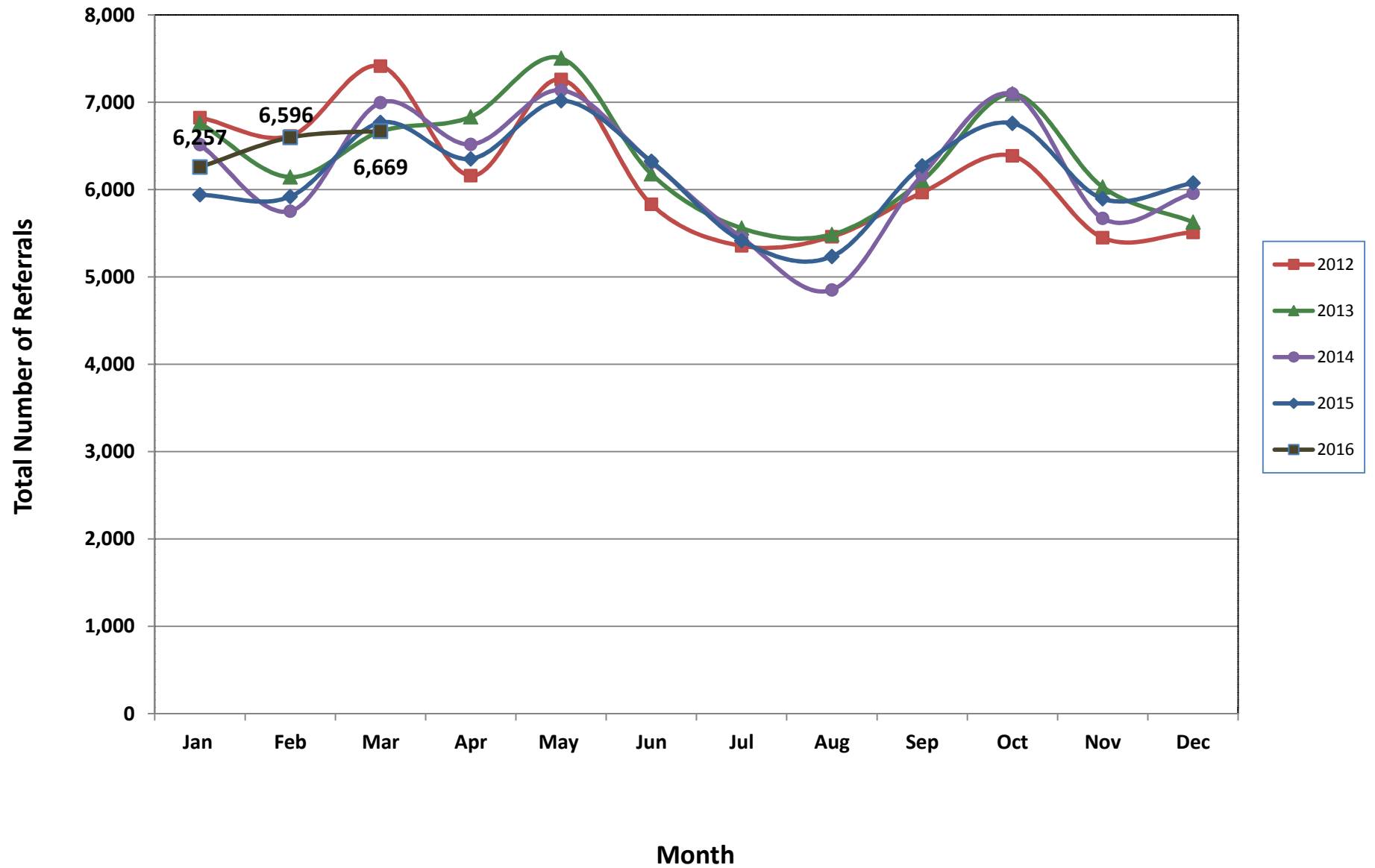


Table 2: Assignments to CP&P Offices: CPS Reports and CWS Referrals¹

Intake Date ³		CPS Reports ²	CWS Referrals ²	Total Assignments ²
2012	Jan 2012	5,530	1,294	6,824
	Feb 2012	5,358	1,255	6,613
	Mar 2012	5,985	1,428	7,413
	Apr 2012	4,899	1,259	6,158
	May 2012	5,874	1,385	7,259
	Jun 2012	4,640	1,190	5,830
	Jul 2012	4,254	1,101	5,355
	Aug 2012	4,325	1,135	5,460
	Sep 2012	4,769	1,196	5,965
	Oct 2012	5,178	1,207	6,385
	Nov 2012	4,310	1,138	5,448
	Dec 2012	4,394	1,116	5,510
	Total	59,516	14,704	74,220
2013	Jan 2013	5,464	1,296	6,760
	Feb 2013	4,966	1,177	6,143
	Mar 2013	5,355	1,309	6,664
	Apr 2013	5,430	1,402	6,832
	May 2013	5,993	1,510	7,503
	Jun 2013	4,947	1,230	6,177
	Jul 2013	4,330	1,228	5,558
	Aug 2013	4,330	1,155	5,485
	Sep 2013	4,851	1,251	6,102
	Oct 2013	5,614	1,481	7,095
	Nov 2013	4,694	1,334	6,028
	Dec 2013	4,397	1,229	5,626
	Total	60,371	15,602	75,973
2014	Jan 2014	5,097	1,416	6,513
	Feb 2014	4,457	1,295	5,752
	Mar 2014	5,408	1,586	6,994
	Apr 2014	5,049	1,467	6,516
	May 2014	5,501	1,635	7,136
	Jun 2014	4,796	1,517	6,313
	Jul 2014	4,202	1,247	5,449
	Aug 2014	3,629	1,222	4,851
	Sep 2014	4,668	1,498	6,166
	Oct 2014	5,509	1,586	7,095
	Nov 2014	4,254	1,416	5,670
	Dec 2014	4,509	1,447	5,956
	Total	57,079	17,332	74,411

Table 2: Assignments to CP&P Offices: CPS Reports and CWS Referrals¹

Intake Date ³		CPS Reports ²	CWS Referrals ²	Total Assignments ²
2015	Jan 2015	4,549	1,391	5,940
	Feb 2015	4,574	1,345	5,919
	Mar 2015	5,187	1,580	6,767
	Apr 2015	4,967	1,384	6,351
	May 2015	5,457	1,561	7,018
	Jun 2015	4,887	1,436	6,323
	Jul 2015	4,140	1,273	5,413
	Aug 2015	3,978	1,256	5,234
	Sep 2015	4,776	1,495	6,271
	Oct 2015	5,139	1,619	6,758
	Nov 2015	4,417	1,477	5,894
	Dec 2015	4,530	1,544	6,074
	Total	56,601	17,361	73,962
2016	Jan 2016	4,686	1,571	6,257
	Feb 2016	4,974	1,622	6,596
	March 2016	5,000	1,669	6,669
	Total	14,660	4,862	19,522
Grand Total		248,227	69,861	318,088

¹Source of Data: NJ SPIRIT

²A CPS Report or a CWS Referral may include multiple children in a family, with one or more allegation or request for services. In these cases, each CPS Report or CWS Referral is counted once - the CPS Report or the CWS Referral is the unit of analysis rather than the child.

³Prior to January 2014, the number of CPS Reports and CWS Referrals was based on the type of assignment of the CPS Report or CWS Referral. Beginning in January 2014, the number of CPS Reports and CWS Referrals is based on the number of CPS Reports and CWS Referrals received.

Table 3: Source of CPS Reports and CWS Referrals

CPS Reports and CWS Referrals	Source	Mar 2015	Apr 2015	May 2015	Jun 2015	Jul 2015	Aug 2015	Sep 2015	Oct 2015	Nov 2015	Dec 2015	Jan 2016	Feb 2016	March 2016	
	School Staff	1,894	1,487	1,868	1,166	183	75	1,123	1,763	1,454	1,596	1,569	1,900	1,690	25%
Healthcare Provider	825	861	812	808	816	832	780	825	766	780	830	852	892	13%	
Law Enforcement	933	925	1056	1093	1082	1,010	1,040	1,003	909	910	910	953	1,052	16%	
Government Agency	465	445	370	422	495	449	437	426	376	389	412	394	448	7%	
Parent	539	493	578	581	594	592	589	518	451	495	529	504	503	8%	
Relative/Friend/Neighbor	491	484	540	546	604	595	592	526	466	455	446	454	424	6%	
Anonymous	687	641	802	725	611	622	739	710	609	587	628	612	676	10%	
CP&P	110	117	103	125	119	110	123	137	121	112	113	133	155	2%	
Court/Legal	108	116	128	148	155	113	115	119	108	108	119	132	154	2%	
Community Group/Individual	260	295	266	232	280	297	243	306	240	255	294	274	262	4%	
Facility Staff (incl Correctional Facility)	71	106	76	89	92	105	78	83	83	81	91	80	76	1%	
Child (Self)	39	37	49	41	44	67	47	34	31	21	41	37	36	1%	
Other	328	332	353	330	327	344	348	288	265	274	259	253	286	4%	
Daycare/Babysitter	17	12	17	17	11	23	17	20	15	11	16	18	15	0%	
Total	6,767	6,351	7,018	6,323	5,413	5,234	6,271	6,758	5,894	6,074	6,257	6,596	6,669		

Table 4: Monthly Count of CPS Reports and CWS Referrals Assigned to Counties

County														Average # of Assignments the Last 13 Months	Feb 16 to Mar 16 Numerical Difference
	Mar 2015	Apr 2015	May 2015	Jun 2015	Jul 2015	Aug 2015	Sep 2015	Oct 2015	Nov 2015	Dec 2015	Jan 2016	Feb 2016	March 2016		
Atlantic	269	277	275	239	218	227	295	267	227	255	251	284	265	258	-19
Bergen	386	335	382	296	284	257	345	411	336	394	333	392	369	348	-23
Burlington	285	319	322	274	263	284	307	303	258	268	275	315	309	291	-6
Camden	534	506	551	552	449	438	516	609	461	498	558	551	527	519	-24
Cape May	93	85	80	69	78	86	92	112	75	89	83	65	79	84	14
Cumberland	253	217	249	217	173	152	231	215	177	174	195	179	206	203	27
Essex	769	699	779	642	583	565	635	675	660	625	685	701	752	675	51
Gloucester	276	288	244	259	258	255	247	300	245	261	251	252	285	263	33
Hudson	442	382	546	471	352	325	399	451	342	431	424	450	412	417	-38
Hunterdon	45	50	51	47	48	38	58	52	37	39	53	58	46	48	-12
Mercer	264	244	249	262	198	226	263	324	254	252	265	263	276	257	13
Middlesex	479	418	471	423	335	317	400	466	387	435	419	439	479	421	40
Monmouth	440	374	378	346	301	301	364	361	343	308	328	413	361	355	-52
Morris	224	208	246	233	186	175	250	239	216	215	238	228	217	221	-11
Ocean	398	402	418	388	376	369	376	383	401	336	403	378	366	384	-12
Passaic	443	389	534	412	317	345	422	461	422	449	421	504	510	433	6
Salem	71	96	105	81	68	53	102	72	89	81	94	67	94	83	27
Somerset	153	154	178	163	158	128	155	153	157	143	141	160	165	154	5
Sussex	109	104	97	112	103	84	89	104	103	95	95	113	105	101	-8
Union	360	307	299	305	228	215	276	304	257	318	299	331	350	296	19
Warren	92	101	117	102	89	94	101	107	81	78	93	87	77	94	-10
County Subtotals	6,385	5,955	6,571	5,893	5,065	4,934	5,923	6,369	5,528	5,744	5,904	6,230	6,250	5,904	20
Central Region IAIU	50	51	54	54	24	41	53	52	56	62	44	53	46	49	-7
Metro Region IAIU	67	54	70	66	56	30	36	50	48	46	43	60	64	53	4
Northern Region IAIU	73	70	80	65	61	43	45	66	58	44	58	58	66	61	8
Southern Region IAIU	68	78	97	88	63	59	60	83	72	61	79	64	76	73	12
IAIU Subtotals	258	253	301	273	204	173	194	251	234	213	224	235	252	236	17
Unable to Determine¹	118	141	144	153	142	124	153	136	131	114	128	126	165	137	39
Other Offices	6	2	2	4	2	3	1	2	1	3	1	5	2	3	-3
Grand Total	6,767	6,351	7,018	6,323	5,413	5,234	6,271	6,758	5,894	6,074	6,257	6,596	6,669	6,279	73

¹CPS Reports or CWS Referrals not assigned to an office through the Assignment Designee, but were assigned to an office for an assessment or investigation.
Data in this report is preliminary and may differ from any final report. This report is produced to ensure continuous quality improvement throughout DCF.



Table 5: Monthly Count of CPS Reports and CWS Referrals Assigned to CP&P Local Offices

County	Local Office	Type of Referral														Total
			Mar 2015	Apr 2015	May 2015	Jun 2015	Jul 2015	Aug 2015	Sep 2015	Oct 2015	Nov 2015	Dec 2015	Jan 2016	Feb 2016	Mar 2016	
ATLANTIC	Atlantic East	CPS	116	134	121	115	100	107	134	115	107	113	110	133	144	1,549
		CWS	32	32	38	24	30	26	35	30	32	36	43	34	27	419
		Total	148	166	159	139	130	133	169	145	139	149	153	167	171	1,968
	Atlantic West	CPS	101	86	96	81	72	77	94	101	70	82	70	88	71	1,089
		CWS	20	25	20	19	16	17	32	21	18	24	28	29	23	292
		Total	121	111	116	100	88	94	126	122	88	106	98	117	94	1,381
	County Totals	CPS	217	220	217	196	172	184	228	216	177	195	180	221	215	2,638
		CWS	52	57	58	43	46	43	67	51	50	60	71	63	50	711
		Total	269	277	275	239	218	227	295	267	227	255	251	284	265	3,349
BERGEN	Bergen Central	CPS	103	110	123	102	83	72	98	117	98	119	128	107	121	1,381
		CWS	37	36	34	32	29	29	36	50	37	41	39	51	48	499
		Total	140	146	157	134	112	101	134	167	135	160	167	158	169	1,880
	Bergen South	CPS	183	133	175	120	127	106	157	177	144	164	121	174	150	1,931
		CWS	63	56	50	42	45	50	54	67	57	70	45	60	50	709
		Total	246	189	225	162	172	156	211	244	201	234	166	234	200	2,640
	County Totals	CPS	286	243	298	222	210	178	255	294	242	283	249	281	271	3,312
		CWS	100	92	84	74	74	79	90	117	94	111	84	111	98	1,208
		Total	386	335	382	296	284	257	345	411	336	394	333	392	369	4,520
BURLINGTON	Burlington East	CPS	105	138	125	99	97	110	110	121	93	118	117	127	105	1,465
		CWS	29	28	37	26	38	36	36	31	28	20	32	39	38	418
		Total	134	166	162	125	135	146	146	152	121	138	149	166	143	1,883
	Burlington West	CPS	119	117	122	115	96	97	120	119	107	101	92	109	124	1,438
		CWS	32	36	38	34	32	41	41	32	30	29	34	40	42	461
		Total	151	153	160	149	128	138	161	151	137	130	126	149	166	1,899
	County Totals	CPS	224	255	247	214	193	207	230	240	200	219	209	236	229	2,903
		CWS	61	64	75	60	70	77	77	63	58	49	66	79	80	879
		Total	285	319	322	274	263	284	307	303	258	268	275	315	309	3,782
CAMDEN	Camden Central	CPS	127	115	122	121	105	93	116	148	101	104	127	119	104	1,502
		CWS	23	38	29	27	29	25	36	38	34	24	34	34	44	415
		Total	150	153	151	148	134	118	152	186	135	128	161	153	148	1,917
	Camden East	CPS	89	102	119	125	81	105	109	123	100	106	108	106	104	1,377
		CWS	30	31	30	30	30	28	21	21	32	27	28	27	16	351
		Total	119	133	149	155	111	133	130	144	132	133	136	133	120	1,728
	Camden North	CPS	106	89	101	116	82	77	95	120	83	108	104	105	102	1,288
		CWS	33	31	33	36	26	24	33	40	17	34	40	45	46	438
		Total	139	120	134	152	108	101	128	160	100	142	144	150	148	1,726
	Camden South	CPS	97	88	92	73	76	66	83	88	77	75	85	86	77	1,063
		CWS	29	12	25	24	20	20	23	31	17	20	32	29	34	316
		Total	126	100	117	97	96	86	106	119	94	95	117	115	111	1,379
	County Totals	CPS	419	394	434	435	344	341	403	479	361	393	424	416	387	5,230
		CWS	115	112	117	117	105	97	113	130	100	105	134	135	140	1,520
		Total	534	506	551	552	449	438	516	609	461	498	558	551	527	6,750
CAPE MAY	Cape May	CPS	78	63	66	57	63	69	72	87	51	64	61	51	57	839
		CWS	15	22	14	12	15	17	20	25	24	25	22	14	22	247
		Total	93	85	80	69	78	86	92	112	75	89	83	65	79	1,086
	County Totals	CPS	78	63	66	57	63	69	72	87	51	64	61	51	57	839
		CWS	15	22	14	12	15	17	20	25	24	25	22	14	22	247
		Total	93	85	80	69	78	86	92	112	75	89	83	65	79	1,086
CUMBERLAND	Cumberland East	CPS	63	50	70	66	33	36	61	42	39	46	59	52	48	665
		CWS	15	12	25	19	6	9	18	26	18	14	12	13	16	203
		Total	78	62	95	85	39	45	79	68	57	60	71	65	64	868
	Cumberland West	CPS	143	117	123	99	108	81	123	116	88	83	99	96	116	1,392
		CWS	32	38	31	33	26	26	29	31	32	31	25	18	26	378
		Total	175	155	154	132	134	107	152	147	120	114	124	114	142	1,770
	County Totals	CPS	206	167	193	165	141	117	184	158	127	129	158	148	164	2,057
		CWS	47	50	56	52	32	35	47	57	50	45	37	31	42	581
		Total	253	217	249	217	173	152	231	215	177	174	195	179	206	2,638

Data in this report is preliminary and may differ from any final report. This report is produced to ensure continuous quality improvement throughout DCF.



Table 5: Monthly Count of CPS Reports and CWS Referrals Assigned to CP&P Local Offices

County	Local Office	Type of Referral														Total
			Mar 2015	Apr 2015	May 2015	Jun 2015	Jul 2015	Aug 2015	Sep 2015	Oct 2015	Nov 2015	Dec 2015	Jan 2016	Feb 2016	Mar 2016	
ESSEX	Essex Central	CPS	92	105	118	81	76	85	80	105	87	72	82	85	108	1,176
		CWS	25	32	36	27	39	41	26	42	37	39	43	37	42	466
		Total	117	137	154	108	115	126	106	147	124	111	125	122	150	1,642
	Essex North	CPS	63	78	75	67	42	40	53	53	54	66	53	73	75	792
		CWS	26	20	20	23	18	17	22	23	21	30	29	25	35	309
		Total	89	98	95	90	60	57	75	76	75	96	82	98	110	1,101
	Essex South	CPS	95	75	71	51	49	49	66	57	58	56	63	79	66	835
		CWS	22	17	16	20	19	16	25	23	16	17	27	22	26	266
		Total	117	92	87	71	68	65	91	80	74	73	90	101	92	1,101
	Newark Center City	CPS	110	90	106	72	61	64	89	83	82	78	91	95	87	1,108
		CWS	33	15	40	27	23	29	29	35	36	39	26	30	42	404
		Total	143	105	146	99	84	93	118	118	118	117	117	125	129	1,512
	Newark Northeast	CPS	107	106	94	108	81	69	101	83	81	65	92	89	99	1,175
		CWS	45	27	34	28	31	26	25	37	34	33	39	30	36	425
		Total	152	133	128	136	112	95	126	120	115	98	131	119	135	1,600
	Newark South	CPS	120	97	127	102	113	94	88	100	106	92	107	96	104	1,346
		CWS	31	37	42	36	31	35	31	34	48	38	33	40	32	468
		Total	151	134	169	138	144	129	119	134	154	130	140	136	136	1,814
County Totals	CPS	587	551	591	481	422	401	477	481	468	429	488	517	539	6,432	
	CWS	182	148	188	161	161	164	158	194	192	196	197	184	213	2,338	
	Total	769	699	779	642	583	565	635	675	660	625	685	701	752	8,770	
GLOUCESTER	Gloucester East	CPS	110	114	88	85	85	98	98	109	91	101	97	93	112	1,281
		CWS	29	34	18	25	36	34	24	26	17	25	35	24	38	365
		Total	139	148	106	110	121	132	122	135	108	126	132	117	150	1,646
	Gloucester West	CPS	113	115	114	121	118	93	94	133	103	109	91	102	106	1,412
		CWS	24	25	24	28	19	30	31	32	34	26	28	33	29	363
		Total	137	140	138	149	137	123	125	165	137	135	119	135	135	1,775
	County Totals	CPS	223	229	202	206	203	191	192	242	194	210	188	195	218	2,693
		CWS	53	59	42	53	55	64	55	58	51	51	63	57	67	728
Total		276	288	244	259	258	255	247	300	245	261	251	252	285	3,421	
HUDSON	Hudson Central	CPS	90	89	112	88	71	60	62	72	59	79	75	89	74	1,020
		CWS	30	30	22	30	24	30	25	26	16	25	23	28	25	334
		Total	120	119	134	118	95	90	87	98	75	104	98	117	99	1,354
	Hudson North	CPS	73	65	107	96	60	54	91	86	74	87	95	77	96	1,061
		CWS	29	19	28	27	18	16	22	31	29	30	37	35	34	355
		Total	102	84	135	123	78	70	113	117	103	117	132	112	130	1,416
	Hudson South	CPS	87	70	103	93	79	71	66	93	61	93	60	81	60	1,017
		CWS	31	23	46	29	23	19	31	28	22	28	20	25	23	348
		Total	118	93	149	122	102	90	97	121	83	121	80	106	83	1,365
	Hudson West	CPS	77	71	103	77	57	55	77	82	60	74	87	90	71	981
		CWS	25	15	25	31	20	20	25	33	21	15	27	25	29	311
		Total	102	86	128	108	77	75	102	115	81	89	114	115	100	1,292
County Totals	CPS	327	295	425	354	267	240	296	333	254	333	317	337	301	4,079	
	CWS	115	87	121	117	85	85	103	118	88	98	107	113	111	1,348	
	Total	442	382	546	471	352	325	399	451	342	431	424	450	412	5,427	
HUNTERDON	Hunterdon	CPS	28	33	32	32	35	27	41	40	27	27	35	41	33	431
		CWS	17	17	19	15	13	11	17	12	10	12	18	17	13	191
		Total	45	50	51	47	48	38	58	52	37	39	53	58	46	622
	County Totals	CPS	28	33	32	32	35	27	41	40	27	27	35	41	33	431
		CWS	17	17	19	15	13	11	17	12	10	12	18	17	13	191
Total		45	50	51	47	48	38	58	52	37	39	53	58	46	622	
MERCER	Mercer North	CPS	82	98	94	92	70	82	87	115	79	89	91	98	100	1,177
		CWS	43	23	27	25	29	18	33	40	46	33	37	29	33	416
		Total	125	121	121	117	99	100	120	155	125	122	128	127	133	1,593
	Mercer South	CPS	110	94	96	103	76	107	107	125	98	100	102	108	102	1,328
		CWS	29	29	32	42	23	19	36	44	31	30	35	28	41	419
		Total	139	123	128	145	99	126	143	169	129	130	137	136	143	1,747
	County Totals	CPS	192	192	190	195	146	189	194	240	177	189	193	206	202	2,505
		CWS	72	52	59	67	52	37	69	84	77	63	72	57	74	835
Total		264	244	249	262	198	226	263	324	254	252	265	263	276	3,340	

Data in this report is preliminary and may differ from any final report. This report is produced to ensure continuous quality improvement throughout DCF.

Table 5: Monthly Count of CPS Reports and CWS Referrals Assigned to CP&P Local Offices

County	Local Office	Type of Referral														Total
			Mar 2015	Apr 2015	May 2015	Jun 2015	Jul 2015	Aug 2015	Sep 2015	Oct 2015	Nov 2015	Dec 2015	Jan 2016	Feb 2016	Mar 2016	
MIDDLESEX	Middlesex Central	CPS	83	85	89	65	52	56	86	86	66	91	70	78	77	984
		CWS	20	21	27	17	25	18	28	27	20	27	25	23	25	303
		Total	103	106	116	82	77	74	114	113	86	118	95	101	102	1,287
	Middlesex Coastal	CPS	154	122	151	128	101	105	110	132	110	119	104	129	152	1,617
		CWS	49	34	37	44	43	24	33	35	38	33	41	46	39	496
		Total	203	156	188	172	144	129	143	167	148	152	145	175	191	2,113
	Middlesex West	CPS	139	122	138	132	94	84	105	132	118	114	132	131	133	1,574
		CWS	34	34	29	37	20	30	38	54	35	51	47	32	53	494
		Total	173	156	167	169	114	114	143	186	153	165	179	163	186	2,068
	County Totals	CPS	376	329	378	325	247	245	301	350	294	324	306	338	362	4,175
CWS		103	89	93	98	88	72	99	116	93	111	113	101	117	1,293	
Total		479	418	471	423	335	317	400	466	387	435	419	439	479	5,468	
MONMOUTH	Monmouth North	CPS	181	156	164	152	129	119	159	160	134	135	135	184	145	1,953
		CWS	47	40	43	39	37	33	58	51	50	47	35	44	38	562
		Total	228	196	207	191	166	152	217	211	184	182	170	228	183	2,515
	Monmouth South	CPS	171	146	128	125	108	111	118	118	118	95	115	130	137	1,620
		CWS	41	32	43	30	27	38	29	32	41	31	43	55	41	483
		Total	212	178	171	155	135	149	147	150	159	126	158	185	178	2,103
	County Totals	CPS	352	302	292	277	237	230	277	278	252	230	250	314	282	3,573
		CWS	88	72	86	69	64	71	87	83	91	78	78	99	79	1,045
		Total	440	374	378	346	301	301	364	361	343	308	328	413	361	4,618
	MORRIS	Morris East	CPS	80	84	74	74	61	59	85	95	68	47	73	77	81
CWS			28	21	23	22	27	20	29	26	27	27	24	34	27	335
Total			108	105	97	96	88	79	114	121	95	74	97	111	108	1,293
Morris West		CPS	84	70	102	92	69	74	100	87	90	98	114	83	73	1,136
		CWS	32	33	47	45	29	22	36	31	31	43	27	34	36	446
		Total	116	103	149	137	98	96	136	118	121	141	141	117	109	1,582
County Totals		CPS	164	154	176	166	130	133	185	182	158	145	187	160	154	2,094
		CWS	60	54	70	67	56	42	65	57	58	70	51	68	63	781
		Total	224	208	246	233	186	175	250	239	216	215	238	228	217	2,875
OCEAN		Ocean North	CPS	132	149	144	145	120	119	118	145	161	125	142	146	150
	CWS		54	45	52	38	34	39	43	32	57	43	63	50	43	593
	Total		186	194	196	183	154	158	161	177	218	168	205	196	193	2,389
	Ocean South	CPS	171	161	172	167	178	171	170	162	135	130	151	137	130	2,035
		CWS	41	47	50	38	44	40	45	44	48	38	47	45	43	570
		Total	212	208	222	205	222	211	215	206	183	168	198	182	173	2,605
	County Totals	CPS	303	310	316	312	298	290	288	307	296	255	293	283	280	3,831
		CWS	95	92	102	76	78	79	88	76	105	81	110	95	86	1,163
		Total	398	402	418	388	376	369	376	383	401	336	403	378	366	4,994
	PASSAIC	Passaic Central	CPS	161	143	221	152	118	133	159	161	163	178	144	202	169
CWS			77	63	67	58	52	55	55	91	66	68	68	89	89	898
Total			238	206	288	210	170	188	214	252	229	246	212	291	258	3,002
Passaic North		CPS	138	137	190	151	116	123	142	153	141	137	152	159	170	1,909
		CWS	67	46	56	51	31	34	66	56	52	66	57	54	82	718
		Total	205	183	246	202	147	157	208	209	193	203	209	213	252	2,627
County Totals		CPS	299	280	411	303	234	256	301	314	304	315	296	361	339	4,013
		CWS	144	109	123	109	83	89	121	147	118	134	125	143	171	1,616
		Total	443	389	534	412	317	345	422	461	422	449	421	504	510	5,629
SALEM		Salem	CPS	52	84	78	66	51	35	77	47	75	58	72	43	78
	CWS		19	12	27	15	17	18	25	25	14	23	22	24	16	257
	Total		71	96	105	81	68	53	102	72	89	81	94	67	94	1,073
	County Totals	CPS	52	84	78	66	51	35	77	47	75	58	72	43	78	816
		CWS	19	12	27	15	17	18	25	25	14	23	22	24	16	257
		Total	71	96	105	81	68	53	102	72	89	81	94	67	94	1,073
SOMERSET	Somerset	CPS	111	117	131	122	126	88	120	121	121	104	104	120	124	1,509
		CWS	42	37	47	41	32	40	35	32	36	39	37	40	41	499
		Total	153	154	178	163	158	128	155	153	157	143	141	160	165	2,008
	County Totals	CPS	111	117	131	122	126	88	120	121	121	104	104	120	124	1,509
		CWS	42	37	47	41	32	40	35	32	36	39	37	40	41	499
		Total	153	154	178	163	158	128	155	153	157	143	141	160	165	2,008

Table 5: Monthly Count of CPS Reports and CWS Referrals Assigned to CP&P Local Offices

County	Local Office	Type of Referral														Total
			Mar 2015	Apr 2015	May 2015	Jun 2015	Jul 2015	Aug 2015	Sep 2015	Oct 2015	Nov 2015	Dec 2015	Jan 2016	Feb 2016	Mar 2016	
SUSSEX	Sussex	CPS	80	84	74	77	86	71	73	83	72	68	82	83	76	1,009
		CWS	29	20	23	35	17	13	16	21	31	27	13	30	29	304
		Total	109	104	97	112	103	84	89	104	103	95	95	113	105	1,313
	County Totals	CPS	80	84	74	77	86	71	73	83	72	68	82	83	76	1,009
		CWS	29	20	23	35	17	13	16	21	31	27	13	30	29	304
		Total	109	104	97	112	103	84	89	104	103	95	95	113	105	1,313
UNION	Union Central	CPS	86	81	85	83	56	52	65	67	64	71	74	85	78	947
		CWS	30	21	19	20	25	26	24	24	14	27	32	29	30	321
		Total	116	102	104	103	81	78	89	91	78	98	106	114	108	1,268
	Union East	CPS	92	85	69	80	51	49	67	74	68	91	75	78	99	978
		CWS	43	27	33	32	8	23	27	35	26	34	25	30	25	368
		Total	135	112	102	112	59	72	94	109	94	125	100	108	124	1,346
	Union West	CPS	81	64	71	62	59	50	70	77	58	65	65	79	84	885
		CWS	28	29	22	28	29	15	23	27	27	30	28	30	34	350
		Total	109	93	93	90	88	65	93	104	85	95	93	109	118	1,235
	County Totals	CPS	259	230	225	225	166	151	202	218	190	227	214	242	261	2,810
		CWS	101	77	74	80	62	64	74	86	67	91	85	89	89	1,039
		Total	360	307	299	305	228	215	276	304	257	318	299	331	350	3,849
WARREN	Warren	CPS	66	82	84	78	71	71	81	87	58	55	72	64	60	929
		CWS	26	19	33	24	18	23	20	20	23	23	21	23	17	290
		Total	92	101	117	102	89	94	101	107	81	78	93	87	77	1,219
	County Totals	CPS	66	82	84	78	71	71	81	87	58	55	72	64	60	929
		CWS	26	19	33	24	18	23	20	20	23	23	21	23	17	290
		Total	92	101	117	102	89	94	101	107	81	78	93	87	77	1,219
County CPS Referral Total	CPS	4,849	4,614	5,060	4,508	3,842	3,714	4,477	4,797	4,098	4,252	4,378	4,657	4,632	57,878	
County CWS Referral Total	CWS	1,536	1,341	1,511	1,385	1,223	1,220	1,446	1,572	1,430	1,492	1,526	1,573	1,618	18,873	
County Referral Total	Total	6,385	5,955	6,571	5,893	5,065	4,934	5,923	6,369	5,528	5,744	5,904	6,230	6,250	76,751	
Central Region IAIU	CPS	50	51	54	54	63	41	53	52	56	62	44	53	46	679	
	CWS	0	0	0	0	0	0	0	0	0	0	0	0	0	0	
	Total	50	51	54	54	63	41	53	52	56	62	44	53	46	679	
Metro Region IAIU	CPS	67	54	70	66	24	30	36	50	48	46	43	60	64	658	
	CWS	0	0	0	0	0	0	0	0	0	0	0	0	0	0	
	Total	67	54	70	66	24	30	36	50	48	46	43	60	64	658	
Northern Region IAIU	CPS	73	70	80	65	56	43	45	66	58	44	58	58	66	782	
	CWS	0	0	0	0	0	0	0	0	0	0	0	0	0	0	
	Total	73	70	80	65	56	43	45	66	58	44	58	58	66	782	
Southern Region IAIU	CPS	68	78	97	88	61	59	60	83	72	61	79	64	76	946	
	CWS	0	0	0	0	0	0	0	0	0	0	0	0	0	0	
	Total	68	78	97	88	61	59	60	83	72	61	79	64	76	946	
IAIU CPS Subtotal	CPS	258	253	301	273	204	173	194	251	234	213	224	235	252	3,065	
IAIU CWS Subtotal	CWS	0	0	0	0	0	0	0	0	0	0	0	0	0	0	
IAIU Subtotal	Total	258	253	301	273	204	173	194	251	234	213	224	235	252	3,065	
County and IAIU CPS Subtotal	CPS	5,107	4,867	5,361	4,781	4,046	3,887	4,671	5,048	4,332	4,465	4,602	4,892	4,884	60,943	
County and IAIU CWS Subtotal	CWS	1,536	1,341	1,511	1,385	1,223	1,220	1,446	1,573	1,430	1,492	1,526	1,573	1,618	18,874	
Unable to Determine⁽¹⁾	Total	118	141	144	153	142	124	153	136	131	114	128	126	165	1,775	
Other Offices	Total	6	2	2	4	2	3	1	1	1	3	1	5	2	33	
Grand Total	Total	6,767	6,351	7,018	6,323	5,413	5,234	6,271	6,758	5,894	6,074	6,257	6,596	6,669	81,625	

⁽¹⁾CPS Reports or CWS Referrals not assigned to an office through the Assignment Designee, but were assigned to an office for an assessment or investigation.