



Child Protection and Permanency

Monthly Screening and Investigation Report March 2018

Christine Norbut Beyer, MSW
Commissioner

April 9, 2018



Table of Contents

Table 1: NJ State Central Registry Activity: Monthly Child Abuse and Neglect Hotline Calls, Intakes and Assignments to Child Protection & Permanency (CP&P) Offices

Chart 1: CP&P Annual Trends in Child Protection Services (CPS) Reports and Child Welfare Services (CWS) Referrals

Table 2: Assignments to CP&P Offices: CPS Reports and CWS Referrals

Table 3: Source of CPS Reports and CWS Referrals

Table 4: Monthly Count of CPS Reports and CWS Referrals Assigned to Counties

Table 5: Monthly Count of CPS Reports and CWS Referrals Assigned to CP&P Local Offices

Table 1: NJ State Central Registry Activity: Monthly Child Abuse and Neglect Hotline Calls, Intakes and Assignments to CP&P Offices^{1,2,7}

2017 - 2018	Hotline Call Activity				Intakes Recorded in NJ SPIRIT ^{6,8}												Assignments to CP&P Offices				
	Total Calls to SCR ³	Abandon Calls ⁴	Average Time to Answer (seconds)	Resulting NJS Intakes ⁵	CPS Reports		CWS Referrals		No Action Required (NAR)		Related Information (RI)		Information & Referral (I&R)		Information Only (IO)		CPS Reports		CWS Referrals		Total
					n	%	n	%	n	%	n	%	n	%	n	%	n	%	n	%	
March 2017	14,751	538	33	16,228	5,349	33.0%	1,844	11.4%	426	2.6%	4,173	25.7%	1,892	11.7%	2,544	15.7%	5,349	74.4%	1,843	25.6%	7,192
April 2017	13,397	575	36	14,760	4,790	32.5%	1,489	10.1%	420	2.8%	4,037	27.4%	1,607	10.9%	2,417	16.4%	4,790	76.3%	1,490	23.7%	6,280
May 2017	16,045	823	49	17,359	5,847	33.7%	1,919	11.1%	378	2.2%	4,509	26.0%	2,028	11.7%	2,678	15.4%	5,847	75.3%	1,919	24.7%	7,766
June 2017	13,832	617	41	15,143	4,853	32.0%	1,664	11.0%	476	3.1%	4,063	26.8%	1,642	10.8%	2,445	16.1%	4,853	74.5%	1,665	25.5%	6,518
July 2017	12,245	710	57	13,369	3,814	28.5%	1,389	10.4%	336	2.5%	3,877	29.0%	1,436	10.7%	2,517	18.8%	3,814	73.3%	1,389	26.7%	5,203
August 2017	11,672	445	38	12,927	3,866	29.9%	1,338	10.4%	393	3.0%	3,447	26.7%	1,535	11.9%	2,348	18.2%	3,866	74.3%	1,340	25.7%	5,206
September 2017	13,450	570	40	14,750	4,719	32.0%	1,642	11.1%	381	2.6%	3,951	26.8%	1,700	11.5%	2,357	16.0%	4,719	74.2%	1,643	25.8%	6,362
October 2017	15,474	657	45	16,828	5,613	33.4%	1,968	11.7%	305	1.8%	4,353	25.9%	1,883	11.2%	2,706	16.1%	5,613	74.1%	1,966	25.9%	7,579
November 2017	14,446	672	43	15,694	5,223	33.3%	1,750	11.2%	235	1.5%	4,246	27.1%	1,680	10.7%	2,560	16.3%	5,223	74.9%	1,753	25.1%	6,976
December 2017	13,005	560	38	14,194	4,601	32.4%	1,594	11.2%	220	1.5%	3,843	27.1%	1,724	12.1%	2,212	15.6%	4,601	74.3%	1,594	25.7%	6,195
January 2018	14,876	952	60	15,833	5,276	33.3%	1,784	11.3%	242	1.5%	4,346	27.4%	1,755	11.1%	2,430	15.3%	5,276	74.7%	1,784	25.3%	7,060
February 2018	13,558	727	54	14,638	4,933	33.7%	1,643	11.2%	251	1.7%	3,807	26.0%	1,740	11.9%	2,264	15.5%	4,933	75.0%	1,644	25.0%	6,577
March 2018	14,714	804	55	15,869	5,212	32.8%	1,727	10.9%	288	1.8%	4,187	26.4%	1,855	11.7%	2,600	16.4%	5,212	75.1%	1,727	24.9%	6,939
	13,959	665	45	15,199	4,930	32.4%	1,673	11.0%	335	2.2%	4,065	26.7%	1,729	11.4%	2,468	16.2%	4,930	74.7%	1,674	25.3%	6,604
Overall Total	181,465	8,650		197,592	64,096		21,751		4,351		52,839		22,477		32,078		64,096	74.7%	21,757	25.3%	85,853

¹Comes from three distinct sources: (1) the Automatic Call Distribution (ACD) phone system; which keeps a count of the number of calls and call routing; (2) Monthly NJSpirit Intakes; which record decision making on calls received by hotline screeners, and (3) NJSpirit extracts of assigned CWS Referrals and CPS Reports.

²The number of Intakes, CPS Reports, and CWS Referrals are based on an extract from NJSpirit. Data extracted by the Office of Research, Evaluation, and Reporting on **April 9, 2018** includes all Intakes, CPS Reports, and CWS Referrals received from **March 1, 2018 through March 31, 2018**.

³The number calls received through the ACD System that were directed to a screener from any call-in phone number.

⁴The number of calls received through the ACD System that are abandoned either while waiting in queue or while ringing.

⁵The number of Intakes entered in NJSpirit from the number of calls received.

⁶The number of Intakes recorded in NJSpirit, by type of Intake. There is not a one-to-one relationship between an ACD call and an Intake; multiple calls to State Central Registry (SCR) may result in a single Intake, or one call may result in multiple Intakes.

⁷Intake: The process of documenting: a report of alleged abuse or neglect of a child (CPS); a request for services on behalf of a child, or a referral of a child for services (CWS); a call in which the caller provides additional or clarifying information about a current service case or active investigation (RI); informing a caller of, or referring a caller to, services available from other private or public sources (I&R); a call that requires no action by CP&P (NAR); or a response to a simple inquiry (IO).

⁸NJ SPIRIT: NJ Statewide Protection Investigation and Reporting Information Tool case management system

CP&P Annual Trends in CPS Reports and CWS Referrals

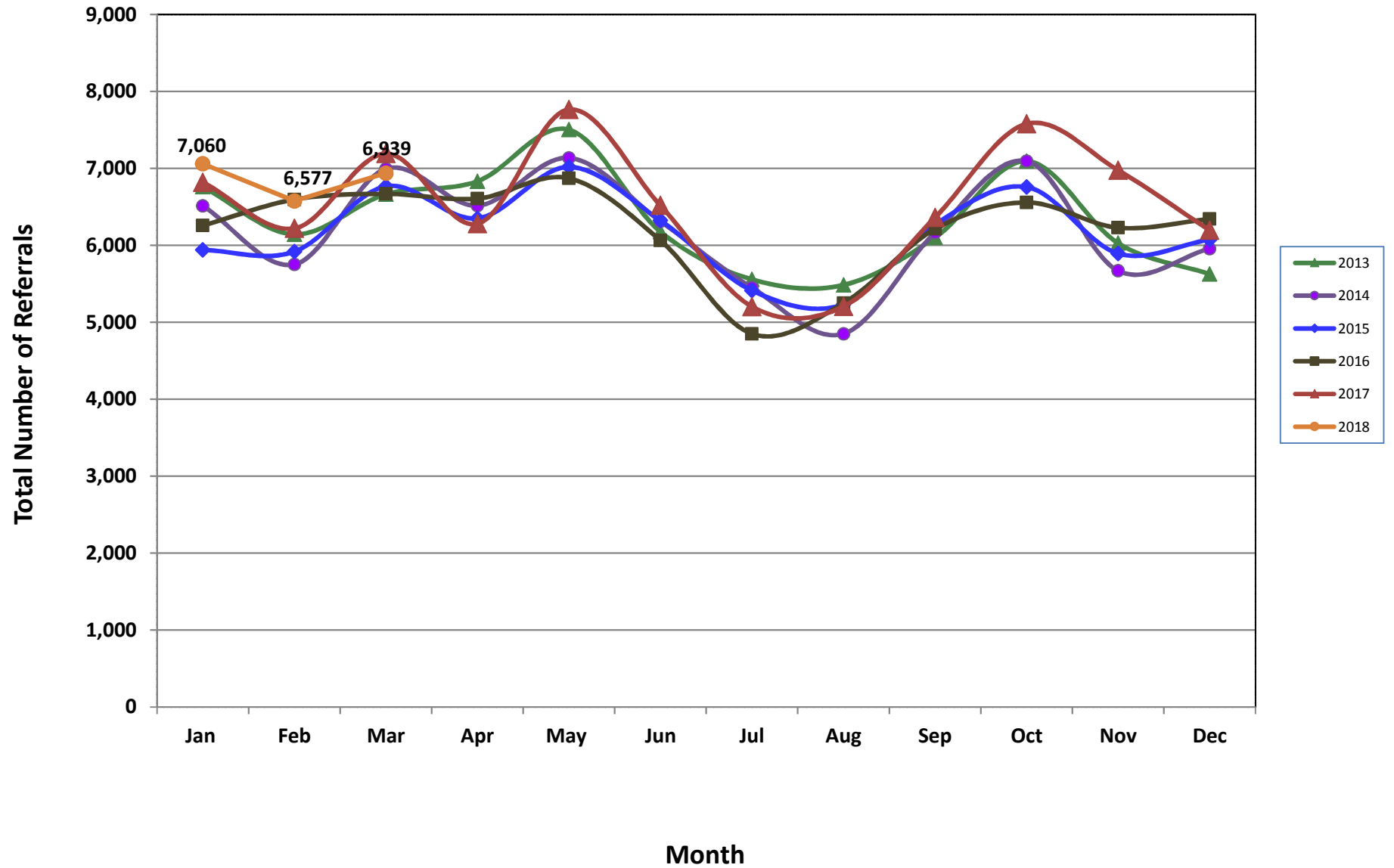


Table 2: Assignments to CP&P Offices: CPS Reports and CWS Referrals¹

Intake Date ³		CPS Reports ²	CWS Referrals ²	Total Assignments ²
2013	Jan 2013	5,464	1,296	6,760
	Feb 2013	4,966	1,177	6,143
	Mar 2013	5,355	1,309	6,664
	Apr 2013	5,430	1,402	6,832
	May 2013	5,993	1,510	7,503
	Jun 2013	4,947	1,230	6,177
	Jul 2013	4,330	1,228	5,558
	Aug 2013	4,330	1,155	5,485
	Sep 2013	4,851	1,251	6,102
	Oct 2013	5,614	1,481	7,095
	Nov 2013	4,694	1,334	6,028
	Dec 2013	4,397	1,229	5,626
	Total	60,371	15,602	75,973
2014	Jan 2014	5,097	1,416	6,513
	Feb 2014	4,457	1,295	5,752
	Mar 2014	5,408	1,586	6,994
	Apr 2014	5,049	1,467	6,516
	May 2014	5,501	1,635	7,136
	Jun 2014	4,796	1,517	6,313
	Jul 2014	4,202	1,247	5,449
	Aug 2014	3,629	1,222	4,851
	Sep 2014	4,668	1,498	6,166
	Oct 2014	5,509	1,586	7,095
	Nov 2014	4,254	1,416	5,670
	Dec 2014	4,509	1,447	5,956
	Total	57,079	17,332	74,411
2015	Jan 2015	4,549	1,391	5,940
	Feb 2015	4,574	1,345	5,919
	Mar 2015	5,187	1,580	6,767
	Apr 2015	4,967	1,384	6,351
	May 2015	5,457	1,561	7,018
	Jun 2015	4,887	1,436	6,323
	Jul 2015	4,140	1,273	5,413
	Aug 2015	3,978	1,256	5,234
	Sep 2015	4,776	1,495	6,271
	Oct 2015	5,139	1,619	6,758
	Nov 2015	4,417	1,477	5,894
	Dec 2015	4,530	1,544	6,074
	Total	56,601	17,361	73,962

Table 2: Assignments to CP&P Offices: CPS Reports and CWS Referrals¹

	Intake Date ³	CPS Reports ²	CWS Referrals ²	Total Assignments ²
2016	Jan 2016	4,686	1,571	6,257
	Feb 2016	4,974	1,622	6,596
	Mar 2016	5,000	1,669	6,669
	Apr 2016	5,065	1,542	6,607
	May 2016	5,238	1,633	6,871
	Jun 2016	4,602	1,461	6,063
	Jul 2016	3,663	1,187	4,850
	Aug 2016	3,941	1,307	5,248
	Sep 2016	4,654	1,559	6,213
	Oct 2016	4,935	1,622	6,557
	Nov 2016	4,677	1,552	6,229
	Dec 2016	4,762	1,580	6,342
	Total	56,197	18,305	74,502
2017	Jan 2017	5,111	1,708	6,819
	Feb 2017	4,716	1,504	6,220
	Mar 2017	5,349	1,843	7,192
	Apr 2017	4,790	1,490	6,280
	May 2017	5,847	1,919	7,766
	Jun 2017	4,853	1,665	6,518
	Jul 2017	3,814	1,389	5,203
	Aug 2017	3,866	1,340	5,206
	Sep 2017	4,719	1,643	6,362
	Oct 2017	5,613	1,966	7,579
	Nov 2017	5,223	1,753	6,976
	Dec 2017	4,601	1,594	6,195
	Total	58,502	19,814	78,316
2018	Jan 2018	5,276	1,784	7,060
	Feb 2018	4,933	1,644	6,577
	Mar 2018	5,212	1,727	6,939
	Total	15,421	5,155	13,637
Grand Total		304,171	93,569	390,801

¹Source of Data: NJ SPIRIT

²A CPS Report or a CWS Referral may include multiple children in a family, with one or more allegation or request for services. In these cases, each CPS Report or CWS Referral is counted once - the CPS Report or the CWS Referral is the unit of analysis rather than the child.

³Prior to January 2014, the number of CPS Reports and CWS Referrals was based on the type of assignment of the CPS Report or CWS Referral. Beginning in January 2014, the number of CPS Reports and CWS Referrals is based on the number of CPS Reports and CWS Referrals received.

Table 3: Source of CPS Reports and CWS Referrals

	Source	Mar 2017	Apr 2017	May 2017	Jun 2017	Jul 2017	Aug 2017	Sep 2017	Oct 2017	Nov 2017	Dec 2017	Jan 2018	Feb 2018	Mar 2018		13 Month Total	
CPS Reports and CWS Referrals	School Staff	2,116	1,400	2,167	1,149	150	90	1211	2030	1851	1622	1932	1970	1969	28%	19,657	23%
	Healthcare Provider	867	824	924	932	818	873	861	968	953	848	1003	809	931	13%	11,611	14%
	Law Enforcement	1,022	1,133	1,177	1,072	1,148	1169	1180	1236	1130	988	1018	1001	1149	17%	14,423	17%
	Government Agency	491	376	434	438	400	423	442	475	399	408	392	410	466	7%	5,554	6%
	Parent	554	517	632	586	571	535	528	567	571	487	569	468	469	7%	7,054	8%
	Relative/Friend/Neighbor	434	462	536	525	541	494	462	513	493	396	531	394	440	6%	6,221	7%
	Anonymous	715	633	837	754	580	627	711	753	641	595	602	623	641	9%	8,712	10%
	CP&P	136	110	128	144	145	142	142	150	107	129	125	121	107	2%	1,686	2%
	Court/Legal	162	132	141	183	131	161	162	148	116	135	130	130	131	2%	1,862	2%
	Community Group/Individual	278	296	336	283	288	307	279	320	299	265	318	289	294	4%	3,852	4%
	Facility Staff (incl Correctional Facility)	81	99	95	102	90	92	89	97	75	46	85	70	72	1%	1,093	1%
	Child (Self)	34	22	38	38	35	41	46	32	41	25	49	33	41	1%	475	1%
	Other	280	259	300	296	283	235	236	272	273	237	294	242	207	3%	3,414	4%
	Daycare/Babysitter	22	17	21	16	23	17	13	18	27	14	12	17	22	0%	239	0%
	Total		7,192	6,280	7,766	6,518	5,203	5,206	6,362	7,579	6,976	6,195	7,060	6,577	6,939		85,853

Table 4: Monthly Count of CPS Reports and CWS Referrals Assigned to Counties

County														Average Number of Assignments Last 13 Months	Feb 18 to Mar 18 Numerical Difference
	Mar 2017	Apr 2017	May 2017	Jun 2017	Jul 2017	Aug 2017	Sep 2017	Oct 2017	Nov 2017	Dec 2017	Jan 2018	Feb 2018	Mar 2018		
Atlantic	271	233	312	253	214	245	255	293	253	221	291	208	267	255	59
Bergen	409	370	425	351	284	291	362	428	418	416	394	371	458	383	87
Burlington	343	262	394	283	262	256	328	371	343	294	315	307	290	311	-17
Camden	643	581	629	571	447	492	530	675	576	535	634	526	559	569	33
Cape May	85	79	118	76	80	64	68	86	84	77	82	73	68	80	-5
Cumberland	248	243	260	236	203	207	249	252	213	193	250	174	223	227	49
Essex	781	701	878	770	561	585	642	804	721	665	787	695	778	721	83
Gloucester	303	251	274	280	221	235	232	282	267	252	268	219	239	256	20
Hudson	453	379	519	434	295	290	418	452	454	418	439	386	466	416	80
Hunterdon	57	39	59	37	49	40	64	64	50	60	60	54	58	53	4
Mercer	277	251	327	272	210	222	308	282	298	232	264	262	262	267	0
Middlesex	514	431	530	404	350	257	420	533	525	419	540	463	498	453	35
Monmouth	399	349	435	357	276	264	349	442	381	327	413	384	427	369	43
Morris	244	239	260	239	163	168	216	290	250	219	269	191	245	230	54
Ocean	420	390	473	377	339	351	342	422	418	356	411	364	420	391	56
Passaic	522	412	550	424	324	319	425	576	513	421	451	456	469	451	13
Salem	78	87	90	85	74	54	102	83	100	80	90	68	99	84	31
Somerset	178	153	180	151	111	117	127	166	169	172	156	157	179	155	22
Sussex	106	74	102	93	72	92	92	106	111	92	126	90	102	97	12
Union	361	317	375	335	255	246	345	353	343	324	361	366	352	333	-14
Warren	95	84	85	99	109	69	117	131	102	72	94	101	117	98	16
County Subtotals	6,787	5,925	7,275	6,127	4,899	4,864	5,991	7,091	6,589	5,845	6,695	5,915	6,576	6,198	661
Central Region IAIU	54	50	75	67	42	55	54	68	73	55	62	58	63	60	5
Metro Region IAIU	68	51	69	48	34	25	41	58	48	56	54	63	48	51	-15
Northern Region IAIU	68	48	87	49	47	34	51	70	58	54	60	53	53	56	0
Southern Region IAIU	87	76	108	80	50	63	66	102	77	84	90	75	74	79	-1
IAIU Subtotals	277	225	339	244	173	177	212	298	256	249	266	249	238	246	-11
Unable to Determine¹	126	127	152	146	129	163	158	187	129	98	94	407	122	157	-285
Other Offices	2	3	0	1	2	2	1	3	2	3	5	6	3	3	-3
Grand Total	7,192	6,280	7,766	6,518	5,203	5,206	6,362	7,579	6,976	6,195	7,060	6,577	6,939	6,604	362

¹CPS Reports or CWS Referrals not assigned to an office through the Assignment Designee, but were assigned to an office for an assessment or investigation.

Table 5: Monthly Count of CPS Reports and CWS Referrals Assigned to CP&P Local Offices

County	Local Office	Type of Referral	Mar 2017	Apr 2017	May 2017	Jun 2017	Jul 2017	Aug 2017	Sep 2017	Oct 2017	Nov 2017	Dec 2017	Jan 2018	Feb 2018	Mar 2018	Total
ATLANTIC	Atlantic East	CPS	118	101	141	107	108	102	107	138	99	94	127	95	131	1,468
		CWS	35	34	45	41	32	41	35	47	51	33	36	29	28	487
		Total	153	135	186	148	140	143	142	185	150	127	163	124	159	1,955
	Atlantic West	CPS	86	74	102	76	60	81	90	74	79	75	94	68	75	1,034
		CWS	32	24	24	29	14	21	23	34	24	19	34	16	33	327
		Total	118	98	126	105	74	102	113	108	103	94	128	84	108	1,361
	County Totals	CPS	204	175	243	183	168	183	197	212	178	169	221	163	206	2,502
		CWS	67	58	69	70	46	62	58	81	75	52	70	45	61	814
		Total	271	233	312	253	214	245	255	293	253	221	291	208	267	3,316
BERGEN	Bergen Central	CPS	121	104	129	109	72	70	106	142	140	128	138	112	144	1,515
		CWS	45	42	51	31	34	33	47	45	47	48	40	44	54	561
		Total	166	146	180	140	106	103	153	187	187	176	178	156	198	2,076
	Bergen South	CPS	165	175	166	151	117	138	149	182	167	177	154	163	198	2,102
		CWS	78	49	79	60	61	50	60	59	64	63	62	52	62	799
		Total	243	224	245	211	178	188	209	241	231	240	216	215	260	2,901
	County Totals	CPS	286	279	295	260	189	208	255	324	307	305	292	275	342	3,617
		CWS	123	91	130	91	95	83	107	104	111	111	102	96	116	1,360
		Total	409	370	425	351	284	291	362	428	418	416	394	371	458	4,977
BURLINGTON	Burlington East	CPS	118	82	155	107	116	97	125	146	137	101	129	110	118	1,541
		CWS	55	34	61	35	32	30	39	52	43	38	39	46	35	539
		Total	173	116	216	142	148	127	164	198	180	139	168	156	153	2,080
	Burlington West	CPS	125	109	130	108	81	96	116	126	117	99	108	117	105	1,437
		CWS	45	37	48	33	33	33	48	47	46	56	39	34	32	531
		Total	170	146	178	141	114	129	164	173	163	155	147	151	137	1,968
	County Totals	CPS	243	191	285	215	197	193	241	272	254	200	237	227	223	2,978
		CWS	100	71	109	68	65	63	87	99	89	94	78	80	67	1,070
		Total	343	262	394	283	262	256	328	371	343	294	315	307	290	4,048
CAMDEN	Camden Central	CPS	158	119	125	136	99	117	106	148	129	122	157	108	126	1,650
		CWS	40	28	31	38	29	36	27	40	41	51	31	30	39	461
		Total	198	147	156	174	128	153	133	188	170	173	188	138	165	2,111
	Camden East	CPS	104	125	111	103	75	94	104	123	118	100	116	99	129	1,401
		CWS	33	32	46	32	34	28	30	49	46	27	39	37	32	465
		Total	137	157	157	135	109	122	134	172	164	127	155	136	161	1,866
	Camden North	CPS	131	120	155	114	88	87	112	113	109	82	118	114	105	1,448
		CWS	46	30	28	43	37	29	41	47	31	35	50	24	34	475
		Total	177	150	183	157	125	116	153	160	140	117	168	138	139	1,923
	Camden South	CPS	96	99	103	88	71	78	88	108	74	85	89	79	75	1,133
		CWS	35	28	30	17	14	23	22	47	28	33	34	35	19	365
		Total	131	127	133	105	85	101	110	155	102	118	123	114	94	1,498
	County Totals	CPS	489	463	494	441	333	376	410	492	430	389	480	400	435	5,632
		CWS	154	118	135	130	114	116	120	183	146	146	154	126	124	1,766
		Total	643	581	629	571	447	492	530	675	576	535	634	526	559	7,398
CAPE MAY	Cape May	CPS	68	50	100	67	64	45	58	66	61	58	64	47	46	794
		CWS	17	29	18	9	16	19	10	20	23	19	18	26	22	246
		Total	85	79	118	76	80	64	68	86	84	77	82	73	68	1,040
	County Totals	CPS	68	50	100	67	64	45	58	66	61	58	64	47	46	794
		CWS	17	29	18	9	16	19	10	20	23	19	18	26	22	246
		Total	85	79	118	76	80	64	68	86	84	77	82	73	68	1,040
CUMBERLAND	Cumberland East	CPS	60	65	70	48	50	54	72	68	48	44	62	36	55	732
		CWS	20	22	21	20	33	23	19	27	13	22	16	17	18	271
		Total	80	87	91	68	83	77	91	95	61	66	78	53	73	1,003
	Cumberland West	CPS	118	123	135	123	84	103	118	117	113	101	146	92	126	1,499
		CWS	50	33	34	45	36	27	40	40	39	26	26	29	24	449
		Total	168	156	169	168	120	130	158	157	152	127	172	121	150	1,948
	County Totals	CPS	178	188	205	171	134	157	190	185	161	145	208	128	181	2,231
		CWS	70	55	55	65	69	50	59	67	52	48	42	46	42	720
		Total	248	243	260	236	203	207	249	252	213	193	250	174	223	2,951

Table 5: Monthly Count of CPS Reports and CWS Referrals Assigned to CP&P Local Offices

County	Local Office	Type of Referral	Mar 2017	Apr 2017	May 2017	Jun 2017	Jul 2017	Aug 2017	Sep 2017	Oct 2017	Nov 2017	Dec 2017	Jan 2018	Feb 2018	Mar 2018	Total
ESSEX	Essex Central	CPS	77	78	118	92	82	78	79	121	108	79	93	77	107	1,189
		CWS	41	32	49	42	33	23	33	40	33	28	42	22	35	453
		Total	118	110	167	134	115	101	112	161	141	107	135	99	142	1,642
	Essex North	CPS	79	62	87	84	50	58	70	68	67	64	80	71	75	915
		CWS	26	35	31	32	25	18	23	35	31	25	25	21	34	361
		Total	105	97	118	116	75	76	93	103	98	89	105	92	109	1,276
	Essex South	CPS	69	65	76	62	45	53	58	69	68	72	83	64	63	847
		CWS	31	22	32	21	12	23	19	34	20	28	18	30	21	311
		Total	100	87	108	83	57	76	77	103	88	100	101	94	84	1,158
	Newark Center City	CPS	103	102	121	114	71	75	89	110	98	104	107	86	105	1,285
		CWS	40	31	38	47	31	37	30	29	34	18	34	35	34	438
		Total	143	133	159	161	102	112	119	139	132	122	141	121	139	1,723
	Newark Northeast	CPS	104	104	108	103	83	90	94	99	106	76	107	97	97	1,268
		CWS	46	39	39	32	25	18	29	44	34	30	44	39	44	463
		Total	150	143	147	135	108	108	123	143	140	106	151	136	141	1,731
	Newark South	CPS	120	95	128	99	78	75	80	116	93	103	116	111	116	1,330
		CWS	45	36	51	42	26	37	38	39	29	38	38	42	47	508
		Total	165	131	179	141	104	112	118	155	122	141	154	153	163	1,838
County Totals	CPS	552	506	638	554	409	429	470	583	540	498	586	506	563	6,834	
	CWS	229	195	240	216	152	156	172	221	181	167	201	189	215	2,534	
	Total	781	701	878	770	561	585	642	804	721	665	787	695	778	9,368	
GLOUCESTER	Gloucester East	CPS	109	85	104	106	74	91	79	102	89	96	94	85	79	1,193
		CWS	29	27	35	31	27	25	33	28	34	30	35	22	24	380
		Total	138	112	139	137	101	116	112	130	123	126	129	107	103	1,573
	Gloucester West	CPS	125	103	118	104	91	85	86	123	113	100	105	93	100	1,346
		CWS	40	36	17	39	29	34	34	29	31	26	34	19	36	404
		Total	165	139	135	143	120	119	120	152	144	126	139	112	136	1,750
	County Totals	CPS	234	188	222	210	165	176	165	225	202	196	199	178	179	2,539
		CWS	69	63	52	70	56	59	67	57	65	56	69	41	60	784
		Total	303	251	274	280	221	235	232	282	267	252	268	219	239	3,323
HUDSON	Hudson Central	CPS	80	89	78	84	59	52	69	71	87	83	103	88	98	1,041
		CWS	27	26	34	32	23	26	35	34	41	38	46	37	36	435
		Total	107	115	112	116	82	78	104	105	128	121	149	125	134	1,476
	Hudson North	CPS	87	69	103	67	67	42	72	76	83	87	75	77	92	997
		CWS	42	21	38	39	19	14	31	29	33	21	29	12	32	360
		Total	129	90	141	106	86	56	103	105	116	108	104	89	124	1,357
	Hudson South	CPS	75	53	101	70	53	45	80	86	68	46	57	47	65	846
		CWS	36	16	45	33	16	21	27	39	17	19	26	19	24	338
		Total	111	69	146	103	69	66	107	125	85	65	83	66	89	1,184
	Hudson West	CPS	71	74	89	77	33	66	74	87	104	89	74	80	80	998
		CWS	35	31	31	32	25	24	30	30	21	35	29	26	39	388
		Total	106	105	120	109	58	90	104	117	125	124	103	106	119	1,386
County Totals	CPS	313	285	371	298	212	205	295	320	342	305	309	292	335	3,882	
	CWS	140	94	148	136	83	85	123	132	112	113	130	94	131	1,521	
	Total	453	379	519	434	295	290	418	452	454	418	439	386	466	5,403	
HUNTERDON	Hunterdon	CPS	47	27	38	31	30	32	46	40	30	44	43	36	42	486
		CWS	10	12	21	6	19	8	18	24	20	16	17	18	16	205
		Total	57	39	59	37	49	40	64	64	50	60	60	54	58	691
	County Totals	CPS	47	27	38	31	30	32	46	40	30	44	43	36	42	486
		CWS	10	12	21	6	19	8	18	24	20	16	17	18	16	205
Total		57	39	59	37	49	40	64	64	50	60	60	54	58	691	
MERCER	Mercer North	CPS	95	89	120	98	62	94	103	104	105	79	94	103	95	1,241
		CWS	45	23	47	29	35	20	49	34	38	35	46	43	42	486
		Total	140	112	167	127	97	114	152	138	143	114	140	146	137	1,727
	Mercer South	CPS	105	104	118	113	78	83	109	109	112	86	89	98	90	1,294
		CWS	32	35	42	32	35	25	46	35	43	32	35	18	35	445
		Total	137	139	160	145	113	108	155	144	155	118	124	116	125	1,739
	County Totals	CPS	200	193	238	211	140	177	212	213	217	165	183	201	185	2,535
		CWS	77	58	89	61	70	45	95	69	81	67	81	61	77	931
Total		277	251	327	272	210	222	307	282	298	232	264	262	262	3,466	

Data in this report is preliminary and may differ from any final report. This report is produced to ensure continuous quality improvement throughout DCF.



Table 5: Monthly Count of CPS Reports and CWS Referrals Assigned to CP&P Local Offices

County	Local Office	Type of Referral	Mar 2017	Apr 2017	May 2017	Jun 2017	Jul 2017	Aug 2017	Sep 2017	Oct 2017	Nov 2017	Dec 2017	Jan 2018	Feb 2018	Mar 2018	Total
MIDDLESEX	Middlesex Central	CPS	105	103	95	78	75	44	99	102	115	87	139	96	118	1256
		CWS	21	22	39	25	29	17	36	41	35	35	40	35	29	404
		Total	126	125	134	103	104	61	135	143	150	122	179	131	147	1660
	Middlesex Coastal	CPS	151	121	135	112	98	75	112	142	124	121	127	124	125	1567
		CWS	40	32	47	43	23	28	41	51	53	33	51	28	45	515
		Total	191	153	182	155	121	103	153	193	177	154	178	152	170	2082
	Middlesex West	CPS	148	119	160	111	90	62	112	141	140	106	132	134	148	1603
		CWS	49	34	54	35	35	31	20	56	58	37	51	46	33	539
		Total	197	153	214	146	125	93	132	197	198	143	183	180	181	2142
	County Totals	CPS	404	343	390	301	263	181	323	385	379	314	398	354	391	4426
CWS		110	88	140	103	87	76	97	148	146	105	142	109	107	1458	
Total		514	431	530	404	350	257	420	533	525	419	540	463	498	5884	
MONMOUTH	Monmouth North	CPS	154	149	174	145	126	103	139	173	152	125	160	167	162	1929
		CWS	47	34	64	52	30	32	38	54	54	44	61	60	58	628
		Total	201	183	238	197	156	135	177	227	206	169	221	227	220	2557
	Monmouth South	CPS	149	113	144	119	85	97	120	161	133	114	150	123	159	1667
		CWS	49	53	53	41	35	32	52	54	42	44	42	34	48	579
		Total	198	166	197	160	120	129	172	215	175	158	192	157	207	2246
	County Totals	CPS	303	262	318	264	211	200	259	334	285	239	310	290	321	3596
		CWS	96	87	117	93	65	64	90	108	96	88	103	94	106	1207
		Total	399	349	435	357	276	264	349	442	381	327	413	384	427	4803
MORRIS	Morris East	CPS	78	83	88	82	53	52	60	81	86	66	96	64	73	962
		CWS	38	31	28	29	21	26	35	36	38	31	40	32	34	419
		Total	116	114	116	111	74	78	95	117	124	97	136	96	107	1381
	Morris West	CPS	89	90	104	93	70	64	85	112	99	88	86	63	97	1140
		CWS	39	35	40	35	19	26	36	61	27	34	47	32	41	472
		Total	128	125	144	128	89	90	121	173	126	122	133	95	138	1612
	County Totals	CPS	167	173	192	175	123	116	145	193	185	154	182	127	170	2102
		CWS	77	66	68	64	40	52	71	97	65	65	87	64	75	891
		Total	244	239	260	239	163	168	216	290	250	219	269	191	245	2993
OCEAN	Ocean North	CPS	180	165	193	148	122	121	134	179	181	168	163	133	161	2048
		CWS	48	43	60	41	38	46	37	52	45	36	56	43	44	589
		Total	228	208	253	189	160	167	171	231	226	204	219	176	205	2637
	Ocean South	CPS	156	148	182	133	134	130	129	144	142	121	159	146	174	1898
		CWS	36	34	38	55	45	54	42	47	50	31	33	42	41	548
		Total	192	182	220	188	179	184	171	191	192	152	192	188	215	2446
	County Totals	CPS	336	313	375	281	256	251	263	323	323	289	322	279	335	3946
		CWS	84	77	98	96	83	100	79	99	95	67	89	85	85	1137
		Total	420	390	473	377	339	351	342	422	418	356	411	364	420	5083
PASSAIC	Passaic Central	CPS	182	168	197	150	117	128	172	228	199	155	173	171	171	2211
		CWS	84	63	82	52	40	40	60	90	76	78	65	75	74	879
		Total	266	231	279	202	157	168	232	318	275	233	238	246	245	3090
	Passaic North	CPS	182	130	194	157	119	104	130	176	158	131	134	135	166	1916
		CWS	74	51	77	65	48	47	63	82	80	57	79	75	58	856
		Total	256	181	271	222	167	151	193	258	238	188	213	210	224	2772
	County Totals	CPS	364	298	391	307	236	232	302	404	357	286	307	306	337	4127
		CWS	158	114	159	117	88	87	123	172	156	135	144	150	132	1735
		Total	522	412	550	424	324	319	425	576	513	421	451	456	469	5862
SALEM	Salem	CPS	61	72	65	68	52	45	82	67	77	58	68	56	79	850
		CWS	17	15	25	17	22	9	20	16	23	22	22	12	20	240
		Total	78	87	90	85	74	54	102	83	100	80	90	68	99	1090
	County Totals	CPS	61	72	65	68	52	45	82	67	77	58	68	56	79	850
		CWS	17	15	25	17	22	9	20	16	23	22	22	12	20	240
Total	78	87	90	85	74	54	102	83	100	80	90	68	99	1090		
SOMERSET	Somerset	CPS	126	122	135	121	74	83	97	136	130	119	119	127	115	1504
		CWS	52	31	45	30	37	34	30	30	39	53	37	30	64	512
		Total	178	153	180	151	111	117	127	166	169	172	156	157	179	2016
	County Totals	CPS	126	122	135	121	74	83	97	136	130	119	119	127	115	1504
		CWS	52	31	45	30	37	34	30	30	39	53	37	30	64	512
Total	178	153	180	151	111	117	127	166	169	172	156	157	179	2016		

Data in this report is preliminary and may differ from any final report. This report is produced to ensure continuous quality improvement throughout DCF.

Table 5: Monthly Count of CPS Reports and CWS Referrals Assigned to CP&P Local Offices

County	Local Office	Type of Referral														Total
			Mar 2017	Apr 2017	May 2017	Jun 2017	Jul 2017	Aug 2017	Sep 2017	Oct 2017	Nov 2017	Dec 2017	Jan 2018	Feb 2018	Mar 2018	
SUSSEX	Sussex	CPS	85	52	70	67	52	67	69	80	86	70	85	64	70	917
		CWS	21	22	32	26	20	25	23	26	25	22	41	26	32	341
		Total	106	74	102	93	72	92	92	106	111	92	126	90	102	1258
	County Totals	CPS	85	52	70	67	52	67	69	80	86	70	85	64	70	917
		CWS	21	22	32	26	20	25	23	26	25	22	41	26	32	341
		Total	106	74	102	93	72	92	92	106	111	92	126	90	102	1258
UNION	Union Central	CPS	94	80	87	84	73	72	68	74	84	91	88	89	87	1071
		CWS	31	21	21	35	30	21	40	31	18	19	30	36	29	362
		Total	125	101	108	119	103	93	108	105	102	110	118	125	116	1433
	Union East	CPS	94	82	97	97	55	69	91	88	91	75	102	91	98	1130
		CWS	22	30	35	27	15	15	31	39	26	29	26	32	33	360
		Total	116	112	132	124	70	84	122	127	117	104	128	123	131	1490
	Union West	CPS	87	86	94	57	53	51	86	88	88	83	77	84	83	1017
		CWS	33	18	41	35	29	18	29	33	36	27	38	34	22	393
		Total	120	104	135	92	82	69	115	121	124	110	115	118	105	1410
	County Totals	CPS	275	248	278	238	181	192	245	250	263	249	267	264	268	3218
		CWS	86	69	97	97	74	54	100	103	80	75	94	102	84	1115
		Total	361	317	375	335	255	246	345	353	343	324	361	366	352	4333
WARREN	Warren	CPS	68	61	64	68	80	50	83	98	69	50	75	72	85	923
		CWS	27	23	21	31	29	19	34	33	33	22	19	29	32	352
		Total	95	84	85	99	109	69	117	131	102	72	94	101	117	1275
	County Totals	CPS	68	61	64	68	80	50	83	98	69	50	75	72	85	923
		CWS	27	23	21	31	29	19	34	33	33	22	19	29	32	352
		Total	95	84	85	99	109	69	117	131	102	72	94	101	117	1275
County CPS Referral Total		CPS	5,003	4,489	5,407	4,531	3,569	3,598	4,407	5,202	4,876	4,302	4,955	4,392	4,908	59,639
County CWS Referral Total		CWS	1,784	1,436	1,868	1,596	1,330	1,266	1,583	1,889	1,713	1,543	1,740	1,523	1,668	20,939
County Referral Total		Total	6,787	5,925	7,275	6,127	4,899	4,864	5,990	7,091	6,589	5,845	6,695	5,915	6,576	80,578
Central Region IAIU	CPS	54	50	75	67	42	55	54	68	73	55	62	58	63	776	
	CWS	0	0	0	0	0	0	0	0	0	0	0	0	0	0	
	Total	54	50	75	67	42	55	54	68	73	55	62	58	63	776	
Metro Region IAIU	CPS	68	51	69	48	34	25	41	58	48	56	54	63	48	663	
	CWS	0	0	0	0	0	0	0	0	0	0	0	0	0	0	
	Total	68	51	69	48	34	25	41	58	48	56	54	63	48	663	
Northern Region IAIU	CPS	68	48	87	49	47	34	51	70	58	54	60	53	53	732	
	CWS	0	0	0	0	0	0	0	0	0	0	0	0	0	0	
	Total	68	48	87	49	47	34	51	70	58	54	60	53	53	732	
Southern Region IAIU	CPS	87	76	108	80	50	63	66	102	77	84	90	75	74	1,032	
	CWS	0	0	0	0	0	0	0	0	0	0	0	0	0	0	
	Total	87	76	108	80	50	63	66	102	77	84	90	75	74	1,032	
IAIU CPS Subtotal		CPS	277	225	339	244	173	177	212	298	256	249	266	249	238	3,203
IAIU CWS Subtotal		CWS	0	0	0	0	0	0	0	0	0	0	0	0	0	0
IAIU Subtotal		Total	277	225	339	244	173	177	212	298	256	249	266	249	238	3,203
County and IAIU CPS Subtotal		CPS	5,280	4,714	5,746	4,775	3,742	3,775	4,619	5,500	5,132	4,551	5,221	4,641	5,146	62,842
County and IAIU CWS Subtotal		CWS	1,784	1,436	1,868	1,596	1,330	1,266	1,583	1,889	1,713	1,543	1,740	1,523	1,668	20,939
Unable to Determine⁽¹⁾		Total	126	127	152	146	129	163	158	187	129	98	94	407	122	2,038
Other Offices		Total	2	3	0	1	2	2	2	3	2	3	5	6	3	34
Grand Total		Total	7,192	6,280	7,766	6,518	5,203	5,206	6,362	7,579	6,976	6,195	7,060	6,577	6,939	85,853

⁽¹⁾CPS Reports or CWS Referrals not assigned to an office through the Assignment Designee, but were assigned to an office for an assessment or investigation.