



Child Protection and Permanency

Monthly Screening and Investigation Report April 2016

Allison Blake, Ph.D., L.S.W.
Commissioner

May 12, 2016



Table of Contents

Table 1: NJ State Central Registry Activity: Monthly Child Abuse and Neglect Hotline Calls, Intakes and Assignments to Child Protection & Permanency (CP&P) Offices

Chart 1: CP&P Annual Trends in Child Protection Services (CPS) Reports and Child Welfare Services (CWS) Referrals

Table 2: Assignments to CP&P Offices: CPS Reports and CWS Referrals

Table 3: Source of CPS Reports and CWS Referrals

Table 4: Monthly Count of CPS Reports and CWS Referrals Assigned to Counties

Table 5: Monthly Count of CPS Reports and CWS Referrals Assigned to CP&P Local Offices

Table 1: NJ State Central Registry Activity: Monthly Child Abuse and Neglect Hotline Calls, Intakes and Assignments to CP&P Offices^{1,2,7}

2015 - 2016	Hotline Call Activity				Intakes Recorded in NJ SPIRIT ^{6,8}												Assignments to CP&P Offices				
	Total Calls to SCR ³	Abandon Calls ⁴	Average Time to Answer (seconds)	Resulting NJS Intakes ⁵	CPS Reports		CWS Referrals		No Action Required (NAR)		Related Information (RI)		Information & Referral (I&R)		Information Only (IO)		CPS Reports		CWS Referrals		Total
					n	%	n	%	n	%	n	%	n	%	n	%	n	%	n	%	
April 2015	13,698	409	26	15,107	4,967	32.9%	1,381	9.1%	366	2.4%	3,900	25.8%	1,615	10.7%	2,878	19.1%	4,967	78.2%	1,384	21.8%	6,351
May 2015	15,466	583	39	16,769	5,457	32.5%	1,560	9.3%	340	2.0%	4,437	26.5%	1,874	11.2%	3,101	18.5%	5,457	77.8%	1,561	22.2%	7,018
June 2015	13,760	405	29	15,189	4,887	32.2%	1,436	9.5%	373	2.5%	3,981	26.2%	1,659	10.9%	2,853	18.8%	4,887	77.3%	1,436	22.7%	6,323
July 2015	12,132	380	20	13,624	4,140	30.4%	1,273	9.3%	442	3.2%	3,569	26.2%	1,416	10.4%	2,784	20.4%	4,140	76.5%	1,273	23.5%	5,413
August 2015	12,553	652	24	13,691	3,978	29.1%	1,257	9.2%	401	2.9%	3,713	27.1%	1,384	10.1%	2,958	21.6%	3,978	76.0%	1,256	24.0%	5,234
September 2015	13,335	351	24	14,955	4,776	31.9%	1,494	10.0%	467	3.1%	3,908	26.1%	1,601	10.7%	2,709	18.1%	4,776	76.2%	1,495	23.8%	6,271
October 2015	14,304	315	18	15,821	5,139	32.5%	1,620	10.2%	332	2.1%	4,073	25.7%	1,834	11.6%	2,823	17.8%	5,139	76.0%	1,619	24.0%	6,758
November 2015	13,321	445	20	14,527	4,417	30.4%	1,475	10.2%	347	2.4%	3,942	27.1%	1,513	10.4%	2,833	19.5%	4,417	74.9%	1,477	25.1%	5,894
December 2015	13,186	603	28	14,236	4,530	31.8%	1,544	10.8%	370	2.6%	3,709	26.1%	1,567	11.0%	2,516	17.7%	4,530	74.6%	1,544	25.4%	6,074
January 2016	13,499	551	40	14,655	4,686	32.0%	1,573	10.7%	282	1.9%	4,020	27.4%	1,482	10.1%	2,612	17.8%	4,686	74.9%	1,571	25.1%	6,257
February 2016	13,927	590	40	15,143	4,974	32.8%	1,620	10.7%	419	2.8%	3,836	25.3%	1,627	10.7%	2,667	17.6%	4,974	75.4%	1,622	24.6%	6,596
March 2016	14,064	446	32	15,619	5,000	32.0%	1,671	10.7%	428	2.7%	3,912	25.0%	1,812	11.6%	2,796	17.9%	5,000	75.0%	1,669	25.0%	6,669
April 2016	13,995	448	29	15,326	5,065	33.0%	1,541	10.1%	348	2.3%	3,774	24.6%	1,742	11.4%	2,856	18.6%	5,065	76.7%	1,542	23.3%	6,607
Monthly Average	13,634	475	28	14,974	4,770	31.9%	1,496	10.0%	378	2.5%	3,906	26.1%	1,625	10.9%	2,799	18.7%	4,770	76.1%	1,496	23.9%	6,267
Overall Total	177,240	6,178		194,662	62,016		19,445		4,915		50,774		21,126		36,386		62,016	76.1%	19,449	23.9%	81,465

¹ Comes from three distinct sources: (1) the Automatic Call Distribution (ACD) phone system; which keeps a count of the number of calls and call routing; (2) Monthly NJSpirit Intakes; which record decision making on calls received by hotline screeners, and (3) NJSpirit extracts of assigned CWS Referrals and CPS Reports.

² The number of Intakes, CPS Reports, and CWS Referrals are based on an extract from NJSpirit. Data extracted by the Office of Research, Evaluation, and Reporting on **May 12, 2016** includes all Intakes, CPS Reports, and CWS Referrals received from **April 1, 2016 through April 30, 2016**.

³ The number calls received through the ACD System that were directed to a screener from any call-in phone number.

⁴ The number of calls received through the ACD System that are abandoned either while waiting in queue or while ringing.

⁵ The number of Intakes entered in NJSpirit from the number of calls received.

⁶ The number of Intakes recorded in NJSpirit, by type of Intake. There is not a one-to-one relationship between an ACD call and an Intake; multiple calls to State Central Registry (SCR) may result in a single Intake, or one call may result in multiple Intakes.

⁷ Intake: The process of documenting: a report of alleged abuse or neglect of a child (CPS); a request for services on behalf of a child, or a referral of a child for services (CWS); a call in which the caller provides additional or clarifying information about a current service case or active investigation (RI); informing a caller of, or referring a caller to, services available from other private or public sources (I&R); a call that requires no action by CP&P (NAR); or a response to a simple inquiry (IO).

⁸ NJ SPIRIT: NJ Statewide Protection Investigation and Reporting Information Tool case management system

CP&P Annual Trends in CPS Reports and CWS Referrals

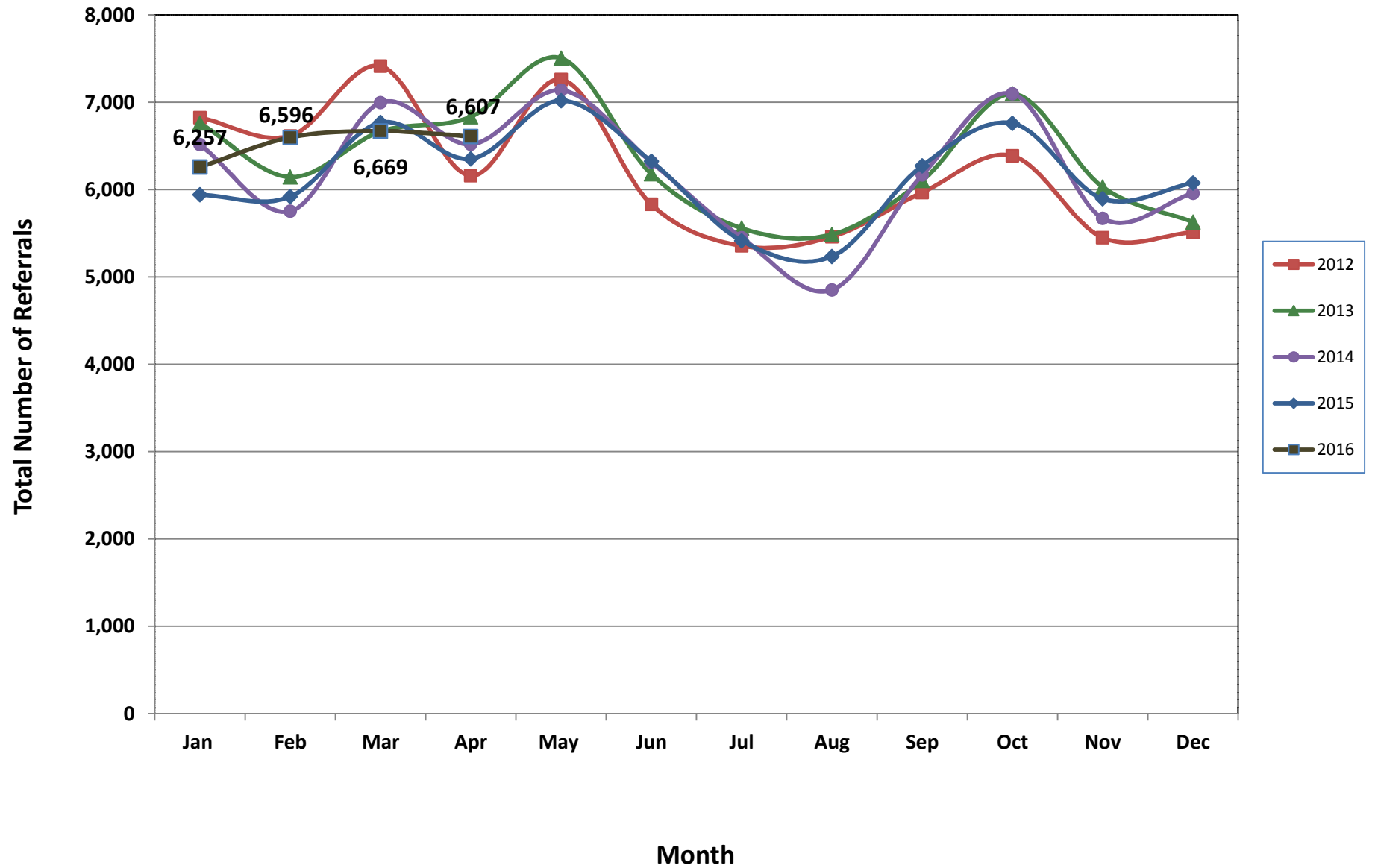


Table 2: Assignments to CP&P Offices: CPS Reports and CWS Referrals¹

Intake Date ³		CPS Reports ²	CWS Referrals ²	Total Assignments ²
2012	Jan 2012	5,530	1,294	6,824
	Feb 2012	5,358	1,255	6,613
	Mar 2012	5,985	1,428	7,413
	Apr 2012	4,899	1,259	6,158
	May 2012	5,874	1,385	7,259
	Jun 2012	4,640	1,190	5,830
	Jul 2012	4,254	1,101	5,355
	Aug 2012	4,325	1,135	5,460
	Sep 2012	4,769	1,196	5,965
	Oct 2012	5,178	1,207	6,385
	Nov 2012	4,310	1,138	5,448
	Dec 2012	4,394	1,116	5,510
	Total	59,516	14,704	74,220
2013	Jan 2013	5,464	1,296	6,760
	Feb 2013	4,966	1,177	6,143
	Mar 2013	5,355	1,309	6,664
	Apr 2013	5,430	1,402	6,832
	May 2013	5,993	1,510	7,503
	Jun 2013	4,947	1,230	6,177
	Jul 2013	4,330	1,228	5,558
	Aug 2013	4,330	1,155	5,485
	Sep 2013	4,851	1,251	6,102
	Oct 2013	5,614	1,481	7,095
	Nov 2013	4,694	1,334	6,028
	Dec 2013	4,397	1,229	5,626
	Total	60,371	15,602	75,973
2014	Jan 2014	5,097	1,416	6,513
	Feb 2014	4,457	1,295	5,752
	Mar 2014	5,408	1,586	6,994
	Apr 2014	5,049	1,467	6,516
	May 2014	5,501	1,635	7,136
	Jun 2014	4,796	1,517	6,313
	Jul 2014	4,202	1,247	5,449
	Aug 2014	3,629	1,222	4,851
	Sep 2014	4,668	1,498	6,166
	Oct 2014	5,509	1,586	7,095
	Nov 2014	4,254	1,416	5,670
	Dec 2014	4,509	1,447	5,956
	Total	57,079	17,332	74,411

Table 2: Assignments to CP&P Offices: CPS Reports and CWS Referrals¹

Intake Date ³		CPS Reports ²	CWS Referrals ²	Total Assignments ²
2015	Jan 2015	4,549	1,391	5,940
	Feb 2015	4,574	1,345	5,919
	Mar 2015	5,187	1,580	6,767
	Apr 2015	4,967	1,384	6,351
	May 2015	5,457	1,561	7,018
	Jun 2015	4,887	1,436	6,323
	Jul 2015	4,140	1,273	5,413
	Aug 2015	3,978	1,256	5,234
	Sep 2015	4,776	1,495	6,271
	Oct 2015	5,139	1,619	6,758
	Nov 2015	4,417	1,477	5,894
	Dec 2015	4,530	1,544	6,074
	Total	56,601	17,361	73,962
2016	Jan 2016	4,686	1,571	6,257
	Feb 2016	4,974	1,622	6,596
	March 2016	5,000	1,669	6,669
	April 2016	5,065	1,542	6,607
	Total	19,725	6,404	26,129
Grand Total		253,292	71,403	324,695

¹Source of Data: NJ SPIRIT

²A CPS Report or a CWS Referral may include multiple children in a family, with one or more allegation or request for services. In these cases, each CPS Report or CWS Referral is counted once - the CPS Report or the CWS Referral is the unit of analysis rather than the child.

³Prior to January 2014, the number of CPS Reports and CWS Referrals was based on the type of assignment of the CPS Report or CWS Referral. Beginning in January 2014, the number of CPS Reports and CWS Referrals is based on the number of CPS Reports and CWS Referrals received.

Table 3: Source of CPS Reports and CWS Referrals

CPS Reports and CWS Referrals	Source	Apr 2015	May 2015	Jun 2015	Jul 2015	Aug 2015	Sep 2015	Oct 2015	Nov 2015	Dec 2015	Jan 2016	Feb 2016	Mar 2016	April 2016	
	School Staff	1,487	1,868	1,166	183	75	1,123	1,763	1,454	1,596	1,569	1,900	1,690	1,646	25%
Healthcare Provider	861	812	808	816	832	780	825	766	780	830	852	892	895	14%	
Law Enforcement	925	1056	1093	1082	1,010	1,040	1,003	909	910	910	953	1,052	1,030	16%	
Government Agency	445	370	422	495	449	437	426	376	389	412	394	448	410	6%	
Parent	493	578	581	594	592	589	518	451	495	529	504	503	566	9%	
Relative/Friend/Neighbor	484	540	546	604	595	592	526	466	455	446	454	424	473	7%	
Anonymous	641	802	725	611	622	739	710	609	587	628	612	676	662	10%	
CP&P	117	103	125	119	110	123	137	121	112	113	133	155	104	2%	
Court/Legal	116	128	148	155	113	115	119	108	108	119	132	154	137	2%	
Community Group/Individual	295	266	232	280	297	243	306	240	255	294	274	262	269	4%	
Facility Staff (incl Correctional Facility)	106	76	89	92	105	78	83	83	81	91	80	76	88	1%	
Child (Self)	37	49	41	44	67	47	34	31	21	41	37	36	46	1%	
Other	332	353	330	327	344	348	288	265	274	259	253	286	257	4%	
Daycare/Babysitter	12	17	17	11	23	17	20	15	11	16	18	15	24	0%	
Total	6,351	7,018	6,323	5,413	5,234	6,271	6,758	5,894	6,074	6,257	6,596	6,669	6,607		

Table 4: Monthly Count of CPS Reports and CWS Referrals Assigned to Counties

County														Average # of Assignments the Last 13 Months	Mar 16 to Apr 16 Numerical Difference
	Apr 2015	May 2015	Jun 2015	Jul 2015	Aug 2015	Sep 2015	Oct 2015	Nov 2015	Dec 2015	Jan 2016	Feb 2016	Mar 2016	April 2016		
Atlantic	277	275	239	218	227	295	267	227	255	251	284	265	250	256	-34
Bergen	335	382	296	284	257	345	411	336	394	333	392	369	321	343	-71
Burlington	319	322	274	263	284	307	303	258	268	275	315	309	321	294	6
Camden	506	551	552	449	438	516	609	461	498	558	551	527	573	522	22
Cape May	85	80	69	78	86	92	112	75	89	83	65	79	94	84	29
Cumberland	217	249	217	173	152	231	215	177	174	195	179	206	219	200	40
Essex	699	779	642	583	565	635	675	660	625	685	701	752	743	673	42
Gloucester	288	244	259	258	255	247	300	245	261	251	252	285	267	262	15
Hudson	382	546	471	352	325	399	451	342	431	424	450	412	403	414	-47
Hunterdon	50	51	47	48	38	58	52	37	39	53	58	46	62	49	4
Mercer	244	249	262	198	226	263	324	254	252	265	263	276	278	258	15
Middlesex	418	471	423	335	317	400	466	387	435	419	439	479	492	422	53
Monmouth	374	378	346	301	301	364	361	343	308	328	413	361	373	350	-40
Morris	208	246	233	186	175	250	239	216	215	238	228	217	222	221	-6
Ocean	402	418	388	376	369	376	383	401	336	403	378	366	365	382	-13
Passaic	389	534	412	317	345	422	461	422	449	421	504	510	455	434	-49
Salem	96	105	81	68	53	102	72	89	81	94	67	94	89	84	22
Somerset	154	178	163	158	128	155	153	157	143	141	160	165	152	154	-8
Sussex	104	97	112	103	84	89	104	103	95	95	113	105	94	100	-19
Union	307	299	305	228	215	276	304	257	318	299	331	350	336	294	5
Warren	101	117	102	89	94	101	107	81	78	93	87	77	99	94	12
County Subtotals	5,955	6,571	5,893	5,065	4,934	5,923	6,369	5,528	5,744	5,904	6,230	6,250	6,208	5,890	-22
Central Region IAIU	51	54	54	24	41	53	52	56	62	44	53	46	59	50	6
Metro Region IAIU	54	70	66	56	30	36	50	48	46	43	60	64	60	53	0
Northern Region IAIU	70	80	65	61	43	45	66	58	44	58	58	66	71	60	13
Southern Region IAIU	78	97	88	63	59	60	83	72	61	79	64	76	90	75	26
IAIU Subtotals	253	301	273	204	173	194	251	234	213	224	235	252	280	237	45
Unable to Determine¹	141	144	153	142	124	153	136	131	114	128	126	165	115	136	-11
Other Offices	2	2	4	2	3	1	2	1	3	1	5	2	4	2	-1
Grand Total	6,351	7,018	6,323	5,413	5,234	6,271	6,758	5,894	6,074	6,257	6,596	6,669	6,607	6,267	11

¹CPS Reports or CWS Referrals not assigned to an office through the Assignment Designee, but were assigned to an office for an assessment or investigation.
Data in this report is preliminary and may differ from any final report. This report is produced to ensure continuous quality improvement throughout DCF.



Table 5: Monthly Count of CPS Reports and CWS Referrals Assigned to CP&P Local Offices

County	Local Office	Type of Referral	Apr 2015	May 2015	Jun 2015	Jul 2015	Aug 2015	Sep 2015	Oct 2015	Nov 2015	Dec 2015	Jan 2016	Feb 2016	Mar 2016	Apr 2016	Total
ATLANTIC	Atlantic East	CPS	134	121	115	100	107	134	115	107	113	110	133	144	97	1,530
		CWS	32	38	24	30	26	35	30	32	36	43	34	27	35	422
		Total	166	159	139	130	133	169	145	139	149	153	167	171	132	1,952
	Atlantic West	CPS	86	96	81	72	77	94	101	70	82	70	88	71	95	1,083
		CWS	25	20	19	16	17	32	21	18	24	28	29	23	23	295
		Total	111	116	100	88	94	126	122	88	106	98	117	94	118	1,378
	County Totals	CPS	220	217	196	172	184	228	216	177	195	180	221	215	192	2,613
		CWS	57	58	43	46	43	67	51	50	60	71	63	50	58	717
		Total	277	275	239	218	227	295	267	227	255	251	284	265	250	3,330
BERGEN	Bergen Central	CPS	110	123	102	83	72	98	117	98	119	128	107	121	101	1,379
		CWS	36	34	32	29	29	36	50	37	41	39	51	48	32	494
		Total	146	157	134	112	101	134	167	135	160	167	158	169	133	1,873
	Bergen South	CPS	133	175	120	127	106	157	177	144	164	121	174	150	136	1,884
		CWS	56	50	42	45	50	54	67	57	70	45	60	50	52	698
		Total	189	225	162	172	156	211	244	201	234	166	234	200	188	2,582
	County Totals	CPS	243	298	222	210	178	255	294	242	283	249	281	271	237	3,263
		CWS	92	84	74	74	79	90	117	94	111	84	111	98	84	1,192
		Total	335	382	296	284	257	345	411	336	394	333	392	369	321	4,455
BURLINGTON	Burlington East	CPS	138	125	99	97	110	110	121	93	118	117	127	105	131	1,491
		CWS	28	37	26	38	36	36	31	28	20	32	39	38	32	421
		Total	166	162	125	135	146	146	152	121	138	149	166	143	163	1,912
	Burlington West	CPS	117	122	115	96	97	120	119	107	101	92	109	124	130	1,449
		CWS	36	38	34	32	41	41	32	30	29	34	40	42	28	457
		Total	153	160	149	128	138	161	151	137	130	126	149	166	158	1,906
	County Totals	CPS	255	247	214	193	207	230	240	200	219	209	236	229	261	2,940
		CWS	64	75	60	70	77	77	63	58	49	66	79	80	60	878
		Total	319	322	274	263	284	307	303	258	268	275	315	309	321	3,818
CAMDEN	Camden Central	CPS	115	122	121	105	93	116	148	101	104	127	119	104	136	1,511
		CWS	38	29	27	29	25	36	38	34	24	34	34	44	36	428
		Total	153	151	148	134	118	152	186	135	128	161	153	148	172	1,939
	Camden East	CPS	102	119	125	81	105	109	123	100	106	108	106	104	114	1,402
		CWS	31	30	30	30	28	21	21	32	27	28	27	16	27	348
		Total	133	149	155	111	133	130	144	132	133	136	133	120	141	1,750
	Camden North	CPS	89	101	116	82	77	95	120	83	108	104	105	102	132	1,314
		CWS	31	33	36	26	24	33	40	17	34	40	45	46	27	432
		Total	120	134	152	108	101	128	160	100	142	144	150	148	159	1,746
	Camden South	CPS	88	92	73	76	66	83	88	77	75	85	86	77	79	1,045
		CWS	12	25	24	20	20	23	31	17	20	32	29	34	22	309
		Total	100	117	97	96	86	106	119	94	95	117	115	111	101	1,354
	County Totals	CPS	394	434	435	344	341	403	479	361	393	424	416	387	461	5,272
		CWS	112	117	117	105	97	113	130	100	105	134	135	140	112	1,517
		Total	506	551	552	449	438	516	609	461	498	558	551	527	573	6,789
CAPE MAY	Cape May	CPS	63	66	57	63	69	72	87	51	64	61	51	57	72	833
		CWS	22	14	12	15	17	20	25	24	25	22	14	22	22	254
		Total	85	80	69	78	86	92	112	75	89	83	65	79	94	1,087
	County Totals	CPS	63	66	57	63	69	72	87	51	64	61	51	57	72	833
		CWS	22	14	12	15	17	20	25	24	25	22	14	22	22	254
		Total	85	80	69	78	86	92	112	75	89	83	65	79	94	1,087
CUMBERLAND	Cumberland East	CPS	50	70	66	33	36	61	42	39	46	59	52	48	64	666
		CWS	12	25	19	6	9	18	26	18	14	12	13	16	18	206
		Total	62	95	85	39	45	79	68	57	60	71	65	64	82	872
	Cumberland West	CPS	117	123	99	108	81	123	116	88	83	99	96	116	102	1,351
		CWS	38	31	33	26	26	29	31	32	31	25	18	26	35	381
		Total	155	154	132	134	107	152	147	120	114	124	114	142	137	1,732
	County Totals	CPS	167	193	165	141	117	184	158	127	129	158	148	164	166	2,017
		CWS	50	56	52	32	35	47	57	50	45	37	31	42	53	587
		Total	217	249	217	173	152	231	215	177	174	195	179	206	219	2,604

Data in this report is preliminary and may differ from any final report. This report is produced to ensure continuous quality improvement throughout DCF.



Table 5: Monthly Count of CPS Reports and CWS Referrals Assigned to CP&P Local Offices

County	Local Office	Type of Referral	Apr 2015	May 2015	Jun 2015	Jul 2015	Aug 2015	Sep 2015	Oct 2015	Nov 2015	Dec 2015	Jan 2016	Feb 2016	Mar 2016	Apr 2016	Total
ESSEX	Essex Central	CPS	105	118	81	76	85	80	105	87	72	82	85	108	101	1,185
		CWS	32	36	27	39	41	26	42	37	39	43	37	42	38	479
		Total	137	154	108	115	126	106	147	124	111	125	122	150	139	1,664
	Essex North	CPS	78	75	67	42	40	53	53	54	66	53	73	75	48	777
		CWS	20	20	23	18	17	22	23	21	30	29	25	35	21	304
		Total	98	95	90	60	57	75	76	75	96	82	98	110	69	1,081
	Essex South	CPS	75	71	51	49	49	66	57	58	56	63	79	66	56	796
		CWS	17	16	20	19	16	25	23	16	17	27	22	26	26	270
		Total	92	87	71	68	65	91	80	74	73	90	101	92	82	1,066
	Newark Center City	CPS	90	106	72	61	64	89	83	82	78	91	95	87	110	1,108
		CWS	15	40	27	23	29	29	35	36	39	26	30	42	45	416
		Total	105	146	99	84	93	118	118	118	117	117	125	129	155	1,524
	Newark Northeast	CPS	106	94	108	81	69	101	83	81	65	92	89	99	115	1,183
		CWS	27	34	28	31	26	25	37	34	33	39	30	36	27	407
		Total	133	128	136	112	95	126	120	115	98	131	119	135	142	1,590
	Newark South	CPS	97	127	102	113	94	88	100	106	92	107	96	104	121	1,347
		CWS	37	42	36	31	35	31	34	48	38	33	40	32	35	472
		Total	134	169	138	144	129	119	134	154	130	140	136	136	156	1,819
	County Totals	CPS	551	591	481	422	401	477	481	468	429	488	517	539	551	6,396
		CWS	148	188	161	161	164	158	194	192	196	197	184	213	192	2,348
		Total	699	779	642	583	565	635	675	660	625	685	701	752	743	8,744
GLOUCESTER	Gloucester East	CPS	114	88	85	85	98	98	109	91	101	97	93	112	99	1,270
		CWS	34	18	25	36	34	24	26	17	25	35	24	38	31	367
		Total	148	106	110	121	132	122	135	108	126	132	117	150	130	1,637
	Gloucester West	CPS	115	114	121	118	93	94	133	103	109	91	102	106	115	1,414
		CWS	25	24	28	19	30	31	32	34	26	28	33	29	22	361
		Total	140	138	149	137	123	125	165	137	135	119	135	135	137	1,775
	County Totals	CPS	229	202	206	203	191	192	242	194	210	188	195	218	214	2,684
		CWS	59	42	53	55	64	55	58	51	63	57	67	67	53	728
Total	288	244	259	258	255	247	300	245	261	251	252	285	267	3,412		
HUDSON	Hudson Central	CPS	89	112	88	71	60	62	72	59	79	75	89	74	67	997
		CWS	30	22	30	24	30	25	26	16	25	23	28	25	31	335
		Total	119	134	118	95	90	87	98	75	104	98	117	99	98	1,332
	Hudson North	CPS	65	107	96	60	54	91	86	74	87	95	77	96	88	1,076
		CWS	19	28	27	18	16	22	31	29	30	37	35	34	27	353
		Total	84	135	123	78	70	113	117	103	117	132	112	130	115	1,429
	Hudson South	CPS	70	103	93	79	71	66	93	61	93	60	81	60	68	998
		CWS	23	46	29	23	19	31	28	22	28	20	25	23	21	338
		Total	93	149	122	102	90	97	121	83	121	80	106	83	89	1,336
	Hudson West	CPS	71	103	77	57	55	77	82	60	74	87	90	71	79	983
		CWS	15	25	31	20	20	25	33	21	15	27	25	29	22	308
		Total	86	128	108	77	75	102	115	81	89	114	115	100	101	1,291
	County Totals	CPS	295	425	354	267	240	296	333	254	333	317	337	301	302	4,054
CWS		87	121	117	85	85	103	118	88	98	107	113	111	101	1,334	
Total		382	546	471	352	325	399	451	342	431	424	450	412	403	5,388	
HUNTERDON	Hunterdon	CPS	33	32	32	35	27	41	40	27	27	35	41	33	49	452
		CWS	17	19	15	13	11	17	12	10	12	18	17	13	13	187
		Total	50	51	47	48	38	58	52	37	39	53	58	46	62	639
	County Totals	CPS	33	32	32	35	27	41	40	27	27	35	41	33	49	452
		CWS	17	19	15	13	11	17	12	10	12	18	17	13	13	187
Total	50	51	47	48	38	58	52	37	39	53	58	46	62	639		
MERCER	Mercer North	CPS	98	94	92	70	82	87	115	79	89	91	98	100	95	1,190
		CWS	23	27	25	29	18	33	40	46	33	37	29	33	23	396
		Total	121	121	117	99	100	120	155	125	122	128	127	133	118	1,586
	Mercer South	CPS	94	96	103	76	107	107	125	98	100	102	108	102	121	1,339
		CWS	29	32	42	23	19	36	44	31	30	35	28	41	39	429
		Total	123	128	145	99	126	143	169	129	130	137	136	143	160	1,768
	County Totals	CPS	192	190	195	146	189	194	240	177	189	193	206	202	216	2,529
CWS		52	59	67	52	37	69	84	77	63	72	57	74	62	825	
Total		244	249	262	198	226	263	324	254	252	265	263	276	278	3,354	

Data in this report is preliminary and may differ from any final report. This report is produced to ensure continuous quality improvement throughout DCF.



Table 5: Monthly Count of CPS Reports and CWS Referrals Assigned to CP&P Local Offices

County	Local Office	Type of Referral	Apr 2015	May 2015	Jun 2015	Jul 2015	Aug 2015	Sep 2015	Oct 2015	Nov 2015	Dec 2015	Jan 2016	Feb 2016	Mar 2016	Apr 2016	Total
MIDDLESEX	Middlesex Central	CPS	85	89	65	52	56	86	86	66	91	70	78	77	72	973
		CWS	21	27	17	25	18	28	27	20	27	25	23	25	32	315
		Total	106	116	82	77	74	114	113	86	118	95	101	102	104	1,288
	Middlesex Coastal	CPS	122	151	128	101	105	110	132	110	119	104	129	152	141	1,604
		CWS	34	37	44	43	24	33	35	38	33	41	46	39	39	486
		Total	156	188	172	144	129	143	167	148	152	145	175	191	180	2,090
	Middlesex West	CPS	122	138	132	94	84	105	132	118	114	132	131	133	151	1,586
		CWS	34	29	37	20	30	38	54	35	51	47	32	53	57	517
		Total	156	167	169	114	114	143	186	153	165	179	163	186	208	2,103
	County Totals	CPS	329	378	325	247	245	301	350	294	324	306	338	362	364	4,163
		CWS	89	93	98	88	72	99	116	93	111	113	101	117	128	1,318
		Total	418	471	423	335	317	400	466	387	435	419	439	479	492	5,481
MONMOUTH	Monmouth North	CPS	156	164	152	129	119	159	160	134	135	135	184	145	150	1,922
		CWS	40	43	39	37	33	58	51	50	47	35	44	38	47	562
		Total	196	207	191	166	152	217	211	184	182	170	228	183	197	2,484
	Monmouth South	CPS	146	128	125	108	111	118	118	118	118	95	115	130	137	1,573
		CWS	32	43	30	27	38	29	32	41	31	43	55	41	52	494
		Total	178	171	155	135	149	147	150	159	126	158	185	178	176	2,067
	County Totals	CPS	302	292	277	237	230	277	278	252	230	250	314	282	274	3,495
		CWS	72	86	69	64	71	87	83	91	78	78	99	79	99	1,056
		Total	374	378	346	301	301	364	361	343	308	328	413	361	373	4,551
MORRIS	Morris East	CPS	84	74	74	61	59	85	95	68	47	73	77	81	63	941
		CWS	21	23	22	27	20	29	26	27	27	24	34	27	23	330
		Total	105	97	96	88	79	114	121	95	74	97	111	108	86	1,271
	Morris West	CPS	70	102	92	69	74	100	87	90	98	114	83	73	98	1,150
		CWS	33	47	45	29	22	36	31	31	43	27	34	36	38	452
		Total	103	149	137	98	96	136	118	121	141	141	117	109	136	1,602
	County Totals	CPS	154	176	166	130	133	185	182	158	145	187	160	154	161	2,091
		CWS	54	70	67	56	42	65	57	58	70	51	68	63	61	782
		Total	208	246	233	186	175	250	239	216	215	238	228	217	222	2,873
OCEAN	Ocean North	CPS	149	144	145	120	119	118	145	161	125	142	146	150	157	1,821
		CWS	45	52	38	34	39	43	32	57	43	63	50	43	42	581
		Total	194	196	183	154	158	161	177	218	168	205	196	193	199	2,402
	Ocean South	CPS	161	172	167	178	171	170	162	135	130	151	137	130	127	1,991
		CWS	47	50	38	44	40	45	44	48	38	47	45	43	39	568
		Total	208	222	205	222	211	215	206	183	168	198	182	173	166	2,559
	County Totals	CPS	310	316	312	298	290	288	307	296	255	293	283	280	284	3,812
		CWS	92	102	76	78	79	88	76	105	81	110	95	86	81	1,149
		Total	402	418	388	376	369	376	383	401	336	403	378	366	365	4,961
PASSAIC	Passaic Central	CPS	143	221	152	118	133	159	161	163	178	144	202	169	166	2,109
		CWS	63	67	58	52	55	55	91	66	68	68	89	89	66	887
		Total	206	288	210	170	188	214	252	229	246	212	291	258	232	2,996
	Passaic North	CPS	137	190	151	116	123	142	153	141	137	152	159	170	162	1,933
		CWS	46	56	51	31	34	66	56	52	66	57	54	82	61	712
		Total	183	246	202	147	157	208	209	193	203	209	213	252	223	2,645
	County Totals	CPS	280	411	303	234	256	301	314	304	315	296	361	339	328	4,042
		CWS	109	123	109	83	89	121	147	118	134	125	143	171	127	1,599
		Total	389	534	412	317	345	422	461	422	449	421	504	510	455	5,641
SALEM	Salem	CPS	84	78	66	51	35	77	47	75	58	72	43	78	61	825
		CWS	12	27	15	17	18	25	25	14	23	22	24	16	28	266
		Total	96	105	81	68	53	102	72	89	81	94	67	94	89	1,091
	County Totals	CPS	84	78	66	51	35	77	47	75	58	72	43	78	61	825
		CWS	12	27	15	17	18	25	25	14	23	22	24	16	28	266
		Total	96	105	81	68	53	102	72	89	81	94	67	94	89	1,091
SOMERSET	Somerset	CPS	117	131	122	126	88	120	121	121	104	104	120	124	115	1,513
		CWS	37	47	41	32	40	35	32	36	39	37	40	41	37	494
		Total	154	178	163	158	128	155	153	157	143	141	160	165	152	2,007
	County Totals	CPS	117	131	122	126	88	120	121	121	104	104	120	124	115	1,513
		CWS	37	47	41	32	40	35	32	36	39	37	40	41	37	494
		Total	154	178	163	158	128	155	153	157	143	141	160	165	152	2,007

Data in this report is preliminary and may differ from any final report. This report is produced to ensure continuous quality improvement throughout DCF.



Table 5: Monthly Count of CPS Reports and CWS Referrals Assigned to CP&P Local Offices

County	Local Office	Type of Referral	Apr 2015	May 2015	Jun 2015	Jul 2015	Aug 2015	Sep 2015	Oct 2015	Nov 2015	Dec 2015	Jan 2016	Feb 2016	Mar 2016	Apr 2016	Total
SUSSEX	Sussex	CPS	84	74	77	86	71	73	83	72	68	82	83	76	77	1,006
		CWS	20	23	35	17	13	16	21	31	27	13	30	29	17	292
		Total	104	97	112	103	84	89	104	103	95	95	113	105	94	1,298
	County Totals	CPS	84	74	77	86	71	73	83	72	68	82	83	76	77	1,006
		CWS	20	23	35	17	13	16	21	31	27	13	30	29	17	292
		Total	104	97	112	103	84	89	104	103	95	95	113	105	94	1,298
UNION	Union Central	CPS	81	85	83	56	52	65	67	64	71	74	85	78	89	950
		CWS	21	19	20	25	26	24	24	14	27	32	29	30	24	315
		Total	102	104	103	81	78	89	91	78	98	106	114	108	113	1,265
	Union East	CPS	85	69	80	51	49	67	74	68	91	75	78	99	99	985
		CWS	27	33	32	8	23	27	35	26	34	25	30	25	28	353
		Total	112	102	112	59	72	94	109	94	125	100	108	124	127	1,338
	Union West	CPS	64	71	62	59	50	70	77	58	65	65	79	84	73	877
		CWS	29	22	28	29	15	23	27	27	30	28	30	34	23	345
		Total	93	93	90	88	65	93	104	85	95	93	109	118	96	1,222
	County Totals	CPS	230	225	225	166	151	202	218	190	227	214	242	261	261	2,812
		CWS	77	74	80	62	64	74	86	67	91	85	89	89	75	1,013
		Total	307	299	305	228	215	276	304	257	318	299	331	350	336	3,825
WARREN	Warren	CPS	82	84	78	71	71	81	87	58	55	72	64	60	68	931
		CWS	19	33	24	18	23	20	20	23	23	21	23	17	31	295
		Total	101	117	102	89	94	101	107	81	78	93	87	77	99	1,226
	County Totals	CPS	82	84	78	71	71	81	87	58	55	72	64	60	68	931
		CWS	19	33	24	18	23	20	20	23	23	21	23	17	31	295
		Total	101	117	102	89	94	101	107	81	78	93	87	77	99	1,226
County CPS Referral Total	CPS	4,614	5,060	4,508	3,842	3,714	4,477	4,797	4,098	4,252	4,378	4,657	4,632	4,714	57,743	
County CWS Referral Total	CWS	1,341	1,511	1,385	1,223	1,220	1,446	1,572	1,430	1,492	1,526	1,573	1,618	1,494	18,831	
County Referral Total	Total	5,955	6,571	5,893	5,065	4,934	5,923	6,369	5,528	5,744	5,904	6,230	6,250	6,208	76,574	
Central Region IAIU	CPS	51	54	54	63	41	53	52	56	62	44	53	46	59	688	
	CWS	0	0	0	0	0	0	0	0	0	0	0	0	0	0	
	Total	51	54	54	63	41	53	52	56	62	44	53	46	59	688	
Metro Region IAIU	CPS	54	70	66	24	30	36	50	48	46	43	60	64	60	651	
	CWS	0	0	0	0	0	0	0	0	0	0	0	0	0	0	
	Total	54	70	66	24	30	36	50	48	46	43	60	64	60	651	
Northern Region IAIU	CPS	70	80	65	56	43	45	66	58	44	58	58	66	71	780	
	CWS	0	0	0	0	0	0	0	0	0	0	0	0	0	0	
	Total	70	80	65	56	43	45	66	58	44	58	58	66	71	780	
Southern Region IAIU	CPS	78	97	88	61	59	60	83	72	61	79	64	76	90	968	
	CWS	0	0	0	0	0	0	0	0	0	0	0	0	0	0	
	Total	78	97	88	61	59	60	83	72	61	79	64	76	90	968	
IAIU CPS Subtotal	CPS	253	301	273	204	173	194	251	234	213	224	235	252	280	3,087	
IAIU CWS Subtotal	CWS	0	0	0	0	0	0	0	0	0	0	0	0	0	0	
IAIU Subtotal	Total	253	301	273	204	173	194	251	234	213	224	235	252	280	3,087	
County and IAIU CPS Subtotal	CPS	4,867	5,361	4,781	4,046	3,887	4,671	5,048	4,332	4,465	4,602	4,892	4,884	4,994	60,830	
County and IAIU CWS Subtotal	CWS	1,341	1,511	1,385	1,223	1,220	1,446	1,573	1,430	1,492	1,526	1,573	1,618	1,494	18,832	
Unable to Determine⁽¹⁾	Total	141	144	153	142	124	153	136	131	114	128	126	165	115	1,772	
Other Offices	Total	2	2	4	2	3	1	1	1	3	1	5	2	4	31	
Grand Total	Total	6,351	7,018	6,323	5,413	5,234	6,271	6,758	5,894	6,074	6,257	6,596	6,669	6,607	81,465	

⁽¹⁾CPS Reports or CWS Referrals not assigned to an office through the Assignment Designee, but were assigned to an office for an assessment or investigation.