



Child Protection and Permanency

Monthly Screening and Investigation Report April 2017

Allison Blake, Ph.D., L.S.W.
Commissioner

May 22, 2017



NEW JERSEY DEPARTMENT OF
CHILDREN AND FAMILIES

Table of Contents

Table 1: NJ State Central Registry Activity: Monthly Child Abuse and Neglect Hotline Calls, Intakes and Assignments to Child Protection & Permanency (CP&P) Offices

Chart 1: CP&P Annual Trends in Child Protection Services (CPS) Reports and Child Welfare Services (CWS) Referrals

Table 2: Assignments to CP&P Offices: CPS Reports and CWS Referrals

Table 3: Source of CPS Reports and CWS Referrals

Table 4: Monthly Count of CPS Reports and CWS Referrals Assigned to Counties

Table 5: Monthly Count of CPS Reports and CWS Referrals Assigned to CP&P Local Offices

Table 1: NJ State Central Registry Activity: Monthly Child Abuse and Neglect Hotline Calls, Intakes and Assignments to CP&P Offices^{1,2,7}

2016 - 2017	Hotline Call Activity				Intakes Recorded in NJ SPIRIT ^{6,8}												Assignments to CP&P Offices				
	Total Calls to SCR ³	Abandon Calls ⁴	Average Time to Answer (seconds)	Resulting NJS Intakes ⁵	CPS Reports		CWS Referrals		No Action Required (NAR)		Related Information (RI)		Information & Referral (I&R)		Information Only (IO)		CPS Reports		CWS Referrals		Total
					n	%	n	%	n	%	n	%	n	%	n	%	n	%	n	%	
April 2016	13,995	448	29	15,326	5,065	33.0%	1,541	10.1%	348	2.3%	3,774	24.6%	1,742	11.4%	2,856	18.6%	5,065	76.7%	1,542	23.3%	6,607
May 2016	14,389	413	26	15,806	5,238	33.1%	1,634	10.3%	393	2.5%	3,902	24.7%	1,852	11.7%	2,787	17.6%	5,238	76.2%	1,633	23.8%	6,871
June 2016	13,304	396	26	14,592	4,602	31.5%	1,460	10.0%	336	2.3%	3,687	25.3%	1,808	12.4%	2,699	18.5%	4,602	75.9%	1,461	24.1%	6,063
July 2016	11,304	338	25	12,531	3,663	29.2%	1,186	9.5%	295	2.4%	3,477	27.7%	1,376	11.0%	2,534	20.2%	3,663	75.5%	1,187	24.5%	4,850
August 2016	11,766	270	18	13,169	3,941	29.9%	1,308	9.9%	491	3.7%	3,311	25.1%	1,471	11.2%	2,647	20.1%	3,941	75.1%	1,307	24.9%	5,248
September 2016	13,277	383	25	14,637	4,654	31.8%	1,557	10.6%	305	2.1%	3,868	26.4%	1,699	11.6%	2,554	17.4%	4,654	74.9%	1,559	25.1%	6,213
October 2016	13,924	387	24	15,418	4,935	32.0%	1,623	10.5%	368	2.4%	4,100	26.6%	1,767	11.5%	2,625	17.0%	4,935	75.3%	1,622	24.7%	6,557
November 2016	13,310	441	30	14,666	4,677	31.9%	1,551	10.6%	300	2.0%	3,969	27.1%	1,667	11.4%	2,502	17.1%	4,677	75.1%	1,552	24.9%	6,229
December 2016	13,294	424	32	14,626	4,762	32.6%	1,579	10.8%	352	2.4%	3,916	26.8%	1,598	10.9%	2,419	16.5%	4,762	75.1%	1,580	24.9%	6,342
January 2017	14,182	603	45	15,375	5,111	33.2%	1,708	11.1%	321	2.1%	4,221	27.5%	1,670	10.9%	2,344	15.2%	5,111	75.0%	1,708	25.0%	6,819
February 2017	13,261	524	39	14,478	4,716	32.6%	1,503	10.4%	258	1.8%	3,882	26.8%	1,645	11.4%	2,474	17.1%	4,716	75.8%	1,504	24.2%	6,220
March 2017	14,751	538	33	16,228	5,349	33.0%	1,844	11.4%	426	2.6%	4,173	25.7%	1,892	11.7%	2,544	15.7%	5,349	74.4%	1,843	25.6%	7,192
April 2017	13,397	575	36	14,760	4,790	32.5%	1,489	10.1%	420	2.8%	4,037	27.4%	1,607	10.9%	2,417	16.4%	4,790	76.3%	1,490	23.7%	6,280
	13,396	442	30	14,739	4,731	32.1%	1,537	10.4%	355	2.4%	3,871	26.3%	1,676	11.4%	2,569	17.4%	4,731	75.5%	1,538	24.5%	6,269
Overall Total	174,154	5,740		191,612	61,503		19,983		4,613		50,317		21,794		33,402		61,503	75.5%	19,988	24.5%	81,491

¹ Comes from three distinct sources: (1) the Automatic Call Distribution (ACD) phone system; which keeps a count of the number of calls and call routing; (2) Monthly NJSpirit Intakes; which record decision making on calls received by hotline screeners, and (3) NJSpirit extracts of assigned CWS Referrals and CPS Reports.

² The number of Intakes, CPS Reports, and CWS Referrals are based on an extract from NJSpirit. Data extracted by the Office of Research, Evaluation, and Reporting on **May 22, 2017** includes all Intakes, CPS Reports, and CWS Referrals received from **April 1, 2017 through April 30, 2017**.

³ The number calls received through the ACD System that were directed to a screener from any call-in phone number.

⁴ The number of calls received through the ACD System that are abandoned either while waiting in queue or while ringing.

⁵ The number of Intakes entered in NJSpirit from the number of calls received.

⁶ The number of Intakes recorded in NJSpirit, by type of Intake. There is not a one-to-one relationship between an ACD call and an Intake; multiple calls to State Central Registry (SCR) may result in a single Intake, or one call may result in multiple Intakes.

⁷ Intake: The process of documenting: a report of alleged abuse or neglect of a child (CPS); a request for services on behalf of a child, or a referral of a child for services (CWS); a call in which the caller provides additional or clarifying information about a current service case or active investigation (RI); informing a caller of, or referring a caller to, services available from other private or public sources (I&R); a call that requires no action by CP&P (NAR); or a response to a simple inquiry (IO).

⁸ NJ SPIRIT: NJ Statewide Protection Investigation and Reporting Information Tool case management system

CP&P Annual Trends in CPS Reports and CWS Referrals

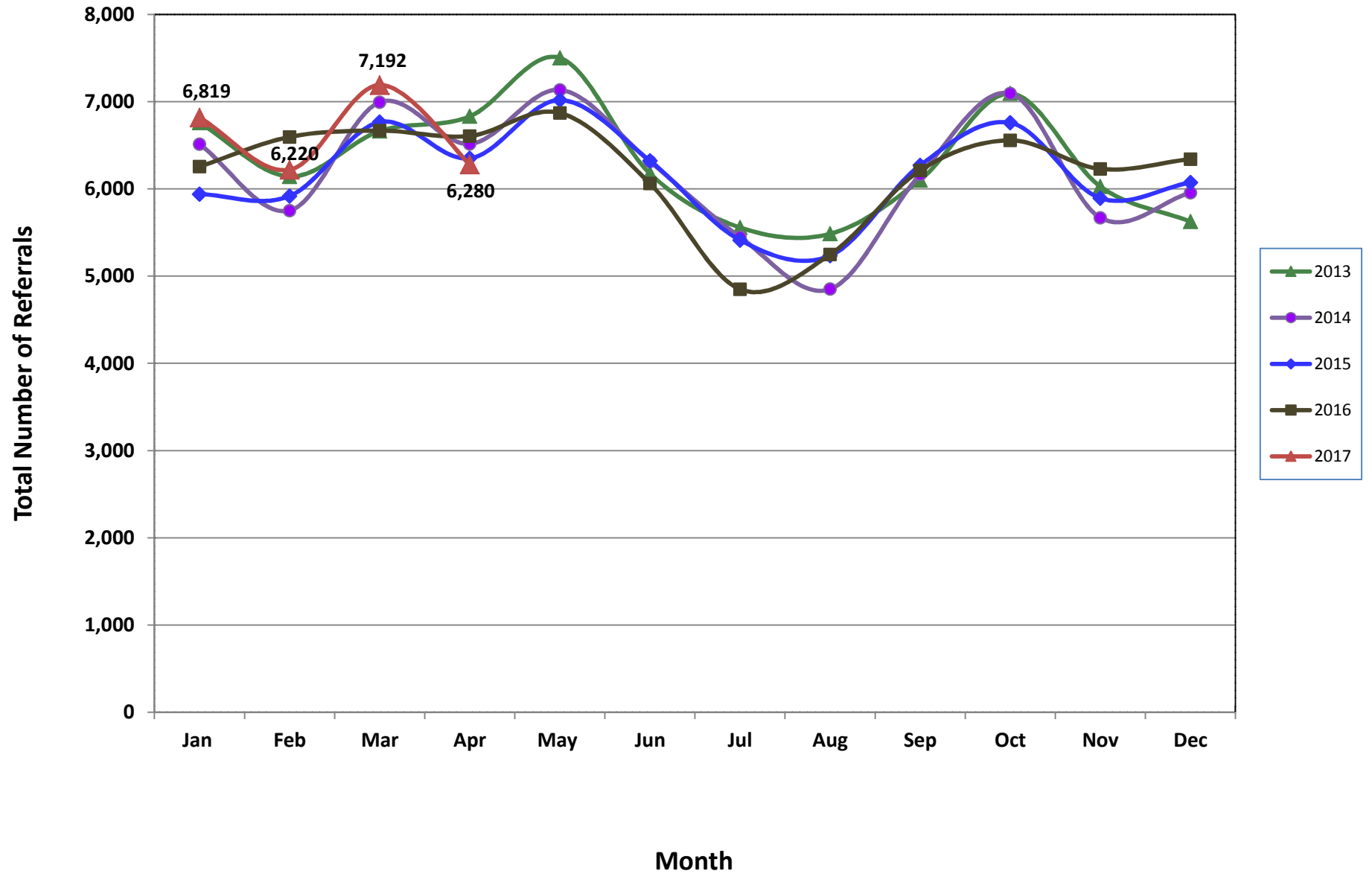


Table 2: Assignments to CP&P Offices: CPS Reports and CWS Referrals¹

Intake Date ³		CPS Reports ²	CWS Referrals ²	Total Assignments ²
2013	Jan 2013	5,464	1,296	6,760
	Feb 2013	4,966	1,177	6,143
	Mar 2013	5,355	1,309	6,664
	Apr 2013	5,430	1,402	6,832
	May 2013	5,993	1,510	7,503
	Jun 2013	4,947	1,230	6,177
	Jul 2013	4,330	1,228	5,558
	Aug 2013	4,330	1,155	5,485
	Sep 2013	4,851	1,251	6,102
	Oct 2013	5,614	1,481	7,095
	Nov 2013	4,694	1,334	6,028
	Dec 2013	4,397	1,229	5,626
	Total	60,371	15,602	75,973
2014	Jan 2014	5,097	1,416	6,513
	Feb 2014	4,457	1,295	5,752
	Mar 2014	5,408	1,586	6,994
	Apr 2014	5,049	1,467	6,516
	May 2014	5,501	1,635	7,136
	Jun 2014	4,796	1,517	6,313
	Jul 2014	4,202	1,247	5,449
	Aug 2014	3,629	1,222	4,851
	Sep 2014	4,668	1,498	6,166
	Oct 2014	5,509	1,586	7,095
	Nov 2014	4,254	1,416	5,670
	Dec 2014	4,509	1,447	5,956
	Total	57,079	17,332	74,411
2015	Jan 2015	4,549	1,391	5,940
	Feb 2015	4,574	1,345	5,919
	Mar 2015	5,187	1,580	6,767
	Apr 2015	4,967	1,384	6,351
	May 2015	5,457	1,561	7,018
	Jun 2015	4,887	1,436	6,323
	Jul 2015	4,140	1,273	5,413
	Aug 2015	3,978	1,256	5,234
	Sep 2015	4,776	1,495	6,271
	Oct 2015	5,139	1,619	6,758
	Nov 2015	4,417	1,477	5,894
	Dec 2015	4,530	1,544	6,074
	Total	56,601	17,361	73,962

Table 2: Assignments to CP&P Offices: CPS Reports and CWS Referrals¹

Intake Date ³		CPS Reports ²	CWS Referrals ²	Total Assignments ²
2016	Jan 2016	4,686	1,571	6,257
	Feb 2016	4,974	1,622	6,596
	Mar 2016	5,000	1,669	6,669
	Apr 2016	5,065	1,542	6,607
	May 2016	5,238	1,633	6,871
	Jun 2016	4,602	1,461	6,063
	Jul 2016	3,663	1,187	4,850
	Aug 2016	3,941	1,307	5,248
	Sep 2016	4,654	1,559	6,213
	Oct 2016	4,935	1,622	6,557
	Nov 2016	4,677	1,552	6,229
	Dec 2016	4,762	1,580	6,342
	Total	56,197	18,305	74,502
2017	Jan 2017	5,111	1,708	6,819
	Feb 2017	4,716	1,504	6,220
	Mar 2017	5,349	1,843	7,192
	Apr 2017	4,790	1,490	6,280
	Total	19,966	6,545	26,511
Grand Total		250,214	75,145	325,359

¹Source of Data: NJ SPIRIT

²A CPS Report or a CWS Referral may include multiple children in a family, with one or more allegation or request for services. In these cases, each CPS Report or CWS Referral is counted once - the CPS Report or the CWS Referral is the unit of analysis rather than the child.

³Prior to January 2014, the number of CPS Reports and CWS Referrals was based on the type of assignment of the CPS Report or CWS Referral. Beginning in January 2014, the number of CPS Reports and CWS Referrals is based on the number of CPS Reports and CWS Referrals received.

Table 3: Source of CPS Reports and CWS Referrals

	Source	Apr 2016	May 2016	Jun 2016	Jul 2016	Aug 2016	Sep 2016	Oct 2016	Nov 2016	Dec 2016	Jan 2017	Feb 2017	Mar 2017	Apr 2017		13 Month Total	
CPS Reports and CWS Referrals	School Staff	1,646	1,765	982	143	87	1,150	1,639	1,628	1,614	1,952	1,723	2,116	1,400	22%	17,845	22%
	Healthcare Provider	895	823	814	771	811	775	837	799	846	873	837	867	824	13%	10,772	13%
	Law Enforcement	1,030	1,056	1,152	1,048	1,093	1,013	1,049	989	936	992	881	1,022	1,133	18%	13,394	16%
	Government Agency	410	419	439	407	509	445	446	399	384	453	432	491	376	6%	5,610	7%
	Parent	566	597	546	521	591	555	517	507	569	544	476	554	517	8%	7,060	9%
	Relative/Friend/Neighbor	473	553	540	472	544	594	506	431	443	444	379	434	462	7%	6,275	8%
	Anonymous	662	777	697	560	611	710	642	605	666	654	645	715	633	10%	8,577	11%
	CP&P	104	133	120	112	132	125	123	117	99	122	105	136	110	2%	1,538	2%
	Court/Legal	137	141	124	143	130	135	124	98	142	126	152	162	132	2%	1,746	2%
	Community Group/Individual	269	236	238	262	286	272	257	260	251	280	229	278	296	5%	3,414	4%
	Facility Staff (incl Correctional Facility)	88	64	68	70	94	95	97	85	85	98	76	81	99	2%	1,100	1%
	Child (Self)	46	37	38	46	50	37	41	41	41	34	34	34	22	0%	501	1%
	Other	257	252	285	274	297	287	266	252	255	232	240	280	259	4%	3,436	4%
	Daycare/Babysitter	24	18	20	21	13	20	13	18	11	15	11	22	17	0%	223	0%
	Total	6,607	6,871	6,063	4,850	5,248	6,213	6,557	6,229	6,342	6,819	6,220	7,192	6,280		81,491	

Table 4: Monthly Count of CPS Reports and CWS Referrals Assigned to Counties

County														Average Number of Assignments Last 13 Months	Mar 17 to Apr 17 Numerical Difference
	April 2016	May 2016	Jun 2016	Jul 2016	Aug 2016	Sep 2016	Oct 2016	Nov 2016	Dec 2016	Jan 2017	Feb 2017	Mar 2017	Apr 2017		
Atlantic	250	291	221	184	234	252	285	243	239	241	221	271	233	243	-6
Bergen	321	385	354	251	264	340	370	352	384	423	375	409	370	354	-14
Burlington	321	321	260	238	262	309	293	325	259	333	289	343	262	293	3
Camden	573	608	532	391	465	534	537	536	557	539	520	643	581	540	24
Cape May	94	82	67	71	78	73	78	68	63	68	81	85	79	76	16
Cumberland	219	245	202	184	183	209	201	230	229	277	213	248	243	222	14
Essex	743	717	644	534	573	626	713	659	709	722	627	781	701	673	-8
Gloucester	267	233	234	212	223	244	266	224	282	272	291	303	251	254	-31
Hudson	403	481	400	304	279	403	450	389	433	449	413	453	379	403	-54
Hunterdon	62	38	42	36	38	44	36	46	54	46	49	57	39	45	-15
Mercer	278	282	255	227	234	272	230	280	224	288	236	277	251	256	27
Middlesex	492	470	387	325	331	426	449	379	441	468	476	514	431	430	-10
Monmouth	373	366	353	272	327	347	382	332	348	391	374	399	349	355	1
Morris	222	247	228	146	153	225	245	214	227	218	219	244	239	217	12
Ocean	365	415	354	316	344	353	408	364	384	416	378	420	390	377	6
Passaic	455	456	401	299	331	397	471	439	431	518	413	522	412	427	-19
Salem	89	82	80	63	67	89	78	66	60	93	73	78	87	77	27
Somerset	152	169	160	139	112	149	158	184	164	147	146	178	153	155	-11
Sussex	94	88	91	90	87	101	80	96	104	101	84	106	74	92	-30
Union	336	373	295	255	244	323	316	312	306	341	303	361	317	314	11
Warren	99	106	88	62	78	97	97	84	79	108	96	95	84	90	5
County Subtotals	6,208	6,455	5,648	4,599	4,907	5,813	6,143	5,822	5,977	6,459	5,877	6,787	5,925	5,894	-52
Central Region IAIU	59	55	53	33	54	52	63	57	59	41	58	54	50	53	-9
Metro Region IAIU	60	68	61	36	32	46	65	48	45	61	54	68	51	53	6
Northern Region IAIU	71	70	66	27	45	62	76	70	52	65	58	68	48	60	-4
Southern Region IAIU	90	73	92	44	72	66	68	89	79	76	71	87	76	76	-3
IAIU Subtotals	280	266	272	140	203	226	272	264	235	243	241	277	225	242	-10
Unable to Determine¹	115	149	140	110	137	168	140	143	129	113	100	126	127	131	-2
Other Offices	4	1	3	1	1	6	2	0	1	4	2	2	3	2	2
Grand Total	6,607	6,871	6,063	4,850	5,248	6,213	6,557	6,229	6,342	6,819	6,220	7,192	6,280	6,269	-62

¹CPS Reports or CWS Referrals not assigned to an office through the Assignment Designee, but were assigned to an office for an assessment or investigation.



Table 5: Monthly Count of CPS Reports and CWS Referrals Assigned to CP&P Local Offices

County	Local Office	Type of Referral	Month												Total	
			Apr 2016	May 2016	Jun 2016	Jul 2016	Aug 2016	Sep 2016	Oct 2016	Nov 2016	Dec 2016	Jan 2017	Feb 2017	Mar 2017		Apr 2017
ATLANTIC	Atlantic East	CPS	97	129	108	90	102	109	127	116	118	107	102	118	101	1,424
		CWS	35	41	34	25	44	38	34	42	33	27	21	35	34	443
		Total	132	170	142	115	146	147	161	158	151	134	123	153	135	1,867
	Atlantic West	CPS	95	94	66	51	72	82	101	60	75	73	69	86	74	998
		CWS	23	27	13	18	16	23	23	25	13	34	29	32	24	300
		Total	118	121	79	69	88	105	124	85	88	107	98	118	98	1,298
	County Totals	CPS	192	223	174	141	174	191	228	176	193	180	171	204	175	2,422
		CWS	58	68	47	43	60	61	57	67	46	61	50	67	58	743
		Total	250	291	221	184	234	252	285	243	239	241	221	271	233	3,165
BERGEN	Bergen Central	CPS	101	134	121	63	73	90	104	104	125	127	118	121	104	1,385
		CWS	32	40	39	37	29	28	34	40	44	52	42	45	42	504
		Total	133	174	160	100	102	118	138	144	169	179	160	166	146	1,889
	Bergen South	CPS	136	162	143	109	115	157	160	161	153	174	152	165	175	1,962
		CWS	52	49	51	42	47	65	72	47	62	70	63	78	49	747
		Total	188	211	194	151	162	222	232	208	215	244	215	243	224	2,709
	County Totals	CPS	237	296	264	172	188	247	264	265	278	301	270	286	279	3,347
		CWS	84	89	90	79	76	93	106	87	106	122	105	123	91	1,251
		Total	321	385	354	251	264	340	370	352	384	423	375	409	370	4,598
BURLINGTON	Burlington East	CPS	131	128	84	94	94	92	105	126	104	118	98	118	82	1,374
		CWS	32	39	34	34	33	49	41	33	30	45	40	55	34	499
		Total	163	167	118	128	127	141	146	159	134	163	138	173	116	1,873
	Burlington West	CPS	130	117	109	87	101	121	106	118	92	125	111	125	109	1,451
		CWS	28	37	33	23	34	47	41	48	33	45	40	45	37	491
		Total	158	154	142	110	135	168	147	166	125	170	151	170	146	1,942
	County Totals	CPS	261	245	193	181	195	213	211	244	196	243	209	243	191	2,825
		CWS	60	76	67	57	67	96	82	81	63	90	80	100	71	990
		Total	321	321	260	238	262	309	293	325	259	333	289	343	262	3,815
CAMDEN	Camden Central	CPS	136	123	122	92	97	115	146	121	114	106	113	158	119	1,562
		CWS	36	38	53	36	41	40	26	39	37	38	34	40	28	486
		Total	172	161	175	128	138	155	172	160	151	144	147	198	147	2,048
	Camden East	CPS	114	123	94	86	102	104	107	98	114	126	88	104	125	1,385
		CWS	27	33	28	31	21	34	32	34	43	43	30	33	32	421
		Total	141	156	122	117	123	138	139	132	157	169	118	137	157	1,806
	Camden North	CPS	132	115	95	56	79	97	101	95	102	102	107	131	120	1,332
		CWS	27	47	34	18	39	42	28	34	36	32	32	46	30	445
		Total	159	162	129	74	118	139	129	129	138	134	139	177	150	1,777
	Camden South	CPS	79	97	80	56	67	86	67	89	78	73	89	96	99	1,056
		CWS	22	32	26	16	19	16	30	26	33	19	27	35	28	329
		Total	101	129	106	72	86	102	97	115	111	92	116	131	127	1,385
	County Totals	CPS	461	458	391	290	345	402	421	403	408	407	397	489	463	5,335
		CWS	112	150	141	101	120	132	116	133	149	132	123	154	118	1,681
		Total	573	608	532	391	465	534	537	536	557	539	520	643	581	7,016
CAPE MAY	Cape May	CPS	72	68	51	51	65	62	62	48	53	52	65	68	50	767
		CWS	22	14	16	20	13	11	16	20	10	16	16	17	29	220
		Total	94	82	67	71	78	73	78	68	63	68	81	85	79	987
	County Totals	CPS	72	68	51	51	65	62	62	48	53	52	65	68	50	767
		CWS	22	14	16	20	13	11	16	20	10	16	16	17	29	220
		Total	94	82	67	71	78	73	78	68	63	68	81	85	79	987
CUMBERLAND	Cumberland East	CPS	64	81	61	46	40	48	40	58	70	70	59	60	65	762
		CWS	18	14	16	18	20	17	16	18	10	26	26	20	22	241
		Total	82	95	77	64	60	65	56	76	80	96	85	80	87	1,003
	Cumberland West	CPS	102	115	101	96	102	113	109	126	111	143	93	118	123	1,452
		CWS	35	35	24	24	21	31	36	28	38	38	35	50	33	428
		Total	137	150	125	120	123	144	145	154	149	181	128	168	156	1,880
	County Totals	CPS	166	196	162	142	142	161	149	184	181	213	152	178	188	2,214
		CWS	53	49	40	42	41	48	52	46	48	64	61	70	55	669
		Total	219	245	202	184	183	209	201	230	229	277	213	248	243	2,883

Data in this report is preliminary and may differ from any final report. This report is produced to ensure continuous quality improvement throughout DCF.



Table 5: Monthly Count of CPS Reports and CWS Referrals Assigned to CP&P Local Offices

County	Local Office	Type of Referral	Apr 2016	May 2016	Jun 2016	Jul 2016	Aug 2016	Sep 2016	Oct 2016	Nov 2016	Dec 2016	Jan 2017	Feb 2017	Mar 2017	Apr 2017	Total	
SUSSEX	Sussex	CPS	77	71	68	74	69	79	55	70	71	71	68	85	52	910	
		CWS	17	17	23	16	18	22	25	26	33	30	16	21	22	286	
		Total	94	88	91	90	87	101	80	96	104	101	84	106	74	1196	
	County Totals	CPS	77	71	68	74	69	79	55	70	71	71	68	85	52	910	
		CWS	17	17	23	16	18	22	25	26	33	30	16	21	22	286	
		Total	94	88	91	90	87	101	80	96	104	101	84	106	74	1196	
UNION	Union Central	CPS	89	105	67	60	55	78	84	82	83	86	75	94	80	1038	
		CWS	24	23	29	24	27	26	22	22	28	25	38	20	31	21	338
		Total	113	128	96	84	82	104	106	110	108	124	95	125	101	1376	
	Union East	CPS	99	100	79	67	66	74	77	78	73	98	82	94	82	1069	
		CWS	28	25	28	26	23	28	35	33	31	29	25	22	30	363	
		Total	127	125	107	93	89	102	112	111	104	127	107	116	112	1432	
	Union West	CPS	73	87	60	57	49	90	78	65	62	68	67	87	86	929	
		CWS	23	33	32	21	24	27	20	26	32	22	34	33	18	345	
		Total	96	120	92	78	73	117	98	91	94	90	101	120	104	1274	
	County Totals	CPS	261	292	206	184	170	242	239	225	218	252	224	275	248	3036	
		CWS	75	81	89	71	74	81	77	87	88	89	79	86	69	1046	
		Total	336	373	295	255	244	323	316	312	306	341	303	361	317	4082	
WARREN	Warren	CPS	68	74	67	49	68	76	79	68	57	88	68	68	61	891	
		CWS	31	32	21	13	10	21	18	16	22	20	28	27	23	282	
		Total	99	106	88	62	78	97	97	84	79	108	96	95	84	1173	
	County Totals	CPS	68	74	67	49	68	76	79	68	57	88	68	68	61	891	
		CWS	31	32	21	13	10	21	18	16	22	20	28	27	23	282	
		Total	99	106	88	62	78	97	97	84	79	108	96	95	84	1173	
County CPS Referral Total	CPS	4,714	4,882	4,237	3,453	3,653	4,328	4,571	4,328	4,448	4,794	4,413	5,003	4,489	57,313		
County CWS Referral Total	CWS	1,494	1,573	1,411	1,146	1,254	1,485	1,572	1,494	1,529	1,665	1,464	1,784	1,436	19,307		
County Referral Total	Total	6,208	6,455	5,648	4,599	4,907	5,813	6,143	5,822	5,977	6,459	5,877	6,787	5,925	76,620		
Central Region IAIU	CPS	59	55	53	33	54	52	63	57	59	41	58	54	50	688		
	CWS	0	0	0	0	0	0	0	0	0	0	0	0	0	0		
	Total	59	55	53	33	54	52	63	57	59	41	58	54	50	688		
Metro Region IAIU	CPS	60	68	61	36	32	46	65	48	45	61	54	68	51	695		
	CWS	0	0	0	0	0	0	0	0	0	0	0	0	0	0		
	Total	60	68	61	36	32	46	65	48	45	61	54	68	51	695		
Northern Region IAIU	CPS	71	70	66	27	45	62	76	70	52	65	58	68	48	778		
	CWS	0	0	0	0	0	0	0	0	0	0	0	0	0	0		
	Total	71	70	66	27	45	62	76	70	52	65	58	68	48	778		
Southern Region IAIU	CPS	90	73	92	44	72	66	68	88	79	76	71	87	76	982		
	CWS	0	0	0	0	0	0	0	1	0	0	0	0	0	1		
	Total	90	73	92	44	72	66	68	89	79	76	71	87	76	983		
IAIU CPS Subtotal	CPS	280	266	272	140	203	226	272	263	235	243	241	277	225	3,143		
IAIU CWS Subtotal	CWS	0	0	0	0	0	0	0	1	0	0	0	0	0	1		
IAIU Subtotal	Total	280	266	272	140	203	226	272	264	235	243	241	277	225	3,144		
County and IAIU CPS Subtotal	CPS	4,994	5,148	4,509	3,593	3,856	4,554	4,843	4,591	4,683	5,037	4,654	5,280	4,714	60,456		
County and IAIU CWS Subtotal	CWS	1,494	1,573	1,411	1,146	1,254	1,485	1,572	1,495	1,529	1,665	1,464	1,784	1,436	19,308		
Unable to Determine⁽¹⁾	Total	115	149	140	110	137	168	140	143	129	113	100	126	127	1,697		
Other Offices	Total	4	1	3	1	1	6	2	0	1	4	2	2	3	30		
Grand Total	Total	6,607	6,871	6,063	4,850	5,248	6,213	6,557	6,229	6,342	6,819	6,220	7,192	6,280	81,491		

⁽¹⁾CPS Reports or CWS Referrals not assigned to an office through the Assignment Designee, but were assigned to an office for an assessment or investigation.