



## **Child Protection and Permanency**

# **Monthly Screening and Investigation Report May 2016**

Allison Blake, Ph.D., L.S.W.  
Commissioner

June 16, 2016



## Table of Contents

Table 1: NJ State Central Registry Activity: Monthly Child Abuse and Neglect Hotline Calls, Intakes and Assignments to Child Protection & Permanency (CP&P) Offices

---

Chart 1: CP&P Annual Trends in Child Protection Services (CPS) Reports and Child Welfare Services (CWS) Referrals

---

Table 2: Assignments to CP&P Offices: CPS Reports and CWS Referrals

---

Table 3: Source of CPS Reports and CWS Referrals

---

Table 4: Monthly Count of CPS Reports and CWS Referrals Assigned to Counties

---

Table 5: Monthly Count of CPS Reports and CWS Referrals Assigned to CP&P Local Offices

---

**Table 1: NJ State Central Registry Activity: Monthly Child Abuse and Neglect Hotline Calls, Intakes and Assignments to CP&P Offices<sup>1,2,7</sup>**

2015 - 2016	Hotline Call Activity				Intakes Recorded in NJ SPIRIT <sup>6,8</sup>												Assignments to CP&P Offices				
	Total Calls to SCR <sup>3</sup>	Abandon Calls <sup>4</sup>	Average Time to Answer (seconds)	Resulting NJS Intakes <sup>5</sup>	CPS Reports		CWS Referrals		No Action Required (NAR)		Related Information (RI)		Information & Referral (I&R)		Information Only (IO)		CPS Reports		CWS Referrals		Total
					n	%	n	%	n	%	n	%	n	%	n	%	n	%	n	%	
May 2015	15,466	583	39	16,769	5,457	32.5%	1,560	9.3%	340	2.0%	4,437	26.5%	1,874	11.2%	3,101	18.5%	5,457	77.8%	1,561	22.2%	7,018
June 2015	13,760	405	29	15,189	4,887	32.2%	1,436	9.5%	373	2.5%	3,981	26.2%	1,659	10.9%	2,853	18.8%	4,887	77.3%	1,436	22.7%	6,323
July 2015	12,132	380	20	13,624	4,140	30.4%	1,273	9.3%	442	3.2%	3,569	26.2%	1,416	10.4%	2,784	20.4%	4,140	76.5%	1,273	23.5%	5,413
August 2015	12,553	652	24	13,691	3,978	29.1%	1,257	9.2%	401	2.9%	3,713	27.1%	1,384	10.1%	2,958	21.6%	3,978	76.0%	1,256	24.0%	5,234
September 2015	13,335	351	24	14,955	4,776	31.9%	1,494	10.0%	467	3.1%	3,908	26.1%	1,601	10.7%	2,709	18.1%	4,776	76.2%	1,495	23.8%	6,271
October 2015	14,304	315	18	15,821	5,139	32.5%	1,620	10.2%	332	2.1%	4,073	25.7%	1,834	11.6%	2,823	17.8%	5,139	76.0%	1,619	24.0%	6,758
November 2015	13,321	445	20	14,527	4,417	30.4%	1,475	10.2%	347	2.4%	3,942	27.1%	1,513	10.4%	2,833	19.5%	4,417	74.9%	1,477	25.1%	5,894
December 2015	13,186	603	28	14,236	4,530	31.8%	1,544	10.8%	370	2.6%	3,709	26.1%	1,567	11.0%	2,516	17.7%	4,530	74.6%	1,544	25.4%	6,074
January 2016	13,499	551	40	14,655	4,686	32.0%	1,573	10.7%	282	1.9%	4,020	27.4%	1,482	10.1%	2,612	17.8%	4,686	74.9%	1,571	25.1%	6,257
February 2016	13,927	590	40	15,143	4,974	32.8%	1,620	10.7%	419	2.8%	3,836	25.3%	1,627	10.7%	2,667	17.6%	4,974	75.4%	1,622	24.6%	6,596
March 2016	14,064	446	32	15,619	5,000	32.0%	1,671	10.7%	428	2.7%	3,912	25.0%	1,812	11.6%	2,796	17.9%	5,000	75.0%	1,669	25.0%	6,669
April 2016	13,995	448	29	15,326	5,065	33.0%	1,541	10.1%	348	2.3%	3,774	24.6%	1,742	11.4%	2,856	18.6%	5,065	76.7%	1,542	23.3%	6,607
<b>May 2016</b>	<b>14,389</b>	<b>413</b>	<b>26</b>	<b>15,806</b>	<b>5,238</b>	<b>33.1%</b>	<b>1,634</b>	<b>10.3%</b>	<b>393</b>	<b>2.5%</b>	<b>3,902</b>	<b>24.7%</b>	<b>1,852</b>	<b>11.7%</b>	<b>2,787</b>	<b>17.6%</b>	<b>5,238</b>	<b>76.2%</b>	<b>1,633</b>	<b>23.8%</b>	<b>6,871</b>
<b>Monthly Average</b>	<b>13,687</b>	<b>476</b>	<b>28</b>	<b>15,028</b>	<b>4,791</b>	<b>31.9%</b>	<b>1,515</b>	<b>10.1%</b>	<b>380</b>	<b>2.5%</b>	<b>3,906</b>	<b>26.0%</b>	<b>1,643</b>	<b>10.9%</b>	<b>2,792</b>	<b>18.6%</b>	<b>4,791</b>	<b>76.0%</b>	<b>1,515</b>	<b>24.0%</b>	<b>6,307</b>
<b>Overall Total</b>	<b>177,931</b>	<b>6,182</b>		<b>195,361</b>	<b>62,287</b>		<b>19,698</b>		<b>4,942</b>		<b>50,776</b>		<b>21,363</b>		<b>36,295</b>		<b>62,287</b>	<b>76.0%</b>	<b>19,698</b>	<b>24.0%</b>	<b>81,985</b>

<sup>1</sup> Comes from three distinct sources: (1) the Automatic Call Distribution (ACD) phone system; which keeps a count of the number of calls and call routing; (2) Monthly NJSpirit Intakes; which record decision making on calls received by hotline screeners, and (3) NJSpirit extracts of assigned CWS Referrals and CPS Reports.

<sup>2</sup> The number of Intakes, CPS Reports, and CWS Referrals are based on an extract from NJSpirit. Data extracted by the Office of Research, Evaluation, and Reporting on **June 14, 2016** includes all Intakes, CPS Reports, and CWS Referrals received from **May 1, 2016 through May 31, 2016**.

<sup>3</sup> The number calls received through the ACD System that were directed to a screener from any call-in phone number.

<sup>4</sup> The number of calls received through the ACD System that are abandoned either while waiting in queue or while ringing.

<sup>5</sup> The number of Intakes entered in NJSpirit from the number of calls received.

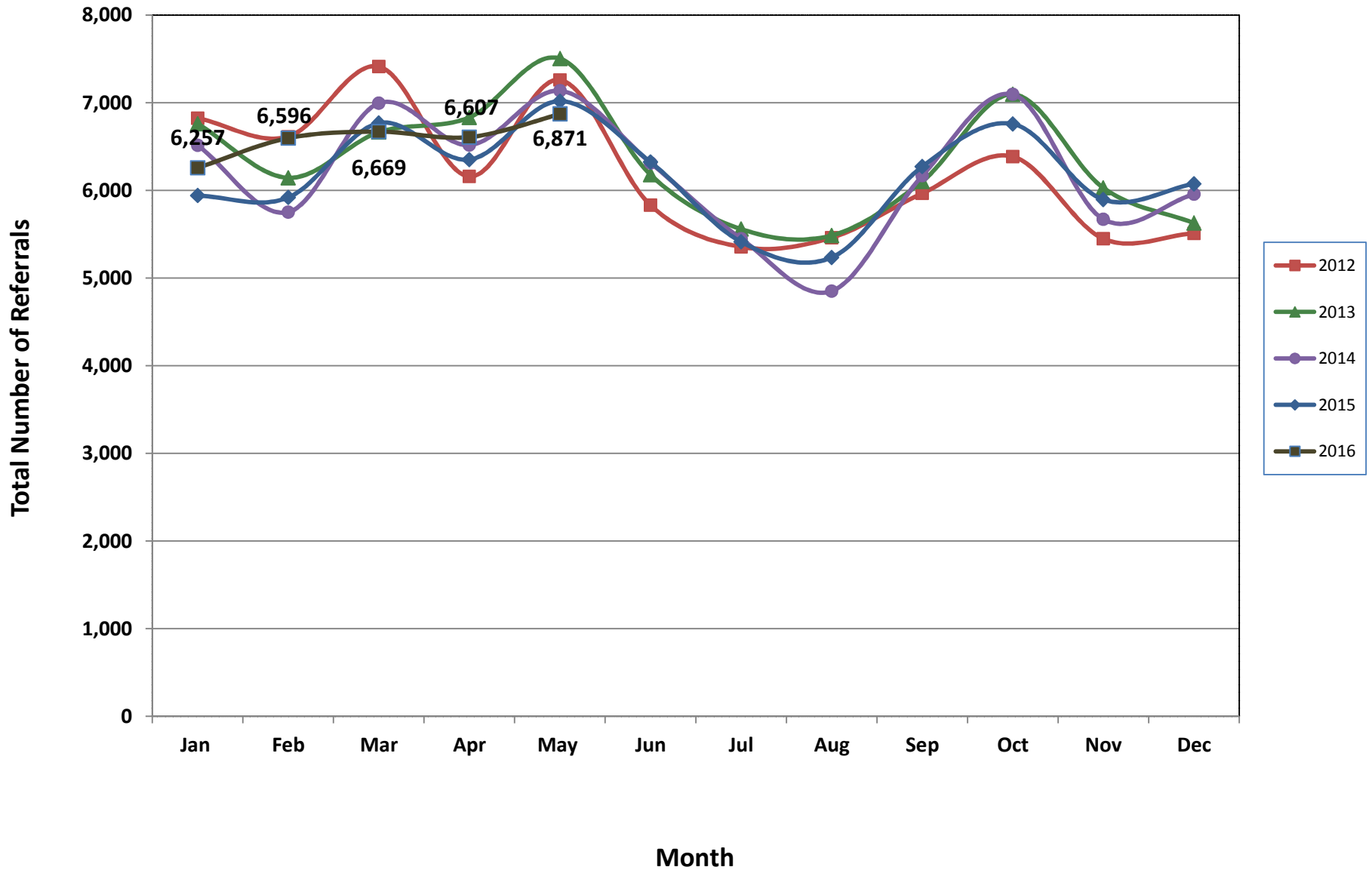
<sup>6</sup> The number of Intakes recorded in NJSpirit, by type of Intake. There is not a one-to-one relationship between an ACD call and an Intake; multiple calls to State Central Registry (SCR) may result in a single Intake, or one call may result in multiple Intakes.

<sup>7</sup> Intake: The process of documenting: a report of alleged abuse or neglect of a child (CPS); a request for services on behalf of a child, or a referral of a child for services (CWS); a call in which the caller provides additional or clarifying information about a current service case or active investigation (RI); informing a caller of, or referring a caller to, services available from other private or public sources (I&R); a call that requires no action by CP&P (NAR); or a response to a simple inquiry (IO).

<sup>8</sup> NJ SPIRIT: NJ Statewide Protection Investigation and Reporting Information Tool case management system



### CP&P Annual Trends in CPS Reports and CWS Referrals



The data contained in this report is considered preliminary and as a result, these figures might be different than the final reported figures. The data is produced for continuous quality improvement.

**Table 2: Assignments to CP&P Offices: CPS Reports and CWS Referrals<sup>1</sup>**

Intake Date <sup>3</sup>		CPS Reports <sup>2</sup>	CWS Referrals <sup>2</sup>	Total Assignments <sup>2</sup>
2012	Jan 2012	5,530	1,294	6,824
	Feb 2012	5,358	1,255	6,613
	Mar 2012	5,985	1,428	7,413
	Apr 2012	4,899	1,259	6,158
	May 2012	5,874	1,385	7,259
	Jun 2012	4,640	1,190	5,830
	Jul 2012	4,254	1,101	5,355
	Aug 2012	4,325	1,135	5,460
	Sep 2012	4,769	1,196	5,965
	Oct 2012	5,178	1,207	6,385
	Nov 2012	4,310	1,138	5,448
	Dec 2012	4,394	1,116	5,510
	<b>Total</b>	<b>59,516</b>	<b>14,704</b>	<b>74,220</b>
2013	Jan 2013	5,464	1,296	6,760
	Feb 2013	4,966	1,177	6,143
	Mar 2013	5,355	1,309	6,664
	Apr 2013	5,430	1,402	6,832
	May 2013	5,993	1,510	7,503
	Jun 2013	4,947	1,230	6,177
	Jul 2013	4,330	1,228	5,558
	Aug 2013	4,330	1,155	5,485
	Sep 2013	4,851	1,251	6,102
	Oct 2013	5,614	1,481	7,095
	Nov 2013	4,694	1,334	6,028
	Dec 2013	4,397	1,229	5,626
	<b>Total</b>	<b>60,371</b>	<b>15,602</b>	<b>75,973</b>
2014	Jan 2014	5,097	1,416	6,513
	Feb 2014	4,457	1,295	5,752
	Mar 2014	5,408	1,586	6,994
	Apr 2014	5,049	1,467	6,516
	May 2014	5,501	1,635	7,136
	Jun 2014	4,796	1,517	6,313
	Jul 2014	4,202	1,247	5,449
	Aug 2014	3,629	1,222	4,851
	Sep 2014	4,668	1,498	6,166
	Oct 2014	5,509	1,586	7,095
	Nov 2014	4,254	1,416	5,670
	Dec 2014	4,509	1,447	5,956
	<b>Total</b>	<b>57,079</b>	<b>17,332</b>	<b>74,411</b>

**Table 2: Assignments to CP&P Offices: CPS Reports and CWS Referrals<sup>1</sup>**

Intake Date <sup>3</sup>		CPS Reports <sup>2</sup>	CWS Referrals <sup>2</sup>	Total Assignments <sup>2</sup>
2015	Jan 2015	4,549	1,391	5,940
	Feb 2015	4,574	1,345	5,919
	Mar 2015	5,187	1,580	6,767
	Apr 2015	4,967	1,384	6,351
	May 2015	5,457	1,561	7,018
	Jun 2015	4,887	1,436	6,323
	Jul 2015	4,140	1,273	5,413
	Aug 2015	3,978	1,256	5,234
	Sep 2015	4,776	1,495	6,271
	Oct 2015	5,139	1,619	6,758
	Nov 2015	4,417	1,477	5,894
	Dec 2015	4,530	1,544	6,074
	<b>Total</b>	<b>56,601</b>	<b>17,361</b>	<b>73,962</b>
2016	Jan 2016	4,686	1,571	6,257
	Feb 2016	4,974	1,622	6,596
	March 2016	5,000	1,669	6,669
	April 2016	5,065	1,542	6,607
	<b>May 2016</b>	<b>5,238</b>	<b>1,633</b>	<b>6,871</b>
	<b>Total</b>	<b>24,963</b>	<b>8,037</b>	<b>33,000</b>
<b>Grand Total</b>		<b>258,530</b>	<b>73,036</b>	<b>331,566</b>

<sup>1</sup>Source of Data: NJ SPIRIT

<sup>2</sup>A CPS Report or a CWS Referral may include multiple children in a family, with one or more allegation or request for services. In these cases, each CPS Report or CWS Referral is counted once - the CPS Report or the CWS Referral is the unit of analysis rather than the child.

<sup>3</sup>Prior to January 2014, the number of CPS Reports and CWS Referrals was based on the type of assignment of the CPS Report or CWS Referral. Beginning in January 2014, the number of CPS Reports and CWS Referrals is based on the number of CPS Reports and CWS Referrals received.

**Table 3: Source of CPS Reports and CWS Referrals**

	Source	May 2015	Jun 2015	Jul 2015	Aug 2015	Sep 2015	Oct 2015	Nov 2015	Dec 2015	Jan 2016	Feb 2016	Mar 2016	Apr 2016	May 2016	
		<b>CPS Reports and CWS Referrals</b>	School Staff	1,868	1,166	183	75	1,123	1,763	1,454	1,596	1,569	1,900	1,690	1,646
Healthcare Provider	812		808	816	832	780	825	766	780	830	852	892	895	<b>823</b>	<b>12%</b>
Law Enforcement	1056		1093	1082	1,010	1,040	1,003	909	910	910	953	1,052	1,030	<b>1,056</b>	<b>15%</b>
Government Agency	370		422	495	449	437	426	376	389	412	394	448	410	<b>419</b>	<b>6%</b>
Parent	578		581	594	592	589	518	451	495	529	504	503	566	<b>597</b>	<b>9%</b>
Relative/Friend/Neighbor	540		546	604	595	592	526	466	455	446	454	424	473	<b>553</b>	<b>8%</b>
Anonymous	802		725	611	622	739	710	609	587	628	612	676	662	<b>777</b>	<b>11%</b>
CP&P	103		125	119	110	123	137	121	112	113	133	155	104	<b>133</b>	<b>2%</b>
Court/Legal	128		148	155	113	115	119	108	108	119	132	154	137	<b>141</b>	<b>2%</b>
Community Group/Individual	266		232	280	297	243	306	240	255	294	274	262	269	<b>236</b>	<b>3%</b>
Facility Staff (incl Correctional Facility)	76		89	92	105	78	83	83	81	91	80	76	88	<b>64</b>	<b>1%</b>
Child (Self)	49		41	44	67	47	34	31	21	41	37	36	46	<b>37</b>	<b>1%</b>
Other	353		330	327	344	348	288	265	274	259	253	286	257	<b>252</b>	<b>4%</b>
Daycare/Babysitter	17		17	11	23	17	20	15	11	16	18	15	24	<b>18</b>	<b>0%</b>
<b>Total</b>		<b>7,018</b>	<b>6,323</b>	<b>5,413</b>	<b>5,234</b>	<b>6,271</b>	<b>6,758</b>	<b>5,894</b>	<b>6,074</b>	<b>6,257</b>	<b>6,596</b>	<b>6,669</b>	<b>6,607</b>	<b>6,871</b>	

**Table 4: Monthly Count of CPS Reports and CWS Referrals Assigned to Counties**

County														Average Number of Assignments Last 13 Months	Apr 16 to May 16 Numerical Difference
	May 2015	Jun 2015	Jul 2015	Aug 2015	Sep 2015	Oct 2015	Nov 2015	Dec 2015	Jan 2016	Feb 2016	Mar 2016	April 2016	May 2016		
Atlantic	275	239	218	227	295	267	227	255	251	284	265	250	291	257	7
Bergen	382	296	284	257	345	411	336	394	333	392	369	321	385	347	-7
Burlington	322	274	263	284	307	303	258	268	275	315	309	321	321	294	6
Camden	551	552	449	438	516	609	461	498	558	551	527	573	608	530	57
Cape May	80	69	78	86	92	112	75	89	83	65	79	94	82	83	17
Cumberland	249	217	173	152	231	215	177	174	195	179	206	219	245	202	66
Essex	779	642	583	565	635	675	660	625	685	701	752	743	717	674	16
Gloucester	244	259	258	255	247	300	245	261	251	252	285	267	233	258	-19
Hudson	546	471	352	325	399	451	342	431	424	450	412	403	481	422	31
Hunterdon	51	47	48	38	58	52	37	39	53	58	46	62	38	48	-20
Mercer	249	262	198	226	263	324	254	252	265	263	276	278	282	261	19
Middlesex	471	423	335	317	400	466	387	435	419	439	479	492	470	426	31
Monmouth	378	346	301	301	364	361	343	308	328	413	361	373	366	349	-47
Morris	246	233	186	175	250	239	216	215	238	228	217	222	247	224	19
Ocean	418	388	376	369	376	383	401	336	403	378	366	365	415	383	37
Passaic	534	412	317	345	422	461	422	449	421	504	510	455	456	439	-48
Salem	105	81	68	53	102	72	89	81	94	67	94	89	82	83	15
Somerset	178	163	158	128	155	153	157	143	141	160	165	152	169	156	9
Sussex	97	112	103	84	89	104	103	95	95	113	105	94	88	99	-25
Union	299	305	228	215	276	304	257	318	299	331	350	336	373	299	42
Warren	117	102	89	94	101	107	81	78	93	87	77	99	106	95	19
<b>County Subtotals</b>	<b>6,571</b>	<b>5,893</b>	<b>5,065</b>	<b>4,934</b>	<b>5,923</b>	<b>6,369</b>	<b>5,528</b>	<b>5,744</b>	<b>5,904</b>	<b>6,230</b>	<b>6,250</b>	<b>6,208</b>	<b>6,455</b>	<b>5,929</b>	<b>225</b>
Central Region IAIU	54	54	24	41	53	52	56	62	44	53	46	59	55	50	2
Metro Region IAIU	70	66	56	30	36	50	48	46	43	60	64	60	68	54	8
Northern Region IAIU	80	65	61	43	45	66	58	44	58	58	66	71	70	60	12
Southern Region IAIU	97	88	63	59	60	83	72	61	79	64	76	90	73	74	9
<b>IAIU Subtotals</b>	<b>301</b>	<b>273</b>	<b>204</b>	<b>173</b>	<b>194</b>	<b>251</b>	<b>234</b>	<b>213</b>	<b>224</b>	<b>235</b>	<b>252</b>	<b>280</b>	<b>266</b>	<b>238</b>	<b>31</b>
<b>Unable to Determine<sup>1</sup></b>	<b>144</b>	<b>153</b>	<b>142</b>	<b>124</b>	<b>153</b>	<b>136</b>	<b>131</b>	<b>114</b>	<b>128</b>	<b>126</b>	<b>165</b>	<b>115</b>	<b>149</b>	<b>137</b>	<b>23</b>
<b>Other Offices</b>	<b>2</b>	<b>4</b>	<b>2</b>	<b>3</b>	<b>1</b>	<b>2</b>	<b>1</b>	<b>3</b>	<b>1</b>	<b>5</b>	<b>2</b>	<b>4</b>	<b>1</b>	<b>2</b>	<b>-4</b>
<b>Grand Total</b>	<b>7,018</b>	<b>6,323</b>	<b>5,413</b>	<b>5,234</b>	<b>6,271</b>	<b>6,758</b>	<b>5,894</b>	<b>6,074</b>	<b>6,257</b>	<b>6,596</b>	<b>6,669</b>	<b>6,607</b>	<b>6,871</b>	<b>6,307</b>	<b>275</b>

<sup>1</sup>CPS Reports or CWS Referrals not assigned to an office through the Assignment Designee, but were assigned to an office for an assessment or investigation.





**Table 5: Monthly Count of CPS Reports and CWS Referrals Assigned to CP&P Local Offices**

County	Local Office	Type of Referral	Month													Total
			May 2015	Jun 2015	Jul 2015	Aug 2015	Sep 2015	Oct 2015	Nov 2015	Dec 2015	Jan 2016	Feb 2016	Mar 2016	Apr 2016	May 2016	
ATLANTIC	Atlantic East	CPS	121	115	100	107	134	115	107	113	110	133	144	97	129	1,525
		CWS	38	24	30	26	35	30	32	36	43	34	27	35	41	431
		<b>Total</b>	<b>159</b>	<b>139</b>	<b>130</b>	<b>133</b>	<b>169</b>	<b>145</b>	<b>139</b>	<b>149</b>	<b>153</b>	<b>167</b>	<b>171</b>	<b>132</b>	<b>170</b>	<b>1,956</b>
	Atlantic West	CPS	96	81	72	77	94	101	70	82	70	88	71	95	94	1,091
		CWS	20	19	16	17	32	21	18	24	28	29	23	23	27	297
		<b>Total</b>	<b>116</b>	<b>100</b>	<b>88</b>	<b>94</b>	<b>126</b>	<b>122</b>	<b>88</b>	<b>106</b>	<b>98</b>	<b>117</b>	<b>94</b>	<b>118</b>	<b>121</b>	<b>1,388</b>
	County Totals	CPS	217	196	172	184	228	216	177	195	180	221	215	192	223	2,616
		CWS	58	43	46	43	67	51	50	60	71	63	50	58	68	728
		<b>Total</b>	<b>275</b>	<b>239</b>	<b>218</b>	<b>227</b>	<b>295</b>	<b>267</b>	<b>227</b>	<b>255</b>	<b>251</b>	<b>284</b>	<b>265</b>	<b>250</b>	<b>291</b>	<b>3,344</b>
BERGEN	Bergen Central	CPS	123	102	83	72	98	117	98	119	128	107	121	101	134	1,403
		CWS	34	32	29	29	36	50	37	41	39	51	48	32	40	498
		<b>Total</b>	<b>157</b>	<b>134</b>	<b>112</b>	<b>101</b>	<b>134</b>	<b>167</b>	<b>135</b>	<b>160</b>	<b>167</b>	<b>158</b>	<b>169</b>	<b>133</b>	<b>174</b>	<b>1,901</b>
	Bergen South	CPS	175	120	127	106	157	177	144	164	121	174	150	136	162	1,913
		CWS	50	42	45	50	54	67	57	70	45	60	50	52	49	691
		<b>Total</b>	<b>225</b>	<b>162</b>	<b>172</b>	<b>156</b>	<b>211</b>	<b>244</b>	<b>201</b>	<b>234</b>	<b>166</b>	<b>234</b>	<b>200</b>	<b>188</b>	<b>211</b>	<b>2,604</b>
	County Totals	CPS	298	222	210	178	255	294	242	283	249	281	271	237	296	3,316
		CWS	84	74	74	79	90	117	94	111	84	111	98	84	89	1,189
		<b>Total</b>	<b>382</b>	<b>296</b>	<b>284</b>	<b>257</b>	<b>345</b>	<b>411</b>	<b>336</b>	<b>394</b>	<b>333</b>	<b>392</b>	<b>369</b>	<b>321</b>	<b>385</b>	<b>4,505</b>
BURLINGTON	Burlington East	CPS	125	99	97	110	110	121	93	118	117	127	105	131	128	1,481
		CWS	37	26	38	36	36	31	28	20	32	39	38	32	39	432
		<b>Total</b>	<b>162</b>	<b>125</b>	<b>135</b>	<b>146</b>	<b>146</b>	<b>152</b>	<b>121</b>	<b>138</b>	<b>149</b>	<b>166</b>	<b>143</b>	<b>163</b>	<b>167</b>	<b>1,913</b>
	Burlington West	CPS	122	115	96	97	120	119	107	101	92	109	124	130	117	1,449
		CWS	38	34	32	41	41	32	30	29	34	40	42	28	37	458
		<b>Total</b>	<b>160</b>	<b>149</b>	<b>128</b>	<b>138</b>	<b>161</b>	<b>151</b>	<b>137</b>	<b>130</b>	<b>126</b>	<b>149</b>	<b>166</b>	<b>158</b>	<b>154</b>	<b>1,907</b>
	County Totals	CPS	247	214	193	207	230	240	200	219	209	236	229	261	245	2,930
		CWS	75	60	70	77	77	63	58	49	66	79	80	60	76	890
		<b>Total</b>	<b>322</b>	<b>274</b>	<b>263</b>	<b>284</b>	<b>307</b>	<b>303</b>	<b>258</b>	<b>268</b>	<b>275</b>	<b>315</b>	<b>309</b>	<b>321</b>	<b>321</b>	<b>3,820</b>
CAMDEN	Camden Central	CPS	122	121	105	93	116	148	101	104	127	119	104	136	123	1,519
		CWS	29	27	29	25	36	38	34	24	34	34	44	36	38	428
		<b>Total</b>	<b>151</b>	<b>148</b>	<b>134</b>	<b>118</b>	<b>152</b>	<b>186</b>	<b>135</b>	<b>128</b>	<b>161</b>	<b>153</b>	<b>148</b>	<b>172</b>	<b>161</b>	<b>1,947</b>
	Camden East	CPS	119	125	81	105	109	123	100	106	108	106	104	114	123	1,423
		CWS	30	30	30	28	21	21	32	27	28	27	16	27	33	350
		<b>Total</b>	<b>149</b>	<b>155</b>	<b>111</b>	<b>133</b>	<b>130</b>	<b>144</b>	<b>132</b>	<b>133</b>	<b>136</b>	<b>133</b>	<b>120</b>	<b>141</b>	<b>156</b>	<b>1,773</b>
	Camden North	CPS	101	116	82	77	95	120	83	108	104	105	102	132	115	1,340
		CWS	33	36	26	24	33	40	17	34	40	45	46	27	47	448
		<b>Total</b>	<b>134</b>	<b>152</b>	<b>108</b>	<b>101</b>	<b>128</b>	<b>160</b>	<b>100</b>	<b>142</b>	<b>144</b>	<b>150</b>	<b>148</b>	<b>159</b>	<b>162</b>	<b>1,788</b>
	Camden South	CPS	92	73	76	66	83	88	77	75	85	86	77	79	97	1,054
		CWS	25	24	20	20	23	31	17	20	32	29	34	22	32	329
		<b>Total</b>	<b>117</b>	<b>97</b>	<b>96</b>	<b>86</b>	<b>106</b>	<b>119</b>	<b>94</b>	<b>95</b>	<b>117</b>	<b>115</b>	<b>111</b>	<b>101</b>	<b>129</b>	<b>1,383</b>
	County Totals	CPS	434	435	344	341	403	479	361	393	424	416	387	461	458	5,336
		CWS	117	117	105	97	113	130	100	105	134	135	140	112	150	1,555
		<b>Total</b>	<b>551</b>	<b>552</b>	<b>449</b>	<b>438</b>	<b>516</b>	<b>609</b>	<b>461</b>	<b>498</b>	<b>558</b>	<b>551</b>	<b>527</b>	<b>573</b>	<b>608</b>	<b>6,891</b>
CAPE MAY	Cape May	CPS	66	57	63	69	72	87	51	64	61	51	57	72	68	838
		CWS	14	12	15	17	20	25	24	25	22	14	22	22	14	246
		<b>Total</b>	<b>80</b>	<b>69</b>	<b>78</b>	<b>86</b>	<b>92</b>	<b>112</b>	<b>75</b>	<b>89</b>	<b>83</b>	<b>65</b>	<b>79</b>	<b>94</b>	<b>82</b>	<b>1,084</b>
	County Totals	CPS	66	57	63	69	72	87	51	64	61	51	57	72	68	838
		<b>Total</b>	<b>80</b>	<b>69</b>	<b>78</b>	<b>86</b>	<b>92</b>	<b>112</b>	<b>75</b>	<b>89</b>	<b>83</b>	<b>65</b>	<b>79</b>	<b>94</b>	<b>82</b>	<b>1,084</b>
CUMBERLAND	Cumberland East	CPS	70	66	33	36	61	42	39	46	59	52	48	64	81	697
		CWS	25	19	6	9	18	26	18	14	12	13	16	18	14	208
		<b>Total</b>	<b>95</b>	<b>85</b>	<b>39</b>	<b>45</b>	<b>79</b>	<b>68</b>	<b>57</b>	<b>60</b>	<b>71</b>	<b>65</b>	<b>64</b>	<b>82</b>	<b>95</b>	<b>905</b>
	Cumberland West	CPS	123	99	108	81	123	116	88	83	99	96	116	102	115	1,349
		CWS	31	33	26	26	29	31	32	31	25	18	26	35	35	378
		<b>Total</b>	<b>154</b>	<b>132</b>	<b>134</b>	<b>107</b>	<b>152</b>	<b>147</b>	<b>120</b>	<b>114</b>	<b>124</b>	<b>114</b>	<b>142</b>	<b>137</b>	<b>150</b>	<b>1,727</b>
	County Totals	CPS	193	165	141	117	184	158	127	129	158	148	164	166	196	2,046
		CWS	56	52	32	35	47	57	50	45	37	31	42	53	49	586
		<b>Total</b>	<b>249</b>	<b>217</b>	<b>173</b>	<b>152</b>	<b>231</b>	<b>215</b>	<b>177</b>	<b>174</b>	<b>195</b>	<b>179</b>	<b>206</b>	<b>219</b>	<b>245</b>	<b>2,632</b>

Data in this report is preliminary and may differ from any final report. This report is produced to ensure continuous quality improvement throughout DCF.

**Table 5: Monthly Count of CPS Reports and CWS Referrals Assigned to CP&P Local Offices**

County	Local Office	Type of Referral	Month												Total	
			May 2015	Jun 2015	Jul 2015	Aug 2015	Sep 2015	Oct 2015	Nov 2015	Dec 2015	Jan 2016	Feb 2016	Mar 2016	Apr 2016		May 2016
ESSEX	Essex Central	CPS	118	81	76	85	80	105	87	72	82	85	108	101	108	1,188
		CWS	36	27	39	41	26	42	37	39	43	37	42	38	41	488
		<b>Total</b>	<b>154</b>	<b>108</b>	<b>115</b>	<b>126</b>	<b>106</b>	<b>147</b>	<b>124</b>	<b>111</b>	<b>125</b>	<b>122</b>	<b>150</b>	<b>139</b>	<b>149</b>	<b>1,676</b>
	Essex North	CPS	75	67	42	40	53	53	54	66	53	73	75	48	59	758
		CWS	20	23	18	17	22	23	21	30	29	25	35	21	19	303
		<b>Total</b>	<b>95</b>	<b>90</b>	<b>60</b>	<b>57</b>	<b>75</b>	<b>76</b>	<b>75</b>	<b>96</b>	<b>82</b>	<b>98</b>	<b>110</b>	<b>69</b>	<b>78</b>	<b>1,061</b>
	Essex South	CPS	71	51	49	49	66	57	58	56	63	79	66	56	60	781
		CWS	16	20	19	16	25	23	16	17	27	22	26	26	24	277
		<b>Total</b>	<b>87</b>	<b>71</b>	<b>68</b>	<b>65</b>	<b>91</b>	<b>80</b>	<b>74</b>	<b>73</b>	<b>90</b>	<b>101</b>	<b>92</b>	<b>82</b>	<b>84</b>	<b>1,058</b>
	Newark Center City	CPS	106	72	61	64	89	83	82	78	91	95	87	110	97	1,115
		CWS	40	27	23	29	29	35	36	39	26	30	42	45	34	435
		<b>Total</b>	<b>146</b>	<b>99</b>	<b>84</b>	<b>93</b>	<b>118</b>	<b>118</b>	<b>118</b>	<b>117</b>	<b>117</b>	<b>125</b>	<b>129</b>	<b>155</b>	<b>131</b>	<b>1,550</b>
	Newark Northeast	CPS	94	108	81	69	101	83	81	65	92	89	99	115	93	1,170
		CWS	34	28	31	26	25	37	34	33	39	30	36	27	47	427
		<b>Total</b>	<b>128</b>	<b>136</b>	<b>112</b>	<b>95</b>	<b>126</b>	<b>120</b>	<b>115</b>	<b>98</b>	<b>131</b>	<b>119</b>	<b>135</b>	<b>142</b>	<b>140</b>	<b>1,597</b>
	Newark South	CPS	127	102	113	94	88	100	106	92	107	96	104	121	87	1,337
		CWS	42	36	31	35	31	34	48	38	33	40	32	35	48	483
		<b>Total</b>	<b>169</b>	<b>138</b>	<b>144</b>	<b>129</b>	<b>119</b>	<b>134</b>	<b>154</b>	<b>130</b>	<b>140</b>	<b>136</b>	<b>136</b>	<b>156</b>	<b>135</b>	<b>1,820</b>
County Totals	CPS	591	481	422	401	477	481	468	429	488	517	539	551	504	6,349	
	CWS	188	161	161	164	158	194	192	196	197	184	213	192	213	2,413	
	<b>Total</b>	<b>779</b>	<b>642</b>	<b>583</b>	<b>565</b>	<b>635</b>	<b>675</b>	<b>660</b>	<b>625</b>	<b>685</b>	<b>701</b>	<b>752</b>	<b>743</b>	<b>717</b>	<b>8,762</b>	
GLOUCESTER	Gloucester East	CPS	88	85	85	98	98	109	91	101	97	93	112	99	84	1,240
		CWS	18	25	36	34	24	26	17	25	35	24	38	31	26	359
		<b>Total</b>	<b>106</b>	<b>110</b>	<b>121</b>	<b>132</b>	<b>122</b>	<b>135</b>	<b>108</b>	<b>126</b>	<b>132</b>	<b>117</b>	<b>150</b>	<b>130</b>	<b>110</b>	<b>1,599</b>
	Gloucester West	CPS	114	121	118	93	94	133	103	109	91	102	106	115	87	1,386
		CWS	24	28	19	30	31	32	34	26	28	33	29	22	36	372
		<b>Total</b>	<b>138</b>	<b>149</b>	<b>137</b>	<b>123</b>	<b>125</b>	<b>165</b>	<b>137</b>	<b>135</b>	<b>119</b>	<b>135</b>	<b>135</b>	<b>137</b>	<b>123</b>	<b>1,758</b>
	County Totals	CPS	202	206	203	191	192	242	194	210	188	195	218	214	171	2,626
		CWS	42	53	55	64	55	58	51	51	63	57	67	53	62	731
		<b>Total</b>	<b>244</b>	<b>259</b>	<b>258</b>	<b>255</b>	<b>247</b>	<b>300</b>	<b>245</b>	<b>261</b>	<b>251</b>	<b>252</b>	<b>285</b>	<b>267</b>	<b>233</b>	<b>3,357</b>
HUDSON	Hudson Central	CPS	112	88	71	60	62	72	59	79	75	89	74	67	83	991
		CWS	22	30	24	30	25	26	16	25	23	28	25	31	23	328
		<b>Total</b>	<b>134</b>	<b>118</b>	<b>95</b>	<b>90</b>	<b>87</b>	<b>98</b>	<b>75</b>	<b>104</b>	<b>98</b>	<b>117</b>	<b>99</b>	<b>98</b>	<b>106</b>	<b>1,319</b>
	Hudson North	CPS	107	96	60	54	91	86	74	87	95	77	96	88	101	1,112
		CWS	28	27	18	16	22	31	29	30	37	35	34	27	31	365
		<b>Total</b>	<b>135</b>	<b>123</b>	<b>78</b>	<b>70</b>	<b>113</b>	<b>117</b>	<b>103</b>	<b>117</b>	<b>132</b>	<b>112</b>	<b>130</b>	<b>115</b>	<b>132</b>	<b>1,477</b>
	Hudson South	CPS	103	93	79	71	66	93	61	93	60	81	60	68	86	1,014
		CWS	46	29	23	19	31	28	22	28	20	25	23	21	45	360
		<b>Total</b>	<b>149</b>	<b>122</b>	<b>102</b>	<b>90</b>	<b>97</b>	<b>121</b>	<b>83</b>	<b>121</b>	<b>80</b>	<b>106</b>	<b>83</b>	<b>89</b>	<b>131</b>	<b>1,374</b>
	Hudson West	CPS	103	77	57	55	77	82	60	74	87	90	71	79	87	999
		CWS	25	31	20	20	25	33	21	15	27	25	29	22	25	318
		<b>Total</b>	<b>128</b>	<b>108</b>	<b>77</b>	<b>75</b>	<b>102</b>	<b>115</b>	<b>81</b>	<b>89</b>	<b>114</b>	<b>115</b>	<b>100</b>	<b>101</b>	<b>112</b>	<b>1,317</b>
County Totals	CPS	425	354	267	240	296	333	254	333	317	337	301	302	357	4,116	
	CWS	121	117	85	85	103	118	88	98	107	113	111	101	124	1,371	
	<b>Total</b>	<b>546</b>	<b>471</b>	<b>352</b>	<b>325</b>	<b>399</b>	<b>451</b>	<b>342</b>	<b>431</b>	<b>424</b>	<b>450</b>	<b>412</b>	<b>403</b>	<b>481</b>	<b>5,487</b>	
HUNTERDON	Hunterdon	CPS	32	32	35	27	41	40	27	27	35	41	33	49	29	448
		CWS	19	15	13	11	17	12	10	12	18	17	13	13	9	179
		<b>Total</b>	<b>51</b>	<b>47</b>	<b>48</b>	<b>38</b>	<b>58</b>	<b>52</b>	<b>37</b>	<b>39</b>	<b>53</b>	<b>58</b>	<b>46</b>	<b>62</b>	<b>38</b>	<b>627</b>
	County Totals	CPS	32	32	35	27	41	40	27	27	35	41	33	49	29	448
		CWS	19	15	13	11	17	12	10	12	18	17	13	13	9	179
<b>Total</b>	<b>51</b>	<b>47</b>	<b>48</b>	<b>38</b>	<b>58</b>	<b>52</b>	<b>37</b>	<b>39</b>	<b>53</b>	<b>58</b>	<b>46</b>	<b>62</b>	<b>38</b>	<b>627</b>		
MERCER	Mercer North	CPS	94	92	70	82	87	115	79	89	91	98	100	95	93	1,185
		CWS	27	25	29	18	33	40	46	33	37	29	33	23	27	400
		<b>Total</b>	<b>121</b>	<b>117</b>	<b>99</b>	<b>100</b>	<b>120</b>	<b>155</b>	<b>125</b>	<b>122</b>	<b>128</b>	<b>127</b>	<b>133</b>	<b>118</b>	<b>120</b>	<b>1,585</b>
	Mercer South	CPS	96	103	76	107	107	125	98	100	102	108	102	121	124	1,369
		CWS	32	42	23	19	36	44	31	30	35	28	41	39	38	438
		<b>Total</b>	<b>128</b>	<b>145</b>	<b>99</b>	<b>126</b>	<b>143</b>	<b>169</b>	<b>129</b>	<b>130</b>	<b>137</b>	<b>136</b>	<b>143</b>	<b>160</b>	<b>162</b>	<b>1,807</b>
	County Totals	CPS	190	195	146	189	194	240	177	189	193	206	202	216	217	2,554
CWS		59	67	52	37	69	84	77	63	72	57	74	62	65	838	
<b>Total</b>	<b>249</b>	<b>262</b>	<b>198</b>	<b>226</b>	<b>263</b>	<b>324</b>	<b>254</b>	<b>252</b>	<b>265</b>	<b>263</b>	<b>276</b>	<b>278</b>	<b>282</b>	<b>3,392</b>		



**Table 5: Monthly Count of CPS Reports and CWS Referrals Assigned to CP&P Local Offices**

County	Local Office	Type of Referral	Month												Total	
			May 2015	Jun 2015	Jul 2015	Aug 2015	Sep 2015	Oct 2015	Nov 2015	Dec 2015	Jan 2016	Feb 2016	Mar 2016	Apr 2016		May 2016
MIDDLESEX	Middlesex Central	CPS	89	65	52	56	86	86	66	91	70	78	77	72	97	985
		CWS	27	17	25	18	28	27	20	27	25	23	25	32	31	325
		<b>Total</b>	<b>116</b>	<b>82</b>	<b>77</b>	<b>74</b>	<b>114</b>	<b>113</b>	<b>86</b>	<b>118</b>	<b>95</b>	<b>101</b>	<b>102</b>	<b>104</b>	<b>128</b>	<b>1,310</b>
	Middlesex Coastal	CPS	151	128	101	105	110	132	110	119	104	129	152	141	136	1,618
		CWS	37	44	43	24	33	35	38	33	41	46	39	39	29	481
		<b>Total</b>	<b>188</b>	<b>172</b>	<b>144</b>	<b>129</b>	<b>143</b>	<b>167</b>	<b>148</b>	<b>152</b>	<b>145</b>	<b>175</b>	<b>191</b>	<b>180</b>	<b>165</b>	<b>2,099</b>
	Middlesex West	CPS	138	132	94	84	105	132	118	114	132	131	133	151	135	1,599
		CWS	29	37	20	30	38	54	35	51	47	32	53	57	42	525
		<b>Total</b>	<b>167</b>	<b>169</b>	<b>114</b>	<b>114</b>	<b>143</b>	<b>186</b>	<b>153</b>	<b>165</b>	<b>179</b>	<b>163</b>	<b>186</b>	<b>208</b>	<b>177</b>	<b>2,124</b>
	County Totals	CPS	378	325	247	245	301	350	294	324	306	338	362	364	368	4,202
CWS		93	98	88	72	99	116	93	111	113	101	117	128	102	1,331	
<b>Total</b>		<b>471</b>	<b>423</b>	<b>335</b>	<b>317</b>	<b>400</b>	<b>466</b>	<b>387</b>	<b>435</b>	<b>419</b>	<b>439</b>	<b>479</b>	<b>492</b>	<b>470</b>	<b>5,533</b>	
MONMOUTH	Monmouth North	CPS	164	152	129	119	159	160	134	135	135	184	145	150	165	1,931
		CWS	43	39	37	33	58	51	50	47	35	44	38	47	40	562
		<b>Total</b>	<b>207</b>	<b>191</b>	<b>166</b>	<b>152</b>	<b>217</b>	<b>211</b>	<b>184</b>	<b>182</b>	<b>170</b>	<b>228</b>	<b>183</b>	<b>197</b>	<b>205</b>	<b>2,493</b>
	Monmouth South	CPS	128	125	108	111	118	118	118	95	115	130	137	124	121	1,548
		CWS	43	30	27	38	29	32	41	31	43	55	41	52	40	502
		<b>Total</b>	<b>171</b>	<b>155</b>	<b>135</b>	<b>149</b>	<b>147</b>	<b>150</b>	<b>159</b>	<b>126</b>	<b>158</b>	<b>185</b>	<b>178</b>	<b>176</b>	<b>161</b>	<b>2,050</b>
	County Totals	CPS	292	277	237	230	277	278	252	230	250	314	282	274	286	3,479
		CWS	86	69	64	71	87	83	91	78	78	99	79	99	80	1,064
		<b>Total</b>	<b>378</b>	<b>346</b>	<b>301</b>	<b>301</b>	<b>364</b>	<b>361</b>	<b>343</b>	<b>308</b>	<b>328</b>	<b>413</b>	<b>361</b>	<b>373</b>	<b>366</b>	<b>4,543</b>
	MORRIS	Morris East	CPS	74	74	61	59	85	95	68	47	73	77	81	63	74
CWS			23	22	27	20	29	26	27	27	24	34	27	23	35	344
<b>Total</b>			<b>97</b>	<b>96</b>	<b>88</b>	<b>79</b>	<b>114</b>	<b>121</b>	<b>95</b>	<b>74</b>	<b>97</b>	<b>111</b>	<b>108</b>	<b>86</b>	<b>109</b>	<b>1,275</b>
Morris West		CPS	102	92	69	74	100	87	90	98	114	83	73	98	102	1,182
		CWS	47	45	29	22	36	31	31	43	27	34	36	38	36	455
		<b>Total</b>	<b>149</b>	<b>137</b>	<b>98</b>	<b>96</b>	<b>136</b>	<b>118</b>	<b>121</b>	<b>141</b>	<b>141</b>	<b>117</b>	<b>109</b>	<b>136</b>	<b>138</b>	<b>1,637</b>
County Totals		CPS	176	166	130	133	185	182	158	145	187	160	154	161	176	2,113
		CWS	70	67	56	42	65	57	58	70	51	68	63	61	71	799
		<b>Total</b>	<b>246</b>	<b>233</b>	<b>186</b>	<b>175</b>	<b>250</b>	<b>239</b>	<b>216</b>	<b>215</b>	<b>238</b>	<b>228</b>	<b>217</b>	<b>222</b>	<b>247</b>	<b>2,912</b>
OCEAN		Ocean North	CPS	144	145	120	119	118	145	161	125	142	146	150	157	180
	CWS		52	38	34	39	43	32	57	43	63	50	43	42	46	582
	<b>Total</b>		<b>196</b>	<b>183</b>	<b>154</b>	<b>158</b>	<b>161</b>	<b>177</b>	<b>218</b>	<b>168</b>	<b>205</b>	<b>196</b>	<b>193</b>	<b>199</b>	<b>226</b>	<b>2,434</b>
	Ocean South	CPS	172	167	178	171	170	162	135	130	151	137	130	127	145	1,975
		CWS	50	38	44	40	45	44	48	38	47	45	43	39	44	565
		<b>Total</b>	<b>222</b>	<b>205</b>	<b>222</b>	<b>211</b>	<b>215</b>	<b>206</b>	<b>183</b>	<b>168</b>	<b>198</b>	<b>182</b>	<b>173</b>	<b>166</b>	<b>189</b>	<b>2,540</b>
	County Totals	CPS	316	312	298	290	288	307	296	255	293	283	280	284	325	3,827
		CWS	102	76	78	79	88	76	105	81	110	95	86	81	90	1,147
		<b>Total</b>	<b>418</b>	<b>388</b>	<b>376</b>	<b>369</b>	<b>376</b>	<b>383</b>	<b>401</b>	<b>336</b>	<b>403</b>	<b>378</b>	<b>366</b>	<b>365</b>	<b>415</b>	<b>4,974</b>
	PASSAIC	Passaic Central	CPS	221	152	118	133	159	161	163	178	144	202	169	166	175
CWS			67	58	52	55	55	91	66	68	68	89	89	66	82	906
<b>Total</b>			<b>288</b>	<b>210</b>	<b>170</b>	<b>188</b>	<b>214</b>	<b>252</b>	<b>229</b>	<b>246</b>	<b>212</b>	<b>291</b>	<b>258</b>	<b>232</b>	<b>257</b>	<b>3,047</b>
Passaic North		CPS	190	151	116	123	142	153	141	137	152	159	170	162	151	1,947
		CWS	56	51	31	34	66	56	52	66	57	54	82	61	48	714
		<b>Total</b>	<b>246</b>	<b>202</b>	<b>147</b>	<b>157</b>	<b>208</b>	<b>209</b>	<b>193</b>	<b>203</b>	<b>209</b>	<b>213</b>	<b>252</b>	<b>223</b>	<b>199</b>	<b>2,661</b>
County Totals		CPS	411	303	234	256	301	314	304	315	296	361	339	328	326	4,088
		CWS	123	109	83	89	121	147	118	134	125	143	171	127	130	1,620
		<b>Total</b>	<b>534</b>	<b>412</b>	<b>317</b>	<b>345</b>	<b>422</b>	<b>461</b>	<b>422</b>	<b>449</b>	<b>421</b>	<b>504</b>	<b>510</b>	<b>455</b>	<b>456</b>	<b>5,708</b>
SALEM		Salem	CPS	78	66	51	35	77	47	75	58	72	43	78	61	64
	CWS		27	15	17	18	25	25	14	23	22	24	16	28	18	272
	<b>Total</b>		<b>105</b>	<b>81</b>	<b>68</b>	<b>53</b>	<b>102</b>	<b>72</b>	<b>89</b>	<b>81</b>	<b>94</b>	<b>67</b>	<b>94</b>	<b>89</b>	<b>82</b>	<b>1,077</b>
	County Totals	CPS	78	66	51	35	77	47	75	58	72	43	78	61	64	805
		CWS	27	15	17	18	25	25	14	23	22	24	16	28	18	272
		<b>Total</b>	<b>105</b>	<b>81</b>	<b>68</b>	<b>53</b>	<b>102</b>	<b>72</b>	<b>89</b>	<b>81</b>	<b>94</b>	<b>67</b>	<b>94</b>	<b>89</b>	<b>82</b>	<b>1,077</b>
SOMERSET	Somerset	CPS	131	122	126	88	120	121	121	104	104	120	124	115	136	1,532
		CWS	47	41	32	40	35	32	36	39	37	40	41	37	33	490
		<b>Total</b>	<b>178</b>	<b>163</b>	<b>158</b>	<b>128</b>	<b>155</b>	<b>153</b>	<b>157</b>	<b>143</b>	<b>141</b>	<b>160</b>	<b>165</b>	<b>152</b>	<b>169</b>	<b>2,022</b>
	County Totals	CPS	131	122	126	88	120	121	121	104	104	120	124	115	136	1,532
		CWS	47	41	32	40	35	32	36	39	37	40	41	37	33	490
<b>Total</b>	<b>178</b>	<b>163</b>	<b>158</b>	<b>128</b>	<b>155</b>	<b>153</b>	<b>157</b>	<b>143</b>	<b>141</b>	<b>160</b>	<b>165</b>	<b>152</b>	<b>169</b>	<b>2,022</b>		

Data in this report is preliminary and may differ from any final report. This report is produced to ensure continuous quality improvement throughout DCF.



**Table 5: Monthly Count of CPS Reports and CWS Referrals Assigned to CP&P Local Offices**

County	Local Office	Type of Referral	Month												Total		
			May 2015	Jun 2015	Jul 2015	Aug 2015	Sep 2015	Oct 2015	Nov 2015	Dec 2015	Jan 2016	Feb 2016	Mar 2016	Apr 2016		May 2016	
SUSSEX	Sussex	CPS	74	77	86	71	73	83	72	68	82	83	76	77	71	993	
		CWS	23	35	17	13	16	21	31	27	13	30	29	17	17	289	
		<b>Total</b>	<b>97</b>	<b>112</b>	<b>103</b>	<b>84</b>	<b>89</b>	<b>104</b>	<b>103</b>	<b>95</b>	<b>95</b>	<b>113</b>	<b>105</b>	<b>94</b>	<b>88</b>	<b>1,282</b>	
	County Totals	CPS	74	77	86	71	73	83	72	68	82	83	76	77	71	993	
		CWS	23	35	17	13	16	21	31	27	13	30	29	17	17	289	
UNION	Union Central	CPS	85	83	56	52	65	67	64	71	74	85	78	89	105	974	
		CWS	19	20	25	26	24	24	14	27	32	29	30	24	23	317	
		<b>Total</b>	<b>104</b>	<b>103</b>	<b>81</b>	<b>78</b>	<b>89</b>	<b>91</b>	<b>78</b>	<b>98</b>	<b>106</b>	<b>114</b>	<b>108</b>	<b>113</b>	<b>128</b>	<b>1,291</b>	
	Union East	CPS	69	80	51	49	67	74	68	91	75	78	99	99	100	1,000	
		CWS	33	32	8	23	27	35	26	34	25	30	25	28	25	351	
		<b>Total</b>	<b>102</b>	<b>112</b>	<b>59</b>	<b>72</b>	<b>94</b>	<b>109</b>	<b>94</b>	<b>125</b>	<b>100</b>	<b>108</b>	<b>124</b>	<b>127</b>	<b>125</b>	<b>1,351</b>	
	Union West	CPS	71	62	59	50	70	77	58	65	65	79	84	73	87	900	
		CWS	22	28	29	15	23	27	27	30	28	30	34	23	33	349	
		<b>Total</b>	<b>93</b>	<b>90</b>	<b>88</b>	<b>65</b>	<b>93</b>	<b>104</b>	<b>85</b>	<b>95</b>	<b>93</b>	<b>109</b>	<b>118</b>	<b>96</b>	<b>120</b>	<b>1,249</b>	
	County Totals	CPS	225	225	166	151	202	218	190	227	214	242	261	261	292	2,874	
		CWS	74	80	62	64	74	86	67	91	85	89	89	75	81	1,017	
		<b>Total</b>	<b>299</b>	<b>305</b>	<b>228</b>	<b>215</b>	<b>276</b>	<b>304</b>	<b>257</b>	<b>318</b>	<b>299</b>	<b>331</b>	<b>350</b>	<b>336</b>	<b>373</b>	<b>3,891</b>	
	WARREN	Warren	CPS	84	78	71	71	81	87	58	55	72	64	60	68	74	923
			CWS	33	24	18	23	20	20	23	23	21	23	17	31	32	308
			<b>Total</b>	<b>117</b>	<b>102</b>	<b>89</b>	<b>94</b>	<b>101</b>	<b>107</b>	<b>81</b>	<b>78</b>	<b>93</b>	<b>87</b>	<b>77</b>	<b>99</b>	<b>106</b>	<b>1,231</b>
County Totals		CPS	84	78	71	71	81	87	58	55	72	64	60	68	74	923	
		CWS	33	24	18	23	20	20	23	23	21	23	17	31	32	308	
<b>Total</b>	<b>117</b>	<b>102</b>	<b>89</b>	<b>94</b>	<b>101</b>	<b>107</b>	<b>81</b>	<b>78</b>	<b>93</b>	<b>87</b>	<b>77</b>	<b>99</b>	<b>106</b>	<b>1,231</b>			
<b>County CPS Referral Total</b>		CPS	5,060	4,508	3,842	3,714	4,477	4,797	4,098	4,252	4,378	4,657	4,632	4,714	4,882	58,011	
<b>County CWS Referral Total</b>		CWS	1,511	1,385	1,223	1,220	1,446	1,572	1,430	1,492	1,526	1,573	1,618	1,494	1,573	19,063	
<b>County Referral Total</b>		<b>Total</b>	<b>6,571</b>	<b>5,893</b>	<b>5,065</b>	<b>4,934</b>	<b>5,923</b>	<b>6,369</b>	<b>5,528</b>	<b>5,744</b>	<b>5,904</b>	<b>6,230</b>	<b>6,250</b>	<b>6,208</b>	<b>6,455</b>	<b>77,074</b>	
Central Region IAIU	CPS	54	54	63	41	53	52	56	62	44	53	46	59	55	692		
	CWS	0	0	0	0	0	0	0	0	0	0	0	0	0	0		
	<b>Total</b>	<b>54</b>	<b>54</b>	<b>63</b>	<b>41</b>	<b>53</b>	<b>52</b>	<b>56</b>	<b>62</b>	<b>44</b>	<b>53</b>	<b>46</b>	<b>59</b>	<b>55</b>	<b>692</b>		
Metro Region IAIU	CPS	70	66	24	30	36	50	48	46	43	60	64	60	68	665		
	CWS	0	0	0	0	0	0	0	0	0	0	0	0	0	0		
	<b>Total</b>	<b>70</b>	<b>66</b>	<b>24</b>	<b>30</b>	<b>36</b>	<b>50</b>	<b>48</b>	<b>46</b>	<b>43</b>	<b>60</b>	<b>64</b>	<b>60</b>	<b>68</b>	<b>665</b>		
Northern Region IAIU	CPS	80	65	56	43	45	66	58	44	58	58	66	71	70	780		
	CWS	0	0	0	0	0	0	0	0	0	0	0	0	0	0		
	<b>Total</b>	<b>80</b>	<b>65</b>	<b>56</b>	<b>43</b>	<b>45</b>	<b>66</b>	<b>58</b>	<b>44</b>	<b>58</b>	<b>58</b>	<b>66</b>	<b>71</b>	<b>70</b>	<b>780</b>		
Southern Region IAIU	CPS	97	88	61	59	60	83	72	61	79	64	76	90	73	963		
	CWS	0	0	0	0	0	0	0	0	0	0	0	0	0	0		
	<b>Total</b>	<b>97</b>	<b>88</b>	<b>61</b>	<b>59</b>	<b>60</b>	<b>83</b>	<b>72</b>	<b>61</b>	<b>79</b>	<b>64</b>	<b>76</b>	<b>90</b>	<b>73</b>	<b>963</b>		
<b>IAIU CPS Subtotal</b>		CPS	301	273	204	173	194	251	234	213	224	235	252	280	266	3,100	
<b>IAIU CWS Subtotal</b>		CWS	0	0	0	0	0	0	0	0	0	0	0	0	0	0	
<b>IAIU Subtotal</b>		<b>Total</b>	<b>301</b>	<b>273</b>	<b>204</b>	<b>173</b>	<b>194</b>	<b>251</b>	<b>234</b>	<b>213</b>	<b>224</b>	<b>235</b>	<b>252</b>	<b>280</b>	<b>266</b>	<b>3,100</b>	
<b>County and IAIU CPS Subtotal</b>		CPS	5,361	4,781	4,046	3,887	4,671	5,048	4,332	4,465	4,602	4,892	4,884	4,994	5,148	61,111	
<b>County and IAIU CWS Subtotal</b>		CWS	1,511	1,385	1,223	1,220	1,446	1,573	1,430	1,492	1,526	1,573	1,618	1,494	1,573	19,064	
<b>Unable to Determine<sup>(1)</sup></b>		<b>Total</b>	<b>144</b>	<b>153</b>	<b>142</b>	<b>124</b>	<b>153</b>	<b>136</b>	<b>131</b>	<b>114</b>	<b>128</b>	<b>126</b>	<b>165</b>	<b>115</b>	<b>149</b>	<b>1,780</b>	
<b>Other Offices</b>		<b>Total</b>	<b>2</b>	<b>4</b>	<b>2</b>	<b>3</b>	<b>1</b>	<b>1</b>	<b>1</b>	<b>3</b>	<b>1</b>	<b>5</b>	<b>2</b>	<b>4</b>	<b>1</b>	<b>30</b>	
<b>Grand Total</b>		<b>Total</b>	<b>7,018</b>	<b>6,323</b>	<b>5,413</b>	<b>5,234</b>	<b>6,271</b>	<b>6,758</b>	<b>5,894</b>	<b>6,074</b>	<b>6,257</b>	<b>6,596</b>	<b>6,669</b>	<b>6,607</b>	<b>6,871</b>	<b>81,985</b>	

<sup>(1)</sup>CPS Reports or CWS Referrals not assigned to an office through the Assignment Designee, but were assigned to an office for an assessment or investigation.