



Child Protection and Permanency

Monthly Screening and Investigation Report July 2017

Allison Blake, Ph.D., L.S.W.
Commissioner

August 22, 2017



Table of Contents

Table 1: NJ State Central Registry Activity: Monthly Child Abuse and Neglect Hotline Calls, Intakes and Assignments to Child Protection & Permanency (CP&P) Offices

Chart 1: CP&P Annual Trends in Child Protection Services (CPS) Reports and Child Welfare Services (CWS) Referrals

Table 2: Assignments to CP&P Offices: CPS Reports and CWS Referrals

Table 3: Source of CPS Reports and CWS Referrals

Table 4: Monthly Count of CPS Reports and CWS Referrals Assigned to Counties

Table 5: Monthly Count of CPS Reports and CWS Referrals Assigned to CP&P Local Offices

Table 1: NJ State Central Registry Activity: Monthly Child Abuse and Neglect Hotline Calls, Intakes and Assignments to CP&P Offices^{1,2,7}

2016 - 2017	Hotline Call Activity				Intakes Recorded in NJ SPIRIT ^{6,8}												Assignments to CP&P Offices				
	Total Calls to SCR ³	Abandon Calls ⁴	Average Time to Answer (seconds)	Resulting NJS Intakes ⁵	CPS Reports		CWS Referrals		No Action Required (NAR)		Related Information (RI)		Information & Referral (I&R)		Information Only (IO)		CPS Reports		CWS Referrals		Total
					n	%	n	%	n	%	n	%	n	%	n	%	n	%	n	%	
July 2016	11,304	338	25	12,531	3,663	29.2%	1,186	9.5%	295	2.4%	3,477	27.7%	1,376	11.0%	2,534	20.2%	3,663	75.5%	1,187	24.5%	4,850
August 2016	11,766	270	18	13,169	3,941	29.9%	1,308	9.9%	491	3.7%	3,311	25.1%	1,471	11.2%	2,647	20.1%	3,941	75.1%	1,307	24.9%	5,248
September 2016	13,277	383	25	14,637	4,654	31.8%	1,557	10.6%	305	2.1%	3,868	26.4%	1,699	11.6%	2,554	17.4%	4,654	74.9%	1,559	25.1%	6,213
October 2016	13,924	387	24	15,418	4,935	32.0%	1,623	10.5%	368	2.4%	4,100	26.6%	1,767	11.5%	2,625	17.0%	4,935	75.3%	1,622	24.7%	6,557
November 2016	13,310	441	30	14,666	4,677	31.9%	1,551	10.6%	300	2.0%	3,969	27.1%	1,667	11.4%	2,502	17.1%	4,677	75.1%	1,552	24.9%	6,229
December 2016	13,294	424	32	14,626	4,762	32.6%	1,579	10.8%	352	2.4%	3,916	26.8%	1,598	10.9%	2,419	16.5%	4,762	75.1%	1,580	24.9%	6,342
January 2017	14,182	603	45	15,375	5,111	33.2%	1,708	11.1%	321	2.1%	4,221	27.5%	1,670	10.9%	2,344	15.2%	5,111	75.0%	1,708	25.0%	6,819
February 2017	13,261	524	39	14,478	4,716	32.6%	1,503	10.4%	258	1.8%	3,882	26.8%	1,645	11.4%	2,474	17.1%	4,716	75.8%	1,504	24.2%	6,220
March 2017	14,751	538	33	16,228	5,349	33.0%	1,844	11.4%	426	2.6%	4,173	25.7%	1,892	11.7%	2,544	15.7%	5,349	74.4%	1,843	25.6%	7,192
April 2017	13,397	575	36	14,760	4,790	32.5%	1,489	10.1%	420	2.8%	4,037	27.4%	1,607	10.9%	2,417	16.4%	4,790	76.3%	1,490	23.7%	6,280
May 2017	13,397	575	36	17,359	5,847	33.7%	1,919	11.1%	378	2.2%	4,509	26.0%	2,028	11.7%	2,678	15.4%	5,847	75.3%	1,919	24.7%	7,766
June 2017	13,832	617	41	15,143	4,853	32.0%	1,664	11.0%	476	3.1%	4,063	26.8%	1,642	10.8%	2,445	16.1%	4,853	74.5%	1,665	25.5%	6,518
July 2017	12,245	710	57	13,369	3,814	28.5%	1,389	10.4%	336	2.5%	3,877	29.0%	1,436	10.7%	2,517	18.8%	3,814	73.3%	1,389	26.7%	5,203
Monthly Average	13,226	491	34	14,751	4,701	31.9%	1,563	10.6%	364	2.5%	3,954	26.8%	1,654	11.2%	2,515	17.1%	4,701	75.0%	1,563	25.0%	6,264
Overall Total	171,940	6,385		191,759	61,112		20,320		4,726		51,403		21,498		32,700		61,112	75.0%	20,325	25.0%	81,437

¹ Comes from three distinct sources: (1) the Automatic Call Distribution (ACD) phone system; which keeps a count of the number of calls and call routing; (2) Monthly NJSpirit Intakes; which record decision making on calls received by hotline screeners, and (3) NJSpirit extracts of assigned CWS Referrals and CPS Reports.

² The number of Intakes, CPS Reports, and CWS Referrals are based on an extract from NJSpirit. Data extracted by the Office of Research, Evaluation, and Reporting on **August 7, 2017** includes all Intakes, CPS Reports, and CWS Referrals received from **July 1, 2017 through July 31, 2017**.

³ The number calls received through the ACD System that were directed to a screener from any call-in phone number.

⁴ The number of calls received through the ACD System that are abandoned either while waiting in queue or while ringing.

⁵ The number of Intakes entered in NJSpirit from the number of calls received.

⁶ The number of Intakes recorded in NJSpirit, by type of Intake. There is not a one-to-one relationship between an ACD call and an Intake; multiple calls to State Central Registry (SCR) may result in a single Intake, or one call may result in multiple Intakes.

⁷ Intake: The process of documenting: a report of alleged abuse or neglect of a child (CPS); a request for services on behalf of a child, or a referral of a child for services (CWS); a call in which the caller provides additional or clarifying information about a current service case or active investigation (RI); informing a caller of, or referring a caller to, services available from other private or public sources (I&R); a call that requires no action by CP&P (NAR); or a response to a simple inquiry (IO).

⁸ NJ SPIRIT: NJ Statewide Protection Investigation and Reporting Information Tool case management system

CP&P Annual Trends in CPS Reports and CWS Referrals

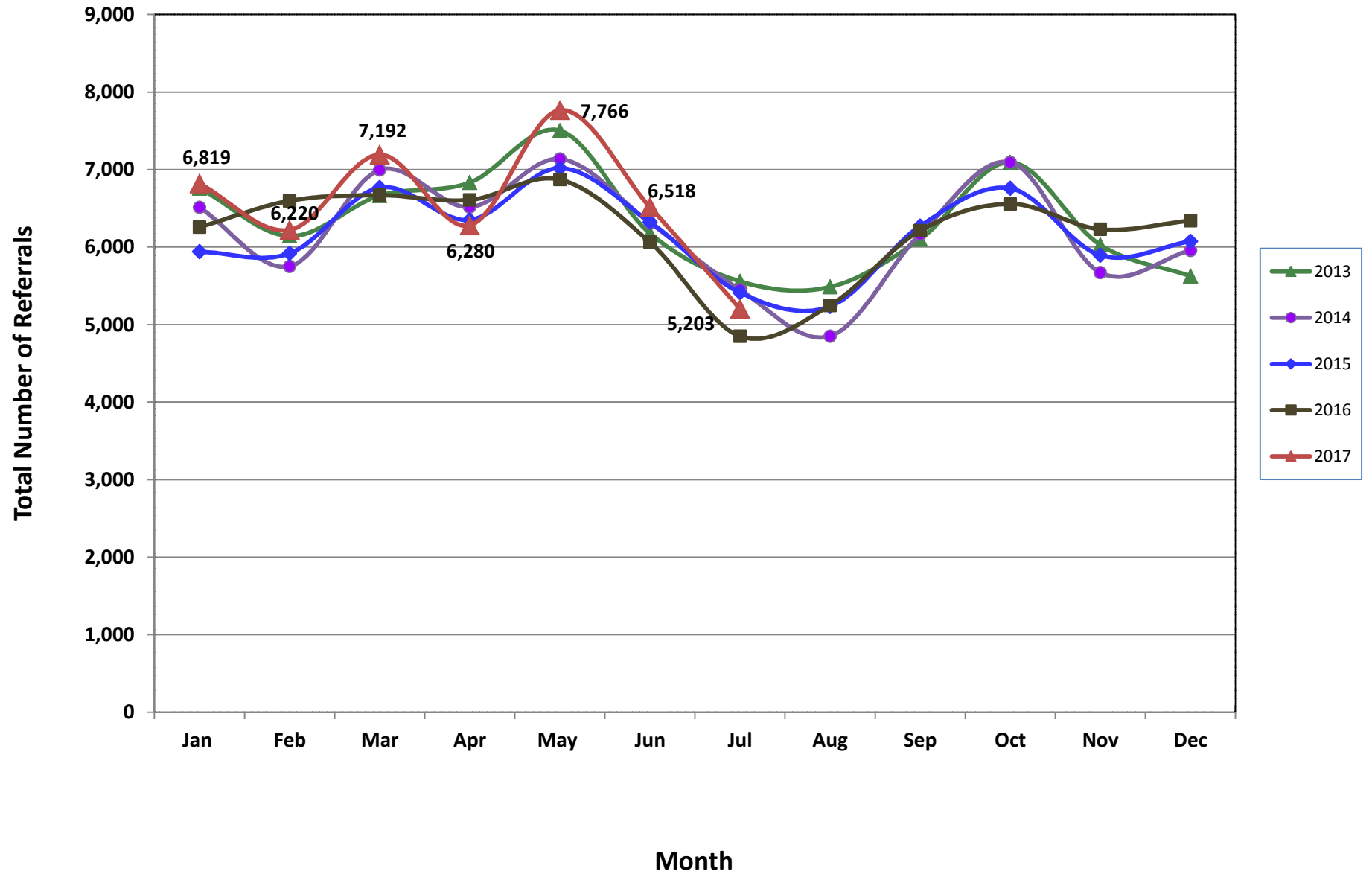


Table 2: Assignments to CP&P Offices: CPS Reports and CWS Referrals¹

Intake Date ³		CPS Reports ²	CWS Referrals ²	Total Assignments ²
2013	Jan 2013	5,464	1,296	6,760
	Feb 2013	4,966	1,177	6,143
	Mar 2013	5,355	1,309	6,664
	Apr 2013	5,430	1,402	6,832
	May 2013	5,993	1,510	7,503
	Jun 2013	4,947	1,230	6,177
	Jul 2013	4,330	1,228	5,558
	Aug 2013	4,330	1,155	5,485
	Sep 2013	4,851	1,251	6,102
	Oct 2013	5,614	1,481	7,095
	Nov 2013	4,694	1,334	6,028
	Dec 2013	4,397	1,229	5,626
	Total	60,371	15,602	75,973
2014	Jan 2014	5,097	1,416	6,513
	Feb 2014	4,457	1,295	5,752
	Mar 2014	5,408	1,586	6,994
	Apr 2014	5,049	1,467	6,516
	May 2014	5,501	1,635	7,136
	Jun 2014	4,796	1,517	6,313
	Jul 2014	4,202	1,247	5,449
	Aug 2014	3,629	1,222	4,851
	Sep 2014	4,668	1,498	6,166
	Oct 2014	5,509	1,586	7,095
	Nov 2014	4,254	1,416	5,670
	Dec 2014	4,509	1,447	5,956
	Total	57,079	17,332	74,411
2015	Jan 2015	4,549	1,391	5,940
	Feb 2015	4,574	1,345	5,919
	Mar 2015	5,187	1,580	6,767
	Apr 2015	4,967	1,384	6,351
	May 2015	5,457	1,561	7,018
	Jun 2015	4,887	1,436	6,323
	Jul 2015	4,140	1,273	5,413
	Aug 2015	3,978	1,256	5,234
	Sep 2015	4,776	1,495	6,271
	Oct 2015	5,139	1,619	6,758
	Nov 2015	4,417	1,477	5,894
	Dec 2015	4,530	1,544	6,074
	Total	56,601	17,361	73,962

Table 2: Assignments to CP&P Offices: CPS Reports and CWS Referrals¹

Intake Date ³		CPS Reports ²	CWS Referrals ²	Total Assignments ²
2016	Jan 2016	4,686	1,571	6,257
	Feb 2016	4,974	1,622	6,596
	Mar 2016	5,000	1,669	6,669
	Apr 2016	5,065	1,542	6,607
	May 2016	5,238	1,633	6,871
	Jun 2016	4,602	1,461	6,063
	Jul 2016	3,663	1,187	4,850
	Aug 2016	3,941	1,307	5,248
	Sep 2016	4,654	1,559	6,213
	Oct 2016	4,935	1,622	6,557
	Nov 2016	4,677	1,552	6,229
	Dec 2016	4,762	1,580	6,342
	Total	56,197	18,305	74,502
2017	Jan 2017	5,111	1,708	6,819
	Feb 2017	4,716	1,504	6,220
	Mar 2017	5,349	1,843	7,192
	Apr 2017	4,790	1,490	6,280
	May 2017	5,847	1,919	7,766
	Jun 2017	4,853	1,665	6,518
	Jul 2017	3,814	1,389	5,203
	Total	34,480	11,518	45,998
Grand Total		264,728	80,118	344,846

¹Source of Data: NJ SPIRIT

²A CPS Report or a CWS Referral may include multiple children in a family, with one or more allegation or request for services. In these cases, each CPS Report or CWS Referral is counted once - the CPS Report or the CWS Referral is the unit of analysis rather than the child.

³Prior to January 2014, the number of CPS Reports and CWS Referrals was based on the type of assignment of the CPS Report or CWS Referral. Beginning in January 2014, the number of CPS Reports and CWS Referrals is based on the number of CPS Reports and CWS Referrals received.

Table 3: Source of CPS Reports and CWS Referrals

	Source	Jul 2016	Aug 2016	Sep 2016	Oct 2016	Nov 2016	Dec 2016	Jan 2017	Feb 2017	Mar 2017	Apr 2017	May 2017	Jun 2017	July 2017		13 Month Total	
CPS Reports and CWS Referrals	School Staff	143	87	1,150	1,639	1,628	1,614	1,952	1,723	2,116	1,400	2,167	1,149	150	3%	16,918	21%
	Healthcare Provider	771	811	775	837	799	846	873	837	867	824	924	932	818	16%	10,914	13%
	Law Enforcement	1,048	1,093	1,013	1,049	989	936	992	881	1,022	1,133	1,177	1,072	1148	22%	13,553	17%
	Government Agency	407	509	445	446	399	384	453	432	491	376	434	438	400	8%	5,614	7%
	Parent	521	591	555	517	507	569	544	476	554	517	632	586	571	11%	7,140	9%
	Relative/Friend/Neighbor	472	544	594	506	431	443	444	379	434	462	536	525	541	10%	6,311	8%
	Anonymous	560	611	710	642	605	666	654	645	715	633	837	754	580	11%	8,612	11%
	CP&P	112	132	125	123	117	99	122	105	136	110	128	144	145	3%	1,598	2%
	Court/Legal	143	130	135	124	98	142	126	152	162	132	141	183	131	3%	1,799	2%
	Community Group/Individual	262	286	272	257	260	251	280	229	278	296	336	283	288	6%	3,578	4%
	Facility Staff (incl Correctional Facility)	70	94	95	97	85	85	98	76	81	99	95	102	90	2%	1,167	1%
	Child (Self)	46	50	37	41	41	41	34	34	34	22	38	38	35	1%	491	1%
	Other	274	297	287	266	252	255	232	240	280	259	300	296	283	5%	3,521	4%
	Daycare/Babysitter	21	13	20	13	18	11	15	11	22	17	21	16	23	0%	221	0%
	Total		6,871	5,248	6,213	5,248	6,229	6,342	6,819	6,220	6,819	6,280	7,766	6,518	5,203		81,776

Table 4: Monthly Count of CPS Reports and CWS Referrals Assigned to Counties

County														Average Number of Assignments Last 13 Months	Jun 17 to Jul 17 Numerical Difference
	Jul 2016	Aug 2016	Sep 2016	Oct 2016	Nov 2016	Dec 2016	Jan 2017	Feb 2017	Mar 2017	Apr 2017	May 2017	Jun 2017	Jul 2017		
Atlantic	184	234	252	285	243	239	241	221	271	233	312	253	214	245	-39
Bergen	251	264	340	370	352	384	423	375	409	370	425	351	284	354	-67
Burlington	238	262	309	293	325	259	333	289	343	262	394	283	262	296	-21
Camden	391	465	534	537	536	557	539	520	643	581	629	571	447	535	-124
Cape May	71	78	73	78	68	63	68	81	85	79	118	76	80	78	4
Cumberland	184	183	209	201	230	229	277	213	248	243	260	236	203	224	-33
Essex	534	573	626	713	659	709	722	627	781	701	878	770	561	681	-209
Gloucester	212	223	244	266	224	282	272	291	303	251	274	280	221	257	-59
Hudson	304	279	403	450	389	433	449	413	453	379	519	434	295	400	-139
Hunterdon	36	38	44	36	46	54	46	49	57	39	59	37	49	45	12
Mercer	227	234	272	230	280	224	288	236	277	251	327	272	210	256	-62
Middlesex	325	331	426	449	379	441	468	476	514	431	530	404	350	425	-54
Monmouth	272	327	347	382	332	348	391	374	399	349	435	357	276	353	-81
Morris	146	153	225	245	214	227	218	219	244	239	260	239	163	215	-76
Ocean	316	344	353	408	364	384	416	378	420	390	473	377	339	382	-38
Passaic	299	331	397	471	439	431	518	413	522	412	550	424	324	425	-100
Salem	63	67	89	78	66	60	93	73	78	87	90	85	74	77	-11
Somerset	139	112	149	158	184	164	147	146	178	153	180	151	111	152	-40
Sussex	90	87	101	80	96	104	101	84	106	74	102	93	72	92	-21
Union	255	244	323	316	312	306	341	303	361	317	375	335	255	311	-80
Warren	62	78	97	97	84	79	108	96	95	84	85	99	109	90	10
County Subtotals	4,599	4,907	5,813	6,143	5,822	5,977	6,459	5,877	6,787	5,925	7,275	6,127	4,899	5,893	-1,228
Central Region IAIU	33	54	52	63	57	59	41	58	54	50	75	67	42	54	-25
Metro Region IAIU	36	32	46	65	48	45	61	54	68	51	69	48	34	51	-14
Northern Region IAIU	27	45	62	76	70	52	65	58	68	48	87	49	47	58	-2
Southern Region IAIU	44	72	66	68	89	79	76	71	87	76	108	80	50	74	-30
IAIU Subtotals	140	203	226	272	264	235	243	241	277	225	339	244	173	237	-71
Unable to Determine¹	110	137	168	140	143	129	113	100	126	127	152	146	129	132	-17
Other Offices	1	1	6	2	0	1	4	2	2	3	0	1	2	2	1
Grand Total	4,850	5,248	6,213	6,557	6,229	6,342	6,819	6,220	7,192	6,280	7,766	6,518	5,203	6,264	-1,315

¹CPS Reports or CWS Referrals not assigned to an office through the Assignment Designee, but were assigned to an office for an assessment or investigation.



Table 5: Monthly Count of CPS Reports and CWS Referrals Assigned to CP&P Local Offices

County	Local Office	Type of Referral														Total
			Jul 2016	Aug 2016	Sep 2016	Oct 2016	Nov 2016	Dec 2016	Jan 2017	Feb 2017	Mar 2017	Apr 2017	May 2017	Jun 2017	Jul 2017	
ATLANTIC	Atlantic East	CPS	90	102	109	127	116	118	107	102	118	101	141	107	108	1,446
		CWS	25	44	38	34	42	33	27	21	35	34	45	41	32	451
		Total	115	146	147	161	158	151	134	123	153	135	186	148	140	1,897
	Atlantic West	CPS	51	72	82	101	60	75	73	69	86	74	102	76	60	981
		CWS	18	16	23	23	25	13	34	29	32	24	24	29	14	304
		Total	69	88	105	124	85	88	107	98	118	98	126	105	74	1,285
	County Totals	CPS	141	174	191	228	176	193	180	171	204	175	243	183	168	2,427
		CWS	43	60	61	57	67	46	61	50	67	58	69	70	46	755
		Total	184	234	252	285	243	239	241	221	271	233	312	253	214	3,182
BERGEN	Bergen Central	CPS	63	73	90	104	104	125	127	118	121	104	129	109	72	1,339
		CWS	37	29	28	34	40	44	52	42	45	42	51	31	34	509
		Total	100	102	118	138	144	169	179	160	166	146	180	140	106	1,848
	Bergen South	CPS	109	115	157	160	161	153	174	152	165	175	166	151	117	1,955
		CWS	42	47	65	72	47	62	70	63	78	49	79	60	61	795
		Total	151	162	222	232	208	215	244	215	243	224	245	211	178	2,750
	County Totals	CPS	172	188	247	264	265	278	301	270	286	279	295	260	189	3,294
		CWS	79	76	93	106	87	106	122	105	123	91	130	91	95	1,304
		Total	251	264	340	370	352	384	423	375	409	370	425	351	284	4,598
BURLINGTON	Burlington East	CPS	94	94	92	105	126	104	118	98	118	82	155	107	116	1,409
		CWS	34	33	49	41	33	30	45	40	55	34	61	35	32	522
		Total	128	127	141	146	159	134	163	138	173	116	216	142	148	1,931
	Burlington West	CPS	87	101	121	106	118	92	125	111	125	109	130	108	81	1,414
		CWS	23	34	47	41	48	33	45	40	45	37	48	33	33	507
		Total	110	135	168	147	166	125	170	151	170	146	178	141	114	1,921
	County Totals	CPS	181	195	213	211	244	196	243	209	243	191	285	215	197	2,823
		CWS	57	67	96	82	81	63	90	80	100	71	109	68	65	1,029
		Total	238	262	309	293	325	259	333	289	343	262	394	283	262	3,852
CAMDEN	Camden Central	CPS	92	97	115	146	121	114	106	113	158	119	125	136	99	1,541
		CWS	36	41	40	26	39	37	38	34	40	28	31	38	29	457
		Total	128	138	155	172	160	151	144	147	198	147	156	174	128	1,998
	Camden East	CPS	86	102	104	107	98	114	126	88	104	125	111	103	75	1,343
		CWS	31	21	34	32	34	43	43	30	33	32	46	32	34	445
		Total	117	123	138	139	132	157	169	118	137	157	157	135	109	1,788
	Camden North	CPS	56	79	97	101	95	102	102	107	131	120	155	114	88	1,347
		CWS	18	39	42	28	34	36	32	32	46	30	28	43	37	445
		Total	74	118	139	129	129	138	134	139	177	150	183	157	125	1,792
	Camden South	CPS	56	67	86	67	89	78	73	89	96	99	103	88	71	1,062
		CWS	16	19	16	30	26	33	19	27	35	28	30	17	14	310
		Total	72	86	102	97	115	111	92	116	131	127	133	105	85	1,372
	County Totals	CPS	290	345	402	421	403	408	407	397	489	463	494	441	333	5,293
		CWS	101	120	132	116	133	149	132	123	154	118	135	130	114	1,657
		Total	391	465	534	537	536	557	539	520	643	581	629	571	447	6,950
CAPE MAY	Cape May	CPS	51	65	62	62	48	53	52	65	68	50	100	67	64	807
		CWS	20	13	11	16	20	10	16	16	17	29	18	9	16	211
		Total	71	78	73	78	68	63	68	81	85	79	118	76	80	1,018
	County Totals	CPS	51	65	62	62	48	53	52	65	68	50	100	67	64	807
		CWS	20	13	11	16	20	10	16	16	17	29	18	9	16	211
		Total	71	78	73	78	68	63	68	81	85	79	118	76	80	1,018
CUMBERLAND	Cumberland East	CPS	46	40	48	40	58	70	70	59	60	65	70	48	50	724
		CWS	18	20	17	16	18	10	26	26	20	22	21	20	33	267
		Total	64	60	65	56	76	80	96	85	80	87	91	68	83	991
	Cumberland West	CPS	96	102	113	109	126	111	143	93	118	123	135	123	84	1,476
		CWS	24	21	31	36	28	38	38	35	50	33	34	45	36	449
		Total	120	123	144	145	154	149	181	128	168	156	169	168	120	1,925
	County Totals	CPS	142	142	161	149	184	181	213	152	178	188	205	171	134	2,200
		CWS	42	41	48	52	46	48	64	61	70	55	55	65	69	716
		Total	184	183	209	201	230	229	277	213	248	243	260	236	203	2,916

Data in this report is preliminary and may differ from any final report. This report is produced to ensure continuous quality improvement throughout DCF.

Table 5: Monthly Count of CPS Reports and CWS Referrals Assigned to CP&P Local Offices

County	Local Office	Type of Referral														Total
			Jul 2016	Aug 2016	Sep 2016	Oct 2016	Nov 2016	Dec 2016	Jan 2017	Feb 2017	Mar 2017	Apr 2017	May 2017	Jun 2017	Jul 2017	
SUSSEX	Sussex	CPS	74	69	79	55	70	71	71	68	85	52	70	67	52	883
		CWS	16	18	22	25	26	33	30	16	21	22	32	26	20	307
		Total	90	87	101	80	96	104	101	84	106	74	102	93	72	1190
	County Totals	CPS	74	69	79	55	70	71	71	68	85	52	70	67	52	883
		Total	90	87	101	80	96	104	101	84	106	74	102	93	72	1190
UNION	Union Central	CPS	60	55	78	84	82	83	86	75	94	80	87	84	73	1021
		CWS	24	27	26	22	28	25	38	20	31	21	21	35	30	348
		Total	84	82	104	106	110	108	124	95	125	101	108	119	103	1369
	Union East	CPS	67	66	74	77	78	73	98	82	94	82	97	97	55	1040
		CWS	26	23	28	35	33	31	29	25	22	30	35	27	15	359
		Total	93	89	102	112	111	104	127	107	116	112	132	124	70	1399
	Union West	CPS	57	49	90	78	65	62	68	67	87	86	94	57	53	913
		CWS	21	24	27	20	26	32	22	34	33	18	41	35	29	362
		Total	78	73	117	98	91	94	90	101	120	104	135	92	82	1275
	County Totals	CPS	184	170	242	239	225	218	252	224	275	248	278	238	181	2974
		CWS	71	74	81	77	87	88	89	79	86	69	97	97	74	1069
		Total	255	244	323	316	312	306	341	303	361	317	375	335	255	4043
WARREN	Warren	CPS	49	68	76	79	68	57	88	68	68	61	64	68	80	894
		CWS	13	10	21	18	16	22	20	28	27	23	21	31	29	279
		Total	62	78	97	97	84	79	108	96	95	84	85	99	109	1173
	County Totals	CPS	49	68	76	79	68	57	88	68	68	61	64	68	80	894
		Total	62	78	97	97	84	79	108	96	95	84	85	99	109	1173
County CPS Referral Total		CPS	3,453	3,653	4,328	4,571	4,328	4,448	4,794	4,413	5,003	4,489	5,407	4,531	3,569	56,987
County CWS Referral Total		CWS	1,146	1,254	1,485	1,572	1,494	1,529	1,665	1,464	1,784	1,436	1,868	1,596	1,330	19,623
County Referral Total		Total	4,599	4,907	5,813	6,143	5,822	5,977	6,459	5,877	6,787	5,925	7,275	6,127	4,899	76,610
Central Region IAIU	CPS	33	54	52	63	57	59	41	58	54	50	75	67	42	705	
	CWS	0	0	0	0	0	0	0	0	0	0	0	0	0	0	
	Total	33	54	52	63	57	59	41	58	54	50	75	67	42	705	
Metro Region IAIU	CPS	36	32	46	65	48	45	61	54	68	51	69	48	34	657	
	CWS	0	0	0	0	0	0	0	0	0	0	0	0	0	0	
	Total	36	32	46	65	48	45	61	54	68	51	69	48	34	657	
Northern Region IAIU	CPS	27	45	62	76	70	52	65	58	68	48	87	49	47	754	
	CWS	0	0	0	0	0	0	0	0	0	0	0	0	0	0	
	Total	27	45	62	76	70	52	65	58	68	48	87	49	47	754	
Southern Region IAIU	CPS	44	72	66	68	88	79	76	71	87	76	108	80	50	965	
	CWS	0	0	0	0	1	0	0	0	0	0	0	0	0	1	
	Total	44	72	66	68	89	79	76	71	87	76	108	80	50	966	
IAIU CPS Subtotal		CPS	140	203	226	272	263	235	243	241	277	225	339	244	173	3,081
IAIU CWS Subtotal		CWS	0	0	0	0	1	0	0	0	0	0	0	0	1	
IAIU Subtotal		Total	140	203	226	272	264	235	243	241	277	225	339	244	173	3,082
County and IAIU CPS Subtotal		CPS	3,593	3,856	4,554	4,843	4,591	4,683	5,037	4,654	5,280	4,714	5,746	4,775	3,742	60,068
County and IAIU CWS Subtotal		CWS	1,146	1,254	1,485	1,572	1,495	1,529	1,665	1,464	1,784	1,436	1,868	1,596	1,330	19,624
Unable to Determine⁽¹⁾		Total	110	137	168	140	143	129	113	100	126	127	152	146	129	1,720
Other Offices		Total	1	1	6	2	0	1	4	2	2	3	0	1	2	25
Grand Total		Total	4,850	5,248	6,213	6,557	6,229	6,342	6,819	6,220	7,192	6,280	7,766	6,518	5,203	81,437

⁽¹⁾CPS Reports or CWS Referrals not assigned to an office through the Assignment Designee, but were assigned to an office for an assessment or investigation.