



Child Protection and Permanency

Monthly Screening and Investigation Report August 2016

Allison Blake, Ph.D., L.S.W.
Commissioner

September 16, 2016



Table of Contents

Table 1: NJ State Central Registry Activity: Monthly Child Abuse and Neglect Hotline Calls, Intakes and Assignments to Child Protection & Permanency (CP&P) Offices

Chart 1: CP&P Annual Trends in Child Protection Services (CPS) Reports and Child Welfare Services (CWS) Referrals

Table 2: Assignments to CP&P Offices: CPS Reports and CWS Referrals

Table 3: Source of CPS Reports and CWS Referrals

Table 4: Monthly Count of CPS Reports and CWS Referrals Assigned to Counties

Table 5: Monthly Count of CPS Reports and CWS Referrals Assigned to CP&P Local Offices

Table 1: NJ State Central Registry Activity: Monthly Child Abuse and Neglect Hotline Calls, Intakes and Assignments to CP&P Offices^{1,2,7}

2015 - 2016	Hotline Call Activity				Intakes Recorded in NJ SPIRIT ^{6,8}												Assignments to CP&P Offices				
	Total Calls to SCR ³	Abandon Calls ⁴	Average Time to Answer (seconds)	Resulting NJS Intakes ⁵	CPS Reports		CWS Referrals		No Action Required (NAR)		Related Information (RI)		Information & Referral (I&R)		Information Only (IO)		CPS Reports		CWS Referrals		Total
					n	%	n	%	n	%	n	%	n	%	n	%	n	%	n	%	
August 2015	12,553	652	24	13,691	3,978	29.1%	1,257	9.2%	401	2.9%	3,713	27.1%	1,384	10.1%	2,958	21.6%	3,978	76.0%	1,256	24.0%	5,234
September 2015	13,335	351	24	14,955	4,776	31.9%	1,494	10.0%	467	3.1%	3,908	26.1%	1,601	10.7%	2,709	18.1%	4,776	76.2%	1,495	23.8%	6,271
October 2015	14,304	315	18	15,821	5,139	32.5%	1,620	10.2%	332	2.1%	4,073	25.7%	1,834	11.6%	2,823	17.8%	5,139	76.0%	1,619	24.0%	6,758
November 2015	13,321	445	20	14,527	4,417	30.4%	1,475	10.2%	347	2.4%	3,942	27.1%	1,513	10.4%	2,833	19.5%	4,417	74.9%	1,477	25.1%	5,894
December 2015	13,186	603	28	14,236	4,530	31.8%	1,544	10.8%	370	2.6%	3,709	26.1%	1,567	11.0%	2,516	17.7%	4,530	74.6%	1,544	25.4%	6,074
January 2016	13,499	551	40	14,655	4,686	32.0%	1,573	10.7%	282	1.9%	4,020	27.4%	1,482	10.1%	2,612	17.8%	4,686	74.9%	1,571	25.1%	6,257
February 2016	13,927	590	40	15,143	4,974	32.8%	1,620	10.7%	419	2.8%	3,836	25.3%	1,627	10.7%	2,667	17.6%	4,974	75.4%	1,622	24.6%	6,596
March 2016	14,064	446	32	15,619	5,000	32.0%	1,671	10.7%	428	2.7%	3,912	25.0%	1,812	11.6%	2,796	17.9%	5,000	75.0%	1,669	25.0%	6,669
April 2016	13,995	448	29	15,326	5,065	33.0%	1,541	10.1%	348	2.3%	3,774	24.6%	1,742	11.4%	2,856	18.6%	5,065	76.7%	1,542	23.3%	6,607
May 2016	14,389	413	26	15,806	5,238	33.1%	1,634	10.3%	393	2.5%	3,902	24.7%	1,852	11.7%	2,787	17.6%	5,238	76.2%	1,633	23.8%	6,871
June 2016	13,304	396	26	14,592	4,602	31.5%	1,460	10.0%	336	2.3%	3,687	25.3%	1,808	12.4%	2,699	18.5%	4,602	75.9%	1,461	24.1%	6,063
July 2016	11,304	338	25	12,531	3,663	29.2%	1,186	9.5%	295	2.4%	3,477	27.7%	1,376	11.0%	2,534	20.2%	3,663	75.5%	1,187	24.5%	4,850
August 2016	11,766	270	18	13,169	3,941	29.9%	1,308	9.9%	491	3.7%	3,311	25.1%	1,471	11.2%	2,647	20.1%	3,941	75.1%	1,307	24.9%	5,248
	12,399	427	26	13,608	4,313	31.7%	1,390	10.2%	340	2.5%	3,535	26.0%	1,508	11.1%	2,522	18.5%	4,313	75.6%	1,390	24.4%	5,703
Overall Total	161,181	5,548		176,902	56,068		18,075		4,418		45,953		19,598		32,790		56,068	75.6%	18,076	24.4%	74,144

¹ Comes from three distinct sources: (1) the Automatic Call Distribution (ACD) phone system; which keeps a count of the number of calls and call routing; (2) Monthly NJSpirit Intakes; which record decision making on calls received by hotline screeners, and (3) NJSpirit extracts of assigned CWS Referrals and CPS Reports.

² The number of Intakes, CPS Reports, and CWS Referrals are based on an extract from NJSpirit. Data extracted by the Office of Research, Evaluation, and Reporting on **September 15, 2016** includes all Intakes, CPS Reports, and CWS Referrals received from **August 1, 2016 through August 31, 2016**.

³ The number calls received through the ACD System that were directed to a screener from any call-in phone number.

⁴ The number of calls received through the ACD System that are abandoned either while waiting in queue or while ringing.

⁵ The number of Intakes entered in NJSpirit from the number of calls received.

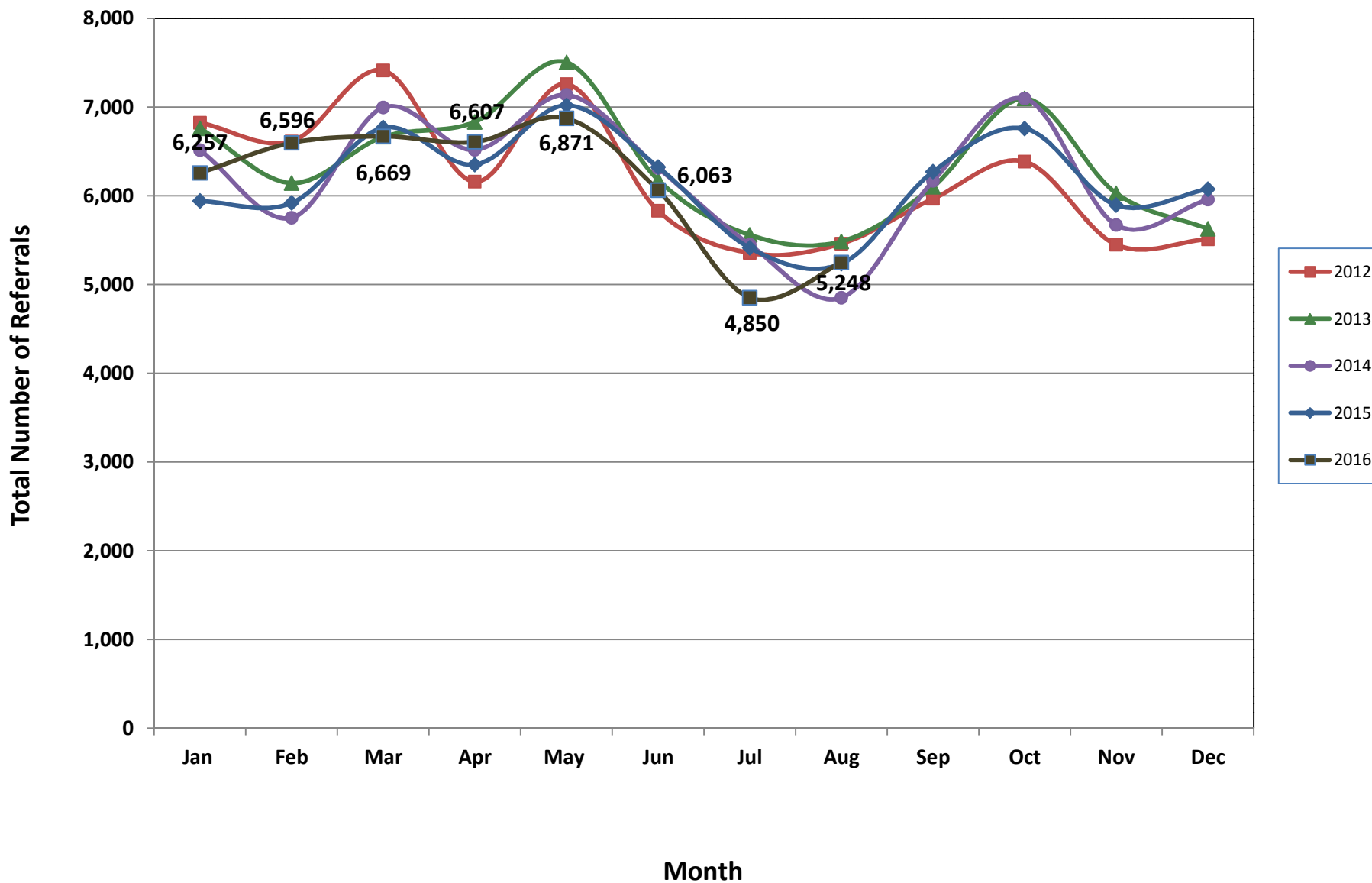
⁶ The number of Intakes recorded in NJSpirit, by type of Intake. There is not a one-to-one relationship between an ACD call and an Intake; multiple calls to State Central Registry (SCR) may result in a single Intake, or one call may result in multiple Intakes.

⁷ Intake: The process of documenting: a report of alleged abuse or neglect of a child (CPS); a request for services on behalf of a child, or a referral of a child for services (CWS); a call in which the caller provides additional or clarifying information about a current service case or active investigation (RI); informing a caller of, or referring a caller to, services available from other private or public sources (I&R); a call that requires no action by CP&P (NAR); or a response to a simple inquiry (IO).

⁸ NJ SPIRIT: NJ Statewide Protection Investigation and Reporting Information Tool case management system



CP&P Annual Trends in CPS Reports and CWS Referrals



The data contained in this report is considered preliminary and as a result, these figures might be different than the final reported figures. The data is produced for continuous quality improvement.

Table 2: Assignments to CP&P Offices: CPS Reports and CWS Referrals¹

Intake Date ³		CPS Reports ²	CWS Referrals ²	Total Assignments ²
2012	Jan 2012	5,530	1,294	6,824
	Feb 2012	5,358	1,255	6,613
	Mar 2012	5,985	1,428	7,413
	Apr 2012	4,899	1,259	6,158
	May 2012	5,874	1,385	7,259
	Jun 2012	4,640	1,190	5,830
	Jul 2012	4,254	1,101	5,355
	Aug 2012	4,325	1,135	5,460
	Sep 2012	4,769	1,196	5,965
	Oct 2012	5,178	1,207	6,385
	Nov 2012	4,310	1,138	5,448
	Dec 2012	4,394	1,116	5,510
	Total	59,516	14,704	74,220
2013	Jan 2013	5,464	1,296	6,760
	Feb 2013	4,966	1,177	6,143
	Mar 2013	5,355	1,309	6,664
	Apr 2013	5,430	1,402	6,832
	May 2013	5,993	1,510	7,503
	Jun 2013	4,947	1,230	6,177
	Jul 2013	4,330	1,228	5,558
	Aug 2013	4,330	1,155	5,485
	Sep 2013	4,851	1,251	6,102
	Oct 2013	5,614	1,481	7,095
	Nov 2013	4,694	1,334	6,028
	Dec 2013	4,397	1,229	5,626
	Total	60,371	15,602	75,973
2014	Jan 2014	5,097	1,416	6,513
	Feb 2014	4,457	1,295	5,752
	Mar 2014	5,408	1,586	6,994
	Apr 2014	5,049	1,467	6,516
	May 2014	5,501	1,635	7,136
	Jun 2014	4,796	1,517	6,313
	Jul 2014	4,202	1,247	5,449
	Aug 2014	3,629	1,222	4,851
	Sep 2014	4,668	1,498	6,166
	Oct 2014	5,509	1,586	7,095
	Nov 2014	4,254	1,416	5,670
	Dec 2014	4,509	1,447	5,956
	Total	57,079	17,332	74,411

Table 2: Assignments to CP&P Offices: CPS Reports and CWS Referrals¹

Intake Date ³		CPS Reports ²	CWS Referrals ²	Total Assignments ²
2015	Jan 2015	4,549	1,391	5,940
	Feb 2015	4,574	1,345	5,919
	Mar 2015	5,187	1,580	6,767
	Apr 2015	4,967	1,384	6,351
	May 2015	5,457	1,561	7,018
	Jun 2015	4,887	1,436	6,323
	Jul 2015	4,140	1,273	5,413
	Aug 2015	3,978	1,256	5,234
	Sep 2015	4,776	1,495	6,271
	Oct 2015	5,139	1,619	6,758
	Nov 2015	4,417	1,477	5,894
	Dec 2015	4,530	1,544	6,074
	Total	56,601	17,361	73,962
2016	Jan 2016	4,686	1,571	6,257
	Feb 2016	4,974	1,622	6,596
	Mar 2016	5,000	1,669	6,669
	Apr 2016	5,065	1,542	6,607
	May 2016	5,238	1,633	6,871
	Jun 2016	4,602	1,461	6,063
	Jul 2016	3,663	1,187	4,850
	Aug 2016	3,941	1,307	5,248
	Total	37,169	11,992	49,161
Grand Total		270,736	76,991	347,727

¹Source of Data: NJ SPIRIT

²A CPS Report or a CWS Referral may include multiple children in a family, with one or more allegation or request for services. In these cases, each CPS Report or CWS Referral is counted once - the CPS Report or the CWS Referral is the unit of analysis rather than the child.

³Prior to January 2014, the number of CPS Reports and CWS Referrals was based on the type of assignment of the CPS Report or CWS Referral. Beginning in January 2014, the number of CPS Reports and CWS Referrals is based on the number of CPS Reports and CWS Referrals received.

Table 3: Source of CPS Reports and CWS Referrals

CPS Reports and CWS Referrals	Source	Aug 2015	Sep 2015	Oct 2015	Nov 2015	Dec 2015	Jan 2016	Feb 2016	Mar 2016	Apr 2016	May 2016	Jun 2016	Jul 2016	Aug 2016		13 Month Total	
	School Staff	75	1,123	1,763	1,454	1,596	1,569	1,900	1,690	1,646	1,765	982	143	87	2%	15,793	20%
	Healthcare Provider	832	780	825	766	780	830	852	892	895	823	814	771	811	15%	10,671	13%
	Law Enforcement	1,010	1,040	1,003	909	910	910	953	1,052	1,030	1,056	1,152	1,048	1,093	21%	13,166	17%
	Government Agency	449	437	426	376	389	412	394	448	410	419	439	407	509	10%	5,515	7%
	Parent	592	589	518	451	495	529	504	503	566	597	546	521	591	11%	7,002	9%
	Relative/Friend/Neighbor	595	592	526	466	455	446	454	424	473	553	540	472	544	10%	6,540	8%
	Anonymous	622	739	710	609	587	628	612	676	662	777	697	560	611	12%	8,490	11%
	CP&P	110	123	137	121	112	113	133	155	104	133	120	112	132	3%	1,605	2%
	Court/Legal	113	115	119	108	108	119	132	154	137	141	124	143	130	2%	1,643	2%
	Community Group/Individual	297	243	306	240	255	294	274	262	269	236	238	262	286	5%	3,462	4%
	Facility Staff (incl Correctional Facility)	105	78	83	83	81	91	80	76	88	64	68	70	94	2%	1,061	1%
	Child (Self)	67	47	34	31	21	41	37	36	46	37	38	46	50	1%	531	1%
	Other	344	348	288	265	274	259	253	286	257	252	285	274	297	6%	3,682	5%
	Daycare/Babysitter	23	17	20	15	11	16	18	15	24	18	20	21	13	0%	231	0%
Total	5,234	6,271	6,758	5,894	6,074	6,257	6,596	6,669	6,607	6,871	6,063	4,850	5,248		79,392		

Table 4: Monthly Count of CPS Reports and CWS Referrals Assigned to Counties

County														Average Number of Assignments Last 13 Months	Jul 16 to Aug 16 Numerical Difference
	Aug 2015	Sep 2015	Oct 2015	Nov 2015	Dec 2015	Jan 2016	Feb 2016	Mar 2016	April 2016	May 2016	Jun 2016	Jul 2016	Aug 2016		
Atlantic	227	295	267	227	255	251	284	265	250	291	221	184	234	250	50
Bergen	257	345	411	336	394	333	392	369	321	385	354	251	264	339	13
Burlington	284	307	303	258	268	275	315	309	321	321	260	238	262	286	24
Camden	438	516	609	461	498	558	551	527	573	608	532	391	465	517	74
Cape May	86	92	112	75	89	83	65	79	94	82	67	71	78	83	7
Cumberland	152	231	215	177	174	195	179	206	219	245	202	184	183	197	-1
Essex	565	635	675	660	625	685	701	752	743	717	644	534	573	655	39
Gloucester	255	247	300	245	261	251	252	285	267	233	234	212	223	251	11
Hudson	325	399	451	342	431	424	450	412	403	481	400	304	279	392	-25
Hunterdon	38	58	52	37	39	53	58	46	62	38	42	36	38	46	2
Mercer	226	263	324	254	252	265	263	276	278	282	255	227	234	261	7
Middlesex	317	400	466	387	435	419	439	479	492	470	387	325	331	411	6
Monmouth	301	364	361	343	308	328	413	361	373	366	353	272	327	344	55
Morris	175	250	239	216	215	238	228	217	222	247	228	146	153	213	7
Ocean	369	376	383	401	336	403	378	366	365	415	354	316	344	370	28
Passaic	345	422	461	422	449	421	504	510	455	456	401	299	331	421	32
Salem	53	102	72	89	81	94	67	94	89	82	80	63	67	79	4
Somerset	128	155	153	157	143	141	160	165	152	169	160	139	112	149	-27
Sussex	84	89	104	103	95	95	113	105	94	88	91	90	87	95	-3
Union	215	276	304	257	318	299	331	350	336	373	295	255	244	296	-11
Warren	94	101	107	81	78	93	87	77	99	106	88	62	78	89	16
County Subtotals	4,934	5,923	6,369	5,528	5,744	5,904	6,230	6,250	6,208	6,455	5,648	4,599	4,907	5,746	308
Central Region IAIU	41	53	52	56	62	44	53	46	59	55	53	33	54	51	21
Metro Region IAIU	30	36	50	48	46	43	60	64	60	68	61	36	32	49	-4
Northern Region IAIU	43	45	66	58	44	58	58	66	71	70	66	27	45	55	18
Southern Region IAIU	59	60	83	72	61	79	64	76	90	73	92	44	72	71	28
IAIU Subtotals	173	194	251	234	213	224	235	252	280	266	272	140	203	226	63
Unable to Determine¹	124	153	136	131	114	128	126	165	115	149	140	110	137	133	27
Other Offices	3	1	2	1	3	1	5	2	4	1	3	1	1	2	0
Grand Total	5,234	6,271	6,758	5,894	6,074	6,257	6,596	6,669	6,607	6,871	6,063	4,850	5,248	6,107	398

¹CPS Reports or CWS Referrals not assigned to an office through the Assignment Designee, but were assigned to an office for an assessment or investigation.

Table 5: Monthly Count of CPS Reports and CWS Referrals Assigned to CP&P Local Offices

County	Local Office	Type of Referral	Month													Total
			Aug 2015	Sep 2015	Oct 2015	Nov 2015	Dec 2015	Jan 2016	Feb 2016	Mar 2016	Apr 2016	May 2016	Jun 2016	Jul 2016	Jul 2016	
ATLANTIC	Atlantic East	CPS	107	134	115	107	113	110	133	144	97	129	108	90	102	1,489
		CWS	26	35	30	32	36	43	34	27	35	41	34	25	44	442
		Total	133	169	145	139	149	153	167	171	132	170	142	115	146	1,931
	Atlantic West	CPS	77	94	101	70	82	70	88	71	95	94	66	51	72	1,031
		CWS	17	32	21	18	24	28	29	23	23	27	13	18	16	289
		Total	94	126	122	88	106	98	117	94	118	121	79	69	88	1,320
	County Totals	CPS	184	228	216	177	195	180	221	215	192	223	174	141	174	2,520
		CWS	43	67	51	50	60	71	63	50	58	68	47	43	60	731
		Total	227	295	267	227	255	251	284	265	250	291	221	184	234	3,251
BERGEN	Bergen Central	CPS	72	98	117	98	119	128	107	121	101	134	121	63	73	1,352
		CWS	29	36	50	37	41	39	51	48	32	40	39	37	29	508
		Total	101	134	167	135	160	167	158	169	133	174	160	100	102	1,860
	Bergen South	CPS	106	157	177	144	164	121	174	150	136	162	143	109	115	1,858
		CWS	50	54	67	57	70	45	60	50	52	49	51	42	47	694
		Total	156	211	244	201	234	166	234	200	188	211	194	151	162	2,552
	County Totals	CPS	178	255	294	242	283	249	281	271	237	296	264	172	188	3,210
		CWS	79	90	117	94	111	84	111	98	84	89	90	79	76	1,202
		Total	257	345	411	336	394	333	392	369	321	385	354	251	264	4,412
BURLINGTON	Burlington East	CPS	110	110	121	93	118	117	127	105	131	128	84	94	94	1,432
		CWS	36	36	31	28	20	32	39	38	32	39	34	34	33	432
		Total	146	146	152	121	138	149	166	143	163	167	118	128	127	1,864
	Burlington West	CPS	97	120	119	107	101	92	109	124	130	117	109	87	101	1,413
		CWS	41	41	32	30	29	34	40	42	28	37	33	23	34	444
		Total	138	161	151	137	130	126	149	166	158	154	142	110	135	1,857
	County Totals	CPS	207	230	240	200	219	209	236	229	261	245	193	181	195	2,845
		CWS	77	77	63	58	49	66	79	80	60	76	67	57	67	876
		Total	284	307	303	258	268	275	315	309	321	321	260	238	262	3,721
CAMDEN	Camden Central	CPS	93	116	148	101	104	127	119	104	136	123	122	92	97	1,482
		CWS	25	36	38	34	24	34	34	44	36	38	53	36	41	473
		Total	118	152	186	135	128	161	153	148	172	161	175	128	138	1,955
	Camden East	CPS	105	109	123	100	106	108	106	104	114	123	94	86	102	1,380
		CWS	28	21	21	32	27	28	27	16	27	33	28	31	21	340
		Total	133	130	144	132	133	136	133	120	141	156	122	117	123	1,720
	Camden North	CPS	77	95	120	83	108	104	105	102	132	115	95	56	79	1,271
		CWS	24	33	40	17	34	40	45	46	27	47	34	18	39	444
		Total	101	128	160	100	142	144	150	148	159	162	129	74	118	1,715
	Camden South	CPS	66	83	88	77	75	85	86	77	79	97	80	56	67	1,016
		CWS	20	23	31	17	20	32	29	34	22	32	26	16	19	321
		Total	86	106	119	94	95	117	115	111	101	129	106	72	86	1,337
	County Totals	CPS	341	403	479	361	393	424	416	387	461	458	391	290	345	5,149
		CWS	97	113	130	100	105	134	135	140	112	150	141	101	120	1,578
		Total	438	516	609	461	498	558	551	527	573	608	532	391	465	6,727
CAPE MAY	Cape May	CPS	69	72	87	51	64	61	51	57	72	68	51	51	65	819
		CWS	17	20	25	24	25	22	14	22	22	14	16	20	13	254
		Total	86	92	112	75	89	83	65	79	94	82	67	71	78	1,073
	County Totals	CPS	69	72	87	51	64	61	51	57	72	68	51	51	65	819
		CWS	17	20	25	24	25	22	14	22	22	14	16	20	13	254
		Total	86	92	112	75	89	83	65	79	94	82	67	71	78	1,073
CUMBERLAND	Cumberland East	CPS	36	61	42	39	46	59	52	48	64	81	61	46	40	675
		CWS	9	18	26	18	14	12	13	16	18	14	16	18	20	212
		Total	45	79	68	57	60	71	65	64	82	95	77	64	60	887
	Cumberland West	CPS	81	123	116	88	83	99	96	116	102	115	101	96	102	1,318
		CWS	26	29	31	32	31	25	18	26	35	35	24	24	21	357
		Total	107	152	147	120	114	124	114	142	137	150	125	120	123	1,675
	County Totals	CPS	117	184	158	127	129	158	148	164	166	196	162	142	142	1,993
		CWS	35	47	57	50	45	37	31	42	53	49	40	42	41	569
		Total	152	231	215	177	174	195	179	206	219	245	202	184	183	2,562



Table 5: Monthly Count of CPS Reports and CWS Referrals Assigned to CP&P Local Offices

County	Local Office	Type of Referral	Month													Total
			Aug 2015	Sep 2015	Oct 2015	Nov 2015	Dec 2015	Jan 2016	Feb 2016	Mar 2016	Apr 2016	May 2016	Jun 2016	Jul 2016	Jul 2016	
ESSEX	Essex Central	CPS	85	80	105	87	72	82	85	108	101	108	112	75	77	1,177
		CWS	41	26	42	37	39	43	37	42	38	41	23	27	27	463
		Total	126	106	147	124	111	125	122	150	139	149	135	102	104	1,640
	Essex North	CPS	40	53	53	54	66	53	73	75	48	59	54	58	57	743
		CWS	17	22	23	21	30	29	25	35	21	19	24	29	14	309
		Total	57	75	76	75	96	82	98	110	69	78	78	87	71	1,052
	Essex South	CPS	49	66	57	58	56	63	79	66	56	60	62	47	46	765
		CWS	16	25	23	16	17	27	22	26	26	24	34	19	21	296
		Total	65	91	80	74	73	90	101	92	82	84	96	66	67	1061
	Newark Center City	CPS	64	89	83	82	78	91	95	87	110	97	95	64	69	1104
		CWS	29	29	35	36	39	26	30	42	45	34	25	24	25	419
		Total	93	118	118	118	117	117	125	129	155	131	120	88	94	1523
	Newark Northeast	CPS	69	101	83	81	65	92	89	99	115	93	72	56	94	1109
		CWS	26	25	37	34	33	39	30	36	27	47	24	22	29	409
Total		95	126	120	115	98	131	119	135	142	140	96	78	123	1518	
Newark South	CPS	94	88	100	106	92	107	96	104	121	87	80	80	84	1239	
	CWS	35	31	34	48	38	33	40	32	35	48	39	33	30	476	
	Total	129	119	134	154	130	140	136	136	156	135	119	113	114	1715	
County Totals	CPS	401	477	481	468	429	488	517	539	551	504	475	380	427	6137	
	CWS	164	158	194	192	196	197	184	213	192	213	169	154	146	2372	
	Total	565	635	675	660	625	685	701	752	743	717	644	534	573	8509	
GLOUCESTER	Gloucester East	CPS	98	98	109	91	101	97	93	112	99	84	89	75	84	1230
		CWS	34	24	26	17	25	35	24	38	31	26	26	28	26	360
		Total	132	122	135	108	126	132	117	150	130	110	115	103	110	1590
	Gloucester West	CPS	93	94	133	103	109	91	102	106	115	87	85	90	79	1287
		CWS	30	31	32	34	26	28	33	29	22	36	34	19	34	388
		Total	123	125	165	137	135	119	135	135	137	123	119	109	113	1675
	County Totals	CPS	191	192	242	194	210	188	195	218	214	171	174	165	163	2517
		CWS	64	55	58	51	51	63	57	67	53	62	60	47	60	748
		Total	255	247	300	245	261	251	252	285	267	233	234	212	223	3265
HUDSON	Hudson Central	CPS	60	62	72	59	79	75	89	74	67	83	52	61	56	889
		CWS	30	25	26	16	25	23	28	25	31	23	34	21	10	317
		Total	90	87	98	75	104	98	117	99	98	106	86	82	66	1206
	Hudson North	CPS	54	91	86	74	87	95	77	96	88	101	77	62	52	1040
		CWS	16	22	31	29	30	37	35	34	27	31	30	23	18	363
		Total	70	113	117	103	117	132	112	130	115	132	107	85	70	1403
	Hudson South	CPS	71	66	93	61	93	60	81	60	68	86	71	52	56	918
		CWS	19	31	28	22	28	20	25	23	21	45	30	28	30	350
		Total	90	97	121	83	121	80	106	83	89	131	101	80	86	1268
	Hudson West	CPS	55	77	82	60	74	87	90	71	79	87	84	49	41	936
		CWS	20	25	33	21	15	27	25	29	22	25	22	8	16	288
		Total	75	102	115	81	89	114	115	100	101	112	106	57	57	1224
	County Totals	CPS	240	296	333	254	333	317	337	301	302	357	284	224	205	3783
CWS		85	103	118	88	98	107	113	111	101	124	116	80	74	1318	
Total		325	399	451	342	431	424	450	412	403	481	400	304	279	5101	
HUNTERDON	Hunterdon	CPS	27	41	40	27	27	35	41	33	49	29	33	28	25	435
		CWS	11	17	12	10	12	18	17	13	13	9	9	8	13	162
		Total	38	58	52	37	39	53	58	46	62	38	42	36	38	597
	County Totals	CPS	27	41	40	27	27	35	41	33	49	29	33	28	25	435
		CWS	11	17	12	10	12	18	17	13	13	9	9	8	13	162
Total	38	58	52	37	39	53	58	46	62	38	42	36	38	597		
MERCER	Mercer North	CPS	82	87	115	79	89	91	98	100	95	93	103	92	89	1213
		CWS	18	33	40	46	33	37	29	33	23	27	32	21	27	399
		Total	100	120	155	125	122	128	127	133	118	120	135	113	116	1612
	Mercer South	CPS	107	107	125	98	100	102	108	102	121	124	91	81	91	1357
		CWS	19	36	44	31	30	35	28	41	39	38	29	33	27	430
		Total	126	143	169	129	130	137	136	143	160	162	120	114	118	1787
	County Totals	CPS	189	194	240	177	189	193	206	202	216	217	194	173	180	2570
CWS		37	69	84	77	63	72	57	74	62	65	61	54	54	829	
Total	226	263	324	254	252	265	263	276	278	282	255	227	234	3399		

Data in this report is preliminary and may differ from any final report. This report is produced to ensure continuous quality improvement throughout DCF.



Table 5: Monthly Count of CPS Reports and CWS Referrals Assigned to CP&P Local Offices

County	Local Office	Type of Referral														Total	
			Aug 2015	Sep 2015	Oct 2015	Nov 2015	Dec 2015	Jan 2016	Feb 2016	Mar 2016	Apr 2016	May 2016	Jun 2016	Jul 2016	Jul 2016		
MIDDLESEX	Middlesex Central	CPS	56	86	86	66	91	70	78	77	72	97	80	57	56	972	
		CWS	18	28	27	20	27	25	23	25	32	31	26	19	16	317	
		Total	74	114	113	86	118	95	101	102	104	128	106	76	72	1289	
	Middlesex Coastal	CPS	105	110	132	110	119	104	129	152	141	136	101	107	89	1535	
		CWS	24	33	35	38	33	41	46	39	39	29	35	26	36	454	
		Total	129	143	167	148	152	145	175	191	180	165	136	133	125	1989	
	Middlesex West	CPS	84	105	132	118	114	132	131	133	151	135	117	90	95	1537	
		CWS	30	38	54	35	51	47	32	53	57	42	28	26	39	532	
		Total	114	143	186	153	165	179	163	186	208	177	145	116	134	2069	
	County Totals	CPS	245	301	350	294	324	306	338	362	364	368	298	254	240	4044	
		CWS	72	99	116	93	111	113	101	117	128	102	89	71	91	1303	
Total		317	400	466	387	435	419	439	479	492	470	387	325	331	5347		
MONMOUTH	Monmouth North	CPS	119	159	160	134	135	135	184	145	150	165	154	105	128	1873	
		CWS	33	58	51	50	47	35	44	38	47	40	36	29	49	557	
		Total	152	217	211	184	182	170	228	183	197	205	190	134	177	2430	
	Monmouth South	CPS	111	118	118	118	95	115	130	137	124	121	127	102	118	1534	
		CWS	38	29	32	41	31	43	55	41	52	40	36	36	32	506	
		Total	149	147	150	159	126	158	185	178	176	161	163	138	150	2040	
	County Totals	CPS	230	277	278	252	230	250	314	282	274	286	281	207	246	3407	
		CWS	71	87	83	91	78	78	99	79	99	80	72	65	81	1063	
		Total	301	364	361	343	308	328	413	361	373	366	353	272	327	4470	
	MORRIS	Morris East	CPS	59	85	95	68	47	73	77	81	63	74	75	48	37	882
			CWS	20	29	26	27	27	24	34	27	23	35	22	22	11	327
Total			79	114	121	95	74	97	111	108	86	109	97	70	48	1209	
Morris West		CPS	74	100	87	90	98	114	83	73	98	102	86	56	77	1138	
		CWS	22	36	31	31	43	27	34	36	38	36	45	20	28	427	
		Total	96	136	118	121	141	141	117	109	136	138	131	76	105	1565	
County Totals		CPS	133	185	182	158	145	187	160	154	161	176	161	104	114	2020	
		CWS	42	65	57	58	70	51	68	63	61	71	67	42	39	754	
		Total	175	250	239	216	215	238	228	217	222	247	228	146	153	2774	
OCEAN		Ocean North	CPS	119	118	145	161	125	142	146	150	157	180	152	142	142	1879
			CWS	39	43	32	57	43	63	50	43	42	46	44	29	39	570
	Total		158	161	177	218	168	205	196	193	199	226	196	171	181	2449	
	Ocean South	CPS	171	170	162	135	130	151	137	130	127	145	120	115	117	1810	
		CWS	40	45	44	48	38	47	45	43	39	44	38	30	46	547	
		Total	211	215	206	183	168	198	182	173	166	189	158	145	163	2357	
	County Totals	CPS	290	288	307	296	255	293	283	280	284	325	272	257	259	3689	
		CWS	79	88	76	105	81	110	95	86	81	90	82	59	85	1117	
		Total	369	376	383	401	336	403	378	366	365	415	354	316	344	4806	
	PASSAIC	Passaic Central	CPS	133	159	161	163	178	144	202	169	166	175	183	122	121	2076
			CWS	55	55	91	66	68	68	89	89	66	82	55	41	42	867
Total			188	214	252	229	246	212	291	258	232	257	238	163	163	2943	
Passaic North		CPS	123	142	153	141	137	152	159	170	162	151	120	96	121	1827	
		CWS	34	66	56	52	66	57	54	82	61	48	43	40	47	706	
		Total	157	208	209	193	203	209	213	252	223	199	163	136	168	2533	
County Totals		CPS	256	301	314	304	315	296	361	339	328	326	303	218	242	3903	
		CWS	89	121	147	118	134	125	143	171	127	130	98	81	89	1573	
		Total	345	422	461	422	449	421	504	510	455	456	401	299	331	5476	
SALEM		Salem	CPS	35	77	47	75	58	72	43	78	61	64	57	52	48	767
			CWS	18	25	25	14	23	22	24	16	28	18	23	11	19	266
	Total		53	102	72	89	81	94	67	94	89	82	80	63	67	1033	
	County Totals	CPS	35	77	47	75	58	72	43	78	61	64	57	52	48	767	
		CWS	18	25	25	14	23	22	24	16	28	18	23	11	19	266	
		Total	53	102	72	89	81	94	67	94	89	82	80	63	67	1033	
SOMERSET	Somerset	CPS	88	120	121	121	104	104	120	124	115	136	129	107	88	1477	
		CWS	40	35	32	36	39	37	40	41	37	33	31	32	24	457	
		Total	128	155	153	157	143	141	160	165	152	169	160	139	112	1934	
	County Totals	CPS	88	120	121	121	104	104	120	124	115	136	129	107	88	1477	
		CWS	40	35	32	36	39	37	40	41	37	33	31	32	24	457	
Total	128	155	153	157	143	141	160	165	152	169	160	139	112	1934			

Data in this report is preliminary and may differ from any final report. This report is produced to ensure continuous quality improvement throughout DCF.



Table 5: Monthly Count of CPS Reports and CWS Referrals Assigned to CP&P Local Offices

County	Local Office	Type of Referral														Total
			Aug 2015	Sep 2015	Oct 2015	Nov 2015	Dec 2015	Jan 2016	Feb 2016	Mar 2016	Apr 2016	May 2016	Jun 2016	Jul 2016	Jul 2016	
SUSSEX	Sussex	CPS	71	73	83	72	68	82	83	76	77	71	68	74	69	967
		CWS	13	16	21	31	27	13	30	29	17	17	23	16	18	271
		Total	84	89	104	103	95	95	113	105	94	88	91	90	87	1238
	County Totals	CPS	71	73	83	72	68	82	83	76	77	71	68	74	69	967
		CWS	13	16	21	31	27	13	30	29	17	17	23	16	18	271
Total		84	89	104	103	95	95	113	105	94	88	91	90	87	1238	
UNION	Union Central	CPS	52	65	67	64	71	74	85	78	89	105	67	60	55	932
		CWS	26	24	24	14	27	32	29	30	24	23	29	24	27	333
		Total	78	89	91	78	98	106	114	108	113	128	96	84	82	1265
	Union East	CPS	49	67	74	68	91	75	78	99	99	100	79	67	66	1012
		CWS	23	27	35	26	34	25	30	25	28	25	28	26	23	355
		Total	72	94	109	94	125	100	108	124	127	125	107	93	89	1367
	Union West	CPS	50	70	77	58	65	65	79	84	73	87	60	57	49	874
		CWS	15	23	27	27	30	28	30	34	23	33	32	21	24	347
		Total	65	93	104	85	95	93	109	118	96	120	92	78	73	1221
	County Totals	CPS	151	202	218	190	227	214	242	261	261	292	206	184	170	2818
		CWS	64	74	86	67	91	85	89	89	75	81	89	71	74	1035
		Total	215	276	304	257	318	299	331	350	336	373	295	255	244	3853
	WARREN	Warren	CPS	71	81	87	58	55	72	64	60	68	74	67	49	68
CWS			23	20	20	23	23	21	23	17	31	32	21	13	10	277
Total			94	101	107	81	78	93	87	77	99	106	88	62	78	1151
County Totals		CPS	71	81	87	58	55	72	64	60	68	74	67	49	68	874
		CWS	23	20	20	23	23	21	23	17	31	32	21	13	10	277
	Total	94	101	107	81	78	93	87	77	99	106	88	62	78	1151	
County CPS Referral Total		CPS	3,714	4,477	4,797	4,098	4,252	4,378	4,657	4,632	4,714	4,882	4,237	3,453	3,653	55,944
County CWS Referral Total		CWS	1,220	1,446	1,572	1,430	1,492	1,526	1,573	1,618	1,494	1,573	1,411	1,146	1,254	18,755
County Referral Total		Total	4,934	5,923	6,369	5,528	5,744	5,904	6,230	6,250	6,208	6,455	5,648	4,599	4,907	74,699
Central Region IAIU	CPS	41	53	52	56	62	44	53	46	59	55	53	33	54	661	
	CWS	0	0	0	0	0	0	0	0	0	0	0	0	0	0	
	Total	41	53	52	56	62	44	53	46	59	55	53	33	54	661	
Metro Region IAIU	CPS	30	36	50	48	46	43	60	64	60	68	61	36	32	634	
	CWS	0	0	0	0	0	0	0	0	0	0	0	0	0	0	
	Total	30	36	50	48	46	43	60	64	60	68	61	36	32	634	
Northern Region IAIU	CPS	43	45	66	58	44	58	58	66	71	70	66	27	45	717	
	CWS	0	0	0	0	0	0	0	0	0	0	0	0	0	0	
	Total	43	45	66	58	44	58	58	66	71	70	66	27	45	717	
Southern Region IAIU	CPS	59	60	83	72	61	79	64	76	90	73	92	44	72	925	
	CWS	0	0	0	0	0	0	0	0	0	0	0	0	0	0	
	Total	59	60	83	72	61	79	64	76	90	73	92	44	72	925	
IAIU CPS Subtotal		CPS	173	194	251	234	213	224	235	252	280	266	272	140	203	2,937
IAIU CWS Subtotal		CWS	0	0	0	0	0	0	0	0	0	0	0	0	0	0
IAIU Subtotal		Total	173	194	251	234	213	224	235	252	280	266	272	140	203	2,937
County and IAIU CPS Subtotal		CPS	3,887	4,671	5,048	4,332	4,465	4,602	4,892	4,884	4,994	5,148	4,509	3,593	3,856	58,881
County and IAIU CWS Subtotal		CWS	1,220	1,446	1,573	1,430	1,492	1,526	1,573	1,618	1,494	1,573	1,411	1,146	1,254	18,756
Unable to Determine⁽¹⁾		Total	124	153	136	131	114	128	126	165	115	149	140	110	137	1,728
Other Offices		Total	3	1	1	1	3	1	5	2	4	1	3	1	1	27
Grand Total		Total	5,234	6,271	6,758	5,894	6,074	6,257	6,596	6,669	6,607	6,871	6,063	4,850	5,248	79,392

⁽¹⁾CPS Reports or CWS Referrals not assigned to an office through the Assignment Designee, but were assigned to an office for an assessment or investigation.