

NJ Department
of
Children and Families

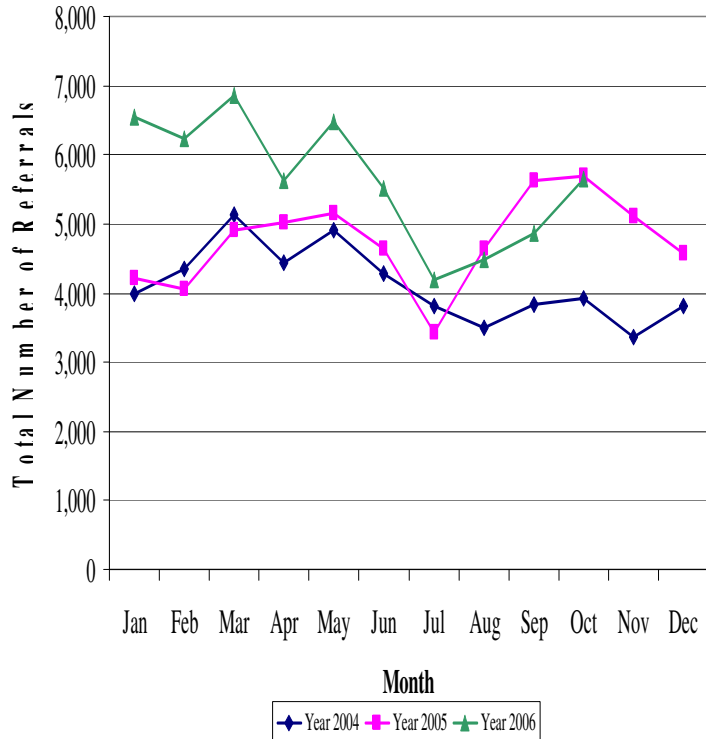
Update

November 2006

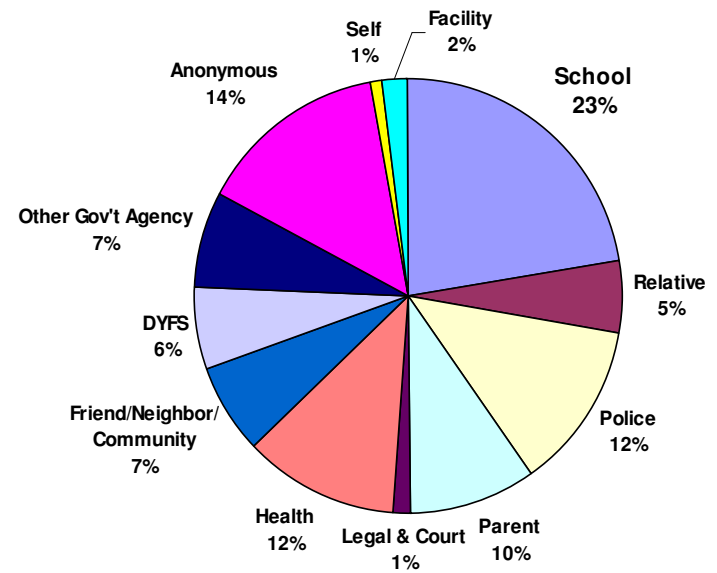
Initial Response

2006 Brought Historic Surge in Reporting, Particularly from Schools & Medical Sources

New Jersey Department of Children and Families
Referrals to DYFS Offices



Referral Sources
12 Months - Sep 05 thru Oct 06 Total = 66,096



Caseloads

Investing in Caseload Carrying Staff to Support Safety, Well-Being & Permanency for Children in Child Welfare

Initial Standards

Average per office by type of staff

Intake Staff

*15 families
10 new referrals*

Permanency Staff

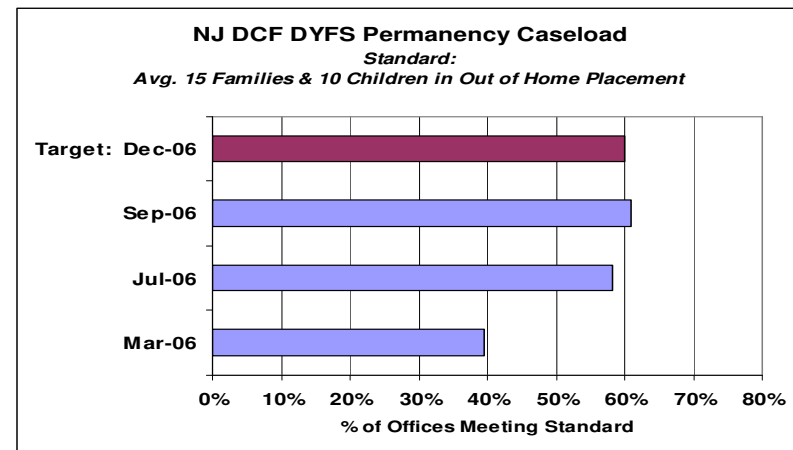
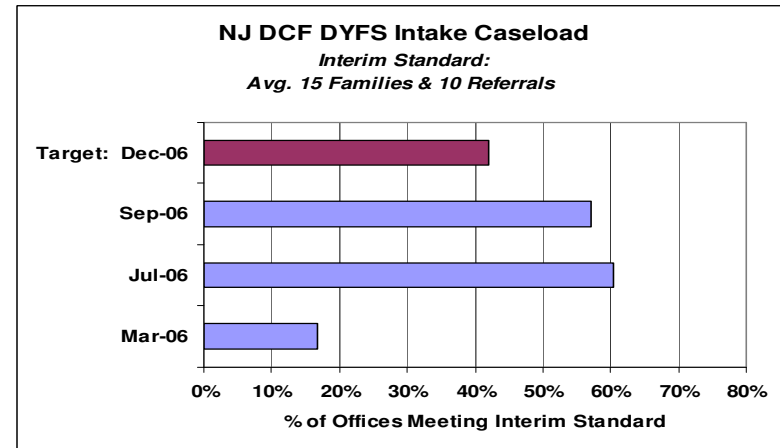
*15 families
10 children in out of home placement*

Targets:

By December 2006 of 44 DYFS Field Offices

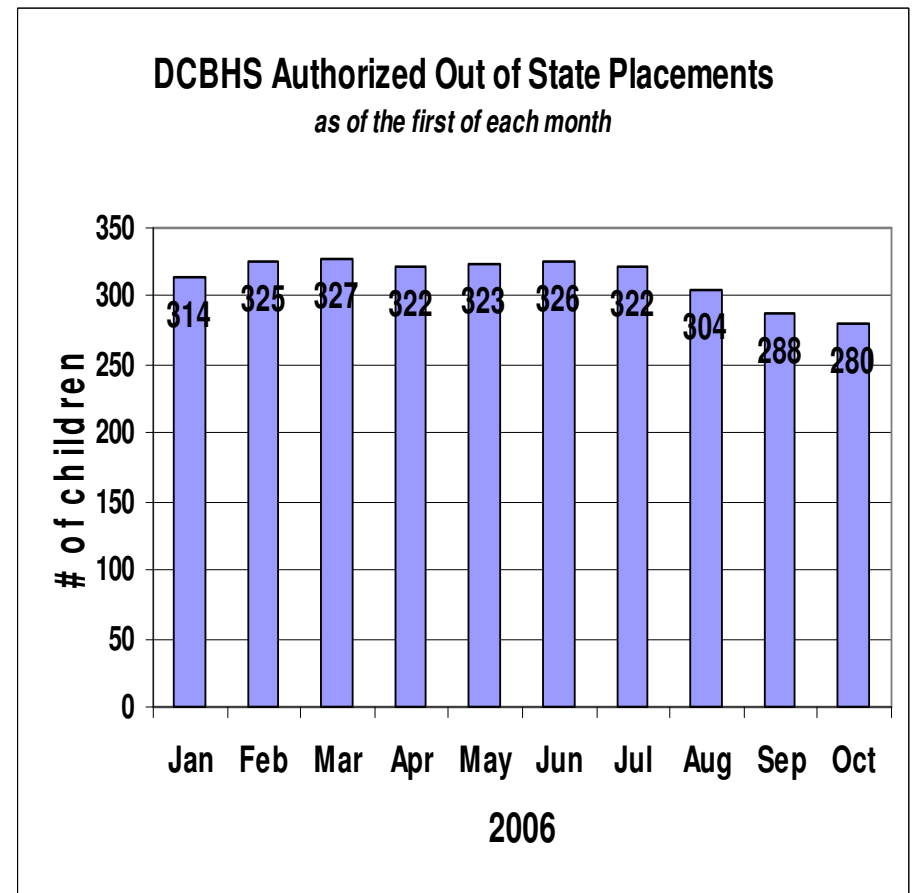
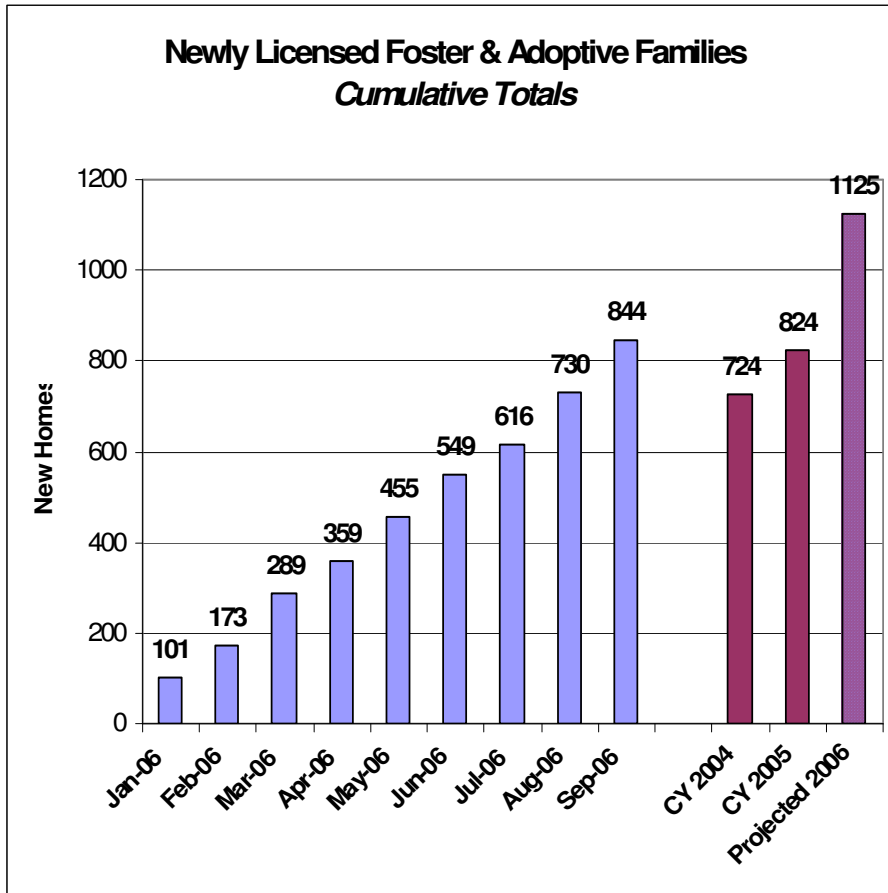
42% of offices meet intake standard
60% of offices meet permanency standard

Note: Intake compliance can fluctuate as it is sensitive to surges in calls to DYFS child protection hotline. Such surges can also impact on permanency – but to a lesser degree & more slowly, with a lag time of two or more months.



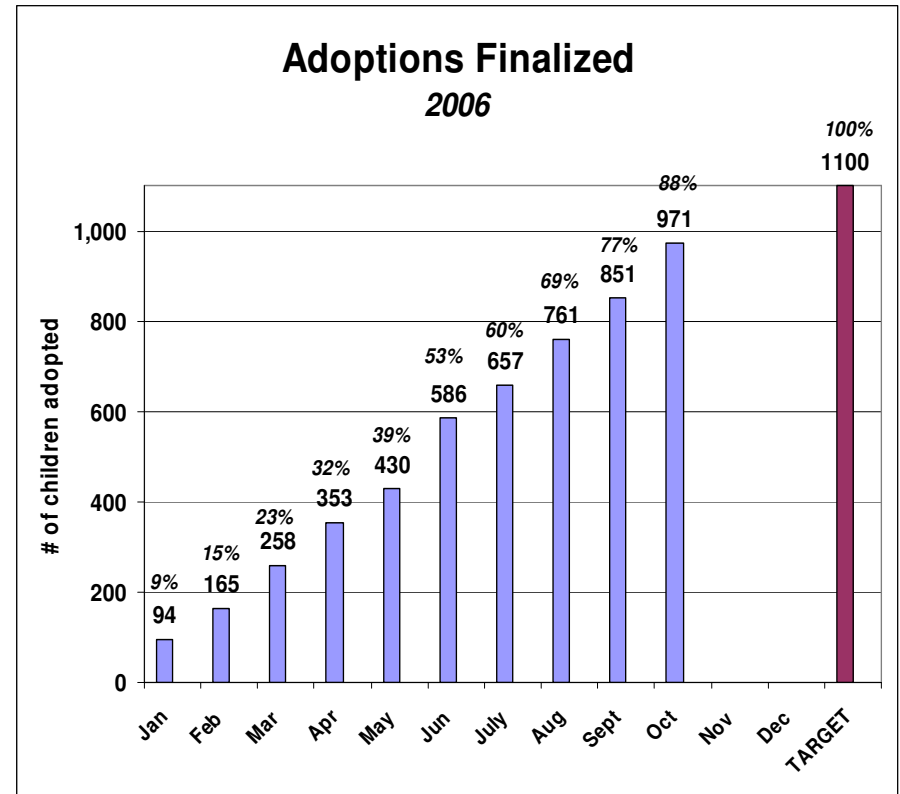
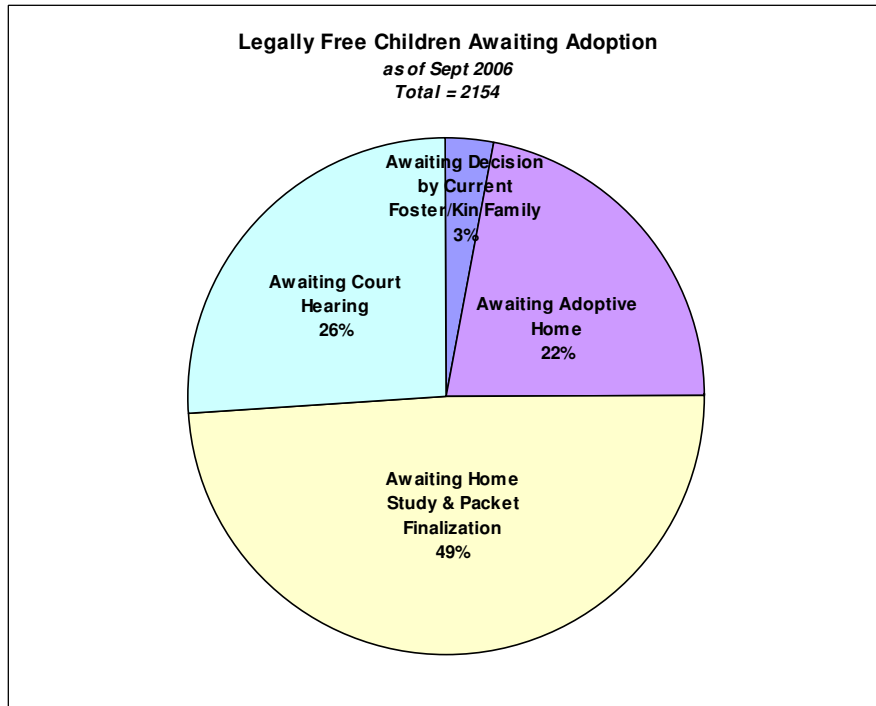
Placements

Building In-State Capacity & Tracking Out-of-State Use



Adoptions

Re-Building Capacity to Find Permanent Homes



Note: Adoption #s each month subject to change & increase due to delayed data entry