

**NJ Department of Children and Families
Data Update
5/18/07**

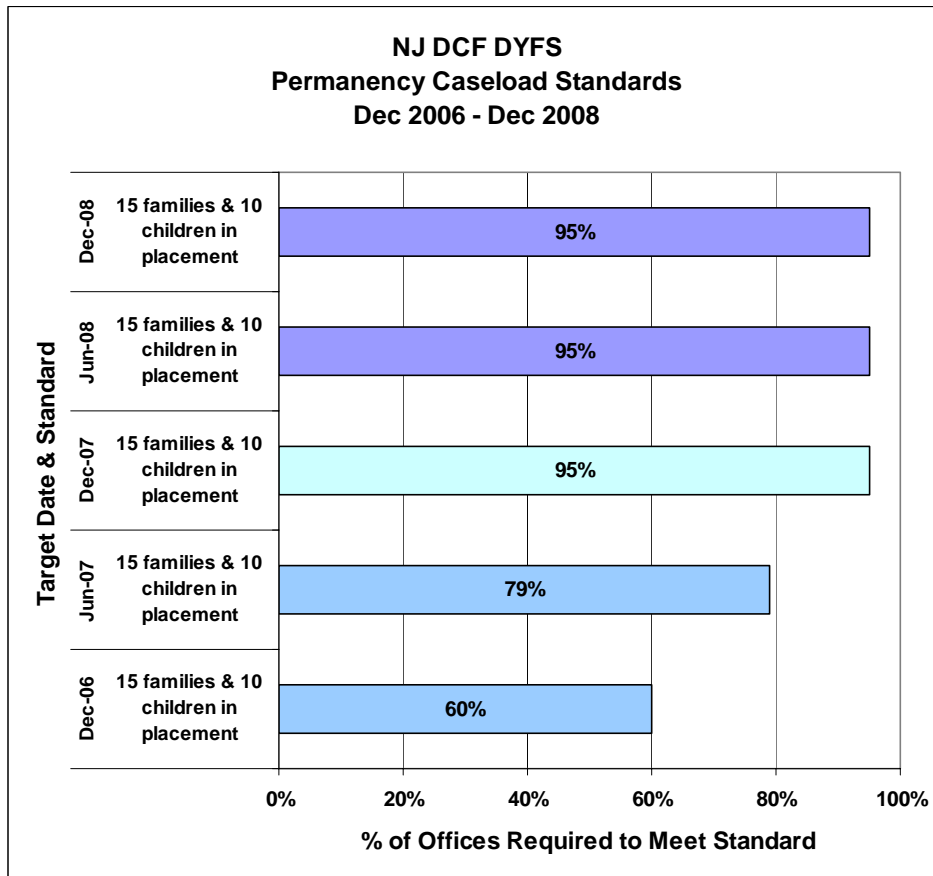
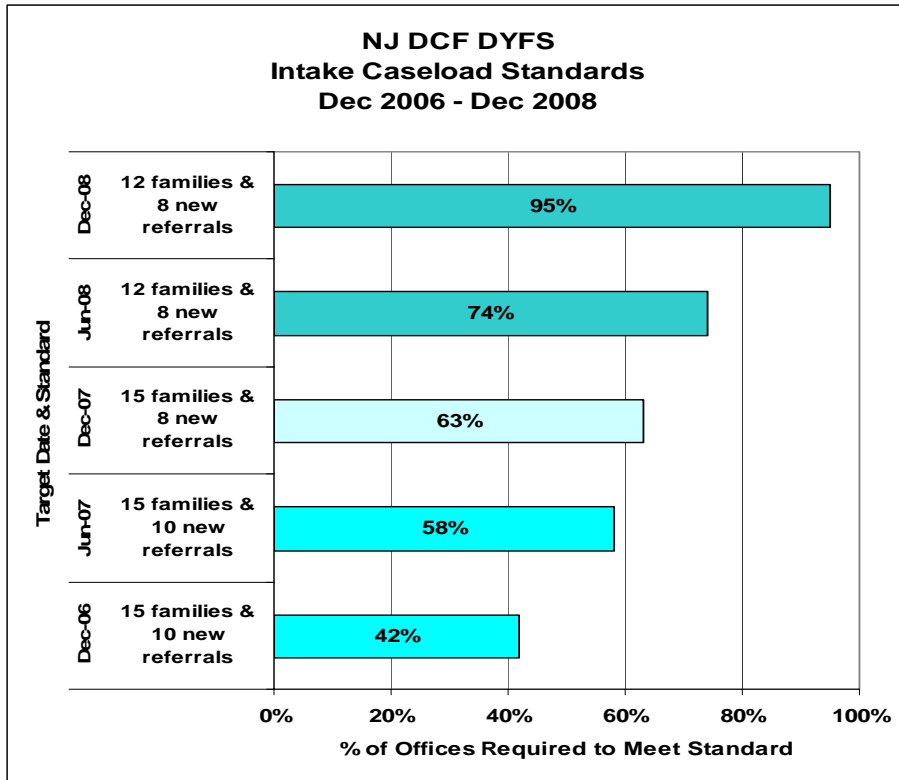
Table of Contents

Caseloads	3
Hotline Referrals	16
IAIU	23
Abuse/Neglect Substantiations	27
Adoptions and KLG	32
DYFS Demographics	37
Resource Families	48
Outcome Data	51

CASELOADS

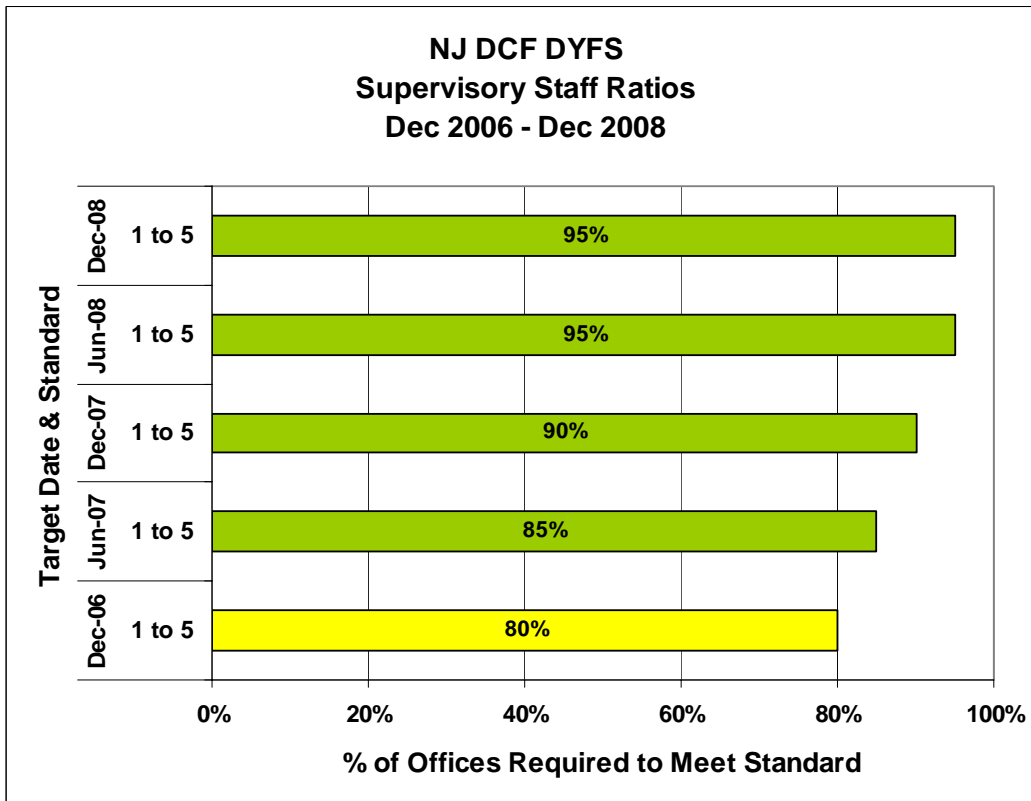
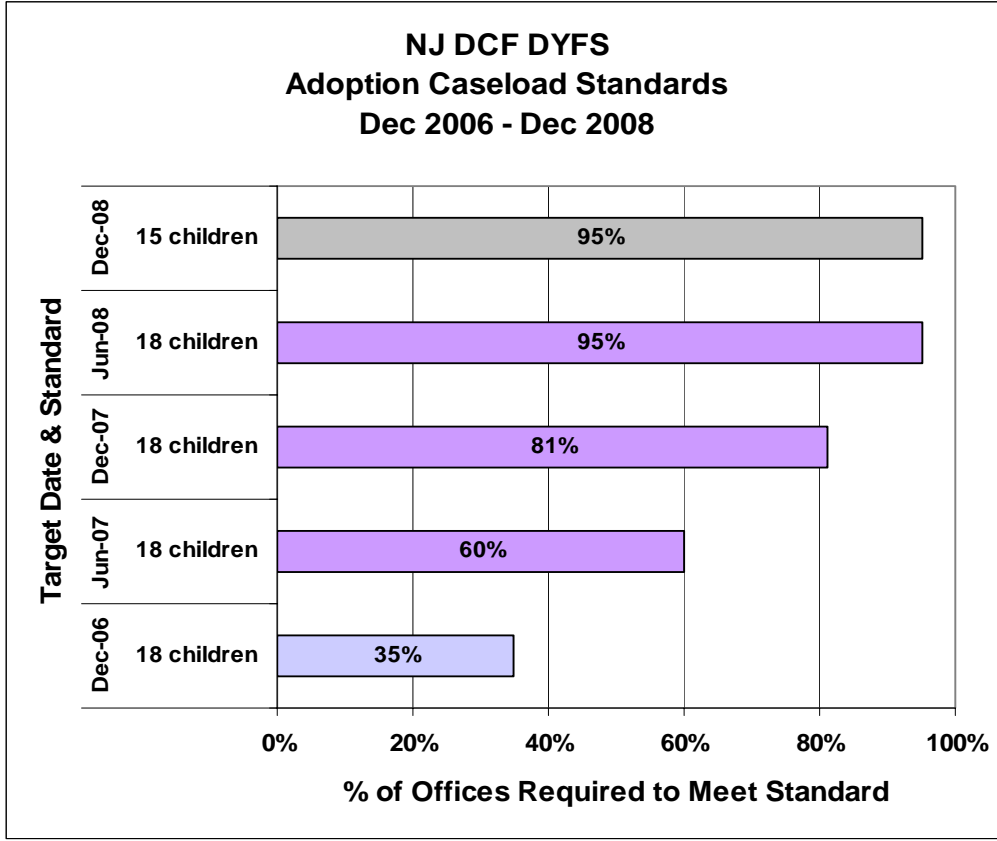
Caseload MSA* Targets

*Modified Settlement Agreement



Caseload MSA* Targets

*Modified Settlement Agreement



DCF Overview of Caseload Compliance

Office	Intake	Perm	Adopt	Supervisor Ratio
Atlantic East	Yes	Yes	Yes	Yes
Atlantic West	Yes	Yes	Yes	Yes
Bergen Central	No	Yes	Yes	Yes
Bergen South	Yes	Yes	No	Yes
Burlington East	No	Yes	Yes	Yes
Burlington West	Yes	Yes	Yes	Yes
Camden Central	Yes	Yes	Yes	Yes
Camden East	Yes	No	Yes	Yes
Camden North	Yes	Yes	Yes	Yes
Camden South	No	No	Yes	Yes
Cape May	No	Yes	No	Yes
Cumberland East	No	Yes	No	No
Cumberland West	No	Yes		Yes
Essex Central	Yes	No	Yes	No
Essex North	Yes	No	Yes	No
Essex South	Yes	Yes	Yes	Yes
Newark Center City	No	No		Yes
Newark Northeast	Yes	Yes		No
Newark South	No	No		Yes
Newark West/Adoption			No	No
Gloucester East	No	Yes	Yes	No
Gloucester West	Yes	Yes	Yes	Yes
Hudson Central	Yes	No	Yes	No
Hudson North	No	No	Yes	Yes
Hudson South	No	No	Yes	No
Hudson West	Yes	Yes	Yes	Yes
Hunterdon	No	Yes	No	Yes
Mercer North	Yes	Yes	No	Yes
Mercer South	Yes	Yes	No	Yes
Middlesex Central	Yes	Yes	No	No
Middlesex Coastal	Yes	Yes		No
Middlesex West	Yes	Yes	Yes	No
Monmouth North	Yes	Yes	Yes	Yes
Monmouth South	Yes	Yes	Yes	Yes
Morris	No	Yes	Yes	No
Ocean North	Yes	Yes	Yes	No
Ocean South	Yes	Yes	Yes	No
Passaic Central	No	Yes	Yes	Yes
Passaic North	Yes	No	Yes	Yes
Salem	Yes	Yes	No	No
Somerset	No	No	No	Yes
Sussex	No	Yes	No	No
Union Central	No	Yes	Yes	Yes
Union East	Yes	Yes	Yes	Yes
Union West	Yes	Yes	No	Yes
Warren	No	No	No	Yes
TOTALS	60%	71%	68%	65%

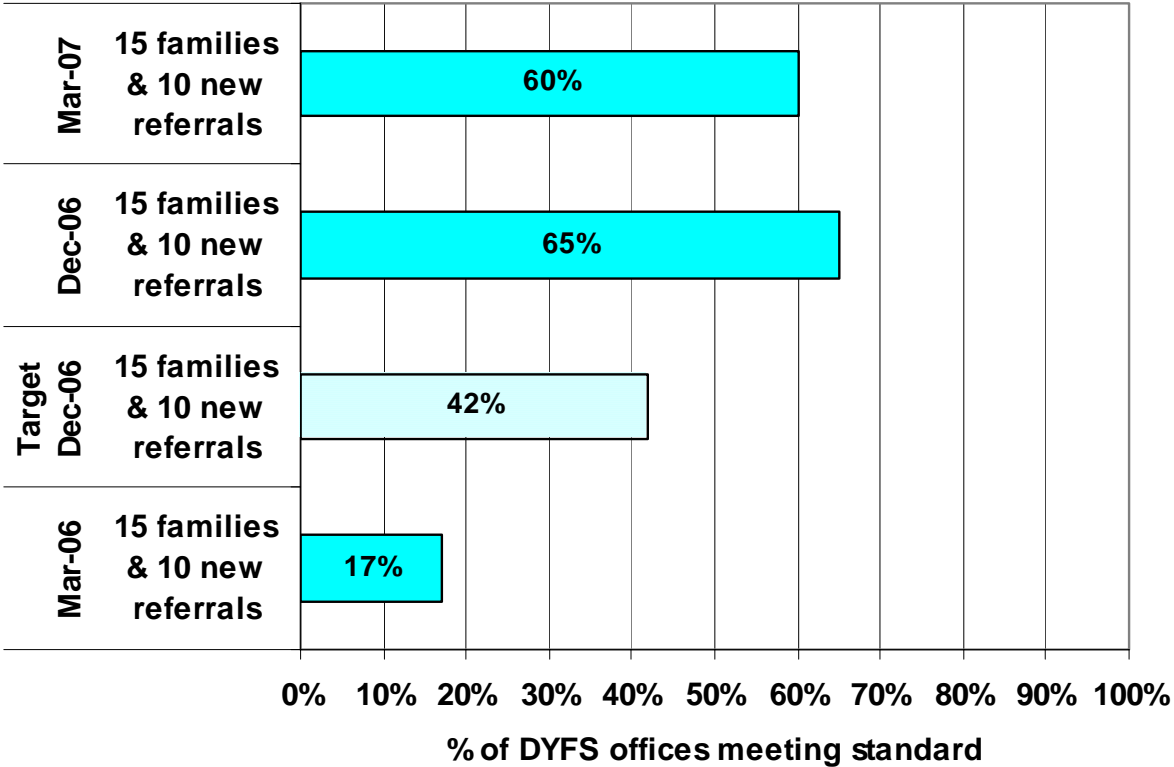
DCF Caseload Carrying Staff (excluding trainees)

Office	Intake (Mar 07)	Perm (Mar 07)	Adoption (Mar 07)	TOTAL (Mar 07)
Atlantic East	15	17	5	37
Atlantic West	10	13	2	25
Bergen Central	14	15	5	34
Bergen South	19	33	5	57
Burlington East	14	29	4	47
Burlington West	11	23	4	38
Camden Central	15	38	6	59
Camden East	19	34	4	57
Camden North	12	40	4	56
Camden South	16	27	4	47
Cape May	7	20	2	29
Cumberland East	7	11	4	22
Cumberland West	13	21	0	34
Essex Central	16	36	12	64
Essex North	14	25	5	44
Essex South	13	27	5	45
Newark Center City	15	27	0	42
Newark Northeast	17	52	0	69
Newark South	8	40	0	48
Newark West/Adoption	0	0	33	33
Gloucester East	11	15	2	28
Gloucester West	10	18	3	31
Hudson Central	11	21	5	37
Hudson North	14	19	4	37
Hudson South	14	17	3	34
Hudson West	12	19	4	35
Hunterdon	4	7	1	12
Mercer North	15	28	6	49
Mercer South	17	27	4	48
Middlesex Central	9	12	9	30
Middlesex Coastal	17	59	0	76
Middlesex West	25	42	4	71
Monmouth North	18	26	5	49
Monmouth South	16	28	5	49
Morris	24	20	6	50
Ocean North	21	33	7	61
Ocean South	22	28	5	55
Passaic Central	20	33	5	58
Passaic North	17	19	3	39
Salem	11	21	6	38
Somerset	12	12	2	26
Sussex	10	13	2	25
Union Central	10	28	4	42
Union East	13	31	8	52
Union West	14	25	7	46
Warren	11	11	1	23
TOTALS	633	1140	215	1988

Intake Caseload Standards Actual and Target Comparison

NJ DCF DYFS Intake Caseloads

Note: March is peak month for new referrals



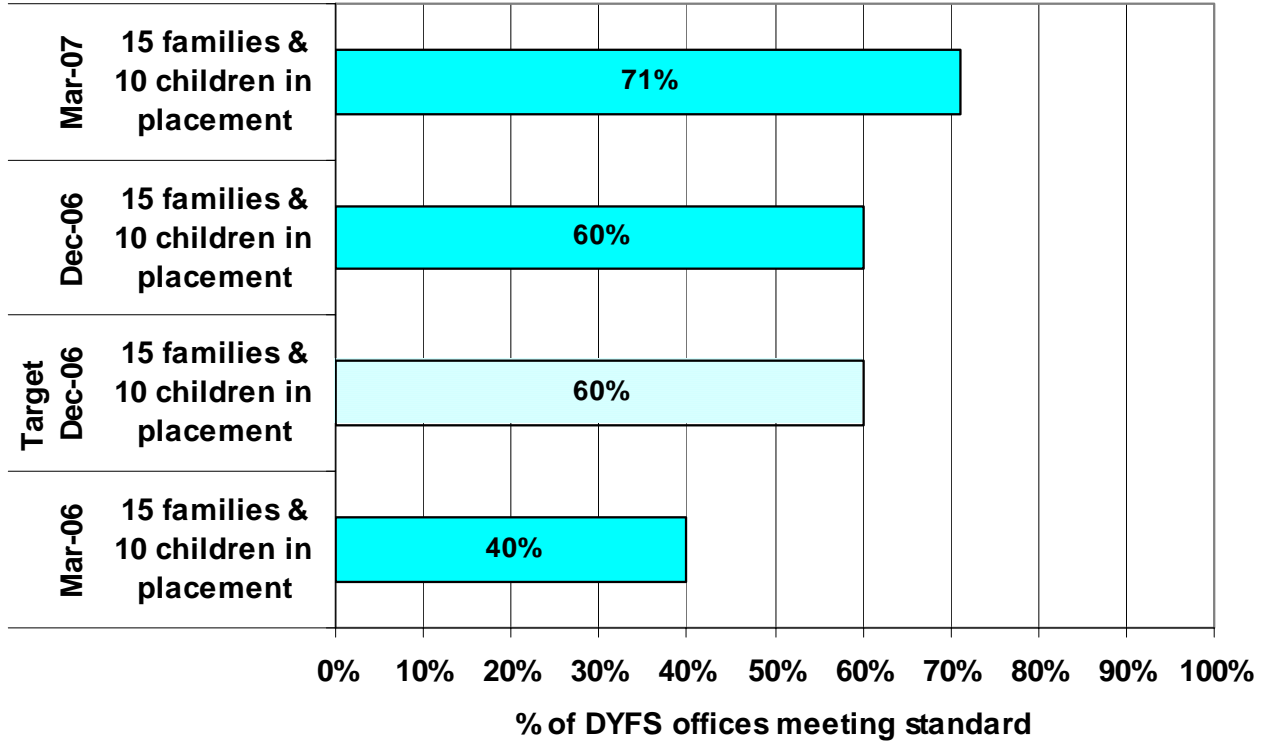
Intake Caseloads by Local Office

Office	Intake Assignments	Intake Families	Intake Avg Assignments	Intake Avg Families	Intake (Mar 07)
Atlantic East	132	153	9	10	Yes
Atlantic West	93	131	9	13	Yes
Bergen Central	123	253	9	18	No
Bergen South	148	232	8	12	Yes
Burlington East	67	267	5	19	No
Burlington West	101	165	9	15	Yes
Camden Central	99	99	7	7	Yes
Camden East	111	205	6	11	Yes
Camden North	50	91	4	8	Yes
Camden South	139	280	9	18	No
Cape May	74	120	11	17	No
Cumberland East	47	138	7	20	No
Cumberland West	104	230	8	18	No
Essex Central	101	180	6	11	Yes
Essex North	81	113	6	8	Yes
Essex South	39	86	3	7	Yes
Newark Center City	53	300	4	20	No
Newark Northeast	74	187	4	11	Yes
Newark South	89	144	11	18	No
Newark West/Adoption					
Gloucester East	56	183	5	17	No
Gloucester West	69	132	7	13	Yes
Hudson Central	36	160	3	15	Yes
Hudson North	110	218	8	16	No
Hudson South	82	246	7	21	No
Hudson West	81	142	7	12	Yes
Hunterdon	20	63	5	16	No
Mercer North	82	138	5	9	Yes
Mercer South	99	108	6	6	Yes
Middlesex Central	50	107	6	12	Yes
Middlesex Coastal	104	160	6	9	Yes
Middlesex West	157	155	6	6	Yes
Monmouth North	150	206	8	11	Yes
Monmouth South	124	228	8	14	Yes
Morris	158	446	7	19	No
Ocean North	147	210	7	10	Yes
Ocean South	120	277	5	13	Yes
Passaic Central	149	333	7	17	No
Passaic North	156	255	9	15	Yes
Salem	60	143	5	13	Yes
Somerset	107	320	9	27	No
Sussex	113	127	11	13	No
Union Central	67	230	7	23	No
Union East	119	179	9	14	Yes
Union West	84	127	6	9	Yes
Warren	81	247	7	22	No
TOTALS	4306	8514	7	13	60%

Permanency Caseload Standards Actual and Target Comparison

NJ DCF DYFS Permanency Caseloads

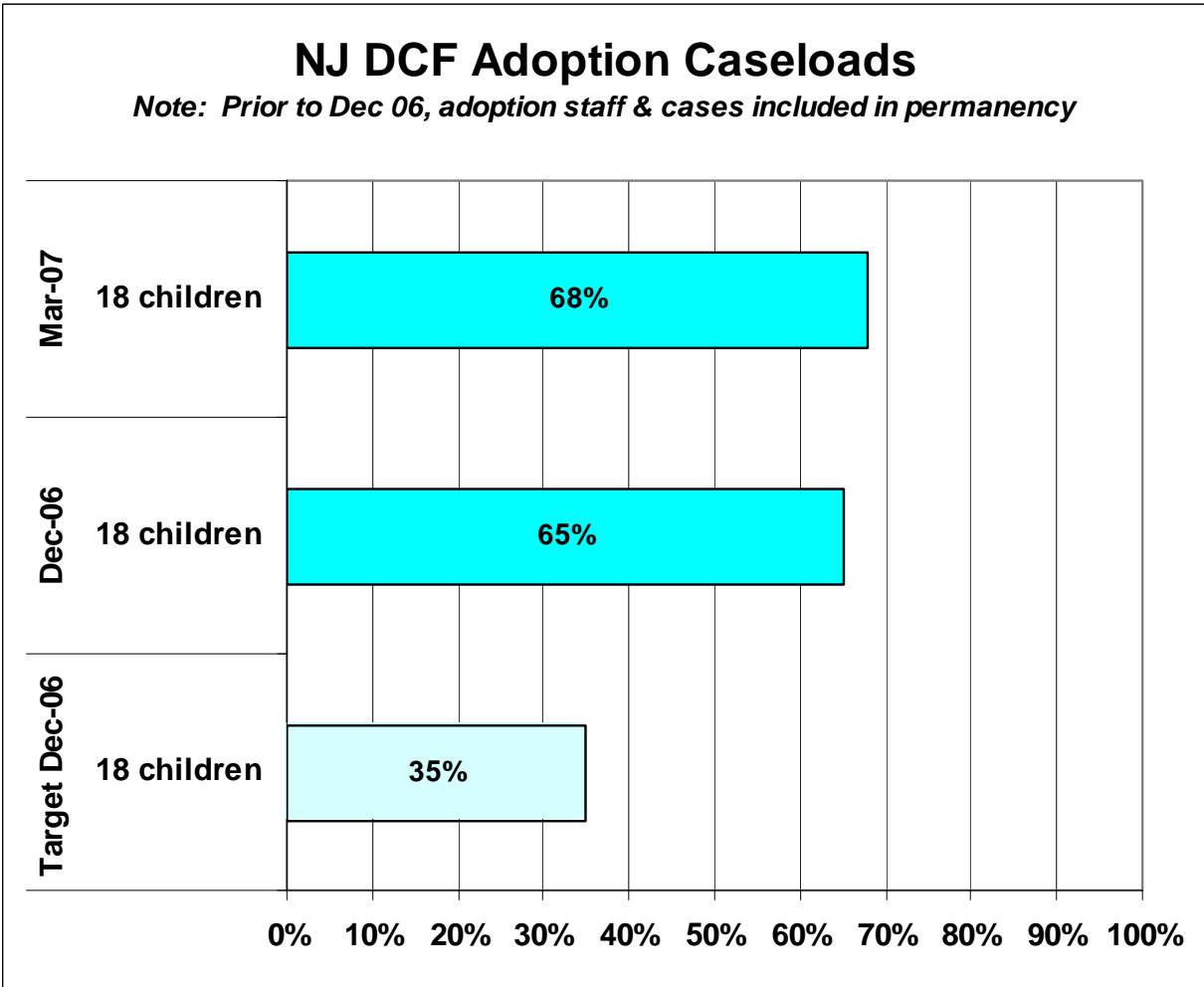
Note: Adoption staff and cases included in Permanency in Mar 06



Permanency Caseloads by Local Office

Office	Perm Children in Care	Perm Families	Perm Avg Children in Care	Perm Avg Families	Perm (Mar 07)
Atlantic East	102	244	6	14	Yes
Atlantic West	76	186	6	14	Yes
Bergen Central	80	228	5	15	Yes
Bergen South	193	470	6	14	Yes
Burlington East	142	370	5	13	Yes
Burlington West	117	408	5	18	Yes
Camden Central	147	323	4	9	Yes
Camden East	196	554	6	16	No
Camden North	166	404	4	10	Yes
Camden South	117	443	4	16	No
Cape May	101	272	5	14	Yes
Cumberland East	76	128	7	12	Yes
Cumberland West	141	295	7	14	Yes
Essex Central	318	593	9	16	No
Essex North	105	394	4	16	No
Essex South	94	362	3	13	Yes
Newark Center City	255	582	9	22	No
Newark Northeast	327	514	6	10	Yes
Newark South	393	870	10	22	No
Newark West/Adoption					
Gloucester East	79	223	5	15	Yes
Gloucester West	75	219	4	12	Yes
Hudson Central	131	418	6	20	No
Hudson North	94	333	5	18	No
Hudson South	146	385	8	20	No
Hudson West	67	187	4	10	Yes
Hunterdon	27	55	4	8	Yes
Mercer North	157	348	6	12	Yes
Mercer South	118	301	4	11	Yes
Middlesex Central	45	128	4	11	Yes
Middlesex Coastal	208	551	4	9	Yes
Middlesex West	158	453	4	1	Yes
Monmouth North	220	360	8	14	Yes
Monmouth South	162	296	6	11	Yes
Morris	96	307	5	15	Yes
Ocean North	257	494	8	15	Yes
Ocean South	145	308	5	11	Yes
Passaic Central	221	347	7	11	Yes
Passaic North	122	299	6	16	No
Salem	85	247	4	12	Yes
Somerset	107	242	9	20	No
Sussex	42	153	3	12	Yes
Union Central	126	386	5	14	Yes
Union East	153	358	5	12	Yes
Union West	190	314	8	13	Yes
Warren	70	217	6	20	No
TOTALS	6447	15569	6	14	71%

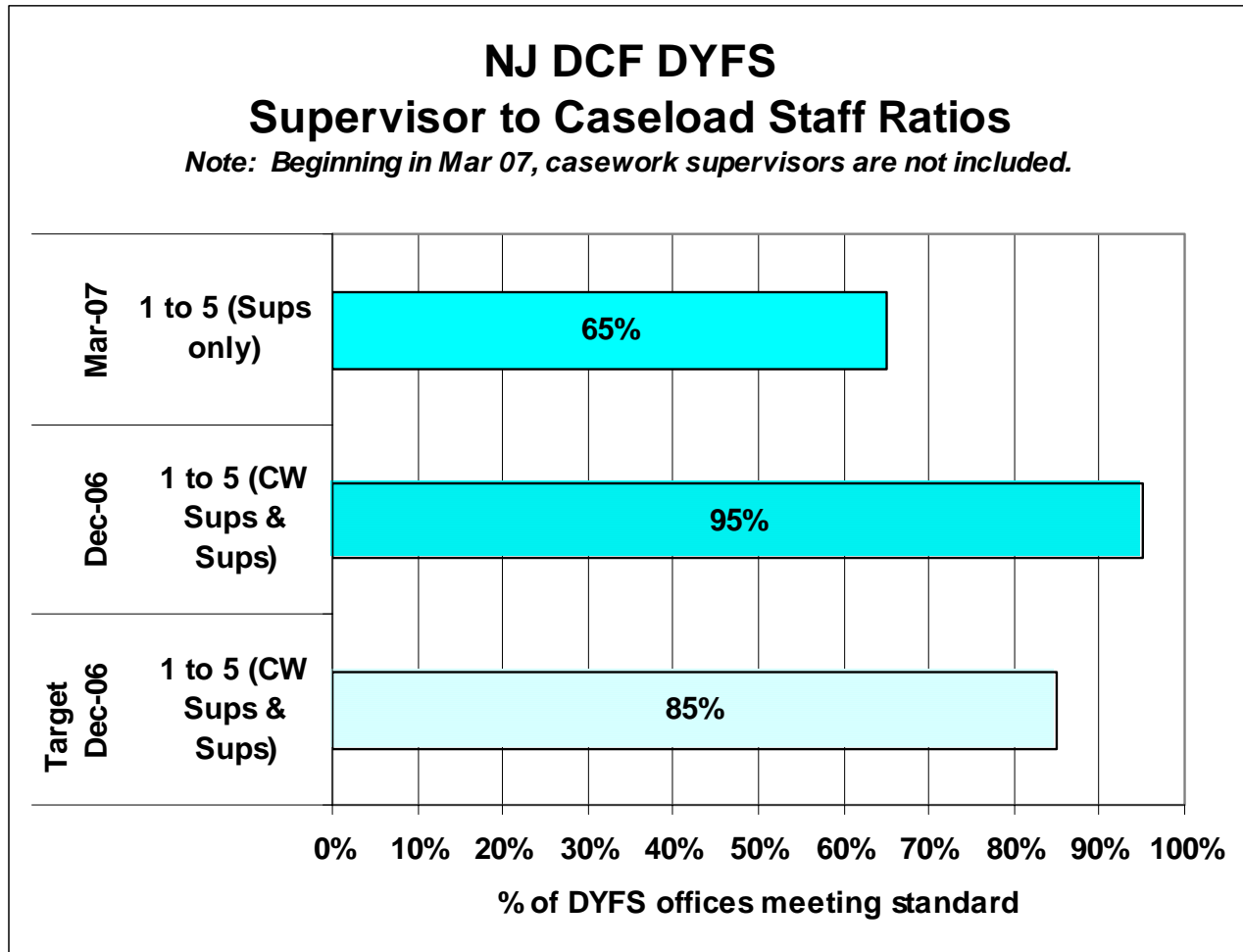
Adoption Caseload Standards Actual and Target Comparison



Adoption Caseloads by Local Office

Office	Adoption Children	Adoption Avg Children	Adoption (Mar 07)
Atlantic East	75	15	Yes
Atlantic West	27	14	Yes
Bergen Central	70	14	Yes
Bergen South	100	20	No
Burlington East	59	15	Yes
Burlington West	66	17	Yes
Camden Central	62	10	Yes
Camden East	41	10	Yes
Camden North	70	18	Yes
Camden South	57	14	Yes
Cape May	48	24	No
Cumberland East	110	28	No
Cumberland West			
Essex Central	113	9	Yes
Essex North	84	17	Yes
Essex South	55	11	Yes
Newark Center City			
Newark Northeast			
Newark South			
Newark West/Adoption	642	19	No
Gloucester East	36	18	Yes
Gloucester West	55	18	Yes
Hudson Central	65	13	Yes
Hudson North	58	15	Yes
Hudson South	40	13	Yes
Hudson West	50	13	Yes
Hunterdon	24	24	No
Mercer North	114	19	No
Mercer South	81	20	No
Middlesex Central	169	19	No
Middlesex Coastal			
Middlesex West	47	12	Yes
Monmouth North	89	18	Yes
Monmouth South	66	13	Yes
Morris	88	15	Yes
Ocean North	104	15	Yes
Ocean South	84	17	Yes
Passaic Central	73	15	Yes
Passaic North	50	17	Yes
Salem	112	19	No
Somerset	37	19	No
Sussex	50	25	No
Union Central	53	13	Yes
Union East	124	16	Yes
Union West	136	19	No
Warren	44	44	No
TOTALS	3528	16	68%

Supervisory Caseload Standards Actual and Target Comparison



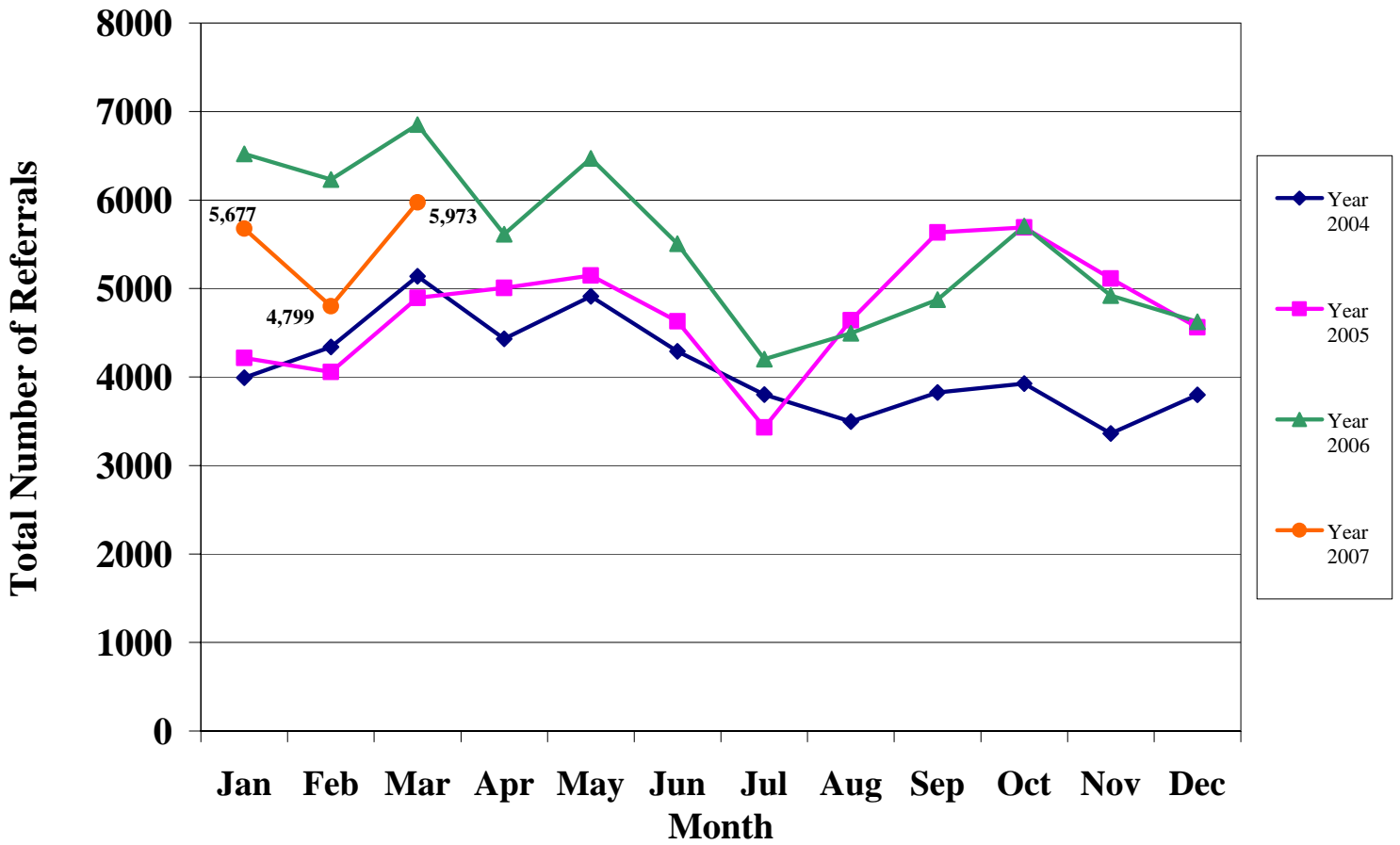
Supervisory Caseloads by Local Office

Office	Rate	Supervisor Ratio (Mar 07)
Atlantic East	5	Yes
Atlantic West	5	Yes
Bergen Central	5	Yes
Bergen South	5	Yes
Burlington East	5	Yes
Burlington West	5	Yes
Camden Central	5	Yes
Camden East	4	Yes
Camden North	4	Yes
Camden South	4	Yes
Cape May	5	Yes
Cumberland East	6	No
Cumberland West	4	Yes
Essex Central	6	No
Essex North	6	No
Essex South	4	Yes
Newark Center City	5	Yes
Newark Northeast	6	No
Newark South	5	Yes
Newark West/Adoption	6	No
Gloucester East	6	No
Gloucester West	5	Yes
Hudson Central	6	No
Hudson North	5	Yes
Hudson South	6	No
Hudson West	5	Yes
Hunterdon	4	Yes
Mercer North	4	Yes
Mercer South	5	Yes
Middlesex Central	6	No
Middlesex Coastal	6	No
Middlesex West	6	No
Monmouth North	5	Yes
Monmouth South	5	Yes
Morris	6	No
Ocean North	6	No
Ocean South	7	No
Passaic Central	5	Yes
Passaic North	5	Yes
Salem	6	No
Somerset	5	Yes
Sussex	6	No
Union Central	5	Yes
Union East	5	Yes
Union West	5	Yes
Warren	4	Yes
TOTALS	65%	

HOTLINE REFERRALS

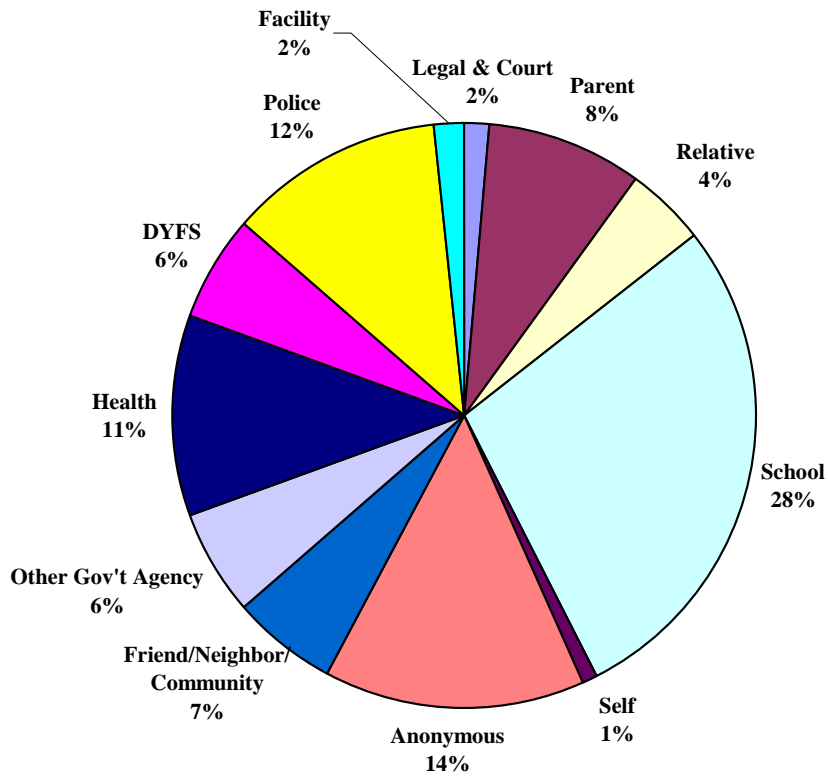
All Referrals from Hotline to DYFS Local Offices

NJ DCF
Referrals from Hotline to DYFS Field Offices

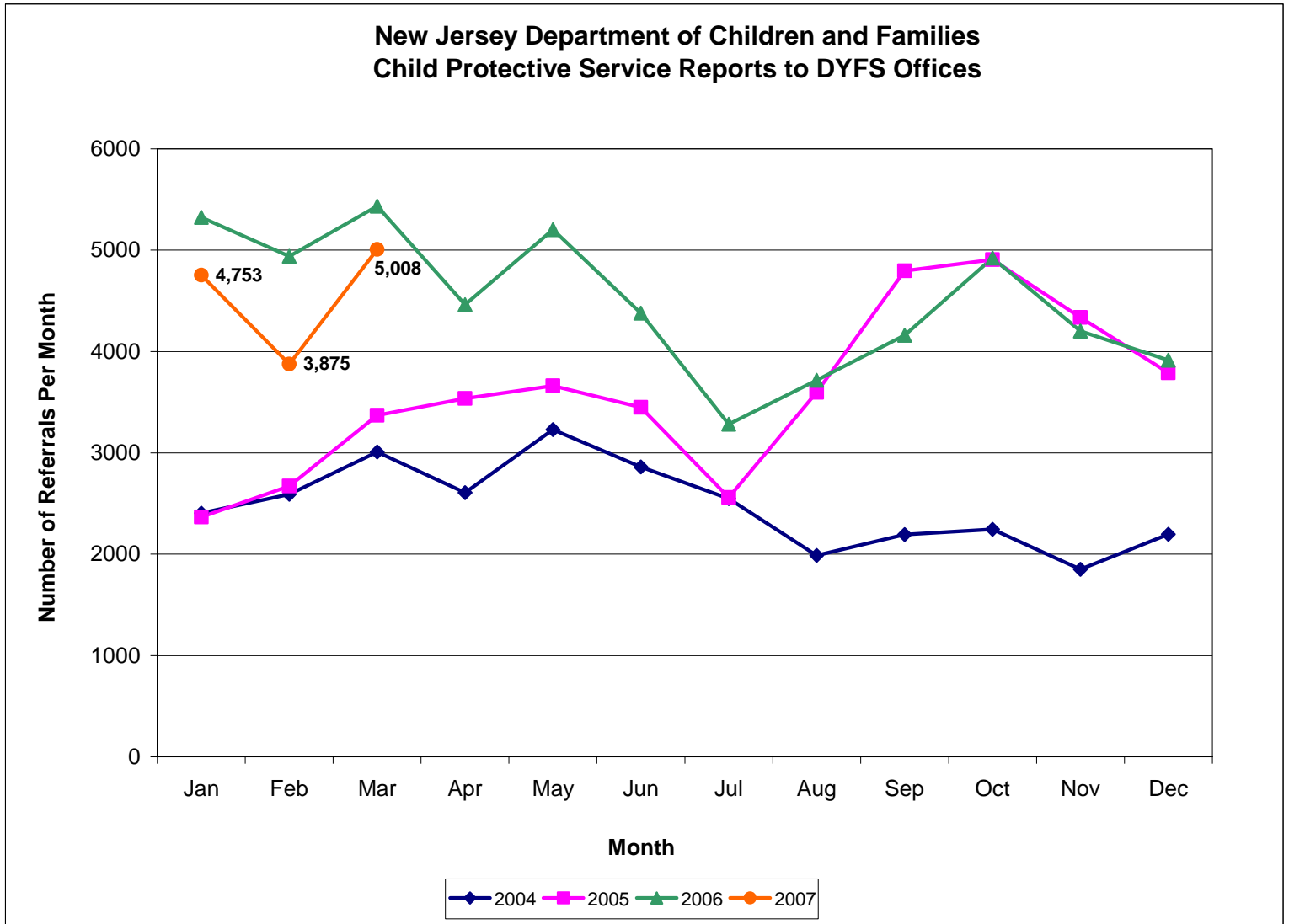


All Referrals from Hotline to DYFS Local Offices (by source)

**Referral Sources for All Reports and Requests
1st Quarter (Jan-Mar) 2007
Total = 16,449**

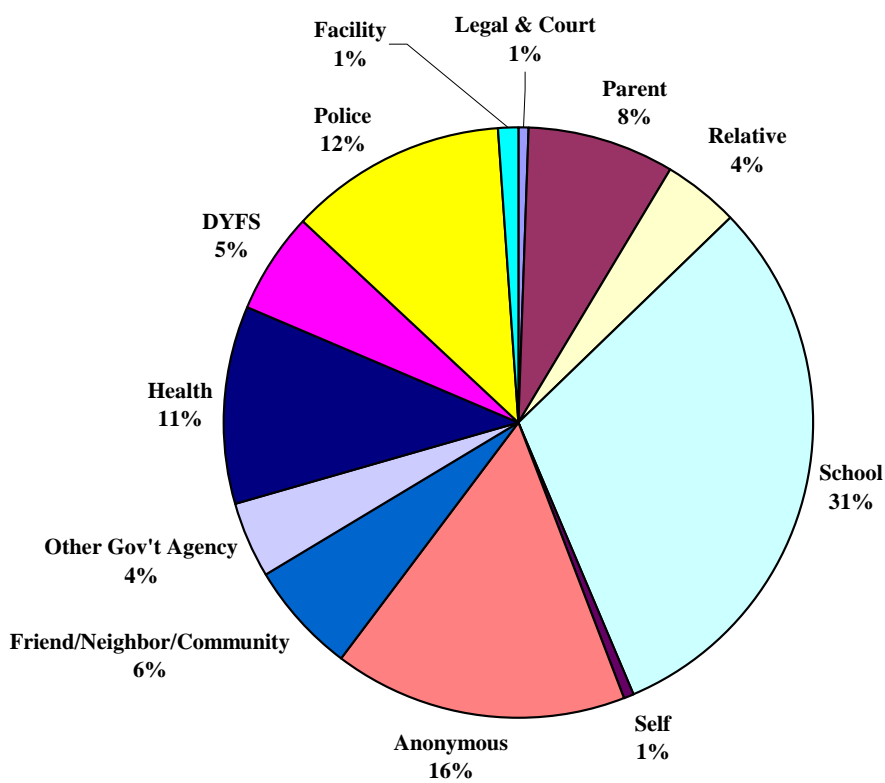


Child Protective Service Referrals from Hotline to DYFS Local Offices



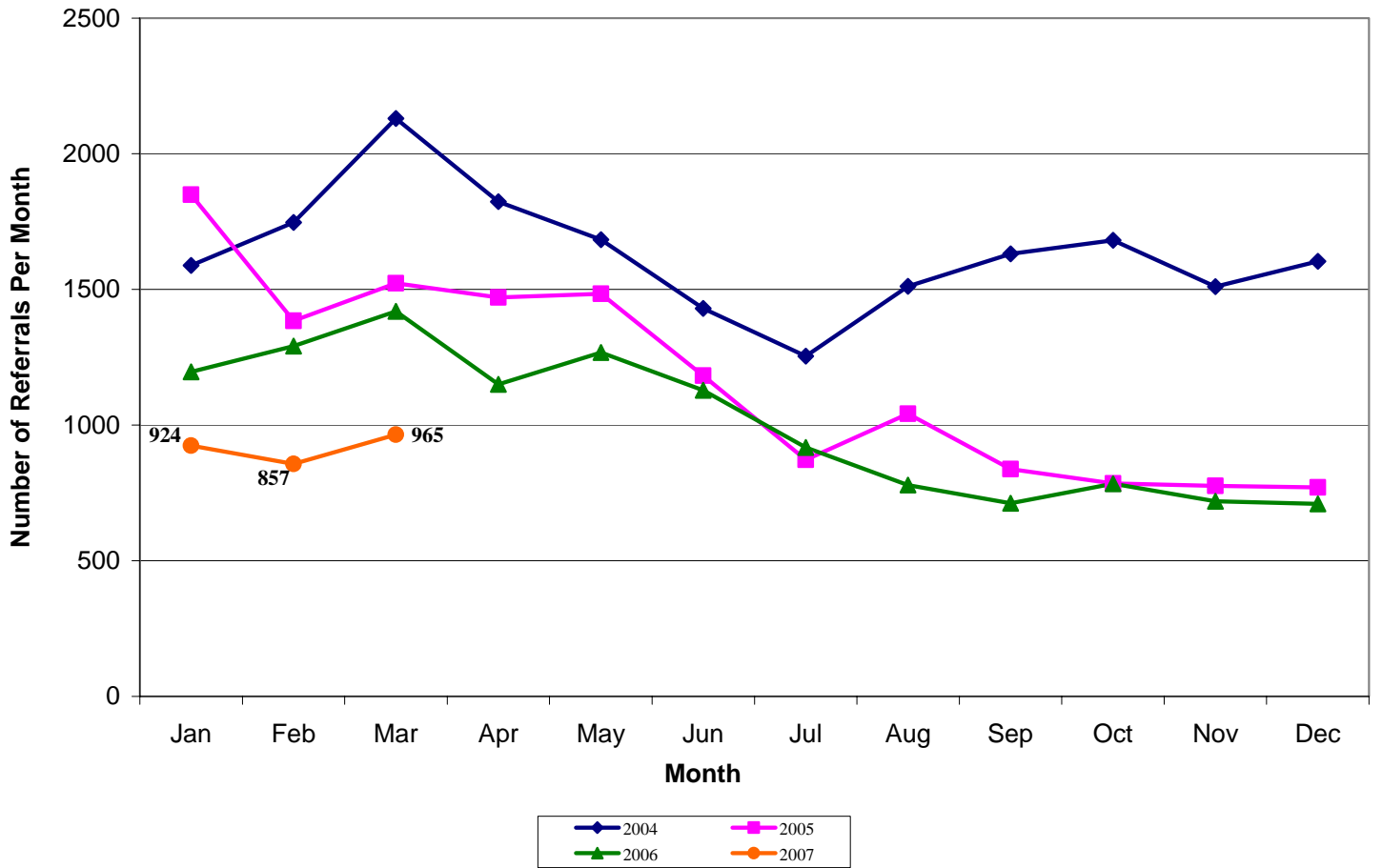
Child Protective Service Referrals from Hotline to DYFS Local Offices (by source)

Referral Source of Child Protective Service Reports
1st Quarter (Jan-Mar) 2007
Total = 13,688



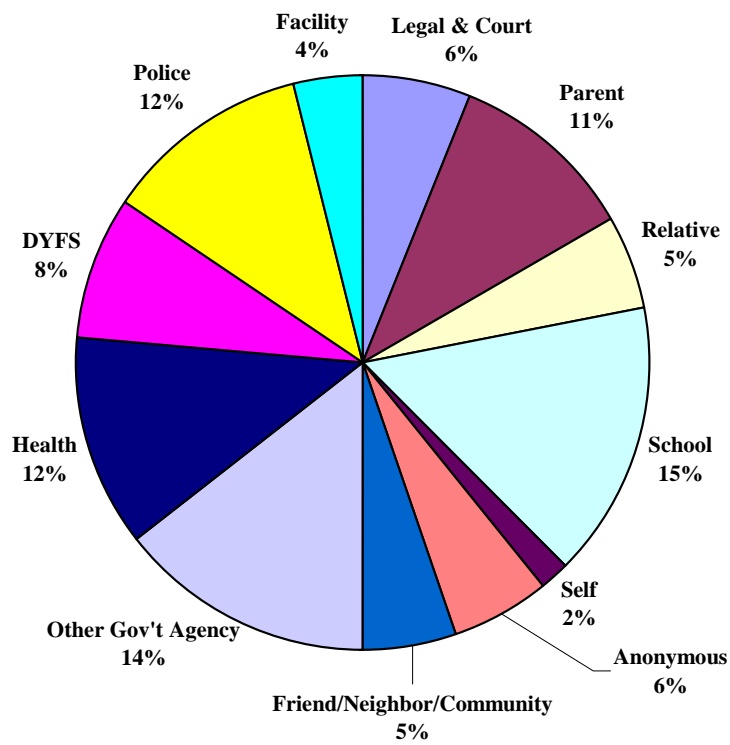
Family Service Request Referrals from Hotline to DYFS Local Offices

New Jersey Department of Children and Families
Requests for Family Services to DYFS Offices



Family Service Request Referrals from Hotline to DYFS Local Offices (by source)

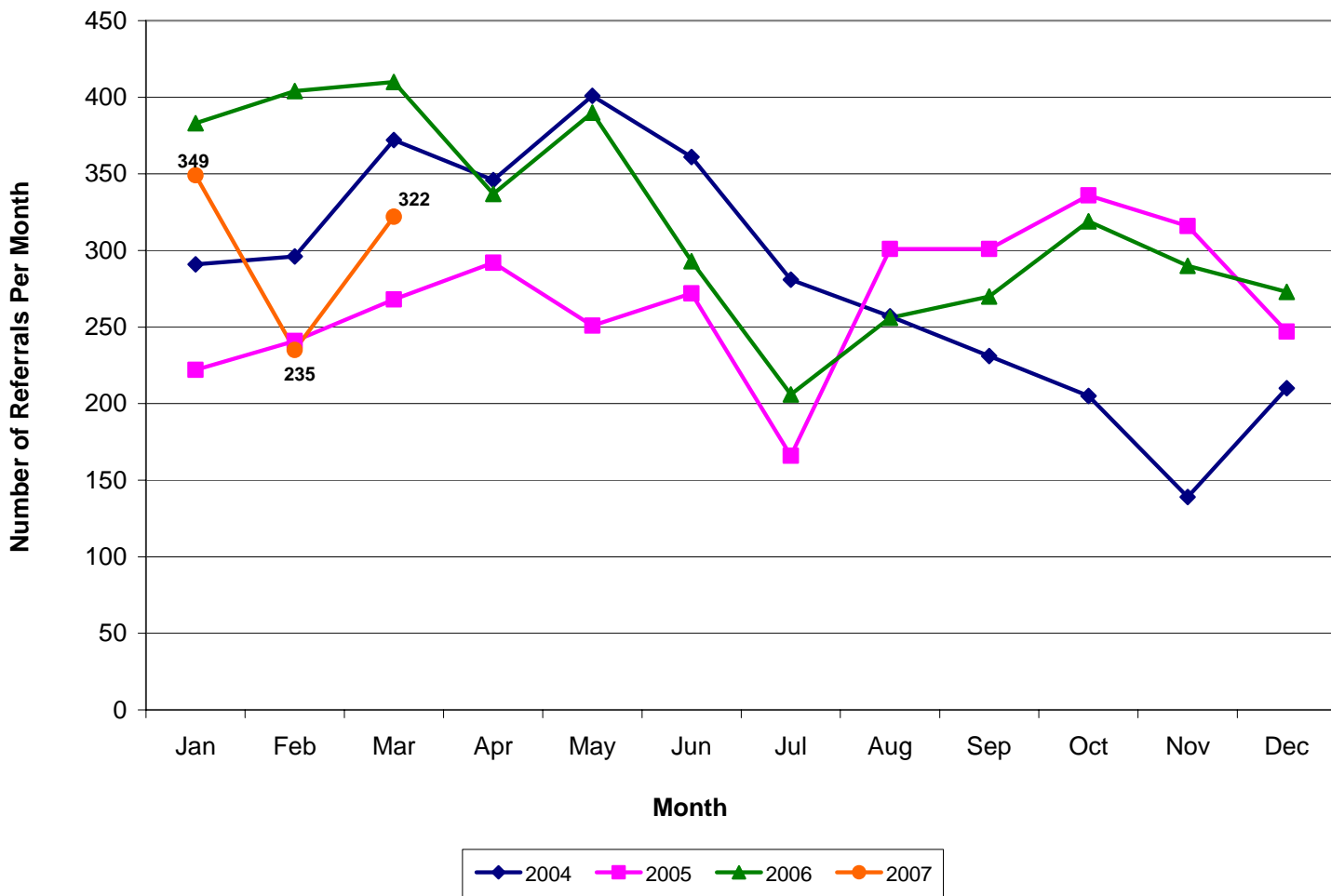
Referral Source of Requests for Family Services
1st Quarter (Jan-Mar) 2007
Total = 2,761



INSTITUTIONAL ABUSE INVESTIGATION UNIT (IAIU)

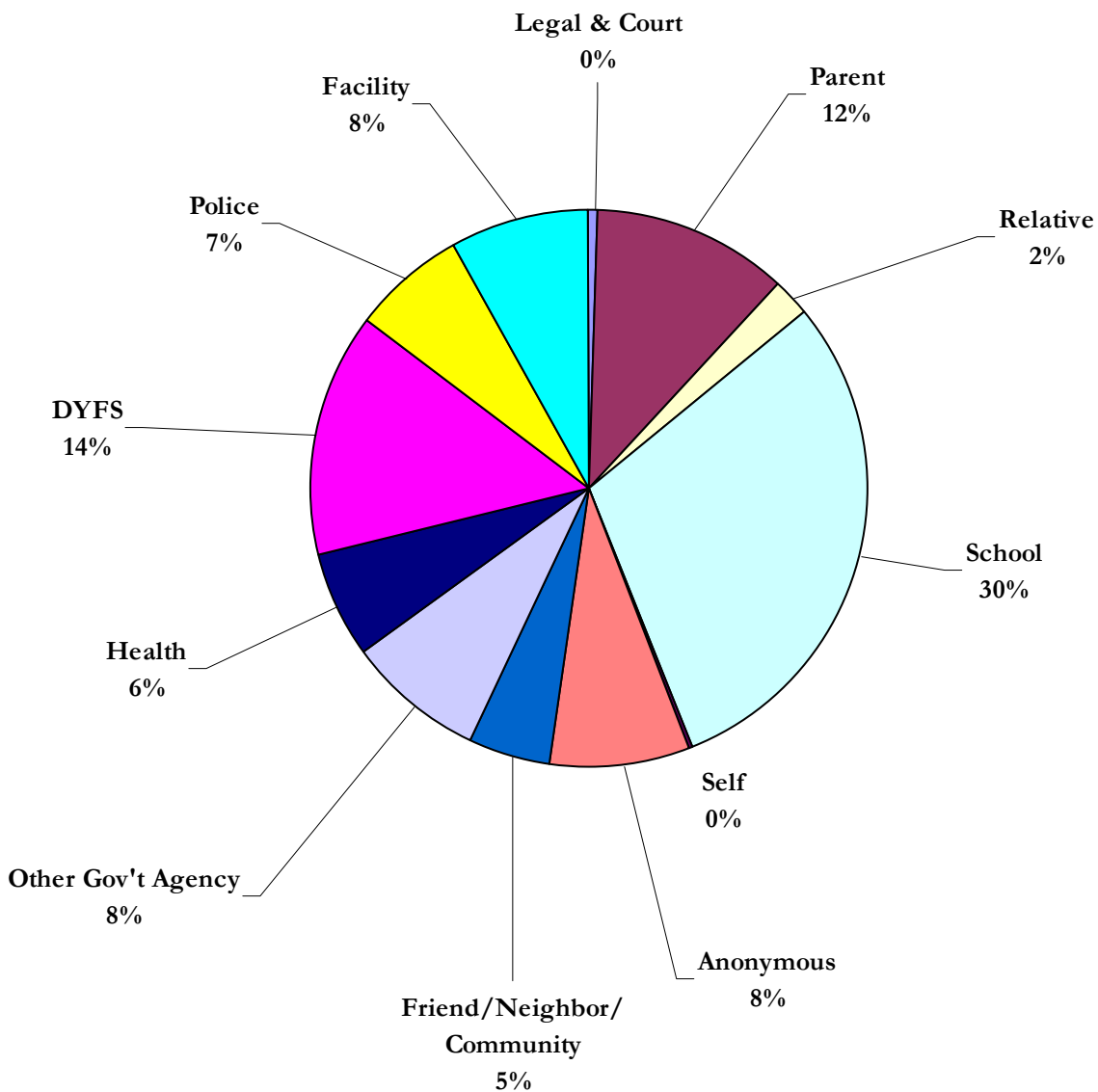
All Referrals to the Institutional Abuse Investigation Unit (IAIU)

New Jersey Department of Children and Families
All Referrals to IAIU



Referrals to the Institutional Abuse Investigation Unit (IAIU) (by source)

NJ DCF IAIU
Source of Referrals
First Quarter: Jan - Mar 2007
Total = 906



ABUSE/NEGLECT SUBSTANTIATIONS DATA

Abuse/Neglect Substantiations Data

Substantiations

When a call comes into the hotline and the caller reports a child may have been abused or neglected, one of our screening staff takes down all of that information and then reaches out to our staff in the field to conduct an investigation. As a result of that investigation, we make a finding about whether or not child abuse or neglect occurred.

In April 2005, New Jersey officially changed the findings that could be made with result of an abuse or neglect investigation. Previously, there were three possible outcomes:

- Substantiated: abuse or neglect occurred and there was sufficient evidence to make a finding that it occurred
- Unsubstantiated: abuse or neglect may have occurred but there was not sufficient evidence to make a finding that it occurred
- Unfounded: no evidence that abuse or neglect occurred

In April 2005, those three findings were reduced to two and the definitions **changed**:

- Substantiated: abuse or neglect occurred and there was sufficient evidence to make a finding that it occurred
- Unfounded: there was not sufficient evidence to establish that abuse or neglect occurred

This change in definition changed our practice – and it changed our reporting. Because this change occurred in the middle of a reporting year, the data on substantiations for 2005 is **unique**. It cannot be compared with the reporting from the previous years – and it will not be comparable with 2006. Calendar year 2006 will provide DCF with its first baseline year on substantiations with this change in the law.

Abuse/Neglect Substantiations Data

CY 2005

NJ DCF Substantiation Data

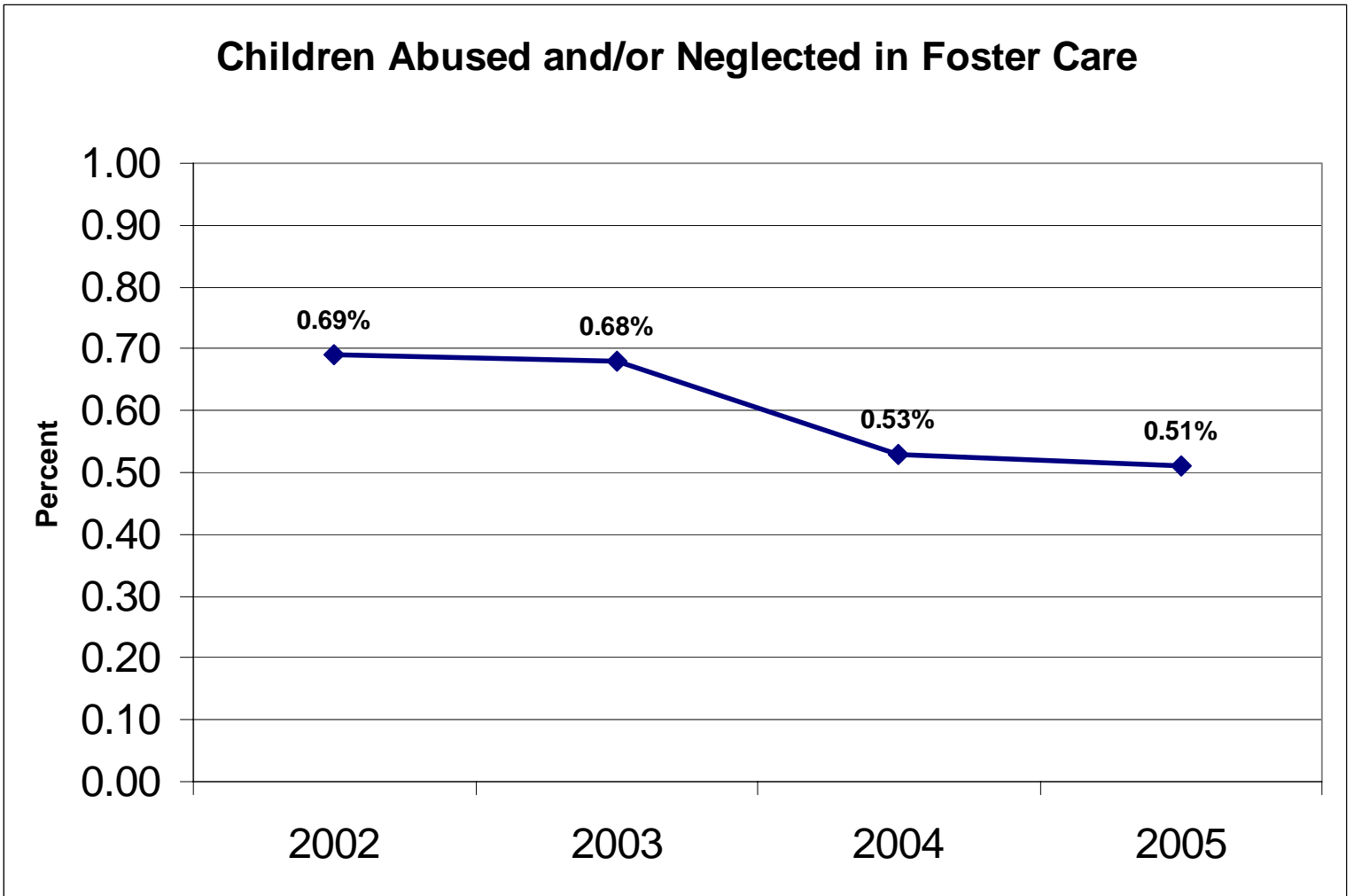
County of Incident ⁽¹⁾	2005		
	Number of Children (2)	Number Substantiated	Percent Substantiated
	Atlantic	2,704	443
Bergen	3,452	711	20.60%
Burlington	3,272	338	10.33%
Camden	6,174	977	15.82%
Cape May	1,130	239	21.15%
Cumberland	2,691	453	16.83%
Essex	7,756	1,575	20.31%
Gloucester	2,221	299	13.46%
Hudson	4,626	780	16.86%
Hunterdon	554	143	25.81%
Mercer	3,438	604	17.57%
Middlesex	4,244	897	21.14%
Monmouth	4,283	622	14.52%
Morris	2,231	281	12.60%
Ocean	4,326	827	19.12%
Passaic	5,035	629	12.49%
Salem	958	165	17.22%
Somerset	1,371	251	18.31%
Sussex	1,272	125	9.83%
Union	3,300	487	14.76%
Warren	1,267	143	11.29%
Out of State	193	34	17.62%
Grand Total	66,498	11,023	16.58%

⁽¹⁾ County of Incident is based on the municipality of incident. There are cases in each county in which abuse/neglect figures were not reported at the municipality level. In these instances, if one of the parents' municipalities was populated, it was substituted for the incident municipality. The mother's (Parent 2) municipality was substituted first. Where this was missing, the father's (Parent 1) municipality was referenced.

⁽²⁾ A referral for an investigation can involve several children or a child with several allegations or both. This chart counts by children by separate incident, not allegations or investigations. If a child is the subject of several referrals related to the same incident, that is counted once. But if that child is the subject of referrals on separate occasions - e.g. once in March and once in September - both of those incidents are included.

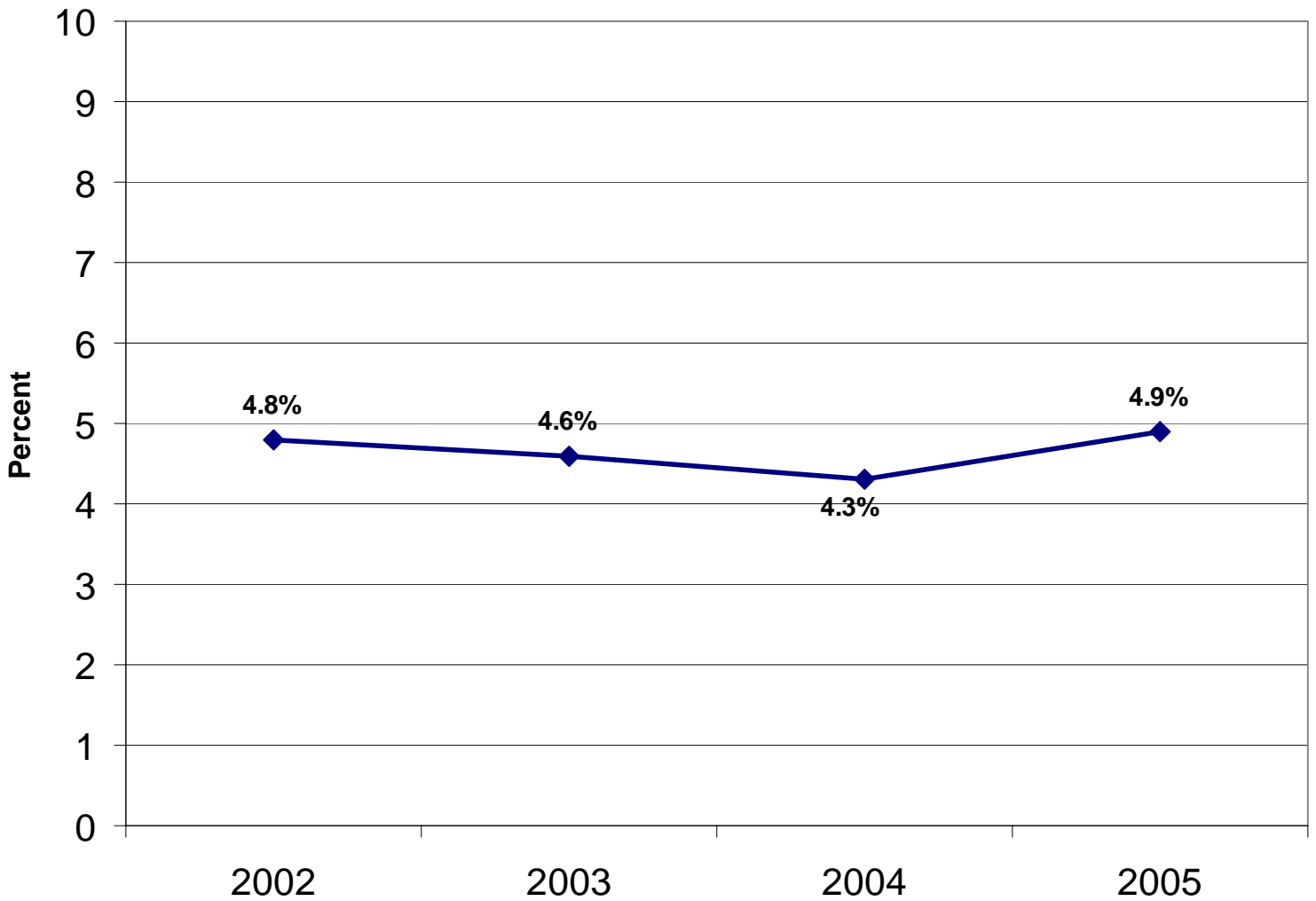
**(FOR MUNICIPAL BREAKDOWN, VISIT:
<http://nj.gov/dcf/home/childdata/referrals/>)**

Abuse/Neglect Substantiations Data

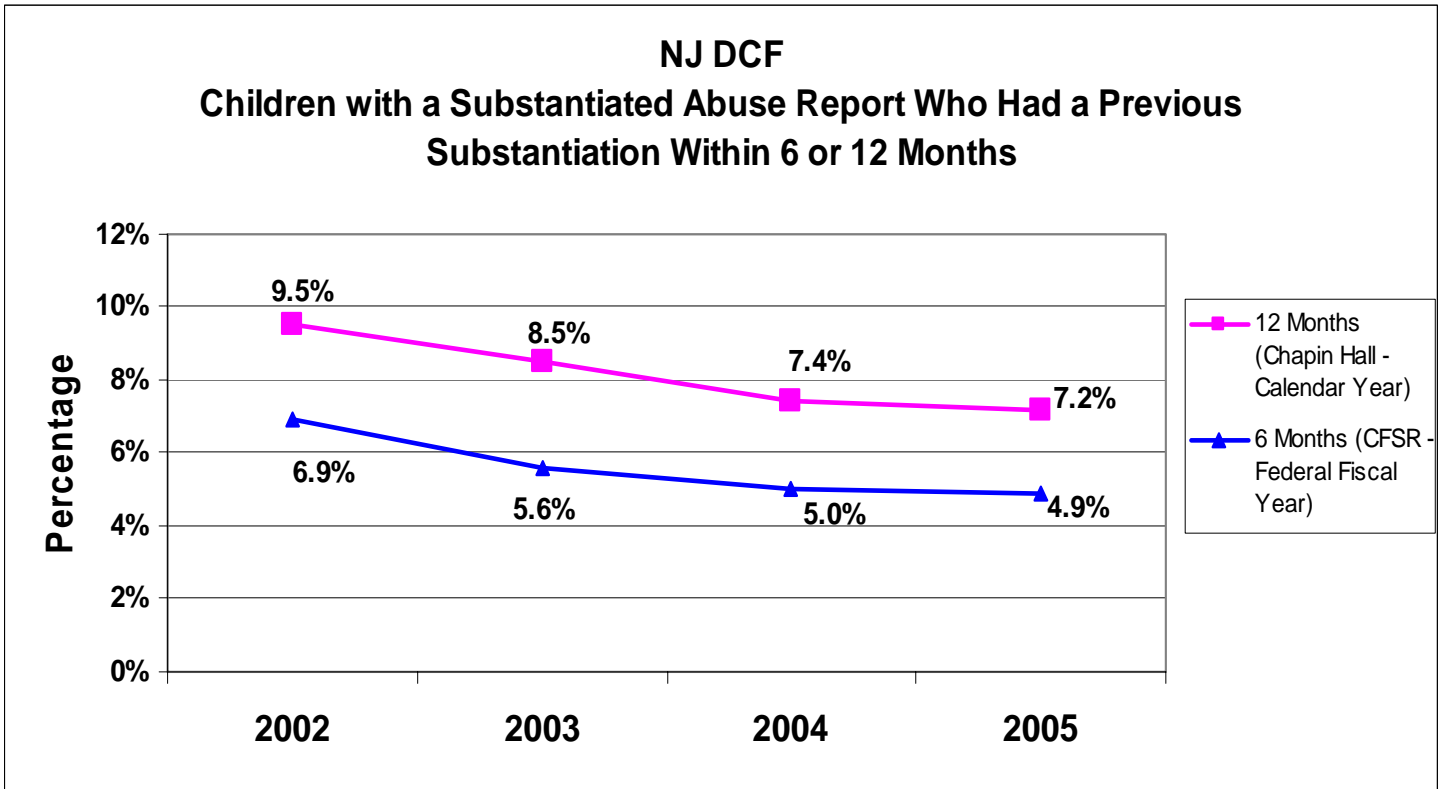


Abuse/Neglect Substantiations Data

NJ DCF Children where Abuse/Neglect has been substantiated after a previous report was unsubstantiated

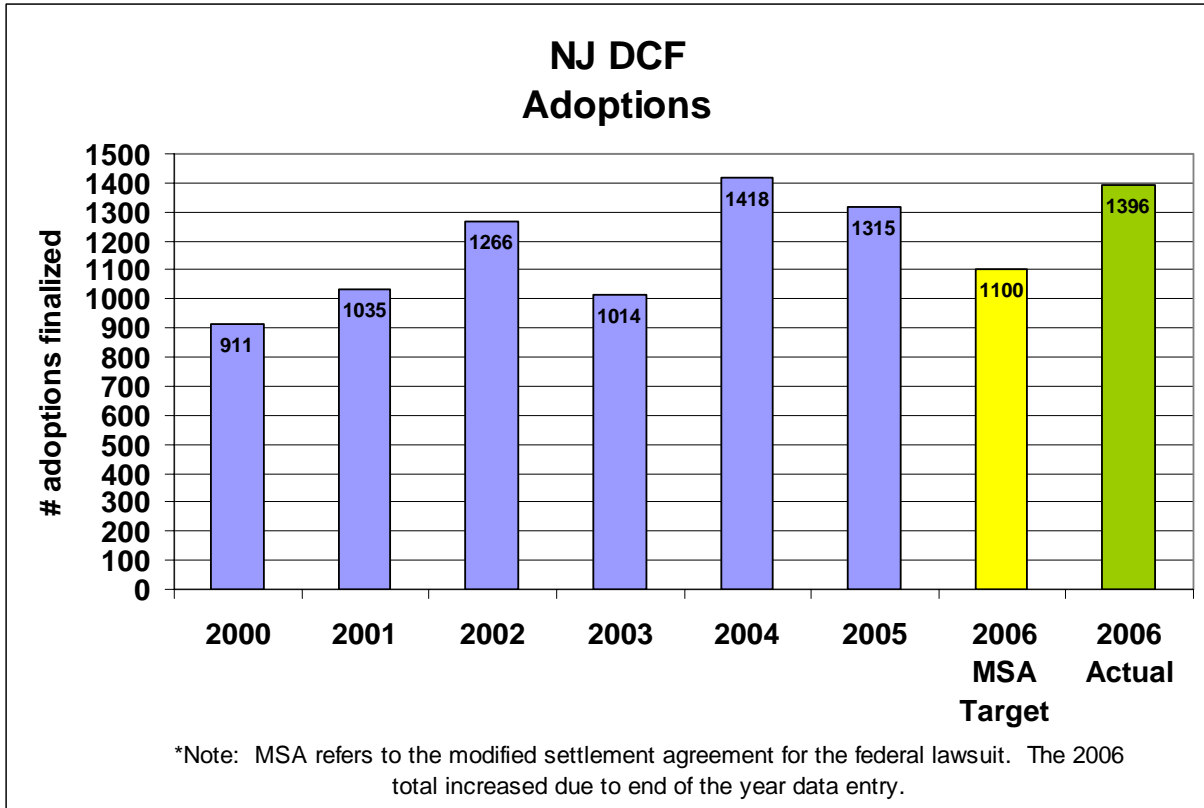


Abuse/Neglect Substantiations Data

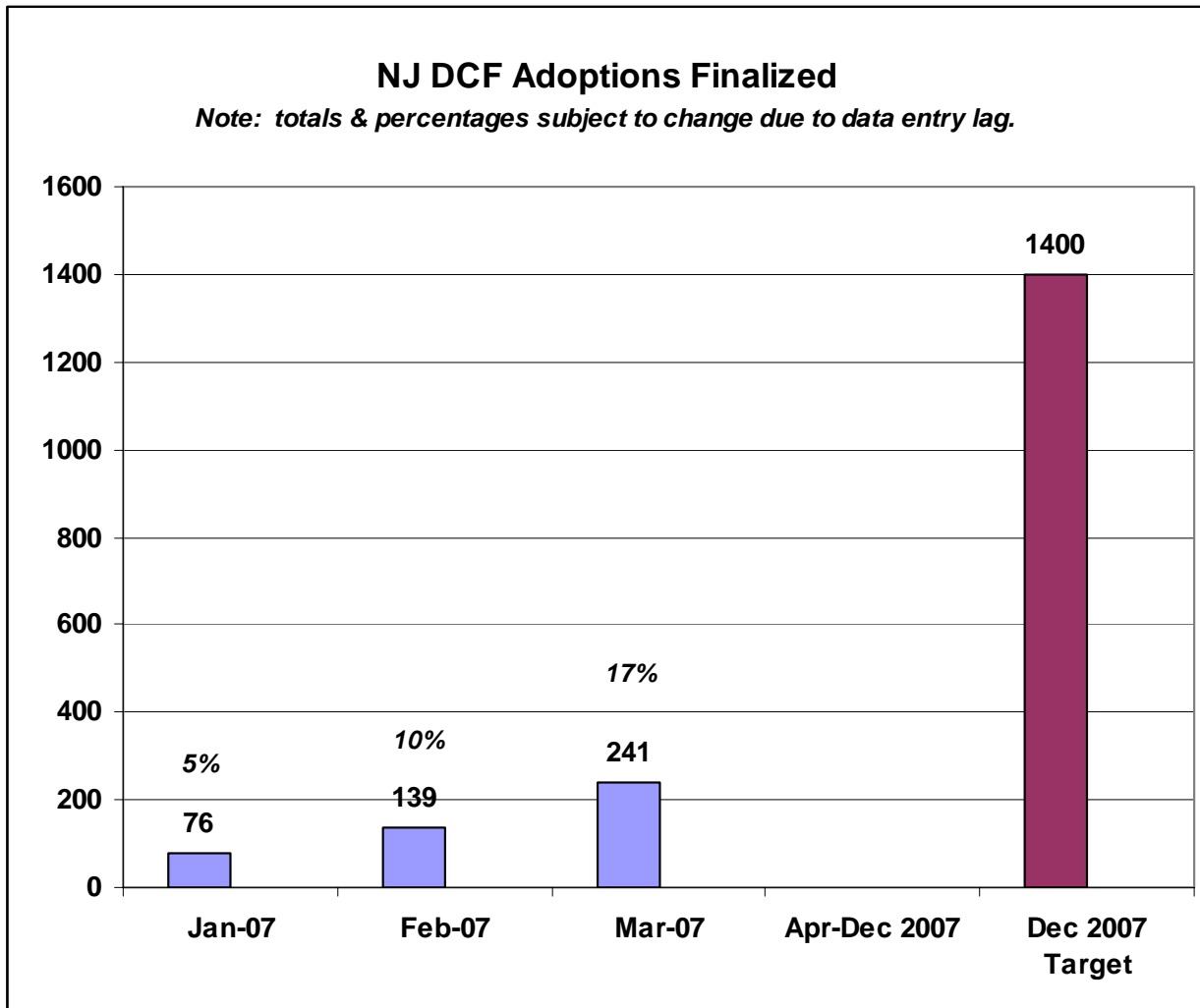


ADOPTIONS and KINSHIP LEGAL GUARDIANSHIP

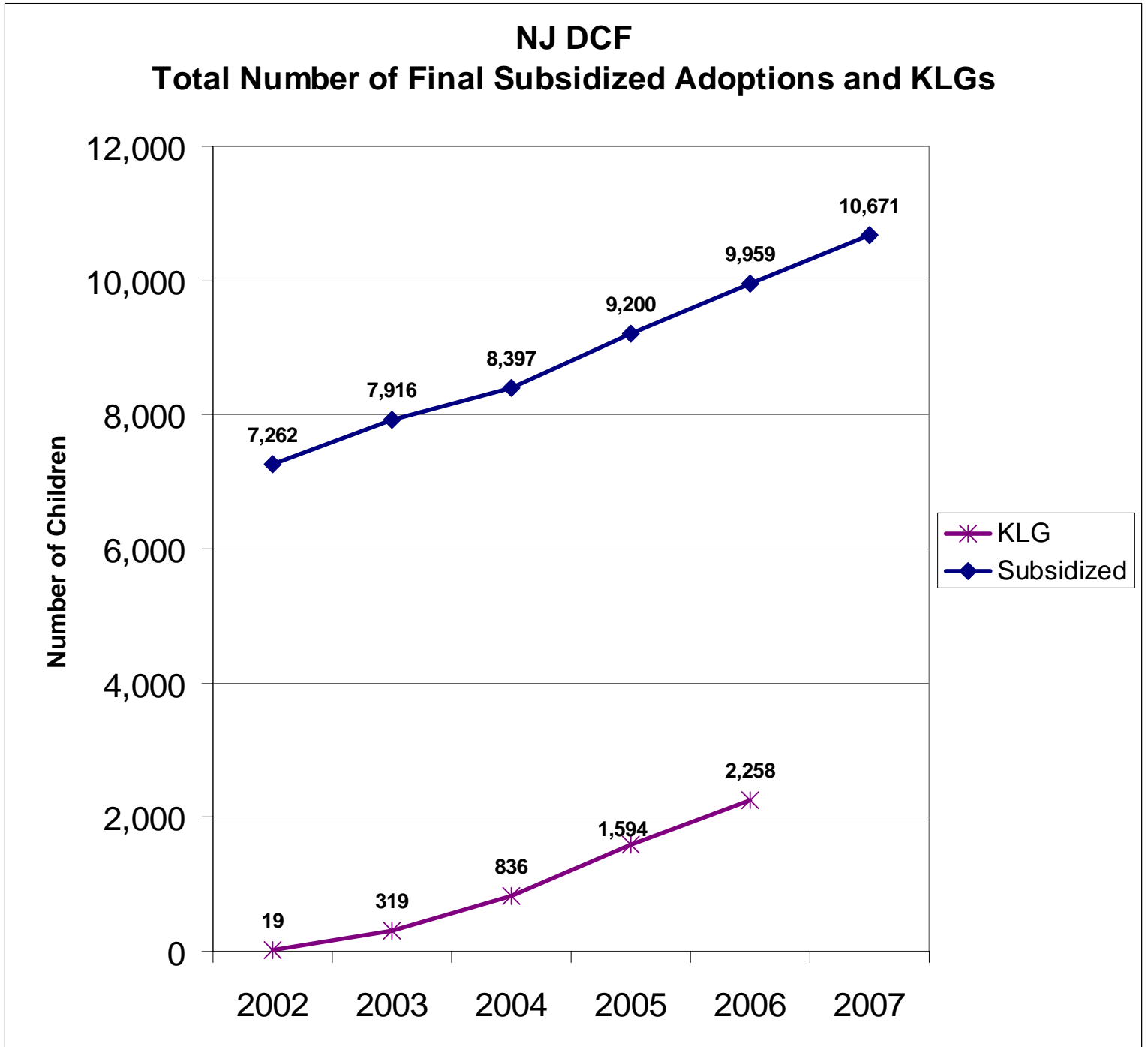
Adoptions Finalized 2000-2006



Adoptions Finalized January 2007 – March 2007

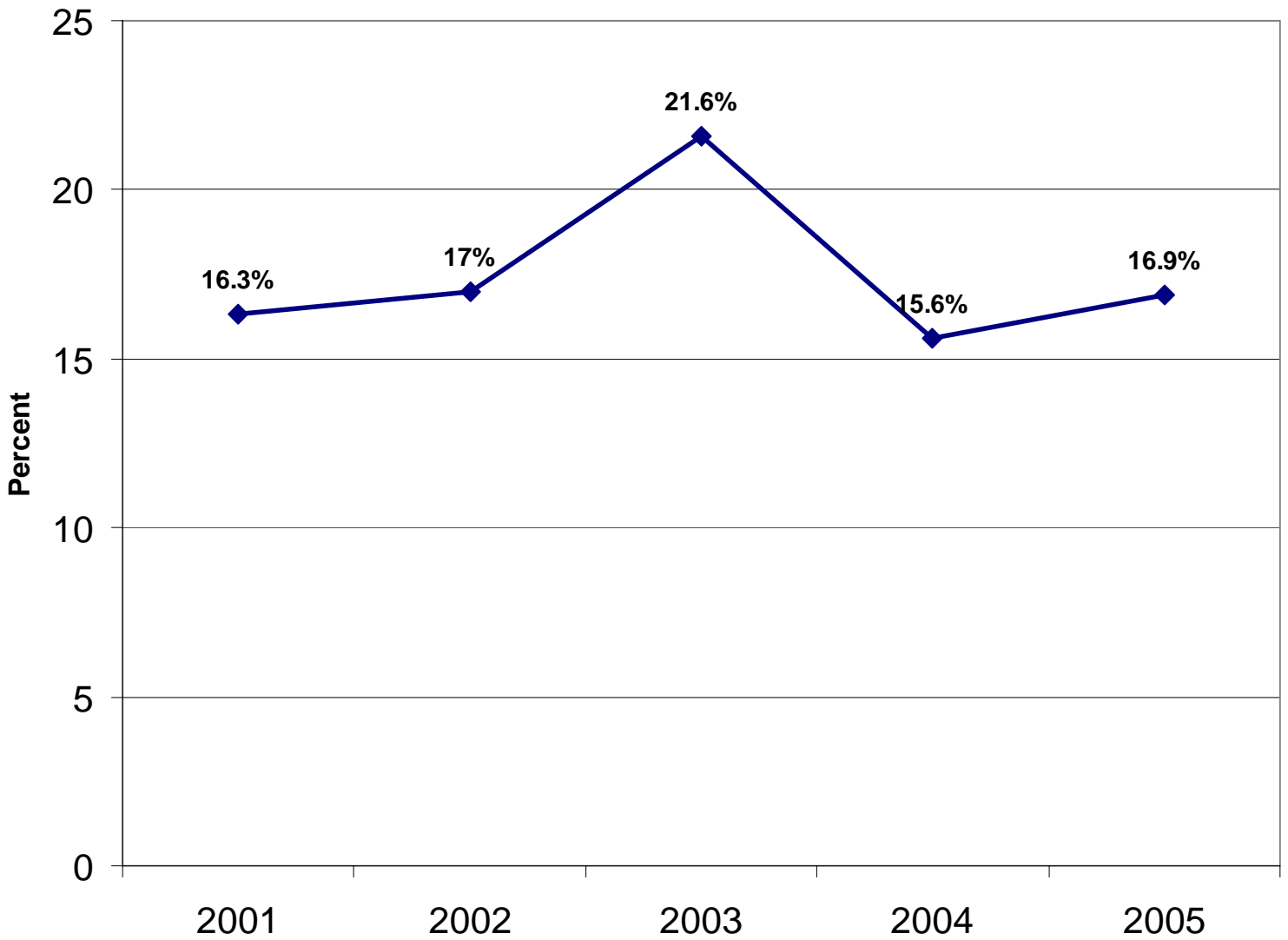


Adoptions and Kinship Legal Guardianship



Adoptions

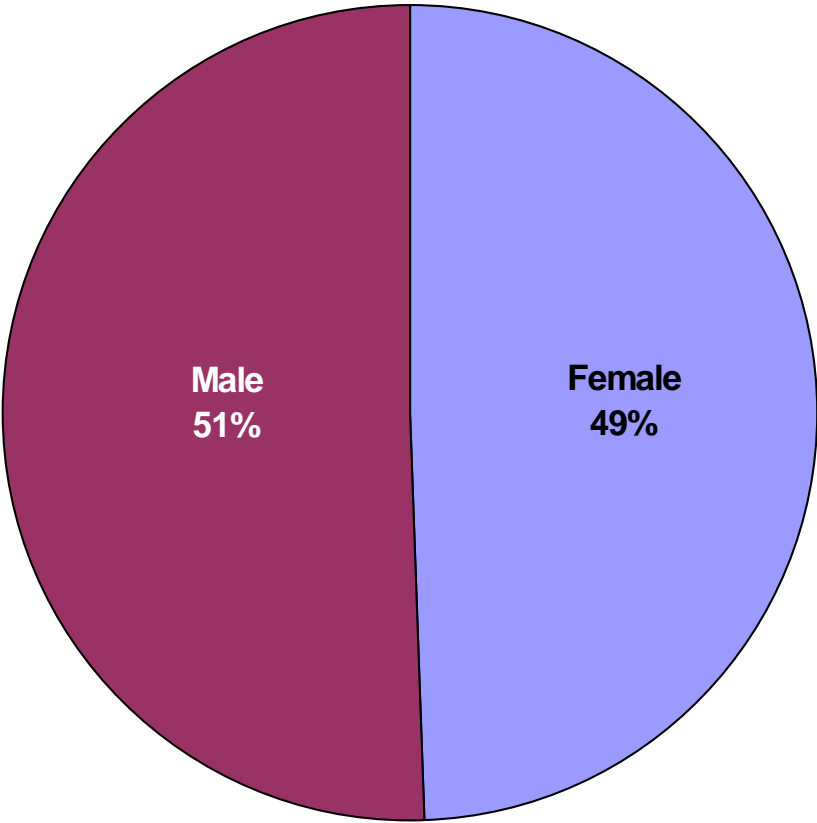
NJ DCF
Percent of Children Adopted within
24 Months of Placement



DYFS DEMOGRAPHICS

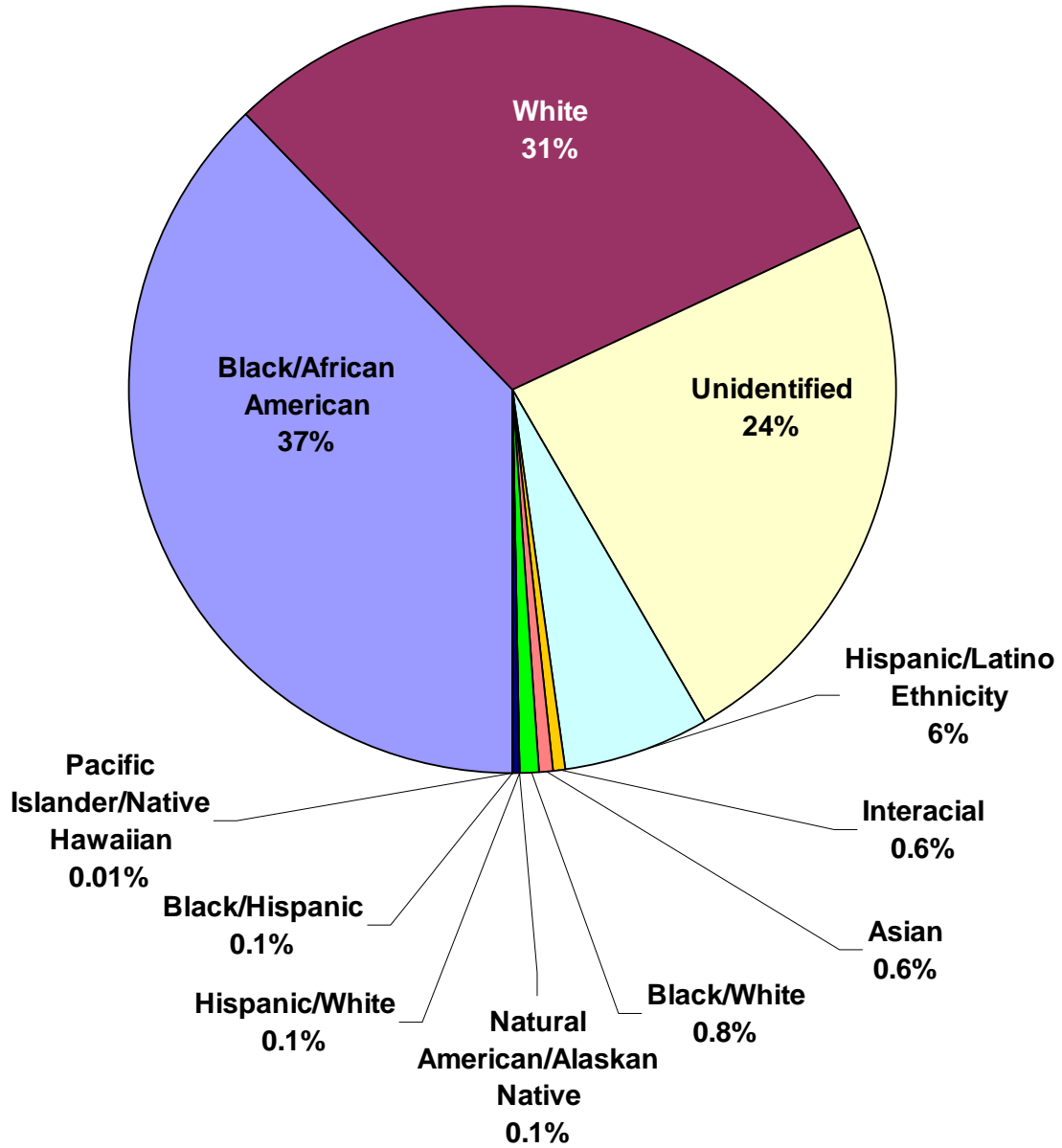
All Children Receiving DYFS Services

New Jersey Department of Children and Families
All Children Receiving Services
Gender as of March 31, 2007



All Children Receiving DYFS Services

New Jersey Department of Children and Families All Children Receiving Services Race/Ethnicity as of March 31, 2007

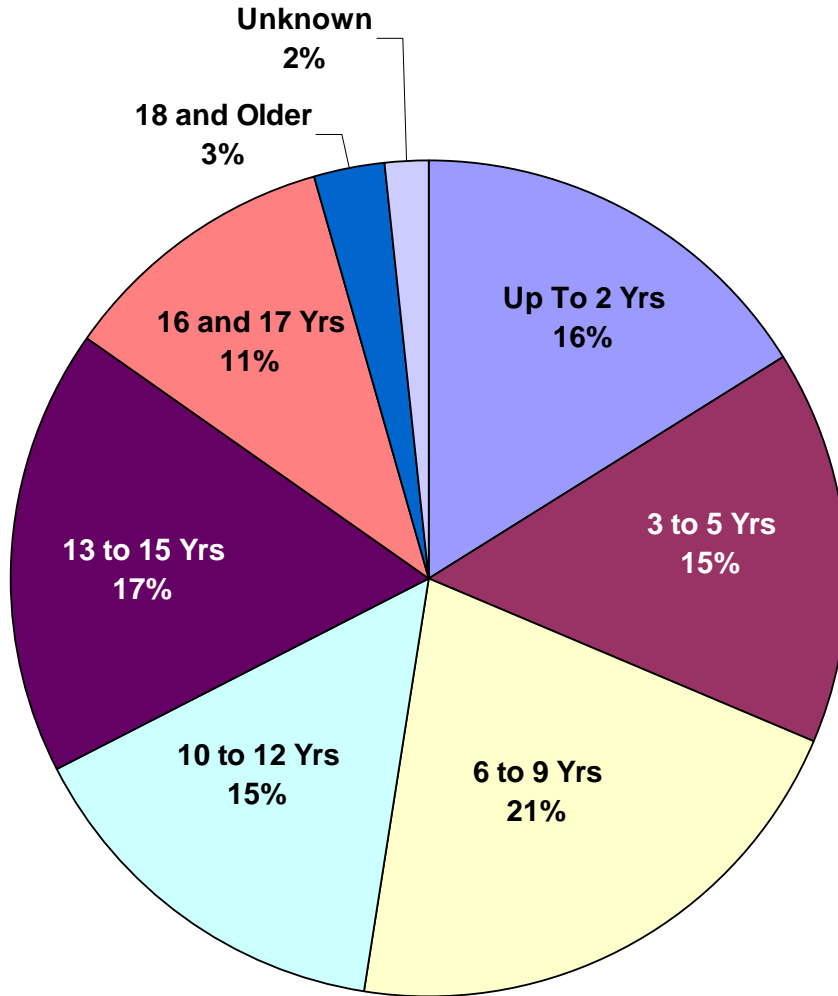


IMPORTANT NOTE: Reporting on race and ethnicity is limited. DCF currently relies on SIS, a legacy system, which pre-dates US Census methodology. NJ Spirit will utilize US Census methodology.

All Children Receiving DYFS Services

New Jersey Department of Children and Families All Children Receiving Services

Age as of March 31, 2007



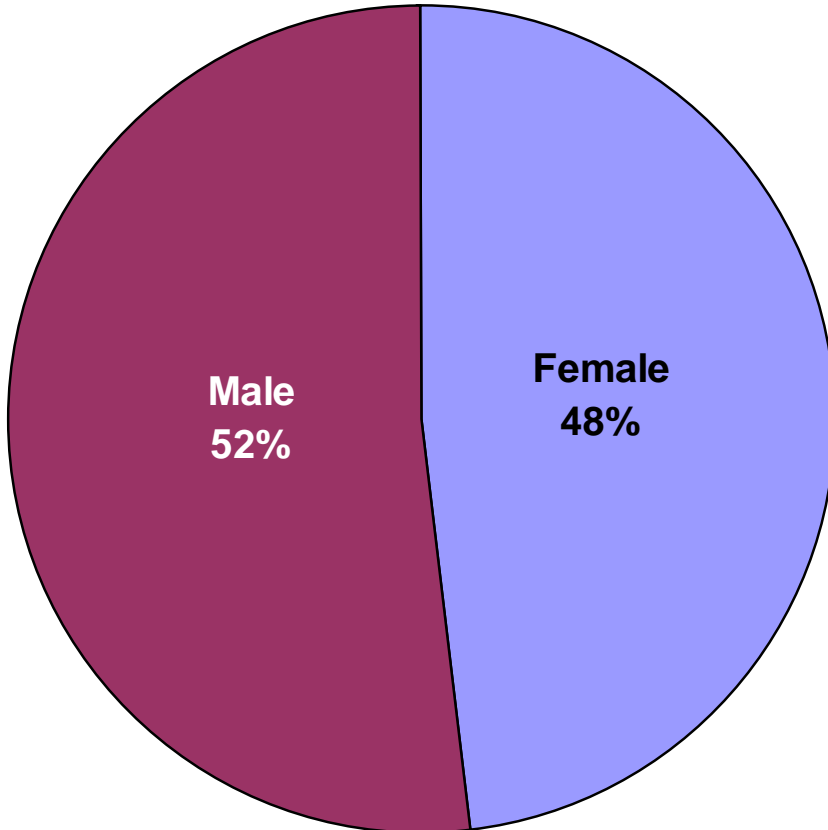
Children in DYFS Out-of-Home Placement

Children in Placement by County

COUNTY	# of Children in Placement (Mar 2007)	% statewide
Atlantic	292	3%
Bergen	468	5%
Burlington	418	4%
Camden	835	8%
Cape May	162	2%
Cumberland	349	3%
Essex	2512	24%
Gloucester	266	3%
Hudson	669	6%
Hunterdon	66	1%
Mercer	453	4%
Middlesex	640	6%
Monmouth	594	6%
Morris	199	2%
Ocean	590	6%
Passaic	465	4%
Salem	204	2%
Somerset	145	1%
Sussex	97	1%
Union	831	8%
Warren	114	1%
STATE WIDE TOTALS	10369	

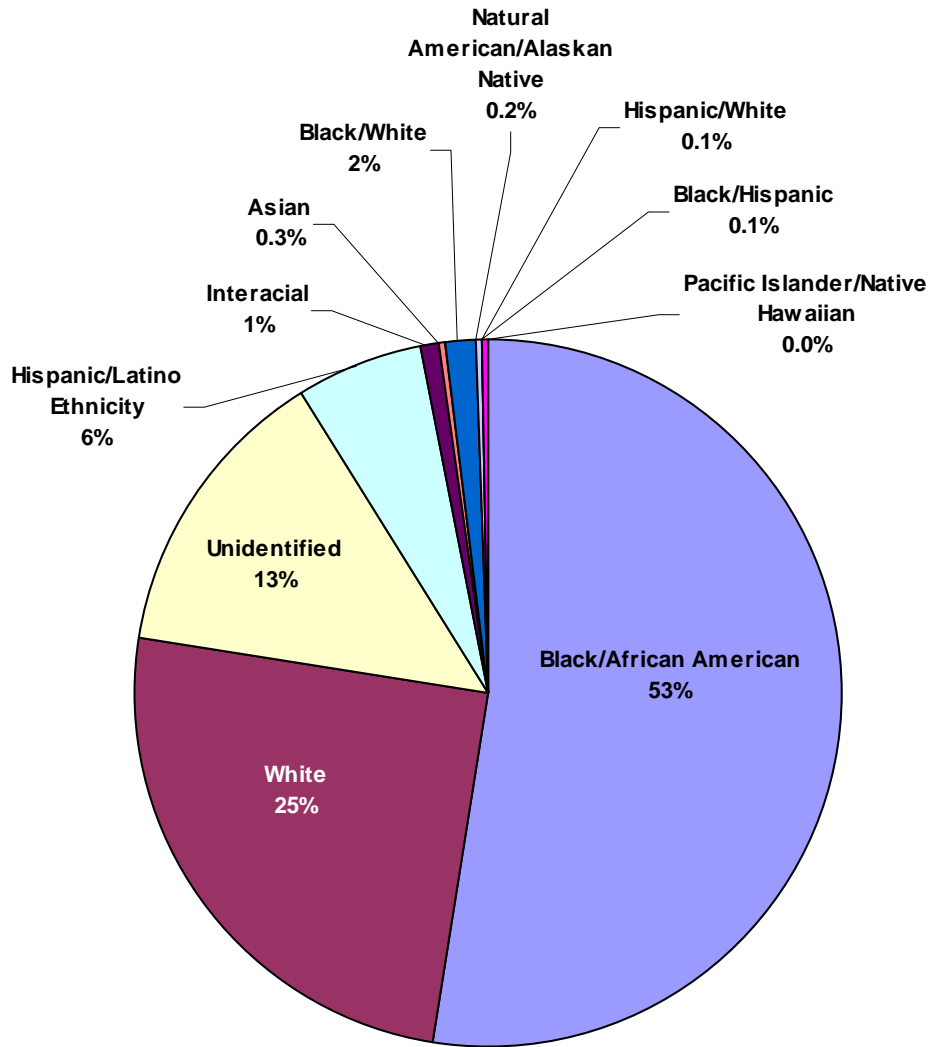
Children in DYFS Out-of-Home Placement

NJ Department of Children and Families Children in Placement by Gender (Mar 07)



Children in DYFS Out-of-Home Placement

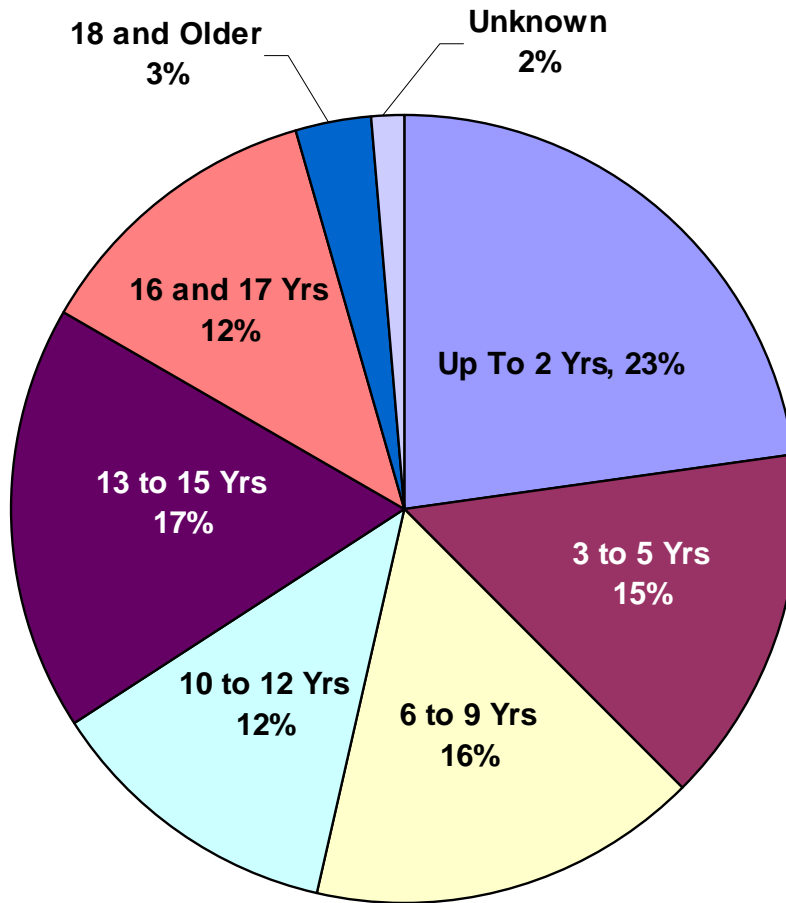
NJ DCF Children in Placement Race & Ethnicity



IMPORTANT NOTE: Reporting on race and ethnicity is limited. DCF currently relies on SIS, a legacy system, which pre-dates US Census methodology. NJ Spirit will utilize US Census methodology.

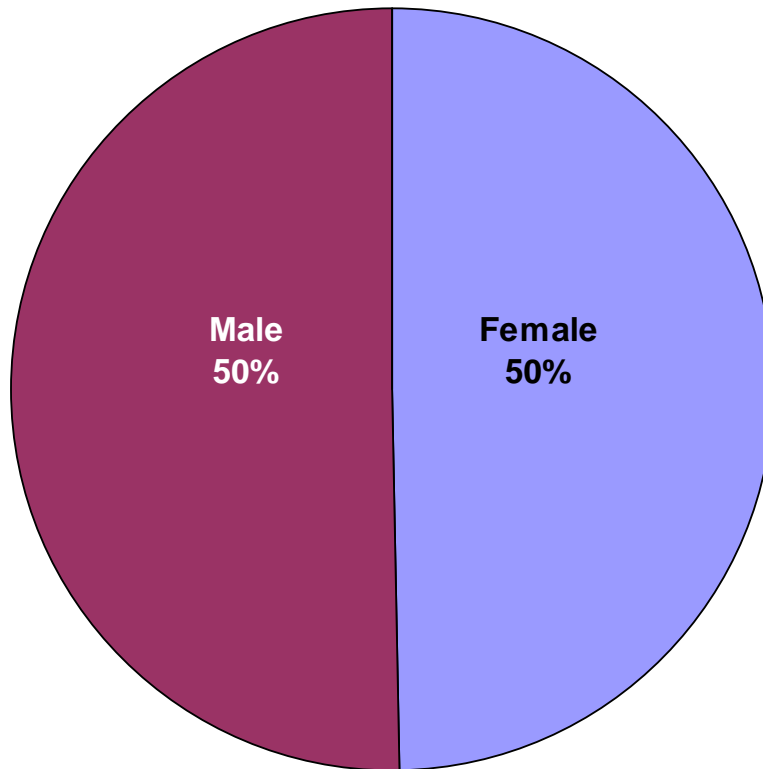
Children in DYFS Out-of-Home Placement

NJ Department of Children and Families Children in Placement by Age (Mar 07)



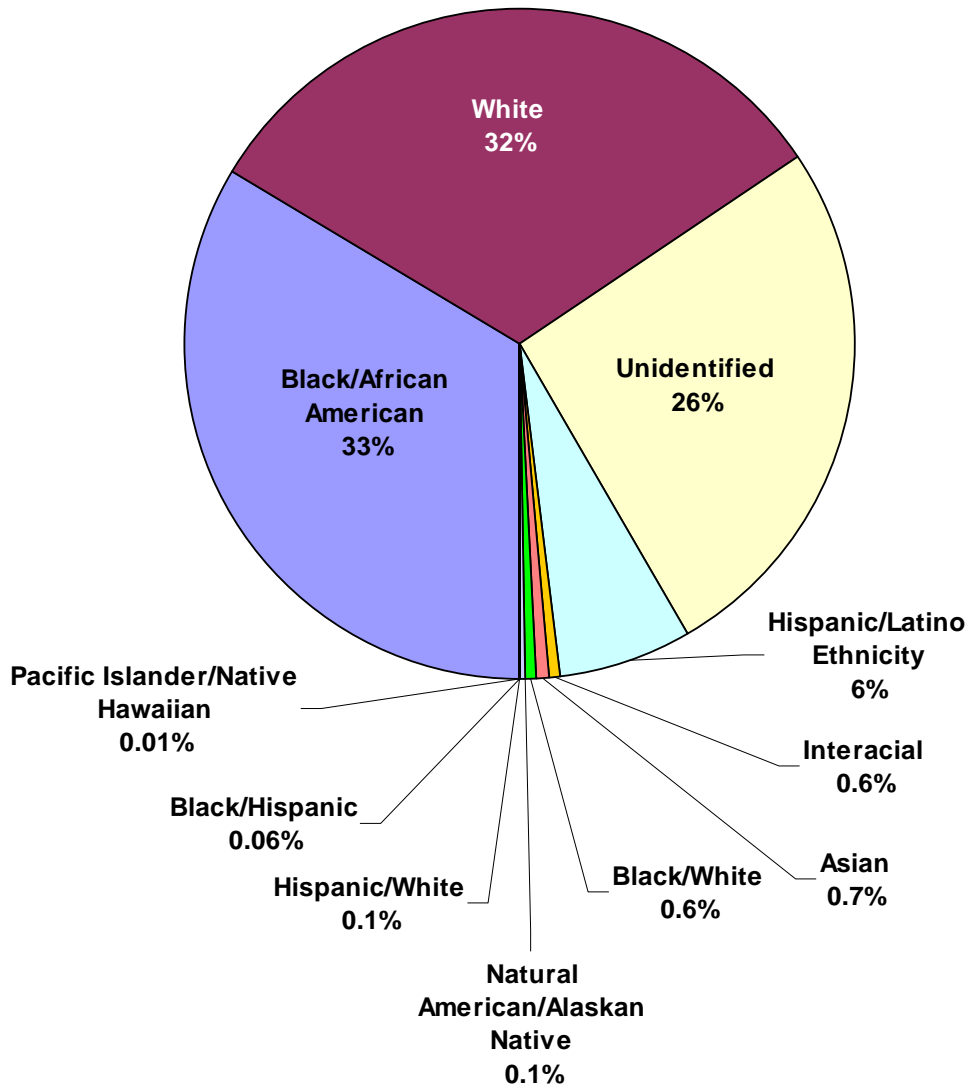
Children Receiving DYFS Services at Home

**New Jersey Department of Children and Families
Active Children In Own Home Receiving Services
Gender as of March 31, 2007**



Children Receiving DYFS Services at Home

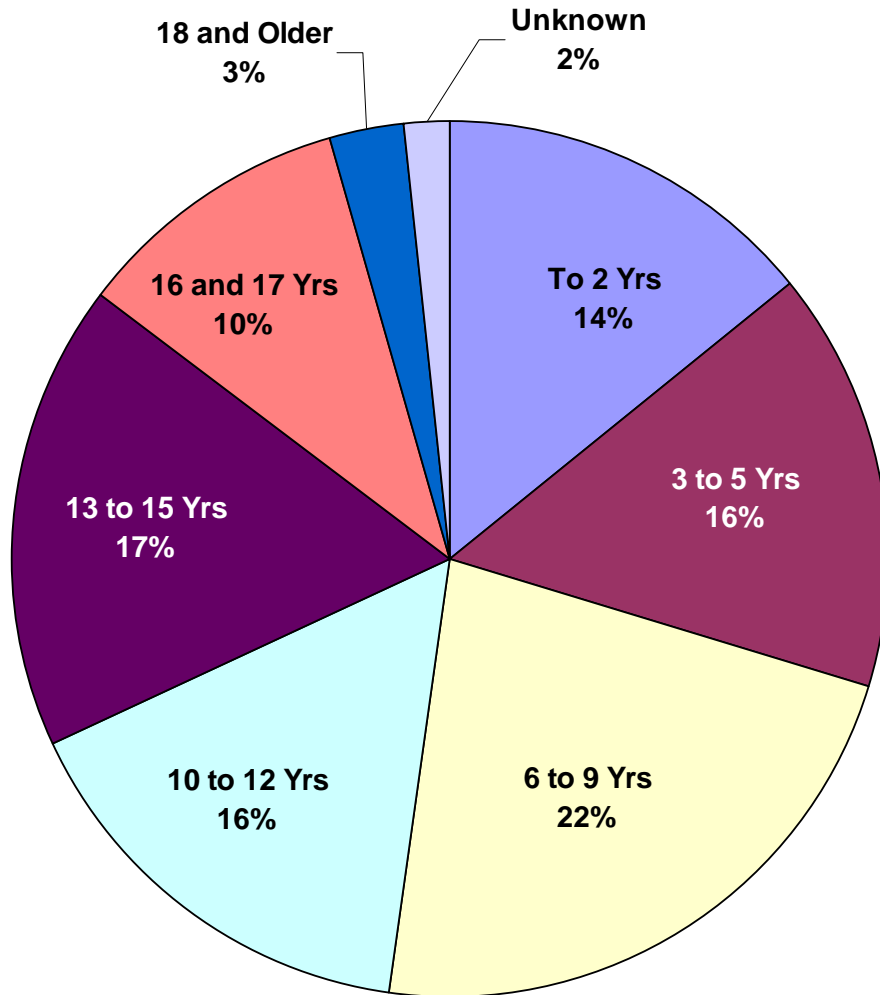
New Jersey Department of Children and Families Active Children In Own Home Receiving Services Race/Ethnicity as of March 31, 2007



IMPORTANT NOTE: Reporting on race and ethnicity is limited. DCF currently relies on SIS, a legacy system, which pre-dates US Census methodology. NJ Spirit will utilize US Census methodology.

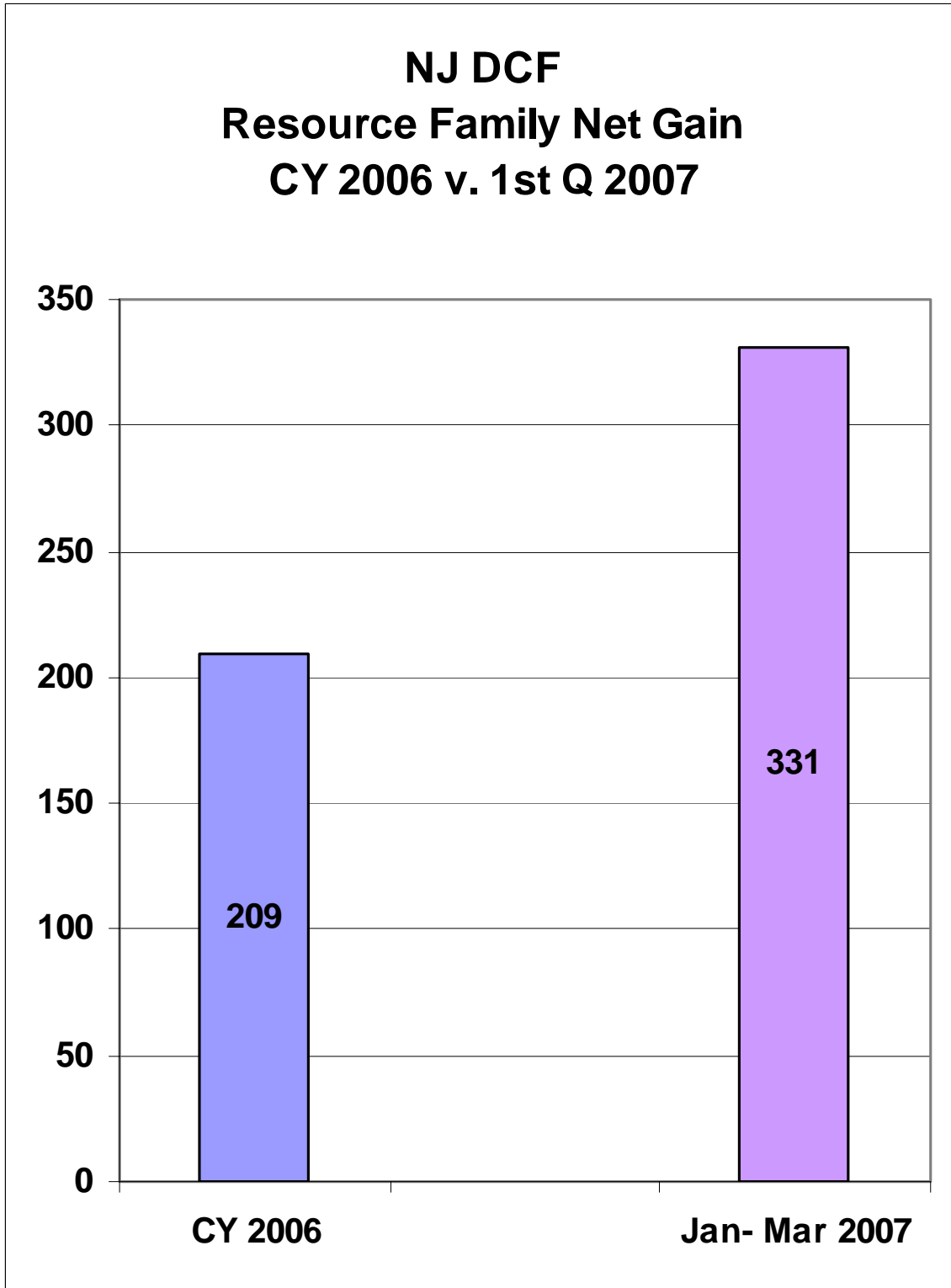
Children Receiving DYFS Services at Home

New Jersey Department of Children and Families Active Children In Own Home Receiving Services Age as of March 31, 2007

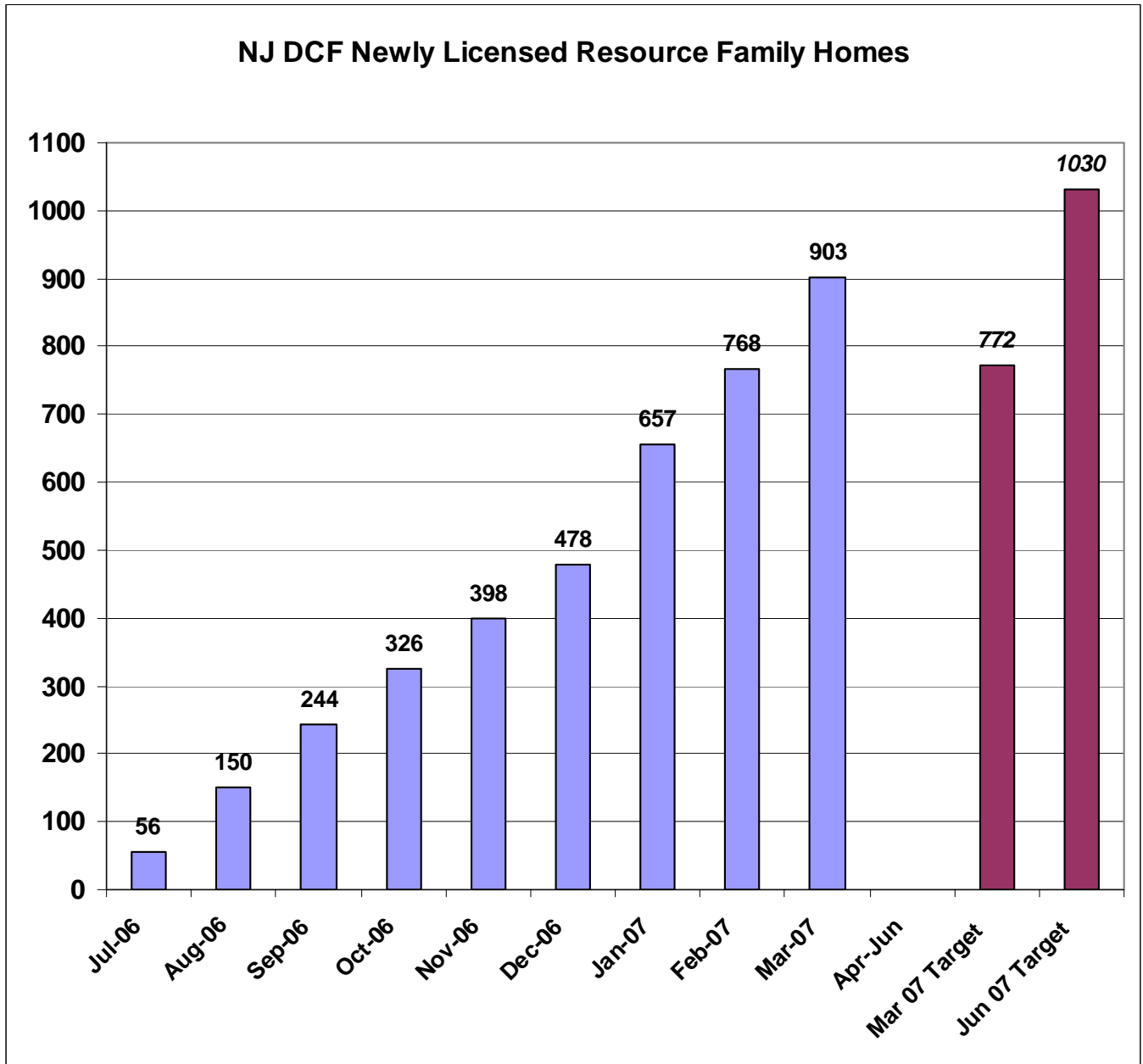


RESOURCE FAMILIES

Resource Families

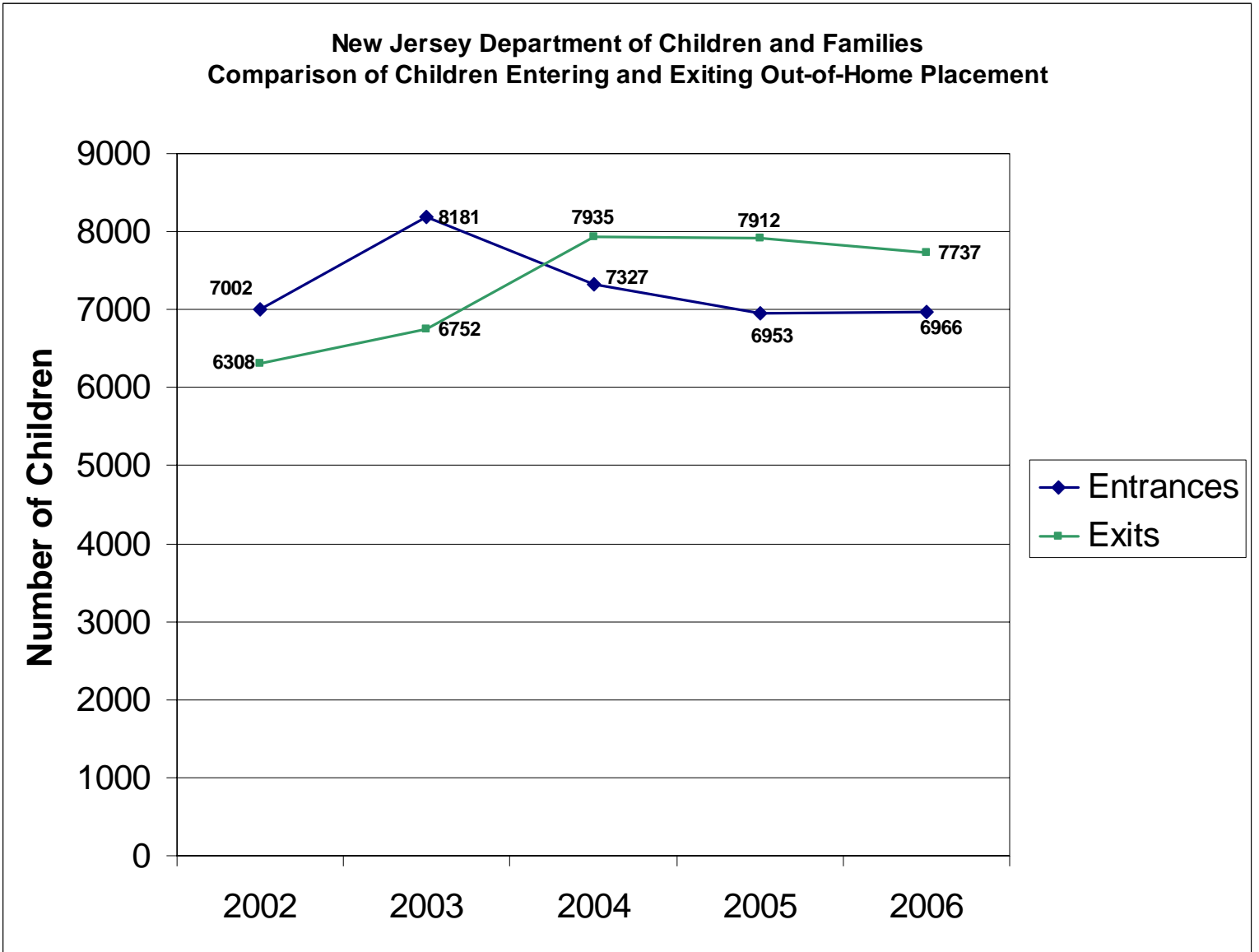


Resource Families



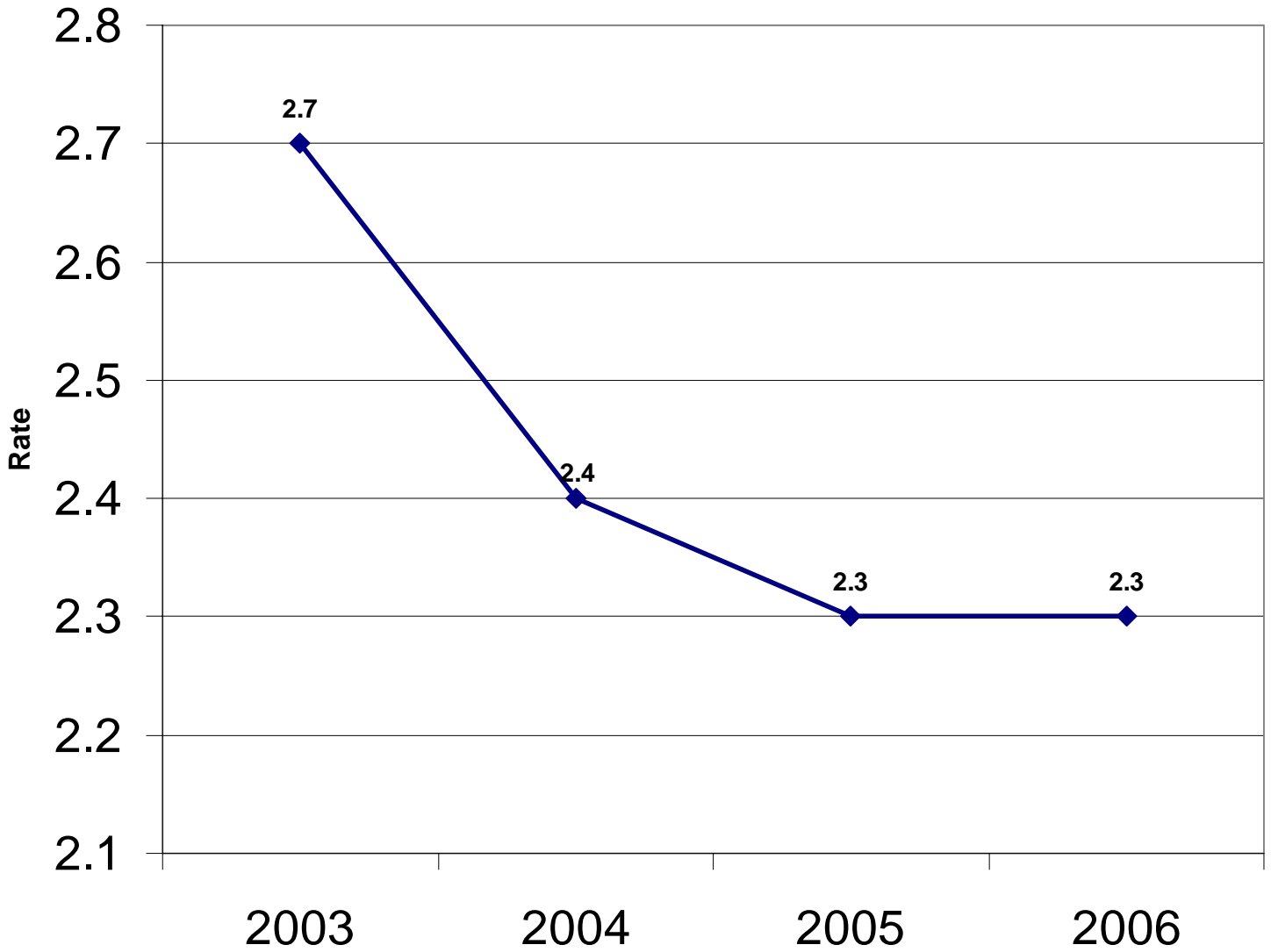
OUTCOME DATA

Outcome Data



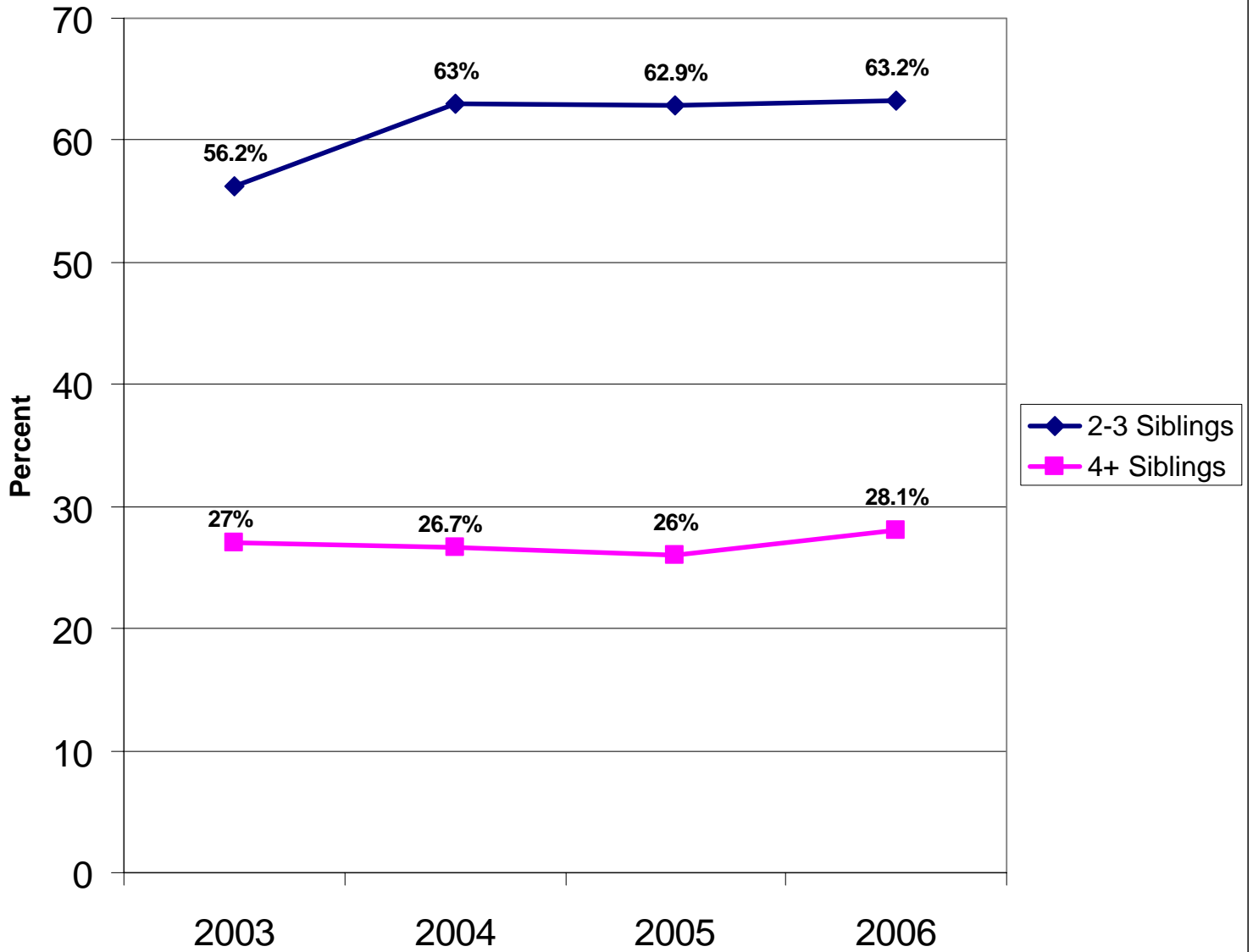
Outcome Data

NJ DCF
Rate of Children Entering Placement
per 1,000 in General Population



Outcome Data

NJ DCF Sibling Groups Placed Together



Outcome Data

