



Bradley Car Care

Located in Bradley Beach, NJ
in a residential neighborhood.





Solvent Parts Washer

Evidence of spills
No secondary containment



Waste oil pump out

Evidence of spills
No secondary containment



Battery Storage

Wire shelves

No secondary containment





Storage Room and Compressor
Compressor Type: Piston. Turned off nightly.



The facility mainly has T12 lighting, but has begun switching to T5 lights.



Waste Storage Area

Waste Oil (white tank)
has secondary containment

No recycling containers

Evidence of spills

No secondary containment
for waste anti-freeze or waste
oil-filters.



Stormwater exposure



Recyclable paper, metal and plastic are being disposed with other solid waste.





Bulk oil delivery system shows evidence of leaks or spills.





Bulk oil & Anti-freeze

Evidence of spills

No secondary containment





Service bay shows evidence of spills.
Speedy-dry is being used as primary spill control.
Spill pans are not present.

Bradley Car Care

Photos from revisit after implementation of
NJGARP recommendations





New shed to store drums containing waste and batteries away from stormwater exposure.



Drums stored in secondary containment, spill pan.



Batteries are stored on plastic coated wire rack shelf.



Wastes and recyclables are separated.

White tank: waste oil

Blue bin: mixed recyclables (glass, metal, paper, plastic)

Gray bin: yard waste



Replaced solvent parts washer with aqueous microbial parts washer



Spill Containment for Drums



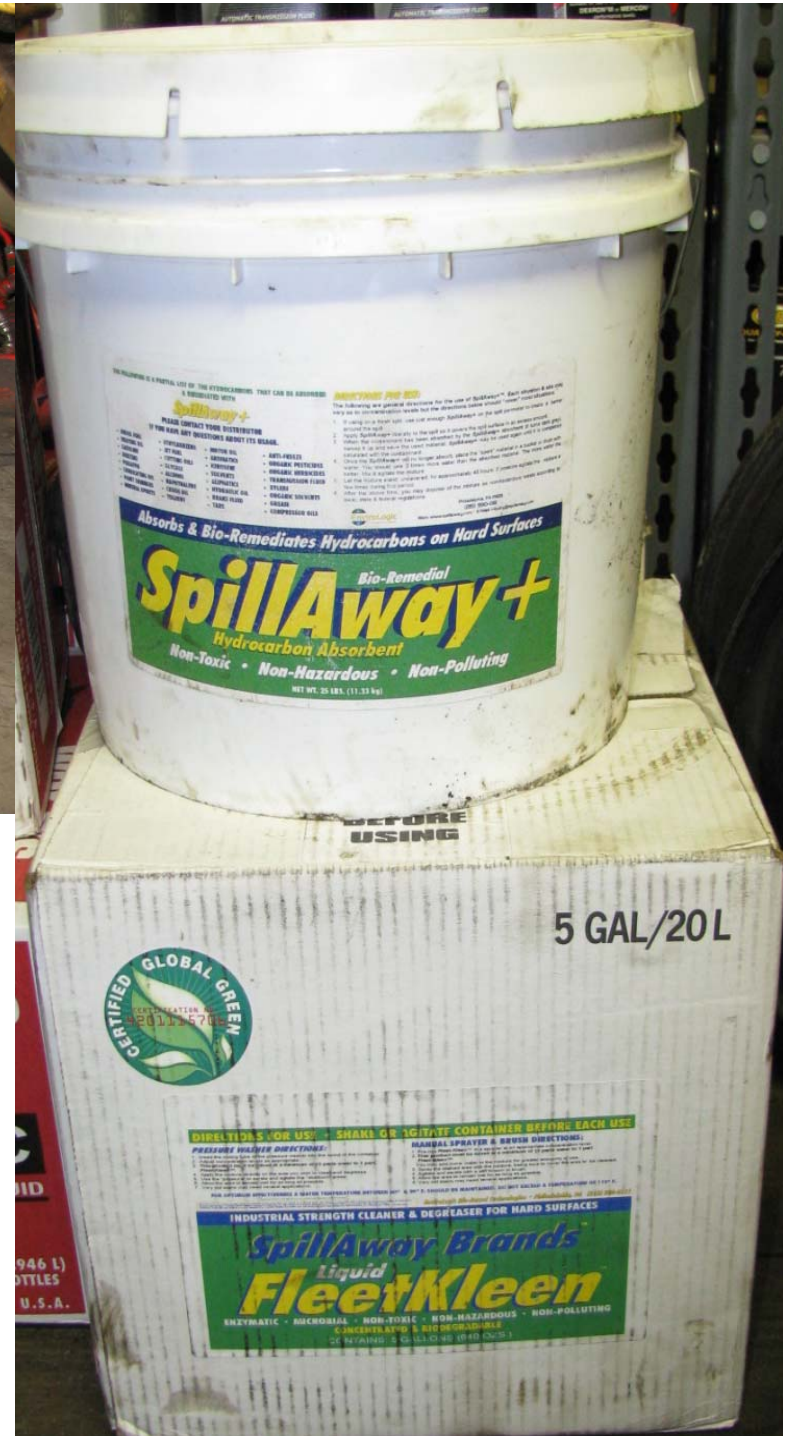
Spill Containment for
Liquid Transfer Areas



Oil stained floors have been effectively cleaned with bio remedial absorbents and cleaners

SpillAway+ Hydrocarbon Absorbent
(bio remedial)

SpillAway Brands, Liquid FleetKleen
(hard surface cleaner using enzymatic & microbial compounds)





Adsorbent Drum Top Pads

Catch leaks and drips when transferring liquids.



Repaired leak in oil transfer area.



Placed drums in secondary containment



Spill pans used to catch drips and leaks.

Oil is directed to collection container.

Oil is prevented from soiling the floor.



Funnel stacking with drip collector





Self closing container (red) for oily and solvent rags.

Drum for catching drips and leak from oil transfer nozzle

Oil caddy for oil changes.