

# CREATE & SUBMIT eEEMPR

USING DEP ONLINE PORTAL





# THE OFFICIAL WEB SITE FOR THE STATE OF NEW JERSEY

Search

- Home
  - About NJ
  - Business
  - Community & Wellness
  - Education
  - Employment
  - Government
  - NJ Green
  - Public Safety & Security
  - Things to do in NJ
  - Transportation & Motor Vehicles
- Login** Register



### In This Month of NJ History

April 14 1894  
Thomas Edison's Kinetoscope, an early

News Online Services How Do I... NJ Lottery Visit NJ NJ Kids

### In The News

News Archives RSS

Governor Corzine Praises Lighting Science's Efforts to Stimulate Green Economy of the Garden State

New Jersey Sells Two Winning \$10,000 Tickets as Mega Millions Rolls to \$109 Million

### Spotlight

Today is Earth Day, April 22!

### GOVERNOR

**JON S. CORZINE**  
Visit His Web Site

Judiciary Legislature

2009 RECOVERY AND REINVESTMENT PLAN

Log On to My New Jersey

Log On ID:

Password:

Log On

- [Forgot your logon ID?](#)
- [Forgot your password?](#)
- [Sign Up to Become a Member](#)

[Help](#)

State of New Jersey - Windows Internet Explorer

https://portal01.state.nj.us/http://portal20.sa.state.nj.us:8080/portal/dt

File Edit View Favorites Tools Help

State of New Jersey

THE OFFICIAL WEB SITE FOR THE STATE OF NEW JERSEY

Services A to Z | Departments/Agencies | FAQs

myNJ Home myNJ Business **myNewJersey**

Welcome Kam Lo Si [logout](#) | [change profile](#) | [enter authorization code](#) | [choose start page](#) | [content](#) | [layout](#) | [help](#)

**Premier E-Business Services**

If you own a business or represent one in dealings with New Jersey state government,  
[Sign up for Premier E-Business Services](#)

**New Jersey Events**

**Travel Guide**

[Locate Events](#) | [Travel & Tourism Home](#) | [Add an Event](#)

**CSC Apps**

**HRDI Applications**

[HRDI eLearning](#)

**DEP Apps**

[DEP Groupwise](#)  
[DEP Intranet](#)  
[DEPOnline Services](#)

**Netlet**

No Netlet rules have been defined. Please contact your administrator.

**myNJ.earthWatch** [Edit](#)

[View NWS weather for: 08625](#)

**Air Quality:** Central Delaware Valley  
Current: **Good** Forecast: n/a

Start Microsoft PowerPoint - [...] F:\ State of New Jersey - ... NJDEP Online - Windows... NJDEP Online - Windows... Internet 100% 3:09 AM

## MY WORKSPACE

### Service Selection

**Note:** Access to this electronic service selection and submittal area is granted by selecting facilities using the [user profile](#). Some services are accessible without selecting facilities as shown below.

- Air Program**
- [General Permits](#)
- [Permit/Certificate Folder](#)
- [Permit/Certificate Renewals](#)
- [NOx RACT Combustion Adjustment](#)
- [Excess Emission Monitoring Performance Reports \(EEMPR\)](#)
- [Periodic Compliance Certification](#)
- [Diesel Retrofit Program](#)

**Configure Services**

### My Facilities/Program Interests

**Note:** You may add facilities by clicking the "Add Facilities" button below.

### Service Selection

**Note:** Access to this electronic service selection and submittal area is granted by selecting facilities using the [user profile](#). Some services are accessible without selecting facilities as shown below.

#### Air Program

- [General Permits](#)
- [Permit/Certificate Folder](#)
- [Permit/Certificate Renewals](#)
- [NOx RACT Combustion Adjustment](#)
- [Excess Emission Monitoring Performance Reports \(EEMPR\)](#)
- [Periodic Compliance Certification](#)
- [Diesel Retrofit Program](#)

**Configure Services**

### My Facilities/Program Interests

**Note:** You may add facilities by clicking the "Add Facilities" button below.

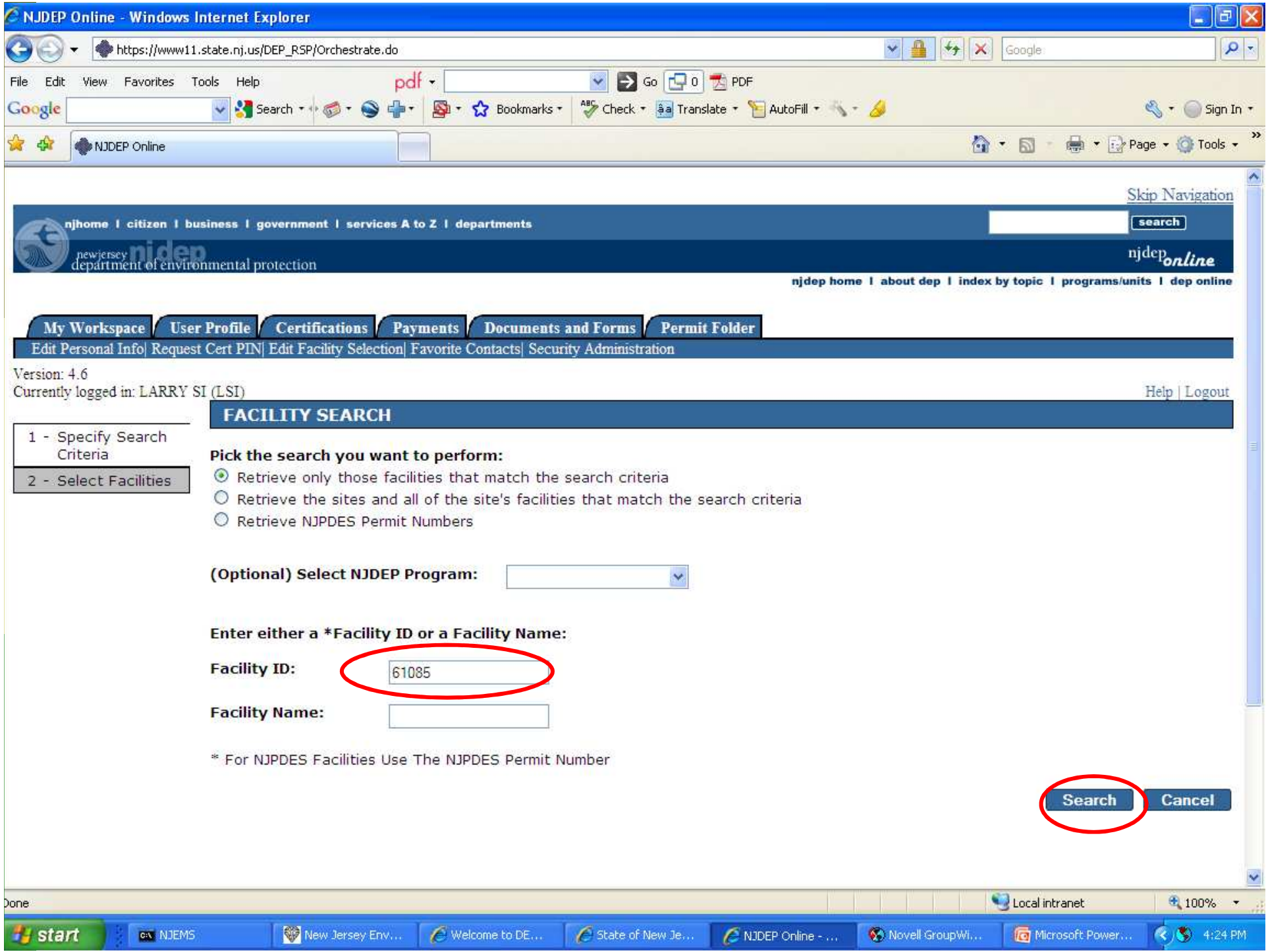
Facility Name	Facility ID	Program	Access Type	Change Access	Manage Security	View	Remove
Clicking a column title will sort the table by that column.							

**Add Facilities**

### My Services - In Progress

**Note:** To edit or resume working on an "In Progress" item, please click on the appropriate number in the ID column.

ID	Application Name	Facility Name	Description	Status	Created Date	Last Modified Date	View	History	Remove
----	------------------	---------------	-------------	--------	--------------	--------------------	------	---------	--------



NJDEP Online - Windows Internet Explorer

https://www11.state.nj.us/DEP\_RSP/Orchestrate.do

File Edit View Favorites Tools Help

Google Search

NJDEP Online

Skip Navigation

njhome | citizen | business | government | services A to Z | departments

new jersey njdep department of environmental protection

njdep\_online

njdep home | about dep | index by topic | programs/units | dep online

My Workspace User Profile Certifications Payments Documents and Forms Permit Folder

Edit Personal Info Request Cert PIN Edit Facility Selection Favorite Contacts Security Administration

Version: 4.6  
Currently logged in: LARRY SI (LSI) Help | Logout

### FACILITY SEARCH RESULTS

Facility	Facility ID	Program
<input type="checkbox"/> CENTURY PROJECTOR CORP-CAL CORP-	61085000000	Right To Know
<input checked="" type="checkbox"/> DEP AIR TEST SITE	61085	Air
<input type="checkbox"/> MICHAEL L & BRIAN O'REILLY	61085400000	Right To Know

Clicking a column title will sort the table by that column.

Clear/Check All

Add Selected Facilities Cancel

department: [njdep home](#) | [about dep](#) | [index by topic](#) | [programs/units](#) | [dep online](#)  
statewide: [njhome](#) | [citizen](#) | [business](#) | [government](#) | [services A to Z](#) | [departments](#) | [search](#)

Copyright © State of New Jersey, 1996-2004  
Department of Environmental Protection  
P. O. Box 402  
Trenton, NJ 08625-0402

Last Updated: June 24, 2004

Local intranet 100%

start NJEMS New Jersey Env... Welcome to DE... State of New Je... NJDEP Online - ... Novell GroupWi... Microsoft Power... 4:25 PM



NJDEP Online - Windows Internet Explorer

https://www11.state.nj.us/DEP\_RSP/Orchestrate.do

File Edit View Favorites Tools Help

Google Search

NJDEP Online

### Service Selection

**Note:** Access to this electronic service selection and submittal area is granted by selecting facilities using the [user profile](#). Some services are accessible without selecting facilities as shown below.

**Air Program**

- [General Permits](#)
- [Permit/Certificate Folder](#)
- [Permit/Certificate Renewals](#)
- [NOx RACT Combustion Adjustment](#)
- [Excess Emission Monitoring Performance Reports \(EEMPR\)](#)
- [Periodic Compliance Certification](#)
- [Diesel Retrofit Program](#)

**Configure Services**

### My Facilities/Program Interests

**Note:** You may add facilities by clicking the "Add Facilities" button below.

Facility Name	Facility ID	Program	Access Type	Change Access	Manage Security	View	Remove
DEP AIR TEST SITE	61085	Air	No Security Role				

Clicking column title will sort the table by that column.

**Add Facilities**

### My Services - In Progress

**Note:** To edit or resume working on an "In Progress" item, please click on the appropriate number in the ID column.

ID	Application Name	Facility Name	Description	Status	Created Date	Last	View	History	Remove
----	------------------	---------------	-------------	--------	--------------	------	------	---------	--------

Local intranet 100%

start NJEMS New Jersey Env... Welcome to DE... State of New Je... NJDEP Online - ... Novell GroupWi... Microsoft Power... 4:25 PM

Facility Selection - Microsoft Internet Explorer

File Edit View Favorites Tools Help

Address [https://www11.state.nj.us/DEP\\_eNJEMS/SubmittalSelection?SubmittalSelection\\_Subm](https://www11.state.nj.us/DEP_eNJEMS/SubmittalSelection?SubmittalSelection_Subm)

njhome | citizen | business | government | services A to Z | departments

new jersey njdep department of environmental protection njdep online

njdep home | about dep | index by topic | programs/units | dep online

LSI  
Version 5.6.7

Help | My Workspace | Logout

### Identification

Select a topic...

### Guidance Documents

#### Air General Permits

Select a topic...

#### Air Emissions

Select a topic...

#### Community Right To Know

Select a topic...

#### Invoices

Select a topic...

#### NJPDES

Select a topic...

#### Release & Pollution Prevention Reporting & Planning

Select a topic...

#### Private Well Testing Act

Select a topic...

#### Underground Storage Tanks

Select a topic...

### Facility Selection

The NJDEP Electronic Data Transfer Web Site allows users to access multiple facilities provided that each Facility ID is entered in the User's Profile. In order to access the appropriate facility, please select it from the menu below.

\* Facility ID/Program Interest ID:

Done

start Novell GroupWi... NJEMS New Jersey Env... Local Disk (C:) Microsoft Power... State of New Je... Facility Selectio... 3:29 PM

## Excess Emission Reports

LSI  
Version 5.6.7

ID: 61085

Facility Name: DEP AIR TEST SITE

[Help](#) | [My Workspace](#) | [Logout](#)

**Identification**  
 Select a topic ...

**Guidance Documents**  
 Air Excess Emissions  
 Select a topic ...

**EER Tools**  
 Select a topic ...

**Certification**  
 Select a topic ...

### Excess Emission Report Submittal Folder for DEP AIR TEST SITE

The following is a list of the facility's prior Electronic Excess Emission Report (eEER) activity and its status. To view your facility's NJEMS monitor inventory, click on the monitor folder under EER Tools.  
 Please verify that your submittals have been certified. If status states "Awaiting EER Certification," your submittal is not complete. Certify submittals by selecting "EER Certification" from the menu.

Year, Quarter	Subject Item	Spreadsheet ID	Status	Creation Date
2007,Q4	U 2	10722075	Awaiting EER Certification	01-07-2008
2007,Q4	U 1	10712053	Spreadsheet Submitted	01-02-2008
2007,Q3	U 1	6610365	Awaiting EER Certification	11-25-2007
2007,Q3	E 1	6569988	Awaiting EER Certification	10-31-2007
2007,Q4	U 100	6567784	Spreadsheet Created	10-30-2007
2007,Q4	U 2	6566946	Spreadsheet Created	10-30-2007
2007,Q4	U 1	6567549	Spreadsheet Submitted	10-30-2007
2007,Q2	U 1	6358597	Spreadsheet Created	07-24-2007
2007,Q1	U 2	6205589	Spreadsheet Created	05-01-2007
2007,Q2	E 1	6070860	Spreadsheet Created	04-26-2007

2003,Q2	U 100	1541094	Spreadsheet Created	04-16-2003
2003,Q1	U 100	1217282	Spreadsheet Submitted	02-03-2003
2002,Q4	E 1	1213805	Spreadsheet Created	01-28-2003
2002,Q4	U 100	1145361	Spreadsheet Created	10-29-2002
2002,Q2	E 1	1142891	Spreadsheet Created	10-24-2002
2002,Q2	E 1	1011062	Spreadsheet Submitted	06-27-2002
2002,Q1	U 100	977762	DEP Reviewed - Submittal Approved	05-09-2002
2002,Q1	E 1	901950	DEP Reviewed - Submittal Approved	03-07-2002
2001,Q4	E 1	856042	DEP Reviewed - Submittal Approved	11-27-2001
2001,Q1	U 100	579003	DEP Reviewed - Submittal Approved	05-02-2001

[Create New EER](#)

[contact dep](#) | [privacy notice](#) | [legal statement](#) | [accessibility statement](#) ⓘ

department: [nidep home](#) | [about dep](#) | [index by topic](#) | [programs/units](#) | [deponline](#)  
 statewide: [njhome](#) | [citizen](#) | [business](#) | [government](#) | [services A to Z](#) | [departments](#) | [search](#)

Copyright © State of New Jersey, 1996-2004  
 Department of Environmental Protection  
 P. O. Box 402  
 Trenton, NJ 08625-0402



### Excess Emission Reports

LSI  
Version 5.6.7

ID: 61085

Facility Name: DEP AIR TEST SITE

[Help](#) | [My Workspace](#) | [Logout](#)

- Identification**  
Select a topic...
- Guidance Documents**  
**Air Excess Emissions**  
Select a topic...
- EER Tools**  
Select a topic...
- Certification**  
Select a topic...

#### Facility Profile

Your facility location address and mailing address are displayed. If you would like to change the [mailing address](#) for your facility you may do so through the Edit Facility Profile menu option located under EER Tools on the left side of the screen.

Facility ID Number: **61085**  
 Facility Name: DEP AIR TEST SITE  
 Street Address: 401-428 E STATE ST  
 THIS IS LINE 2  
 THIS IS LINE 3  
 TRENTON, NJ 08645

Mailing Address: 401 E STATE ST  
 THIS IS LINE 2  
 THIS IS LINE 3  
 TRENTON, NJ 08645

#### Facility Contact(s)

You may enter one facility contact for this Excess Emission Report. NOTE: Required fields are indicated with an Asterisk (\*).

1) Contact Person

* Name:	<input type="text" value="TEST TEST"/>	* Organization:	<input type="text" value="NJDEP"/>
* Title:	<input type="text" value="TEST TITLE"/>	Organization Type:	<input type="text" value="State"/>

THIS IS LINE 2  
THIS IS LINE 3  
TRENTON, NJ 08645

### Facility Contact(s)

You may enter one facility contact for this Excess Emission Report. NOTE: Required fields are indicated with an Asterisk (\*).

#### 1) Contact Person

* Name:	<input type="text" value="LARRY SI"/>	* Organization:	<input type="text" value="NJDEP"/>
* Title:	<input type="text" value="ENGINEER"/>	Organization Type:	<input type="text" value="State"/>
Contact Type:	<input type="text" value="Environmental Officer"/>	NJ EIN:	<input type="text"/>
* Phone:	<input type="text" value="8566143601"/>	Mailing Address:	<input type="text" value="2 RIVERSIDE DRIVE"/>
Fax:	<input type="text"/>	Address Line 2:	<input type="text"/>
Other:	<input type="text"/>	Address Line 3:	<input type="text"/>
Type:	<input type="text" value="Mobile"/>	City:	<input type="text" value="CAMDEN"/>
* E-mail:	<input type="text" value="LARRY.SI@DEP.STATE.NJ.US"/>	State:	<input type="text" value="New Jersey"/>
		Zip:	<input type="text" value="08103"/>

**Continue**

[contact dep](#) | [privacy notice](#) | [legal statement](#) | [accessibility statement](#) 

department: [njdep home](#) | [about dep](#) | [index by topic](#) | [programs/units](#) | [deponline](#)  
statewide: [nihome](#) | [citizen](#) | [business](#) | [government](#) | [services A to Z](#) | [departments](#) | [search](#)



## Excess Emission Reports

LSI ID: 61085 Facility Name: DEP AIR TEST SITE Help | My Workspace | Logout  
Version 5.6.7

**Identification**  
select a topic ...

**Guidance Documents**  
Air Excess Emissions  
select a topic ...

**EER Tools**  
select a topic ...

**Certification**  
select a topic ...

The following is a list of analyzers that are currently on inventory in the DEP's NJEMS system. This data is based on a facility's monitoring protocol submittals to the Bureau of Technical Services and prior EEMPR submittals. Select the subject items for which you are requesting a pre-filled Excess Emission Monitoring Performance Report spreadsheet. A separate spreadsheet will be built for each Subject Item selected.

### Excess Emission Report Monitor Selection for DEP AIR TEST SITE

Select	Subject Item	OS	Monitor ID	Parameter Monitored	Manufacturer	Model No.	Serial Number	Comments
<input type="checkbox"/>	E 1	3	CO		Air Instruments and Measurements	All	3232323	PCP000001 Boiler
	E 1	4	VOC		Air Instruments and Measurements	All	567456456	PCP000001 Boiler
	E 1	5	Opacity		Bovar	All	676767	PCP000001 Boiler
<input checked="" type="checkbox"/>	U 1	S	1	CO	California Analytical Instruments	All	1234	
	U 1	S	2	O2	M&C Associates	All	5678	
<input type="checkbox"/>	U 2	S	1	Opacity	Acme	AJ-657	test	
<input type="checkbox"/>	U 100	S	1	Formaldehyde	Acme	AJ-657	1234	
	U 100	S	2	Total Non-Me	Acme	AJ-657	2345	
	U 100	S	3	Methyl alcohol	Acme	AJ-657	3456	
	U 100	S	4	HAPs (Total)	Acme	AJ-657	4567	

**Continue**

[njhome](#) | [citizen](#) | [business](#) | [government](#) | [services A to Z](#) | [departments](#)  
 **njdep**  
 new jersey department of environmental protection njdep *online*  
[njdep home](#) | [about dep](#) | [index by topic](#) | [programs/units](#) | [dep online](#)

## Excess Emission Reports

ID: 61085

Facility Name: DEP AIR TEST SITE

[Help](#) | [My Workspace](#) | [Logout](#)

LSI  
Version 5.6.7

- Identification**  
Select a topic ...
- Guidance Documents**  
**Air Excess Emissions**  
Select a topic ...
- EER Tools**  
Select a topic ...
- Certification**  
Select a topic ...

### Reporting Period

Select the year and quarter for which you are submitting an Excess Emission Report.

Year:

2007

Quarter:

Q4 (December 31)

[Request Spreadsheet](#)

[contact dep](#) | [privacy notice](#) | [legal statement](#) | [accessibility statement](#) 

department: [njdep home](#) | [about dep](#) | [index by topic](#) | [programs/units](#) | [dep online](#)  
statewide: [njhome](#) | [citizen](#) | [business](#) | [government](#) | [services A to Z](#) | [departments](#) | [search](#)

Copyright ©State of New Jersey, 1996-2004  
Department of Environmental Protection  
P. O. Box 402  
Trenton, NJ 08625-0402

Last Updated: June 24, 2004



[njhome](#) | [citizen](#) | [business](#) | [government](#) | [services A to Z](#) | [departments](#)

 **njdep**  
new jersey department of environmental protection

[njdep online](#)

[njdep home](#) | [about dep](#) | [index by topic](#) | [programs/units](#) | [dep online](#)

## Excess Emission Reports

ID: 61085

Facility Name: DEP AIR TEST SITE

[Help](#) | [My Workspace](#) | [Logout](#)

LSI  
Version 5.6.7

### Identification

Select a topic...

### Guidance Documents

### Air Excess Emissions

Select a topic...

### EER Tools

Select a topic...

### Certification

Select a topic...

**One or more spreadsheets has been requested. You will receive e-mail notification when they are ready.**

[Continue](#)

### Excess Emission Reports

ID: 61085

Facility Name: DEP AIR TEST SITE

Help | My Workspace | Logout

LSI  
Version 5.6.7

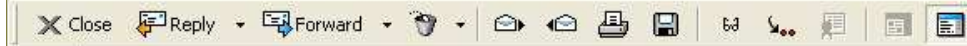
#### Excess Emission Report Submittal Folder for DEP AIR TEST SITE

- Identification
- Guidance Documents
- Air Excess Emissions
- EER Tools
- Certification

The following is a list of the facility's prior Electronic Excess Emission Report (eEER) activity and its status. To view your facility's NJEMS monitor inventory, click on the monitor folder under EER Tools.

Please verify that your submittals have been certified. If status states "Awaiting EER Certification," your submittal is not complete. Certify submittals by selecting "EER Certification" from the menu.

Year, Quarter	Subject Item	Spreadsheet ID	Status	Creation Date
2007,Q4	U 2	10726247	Spreadsheet Requested	
2007,Q4	U 1	10726245	Spreadsheet Requested	
2007,Q4	U 2	10722075	Awaiting EER Certification	01-07-2008
2007,Q4	U 1	10712053	Spreadsheet Submitted	01-02-2008
2007,Q3	U 1	6610365	Awaiting EER Certification	11-25-2007
2007,Q3	E 1	6569988	Awaiting EER Certification	10-31-2007
2007,Q4	U 100	6567784	Spreadsheet Created	10-30-2007
2007,Q4	U 2	6566946	Spreadsheet Created	10-30-2007
2007,Q4	U 1	6567549	Spreadsheet Submitted	10-30-2007
2007,Q2	U 1	6358597	Spreadsheet Created	07-24-2007



Mail Properties Personalize

**From:** <DEP@state.nj.us> 01/08 3:48 PM  
**To:** <LARRY.SI@DEP.STATE.NJ.US>  
**Subject:** Requested EER Spreadsheet

The pre-filled EER spreadsheet, ID 10726245, has been created by the New Jersey Department of Environmental Protection. It is available in the EER Inbox for your facility and can be found at: <https://portal01.state.nj.us/>

## Excess Emission Reports

LSI  
Version 5.6.7

ID: 61085

Facility Name: DEP AIR TEST SITE

[Help](#) | [My Workspace](#) | [Logout](#)

**Identification**  
 Select a topic ...

**Guidance Documents**  
 Air Excess Emissions  
 Select a topic ...

**EER Tools**  
 Select a topic ...  
 Select a topic ...  
 Edit Facility Profile  
 Create New EER  
 Monitor Folder  
**EER Submittal Folder**  
**EER Spreadsheet Inbox**  
 EER Spreadsheet Outbox  
 Permit/Certificate Folder

### Excess Emission Report Submittal Folder for DEP AIR TEST SITE

The following is a list of the facility's prior Electronic Excess Emission Report (eEER) activity and its status. To view your facility's NJEMS monitor inventory, click on the monitor folder under EER Tools.  
 Please verify that your submittals have been certified. If status states "Awaiting EER Certification," your submittal is not complete. Certify submittals by selecting "EER Certification" from the menu.

Year, Quarter	Subject Item	Spreadsheet ID	Status	Creation Date
2007,Q4	U 1	10726245	Spreadsheet Created	01-08-2008
2007,Q4	U 2	10726247	Spreadsheet Created	01-08-2008
2007,Q4	U 2	10722075	Awaiting EER Certification	01-07-2008
2007,Q4	U 1	10712053	Spreadsheet Submitted	01-02-2008
2007,Q3	U 1	6610365	Awaiting EER Certification	11-25-2007
2007,Q3	E 1	6569988	Awaiting EER Certification	10-31-2007
2007,Q4	U 100	6567784	Spreadsheet Created	10-30-2007
2007,Q4	U 2	6566946	Spreadsheet Created	10-30-2007
2007,Q4	U 1	6567549	Spreadsheet Submitted	10-30-2007
2007,Q2	U 1	6358597	Spreadsheet Created	07-24-2007

### Excess Emission Reports

ID: 61085

Facility Name: DEP AIR TEST SITE

Help | My Workspace | Logout

LSI  
Version 5.6.7

- Identification**  
Select a topic...
- Guidance Documents**  
Air Excess Emissions  
Select a topic...
- EER Tools**  
Select a topic...
- Certification**  
Select a topic...

### Excess Emission Report Spreadsheet Inbox for DEP AIR TEST SITE

Spreadsheet ID	Status	Subject Item	Year, Quarter	Creation Date
<a href="#">6566946</a>	Spreadsheet Created	U 2	2007, Q4	10-30-2007
<a href="#">6567784</a>	Spreadsheet Created	U 100	2007, Q4	10-30-2007
<a href="#">10726247</a>	Spreadsheet Created	U 2	2007, Q4	01-08-2008
<a href="#">10726245</a>	Spreadsheet Created	U 1	2007, Q4	01-08-2008

\*The spreadsheets that are downloaded from this page contain macros which were created by the State of New Jersey Department of Environmental Protection. When the spreadsheet is opened, you will be prompted to choose whether or not to enable the macros. The macros must be enabled in order for the spreadsheet to function properly.

[contact dep](#) | [privacy notice](#) | [legal statement](#) | [accessibility statement](#)

departments: [njdep home](#) | [about dep](#) | [index by topic](#) | [programs/units](#) | [deponline](#)  
statewide: [njhome](#) | [citizen](#) | [business](#) | [government](#) | [services A to Z](#) | [departments](#) | [search](#)

Copyright © State of New Jersey, 1996-2004  
Department of Environmental Protection  
P. O. Box 402

## Excess Emission Reports

LSI  
Version 5.6.7

ID: 61085

Facility Name: DEP AIR TEST SITE

Help | My Workspace | Logout

- Identification
- Guidance Documents
- Air Excess Emissions
- EER Tools
- Certification

### Spreadsheet ID

- [6566946](#)
- [6567784](#)
- [10726247](#)
- [10726245](#)

**File Download**

Do you want to open or save this file?

 Name: 10726247.xls  
 Type: Microsoft Excel Worksheet  
 From: www11.state.nj.us

 While files from the Internet can be useful, some files can potentially harm your computer. If you do not trust the source, do not open or save this file. [What's the risk?](#)

\*The spreadsheets that are downloaded by the State of New Jersey Department of Environmental Protection. When the spreadsheet is opened, you will be prompted to choose whether or not to enable the macros. The macros must be enabled in order for the spreadsheet to function properly.

[contact dep](#) | [privacy notice](#) | [legal statement](#) | [accessibility statement](#)

departments: [njdep home](#) | [about dep](#) | [index by topic](#) | [programs/units](#) | [deponline](#)  
 statewide: [njhome](#) | [citizen](#) | [business](#) | [government](#) | [services A to Z](#) | [departments](#) | [search](#)

Copyright © State of New Jersey, 1996-2004  
 Department of Environmental Protection  
 P. O. Box 402

Access Emission Reports - Microsoft Internet Explorer

File Edit View Favorites Tools Help

Address: https://www11.state.nj.us/DEP\_eNJEMS/EERSpreadsheetInbox

njhome | citizen | business | government | services A to Z | departments

njdep new jersey department of environmental protection njdep online

njdep home | about dep | index by topic | programs/units | dep online

## Excess Emission Reports

ID: 61085  
Facility Name: DEP AIR TEST SITE

LSI  
Version 5.6.7

Help | My Workspace | Logout

**Identification**  
Select a topic...

**Guidance Documents**

**Air Excess Emissions**  
Select a topic...

**EER Tools**  
Select a topic...

**Certification**  
Select a topic...

**Spreadsheet ID**

[6566946](#)

[6567784](#)

[10726247](#)

[10726245](#)

\*The spreadsheets that are  
Protection. When the spreads  
order for the spreadsheet to f

File Download

Save As

Save in: Desktop

My Documents	CAT.xls
My Computer	ecg 2 q07 6333916.xls
My Network Places	EER.xls
5032326.xls	eerSubmittal.xls
5362717(1).xls	FACILITIESwithCEMS.xls
6205589.xls	Idling.xls
6333917.xls	MAN2.xls
6337578.xls	Target.xls
6337579.xls	ttt.xls
6351286.xls	U7 DWT report 3Q07.xls
6359252.xls	
6373869.xls	
6546074.xls	
10712053Unlocked.xls	
AIT072407_2.xls	

File name: 10726247.xls

Save as type: Microsoft Excel worksheet

**ation Date**

0-2007

0-2007

8-2008

8-2008

partment of Environmental  
cross must be enabled in

departments: njdep home | about d  
statewide: njhome | citizen | business | government | services A to Z | departments | search

Copyright © State of New Jersey, 1996-2004  
Department of Environmental Protection  
P. O. Box 402

Done

start Novell Grou... NJEMS New Jersey ... Local Disk (C:) Microsoft Po... State of Ne... Excess Emis... File Download 4:04 PM

### Excess Emission Reports

LSI  
Version 5.6.7

ID: 61085

Facility Name: DEP AIR TEST SITE

Help | My Workspace | Logout

**Identification**  
 Select a topic ...  
**Guidance Documents**  
**Air Excess Emissions**  
 Select a topic ...  
**EER Tools**  
 Select a topic ...  
**Certification**  
 Select a topic ...

- Spreadsheet ID**  
[6566946](#)  
[6567784](#)  
[10726247](#)  
[10726245](#)

**Download complete**

Download Complete

Saved:  
10726245.xls from www11.state.nj.us

Downloaded: 640 KB in 2 sec  
 Download to: C:\Documents and Sett...\10726245.xls  
 Transfer rate: 320 KB/Sec

Close this dialog box when download completes

Open Open Folder Close

**Sheet Inbox**

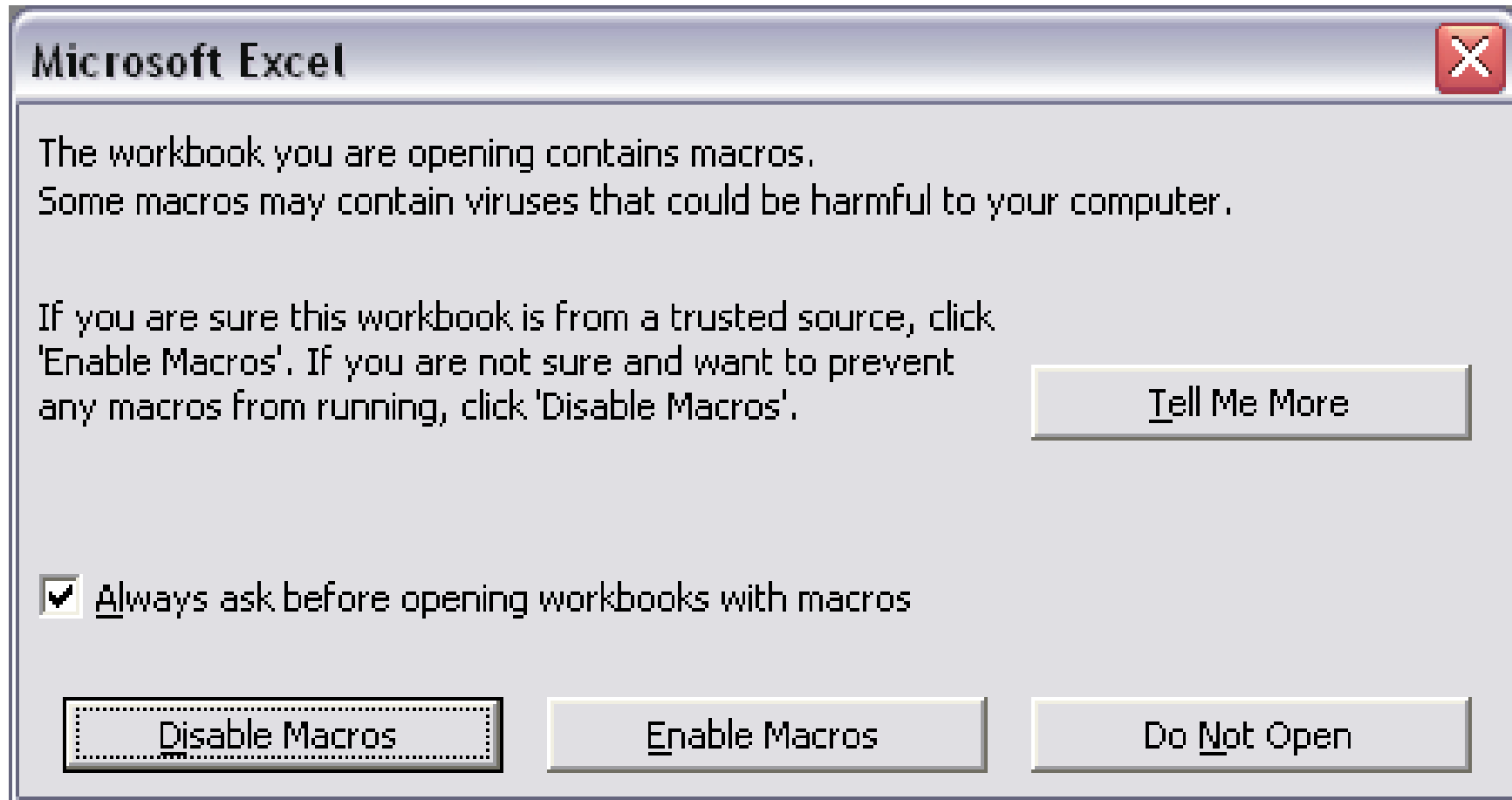
Quarter	Creation Date
Q4	10-30-2007
Q4	10-30-2007
Q4	01-08-2008
Q4	01-08-2008

\*The spreadsheets that are downloaded by the State of New Jersey Department of Environmental Protection. When the spreadsheet is opened, you will be prompted to choose whether or not to enable the macros. The macros must be enabled in order for the spreadsheet to function properly.

[contact dep](#) | [privacy notice](#) | [legal statement](#) | [accessibility statement](#)



# Enable Macros



Microsoft Excel - 10726245.xls

File Edit View Insert Format Tools Data Window Help

Arial 10 B I U

C3 =

	A	B	C	D	E	F	G	H	I	J	K	L	M	N	O	P	Q	
1	<b>NJ DEP Excess Emissions Report: 10726245</b>																	
2																		
3	<b>DEP AIR TEST SITE</b>																	
4																		
5		<b>Validate Spreadsheet</b>					<b>Lock Spreadsheet For Submission</b>											
6																		
7																		
8																		
9																		
10																		
11																		
12																		
13																		
14																		
52																		
53																		
54																		
55																		
56																		
57																		
58																		
59																		
60																		
61																		
62																		
63																		
64																		
65																		
66																		
67																		
68																		
69																		
70																		
71																		

**\* After completing all tabs of the EER spreadsheet, return to this tab to validate it by clicking the 'Validate Spreadsheet' button above. After the spreadsheet has been validated, lock the spreadsheet by clicking the 'Lock Spreadsheet For Submission' button above. After Locking the Spreadsheet, proceed to your company's EER Oubox to upload the spreadsheet to the Department and then certify the submittal.**

**\* If no reportable exceedances, check the "No Excess Emissions" checkbox on the CMS Excursion tab.**

**Spreadsheet Validated**

The spreadsheet has been validated. It can now be locked and submitted to the DEP.

OK

Admin / Facility Profile / Source Info / Gen. Monitor Info / Monitor Audit Data / Continuous Opacity Monitor / Continuous Opacity Downtime / Monitor 1

Draw AutoShapes

start Novell Grou... NJEMS New Jersey ... Local Disk (C:) Microsoft Po... State of Ne... Excess Emis... Microsoft Ex... 4:15 PM

15987978[1].xls [Protected View] - Microsoft Excel

File Home Insert Page Layout Formulas Data Review View

Protected View This file originated from an Internet location and might be unsafe. Click for more details. Enable Editing

E7

	A	B	C	D	E	F	G	H	I	J	K	L	M	N	O	P
1	<b>NJ DEP Excess Emissions Report</b>															
2																
3	<b>DEP AIR TEST SITE</b>															
4																
5																
6	<b>I. Facility Information</b>															
7																
8	Reporting Period Ending:	03/31/10														
9	Days in Reporting Period:	90														
10																
11	Organization Name:	DEP AIR TEST SITE														
12	Plant Location:	TEST PI														
13	Mailing Address:	401 E STATE ST														
14		THIS IS LINE 2														
15		THIS IS LINE 3														
16		TRENTON	NJ	08625												
17																
18	Contact Person:	TEST AIR PERMIT INFORMATION CONTACT														
19	Title:	TEST TITLE 1														
20	Contact Type:	Accountant														
21	Phone:	(908)888-8888														
22	Fax:															
23	Email Address:	janet.johnson.@dep.state.nj.us														
24																
25																
26																
27																
28																
29																
30																
31																
32																
33																
34																
35																
36																
37																
38																
39																
40																
41																
42																
43																
44																
45																
46																
47																
48																
49																

Admin **Facility Profile** Source Info Gen. Monitor Info Monitor Audit Data Continuous Opacity Monitor Continuous Opacity Downtime Monitor 1 Downtime

Ready 100%



Protected View This file originated from an Internet location and might be unsafe. Click for more details. Enable Editing

B8

	A	B	C	D	E	F	G	H
1	<b>NJ DEP Excess Emissions Report</b>							
2								
3	<b>DEP AIR TEST SITE</b>							
4								
5								
6	<b>IV. Monitor Information</b>							
7								
8								
9								
10	<b>Monitor</b>	<b>1</b>	<b>2</b>					
11	<b>Parameter Monitored</b>	CO	O2					
12	<b>Manufacturer</b>	prnia Analytical Instrum	M&C Associates					
13	<b>Model #</b>	All	All					
14	<b>Serial #</b>	1234	5678					
15	<b>Operating Range (specify units)</b>	Parts per Million	%					
16	<b>Span Level Calibration (specify units)</b>	Parts per Million	%					
17	<b>Installation Date</b>							
18	<b>Start Up Date</b>							
19	<b>Parameter Standard (specify units)</b>							
20	<b>Averaging Time (specify units &amp; whether rolling or block)</b>							
21	<b>Hours Of Operation</b>							
22	<b>Final Date of PST</b>							
23	<b>Date of Certification</b>	01/01/00	01/01/00					
24								
25								
26								
27	<b>Monitor</b>	<b>1</b>	<b>2</b>					
28	<b>Parameter Monitored</b>	CO	O2					
29	<b>Did you conduct a RATA this quarter?</b>							
30	<b>Did you conduct a CGA this quarter?</b>							
31	<b>Did you conduct a THC Part 266 CE/PST this quarter?</b>							
32								
33	<b>Do you have a CERTIFIED opacity monitor?</b>							
34								
35								
36								
46								
47								
48								
49								
50								
51								
52								
53								
54								
55								
56								
57								

File Home Insert Page Layout Formulas Data Review View

Cut Copy Paste Format Painter Clipboard

Arial 10 Font

Wrap Text Merge & Center Alignment

Number

Conditional Formatting Styles

Format as Table Cell Styles

Insert Delete Format Cells

AutoSum Fill Clear Editing

Sort & Filter Find & Select

	A	B	C	D	E	F	G	H
1	<b>NJ DEP Excess Emissions Report</b>							
2								
3	<b>DEP AIR TEST SITE</b>							
10	<b>B. Relative Accuracy Test Audit Data</b>							
11								
12	Monitor	1	2					
13	Parameter Monitored	CO	O2					
14	Performance Specification	PS-4 (CO)	PS-3 (O2, CO2)					
15	Date of RATA							
16	Reference Methods Used							
17	Average RM Value							
18	Average CEMS Value							
19	Absolute Value of Mean Difference	0.00	0.00					
20	Confidence Coefficient							
21	% Relative Accuracy (Avg RM)	#DIV/0!	#DIV/0!					
22	% Relative Accuracy (Parameter Standard)	#VALUE!	#VALUE!					
23								
24								
25	<b>C. Cylinder Gas Audit Data</b>							
26								
27	Monitor	1	2					
28	Parameter Monitored	CO	O2					
29	Gas	CO	O2					
30	Date of Audit							
31	Cylinder ID # by Pollutant - Mid							
32	- Low							
33	Date of Expiration - Mid							
34	- Low							
35	Type of Certification - Mid							
36	- Low							
37	Certified Audit Value - Mid							
38	- Low							
39	CEMS Response Value - Mid							
40	- Low							
41	% Accuracy - Mid	#DIV/0!	#DIV/0!					
42	- Low	#DIV/0!	#DIV/0!					
43								
44								
45	<b>D. Total Hydrocarbon Monitors</b>							
46	<i>(If certified under 40 CFR Part 266 Appendix IX)</i>							
47	Monitor	1	2					
48	Parameter Monitored	CO	O2					
49	Date of Audit							
50	Calibration Gas Value (ppm) - High							
51	- Mid							

1	<b>NJ DEP Excess Emissions Report</b>												
2													
3	DEP AIR TEST SITE												
7													
8	<b>IV. Monitor Information (cont.)</b>												
9													
10	<b>D. Continuous Opacity Monitors Data Assessment</b>												
11													
12	Date performance audit conducted:												
13													
14	1. Stack Exit Correlation Error												
15	a) Actual pathlength correction factor:												
16	b) Correct pathlength correction factor:												
17	c) Stack exit correlation error:												
18													
19	2. Active Fault Indicators (error messages present):												
20													
21	3. Zero and Upscale Calibration Check Responses:												
22		Correct Value	Response	Difference									
23	Zero			0.00									
24	Upscale			0.00									
25													
26	4. Zero Compensation Value (percent opacity):												
27	5. Optical Alignment:												
28	6. Dust Accumulation of Optical Surfaces:												
29		Initial Opacity	Final Opacity	Difference									
30	Window 1			0.00									
31	Window 2			0.00									
32	Total	0.00%	0.00%	0.00									
33													
34	7. Calibration Error												
35	a) Filter Values (equivalent opacity):												
36		Low											
37		Med											
38		High											
39	b) Test Results												
40		Low	Mid	High									
41	1												
42	2												
43	3												
44	4												
45	5												
46													
47	c) Calibration Error:												
48		Low											







15987978[1].xls [Compatibility Mode] - Microsoft Excel

File Home Insert Page Layout Formulas Data Review View

Clipboard Font Alignment Number Styles Cells Editing

15

A B C D E F G H I J K L M N O P Q R T

1 **NJ DEP Excess Emissions Report**

2

3 **DEP AIR TEST SITE**

4

5 **VII. Supporting Data (Enter Supporting Data Below)**

6

7 Include summary results for the following assessments:

8 (Data may be entered or pasted as text into cells below or scanned reports may be included as embedded objects.)

9

10 <b><i>For CEMS:</i></b>	<b><i>For COMS:</i></b>
11 Relative Accuracy Test Audits (RATA)	Calibration determination error
12 Cylinder Gas Audits (CGA)	Response time determination
13 Calibration Error (CE)	24 hour zero calibration drift determination
14 Yearly Performance Test	

15

16  I certify that all required supporting data has been entered below.

17

18 **To create a new embedded object:** (may be used to embed scanned report image)

19 1. Click the worksheet or chart where you want to place the embedded object.

20 2. On the **Insert** menu, click **Object**, and then click the **Create New** tab.

21 3. In the **Object type** box, click the type of object you want to create.

22

23 **Enter supporting data in cells below:**

24

25

26

27

28

29

30

31

32

33

34

35

36

37

38

39

40

41

42

43

44

45

Continuous Opacity Monitor / Continuous Opacity Downtime / Monitor 1 Downtime / Monitor 2 Downtime / CMS Excursion / **Supporting Data**

Ready 100%

## Common eEER Questions.



- **MACROS:** Upon opening the Excel Spreadsheet, always click **Enable**. You may need to lower security in order to enable Macros. Go to Tools > Macros > Security > Low.
- The source monitor downtime reported on the “General Monitor Info Tab” has to match the downtime reported in the “Monitor Downtime tab”.
- **New CEMs:** Facilities can’t change anything on the “General Monitor Info Tab”. Please send the new monitor info to the Inspector. The Inspector can update the monitor info on NJEMS.
- Not enough rows for downtime or Excursions? Call your inspector.
- No Military time allowed.

## Common eEER Questions. Part 2



- Please don't enter any signs on Row 19 under the "General Monitor Info Tab". Just enter a number followed by a single space then the units. For Example: 250 ppm = Good <= 250 ppm = Bad
- ADD all additional info under the "Supporting Data tab".  
ATTACHMENTS: We recommend **jpg** files. Please don't attached **pdf** files greater than 5 pages. The files will be to big and won't upload properly.
- SENDING TO EPA: eEERs do not automatically go to EPA. Please print out a copy and mail to EPA with a cover letter if required.

Microsoft Excel - 10726245.xls

File Edit View Insert Format Tools Data Window Help

Arial 10 B I U

C3 =

	A	B	C	D	E	F	G	H	I	J	K	L	M	N	O	P	Q	
1	<b>NJ DEP Excess Emissions Report: 10726245</b>																	
2																		
3	<b>DEP AIR TEST SITE</b>																	
4																		
5			<b>Validate Spreadsheet</b>															
6							<b>Lock Spreadsheet For Submission</b>											
7																		
8																		
9																		
10																		
11																		
12																		
13																		
14																		
52																		
53																		
54																		
55																		
56																		
57																		
58																		
59																		
60																		
61																		
62																		
63																		
64																		
65																		
66																		
67																		
68																		
69																		
70																		
71																		

**Validate Spreadsheet**      **Lock Spreadsheet For Submission**

**\* After completing all tabs of the EER spreadsheet, return to this tab to validate it by clicking the 'Validate Spreadsheet' button above. After the spreadsheet has been validated, lock the spreadsheet by clicking the 'Lock Spreadsheet For Submission' button above. After Locking the Spreadsheet, proceed to your company's EER Oubox to upload the spreadsheet to the Department and then certify the submittal.**

**\* If no reportable exceedances, check the "No Excess Emissions" checkbox on the CMS Excursion tab.**

**Spreadsheet Validated**

The spreadsheet has been validated. It can now be locked and submitted to the DEP.

OK

Admin / Facility Profile / Source Info / Gen. Monitor Info / Monitor Audit Data / Continuous Opacity Monitor / Continuous Opacity Downtime / Monitor 1

Draw AutoShapes

start Novell Grou... NJEMS New Jersey ... Local Disk (C:) Microsoft Po... State of Ne... Excess Emis... Microsoft Ex... 4:15 PM

Microsoft Excel - 10726245.xls

File Edit View Insert Format Tools Data Window Help

Arial 10 B I U

C3 =

	A	B	C	D	E	F	G	H	I	J	K	L	M	N	O	P	Q	
1	<b>NJ DEP Excess Emissions Report: 10726245</b>																	
2																		
3	<b>DEP AIR TEST SITE</b>																	
4																		
5			<b>Validate Spreadsheet</b>															
6																		
7																		
8																		
9																		
10																		
11																		
12																		
13																		
14																		
52																		
53																		
54																		
55																		
56																		
57																		
58																		
59																		
60																		
61																		
62																		
63																		
64																		
65																		
66																		
67																		
68																		
69																		
70																		
71																		

**Lock Spreadsheet For Submission**

**\* After completing all tabs of the EER spreadsheet, return to this tab to validate it by clicking the 'Validate Spreadsheet' button above. After the spreadsheet has been validated, lock the spreadsheet by clicking the 'Lock Spreadsheet For Submission' button above. After Locking the Spreadsheet, proceed to your company's EER Oubox to upload the spreadsheet to the Department and then certify the submittal.**

**\* If no reportable emissions are shown, click the "No Excess Emissions" button on the CMS Exemption tab.**

**Lock Spreadsheet**

This action will lock the spreadsheet so that no further changes can be made. If you continue, you will be prompted for a filename to save an unlocked copy. Keep this unlocked copy after the spreadsheet has been submitted in the event that a change needs to be made and the spreadsheet needs to be re-submitted. If this unlocked copy is not kept, the spreadsheet will have to be completely re-done. Are you sure you want to continue?

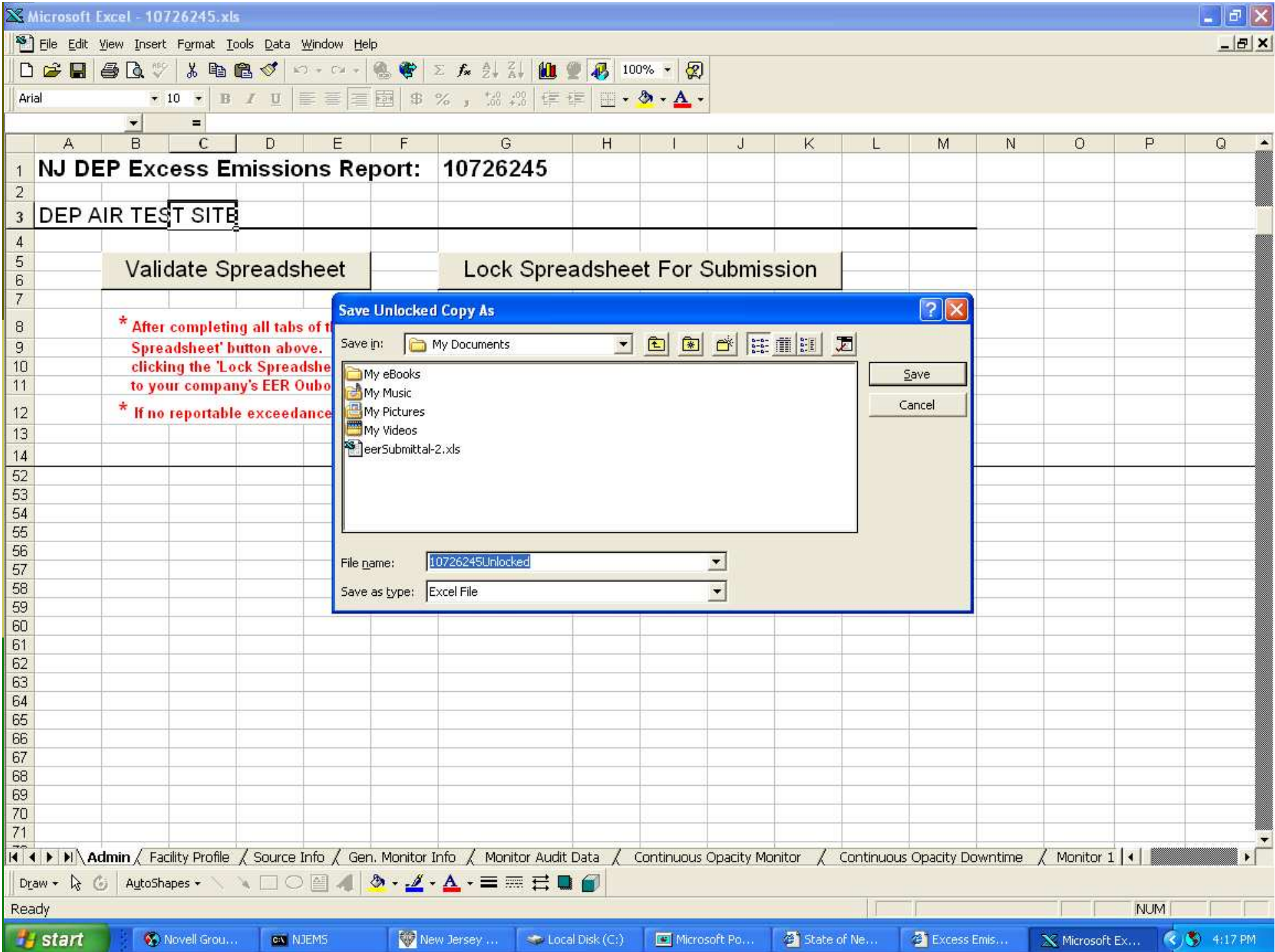
OK Cancel

Admin / Facility Profile / Source Info / Gen. Monitor Info / Monitor Audit Data / Continuous Opacity Monitor / Continuous Opacity Downtime / Monitor 1

Draw AutoShapes

NUM

start Novell Grou... NJEMS New Jersey ... Local Disk (C:) Microsoft Po... State of Ne... Excess Emis... Microsoft Ex... 4:16 PM



Microsoft Excel - 10726245.xls

File Edit View Insert Format Tools Data Window Help

Arial 10 B I U

1 **NJ DEP Excess Emissions Report: 10726245**

2

3 **DEP AIR TEST SITE**

4

5 **Validate Spreadsheet** **Lock Spreadsheet For Submission**

6

7

8 **\* After completing all tabs of the EER spreadsheet, return to this tab to validate it by clicking the 'Validate Spreadsheet' button above. After the spreadsheet has been validated, lock the spreadsheet by clicking the 'Lock Spreadsheet For Submission' button above. After Locking the Spreadsheet, proceed to your company's EER Oubox to upload the spreadsheet to the Department and then certify the submittal.**

9

10

11

12 **\* If no reportable exceedances, check the "No Excess Emissions" checkbox on the CMS Excursion tab.**

13

14

52

53

54

55

56

57

58

59

60

61

62

63

64

65

66

67

68

69

70

71

Admin / Facility Profile / Source Info / Gen. Monitor Info / Monitor Audit Data / Continuous Opacity Monitor / Continuous Opacity Downtime / Monitor 1

Draw AutoShapes

NUM

start Novell Grou... NJEMS New Jersey ... Local Disk (C:) Microsoft Po... State of Ne... Excess Emis... Microsoft Ex... 4:17 PM

**Microsoft Excel**

The spreadsheet has been locked and is ready to be submitted. The Confirmation Code for this spreadsheet is 194066. To Upload, retain your Confirmation Code and proceed to your company's EER Oubox found at the DEP's electronic data transfer website.

OK



### Excess Emission Reports

ID: 61085

Facility Name: DEP AIR TEST SITE

Help | My Workspace | Logout

LSI  
Version 5.6.7

**Identification**  
Select a topic...

**Guidance Documents**  
Air Excess Emissions  
Select a topic...

**EER Tools**  
Select a topic...  
 Edit Facility Profile  
 Create New EER  
 Monitor Folder  
 EER Submitted  
 EER Spreadsheet Inbox  
 EER Spreadsheet Outbox  
 Permitting

### Excess Emission Report Spreadsheet Outbox for DEP AIR TEST SITE

Use to post your completed spreadsheet to the eNJEMS Portal.

Spreadsheet ID	Status	Subject Item	Year, Quarter	Creation Date
6569988	Awaiting EER Certification	E 1	2007,Q3	10-31-2007
6610365	Awaiting EER Certification	U 1	2007,Q3	11-25-2007
10722075	Awaiting EER Certification	U 2	2007,Q4	01-07-2008

**\* Spreadsheet ID:**

- 1142891
- 1145361
- 1213805
- 1541094
- 1570050
- 1809355
- 1825357
- 1949833
- 2211626
- 2492505
- 2492506

Excess Emission Reports - Outbox - Microsoft Internet Explorer

File Edit View Favorites Tools Help

Address [https://www11.state.nj.us/DEP\\_eNJEMS/EERSpreadsheetOutbox](https://www11.state.nj.us/DEP_eNJEMS/EERSpreadsheetOutbox)

- 5497963
- 5507190
- 5507219
- 5553286
- 5680272
- 5763289
- 5934655
- 6070860
- 6205589
- 6358597
- 6566946
- 6567784
- 6569988
- 6610365
- 10722075
- 10726247
- 10726245

**Upload File Name:**

**Confirmation Code:**

If you did not record your confirmation code, reopen the locked spreadsheet and rerun "Lock Spread Sheet For Submission" from the Admin Tab making note of the confirmation code.

Pressing the *Upload* button will transfer your spreadsheet to the eNJEMS server. Please be patient, as this may take a few minutes.

The following chart can be used to estimate the time it will take to upload your file to the Portal.

File Size / Connection Speed	28.8 Kbps	56. Kbps	256 Kbps (High Speed)
500 K	3 min	1 min 30 sec	23 sec

start Novell GroupWi... NJEMS New Jersey Env... Local Disk (C:) Microsoft Power... State of New Je... Excess Emission... 4:20 PM

- 5497903
- 5507190
- 5507219
- 5553286
- 5680272
- 5763289
- 5934655
- 6070860
- 6205589
- 6358597
- 6566946
- 6567784
- 6569988
- 6610365
- 10722075
- 10726247
- 10726245

**Choose file**

Look in: Desktop

Recent Desktop My Documents My Computer My Network Places

10726245.xls  
 10726247.xls  
 13584107.211  
 20061020longterm.pdf  
 70506030.507  
 ACOamendment.doc  
 ACLUA.doc  
 AD.ppt  
 AIT072407\_2.xls  
 AONOCAPA-0502.doc  
 AONOCAPA-0601.doc  
 AONOCAPA-0601coverletter.doc  
 Camp Survey[1].doc  
 CashOT.doc  
 CAT.xls

Cats  
 cc\_20070824\_1626.reg  
 CCleaner  
 christmascanonrock-rm-full.rm  
 CMS Performance.doc  
 cognitiveandlateeffects.ram  
 Doc100.pdf  
 eCATS  
 ecg 2 q07 6333916.xls  
 EEMPRErrorMessage.doc  
 EER.xls  
 eerSubmittal.xls  
 ENFORCEMENT PRESENTATION  
 ENFORCEMENT PRESENTATION  
 eNJEMS.doc

File name: 10726245.xls  
 Files of type: All Files (\*.\*)

Open Cancel

**Upload File Name:**

**Confirmation Code:**

If you did not record your confirmation code, reopen the locked spreadsheet and rerun "Lock Spread Sheet For Submission" from the Admin Tab making note of the confirmation code.

**Upload** Pressing the *Upload* button will transfer your spreadsheet to the eNJEMS server. Please be patient, as this may take a few minutes.

The following chart can be used to estimate the time it will take to upload your file to the Portal.

File Size / Connection Speed	28.8 Kbps	56. Kbps	256 Kbps (High Speed)
500 K	3 min	1 min 30 sec	23 sec

- 5497903
- 5507190
- 5507219
- 5553286
- 5680272
- 5763289
- 5934655
- 6070860
- 6205589
- 6358597
- 6566946
- 6567784
- 6569988
- 6610365
- 10722075
- 10726247
- 10726245

**Upload File Name:**

C:\Documents and Settings\si\Desktop\10726245.xls

**Confirmation Code:**

If you did not record your confirmation code, reopen the locked spreadsheet and rerun "Lock Spread Sheet For Submission" from the Admin Tab making note of the confirmation code.

**Upload** Pressing the *Upload* button will transfer your spreadsheet to the eNJEMS server. Please be patient, as this may take a few minutes.

The following chart can be used to estimate the time it will take to upload your file to the Portal.

File Size / Connection Speed	28.8 Kbps	56. Kbps	256 Kbps (High Speed)
500 K	3 min	1 min 30 sec	23 sec

### Excess Emission Reports

LSI  
Version 5.6.7

ID: 61085

Facility Name: DEP AIR TEST SITE

[Help](#) | [My Workspace](#) | [Logout](#)

- Identification**  
Select a topic...
- Guidance Documents**
- Air Excess Emissions**  
Select a topic...
- EER Tools**  
Select a topic...
- Certification**  
Select a topic...

**Your EER Spreadsheet has been successfully uploaded.**

**Spreadsheet ID : 10726245**

**Filename : 10726245.xls**

**Size : 684032 bytes**

**Submittals are not complete until spreadsheets are certified. Certify spreadsheets by selecting EER Certification from the menu.**

**Continue**

## Excess Emission Reports

LSI  
Version 5.6.7

ID: 61085

Facility Name: DEP AIR TEST SITE

[Help](#) | [My Workspace](#) | [Logout](#)

- Identification
- Guidance Documents
- Air Excess Emissions
- EER Tools
- Certification
- EER Certification**

### Excess Emission Report Submittal Folder for DEP AIR TEST SITE

The following is a list of the facility's prior Electronic Excess Emission Report (eEER) activity and its status. To view your facility's NJEMS monitor inventory, click on the monitor folder under EER Tools. Please verify that your submittals have been certified. If status states "Awaiting EER Certification," your submittal is not complete. Certify submittals by selecting "EER Certification" from the menu.

Year, Quarter	Subject Item	Spreadsheet ID	Status	Creation Date
2007,Q4	U 1	10726245	Awaiting EER Certification	01-08-2008
2007,Q4	U 2	10726247	Spreadsheet Created	01-08-2008
2007,Q4	U 2	10722075	Awaiting EER Certification	01-07-2008
2007,Q4	U 1	10712053	Spreadsheet Submitted	01-02-2008
2007,Q3	U 1	6610365	Awaiting EER Certification	11-25-2007
2007,Q3	E 1	6569988	Awaiting EER Certification	10-31-2007
2007,Q4	U 100	6567784	Spreadsheet Created	10-30-2007
2007,Q4	U 2	6566946	Spreadsheet Created	10-30-2007
2007,Q4	U 1	6567549	Spreadsheet Submitted	10-30-2007
2007,Q2	U 1	6358597	Spreadsheet Created	07-24-2007

### Excess Emission Reports

ID: 61085

Facility Name: DEP AIR TEST SITE

Help | My Workspace | Logout

LSI  
Version 5.6.7

- Identification
- Guidance Documents
- Air Excess Emissions
- EER Tools
- Certification

Check the Excess Emission Report (Spreadsheet) that you wish to certify, then complete the certification below.

Select	Spreadsheet ID	Status	Subject Item	Year, Quarter	Creation Date
<input type="checkbox"/>	6569988	Awaiting EER Certification	E 1	2007, Q3	10-31-2007
<input type="checkbox"/>	6610365	Awaiting EER Certification	U 1	2007, Q3	11-25-2007
<input type="checkbox"/>	10722075	Awaiting EER Certification	U 2	2007, Q4	01-07-2008
<input checked="" type="checkbox"/>	10726245	Awaiting EER Certification	U 1	2007, Q4	01-08-2008

#### Certification of the CEMs Coordinator

"I certify under penalty of law that I believe the information provided in this document is true, accurate and complete. I am aware that there are significant civil and criminal penalties, including the possibility of fine or imprisonment or both, for submitting false, inaccurate or incomplete information."

Name of Certifying Party:

LSI

\* Personal Identification Number:

.....

Certify

Certification of your PIN constitutes an electronic signature of this Excess Emission Report in accordance with the aforementioned statement.

## Excess Emission Reports

LSI  
Version 5.6.7

ID: 61085  
Facility Name: DEP AIR TEST SITE

[Help](#) | [My Workspace](#) | [Logout](#)

### Identification

Select a topic...

### Guidance Documents

#### Air Excess Emissions

Select a topic...

### EER Tools

Select a topic...

### Certification

Select a topic...

**The CEMS Certification was successful. Your Excess Emission Report (spreadsheet) was transferred to the New Jersey Department of Environmental Protection for review.**

[Continue](#)





## Excess Emission Reports

ID: 61085

Facility Name: DEP AIR TEST SITE

[Help](#) | [My Workspace](#) | [Logout](#)

LSI  
Version 5.6.7

### Excess Emission Report Submittal Folder for DEP AIR TEST SITE

- Identification
- Guidance Documents
- Air Excess Emissions**
- EER Tools
- Certification

The following is a list of the facility's prior Electronic Excess Emission Report (eEER) activity and its status. To view your facility's NJEMS monitor inventory, click on the monitor folder under EER Tools.  
Please verify that your submittals have been certified. If status states "Awaiting EER Certification," your submittal is not complete. Certify submittals by selecting "EER Certification" from the menu.

Year, Quarter	Subject Item	Spreadsheet ID	Status	Creation Date
2007,Q4	U 1	10726245	Spreadsheet Submitted	01-08-2008
2007,Q4	U 2	10726247	Spreadsheet Created	01-08-2008
2007,Q4	U 2	10722075	Awaiting EER Certification	01-07-2008
2007,Q4	U 1	10712053	Spreadsheet Submitted	01-02-2008
2007,Q3	U 1	6610365	Awaiting EER Certification	11-25-2007
2007,Q3	E 1	6569988	Awaiting EER Certification	10-31-2007
2007,Q4	U 100	6567784	Spreadsheet Created	10-30-2007
2007,Q4	U 2	6566946	Spreadsheet Created	10-30-2007
2007,Q4	U 1	6567549	Spreadsheet Submitted	10-30-2007
2007,Q2	U 1	6358597	Spreadsheet Created	07-24-2007

# AIR Compliance & Enforcement Regional Contact Information:

---



## Northern Regional Office

**Vanessa Day, Manager**

**phone (973) 656-4444**

**fax (973) 656-4080**

(Bergen, Essex, Hunterdon, Hudson, Morris, Passaic, Somerset, Sussex, Union, and Warren counties)

**7 Ridgedale Ave**

**Cedar Knolls, NJ 07927**

## Central Regional Office

**Christopher Odgers, Manager**

**phone (609) 292-3187**

**fax (609) 292-6450**

(Burlington, Mercer, Middlesex, Monmouth, and Ocean counties)

**Mail Code 22-03A**

**PO Box 420**

**Trenton, NJ 08625-0420**

(Standard Mail)

**Mail Code 22-03A**

**401 East State St**

**Trenton, NJ 08625**

(FedEx/UPS)

## Southern Regional Office

**Richelle Wormley, Manager**

**phone (856) 614-3601**

**fax (856) 614-3613**

(Atlantic, Camden, Gloucester, and Salem counties)

**Suite 201**

**One Port Center**

**2 Riverside Drive**

**Camden, NJ 08103**