



Environmental Stewardship Categories

1. Environmental Policy
2. Environmental Management System
3. Annual Environmental Report
4. Carbon Footprint Analysis
5. Environmental Purchasing Policy
6. Vendor/Supply Chain Requirements
7. Mentoring to Other Businesses
8. Outreach Program
9. Green Building Certification
10. Green Building Implementation
11. Life Cycle Assessments
12. Hazardous Materials Reduction
13. Water Use Reduction
- 16. Material Conservation**
17. Employee Trip Reduction
18. Process/Operation Energy Use Reduction
19. Transportation Energy Use Reduction
20. Renewable Energy Use
21. Environmental Enhancement Projects
22. Innovative Program
23. EPA Voluntary Programs



New Jersey Department of Environmental Protection

Bob Martin, Commissioner

Chris Christie, Governor

Kim Guadagno, Lt. Governor

For more information visit:

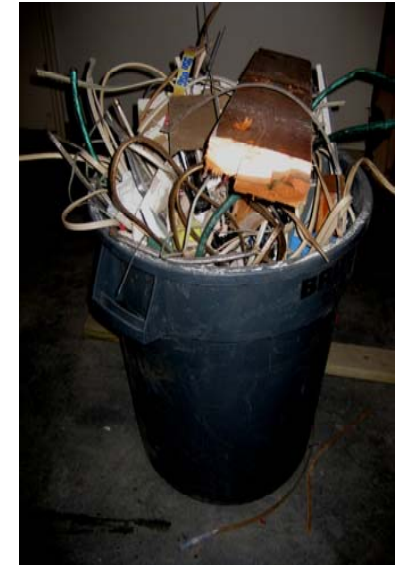
<http://www.stewardship.nj.gov/>

Or Contact:

Janet Smolenski

Janet.Smolenski@dep.state.nj.us

Material Conservation



Part of the **Environmental Stewardship Initiative**: a voluntary program that utilizes existing Department infrastructure and personnel to capture information during routine enforcement inspections and recognize members of the regulated community who are engaging in positive activities that benefit the environment.

Qualifying for Material Conservation Stewardship Recognition

To receive stewardship recognition for **MATERIAL CONSERVATION**, a site must have taken actions to reduce total material usage or disposal. Conservation of materials applies to any production, consumption or disposal practices. This may include raw materials, consumables, packaging and wastes. In order to qualify for recognition, reductions must be production-adjusted and not due to a slow business cycle. All qualifying actions should be measurable and easily supported with bills or production records.



Waste reduction through MATERIAL CONSERVATION

*Site should be able to document type and quantity of materials exchanged/reused/recycled



*Exchanges or one-time events must have occurred within one year



*Process, product or formulation changes from anytime in the past must exceed current common practice

*Recycling must exceed mandatory requirements beyond county plan and municipal ordinance

A **MATERIAL CONSERVATION** initiative should help:

- ⇒ reduce excess material expenditures and needless consumption
- ⇒ decrease air, water and soil contamination caused by the production, transport and decomposition of raw materials
- ⇒ limit waste hauling expenses and land-fill use
- ⇒ utilize market functions to buy, sell or trade wastes with other environmentally conscious businesses

Remember:

1. Durable goods and capital investment “life cycles” will not be considered for recognition.
2. Combustion of waste or recycling into a fuel will not be recognized.
3. Participation in waste exchange or recycling market programs is recommended.
4. New Jersey businesses receive sales tax exemption for the purchase of recycling equipment.
5. Material conservation spurs more efficient process, product or formulation changes.
6. Most operational wastes can be reused.

For more information on **MATERIAL CONSERVATION**, visit:

EPA Waste Exchange Information

<http://www.epa.gov/jtr/comm/exchange.htm>

EPA — NJ Waste Exchanges

<http://www.epa.gov/epawaste/conservation/tools/exchstat.htm#nj>

NJDEP — Recycling in New Jersey

<http://www.state.nj.us/dep/dshw/recycle/>

EPA — Waste Wise Program

<http://www.epa.gov/epawaste/partnerships/wastewise/index.htm>

Association of New Jersey Recyclers

<http://www.anjr.com/>