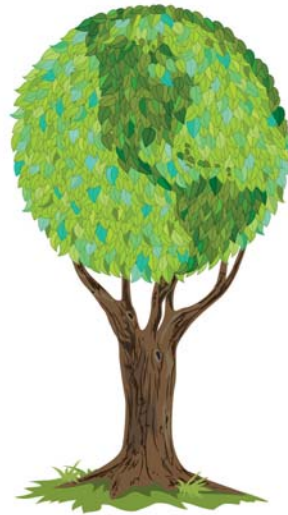




Environmental Stewardship Categories

1. Environmental Policy
2. Environmental Management System
3. Annual Environmental Report
4. Carbon Footprint Analysis
5. Environmental Purchasing Policy
6. Vendor/Supply Chain Requirements
7. Mentoring to Other Businesses
- 8. Outreach Program**
9. Green Building Certification
10. Green Building Implementation
11. Life Cycle Assessments
12. Hazardous Materials Reduction
13. Water Use Reduction
14. Material Conservation
15. Employee Trip Reduction
16. Process/Operation Energy Use Reduction
17. Transportation Energy Use Reduction
18. Renewable Energy Use
19. Environmental Enhancement Projects
20. Innovative Program
21. EPA Voluntary Programs



New Jersey Department of Environmental Protection

Bob Martin, Commissioner

Chris Christie, Governor

Kim Guadagno, Lt. Governor

For more information visit:

<http://www.stewardship.nj.gov/>

Or Contact:

Janet Smolenski

Janet.Smolenski@dep.state.nj.us

Outreach Program



Part of the **Environmental Stewardship Initiative**: a voluntary program that utilizes existing Department infrastructure and personnel to capture information during routine enforcement inspections and recognize members of the regulated community who are engaging in positive activities that benefit the environment.

Qualifying for Outreach Program Stewardship Recognition

To receive stewardship recognition for an **OUTREACH PROGRAM**, a site must have established an outreach program that offers assistance to community leaders, local schools, neighborhood groups etc. that addresses, educates and collaborates on environmental issues within the community. Recognition will be given to businesses where a community outreach program benefits the environment either directly or indirectly.



Community involvement through **OUTREACH PROGRAMS**

*Program must be environmentally educational or beneficial



*Must have occurred within past one year



*Outreach must not be motivated by sales or marketing

*How can business help influence the community to make environmentally sound decisions?

Examples of community **OUTREACH PROGRAMS:**

- ⇒ environmentally focused facility tours for students
- ⇒ community tire collection and recycling
- ⇒ funding a community contest to develop environmental projects and offer business expertise to the winner
- ⇒ sponsor a neighborhood beautification project or clean-up event
- ⇒ provide recycling containers and collection service for local community groups such as little leagues

More ideas...

1. Sponsor a water sampling effort with students and brainstorm on how to remedy area water pollution.
2. Conduct a household waste collection event to educate citizens on proper disposal of paint, automotive fluids, batteries, aerosol cans, etc.
3. Motivate employees to participate in projects sponsored by environmental non-profits or community groups
4. Partner with wildlife groups to construct, stock and maintain a fish rearing pond on accessible land.

For more information on **OUTREACH PROGRAMS**, visit:

Michigan DEQ — Environmental Activity Ideas

<http://www.deq.state.mi.us/documents/deq-ess-nep-envactivities.pdf>

United Nations Environment Programme — Business and Corporate Social Responsibility

<http://www.uneptie.org/scp/business>

Environmental Outreach and Stewardship Alliance

<http://www.eosalliance.org/>