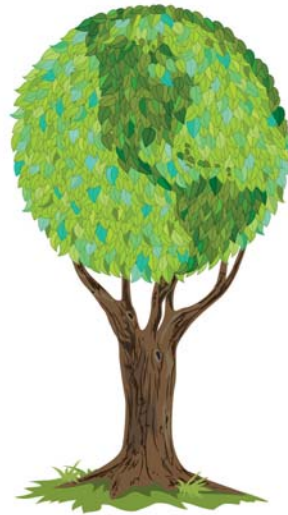




### Environmental Stewardship Categories

1. Environmental Policy
2. Environmental Management System
3. Annual Environmental Report
4. Carbon Footprint Analysis
5. Environmental Purchasing Policy
6. Vendor/Supply Chain Requirements
7. Mentoring to Other Businesses
8. Outreach Program
9. Green Building Certification
10. Green Building Implementation
11. Life Cycle Assessments
12. Hazardous Materials Reduction
13. Water Use Reduction
14. Material Conservation
15. Employee Trip Reduction
16. Process/Operation Energy Use Reduction
17. Transportation Energy Use Reduction
- 18. Renewable Energy Use**
19. Environmental Enhancement Projects
20. Innovative Program
21. EPA Voluntary Programs



### **New Jersey Department of Environmental Protection**

Bob Martin, Commissioner

Chris Christie, Governor

Kim Guadagno, Lt. Governor

**For more information visit:**

<http://www.stewardship.nj.gov/>

**Or Contact:**

Janet Smolenski

Janet.Smolenski@dep.state.nj.us

# Renewable Energy Use



Part of the **Environmental Stewardship Initiative**: a voluntary program that utilizes existing Department infrastructure and personnel to capture information during routine enforcement inspections and recognize members of the regulated community who are engaging in positive activities that benefit the environment.

## Qualifying for Renewable Energy Use Stewardship Recognition

To receive stewardship recognition for **RENEWABLE ENERGY USE**, a site must have installed equipment to generate renewable energy power for on-site operations, such as solar panels, windmills or geothermal technologies. Additionally, facilities that purchase power from a New Jersey Clean Power supplier (currently: Community Energy, Green Mountain Energy, Jersey Atlantic Wind or Sterling Planet) can also receive recognition. Power companies themselves can qualify if they are exceeding renewable energy standards.



## Energy efficiency through **RENEWABLE ENERGY USE**

\*Site should be able to show a clean energy project is current and maintained

\*Project must be completed and fully functional



\*Clean Power purchases should be clearly shown in energy bills

\*There is no time limit on renewable installations



### Conducting **RENEWABLE ENERGY USE** operations will help:

- ⇒ prevent emissions caused by fossil fuel combustion and energy generation
- ⇒ decrease energy expenditures
- ⇒ reduce the cost of complying with future environmental regulations
- ⇒ conserve Earth's valuable resources
- ⇒ reduce nationwide dependence on fossil fuels

### Did you know?

1. Only 7% of US energy comes from renewable sources.
2. A modern wind turbine is designed to run continuously for over 120,000 hours.
3. The blades of a modern wind turbine sweep 48 tons of air per second.
4. The sun provides energy 5,000 times the amount needed by Earth each day.
5. Underground reservoirs of steam and hot water can be used to generate electricity or to directly heat and cool buildings.

For more information on **RENEWABLE ENERGY USE**, visit:

#### **New Jersey's Clean Energy Program**

<http://www.njcep.com/>

#### **New Jersey Renewable Energy Requirement**

[http://www.eere.energy.gov/state\\_energy\\_program/news\\_detail.cfm?news\\_id=9922](http://www.eere.energy.gov/state_energy_program/news_detail.cfm?news_id=9922)

#### **New Jersey Board of Public Utilities**

<http://www.bpu.state.nj.us/>

#### **Database of State Incentives for Renewables & Efficiency**

<http://www.dsireusa.org/>