

# Deer Management Zone

## BOUNDARY DESCRIPTIONS



**Note: Shaded zones represent a change for this year.**

**Zone No. 1:** That portion of Sussex County lying within a continuous line beginning at the intersection of Rt. 521 (River Rd.) and Mashipacong Rd.; then west along the northern boundary of the Delaware Water Gap National Recreation Area to the east bank of the Delaware River; then north along the east bank of the Delaware River to the New York State line; then east along the New York State line to Rt. 519; then south along Rt. 519 to its intersection with Rt. 206 at Branchville; then northwest along Rt. 206 to the intersection with Rt. 633; then south along Rt. 633 to its intersection with Rt. 521; then northwest along Rt. 521 to its intersection with Rt. 560; then west along Rt. 560 to the intersection with Ridge Rd.; then north on Ridge Rd. to the intersection with Rt. 646; then east on Rt. 646 to the intersection with Rt. 645 in Hainesville; then north on Rt. 645 to the intersection with Rts. 206 and 521; then north on Rts. 206 and 521 to Montague; then north on Rt. 521 (River Rd.) to the intersection with Mashipacong Rd., the point of beginning. The island of Mashipacong lying in the Delaware River is included in this zone. High Point State Park (Zone 67) is excluded from Zone 1.

**Zone No. 2:** That portion of Sussex County lying within a continuous line beginning at the intersection of Rt. 94 and the New York State line; then south along Rt. 94 to its intersection with Rt. 23 at Hamburg, then southeast along Rt. 23 to its intersection with Rt. 517 at Franklin; then south along Rt. 517 to its intersection with Rt. 206 at Andover; then north along Rt. 206 to its intersection with Rt. 519 at Newton; then north along Rt. 519 to the New York State line; then east along the New York State line to Rt. 94 to the point of beginning.

**Zone No. 3:** That portion of Sussex, Morris, Passaic, and Bergen counties lying within a continuous line beginning at the intersection of Rt. 94 and the New York State line; then east along the New York State line to its intersection with Rt. 202 near Suffern; then south along Rt. 202 to its intersection with Rt. 287 in Oakland; then south on Rt. 287 to its intersection with Rt. 23 in Riverdale; then west along Rt. 23 to its intersection with Rt. 94 at Hamburg; then north along Rt. 94 to the point of beginning on the New York State line.

**Zone No. 4:** That portion of Sussex and Warren counties lying within a continuous line beginning at the intersection of Rt. 521 (River Rd.) and New Mashipacong Rd.; then running along Rt. 521 to the intersection with Rt. 206 in Montague; then south on Rt. 206 to the intersection with Rt. 645 (Layton-Hainesville Road); then south on Rt. 645 to the intersection with Rt. 646 in Hainesville (Jagger Road); then west on Rt. 646 to the intersection with Ridge Rd.; then south on Ridge Rd. to the intersection with Rt. 560 (Dingman's Bridge Road); then southeast along Rt. 560 to its intersection with Rt. 206; then south on Rt. 206 to its intersection with Rt. 521; then west along Rt. 521 to its intersection with Beavans Rd at the Hampton Twp. – Frankford Twp. border; then northwest along Beavans Rd to its intersection with the base of the Kittatinny Ridge then southwest along the east base of the Kittatinny Ridge to the Delaware River at the Delaware Water Gap north and west of Quarry Road; then north along the east bank of the Delaware River to the northern park boundary of the Delaware Water Gap National Recreation Area; then east along the northern park boundary of the Delaware Water Gap National Recreation Area to Rt. 521 (River Rd.), the point of beginning. Namanock, Minisink, Depew, Tocks, Poxono and Labar Islands in the Delaware River are included in this zone.

**Zone No. 5:** - See [www.njfishandwildlife.com/dmzcorrection05.htm](http://www.njfishandwildlife.com/dmzcorrection05.htm) for zone description.

**Zone No. 6:** That portion of Morris, Sussex, Passaic, Warren and Essex counties lying within a continuous line beginning at the intersection of Rt. 80 and Rt. 517 at Allamuchy; then northeast along Rt. 517 to its intersection with Rt. 23 at Franklin; then southeast along Rt. 23 to its intersection with Rt. 618; then south along Rt. 618 to its intersection with Rockaway Valley Rd.; then southwest along Rockaway Valley Rd. to its intersection with Diamond Spring Rd.; then south along Diamond Spring Rd. with West Main St. in Denville; then south along West Main St. to its intersection with Rt. 80; then west along Rt. 80 to the point of beginning at Allamuchy. Picatinny Arsenal (Zone 54) is excluded from Zone 6.

**Zone No. 7:** That portion of Hunterdon and Warren counties lying within a continuous line beginning at the intersection of Rts. 31 and 78 at Clinton; then north along Rt. 31 to its intersection with Rt. 46 at Buttzville; then west on Rt. 46 to the Delaware River at Manunkachunk; then south along the east bank of the Delaware to its intersection with Rt. 78 at Phillipsburg; then east along Rt. 78 to the point of beginning at Clinton.

**Zone No. 8:** That portion of Hunterdon, Morris, Somerset and Warren counties lying within a continuous line beginning at the intersection of Rts. 22 and 206 near Somerville; then north along Rt. 206 to its intersection with Rt. 80 near Netcong; then west along Rt. 80 to its intersection with Rt. 517 at Allamuchy; then south along Rt. 517 to its intersection with Rt. 46 at Hackettstown; then west along Rt. 46 to its intersection with Rt. 31 at



## Be Sure of Your Target and Beyond

*Be aware of all SAFETY ZONES.*

VIOLATION	FIRST OFFENSE	REPEAT OFFENSES
Deer Permit Violations (Hunting without permit, wrong season, wrong zone, permit transfer)	Up to \$300	Up to \$500 Loss of License
Hunting within 450 ft. of a school playground or building	Up to \$300	\$1,500; Permanent Loss of License
Injury to another person	Up to \$2,000 Loss of License	Up to \$4,000; Permanent Loss of License
Damage to crops or other property	Up to \$2,000 + Restitution for damages Loss of License	Up to \$2,000 + Restitution for damages Permanent Loss of License
Careless use of weapon (shooting into safety zone, handling weapon in unsafe manner)	Up to \$500 Loss of License	Up to \$500 Loss of License
Trespass	Up to \$200	Up to \$500 Loss of License

# Deer Management Zone

## BOUNDARY DESCRIPTIONS

(continued from page 37)

Buttzeville; then southeast along Rt. 31 to its intersection with Rt. 22 at Clinton; then east along Rt. 22 to the point of beginning at Somerville.

**Zone No. 9:** Those portions of Morris and Somerset counties lying within a continuous line beginning at the intersection of Rt. 206 and Rt. 80 near Netcong; then east along Rt. 80 to its intersection with Rt. 46; then east on Rt. 46 to the intersection with Rt. 10 in Ledgewood; then east on Rt. 10 to the intersection with Morris Tpk.; then east and south on Morris Tpk. to Calais Rd.; then west on Calais Rd. to Combs Hollow Rd.; then south on Combs Hollow Rd. to Calais Rd.; then south on Calais Rd. to Mountain Ave. in Mendham; then south and east on Mountain Ave. to Hilltop Rd. (Rt. 525); then south on Rt. 525 to the intersection with Rt. 78; then west on Rt. 78 to the intersection with Rt. 206 near Pluckemin; then north on Rt. 206 to the intersection with Rt. 80 in Netcong, the point of beginning.

**Zone No. 10:** That portion of Hunterdon and Warren counties lying within a continuous line beginning at the intersection of Rts. 31 and 12 in Flemington; then north along Rt. 31 to its intersection with Rt. 78 at Clinton; then west along Rt. 78 to the Delaware River at Phillipsburg; then south along the east bank of the Delaware River to Rt. 12 at Frenchtown; then east along Rt. 12 to the point of beginning at Flemington.

**Zone No. 11:** That portion of Hunterdon County lying within a continuous line beginning at the intersection of Routes 12 and 31 and 202 at Flemington; then southwest along Route 202 to the Delaware River; then northwest along the east bank of the Delaware River to its intersection with Route 12 at Frenchtown; then east along Route 12 to the point of beginning at Flemington. Shyhawks, Treasure, Rush, Bull and Eagle Islands lying in the Delaware River are in this zone.

**Zone No. 12:** That portion of Somerset, Hunterdon and Mercer counties lying within a continuous line beginning at the intersection of Rts. 31 and 22 at Clinton; then east on Rt. 22 to its intersection with Rt. 206 at Somerville; then south along Rt. 206 to its intersection with Rt. 546 at Lawrenceville; then west on Rt. 546 to its intersection with Rt. 31 at the Pennington traffic circle; then north along Rt. 31 to the point of beginning at Clinton. That portion of Round Valley Recreation Area designated as open to deer hunting is included in Zone 12.

**Zone No. 13:** That portion of Morris, Somerset and Union counties lying within a continuous line beginning at the intersection of Rts. 22 and 206 at Somerville; then north on Rt. 206 to the intersection with Rt. 78 near Pluckemin; then east on Rt. 78 to the intersection with Rt. 525; then north on Rt. 525 to Mountain Ave. in Mendham; then north and west on Mountain Ave. to Calais Rd.; then north on Calais Rd. to Combs Hollow Rd., then north on Combs Hollow Rd. to Calais Rd.; then east on Calais Rd. to Morris Tpk.; then north and west on Morris Tpk. to Rt. 10; then west on Rt. 10 to Rt. 46 in Ledgewood; then west on Rt. 46 to the intersection with Rt. 80 near Netcong; then east on Rt. 80 to the intersection with Rt. 511; then south on Rt. 511 to the intersection with Rt. 124 in Morristown; then southeast along Rt. 124 to the intersection with Rt. 82; then southwest along Rt. 82 to the intersection with Rt. 22; then southwest along Rt. 22 to the point of beginning at Somerville. The Great Swamp National Wildlife Refuge (Zone 38) is excluded from Zone 13.

**Zone No. 14:** That portion of Mercer, Middlesex, Somerset and Burlington counties lying within a continuous line beginning at the intersection of Routes 22 and 206 at Somerville, then east along Route 22 to its intersection with Interstate 287; then south on Interstate 287 to its intersection with Route 18; then south on Route 18 to its intersection with the New Jersey Turnpike; then southwest along the New Jersey Turnpike to its intersection with Rt. 545; then northwest on Route 545 which becomes Farnsworth Avenue; then continuing northwest on Farnsworth Ave. to its intersection with W. Burlington Street; then southwest on W. Burlington St. to its intersection with Interstate 295; then north on Interstate 295 to its intersection with the Delaware River at Bordentown; then northwest along the east bank of the Delaware River to Route 546 at Washington's Crossing; then east on Route 546 to its intersection with Route 206 at Lawrenceville; then north along Route 206 to the point beginning at Somerville. Rotary and Blauguard Islands lying in the Delaware River are in this zone.

**Zone No. 15:** That portion of Monmouth, Mercer and Middlesex counties lying within a continuous line beginning at the intersection of the New Jersey Turnpike and Rt. 522 near Jamesburg; then south on the Turnpike to its intersection with Interstate 195, then east on Rt. I-195 to its intersection with Rt. 537 near Holmeson; then northeast on Rt. 537 to its intersection with Rt. 522 in Freehold; then northwest on Rt. 522 to its intersection with the New Jersey Turnpike, the point of beginning. Monmouth Battlefield State Park is excluded from this zone.

**Zone No. 16:** That portion of Monmouth and Ocean counties lying within a continuous line beginning at the intersection of Rt. 537 and Rt. 571 near Holmeson; then southeast on Rt. 571 to the intersection with Rt. 547; then northeast on Rt. 547 through Farmingdale to the intersection with Tinton Falls Rd.; then north on Tinton Falls Rd. to the intersection with Rt. 33 and Rt. 34; then north on Rt. 34 to the intersection with the fenced boundary of the Earle Naval Weapons Depot property; then westward along the fenced border of the Earle Depot to the intersection with Rt. 33; then west along Rt. 33 to the intersection with Rt. 537 in Freehold; then southwest on Rt. 537 to the intersection with Rt. 571 near Holmeson, the point of beginning.

**Zone No. 17:** That portion of Mercer, Monmouth, Burlington and Ocean counties lying within a continuous line beginning at the intersection of the New Jersey Turnpike and Interstate 195; then east along Interstate 195 to the intersection with Rt. 537 near Holmeson; then southwest along Rt. 537 to the intersection with Hawkin Road (Prosperptown-Colliers Mills Road: Rt. 640)



## How Far Can Your Firearm Shoot?

*12 gauge maximum distances for shot sizes:*

No. 6	708 feet or 236 yards
No. 0	1,845 feet or 615 yards
No. 00	1,895 feet or 632 yards
Slug, 1 oz	3,780 feet or 1,260 yards

### SPORTING ARMS AND AMMUNITION MANUFACTURERS' INSTITUTE, INC.

Safety Series,  
1075 Post Road, Riverside, CT 06878

\* Distances above are with barrel held at an elevated angle for maximum trajectory. Always consider the angle of your barrel when shooting.  
\* Never shoot at or over the crest of a hill.  
\* All distances are approximate and can vary depending on the shotgun's gauge/choke and ammunition used.

then southeast along Hawkin Road (Prospertown-Colliers Mills Road: Rt. 640; to the intersection with Colliers Mills Road; then west along Colliers Mills Road to its intersection with Woodruff Rd.; then southwest along Woodruff Rd. to the intersection with Rt. 539; then southeast along Rt. 539 to the border of Fort Dix Military Reservation; then westward along the Fort Dix Military Reservation boundary to Rt. 545 near Wrightstown; then northwest along Rt. 545 to the intersection with the New Jersey Turnpike; then northeast along the New Jersey Turnpike to its intersection Interstate 195 the point of beginning.

**Zone No. 18:** That portion of Ocean County lying within a continuous line beginning at the intersection of Rt. 530 and the Garden State Parkway at South Toms River; then west along Rt. 530 to the intersection with Rt. 70; then west along Rt. 70 to the border of Fort Dix Military Reservation; then northward along the Fort Dix Military Reservation boundary to the northernmost intersection of the Fort Dix Military Reservation border and Rt. 539; then northwest along Rt. 539 to the intersection with Woodruff Rd.; then northeast along Woodruff Rd. to the intersection with Colliers Mills Road; then east along Colliers Mills Road to the intersection with Hawkin Road (Prospertown-Colliers Mills Road: Rt. 640); then northwest along Hawkin Road (Prospertown-Colliers Mills Road: Rt. 640) to the intersection with Rt. 537 near Prospertown; then northeast along Rt. 537 to the intersection with Rt. 571 near Holmeson; then southeast along Rt. 571 to the Garden State Parkway; then south along the Garden State Parkway to the point of beginning near South Toms River.

**Zone No. 19:** That portion of Burlington and Camden counties lying within a continuous line beginning at the intersection of Rt. 530 and Rt. 646 (New Lisbon-Four Mile Rd); then southeast on Rt. 646 to its intersection with Turkey Buzzard Bridge Road; then west on Turkey Buzzard Bridge Rd. to its intersection with Rt. 644 (Buddtown-Ong's Hat Road); then southeast on Rt. 644 to its intersection with Rt. 70 at Four Mile Circle; then west on Rt. 70 to its intersection with Burr's Mill Road; then southwest on Burr's Mill Rd. to its intersection with Avenue Road; then south on Avenue Rd. to its intersection with Sooy Place Road; then south on Sooy Place Rd. to its intersection with Irick's Causeway; then southwest on Irick's Causeway to its intersection with Rt. 532 (Chatsworth Road); then south and southeast on Rt. 532 to its intersection with South Park Rd.; then south on South Park Rd. to its intersection with White Horse-Speedwell Rd.; then south on White Horse-Speedwell Rd. to its intersection with Eagle Rd.; then southwest on Eagle Rd. to its intersection with the railroad tracks; then west following the railroad tracks to their intersection with Carranza Rd.; then northwest on Carranza Rd. to its intersection with Tuckerton Rd.; then north and northwest on Tuckerton Rd. to its intersection with Forked Neck Rd. (Dingletown Rd.); then west along Forked Neck Road to its intersection with Rt. 206; then south along Rt. 206 to its intersection with Rt. 541, Stokes Road; then northwest along Rt. 541 to its intersection with Willow Grove Road; then southwest on Willow Grove Road to its intersection with Atsion Road; then northwest on Atsion Road to its intersection with Rt. 534, Jackson Road; then west along Rt. 534 to its intersection with Rt. 73; then north along Rt. 73 to its intersection with the New Jersey Turnpike; then northeast along the New Jersey Turnpike to its intersection with Rt. 38; then east along Rt. 38 to its intersection with Rt. 530; then east along Rt. 530 to its intersection with Rt. 616 (Vincentown-Pemberton Road); then northeast on Rt. 616, Hanover Street, into the town of Pemberton to its intersection with Elizabeth Street, then east on Elizabeth Street, which becomes Pemberton-Browns Mills Road (Rt. 687) to its intersection with Rt. 530 (Pemberton-By-Pass Road); then east on Rt. 530 to its intersection with Rt. 646 (New Lisbon-Four Mile Road), the point of beginning. Fort Dix Military Reservation (Zone 37) is excluded from Zone 19.

**Zone No. 20:** Not designated.

**Zone No. 21:** That portion of Ocean and Burlington counties lying within a continuous line beginning at the intersection of Rt. 530 and the Garden State Parkway near South Toms River; then south along the Parkway to its intersection with Rt. 72; then northwest along Rt. 72 to its intersection with Rt. 644 (Buddtown-Ong's Hat Road) at Four Mile Circle; then northwest on Rt. 644 to

its intersection with Turkey Buzzard Bridge Road; then northeast on Turkey Buzzard Bridge Rd. to its intersection with Rt. 646 (New Lisbon-Four Mile Road); then northwest on Rt. 646 to its intersection with Rt. 530 (Pemberton-Browns Mills Road); then east along the southern border of Fort Dix Military Reservation to its intersection with Rt. 70; then east on Rt. 70 to its intersection with Rt. 539 and Rt. 530 near Whiting; then east along Rt. 530 to its intersection with the Garden State Parkway near South Toms River, the point of beginning. Fort Dix Military Reservation (Zone 37) is excluded from Zone 21.

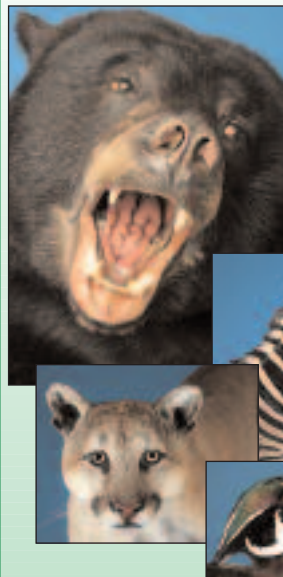
**Zone No. 22:** That portion of Ocean and Burlington counties lying within a continuous line beginning at the intersection of the Garden State Parkway and Rt. 72 near Manahawkin; then south along the Garden State Parkway to its intersection with Stage Road; then west along Stage Road to its intersection with Leektown Road; then west along Leektown Road (which turns into Rt., 653 to its intersection with the Wading River; then south along the east bank of the Wading River to its intersection with the Mullica River and the Atlantic-Burlington County line; then east along the Atlantic-Burlington County line to the Atlantic Ocean, then east to the Atlantic Ocean; then north along the Atlantic Ocean to Rt. 72 at Ship Bottom; then west along Rt. 72 to the Garden State Parkway, the point of beginning. The Edwin B. Forsythe National Wildlife Refuge (Zone 58) is excluded from Zone 22.

**Zone No. 23:** That portion of Burlington, Atlantic and Camden counties lying within a continuous line beginning at the intersection of Rt. 563 and the Mullica River at the Atlantic-Burlington County line near Green Bank; then north and west along the north bank of the Mullica River to its intersection with Rt. 542 at Pleasant Mills; then west along Rt. 542 to its intersection with Nescochague Creek; then northwest along Nescochague Creek to Great Swamp Branch; then westward along Great Swamp Branch to its intersection

### WILDLIFE PRESERVATIONS

T A X I D E R M Y

*Trusted by Major Museums Throughout The Country.*



ARTISTIC composition & design

EXCEPTIONAL accuracy & detail

CUSTOM sculpture and materials,  
unavailable to commercial studios

PICKUP & DELIVERY available

FULL MUSEUM SERVICES,  
now available to the public

NJ'S ONLY  
NATIONAL AWARD OF  
EXCELLENCE WINNER.

NJ'S ONLY NTA  
CERTIFIED JUDGE.

NJ'S ONLY STUDIO OF  
ARTISANS accredited with  
over 400 awards from regional  
to world competitions.

*"We've mastered the unique, and specialize in the impossible!"*

**George A. Dante, Jr.**

**Totowa & Toms River, NJ • Phone: 973-790-1515**

# Deer Management Zone

## BOUNDARY DESCRIPTIONS

(continued from page 39)

with Rt. 206 (just south of the intersection of Rt. 206 and Middle Road); then north along Rt. 206 to its intersection with Albertson Brook (about 4 miles north of Hammonton); then westward along Albertson Brook until it becomes Blue Anchor Brook; then westward along Blue Anchor Brook to its intersection with Rt. 30, near Cedar Ave., south of Ancora; then northwest along Rt. 30 to its intersection with Rt. 73; then north on Rt. 73 to its intersection with Rt. 534, Jackson Road; then east along Rt. 534 to its intersection with Atsion Road; then southeast on Atsion Road to its intersection with Willow Grove Road; then northeast on Willow Grove Road to its intersection with Rt. 541, Stokes Road; then southeast along Rt. 541 to its intersection with Rt. 206; then north along Rt. 206 to its intersection with Forked Neck Road; then east along Forked Neck Road (Dingletown Rd.) to its intersection with Tuckerton Rd.; then southeast and south on Tuckerton Rd. to its intersection with Carranza Rd., then southeast on Carranza Rd. to its intersection with the railroad tracks; then east following the railroad tracks to their intersection with Eagle Rd.; then northeast on Eagle Rd. to its intersection with White Horse—Speedwell Rd.; then north on White Horse—Speedwell Rd. to their intersection with South Park Rd.; then north on South Park Rd. to its intersection with Rt. 532 (Chatsworth Rd.); then northwest on Rt. 532 to its intersection with Irick's Causeway; then northeast on Irick's Causeway to its intersection with Sooy Place Road (Vincentown-South Park Road); then north on Sooy Place Rd. to its intersection with Avenue Road; then northeast on Avenue Rd. to its intersection with Burr's Mill Road; then northeast on Burr's Mill Rd. to its intersection with Rt. 70; then east on Rt. 70 to its intersection with Rt. 72 at Four Mile Circle; then southeast on Rt. 72 to its intersection with Rt. 563; then southwest along Rt. 563 to its intersection with the Mullica River at the Atlantic-Burlington County line, the point of beginning near Green Bank.

**Zone No. 24:** That portion of Burlington and Ocean counties lying within a continuous line beginning at the intersection of Rt. 563 and Rt. 72; then southeast along Rt. 72 to its intersection with the Garden State Parkway; then south along the Parkway to its intersection with Stage Road; then west along Stage Road to its intersection with Leektown Road; then west along Leektown Road (which turns into Rt. 653) to its intersection with the Wading River; then south along the east bank of the Wading River to its intersection with the Mullica River and the Atlantic-Burlington County line; then west along the north bank of the Mullica River to its intersection with Rt. 563 near Green Bank; then north along Rt. 563 to its intersection with Rt. 72, the point of beginning.

**Zone No. 25:** That portion of Salem, Gloucester, Atlantic and Camden counties lying within a continuous line beginning at the intersection of Rt. 54 and Rt. 40 near Buena; then west on Rt. 40 to its intersection with Rt. 553; then north on Rt. 553 to its intersection with Rt. 610 (Aura Road); then southeast on Rt. 610 to its intersection with Rt. 655 (Fries Mill Road then north on Rt. 655 to its intersection with Rt. 322; then west on Rt. 322 to its intersection with Rt. 47 at Glassboro; then north on Rt. 47 to its intersection with County Road 635 (Hurville-Grenloch Road); then eastward on County Road 635 to its intersection with County Road 705 (County House Road); then southeast along Rt. 705 to its intersection with County Road 688 (Turnerville-Hickstown Road); then eastward along County Road 688 to its intersection with County Road 689 (Berlin-Crosskeys Road); then northeast along County Road 689 to its intersection with Rt. 73 at Berlin; then south on Rt. 73 to its intersection with Rt. 30; then southeast along Rt. 30 to its intersection with Blue Anchor Brook, just past Cedar Avenue, south of Ancora; then eastward along Blue Anchor Brook until it becomes Albertson Brook at Fleming Pike; then eastward along Albertson Brook to its intersection with Rt. 206 (about four miles north of Hammonton); then south on Rt. 206 to its intersection with Great Swamp Branch (just past the intersection of Rt. 206 and Middle Road); then eastward along Great Swamp Branch to its intersection with Nescochaque Creek; then eastward along Nescochaque Creek to Nescochaque Lake, at Pleasant Mills; then westward along the north and western shore of Nescochaque Lake to its intersection with Hammonton Creek; then westward along Hammonton Creek to its intersection with Rt. 30 (White Horse Pike), near Hammonton; then southeast on Rt. 30 to its intersection with Weymouth

Road (Rts. 640-559); then southward on Weymouth Rd. to its intersection with the Atlantic City Expressway; then west along the Atlantic City Expressway to its intersection with Eighth Street; then south along Eighth Street to its intersection with Rt. 322; then westward on Rt. 322 to its intersection with Rt. 54; then southward on Rt. 54 to its intersection with Rt. 40 near Buena, the point of beginning. Zone 65 is excluded from Zone 25.

**Zone No. 26:** That portion of Atlantic County lying within a continuous line beginning at the intersection of Rts. 40 and 54 near Buena; then southeast on Rt. 40 to its intersection with Rt. 50; then north on Rt. 50 to its intersection with Rt. 322; then east on Rt. 322 to its intersection with Cologne Avenue; then north on Cologne Avenue to its intersection with Duerer Street; then east on Duerer Street to its intersection with Rt. 575; then northeast on Rt. 575 to its intersection with the Garden State Parkway; then north along the Garden State Parkway to its intersection with the Mullica River and the Atlantic-Burlington County line; then northwest along the south bank of the Mullica River to its intersection with Rt. 542 at Pleasant Mills; then west on Rt. 542 to its intersection with Nescochaque Creek at Pleasant Mills; then south along the west bank of Nescochaque Creek to Nescochaque Lake; then southwest along the western bank of Nescochaque Lake to its intersection with Hammonton Creek; then westward along Hammonton Creek to its intersection with Rt. 30 (White Horse Pike), near Hammonton; then south on Rt. 30 to its intersection with Weymouth Road (Rts. 640-559); then south on Weymouth Road to its intersection with the Atlantic City Expressway; then northwest along the Atlantic City Expressway to its intersection with Eighth Street; then southwest along Eighth Street to its intersection with Rt. 322 (Black Horse Pike); then northwest along Rt. 322 to its intersection with Rt. 54; then southwest along Rt. 54 to its intersection with Rt. 40 at Buena, the point of beginning. The Atlantic County Park System (Zone 61) is excluded from Zone 26.

**Zone No. 27:** That portion of Cumberland and Salem counties lying within a continuous line beginning at the intersection of Rts. 77 and 40 at Pole Tavern; then northwest on Rt. 40 to its intersection with Rt. 48; then west on Rt. 48 through Penns Grove to the Delaware River; then south along the east bank of the Delaware River to its intersection with the Salem Canal at Deepwater; then eastward along the south bank of the Salem Canal to its intersection with the Salem River; then southward along the west bank of the Salem River to its intersection with Rt. 49 at Salem; then southeast on Rt. 49 to its intersection with Salem County Rt. 667 (Pecks Corner-Cohansey Rd.) at Pecks Corner; then eastward along Rt. 667 to its intersection with Rt. 540; then east along Rt. 540 to its intersection with Rt. 77; then north on Rt. 77 to its intersection with Rt. 40 at Pole Tavern, the point of beginning.

**Zone No. 28:** That portion of Gloucester, Cumberland and Salem counties lying within a continuous line beginning at the intersection of Rts. 77 and 40 at Pole Tavern; then east on Rt. 40 to its intersection of Rt. 47 at Malaga; then south on Rt. 47 to its intersection of Rt. 49 in Millville; then west on Rt. 49 to its intersection with Salem County Rt. 667 (Pecks Corner-Cohansey Road) at Pecks Corner; then eastward along Rt. 667 to its intersection with Rt. 540; then east on Rt. 540 to its intersection with Rt. 77; then north on Rt. 77 to Pole Tavern, the point of beginning.

**Zone No. 29:** That portion of Salem and Cumberland counties lying within a continuous line beginning with the intersection of Rts. 77 and 49 at Bridgeton; then northwest on Rt. 49 to its intersection with Alloway Creek at Quinton; then southwest along the northern bank of the Alloway Creek to its intersection with the Delaware River; then south along the east bank of the Delaware River to the Cohansey River; then along the northwest bank of the Cohansey River to Bridgeton, the point of beginning.

**Zone No. 30:** That portion of Cumberland County lying within a continuous line beginning at Fairton on the Cohansey River; then west along the south bank of the Cohansey River to the Delaware River; then southeast along the east bank of the Delaware River to the Maurice River; then north along the west bank of the Maurice River to Haleyville-Mauricetown Road (County Road 676); then west on Haleyville-Mauricetown Road to its intersection with

the Central Railroad of New Jersey (C.R.R.N.J.); then west along the C.R.R.N.J. line to its intersection with Newport-Centre Grove Road (County Road 629); then southwest on Newport-Centre Grove Road to its intersection with Rt. 553, then northwest on Rt. 553 to Fairton, the point of beginning.

**Zone No. 31:** That portion of Cumberland County lying within a continuous line beginning at the intersections of Routes 77 and 49 at Bridgeton; then east on Rt. 49 to the Maurice River near Millville; then south along the west bank of the Maurice River near Millville; then south along the west bank of the Maurice River to Buckshutem Creek; then west on the north bank of Buckshutem Creek to its intersection with Buckshutem Road (County Road 670); then northwest on Buckshutem Road to its intersection with Cedarville Road (County Road 610); then southwest on Cedarville Road to its intersection with Newport Centre Grove Road (County Road 629); then southwest on Newport Centre Grove Road to its intersection with Rt. 553; then northwest along Rt. 553 to the Cohansey River at Fairton; then north on the east bank of the Cohansey River to Bridgeton, the point of beginning.

**Zone No. 32:** Not designated.

**Zone No. 33:** Not designated.

**Zone No. 34:** That portion of Cumberland and Cape May counties lying within a continuous line beginning at the intersection of Rt. 47 and Rt. 548 in Port Elizabeth; then east on Rt. 548 to its intersection with Rt. 49; then northwest on Rt. 49 to its intersection with the Tuckahoe River at Head of River; then eastward along the south bank of the Tuckahoe River and Atlantic-Cape May County line to Great Egg Harbor Bay; then continuing eastward along the Atlantic-Cape May County line to the Atlantic Ocean at the Great Egg Harbor Inlet; then southeast along the Atlantic Ocean to Delaware Bay; then north and west along the east bank of Delaware Bay to the Maurice River; then north along the east bank of the Maurice River to Port Elizabeth and Rt. 548, the point of beginning.

**Zone No. 35:** That portion of Salem and Gloucester counties lying within a continuous line beginning at the east bank of the Delaware River at Penns Grove; then southeast on Rt. 48 to its intersection with Rt. 40; then southeast on Rt. 40 to its intersection with Rt. 553; then north on Rt. 553 to the intersection with Rt. 610 (Aura Road); then southeast on Rt. 610 to its intersection with Rt. 47 at Clayton; then north on Rt. 47 to its intersection with county Rt. 635 (Lambs Rd.) at Glassboro; then west on Rt. 635 to its intersection with Mantua Creek at Glassboro; then northwest along the Mantua Creek to the Delaware River; then southwest along the east bank of the Delaware River, to Penns Grove, the point of beginning. Chester and Mond's Islands lying in the Delaware River are in this zone.

**Zone No. 36:** That portion of Bergen, Hudson, Essex, Passaic, Morris, Union, Somerset and Middlesex Counties lying within a continuous line beginning at the intersection of Rt. 202 and the New York State line near Suffern; then south on Rt. 202 to its intersection with Rt. 287 in Oakland; then south along Rt. 287 to its intersection with Rt. 23; then rt. 23 northwest to its intersection with Rt. 618; then south along Rt. 618 to its intersection with Rockaway Valley Rd.; then southwest along Rockaway Valley Rd. to its intersection with Diamond Spring Rd.; then south along Diamond Spring Rd. with West Main St. in Denville; then south along West Main St. to its intersection with Rt. 80; then east on Rt. 80 to its intersection with Rt. 511; then south on Rt. 511 to its intersection with Rt. 510; then west on Rt. 510 to its intersection with Rt. 124 at Morristown; then southeast on Rt. 124 to its intersection with Rt. 82; then southeast along Rt. 82 to its intersection with Rt. 22; then southwest on Rt. 22 to its intersection with Rt. 287 near Somerville; then southeast on Rt. 287 to its intersection with Rt. 18 near South Bound Brook; then southeast on Rt. 18 to its intersection with the New Jersey Turnpike; then north on the Turnpike to its intersection with the Raritan River; then east along the north bank of the Raritan River to Raritan Bay and the New York State line; then north along the New York State line to Arthur Kill and west bank of the Hudson River; then west along the New Jersey-New York border to the point of beginning near Suffern.

**Zone No. 37:** That portion of Fort Dix Military Reservation, U.S. Dept. of the Army, designated as open for deer hunting, lying within Burlington and Ocean counties.

**Zone No. 38:** That portion of Great Swamp National Wildlife Refuge, U.S. Dept. of the Interior, designated as open for deer hunting, lying within Morris County.

**Zone No. 39:** That portion of Naval Weapons Station Earle, U.S. Department of the Navy designated as open for deer hunting, lying within Monmouth County.

**Zone No. 40:** That portion of Naval Weapons Station Earle, Waterfront Section, U.S. Department of the Navy, designated as open for deer hunting, lying within Monmouth County.

**Zone No. 41:** That portion of Hunterdon and Mercer counties lying within a continuous line beginning at the intersection of Rt. 31 and Rt. 202 at Ringoes; then south along Rt. 31 to its intersection with Rt. 546 at the Pennington traffic circle; then west along Rt. 546 to the Delaware River; then north along east bank of Delaware River to its intersection with Rt. 202; then north along Rt. 202 to the point beginning at Ringoes.

**Zone No. 42:** That portion of Atlantic County lying within a continuous line beginning at the intersection of the south bank of the Mullica River and the Garden State Parkway; then south along the Garden State Parkway to its intersection with Rt. 575; then southwest along Rt. 575 to its intersection with Duerer Street; then west on Duerer Street to its intersection with Cologne Avenue; then south on Cologne Avenue to its intersection with Rt. 322; then west on Rt. 322 to its intersection with Rt. 50; then south on Rt. 50 to its intersection with the Great Egg Harbor River at Mays Landing; then south along the east bank of the Great Egg Harbor River to the Atlantic-Cape May County line in Great Egg Harbor Bay; then eastward along the Atlantic-Cape May County line to its intersection with the Atlantic Ocean at the Great Egg Harbor Inlet; then northeast along the Atlantic Ocean to Great Bay; then west along the south shore of Great Bay to the confluence of the Mullica River; then west along the south bank of the Mullica River to its intersection with the Garden State Parkway, the point of beginning. The Edwin B. Forsythe National Wildlife Refuge (Zones 56 and 57), the Atlantic County Park System (Zone 61) and the lands (excluding Laurel Memorial Park Cemetery), roads, right of ways and easements within the contiguous boundary of the Federal Aviation Administration William J. Hughes Technical Center (Zone 66) are excluded from Zone 42.

**Zone No. 43:** That portion of Cumberland County lying within a continuous line beginning at the intersection of Buckshutem Road (County Road 670) and Cedarville Road (County Road 610); then southwest on Cedarville Road to its intersection with Newport Centre Grove Road (County Road 629); then southwest on Newport Centre Grove Road to its intersection with the Central Railroad of New Jersey (C.R.R.N.J.); then east on the C.R.R.N.J. line to its intersection with Haleyville Road (County Road 676) at Mauricetown Station; then east on Haleyville Road to its intersection with the Maurice River at Mauricetown; then north along the west bank of the Maurice River to the north bank of Buckshutem Creek at Laurel Lake; then west along the north bank of Buckshutem Creek to Buckshutem Road; then northwest on Buckshutem Road to its intersection with Cedarville Road, the point of beginning.

**Zone No. 44:** Not designated.

**Zone No. 45:** That portion of Cumberland, Atlantic and Cape May counties lying within a continuous line beginning at the intersection of Broad Street (Rt. 552 spur) and Delsea Drive (Rt. 47); then northeast along Rt. 552 spur to Rt. 552; then continuing northeast along Rt. 552 to its intersection with the Tuckahoe River at Milmay; then south along the west bank of the Tuckahoe River to its intersection with Rt. 49 at Hunter's Mill; then southeast on Rt. 49 to its intersection with Rt. 548; then west on Rt. 548 to its intersection with Delsea Drive (Rt. 47) and the Manumuskin River in Port Elizabeth; then west

# Deer Management Zone

## BOUNDARY DESCRIPTIONS

*(continued from page 41)*

along the south bank of Manumuskin River to its intersection with the Maurice River; then north along the east bank of the Maurice River to its intersection with Rt. 49 in Millville; then east on Rt. 49 to its intersection with Delsea Drive (Rt. 47); then north on Rt. 47 to its intersection with Broad Street (Rt. 552 spur), the point of beginning.

**Zone No. 46:** That portion of Atlantic County lying within a continuous line beginning at the intersection of Rt. 49 and the Tuckahoe River at Hunter's Mill; then southeast along Rt. 49 to its intersection with the Tuckahoe River and the Atlantic-Cape May County line at Head of River; then eastward along the north bank of the Tuckahoe River to Great Egg Harbor Bay and the Egg Harbor Township line on the Egg Harbor River; then northwest along the west bank of the Egg Harbor River to its intersection with Rt. 40 at Mays Landing; then west on Rt. 40 to its intersection with Estell Ave; then south on Estell Ave. to its intersection with Rt. 552 then southwest on Rt. 552 to its intersection with the Tuckahoe River at Milmay; then south along the east bank of the Tuckahoe River to its intersection with Rt. 49 at Hunter's Mill the point of beginning. The Atlantic County Park System (Zone 61) is excluded from Zone 46.

**Zone No. 47:** That portion of Gloucester, Atlantic and Cumberland counties lying within a continuous line beginning at the intersection of Rts. 47 and 40 at Malaga; then southeast on Rt. 40 to its intersection with Estell Ave; then south on Estell Ave to its intersection with Rt. 552; then southwest on Rt. 552 to spur 552; then west on spur 552 to its intersection with Rt. 47 at Millville; then north on Rt. 47 to Malaga, the point of beginning.

**Zone No. 48:** That portion of Burlington County lying within a continuous line beginning at the intersection of the New Jersey Turnpike and Route 38 near Moorestown; then east along Route 38 to its intersection with Route 530; then east along Route 530 along the Pemberton by-pass to its intersection with the southern boundary of Fort Dix Military Reservation; then northward along the western Fort Dix boundary to its intersection with County Road 670; then east on County Road 670 to its intersection with Route 545 at Wrightstown; then northwest on Route 545 which becomes Farnsworth Avenue; then continuing northwest on Farnsworth Ave. to its intersection with W. Burlington Street; then southwest on W. Burlington St. to its intersection with Interstate 295; then north on Interstate 295 to its intersection with Crosswicks Creek at Bordentown; then west along the south bank of Crosswicks Creek to its intersection with the Delaware River at Bordentown; then southwest along the east bank of the Delaware River to Route 541 at the City of Burlington; then southeast along Route 541 to its intersection with Interstate 295; then southwest along Interstate 295 to its intersection with Rancocas Creek; then east along Rancocas Creek to its intersection with the New Jersey Turnpike; then southwest along the New Jersey Turnpike to its intersection with Route 38, the point of beginning. New Bold and Burlington Islands lying in the Delaware River are in this zone.

**Zone No. 49:** That portion of Gloucester, Camden and Burlington counties lying within a continuous line beginning at the mouth of Mantua Creek on the Delaware River; then northeast along the east bank of the Delaware River to Rt. 541 at the City of Burlington; then southeast along Rt. 541 to its intersection with Interstate 295; then southwest along Interstate-295 to its intersection with Rancocas Creek; then east along the Rancocas Creek to its intersection with the New Jersey Turnpike; then southwest along the New Jersey Turnpike to its intersection with Rt. 73; then south along Rt. 73 to its intersection with County Road 689 (Cross Keys Road) at Berlin; then southwest along County Road 689 to its intersection with County Road 688 Turnersville-Hickstown Road); then west along County road 688 to its intersection with County Road 705; then northwest along County Road 705 (County House Road) to its intersection with County Road 635 (Grenlode-Hurville Road); then southwest on County Road 635 to its intersection with Mantua Creek; then northwest along Mantua Creek to its mouth at the Delaware River, the point of beginning. Petty Island lying in the Delaware River is in this zone.

**Zone No. 50:** That portion of Monmouth and Middlesex counties lying within a continuous line beginning at the intersection of the New Jersey Turnpike and Rt.

522 near Jamesburg; then southeast on Rt. 522 to the intersection with Rt. 537 at Freehold; then southwest on Rt. 537 to the intersection with business Rt. 33; then east on Rt. 33 to the intersection with the western edge of the fenced boundary of the Earle Naval Weapons Depot; then north and east along the fenced boundary of the Earle Depot to the intersection of County Route 38 (Wayside Rd.) and Rt. 547 at the most eastern point of the fenced boundary of Naval Weapons Station-Earle; then northeast on Rt. 547 to the intersection with the Garden State Parkway; then north on the Garden State parkway to the intersection with Rt. 36 near Eatontown; then east on Rt. 36 to the Atlantic Ocean; then north along the Atlantic coastline to the Raritan Bay; then south and west along the southern shore of Raritan Bay to the Raritan River; then continuing west along the south bank of the Raritan River to the intersection with the New Jersey Turnpike; then southwest along the New Jersey Turnpike to the intersection with Rt. 522, the point of beginning. Monmouth Battlefield State Park (Zone 64), and Naval Weapons Station Earle (Zones 39 and 40), are excluded from this zone.

**Zone No. 51:** That portion of Monmouth and Ocean counties lying within a continuous line beginning at the intersection of Rt. 547 and Rt. 571 near Lakehurst; then southeast along Rt. 571 to the intersection with the Garden State Parkway; then south on the Garden State Parkway to its intersection with Rt. 72 near Manahawkin; then east along Rt. 72 to the Atlantic Ocean at Ship Bottom; then north along the Atlantic coastline to the intersection with Rt. 36 in Long Branch; then west on Rt. 36 to the intersection with the Garden State Parkway near Eatontown; then south on the parkway to the intersection with 547; then south on Rt. 547 to the intersection with county route 38 (Wayside Road) at the eastern fenced boundary of Naval Weapons Station-Earle; then south along the eastern fenced boundary of Naval Weapons Station, Earle to the intersection with Rt. 34; then south on Rt. 34 to the intersection with Tinton Falls Rd. and Rt. 33; then south on Tinton Falls Rd. to the intersection with Rt. 547 (Asbury Rd.); then south on Rt. 547 through Farmingdale to the intersection with Rt. 571, the point of beginning.

**Zone No. 52:** Not designated.

**Zone No. 53:** That portion of Lakehurst Naval Air Engineering Center, U.S. Department of the Navy, designated as open for deer hunting, lying within Ocean county.

**Zone No. 54:** Those portions of Picatinny Arsenal, U.S. Department of the Army, Installation Management Agency (IMA), designated as open for deer hunting, lying within Morris County.

**Zone No. 55:** That portion of Gloucester County lying within a continuous line beginning at the intersection of Rts. 47 and 322 at Glassboro; then east along Rt. 322 (County Rt. 536) to its intersection with Rt. 655 (Fries Mill Rd.); then south on Rt. 655 to its intersection with Rt. 610 (Academy Avenue); then west on Rt. 610 to its intersection with Rt. 47 (Delsea Drive) at Clayton; then north along Rt. 47 to its intersection with Rt. 322 at Glassboro, the point of beginning.

**Zone No. 56:** That portion of Edwin B. Forsythe National Wildlife Refuge, U.S. Department of the Interior, located south of Stoney Hill Road, designated as open for deer hunting, lying within Atlantic County.

**Zone No. 57:** That portion of Edwin B. Forsythe National Wildlife Refuge, U.S. Department of the Interior, located north of Stoney Hill Road and south of the Mullica River, designated as open for deer hunting, lying within Atlantic County.

**Zone No. 58:** Those portions of Edwin B. Forsythe National Wildlife Refuge, including the Barnegat Division, U.S. Department of the Interior, located north of the Mullica River, designated as open for deer hunting, lying within Burlington and Ocean counties.

**Zone No. 59:** That portion of Supawna Meadows National Wildlife Refuge, U.S. Department of the Interior, designated as open for deer hunting, lying within Salem County.

# Deer Management Zone

## BOUNDARY DESCRIPTIONS

**Zone No. 60:** Not designated.

**Zone No. 61:** Those portions of the Atlantic County Park System, County of Atlantic, designated as open for deer hunting, lying within Atlantic County.

**Zone No. 62:** Not designated.

**Zone No. 63:** That portion of Salem County lying within a continuous line beginning at the intersection of the Salem Canal and the Delaware River at Deepwater; then eastward along the south bank of the Salem Canal to its intersection with the Salem River; then southward along the west bank of the Salem River to its intersection with Rt. 49 at Salem; then southeastward on Rt. 49 to its intersection with Alloway Creek at Quinton; then southwest along the northern bank of the Alloway Creek to its intersection with the Delaware River; then northward along the east bank of the Delaware River and New Jersey State line to Finns Point and Fort Mott State Park; then northward along the New Jersey State Line through Killcohook National Wildlife Refuge to the Delaware River; then northwest along the east bank of the Delaware River; then northwestward along the east bank of the Delaware River and New Jersey State line to its intersection with the Salem Canal at Deepwater, the point of beginning. The Supawna Meadows National Wildlife Refuge (Zone 59) is excluded from Zone 63.

**Zone No. 64:** That portion of Monmouth Battlefield State Park, designated as open for deer hunting, lying within Monmouth County.

**Zone No. 65:** That portion of Camden and Gloucester counties lying within a continuous line beginning at the intersection of Rt. 322 and County Road Rt. 659 (Malaga-New Brooklyn Rd.) in Monroe Township, Gloucester County; then northeast along Rt. 659 to its intersection with County Road Rt. 536 at New Brooklyn; then northward along Rt. 536 to its intersection with County Road Rt. 720 (Brooklyn-Blue Anchor Rd.); then southeast on Rt. 720 to its intersection with Rt. 73 near Blue Anchor; then southward along Rt. 73 to its intersection with Piney Hollow Road; then southwest along Piney Hollow

Road to its intersection with Rt. 322; then west along Rt. 322 to its intersection with County Road Rt. 659, the point of beginning.

**Zone No. 66:** That portion of Atlantic County including lands, roads, right of ways and easements within the contiguous boundary of the Federal Aviation Administration William J. Hughes Technical Center, excluding Laurel Memorial Park Cemetery. Lands open for deer hunting only and persons authorized to hunt deer on the facility shall be determined by the Federal Aviation Administration William J. Hughes Technical Center, the administrative agency.

**Zone No. 67:** That portion of High Point State Park, located north and east of Deckertown Turnpike (Rt. 650), designated as open to hunting, lying within Sussex County. ♪



**NJ HUNTER**  
[www.nj-hunter.com](http://www.nj-hunter.com)  
Created for Hunters ... by Hunters  
NJ's Premier Hunting Website

*In every walk  
with nature  
one receives  
far more than  
he seeks.*  
—John Muir



**WILLINGBORO**  
**RV AUTO**  
(888) 869-4242 • [www.willingrv.com](http://www.willingrv.com)

ITASCA Palomino Dura Four Winds Sun Valley TrailManor  
The Travel Trailer That  
Takes Like A Pop-Up

**SALES • SERVICE • PARTS • STORAGE**  
**New Jersey's Full Service RV Center**  
4175 Route 130 South Edgewater Park, NJ 08010 • Fax (609) 877-9206

# 2005-06 Deer Season

## REGULATION SETS

### Regulation Set #1

#### ZONE(S): 4

- Legal hunting hours: 1/2 hour before sunrise to 1/2 hour after sunset.
- No deer hunting on Sunday.
- Hunters must surrender a valid ANTLERED BUCK STUB from their 2005 license whenever harvesting an antlered deer.
- **Note:** Supplemental Deer Transportation Tags marked "valid for the taking of a 3rd or more deer" are not valid in any zone within Regulation Sets # 1, 2 or 3.

**Fall Bow (24 days): Oct. 1 - 28, 2005** Season bag limit is two deer, only ONE may be antlered (see **Note** above).

**Permit Bow (25 days): Oct. 29 - Nov. 26, 2005** Season bag limit is two deer, only ONE may be antlered (see **Note** above). Hunters may purchase only one special season bow permit per zone.

**Youth Day – Bow (1 day): Sept. 24, 2005**

**Youth Day – Firearm (1 day): Nov. 19, 2005** Season bag limit is one deer of either sex for qualified youth hunters only. Any deer harvested by a qualified youth hunter accompanied by a similarly licensed, non-shooting adult mentor is NOT included as part of the youth's bag limit for the Fall Bow or Six-day Firearm Season.

**Permit Muzzleloader (13 days): Nov. 28, 29 and Dec. 12, 13, 17, 19 - 24 and 26, 27, 2005** Season bag limit is two deer, only ONE may be antlered (see **Note** above). Hunters may purchase only one special season muzzleloader permit per zone.

**Six-day Firearm (6 days): Dec. 5 - 10, 2005** Season bag limit is two antlered deer; however, if hunter harvests two antlered deer, he/she forfeits the opportunity to harvest an antlered deer during the Permit Shotgun Season. Only one buck may be taken at a time.

**Permit Shotgun Season (1 day): Dec. 14, 2005** Season bag limit is one deer – which MUST be antlerless if two antlered deer were harvested during the Six-Day Firearm Season (see **Note** above). Hunters may purchase only one special season shotgun permit per zone.

**Winter Bow (26 days): Jan. 2 – 31, 2006** Season bag limit is two deer, only ONE may be antlered (see **Note** above). Use 2006 Winter Bow BUCK Stub if an antlered deer is harvested.

### Regulation Set #2

#### ZONE(S): 1, 3\*, 21, 23, 24, 43, 45, 46 \* Any antlered deer taken in Zone 3 must have at least three antler points on one side of the rack.

- Legal hunting hours :1/2 hour before sunrise to 1/2 hour after sunset.
- No deer hunting on Sunday.
- Hunters must surrender a valid ANTLERED BUCK STUB from their 2005 license whenever harvesting an antlered deer.
- **Note:** Supplemental Deer Transportation Tags marked "valid for the taking of a 3rd or more deer" are not valid in any zone within Regulation Sets # 1, 2 or 3.

**Fall Bow (24 days): Oct. 1 - 28, 2005** Season bag limit is two deer, only ONE may be antlered (see **Note** above).

**Permit Bow (25 days): Oct. 29 - Nov. 26, 2005** Season bag limit is two deer, only ONE may be antlered (see **Note** above). Hunters may purchase only one special season bow permit per zone.

**Youth Day – Bow (1 day): Sept. 24, 2005**

**Youth Day - Firearm (1 day): Nov. 19, 2005** Season bag limit is one deer of either sex for qualified youth hunters only. Any deer harvested by a qualified youth hunter accompanied by a similarly licensed, non-shooting adult mentor is NOT included as part of the youth's bag limit for the Fall Bow or Six-day Firearm Season.

**Permit Muzzleloader (22 days): Nov. 28, 29, and Dec. 12, 13, 17 - 31, 2005 and Jan. 2 - 6, 2006** Season bag limit is two deer, only ONE may be antlered (see **Note** above). Hunters may purchase only one special season muzzleloader permit per zone.

**Six-day Firearm (6 days): Dec. 5 – 10, 2005** Season bag limit is two antlered deer; however, if hunter harvests two antlered deer, he/she forfeits the opportunity to harvest an antlered deer during the Permit Shotgun Season. Only one buck may be taken at a time.

**Permit Shotgun Season (1 day): Dec. 14, 2005** Season bag limit is one deer – which MUST be antlerless if two antlered deer were harvested during the Six-Day Firearm Season (see **Note** above). Hunters may purchase only one special season shotgun permit per zone.

**Winter Bow (26 days): Jan. 2 – 31, 2006** Season bag limit is two deer, only ONE may be antlered (see **Note** above). Use 2006 Winter Bow BUCK Stub if an antlered deer is harvested.

*Colors coded to Regulation Set Reference Chart and Zone Map (page 34)*



### Regulation Set #3

**ZONE(S): 6\*, 18, 30, 34, 55, 65 \*** Any antlered deer taken in Zone 6 must have at least three antler points on one side of the rack.

- Legal hunting hours: 1/2 hour before sunrise to 1/2 hour after sunset.
- No deer hunting on Sunday.
- Hunters must surrender a valid ANTLERED BUCK STUB from their 2005 license whenever harvesting an antlered deer.
- **Note:** Supplemental Deer Transportation Tags marked "valid for the taking of a 3rd or more deer" are not valid in any zone within Regulation Sets # 1, 2 or 3.

**Fall Bow (24 days):** Oct. 1- 28, 2005 Season bag limit is two deer, only ONE may be antlered (see **Note** above).

**Permit Bow (25 days):** Oct. 29 - Nov. 26, 2005 Season bag limit is two deer, only ONE may be antlered (see **Note** above). Hunters may purchase only one special season bow permit per zone.

**Youth Day – Bow (1 day):** Sept. 24, 2005

**Youth Day – Firearm (1 day):** Nov. 19, 2005 Season bag limit is one deer of either sex for a qualified youth hunter only. Any deer harvested by a qualified youth hunter accompanied by a similarly licensed, non-shooting adult mentor is NOT included as part of the youth's bag limit for the Fall Bow or Six-day Firearm season.

**Permit Muzzleloader (22 days):** Nov. 28, 29 and Dec. 12, 13, 17 - 31, 2005 and Jan. 2 - 6, 2006 Season bag limit is two deer, only ONE may be antlered (see **Note** above). Hunters may purchase only one special season muzzleloader permit per zone.

**Six-day Firearm (6 days):** Dec. 5 – 10, 2005 Season bag limit is two antlered deer; however, if hunter harvests two antlered deer, he/she forfeits the opportunity to harvest an antlered deer during the Permit Shotgun Season. Only one buck may be taken at a time.

**Permit Shotgun Season (3 days):** Dec. 14 - 16, 2005 Season bag limit is two deer – which MUST be antlerless if two antlered deer were harvested during the Six-Day Firearm Season (see **Note** above). Hunters may purchase only one special season shotgun permit per zone.

**Winter Bow (26 days):** Jan. 2 – 31, 2006 Season bag limit is two deer, only ONE may be antlered (see **Note** above). Use 2006 Winter Bow BUCK Stub if an antlered deer is harvested.

### Regulation Set #4

**ZONE(S): 2, 16, 22, 26, 27\*, 28, 29\*, 31, 35\*, 47, 63\* \*** Any antlered deer taken in Zones 27, 29, 35 or 63 must have at least three antler points on one side of the rack.

- Legal hunting hours: 1/2 hour before sunrise to 1/2 hour after sunset.
- No deer hunting on Sunday.
- Hunters must surrender a valid ANTLERED BUCK STUB from their 2005 license whenever harvesting an antlered deer.

**Fall Bow (42 days)**

First deer must be antlerless: Sept. 10 – 30, 2005

First deer may be antlered or antlerless: Oct. 1 to Oct. 28, 2005  
Season bag limit is unlimited antlerless deer and ONE antlered deer.

**Permit Bow ( 55 days):** Oct. 29 - Dec. 31, 2005 Season bag limit is unlimited antlerless deer and ONE antlered deer. Hunters may purchase only one special season bow permit per zone.

**Youth Day – Bow (1 day):** Sept. 24, 2005

**Youth Day - Firearm (1 day):** Nov. 19, 2005 Season bag limit is one deer of either sex for any qualified youth hunter only. Any deer harvested by a qualified youth hunter accompanied by a similarly licensed, non-shooting adult mentor is NOT included as part of the youth's bag limit for the Fall Bow or Six-day Firearm Season.

**Permit Muzzleloader (22 days):** Nov. 28, 29 and Dec. 12, 13, 17 - 31, 2005 and Jan. 2 – 6, 2006 Season bag limit is unlimited antler-

less deer and ONE antlered deer. Hunters may purchase only one special season muzzleloader permit per zone.

**Six-day Firearm (6 days):** Dec. 5 – 10, 2005 Season bag limit is two antlered deer; however, if hunter harvests two antlered deer, he/she forfeits the opportunity to harvest an antlered deer during the Permit Shotgun Season. Only one buck may be taken at a time.

**Permit Shotgun Season (10 days):** Dec. 14 – 16, 2005 and, Jan. 7 - 14, 2006 Season bag limit is unlimited antlerless deer and ONE antlered deer (ONLY if two antlered deer were not harvested during the Six-Day Firearm Season). Hunters may purchase only one special season shotgun permit per zone.

**Winter Bow (26-days):** Jan. 2 – 31, 2006 Season bag limit is unlimited antlerless deer and ONE antlered deer. Use 2006 Winter Bow BUCK Stub if an antlered deer is harvested.

**Colors coded to Regulation Set Reference Chart and Zone Map (page 34)**

# 2005-06 Deer Season

## REGULATION SETS

### Regulation Set #6

#### ZONE(S): 5, 17, 19, 25, 42, 48

- Legal hunting hours: 1/2 hour before sunrise to 1/2 hour after sunset.
- No deer hunting on Sunday.
- Hunters must surrender a valid ANTLERED BUCK STUB from their 2005 license whenever harvesting an antlered deer.

#### Fall Bow (42 days):

First deer must be antlerless: Sept. 10 – 30, 2005

First deer may be antlered or antlerless: Oct. 1 - 28, 2005 Season bag limit is unlimited antlerless deer and ONE antlered deer.

Permit Bow (55 days): Oct. 29 - Dec. 31, 2005 Season bag limit is unlimited antlerless deer and ONE antlered deer. Hunters may purchase only one special season bow permit per zone.

Youth Day – Bow (1 day): Sept. 24, 2005

Youth Day - Firearm (1 day): Nov. 19, 2005

Season bag limit is one deer of either sex for any qualified youth hunter only. Any deer harvested by a qualified youth hunter accompanied by a similarly licensed, non-shooting adult mentor is NOT included as part of the youth's bag limit for the Fall Bow or Six-day Firearm Seasons.

#### Permit Muzzleloader (49 days):

Antlerless deer only: Dec. 5 – 10, 2005

Antlered or Antlerless: Nov. 28, 29 and Dec. 12, 13, 17 - 31, 2005 and Jan. 2 – 31, 2006 Season bag limit is unlimited antlerless deer

and ONE antlered deer. Hunters may purchase only one special season muzzleloader permit per zone. Two deer may be taken at one time.

Six-day Firearm (6 days): Dec. 5 – 10, 2005 Season bag limit is two antlered deer; however, if hunter harvests two antlered deer, he/she forfeits the opportunity to harvest an antlered deer during the Permit Shotgun Season. Only one buck may be taken at a time.

#### Permit Shotgun Season (30 days):

Antlerless deer only: Dec. 5 – 10, 2005

Antlered or Antlerless: Dec. 14 - 16, 2005 and Jan. 7 – 31, 2006 Season bag limit is unlimited antlerless deer and ONE antlered deer (ONLY if two antlered deer were not harvested during the Six-Day Firearm Season). Hunters may purchase only one special season shotgun permit per zone. Two deer may be taken at one time.

Winter Bow (26 days): Jan. 2 – 31, 2006 Season bag limit is unlimited antlerless deer and ONE antlered deer. Use 2006 Winter Bow BUCK Stub if an antlered deer is harvested.

### Regulation Set #8

#### ZONE(S): 7, 8, 9\*, 10, 11, 12, 13\*, 14, 15, 36, 41, 49, 50, 51 \*Any antlered deer taken in Zones 9 or 13 must have at least three antler points on one side of the rack.

- Legal hunting hours: 1/2 hour before sunrise to 1/2 hour after sunset.
- No deer hunting on Sunday.
- Hunters must surrender a valid ANTLERED BUCK STUB from their 2005 license whenever harvesting an antlered deer.
- Earn-A-Buck ends after Dec. 10, 2005 for ALL seasons.
- Bank-A-Doe program affects Fall and Permit Bow seasons. See page 29 for details.

Fall Bow (42 days): Sept. 10 - Oct. 28, 2005 Earn-A-Buck: Hunters first must take an ANTLERLESS deer from any Earn-A-Buck Zone. Season bag limit is unlimited antlerless deer and ONE antlered deer. See Deer Hunting Regulations, page 29, for new Bank-A-Doe option.

Permit Bow (52 days): Oct. 29 - Nov. 19 and Nov. 24 - Dec. 31, 2005 Earn-A-Buck: Hunters first must take an ANTLERLESS deer from any Earn-A-Buck Zone through Dec. 10, 2005 unless participating in the Bank-A-Doe program: if two antlerless deer are taken during Fall Bow from a zone in this Regulation Set and checked only at a participating check station, an antlered deer may be taken as your first deer. Season bag limit is unlimited antlerless deer and ONE antlered deer. Hunters may purchase only one special season bow permit per zone.

Youth Day – Bow (1 day): Sept. 24, 2005

Youth Day - Firearm (1 day): Nov. 19, 2005 Season bag limit is one deer of either sex for qualified youth hunters only. Any deer harvested by a qualified youth hunter accompanied by a similarly licensed, non-shooting adult mentor is NOT included as part of the youth's bag limit for the Fall Bow or Six-day Firearm Season.

#### Permit Muzzleloader (63 days):

Antlerless deer only: Nov. 21 – 23, 25 and Dec. 5 – 10, 2005

Antlered or Antlerless: Nov. 28, 29 and Dec. 12, 13, 17 - 31, 2005 and

Jan. 2 – Feb. 11, 2006

Earn-A-Buck: Hunters first must take an ANTLERLESS deer from any Earn-A-Buck Zone through Dec. 10, 2005. Season bag limit is unlimited antlerless deer and ONE antlered deer. Hunters may purchase only one special season muzzleloader permit per zone. Two deer may be taken at one time.

Six-day Firearm (6 days): Dec. 5 – 10, 2005 Season bag limit is two antlered deer; however, if hunter harvests two antlered deer, he/she forfeits the opportunity to harvest an antlered deer during the Permit Shotgun Season. Only one buck may be taken at a time.

#### Permit Shotgun Season (44 days):

Antlerless deer only: Nov. 21 - 23, 25 and Dec. 5 – 10, 2005

Antlered or Antlerless: Dec. 14 - 16, 2005 and Jan. 7 – Feb. 11, 2006

Season bag limit is unlimited antlerless deer and ONE antlered deer (ONLY if two antlered deer were not harvested during the Six-Day Firearm Season). Hunters may purchase only one special season shotgun permit per zone. Two deer may be taken at one time.

Winter Bow (42 days): Jan. 2 – Feb. 18, 2006 Season bag limit is unlimited antlerless and ONE antlered deer. Use 2006 Winter Bow BUCK Stub if an antlered deer is harvested.

Colors coded to Regulation Set Reference Chart and Zone Map (page 34)

### Special Areas Deer Hunting Season Information

Special areas include Federal Military Installments, certain state and county parks and national wildlife refuges where hunter access is controlled. All state game laws and regulations apply to Special Areas.

Only ONE antlered deer may be taken per season, statewide, regardless of the number of permits possessed.

Due to homeland security measures and military actions, NJ Division of Fish and Wildlife cannot guarantee all military installations will be available or open to hunting throughout each deer season. Hunters are reminded that Fish and Wildlife has a "no refund – no exchange" policy for deer permits.

#### Special Areas - County and State Parks

##### Atlantic County Park System (Zone 61):

To hunt the Atlantic County Park System, hunters must apply for a Zone 61 permit through the mail-in lottery. Use the permit application in this *Digest*.

**Permit Bow Season:** Oct. 29, 2005 to Jan. 31, 2006 (81 days)—**bag limit:** unlimited antlerless deer and ONE antlered deer. A total of 40 permits will be available.

**Permit Muzzleloader Season:** Nov. 28, 29 and Dec. 12, 13, 17-31, 2005 and, Jan. 2-6, 2006 (22 days)—**bag limit:** unlimited antlerless deer and ONE antlered deer. A total of 40 permits will be available.

**Six-day Firearm Season:** Dec. 5-10, 2005 - **bag limit: two antlered deer.** Note: If the hunter chooses to harvest two antlered bucks during the Six-day Firearm Season, he/she forfeits the opportunity to harvest a buck during the permit shotgun season, therefore the bag limit for the permit shotgun season then becomes antlerless deer only.

**Permit Shotgun Season:** Dec. 5-10 and 14-16, 2005 (9 days)—**bag limit:** unlimited antlerless deer and ONE antlered deer. (ONLY if two antlered deer were not taken during the Six-day Firearm Season). A total of 80 permits will be available.

Deer hunting is prohibited at all other times. The Atlantic County Park office is located at 6303 Old Harding Highway, Mays Landing, NJ 08330. All applicants must call (609) 625-8219 prior to the lottery, for specific rules, restrictions and orientation dates. Hunter Orientation attendance is required for Zone 61. The use of bait is prohibited in Zone 61.

##### High Point State Park (Zone 67):

To hunt High Point State Park, hunters must apply for a Zone 67 permit through the mail-in lottery. Use the permit application in this *Digest*.

**Permit Muzzleloader Season:** Nov. 7 - 10 and 14 - 17, 2005 (8 days)—**bag limit -** unlimited antlerless deer and ONE antlered deer. The hunter's first deer must be antlerless. Successful hunters may then harvest an antlered deer. Any antlered deer taken in Zone 67 must have at least one antler with three antler points. A total of 350 permits will be available.

Deer hunting is prohibited here at all other times. Hunters are not permitted in the park before 6 a.m. or after 6 p.m. The Division of Parks and Forestry charges a non-refundable \$10 administration fee. Hunters will receive a receipt when the fee is collected; this receipt must be carried while deer hunting. The High Point State Park office is located at 1480 Route 23 South in Sussex. Call (973) 875-4800 for further information on park regulations and hunter orientation dates before applying for a Zone 67 permit.

##### Hunterdon County Park System:

Parks within the Hunterdon County Park System open to deer hunting require a park access permit. Applications are available at the Hunterdon County Park office on Route 31 in Flemington. Call (908) 782-1158 for further information before hunting.

##### Mercer County Parks:

Sportsmen wishing to hunt deer in **Baldpate Mountain** in Hopewell Township (Deer Management Zone 41) should contact the Mercer County Park Commission at (609) 448-7107.

**Howell Living History Farm** in Hopewell Township (Deer Management

Zone 41) will be open for limited permit muzzleloader and winter bow hunting. Howell Living History Farm charges a non-refundable \$5 processing fee. Deer hunting in Howell Living History Farm is prohibited at all other times. Please call (609) 737-3299 for further information, season dates, maps and access permits before purchasing a Zone 41 permit.

##### Monmouth Battlefield State Park (Zone 64):

To hunt the Monmouth Battlefield State Park, hunters must apply for a Zone 64 permit through the mail-in lottery. Use the permit application in this *Digest*.

Information on the Hunter Orientation will be announced and also mailed to permit holders.

**Permit Shotgun Season :** Jan. 11, 13, 18 and 20, 2006 (4 days)—**bag limit:** unlimited antlerless deer and ONE antlered deer (ONLY if two antlered deer were not taken during the Six-day Firearm Season). Two deer may be taken at one time. A total of 100 permits will be available.

Deer hunting is prohibited at all other times. Hunters must comply with all state park regulations that include a mandatory hunter orientation session for all hunters. Call (732) 462-9616 for further information on additional park regulations before applying for a Zone 64 permit. For further information on Fish and Wildlife regulations, call (609) 259-6965.

##### Monmouth County Park System:

Portions of specified parks within the Monmouth County Park System will be open to deer hunting. A park system permit is required. Please call (732) 842-4000 or visit [www.monmouthcountyparks.com](http://www.monmouthcountyparks.com) for maps and further information.

##### Morris County Park System:

Parks within the Morris County Park System will be open for limited permit shotgun hunting. The Park System is closed to deer hunting at all other times. Permits will be available from Sept. 12 - 16. Note: zone boundaries have changed. Please call (973) 326-7632 for further information and season dates.

##### Rancocas State Park:

Designated areas of the park will be open to deer hunting during the Fall Bow, Permit Bow and Winter Bow Seasons (Deer Management Zone 48 regulations apply). The park is closed to deer hunting at all other times. Call (609) 726-1191 or write to Rancocas State Park, c/o Brendan Byrne State Forest, PO Box 215, New Lisbon, NJ 08064 for further information and a detailed map before hunting in Rancocas State Park.

##### Round Valley Recreation Area:

Designated portions of the Area will be open to deer hunting during all or portions of the Fall Bow, Permit Bow and Permit Shotgun Seasons (Deer Management Zone 12 regulations apply). The area is closed to deer hunting at all other times. Call (908) 236-6355 for further information and registration requirements.

##### Six-Mile Run Reservoir State Park:

Designated areas of the Park will be open to deer hunting during the Fall Bow, Permit Bow and Winter Bow Seasons (Deer Management Zone 14 regulations apply). The park is closed to deer hunting at all other times. Call the Delaware-Raritan Canal State Park (732) 873-3050 for further information and a detailed map before hunting in Six-Mile Run Reservoir State Park. ►

# Deer Hunting Seasons

## SPECIAL AREAS INFORMATION

(continued from page 47)

### Spruce Run Recreation Area:

Designated portions of the Area will be open to deer hunting weekdays during the Fall Bow and Permit Bow Seasons (Deer Management Zone 7 regulations apply). The area is closed to deer hunting at all other times. Call (908) 638-8572 for further information and registration requirements.

### Special Areas - Federal Installations (other than National Wildlife Refuges)

#### Earle Naval Weapons Station Depot (Zone 39 and Zone 40):

Not open to the general public. The following information is provided for civilian employees or military personnel assigned to the base. **Permits for Zones 39 and 40 will be sold only at Earle NWS.** Bring your completed application(s) to the station's annual hunter orientation. Contact Ray Green, Station Game Warden, (732) 866-2708 for further information. Deer hunting is allowed on Christmas Day and New Year's Day in Zones 39 and 40.

*In Zone 40, the hunter's first deer must be antlerless and any antlered deer taken in Zone 40 during all open seasons must have at least one antler with three antler points.*

**Fall Bow Season (Zone 39):** Oct. 1 - 28, 2005 (24 days)—**bag limit:** unlimited antlerless deer and ONE antlered deer.

**Fall Bow Season (Zone 40):** Sept. 10 - Oct. 28, 2005 (42 days)—**bag limit:** unlimited antlerless deer and ONE antlered deer.

**Permit Bow Season (Zone 39):** Oct. 29 - Dec. 31, 2005 (54 days)—**bag limit:** unlimited antlerless deer and ONE antlered deer. A total of 110 permits will be available.

**Permit Bow Season (Zone 40):** Oct. 29 - Dec. 31, 2005 (54 days) - **bag limit:** unlimited antlerless deer and ONE antlered deer. A total of 80 will be available.

**Six-day Firearm Season (Zone 39):** Dec. 5-10, 2005—**bag limit:** two antlered deer.

**Note:** If the hunter chooses to harvest two antlered bucks during the Six-day Firearm Season, he/she forfeits the opportunity to harvest a buck during the permit shotgun season, therefore the bag limit for the permit shotgun season then becomes antlerless deer only.

**Six-day Firearm Season (Zone 40):** Closed.

**Permit Muzzleloader (Zone 39):** Nov. 28 - Dec. 3, 12-31, 2005 and Jan. 2 - 31, 2006 (50 days)—**bag limit:** unlimited antlerless deer and ONE antlered deer. Two deer may be taken at one time. A total of 100 permits will be available.

**Permit Muzzleloader Season (Zone 40):** Nov. 5, 11, 12, 19 and 21 - 23, 25 and 26, 2005 (9 days)—**bag limit:** unlimited antlerless deer and ONE antlered deer. Two deer may be taken at one time. A total of 50 permits will be available.

**Permit Shotgun Season (Zone 39):** Dec. 3, 5-10, 17, 24 and 31, 2005 and Jan. 7, 14, 21 and 28, 2006 (14 days)—**bag limit:** unlimited antlerless deer and ONE antlered deer (ONLY if two antlered deer were not taken during the Six-day Firearm season). Two deer may be taken at one time. A total of 160 permits will be available.

**Permit Shotgun Season (Zone 40):** Nov. 21-23, 25 and 26, 2005 (5 days)—**bag limit:** unlimited antlerless deer and ONE antlered deer (ONLY if two antlered deer were not taken during the Six-day Firearm season). Two deer may be taken at one time. A total of 50 permits will be available.

**Winter Bow Season (Zone 39):** Jan. 2-31, 2005 (26 days)—**bag limit:** unlimited antlerless deer and ONE antlered deer.

**Winter Bow Season (Zone 40):** Jan. 2-31, 2005 (26 days)—**bag limit:** unlimited antlerless deer and ONE antlered deer.

#### Federal Aviation Administration William J. Hughes Technical Center (Zone 66):

The Technical Center is open to deer hunting through a cooperative agreement between the FAATC, NJ Division of Fish and Wildlife, New Jersey State

Federation of Sportsmen's Clubs (NJSFSC) and the United Bowhunters of New Jersey (UBNJ). Membership in either the NJSFSC or UBNJ is required in order to obtain access to the Technical Center for deer hunting. Please call (609) 485-6938 for further information.

**The use of bait is prohibited in Zone 66.**

**Fall Bow Season:** Sept. 10 to Oct. 28, 2005 (42 days)—**bag limit:** unlimited antlerless deer and ONE antlered deer.

**Permit Bow Season:** Oct. 29 to Dec. 31, 2005 (55 days)—**bag limit:** unlimited antlerless deer and ONE antlered deer. A total of 80 permits will be available.

**Permit Muzzleloader Season:** Nov. 26 to Dec. 3, 9, 10, 2005 and Jan. 7, 14, 2006. (11 days)—**bag limit:** unlimited antlerless deer and ONE antlered deer. Two deer may be taken at one time. A total of 15 permits will be available.

**Permit Shotgun Season:** Nov. 26 to Dec. 3, 9, 10, 2005 and Jan. 7, 14, 2006. (11 days)—**bag limit:** unlimited antlerless deer and ONE antlered deer (ONLY if two antlered deer were not taken during the Six-day Firearm season). Two deer may be taken at one time. A total of 65 permits will be available.

**Winter Bow Season:** Jan. 2-31, 2006 (26 days)—**bag limit:** unlimited antlerless deer and ONE antlered deer.

#### Fort Dix Military Reservation (Zone 37):

**\*NOTE: DMZ 52 is no longer designated as a separate zone. ALL of Fort Dix Military Reservation is now designated as DMZ 37.**

**To hunt Fort Dix Military Reservation, hunters must apply for a Zone 37 permit through the mail-in lottery. Use the permit application in this Digest.** A total of fifteen percent of the permit quota will be held in reserve at Fort Dix for special military related circumstances. Hunters must comply with all Fort Dix regulations. Persons hunting on the Base must pay an annual fee and must sign in and out at Range 14 on a daily basis when hunting. Military training will take precedence over hunting. Please call (609) 562-6667 or (609)562-4676 for further information and fee schedules. Deer hunting is not allowed on Christmas Day or New Year's Day in Zone 37.

*Any antlered deer taken in Zone 37 during all open seasons must have at least one antler with three antler points.*

**Fall Bow Season:** Oct. 1 - 28, 2005 (24 days)—**bag limit:** unlimited antlerless deer and ONE antlered deer.

**Permit Bow Season:** Oct. 29 - Dec. 31, 2005 (54 days)—**bag limit:** unlimited antlerless deer and ONE antlered deer. A total of 300 permits will be available.

**Six-day Firearm Season:** Dec. 5-10, 2005—**bag limit:** two antlered deer  
**Note:** If the hunter chooses to harvest two antlered bucks during the Six-day Firearm Season, he/she forfeits the opportunity to harvest a buck during the Permit Shotgun Season, therefore the bag limit for the permit shotgun season then becomes antlerless deer only.

**Permit Muzzleloader Season:** Nov. 7-11 and Dec. 12-31, 2005 and Jan. 2 - 7, 2006 (29 days)—**bag limit:** two deer - only ONE may be antlered. A total of 480 permits will be available.

**Permit Shotgun Season:** Dec. 17, 2005 (1 day)—**bag limit:** one deer (must be antlerless if two antlered deer were harvested during the Six-day Firearm Season). A total of 100 permits will be available.

**Winter Bow Season:** Jan. 2 - Feb. 18, 2006 (42 days)—**bag limit:** unlimited antlerless deer and ONE antlered deer.

#### Lakehurst Naval Air Engineering Station (Zone 53):

There will be limited public hunting for hunters who are sponsored by the current members of the Navy Lakehurst Rod and Gun Club. Military training will take precedence over hunting. **Permits for Zones 53 will only be sold at Lakehurst.** Call (732) 323-2911 for further information or contact John Joyce, Naval Air Engineering Station, Code N8L, Route 547, Lakehurst, NJ 08733-5065. Deer hunting is not allowed on Christmas Day in Zone 53.

**Fall Bow Season:** Oct. 1-28, 2005 (24 days)—**bag limit:** two deer- only

ONE may be antlered. Supplemental Deer Transportation Tags marked as valid for the taking of a 3rd or more deer are not valid in Zone 53.

**Permit Bow Season:** Oct. 29-Nov. 26, 2005 (25 days)—**bag limit:** two deer—only ONE may be antlered. A total of 100 permits will be available.

**Six-day Firearm Season:** Dec. 5-10, 2005—**bag limit:** two antlered deer  
**Note: If the hunter chooses to harvest two antlered bucks during the Six-day Firearm Season, he/she forfeits the opportunity to harvest a buck during the Permit Shotgun Season, therefore the bag limit for the permit shotgun season then becomes antlerless deer only.**

**Permit Muzzleloader Season:** Nov. 26- Dec. 3, 12-31, 2005 and Jan. 2-7, 2006 (31 days)—**bag limit:** two deer - only ONE may be antlered. A total of 100 permits will be available.

**Permit Shotgun Season:** Dec. 14-16, 2005 and Jan. 7-14, 2006 (10 days)—**bag limit:** unlimited antlerless deer and ONE antlered deer (ONLY if two antlered deer were not taken during the Six-day Firearm Season). A total of 100 permits will be available.

**Winter Bow Season:** Jan. 2-31, 2006 (26 days)—**bag limit:** two deer—only ONE may be antlered. Supplemental Deer Transportation Tags marked as valid for the taking of a 3rd or more deer are not valid in Zone 53.

### Picatiny Arsenal (Zone 54):

Not open to the general public. The following information is provided for military and federal civilian employees or retirees only. **Permits for Zone 54 will only be sold at the Arsenal.** Contact Jonathan Van De Venter at (973) 724-4691 for further information. Deer hunting is allowed on Christmas Day and New Year's Day in Zone 54, except on Sundays.

**Fall Bow Season:** Oct. 1 - 28, 2005 (24 days)—**bag limit:** unlimited antlerless deer and ONE antlered deer.

**Permit Bow Season:** Oct. 29 - Dec. 31, 2005 (55 days)—**bag limit:** unlimited antlerless deer and ONE antlered deer. A total of 40 permits will be available.

**Six-day Firearm Season:** Dec. 5 - 10, 2005—**bag limit:** two antlered deer.  
**Note: If the hunter chooses to harvest two antlered bucks during the Six-day Firearm Season, he/she forfeits the opportunity to harvest a buck during the Permit Shotgun Season, therefore the bag limit for the permit shotgun season then becomes antlerless deer only.**

**Permit Muzzleloader Season:** Nov. 28 and 29 and Dec. 12 - 31, 2005 and Jan. 2 - 7, 2006 (26 days)—**bag limit:** unlimited antlerless deer and ONE antlered deer. Two deer may be taken at one time. A total of 25 permits will be available.

**Permit Shotgun Season:** Dec. 5 - 10 and 31, 2005 and Jan. 14, 2006 (8 days)—**bag limit:** unlimited antlerless deer and ONE antlered deer (ONLY if two antlered deer were not taken during the Six-day Firearm Season). Two deer may be taken at one time. A total of 25 permits will be available.

**Winter Bow Season -** Jan. 2 - 31, 2006 (26 days)—**bag limit:** unlimited antlerless deer and ONE antlered deer.

### Special Areas - U.S. Fish and Wildlife National Wildlife Refuge System

Special U.S. Fish and Wildlife Service (USFWS) regulations are in effect throughout all authorized deer hunting seasons, in addition to state game laws and regulations. The following federal regulations apply to all national wildlife refuges (NWR) in New Jersey:

1. Hunting over bait or distributing bait is prohibited on all refuges.
2. The use of a spotlight or other artificial light— including automotive headlights - for the purpose of spotting, locating or taking any wildlife is prohibited on all refuges - regardless of whether one is in possession of a weapon.
3. All firearm hunters (muzzleloader and shotgun) must wear an orange garment consisting of at least 400 square inches of solid fluorescent orange

while deer hunting on any refuge (double the state law requirement).

4. Entry is prohibited on all refuge lands posted "Area Closed" and on refuge roadways posted with "Inholders Only" signs.

5. The use of nails, wire, screws or bolts to attach a stand to a tree, or hunting from a tree into which a metal object has been driven to support a hunter, is prohibited on all refuges.

Most refuges can accommodate individuals who have obtained a permit for handicapped hunters from the New Jersey Division of Fish and Wildlife, including permits to hunt from vehicles. Interested persons should contact the appropriate refuge in advance of the deer hunting seasons.

### Cape May NWR:

Cape May NWR will be open for all six deer seasons. Season dates and bag limits for Deer Management Zone 34 will apply. Contact the refuge office for more information at (609) 463-0994.

### Edwin B. Forsythe NWR (Zone 56, Zone 57 and Zone 58):

**To hunt the Edwin B. Forsythe NWR, hunters must apply for the appropriate Zone 56, 57 and/or 58 permit(s) through the mail-in lottery. Use the permit application in this Digest.**

Any left over lottery permits on the Edwin B. Forsythe NWR may be purchased as over-the-counter permits ONLY from the Brigantine office. Leftover bow, muzzleloader and shotgun permits for Zones 57 and 58 will be available starting on or about Oct. 14, 2005. The last day for permit purchases will be on Oct. 21, 2005. For permit availability, contact the New Jersey Division of Fish and Wildlife's Hunting Permit Hotline at (609) 292-9192 during the first week of October 2005.

The purchase of a Zone 22, 42 or 51 permit **does not** allow hunters to hunt anywhere on the Edwin B. Forsythe NWR!

All Zone 56, 57 and 58 permit purchases **must** be done **in person** by the hunter whose name will be on the permit. All hunters who obtain a deer permit **must** have their permit validated before they are allowed to scout or hunt the refuge. Validation of permits must be done at either the Brigantine or Barnegat Division Office, during business hours (8 a.m. - 4 p.m. Mon.- Fri.), or at the orientation sessions. Permit validation **must** be done **in person** by the hunter whose name appears on the permit. Those wishing to have their permits validated at the Barnegat Division, please call (609) 698-1387 prior to coming to the station headquarters. Only designated sections of the Edwin B. Forsythe NWR will be open for deer hunting. All other areas are **CLOSED**.

Hunters who will be hunting the Edwin B. Forsythe NWR for the first time are required to attend a hunter orientation prior to hunting or scouting. Orientations will be held at the Brigantine Division on Sunday, Aug. 28, Sunday, Oct. 16 and Sunday, Nov. 13, 2005. Orientation sessions will be held at the Barnegat Division on Sunday, Nov. 6 and Sunday Nov. 20, 2005. All sessions begin at 10 a.m. For additional and updated hunting information, call (609) 652-1665 or go to the Forsythe NWR Web site page at <http://forsythe.fws.gov/>.

All refuge deer hunters will be given a Refuge Deer Hunting Report Card. Regardless of hunting success, the report card **must** be completed and returned to the refuge. Failure to do so will result in denial of refuge hunting privileges for the 2006-07 season.

**Edwin B. Forsythe NWR (Zone 56) will be open for deer hunting to properly licensed hunters as follows:**

**Permit Shotgun Season:** Dec. 12-16, 2005 (5 days) - **bag limit:** unlimited antlerless deer and ONE antlered deer (ONLY if two antlered deer were not taken during the Six-day Firearm Season) Two deer may be taken at one time. A total of 25 permits will be available and will be sold on a first come, first served basis. **No Exceptions.**

**Edwin B. Forsythe NWR (Zone 57 and Zone 58) will be open for deer hunting to properly licensed hunters as follows:**

# Deer Hunting Seasons

## SPECIAL AREAS INFORMATION

(continued from page 49)

**Fall Bow Season (Zone 57 only):** Sept. 10 to Oct. 28, 2005 (42 days)—**bag limit:** unlimited antlerless deer and ONE antlered deer. An antlerless deer must be taken first from Sept. 10 to Sept. 30, 2005. There will be a limit of 25 hunters allowed to hunt Zone 57. A special access permit will be issued by the Edwin B. Forsythe NWR Office and will be distributed through a mail-in lottery. Access permit applications may be requested by calling (609) 652-1665 or from the Edwin B. Forsythe NWR Web site at <http://forsythe.fws.gov/>. The cost for this access permit is \$10 payable by check or money order. Postmarked applications will be accepted until Sept. 2, 2005.

**Permit Bow Season (Zone 57 and Zone 58):** Oct. 29 to Nov. 26, 2005 (25 days)—**bag limit:** unlimited antlerless deer and ONE antlered deer. A total of 40 permits will be available for Zone 57 and 50 permits will be available for Zone 58.

**Permit Muzzleloader (Zone 57 and Zone 58):** Nov. 28, 29 and Dec. 12, 13, 17-31, 2005 and Jan. 2-6, 2006 (22 days)—**bag limit:** unlimited antlerless deer and ONE antlered deer. A total of 40 permits will be available for Zone 57 and 50 permits will be available for Zone 58.

**Permit Shotgun Season (Zone 57 and Zone 58):** Dec. 5-10, 2005 and, Jan. 7-31, 2006 (27 days)—**bag limit:** unlimited antlerless deer and ONE antlered deer (ONLY if two antlered deer were not taken during the Six-day Firearm Season). A total of 40 permits will be available for Zone 57 and 75 permits will be available for Zone 58.

Zones 56, 57 and 58 are closed to deer hunting at all other times.

### Great Swamp NWR (Zone 38):

**Hunters wishing to hunt on the Great Swamp NWR will need to apply for a Zone 38 permit through the mail. Use the permit application in this Digest.**

The refuge will be open only for Permit Shotgun and Permit Muzzleloader Season hunting and closed to deer hunting at all other times. Hunters may only apply for a Permit Shotgun *or* a Permit Muzzleloader permit, not both. In addition to the state permit, the U.S. Fish and Wildlife Service will charge a \$22 fee (\$11 for holders of Golden Age or Golden Access passports) for the issuance of a federal hunting permit (free of charge to hunters under the age of 17). The refuge will supply additional information on hunt procedures and regulations to those hunters issued a Zone 38 permit. For further information, contact Refuge Wildlife Biologist Craig Bitler at (973) 425-1222, Extension 15.

**Great Swamp NWR (Zone 38) will be open for deer hunting to properly licensed hunters as follows:**

**Permit Shotgun and Permit Muzzleloader Season (concurrent):** Nov. 12, 16-19, 2005. Nov. 12 (Saturday) will be only for youths, ages 10-15, who possess a Zone 38 permit and who are accompanied by a licensed but non-hunting adult, at least 21 years of age, who also possesses a Zone 38 permit. **Bag limit:** unlimited antlerless deer and one antlered buck. The refuge emphasizes the harvest of adult does and manages for older age-class bucks. Hunters must check in an adult doe before they may take an antlered buck. The daily quota of hunters allowed afield is 275. A total of 390 shotgun and 10 muzzleloader permits will be available.

Zone 38 is closed to deer hunting at all other times.

### Supawna Meadows NWR (Zone 59):

**To hunt the Supawna Meadows NWR, hunters must apply for a Zone 59 permit through the mail-in lottery. Use the permit application in this Digest.**

In addition to the state permit, the U.S. Fish and Wildlife Service will charge a \$20 fee for the issuance of a federal hunting permit (no charge to holders of a Youth license under the age of 17). Successful applicants must attend one of three orientation sessions to be held at the refuge on the Saturday and Wednesday prior to the opening of bow season and the Friday

before the Youth Day hunt. Hunters who cannot attend one of the orientations should not apply for a permit to hunt on the refuge. Call (856) 935-1487 for further information regarding permit availability, fees and refuge regulations.

*Any antlered deer taken in Zone 59 during all open seasons must have at least one antler with three or more antler points.*

**Supawna Meadows NWR (Zone 59) will be open for deer hunting to properly licensed hunters as follows:**

**Permit Bow Season:** Oct. 29 to Nov. 26, 2005 (25 days)—**bag limit:** unlimited antlerless deer and ONE antlered deer. A total of 35 permits will be available. **Note:** On Nov. 19, 2005 Supawna Meadows permit bowhunting will be restricted to youth only for the Youth Deer Hunt day.

**Youth Day:** Nov. 19, 2005—**bag limit:** one deer of either sex. Permits will be available from the refuge office for 25 youth hunters (under the age of 17). If more than 25 applications are received, hunters will be chosen by random selection.

**Permit Muzzleloader Season:** Dec. 12-24, 2005 (12 days)—**bag limit:** unlimited antlerless deer and ONE antlered deer. Two deer may be taken at one time. A total of 25 permits will be available.

**Permit Shotgun Season:** Dec. 8-10, 2005 (first segment); Dec. 29-31, 2005 (second segment) and Jan. 19-21, 2006 (third segment) (three, 3-day segments)—**bag limit:** unlimited antlerless deer and ONE antlered deer (ONLY if two antlered deer were not taken during the Six-day Firearm Season). Two deer may be taken at one time. Permits are valid for one, three-day segment only. A total of 75 shotgun permits will be available.

Zone 59 is closed to deer hunting at all other times.

### Wallkill River NWR:

Designated areas of the refuge will be open to all six deer seasons. Season dates and bag limits for Deer Management Zone 2 will apply. Annual hunting map, additional regulations and a signed access permit from the refuge must be obtained prior to scouting or hunting. The access permit is \$10 (free for youth) and must be signed and carried at all times when hunting on refuge property. Please visit our web site at <http://wallkillriver.fws.gov/hunting.htm>, call (973) 702-7266 or write Wallkill River National Wildlife Refuge, 1547 County Route 565, Sussex, NJ 07461 for further information.

## Special Areas - Other Public Lands


### Bayside PSE&G Tract:

The Nature Conservancy (TNC) currently manages this 4,500-acre PSE&G property located in Greenwich Township, Cumberland County. A TNC access permit is required. Call (609) 861-0600 for permit applications, maps and site-specific regulations. Season dates and bag limits for Deer Management Zone 29 apply.

### Lizard Tail Swamp:

This 400-acre property, jointly owned by NJ Division of Fish and Wildlife and The Nature Conservancy (TNC), is located in Middle Township, Cape May County. A TNC access permit is required. Call (609) 861-0600 for permit applications, maps and site-specific regulations. Season dates and bag limits for Deer Management Zone 34 apply.

### Newark Watershed:

The Newark Watershed, located in Morris, Passaic and Sussex Counties, is open to deer hunting from September to December. A watershed access permit is required. Call (973) 622-4521 or (973) 697-2850 for access permit applications, maps and site-specific regulations. Season dates and bag limits for Deer Management Zone 3 and Deer Management Zone 6 (including Quality Deer Management restrictions) apply. 

# WIN A LICENSE FOR LIFE

## Sportsmen's CENTER

### LICENSE FOR LIFE!

Sportsmen's Center announce our best customer appreciation promotion ever, LICENSE FOR LIFE. Entry is unlimited and continues year round, enter by completing the form attached to every receipt. (NO PURCHASE TO SMALL).

One winner each year will be announced on 8/31.

The lucky winner of LICENSE FOR LIFE will be entitled to any hunting or fishing his or her license of choice sold by the Sportsmen's Center.

**Rt 130 Bordentown NJ 609-298-5300**

Hunting • Fishing • Safes  
Archery Pro Shop • Guns  
Ammo • Clothing • Footwear • Paintball  
Fly Fishing Pro Shop • Gun & Air Smithing  
Indoor Archery Range

Visit us on the web at  
[www.sportsmenscenter.com](http://www.sportsmenscenter.com)

At Sportsmen's Center we know you have a choice,  
thank you for making us yours.

## INDIAN CREEK

Commercial Shooting Preserve, LLC



Quality, private, upland bird hunting available on our 300-acre farm, conveniently located in Hardyston (Sussex Co.) NJ. Our commercial season runs Sept. 1st, '05–May 1st, '06, seven days a week. Guided hunts available on request.

### 2005/2006 SEASONAL MEMBERSHIPS NOW AVAILABLE

English Pointer and German Shorthaired Pointer Puppies and started dogs available this fall from the heart of our kennel of first class winning bird dogs. We also offer private lesson gun dog training and evaluation year round.



For information and reservations please visit

[www.birdmasters.com](http://www.birdmasters.com)

or contact **GARRY MALZONE**

Hardyston, NJ—**201-370-6960**



## BELLEPLAIN SUPPLY CO. GUN CENTER

BUY • SELL • TRADE

All Types of New & Used Firearms  
Filson, Carhartt, & Woolrich Clothing • LaCrosse Boots  
Black Powder Guns & Accessories • Browning Gun Safes  
Reloading Supplies • Smokeless & Black Powder • Ammo

OPEN SEVEN DAYS A WEEK

**(609) 861-2345**

Monday thru Friday - 8am to 6pm • Saturday and Sunday - 8am to 3pm  
346 Handmill Road, (Spur 550), Belleplain, New Jersey 08270

All Major Credit Cards Accepted



LARGEST  
FULL LINE



**BROWNING**

DEALER IN  
SOUTHERN  
NEW JERSEY



[www.BrowningGunCenter.com](http://www.BrowningGunCenter.com)

# 2005-06 Deer Hunting

## DEER CHECK STATIONS



### Hunters Helping the Hungry Needs Help with Meat-processing Costs

Hunters Helping the Hungry, an organization that has enabled hunters to donate more than

205,000 pounds of venison to feed New Jersey families since 1997, now needs some help from the public to cover the costs of professional meat processing.

The program, which donated more than 22,000 pounds of venison to food banks and charitable organizations last year alone, operates with limited funding. Butchers who participate in the Hunters Helping the Hungry program receive \$65 to process the donated deer. Currently, hunters who donate deer to feed the hungry must contribute at least \$25 toward that processing fee. If the program's funding runs out, hunters who donate deer will have to cover the entire cost for meat processing.

Hunters should check on funding availability before harvesting a deer intended for donation by visiting [www.huntershelpingthehungry.org](http://www.huntershelpingthehungry.org) or by calling the New Jersey Department of Environmental Protection's Division of Fish and Wildlife at (609) 292-6686.

Anyone interested in making a charitable contribution to offset the program's meat-processing costs may send a check payable to: **Hunters Helping the Hungry, P.O. Box 587, Lebanon, NJ 08833.**

### Participating Butchers Include:

#### John Person

Lebanon (908) 735-4646

#### Bishop's Market

Whitehouse Station (908) 534-9666

#### V. Roche & Sons

Whitehouse Station (908) 534-2006

#### County Meats of Washington

Washington, Warren County  
(908) 689-1266

#### Mark Godek Livestock

Marlboro (732) 462-3695

#### Hometown Butcher

967 Route 524 (Adelphia near Howell)  
(732) 462-8149.

#### Custer's Last Stand

2664 Route 57  
Stewartsville (908) 859-1725

Butchers will not accept donated deer during the Six-day Firearm Buck Season, from Dec. 5-10, so they can accommodate their regular customers.

Bank-A-Doe Check Station (See Deer Regulations Page 29)

Atlantic County	
Captain Howard's, 326 Philadelphia Ave., Egg Harbor City, (609) 965-7955	Open for All Deer Seasons
The Great Outdoors, 112 Rt. 50, Corbin City, (609) 628-3399	Open for All Deer Seasons
Muskett's Tavern, 343 W. White Horse Pike, Absecon, (609) 641-9823	Open for All Deer Seasons
N.E. Hand & Son, 6016 Main St., Mays Landing, (609) 625-4941	Open for All Deer Seasons
Nesco Package Goods, Rt. 542, Nesco, (609) 561-8704	Open for All Deer Seasons
Sugar Hill Sub & Deli, 153 Somers Pt. Rd. (Rt. 559), Mays Landing, (609) 625-0538	Open for All Deer Seasons
Ted's Taxidermy, 713 Rt. 40 (1/10 mile west of Rt. 54), Buena, (856) 697-8585	Open for All Deer Seasons
Bergen County	
Britt's Bait & Tackle, 41 River Rd., Oakland, (201) 651-0900	Open for All Deer Seasons
Targeteers Sporting Goods, 101 Rt. 46 West, Saddle Brook, (201) 843-7788	Open for All Deer Seasons
Burlington County	
Green Bank Inn, 1301 Rt. 542, Green Bank, (609) 965-5630	Open for All Deer Seasons
Hedger House, 4265 Rt. 563, Chatsworth, (609) 726-9006	Open for All Deer Seasons
Mighty Joe's Texaco, 1231 Rt. 206 South, Shamong, (609) 268-0303	Open for All Deer Seasons
Mike's Sporting Goods, 1414 Rt. 38, Hainesport, (609) 267-7978 Bank-A-Doe Check Station	Open for All Deer Seasons
New Gretna Munchies, Rt. 9 and South Maple Ave, New Gretna, (609) 296-8050	Open for All Deer Seasons
Nixon's General Store, Chatworth Rd. & New Rd. Jct, Tabernacle, (609) 268-9800	Open for All Deer Seasons
Pine Barren Stove & Sport Shop, Rt. 72, Chatsworth, (609) 726-1550	Open for All Deer Seasons
Schneider Supply, 390 Lakehurst Rd. (Rt. 530), Browns Mills, (609) 893-2323	Open for All Deer Seasons
Sportsmen's Center, U.S. Rt. 130 North, Bordentown, (609) 298-5300 Bank-A-Doe Check Station	Open for All Deer Seasons
Camden County	
Atco Sports, 177 Atco Ave., Atco, (856)767-9446	Open for All Deer Seasons
Creek Keepers, 1130 Black Horse Pike (Rt. 168), Blackwood, (856) 227-1923	Not open in December, January and February
Russell's PIC-II, 386 White Horse Pike, Ancora, (609) 567-9886	Open for All Deer Seasons
Sicklerville Hardware, 540 Williamstown Rd., Sicklerville, (856) 728-3800	Open for All Deer Seasons
Cape May County	
Belleplaine Supply & Gun Center, Hands Mill Rd., Belleplaine, (609) 861-2345	Open for All Deer Seasons
Fletcher's Corner, 212 South Rt. 47, Dias Creek, (609) 465-4949	Open for All Deer Seasons
Just Sports, 21 Mechanic St., Cape May Court House, (609) 465-6171	Open for All Deer Seasons
Cumberland County	
Big Daddy's Sports Haven, 595 Sherman Avenue, Millville, (856) 453-9009	Open for All Deer Seasons
Neighborhood Deli, jct. Cedarville & Buckshtum Rds., Millville, (856) 825-0044	Open for All Deer Seasons
Staas Stables Inc, 5109 Mays Landing Rd., Vineland, (856) 825-9099	Open for All Deer Seasons
Essex County	
The Bullet Hole, 78 Rutgers St., Belleville, (973) 759-3968	Open for All Deer Seasons
Gloucester County	
A&M Meats, Wolfert Station Rd., Mullica Hill, (856) 478-0370	Open for All Deer Seasons
Sportsmen's Outpost, Fries Mill Rd., Williamstown, (856) 881-3244	Open for All Deer Seasons
Hudson County	
Summit Indoor Archery Lanes, 443-445 Central Ave., Jersey City, (201) 653-1443	Open for All Deer Seasons
Hunterdon County	
Boan's Marine, 1296 Rt. 179, Mt. Airy, (609) 397-3311	Open for All Deer Seasons
Ralph Anthony Automotive (formerly Brown's), 1173 Rt. 579, Quakertown, (908) 735-7800	Open for All Deer Seasons
Carousel Deli & Bakery, Rt. 179 & Wertsville Rd. Jct., Ringoes, (908) 788-5180	Open for All Deer Seasons
Jugtown Mountain Campsites, 1074 Rt. 173 East, West Portal, (908) 735-5995	Open for All Deer Seasons
Lakeside Deli, 1878 Rt. 31 North, Clinton, (908) 638-3354	Open for All Deer Seasons
Milford Napa Auto Parts, 1002 Milford-Frenchtown Rd., Milford, (908) 996-2288	Open for All Deer Seasons
Person's Processing, 1221 Rt. 31 South, Lebanon, (908) 735-4646 Bank-A-Doe Check Station	No deer checked during Six-day Firearm
Sportsman's Rendezvous, 174 Rt. 31 North (in Sportman's Plaza), Flemington, (908) 788-5828	Open for All Deer Seasons
V. Roche & Sons, 9 High St., Whitehouse Station, (908) 534-2006 Bank-A-Doe Check Station	No deer checked during Six-day Firearm
Mercer County	
Mignella's Hillbilly Hall, N. Greenwood Ave., Hopewell, (609) 466-9856 Bank-A-Doe Check Station	Open for All Deer Seasons
Washington Crossing State Park, Phillips Farm, Harborton-Bear Tavern Rd., (609) 737-0623	Open December 5, 2005 ONLY
Middlesex County	
All Season's Sports & Taxidermy, 1938 Englishtown Rd. (Rt. 527), Jamesburg, (732) 521-1616 Bank-A-Doe Check Station	Open for All Deer Seasons
Sayreville Sportsman, 52 Washington Rd., Sayreville, (732) 238-2060	Open for All Deer Seasons
Monmouth County	
Bill and Ken's Taxidermy, 389 Rt. 79, Morganville, (732) 591-1116 Bank-A-Doe Check Station	Open for All Deer Seasons
Builder's General Supply Co., 15 Sycamore Ave., Little Silver, (732) 747-0808	Open for All Deer Seasons



### Bank-A-Doe Check Station (See Deer Regulations Page 29)

Clarksburg Inn, 465 Stagecoach Rd., Clarksburg, (609) 259-2558	Open for All Deer Seasons
Hometown Butcher, Howell, 967 Rt. 524 (Adelphia-Farmingdale Rd.), Adelphia, (732) 462-8149	
Sportsman's Shop, Rt. 35 & 3rd Ave., Neptune, (732) 775-9044	Open for All Deer Seasons
<b>Morris County</b>	
Billy Bob's Bait & Bow, 808 Rte. 15 South (in Hurdtown Plaza), Lake Hopatcong, (973) 663-3474	Open for All Deer Seasons
Bordy's Outdoors, 177 Columbia Tpke., Florham Park, (973) 966-8006 <b>Bank-A-Doe Check Station</b>	Open for All Deer Seasons
Bob Riley Auto Repair, 22 Merry Lane, E. Hanover, (973) 386-1805	Open for All Deer Seasons
New Vernon Coach & Motor Works, 960 Mt. Kemble Ave., Morristown, (973) 425-0700	Open for All Deer Seasons
R & S Sports Center, Rt. 46 & New St. Jct., Budd Lake, (973) 347-1944	Open for All Deer Seasons
The Country Sportsman, 63 Hamburg Tpke., Riverdale, (973) 839-7622	Open for All Deer Seasons
<b>Ocean County</b>	
Al's Grill & Cream Ridge Sporting Goods, 465 Rt. 539 (south of Rt. 537), Cream Ridge, (609) 758-0616	Open for All Deer Seasons
Brick Armory, 231C Chambers Bridge Rd. (N of Rt. 70 after Ocean Ice Rink), Brick, (732) 477-0800 <b>Bank-A-Doe Check Station</b>	Open for All Deer Seasons
Eastern Bait & Tackle, 507 Rt. 9 South, Bayville, (732) 237-0553	Open for All Deer Seasons
Grizz's Forked River Bait and Tackle, 232 North Main St. (Rt. 9), Forked River, (609) 693-9298 <b>Bank-A-Doe Check Station</b>	Open for All Deer Seasons
Just Plain Jane's, 581 E. Veterans Hwy. (Rt. 528), Jackson, (732) 928-9854	Open for All Deer Seasons
L & H Woods and Water, 403 Rt. 9, Waretown, (609) 242-1812	
Lucille's Country Cooking, 1496 Rt. 539, Warren Grove, (609) 698-4474	Open for All Deer Seasons
Scott's Bait & Tackle, 945 Radio Rd., Mystic Island, (609) 296-1300	Open for All Deer Seasons
Sportsman's Shanty, 420 Chandler Rd., Jackson, (732) 367-0033	Open for All Deer Seasons
Tip's Hardware, 218 Main St. (Rt. 9), West Creek, (609) 296-8477	Open for All Deer Seasons
Lakehurst Veterans of Foreign Wars Post 10061, 20 Union Ave., Lakehurst, (732) 657-6609	Open for All Deer Seasons
<b>Passaic County</b>	
Frank's Tackle, 81 Ringwood Ave. (Rt. 511), Wanaque, (973) 835-2966	Open for All Deer Seasons
D & D Sports + Marine, 1846 Rt. 23 North, West Milford, (973) 838-7522	Open for All Deer Seasons
Totowa Bait & Tackle, 10 Albion Ave., Totowa, (973) 956-0825	Open for All Deer Seasons
<b>Salem County</b>	
Bradway's Farm Market, Rt. 49 and Jericho Road, Quinton, (856) 878-0177	Open for All Deer Seasons
Buck Stop, 989 Alvine Road, Norma, (856) 794-1281	Open for All Deer Seasons
Joe & Sandi's Country Store, Main St., Canton, (856) 935-1414	Open for All Deer Seasons
North American Archery & Muzzleloader, Pole Tavern Circle, Monroeville, (856) 358-8180	Open for All Deer Seasons
Sam's Super Service, 290 Rt. 40 (jct. Rt. 553), Elmer, (856) 358-3488	Open for All Deer Seasons
<b>Somerset County</b>	
Gladpack Sunoco, 1 Pottersville Rd., Gladstone, (908) 234-1355 <b>Bank-A-Doe Check Station</b>	Open for All Deer Seasons
Millstone Sport Shop, 20 North River St., East Millstone, (908) 359-5713	Not open for February seasons
Neshanic Station Farm, Home & Garden Center, 101 Fairview Dr., Neshanic Station, (908) 369-5131 <b>Bank-A-Doe Check Station</b>	Open for All Deer Seasons
<b>Sussex County</b>	
Hainesville General Store, 283 Rt. 206 South, Hainesville, (973) 948-4280	Open for All Deer Seasons
Jumboland, Rte. 206, Branchville, (973) 948-6802	Open for All Deer Seasons
Layton Hotel, Rte. 560, Layton, (973) 948-0809	Open for All Deer Seasons
Little Red Deli, 1214 Rte. 23, Colesville, (973) 702-0909	Open for All Deer Seasons
Mastodon Sport Center, 195 Highland Lakes Rd. (Rt. 638), Highland Lakes, (973) 764-0200	Open for All Deer Seasons
Sig Borstad Archery & Hunting Supply, Old Rudetown Rd., McAfee, (973) 827-6527	Open for All Deer Seasons
Simon Peter Sport Company, 660 Rt. 206 South, Newton, (973) 786-5313	Open for All Deer Seasons
Swartwood Country Store, 911 Newton-Swartwood Rd., Newton, (973) 383-5470	Open for All Deer Seasons
Vernon Crossing Tire & Auto, Vernon Crossing Rd., Vernon, (973) 764-6171	Open for All Deer Seasons
<b>Union County</b>	
NJ Firearms Guild, 344 St. George Ave. (Rt. 27), Rahway, (732) 382-4066	Open for All Deer Seasons
<b>Warren County</b>	
57 West Deer Processing, 2664 Rt. 57 West, Stewartsville, (908) 859-1725	Open for All Deer Seasons
Country Meats of Washington, 51 S. Lincoln Ave., Washington, (908) 689-1266	Open for All Deer Seasons
County Line Sport Shop, 10 Rt. 46 West, Hackettstown, (908) 852-9897 <b>Bank-A-Doe Check Station</b>	Open for All Deer Seasons
Hi-Way Sport Shop, 253 Rt. 31 South, Washington, (908) 689-6208 <b>Bank-A-Doe Check Station</b>	Open for All Deer Seasons
The Dark Moon Tavern Co, 606 Rt. 519 (Hope-Johnsonburg Rd.), Johnsonburg, (908) 459-4555	Open for All Deer Seasons
RDJ Service Center, 275 Rt. 46, Vienna, (908) 637-4357	Open for All Deer Seasons
The Owl's Nest, 97 Rt. 519, Warren Glen, (908) 995-7903 <b>Bank-A-Doe Check Station</b>	Open for All Deer Seasons
Smitty's Liquor & Deli, Rte. 46, Columbia, (908) 475-5933	Open for All Deer Seasons
Warren County Outdoors, 128 Rt. 94, Blirstown, (908) 362-8666	Open for All Deer Seasons
YOJ Sports, 1077C Rt. 94, Marksboro, (908) 362-5540	Open for All Deer Seasons

Note: Stations not listed as open to check deer may be open for business.

## AMB DEER PROCESSING INC.

### Problems:

- Poor Quality—Processing by Amateurs
- High Cost
- Are you getting the cuts you want?
- Are you getting all your meat back?
- Are you getting the same deer back?\*

### The AMB Deer processing solution:

- Reasonable Price of \$75.00\*\*
- Skilled Professional Butchers
- Processed the way you request
- 90% Boned Out
- Properly wrapped & labeled for the freezer

**Woodbridge 732-750-5034**  
**Freehold 732-294-0983**

*Note: A deer tag is absolutely required for our processing service.*

**Offering Limited Smoked Products:**  
Hot Dogs—Smoked Polish Kielbasi  
Cold Cut Bologna—Italian Style  
Sausage—Smoked Hams

*\*Does not include smoked products \*\*150 lbs. and down*

## DEER PROCESSING

Professional Game Butcher

All products made on premises  
5 types of sausages  
5 special roasts  
2 kinds of bolognas

Standard Cut \$75.00  
Price list on-line

Visit Our Web site:

Deer Butchering Clinic  
Cabelas Hamburg, PA  
Garden State Sportsman  
Show Jan. 2006

[gamebutcher.com](http://gamebutcher.com)

1221 Route 31 South  
Lebanon, N J 08833  
908-735-4646

# 14TH ANNUAL GOVERNOR'S SURF FISHING TOURNAMENT

**October 2, 2005**  
at Island Beach State Park  
6:30 a.m.—1 p.m.

Open to Individuals of All Ages  
Prizes • Fishing Clinics  
Registration Required

Call NJ Division of Fish & Wildlife at  
(609) 748-4347 to request registration  
brochure or visit our Web site at:  
[www.njfishandwildlife.com](http://www.njfishandwildlife.com)

**Don't Miss a Day Full of Family Fun!**

## HUNT DEER, ELK & BUFFALO IN PA



Hunt our private herd Sept. thru April in the beautiful Rugged Allegheny Mtns with a 3000 ft. friendly altitude.

**Custom Design Your Guided Hunt**  
*Satisfaction Guaranteed!*

**Prices Starting At:**

Elk Cows:	\$1000	Buffalo:	\$1500
Elk Bulls:	\$2250	WT Bucks:	\$1500
Fallow:	\$1200	Red Stags:	\$2400
	Boars: \$500.00		

- \* Avoid stress & hassles of long-distance travel.
- \* Hunt in a safe & friendly atmosphere.
- \* Save costs, no drawing or license fee
- \* 2005/06 dates available with **World Class Service.**
- \* Contact us for Open House Dates.



Blue Knob PA

Phone: 1-877-ENJOY PA  
Office: 1-877-365-6972  
Lodge: 1-814-693-0189  
[www.majesticworldlodge.com](http://www.majesticworldlodge.com)



Blue Knob PA

*A Western World . . . Close to Home!*

# The Perfect Deer Feed!

**Deer love sweet potatoes!**

**PLUS...**  
most sweet  
potatoes are  
too large  
and heavy  
for a squirrel to remove.



Sweet potatoes, a locally available  
feed source that is economical,  
nutritious and very popular with deer.  
**Buy direct from the farmer!**



For more information, and local  
sources of New Jersey sweet potato  
farmers offering deer feed, contact:  
The New Jersey Sweet Potato Industry  
Commission at: 609-292-8854  
c/o Bill Walker.