

2005 Summary of Marine Fish Regulations

This is not the full law. Consult the Division of Fish and Wildlife for further details.

All persons are reminded that the statutes, code and regulations are the legal authorities.

Red text in regulations indicates a change for this year.

Change in Rules for Recreational Harvest of Summer Flounder, Scup and Black Sea Bass

The Department of Environmental Protection's Division of Fish and Wildlife informs anglers that rules for the recreational harvest of summer flounder (fluke), scup (porgy) and black sea bass have changed.

The summer flounder recreational season is now May 7 through Oct. 10, opening on a Saturday and ending on the Columbus Day holiday. The recreational minimum size remains at 16 1/2 inches and the possession limit remains at eight fish.

The scup recreational minimum size has been reduced to nine inches. The recreational season remains at Jan. 1 through Feb. 28 and July 1 through Dec. 31. The possession limit remains at 50 fish.

For black sea bass, the recreational season has been changed to Jan. 1 through Dec. 31. The recreational size limit remains at 12 inches and the possession limit remains at 25 fish.

These changes were implemented for New Jersey to stay in compliance with the Atlantic States Marine Fisheries Commission's management plans for summer flounder, scup and black sea bass. The new rules are aimed at providing adequate protection to these fish stocks while allowing New Jersey's saltwater recreational anglers to participate to the fullest extent possible in the summer flounder, scup and black sea bass fisheries.

New Jersey regulations apply to all fish species when they are possessed in state waters or landed in New Jersey regardless of where they are caught.

Resource Information

Anyone who takes fisheries resources may be required to provide information on the species, number, weight or other information pertinent to management of resources.

Methods of Fishing

No person shall take, catch, kill or attempt to take, catch or kill any fish within the marine waters of the state by any means except in the manner commonly known as angling with hand line or rod and line unless specifically provided for by statute or regulation.

Wanton Waste Prohibited

Fish of any species which are purposely killed shall become part of the angler's daily possession limit and shall not be returned to the water from which they were taken. This does not apply to fish which are released alive and subsequently die.

Spear Fishing

Spear fishing can be conducted by means of a spear, harpoon or other missile while completely submerged in the marine waters of the state for any species, except lobster.

Persons who fish with a spear for species with size limits are reminded that it is their responsibility to ensure the fish meets the minimum size limits before being killed or injured.

Prohibited Species

It is illegal to take, possess, land, purchase, or sell any of the following species:

Atlantic Sturgeon	Shortnosed Sturgeon
Basking Shark	Whale Shark
Bigeye Sand Tiger Shark	White Shark
Sand Tiger Shark	

Sea Turtles & Marine Mammals

It is illegal to intentionally molest, kill or possess sea turtles or marine mammals, or to possess any part thereof.

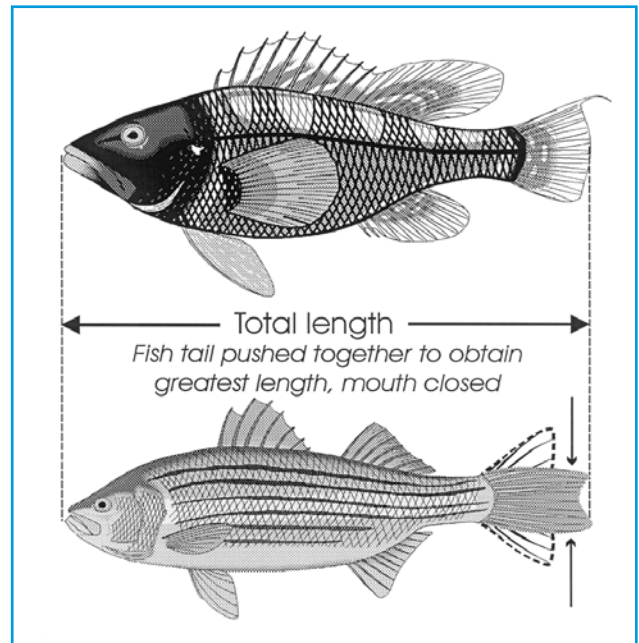
Finfish

Filleting

The filleting at sea of all fish with a size limit is prohibited. Party boats may fillet fish at sea if they obtain a Special Fillet Permit. Applications may be obtained from the Marine Fisheries Administration.

Black Sea Bass

The minimum size limit for black sea bass is 12 inches measured along the midline from the snout to the end of the central portion of the tail, **not to include the tail filaments**. The possession limit is 25 fish with an open season of Jan. 1 through Dec. 31.



Bluefish

The possession limit for bluefish is 15 fish. Bluefish taken with hook and line may be sold only from June 16 through Aug. 7 **and only** if the harvester is in possession of a valid commercial bluefish permit issued for his or her vessel by the National Marine Fisheries Service (978) 281-9370. Any harvester in possession of a valid commercial bluefish permit may possess more than 15 bluefish per day, but only during the commercial season of June 16 through Aug. 7.

Black drum

The minimum size limit for black drum is 16 inches in total length and the daily possession limit is 3 fish. There is no closed season for black drum.

Red Drum

The red drum possession and size limits are one fish no less than 18 inches and not greater than 27 inches.

Shark

The minimum size limit for any species of shark, *except dogfish* (see note below) is 48 inches total length.

Sharks — Prohibited Species

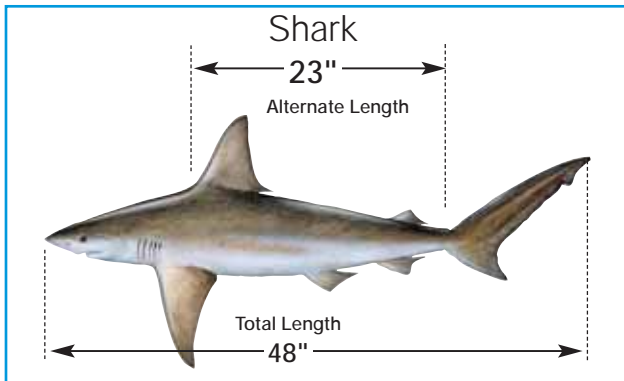
basking shark	sand tiger shark
whale shark	bigeye sand tiger shark
white shark	

NOTICE

Attention Winter Flounder Anglers

The 2005 Winter Flounder regulations are expected to change in August for the fall season. It's important for anglers to stay current with the regulations, so check for Winter Flounder regulation updates this summer on Fish and Wildlife's 24-hour marine hotline (609) 292-2083, our Web site (www.njfishandwildlife.com) and in your area newspaper.

The fins may not be removed from a shark, except after fishing has ceased and such shark has been landed. A shark may be eviscerated and the head and tail removed prior to landing, provided that the alternate length as measured from the origin of the first dorsal fin to the pre-caudal pit (located just forward of the origin of the upper lobe of the tail fin) is not less than 23 inches in length. The possession limit is two shark per vessel.



Note: To differentiate sharks from dogfish — the smooth dogfish has flat, tiny teeth; the spiny dogfish has strong, dorsal spines, shorter than, and in front of, the dorsal fins. Neither is present in sharks.

Striped Bass (includes Hybrid Striped Bass)

The possession limit for striped bass/hybrid striped bass is two fish. One fish must be greater than or equal to 24 inches to less than 28 inches (slot fish) while the other fish must be 34 inches or greater. It does not matter which fish is harvested first. Anglers participating in the Striped Bass Program Bonus Program (see next page) may possess an additional striped bass at 28 inches or greater. **Anglers do not need to harvest a slot fish prior to taking a bonus fish.**

It is illegal to take, catch or kill any striped bass from or in any marine waters of this state, by means of a net of any description, or by any methods other than angling with a hook and line or by spear fishing.

It is illegal to possess any striped bass, or parts of a striped bass from which the head and/or tail has been removed (other than while in preparation or being served as food), which is less than the legal minimum size.

Harvest and possession of striped bass from federal waters (outside three miles) is prohibited.

Sale of striped bass in New Jersey is prohibited.

Closed Seasons

No person may take, attempt to take, or have in possession any striped bass from the following closed waters:

Jan. 1–Feb. 28 — All waters except the Atlantic Ocean from 0-3 miles offshore. All inlets and bays are delineated from ocean waters by a Colregs Demarcation line.

April 1–May 31 — Delaware River & Bay and their tributaries from the upstream side of the Calhoun St. bridge downstream to and including the Salem River and its tributaries.

Non-offset circle hooks are required to reduce striped bass bycatch mortality while fishing with natural bait during the striped bass spawning area closure within the Delaware River and its tributaries. This restriction does not apply to hook sizes smaller than size two.

Striped Bass Bonus Program

The popular Striped Bass Bonus Program (SBBP) reopens in 2005. This year's program rewards past anglers' participation while bringing in new participants via a lottery system. The program is free.

Striped bass recreational size limits allow anglers to take one fish at 24 inches to less than 28 inches and one fish 34 inches or greater.

Under the 2005 SBBP, participants will be able to take an additional striped bass at 28 inches or greater subject to the following:

1. The angler must apply for and receive the fish possession cards in advance of attempting to take a bonus fish.
2. Anglers must comply with all aspects of the regulations. A guide to these regulations is provided with the fish possession cards.

Guide to the 2005 Striped Bass Bonus Program (SBBP):

- **20,000** bonus cards will be issued in 2005
- **25 percent allocated to:** party and charter boats participating in the 2004 SBBP who returned their logbooks by 3/28/05
- **18 percent allocated to:** individual anglers participating in the 2004 SBBP who returned their voluntary log information by 3/28/05
- **57 percent allocated to:** individual anglers successfully chosen in the 2005 SBBP lottery

The lottery application deadline was May 31, 2005. Just prior to the season opening, successful SBBP participants will receive two non-transferable cards for the bonus fish taken, one card good per day. No replacement cards will be issued.

The SBBP season will start on or around Sept. 1, 2005; watch for news release updates or visit our Web site at www.fishandwildlife.com for additional information. Next year's program status updates also will be announced through those communication avenues in early in 2006.

Summer Flounder (Fluke)

The possession and minimum size limit for summer flounder is 8 fish at 16 1/2 inches and an open season from **May 7 to Oct. 10**.

Tautog (Blackfish)

The minimum size limit for tautog is 14 inches. There is a four fish possession limit from Jan. 1 through May 31, and a one fish possession limit from June 1 through Nov. 14 and an eight fish possession limit from Nov. 15 to Dec. 31.

Weakfish (Gray & Spotted Seatrout)

The possession and minimum size limit for weakfish is 8 fish at least 13 inches in length.

Winter Flounder

The minimum size limit for winter flounder is 11 inches. For winter flounder the open seasons are March 1–May 31 and Sept. 15–Dec. 31. There is no possession limit. In Aug. changes are expected to be announced for the fall season. **See Notice at top of page.**

Additional Marine Fishing Regulations

See pages 11, 12 and 13 for the clip out reference pages.

Bait Fish

No license is required for the taking of baitfish for personal use with the following gear:

1. Dip nets 24 inches diameter or less for the taking of herring for live bait.
2. Bait seines 50 feet long or less.
3. Cast nets 20 feet in diameter or less.
4. Lift or umbrella nets four feet square or less.
5. Not more than five killipots.
6. Not more than two miniature fykes or pots for the taking of eels for bait.

Fish taken in this manner may not be sold or used for barter unless a commercial bait net license is in possession.

No person shall take more than 35 alewife or blueback herring in aggregate per day by hook and line or the above listed gear.

No person shall take or attempt to take fish by any means from the Deal Lake flume, Lake Takanasse spillway or Wreck Pond spillway on any Monday, Wednesday or Friday during the months of April and May.

2005 Summary of Shellfish Regulations

Crustaceans

American Lobster

The legal possession size of whole lobsters, measured from the rear of the eye socket along a line parallel to the center line of the body shell to the rear of the body shell, shall be not less than 3-3/8 inches. Lobster parts may not be possessed at sea or landed.

The possession limit is 6 lobsters per person. No person shall possess any lobster with eggs attached or from which eggs have been removed or any female lobster with a v-notched tail, as illustrated above.

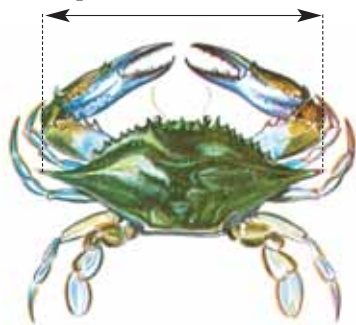
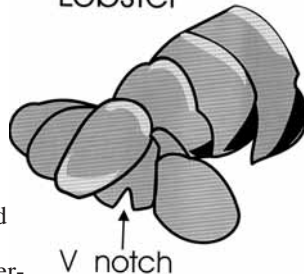
The use of spears, gigs, gaffs or other penetrating devices as a method of capture for lobsters is prohibited. A recreational lobster pot permit and fish pot license is required to use pots or traps to capture lobsters. For details call (609) 748-2020.

Lobsters taken recreationally may not be sold or offered for sale.

Crabs

- Crabs may be taken recreationally with hand lines, manually operated collapsible traps or scoop nets without a license. A non-commercial crab pot license is required for the use of not more than two (2) non-collapsible Chesapeake-style crab pots (see illustration on page 15) or two (2) trot lines to harvest crabs. See page 15 for the non-commercial crab pot license application or stop by coastal bait and tackle shops.
- It is illegal to harvest or possess more than one bushel of crabs per day per person or offer for sale any crabs without having in your possession a valid commercial crabbing license.
- Minimum size of crabs that may be harvested (measured from point to point of shell) are as follows:
 - Peeler or shedder crab—3 inches
 - Soft crab—3 1/2 inch
 - Hard crab—4 3/4 inches (for sale)
 - Hard crab—4 1/2 inches (possession)
- All female crabs with eggs attached and all undersized crabs shall be returned to the water immediately.
- Recreational trot lines shall not exceed 150 feet in length with a maximum of 25 baits.
- All pots and trot lines shall be marked with the identification number of the owner.
- All crab pots must be tended at least once every 72 hours.
- No floating line may be used on any crab pot or crab pot buoy.
- No crab pot shall be placed in any area that would obstruct or impede navigation or in any creek less than 50-feet wide.
- Only the owner, his agent or a law enforcement officer may raise or remove contents of a legally set fishing device.

Lobster



Measure crabs point to point

- Crabs taken with a bait seine may be retained for personal use only if the fisherman possesses a bait net license, and may not be bartered or sold unless the fisherman possesses a commercial crab license.
- No crabs may be harvested from the Newark Bay Complex. For more information, see Health Advisory on page 23.
- Crab Pot/Trot Line seasons: Delaware Bay and tributaries — April 6 to Dec. 4; all other waters — March 15 to Nov. 30. The following waters are closed to the use of crab pots and trot lines: Cumberland Co.: Cohansey River and creeks named Back, Cedar, Nantuxent, Fortesque, Oranoken and Dividing; Cape May Co.: West and Bidwell Creeks and the Cape May Canal; Atlantic Co.: Hammock Cove (Dry Bay); Ocean Co.: on east shore of Barnegat Bay, that area of Sedge Islands Wildlife Management Area enclosed by a line drawn from the northern bank of Fishing Creek on Island Beach State Park to the northern tip of the Sedge Islands (Hensler Island), then south from point to point along the western side of the Sedge Islands WMA and terminating on the most southwestern point of Island Beach State Park.
- Fish and Wildlife will issue a non-commercial crab dredge license for the harvest of not more than one bushel of crabs during the crab dredge season. Crabs so taken may not be sold or offered for barter. There is a fee of \$15 for this non-commercial crab dredge license. Call the Marine Fisheries Administration at (609) 748-2040.

Notice: All non-collapsible Chesapeake-style crab pots (see illustration on page 15) must be constructed to include a biodegradable panel designed to create an opening to allow crabs and other organisms to escape if the pot is lost or abandoned. All non-collapsible Chesapeake-style crab pots set in any manmade lagoon or any water body less than 150 feet wide must also include a turtle excluder device inside all pot entrance funnels.

Horseshoe Crabs

The harvest of horseshoe crabs is prohibited without a permit.

Mollusks


- All persons must be licensed to harvest any hard clams, soft clams, surf clams and oysters.
- It is illegal to harvest clams, oysters and mussels from condemned waters, even for bait purposes. It is also illegal to harvest surf clams from beaches adjacent to water classified as condemned. Water classification charts are available from license agents, any state shellfish office or Marine Police Station. Charts are updated annually.
- Shellfish harvesting is prohibited before sunrise, after sunset and on Sundays.
- Harvesting of clams, oysters, bay scallops and mussels on public grounds is restricted to the use of hand implements.
- It is illegal to harvest shellfish from leased grounds. These grounds are delineated by stakes or buoys set by the lease holder. Charts of the leases may be examined at the Nacote Creek or Bivalve Shellfish Offices during regular business hours.

Hard Clams

1. No person shall harvest more than 150 clams per day unless such person is a holder of a commercial clam license. Only certified shellfish dealers may purchase clams from commercial harvesters. All persons selling clams commercially must tag each container listing date of harvest, name and address of the harvester and the waters from which the shellfish were harvested.
2. A non-resident recreational license is valid only during the months of June, July, Aug. and Sept..
3. Anyone engaged in any clamming activity with someone holding a commercial clam license must also possess their own commercial clam license.
4. It is illegal to dredge hard clams. Hand implements are the only legal harvest methods.
5. The minimum size of hard clams that may be harvested is 1 1/2 inches in length. Clams less than 1 1/2 inches in length must be immediately returned to the bottom from which they were taken.
6. It is illegal to harvest shellfish on Sunday except in the seasonal waters of the Navesink and Shrewsbury rivers between Nov. 1 and April 30.



Oysters

1. Oysters may be sold only to certified dealers.
 2. It is illegal to dredge oysters on public grounds. All harvesting on public grounds is restricted to the use of hand implements.
- 
3. Shells taken in the process of harvesting oysters must be culled from the live oysters and returned immediately to the area from where they were taken.
 4. Specific seasons and regulations exist for oyster beds in Great Bay, Delaware Bay, the Mullica, Great Egg Harbor and Tuckahoe rivers. Check with appropriate shellfish offices for detailed regulations.
 5. One license covers recreational and commercial oystering.

New Jersey Division of Fish & Wildlife 2005 Marine Recreational Fishing Seasons, Minimum Size & Possession Limits

Regulations in **red** are new this year.

Species	Open Season	Minimum Length	Harvest & Possession Limit (per person unless noted)
American Eel	No Closed Season	6"	50
Black Drum	No Closed Season	16"	3
Black Sea Bass	Jan. 1–Dec. 31	12" Excluding tail filaments	25
Bluefish	No Closed Season	No Minimum	15
Cobia	No Closed Season	37"	2
Cod	No Closed Season	21"	No Limit
Haddock	No Closed Season	21"	No Limit
King Mackerel	No Closed Season	23"	3
Pollock	No Closed Season	19"	No Limit
Porgy (Scup)	Jan. 1–Feb. 28 July 1–Dec. 31	9"	50
Red Drum	No Closed Season	18"	1 not greater than 27"
River Herring	No Closed Season	No Limit	35
Shad	No Closed Season	No minimum	6
Shark^a except prohibited species ^b	No Closed Season	48"	2 per vessel
Spanish Mackerel	No Closed Season	14"	10
Striped bass or hybrid striped bass			
—Del. River & tributaries (Calhoun St. bridge to Salem River & tributaries)	Mar. 1–Mar. 31 and June 1–Dec. 31	34" AND Greater or equal to 24" but less than 28"	1
—Del. River & tributaries (upstream of Calhoun St. bridge)	Mar. 1–Dec. 31		
—Atlantic Ocean ^c 0-3 miles from shore	No Closed Season		
—All other waters	Mar. 1–Dec. 31		
Summer Flounder	May 7–October 10	16 1/2"	8
Tautog	Jan. 1–May 31	14"	4
	June 1–Nov. 14	14"	1
	Nov. 15–Dec. 31	14"	8
Weakfish	No Closed Season	13"	8
Winter Flounder *	Mar. 1–May 31 Sept. 15–Dec. 31	11"	No Limit
No species of fish with a minimum size limit listed above may be filleted or cleaned at sea (except striped bass if fillet is at least 28" long). (Party boats licensed to carry 15 or more passengers may apply for a permit to fillet the above species, except striped bass, at sea.)			
Blue Crab			
—peeler or shedder	No Closed Season ^d	3"	1 bushel
—soft	No Closed Season ^d	3 1/2"	
—hard	No Closed Season ^d	4 1/2"	
Lobster (carapace length)	No Closed Season	3 3/8"	6
Hard Clam — license required	No Closed Season	1 1/2"	150 clams

a Not including dogfish: see description on page 9.

b Prohibited Sharks Species: basking shark, whale shark, white shark, sand tiger shark, bigeye tiger shark

c **Atlantic Ocean greater than three miles from shore: harvest and possession prohibited.**

d Unless using non-collapsible, Chesapeake-style crab pots. See sections on crab pots, pages 10 and 15.

*See **NOTICE**, page 9, anticipating winter flounder regulation changes.

ATTENTION ANGLERS

2005 NJ Minimum Size, Possession Limits & Seasons

Fish are measured from tip of snout to tip of tail (except Black Sea Bass). Cleaning or filleting of fish with a minimum size limit while at sea is prohibited. **Red** text indicates a change this year.



Weakfish
8 Fish at 13"



Summer Flounder (Fluke)
8 Fish at 16 1/2"
Open Season **5/7-10/10**



Tautog 14"
4 Fish—1/1-5/31 • 1 Fish—6/1-11/14
8 Fish 11/15-12/31



25 Fish at 12"
Open Season **1/1-12/31**
Black Sea Bass



Bluefish
15 fish no minimum size

PROHIBITED SPECIES

It is illegal to take, possess or land any of the following species:

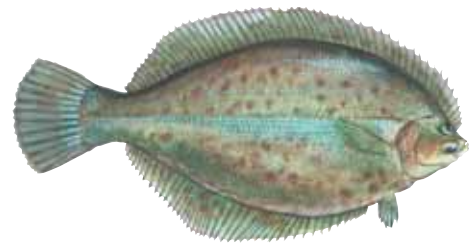
**BIGEYE SAND TIGER SHARK
SHORTNOSE STURGEON
ATLANTIC STURGEON
SAND TIGER SHARK
BASKING SHARK
WHALE SHARK
WHITE SHARK**

OTHER SPECIES

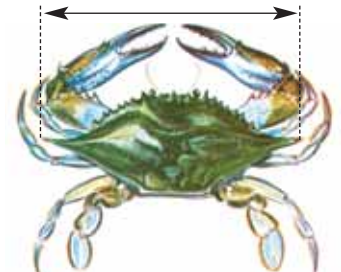
	Possession Limit	Total Length
American Eel	50	6"
Cobia	2	37"
Cod	No Limit	21"
Haddock	No Limit	21"
King Mackerel	3	23"
Pollock	No Limit	19"
River Herring	35	No Limit
Lobster	6	3 ³ / ₈ " (Carapace Length)



Striped Bass or Hybrid Striped Bass
1 fish at **34" or greater**
1 fish at 24" or greater, but less than 28"
Del. River & tribs. (Calhoun St. bridge); Trenton, to Salem River & tribs. Open 3/1-3/31 & 6/1-12/31
Atlantic Ocean: (0-3 miles from shore), no closed season; (greater than 3 miles from shore) closed year round
All other marine waters, open 3/1-12/31



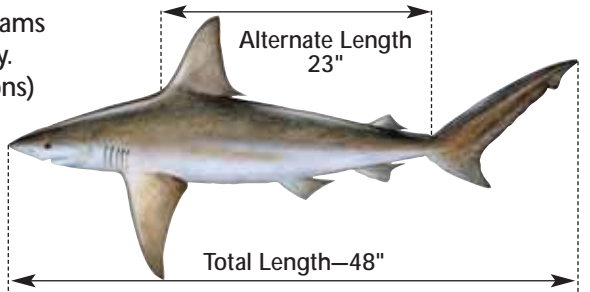
Winter Flounder*
11" • Open Seasons: 3/1-5/31; 9/15-12/31



Blue Crab (point to point)
Peeler or Shedder—3"
Soft—3 1/2" • Hard—4 1/2"
recreational limit—one bushel



Hard Clam
1 1/2"
recreational limit—150 clams
No harvest on Sunday.
(See pg. 11 for exceptions)



Shark
2 Fish per vessel

*Regulation changes anticipated by fall season. See Notice page 9.

New Jersey Marine Fish Identification



Black Drum
3 Fish at 16"



Northern Kingfish



Atlantic Bonito



Scup (Porgy)
50 Fish at 9"

Open Season 1/1-2/28 and 7/1-12/31



Northern Sea Robin



White Perch



Red Drum

1 Fish at least 18" but not greater than 27"



Spiny Dogfish



Northern Puffer



Atlantic Mackerel



American Shad
6 Fish Limit



Smooth Dogfish



Oyster Toadfish



Spanish Mackerel
10 Fish at 14"



Sand Tiger Shark



Atlantic Croaker



Atlantic Cod
21" Size Limit



Sandbar Shark

Shellfish and Non-Commercial Crab Pot License Information

Prior to harvesting any shellfish, be certain to consult the Shellfish Growing Water Classification Charts published by the Division of Watershed Management, available at any shellfish license agent, state shellfish office or Marine Police Station, or call (609) 748-2000.

- **Residential recreational clam:** \$10.
- Harvest limit of 150 hard, soft, surf clams (in aggregate) per day. Sale of catch prohibited.
- **Non-resident recreational clam:** \$20. Harvest limit of 150 hard, soft, surf clams per day. Sale of catch prohibited. License valid only during the months of June, July, August and September.
- **Juvenile recreational clam:** \$2. For persons under 14 years of age. Subject to same restrictions as resident or nonresident adult recreational license holders.
- **Commercial clam:** \$50. Unlimited harvest. Clams may be sold to certified dealers only.
- **Oyster, commercial or recreational:** \$10. Unlimited oyster harvest. Oysters may be sold to certified dealers only.
- **Senior Citizen recreational:** FREE. NJ resident 62 years of age or older for clam/oyster license. Harvest limit of 150 clams per day. Unlimited oyster harvest. Sale of clams or oysters prohibited.

There is a \$2 application fee for the Senior Citizen Recreational Shellfish License.

- **Disabled veterans:** May apply for free recreational clamming or crab pot licenses at the following Division offices:
Trenton Office
Pequest Hatchery & Ed. Ctr.
Nacote Creek Research Station
Northern Region Office
Central Region Office
Southern Region Office
- **Bay Scallops:** No license required. Scallops may be harvested only from approved waters.
- **Mussels:** No license required. Mussels may only be harvested from approved waters.
- **Recreational crab pot license applications:** Are also available on our Web site: www.njfishandwildlife.com

NOTE: When obtaining a license from a license agent, an additional \$1 fee is charged.

Shellfish and Non-Commercial Crab Pot License Agents

(For over-the-counter sales only)

- # Sell only clam licenses
- + Also sells oyster licenses
- * Sells only Rec. Crab Pot licenses
- **Does not sell Commercial Clam licenses

ATLANTIC COUNTY

- Egg Harbor True Value, 208 Philadelphia Ave., Egg Harbor (609) 965-0815
- +Nacote Creek Shellfish Office, Route 9, Mile 51, Port Republic (609) 748-2021
- +North Point Marina, 1225 E. Shore Dr., Brigantine (609) 266-3939
- +Steve's Deepwater Marina, 5012 Ocean Heights Ave., E.H. Twp. (609) 927-0461
- +Up The Creek Marina, 139 E. Faunce Landing Rd., Absecon (609) 272-9252
- #Zeus Sporting Goods, 6679 Black Horse Pike, EH Twp. (609) 646-1668

CAPE MAY COUNTY

- Avalon Hodge Podge, 2389 Ocean Dr., Avalon (609) 967-3274
- Capt. Tate's Tackle, Box, 450 No. Route 47, Cape May CH (609) 861-4001
- +City Hall, 9th & Asbury Ave., Ocean City (609) 399-6111
- +Just Sports, 21 W. Mechanic St., Cape May CH (609) 465-6171
- **Red Dog B&T, 367 43rd St., Sea Isle City (609) 263-7914
- +Upper Twp. Municipal Bldg., 2100 Tuckahoe Rd., Petersburg (609) 628-2011

CUMBERLAND COUNTY

- +Bivalve Shellfish Office, 6959 Miller Ave., Port Norris (856) 785-0730
- +Shire Products, Inc., 389 S. Lincoln Ave., Vineland (856) 692-3646

GLOUCESTER COUNTY

- Washington Twp. Parks, Hurfville-Cross Keys Rd., Turnersville (856) 589-6427

MERCER COUNTY

- +NJ Div. Fish and Wildlife, 501 E. State St., 3rd Fl., Trenton (609) 292-2965

MIDDLESEX

- Sayreville Sportsman Shop, 52 Washington Ave., Sayreville (732) 238-2060

MONMOUTH COUNTY

- Brielle Tackle, 800 Ashley Ave., Brielle (732) 528-5720

OCEAN COUNTY

- American Sportsman, 857 Mill Creek Rd., Manahawkin (609) 597-4104
- Barnegat Boat Basin, 491 E. Bay Ave., Barnegat (609) 698-8581
- Bruce & Pat's B&T Shop, 317 Long Beach Blvd., Surf City (609) 494-2333
- *Cedar Cove Marina, 458 S. Green St., Tuckerton (609) 296-2066
- **Downe's Bait & Tackle, 287 Brennan Concourse, Bayville (732) 269-0137
- Eastern Bait & Tackle, 507 Route 9, Bayville (732) 237-0553
- Fishermen's Headquarters, 280 W. 9th St., Ship Bottom (609) 494-5739
- Grizz's Forked River B&T, 232 N. Main St., Forked River (609) 693-9298
- Lacey Marine, 308 Rt. 9, So. (609) 693-0151
- L & H Woods and Water, 403 Route 9, Waretown, NJ (609) 242-1812
- **Maritime Marina, 470 S. Green St., (609) 294-9090
- Mole's Bait & Tackle, 403 Route 9, Waretown (609) 693-3318
- Pell's Fish & Sport Shop, 335 Mantoloking Rd., Bricktown (732) 477-2121
- **Wheel House Marina, 267 24th Ave., So. Seaside Park (732) 793-3296

SOMERSET COUNTY

- Efinger's Sporting Goods, 513 W. Union Ave., Bound Brook (732) 356-0604



We Are Your Source For
CRAB TRAPS ■ Eel & minnow traps.
Holding cages & supplies.

E-Z Catch® Products are proudly made in the USA & available at better Bait & Tackle stores everywhere!

Visit us at www.e-zcatch.com
for a list of retailers near you or email us at PatScage@msn.com.
Dealer & commercial inquiries welcome.



J.F. GRIFFIN
PUBLISHING
specializing in state regulations

Space is still available in the 2005 Hunting Digest!

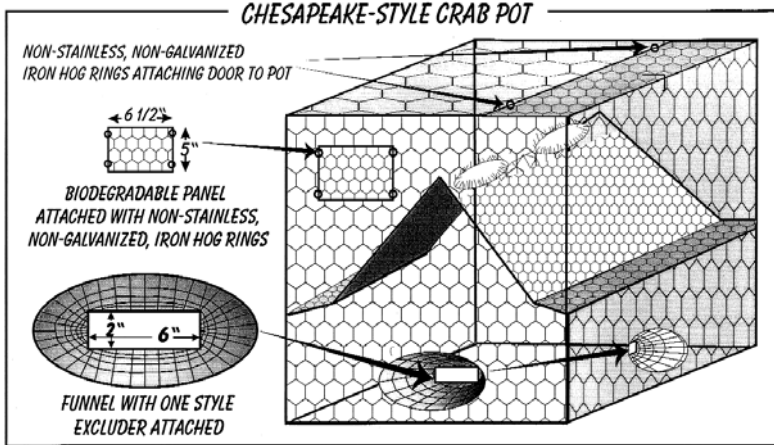
for more information contact

J.F. Griffin Publishing at

413-884-1001ext.6 or email: ads@jffgriffin.com



Terrapin Excluders and Biodegradable Panels Are Required on Chesapeake-Style Crab Pots



Users of non-collapsible, Chesapeake-style crab pots should be aware that all pots set in any body of water less than 150 feet wide at mean low tide or in any manmade lagoon MUST include diamondback terrapin excluder devices. In addition, all non-collapsible, Chesapeake-style crab pots set in any body of water MUST include biodegradable panels. These crab pot modifications will help reduce the unintentional drowning of terrapins and allow for escapement of these and other species in the event that pots are lost or abandoned. Terrapin excluder devices must be no larger than two inches high by six inches wide and securely fastened inside each funnel entrance. Biodegradable panels must measure at least six and one-half inches wide by five inches high and be located in the upper section of the crab pot. The panel must be constructed of, or fastened to the pot with wood lath, cotton, hemp, sisal or jute twine not greater than 3/16" diameter, or non-stainless steel, uncoated ferrous metal not greater than 3/32" diameter. The door or a side of the pot may serve as the biodegradable panel ONLY if it is fastened to the pot with any of the material specified above. Crabbers should be aware that ALL non-collapsible, Chesapeake-style crab pots MUST be licensed and marked with the gear identification number of the owner. For crab pot license information and regulations, see the regulations on page 10 and license agents on page 14.

NJ Division of Fish and Wildlife, Marine Fisheries Administration Application for 2005 Non-Commercial Crab Pot/Trot Line License

You must complete both left and right portions of this application.

A license is required for the recreational use of non-collapsible, Chesapeake-style crab pots or trot lines. See Summary of Marine Fish and Shellfish Regulations.

New Jersey Division of Fish and Wildlife is now collecting information on the recreational blue crab fishery coastwide, data which has not been gathered for over 30 years. Recreational crab pot license holders are requested to complete the Voluntary Recreational Blue Crab Pot Report form included with your license. Completing this form is not required to receive a license.

Information you are asked to record includes the number of crabbing trips, locations crabbed, number of blue crabs caught, the number kept and other details. Mail completed forms by December 31 to the Nacote Creek Research Station address on the form. Crabbers can also download a report form from Fish and Wildlife's Web site at www.njfishandwildlife.com.

Data collected with your assistance will enable Fish and Wildlife to assess recreational crabbing in New Jersey.

This application is also available on our Web site at www.njfishandwildlife.com.

Name: _____ Date: _____
 Address: _____
 City: _____ State: _____ Zip: _____
 Phone: _____
 Date of Birth: _____ Height: _____ Weight: _____
 Eye Color: _____ Hair: _____ Sex: _____
 Signature: _____

Application fee \$2.00. Please make check or money order payable to: NJ Fish & Wildlife. Completed applications may be sent to any of the following offices:

- NJ F&W - Crab Pot Lic.: P.O. Box 418, Port Republic, NJ 08241 • (609) 748-2021
- NJ F&W - Crab Pot Lic.: P.O. Box 432, Port Norris, NJ 08349 • (856) 785-0730
- NJ F&W - Crab Pot Lic.: P.O. Box 400, Trenton, NJ 08625-0400 • (609) 292-2965

Supplemental License Application-Child Support

To receive a Child Support Certification Number for use on all Fish and Wildlife licenses, go to: www.njfishandwildlife.com/child_support_info.htm. Write your assigned number here: _____

Or Complete this form:

Calendar Year: 200__
 License _____ (license type) _____ (number)

*Social Security Number: _____ - _____ - _____

Please certify, under penalty of perjury, the following:

- Do you currently have a child support obligation?
 Yes No
 (1) If "Yes," are you in arrears in payment of said obligation?
 Yes No
 (2) If "Yes," does the arrearage match or exceed the total amount payable for the past six months?
 Yes No
- Have you failed to provide any court-ordered health insurance coverage during the past six months?
 Yes No
- Have you failed to respond to a subpoena relating to either paternity or child support proceeding?
 Yes No
- Are you the subject of a child support-related arrest warrant?
 Yes No

In accordance with N.J.S.A. 2A:17-56.44d, an answer "Yes" to any of the questions (1) through d. will result in a denial of licensure or certification. Furthermore, any false certification of the above may subject you to a penalty, including but not limited to, immediate revocation or suspension of licensure or certification.

Date _____
 Applicant's Name (please print) _____
 Applicant's Signature _____

* Pursuant to N.J.S.A. 2A:17-56.44e of the New Jersey Child Support Enforcement law, the Division of Fish and Wildlife is required to obtain your Social Security Number. Fish and Wildlife is further obligated to provide your Social Security Number to the Probation Division or other agency responsible for child support enforcement.

This supplemental application must be completed and returned with your license application. No license will be issued without including this completed form.