

Regulations for use of wildlife management areas (WMAs) are established by the Division of Fish and Wildlife with penalties of not less than \$50 nor more than \$200.

Information on these regulations and permit applications may be obtained by writing to New Jersey Division of Fish and Wildlife, PO Box 400, Trenton, NJ 08625-0400.

Fish and Wildlife may revoke any permit or other authorization issued for violation or due cause.

The following are prohibited: camping, swimming, picnicking, dumping, cutting or damaging vegetation, alcoholic beverages and fires.

Restricted Hours

Wildlife Management Areas are closed from 9 p.m. until 5 a.m. unless engaged in lawful hunting, fishing or trapping activities.

Special permission may be granted for Fish and Wildlife approved activities.

Motor Vehicles

No person shall operate an unregistered vehicle on roads under the control of the Division of Fish and Wildlife. All motor vehicles are restricted to established public roads and parking areas.

The use of dog sleds and dog carts, off-road vehicles, ATVs, trailbikes or snowmobiles is prohibited on all Wildlife Management Areas unless authorized by Fish and Wildlife.

Target Practice

Only archery, shotgun, muzzleloading shotgun, muzzleloading rifle and .22 caliber rimfire rifle shooting is allowed in designated hunter training ranges according to posted regulations at the training area. Other target practice is allowed only with permission from the Division of Fish and Wildlife.

Field Trials

Permits for use of Wildlife Management Areas for running of field trials may be granted by Fish and Wildlife. Apply for a permit by calling (609) 259-2132.

Dog Training and Exercising

Dogs may be exercised or trained on any WMA from Sept. 1 to April 30. All dogs must be properly licensed. Select WMAs with designated dog training areas also permit dogs to be exercised or trained from May 1 to Aug. 31. For more information, see the hunting issue of the *New Jersey Fish and Wildlife Digest* or call (609) 984-0547.

Outboard Motors

Only electric motors are allowed on freshwater lakes and ponds owned by New Jersey Division of Fish and Wildlife with the exception of Union Lake, where outboard motors not exceeding 9.9 hp. may be used. On Prospertown Lake, only manually operated boats and canoes are allowed.

Horseback Riding

This is allowed only on designated WMAs with written permission. Apply online at www.WildlifeLicense.com/NJ/. Horseback riding permits should be displayed on outer clothing while riding. For more information on horseback riding permits, call (609) 259-2132.

Fishing Tournament

Any club or organization that would like to use a New Jersey wildlife management area for fishing tournaments must apply for and secure a permit from Fish and Wildlife. No fee is required. Applications will be accepted in January at Fish and Wildlife's Southern Region office, 220 Anchor Rd., Sicklerville, NJ 08081 at (856) 629-4950.

Boat Ramp Maintenance Permit

Any vehicle used to transport or launch a vessel or water conveyance on the following WMAs must have affixed to the lower corner of the driver's side rear window a boat ramp maintenance permit, receipt from a valid hunting, fishing or trapping license, or a photocopy of a valid hunting, fishing or trapping license. Be sure your Conservation ID number is clearly displayed; all other personal information may be blacked out for reasons of privacy. The boat ramp maintenance permit fee is \$15, available from a license agent or at Fish and Wildlife's Internet sales site, www.WildlifeLicense.com/NJ/.

Persons 70 years and older are not required to obtain a boat ramp maintenance permit and need no license, but must affix to their window proof of age, such as a former license displaying your date of birth.

1. Round Valley Angler Access
2. Kingwood
3. Assumpink
4. Dennis Creek
5. Tuckahoe
6. Mad Horse Creek
7. Union Lake
8. Menantico Ponds
9. Prospertown Lake

Create Your Own WMA Map

New Jersey Department of Environmental Protection (DEP) has a Web-based tool called i-MapNJ. Those with Internet access can create maps for any Wildlife Management Area. i-MapNJ provides a wealth of other environmental information, too!

This interactive program is updated on a regular basis so most of the latest information is available.

To access i-MapNJ, go to the DEP's Web site at www.state.nj.us/dep. Click the i-MapNJ button in the left column.

Those without Internet access can request a specific Wildlife Management Area by calling (609) 984-0547.

Angler Ethics

1. Keep Only the Fish Needed
2. Do Not Pollute—Properly Dispose of Trash
3. Sharpen Angling and Boating Skills
4. Observe Angling and Boating Safety Regulations
5. Respect Other Anglers' Rights
6. Respect Property Owners' Rights
7. Pass on Knowledge and Angling Skills
8. Support Local Conservation Efforts
9. Never Stock Fish or Plants into Public Waters
10. Promote the Sport of Angling

Go Fish! Fish Preserve



Go Fish! Preserve is a fully stocked 9-1/2 acre private fishing preserve. We stock Trout • Bass • Catfish • Pickerel

Boat & Rod Rentals Available
NO FISHING LICENSE REQUIRED EVER!

FREE
1 Hour Boat Rental
Exp. 11-30-08

Credit Cards Accepted

Open 5 Days A Week
Closed Mon. & Tues.

STOCKED
BI-MONTHLY

31 Newton-Sparta Rd. • Newton, NJ
Call (973) 579-6633 • www.gofishnj.com
ONE HOUR FROM NYC!

Fish Identification

NEW JERSEY FRESHWATER FISHES



Brook Trout



Rainbow Trout



Brown Trout



Lake Trout



Landlocked Atlantic Salmon



Northern Pike



Muskellunge



Chain Pickerel



Redfin Pickerel



Walleye



Yellow Perch



Hybrid Striped Bass



Striped Bass



White Perch



Largemouth Bass



Smallmouth Bass



Redbreast Sunfish



Pumpkinseed Sunfish



Bluegill Sunfish



Black Crappie



White Crappie



Channel Catfish



White Catfish



Brown Bullhead



White Sucker



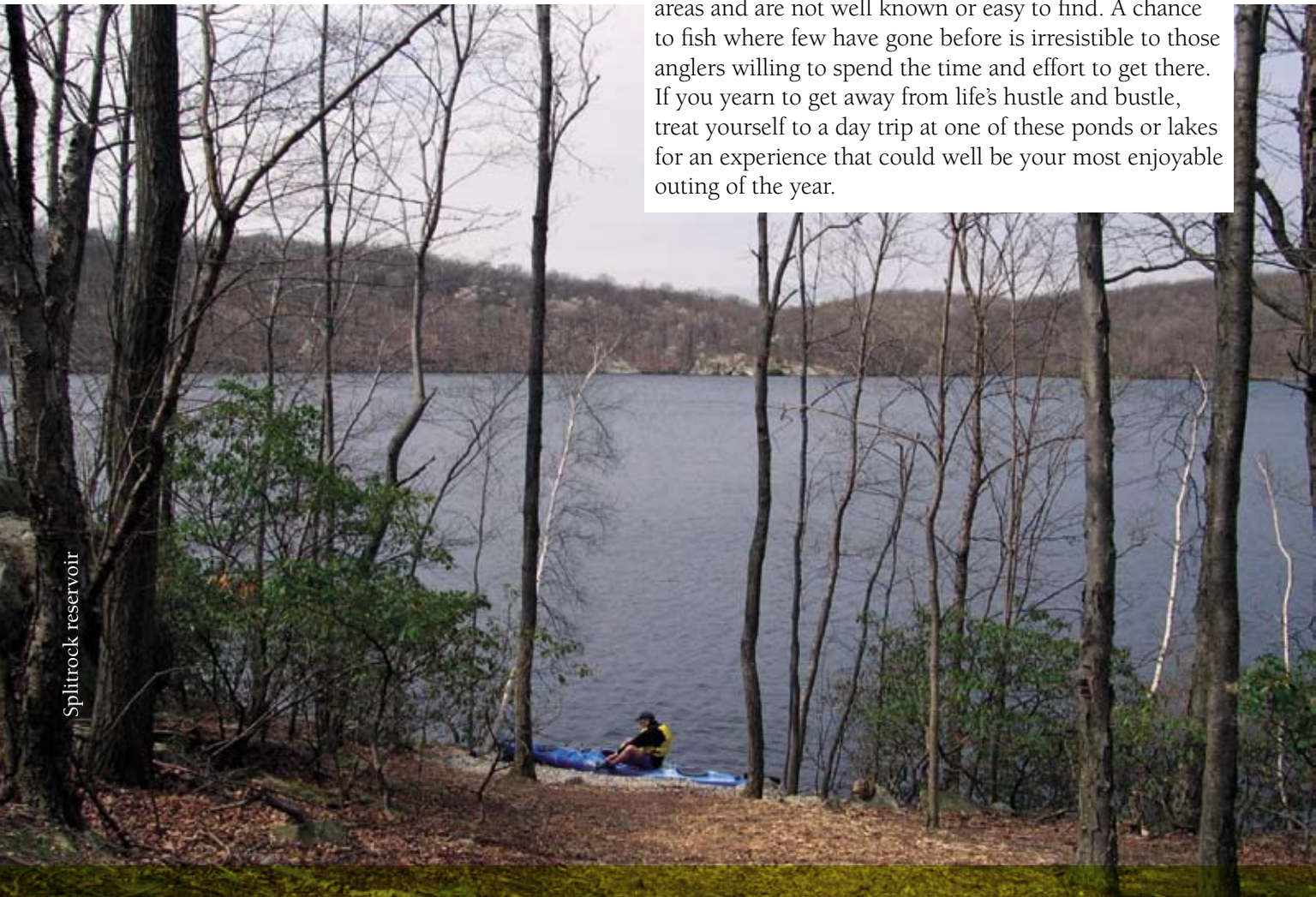
American Shad



Carp

Off the Beaten Path

Though New Jersey is the most densely populated state in the nation, little known treasures tucked away on public lands await anglers willing to venture off the beaten path. Through the state's Green Acres Program, tracts of land are acquired from willing sellers; some parcels have ponds and lakes formerly off limits to the general public. Some of these gems are found in remote areas and are not well known or easy to find. A chance to fish where few have gone before is irresistible to those anglers willing to spend the time and effort to get there. If you yearn to get away from life's hustle and bustle, treat yourself to a day trip at one of these ponds or lakes for an experience that could well be your most enjoyable outing of the year.



Splitrock reservoir

Quick Pond



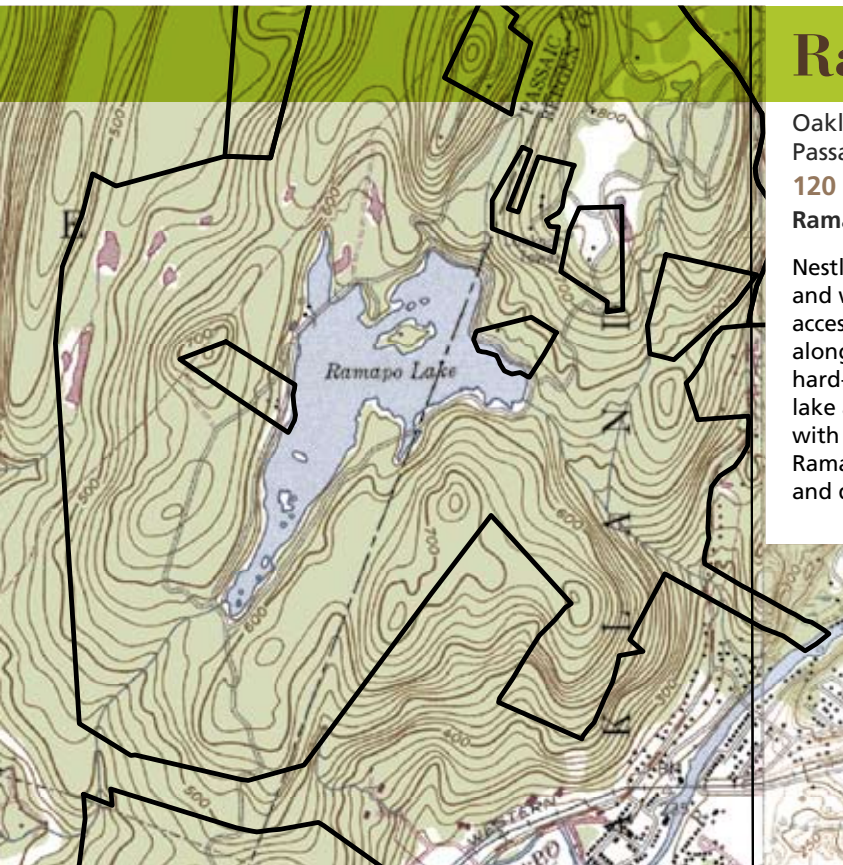
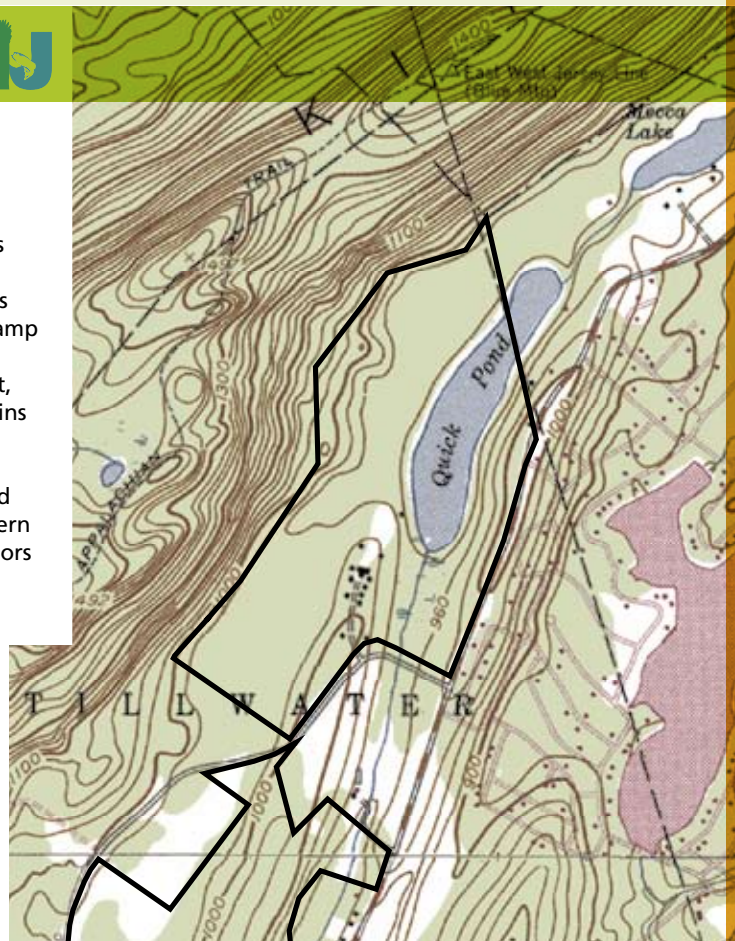
Stillwater and Hampton Townships, Sussex Co.

36 acres

Trout Brook Wildlife Management Area

Barely visible from the main road, this 36-acre natural pond lies within the Trout Brook Wildlife Management Area, not too far from Stokes State Forest. Stone pillars mark the entrance to this former summer camp, and a dirt road winds through the old camp down to the pond's lily pad-fringed edge. The adjacent swamp gives rise to the forested Kittatinny Mountain ridge to the west, and the water's brownish tea color is the result of natural tannins produced in the surrounding wetlands. In this picturesque and tranquil setting, largemouth bass, chain pickerel, yellow perch and sunfish abound. Shoreline fishing is possible though limited due to the mucky swamps and private homes that dot the eastern shore. Car top boat launching is available and only electric motors may be used (a modest boat ramp is in the planning stage). Boaters should proceed cautiously when navigating away from the boat launch to avoid hitting the submerged remnants of old docks. Although a minor obstacle to boating, these underwater structures are favored by fish and savvy anglers know to target this area as well as the open water pockets in and along the lily pads.

DIRECTIONS: From the center of Newton, take Rt. 206 north. After approx. 3 miles, make left onto Rt. 626, which will then merge with Rt. 521. Stay on Rt. 521 north, then turn left onto Rt. 617 (Lake Owassa Road). Entrance to pond is on the right (between stone pillars); follow road down to pond.



Ramapo Lake



Oakland Borough, Bergen Co./Wanaque Borough, Passaic Co.

120 acres

Ramapo Mountain State Forest

Nestled in the heart of the Ramapo Mountain State Forest and within the designated *natural area*, lies Ramapo Lake, accessible only by foot from one of two parking areas along scenic Skyline Drive. After ½- to 1-mile walk on a hard-topped road through a thickly wooded forest, the lake appears. Relatively deep (22 foot maximum depth) with dense aquatic vegetation in the shallow upper end, Ramapo Lake supports good largemouth bass, chain pickerel and quality panfish populations. Panfish are dominated by bluegill, yellow perch and black crappie. A dirt road around the lake's perimeter provides numerous shoreline fishing opportunities.

Motors are limited to electric only. Car-top boats such as aluminum jon boats, canoes, kayaks, and inflatable boats are permitted on the lake. These can be transported over the smooth road surface, particularly if you bring a small boat dolly. The road is not level.

DIRECTIONS: From Interstate 287, Exit 57, take Skyline Drive approximately 2 miles. Parking lots are located on the left.

Ryker Lake



Sparta Township, Sussex Co.

30 acres

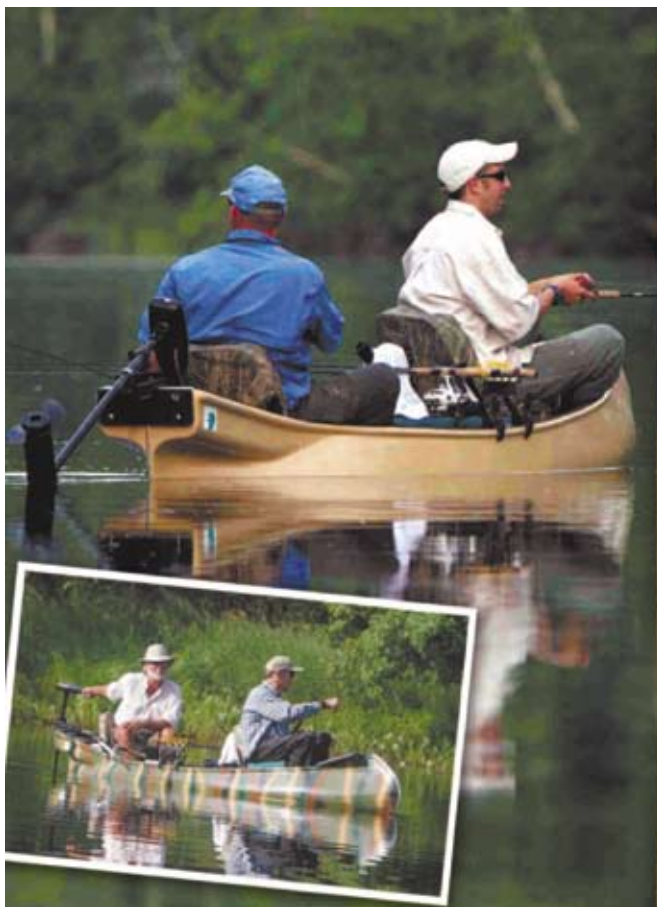
Sparta Mountain Wildlife Management Area

Ryker Lake is a relatively shallow (8-foot maximum depth) impoundment located within the Sparta Mountain Wildlife Management Area. This scenic lake is a ¼-mile drive down a dirt road from Edison Road. Boats (electric motors only) can be trailered or car-topped to the lake, however, there is no ramp. Therefore, after launching a boat your vehicle must be parked about 100 yards up the road. Most of the lake contains aquatic vegetation with a majority of the shallow areas being extremely dense making for challenging fishing. Shoreline fishing opportunities are limited by this dense vegetation and the predominantly wooded shoreline. The lake supports good largemouth bass and chain pickerel

populations and good numbers of large sunfish and yellow perch. The lake is currently managed under special "Conservation Regulations" to protect and maintain the quality panfish and largemouth bass fishery.

See regulations page 22.

DIRECTIONS: From Sussex County, take Route 15 to Glen Road or from Passaic County, take Berkshire Valley Road to Ridge Road. Take Glen or Ridge Rd to Edison Road, and proceed 100 yards to WMA entrance.



The ultimate custom craft for your small water adventures

All River Ridge Custom Canoes are made to order and available with

- Hand-rolled and hand-laid fiberglass hull
- Three adjustable drink holders
- Two detachable double-tier tackle boxes
- Rod holders
- Battery box & hook-up
- MUCH MORE!



River Ridge Custom Canoes

(507) 288-2750
5865 River Ridge Ct. N.E.
Rochester, MN 55906
www.riverridgecustomcanoes.com

Maple Lake

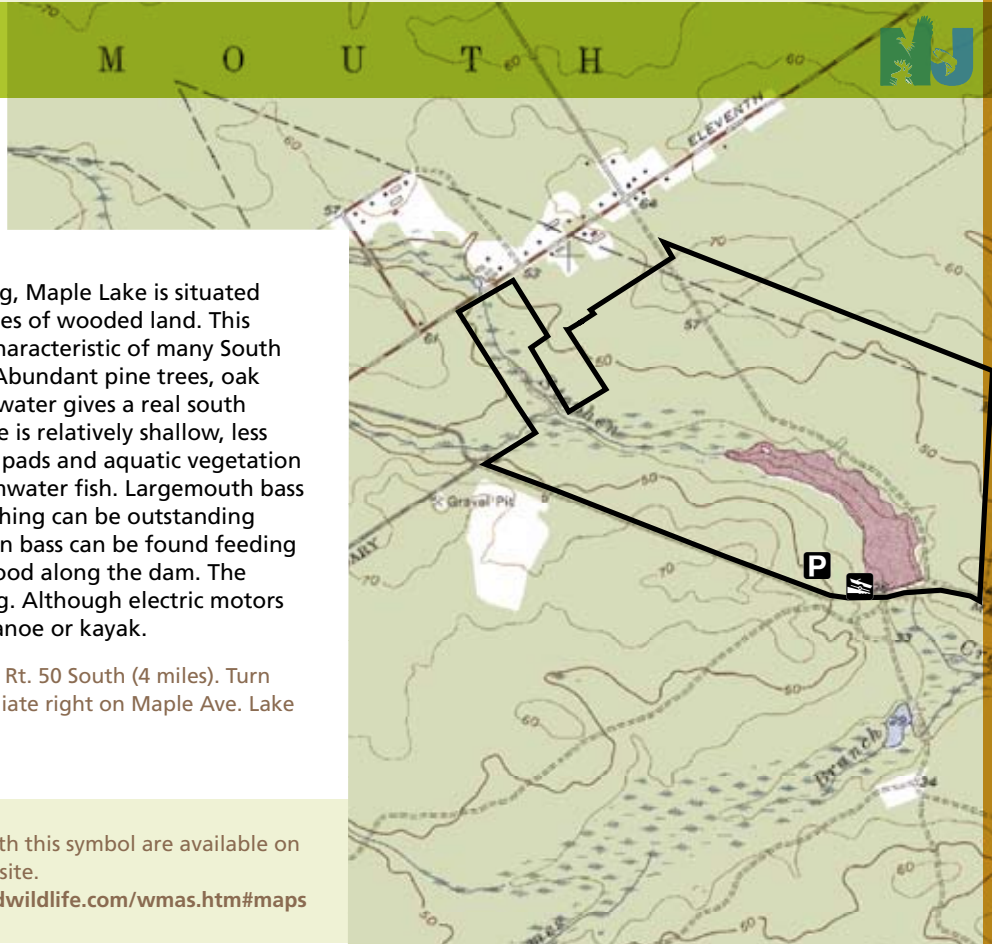
Estell Manor, Atlantic Co.

35 acres

Maple Lake Wildlife Management Area

Although located off Rt. 50, and just four miles south of Mays Landing, Maple Lake is situated in the middle of several hundred acres of wooded land. This Wildlife Management Area lake is characteristic of many South Jersey lakes located near the coast. Abundant pine trees, oak trees, sandy soil and tannin-stained water gives a real south Jersey Pinelands experience. The lake is relatively shallow, less than 10 feet with ample stumps, lily pads and aquatic vegetation providing excellent habitat for warmwater fish. Largemouth bass and chain pickerel are abundant. Fishing can be outstanding during the hot summer months when bass can be found feeding on dragonflies. Shoreline access is good along the dam. The gravel boat ramp has limited parking. Although electric motors are allowed, the lake is ideal for a canoe or kayak.

DIRECTIONS: From Mays Landing, take Rt. 50 South (4 miles). Turn right on Walkers Forge Rd. and immediate right on Maple Ave. Lake is 2 miles on the right.



New Jersey WMA maps with this symbol are available on the Fish and Wildlife Web site.

Visit <http://www.njfishandwildlife.com/wmas.htm#maps>

Jersey Paddler

Your headquarters for kayak fishing!

- Largest selection of kayaks from Wilderness, Ocean Kayak, Hobie, Heritage & Native Watercraft
- Test paddling, instruction & tours
- Guided kayak fishing excursions



Full selection of Thule and Yakima racks, accessories and boxes

YAKIMA
destination hardware

THULE



Jersey Paddler

Jersey Paddler
1756 Rt. 88 W at Rt. 70
Brick, NJ 08724

1-888-22-KAYAK • jerseypaddler.com

Maskell's Mill Pond



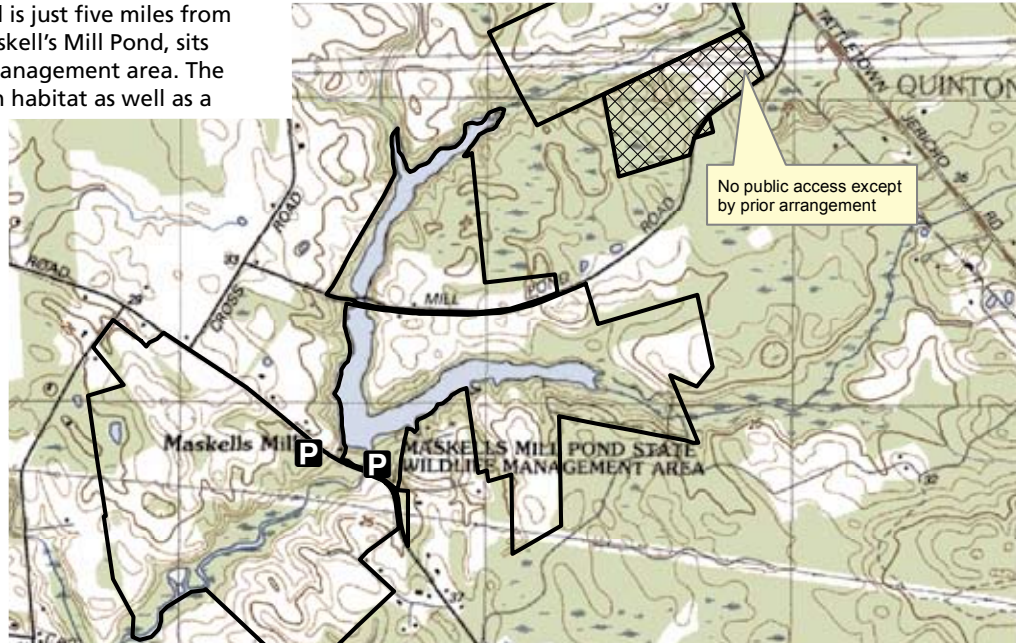
Lower Alloways Creek Township, Salem Co.

33 acres

Maskell's Mill Pond Wildlife Management Area

This picturesque 33-acre impoundment is located in one of the most rural areas of South Jersey, and is just five miles from the Delaware Bay. Acquired in 1958, Maskell's Mill Pond, sits in the northern section of the wildlife management area. The wooded shoreline provides excellent fish habitat as well as a tranquil setting. The lake is relatively shallow and has abundant vegetation. The largemouth bass, black crappie, chain pickerel and sunfish populations are excellent. Parking is rather limited and boats can be launched at the dirt boat ramp located on Mill Pond Rd. Only electric motors are permitted and the lake is ideal for fishing from a canoe or kayak. Shoreline fishing is limited to areas near the dam and boat ramp. Anglers should be aware that several private residences and a private camp share a portion of the lake's perimeter; the rest is publicly accessible state property.

DIRECTIONS: From Millville, take Rt. 49 West toward Bridgeton. Turn left at Harmersville-Pecks Corner Rd. Turn left on Cross Rd. Turn left at Mill Pond Rd.



No public access except by prior arrangement



Arranging hassle free hunting and fishing trips with over 250 approved lodges.



corporate incentive trips

Phone: **315-598-2229**

Cell: **315-430-2731**

Email:

billb.outdoorconnections@yahoo.com

www.upstataearcheryadventures.com

Ray's Sport Shop

559 Route 22, North Plainfield, NJ
908-561-4400 • Fax 908-561-4956

Serving The Sporting Public Since 1947

STATE & FEDERAL
DUCK STAMPS
& DEER
PERMITS

FIREARMS
BOUGHT &
CONSIGNED.
GUNSMITH ON
PREMISES.

N.J. & PA.
FISHING &
HUNTING
LICENSES

Everything for the Outdoors Sportsman

FISHING • HUNTING • ARCHERY

STORE HOURS: MON-FRI 9-10, SAT & SUN 9-6

Indoor Firearms Range • Handgun Training Course

Law Enforcement Equipment & Uniforms

Pick up on a better way to fish.



Angler alert! We asked professional kayak anglers all over the world to help us design the ultimate fishing kayak. Introducing the new Prowler Trident 15 - featuring the couch-like Comfort Plus seat back, Rod Pod, Sonar Shield and more! Less hassle, more freedom and more time to fish - the Prowler Trident 15 is the kayak anglers' choice.

PROWLER TRIDENT The ultimate fishing kayak.



JOHNSON
OUTDOORS

OCEAN  KAYAK

www.oceankayak.com

PADDLE TO THE PEOPLE PADDLE TO THE PEOPLE PADDLE TO THE PEOPLE PADDLE TO THE PEOPLE PADDLE TO THE PEOPLE

Advertise in the *New Jersey Hunting Digest* and **Hit Your Target Market.**

For more information call
J.F. Griffin Publishing at
(413) 884-1001

J.F. GRIFFIN
PUBLISHING, INC.



The Tri-State Areas Fastest
Growing Soft Bait Manufacturer

The Krawler Series

are the most versatile soft baits on the market! These baits will catch fish in any situation, from early to late season, from cold to warm waters, it doesn't matter! Our soft baits give the angler the perfect bait for any condition.

Ask your retailer for the Krawler Series!

Angler's Select scientifically formulated Sure Strike™ Attractant is infused into the soft plastic at the time of the bait's formation. Scent Infusion Technology™ (SIT™) releases Sure Strike™, a proven attractant, for the entire life of the bait.

WWW.ANGLERSSELECT.COM



Smoked Lake Trout Recipe

By Bob Papson, Principal Fisheries Biologist

Smoking fish is a delicious alternative to traditional cooking methods. Oily fish like salmon and trout are well-suited to smoke cooking. Lake trout are excellent smoked and probably the tastiest preparation method. Preparing and smoking fish is a little time consuming, however, you can smoke a large amount at one time and the finished product is well worth the effort. Smoked fish make an excellent appetizer for special celebrations or as a snack while watching Monday night football.

Preparation

Smaller 15- to 20-inch lake trout are the perfect size for smoking. Clean the fish by cutting the belly open, removing the guts, tail and head then rinse well with water. Smoked fish can be prepared fresh or freeze your catch until you have a good amount to smoke.

Two key factors in successful smoke cooking fish are correct use of the smoke oven (smoker) and the brining process.

Basic Fish Brine

- 1 gallon water
- 2 c salt
- ¼ lb. dark brown sugar
- 3 oz. lemon juice
- ½ Tbs. liquid garlic
- ½ Tbs. liquid onion

(crushed fresh onion and garlic may be substituted for liquid)

First dissolve the salt in water. Add the remaining ingredients and mix thoroughly.

Optional Seasonings

Dill may be added to the brine. For a subtle flavor variation, substitute honey or blackstrap molasses for the brown sugar, especially with salmon.

Smoking Procedure

Place whole, cleaned fish (or fillets for larger fish), skin on, in a large plastic, glass or earthenware container, then add brine. Leave fish in brine for a minimum of three hours. To control the degree of salt absorption, vary the immersion time. Brining overnight (8 - 12 hours) works well.

Remove fish from brine and rinse lightly in fresh water. Place fish on wire racks to dry completely before smoking. Outdoors in a cool, breezy, shady location works well. Drying can also be done indoors with a fan. It is important that fish are thoroughly dry (about one to three hours) until a thin, glossy layer – called the pellicle – forms on the surface.

The pellicle takes on an attractive color in the smoke oven. It is believed to aid in preservation of the smoked fish.

Hot Smoking

Hot smoking requires temperatures between 85° and 250° F, in effect a cooking process. I prefer smoking fish at approximately 180° F. Arrange lake trout on wire racks and place in the smoke oven.

Various wood species impart a different smoke flavor to the fish. Alder or a combination of alder and hickory are often recommended for fish. Commercially-packaged wood chips are readily available at sporting goods stores.

Whole lake trout (15 to 20 inch size) can be smoked for around four hours, adding wood as needed to maintain the smoke. Check fish periodically for the amount of moisture remaining. Adjust the finishing time to suit how moist or dry you like your fish. Remove fish from smoker and let cool completely.

Storage

For storing smoked fish, remember that drier fish keep longer. Wrap each fish separately in waxed paper or aluminum foil and refrigerate. Smoked fish will keep for two weeks. Freeze a portion of the batch immediately after smoking for up to two to three months.

In smoke cookery as in other arts, there are few rigid rules; follow the basic guidelines and experiment with seasonings and various wood types for variety.



Smoked fish are a real gourmet delight that are certainly worth the effort. Be sure to share your culinary creation with family and friends; no doubt they will agree.

Monomaster

It takes 600 years for monofilament to break down!



Store waste line and keep it neatly wrapped, instead of tangled in your pockets! The NEW **MONOMASTER** easily stores an inch of waste mono generated from changing a fly, up to 50 feet of snarled line.

- Innovative new product-clips onto vest
- Lightweight and easy to use-just spin and go
- Holds small pieces or many feet of line
- Can be cleaned and reused
- Conservation-minded anglers can protect our environment

Anything that reduces pollution is essential in our time, but a device that does it with such ease is a downright miracle. **MONOMASTER** is a must-have for serious anglers!

— Richard Friedenberg - Screenwriter, "A River Runs Through It"

A common sense answer to a long-time problem!!



www.grasshopperproducts.com

MOLDER'S FISHING PRESERVE

THE FINEST FISHING IN MIDDLESEX COUNTY


Open Every Day at 6:00 am

- No Fishing License Required
- Bait & Tackle Sales
- Rental Rods Available
- Birthday Parties
- Camps & Clubs Welcome
- Daily Admission Rates:

Adults: \$11.00

Children Under 12: \$9.00

Our Lakes are Stocked with Trophy:

- | | |
|--|---|
|  Bass |  Bluegills |
|  Walleye |  Crappies |
|  Striped Hybrid Bass |  Trout |
|  Blue & Channel Catfish |  Perch |

Catch & Release or Take Your Catch Home

All Fish Kept Must be Paid For • All Trout Must be Kept

**CONVENIENTLY LOCATED ON JOHN-WALL RD
(Off Englishtown Rd) IN OLD BRIDGE**

We Also Wholesale Bait!

For more information call **732-446-2850**



18 ROUTE 46

HACKETTSTOWN



WWW.OUTCASTSPORTSHOP.COM

New Jersey's Oldest Hatchery - Est. 1865

Certified Whirling Disease FREE!

All Species of Game and Pan Fish in New Jersey



"We Specialize in Sportsmen's Club Stocking"

Fresh Brown Trout Eggs For Steel Head Fishing

Stocking

- Trout
- Largemouth Bass
- Bluegills
- Channel Catfish
- Water Plants
- Crappies
- Yellow Perch
- Fat Head Minnows
- White Amur
(Grass Eating Carp)
- Koi & Koi Feed

Where
Quality
Counts!

Musky Trout Hatchery, Inc.

Fish Delivered or Picked-up at our Scenic Hatchery in Warren County

Our Hours are: M-F 7:00 AM-3:00 PM • Sat 8:00 AM-2:00 PM

279 Bloomsbury Road, Asbury, NJ 08802

(908) 479-4893 • www.muskytrouthatchery.com

After 5:00 PM call Jeff or Vern Mancini (908) 638-8747 or Email: muskytrouthatchery@embarqmail.com